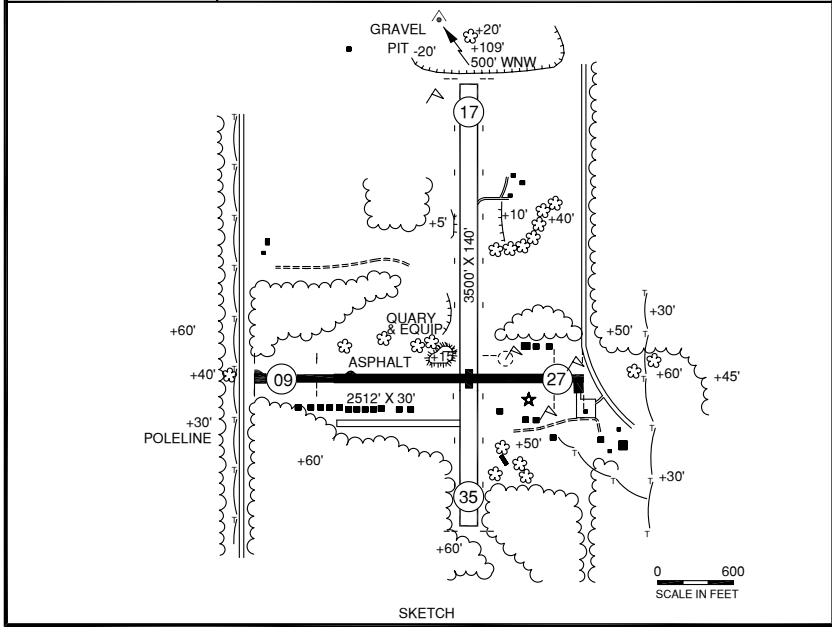
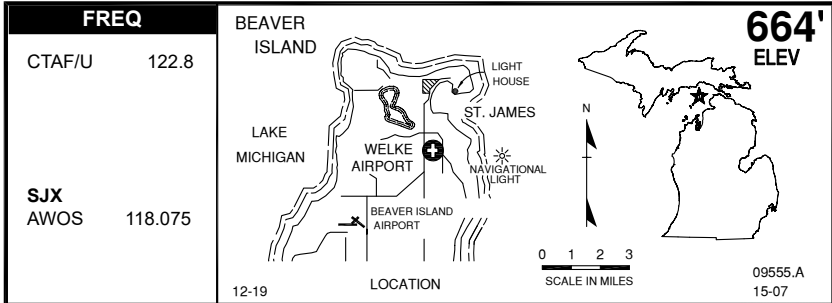


BEAVER ISLAND, WELKE (6Y8)

B



RWY LENGTH BEYOND DISPLACED THR
 09/ 2062' * 17/ —
 27/ 2272' * 35/ 2150'

COORDINATES
 45° 43.27'N
 085° 31.22'W

License
 Basic Utility

FM CITY: 2.0 mi S
LGT: RTG BCN SS-SR; NSTD LIRL— not for public use, except w/prior permission avbl. call 231-448-2071 or 231-488-2374.

NAV AIDS: 111.8 (PLN) 284° 36.0 NM to fld, NDB (SJX) 382 KHz (AT SJX).

MGR: Paul Welke
PH: 231-448-2071 (Terminal bldg)
 231-448-2374 (Mgr res)
FBO: Welke Avn / Island Airways
 231-448-2030 (Hgr)
ATND: 24 hrs (Mgr/Owners resides at arpt)

FUEL: None
RPR: Major A&P
WX: None
SNW RMVL: Yes
TRNSP: Taxi, car rntl
MEALS: In town, 1.5 mi
RON: In town, 1.5 mi

- RWY 9/27 quarry, dirt piles, equipment 165' N of rwy, 150' W of rwy 17/35.
- RWY 27 acft parking in primary sfc, S side.
- RWY 17 20' drop off N end of rwy.
- RWY 17/35 rough & uneven with bare spots & gravel.
- Rwy 9/27 NSTD LIRL located 72' fm pvmt edge each side.
- Deer on & invof arpt.