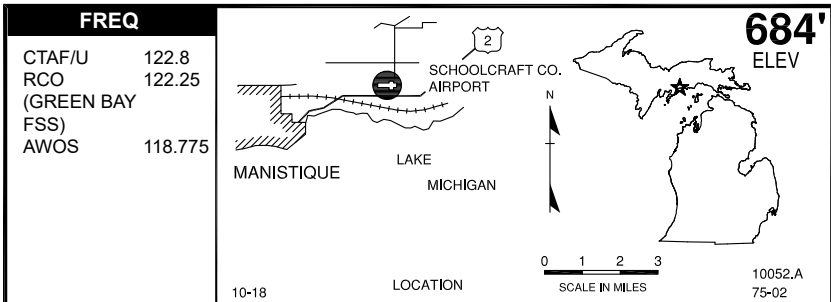
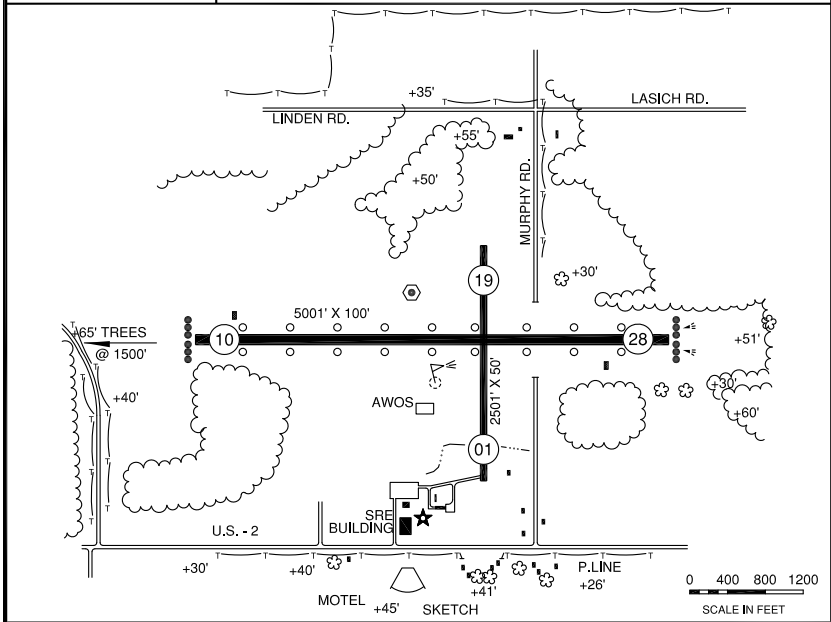


# MANISTIQUE, SCHOOLCRAFT CO (ISQ)



**684'**  
ELEV

**M**



**RWY LENGTH BEYOND DISPLACED THR**

10/ — \* 01/ —  
28/ — \* 19/ —

**COORDINATES**

45° 58.48'N  
086° 10.31'W

**License**  
General Utility

**FM CITY:** 3.0 mi NE  
**LG:** ROTG BCN. MIRL 10/28, PAPI,  
 rwy 28 REIL'S-STD PCL CTAF  
**MGR:** Steve Videtich  
**PH:** 906-341-5522 (Arprt)  
 906-341-3662 (Mgr)  
**FBO:** County operated  
**ATND:** Jun-Oct Mon-Fri 0900-1700  
 Sat-Sun Unatnd  
 Nov-May Mon-Fri 0900-1500  
 Sat-Sun Unatnd

**RDO NAV AIDS:** IAP, 110.4 (ISQ) at fld  
**FUEL:** 100LL, JET A  
**RPR:** None  
**WX:** AWOS 906-341-8585,  
 WX briefing system  
**SNW RMVL:** Yes-vfy cond  
**TRNSP:** Public Transit 906-341-2111  
**MEALS:** 0.5 mi  
**RON:** Adj

- Birds & deer invof arpt.
- Admin bldg access-depress V, then simultaneous III II, then I.
- Camping permitted.
- Wi-Fi.
- Fuel self serv.
- Unmarked P-line 1 mi N of rwy 19 end.