

# Update of Racial Disparities in Michigan & COVID-19

May 21, 2020

Disparities Data Committee

# Purpose

- *Provide relevant data to aid the Lt. Governor-appointed Racial Disparities Task Force in better understanding and addressing the needs of racial and ethnic minority communities.*
  - *Outline existing upstream factors that result in disparities and put some people at greater risk of severe impact of COVID-19 epidemic and response*
  - *Identify a set of actionable downstream indicators that can be used to measure change in disparity in short term*

# Disparity Indicators

Indicator: Rationale	Sample of Proposed Metrics
<p>SARS-CoV-2 Testing: Are we testing enough in all communities?</p>	<p>Testing by Race and Ethnicity Testing Rate in Socially Vulnerable Communities Turn Around Time for Positive and Negative Tests</p>
<p>SARS-CoV-2 Spread: What is the spread of COVID-19 in Michigan populations?</p>	<p>Number &amp; Percent of COVID-19 Cases by Race and Ethnicity Case Rate per Million People by Race and Ethnicity Missingness of Race/Ethnicity data for COVID-19 cases</p>
<p>COVID-19 Severity: Are some groups experiencing more severe outcomes?</p>	<p>COVID-like Illness (CLI) and COVID-19 diagnosis in EDs Number &amp; Percent of COVID-19 deaths by Race and Ethnicity Death Rate per Million People by Race and Ethnicity</p>
<p>Access to Services for COVID-19: Is case investigation and contact tracing equitable? Are supportive services available for quarantine/isolation compliance? Is vaccine distributed equitably?</p>	<p>Percent of cases who were followed up with CI/CT Percent of cases who indicated need for services and services provided Total vaccines administered by race % population with first dose, completed vaccine series</p>
<p>Impact of Pandemic Response (<i>rotating metrics</i>): How are non-COVID outcomes impacted by COVID-19? And is the impact the same in all populations? Are preventive services and access to care equitable?</p>	<p>Excess deaths Maternal and Child Health Indicators (pre/antenatal, CLPPP) Substance use disorder services Health Screening (HIV, STD, Noncommunicable Diseases)</p>

# Key Messages

## SARS-CoV-2 Testing

- Among neighborhood testing sites, the number of tests conducted has decline for all races and ethnicities in the past two weeks; highest decline among Blacks
- Among NxGen testing data, Whites (60%) and Non-Hispanic (36%) continue to make up the majority of tests
- In past 2 weeks at neighborhood testing sites, the highest positivity was among American Indian or Alaskan Native
- Individuals should be encouraged to seek testing when needed

## SARS-CoV-2 Spread

- Cases per million are decreasing for all races and ethnicities but remains highest for Blacks and Hispanics
- In the past 30 days, 23% of all cases have unknown race (↓4%), and 27% have an unknown ethnicity reported (↓4%)
- Spread of SARS-CoV-2 varies by county, however, Blacks and Hispanics are disproportionately affected in Wayne, Berrien, Genesee, and Kent

## COVID-19 Severity

- The proportion of ED Visits with coronavirus symptoms or a COVID-19 diagnosis is decreasing for all races and is highest for Asian, Other Races, and Blacks
- In the past 28 days, Blacks and Other Race have been flagged as having more than their expected share of cases, hospitalizations, & deaths; as have American Indian/Alaskan Native, and Hawaiian/Pacific Islanders
- Recent trends show that Non-Hispanics, Blacks, and American Indians/Alaskan Natives have the most reported deaths per capita

## Access to COVID-19 Services

- A lower percent of Blacks/African Americans are quarantining at symptom onset and are aware of the source of infection
- Vaccine coverage for those 12 and older was highest among those of Asian, Native Hawaiian or Pacific Islander Race (44.1%), followed by Non-Hispanic (NH) White (39.1%), American Indian (39.0%), Hispanic (30%) ethnicity, and NH Black or African American (26.4%)
- Levels of vaccine coverage by census tract vary within the counties of Berrien, Kent, Genesee, and Wayne

## Impact of Pandemic Response

- No update this week

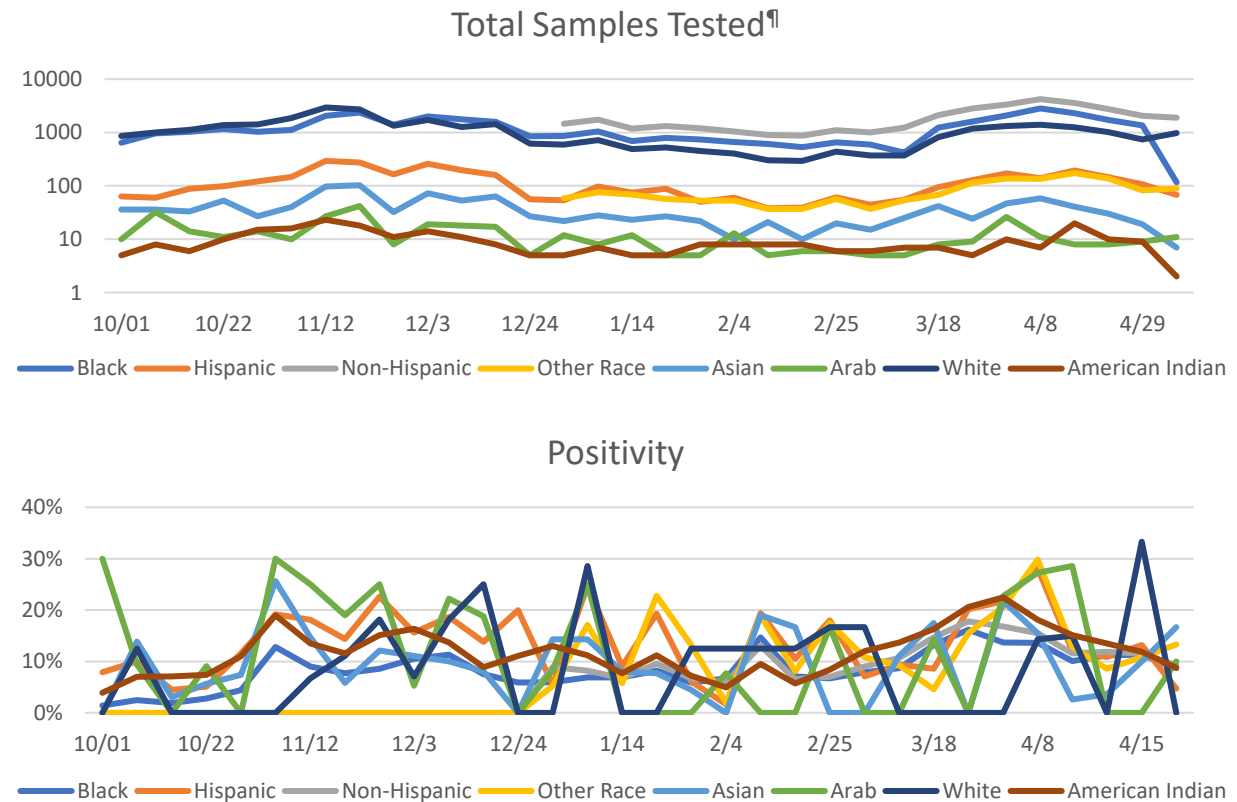
# Testing by Race and Ethnicity (Sentinel Sites)

## Cumulative Neighborhood Testing Demographics (22 sites)

Percent Tested		% Positive (4/29 – 5/12)	
<b>Race*</b>			
1%	Asian	11.8%	Asian Positivity
< 1%	American Indian or Alaskan Native	27.3%	American Indian or Alaskan Native Positivity
39%	Black/African American	11.1%	Black/African American Positivity
3%	Other Race	12.1%	Other Race Positivity
33%	White	10.4%	White Positivity
<b>Ethnicity*</b>			
4%	Hispanic/Latino	9.9%	Hispanic/Latino Positivity
71%	Non-Hispanic/Latino	10.4%	Non-Hispanic/Latino Positivity
< 1%	Arab	5.5%	Arab Positivity

\* May not add to 100% due to those who responded unknown or preferred not to answer

## Time Trends



<sup>¶</sup> Note: axis is on the logarithmic scale to better view trends over time for smaller populations

# NxGen Testing by Race and Ethnicity

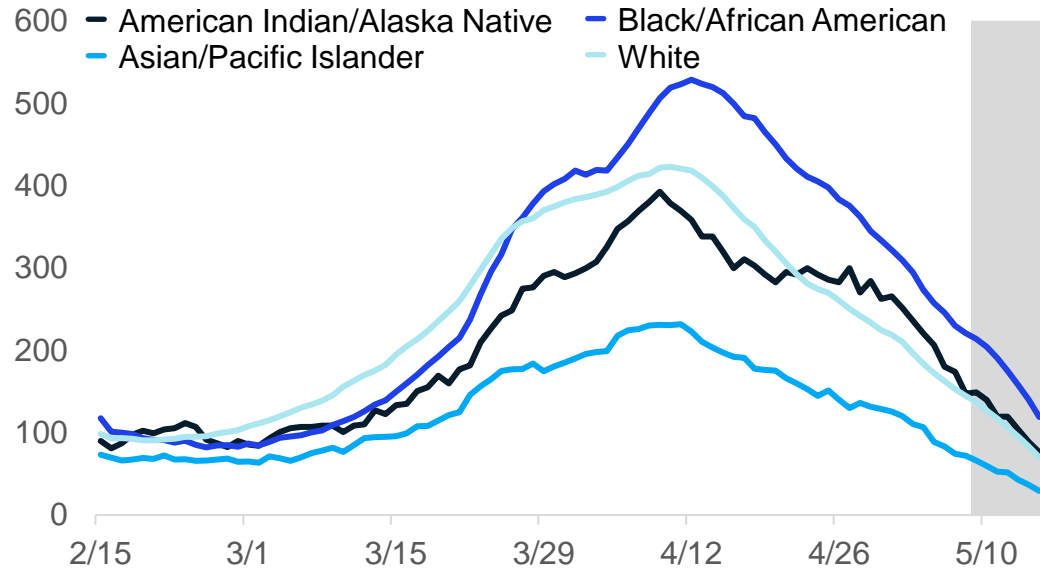
## 79 testing sites, 113,354 samples

Percent Tested		Percent Positive (cumulative)	
<b>Race*</b>			
1%	Asian	12%	Asian Positivity
< 1%	American Indian or Alaskan Native	13%	American Indian or Alaskan Native Positivity
6%	Black/ African American	8%	Black/African American Positivity
< 1%	Native Hawaiian/Pacific Islander	18%	Native Hawaiian/Pacific Islander Positivity
2%	Other Race	8%	Other Race Positivity
60%	White	10%	White Positivity
<b>Ethnicity*</b>			
3%	Hispanic/Latino	17%	Hispanic/Latino Positivity
36%	Non-Hispanic/Latino	6%	Non-Hispanic/Latino Positivity
< 1%	Jewish	3%	Jewish Positivity

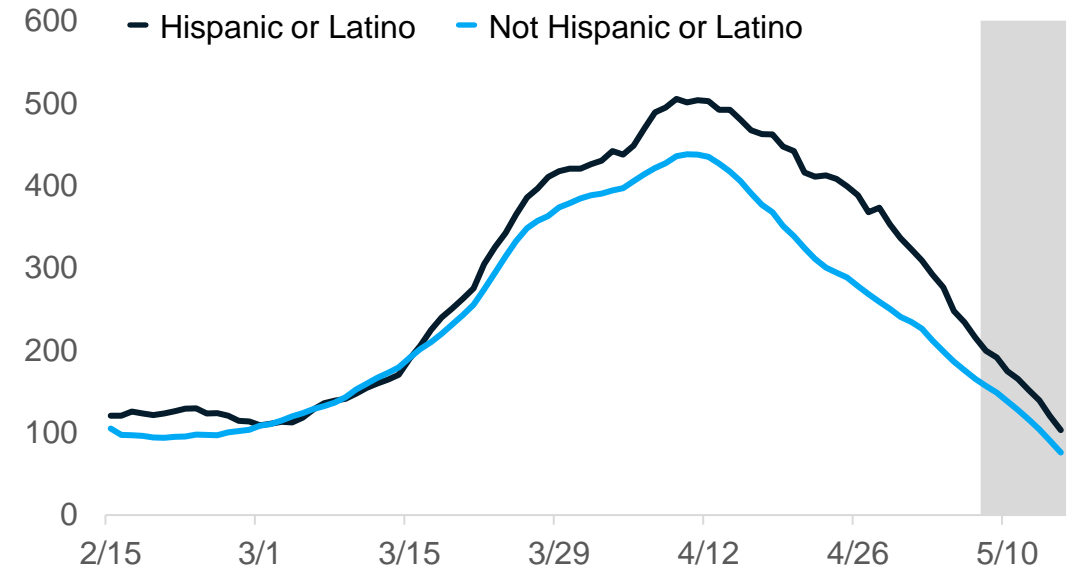
\* May not add to 100% due to those who responded unknown or did not to answer

# Average daily new cases per million people by race and ethnicity

**Daily new confirmed and probable cases per million (7 day rolling average) by race category**



**Daily new confirmed and probable cases per million (7 day rolling average) by ethnicity category**



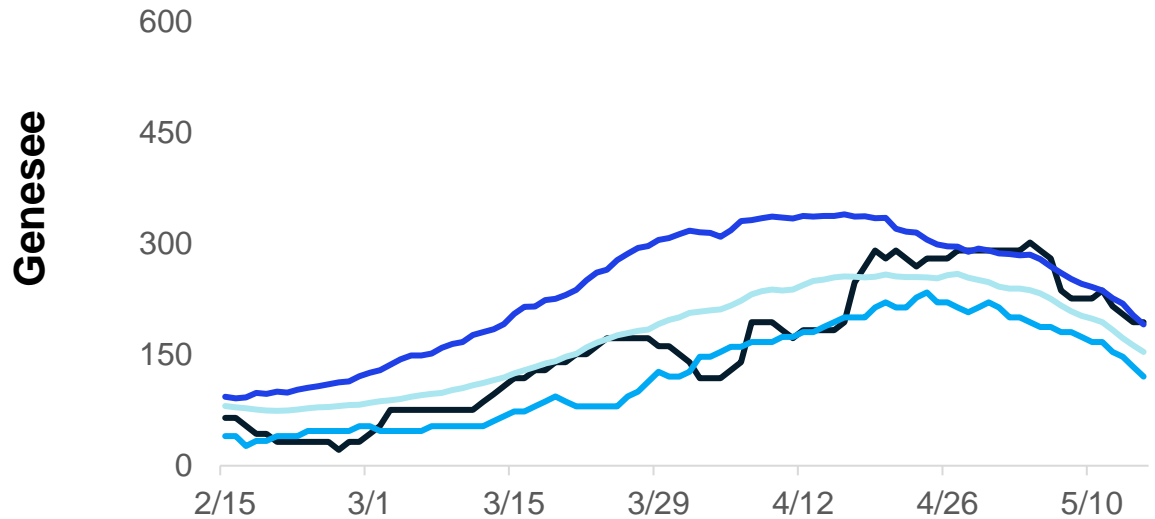
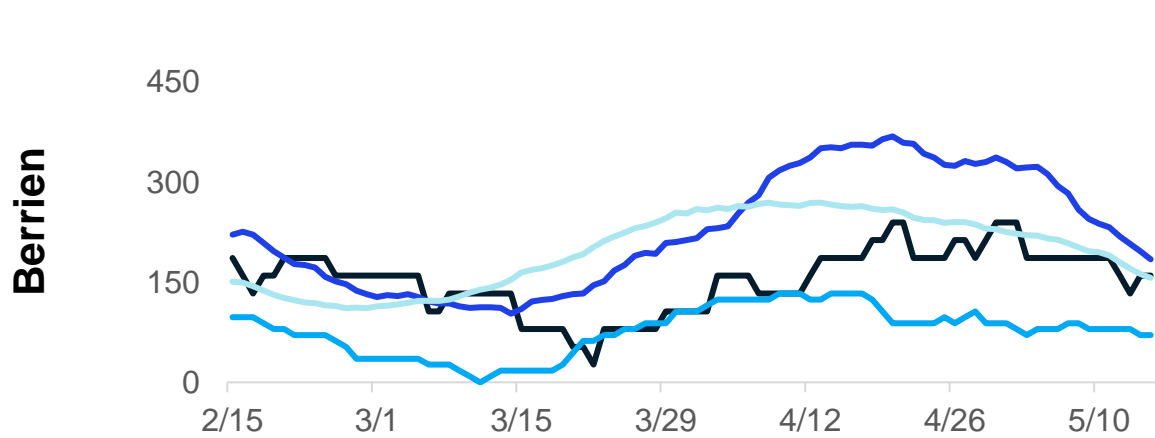
## Updates since last week:

- Cases per million are decreasing for all races and ethnicities
- **Blacks and Hispanic/Latinos continue to have the highest case rates**
- In the past 30 days, 29% of all cases represent unknown, multiple, or other races (23% of race is unknown, ↓4%)
- In the past 30 days, 27% of all cases have an unknown ethnicity reported (↓4%)

# Average daily new cases per million people by race and ethnicity

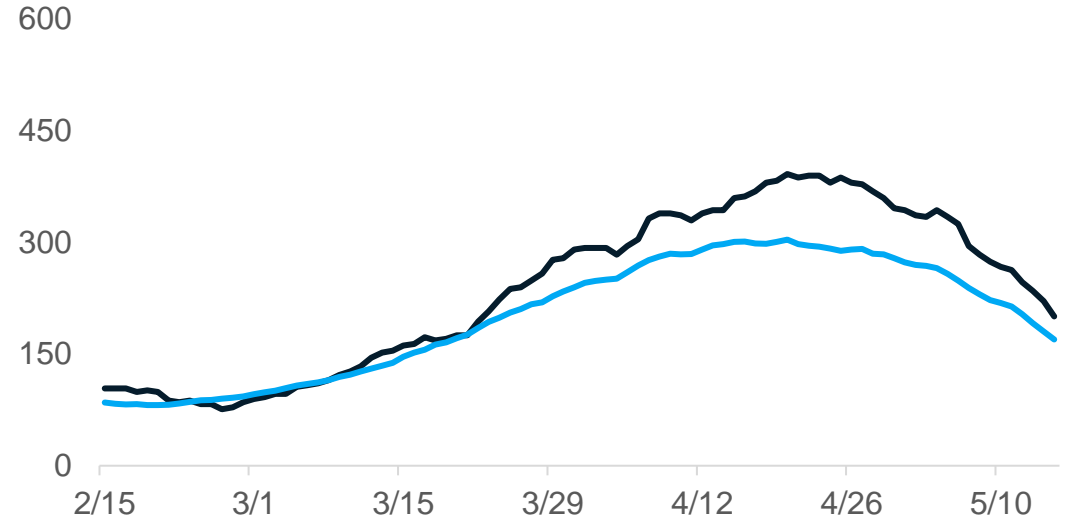
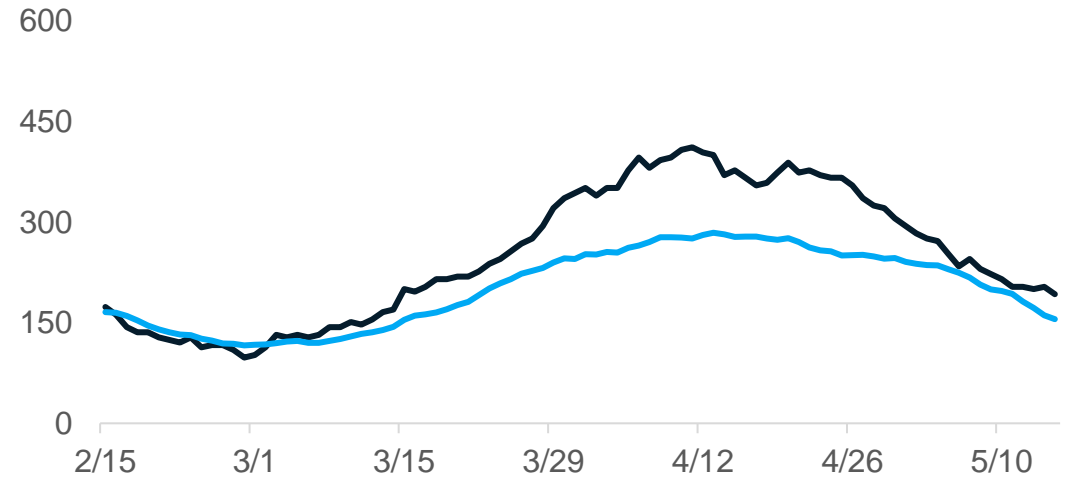
### Daily new confirmed and probable cases per million (30-day rolling average) by race category

- American Indian/Alaska Native
- Black/African American
- Asian/Pacific Islander
- White



### Daily new confirmed and probable cases per million (30-day rolling average) by ethnicity category

- Hispanic or Latino
- Not Hispanic or Latino



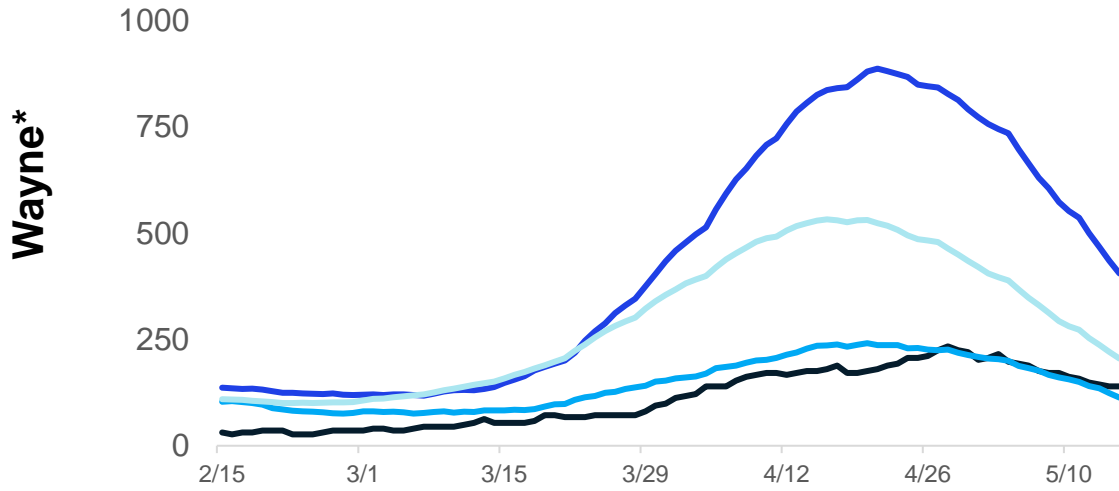
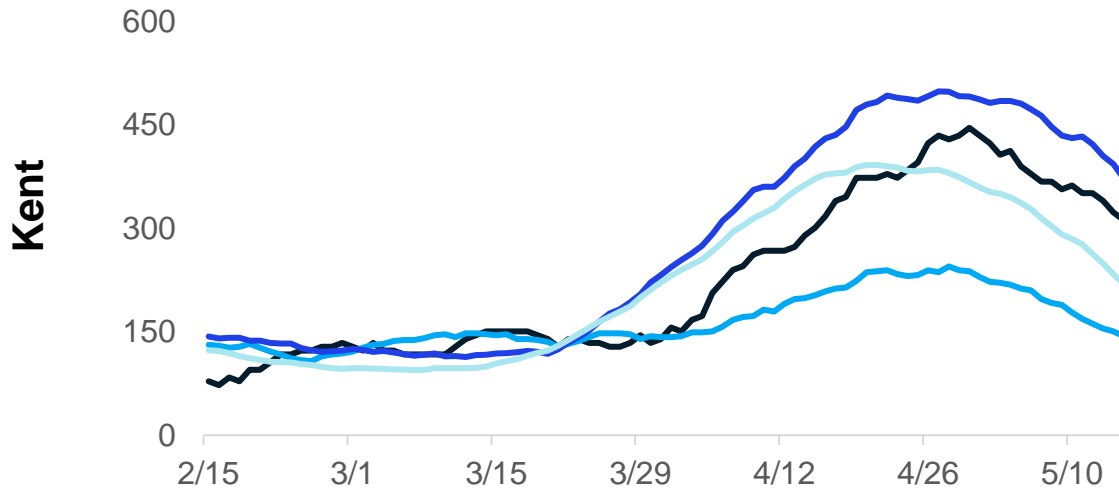
Note: Case information sourced from MDHHS and reflects date of death of confirmed and probable cases.  
 Source: MDHHS – Michigan Disease Surveillance System



# Average daily new cases per million people by race and ethnicity

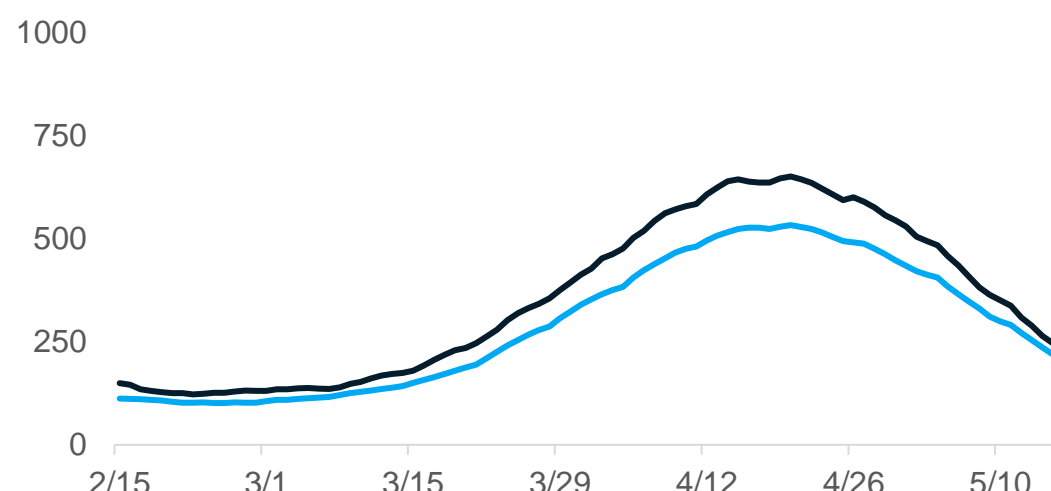
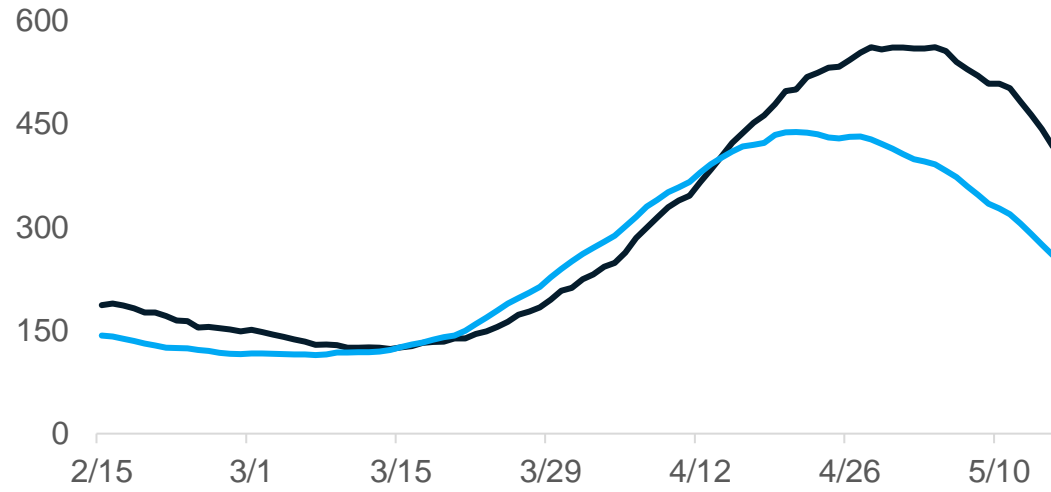
### Daily new confirmed and probable cases per million (30-day rolling average) by race category

- American Indian/Alaska Native
- Black/African American
- Asian/Pacific Islander
- White



### Daily new confirmed and probable cases per million (30-day rolling average) by ethnicity category

- Hispanic or Latino
- Not Hispanic or Latino



Note: Case information sourced from MDHHS and reflects date of death of confirmed and probable cases. \* Note y-axis for Wayne; much higher case burden than other three counties for Blacks/African Americans  
 Source: MDHHS – Michigan Disease Surveillance System

# Prior 28 Days Metrics By Race (Apr 20, 2021 – May 18, 2021)

RACE		% OF CASES	% OF DEATHS	% OF HOSPITALIZED CASES	CASES PER MIL.	DEATHS PER MIL.	HOSPITALIZED CASES PER MIL.
Known		78.8%	93.2%	93.8%	5,184.9	143.6	233.6
Unknown		21.1%	6.7%	6.1%	--	--	--
Any		--	--	--	6,574.3	153.9	248.9


  

KNOWN RACE ONLY	% OF POP	% OF CASES	% OF DEATHS	% OF HOSPITALIZED CASES	CASES PER MIL.	DEATHS PER MIL.	HOSPITALIZED CASES PER MIL.
American Indian / Alaskan Native	0.5%	0.9%	1.0%	0.9%	9,260.8	281.7	432.0
Asian	3.0%	1.4%	1.3%	1.0%	2,516.4	62.4	78.8
Black / African American	13.8%	19.3%	20.1%	22.7%	7,248.6	209.3	384.6
Hawaiian / Pacific Islander	< 0.1%	0.1%	< 0.1%	< 0.1%	23,833.5	335.6	671.3
Multiple Race	2.8%	3.2%	0.9%	2.3%	5,864.9	45.8	193.8
Other	1.1%	5.7%	3.3%	3.9%	25,121.4	402.8	763.8
White	78.5%	69.0%	73.1%	68.8%	4,562.4	133.7	205.0


disparity present ⓘ

disparity present but based on small absolute numbers

# Prior 28 Days Metrics By Ethnicity (Apr 20, 2021 – May 18, 2021)

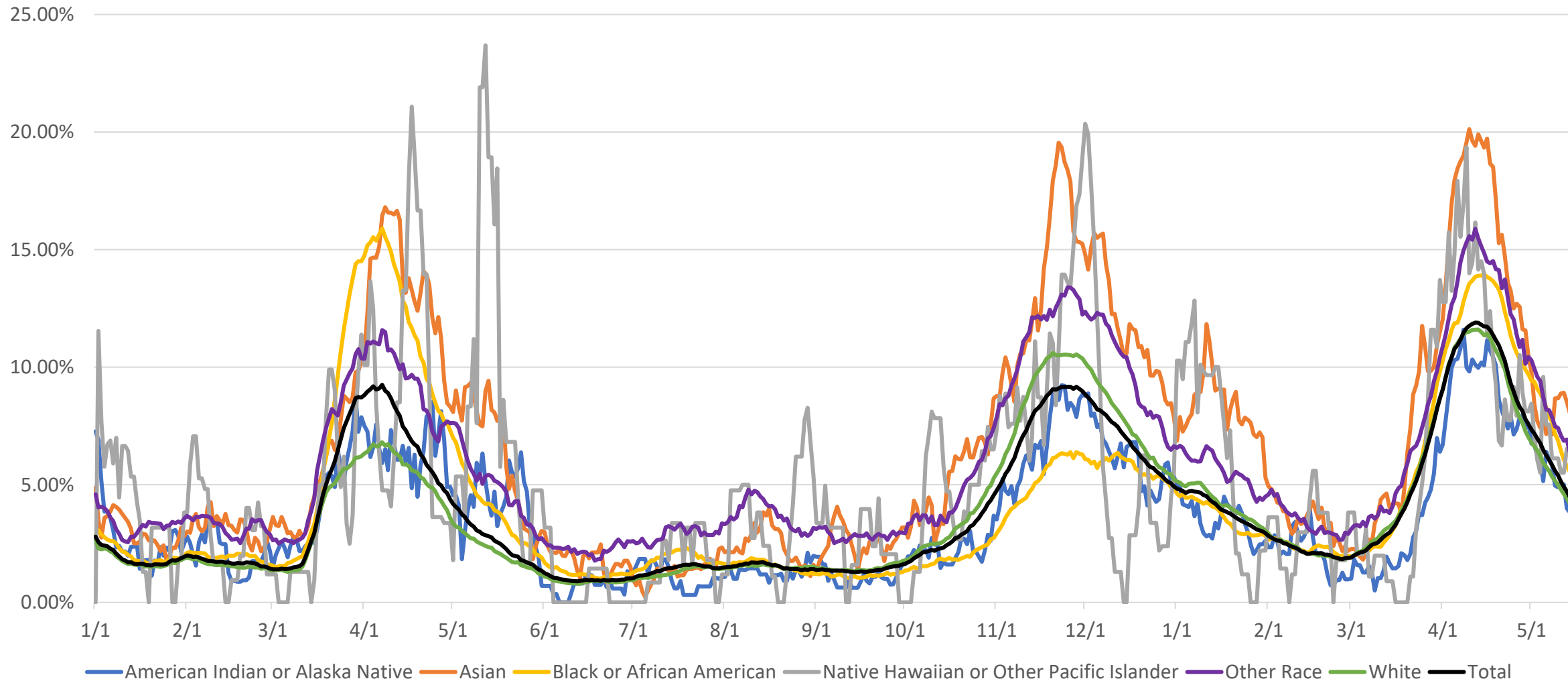
ETHNICITY (HISPANIC) ⚙		% OF CASES ⚙	% OF DEATHS ⚙	% OF HOSPITALIZED CASES ⚙	CASES PER MIL. ⚙	DEATHS PER MIL. ⚙	HOSPITALIZED CASES PER MIL. ⚙
Known Ⓞ		74.4%	86.7%	89.8%	4,893.8	133.5	223.6
Unknown Ⓞ		25.5%	13.2%	10.1%	--	--	--
Any		--	--	--	6,574.3	153.9	248.9
KNOWN ETHNICITY ONLY ⚙	% OF POP ⚙	% OF CASES ⚙	% OF DEATHS ⚙	% OF HOSPITALIZED CASES ⚙	CASES PER MIL. ⚙	DEATHS PER MIL. ⚙	HOSPITALIZED CASES PER MIL. ⚙
Hispanic or Latino	5.0%	 7.2%	3.6%	5.5%	7,047.6	98.4	247.0
Not Hispanic or Latino	94.9%	92.7%	96.3%	94.4%	4,780.4	135.4	222.4

ETHNICITY (ARAB) ⚙		% OF CASES ⚙	% OF DEATHS ⚙	% OF HOSPITALIZED CASES ⚙
Known Ⓞ		51.0%	38.5%	63.5%
Unknown Ⓞ		48.9%	61.4%	36.4%
Any		--	--	--
KNOWN ETHNICITY ONLY ⚙		% OF CASES ⚙	% OF DEATHS ⚙	% OF HOSPITALIZED CASES ⚙
Arabic Ethnicity		4.5%	3.2%	2.5%
Not Arabic Ethnicity		95.4%	96.7%	97.4%

 disparity present Ⓞ

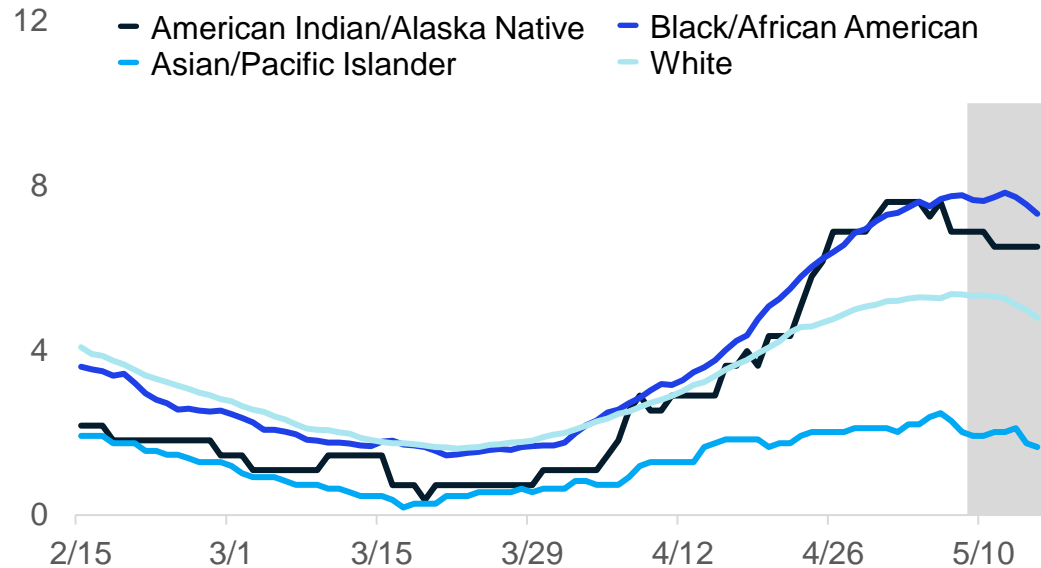
Population denominators are based on Census data, which does not include Arab ethnicity information. Because we do not have denominator data for Arab ethnicity, only a limited set of metrics can be shown.

# Proportion of ED Visits with Coronavirus Symptoms or a COVID-19 Diagnosis Code by Race - Michigan

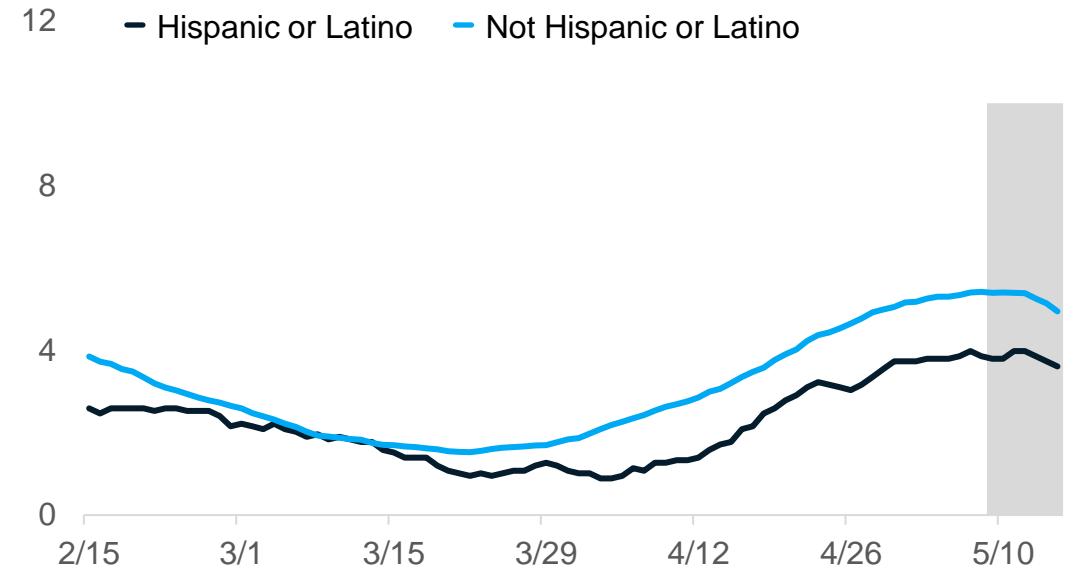


# 30-day rolling average daily deaths per million people by race and ethnicity

## Average daily deaths per million people by race



## Average daily deaths per million people by ethnicity

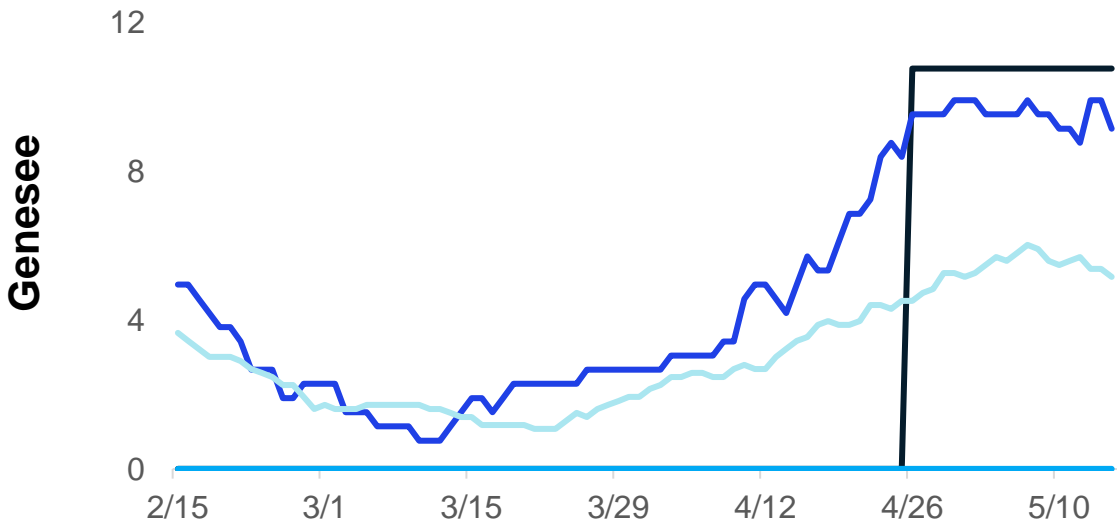
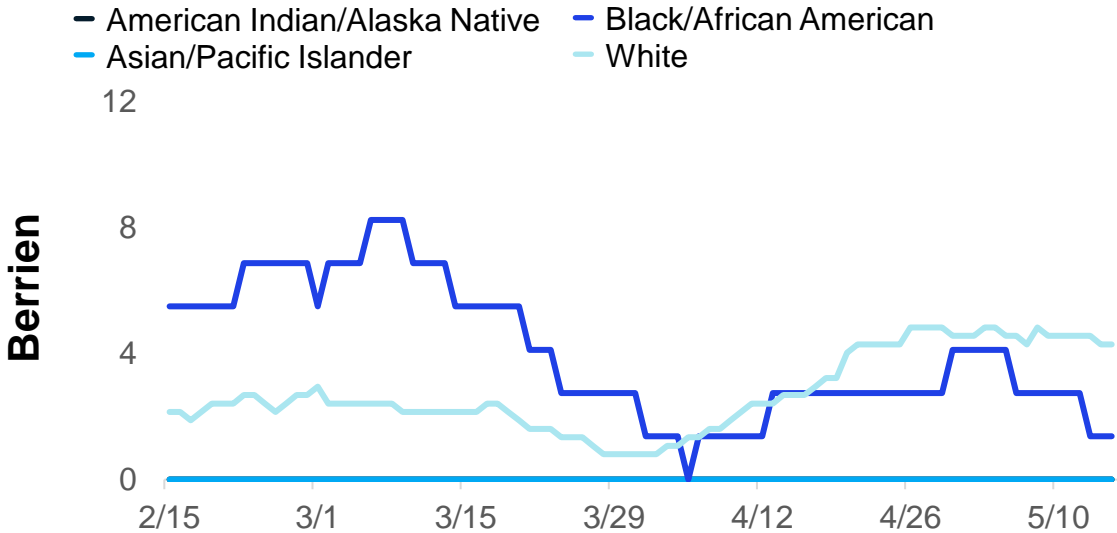


### Updates since last week:

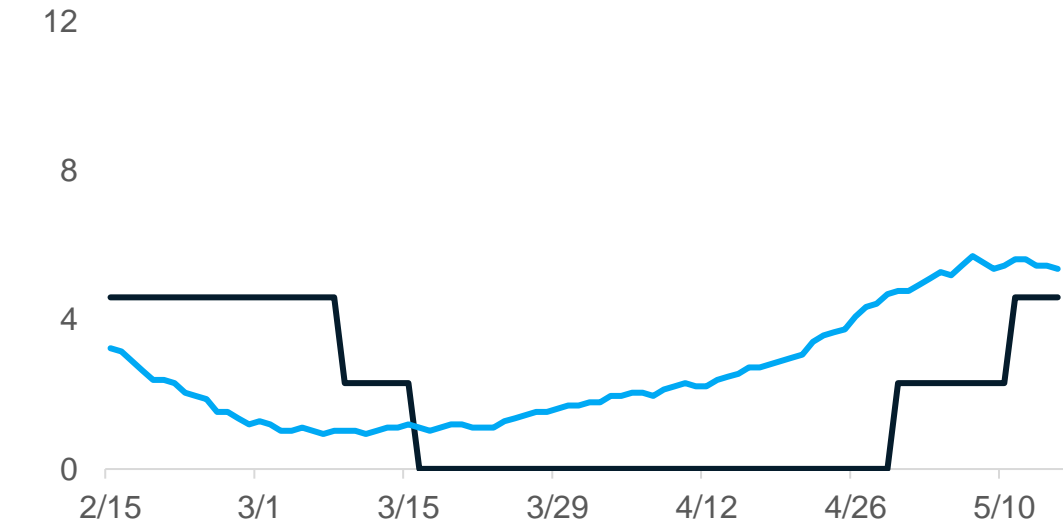
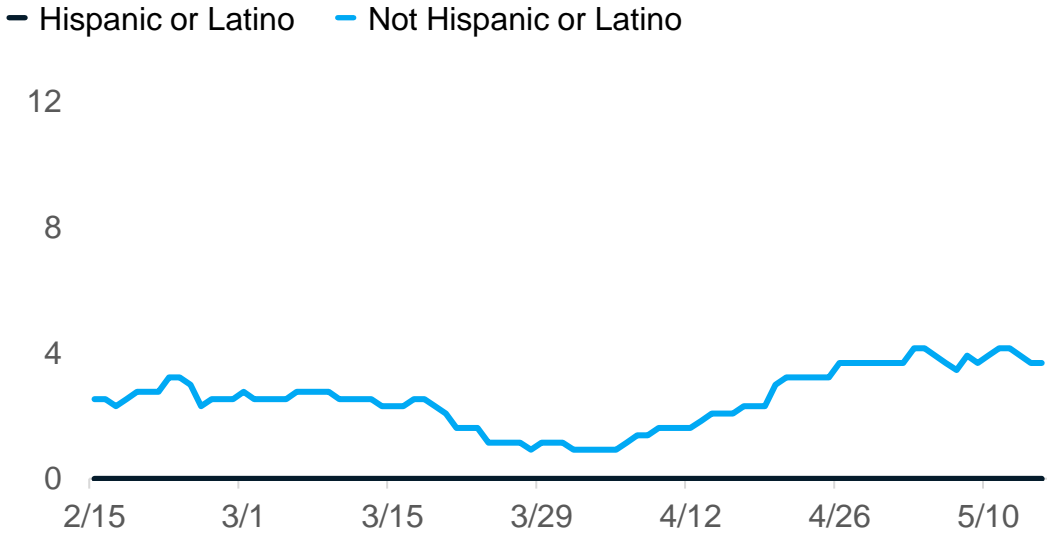
- Deaths are a lagging indicator of cases
- All racial and ethnic groups are seeing a decrease or plateau in COVID deaths
- **American Indian/Alaskan Natives, Blacks and Non-Hispanics/Latinos have the most reported deaths per capita**
- Deaths are not adjusted for confounders (e.g., age, sex, comorbidities)

# Average deaths per million people by race and ethnicity

### Deaths per million (30-day rolling average) by race



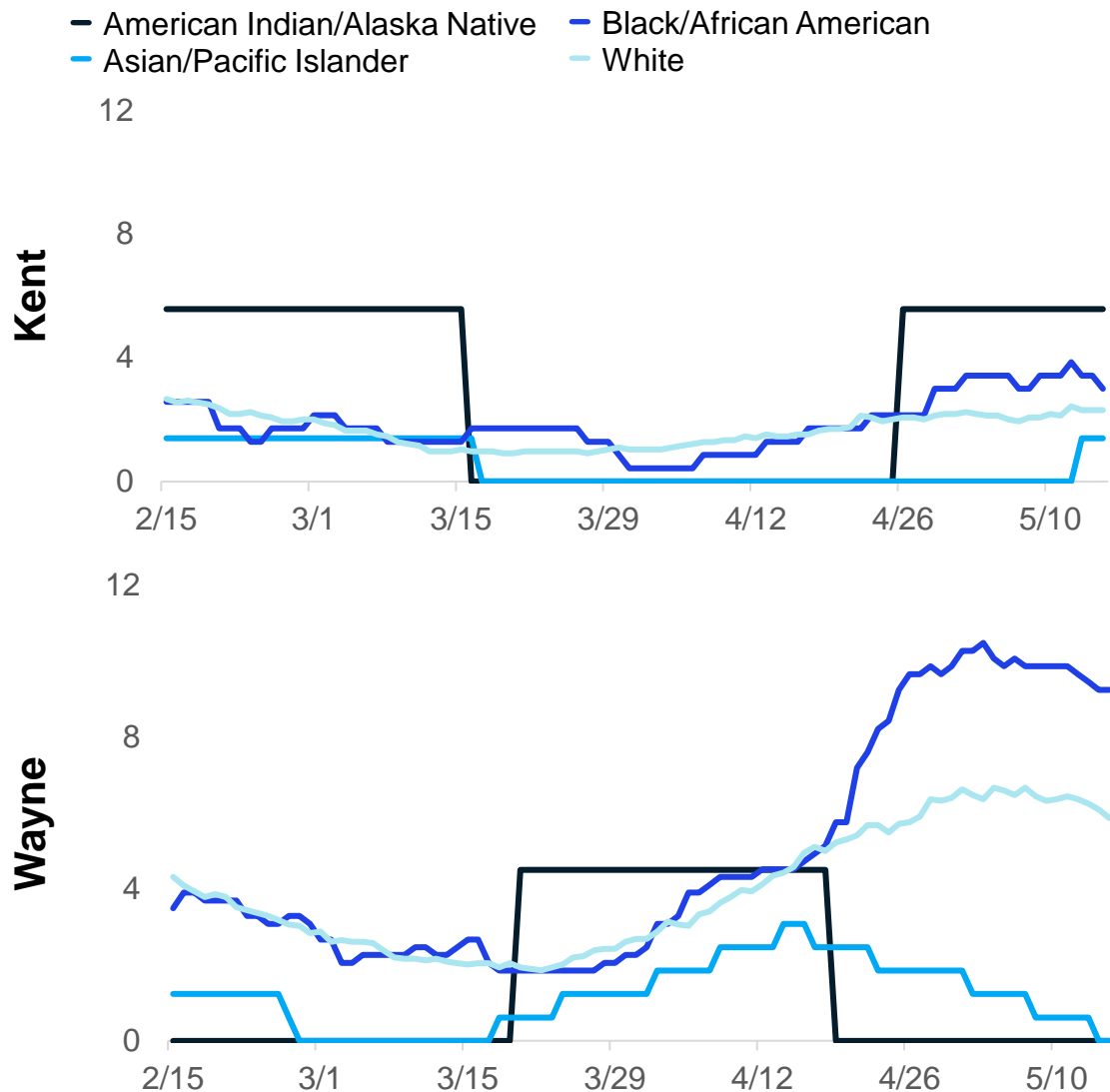
### Deaths per million (30-day rolling avg) by ethnicity



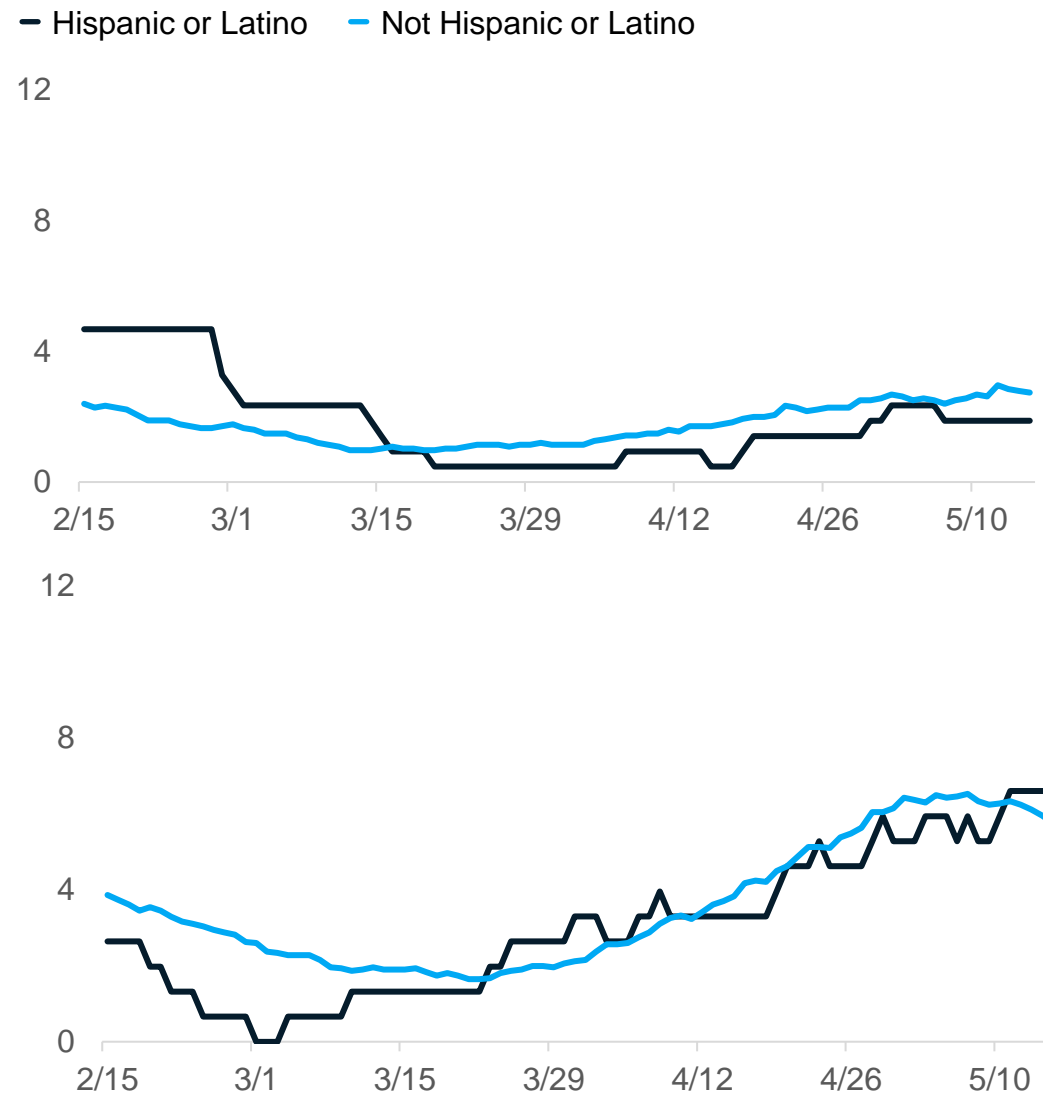
Note: Case information sourced from MDHHS and reflects date of death of confirmed and probable cases. Source: MDHHS – Michigan Disease Surveillance System

# Average daily new cases per million people by race and ethnicity

## Deaths per million (30-day rolling average) by race



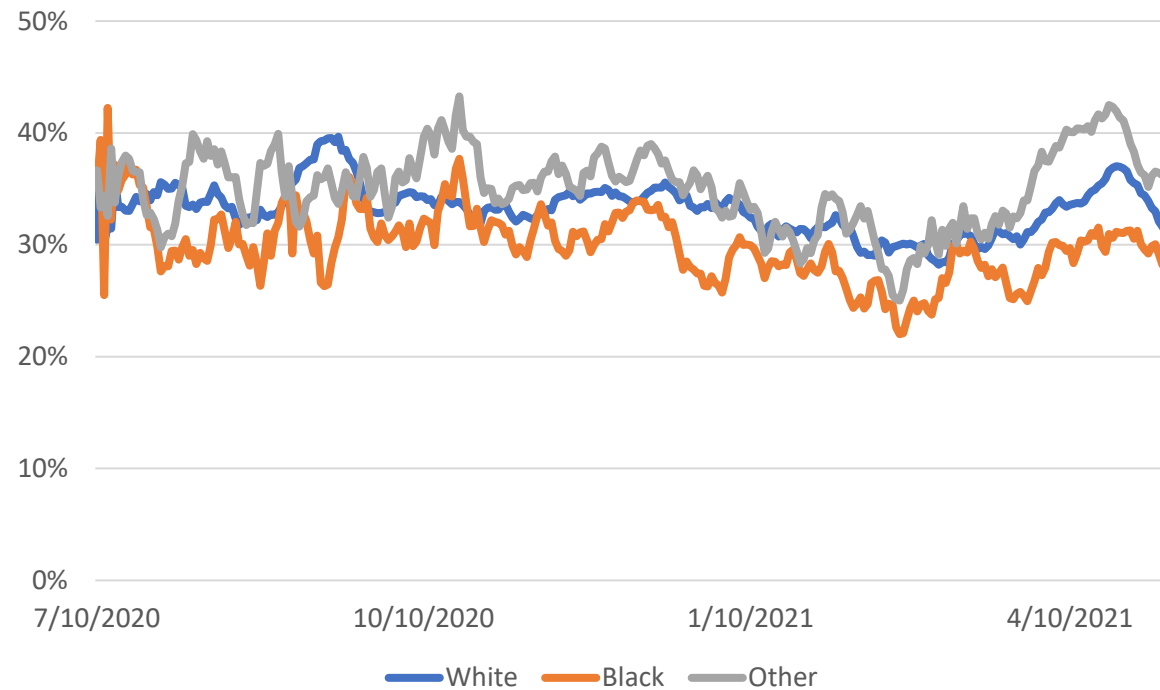
## Deaths per million (30-day rolling avg) by ethnicity



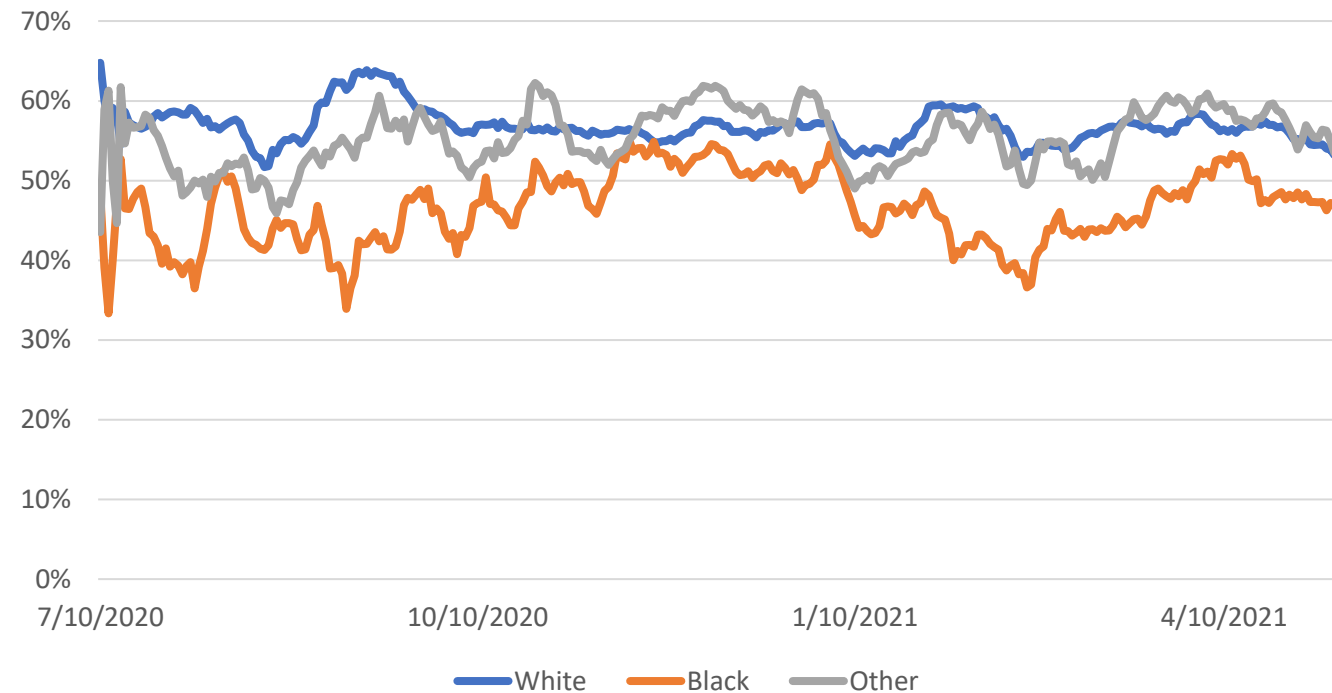
Note: Case information sourced from MDHHS and reflects date of death of confirmed and probable cases. Source: MDHHS – Michigan Disease Surveillance System

# COVID-19 Case Investigation Metrics

% of Cases Quarantining at Symptom Onset by Race (7-day Moving Average)



% of Cases with Known Source of Exposure by Race (7-Day Moving Average)



## Updates since last week:

- Cases who are quarantining at symptom onset and who are aware of the source of infection are signals that case investigation and contract tracing resources are working successfully
- A lower percent of Blacks/African Americans are quarantining and have a known infection source compared to Whites
- Some reasons for disparities may be due to lack of supports to comply with public health recommendations (e.g., paid time off/sick leave)
- Data excludes those with blank or unknown race and ethnicity data



# Coverage Demographics as of 5/18/2021

## Coverage by Age Group

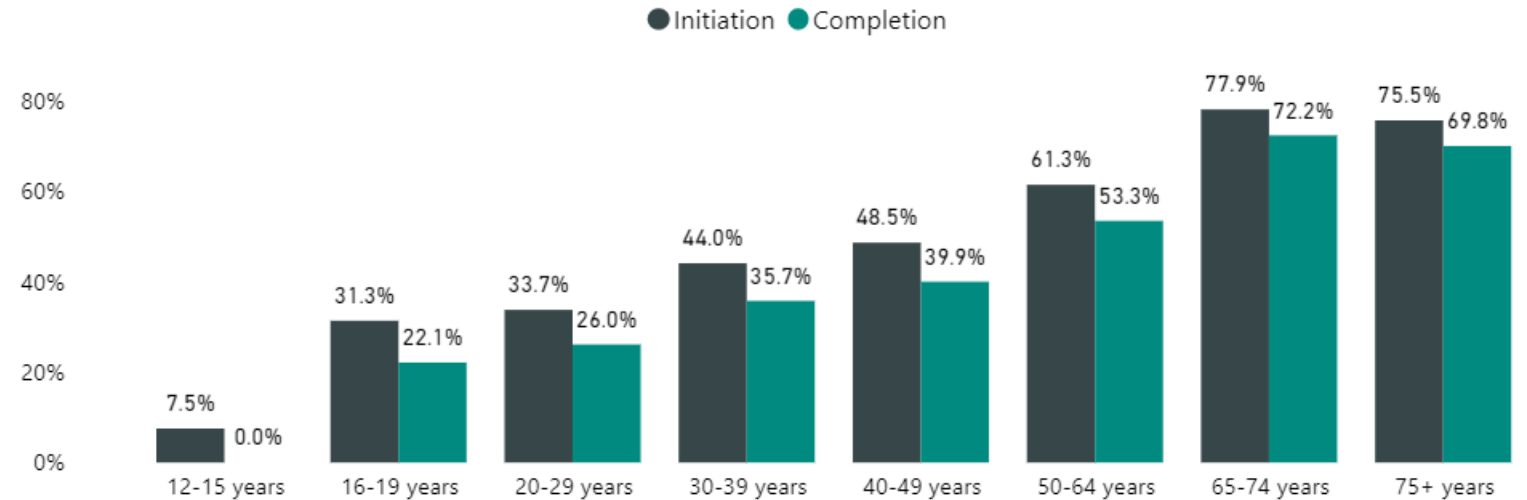
**3,892,489 people** completed series (CDC)

### Age Group

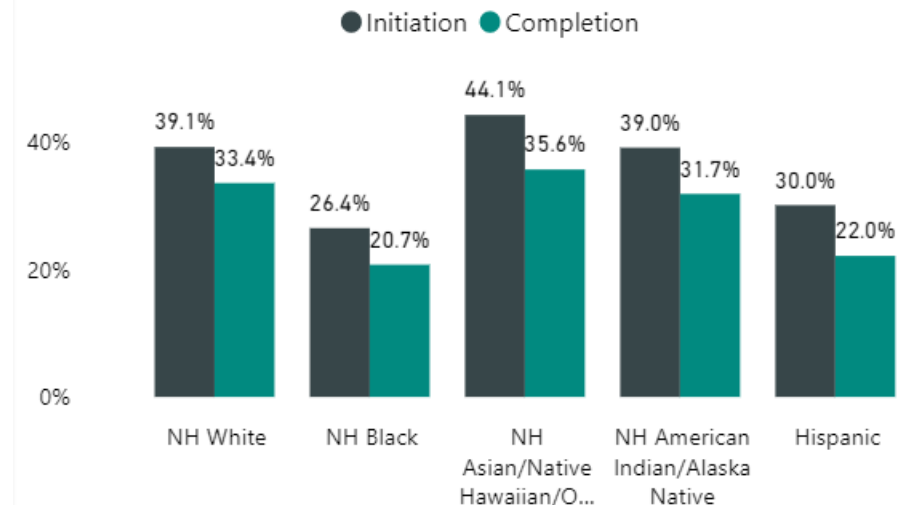
- 68.5% of those 50+ started vaccine series vs 36.9% of 12-49 years
- 61.6% people aged 50 or older have completed their vaccine series

### Race/Ethnicity for 12 and older

- Initiation coverage highest among those of Asian, Native Hawaiian or Pacific Islander Race (44.1%), followed by Non-Hispanic (NH) White (39.1%), American Indian (39.0%), Hispanic (30%) ethnicity, and NH Black or African American (26.4%)
- 24.0% data missing or unknown



## Coverage by Race - State Level

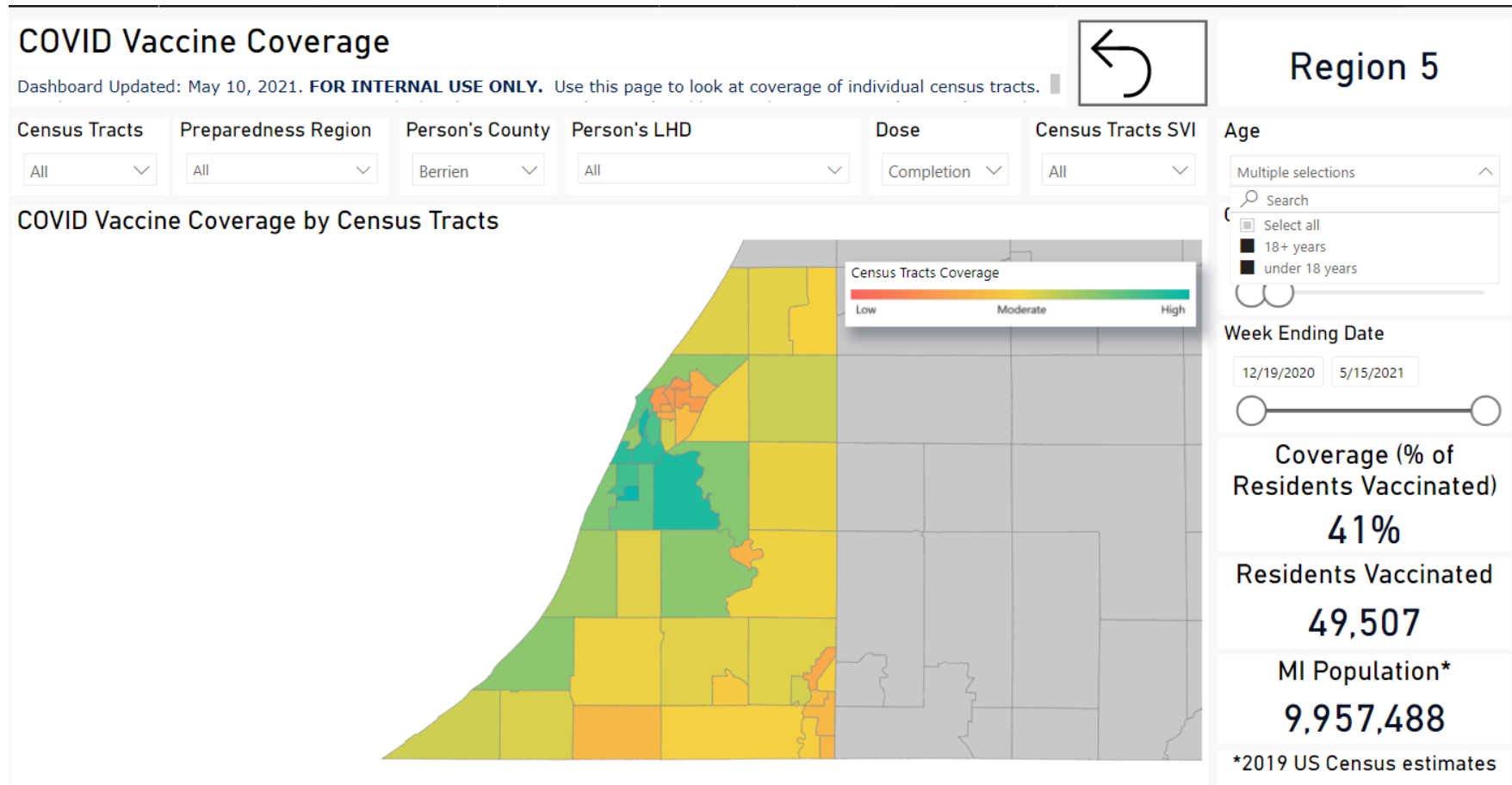


# Percent of Doses Administered by Race, Selected Counties

- Kent County has lowest percent of missing data
- Wayne County has highest percent of missing data
- Percent of doses administered to NH Black individuals was highest in Wayne and Genesee counties
- Percent of doses administered to Hispanic individuals was highest in Kent and Wayne counties

	Michigan	Berrien	Genesee	Kent	Wayne (incl Detroit)
NH White	58.32	68.18	62.12	75.52	39.23
Unknown	24.81	15.34	18.78	9.16	30.66
NH Black	6.50	7.49	11.52	5.06	17.48
NH Other Race	4.77	3.45	4.47	4.01	6.45
NH Asian /Native Hawaiian/Other Pacific Islander	2.83	3.31	1.71	3.03	3.06
Hispanic	2.37	1.97	0.99	2.84	2.85
NH American Indian/Alaskan Native	0.40	0.25	0.41	0.37	0.27

# Berrien: vaccine coverage for all ages and races by census tract



# Genesee County vaccine completion by census tract

## COVID Vaccine Coverage

Dashboard Updated: May 10, 2021. **FOR INTERNAL USE ONLY.** Use this page to look at coverage of individual census tracts.

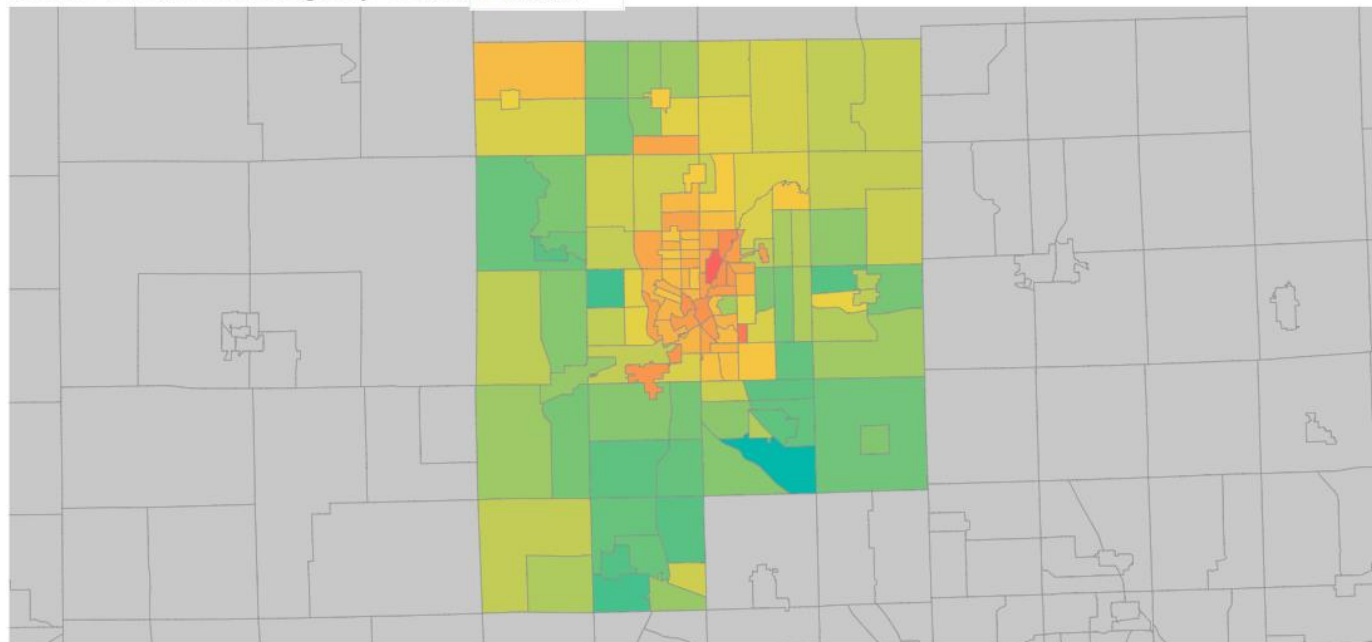


Region 3

Census Tracts: All  
Preparedness Region: All  
Person's County: Genesee  
Person's LHD: All  
Dose: Completion  
Census Tracts SVI: All  
Age: 18+ years

### COVID Vaccine Coverage by Census

- Genesee



### Coverage Slicer

0.00% 150.00%



### Week Ending Date

12/19/2020 5/15/2021



Coverage (% of Residents Vaccinated)

**38%**

Residents Vaccinated

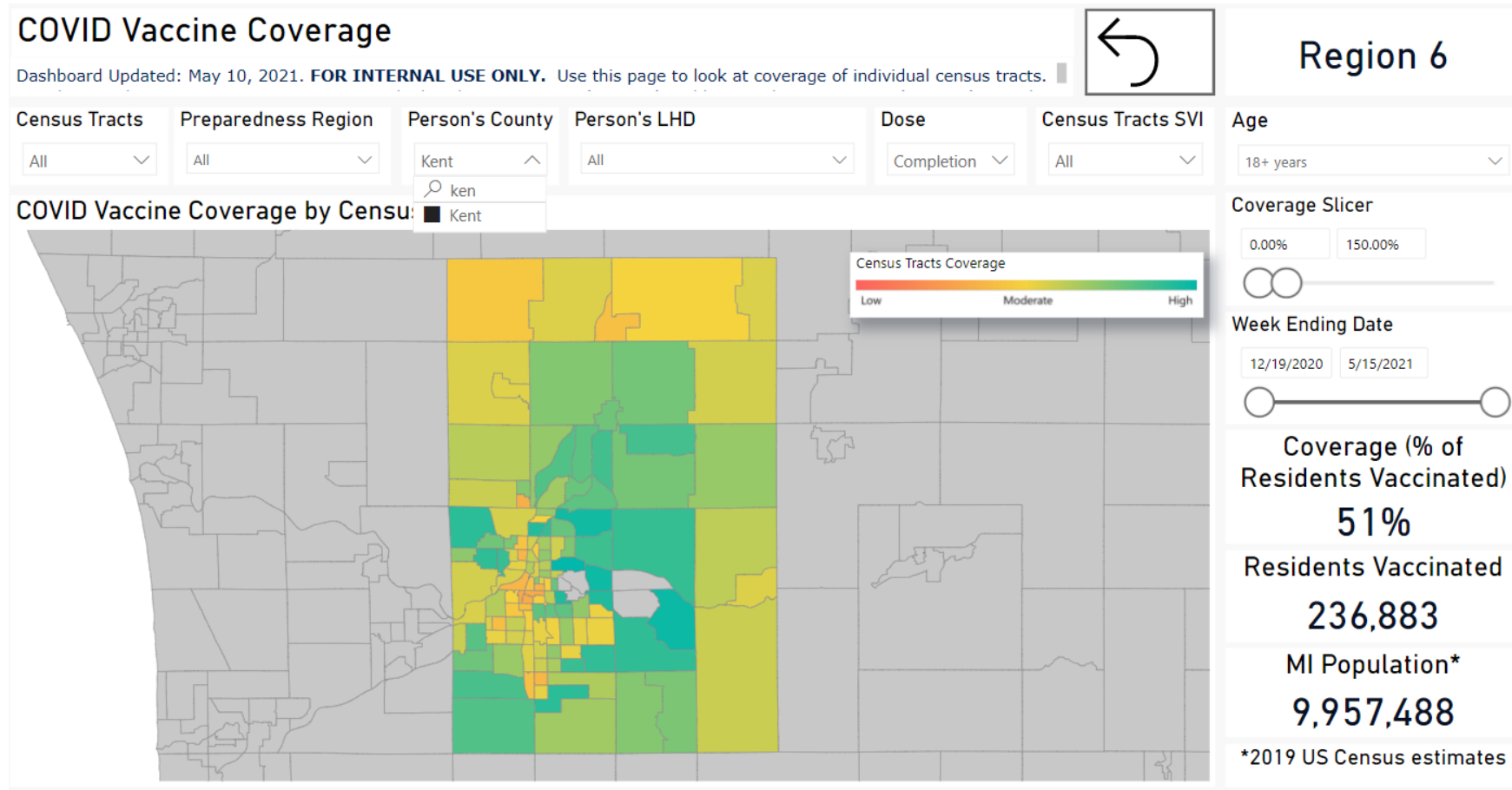
**119,139**

MI Population\*

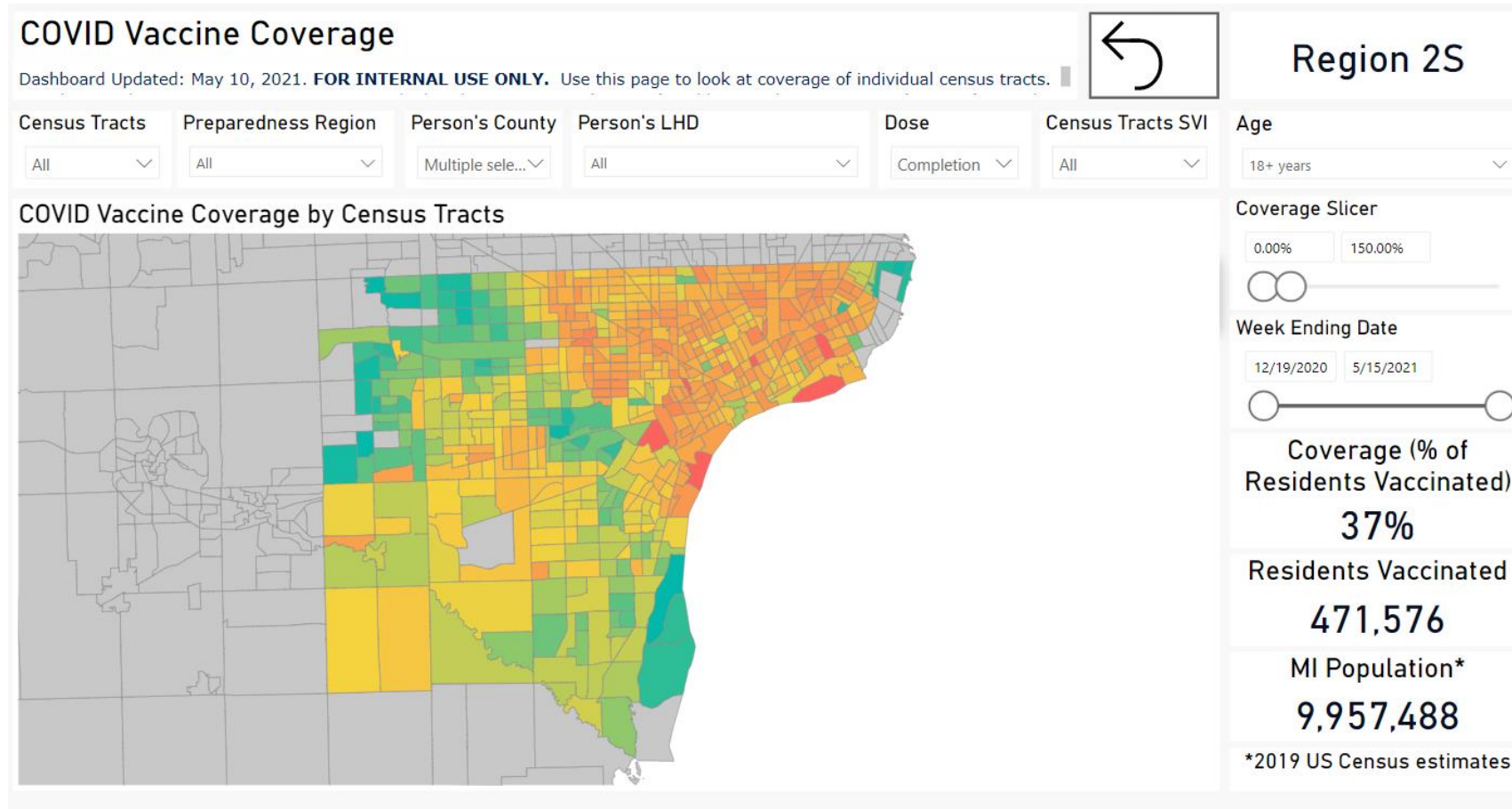
**9,957,488**

\*2019 US Census estimates

# Kent County vaccine coverage by census tract



# Wayne County (including Detroit) vaccine completion by census tract



# Appendix

# Percent of all doses administered: first or second dose by race and ethnicity

	Michigan		Berrien		Genesee		Kent		Wayne (incl Detroit)	
	First	Second	First	Second	First	Second	First	Second	First	Second
NH White	32.96	25.36	37.93	30.25	35.77	26.35	40.93	34.59	22.53	16.70
Unknown	14.06	10.75	8.85	6.49	11.22	7.56	5.26	3.90	17.63	13.03
NH Black	3.83	2.67	4.41	3.08	6.79	4.73	2.89	2.17	10.35	7.13
NH Other Race	2.61	2.16	2.14	1.31	2.45	2.02	2.43	1.58	3.55	2.90
NH A/NH/OPI	1.65	1.18	1.82	1.49	1.05	0.66	1.66	1.37	1.78	1.28
Hispanic	1.46	0.91	1.13	0.84	0.59	0.40	1.57	1.27	1.80	1.05
NH AI/AN	0.23	0.17	0.15	0.10	0.24	0.17	0.22	0.15	0.16	0.11

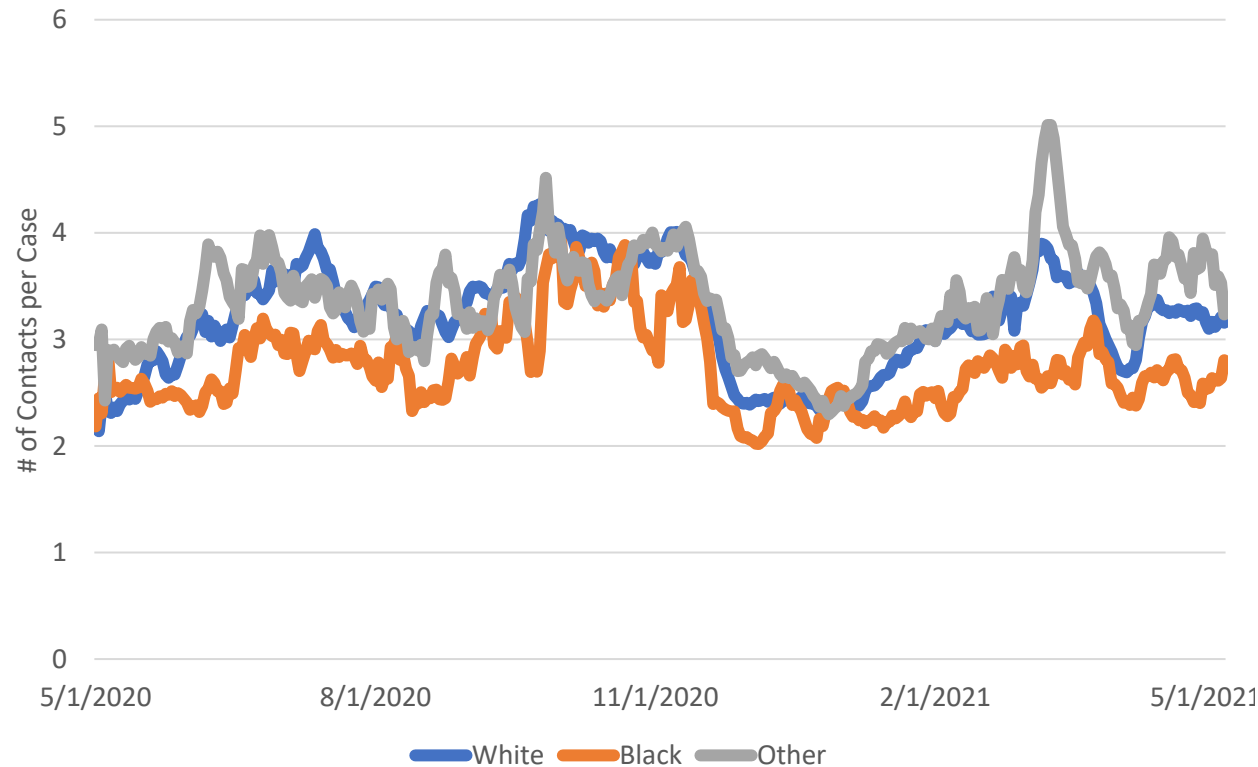


# Percent of Population who has Completed Vaccination Series

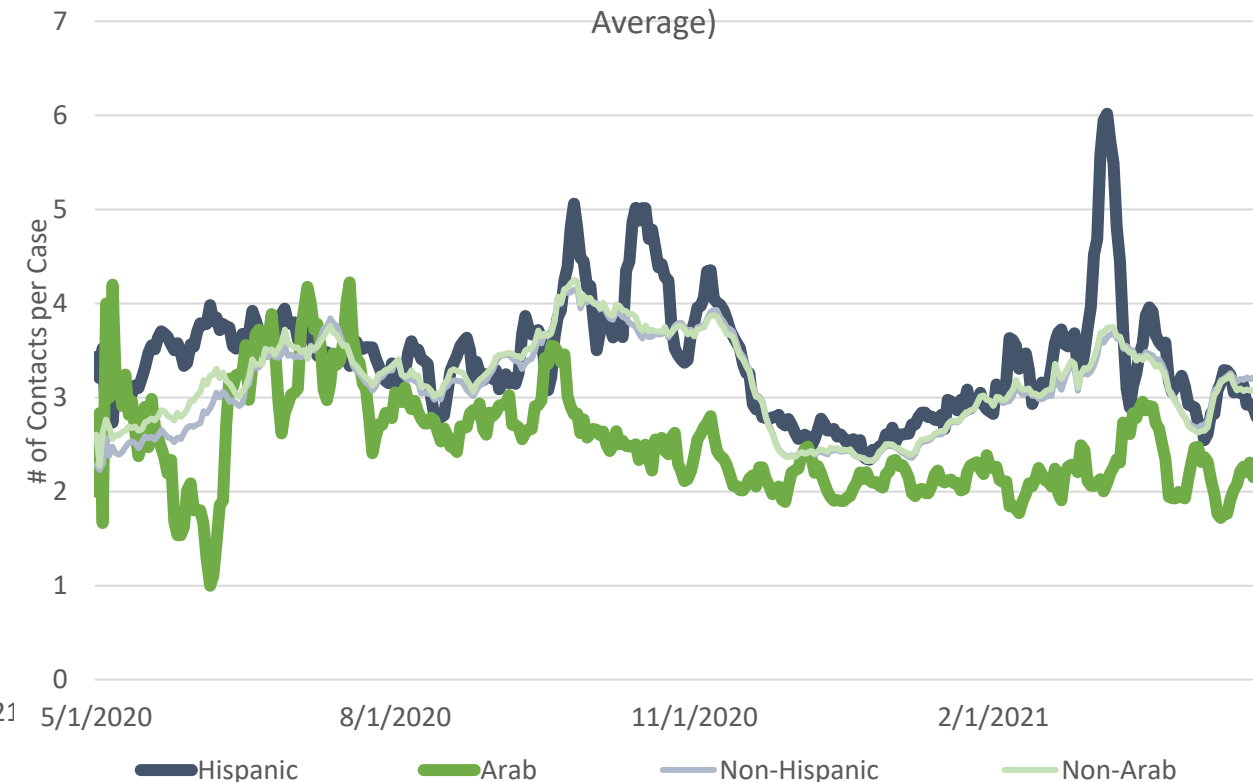
		Berrien	Genesee	Kent	Wayne (incl Detroit)
County		41	38	51	37
SVI Census Tracts	Most vulnerable (4)	27	23	36	24
	3	36	36	44	34
	2	43	42	52	44
	Least vulnerable (1)	52	46	55	54

# COVID-19 Case Investigation Metrics

Number of Contacts per COVID Case by Race (7-Day Moving Average)



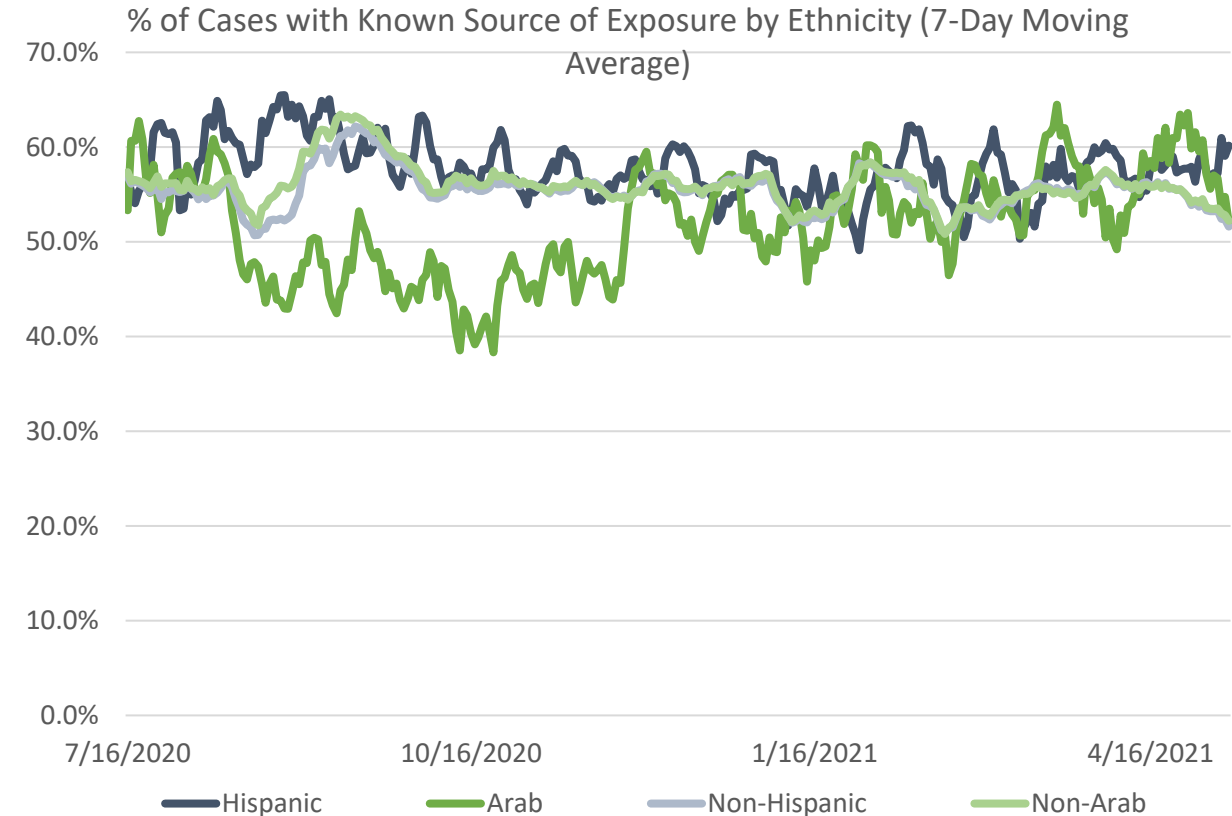
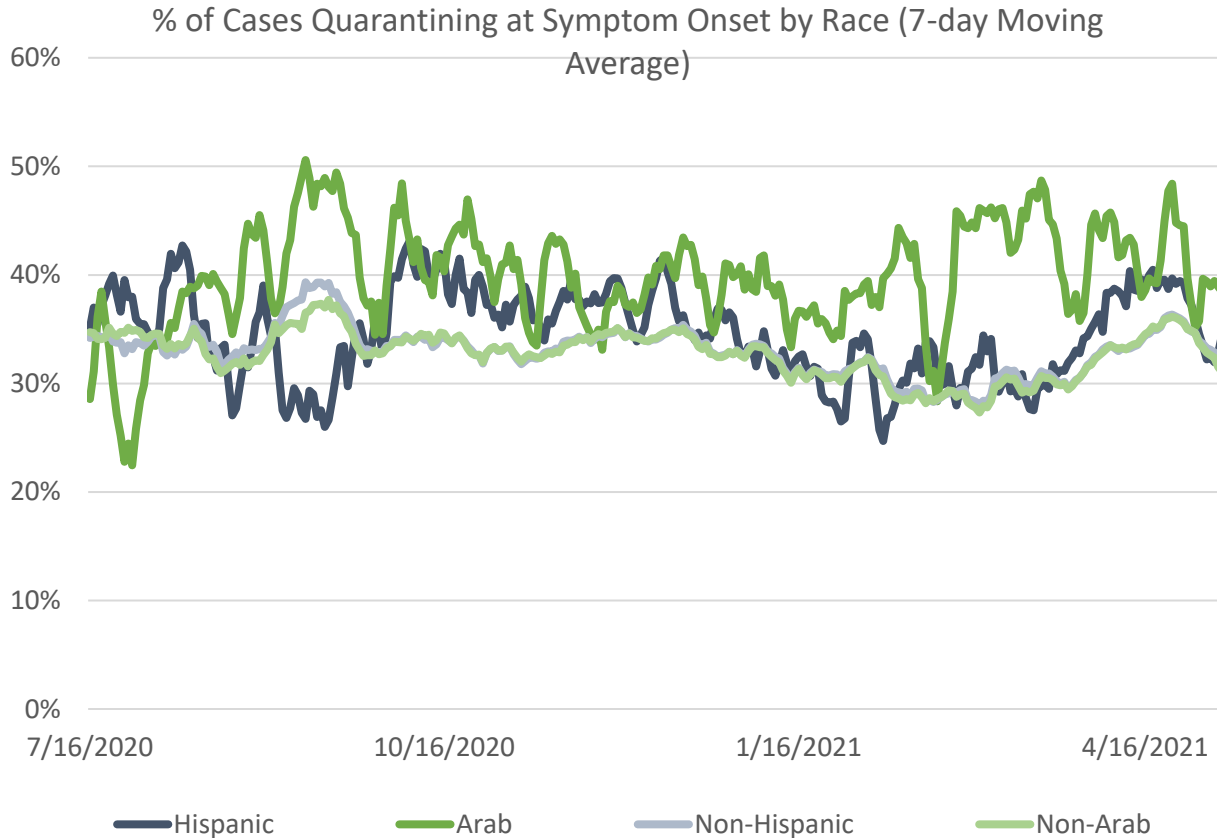
Number of Contacts per COVID Case by Ethnicity (7-Day Moving Average)



## Updates since last week:

- Number of contacts provides indirect insight on mobility and interaction where exposure to SARS-CoV-2 may occur; fewer contacts indicate that public policy or human behavior is preventing widespread transmission
- Number of contacts are obtained via case investigation interviews
- However, lower number of contacts may also indicate hesitancy to reveal close contacts or uncertainty of all close contacts
- Blacks and Arabs have reported fewer contacts, especially so in 2021

# COVID-19 Case Investigation Metrics



## Updates since last week:

- Cases who are quarantining at symptom onset and who are aware of the source of infection indicate that case investigation and contact tracing resources are working successfully
- A lower percent of Blacks/African Americans are quarantining and have a known infection source compared to Whites
- Some reasons for disparities may be due to lack of supports to comply with public health recommendations (e.g., paid time off/sick leave)
- Data excludes those with blank or unknown race and ethnicity data