

UPDATED MASKING GUIDANCE FOR MICHIGANDERS

Michigan.gov/Coronavirus

February 16, 2022

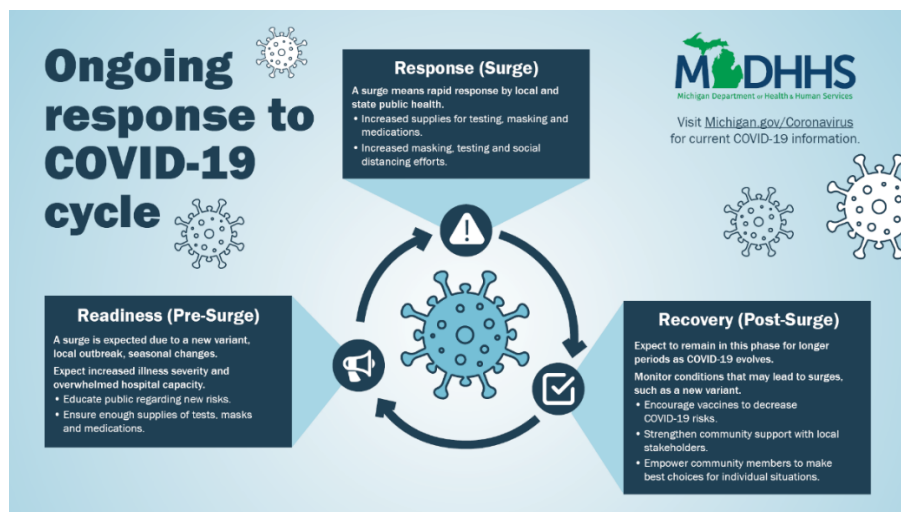
The Michigan Department of Health and Human Services (MDHHS) continues to prioritize public health and promote health and wellness for all families and communities amidst the impacts of COVID-19. While vaccination remains one of the most important public health tools to protect Michiganders from severe outcomes due to COVID-19, there are additional tools such as [isolation and quarantine](#), [therapeutics](#), [testing](#) and increasing use of environmental interventions (e.g., ventilation).

Based on current conditions, MDHHS is expiring the Public Health Advisory on Masking in Indoor Public Settings, including school settings.

Moving forward, the COVID-19 response cycle can be broken down into three key phases:

- **Response** – Local and state public health implement rapid response to a surge. The public may be advised to increase masking, testing and social distancing.
- **Recovery** – Post-surge. No immediate resurgence predicted. Local and state public health will monitor conditions that could lead to future surges.
- **Readiness** – A surge in cases is expected, with implications on severity of illness and hospital capacity. Increased communication to the public regarding possible new risks.

MDHHS supports adjusting mask recommendations as we cycle through periods of response, recovery and readiness and following local health department decisions based on local conditions. Current case rates and hospitalizations, and increased access to vaccines, testing and therapies, indicate Michigan is entering a **post-surge recovery phase** of the cycle:



During this post-surge recovery phase, MDHHS recommends that all individuals, regardless of vaccination status, continue to practice masking in high-risk congregate settings (including long-term and health care facilities, jails and correctional facilities and shelters).

All individuals, regardless of vaccination status, should also wear a mask during isolation and quarantine periods to stop further community spread of COVID-19.

When to Wear a Mask During the Post-Surge Recovery Phase

Individuals should still practice masking in high-risk congregate settings, such as long-term care and health care facilities, jails, correctional facilities, and shelters.

All individuals, regardless of vaccination status, should wear a mask during [isolation](#) and [quarantine](#) periods. Learn more about [isolation and quarantine periods](#). This is an important step to protect family, friends, and neighbors and stop further community spread of COVID-19.

There may be local masking guidance, policies and/or orders from local health departments, organizations, and/or school districts that must be followed. Policies established by event organizers and businesses may be instituted to fit the specific needs of their customers and should be followed.

Making Personal Decisions About Mask Use for Those Not In The Above Categories

Masks are an important tool in mitigating spread of COVID-19 and individuals who feel sick, may be at higher risk of infection, or who feel better protected when masked should choose when they feel comfortable masking.

Michiganders should consider their individual and family members' risk factors and vaccination status when making the personal decision whether to mask. Those with chronic illness or who are immunocompromised are at higher risk for poor outcomes from COVID and would benefit most from masking in indoor settings. These risk factors may include age, medical conditions, and vaccination status.

The use of a well-fitting mask provides benefits and protection to both the wearer and to those in close contact to the wearer. Masks help reduce inhalation of potential virus droplets for the wearer (filtration) as well as to decrease possibility of transmission of virus to those close by the wearer (source control).

Mask Use During Future Phases

Recommendations regarding masking may change as conditions evolve – such changes could include the presence of a new variant that increases the risk to the public, or an increased number of cases that strains the healthcare system. During future times of surge, additional access to testing resources, vaccination clinics, and therapeutic treatment may be made available as the situation warrants.

MDHHS continues to recommend the use of layered mitigation strategies for Michiganders:

- **Get vaccinated against COVID-19.** Michiganders should get up to date on their COVID-19 vaccine. Learn more about vaccines and when you're up to date at Michigan.gov/COVIDVaccine.
- **Therapeutics.** After testing positive for COVID-19, individuals who are unvaccinated, high-risk and/or are immunocompromised should talk to their doctors about whether they meet eligibility criteria for antibody or antiviral treatment to help with their recovery. Learn more about [COVID-19 Therapeutics](#).
- **Isolation and Quarantine.** Staying away from others when you are sick or were recently exposed to COVID-19 are important tools to preventing further spread of the virus. Learn more about [what happens when you have or are exposed to COVID-19](#)

- **Get tested if you are exposed or have symptoms.** Anyone with signs or symptoms of COVID-19 should get tested regardless of vaccination status or prior infection. Testing before unmasked gatherings provides an additional layer of protection. Find a test site at Michigan.gov/CoronavirusTest. Take additional steps to protect yourself and others. For additional guidance on mitigation strategies see [How to Protect Yourself and Others](#).

*The [CDC requires](#) that all persons wear masks on planes, buses, trains, and other forms of public transportation, as well as at airports and stations.