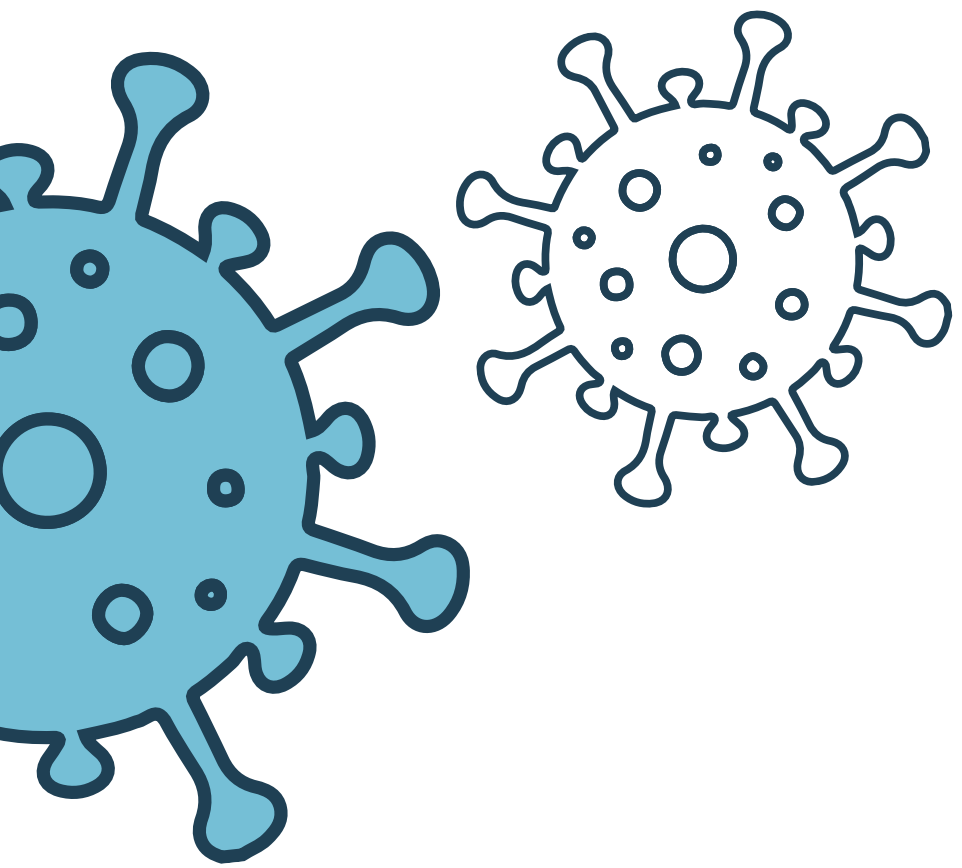


Preliminary COVID-19 Vaccination Timeline

Dates are estimated and expected to change based on vaccine availability.



Anyone age 16 or older

All remaining essential workers

Other essential frontline workers and people age 16-64 years with a health condition that puts them at high risk for serious COVID-19 complications

Michiganders age 65 and older, frontline essential workers, child care and pre-K through high school staff, and congregate care facilities

Health care workers and long term care residents and staff

Dec

January

February

March

April

May

June

July

August

September