

ALGONAC STATE PARK PHASE 2 GENERAL MANAGEMENT PLAN

LONG RANGE ACTION GOALS

Long range management guidance focused on the specific natural resources, historic/cultural resources, recreation opportunities and education/interpretation opportunities of Algonac State Park.

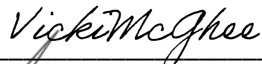




Michigan Department of Natural Resources
Parks and Recreation Division
05/12/2022

Page left intentionally blank

This plan was prepared by:
Matt Lincoln, Park Management Plan Assistant
Michigan Department of Natural Resources, Parks & Recreation Division

Algonac State Park Phase 2 General Management Plan Approvals:

 _____ Chief, Planning & Infrastructure Section	<u>5-23-2022</u> Date
 _____ Chief, Field Operations Section	_____ Date
 _____ Chief, Parks & Recreation Division	<u>6/3/2022</u> Date



Visitors enjoying the St. Clair River shoreline

PLAN APPROVAL RECOMMENDATIONS:

Reviewed and approved via e-mail by:

Dennis Wilson, Park Supervisor

John Terpstra, Regional Field Planner

Mike Terrell, Metro Detroit District Supervisor

Bob Clancy, Ecological Restoration Specialist

Greg Norwood, Stewardship Ecologist

Debbie Jensen, Park Management Plan Administrator

Reviewed and approved by:

Parks and Recreation Division Section Chiefs

Presented for information to:

MSPAC – STEWARDSHIP SUBCOMMITTEE

NRC – MICHIGAN STATE PARK ADVISORY COMMITTEE



Visitors at the Gun Range

Table of Contents

- 1. Introduction 6
 - 1.1. Planning Objectives 6
 - 1.2. Planning Process Overview..... 6
 - 1.3. Planning Team..... 7
 - 1.4. Public Input Overview..... 7
- 2. Overview of Phase 1 General Management Plan 9
 - 2.1. Significance Statements..... 9
 - 2.2. Management Zones 10
 - 2.3. Changes Since Previously Approved Phase 1 and 2 General Management Plans 12
 - 2.4. Supporting Documentation Updates 14
- 3. 10–Year Action Goals 15
- 4. Implementation Strategy..... 21
 - 4.1. Implementation Toolbox 21
 - 4.2. Documentation of Changes 22
 - 4.3. Documentation of Accomplishments..... 22
 - 4.4. Five-year Review Process 22

Appendices

- Appendix A: Legal Mandates Update**
- Appendix B: Stakeholder and Public Input Summary**
- Appendix C: Onsite Use and User Study Report**
- Appendix D: Capital Outlay Opinion of Probable Costs**
- Appendix E: Resource Maps**

1. Introduction

Algonac State Park is located in southeast Michigan on the St. Clair River, two miles north of the City of Algonac, St. Clair County, Michigan. The park was established in 1937 for the purposes of protecting natural and cultural resources and to provide recreation and scenic viewing of the St. Clair River. The park is approximately 1,532 acres in size with two modern campgrounds, hiking trails, a regional bike trail, natural areas, land open to hunting, day use area, hand gun range and archery range. One of the most popular recreation activities at the park is freighter viewing on the St. Clair River.

The General Management Plan (GMP) guides the future long-term management of Algonac State Park and is based on the mission of the Parks and Recreation Division (PRD): “to acquire, protect and preserve the natural and cultural features of Michigan’s unique resources, and to provide access to land and water public recreation and education opportunities”.

1.1. Planning Objectives

The objective of the GMP is to bring together PRD staff, representatives from other Department of Natural Resource (DNR) divisions, stakeholders and the public into a planning process that directs management decisions and implementation strategies for the park.

The Phase 1 GMP for Algonac State Park, approved in 2005, established a 20-year management zone plan and defined the purpose and significance of the park. The supporting analysis included in the Phase 1 GMP provides important background information on the park such as park setting, area demographics, history, land ownership, legal mandates, and cultural, natural and recreation resources. This Phase 2 GMP builds upon the previous planning step and identifies 10-year action goals to be accomplished in the park as a whole and in each of the management zones. These are implementation items for park staff and partners, addressing infrastructure, park management, and operations that impact the resource protection and visitor experience at the park. This plan updates and replaces the original Phase 2 GMP, which was approved in 2008. While the Phase 2 GMP addresses some specific natural resource goals, a separate Stewardship Plan was developed to identify targets for conservation and related natural resource goals and management strategies and acts as a supplement to the GMP.

1.2. Planning Process Overview

The Algonac State Park planning team met periodically over a ten-month period, beginning in spring, 2021. For this updated Phase 2 GMP, the first step was to review the Phase 1 GMP to ensure that no conditions have changed that would result in the need to amend the overall guiding document. The planning team also reviewed the 2008 Phase 2 GMP to determine if there were any actions that should be carried forwards to this new plan.

Input was sought from stakeholders and the public throughout the planning process to ensure the DNR is responsive to its partners and visitors. Stakeholders were invited to provide input early in the planning process through a workshop designed to identify strengths, challenges, and opportunities at Algonac State

Park. An on-site survey conducted by Michigan State University (MSU), with assistance from park staff in the summer and fall of 2018, also provided insight on park use, users' satisfaction, and desires. The planning team used this information to guide the development of the draft Phase 2 GMP. The public was invited to review and comment on the draft plan either online or at a virtual public input meeting. The planning team reviewed all the comments received before recommending the final plan for adoption.

1.3. Planning Team

This Phase 2 General Management Plan was developed with valuable input and expertise of the planning team.

NAME	TITLE	DIVISION
Dennis Wilson	Unit Supervisor	Parks and Recreation Division
Debbie Jensen	Management Plan Administrator	Parks and Recreation Division
Matt Lincoln	Lands Program Manager/Plan Administrator	Parks and Recreation Division
Greg Norwood	Stewardship Ecologist	Parks and Recreation Division
Mike Terrell	District Supervisor	Parks and Recreation Division
John Terpstra	Regional Field Planner	Parks and Recreation Division
Peter Rose	Geologist	Minerals Management
Chris Maher	Lieutenant	Law Enforcement Division
Cleyo Harris	Fisheries Biologist	Fisheries Division
Natalie Elkins	K-12 Outreach Specialist	Marketing and Outreach Division
Matt Feldpausch	Fire Officer	Forest Resources Division
John Darling	Wildlife Biologist	Wildlife Division
Nikki VanBloem	Southeast Trails Specialist	Parks and Recreation Division
Lisa Gamero	Cultural Resources Specialist	Parks and Recreation Division

1.4. Public Input Overview

On-site Survey

An on-site survey was conducted by Michigan State University (MSU) between June and October 2018 as part of a wider study at select state parks to better understand park use and users. This survey provided representative sampling of park visitors to ascertain visitor demographics, park experience and suggested changes/things not to change. Of the 541 questionnaires distributed to visitors, 183 were completed and returned by camper respondents and 45 were returned by day use visitors who arrived by vehicle. The data analysis showed that the average amount of time a day visitor vehicle was in the park was 3.9 hours and the day visitor party averaged 1.8 people per vehicle. For camping respondents, the average was 2.3 people per vehicle.

Of those surveyed, 23 percent of day use visitors and 14 percent of campers reported one or more persons in their party with a physical impairment that impacted their ability to participate in certain types of recreation activities. This was the highest of all parks surveyed in 2018.

The most common activities undertaken by campers, other than camping, were scenic/freighter viewing hiking/walking, bicycling on a paved road and photography. The most popular day use activities were

scenic/freighter viewing, hiking/walking, bicycling on a paved road and photography. The most important park activities, as identified by campers, were camping, scenic viewing and swimming.

Park visitor spending in the local area of Algonac State Park was substantial. Campers from a single vehicle reported spending an average of \$174 in the 24 hours prior to being surveyed with 94% spending something within 20 miles of the park. The greatest average amounts were for lodging fees, food and beverages from a store and restaurant/bar meals and drinks. Day visitor spending averaged \$52 per vehicle with 67% spending something in the local area in the past 24 hours. The greatest portion of day visitor spending was on food and beverages from a store, restaurant/bar meals and drinks and vehicle related spending.

Visitors were generally very satisfied with their visit, giving the park a favorable level of satisfaction score of 8.6 for day visitors on a scale of 1 to 9, with 9 being highly satisfied. Camping respondents answered slightly lower at 8.0. Some challenges were identified including the need for better facilities and abundant mosquitos. Respondents identified better campground facilities and upgraded electric service at campsites when asked what changes they would like to see. Day use visitors identified better facilities needed at the shooting range and improved access for persons with disabilities throughout the park as areas of improvement. The full On-site Use and User Study Report is provided in Appendix C.

Stakeholder Meeting

A stakeholder meeting was held on June 24, 2021, in a virtual format using Microsoft TEAMS, to guide the Phase 2 GMP for Algonac State Park. Participants were invited to provide their input, identifying strengths, challenges and opportunities related to the park. A total of 13 participants represented government, business and tourism, and non-profit organizations from around the region. The meeting began with a short presentation of the Phase 1 GMP that was completed in 2005 and a review of the planning process for this Phase 2 plan. A full report of the meeting is provided in Appendix B.

Strengths identified by stakeholder representatives in attendance included location, freighter viewing, fishing, regional bike trail, archery range and gun range, hiking trails, camping and natural areas.

Challenges identified by stakeholders in attendance included poor road conditions, poor restroom facilities, unpaved riverside parking area, mosquitos, lack of WiFi or cell service and understaffed shooting ranges.

Opportunities identified include more events in the day use area, bicycle maintenance station, ADA accessible hunting blind, playground upgrades, paved riverside parking lot, dog park and invasive species control.

Virtual Public Input Meeting

A virtual public input meeting was held online via the GoToWebinar application on January 20, 2022 at 6:00pm to review the Phase 2 General Management Plan and solicit comment on the 10-year action goals. The draft Phase 2 Plan was also posted on the DNR's website and comments were invited via e-mail and an online survey. A press release went out 3 weeks in advance of the meeting to 21,024 recipients of the GovDelivery system, including 45 stakeholders associated with the park. A total of 67 people attended the virtual public meeting and provided comments on campground improvements, road repair, pump-out station expansion, river access and shooting range improvements. Full public input data and comments are provided in Appendix B.

2. Overview of Phase 1 General Management Plan

The Phase 1 GMP for Algonac State Park was approved on June 7, 2005. The following information summarizes the significance statements and management zones for the park, which were defined in the Phase 1 GMP.

2.1. Significance Statements

Algonac State Park was determined to be significant for the following reasons. These statements contain minor corrections made by the Phase 2 planning team without changing the original meaning or intent.

- Algonac State Park, located on the international border with Canada, is contained within the St. Clair Flats, one of the largest freshwater delta systems in the world.
- The park is ecologically important in that it contains remnant and restored lakeplain prairies and oak openings, which are some of the rarest natural communities, with unique biological diversity, in Michigan, the nation, and globally.
- Algonac State Park provides year-round recreational opportunities along the St. Clair River scenic corridor, with a strong connection to the viewing of the St. Clair River and Great Lakes shipping/boating activities.
- Algonac State Park contains culturally sensitive resources related to Indigenous and European occupation and activities.
- Algonac State Park offers excellent opportunities for research, education and interpretation in the areas of lakeplain prairies, oak openings and Great Lakes marshes, Great Lakes shipping, boating, fishing, and other cultural elements.

In addition to these statements, the team also determined the park to be significant for the following reasons:

- Many anglers and waterfowl hunters use the park for overnight accommodations for events and to access the river/lake.
- The St. Clair River and St. Clair Flats is a primary migratory bird flyway. Diving ducks are also prevalent in St. Clair and Macomb counties bringing attention to birding at the park. Birding presents an opportunity for education and interpretation.

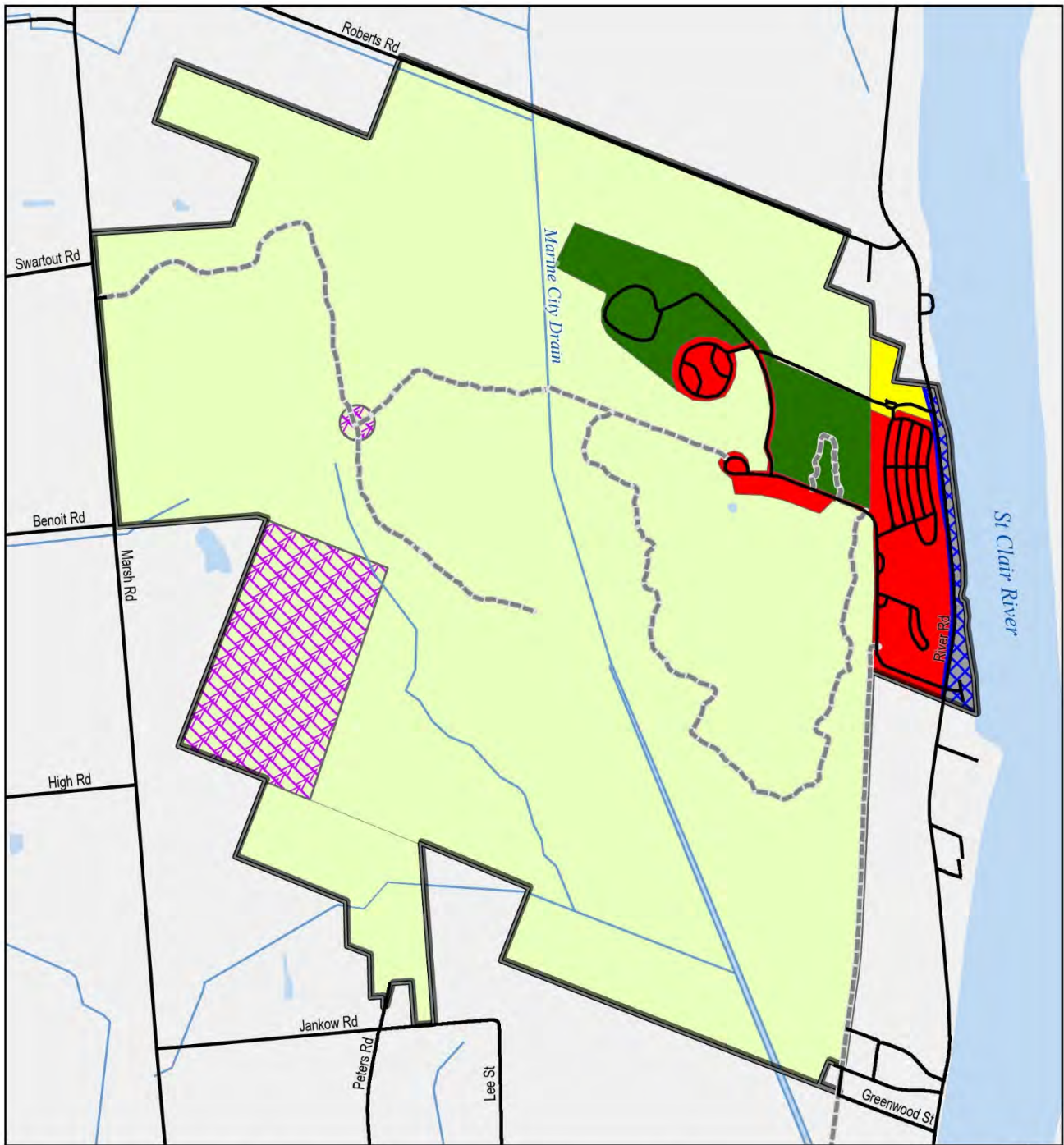


Visitors learning about the Blazing Star Prairie

2.2. Management Zones

The Phase 2 GMP planning team reviewed the zoning map developed in the Phase 1 Plan and determined no significant changes were necessary. Although, through the planning process, zoning for the recently acquired 51.83 acres on the south end of the park is recommended to be Primitive to be consistent with the adjacent zoning and natural habitat found in this area of the park. A condensed review of the management zones along with the zoning map follows. A thorough description of each management zone can be found in the Phase 1 GMP.

- Primitive Zone comprises most of the park at 1,222 acres, or 80% of the park. This zone consists of the designated Natural Area and lakeplain ecosystems. This area allows dispersed and low-frequency use for low-impact recreational purposes (foot traffic only).
- Ecological Sensitive Overlay Zone exists as a subset of the Primitive Zone consisting of 90 acres. This seasonal designation protects two heron rookeries. The zoning prescription is only in effect when the rookeries are actively being used. At all other times, the zone reverts to the underlying Primitive Zone.
- Natural Resource Recreation Zone comprises 62 acres, or 4%, of the park and permits recreation with moderate to high density of use conducted in a natural setting. The Natural Resource Recreation Zone exists in this park as a buffer between the active Developed Recreation Zone and the Primitive Zone.
- Scenic Zone recognizes the viewing opportunities of the St. Clair River from the shoreline frontage of the park. The acreage of this zone totals approximately 123 acres (8%) of the park.
- Developed Recreation Zone comprises 67 acres (4%) and allows recreation with high density of use conducted in areas not designated for natural resource significance. In this zone, recreation dominates with natural resource attributes enhanced where appropriate. This zone incorporates both modern campgrounds, the archery and shooting ranges and day use areas.
- Administrative (Visitor) Services Zone comprises 4 acres and encompasses the developed areas required for program administration and operations. The current administrative services, including maintenance facilities and the park office, are located within this zone.



MICHIGAN DEPARTMENT OF NATURAL RESOURCES



Algonac State Park - Management Zones

- State Park Boundary
- Road
- Waterbody
- Non-Motorized Trail

- Base Zones**
- Primitive
 - Scenic
 - Natural Resource Recreation
 - Developed Recreation

- Administrative Services (Visitor Services)
- Overlays**
- Ecologically Sensitive Overlay (Seasonal)



2.3. Changes Since Previously Approved Phase 1 and 2 General Management Plans

Annual Visitation

The number of campers per year has steadily increased from 53,143 in 2014 to 89,924 in 2019. While numbers in 2020 were down to 62,120 due to the COVID-19 pandemic shut-down, park visitation rebounded in 2021.

Lake Levels

Since the Phase 1 GMP was approved, Algonac State Park has experienced roughly a 7-foot swing in water levels, from a record low in 2013 to record highs in 2020. Both extremes come with their own challenges. Currently, the riverside parking lot and campsites experience frequent flooding due to high water and above average storm events. The planning team recognized the need to accommodate for large water level fluctuations when planning for park improvements.

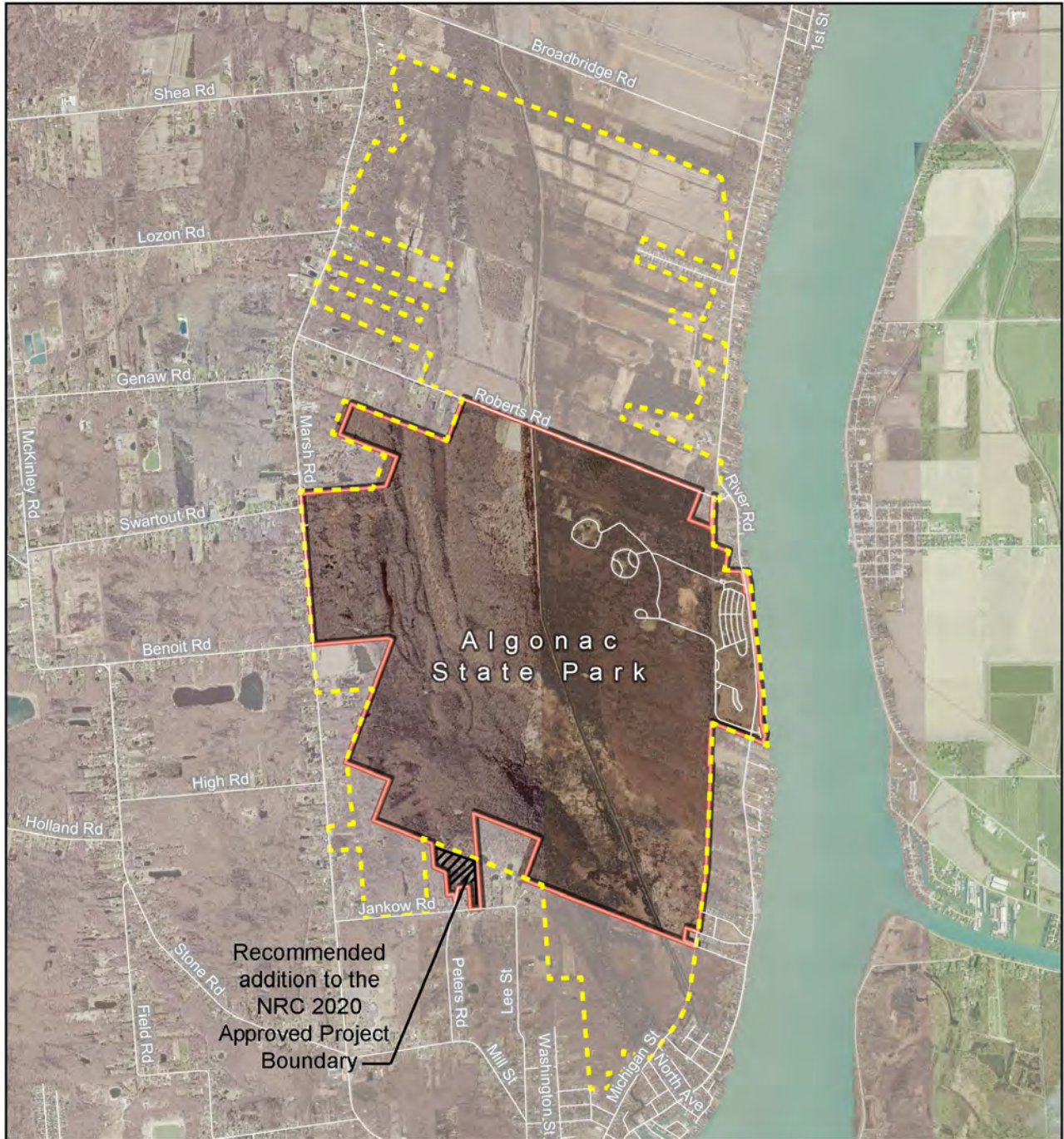
Infrastructure Improvements

The following projects have been completed since the original Phase 1 and Phase 2 GMP's were approved:

- 1) South toilet/shower building replaced at Riverfront campground (2005)
- 2) Electrical system upgraded to 50 amp service at 110 sites (2005)
- 3) Water system upgraded in Riverfront campground (2005)
- 4) New windows in headquarters (2010)
- 5) New archery range targets (2011)
- 6) Headquarters remodeled (2014)
- 7) Fence replacement along M-29 (2015)
- 8) Campground office remodeled (2016)
- 9) 2 ADA campsites created in Riverfront campground (2017)
- 10) Accessibility improvements to trap range including concrete access to shooting stations and installation of shelter and tables. (2017)
- 11) 4 lane handgun range added (2017)
- 12) Electrical system upgraded at Wagon Wheel campground (2018)
- 13) ADA walkways constructed in Riverside campground (2019)




*Project Boundary

A project boundary is a geographic area reflecting the future desired park boundary. The DNR has an interest in acquiring property within this boundary on a willing seller/ willing buyer basis in order to better align the park with the DNR mission. The planning team reviewed the 2020 project boundary, approved by the Natural Resources Commission, along with the recommended project boundary from the Phase 1 GMP. The 2020 project boundary includes a significantly large area to the north of the park. This land contains undeveloped lakeplain prairie valuable for protection. It was concluded that the 2020 project boundary for the park is still relevant with a slight modification to include the 52-acre addition on the south end of the park that was purchased in 2016. In addition, the park supports protecting adjacent undeveloped land and will work with adjacent landowners should they wish to sell in the future.



MICHIGAN DEPARTMENT OF NATURAL RESOURCES
Algonac State Park - Park Boundary



-  State Park Boundary
-  NRC 2020 Approved Project Boundary*
-  Road



2.4. Supporting Documentation Updates

Threatened and Endangered Species

The following is the list of rare species and important natural communities found at the park according to the Michigan Natural Features Inventory.

Animals

Common Name	Scientific Name	State Status
Blazing star borer	<i>Papaipema beeriana</i>	State special concern
Cerulean warbler	<i>Dendroica cerulea</i>	State special concern
Channel darter	<i>Percina copelandi</i>	State endangered
Culver's-root borer	<i>Papaipema sciata</i>	State special concern
Eastern fox snake	<i>Elaphe vulpina gloydi</i>	State threatened
Great blue heron rookery		
Leafhopper	<i>Flexamia reflexa</i>	State special concern
Northern madtom	<i>Noturus stigmosus</i>	State endangered
Lake Sturgeon	<i>Acipenser fulvescens</i>	State threatened
Mooneye	<i>Hiodon tergisus</i>	State threatened

Plants

Clinton's bulrush	<i>Scirpus clintonii</i>	State special concern
Dwarf-bulrush	<i>Hemicarpha micrantha</i>	State special concern
Few-flowered nut-rush	<i>Scleria pauciflora</i>	State endangered
Gattinger's gerardia	<i>Agalinis gattingeri</i>	State endangered
Gentian-leaved St. John's-wort	<i>Hypericum gentianoides</i>	State special concern
Northern appressed clubmoss	<i>Lycopodiella subapressa</i>	State special concern
Purple milkweed	<i>Asclepias purpurascens</i>	State special concern
Seedbox	<i>Ludwigia alternifolia</i>	State special concern
Short-fruited rush	<i>Juncus brachycarpus</i>	State threatened
Skinner's gerardia	<i>Agalinis skinneriana</i>	State endangered
Sullivan's milkweed	<i>Asclepias sullivantii</i>	State threatened
Tall nut-rush	<i>Scleria triglomerata</i>	State special concern
Three-awned grass	<i>Aristida longespica</i>	State threatened

Natural Community Elements Global Rank

Lakeplain Oak Openings	G2/S1
Lakeplain Wet-mesic Prairie	G2/S2

Natural Areas

The designated Natural Area found at the park has been mapped based on the administrative rule approved in 2007 defining 1,244 acres of designated Natural Area land. A revised map is included in Appendix E of this plan.

Hunting Safety Zones

A hunting safety zone map for Algonac State Park has been added and included in Appendix E of this plan.

Legal Mandates

Legal mandates that impact Algonac State Park have been updated and are included in Appendix A of this plan for reference.

Mineral Ownership

According to the DNR's Real Estate office, 94.5% of Algonac State Park includes mineral rights owned by the state. Some parcels have insufficient data associated with mineral rights which may indicate that the state owns the mineral rights of these parcels as well. See Appendix E for a map of mineral rights.

Funding Sources

An updated funding source map has been produced, depicting the funding sources used to acquire property for the park and is included in Appendix E of this plan. A description of these funding sources can be found in the Phase 1 GMP.

3. 10–Year Action Goals

The action goals proposed for Algonac State Park have been developed by the planning team in response to stakeholder and public input and in context of the core values and guiding resources discussed in the Phase 1 GMP. The action goals for Algonac State Park generally focus on upgrading existing infrastructure while maintaining a focus on protecting natural resource-based recreation experiences. Priorities identified in this plan include upgrading and improving existing infrastructure within the camping and day use areas, improving accessibility, and improving recreation experiences. These goals are supported by the recommendations of all of the major planning efforts guiding recreation in Michigan, including the Michigan Statewide Comprehensive Outdoor Recreation Plan (SCORP).

The planning team has developed 10-year action goals that it believes are necessary to guide management and development within the designated management zones in order to achieve the desired user experience. Action goals are categorized under two types: Management and Operations or as Infrastructure and Development, which is further broken down to small projects and capital outlay projects. These categories align with the PRD Strategic Plan as well as the annual Capital Outlay funding process. Action goals are recommended to address the following criteria:

- Natural resources
- Historic/cultural resources
- Recreation opportunities
- Education/interpretation opportunities
- Management focus
- Development

A separate Natural Resource Stewardship Plan has been developed that identifies conservation targets, goals and threats to those conservation targets for the park. The Stewardship Plan also identifies and defines strategies to reach the goals for Algonac State Park.

Management plans are based on known needs, funding realities and sound investment policies, but do not guarantee future PRD funding to achieve the actions identified. PRD will seek internal funding, alternative funding sources, partnerships and other potential mechanisms for implementing the desired future conditions defined in this plan. On an annual basis, PRD districts determine priorities for project planning and project capital outlay. Each district’s top projects are then evaluated at a state-wide level for available funds.

As future improvements are evaluated, renewable energy, resiliency, sustainability, EV charging and efficiency will be considered. Specifically, at Algonac State park, opportunities may exist to incorporate solar energy on new buildings and EV charging stations in the parking lots.

The following 10-year action goals are categorized in terms of priority based on health, safety, and welfare, as well as ease of implementation (cost, ability to implement with own staff, partnerships, etc.). Priority Level 1 projects indicate those that should be addressed within the next 2 years. Priority Level 2 projects include those that should be addressed within 2-5 years. Priority Level 3 projects are desired, but can be tackled in the next 5-10 years, once funding has been identified. The “Program Input From” column identifies the project coordinators for each goal with a project lead identified in bold. Opinion of probable costs have been developed for each capital outlay action goal identified (see Appendix D) and these projects will be included in the statewide master project list.

MANAGEMENT & OPERATIONS			
Action Goal	Priority	Management Zone	Program Input From
<i>Control invasive species</i> within all lakeplain prairies, oak openings, and Great Lakes marsh ecosystems throughout the park; this will include prescriptions using an appropriate combination of mowing, cutting, herbicide, and fire annually over the next five years. <i>Focal species</i> are glossy buckthorn, <i>Phragmites</i> , and garlic mustard.	Ongoing	All	Stewardship Park Supervisor
Review all proposed earthwork activities for potential impact on historic/cultural resources	Ongoing	All	Stewardship Regional Planner Park Supervisor
Continue to complete and comply with annual safety inspections and plans	Ongoing	All	Park Supervisor
Review and update Wildfire Plan and Emergency Plan	Ongoing	All	Park Supervisor Stewardship Local Emergency Services

MANAGEMENT & OPERATIONS Continued			
Action Goal	Priority	Management Zone	Program Input From
Improve recycling efforts at the park as opportunities allow and provide education on green initiatives to park visitors	Ongoing	All	Park Supervisor Green Initiatives Team
Work to expand the park boundary within the 2020 project boundary as land becomes available	Ongoing	All	Land Liaison Park Supervisor
Continue monitoring state-listed insects and select flora within heavily managed units. Update status of all state-listed species. Include effort to find prairie fringed orchid and protect any population.	Ongoing	All	Stewardship
Conduct <i>prescribed fires</i> annually within lakeplain prairies, oak openings, and Great Lakes marsh ecosystems based on ecological need; an anticipated minimum of 836 acres (not counting repeated fire) will require burning over the next 5 years to maintain and restore these globally imperiled ecosystems and associated biodiversity.	Annually	Primitive, Natural Resource Recreation	Stewardship FRD District Supervisor Park Supervisor
Annually evaluate results of prescribed burns based on ecological objectives and prescribe subsequent fires appropriately.	Annually	Primitive Natural Resource Recreation	Stewardship
Conduct <i>forestry mowing</i> annually over the next five years to expand restoration of lakeplain oak openings to its full ecological extent. This will occur within Stewardship Management Units 2,7,10,11,13 and 14.	Annually	Primitive	Stewardship Park Supervisor
Provide effective programming at the park (specifically in relation to the natural areas) through the Explorer Guide Program and partnerships	1	All	Park Supervisor District Supervisor Explorer Program Coordinator
Develop fact sheet for staff and visitors to share Stewardship activities and how visitors can help protect the natural resources of the park	1	All	Stewardship Park Supervisor

MANAGEMENT & OPERATIONS Continued			
Action Goal	Priority	Management Zone	Program Input From
Seek ways to raise funds for non-critical infrastructure projects. (e.g. friends group, campaigns and local foundations)	1	All	Park Supervisor
Define expected trail conditions at park kiosks, contact stations and social media outlets	2	All	Park Supervisor
Explore the addition of a WiFi hotspot at the park for campers, potentially at the north toilet/shower building location	2	All	Park Supervisor
Determine an appropriate re-use of the north Riverfront Campground toilet/shower building site. (e.g. concessions area, seating area, etc.)	3	Developed Recreation	Park Supervisor Regional Planner

FRD – Forest Resources Division

INFRASTRUCTURE & DEVELOPMENT: CAPITAL OUTLAY			
Action Goal	Priority	Management Zone	Program Input From
Resurface, chip seal, reconstruct & repave roads and parking areas as needed throughout day-use area and campground, including drainage and stormwater improvements	1	All	Regional Planner Park Supervisor
Expand the sanitation station	1	Developed Recreation	Regional Planner Park Supervisor
Replace north Riverfront Campground toilet/shower building with full hook-up campsites	1	Developed Recreation	Regional Planner Park Supervisor
Replace/repair water distribution lines in the Wagon Wheel Campground	2	Developed Recreation	Regional Planner Park Supervisor
Replace or renovate day use toilet building	2	Developed Recreation	Regional Planner Park Supervisor
Improve barrier free ADA accessibility at day use area including connecting restrooms with parking lot, shelter and play areas	2	Developed Recreation	Regional Planner Park Supervisor

INFRASTRUCTURE & DEVELOPMENT: CAPITAL OUTLAY Continued			
Action Goal	Priority	Management Zone	Program Input From
Replace headquarters and shop facilities	3	Administrative Services	Regional Planner Park Supervisor
Install removable floating accessible canoe/kayak launch at river access site	3	Scenic	Regional Planner Park Supervisor
Install removable accessible fishing dock	3	Scenic	Regional Planner Park Supervisor Fisheries Biologist
Pave riverside parking area and improve accessibility	3	Scenic	Regional Planner Park Supervisor
Install second shelter at day use area	3	Developed Recreation	Regional Planner Park Supervisor
Install cold storage building at park headquarters	3	Administrative Service	Regional Planner Park Supervisor

ADA - Americans With Disabilities Act

INFRASTRUCTURE & DEVELOPMENT: SMALL PROJECTS			
Action Goal	Priority	Management Zone	Program Input From
Add two barrier free ADA sites at riverside campground	1	Developed Recreation	Regional Planner Park Supervisor
Replace roof at park headquarters	1	Administrative Services	Park Supervisor District Supervisor
Improve accessibility at archery range	2	Developed Recreation	Regional Planner Park Supervisor
Expand park headquarters breakroom	2	Administrative Services	Park Supervisor
Install accessible hunting blind. (potentially off Bridge to Bay Trail)	2	Natural Resources Recreation	Regional Planner Park Supervisor Wildlife Biologist
Improve Peters Road parking area for hunting access	3	Primitive	Regional Planner Park Supervisor Stewardship

ADA - Americans with Disabilities Act

PARTNER PROJECTS			
Action Goal	Priority	Management Zone	Program Input From
Continue to support appropriate event opportunities at day use area as partners propose	Ongoing	Developed Recreation	Park Supervisor Local partners
Seek targeted non-profit organizations to help fund and implement specific partnership projects	Ongoing	All	Park Supervisor Resource Development Specialist
Seek grant funding to add staff at shooting ranges	1	Developed Recreation	Park Supervisor District Supervisor MOD
Install new playground facility	2	Developed Recreation	Park Supervisor Regional Planner Local Partners
Install bike repair station on Bridge to Bay Trail	3	Developed Recreation	Park Supervisor Local partners

MOD - Marketing and Outreach Division



Natural area in bloom

4. Implementation Strategy

This chapter of the GMP provides guidance for implementation of the action goals and maintaining the plan so it remains relevant in the long term. These guidelines will also help the park align the action goals with park, district and statewide annual funding processes and annual tasks outlined in the PRD's Strategic Plan or other planning documents. Although the implementation of the GMP will require commitment from staff at every level, it will be the primary responsibility of the Unit Supervisor/Manager to oversee plan implementation.

A long-range plan such as this must maintain a degree of flexibility in order to be responsive to changing circumstances or opportunities that cannot be foreseen. The planning team recognizes that some goals may be accomplished in a short time frame, while others may carry over through multiple years. It will be important to track progress so that the plan remains a relevant park management tool. The GMP will be reviewed every five years to ensure it remains viable.

All proposed changes in the park should be reviewed to ensure they are in compliance with the approved Management Zones.

4.1. Implementation Toolbox

The following is a list of items to consider when reviewing and prioritizing the implementation of action goals identified in the GMP.

Coordination/ Communication

- Meet regularly with the Regional Field Planner and District Supervisor to coordinate and prioritize large capital projects for capital outlay requests.
- Maintain an open dialogue with local partners and stakeholders to coordinate community-related projects as identified in the action goals.
- Follow-up regularly on progress for action goals that are not the primary responsibility of the Unit Supervisor/Manager with the responsible program position.

Funding

- Estimated costs for capital outlay projects are included in the Opinion of Probable costs section. These costs will be refined and adjusted by the Regional Field Planner as designs and studies are completed.
- Identify potential funding sources for each project/task. Liaise with PRD grants coordinator as appropriate.
- Align potential funding sources with the annual capital outlay funding requests.
- Request District Small Project funding through the District Supervisor for small projects identified in the 10-year action goals.

Scheduling

- Further prioritize projects based on need, funding, staffing and other constraints and opportunities.
- Incorporate project/task assignments into annual staff performance objectives

4.2. Documentation of Changes

The Unit Supervisor/Manager should keep a record of any major changes to the park since approval of the GMP and note potential updates that may be required in the future. Documenting these changes will assist in the 5-year plan review or when the GMP is updated. Changes may include:

- New user requests or conflicts
- Emerging recreation, funding or partnership opportunities
- Changes in land management
- Land transactions or changes to the Approved Project Boundary
- Major infrastructure projects or removal of structures

Changes may be documented by marking up the park's copy of the GMP or maintaining a log that is kept with the GMP. In reviewing the action goals for changes, document goals that may become irrelevant or are no longer viable, as well as proposed new action goals, including justification.

The park zoning is intended to be a long-term document. Changes will only be considered with adequate justification and are subject to a formal review and approval process.

4.3. Documentation of Accomplishments

As action goals are completed, the Unit Supervisor/Manager should mark them as such in the park's copy of the GMP, including the completion date. This will also help to maintain a log of accomplishments for district and division-wide reporting purposes, including PRD's strategic plan.

4.4. Five-year Review Process

General management plans are reviewed every five years from the date of approval of either the Phase 2 plan or the complete GMP. The planning team for the 5-year review is made up of the Park Management Plan Administrator, Unit Supervisor/Manager, Regional Field Planner and District Supervisor, with other team members included as may be necessary. A 5-Year Review Form will be used to record all changes to the plan within the past 5 years. Upon reviewing the GMP and the documented changes, the planning team will determine whether the changes warrant a complete update of the plan.

If there are no major changes required in either the zoning or the action goals, the planning team will complete the 5-Year Review Form and attach it as a supplement to the existing GMP. If zoning changes are needed, the GMP will be revised or updated following the established planning process led by the Park Management Plan Administrator. If changes to the action goals only are required, the Phase 2 GMP planning process will be implemented.

APPENDIX A – LEGAL MANDATES UPDATE

For all park general management plans, legal mandates are identified that serve to further guide the development of the general management plan and subsequent action plans. For our planning purposes, the term “Legal Mandates” refers not only to federal and state law, but also the administrative tools of “Policy” and “Directive” of the Natural Resource Commission, the Department, and the Parks & Recreation Division. Examples include Orders of the Director, Park and Recreation Areas State Land Rules and all other laws, commission orders, and rules or directives that apply to the park.

Legal Mandates were listed in the phase 1 plan. However, due to omissions and updates, a complete updated list of legal mandates impacting Algonac State Park follows.

FEDERAL STATUTE

ENDANGERED SPECIES ACT, 1973	
This Act authorizes the determination and listing of species as endangered and threatened, and prohibits unauthorized taking, possession, sale and transport of endangered species	
BALD AND GOLDEN EAGLE PROTECTION ACT, 1940 AND AMENDMENTS	
This Act prohibits anyone, without a permit issued by the Secretary of the Interior, from "taking" bald eagles, including their parts, nests, or eggs. The Act defines "take" as "pursue, shoot, shoot at, poison, wound, kill, capture, trap, collect, molest or disturb." “Disturb” includes actions that may result in injury to the eagle, a decrease in its productivity or nest abandonment.	
NATIONAL HISTORIC PRESERVATION ACT, 1966 AS AMENDED	
This is the primary federal law governing the preservation of cultural and historic resources in the United States. The law establishes a national preservation program and a system of procedural protections which encourage the identification and protection of cultural and historic resources of national, state, tribal and local significance.	

STATE STATUTE

NATURAL RESOURCES AND ENVIRONMENTAL PROTECTION ACT (NREPA) AND AMENDMENTS	
PA 451 of 1994, Part 5	Gives the DNR authority to make rules to support its mission. This includes State Land Rules, Land Use Orders, Wildlife Conservation Orders, Fisheries Orders and Watercraft Control.

PA 451 of 1994, Part 31 Water Resources Protection	Provides authority to EGLE to require a permit for any occupation, construction, filling, or grade change within the 100-year floodplain of a river, stream, drain, or inland lake.
PA 451 of 1994, Part 301 Inland Lakes and Streams	Requires a permit from the state (EGLE) to undertake certain activities relating to inland lakes and streams, such as dredging, fill, marinas, structures, alteration of flow, etc.
PA 451 of 1994, Part 303 Wetlands Protection	Requires a permit from the state (EGLE) to undertake certain activities in regulated wetlands, such as, dredging, fill, construction or drainage.
PA 451 of 1994, Part 351 Wilderness and Natural Areas	Establishes designated natural areas, wild areas and wilderness areas. Identifies activities that cannot occur on on state land within a designated wilderness area, wild area or natural area.
PA 451 of 1994, Part 419 Hunting Area Control	Section 324.41901 establishes the powers of the Department to establish safety zones for hunting.
PA 451 of 1994, Part 741 State Park System	The department shall create, maintain, operate, promote, and make available for public use and enjoyment a system of state parks to preserve and protect Michigan's significant natural resources and areas of natural beauty or historic significance, to provide open space for public recreation, and to provide an opportunity to understand Michigan's natural resources and the need to protect and manage those resources.
PA 451 of 1994, Part 325 Great Lakes Submerged Bottomlands	A permit is required for all filling, dredging, and placement of permanent structures (i.e., docks, piers, pilings, etc.) below the "ordinary high water mark" and on all upland channels extending landward of the "ordinary high water mark" of the Great Lakes.
PA 35 of 2010, Part 741 Recreation Passport	This act amended the Michigan Motor Vehicle Code to provide for a State Park and State-operated public boating access site "Recreation Passport" that a Michigan resident may obtain by paying an additional fee when registering a motor vehicle.
PA 451 of 1994, Part 761 Aboriginal Records and Antiquities	The state reserves the exclusive right and privilege to all aboriginal records and other antiquities including those found on the bottomlands of the Great Lakes.

PUBLIC HEALTH CODE	
PA 368 of 1978, Part 125, Campgrounds, Swimming Areas and Swimmers' Itch	Established to protect and promote the public health by establishing health code requirements and regulations that all public (including DNR) and private campgrounds must meet. Includes permitting, licensing, inspections and rules regarding sanitation, safety standards and public health. Also covers testing and evaluating quality of water at bathing beaches, safety and rescue equipment.

ORDERS

The following Orders apply to Algonac State Park.

Land Use Orders of the Director

5.10 Shooting ranges at state parks and recreation areas, designation by director prohibited conduct at certain ranges.

Order 5.10 (1) The following are designated shooting ranges:

- (a) Algonac SP shooting range, St. Clair county

5.12 Certain state parks and recreation areas, requirements for use, certain conduct prohibited.

Order 5.12 The following conduct shall apply to use of Michigan SPs and RAs:

- (20) Algonac SP campground, prohibited conduct. A person shall not place or allow a recreational camping unit under their control to be positioned horizontal to the park's roadways in the riverfront campground. The tongue of a trailer or front or rear of a self-propelled camping unit shall face the park's roadway, and all camping units must be parked on pads where they exist.

5.16a Entry, use and occupancy of certain state parks, recreation areas and scenic sites, prohibited conduct.

Order 5.16a (1) A person shall not do any of the following:

- (a) Enter any of the following state-owned lands with a motor vehicle unless a valid Michigan recreation passport has been purchased and affixed to the vehicle:

- (2) Algonac SP, St. Clair County.

Wildlife Conservation Orders

Wildlife is owned by all the people of the state of Michigan, and protection is administered and managed by the Michigan DNR. Hunting and trapping regulations including methods of take, bag limits, license

quotas, and season dates are established by the Natural Resources Commission (NRC) and are described in the Wildlife Conservation Orders.

7.1 Hunting or trapping in state parks or game refuges; designating where permissible; permits; hunting or trapping in state recreation areas.

Sec. 7.1 (1) Except as otherwise provided in this chapter or by permit issued by the director, no person shall trap or hunt with firearms or dogs or in any other manner in any state park, state game refuge, or other lands under the control of and dedicated by the department as a game refuge or wildlife sanctuary.

(2) Except as otherwise provided in this chapter, state recreation areas shall be open to hunting and trapping during established seasons.

7.28 Algonac state park, hunting and trapping allowed; exception; posting required.

Sec. 7.28 Hunting and trapping shall be allowed during the established seasons on all state-owned lands in the dedicated boundary of Algonac state park except for all state-owned lands in the dedicated park boundary lying east of the right-of-way of the Detroit and river St. Clair railroad, also known as the rapid railway, except within the Wagon Wheel campground area from May 1 through October 31.

Natural Resource Commission (NRC) Dedicated Natural Areas:

(By authority conferred on the director of the department of natural resources by 1994 PA 451, MCL 324.35103 and Executive Reorganization Order No. 1991-22, MCL 299.13)

R 322.73.1 Algonac state park natural area.

Rule 1. The following described area is dedicated as a natural area under the designation of the Algonac Prairie and Savanna Natural Area: a parcel of land located in fractional Section 27 and in Private Claims ("PC") 188, 200, 245, and 318; T3N, R16E (Cottrellville Township), commencing at the SW corner of said fractional Section 27; thence Easterly 33 ft., more or less ("m/l") along the South line of said Section to the East right-of-way ("ROW") line of Marsh Road for the Point of Beginning (POB); thence continuing Easterly along said South section line to a point on the West line of said PC 200, said point being 2.89 chains (190.74 ft.) Southwesterly along said West line from the NW corner of said PC 200 (General Land Office Plat of Original Survey, U. S. Surveyor General's Office, 02/20/1818); thence Southwesterly along said West line of said PC 200 to the North line of the South ½ of the South ½ of said PC 200; thence Southeasterly along said North line to the East line of the Westerly 80 acres of said South ½ of the South ½ of said PC 200; thence Southwesterly along said East line to the South line of said PC 200; thence Southeasterly along said South line to the West ROW line of the removed Detroit Interurban Railroad; thence Northerly along said West railroad ("RR") ROW line to a point being S12d14'W 263.88 ft. from the intersection of the extended centerline of South Parkway Street, Oak Grove Subdivision (recorded Saint Clair County Register of Deeds Office, Liber 18, Page 180), and said West RR ROW line; thence N64dW 216.67 ft.; thence N26dE 256.3 ft.; thence S64dE to said West RR ROW line; thence continuing Northerly along said West RR ROW line to the South ROW line of State Park Road, Algonac State Park, a point being 1138 ft., m/l, Southerly along the West RR ROW line from the South line of said PC 245; thence N68dW 356 ft., m/l, along the Southerly ROW line of said State Park Road; thence S47d47'W 195 ft., m/l; thence N70d24'W 466 ft., m/l; thence N88d41'W 430 ft., m/l; thence N30d05'W 1360 ft., m/l; thence N51d31'W 987 ft., m/l; thence N21d12'E 326 ft., m/l; thence N67d50'W 595 ft., m/l; thence

N25d40'E 583 ft., m/l, to the North line of said PC 245; thence S69dE 1325 ft., m/l, along said North line; thence S43d25'E 1035 ft., m/l; thence S20d43'E 179 ft., m/l; thence S67d07'E 1081 ft. m/l, to a point on said West RR ROW line being 61 ft., m/l, Northerly of the South line of said PC 245; thence continuing Northerly along said West RR ROW line to the South line of said PC 318; thence continuing Northerly along said West RR ROW line 328 ft., m/l; thence N65d05'W 453 ft., m/l; thence N24d55'E to the North line of said PC 318; thence Northwesterly along said North line to the East line of the Northwesterly 3460 ft. of said PC 318; thence Southwesterly along said East line to the South line of said PC 318, being also the North line of said PC 245; thence Northwesterly along said North line of said PC 245 to the NW corner of said PC; thence Southwesterly along the West line of said PC 245 to the SW corner of said PC; thence Southeasterly along said South line of said PC 245 to the NW corner of said PC 188; thence Southwesterly along the West line of said PC 188 to a point S87d06'E 1673.4 ft., m/l, from said East ROW line of Marsh Road; thence N87d06'W 1673.4 ft., m/l, to said East ROW line; thence Southerly along said East ROW line 616 ft., m/l, to a parking area; thence Easterly 65 ft., perpendicular to said East ROW line; thence Southerly 130 ft., parallel to said East ROW line; thence Westerly 65 ft., perpendicular to said East ROW line; thence continuing along said East ROW line of Marsh Road to the POB. Total of 1244 acres, m/l.

St. Clair River Fishing Regulations

The St. Clair River is a connecting waterway in the Great Lakes and is home to a highly diverse and unique fish community. As such, there are special fishing regulations which deviate from the statewide regulations. Fisheries Order 240.19 identifies a catch -and-immediate-release season and a harvest season for lake sturgeon on the St. Clair River. Fisheries Order 215.20 identifies exemptions for largemouth bass, smallmouth bass, walleye, northern pike, and muskellunge. The order identifies a reduced possession season for largemouth bass, smallmouth bass and muskellunge. The walleye possession limit is open the entire year and the daily possession limit is based on Michigan's share of the annual total allowable catch (TAC) for walleye. The TAC is reported in March of each year by the Lake Erie Committee, which is under the aegis of the Great Lakes Fishery Commission. Northern pike possession season is identified as open for the entire year with daily possession limit of five fish.

APPENDIX B – STAKEHOLDER AND PUBLIC INPUT SUMMARY

Over the duration of the Phase 2 General Management Plan development process, the Planning Team ensured a variety of opportunities for stakeholder and public input and feedback.

Stakeholder Meeting

A stakeholder meeting was held on June 24, 2021 in a virtual format using Microsoft TEAMS, to guide the phase 2 general management plan for Algonac State Park. Participants were invited to provide their input, identifying strengths, challenges and opportunities related to the park. A total of 13 participants represented government, business and tourism, and non-profit organizations from around the region. The meeting began with a short presentation of the phase 1 general management plan that was completed in 2005 and a review of the planning process for this phase 2 plan. Input gathered at the meeting is listed below:

STRENGTHS

Location

- Location, location, location!
- Freighter viewing
- Fishing in local area
- Off the “beaten path”
- Proximity to downtown amenities
- Proximity to river
- Easy access
- River access
- Well located for nature watchers – bird watching in St Johns Marsh, fishing in St. Clair River/ Lake St. Clair etc.
- Park provides accommodation for local events (such as fishing tournaments)

Recreation

- Paved trail through park – Bridge to Bay
- Access to awesome bike trail
- Trails
- Variety of activities
- Archery range, shotgun range, skeet shooting, handgun range (5)
- Popular camping spot
- Trails for geocaching
- Camping areas provide diversity of use (hiking, biking, bird watching, river/ship viewing etc.)
- Diversity of uses

Natural Resources

- Diversity of habitat
- Diversity of flora, fauna and habitats
- Water and nature areas (2)
- Natural area and prairie restoration efforts
- Rare ecosystems

Other

- Community support

CHALLENGES

Facilities/Amenities

- Until the Marine City Marina is built, the park has limited access by boaters
- I believe the park lacks an accessible kayak launch
- Roads in very poor condition (3)
- Bathhouse needs replacing
- Need for improved roads (pavement throughout day use area has potholes, cracking, etc. and needs improvements)
- Unpaved parking lot across the street dry/dusty or wet/muddy
- Although accessibility is generally not bad, it can always be improved with more recreational features offered. Trails, equipment, etc.
- Need Wifi and better cell service (3)
- Reenactment campground is underutilized
- Need better beach access
- Lack of shade on too many camping sites. (Many trees were cut down a few years ago due to ash borer problem).
- Limited attractions outside of the river; No good beach, dated playground equipment
- There's little 'flavor' to make campsites attractive once away from the water. Shade is part of this

Management/Maintenance

- Trash along the bike path needs to be picked up on a regular basis
- Recycling bin should be returned
- Invasive species control
- The flooding in the back of the park limits access for hikers, too
- Some parts of the park are getting overwhelmed by invasive plant species
- Highwater/flooding causes maintenance issues with the park – drainage
- Shooting ranges - unstaffed. Enforcement of hours becomes an issue
- Shooting Range so close to camping area: noisy & annoying
- Never see any park staff on-site

- Website easy to make reservations, but it's always booked. I have been told people book popular weeks and then cancel the dates they don't want at the last minute.
- Often see changes (management) in natural areas, but difficult to find out what is planned and purpose. Park staff does not know.
- Mosquitoes
- Ticks

OPPORTUNITIES

Facilities/Amenities

- Add stage or pavilion for music
- St. Clair County Parks has a mobile stage. Perhaps DNR could partner with them to bring events/music to the park.
- More events planned at the picnic area, like maybe a dog agility competition, craft show, tractor show, etc.
- More events in picnic area
- Add horseback riding trails or even a horse obstacle course, which doesn't have to be big. Those are popular on west side of state.
- Boardwalk at west side of bridge over the Marine City drain to allow access to west side trails during high water or rain events
- Dog park
- Update and expand playground structure
- Bicycle maintenance station
- Handicap accessible hunting
- Kayak launch which would tie into the Clay Park kayak launch
- More geocache sites
- Have a pavilion with outlets for park users to rent for events, like a family reunion or birthday party
- Add parking access from Jankow Road
- Add yurts or "covered wagons" as camping options.
- Tie Jankow Road access into trail system
- Kayak/Canoe livery?
- Pave lot across the street
- Birding trail
- Expand off season activity availability such as ski trails

Management/Maintenance

- Opportunity to partner with County Drain Commissioner for water management in low areas
- Is the DNR open to outside funding/donations for alternatives to burning for invasive species management?
- Partner with Wilson Foundation of SE MI for funding of further trails/recreational opportunities.

- The park did have guided hikes at one time highlighting the natural features of the park. It would be nice to reestablish those.
- Raised boardwalk(s) in some prairie areas prone to flooding would be great for access and education
- Geocachers are willing to help with cleanups and invasive species control if they are informed of a need.
- Have park staff basically informed about the habitat and management plans for when visitors ask questions.

Stakeholder Meeting Attendees	
Name	Stakeholder Affiliation
Kirsten Lyons	Friends of the St. Clair River
Geoff Donaldson	St. Clair County Planner
Angela Shand	Disability Network of the Thumb
Paulette Duhaime	U.S. Co-Chair St. Clair River Binational Public Advisory Council
Denise Gerstenberg	City of Algonac
Jim Felgenauer	Sturgeon for Tomorrow
Kay Smith	Michigan Butterfly Network and Audubon Society
Nancy Winzer	St. Clair County Parks and Recreation
Dennis Delore	St. Clair County Parks and Recreation
Josh Skrzypczak	Office of State Senator Lauwers
Bill Gratopp	St. Clair County Board of Commissioners
Stephen Fritz	Geocacher
Matt Pohl	St. Clair County Sheriff Dept.

Planning Team Attendees: Matt Lincoln (Park Planner/Land Liaison), Debbie Jensen (Management Plan Administrator), John Darling (Wildlife Biologist), Dennis Wilson (Unit Supervisor), Mike Terrell, (District Supervisor), John Terpstra (Regional Field Planner)

Virtual Public Input Meeting

A virtual public input meeting was held online via GoToWebinar application on January 20, 2022 at 6:00pm to review the draft Phase 2 General Management Plan and comment on the draft 10-year action goals. The Phase 2 Plan was also posted on the DNR's website and comments were invited via e-mail and an online survey. A press release went out 3 weeks in advance of the meeting to 21,024 recipients of the government-delivery system, including 30 associated with the park.

The press release for the meeting, analytics gathered at the meeting, a list of attendees, comments received, as well as survey results are provided below.

Jan 6, 2022

Contact: [Matt Lincoln](#), 517-881-3492

Help shape Algonac State Park management planning at Jan. 20 virtual meeting



The Michigan Department of Natural Resources will host a virtual public meeting 6-7 p.m. Thursday, Jan. 20, to gather public feedback on a new draft phase 2 general management plan for Algonac State Park in St. Clair County.

General management plans are used to define a long-range planning and management

strategy that protects a state park's resources while addressing recreation and education needs and opportunities.

The virtual meeting will include a review of the draft plan, proposed improvements and planning process, followed by an opportunity for people to share feedback and questions with DNR staff. [Advance registration is required.](#)

"Public input is a critical part of the planning process," said Debbie Jensen, park management plan administrator for the DNR Parks and Recreation Division. "We hope visitors, local community members and everyone interested in the future of this

park can take part in the public input phase."

Project website, post-meeting survey

Additional opportunities to provide feedback via a public input survey will be available immediately following the meeting. The virtual meeting will be recorded and posted online approximately one week after the event.

Visit Michigan.gov/Algonac to learn more about the state park and all associated general management planning resources, including the draft plan, meeting registration link, public survey, video recording of the meeting, and more.

Algonac State Park is best known for its views of freighters traveling along the St. Clair River. The 1,550-acre park boasts a half-mile of riverfront, shooting range, campgrounds, trails and a 1,200-plus-acre dedicated natural area. The park features rare habitats, including lake plain prairies and oak savannas that are home to 22 threatened, endangered or special-concern species of plants, birds and butterflies.

Additional information on the DNR's general management plan process is available at Michigan.gov/ParkManagementPlans.

For more information about the plan or meeting, contact Matt Lincoln, DNR Parks and Recreation Division land specialist, at LincolnM@Michigan.gov or 517-881-3492.

Note to editors: Accompanying photos are available below for download. Caption information follows.

- [Bird's eye view of Algonac State Park campground and St. Clair River](#)
- [Couple watching freighter on St. Clair River](#)

A total of 67 people attended the virtual meeting. A short presentation about the General Management Plan process was followed by a presentation of the Phase 1 GMP, approved in 2008 and the primary elements of the phase 2 draft plan. After the presentation, a question and answer session was facilitated through the GoToWebinar online application.

Virtual Public Meeting Attendees

Bob Henning	Franz Leppla	Jeff Sparling
John Pomper	Dennis Tipsword	Ralph Yaney
Vincent Saputo	Dawn Martin	Janet Schmit
Remi Darroch	Christopher Warbington	Laura Bissell
Kathy Harrison	Jason Galbraith	George Tesch
Roger Geistler	Janice Guckert	Shannen Lancaster
Jacqueline Claeys	Steve Gartland	Robin Carl
Gaye White	Russ Carl	Linda Harr

Cindy Babisz
 Dan Higbee
 Michelle Villerot
 Chris Powers
 George Peck
 Cheryl Pacler
 Judith Folk
 Karen Mielke
 Craig Surprenant
 Pamela Garlow
 Ronald Pursley
 James DeVeney
 Dana Vanderhoff
 Anthony Lewis
 Kathleen Kelly

Stephen Fritz
 Ryan Bator
 Cheryl Orourke
 Warren Yaney
 Jeffrey Zimnickas
 Ralph Mutrynowski
 Thomas Paletti
 Rick Smith
 Charles Hall
 Carolyn Gammicchia
 Donna Walter
 John Meze
 Hope Meyers
 Robin Wagner
 Candice Kerby 67

Pamela Wall
 Daniel Stazinski
 Laura Olszewski
 Melodie Provincher
 Joe in Abbate
 Frederick Curd
 Jim Felgenauer
 Kenneth Schlaefke
 H. Frank
 Sharon Zatirka
 John Konen
 Dick Kangas
 Charles Kutscher

DNR Employees Present

Dennis Wilson
 Mike Terrell
 Greg Norwood

Lori Burford
 Debbie Jensen
 Matt Lincoln

Cleyo Harris
 John Darling

Questions and Comments Collected During Webinar

Question Asked	Answer Given
Will more handicap spots be made available?	Answered at the meeting - We are proposing to add barrier free sites in the riverfront campground.
Can the ADA spots be paved and not next to bathrooms.	Answered at the meeting - We will strive to offer a variety of ADA spaces available throughout the campground.
How many full hook up sites will replace the north bathroom demolition?	Answered at the meeting - Not determined at this time, but we are preliminarily looking at 80-150 sites.
By removing a bathroom, you are limiting families with young children (with no bathroom in their unit) to stay close to the other bathroom.	The south bathroom is a newer, large facility that will continue to serve guests.
Will there be any improvement on the reservation system.	The contract with our current reservation system vendor has been renewed and is continuously working to improve.
When will the road improvements start and will it affect the camping	Answered at the meeting - We plan to do as much construction outside of the peak camping use season, however, it is expected to effect camping at some level.
Would it be possible to add recycling sooner rather than later?	Answered at the meeting - We are working to improve recycling, but it is proving to be costly and we are at the mercy of the waste removal companies and limited staffing.

Will the roads leading into the campground be fixed before summer?	We are still working on determining the cost of the project and lining up funding, so we do not yet have a schedule for the project.
2) When the bathroom is torn down, will the other bathroom still be available?	Answered at the meeting - Yes
Do you have a timeline for each improvement project	Answered at the meeting - each action goal has been assigned a priority number, however priorities are contingent upon available funding. 1 = 1-3 years, 2 = 3-5 years, 3 = 5-10 years.
Is there any plan to improve where we park our trailers/ vehicles on all sites. They need to be more level.	Answered at the meeting - efforts were made this year by adding gravel to the sites. A wet spring made the sites more unlevel.
Is it possible get more seating areas across the road? Is that area even part of the park?	Answered at the meeting - We often get requests to donate benches. We could add them to the area by the gravel parking lot, however, there isn't enough room north as the space between the road and the water is too thin.
Are you planning or have you bought property north of the park, North of Roberts Road	If the property becomes available, we are interested, however, it is often difficult to line up funding to make the purchase.
Will there be two bathroom buildings in the Riverside campground with this new plan?	2 bathrooms are not currently in the plan
what is the policy regarding electric bike use	Currently allowed only on the regional trail. For more information on ebikes may be accessed via the following link https://www.michigan.gov/dnr/0,4570,7-350-79119_79151_97779---,00.html
what is the timeline for the road repair/replacement? very dangerous in its current condition. hard to ride a bike, trip hazards when walking...	We are still working on determining the cost of the project and lining up funding, so we do not yet have a schedule for the project. However, it is our top priority.
Do you have to have a handicap sticker to camp on the ADA sites if they are empty but the park is full?	Answered at the meeting - A member of the party camping needs to be disabled to use the site. If it is available on the day of, then someone that is not disabled can use it.
You mentioned full hook up sites how many are proposed	Currently 80-150 in the preliminary plans, however, it is not final.
If you are going to full hookups, does it make sense to spend \$\$ to improve the dump station?	Answered at the meeting - Good question, however, we believe we still have the need to handle peak use on Sundays when wait times can get over 2 hours. We would like to eliminate the wait time all together.
We need a fish cleaning station. Any chance of that happening.	We have not received interest in the past so we do not have any plans at this time.
what type of playground equipment is planned for the campground?	The type of playground equipment has not yet been determined

There are some camping areas with NO trees. Is there a plan to add trees?	We've added trees in recent years, however they take time to grow.
Have you ever considered having a camp store on site?	Answered at the meeting - We have considered it, but we currently do not have room. We are looking at the potential of the north restroom site when that gets removed.
3) Mosquitoes can tell time. We normally only camp at ASP in the spring and fall because of the mosquitoes. We were there in June last year and at 9 PM each night the mosquitoes swarmed. Hard to have a campfire that way. What is the plan for getting rid of them? We used to camp in the back but not anymore because of the mosquitoes.	We currently have no plans or control of mosquitos at the park. It has been standard DNR practice not to control mosquitos.
Why could you not expand the Riverfront campground to the South into the recreation park area and make pull through 60 x 80 spots with full hook ups?	We haven't made any plans to expand the campground at this time, however with increased use, we may need to look at this in the future.
during inclement weather the bathrooms were locked..no shelter for campers. can they remain open or have a emergency shelter?	We will look into improving the policy for shelter from inclement weather.
any plans to improve the cross walks to the river?	Crosswalks are controlled by MDOT. Any improvements will need to be approved by MDOT.
Can the front row be expanded to the south of the South campground? With the increase in camping since the pandemic, it is almost impossible to get a site.	We haven't made any plans to expand the campground at this time, however with increased use, we may need to look at this in the future.
How about updated photos on reservation site?	Noted, thank you!
There are tricks that people do ... reserve a river front ... and then keep changing the dates further out ...	The cancellation policy was updated a few years ago to try to discourage this type of activity
What about leveling parking area on campsites?	Answered at the meeting - efforts were made this year by adding gravel to the sites. A wet spring made the sites more unlevel.
I know you spoke about the ADA improvements by the day use. Will that include a sidewalk from the day use out to the road?	The plan is to connect as many day use amenities as possible with sidewalks.
Do you have more detail regarding the specific ADA improvements that park staff/public would like to see at the archery areas?	We are planning to add ADA accessible routes from the parking lot to the range as well as targets.

This report is really terrific. Are other parks performing similar reports?	Yes. You can review them at www.michigan.gov/parkmanagementplans
Regarding dump station. Will it be expanded to handle Sunday checkout?	Answered at the meeting. - Expansion of the dump station is planned with the intention of reducing wait times at checkout.
Will the dump station have an 8 degree pitch?	Plans for the Dump Station have yet to be designed.
Will you be adding any cement pad sites to the North Riverfront section to allow for more use for ADA accommodations?	Additional ADA sites are planned
Based on feedback, may the shooting range be available only when staffed?	Hours of operation is not expected to change regardless of staffing levels.
For those of us that already have reservations, if the area is not available because of construction, will we get a refund/credit without the penalty since it's not our fault that we can't camp during that time?	Yes, although is unlikely that work would affect reservations already made
Is there a possibility to expand the river front camping area into the day use area?	We do not currently have any plans to expand the campground, however, use number trends indicate that we may have to address this in the future.
Will new roads be wider?	Not yet determined
Is it possible to add a boardwalk over the shoreline rocks for fishing area?	Ice flows on the river prevent a boardwalk from being developed, however, we are looking at the potential for seasonal floating fishing dock structures
Will tents still be able to camp in the full-hook up sites?	Yes
any improvement to the trail between both campgrounds? it floods a lot	The changing water levels on the trails present difficulties. We are planning to better inform the public of trail conditions at the trailheads
Is it possible to have an area to fill clean water tank not at the dump area?	We will take this into consideration when we redesign the park utilities
Is there a plan to improve cell service most calls go to the Canada cell provider?	We are looking to WiFi at the park, however cell service is beyond the park's control.
Are you going to make sure people park on the campsites and enforce that rule so they don't crowd the camper next to them?	Our staff is available at the park to address these issues
A store would be GREAT!	We currently do not have space for a store, however we are looking at the potential for possibly of a store where the north restroom is once full-hookup sites are developed

Can you touch more on the mention of the additional of wifi hotspot?	We would like to add a WiFi hotspot in the campground. Currently the only hot spot is at the headquarters building and it's not very reliable.
Was Emigration enforcement at campground?	Not to our knowledge
Right now there are not any riverfront sites available until the 6 month point ... July 20th ... this is hard to describe online ... on say Jan 24th there will STILL be no river front sites available. People just keep adding dates. Can we go out longer than 6 months?	The window for camping reservation is 6 months to the start of your stay, so if for example someone's stay begins on the 20th, they can book out until the 24th.
Can a basketball court be added?	With the existing critical infrastructure needs at the park, we currently do not have the funding, however, this would be a good Friends Group project.
What about a sidewalk from day use for ADA?	We have an action goal in the plan to address ADA connectivity in the day use area, which would include sidewalks
due to the popularity of this park has any consideration been given to making the group area into individual sites?	We haven't discussed this, but we will look into it.
Back to the pistol range. This facility is a high quality range almost on the order of Ortonville. Based on feedback, it seems to be unpopular among campers. Is there a possibility the range will be deactivated if not staffed?	There are no plans to deactivate the shooting range.
will the full hook up sites be 30 amp and 50 amp elec hook up?	Answered at the meeting - 50 amp
wi fi?	We would like to add a WiFi hotspot in the campground. Currently, the only hot spot is at the headquarters building and it's not very reliable.
who should we call if we are interested in raising funds for a playground?	Dennis Wilson, 810-765-5605
Is it possible to get a cell phone boost?	We are looking to WiFi at the park, however cell service is controlled by the cell companies and tower locations in the region.
Is it possible to get a cell phone boost for better cellular signal?	We are looking to WiFi at the park, however cell service is controlled by the cell companies and tower locations in the region.

Project Website

A webpage was maintained through the duration of the planning process and was updated with maps, meeting information and the draft plan. Contact information was provided for members of the public to submit comments or ask questions.

E-mailed/Mailed Comments

When and how will they be do will it mean shutting down the park or will it be done in phases I sure hope a little better planning will go into it not like Lakeport South restroom job what a total joke that was and still is.

When will Algonac State Park be adding full hook-up campsites? This would be a great way to bring more campers to this wonderful campground. We have been camping here for years and always enjoy our stay and the helpful employees at the park.

On page 19 there is a reference to improving the Peters Road parking area for hunting access. There is a small grassy area within the state park boundary that looks like it could be used to park at least a couple of vehicles. There are currently no parking signs located in that spot. I wondered if they were placed there by the state or possibly by one of the homeowners at the end of the street to discourage parking. They do not look like signs that would typically be used by the parks division. There is also a trailer at the end of the street blocking the access trail.

Unable to click on to the link shown. It did not do anything. I really enjoyed the webinar. Very informative. As a camper I appreciate what is being done to update many of the campgrounds throughout the state. I especially like the full hookups that are being done and to be done. We have a 41 foot 5th wheel and it is difficult to get into many camp spots. I assume the fact that units are getting bigger is being taken into consideration when campground renovation is being considered.

Thanks for all of your good work.

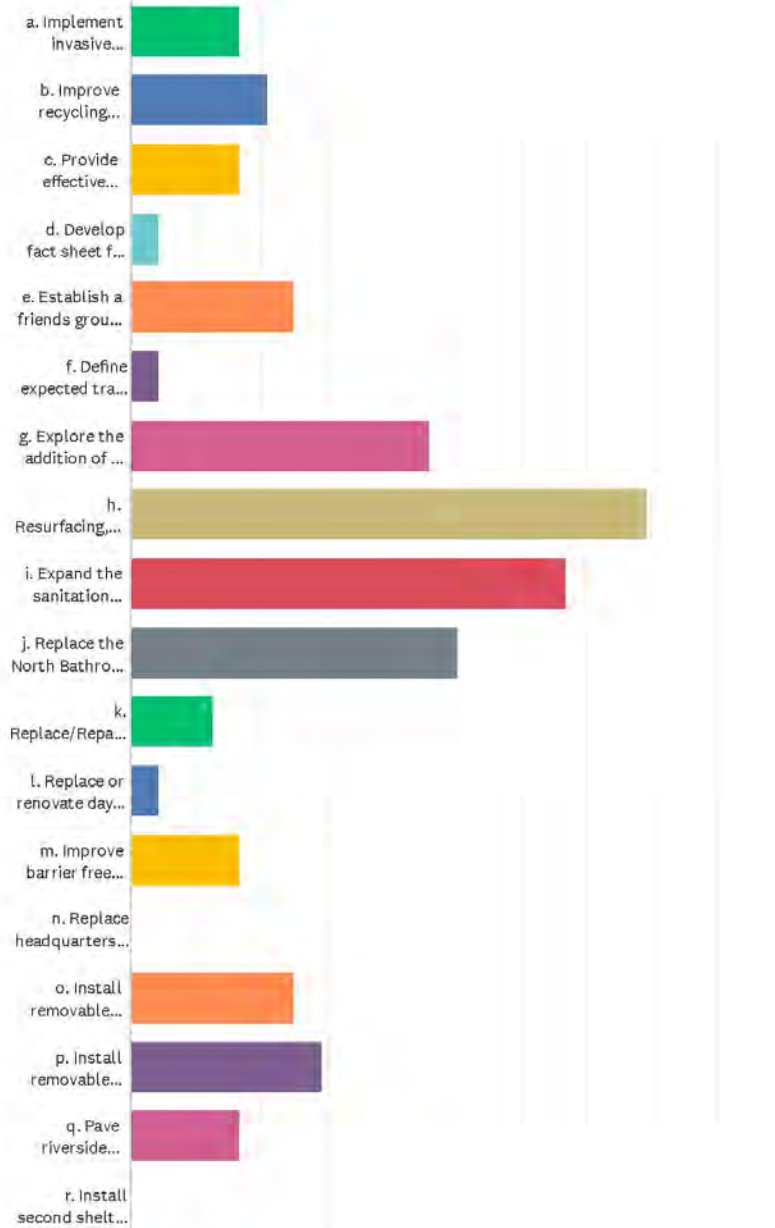
- 1) When will the road leading into the park and in the park be fixed?
- 2) additional items should be added for younger children and adults. (splash park fishing swimming pear.
- 3) Update the bathroom at the north end of the park.
- 4) add some sites with full hook up
- 5) make the pads on the sight more permanent and level (black top) many sights hold water

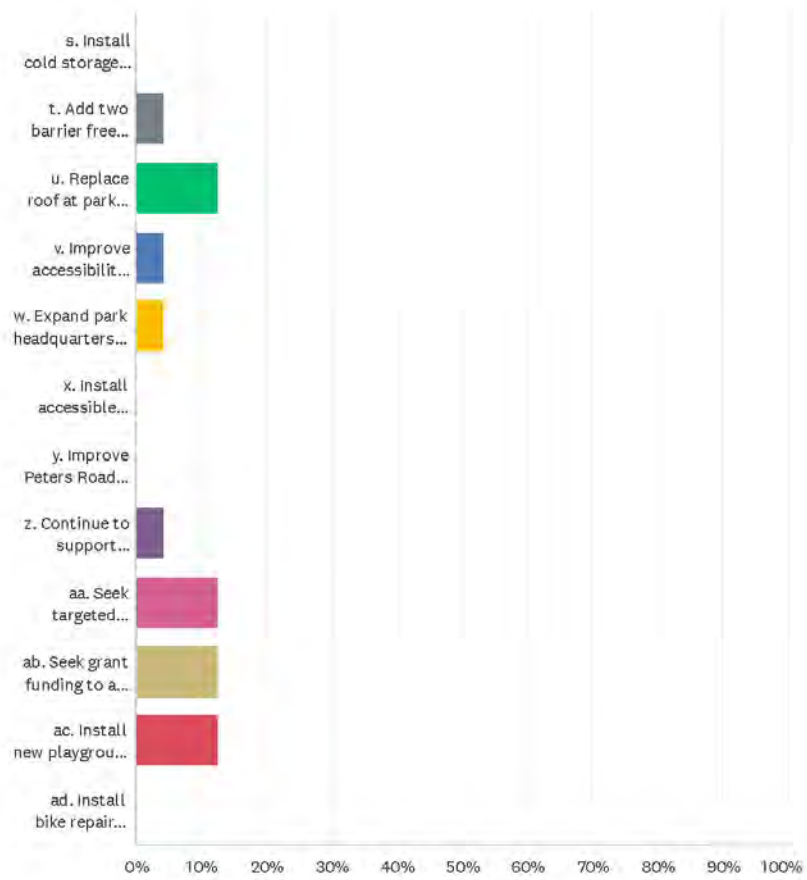
Post Meeting Survey

Meeting attendees were asked to review and help prioritize action goals by completing an online survey. The survey was also shared on the park website. 24 responses were collected. The total number of votes for each goal, and associated comments, are illustrated in the following survey results.

Q1 Prioritize your top five draft action goals Select the corresponding checkboxes for five of the following action goals:

Answered: 24 Skipped: 0





ANSWER CHOICES	RESPONSES	
a. Implement invasive species control, with a strong emphasis on early detection and rapid response	16.67%	4
b. Improve recycling efforts at the park as opportunities allow and provide education on green initiatives to park visitors	20.83%	5
c. Provide effective programming at the park (specifically in relation to the natural areas at the park) through the Explorer Guide Program and partnerships	16.67%	4
d. Develop fact sheet for staff and visitors to share Stewardship activities and how visitors can help protect the natural resources of the park	4.17%	1
e. Establish a friends group for the park	25.00%	6
f. Define expected trail conditions at park kiosks, contact stations and social media outlets	4.17%	1
g. Explore the addition of a WiFi hotspot at the park for campers, potentially at the north toilet/shower building location	45.83%	11
h. Resurfacing, chip seal, reconstruction & new paving of roads and parking areas as needed throughout day-use area and campground roads including drainage and stormwater improvements	79.17%	19
i. Expand the sanitation station	66.67%	16
j. Replace the North Bathroom with full hook-up campsites in the north section of the Riverfront Campground	50.00%	12
k. Replace/Repair water distribution lines in the Wagon Wheel Campground	12.50%	3
l. Replace or renovate day use toilet building	4.17%	1
m. Improve barrier free ADA accessibility at day use area including connecting restrooms with parking lot, shelter and play areas	16.67%	4
n. Replace headquarters and shop facilities	0.00%	0
o. Install removable floating accessible canoe/kayak launch at river access site.	25.00%	6
p. Install removable accessible fishing dock	29.17%	7
q. Pave riverside parking area and improve accessibility	16.67%	4
r. Install second shelter at day use area	0.00%	0
s. Install cold storage building at park headquarters	0.00%	0
t. Add two barrier free ADA sites at riverside campground	4.17%	1
u. Replace roof at park headquarters	12.50%	3
v. Improve accessibility at archery range	4.17%	1
w. Expand park headquarters breakroom	4.17%	1
x. Install accessible hunting blind. (potentially off Bridge to Bay Trail)	0.00%	0
y. Improve Peters Road parking area for hunting access	0.00%	0
z. Continue to support appropriate event opportunities at day use area as partners propose	4.17%	1
aa. Seek targeted non-profit organizations to help fund and implement specific partnership projects	12.50%	3
ab. Seek grant funding to add staff at shooting ranges	12.50%	3
ac. Install new playground facility	12.50%	3
ad. Install bike repair station on Bridge to Bay Trail	0.00%	0

Total Respondents: 24

Q2 Should any goals be added to the list? Suggest any action goal(s) you think should be added to the above, if any, and explain why.

Answered: 11 Skipped: 13

#	RESPONSES	DATE
1	this is minor compared to the above list, but some of the firepits in the riverfront need to be moved to make more sense when a trailer is parked on the site	1/25/2022 3:05 PM
2	A disc golf course would be awesome!!!	1/25/2022 10:35 AM
3	imoroving oak savanna trail so it doesnt flood over so much...needs board walks or to be built up...	1/25/2022 1:35 AM
4	Define & identify campsite boundaries better with new paint and markings. Upon check-in, be sure rangers STRESS that NO equipment is to be behind the electrical boxes. Very few individuals read the sign-in paperwork that currently lists this on the sheet.	1/23/2022 5:15 PM
5	Mosquito control. Like clockwork every night about 9:30 we get hit hard!	1/23/2022 5:08 PM
6	Improve and maintain hiking trails: roads should be one way traffic; add nature center; need more activities for kids	1/22/2022 10:35 AM
7	I think the goals suggested will make this park awesome. It is my hope that most of the above can be accomplished over time. Thanks for the invite to the meeting.	1/21/2022 7:38 PM
8	One suggestion I heard was to expand camping south into the day use area. Possibly this could be utilized for tenters or overflow? This would allow for more sites to view the river and the day use area is never as crowded as the camping area.	1/21/2022 3:58 PM
9	fix the roads	1/21/2022 10:07 AM
10	Make the park more pet friendly	1/21/2022 8:07 AM
11	I don't believe you should pave along the river. This reduces soil infiltration, please seek out the new sustainable format of 'paving' that allows water infiltration. Pavement is a thing of the past. If you want to help the river, then do anything but paving along it - thanks.	1/20/2022 6:28 PM

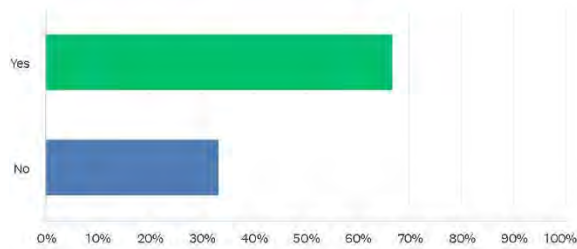
Q3 Should any goals be removed from the list? Suggest any action goal(s) you think should be removed from the above, if any, and explain why.

Answered: 7 Skipped: 17

#	RESPONSES	DATE
1	Removal of the North end bathrooms. That is currently an emergency shelter area, if I remember correctly. If that is removed where are people to go? Also, what about families with little kids who do not have access to on site bathrooms (trailers, campers). This will be a big inconvenienced for them.	1/31/2022 8:42 PM
2	j. Replace the North Bathroom with full hook-up campsites in the north section of the Riverfront Campground - Why would you do this? You'd add 3-4 sites at most and it's fairly long walk from the north camp to the other bathroom.	1/30/2022 10:35 AM
3	No	1/22/2022 10:35 AM
4	I think everything suggested is important. I believe looking for partners to help fund or provide services is a great idea. Looking for grants is also a great idea.	1/21/2022 7:38 PM
5	I think they have to be prioritized. It also would be nice to have an actual timeline for these changes.	1/21/2022 3:58 PM
6	With the number of campers on a regular basis, I think closing the North bathroom is a mistake. It should be updated instead.	1/21/2022 12:53 PM
7	shooting range staff	1/21/2022 10:07 AM

Q4 Did you attend the virtual public meeting (webinar) held on 20 January, 2022?

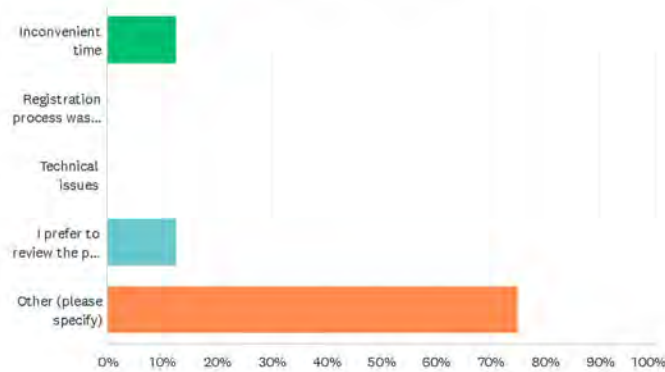
Answered: 24 Skipped: 0



ANSWER CHOICES	RESPONSES
Yes	66.67% 16
No	33.33% 8
TOTAL	24

Q5 Why didn't you attend the virtual public meeting?

Answered: 8 Skipped: 16

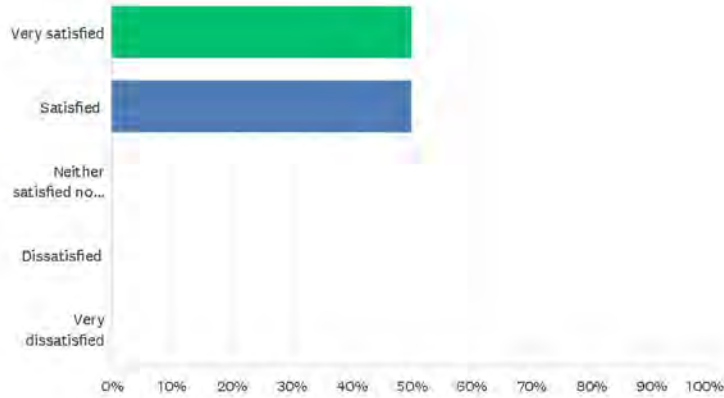


ANSWER CHOICES	RESPONSES
Inconvenient time	12.50% 1
Registration process was confusing	0.00% 0
Technical issues	0.00% 0
I prefer to review the plan in my own time	12.50% 1
Other (please specify)	75.00% 6
Total Respondents: 8	

#	OTHER (PLEASE SPECIFY)	DATE
1	Didn't know about it	1/25/2022 10:36 AM
2	was working, will watch the recording	1/23/2022 5:15 PM
3	We misread starting time ☹️	1/23/2022 5:09 PM
4	company showed up I could not leave them	1/21/2022 10:08 AM
5	Other last minute meeting	1/21/2022 8:59 AM
6	Up north....could not get access	1/21/2022 8:08 AM

Q6 Please rate the virtual public meeting by selecting one of the following options.

Answered: 16 Skipped: 8



ANSWER CHOICES	RESPONSES	
Very satisfied	50.00%	8
Satisfied	50.00%	8
Neither satisfied nor dissatisfied	0.00%	0
Dissatisfied	0.00%	0
Very dissatisfied	0.00%	0
TOTAL		16

Q7 Please explain the reason for your rating in the previous question.

Answered: 12 Skipped: 12

#	RESPONSES	DATE
1	Very well organized, great information, no technological issues, Great Job PRD staff!	2/2/2022 11:32 AM
2	Very informational and informative. Thank you for allowing the public to participate. Thank you for preserving and maintaining our Earth.	1/31/2022 8:45 PM
3	Organized agenda I did have trouble with being kicked off the session a few times, not sure if it was my ISP or what.	1/30/2022 10:36 AM
4	Like hearing from people with expertise in the subject matter discussed	1/29/2022 7:52 PM
5	It was a good meeting, but nothing new from what we already had been told by park rangers or camp hosts	1/25/2022 3:05 PM
6	Very organised, followed the agenda, informed answers to questions, A lot of thought, research and preparation went into this webinar. Very good job, congrats to the staff.	1/22/2022 3:29 PM
7	The Q and A part could have been better. Not all questions were answered and a lot of questions were not related to the goals	1/22/2022 10:37 AM
8	I thought it was informative and took the "huge" document of information previously sent and pared it down to be understood quickly. Thank you.	1/21/2022 7:39 PM
9	Speakers were easy to understand and slides were helpful.	1/21/2022 3:58 PM
10	Easy to navigate website. Audio was good quality. Topics/subject matter was appropriate and not too lengthy. I like that lots of questions were asked and answered. Good job.	1/21/2022 11:43 AM
11	Short, to the point explanation of what's happening and things that need to happen. Your main guy was knowledgeable and good in front of the camera.	1/20/2022 10:05 PM
12	I learned a lot about plans/ ideas for Algonac. The presenters were knowledgeable and honest when they didn't have an	1/20/2022 7:05 PM

APPENDIX C – ONSITE USE AND USER STUDY REPORT

By Charles M. Nelson and Kali Maisano
Department of Community Sustainability
Michigan State University
East Lansing, MI 48824

April 23, 2019

Introduction

As part of the management planning process for Algonac State Park (SP), an on-site study was conducted of a representative sample of park visitors to provide an overall estimate of mean user hours per vehicle in day use parking areas, assess local spending, ascertain the opinion of park users about the future management options and approaches and provide a profile of park visitors, both campers and day users. This on-site approach sampled users on systematically selected days and times across June – October of 2018. It used a windshield survey at the day use parking area and the same survey handed to a sample of up to 20 camping parties on sample days to ensure representation of the full range of park users.

Methods

The on-site study methodology and questionnaire were developed by the senior author in cooperation with the DNR Park Planner Debbie Jensen of the DNR Park and Recreation Division (PRD) staff. The questionnaire is found in Appendix B and is very similar to an instrument that was used in 2016 in the pilot project of integrating visitor surveys into the state park management planning process at Sleepy Hollow State Park, in 2017 at seven other Michigan State Parks and Recreation Areas (Indian Lake, Palms Book, Pontiac Lake, Proud Lake, Rifle River, Saugatuck Dunes and Warren Dunes) and in 2018 at five other Michigan State Parks (Holland, Clear Lake, Duck Lake, Fort Wilkins and Traverse City). A sampling calendar of 27 sample days was developed that proportionally allocated sampling days across June - October based on seasonal estimates of park use for summer and fall provided by the DNR (Appendices C and D). The survey commenced in the field at Algonac SP on June 26, 2018.

On a sample day, the survey administrator (a Michigan State Park employee) would begin sampling at one of the day use parking areas at the beginning of the designated sample period (9AM, Noon, 3PM or 6PM) per the sampling schedule. The survey administrator would count all vehicles present upon entering the lot. Once the count is made, a questionnaire with location and time of day is distributed to each vehicle front windshield or directly handed to the driver if he/she is at the vehicle. If it is raining, surveys are enclosed in a clear plastic bag and placed on the windshield. While most vehicles receive a questionnaire, occasionally one leaves before a survey can be administered, hence the number of surveys distributed is slightly lower than the vehicle count. Also, if there are more than 50 vehicles in a lot, it is the intention that all are

counted, but only the first 50 counted receive a questionnaire to limit confusion and keep to a time schedule to complete all other vehicle counts and survey distribution. At Algonac of the 27 sampling days scheduled, all 27 days were sampled. None of the parking lots on any of the sampling days exceeded 50 vehicles.

This method does not capture input from those arriving by bicycle, on foot, or public transportation, only those arriving by vehicle. However, those arriving by vehicle directly support the Michigan State Park system through the purchase of the Recreation Passport or, in the case of non-residents, through the purchase of the non-resident motor vehicle permit. Those arriving by bicycle or on foot, if they have not purchased the Passport or a non-resident motor vehicle permit, are not providing such direct financial support.

For campers, surveys were distributed in the campground which has 370 sites. On a sample day, a survey administrator would randomly choose a campsite number between 1 and 370 and proceeded to sample the next 20 campsites where campers were present by handing them with a questionnaire. If there were less than 20 sites with campers present, then the number of occupied sites with camper present received a questionnaire. If there were more than 20 present, only 20 were to be distributed. All 27 sampling days were sampled in the campgrounds with the campgrounds hosts distributing the surveys per the sampling plan.

Respondents returned the questionnaire by U. S. mail using the postage paid, business reply feature of the postcard. Cards were directly delivered to Dr. Nelson at MSU.

Results

Results are presented in three ways. The first is observations/vehicle counts done by the survey administrator. These provide an assessment of use levels for each facility/parking area. The second is survey responses to questions 1-10, which focus on the respondent's experience the day they were sampled. Since these questions ask about the specific day's experience, there is no possibility of oversampling frequent users as each use is a use, whether done by a person who visits the park one time or 100 times in a year. However, Questions 11-16 are weighted to account for frequency of use bias as they ask about suggested improvements, things not to change and demographic information that defines the distinct park user. A frequent user, such as one who visits the park 100 times a year has 100 times greater chance of receiving a survey than one who visits the park once a year. To be able to use a one person, one vote rule where each person has an equal say in suggesting potential changes or the lack of them, the data is weighted to eliminate the frequency of use bias in sampling. For distinct users the data is weighted by the reciprocal of the number of uses the previous year (Q 16). If a person used the park once in the previous year, their weight is 1/1. If they used it 100 times, their weight is 1/100.

All results tables are provided in Appendix A and are numbered as they are in the text of this report.

Observations

There were 18 scheduled sample days in Summer and 9 in Fall. All days were sampled in each season. Table 1 shows that a total of 274 vehicles were counted in day use parking areas (189 vehicles in the summer and 85 in the fall) with a total of 266 questionnaires distributed (181 questionnaires in summer and 85 in fall) in day use lots. Campers were sampled on all sample days with a total of 541 surveys distributed (360 in summer and 181 in fall).

Survey Results: Uses

One hundred eight-three completed questionnaires were returned by camper respondents and 45 by day use respondents as of the November 26, 2018 cutoff (one month after the last day sampled) for a total of 228 respondents. The response rate for day visitors was 17%, for campers 34% and for the combined group 28%.

Activities and Party Characteristics

The average amount of time a day visitor vehicle was parked where it was sampled for day visitors was 3.9 hours and the mean day visitor party averaged 1.8 people per vehicle. A number of day visitors were grouped with others in other vehicles as the mean day visitor group had 4.9 people. For camper respondents, mean people per vehicle averaged 2.3 people per camper vehicle.

A total of 23 percent of day use respondents and 14 percent of camper respondents reported on the day they were sampled that one or more people in their vehicle had a physical impairment that seriously limited him/her from participation in work or recreation. These persons would be classified as disabled under the Americans with Disabilities Act.

Park visitors participated in a wide range of activities. Table 2 shows that the five most common activities for campers in order of participation were camping, scenic/freighter viewing, hiking/walking, bicycling on a paved road and photography. For day visitors the five most common activities were freighter/scenic viewing, shooting at a range, photography, hiking/walking and nature observation.

When campers were asked the one most important park activity to them, they were in descending order camping, freighter/scenic viewing and shooting at a range (Table 3). When day visitors were asked this question, their four most common responses in descending order were shooting at a range, freighter/scenic viewing, bicycling and picnicking.

One unique question asked at this park focused on use of the park's prairie areas. When asked if they or another in their vehicle had visited those areas during their park experience, 21% of campers and 9% of day visitors responded affirmatively.

Local Spending

Park visitor spending in the local area of Algonac SP was substantial by campers, but much more moderate by day users (Table 4). Campers from a single vehicle reported spending an

average of \$174 in the 24 hours prior to being surveyed with 94% spending something within 20 miles of the park. The greatest average amounts were for lodging fees, food and beverages from a store and restaurant/bar meals and drinks. Day visitor spending averaged much less at \$52 a vehicle with 67% of them spending something in the local area in the past 24 hours. The greatest portion of day visitor spending was on food and beverages from a store, vehicle related and restaurant/bar meals and drinks.

Satisfaction

When asked to rate their satisfaction with their Algonac SP experience the day they were sampled, day visitors were highly satisfied with a mean rating of 8.6, while the average rating for campers was lower but still strong at 8.0 on a scale of 1 – 9 where 1 is highly dissatisfied, 5 is neutral and 9 is highly satisfied (Table 5). Almost three-quarters of day visitors and slightly more than half of camper respondents gave their experience the highest satisfaction rating (9). Five percent of campers and no day visitor respondents rated their experience as dissatisfying, with four percent of campers and five percent of day visitors rating it as neutral.

When asked an open ended question about the one most important reason for their experience rating, campers were most likely to mention the good maintenance and patrol, that they liked the natural features of the park or liked the campground (Table 6). For day visitors, the most common positive comment was enjoying the shooting range opportunities or the natural features of the park. The most common concerns voiced by campers were regarding about poor facilities that needed updating or problems with mosquitos. For day users, no concerns were noted.

Distinct Users Opinions

To understand the opinions of distinct users, one open ended question asked visitors to identify the one most important change they would like at Algonac SP. This information is weighted as previously discussed to insure frequent users who are more likely to be sampled are not over represented in the results. If a respondent provided more than one desired change, only the first change was recorded in data entry. Campers most commonly suggested that the park be better maintained, that campground utilities be updated to accommodate higher amperage units or that mosquito control be implemented (Table 7). For day visitors, the three most frequent suggestions were no improvements needed, improve the shooting ranges with better facilities or improve access throughout the park for the disabled.

When asked what one most important thing should not be changed at Algonac SP (Table 8), campers were most likely to suggest the campground stay the same or no changes needed anywhere. They also were likely to support keeping the natural features of the park. For day visitors the most common suggestion of what not to change was no changes needed, to maintain the natural features of the park or not to reduce the shooting range opportunities.

Demographics

Distinct respondent campers had a mean age of 61, with ages ranging from 31-83. Forty-eight percent of distinct camper respondents were female and 52% male. For distinct day visitors, the

mean age was 57, with ages ranging from 29-85. Fifty-five percent of distinct day visitor respondents were female and 45% male.

The large majority of distinct campers and day visitors were Michigan residents (Table 9). Ontario Canada was the most common non-resident origins of campers. For distinct campers, the five most common zip codes were 48035 (Clinton Township Macomb County), 48313 (Sterling Heights), 48079 (St. Clair), 48423 (Davison) and 48179 (Ypsilanti). All day visitors who responded originated in Michigan. For distinct day visitors, the four most common zip codes were 48001 (Algonac), 48039 (Marine City), 48124 (Dearborn) and 48023 (Fairhaven).

Summary

Algonac is a long established southeastern Lower Michigan state park with a large campground and a front row seat to watch the shipping traffic of the Great Lakes go by at close range. It also has a substantial area of unique lake plain prairie that contains substantial biodiversity and has received considerable DNR management attention to maintain this diversity of native plants and animals and limit the presence and impact of invasive species. It appears a substantial minority of visitors investigated the prairie areas, with one in five camping parties and one in ten day visitor parties visiting a prairie area during their trip.

The park has a highly localized set of visitors, especially of day users. All day visitors who responded to the survey were Michigan residents. For campers, while the large majority were Michigan residents, the largest non-resident set of campers originated nearby in Ontario.

One valuable asset of the park is their excellent group of campground hosts. They did a fine job in effectively distributing the camper surveys, allowing park managers to continue their focus on park operations. Park staff distributed the surveys to day visitors in this relatively large southern Michigan State Park, combining distribution with day use site maintenance at the shooting ranges, trail heads, etc.

The overall satisfaction rating for the park was high, highlighted by a very high rating by day visitors. Unlike any other park sampled in the past three years, not one day use respondent rated their experience negatively and the mean rating of 8.6 was the highest of all park visitor studies. For campers there were relatively few concerns related to satisfaction. This in part is a testament to the work of staff to meet and exceed visitor expectations. When asked about improvements however, both campers and day visitors had suggestions. Two unique to this park were to upgrade shooting range facilities (primarily from day visitors) and to control mosquitos (primarily from campers).

One other unique situation emerged from the survey results regarding disabled visitors. Algonac had the highest proportion of day visitors with a disability found in any park studied (23%). A fairly common suggestion given by day visitors was then to improve the accessibility of the entire park including facilities. Given the level nature of the park and its large shaded and open campground as well as the large mowed day use areas adjacent to the campground, it seems the topography would favor such efforts.

Park visitor spending was substantial by campers, but much less so by day visitors. With many day visitors coming from origins less than 20 miles from the park, it is logical that the park would not trigger substantial spending as part of the park experience. Campers on the other hand, even though the vast majority were from Michigan, did spend considerably across the economic spectrum for restaurant experiences, camping fees and food and beverages from nearby retail grocery and convenience stores. Considering the large campground, this is a positive for the area near the park, bringing in new spending to the area.

Acknowledgements

The authors would like to thank Michigan DNR Park and Recreation Division permanent and seasonal field staff for their distribution of the survey instrument, record keeping of the number of surveys distributed and counting vehicles during sampling. We also greatly appreciate the cooperation throughout the project with Division Planning staff.

Appendix A. Tables of Results

Table 1. Vehicle counts and surveys distributed on-site 2018 at Algonac SP day use areas and campgrounds.

Parking Lot/Area	Summer Count	Summer Surveys Dist.	Fall Count	Fall Surveys Dist.	Total Count	Total Surveys Dist.
Marsh Road Lot	2	2	3	3	5	5
Trap Range Lot	26	26	28	28	54	54
Archery Range/Blazing Star Trail Lot	1	1	2	2	3	3
St. Clair Riverside Lot	61	60	15	15	76	75
Main Day Use Lot	99	92	37	37	136	129
Total Day Use Lots	189	181	85	85	274	266
Campers Sampled in Campgrounds	NA	360	NA	181	NA	541

Table 2. Percent of Algonac SP respondents participating in selected recreational activities during sample day in 2018.

Activity	Campers	Day Visitors	All
Camp	100%	0%	80%
Scenic/freighter viewing	84	44	76
Hike/walk	66	22	57
Bicycle on a paved road	44	11	37
Photography	26	24	26
Nature observation	25	18	24
Picnic	24	13	22
Shoot at range	20	33	22

Activity	Campers	Day Visitors	All
Fish from shore	15	13	15
Swim	15	13	14
Sunbathe	14	11	13
Bicycle on unpaved trail	11	2	9
Fish from a boat	3	2	3
Metal detect	3	2	3
Paddle canoe/kayak	2	0	2
Attend Explorer program	2	0	1
Pick berries/mushrooms	0	2	<1
Hunt/Scout	0	2	<1
All others	11	16	12

Table 3. Percent of Algonac SP respondents citing one most important recreational activity during sample day in 2018. (a)

Activity	Campers	Day Visitors	All
Camp	69%	0%	57%
Scenic/freighter viewing	18	14	17
Shoot at range	3	31	8
Bicycle	<1	10	2
Picnic	<1	7	2
Nature observation	0	5	<1
Hike	0	2	<1
Fish	<1	5	<1
Swim	0	5	<1
Sunbathe	0	5	<1
All others	8	16	8
Total	100%	100%	100%

(a) Total may not add to 100% due to rounding

Table 4. Expenditures of on-site respondents during past 24 hours within 20 miles of Algonac SP in 2018 (a).

Item	Campers Mean \$ (% spent something)	Day Visitors Mean \$ (% spent something)	All Mean \$ (% spent something)
Lodging fees	\$62 (61%)	\$1 (7%)	\$49 (50%)
Restaurant & bar meals & drinks	34 (63)	9 (27)	29 (55)
Grocery and convenience store food & drink	35 (71)	15 (46)	31 (66)
Vehicle related	22 (42)	13 (43)	20 (42)
Sporting goods	8 (16)	12 (11)	
All other items including souvenirs	13 (43)	2 (4)	11 (35)
Total	\$174 (94%)	\$52 (67%)	\$149 (89%)

(a) Totals may not exactly add up due to rounding.

Table 5. Rating of satisfaction with Algonac SP use experience by respondents on the day sampled in 2018.

Rating Scale	Campers	Day Visitors	All
1 (very dissatisfied)	2%	0%	1%
2	1	0	1
3	1	0	<1
4	1	0	<1
5 (neutral)	4	5	4
6	1	0	<1
7	12	5	11
8	23	16	21
9 (very satisfied)	56	74	59
Total	100%	100%	100%
Mean Rating (a)	8.0	8.6	8.1

(a) Rating scale: 1=highly dissatisfied; 5=neutral; 9=highly satisfied.

Table 6. Response to open-ended questions about one most important reason for satisfaction rating with Algonac SP use by on-site respondents on the day sampled in 2018. (a)

Reason	Campers	Day Visitors	All
Clean, well maintained/patrolled	24%	10%	21%
Nature, wildlife, quiet	15	18	16
Generally like, wonderful, amazing	9	16	11
Like campground	12	0	10
Like shooting ranges	<1	18	4

Positive, friendly staff	5	3	4
Like river	4	3	3
Poor facilities	4	0	3
Poor facilities	4	0	3
Like freighter viewing	2	0	2
Too many mosquitos	3	0	2
Don't like campground	2	0	2
Like easy access to surface waters	1	0	1
Positive interaction with others	1	0	1
Overcrowded	1	0	1
Poor maintenance/patrol	1	0	1
Like many available activities	0	5	1
Like shaded park/parking	<1	5	1
Riverview blocked by campers/vehicles	2	0	1
Other positives with one response or hard to classify	5	11	4
Other negatives with one response or hard to classify	6	11	9
Total	100%	100 %	100 %

(a) Total may not add to 100% due to rounding.

Table 7. Response to open ended question about one most important improvement at Algonac SP by distinct on-site user survey respondents in 2018 (a).

Improvement	Campers	Day Visitors	All
Nothing to improve/change	12%	36%	16%
Improve park maintenance	15	11	14
Improve campground utilities	12	2	10
Have mosquito control	12	<1	10
Improve park roads	8	1	7
Expand campground	5	0	4
More shade trees	4	<1	4
Improve ADA access to facilities	2	9	3
Improve campground store/concessions	4	0	3
Improved water access	1	8	2
Update and increase facilities (e.g. showers)	2	2	2
Improve trails	2	0	2
Upgrade shooting ranges	0	11	2
More parking	2	0	2
Move highway out of park	2	<1	2
Provide swimming pool	2	0	2
Improve playground	1	<1	1
Other hard to classify or less than 1% of responses	14	18	14
Total	100%	100%	100%

(a) Total may not add to 100% due to rounding.

Table 8. Response to open ended question about one most important thing not to change at Algonac SP for distinct on-site user survey respondents in 2018. (a)

Don't change	Campers	Day Visitors	All
Don't know/Keep as is	22%	58%	29%
Campground	22	2	18
Nature/wildness/quiet/wildlife	12	12	12
Level of maintenance	6	8	6
Staff/personnel	8	0	6
Facilities	5	0	4
Trails	5	0	4
Facilities	2	9	4
Price/value	5	0	4
Shooting ranges	1	10	3
River/waterfront	2	0	2
Location	2	<1	2
Hours/Seasons of operation	2	0	2
Parking	2	0	2
Other hard to classify or less than 1% of responses	4	1	3
Total	100%	100%	100%

(a) Total may not add to 100% due to rounding.

Table 9. Origins of distinct park visitors to Algonac SP by state for on-site user survey respondents in 2018 (a)

State	% Campers Originating	% Day Visitors Originating	% All Originating
Michigan	82%	100%	92%
Ontario Canada	5	0	4
Illinois	2	0	1
Texas	2	0	1
Oklahoma	2	0	1
All other states	<1	0	<1
Total	100%	100%	100%

(a) Total may not add to 100% due to rounding.

Appendix B. On-site questionnaire Algonac State Park

Algonac State Park Use Assessment _____ Date

Dear Driver:

MSU and the Michigan DNR are cooperating to measure recreation use of Algonac State Park as part of updating the park management plan. Please take the 4 minutes needed to complete this form and mail it to us postage paid or put it in one of the drop boxes marked "Park Surveys". You will be anonymous and your name will not be connected with study results. You indicate your voluntary agreement to participate by completing and returning this survey.

1. Please check ALL of the activities in which one or more of the people from your vehicle participated while you were in the park today.

- Hiking/Walking/Running
- Bicycling paved road/trail
- Bicycling unpaved trail
- Fishing from boat
- Fishing wade/shore/dock
- Pick berries/mushrooms
- Nature observation (birding, etc.)
- Photography
- Camping
- Picnicking
- Hunting/Scouting
- Attend Explorer/program
- Other (_____)
- Paddling watercraft
- Sunbathing
- Swimming
- Metal detecting
- Shoot at Range
- Freighter viewing

2. Which ONE activity was the MAIN reason to visit the park today? _____

3. How many HOURS was your vehicle in the park today? _____ # HOURS

4. Including you, how many PEOPLE came here in this vehicle? _____ # PEOPLE

5. Including other vehicles, how many people are in your group? _____ # PEOPLE

6. Does anyone in your vehicle have an impairment that seriously limits his/her participation in work or recreation? ___ Yes ___ No

7. Did you visit the prairie areas of the park during this visit? ___ Yes ___ No

8. During the past 24 hours, how much did you and those in your vehicle spend within 20 miles of Algonac State Park on the following items.

- Vehicle related (gas, oil, trip related repair, etc.) \$ _____
- Restaurant & bar meals & drinks \$ _____
- Grocery or convenience store food, drink or ice \$ _____
- Sporting goods (fishing supplies, camping gear, etc.) \$ _____
- Lodging fees (camping, motel, cabin rental, etc.) \$ _____
- All other items (boat rental, firewood, souvenirs, ice, etc.) \$ _____

9. Please rate on a scale of 1-9 (w/ 1 highly dissatisfied; 5 neutral; and 9 highly satisfied), how satisfied you were with today's Algonac SP experience. #_____Rating

10. What is the ONE most important reason for your rating?_____

11. What ONE change would you recommend to improve Algonac SP?_____

12. What ONE thing would you recommend not change at Algonac SP?_____

13. What is your principal home zip code? _____

14. Your age?_____ years 15. Please circle your gender. M or F

16. How many days did you visit Algonac SP in 2017 (last year)? _____ #days

Thanks for your help in improving the management of Algonac SP.

Dr. Chuck Nelson, Project Director

MSU Dept. Community Sustainability, 480 Wilson Rd.,

East Lansing, MI 48824 Phone (517) 432-0272 nelsonc@msu.edu ____Site

Appendix C. Algonac Sampling Schedule 2018

- 27 sample days prescribed, 27 accomplished in day use and 27 in campground.
- Based on Summer and Fall use levels per 2017 DNR park use data
- For our study purposes
 - Summer sampling June-August
 - Fall sampling September - November
- Sample days are scheduled with 2/3 on weekdays and 1/3 on weekends similar to calendar.
- Algonac SP sampling will begin at one of the following times each sample day: 9 AM, Noon, 3PM and 6PM.

Appendix D. Algonac State Park Planned On-Site Sampling Calendar

Day	Date	Start Time	Personnel
Tue	6/26	Noon	
Sat	6/30	3 pm	
Mon	7/1	9 am	
Fri	7/6	6 pm	
Sun	7/8	9 am	
Wed	7/11	3 pm	
Sat	7/14	Noon	
Thu	7/19	9 am	
Sun	7/22	Noon	
Tue	7/24	6 pm	
Fri	7/27	3 pm	
Wed	8/1	9 am	
Thu	8/9	Noon	
Sun	8/12	6 pm	
Mon	8/13	3 pm	
Sat	8/18	9 am	
Tue	8/21	9 am	
Wed	8/29	6 pm	
Sat	9/1	Noon	
Thu	9/6	3 pm	
Mon	9/10	Noon	
Fri	9/14	9 am	
Sun	9/23	3 pm	
Tue	10/2	9 am	
Sat	10/13	3 pm	
Wed	10/17	6 pm	
Fri	10/26	9 am	

APPENDIX D – CAPITAL OUTLAY PROJECTS OPINION OF PROBABLE COST

State Park Funding

The primary funding sources for state park improvement and development projects are Recreation Passport sales (motor vehicle registration fee), the Park Endowment Fund (generated from royalties from oil, gas and mineral extraction on public land) and the Park Improvement Fund (from camping and other state park user fees). One-time appropriations from the state General Fund may also be ear marked for specific needs but are not guaranteed. The annual capital outlay budget for state parks varies significantly from year to year, as illustrated by the table below. The state park system is 100 years old and much of the infrastructure is aging. Identified infrastructure needs across the state park system (excluding Belle Isle Park, trail infrastructure, and state waterways infrastructure) is currently estimated to be over \$278 million.

Fiscal Year	Total Annual Capital Outlay Project Budget**	Identified Infrastructure Needs
FY20	\$ 15,845,000	\$ 278,159,950
FY19	\$ 18,925,000	\$ 273,498,836
FY18	\$ 14,520,000	\$ 264,089,912
FY17	\$ 10,400,000	\$ 285,513,487
FY16	\$ 8,661,000	\$ 312,594,557
FY15	\$ 6,051,500	\$ 303,808,685

***Capital Outlay funds dedicated to funding state park projects; excluding funds for Belle Isle Park, major emergency repairs, District Major Maintenance Projects, etc.*

With such a large gap between financial need and budget, all projects are carefully analyzed to look at innovative solutions to increase efficiencies or downsize assets.

Estimated Cost of Proposed Developments

The following table provides an estimate of probable cost for each capital outlay development project proposed at Algonac State Park over the next ten years. Management and operations actions and small projects, which are funded out of district or park funds, are not included in this list but may have additional financial implications. The costs are based on information available at the time and will be refined as conceptual and detailed designs are completed. Where noted, the costs may only include studies or project planning, which will provide direction for development costs if determined appropriate. The costs are based on 2021 prices and should be adjusted according to the consumer price index and the market at the time of implementation.

The following action goals are ranked in terms of priority based on health, safety, and welfare, as well identified need and ease of implementation (cost, ability to implement with own staff, partnerships etc.).

Priority Level 1 projects indicate those that should be addressed within the next 2 years. Priority Level 2 projects include those that should be addressed within 2-5 years. Priority Level 3 projects are desired but can be tackled in the next 5-10 years once funding has been identified.

PRD will seek future internal funding, alternative funding sources, partnerships and other potential mechanisms for implementing the desired future conditions defined in this plan, however the costs listed below do not guarantee funding and will likely be effected by the COVID-19 crisis. On an annual basis, PRD districts determine priorities for project planning and project capital outlay. Each district's top projects are then evaluated at a state-wide level for available funds.

INFRASTRUCTURE & DEVELOPMENT: CAPITAL OUTLAY		
Action Goals	Priority	Opinion of Probable Costs*
Resurface, chip seal, reconstruct & repave roads and parking areas as needed throughout day-use area and campground roads including drainage and stormwater improvements	1	\$2,500,000
Expand the sanitation station	1	\$600,000
Replace the bathroom in the northern section of the Riverfront Campground with full hook-up campsites	1	\$1,000,000
Replace/Repair water distribution lines in the Wagon Wheel Campground	2	\$550,000
Renovate/replace day use toilet building	2	\$ 850,000
Improve barrier free ADA accessibility at day use area including connecting restrooms with parking lot, shelter and play areas	2	\$50,000
Replace headquarters and shop facilities	3	\$1,250,000
Install removable floating accessible canoe/kayak launch at riverside boating access site	3	\$30,000
Install removable accessible fishing dock	3	\$500,000
Pave riverside parking area and improve accessibility	3	\$350,000
Install second shelter at day use area	3	\$30,000
Install cold storage building at park headquarters	3	\$100,000
**TOTAL OPINION OF PROBABLE COSTS (10 YEARS)		\$7,810,000

**Does not guarantee funding.*

***Excludes costs yet to be identified by studies to determine best way to proceed and costs associated with projects that are already funded.*

APPENDIX E – RESOURCE MAPS

Regional Overview

Funding Sources

Natural Areas & Natural Communities

Forest Stands and Land Cover




Mineral Rights Ownership

Hunting Safety Zone



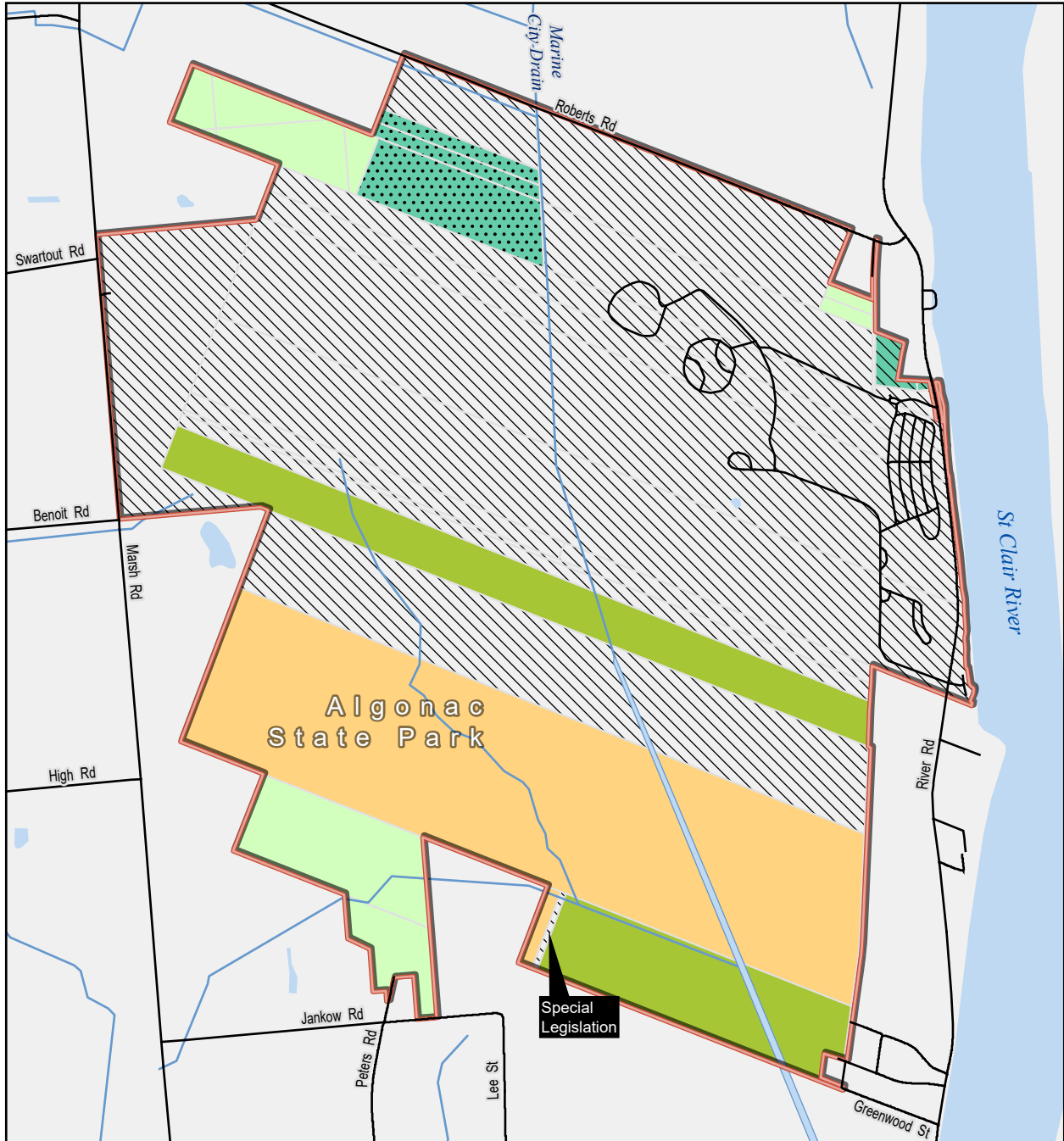
MICHIGAN DEPARTMENT OF NATURAL RESOURCES
Algonac State Park - Regional Overview



-  County Boundary
-  Algonac State Park
-  Waterbody

Updated: 04/02/2021





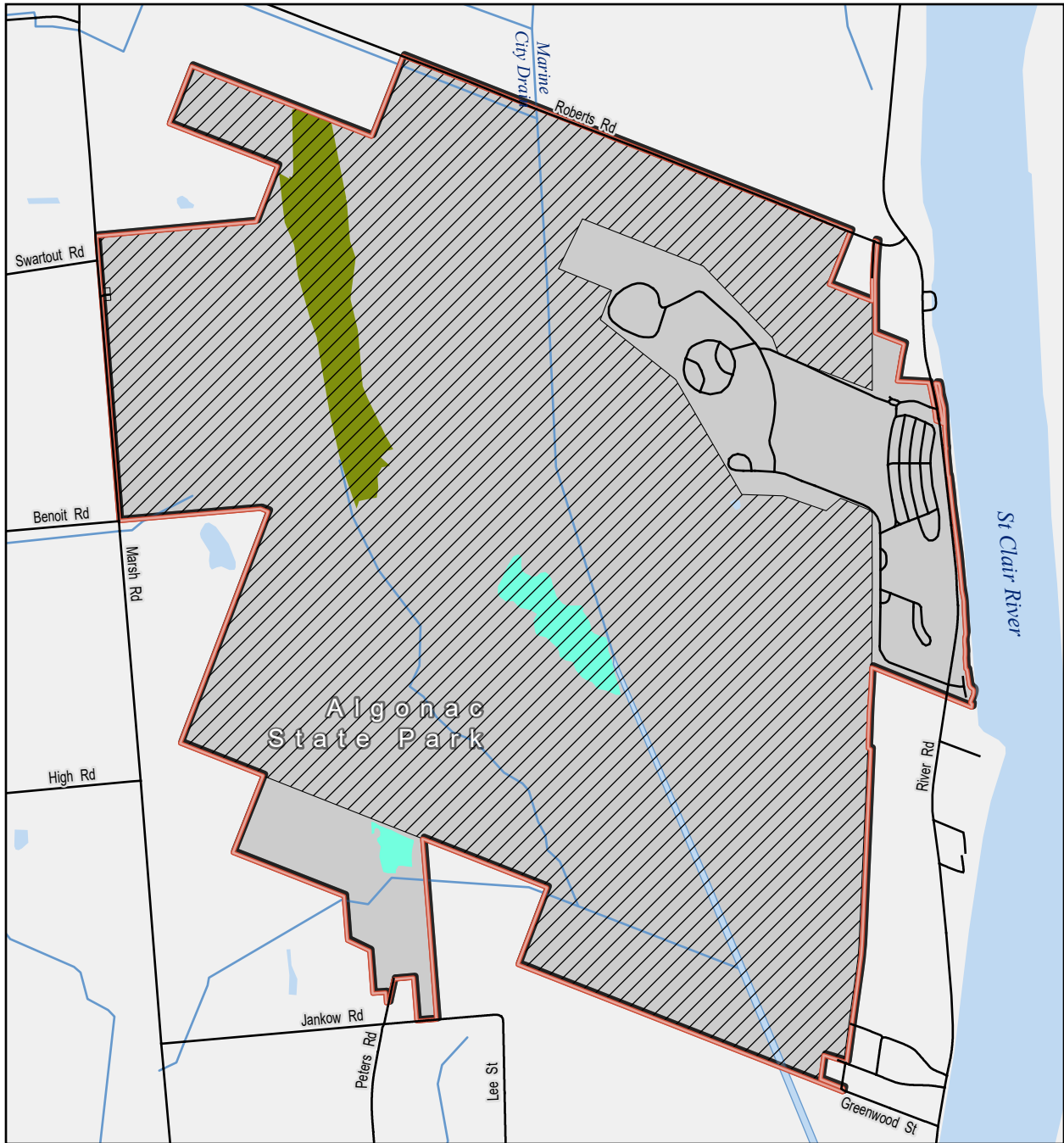
MICHIGAN DEPARTMENT OF NATURAL RESOURCES



Algonac State Park - Funding Sources

- | | | |
|---------------------|--|--------------------------|
| State Park Boundary | Federal Land and Water Conservation Fund | Michigan Land Trust Fund |
| Road | Michigan Natural Resources Trust Fund | Recreation Bond Fund |
| Waterbody | Special Legislation | |





MICHIGAN DEPARTMENT OF NATURAL RESOURCES

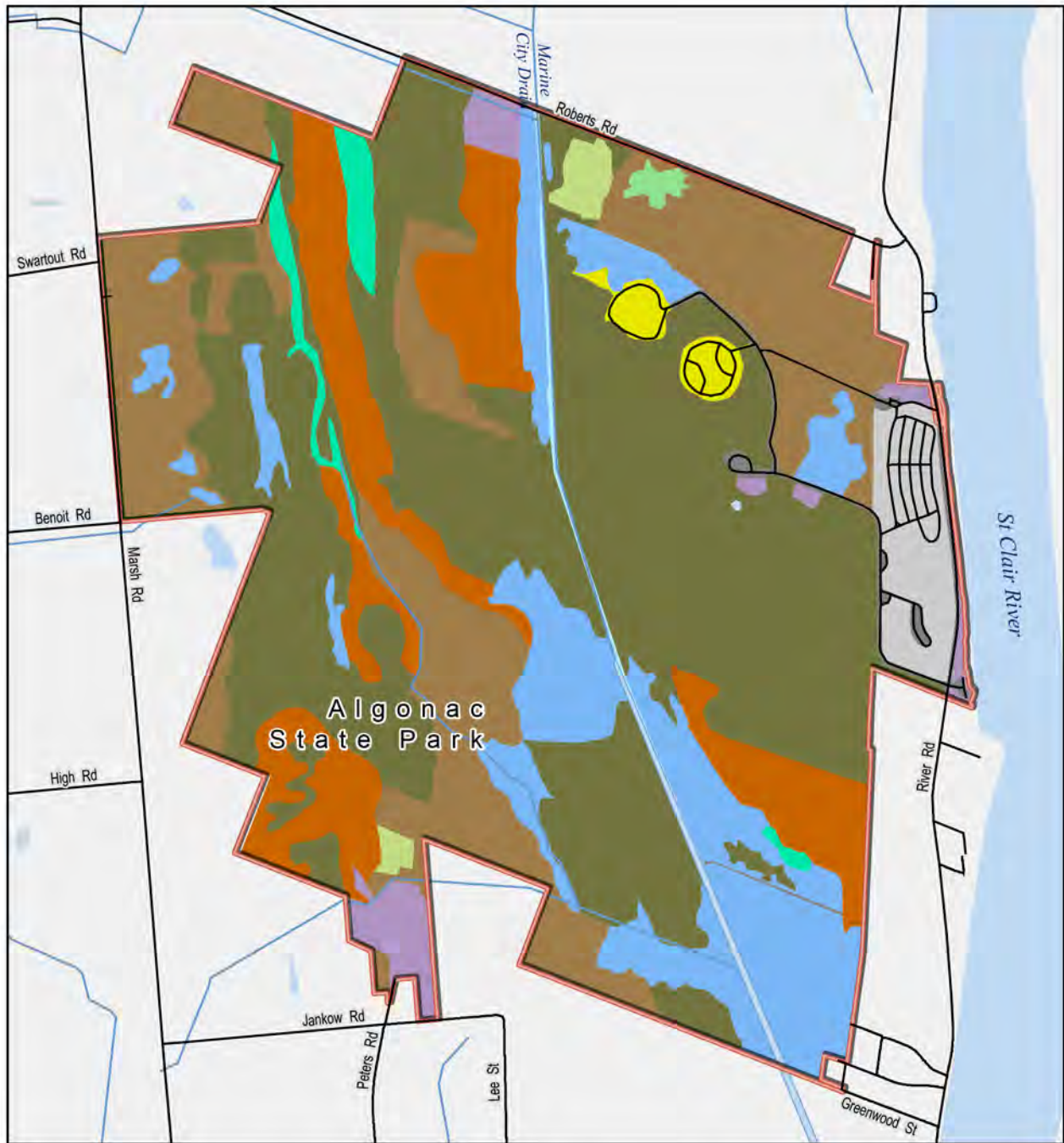


Algonac State Park - Natural Areas & Natural Communities

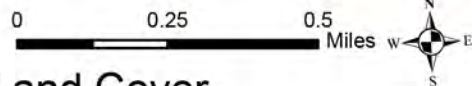
- | | |
|--|-----------------------------|
| State Park Boundary | Natural Communities* |
| Road | Lakeplain Oak Openings |
| Waterbody | Lakeplain Wet-mesic Prairie |
| Natural Areas | |
| Algonac Prairie and Savanna Natural Area | |

Updated: 06/01/2021
 *Natural Communities of Michigan (Michigan Natural Features Inventory)





MICHIGAN DEPARTMENT OF NATURAL RESOURCES



Algonac State Park - Forest Stands and Land Cover

- | | | |
|-------------------------------|--------------------------|--------------------|
| State Park Boundary | Mixed Upland Deciduous | Upland Shrub |
| Road | Planted Pines | Low Density Trees |
| Waterbody | Lowland Deciduous Forest | Parks/Golf Courses |
| Forest Stands and Land Cover* | Non-Forest Covertype | Water |
| Forest Covertype | Roads/Parking Lot | Lowland Shrub |
| Mesic Southern Forest | Herbaceous Openland | Emergent Wetland |
| Oak Types | | |

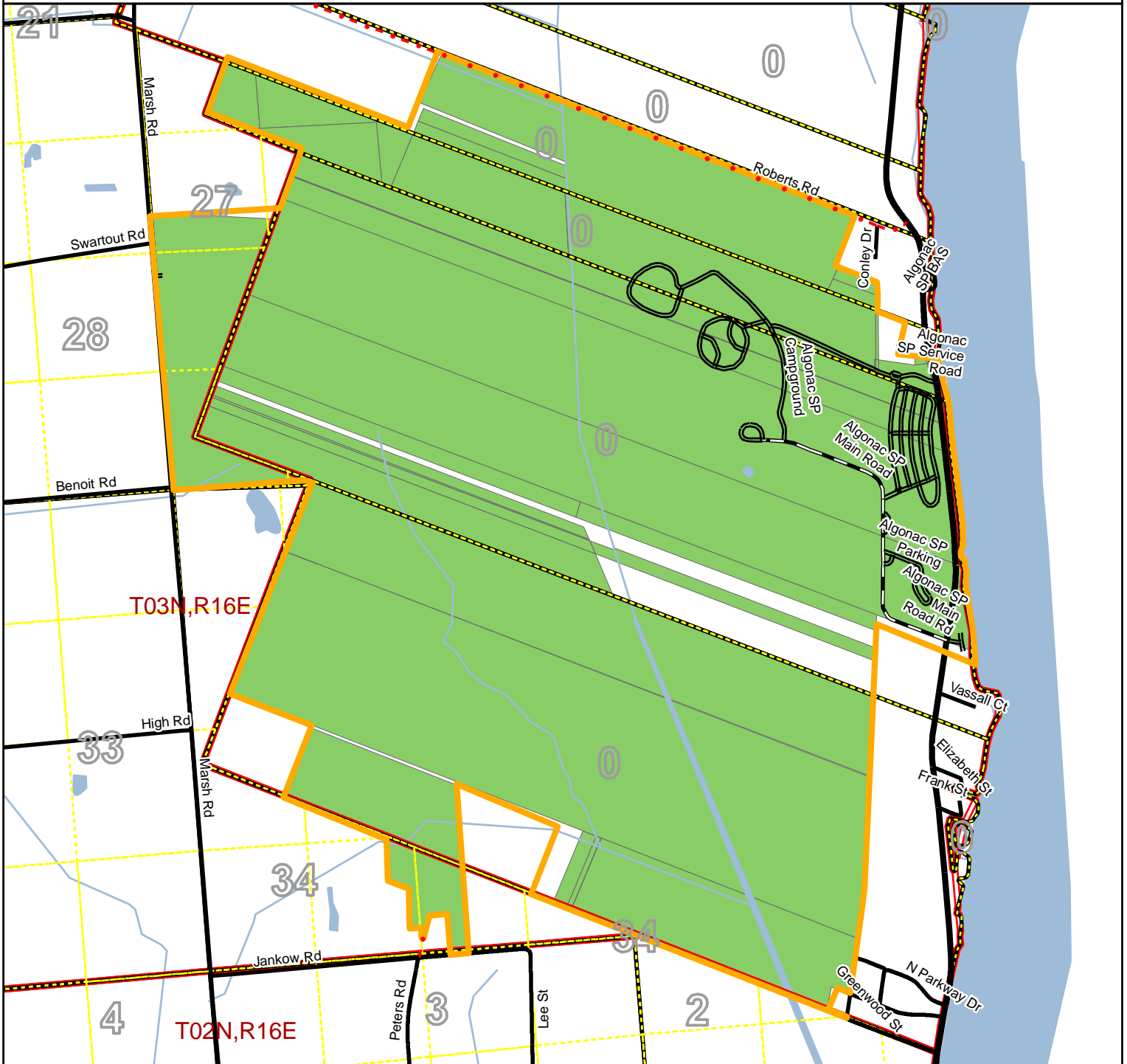
Updated: 04/02/2021

*Forest Stand Covertypes as determined by DNR forest stand examiners during the DNR's forest inventory process



State Parks Mineral Rights Ownership

Algonac State Park

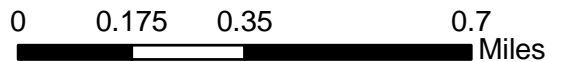


Legend

- | | |
|--------------------------|---------------------------------------|
| State Park Boundary | DNR - Primary Forest Road |
| Mineral Ownership Parcel | DNR - Secondary Forest Road |
| Lake/River | DNR - Forest Access Route |
| Stream | Federal / State Highway |
| Township/Range | Federal / State / County - Paved Road |
| Section | Federal / State - Dirt / Gravel Road |
| Quarter Quarter Section | County - Gravel Road |
| | County - Dirt Road (Seasonal) |
| | Private - Paved Road |
| | Private - Dirt / Gravel Road |

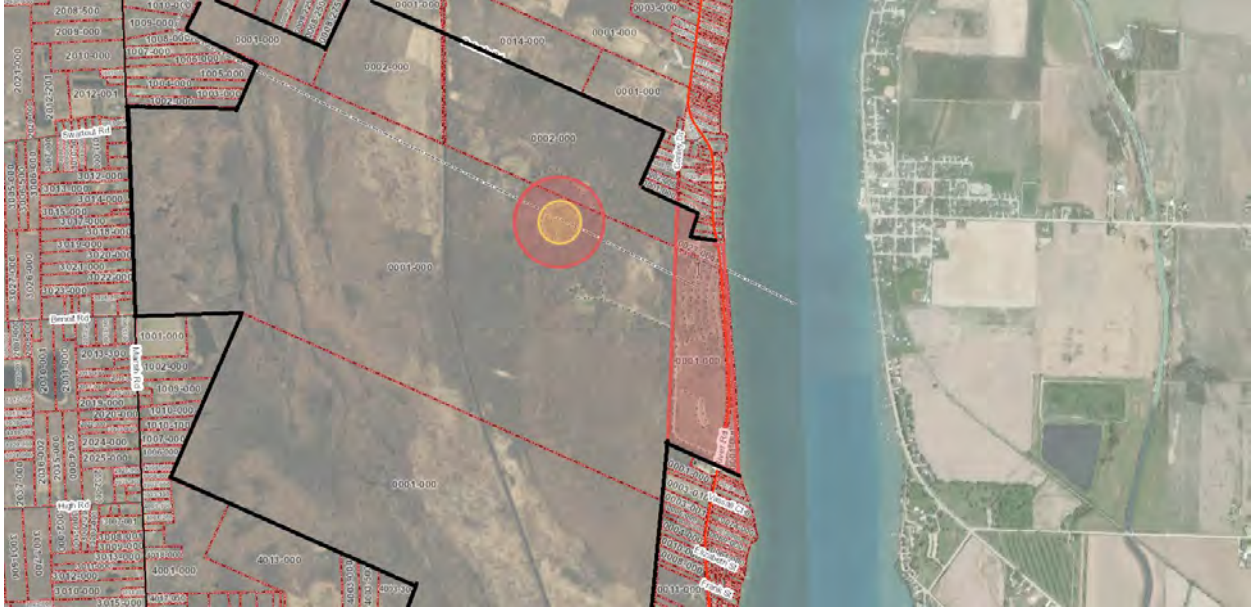
Algonac State Park

State Park Area: 1,462.9 acres
 Minerals Ownership: 1,387.5 acres
 Minerals Ownership Share: 94.8%



DNR GIS
 Resource Assessment Section

Date Modified: 12/11/2018



Hunting Safety Zone

 Safety Zone – No hunting