

WATERLOO RECREATION AREA

PHASE 2 GENERAL MANAGEMENT PLAN

LONG-RANGE ACTIONS

Ten-year action plan to protect the natural and cultural resources and provide access to recreation and educational opportunities at Waterloo Recreation Area.



Michigan Department of Natural Resources
Parks and Recreation Division
08/25/2025

Page left intentionally blank

This plan was prepared by:
Matt Lincoln, Park Management Plan Assistant
Michigan Department of Natural Resources, Parks & Recreation Division

Waterloo Recreation Area Phase 2 General Management Plan Approvals:



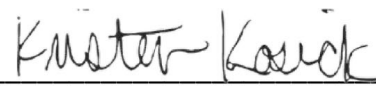
Chief, Planning & Infrastructure Section

08/25/2025
Date



Chief, Field Operations Section

8.25.25
Date



Chief, Parks & Recreation Division

8/28/25
Date



Waterloo Equestrian Campground

PLAN APPROVAL RECOMMENDATIONS:

Reviewed and approved via e-mail by:

Matt Schweda, Park Supervisor
Joe Strach, Regional Field Planner
Shane Morse, District Supervisor
Ray Fahlsing, Stewardship Unit Manager
Debbie Jensen, Park Management Plan Administrator

Reviewed and approved by:

Parks and Recreation Division Section Chiefs

Presented for information to:

MSPAC Stewardship Subcommittee
Michigan State Park Advisory Committee (MSPAC)



Portage Lake Beach

Table of Contents

- 1. Introduction 6
 - 1.1. Planning Objectives 6
 - 1.2. Planning Process Overview 6
 - 1.3. Planning Team 7
 - 1.4. Stakeholder and Public Input Overview 8
- 2. Phase 1 General Management Plan Review 10
 - 2.1. Significance Statements 10
 - 2.2. Management Zones 12
 - 2.3. Changes Since Phase 1 General Management Plan 13
 - 2.4. Supporting Analysis Updates 16
- 3. 10-Year Action Plan 23
- 4. Implementation Strategy 27
 - 4.1. Implementation Toolbox 28
 - 4.2. Documentation of Changes 28
 - 4.3. Documentation of Accomplishments 29
 - 4.4. Five-year Review Process 29

Appendices

- Appendix A: Legal Mandates Update**
- Appendix B: Stakeholder and Public Input Summary**
- Appendix C: Capital Outlay Opinion of Probable Costs**
- Appendix D: Resource Maps**

1. Introduction

Waterloo Recreation Area is located in the southern part of Michigan’s Lower Peninsula, just east of the City of Jackson. The park land was gifted to the State of Michigan in 1946 from the federal government for the purposes of providing public outdoor recreation opportunities. Waterloo Recreation Area is the third largest park in the Michigan state park system; over 20,000 acres boasting 11 inland lakes and convenient access from I-94. The park is home to two seasonal modern campgrounds, rustic and modern cabins, boat launches, rustic camping opportunities, numerous picnic areas, nearly 80 miles of trails, including 21 miles of equestrian trails, 10 miles of mountain bike trails, and the Waterloo Pinckney hiking trail. The park also includes the Gerald Eddy Discovery Center which offers interpretive education opportunities.

The General Management Plan (GMP) guides the future long-term management of Waterloo Recreation Area and is based on the mission of the Parks and Recreation Division (PRD): “to acquire, protect and preserve the natural and cultural features of Michigan’s unique resources, and to provide access to land and water public recreation and education opportunities”.

1.1. Planning Objectives

The objective of the GMP is to bring together PRD staff, representatives from other divisions of the Department of Natural Resource (DNR), stakeholders and the public into a planning process that directs management decisions and implementation strategies for the park.

The [Phase 1 GMP for Waterloo Recreation Area](#), approved in 2012, established a 20-year management zone plan and defined the purpose and significance of the park. The supporting analysis included in the Phase 1 GMP provides important background information on the recreation area such as setting, area demographics, history, land ownership, legal mandates, and existing cultural, natural and recreation resources. This Phase 2 GMP builds upon the phase 1 planning effort by identifying actions the DNR desires to accomplish in the park as a whole and in each of the management zones over the next ten years. These are implementation items for park staff and partners, addressing infrastructure, park management, and operations that impact resource protection and visitor experience at the park. It replaces a previous phase 2 plan approved in 2013.

1.2. Planning Process Overview

The Waterloo Recreation Area planning team met periodically over a 12-month period, beginning in spring of 2024. For this Phase 2 GMP, the first step was to review the phase 1 plan to ensure that no conditions have changed that would result in the need to amend the overall guiding document and the 2013 phase 2 plan to determine what actions have been accomplished and what actions may carry over to this new plan.

Input was sought from stakeholders and the public during the planning process to ensure the DNR is responsive to its partners and visitors. Stakeholders were invited to provide input early in the planning process through a workshop designed to identify strengths, challenges, and opportunities at Waterloo Recreation Area. A separate stakeholder meeting was held to gather input on the future use of the former Cassidy Prison site. The planning team used this information to guide the development of the draft Phase 2

GMP. The public was invited to review and comment on the draft plan through the project website or at a public meeting. The planning team then carefully reviewed all the comments and suggestions received. Review of suggestions involved determining the level of feasibility, recreation and natural resource impact, and suitability when considering the park as a whole.

Revisions made to the plan as a result of the planning team’s public input review included revising the equestrian campground action to focus on the existing equestrian campground, adding an action for disc golf course improvements, clarifying the action for mountain bike trail expansion, adding an action for equestrian trail expansion, and modifying language of several actions to clarify intent. Cultural resource actions were also added in response to DNR Archaeologist review.

A group of disc golf advocates provided comments suggesting the development of a world-class disc golf course at the former Cassidy Prison site. 405 survey and public meeting attendees were in favor of developing the former Cassidy Prison site for multiple uses that compliment the nearby Pinckney-Waterloo Trail and Cassidy Lake while 57 comments were collected advocating for a disc golf course at the former Cassidy Prison site. The planning team reviewed these comments and determined that a disc golf course in this location would limit other uses at the site and impact high quality natural resources.

1.3. Planning Team

This Phase 2 GMP was developed with valuable input and expertise of the planning team, which included the individuals listed below.

NAME	TITLE	DIVISION
Matt Schweda	Unit Manager	Parks and Recreation Division
Michelle Lupenski	Unit Supervisor	Parks and Recreation Division
Debbie Jensen	Management Plan Administrator	Parks and Recreation Division
Matt Lincoln	Lands Program Manager/Plan Administrator	Parks and Recreation Division
Ray Fahlsing	Stewardship Unit Manager	Parks and Recreation Division
Shane Morse	Rose Lake District Supervisor	Parks and Recreation Division
Joe Strach	Regional Field Planner	Parks and Recreation Division
Sage Hegdal	Trail Specialist	Parks and Recreation Division
Robb McKay	Historical Architect	Parks and Recreation Division
Elissa Buck	Commercial Services/ Land Use Program Administrator	Parks and Recreation Division
Chuck Dennison	Pinckney Recreation Area Unit Supervisor	Parks and Recreation Division
Shane Crawford	Forest Fire Officer Supervisor	Forest Resources Division
Denny Tison	Wildlife Biologist	Wildlife Division
Peter Rose	Geologist	Minerals Management
Zach O’Dell	Park Interpreter	Marketing and Outreach Division
Holly Vaughn	Southern Michigan Interpretive Field Manager	Marketing and Outreach Division
Luke Pickrahn	Archaeologist	Michigan History Center
John Buszkiewicz	Fisheries Biologist	Fisheries Division
Tom Jaakola	Conservation Officer	Law Enforcement Division
Cullen Knoblaugh	Conservation Officer	Law Enforcement Division

1.4. Stakeholder and Public Input Overview

Cassidy Prison Site Stakeholder Meeting

A stakeholder meeting was held on January 18, 2024, at the Eddy Discovery Center to guide future use of the former Cassidy Prison site recently acquired by the park. Twenty-four stakeholder groups were invited to the meeting.

A total of 12 participants represented government and non-profit organizations from around the region. The meeting began with a short presentation of the history and features of the site, including sideboards to maintain the site within the context of Waterloo Recreation Area, followed by the input exercise. The meeting concluded by outlining the next steps of the planning process including how this information will be used to develop actions in the Phase 2 General Management Plan update.

Strengths identified included the lake and natural resources of the property. Challenges identified included lake management and limited parking in the area. Opportunities identified included improved lake access, rustic campsite development, mountain bike skills course and adaptive trail development, winter activities and parking for the Pinckney-Waterloo Trail and the DTE Trails.

Stakeholder Meeting

A stakeholder meeting was held on July 30, 2024, at the Gerald Eddy Discovery Center, to guide the Phase 2 GMP for Waterloo Recreation Area. Participants were invited to provide their input, identifying strengths, challenges and opportunities related to the park. A total of 19 participants represented government, business and tourism, schools and non-profit organizations. The meeting began with a short presentation of the Phase 1 GMP that was completed in 2012 and a review of the planning process for this phase 2 plan. A full report of the meeting is provided in Appendix B.

Strengths identified by stakeholder representatives in attendance included proximity to population centers, a wide variety of recreation opportunities, diversity of wildlife species, wide variety and miles of trails and educational opportunities.

Challenges for the park identified at the meeting included trail erosion, invasive species, Discovery Center building maintenance, lack of electric at equestrian campground, and lack of public transportation to the park from urban areas.

Opportunities identified included increasing education opportunities, improving trail conditions, improving wayfinding and mapping, and creating a semi-modern equestrian campground.

Public Meeting

A public meeting was held at the Eddy Discovery Center on January 22, 2025, to review the draft Phase 2 GMP and solicit comment on the 10-year action plan. The draft phase 2 plan was also posted on the DNR's website and comments were invited via e-mail and an online survey. A press release went out three weeks in advance of the meeting to 19,944 subscribers of the GovDelivery system, including stakeholders associated with the park. 159 people attended the public meeting and provided comments. A full report is provided in Appendix B

Tribal Outreach

The department's tribal liaison reached out to the twelve federally-recognized tribes in Michigan with a letter notifying them of the GMP process, the timeline, and inviting input. No comments were received.



Aerial view of lake. Photo credit Ryan de Vries & Michigan Sky Media LLC.

2. Phase 1 General Management Plan Review

The Phase 1 GMP for Waterloo Recreation Area was approved on March 19, 2012. The following information summarizes the significance statements and management zones for the park, which were defined in the plan.

2.1. Significance Statements

Waterloo Recreation Area was determined to be significant for the reasons listed below. These statements contain minor corrections made by the phase 2 planning team without changing the original meaning or intent.

- The recreation area has an extensive, internal trail system with opportunities to provide external connections to the region via the Lakelands Trail State Park and the Border-to-Border Trail.
- The park is the third largest property in the state park system and the largest in the Lower Peninsula. The habitat of the northern unit of Waterloo Recreation Area is managed by the DNR Wildlife Division through an agreement with the DNR Parks and Recreation Division.
- The recreation area has a rich cultural history including two historic districts, encompassing 37 historic structures, eligible for listing on the National Register of Historic Places. Three additional buildings are also eligible for listing.
- The Eddy Discovery Center, one of only six interpretive centers in the state park system, is located within the recreation area. The facility offers a nature study area with interpretive and education opportunities.
- A variety of camping and lodging opportunities are available at the recreation area, including rustic and modern campgrounds, cabins and a yurt.
- The park has a wide variety of recreational opportunities including the DTE Energy Foundation Mountain Bike Trail system, extensive equestrian trails, a disc golf course and opportunities for fishing, boating, hunting, trapping, birding and hiking.
- The size of Waterloo Recreation Area is significant for its proximity to regional population centers and is enhanced by the adjacent Pinckney Recreation Area. The recreation areas offer an “up north” feel in southeast lower Michigan due to their combined land mass and natural features.
- The recreation area is connected to the Phyllis Haehnle Memorial Sanctuary, a popular viewing area for thousands of sandhill cranes staging for migration.
- The recreation area has several important partnerships, including the Michigan United Conservation Clubs, which operates the Cedar Lake group camp outdoor center under contract, and three active Friends groups, including the Waterloo Natural History Association, the Waterloo Horsemen’s Association and the Potawatomi Mountain Biking Association.

- Due to its opportunities, several organizations are associated with the recreation area and are located nearby, including the Waterloo Hunt Club, the Waterloo Farm Museum and a private equestrian campground which accesses the park’s extensive equestrian trail system.
- A horseback riding stable concession opportunity has historically provide horseback riding recreation experiences to visitors within the recreation area.
- Multiple lakes provide a variety of boating access opportunities for motorized and non-motorized watercraft.
- There are designated Natural Beauty Roads within the Waterloo Recreation Area.
- Waterloo Recreation Area is important to the conservation of Michigan’s biological diversity. The recreation area leads the state park system in number of occurrences of high-quality natural communities/ecosystems (37), number of protected and rare plant species (21) and number of rare animal species (33). These include one federal threatened plant and three federal endangered animals.



A child participates in the Nature Awaits program



A rider enjoying the DTE Energy trail

2.2. Management Zones

The Phase 2 GMP planning team reviewed the zoning map developed in the Phase 1 GMP and recommended a few changes be made. Since the phase 1 plan was approved, more accurate mapping of DNR ownership has occurred through improved technology. As a result, the team discovered that some properties were inadvertently not zoned in 2012. In these situations, property not zoned was generally zoned to be consistent with the nearest zoned property. Some minor adjustments were also made on the former Cassidy prison property and to accommodate existing trails. A condensed review of the management zones, along with the zoning map, follows. A thorough description of each management zone can be found in the Phase 1 GMP.

- Primitive Zone comprises 9,602 acres, or 47.7%, and reflects a desired condition that emphasizes the natural resources. The allowance of recreational uses should depend on attaining and maintaining a high-quality natural resource condition. This zone also includes the northern unit that is managed for wildlife through a Memorandum of Understanding with the DNR Wildlife Division.
- Backcountry Zone comprises 8,773 acres, or 43.6%, and emphasizes resource quality over recreation, but allows for modification of landscape to allow for moderate levels of active recreation uses. Most of the park's extensive trail system is located in this zone.
- Natural Resource Recreation Zone comprises 795 acres, or 3.9% and permits active recreation with medium to high density of use conducted in natural areas. There is still an emphasis on resource quality over recreation, but in this zone, higher levels of use are allowed.
- Developed Recreation Zone comprises 924 acres, or 4.6%, and allows active recreation with high density of use conducted in areas not designated for natural resource significance. In this zone, recreation dominates with natural resource attributes enhanced as possible. The park's modern campgrounds, day-use beaches, boat launch sites, riding stables, visitor center and parking areas are found in this zone.
- Visitor Services Zone comprises 31 acres, or 0.15%, and encompasses those areas required for program administration and operations. This zone includes the headquarters office, contact station, and maintenance facilities that support the business of running a state park.
- Scenic Overlay Zone comprises 78 acres, or 0.39% and recognizes that there are aesthetic qualities to be preserved and protected in the park. While there are many such scenic areas, those identified during the planning process and noted on the management zone plan are at high points in the central portion of the park.
- Cultural Landscape Overlay Zone comprises 293.7 acres, or 1.5% and addresses the overall setting in which is found not only historic structures, but also non-structural evidence of the traditions, beliefs, practices, lifeways, arts, crafts and social institutions of any community.

2.3. Changes Since Phase 1 General Management Plan

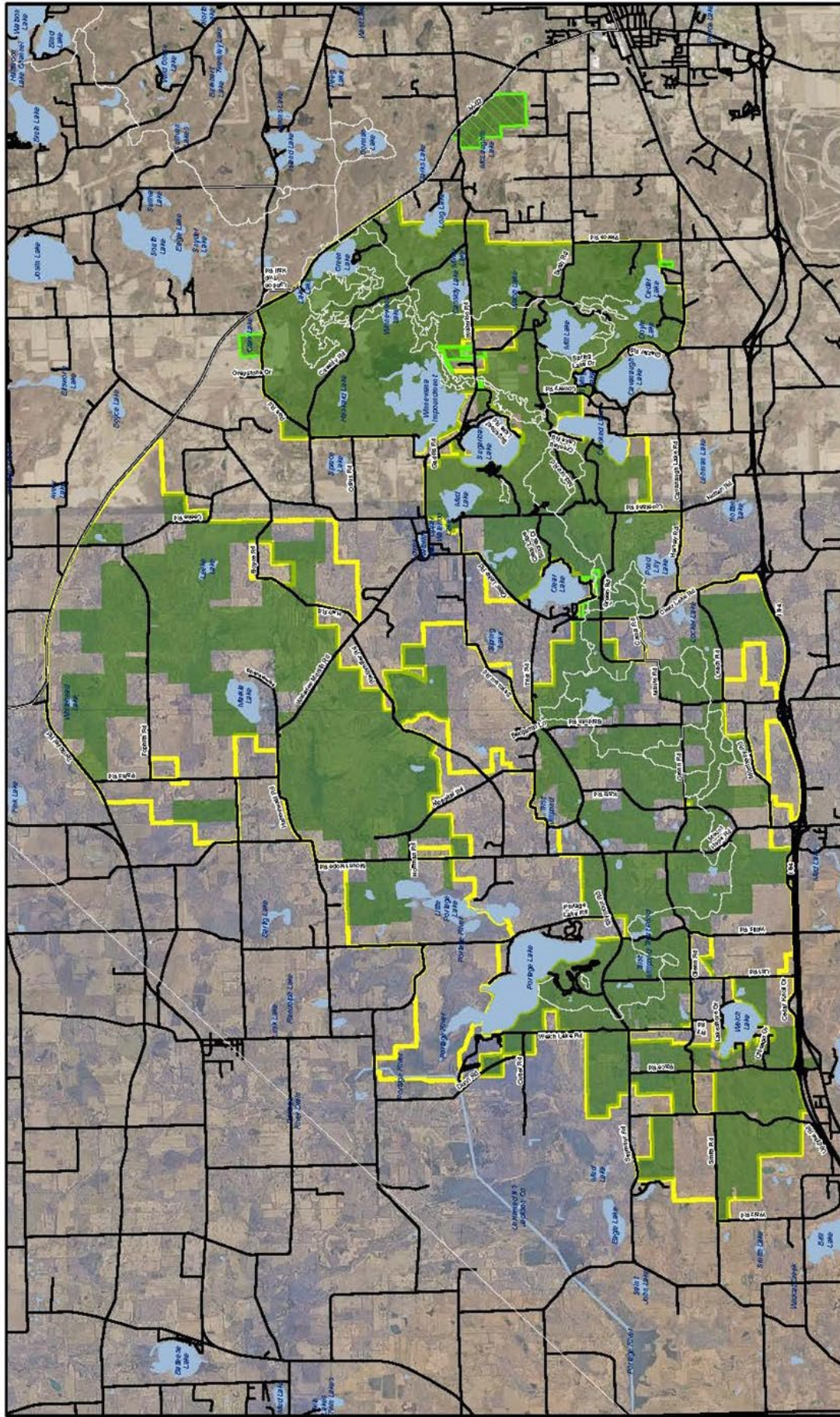
Infrastructure Improvements/Planning

The following projects have been completed since the original Phase 1 GMP was approved in 2012:

- (2016) Candidate Conservation Agreement With Assurances (CCAA) Enrollment for Eastern massasauga rattlesnake
- (2016) Track Chair purchased
- (2016) Discovery Center Natural Play Area
- (2017) DTE Energy Foundation Mountain Bike Trail System
- (2018) Mill Lake B Unit cabin restoration
- (2018) Loveland Road equestrian staging area pavilion
- (2019) DTE Energy Foundation Mountain Bike Trail System parking areas
- (2019) Mud Lake day use area removal
- (2019) Maute Road equestrian staging area development
- (2021) Tiny house rental unit at Sugarloaf Campground
- (2022) Maute Road equestrian staging area pavilion
- (2023) Cassidy Prison site closure and reversion to DNR ownership
- (2024) Aggregate Industry property reclamation
- (2024) Border-to-Border Trail construction along M-52.
- (2024) Two tiny house rentals at Sugarloaf Campground
- (2024) Portage Lake day use area paving
- (2024) Sugarloaf Campground waterline replacement & water treatment
- (2024) Equestrian trail switchback repairs

Project Boundary

A project boundary is a geographic area reflecting the future desired park boundary and may not follow the existing park boundary. The DNR has an interest in acquiring property within this boundary on a willing seller/ willing buyer basis in order to better align the park with the DNR mission. The planning team reviewed and concurred with the 2020 project boundary which was determined through a statewide effort with input from the public and review by the Natural Resources Commission. Some minor revisions were made to the 2020 project boundary for Waterloo Recreation Area to improve accuracy with boundary data.



Waterloo State Recreation Area Park Boundary

- Waterfowl Recreation Area Boundary
- 2020 Project Boundary as approved by the Director
- Recommended to be added to Project Boundary
- Roads
- Lakes and Rivers
- Trails

MICHIGAN DEPARTMENT OF NATURAL RESOURCES
PARKS AND RECREATION DIVISION

Updated: 10/02/2024 by A. Ihnken

0 0.6 1.2 1.8 Miles

*A project boundary is a geographic area in which the DNR is seeking to acquire property that supports the mission of the DNR on a willing buyer/willing seller basis, approved by the Natural Resources Commission in 2020

2.4. Supporting Analysis Updates

A complete supporting analysis is included in the Phase 1 GMP. Below are updates or additional information to supplement data provided in 2012 and provide context to this park planning process.

Demographics

Waterloo State Recreation Area lies in both Jackson and Washtenaw counties. According to the U.S. Census Bureau, the population in Jackson County has remained relatively stable over the last ten years, with approximately 160,000 persons recorded in both the 2010 and 2020 census. However, there has been an estimated decline in population of 0.6% from 2020 to 2023. In contrast, the population of Washtenaw County grew from 344,791 in 2010 to 372,258 in 2020. However, it too has shown a slight decline in population between 2020 and 2023. The population density of both counties is higher than the state average, indicating a need to continue to protect land for open space and recreation.

The population of the region has shown an increase in diversity over the last ten years, with a growth of Asian and Hispanic residents.

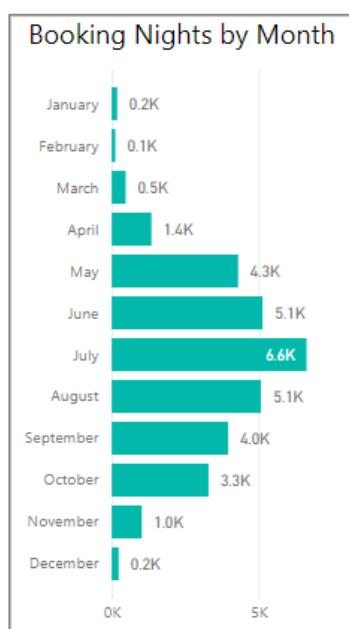
Park Use Numbers

Camper numbers, from 2019 onwards, are derived from reservation nights and the number of campers per site self-reported in the reservation system. In 2010, the camper numbers were derived from reservations using a standard multiplier. Camp nights have generally held steady over the last fourteen years.

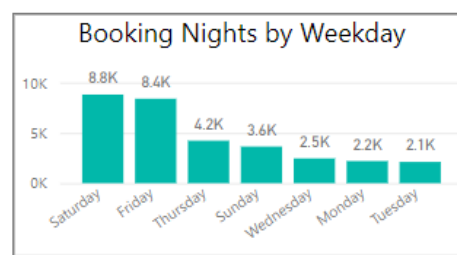
Camp Nights and Campers 2010-2023

	2010	2019	2020*	2021	2022	2023
Camp nights	30,055	24,486	22,812	31,797	30,537	30,980
Campers	87,159	87,169	71,821	96,095	81,175	79,348

*Impacted by closures due to COVID 19



Booking nights by Month, 2022



Booking nights by Weekday, 2022

Day-use visits are estimated based on car counts and a standard multiplier of 3.7. For 2022 onwards, an additional number was added estimating those entering the park by bike or foot. It is hard to estimate day-use numbers in a park of this size with multiple access points but reported numbers have doubled from around a half-million in 2010 to an estimated one million visits in 2023.

Leases, Concessions and Operating Agreements

The park relies on several partners for the operations and maintenance of the park and park programs. The following are descriptions of the partnership agreements associated with the park.

- The DNR Parks and Recreation Division has a lease agreement with the Aggregate Industries for the excavation of sand and gravel. The Lease expired March 9, 2024 and the company is in the process of reclamation of the property into park land for recreation consistent with the surrounding land use in the park.
- The DNR Parks and Recreation Division has a lease agreement with the Michigan United Conservation Clubs (MUCC) for the operation and maintenance of the Cedar Lake Outdoor Center which is used by them for youth summer camp programs. The lease is in place through October 31, 2077.

The following concession contracts are currently in place at Waterloo Recreation Area. These contracts are competitively bid every 7 years.

- Farming Contract – Expires 11/30/2024 (The Department plans to re-forest the area and will not rebid)
- Beach and Campground Store
- Horseback Riding Stable (currently vacant)

Commercial Operating agreements

- Chelsea Area Fire Authority – Rukon Trailblazer for use on the DTE Energy Foundation Mountain Bike Trail
- Farmlane Campground LLC – use of the equestrian trail system
- Potawatomi Mountain Biking Association – Waterloo Mountain Bike Trail Operating Agreement
- Washtenaw County Parks and Recreation – Monument on Border-to-Border Trail
- Numerous camper rental, boat delivery/retrieval companies.

Event Agreements

- Epic Races (Epic Open Water Swim, Tri Goddess Triathlon, Battle of Waterloo)
- RF Events (DTE Bonfyre Run)
- Potawatomi Mountain Biking Association (PMBA Triple Trail Challenge)

Cooperative Agreements and Memorandums of Agreement:

- Waterloo Horsemen's Association
- DNR Parks and Recreation Division and DNR Wildlife Division Memorandum of Understanding for management of northern unit of the park.

Historic and Cultural Resources

According to the 2021 Historic Structure Report there are two National Register eligible districts and three individual eligible buildings at Waterloo.

- Mill Lake ODC – eligible historic district
- Cedar Lake OCE – eligible historic district
- Burns Frontier Cabin #1 (Tag# 80835) – individually eligible building
- South Fork Cabin (Tag# 80852) – Individually eligible building
- Research Fish Station (Tag# 81533) – Individually eligible building

Portions of this recreation area may be sensitive for the presence of archaeological resources. To date, no systematic archaeological survey has been conducted to inventory resources, presenting a data gap. Despite this data gap, sixteen historic period and eleven precontact period archaeological sites are already known within the recreation area. Except for those publicly interpreted, the DNR does not publicly release archaeological locations to protect their integrity, pursuant to the associated state FOIA exemption. On all state-owned land and bottomlands, it is illegal to collect artifacts or other antiquities without a permit from the Michigan History Center.

The recreation area is in the aboriginal territory of the Anishinaabek (Odawa/Ottawa, Ojibwe/Chippewa, and Bodéwadmi/Potawatomi) and Wyandot tribal nations. These lands were ceded to the federal government in the 1807 Treaty of Detroit. The DNR consults with federally recognized tribes regarding actions that have the potential to impact Indigenous historic and cultural resources.

The park manager and planner review proposed projects with the department's historical architect and archaeologists so that negative impacts to significant historic and cultural resources can be avoided.

Metal Detecting

Metal detecting is recognized as a legitimate recreational activity when it is conducted in ways that do not damage natural and cultural resources nor violate state law. Metal detecting is only allowed in designated areas posted online by the DNR. Any items found must be reviewed by park staff and may be retained for further investigation. Areas located within campgrounds are limited to registered campers only. It is illegal to remove historic artifacts and other antiquities from state-owned land and bottomlands without an archaeology permit from the Michigan History Center.

Water Recreation

The park's lakes offer a variety of fishing opportunities. The lakes host a high diversity of up to 30 different warmwater fish species. Fish typically targeted by anglers include largemouth and smallmouth bass, black and white crappie, bluegill, redear sunfish, northern pike, yellow perch, bowfin, pumpkinseed, rock bass, green sunfish, black and brown bullhead, white sucker, and warmouth. Smaller forage fish species that are found within the lakes include banded killifish, blackchin and blacknose shiner, blackstripe topminnow, bluntnose minnow, brook silverside, emerald and golden shiner, grass pickerel, Iowa and johnny darter, lake chubsucker, mimic and spotfin shiner, and rainbow darter.

Education and Interpretation

Situated with a view of Mill Lake, the Gerald E. Eddy Discovery Center provides educational and interpretive services for visitors of all ages. The center focuses on the geology, habitats and recreation opportunities that are located within the park. There is a large interactive map in the center's main room that illustrates the trails, campgrounds and other recreational opportunities available throughout the recreation area. Facing the lake is a bird observatory with natural songbird habitat and feeders. There are also taxidermy exhibits that represent wildlife and habitat types found in the park including hardwood swamp, oak-hickory forest, bog, beech-maple forest and emergent marsh. The center also has a large collection of Native American stone tools that were donated by a local family; this collection is currently off exhibit and being reviewed for Native American Graves Protection and Repatriation Act (NAGPRA) compliance. Additionally, the Eddy Center has an auditorium and a classroom that are both used for education programming purposes. Eddy Center interpretive staff provide interpretive and education programming for the public and for K-12 school groups year-round. Interpretive programs are run at Sugarloaf and Portage Lake campgrounds from Memorial Day to Labor Day. Fishing and Archery programs are prioritized and occur twice weekly.

Legal Mandates

Legal mandates that impact Waterloo Recreation Area have been updated and are included in Appendix A of this plan for reference.

Common Fauna

Animal populations within the park are typical of the region. Common animals include deer, rabbit, fox, raccoon, opossum, squirrels, and coyotes. Avian species include swans, snow and blue geese, Canada geese, mallards, black ducks, blue wing teal, wood ducks, bitterns, great blue herons, black terns, coot, egrets, pheasant, turkey, ravens, crows, red winged blackbirds, and a number of songbird species. One bird of note is the sandhill crane, which attracts bird watchers from all across the nation to the park. As many as 2,000 sandhill cranes have been spotted in a field at one time at Waterloo. Unfortunately, many domestic animals, such as dogs and cats, have been abandoned in the park and are now part of the habitat.

Rare Element Occurrences

Waterloo Recreation Area has 12 state endangered animals, 4 state threatened animals, 16 state special concern animals and one species believed to be extirpated. Two species are federal endangered and one federal threatened.

Animal		State	Federal
Blanchard's cricket frog	<i>Acris blanchardi</i>	T	
Corylus dagger moth	<i>Acronicta falcula</i>	SC	
Grasshopper sparrow	<i>Ammodramus savannarum</i>	SC	
American bittern	<i>Botaurus lentiginosus</i>	SC	
Swamp metalmark	<i>Calephelis mutica</i>	E	
Henslow's sparrow	<i>Centronyx henslowii</i>	E	
Marsh wren	<i>Cistothorus palustris</i>	SC	
Spotted turtle	<i>Clemmys guttata</i>	T	
Least shrew	<i>Cryptotis parva</i>	T	
Leafhopper	<i>Dorydiella kansana</i>	SC	
Blanding's turtle	<i>Emydoidea blandingii</i>	SC	
Leafhopper	<i>Flexamia reflexa</i>	T	
Common gallinule	<i>Gallinula galeata</i>	T	
Least bittern	<i>Ixobrychus exilis</i>	T	
Spotted gar	<i>Lepisosteus oculatus</i>	SC	
Pickereel frog	<i>Lithobates palustris</i>	SC	
Little brown bat	<i>Myotis lucifugus</i>	T	
Northern long-eared bat	<i>Myotis septentrionalis</i>	T	LE
Indiana bat	<i>Myotis sodalis</i>	E	LE
Tamarack tree cricket	<i>Oecanthus laricis</i>	SC	
Gray ratsnake	<i>Pantherophis spiloides</i>	SC	
Blazing star borer	<i>Papaipema beeriana</i>	SC	
Louisiana waterthrush	<i>Parkesia motacilla</i>	T	
King rail	<i>Rallus elegans</i>	E	
Cerulean warbler	<i>Setophaga cerulea</i>	T	
Hooded warbler	<i>Setophaga citrina</i>	SC	
Eastern massasauga	<i>Sistrurus catenatus</i>	T	LT
Regal fritillary	<i>Speyeria idalia</i>	X	
Dickcissel	<i>Spiza americana</i>	SC	
Eastern box turtle	<i>Terrapene carolina carolina</i>	T	
Paper pondshell	<i>Utterbackia imbecillis</i>	SC	
Trumpet vallyonia	<i>Vallonia parvula</i>	SC	
Flat dome	<i>Ventridens suppressus</i>	SC	

T = Threatened, E = Endangered, SC = Special Concern, X = Exemplary community

Waterloo Recreation Area has 5 state endangered plants, 10 state threatened plants and 6 state special concern plants. There is one Federal threatened plant.

Plant		State	Federal
-------	--	-------	---------

Hairy angelica	Angelica venenosa	SC	
Purple milkweed	Asclepias purpurascens	T	
Panicled screwstem	Bartonia paniculata	T	
Side-oats grama grass	Bouteloua curtipendula	E	
Sedge	Carex seorsa	T	
American chestnut	Castanea dentata	E	
White lady slipper	Cypripedium candidum	T	
Hay-scented fern	Dennstaedtia punctilobula	E	
Creeping whitlow grass	Draba reptans	T	
Horsetail spike rush	Eleocharis equisetoides	SC	
Whiskered sunflower	Helianthus hirsutus	SC	
Goldenseal	Hydrastis canadensis	T	
Whorled pogonia	Isotria verticillata	T	
Northern prostrate clubmoss	Lycopodiella margueritae	T	
Northern appressed clubmoss	Lycopodiella subappressa	SC	
Ginseng	Panax quinquefolius	T	
Orange- or yellow-fringed orchid	Platanthera ciliaris	E	
Prairie white-fringed orchid	Platanthera leucophaea	E	LT
Prairie dropseed	Sporobolus heterolepis	SC	
Clinton's bulrush	Trichophorum clintonii	SC	
Wild rice	Zizania aquatica	T	

T = Threatened, E = Endangered, SC = Special Concern, X = Exemplary community, LT = Listed Threatened

Waterloo Recreation Area has 39 occurrences of seven different natural communities that are of sufficient quality to be considered element occurrences by the Michigan Natural Features Inventory (MNFI).

Natural Community	State Rank	Federal/Global Rank
Bog	S4	G3G5
Dry Sand Prairie	S2	G3
Dry Southern Forest	S3	G4
Dry-mesic Southern Forest	S3	G4
Emergent Marsh	S4	GU
Inundated Shrub Swamp	S3	G4
Poor Conifer Swamp	S4	G4
Poor Fen	S3	G3
Prairie Fen	S3	G3
Rich Conifer Swamp	S3	G4
Southern Hardwood Swamp	S3	G3
Southern Wet Meadow	S3	G4
Wet Prairie	S1	G3
Wet-mesic Prairie	S1	G2

G = Global, S = state rank: U = undetermined, 1 = critically imperiled, 2 = imperiled, 3 = vulnerable, 4 = apparently secure, 5 = secure

Climate Adaptation

The following anticipated climate impacts and vulnerabilities have been identified that could impact recreation and park infrastructure at Waterloo Recreation Area. *Source: Fourth National Climate Assessment (2018) – Northwest. www.adaptationworkbook.org/explore-impacts.*

- Temperatures in the Midwest are projected to increase by 5.6 to 9.5F by the end of the century (2071-2100).
- The frequency and intensity of heat waves is expected to increase across the Midwest by the middle of the century (2036-2065).
- The frequency and intensity of cold waves is expected to decrease across the Midwest by the middle of the century (2036-2065).
- Drought risk is expected to increase across the Midwest by the end of the century.
- Climate conditions will increase fire risks in the Midwest by the end of the century.
- Average annual precipitation is projected to increase slightly across the Midwest over the next century.
- The frequency of intense precipitation will continue to increase across the Midwest under climate change.
- The annual frost-free season is expected to increase by roughly 30 days in the Midwest by the end of the century.
- Climate change will amplify many existing stressors to forest ecosystems in the Midwest, such as invasive species, insect pests and pathogens, and disturbance regimes.
- Surface water temperatures are expected to rise due to warming air temperatures and will cause decreased seasonal mixing of inland lakes, reducing lake dissolved oxygen levels.

Some of the potential impacts of the changes to park use and management include:

- Extended use season, which could have both benefits in terms of revenue and challenges in terms of staffing.
- Less snow could result in a shortened use season for winter activities, such as snowmobiling, cross-country skiing and fat tire biking.
- Shoreline/ trail erosion
- Flooding due to increased precipitation/high waters
- More insect pests impacting visitors and vegetation
- Increased frequency and intensity of storms
- Higher temperatures affecting visitor comfort and safety, desire to be close to and access to the water and higher demands on electricity for camper cooling systems.

A variety of adaptation strategies, approaches and tactics will be considered to address these impacts in both the short- and long-term park management and development decisions. Approaches include:

- Resistance: Improving defenses against change and disturbance to retain a relatively unchanged condition
- Resilience: Accommodating some degree of change to allow return to prior condition following disturbance
- Transition: Intentionally facilitating change to align a system to new conditions.

3. 10–Year Action Plan

The actions proposed for Waterloo Recreation Area have been developed by the planning team in response to stakeholder and public input and in context of the core values and guiding resources discussed in the Phase 1 GMP. The actions for Waterloo Recreation Area generally focus on improving the park’s infrastructure, protecting the park’s natural and cultural resources and improving interpretive and education opportunities. In addition, actions also focus on trail improvements, plans for the former Cassidy Prison site and equestrian campground improvements. These actions are supported by the recommendations of the major planning efforts guiding recreation in Michigan, including the Michigan Statewide Comprehensive Outdoor Recreation Plan (SCORP).

The planning team has developed 10-year actions that it believes are necessary to guide management and development within the designated management zones to achieve the desired user experience. Actions are categorized under two types: Management and Operations or Infrastructure and Development, which is further broken down to small projects and capital outlay projects. These categories align with the PRD Strategic Plan as well as the annual Capital Outlay funding process. Actions are recommended to address the following criteria:

- Natural resources
- Cultural resources
- Recreation opportunities
- Education/interpretation opportunities
- Management focus
- Development

A separate draft Natural Resource Stewardship Plan is in the process of being updated to identify conservation targets, goals and threats to those conservation targets for the park. The Stewardship Plan will also identify and define strategies to reach the goals for Waterloo Recreation Area.

Management plans are based on known needs, funding realities and sound investment policies, but do not guarantee future PRD funding to achieve the actions identified. PRD will seek internal funding, alternative funding sources, partnerships and other potential mechanisms for implementing the desired future conditions defined in this plan. On an annual basis, PRD districts determine priorities for project planning and project capital outlay. Each district’s top projects are then evaluated at a state-wide level for available funds.

As future improvements are evaluated, resiliency, sustainability, and efficiency will be considered. Specifically, at Waterloo Recreation Area, opportunities may exist to incorporate sustainable trail management practices and alternative energy solutions.

The following 10-year actions are categorized in terms of priority based on health, safety, and welfare, as well as ease of implementation (cost, ability to implement with own staff, partnerships, etc.). Priority Level 1 projects indicate those that should be addressed within the next 2 years. Priority Level 2 projects include those that should be addressed within 2-5 years. Priority Level 3 projects are desired, but can be tackled in the next 5-10 years, once funding has been identified. The “Program Input From” column identifies the project coordinators for each action with a project lead identified in bold. Opinion of probable costs have

been developed for each capital outlay action identified (see Appendix C) and these projects will be included in the statewide master project list.

Management and Operations

Action	Priority	Management Zone	Program Input From
Review of proposed ground disturbing and other projects having potential to impact cultural resources.	Ongoing	All	Park Supervisor Field Planner MHC-Archaeology Historical Architect
Ensure archaeological collection held at the Eddy Discovery Center is NAGPRA compliant and plan appropriate disposition and treatment.	1	Developed Recreation	Marketing and Outreach MHC-Archaeology
Revise management agreement between Wildlife Division and Parks and Recreation Division to clarify each division's responsibility at the park.	1	All	Stewardship Unit Manager Wildlife Biologist
Update Wildlife Conservation Order to open the former Cassidy Prison site to hunting and clarify the boundaries of hunting areas around the Portage Lake Campground.	1	Developed Recreation	Unit Supervisor Policy Specialist
Continue to update wildfire safety plan.	Annually	All	Park Supervisor Fire Supervisor Fire Officer Stewardship Ecologist
Continue to update Wildlife Division workplans.	Annually	All	Stewardship Ecologist Wildlife Biologist
Continue to acquire property within the project boundary to consolidate ownership.	Ongoing	All	Land Liaison Park Supervisor
Work with resource managers to identify and resolve trespass issues and mark park boundaries.	Ongoing	All	Unit Supervisor Land Liaison
Control invasive species in coordination with the park's stewardship plan.	Ongoing	All	Stewardship Ecologist
Finalize the draft natural resource Stewardship Plan for the park, identifying targets for conservation and related natural resource management strategies, including specific invasive species management actions.	1	All	Stewardship Ecologist

Infrastructure and Development: Capital Outlay Projects

Action	Priority	Management Zone	Program Input From
Resurface Sugarloaf and Portage Campground playgrounds. (ARPA)	1	Developed Recreation	Field Planner
Replace Portage Lake fishing pier. (ARPA)	1	Developed Recreation	Field Planner
Renovate Eddy Discovery Center including building infrastructure and exhibits. (ARPA)	1	Developed Recreation	Field Planner Park Interpreter
Following community input and strong public support, develop former Cassidy Prison site to include a multi-use parking area, hike-in campsites with access from the Pinckney-Waterloo Trail and carry-down boat access.	1	Developed Recreation Natural Resource Recreation	Field Planner Unit Supervisor
Improve equestrian stables and rebid concessionaire contract.	1	Developed Recreation	Lease Specialist Unit Supervisor
Conduct a feasibility/impact study to evaluate improvements to existing equestrian campground, including adding electricity to some sites, and implement recommendations.	2	Developed Recreation	Field Planner Unit Supervisor Horseman's Association
Improve Mill Lake lodge building to support additional education/interpretive opportunities for school groups and professional development.	3	Developed Recreation	Field Planner Unit Supervisor Park Interpreter Historical Architect
Design and construct new park headquarters where a residence was once located on east side of Clear Lake Road, 0.2 miles south of Green Road.	3	Developed Recreation	Field Planner Unit Supervisor
Implement Phase 2 of the park roads and parking lots resurfacing project.	3	All	Field Planner

ARPA – American Rescue Plan Act

Infrastructure and Development: Small Projects

Action	Priority	Management Zone	Program Input From
Revise equestrian trail maps and wayfinding signage to improve trail usability.	1	All	Unit Supervisor Trail Specialist Promotions Specialist
Renovate and market trail between Mill Lake complex and the Eddy Discovery Center.	1	Primitive Developed Recreation	Unit Supervisor Park Interpreter Stewardship
Action	Priority	Management Zone	Program Input From

Install an ADA accessible hunting blind within the park.	2	All	Unit Supervisor Field Planner Volunteer Specialist Wildlife Biologist
Develop master plan for Mill Lake complex, incorporating reuse of the dining lodge and cabins	2	Developed Recreation	Unit Supervisor Field Planner Historic Architect
Reforest farmland west of DTE Trail parking lot.	3	Backcountry	Stewardship Restoration Specialist
Explore beach access improvements at Mill Lake.	3	Developed Recreation	Unit Supervisor Field Planner Stewardship
Resolve Pinckney Waterloo trail erosion and drainage issues.	Ongoing	Backcountry	Unit Supervisor Field Planner Trail Specialist

Partnership Projects

Action	Priority	Management Zone	Program Input From
Develop a mountain bike trail loop and beginner skills course in the old gravel pit site previously identified by Potawatomi Mountain Bike Association with a connection to the DTE mountain bike trail system.	2	Backcountry	Mountain Bike Association Unit Supervisor Field Planner
Collaborate with local partners to upgrade and expand the Portage Lake Disc Golf Course, enhancing the overall user experience, increasing accessibility, and supporting recreational tourism in the area. Improvements may include updated signage, new course features, and maintenance of existing infrastructure.	2	Developed Recreation	Unit Supervisor Local Partners Field Planner
Explore connecting the park's equestrian trails to the Lakelands Trail and Pinckney Recreation Area.	3	All	Trail Specialist Horseman's Association
Develop an equestrian trail loop at Green and Loveland Road once mine reclamation is complete. Trail alignment to be determined in coordination with DNR.	3	Natural Resource Recreation	Trail Specialist Horseman's Association Stewardship
Work to improve public transportation options to the park from urban centers.	3	All	Unit Supervisor WAVE ISD
Action	Priority	Management Zone	Program Input From
Explore paving Bush Road from Pierce Road to Discovery Center driveway	3	All	Unit Supervisor Road Commission

Explore paving Loveland Road from Clear Lake Road to Sugarloaf campground entrance.	3	All	Unit Supervisor Road Commission
---	---	-----	---

WAVE = Washtenaw Area Value Express

ISD= Intermediate School District



Campers gather outside their camper

4. Implementation Strategy

This chapter of the GMP provides guidance for implementation of the actions and maintaining the plan so it remains relevant in the long term. These guidelines will also help the park align the actions with park, district,

and statewide annual funding processes and annual tasks outlined in the PRD's Strategic Plan or other planning documents. Although the implementation of the GMP will require commitment from staff at every level, it will be the primary responsibility of the Unit Supervisor/Manager to oversee plan implementation.

A long-range plan such as this must maintain a degree of flexibility in order to be responsive to changing circumstances or opportunities that cannot be foreseen. The planning team recognizes that some actions may be accomplished in a short time frame, while others may carry over through multiple years. It will be important to track progress so that the plan remains a relevant park management tool. The GMP will be reviewed every five years to ensure it remains viable.

All proposed changes in the park should be reviewed to ensure they are in compliance with the approved management zones.

4.1. Implementation Toolbox

The following is a list of items to consider when reviewing and prioritizing the implementation of actions identified in the GMP.

Coordination/ Communication

- Meet regularly with Regional Field Planner and District Supervisor to coordinate and prioritize large capital projects for capital outlay requests.
- Maintain an open dialogue with local partners and stakeholders to coordinate community-related projects as identified in the actions.
- Follow-up regularly on progress for actions that are not the primary responsibility of the Unit Supervisor/Manager with the responsible program position.

Funding

- Estimated costs for capital outlay projects are included in the Opinion of Probable costs section. These costs will be refined and adjusted by the Regional Field Planner as designs and studies are completed.
- Identify potential funding sources for each project/task. Liaise with partners and PRD grants coordinator as appropriate.
- Align potential funding sources with the annual capital outlay funding requests.
- Request District Small Project funding through the District Supervisor for small projects identified in the 10-year actions.

Scheduling

- Further prioritize projects based on need, funding, staffing and other constraints and opportunities.
- Incorporate project/task assignments into annual staff performance objectives.

4.2. Documentation of Changes

The Unit Supervisor/Manager should keep a record of any major changes to the park since approval of the GMP and note potential updates that may be required in the future. Documenting these changes will assist in the 5-year plan review or when the GMP is updated. Changes may include:

- New user requests or conflicts
- Emerging recreation, funding or partnership opportunities
- Changes in land management
- Land transactions or changes to the Approved Project Boundary
- Major infrastructure projects or removal of structures

Changes may be documented by marking up the park's copy of the GMP or maintaining a log that is kept with the GMP. In reviewing the actions for changes, document actions that may become irrelevant or are no longer viable, as well as proposed new actions, including justification.

The park zoning is intended to be a long-term document. Changes will only be considered with adequate justification and are subject to a formal review and approval process.

4.3. Documentation of Accomplishments

As actions are completed, the Unit Supervisor/Manager should mark them as such in the park's copy of the GMP, including the completion date. This will also help to maintain a log of accomplishments for district and division-wide reporting purposes, including PRD's strategic plan.

4.4. Five-year Review Process

General management plans are reviewed every five years from the date of approval of either the Phase 2 plan or the complete GMP. The planning team for the 5-year review is made up of the Park Management Plan Administrator, Unit Supervisor/Manager, Regional Field Planner, and District Supervisor, with other team members included as may be necessary. A 5-Year Review Form will be used to record all changes to the plan within the past 5 years. Upon reviewing the GMP and the documented changes, the planning team will determine whether the changes warrant a complete update of the plan.

If there are no major changes required in either the zoning or the actions, the planning team will complete the 5-Year Review Form and attach it as a supplement to the existing GMP. If zoning changes are needed, the GMP will be revised or updated following the established planning process led by the Park Management Plan Administrator. If changes to the actions only are required, the Phase 2 GMP planning process will be implemented.

APPENDIX A – LEGAL MANDATES UPDATE

For all park general management plans, legal mandates are identified that serve to further guide the development of the general management plan and subsequent action plans. For our planning purposes, the term “Legal Mandates” refers not only to federal and state law, but also the administrative tools of “Policy” and “Directive” of the Natural Resource Commission, the Department, and the Parks & Recreation Division. Examples include Orders of the Director, Park and Recreation Areas State Land Rules and all other laws, commission orders, and rules or directives that apply to the park.

Legal Mandates were listed in the phase 1 plan. However, due to omissions and updates, a complete updated list of legal mandates impacting Waterloo Recreation Area follows.

FEDERAL STATUTE

ENDANGERED SPECIES ACT, 1973
This Act authorizes the determination and listing of species as endangered and threatened, and prohibits unauthorized taking, possession, sale and transport of endangered species
BALD AND GOLDEN EAGLE PROTECTION ACT, 1940 AND AMENDMENTS
This Act prohibits anyone, without a permit issued by the Secretary of the Interior, from "taking" bald eagles, including their parts, nests, or eggs. The Act defines "take" as "pursue, shoot, shoot at, poison, wound, kill, capture, trap, collect, molest or disturb." “Disturb” includes actions that may result in injury to the eagle, a decrease in its productivity or nest abandonment.
NATIONAL HISTORIC PRESERVATION ACT, 1966 AS AMENDED
This is the primary federal law governing the preservation of cultural and historic resources in the United States. The law establishes a national preservation program and a system of procedural protections which encourage the identification and protection of cultural and historic resources of national, state, tribal and local significance. Projects that receive federal support in any form may be subject to compliance with Section 106 of the NHPA to ensure that impacts on historic properties are considered and that any adverse effects are avoided, minimized or mitigated.
NATIVE AMERICAN GRAVES PROTECTION AND REPATRIATION ACT, 1990 AS AMENDED
This Act governs the return of Native American remains, funerary objects, sacred objects, and objects of cultural patrimony to lineal descendants, culturally affiliated Indian Tribes, and Native Hawaiian organizations. NAGPRA also defines penalties for non-compliance and provides protection against Native American grave desecration.

STATE STATUTE

Natural Resources and Environmental Protection Act (NREPA) and Amendments

<p>PA 451 of 1994, Part 5</p>	<p>Gives the DNR authority to make rules to support its mission. This includes State Land Rules, Land Use Orders, Wildlife Conservation Orders, Fisheries Orders and Watercraft Control.</p>
<p>PA 451 of 1994, Part 31 Water Resources Protection</p>	<p>Provides authority to EGLE to require a permit for any occupation, construction, filling, or grade change within the 100-year floodplain of a river, stream, drain, or inland lake.</p>
<p>PA 451 of 1994, Part 301 Inland Lakes and Streams</p>	<p>Requires a permit from the state (EGLE) to undertake certain activities relating to inland lakes and streams, such as dredging, fill, marinas, structures, alteration of flow, etc.</p>
<p>PA 451 of 1994, Part 303 Wetlands Protection</p>	<p>Requires a permit from the state (EGLE) to undertake certain activities in regulated wetlands, such as, dredging, fill, construction or drainage.</p>
<p>PA 451 of 1994, Part 315 Dam Safety</p>	<p>A permit is required for dams with a dam “height” of six feet or more and that have a surface area of five acres or more at the design flood elevation. A permit is required for new dam construction, enlargement of an existing dam or impoundment, dam repair, dam alteration, dam removal, dam abandonment, or reconstruction of a failed dam.</p>
<p>PA 451 of 1994, Part 351 Endangered Species Protection</p>	<p>The law governs those acts necessary for the conservation, protection, restoration and propagation of endangered and threatened species of fish, wildlife and plants in cooperation with the Federal Government.</p>
<p>PA 451 of 1994, Part 419 Hunting Area Control</p>	<p>Section 324.41901 establishes the powers of the Department to establish safety zones for hunting.</p>
<p>PA 451 of 1994, Part 741 State Park System</p>	<p>The department shall create, maintain, operate, promote, and make available for public use and enjoyment a system of state parks to preserve and protect Michigan's significant natural resources and areas of natural beauty or historic significance, to provide open space for public recreation, and to provide an opportunity to understand Michigan's natural resources and the need to protect and manage those resources.</p>
<p>PA 35 of 2010, Part 741 Recreation Passport</p>	<p>This act amended the Michigan Motor Vehicle Code to provide for a State Park and State-operated public boating access site “Recreation Passport” that a Michigan resident may obtain by paying an additional fee when registering a motor vehicle.</p>

<p>PA 451 of 1994, Part 761 Aboriginal Records and Antiquities</p>	<p>The state reserves the exclusive right and privilege to all aboriginal records and other antiquities including those found on the bottomlands of the Great Lakes. A permit must be obtained prior to undertaking any archaeological investigation on state land. Applications for permits are available through the Michigan History Center-DNR.</p>
---	---

Public Health Code

<p>PA 368 of 1978, Part 125, Campgrounds, Swimming Areas and Swimmers' Itch</p>	<p>Established to protect and promote the public health by establishing health code requirements and regulations that all public (including DNR) and private campgrounds must meet. Includes permitting, licensing, inspections and rules regarding sanitation, safety standards and public health. Also covers testing and evaluating quality of water at bathing beaches, safety and rescue equipment.</p>
--	--

ORDERS

The following Orders apply to Waterloo Recreation Area.

Land Use Orders of the Director

5.1 State parks and recreation areas, certain conduct prohibited.

Order 5.1 A person shall not do any of the following in any state park (SP) or recreation area (RA):

(1) Have more than one horse for each registered camper at any designated horsemen’s campground without first obtaining proper written permission from the department. (a) There must be at least one horse registered to a camper per campsite in order to camp at the following equestrian campgrounds within a SP or RA:

(vi) Waterloo RA from May 1 through October 31.

5.4 Watercraft use in certain state parks, prohibited conduct.

Order 5.4 A person shall not do the following:

(2) Operate a vessel powered by any motor, except an electric motor, on any of the following described waters:

(a) Waterloo RA - mill lake.

5.12 Certain state parks and recreation areas, requirements for use, certain conduct prohibited.

Order 5.12 The following conduct shall apply to use of Michigan SPs and RAs:

(11) Waterloo RA, prohibited conduct. A person shall not do the following at the Waterloo RA:

- (a) Enter into a pen area or buffer zone around a pen area established by the department from June 10 to July 15 for the temporary holding of geese. This prohibition shall not apply to a person issued a written permit by the district wildlife supervisor allowing entry into the area.
- (b) Operate a snowmobile on the DTE mountain bike trail without written permission from an authorized representative of the department.

5.16a Entry, use and occupancy of certain state parks, recreation areas and scenic sites, prohibited conduct.

Order 5.16a (1) A person shall not do any of the following:

- (a) Enter any of the following state-owned lands with a motor vehicle unless a valid Michigan recreation passport has been purchased and affixed to the vehicle:

(89) Waterloo RA, lands in Jackson and Washtenaw counties, with the exception of section 2, 3, 11, 12, 13, 14, 15, 21, 22, 23, 24, 27, 28, 29, T1S, R2E, Jackson county.

Wildlife Conservation Orders

Wildlife is owned by all the people of the state of Michigan, and protection is administered and managed by the Michigan DNR. Hunting and trapping regulations including methods of take, bag limits, license quotas, and season dates are established by the Natural Resources Commission (NRC) and are described in the Wildlife Conservation Orders.

7.52 Waterloo recreation area; area closed to hunting; unlawful acts; exceptions; posting required.

Sec. 7.52 (1) It shall be unlawful to take any animal within the Waterloo recreation area on the stateowned lands in section 3 lying south of Bush road and west of Pierce road; all lands in section 4 lying south of Bush road and McClure road; all lands in section 5 south of McClure road, east of Ridge road, and east of Glazier road; all lands in sections 8 and 9 and the W 1/2 of the W 1/2 of section 10 lying west of Pierce road with the exception of waterfowl hunting during the regular waterfowl season on Cedar lake and Doyle lake, all in T2S R3E, Sylvan township, commonly known as the Mill-Cedar lake area; that part of the E 1/2 of section 33, west of Cassidy lake road, north of Waterloo road and east and north of the outlet stream from Cassidy lake; that part of the NW 1/4 of section 34, west of Cassidy road and north of Waterloo road, T1S R3E, Lyndon township, commonly known as the Cassidy lake area, Washtenaw county; all lands in section 2 and the NE 1/4 of the NW 1/4 of section 11, lying north of Seymour road, T2S R1E, Leoni township, Jackson county; all lands in section 31, T1S R2E, and section 6, T2S R2E, Waterloo township, Jackson county, bounded on the south by Seymour road, on the east by Portage creek and Big Portage lake, on the north by Big Portage lake, and on the west by a line described as commencing at the intersection of Seymour road and the entrance road to Big Portage lake public use area in the SW 1/4 of the SE 1/4, section 6, then northerly along said entrance road to the approximate center of the SE 1/4 of

the NW 1/4 of section 6; westerly along old campground road to the turn near the west line of the SE 1/4 of the NW 1/4 of section 6, northerly along old road meandering through middle of the NW 1/4 to the north line of section 6, northeasterly along old road and a projection of same to the border of Big Portage lake in the SE 1/4 of the SW 1/4 of section 31, T1S R2E. (2) A person shall not take any waterfowl from September 1 to September 15 within 450 feet of any boat launch, campground, beach, parking area, or picnic area in the high use areas at Green, Sugarloaf, Big Portage, and Crooked lakes. (3) Signs containing the hunting closure shall be posted in such a manner and at such locations as will provide reasonable notice of the closure to the public.

History: Eff. Mar 31, 1989; Am. 16, 1989, Eff. Aug 1, 1989; Am. 2, 2016, Eff. April 15, 2016; Am. 2, 2021, Eff. Mar. 12, 2021

State Land Rules

Parks and Recreation Areas – State Land Rules are issued by authority conferred on the Michigan DNR by Section 504 of 1994 PA 451 MCL 324.504. The rules cover entry, use and occupation of state lands and unlawful acts.

APPENDIX B – STAKEHOLDER AND PUBLIC INPUT SUMMARY

Over the duration of the Phase 2 General Management Plan development process, the planning team ensured a variety of opportunities for stakeholder and public input and feedback.

Cassidy Prison Site Stakeholder Meeting

A stakeholder meeting was held on January 18, 2024, at the Eddy Discovery Center, 1 to 3pm, to guide future use of the former Cassidy Prison site recently acquired by the park. Twenty-four stakeholder groups were invited to the meeting.

A total of 12 participants represented government and non-profit organizations from around the region. The meeting began with a short presentation of the history and features of the site, including sideboards to maintain the site within the context of Waterloo Recreation area, followed by the input exercise. The meeting concluded by outlining the next steps of the planning process including how this information will be used to develop actions in the Phase 2 General Management Plan update.

Input gathered at the meeting is listed below:

STRENGTHS

- Cassidy Lake
- Mirror Lake
- Natural resources

CHALLENGES

- Limited parking along Waterloo Rd for Cassidy Lake access
- Lake management – aquatic weeds

OPPORTUNITIES

- Improved lake access
- Keep Mirror Lake natural and preserved
- Rustic campsites/backcountry sites connected to the Pinckney-Waterloo Trail
- Trailhead for Pickney Waterloo Trail and DTE trails
- Keep rustic/natural look from road
- Adaptive mountain bike trail for persons with disabilities
- Mountain bike skills course
- Beginner/family friendly mountain bike loop
- Winter activities (cross-country skiing)
- Osprey nest platform (formerly nested on a light pole which was removed)
- Reforest along road frontages

- Keep it rustic/ low impact

Other Comments and Questions:

- There is potential to hook back up to the township sewer, however, infrastructure is due to be removed in the near future.
- Have there been any Eastern massasauga sightings on the property? *None that have been recorded.*
- Is the property open to hunting? *DNR staff will check the Wildlife Conservation Order to confirm.*
- Is there a budget for site development? *Not at this time.*
- Why is the area south of Cassidy Lake designated as primitive? *Due to the presence of wetlands.*
- Eastern Massasauga restrictions on Waterloo Recreation Area as a whole go too far and includes land not conducive to EMR.

Planning Team Attendees:

Matt Lincoln (Park Planner/Land Liaison), Debbie Jensen (Management Plan Administrator) Joe Strach (Regional Field Planner), Gary Jones (Rose Lake District Supervisor), Matt Schweda (Park Supervisor), Sage Hegdal (Southeast Lower Peninsula Trail Specialist)

Stakeholder Meeting Attendees

Name	Stakeholder Affiliation
Chad Simpson	Waterloo Horsemen’s Association
Jeff Hardcastle	Huron Waterloo Pathways Initiative
Gary Slegrist	Jackson Audubon Society
Match Bray	MiBike
John Heller	BSA Troop 476
Carl Loomis	Potawatomi Mountain Bike Association
Chris Ritter	Waterloo Horsemen’s Association
A Krueger	Washtenaw County Parks
Will Dew	Sugarloaf Lake/ Lyndon Township
Brian Lynn	BSA Troop 476
Mike Balhorn	Potawatomi Mountain Bike Association
Amy Scharmen	Equestrian Trail Subcommittee/ MTAC

Stakeholder Meeting

A stakeholder meeting was held on July 30, 2024, at the Eddy Discovery Center, 2:00pm, to guide the phase 2 general management plan for Waterloo Recreation Area. Participants were invited to provide their input, identifying strengths, challenges and opportunities related to the park. A total of 19 participants represented government, schools, and non-profit organizations from around the region. The meeting began with a short presentation of the phase 1 general management plan that was completed in 2012 and a review of the planning process for this phase 2 plan. Input gathered at the meeting is listed below:

STRENGTHS

Location

- Close to universities
- Rural but close to population
- Location-draw from other states

Public Opportunities

- Balance of accessibility
 - balances with natural
 - different experiences
- Education opportunities (natural history)
- Discovery Center
- Variety of recreational opportunities

Wildlife/Nature

- Primitive nature
- Diverse habitat for wildlife
- Critical to watershed
- Most ecologically diverse → Black spruce, bog
- Size/natural land
- Terrain/elevation change
- Preserving wilderness aspect (roads etc.)

Trails

- Waterloo-Pinckney Trail
- DTE Trail – big draw
- Diversity on trails → water trails, scenic, nature

CHALLENGES

Ownership

- Private in holdings
- Trespassing

Trails

- Erosion on trails due to changes in elevation
 - Reroutes are hard because of CCAA
- Multi-use designations on some trails are misleading

Natural Resources

- Invasive species
- Lack of fish stocking
- Preserving nature – consider all user groups.

Hunting

- Expanded gun season conflicts with hikers and others

Facilities

- Equestrian Campground no electricity, uneven terrain
 - Amenities don't match trail experience
 - Not central to trails
- Exhibits and Visitors Center building needs updating
 - Limited size of auditorium, poor water
 - Not enough staff, restrooms
- Pressure for development (single use)

Location

- Accessibility from urban areas/disadvantaged populations
 - No public transportation

OPPORTUNITIES

Management

- Fire management
- Connection/understanding of watershed/water quality protection

Trails

- Sustainable trail improvements
- Expanded trails that are more accessible (e.g. Around Mill Lake)
- Adaptive bike trail

Ownership

- Land acquisition

Collaborations and Partnerships

- Connectivity to other public lands
- Collaborating with local transportation
- Expand partnerships with schools throughout the county

- Professional development with park
- More exposure to school groups
- Improve awareness
- Expand outdoor skills/education at Cassidy Lake
 - Improve habitat
 - Spur trail to backpacker's camp
- Collaboration with other organizations for stewardship activities/education
- Boat cleaning stations/AIS education

Land Use

- Maudy Lake Rd. → EQ Campground?
- Ag. Industries → EQ Campground?
- Disc golf at Cassidy Lake property
 - Designed for modern use (leagues in the area)

Additional Meeting Notes

- Attendee raised a good question acknowledging that years from now staff and visitors will perish, but Waterloo will still be here. So, “What is best for Waterloo?”

Planning Team Attendees: Matt Lincoln (Park Planner/Land Liaison), Debbie Jensen (Management Plan Administrator), Matt Schweda (Park Supervisor 4), Shane Morse (Rose Lake District Supervisor), Michelle Lupenski (Park Supervisor 2), Ray Fahlsing (Stewardship Unit Manager), Sage Hegdal (Southeast Lower Peninsula Trail Specialist), Chuck Dennison (Pinckney Supervisor), Shane Crawford (Forester); Denny Tison (Wildlife Biologist); Bill Hodges (Interpreter)

Name	Stakeholder Affiliation
Paul Feeny	A3Disc Club (Disc Golf)
Patrick Muldoon	Chelsea Parks and Recreation Commission
Amy Sharman	ETS MTAC
Thomas Hodgson	WNHA
Brandy Miller	ETS
Mike Balhorn	Poto MBA
Kira Macyda	Washtenaw County Parks
Chance Mikkelson	A3Disc Club
Arlene Taylor	Waterloo Hunt Club

Kate Laramie	Huron River Watershed Council
Naomi Norman	Washtenaw Intermediate School District
LouAnn Eder	WHNA
Chad Simpson	WHA
Doug Lance	Waterloo Township
Carl Loomis	Poto MBA
Jeffrey Hillman	Michigan Senate: Office of Senator Shink
Michelle Marin	City of Chelsea
Meg Gower	WNHA
Sally Stommer	Waterloo Hunt Club

Tribal Outreach

The department’s tribal liaison reached out to the twelve federally recognized tribes in Michigan with the following letter notifying them of the GMP process and timeline and inviting input. No comments were received.

Dear Tribal Leaders:

The Parks and Recreation Division (PRD) of the Department of Natural Resources (DNR) is in the process of updating the Phase 2 General Management Plan (GMP) for Waterloo Recreation Area located just east of Jackson in Jackson and Livingston Counties.

Waterloo Recreation Area is the largest state park in the Lower Peninsula and home to a diverse array of camping opportunities, 11 inland lakes, an expansive trail system, a visitor center, and excellent fishing and hunting opportunities. It’s 20,000 acres of rolling woodlands and wetlands is home to abundant flora and fauna.

The DNR uses general management plans (GMPs) to define a long-range planning and management strategy that will protect the natural, cultural and historic resources of the site, while considering education and recreation opportunities. A planning team, representing various specialties within the DNR, has been established and is meeting regularly to develop the GMP for this site.

The planning process includes several opportunities for input, including a stakeholder meeting scheduled for Tuesday, July 30 from 2-4pm at the Gerald E. Eddy Discovery Center, 17030 Bush Road, Chelsea, Michigan 48118 to get input from organizations with an interest in the park. In addition, the draft plan will be available for review and comment prior to adoption anticipated in spring 2025.

For additional information on our management plan process, please visit our website at www.michigan.gov/parkmanagementplans

We would like to give the Tribes the opportunity to meet with us to discuss the management plan process and any thoughts you may have in relation to Waterloo Recreation Area. You are also welcome to send a representative to the July 30 stakeholder meeting. Please Mr. Matt Lincoln, PRD Management Plan Assistant, at lincolnm@michigan.gov if you have any questions or would like to arrange a separate meeting.

For additional information on our management plan process, please visit our website at www.michigan.gov/parkmanagementplans.

If you have any additional questions, please do not hesitate to contact Matt Lincoln or myself.

Sincerely,

Craig Brunet

*Legislative & Legal Affairs Office, Tribal Liaison
Executive Division, Michigan Department of Natural Resources
Constitutional Hall, 525 West Allegan Street
P.O. Box 30028
Phone: 517.331-5350
Fax: 517.335.4242
brunetc@michigan.gov*

Public Meeting and Online Survey

A public meeting was held at Eddy Discovery Center on January 22, 2025 at 5:30pm to review the draft Phase 2 General Management Plan and comment on the draft 10-year actions. The phase 2 plan was also posted on the DNR's website and comments were invited via e-mail and an online survey. A press release was issued 3 weeks in advance of the meeting to 19,944 recipients via the government-delivery system, including 38 stakeholders associated with the park. A total of 159 participants attended the meeting and 1,261 participants took the online survey.

The press release for the meeting, analytics gathered at the meeting, a list of attendees, comments received, as well as on-line survey results are provided in the following pages.

Jan. 6, 2025

Contact: [Matt Lincoln](mailto:Matt.Lincoln@Michigan.gov), 517-881-3492

Share your input on Waterloo Recreation Area planning via public meeting or online review



Those interested in long-term planning for Waterloo Recreation Area in Jackson and Washtenaw counties are invited to attend a public meeting later this month or review and comment on the plan online.

The Michigan Department of Natural Resources uses general management plans to define long-range planning and management strategies that protect the

resources of state parks, while addressing recreation and education needs and opportunities.

Meeting details, online review

The DNR-hosted meeting will give people the chance to learn about the new draft Phase 2 general management plan, proposed improvements and planning process, followed by time for feedback and questions with DNR staff.

The meeting will take place 5:30-7 p.m. Wednesday, Jan. 22 at the Eddy Discovery Center, located at 17030 Bush Road in Chelsea, inside the park.

For those who can't attend the meeting, a copy of the draft plan is available on the project website and comments will be accepted through Jan. 24. Find links at Michigan.gov/Waterloo.

Additional info

Waterloo Recreation Area is located in southern Michigan, just east of Jackson. The park is home to two seasonal modern campgrounds, rustic and modern cabins, boating access sites, rustic camping opportunities, 80-plus miles of trails, including 21 miles of equestrian trails, 10 miles of mountain bike trails and the Waterloo Pinckney hiking trail. The park is also home to the Gerald Eddy Discovery Center, which offers interpretive education opportunities that explore the park's geology and diverse natural habitats.

Comments and questions about the park, draft plan and meeting also can be shared via email with Matt Lincoln, DNR Parks and Recreation Division land specialist, at LincolnM@Michigan.gov.

Additional information on the DNR's general management planning process is available at Michigan.gov/ParkManagementPlans.

The public meeting began with a presentation of the primary components of the phase 1 GMP approved in 2013 and the action plan proposed in this phase 2 GMP. The presentation was followed by a brief question and answer period.

Participants were given several optional methods to express their comments, thoughts, and opinions. These methods included “sticky notes” for affixing comments directly onto the presentation boards, stickers for prioritizing their top actions, and a comment sheet. Two copies of the complete draft plan were available to attendees during the meeting for review.

Public Meeting Attendees

Jon Bentley	Thomas Hosford	Jose Gareia
Barry Snellgrove	Eric Wolf	Debbie Trune
Tom Boyer	Karen Usher	Mitch Bray
Eric Brust	Devan Desmond	Joe Miller
Dawn Desmond	Anna Feeny	Eric Lindstrom
Paul Feeny	Venny Miller	Brenda Freshcora
Susan Dieterlen	Kate Wallau	Robyn Cleveland
Mary Cornell	Robb Silvers	Mandy Kellogg
David Walsh	Jerrold Sandel	Tim Fedullo
Brian Dewey	Stephanie Connolly	Tim Labreche
Nancy Siegel	Ed Blissick	Thomas Pinos
Dave Peatsun	Ben Sajeushi	Karea Davis
Sharon Koch	Will Dew	Harvey Davis
Patrick Lyndon	Patrick Muldoon	Justin Schette
Dan Sparks-Jackson	Aaron Bebee	Carrie Schette
John Tincher	Brett Harris	Dalten Schette
Todd Gillindon	B. Vanderploeg	Margan Bayer
Gerald Wing	Sandy Mills	Kerry Holmes
Laura Zang	Rebecca Slevert	Erica Cheesman
Carl Loomis	Charity Steere	Jeff Cheeseman
Emily Orefia	Bill Steere	Becky Ostwald
Brad Scott	Cheryl Dobos	Steve Ostwald
Paul Whitmore	Cathy Upton	Scott Merchant
Steve Owsinshki	Steve Trosin	Jacob hurt
Renee Herdon	Jake Glauser	Cindy Lance
Jessica Martell	Karala Richman	Kylie Kohut
Brad Martell	Tim Kramer	Peyton Kohut
Dave Siegel	Dave Wesner	Mark Kohut
Jon Cook	Zach Kadykowski	Don Starky
S. Palmer	Chris Neindorf	David Hauck
Bill Wells	Beth Trollman	Gabrielle Bowles
Robert Stedtfeld	Cole Phillips	Madonna Perkins
Brian McLaughlin	Chris Maloney	Sallie Reene
Matt Laux	Billee Deil	Kim A. R
Jane Hill	Steve Jarant	Todd Wiseman

Pam Wiseman
Austen Bates
Brad Aarfier
Chad Kinch
Chrissy Norris
Sue Shink
Don Walz
Jeff Tomment
Sally Tommen
Paul Brown
Tracie Waters
Chad Lee
Pei Huang
Morgan Morton
Maggie Sadler
Greg Sadler
Matt Dobas
David Dragun

Jim Hurt
Timm Appleton
Shannon Lester Pelham
Josh Pelham
Mike Balhorn
Sharon Honck
William Bujak
Mr. & Mrs. D. Cable
Kim Winter
Kristi Misiak
Andrew Herrst
Amanda Looney
Tom Keene
Karen Keene
Joe Anerson
Sue Olson
Ben Rowllisan
Jeff Rogers

Jason Aric Jones
Chris Mannor
Keegan Rodgers
Wayne Ablers
Donna Rohde
Jeff Heilen
Jill Girbach
Noah Ford
H. Salnac
Bill Richardson
Cynthia Richardson
Tracie Hafleil
Laurie Sutherland
Doug Jackson
Chad Simpson
David Rohde
Chis Ritter
Sandy Beaubier

Planning Team Attendees

Matt Schweda
Matt Lincoln
Debbie Jensen
Shane Morse

Joe Strach
Ray Fahlsing
Sage Hegdal
Tom Jakkola

Cullen Knoblauch
Zach O'Dell
Michelle Lupenski

Questions and Answers

The following are questions and comments taken from the public attending the meeting on January 22, 2025:

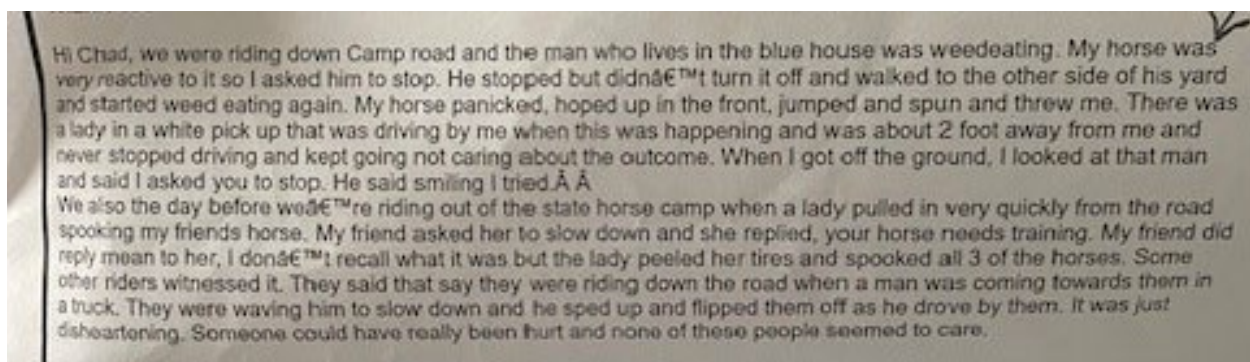
1. There are a lot of horse people. Support for developing the Maute Road equestrian campground and keeping the existing campground.
2. What was the thought process to remove the existing campground?
 - a. We haven't made a decision to close the existing campground. Data analysis if a new campground is opened will determine the need to keep the existing campground
3. An alternative campground group or friends group could operate the Maute Road equestrian campground.
4. The new Maute Road equestrian campground would put the private equestrian campground out of business. Expand the existing equestrian campground instead of building a new one.
5. The new Maute Road equestrian campground will concentrate more horses in that area of the park. There are already sufficient other uses on that side of the park.
6. Who are the top three stakeholders? How influential are they? These stakeholders should have no more influence than the public.
 - a. Stakeholders are not ranked. You are correct, they do not have any more influence than the public which is why we're holding this meeting.
7. Was a study completed on the potential use beyond this group for the semi-modern equestrian campground? Equestrian events have been difficult to draw equestrians on large numbers.
 - a. No study has been performed.

8. Are there plans to build more mountain bike trails?
 - a. At this time, the plan is to follow the DTE masterplan and develop within the old gravel pit as outlined in the draft plan.
9. Michigan Senator Sue Shink introduced herself and noted many neighbors have concerns about the semi-modern campground and potential to disturb adjacent neighbors. DNR should have additional discussions on this issue.
10. Jason Aric Jones noted support for a mountain bike skills area located next to Roe Road. He also advocated support for disc golf.
11. Mountain bikes don't have a separate non-motorized passport for funding trail improvements. This effort needs further legislative support similar to the equestrians.
12. There are lots of tax monies spent on mountain bike trail rescue.
13. Support for adding campground electrical to the existing equestrian campground.
14. What is the process to review the comments raised tonight and finish the phase two management plan?
 - a. The planning team will meet and go through all comments collected and revise the plan accordingly.
15. What is the date/timeline to finalize the phase two management plan?
 - a. We hope to have the plan finalized by Spring, 2025.
16. Maute Road has a natural beauty (Michigan Scenic Road) designation. How can development take place?
 - a. Development is not planned to occur along the road.
17. Support for semi-modern equestrian campground for Cassidy Lake property.
18. Consider impact on residents regarding future equestrian campground location.
19. Why is the DNR planning on spending a million dollars for a new park HQ building/location?
 - a. The current building is inadequate and outdated. It is also difficult to access for the public and not centrally located. A new headquarters would improve efficiency and management for the park
20. Why not spend those monies on expanding the Eddy Discovery Center?
 - a. The Discovery Center is in the process of being renovated.
21. What is the cost of running electric to the current equestrian campground? Isn't it more efficient to build a new equestrian campground?
 - a. \$50,000. Initially, the cost was higher than building new, but we will look at it again.
22. Support for wayfinding signs for the mountain bike trails. These signs would be very useful for new MB riders.
23. What is the zoning ordinance for float planes flying onto bodies of water/ state land?
 - a. No DNR orders prevent float planes from landing. Consult with local municipalities.
24. A concern for public input over user groups.
25. Regarding the proposed Maute Road equestrian campground, there's currently much erosion on the existing equestrian trails. A new campground will bring greater trail erosion.
26. Exactly where will the Maute Road equestrian campground be located?
 - a. In the back, behind the staging area and trees located near the road.

Written Comments

- Develop a world-class disc golf course in the area. A3 club would partially fund the endeavor (6)
- Better + more signage on mountain bike trails please. A man got a heart attack on a trail last year and the EMT couldn't find him within 30 minutes and he died. Better wayfinding for EMT's and mountain bikes as well.

- #1 Bike permits to help pay for the disbursement of maintenance on trails. #2 Allocate money for improved revenue for fun rescues for horse and mountain bikers. #3 Over planting some crops instead of harvests bush road and roe road.
- Mountain bike trails at the old prison site would be great for continuing development for everyone from beginners to more advanced riders.
- Partner with Waterloo Area Historical Society for educational programs
- Matt did a wonderful job of running the meeting
- Worried about the increased horse traffic on our trail system
- Consider using 30 acres of 300 acres at Green and Loveland Rd for new horse campground (3)
- I disagree with the thought process behind adding a new modern horse camp at Maute. It wont make us a destination people think of when they think of a great horse trail system. We don't have the miles. We already have two horse campgrounds and while they're on the edge, they are located hear the types of trails people want to travel for. Maute Rd. is near flatter trails. I and others love camping at the existing campgrounds and would love to see DNR support things like fixing trail erosion or looking into connecting to Lakelands Trail and Pinckney trails. Thank you.
- Why was there no public meeting concerning the future of the 290 acre Green/Loveland road land acquisition before buildings were taken down? We were told this summer that the DNR was going to use those buildings for storage of equipment so the equipment was more centrally located. Now the 4 buildings are gone. People think that if a new horse campground is being build, certainly you can carve out 30 acres from the 290 acre site to build it there, then we would not be at this meeting complaining about Maute Rd. location. That 290 acre site is down the road from Maute Rd. site and it is right on the horse trails.
- As a member of the Waterloo Horsemans Club, I have many concerns about the proposed development at Maute Road staging area. We surveyed our membership and residents wo live in the area and there is strong opposition to a developed campground. The impact on the neighborhood, trails and natural beauty roads would be severely impacted by large parties, competitions and traffic.
- Developing the current riding stables is also not acceptable for the same reasons as above.
- Improve the existing horse campground instead of developing new
- We lose the kids {loop} trail if you close down the horseman's camp and it will be too far for beginners to ride to and for campers that camp rustic to teach youngsters about camping rustic.



Waterloo Recreation Area Meeting Concerning Proposed Equestrian Camp on Maute Rd.

01/22/2025

1 – Occupancy rates of either the DNR Equestrian campground or the private Farm Lane Equestrian campground do not seem that high, except for a couple of holiday weekends per year for the DNR campground and holiday weekends, prime spring riding weekends, or a few special events at the Farm Lane campground. The WHA leadership is selling the point of unless we have a 1st class facility with plenty of amenity's occupancy won't change, using Brown County, Indiana, and a few other facilities as an example. The problem with that scenario is that Brown County has something Waterloo doesn't have, 70 miles of equestrian trails to our 21 miles. So, it would make sense that Waterloo would need to double or triple the miles of equestrian trails to compete, since horse trail riders come to trail ride. It would make sense to accomplish a plan for additional trail miles before spending a substantial amount of money to build a camp that may not even be in the right location for where the additional trails end up.

2 – A campground at the Maute Rd. staging area just adds additional traffic to the already busiest section of equestrian trails. Between the riding stable, which you are looking to reopen, local riders with farms nearby, and the Waterloo Hunt Club adding the campground to the mix will add much more use to these trails. At least with the campgrounds, DNR & Farm Lane, farther to the east as they currently are, a certain percentage of riders never make it over to the western trails, which balances usage out better.

3 – Additionally, you need to factor in the trail and road usage by other users. The hiking groups hold 2 – 3 competitions per year that impact the trails in question and there are, at least, 2 – 3 bike races per year that come right down Glenn and Maute roads, with probably 1/3 or more of those bikes turning around right at the Maute staging area site and heading back to Portage or making a 2nd loop around the same course.

4 – Then we get into a couple of other factors. 1st you have the family-owned small business Equestrian campground, Farm Lane, that was started with community and equestrian support. Why does the DNR want to go in competition with a small private entity and most likely hurt that business or potentially put it right out of business? 2nd there is the fact that starting with Jim O'Brien, the last 4 Park Managers have either in public meeting, in writing, or in private conversations stated again and again that there are no plans for a permanent equestrian campground at the Maute Rd. Staging area. The local residents, farm owners, & other stake holders feel like they were misled concerning this matter.

In conclusion, my wife, Sharon and I have ridden these trails for 50 plus years, camped here before we moved here and now have lived right here for 33 yrs. We have a had good working relationship with the park management for those 33 years and have volunteered and completed every type of work from trail clearing, to major trail repairs and updates during that time.

To whom it may concern:

I am writing in regard to the proposal for the conversion of the current equestrian staging area on Maute Road in the Waterloo Recreation Area into a full hook up equestrian campground. My husband and I purchased property in 2020 on the east side of Maute road, just south of the proposed campground location. A large part of why we bought the property is the tranquility of the area and minimal traffic on Maute Road. We are currently building a home and will be moving in soon with our two small children.

As we have been coming to and from our property, we have had multiple negative interactions with individuals riding horses on the road. My husband and I both drive well below the speed limit and always slow down when we come upon horses. Despite this, horseback riders continue to tell us to slow down. Once, a rider pulled his horse in front of my car to force me to stop, then told me to slow down. Once again, I was driving under the speed limit at the time. My husband had an incident when he was slowly passing a group of riders and his brakes squeaked as he was passing, which caused one of the horses to buck its rider off. When we utilize the trails in the area, there is extensive damage to the trail system due to horses. Horses startle even when you come upon them walking on the trails. It is also apparent that some riders are intoxicated while riding. It is clear that some people are riding horses which are not adequately trained to be safe on the roads or trails, and are not practicing safe riding principles.

Our priorities are the safety of our children and the peace of our home. If there was a campground already located on Maute Road, we would not have purchased our property. We strongly oppose the development of a campground on Maute Road, as it would decrease the safety and peace of the neighborhood. It would also decrease our property value. Increased traffic on the road and trails in that specific area would also impact us negatively. If the DNR is looking to increase revenue with a new campground, we would welcome a discussion of how that could be achieved without the negative impacts to the Maute Road neighborhood.

Thank you for your time, and please contact us if you have questions.

DNR,

The neighbors along Maute Rd and Camp Rd have had many unsafe and unpleasant experiences with the horse riders from the Maute Rd parking area. We do not want a new horse campground put in near us.

Many of these riders and their horses are inexperienced, some of these horses spook and bolt, and people have fallen off their horses, just at the sight of us neighbors mowing our lawns or doing our farming. The horse riders act entitled - they yell at us and expect us to stop our work (on our own private property) while they try to train their horse, they blame us for their horse problems. It is a farming area, there is heavy farm equipment on the roads, and farm equipment noise. This unsafe horse activity on the road occurs most every weekend during the warm weather. We neighbors are tired of it, and you only have a small parking area for horse trailers on Maute Rd now, don't increase this horseback riding traffic in our area by adding a new horse campground on Maute Rd.

It is the DNR's responsibility to address these horse safety issues because someone is going to get hurt, and we don't want to be involved. The DNR has invited these people in from out of the area, with their horse trailers and provides a place for them to park and go for a ride in our neighborhood. Then we have to deal with them and their unsafe horse incidents.

When confronting mounted trespassers, you encounter unbelievable rudeness. Several of us have been told that there is nothing we can do about it, as the horse and rider plan to be gone when law enforcement arrives. Some have told us that they are entitled to water their horses on our property, they trample our lawn and refuse to leave. And we have been at the receiving end of some very foul language from some of these groups of riders. There has been litter of beer cans and snack wrappers left by these riders, and one threatened the life of a neighbor's dog. Even trying to get out of our driveways and down the public road is a problem with the horseback riders, as they expect us to stay behind them the whole length of the road, rather than moving their horses off to the side. And if you try to go by them they yell and cannot control their horses - it is unsafe.

There needs to be a way for us to identify these people on their horses, so that we can call the DNR or law enforcement when there are these trespass and safety issues.

Meeting Exercise and Online Survey Results

Each meeting attendee was given 6 green dots to prioritize the actions they considered to be the most important. Red dots were also available to indicate an action that was opposed. The online survey also gave respondents the opportunity to prioritize their top six actions. The table below records the number of people prioritizing actions at the meeting in green and those prioritizing actions via the online survey in blue. The red numbers record how many people were opposed to the corresponding action at the meeting. Comments collected in opposition that were associated with the actions are also recorded.

Ten Year Actions - Management and Operations

Action	Priority	Management Zone	Priority Stickers/Comments
Inventory and catalog archaeological collections held at the Eddy Discovery Center and integrate into the exhibit renovations.	1	Developed Recreation	82
Revise management agreement between Wildlife Division and Parks and Recreation Division to clarify each division's responsibility at the park.	1	All	1, 81
Update Wildlife Conservation Order to open the former Cassidy Prison site to hunting and clarify the boundaries of hunting areas around the Portage Lake Campground.	1	Developed Recreation	4, 92 2
Continue to update wildfire safety plan.	Annually	All	4, 137
Continue to update Wildlife Division workplans.	Annually	All	1, 42
Continue to acquire property within the project boundary to consolidate ownership.	Ongoing	All	19, 382
Work with resource managers to identify and resolve trespass issues and mark park boundaries.	Ongoing	All	3, 94
Control invasive species in coordination with the park's stewardship plan.	Ongoing	All	13, 416
Finalize the draft natural resource Stewardship Plan for the park, identifying targets for conservation and related natural resource management strategies, including specific invasive species management actions.	1	All	3, 182

Ten Year Actions - Capital Outlay

Action	Priority	Management Zone	Priority Stickers/Comments
Resurface Sugarloaf and Portage Campground playgrounds. (ARPA)	1	Developed Recreation	2, 93
Replace Portage Lake fishing pier. (ARPA)	1	Developed Recreation	6, 118
Renovate Eddy Discovery Center including building infrastructure and exhibits. (ARPA)	1	Developed Recreation	2, 105
Improve equestrian stables and rebid concessionaire contract.	1	Developed Recreation	3, 153
Develop a semi-modern equestrian campground with electricity, dump station and water at either the Maute Road Staging Area or the stables and remove the existing equestrian campground.	2	Developed Recreation	2, 233 36, Market study required – should not be “build it and they will come’, Environmental impact study required, Additional EQ traffic is discordant with DNR’s priority to mitigate trail and Natural Beauty Rd. erosion. We feel strongly that other locations would work better, Consider Green & Loveland site.
Develop former Cassidy Prison site to include a multi-use parking area, hike-in campsites with access from the Pinckney Waterloo Trail and carry-down boat access.	3	Developed Recreation Natural Resource Recreation	17, 388 1, Carry down would be good ONLY. No more developed campgrounds. If considering mountain biking here, reference “hub” style layout of trails like Bentonville AR, or Duthie in Seattle, This would also be a great site for a shorter mtn bike trail or gathering spot for biking with pump track for kids and other mtn bike trails

Improve Mill Lake lodge building to support additional education/interpretive opportunities for school groups and professional development.	3	Developed Recreation	67
Design and construct new park headquarters at the Clear Lake Road and Green Road location.	3	Developed Recreation	1 61, New office should also include room for Wildlife Division staff. Current office is inadequate. Would foster cooperation between divisions
Implement Phase 2 of the park roads and parking lots resurfacing project.	3	All	89

ARPA = American Rescue Plan Act

Ten Year Actions - Small Projects

Action	Priority	Management Zone	Priority Stickers/Comments
Revise equestrian trail maps and wayfinding signage to improve trail usability.	1	All	6, 271 maps and signs on all trails should have some clear indication for emergency services to know where the party calling is located
Renovate and market trail between Mill Lake complex and the Eddy Discovery Center.	1	Primitive Developed Recreation	4, 71
Install an ADA accessible hunting blind within the park.	2	All	53
Develop master plan for Mill Lake complex, incorporating reuse of the dining lodge and cabins	2	Developed Recreation	64
Reforest farmland west of DTE Trail parking lot.	3	Backcountry	273
Explore beach access improvements at Mill Lake.	3	Developed Recreation	76
Resolve Pinckney Waterloo trail erosion and drainage issues.	Ongoing	Backcountry	647

Ten Year Actions – Partnership Projects

Action	Priority	Management Zone	Priority Stickers/Comments
Develop a mountain bike trail loop and beginner skills course in the old gravel pit site previously identified by Waterloo Mountain Bike Association.	2	Backcountry	31, 702, 1
Explore connecting the park's equestrian trails to the Lakelands Trail and Pinckney Recreation Area.	3	All	11, 265
Work to improve public transportation options to the park from urban centers.	3	All	2, 72, 1
Explore paving Bush Road to Discovery Center driveway	3	All	44, 3

WAVE = Washtenaw Area Value Express

ISD= Intermediate School District

Online survey participants were asked to suggest any ten-year actions that should be **added** to the list, if any, and explain why. The following are ten-year actions online survey participants suggested. The number next to each item indicates how many times it was suggested.

Interpretation/Education

- Host more activities for children and families at the Discovery Center
- Develop youth-focused hunting and fishing programs to attract families and educate the next generation about conservation and outdoor traditions.

Equestrian

- Add electric and water to existing equestrian campground before adding a new campground (12)
- Keep the existing equestrian campground open (10)
- Keep the current equestrian campground primitive after adding a full-service campground (7)
- Add a confidence arena for horses to get used to their riders (2)
- Add a horse beach
- Improve equestrian crossing of Camp Road
- Review current and projected use of a full-service equestrian campground including traffic studies before committing to it.
- Add electricity and water to Equestrian Campground
- Explore the addition of new equestrian trails around the gravel pit area

Trails

- Improve trails and connections to other parks/trails (3)
- Install standardized universal trail markers (3)
- More options for backcountry camping (backpacking) along Pinckney-Waterloo Trail (2)

- Designate some trails as “hike only” (2)
- Separate horse trails from other uses on the Pinckney-Waterloo Trail (2)
- Consider a birding-specific trail (2)
- Connect the campgrounds to the trail system
- Close trails to e-bikes
- Allow multi-use on all trails.
- Add a walking path around the Green Rd. pond that is currently being reclaimed and connect it to the Pinckney-Waterloo Trail
- Do not turn any more hiking trails into mountain bike trails
- More bike and pedestrian connections to the park

Disc Golf

- Add a world class disc golf course at the park or the Cassidy Prison site (57)
- Improve disc golf at Portage Lake (2)

Mountain Bike

- Add mountain bike trails to the Cassidy Prison site (42)
- Add more mountain bike trails (39)
- Enhanced mountain bike trail experiences including picnic areas, restrooms, art, rail-style jump park, more challenging trails, wash stations, bike repair stations (13)
- Maintain mountain bike trails (7)
- Close DTE Trails to hunting (3)
- Create a mountain bike permit to pay for maintenance and enhancements (2)
- Add a mountain bike path along Waterloo Rd from M-52 DTE trails to Bush Rd.
- More parking near the children’s (Green) mountain bike trail
- Mountain bike only trails
- Add overnight parking for hiking and mountain biking events
- Add shade trees to DTE trail parking lots

Roads

- Pave Loveland Road
- Work with road commission to install “share the road” signs
- Add a shuttle from I-96 to reduce traffic
- Pave Cassidy and Roe roads

Campgrounds and other Development

- Expand the Pines Campground or add more hike-in sites (4)
- Renovate campground restrooms and include dishwashing stations (2)
- Construct an amphitheater at Portage Lake campground for interpretive programs
- Add a dog park and playground at Portage Lake
- Improve Sugarloaf facilities including flooding issues
- Repair boardwalks and maintain existing infrastructure instead of adding new
- Update playgrounds
- Add wifi to campgrounds

- Add more paved sites
- Develop a sem-modern campground for everyone
- Add more drive-in rustic campgrounds
- Add a nature play area
- Consider adding dark-sky area
- Consider adding electric charging stations
- Market non-consumptive recreation opportunities at the park
- Reduce camping fees

Hunting/Wildlife Habitat

- Control Asian bittersweet vine invasive species (2)
- Protect orchids at Mill Lake
- Maintain the parking lot at Black Spruce Bog National Landmark and remove poison ivy
- Plant crops to improve and expand hunting opportunities
- Update the hunting sign posts
- Reintroduce small game species like pheasants and rabbits to provide more hunting opportunities for local hunters and wildlife enthusiasts.
- Control riparian invasive species
- Control horsefly population
- Improve waterfowl hunting areas
- Implement a large-scale, long-term deer cull plan to dramatically reduce the deer population to an ecologically sustainable level.
- Name the new lake formed by the gravel mine Byce Lake
- Enhance turkey habitats by improving land management practices, such as planting cover crops and establishing controlled feeding areas
- Improve fishing programs by stocking lakes with family-friendly fish species like trout or bluegill and adding accessible fishing piers or shoreline spots.
- Clean up Crooked Lake – it has milfoil problem
- Develop ways to make sure the water is cleaner for kayakers and swimmers

Cassidy

- Keep Cassidy area natural with parking for nearby trails. Keep it closed to hunting
- Add a full-service campground to Cassidy Prison site
- Restore Cassidy Prison site to an oak-prairie savannah and add some fishing piers
- Install a historical marker commemorating the WWII POW Encampment at Cassidy Prison
- Allow electric dirt bikes at Cassidy Prison site

Boating

- Add boating access sites (either rustic carry down or modern) for Little Portage Lake, Clear Lake, Spring lake, Long Lake, Clark Lake, or Markla Lake
- Reduce number of motorized boats on Portage Lake
- Repair boating access site on Doyle Lake
- Add public access for canoes/kayaks on Winnewana impoundment

Online survey participants were asked to suggest any ten-year actions that should be **removed** from the list, if any, and explain why. The following are ten-year actions online survey participants suggested. The number next to each item indicates how many times it was suggested.

Mountain Bikes

- No more bicycle infrastructure. They have enough and don't pay a licensing fee. (3)
- New bicycle infrastructure projects should be at the bottom of the list, other uses deserve time and attention
- Do not develop mountain bike trails at the old gravel pit site
- Reforesting land west of DTE parking lot should not be done until sufficient parking is developed near M-52 for events.

Roads & Parking

- Do not pave Bush Road (14)
- Remove paving roads and parking lot actions. Not necessary (8)
- I get nervous with new infrastructure because it will lead to more parking lots and paving
- No new parking lots

Hunting & Fishing

- No hunting (4)
- Minimize hunting access. Reduce guns and potential loss of life (2)
- Deemphasize hunting and fishing, which are dying.

Equestrian

- No new semi-modern equestrian campground. Not necessary and waste of money (53)
- Remove new equestrian campground at Maute Rd. Conflicts with neighbors, Congestion (21)
- No more equestrian developments! Not enough use of existing (18)
- Keep existing equestrian campground (16)
- Keep existing equestrian campground rustic if a new one is built (13)
- Remove new equestrian campground at Maute Rd or riding stables Too many conflicts with neighbors and congestion. (6)
- Reduce number of equestrian projects or bring park-wider use improvements in alignment (5)
- Do not close the existing equestrian campground. Evaluate it for alternate equestrian use if numbers do not improve after new campground is opened. (3)
- Keep existing equestrian campground and make it semi-modern (3)
- Remove updating riding stables. Make it a camping or cabin area instead
- Maute Rd should be a group campground only
- Do not revise equestrian trail maps

Trails

- Remove connecting equestrian trails to Lakelands Trail. Too much erosion (5)
- Don't mix bikes and equestrians (3)
- Do not allow horses on existing hiking trails (2)

- Any action that mixes mountain bike trails and equestrian trails – safety concerns

Cassidy

- Keep Cassidy Prison hunt-free (4)
- Keep Cassidy land as is (3)
- Cassidy site should be developed for activities, not parking

Other

- Remove new headquarters. Waste of money and will deteriorate already poor roads (10)
- No need for public transportation to the park from urban areas. Not enough interest to support and could increase vandalism, it shouldn't be DNR's job (6)
- Clear Lake Rd visitor center should be removed from list of actions
- Keep Waterloo Recreation Area recreation focused
- Remove the invasive species control. They're there for a reason.
- Remove beach access at Mill Lake...bad for plants and animals
- Concerned about adding more land when management of existing land is difficult

E-mailed Comments

During our in person discussion with Matt and Michelle, we expressed our concern regarding the wording for the 5th Loop trail in the draft plans. With the same wording appearing in the recently released Phase 2 General Management Plan and Survey, we still have concerns that it may inadvertently limit the trail's scope to only the gravel pit area. We wish to reiterate that the envisioned DTE 5th Loop would extend beyond the gravel pit itself. It would incorporate the gravel pit and the surrounding areas, while ensuring a seamless connection to the existing DTE trail network.

Also, please see the below Cassidy Prison Area Statement document we sent to Matt and Michelle which we also discussed in person with them.

As the destination marketing organization for Washtenaw County, we find great value in the potential addition of a professionally designed disc golf course within the Waterloo 10-year management plan, specifically at the Cassidy Lake area. This development would have benefit to residents and potentially create economic impact across the county through visitation. Disc golf is a low-barrier entry sport, with an already strong following in the region and across the state. The course would serve as a community gathering place and amplify our quality-of-life offerings as a region.

The Ann Arbor Sports Commission, a division of Destination Ann Arbor has already explored the opportunity a professionally developed course, in a beautiful and unique setting at Cassidy lake, would contribute to attracting impactful disc golf tournaments with participants from across the region and country. These events would contribute to the state and local tax base and generate significant economic impact to not only the western portion of our county, but across the county and region.

Please find attached our letter of support for this project. We support this addition to the plan and excitingly anticipate sharing this asset to residents and visitors of Washtenaw county in the future.

Thanks for discussing the matter of the proposed horse camp on Maute rd and my situation with Chad Simpson. I wanted to relate this situation as he is the one proposing the new horse campground across from where he lives. I equivalently am voting NO on the proposed horse campground. There will be too many problems with it as discussed also some problems are close neighbors and traffic. The present horse campground on Loveland road has been sufficient for many years and has no neighbors to distract. I have lived in this area on Morrissey Rd for 60 years. I have had horses here for all that time. In fact I ran a riding stable here from 1965 to 1975. Most of the clients were area campers. Costs and especially insurance costs made me end it. I have yet boarders and give some lessons.

If you want more advice or information check with Sally Stommen and Arlene Taylor the joint, Masters of the Waterloo Hunt Club Finally my vote is NO on the horse campground on Maute Rd Thank You
Mary Wolcott

I know you are super busy, but was wondering if I could bend your ear for a few minutes on the phone: Re: The forthcoming Waterloo 10 year Plan and disc golf.

I'm headlong involved in disc golf advocacy now and the disc golf world in general (I can elaborate more on that with you at a future date). That said, I've been trying to get a provision for a new high-quality disc golf facility at Waterloo, with an eye on the Cassidy Lake Prison Property. I got representatives from the local Ann Arbor disc golf club to attend the Waterloo stakeholder planning meeting last July. I was in Finland at the Disc Golf World Championships and couldn't attend. I also met with Sean Dietrich from DiscGolfPark (pro design and build company who contacted you) on-site at Cassidy last summer.

I'll cut to the chase...

I thought we were going through all the right steps to get a provision in the 10 year plan for a "new high quality disc golf course" at Waterloo, not unlike the fantastic course the Department has developed at Bald Mountain. The current course at Waterloo's Big Portage Lake is simply of poor quality in just about every facet, and needs to be abandoned. While other high-quality courses at MetroParks and Washtenaw County Parks thrive, there is no demand for low quality courses which aren't professionally constructed. While MDNR has two very nice high-quality courses in the north/northeastern portions of SE Lower Michigan at Holly SRA and Bald Mountain SRA, there is a void in the Department's Mid-Michigan holdings.

With this in mind, I was quite dismayed to see the draft plan come out with no provisions for a new disc golf facility.

I'll be honest. I am currently in the process of lining up everyone from the large Michigan disc golf manufacturers (Discraft in Wixom and MVP in Marlette), to the Disc Golf Pro Tour Promoter and PDGA Board Member, to local clubs and economic development entities to flood the Waterloo 10-Year Plan online survey and the meeting on January 22nd.

However, I don't want to use a sledgehammer to hit a finishing nail. If there is a way to work with the Department to get a provision in the Plan without "hitting the detonator" on a mass response, I'd prefer to do that. The demand is out there. As I'm sure you know, disc golf is one of the largest growing outdoor activities, post-covid.

I spoke with both Matt Lincoln (yesterday) and Matt Schweda (several times this year) on the matter. Matt Lincoln seemed to indicate that the master plan wasn't fully-baked yet and that we could get some provisions in there for disc golf. I'm sensing that the Department really isn't too high on the idea though, as evidenced by the lack of response to the stakeholders who attended the meeting last July.

Do I need to "blow this up" and flood the survey and meeting with respondents in support of a new disc golf course? Because, if that is what is necessary, I can do that. However, I just thought there might be an easier way to accomplish things that doesn't necessitate a "mass response".

My goal here is simply to get the provision for a new high-quality disc golf course in the master plan. I am not worried about funding the costs of development. I can make that happen down the road. The cost is nothing compared to the costs of trail development.

A new high-quality course would bring in higher camping and passport revenue for the park, as well as be a boon for the local economy, not unlike what the DTE Trail has done for Waterloo.

Let's talk, I'm willing to spearhead this effort and make it another facility asset win for the Department, but first the Department needs to make the appropriate planning provisions.

The neighborhood near Maute Rd is not happy over the news that the DNR now plans to build a \$750K Horse Camp at the old prison site along the Natural Beauty Road - Maute Rd, in the Waterloo Recreation Area.

Neighbors were assured by Jim O'Brien, past Waterloo DNR Park Manager, at the public meeting March 15, 2018, that only 6 parking spots for horse rigs would be allowed to be developed as a "Staging Area" at the Old Prison site, on Maute Rd, and that no campground would be developed there. And this statement was confirmed in a letter in 2022 from Toni Brinker, the next head of Waterloo DNR after Jim O'Brien. And last year we were assured there would be no horse camp ground allowed on the old prison site on Maute Rd, by the current Waterloo Park Manager. So neighbors have been repeatedly told that an equestrian campground would not be developed on Maute Rd, at public DNR Meetings, over several years.

Developing a horse campground at the old prison site on Maute Rd will drastically impact the neighbor landowner's property values, and the solitude of the neighborhood. Please do not build a new horse campground on Maute Rd, and instead restrict the development at this site to a small daytime horse staging area, as promised.

We think a better location for a large equine campground to accommodate the larger horse trailers, would be at the huge public land area recently vacated by the gravel pit at Green and Loveland Rds.

No neighbor homeowners (and their property values) would be impacted there, nor would an equine campground at the site of the previous gravel pit increase the noise and traffic for those few neighbors. Why not choose this area instead? It is directly on the horse trails, and already has utilities and water. None of us would be objecting to the Loveland and Green Rd location for a new horse campground, if you want to build one.

List of Reasons that the newly vacated gravel pit site at Green and Loveland Rds is a far better site for a new \$750K Horse Camp in WRA: much, much more space to accommodate any camp ground, expansion, or any other activities without impacting neighbors and other user groups, no neighbors objecting, no user groups objecting, no neighbors complaining about noise and traffic, already has water and electric, has a lake, easy access from paved road, not an natural beauty road which limits development, located right on equine trail system, could open new horse trails to east down to Crooked Lake access as well, would not interfere with future riding stable concession activities, would not interfere with existing user groups like Waterloo Hunt Club and the Grit and Gravel Bike Races, gives another location for horse people to access Waterloo trails as Maute Rd would still be a staging area. The Green and Loveland Rd site advantages are far better than the Maute Rd site, for a new \$750K horse camp.

Why not consider this alternate location? How would you like to currently be building a new home on the Natural Beauty Road across from the Maute Rd site? **ALL** the neighbors are very unhappy about your plan. Please have an open mind about changing the site of your planned new horse camp.

Spoiling the natural beauty of this area of forest along the MDNR designated Natural Beauty Road (Old Prison Site on Maute Rd) with: camper hook ups, porta johns, bathrooms, drinking fountains, horse pickets, horse manure bins, trash enclosures, mounting stations, temporary horse stalls, excessive signage, pavilions, fencing, swing sets, Picnic Tables, vehicles, traffic, noise, and nighttime gatherings, is just not acceptable when you have a far better location to build a new horse camp in the Waterloo Recreation Area at the Green and Loveland Rds site.

I attended the meeting last week and because of the overwhelming attendance, decided to email my response to the projected plans for a new horseman's campground. I did complete the survey and felt that there needed to be further discussion. I am attaching that discussion and opinion of many trailriders in the area. This was written in response to the statement posted on Facebook by Waterloo Horseman's Association.

I want to thank you Scott for getting back to me prior to the meeting answering questions and clarifying goals and intentions. Thanks to Matt for such an informative meeting. And, thank you both for taking the time to review my notes. I am looking forward to the additional meeting scheduled for February 11. Please feel free to contact me with any questions or concerns.

I just wanted to provide you with an update. Should a new disc golf facility be approved at the old Cassidy Lake Prison property, I have secured grant funding for all of the baskets and tee pads. FYI - instead of using permanent concrete tee pads, as has been typical practice in the U.S., we would be using non-permanent wood "decking/docks" with a removable piece of astroturf on top of the deck. This is a more environmentally-friendly practice widely used in Finland, which is the epicenter of disc golf in the world. I have attached several pictures of such tee pads. Baskets can also be secured, but placed in a non-permanent way such that they can be removed. One possibility would be to closed the course and remove the baskets during November and December for firearms deer hunting season for an additional use of this space.

Well run meeting last night. Think telling people to ask questions threw them off and kept away most ranting. Questions:

1. Why does the DNR seem to take one person's ideas over everyone else? By the President of WHA's own FB post "WHA made their decision on wanting a campground on Maute Road on what is best for Waterloo and "NOT WHAT IS BEST FOR ANY GROUP INCLUDING ITS MEMBERS." So, he is representing his ideas—not what looks like a group of 300 or so members.
2. Is this truly basically a "done deal" or is the DNR really looking at all the concerns and legalities? We are tired of being told one thing clear back to Gary Jones and then seeing something else happen. We were basically lied to recently about the staging area on Maute before it became reality.
3. Why would the DNR want to waste \$750,000 on a campground the majority do not want and risk putting Farm Lane, a private, tax payer, out of business? The 2 existing campgrounds are not full the majority of the time. Wouldn't the DNR have better use for such a large sum of money. What facts were the budget figure on? How many campsites, etc?
4. If there is a campground so close to the existing riding stable, will that deter someone wanting to come in there and rent horses? Seems the majority DO want the stable improved and rented out.
5. Why would the DNR want to congregate all the horse traffic in one area of the park? Already more use with the staging area on Maute, WHC, neighbors, etc. The existing campground helps keep some of the traffic spread out.
6. Most bike races go down Glenn and Maute Roads. Does the DNR want the liability of increasing potential problems?

Thank you so much for taking all the comments and the time to have a meeting last night. Do hope this is not a done deal and the DNR will process everything and then let the majority of park users have a say in what happens in our neighborhood.

I am contacting you in regards to the added language on the current survey concerning Waterloo Rec Area and the DNR asking for input on a "New Campground, including the Closure of the Horseman's Campground".

When Waterloo Horsemen's Association requested a new campground with amenities, never was it to include closure of another. WHA was not proposing a trade off, one for another. Would we as trail riders like a new campground with amenities, sure we would as we feel it would not only benefit us Trail Riders physically, but would also benefit the state financially. But the closure of one for the other was not agreed upon and just seems like "Dirty Pool".

We are not saying that it would never happen due to future generations caring nothing about rustic campgrounds and others who just want to convert over to campgrounds with amenities or those who sadly, will eventually not be around anymore, but the timing is bad. I think it makes the DNR look bad as it is saying you can't have one without the other. It's almost like you're tying our hands because we want something that we can't have unless we cater to the needs the DNR offering.

I would suggest the DNR take the closure of Horseman's Campground off the chopping block and do not close it cold turkey as one for the other. Do a survey over time and let numbers speak for themselves and if the numbers don't justify the means, and that will probably happen due to an older generation not being able to camp anymore and future generations only wanting to Camp with amenities. Let the proof be in the pudding. Maybe use documented Quota's so that others can see the proof you have. Statistics do not lie.

I know it would probably be years for a new Campground with amenities to become functional so time may take care of itself but for the DNR to use the language they're using with no alternatives does not sit well with others, me included.

I have just spoken with our manager here at Waterloo, Matt Schweda, and he did put out one fire of concern where as, on our Green Lake Trail Ride, he stated that we could use that Campground to perform that event due to the distance that is involved from Horseman's Campground to Green Lake. Basically using it as a "Group Campground". Why single us out and only give us that privilege when this past year and other years, other groups have come in there and used it because of the shade that it offers and the rustic feel they desire, some from another state. Why not offer it to any group that can accumulate the numbers and want to camp there. Why throw away the opportunity for those that desire that atmosphere, physically and financially.

I do not know all the statistics but isn't there other state recreational areas who have multiple campgrounds within the state like maybe South Branch and Elk Hill and I'm only aware of them because of the access they offer to equestrian's. A Group Campground would offer the opportunity for those that still desire the amenities that the Horsemen's Campground has to offer without the continued maintenance of the campground to where it would only have to be done prior to their arrival.

Another claim is made that the DNR does not have the personnel to maintain two campgrounds but the added financial income from a new Campground, we feel, outweighs the cost of added financial

debts the Horsemen's Campground incurs compared to the financial gains of a new Campground in which additional personnel could be added.

The Waterloo Horseman Association also does its fair share of maintenance to the current equestrian Trails each year and once a year does Trail maintenance from Horseman's campground to Green Lake Campground and from Maute Road staging area to Willis Road covering almost the entire Waterloo Pinckney Trail from M52 to near Portage Lake for the privilege of using them trails for one day and then also raising funding from said events so the WHA can reinvest 100% of funding raised back into the trails and the camps.

Not does wha do trail maintenance but twice a year, usually one to two weeks prior to the holiday events we also do work bee's that include the Horseman's Campground

Let me also remind you that the Waterloo Horseman Association, along with a grant from the DNR, has invested over \$20,000, \$10,000 from the grant and \$10,000 of Waterloo Horsemen's Associations budget by hiring subcontractors plus much sweat equity the past few years to improve the Horseman's Campground with another approved \$10,000 Grant waiting in the wings to be used on that Campground and Staging Area.

Again, even though a single camper may not like the decision, a good alternative may be for it to be used as a "Group Campground" for those that currently still use it as a group and those that singularly want to use it but would have to take an initiative on their part to gather more campers at that time to make it even more financially beneficial to the DNR.

Another concern that some have is that there may be a "Hidden Agenda" buried in this proposal of shutting down the Horseman's Campground. Would it eventually reopen for additional Sugarloaf Camping or Mountain Bike campers. That would really lower The credibility of the DNR after we've invested so much and turn it over to another user group. Some of us see that as very possible, especially since there's is a pavilion there that Waterloo Horseman built and the solar well. A multi-use campground could be up for discussion if you want to put it on the table but if you close it for horses and reopen it for another "User Group" after what we've invested so much into that area, that would not sit well with many.

The January 22nd meeting will be here before you know it and the majority of equestrians that are coming are coming for one reason and one reason only and that is due to the issue of the closure of the Horseman's Campground and I believe it is not going to be a pleasant one. If an agreement could be made prior to that meeting, the sooner the better, that would definitely tone the meeting down with many less participants knowing that their sole reason for being there has already been resolved. Timing sometimes can be everything and if a decision could be made prior to the January 22nd meeting at the Discovery center, I could put out the said agreement on social media so that many would not have a reason to attend the meeting.

Waterloo Horseman Association has a meeting this Wednesday where our park manager says he will be attending and we are hoping that if not prior, that then he may bring us a decision that puts these issues to rest. Please think hard about your decision, DNR's reputation and the effects it may have

on individuals and current Friend's Groups who have been such an asset to the Waterloo Recreation Area since 1993 and hopefully, years to come.

Several people from the user groups present at Wed night's DNR Meeting at Eddy heard you say that you held a previous meeting (in March of 2024) and presented this DNR Plan. We all talked after the Wed meeting and all of us think you are incorrect, no "campground" on Maute Rd was listed on your Plan at any previous meeting we attended.

The draft plan presented Wed was the first time any of us had ever seen the proposal of an equine "campground" on Maute Rd from the DNR, in writing. And several of us were sure you said that this was the second time this Plan had been presented, and one of us asked how many user groups were at that first meeting and you said 50. There may have been 50 people at that meeting, but not 50 user groups, and a "campground" on Maute Rd was not presented at the meeting we all attended.

In fact all of us have been told by the Park Managers, from 2018 through 2024, that there would not be a "campground" allowed on Maute Rd, that only 6 day use parking spots would be allowed there. So Wed was our first chance to object to this location for a new equine campground on Maute Rd. and we were not given much opportunity to voice all of our objections at the meeting. Nor have our comments from previous DNR meetings on this subject since 2018 been acknowledged in your DNR reports. How can we object if you don't tell us you are planning a "campground" on Maute Rd, especially when the Waterloo Park Managers tell us the opposite, that you are not building a campground on Maute Rd?

The Wed Jan 22, 2025 meeting is the first time the DNR has presented a Plan to us that had an equine "campground" listed on Maute Rd, and we would like time to be able to state our reasons for objecting to the Maute Rd location. We think the DNR has a format where you notify major user groups and immediate adjacent neighbors on plans like this, over an extended time period, so ample opportunity exists for the DNR to hear opposition.

Please let us know your remedy here. We want the DNR to hear the reasons we object to a Maute Rd location for an equine campground.

I was at the DNR meeting last week and am writing in opposition of the proposed horse camp at the Maute road site. My son Zane is a full time resident directly across from the proposed site and will be the most impacted property owner. He purchased the property due to the peaceful/quiet surroundings, gorgeous natural landscape and even with a stream going through... his dream property! Even the roads that he uses, Maute Rd and Camp Rd are designated a MDNR Natural Beauty Road. The qualifications for a Beauty Road, which the MDNR had a hand in implementing, says that the roads should have no or little development along them. Zane is very surprised that the DNR is planning to develop the Maute road site after making a huge investment in his property .

Developing the horse campground will not only negatively impact the value of his property, but will also drastically change the quiet surroundings he loves. It will turn the area into a highly trafficked area with trucks, horse trailers and campers coming and going at all hours of the day and night right in front of his house. Overnight camping will bring parties, noise and all sorts of "carrying on" into the night. All this will take place with little or no supervision of the area. Neighbors feel the same as he does, and do not want the traffic, activity and general commotion in the area.

As a side, there is a private horse camp ground with full amenities at Loveland Rd just down the road from the current DNR campground. Why would the DNR need to use public funds to build a competing camp with full amenities. A third horse camp ground is not a good use of funds. If one really need a third site It would be a better to put the camp at Green and Loveland roads where there are 290 acres. This site would already be right on the current horse trails. I truly believe it would be a better site with less public/residential impact and a better use of public funds.

Thanks for your time and consideration

I have some questions about the draft management plan for the Waterloo Rec area so that I can provide my feedback on this draft plan.

Page 26 states – Develop a mountain bike trail loop and beginner skills course in the old gravel pit site previously identified by WMBA. Where is this old gravel pit located? Is within the boundaries of the current DTE Trails?

Page 36 references an “Adaptive Bike Trail” what does that mean and what location is this planned for? Is this in conjunction with the statement on page 26 above?

Also, I’m concerned the plan document page 7 - 1.3, references a planning team that helped create the draft plan. There is no one on that planning team that represents hunting or fishing stakeholders. While there are members of the Waterloo Hunt Club, they are an equestrian club and they do not really hunt in the park. Is there a reason why there are no one representing hunters or anglers on this team?

I ask this because of the statement below on page 35:

Page 35 states – “Hunting – expanded gun season conflicts with hikers and others”

Hunter and anglers pay for a significant part of the DNR’s budget and hikers and bikers pay nothing. Part of the land acquisition in Waterloo was funding by hunters. This statement should really turned around to state hikers and bikers are interfering with hunting opportunities the rec area. Part of this plan should be focusing on improving hunting and fishing opportunities in the rec area and that seems to be lacking, perhaps because the planning team had no representation from these stakeholders.

I welcome your feedback.

Thank you for your comprehensive report on the 10 year plan for Waterloo Recreation Area. It is a thorough and comprehensive plan for the park. I do live in the recreation area and do have a particular concern that I would like to share. I am unable to attend the stakeholders meeting in January so I would like to comment via this email.

I am concerned about the development of the Maute Rd day pull in area being considered for a campground for various reasons. First there is a perfectly good equine campground off Loveland road that is not fully utilized. I agree there is no power there but so many of the rigs have generators now that permanent electricity and water is only an extra convenience and not necessary for a nice camping with horses experience. The Loveland location is a somewhat isolated area so horses, loud parties, late night bonfires etc do not disturb neighbors.


Second, there is a very nice commercial campground with electricity, dump, and water within a very short distance from the current campground. Both campgrounds are not fully utilized and there is space for much more development in the private sector campground. There is an owner who is trying very hard to make a successful business and a new campground could negatively affect his ability to make a living.

Neighbors close to the Maute Rd day parking area are very concerned about having an overnight campground next to their properties. Trespassing, loud noises, lights on during most of the night, parties etc will affect their enjoyment of the rural lifestyle they moved into this area for. It is likely to negatively affect property values also. Already plowing the field flat of natural growth, poles all over, a pavilion etc have made a nice natural clear space into a flat desert. Not the experience one wants to see in the recreation area. It is an eye sore. In November 2023 a petition was sent to the DNR Waterloo recreation manager Matt Schweda and Gary Jones, District Supervisor with 39 signatures of close neighbors who petitioned not to develop this area. It seems clear that most of the neighbors are very concerned about having a development in this area.

The Maute Rd day pull in area is also on a Natural Beauty road that was designated to keep this area rural, undeveloped and natural. Having big rigs will bring unwanted traffic and destruction to a dirt road over time. This is inconsistent with that designation and should be preserved. Once it is destroyed it is almost impossible to resurrect.

Should a new campground really be needed, which I seriously doubt, then there are many other options available. Such as the gravel pit. There are already some services available at that site.

Lastly, once land is developed in the recreation area it will never come back. The WRA is truly an asset to the state of Michigan and to develop this for a small sector of the Michigan residents at an amount close to 1 million dollars (quote \$750,000 but I expect more) and used only a part of the year seems excessive and not fiscally responsible.

 Please consider my concerns. I am sorry I cannot be at the meeting to share my thoughts in person.

I'm not currently a member of WHA but know that I speak for many friends and regular riders and campers at Waterloo Recreation Area.

I want the DNR to know we disagree with the primary campground being moved to another location and believe that everyone's goals can be accomplished at the current Horseman's Campground.

First of all, we agree with the goals of WHA to preserve Waterloo and bring new equestrians to the area. We also appreciate everything the association does to maintain the trails, campground and lobbying for the interest of the equestrian community. Where we disagree is how to best achieve those goals.

To best achieve those goals

- 1) Extend the current trail system to the East of the existing camp. Looking at the DNR goals from 2013 this was a priority. However, only one trail was reopened, the 30/45 minute loop behind the Burns cabins. There are many other trails that could be reopened. For instance, the trail to the north and west of Crooked lake. This could be tied into the existing trail near the gravel pit. The trail going to (what we always called) Sugarloaf lookout and then across Waterloo Rd to the East. I know there are currently bike trails in that area, but many camps have bike and horse trails and coexist amicably in the same area. Fort Custer is an example of that. This would double the trail system and make maintenance easier as the traffic would be spread out over a larger distance with less erosion.
- 2) Extending the trail system would create an opportunity for a day/staging area to the east of Waterloo Rd. Possibly incorporating this into the Cassidy Lake area. This would also make connecting to the Pinckney trail easier, making the current Horseman's Campground, once again, the center of the equestrian trail system.
- 3) The current camp can be restructured with less cost and manpower and disturbance of our ecosystem.
 - a. The new sites for larger rigs with electric and water can be where the current staging area is located. This area is level and closer to the road. A new well is already in place powered by solar. There are options to power electric and water at the sites, solar is one. Options would need to be researched to see what the best mode would be. Perhaps this would be the most economical/greener option.
 - b) The staging area could be relocated to the back of the campground inside the drive loop. Any overflow can be handled as always by opening the area across from the Sugarloaf drive. This area could be improved to promote use of day riding.
 - c) That would leave the already established sites as rustic for the campers that prefer those.
- 4) There would be no traffic concerns with the existing site. However, signs could be implemented to communicate the narrowness and condition of Loveland Rd.

- 5) An additional dumping station can be added to Sugarloaf to accommodate the equestrians needing this service.
- 6) Extending the equestrian trail system to East would lessen the constant exposure to the less experienced riders at the Stable as safety is always a concern.
- 7) Updating the trail maps will give riders more options to access the trails to West and easing up on the erosion issues of the more heavily traveled areas.
- 8) Keep the Mauted Rd staging area with “requested camping only” for groups as it is already improved.
- 9) Marketing with the extended trail system to the East will make Waterloo, in my opinion, a sought after destination rivaling Hocking Hills and Brown County. It is not only camping amenities that will draw riders but RIDING.

CLOSING

I believe with these changes and additional areas of focus, everyone’s goals can be achieved. The “cocoon” of tax paying riders that have used this Horseman’s Campground with their families for generations are the CORE and BACKBONE of Waterloo equestrians. Without them Waterloo equestrian ceases to exist. This group is a priority. Everyone agrees that the updates to the campground are past due. They are part of the 2013 initiatives and only a portion of those goals were met.

All historic cities work to maintain their own uniqueness. In Santa Fe, NM old town works to preserve their history. It still has the original flavor that draws people to their Saturday market to shop, walk the streets and eat at the sidewalk cafes. They didn’t bulldoze it so people have more convenient parking. I for one am glad I can go there and experience the ambiance that is Santa Fe. I believe what makes Waterloo special and unique is the existing facility. Enhancing what we already have will be what invites others to experience it too.

Project Website

A webpage was maintained through the duration of the planning process and was updated with maps, meeting information and the draft plan. Contact information was provided for members of the public to submit comments or ask questions.

Satisfaction with online public input opportunity

The online survey was completed by 1,261 individuals and the responses received are incorporated above. Respondents were also asked to rate the level of satisfaction with the options provided to review and comment on the draft plan. , an average rating of 3.8 out of 5 was received from 1,139 respondents. Respondents cited the ease of providing input and commended the opportunity to provide input with some not agreeing with certain action items.

APPENDIX C

Capital Outlay Projects Opinion of Probable Cost

State Park Funding

The primary funding sources for state park improvement and development projects are Recreation Passport sales (motor vehicle registration fee), the Park Endowment Fund (generated from royalties from oil, gas and mineral extraction on public land) and the Park Improvement Fund (from camping and other state park user fees). From these sources, the annual capital outlay budget for state parks varies from year to year and has averaged approximately \$14 million per year over the past few years.

One-time appropriations from the state General Fund may also be ear marked for specific needs but are not guaranteed. In 2022, the American Rescue Plan Act (ARPA) was approved by the Michigan legislature which directed \$250 million towards state park infrastructure, trails and a new state park in Flint. Although this funding is welcomed, the amount of need is still estimated to be in the hundreds of millions due to the amount of aging infrastructure in the state park system.

With a large gap between financial need and budget, all projects are carefully analyzed to look at innovative solutions to increase efficiencies or downsize assets.

Estimated Cost of Proposed Developments

The following table provides an estimate of probable cost for each capital outlay development project proposed at Waterloo Recreation Area over the next ten years. Management and operations actions, small projects, which are funded out of district or park funds, and those lead by partners, are not included in this list but may have additional financial implications. The costs are based on information available at the time and will be refined as conceptual and detailed designs are completed. Where noted, the costs may only include studies or project planning, which will provide direction for development costs if determined appropriate. The costs are based on 2024 prices and should be adjusted according to the consumer price index and the market at the time of implementation.

The following actions are ranked in terms of priority based on health, safety, and welfare, as well identified need and ease of implementation (cost, ability to implement with own staff, partnerships etc.). Priority Level 1 projects indicate those that should be addressed within the next 2 years. Priority Level 2 projects include those that should be addressed within 2-5 years. Priority Level 3 projects are desired but can be tackled in the next 5-10 years once funding has been identified. Actions that are currently funded but are not yet completed were not listed below.

PRD will seek future internal funding, alternative funding sources, partnerships and other potential mechanisms for implementing the desired future conditions defined in this plan. Costs listed below do not guarantee funding. On an annual basis, PRD districts determine priorities for project planning and project capital outlay. Each district's top projects are then evaluated at a state-wide level for available funds.

Infrastructure and Development: Capital Outlay

Action	Priority	Opinion of Probable Cost*
Resurface Sugarloaf and Portage Campground playgrounds. (ARPA)	1	\$245,000
Replace Portage Lake fishing pier. (ARPA)	1	\$360,000
Renovate Eddy Discovery Center including building infrastructure and exhibits. (ARPA)	1	\$800,000
Renovate equestrian stables and rebid concessionaire contract.	1	\$100,000
Conduct a feasibility/impact study to evaluate improvements to existing equestrian campground, including adding electricity to some sites, and implement recommendations.	2	\$100,000
Develop former Cassidy Prison site to include a multi-use parking area, hike-in campsites, Pinckney Waterloo Trail access and carry-down boat access.	3	\$40,000
Improve Mill Lake lodge building to support additional education/interpretive opportunities for school groups and professional development.	3	\$200,000
Design and construct new park headquarters in an existing open field just east of Clear Lake Road, 0.2 miles south of Green Road.	3	\$1,000,000
Implement Phase 2 of the park roads and parking lots project.	3	\$1,500,000
	TOTAL	\$4,345,000

(ARPA) - Projects currently funded and in progress through the American Rescue Plan Act

* Does not guarantee funding. Excludes costs yet to be identified by studies to determine best way to proceed

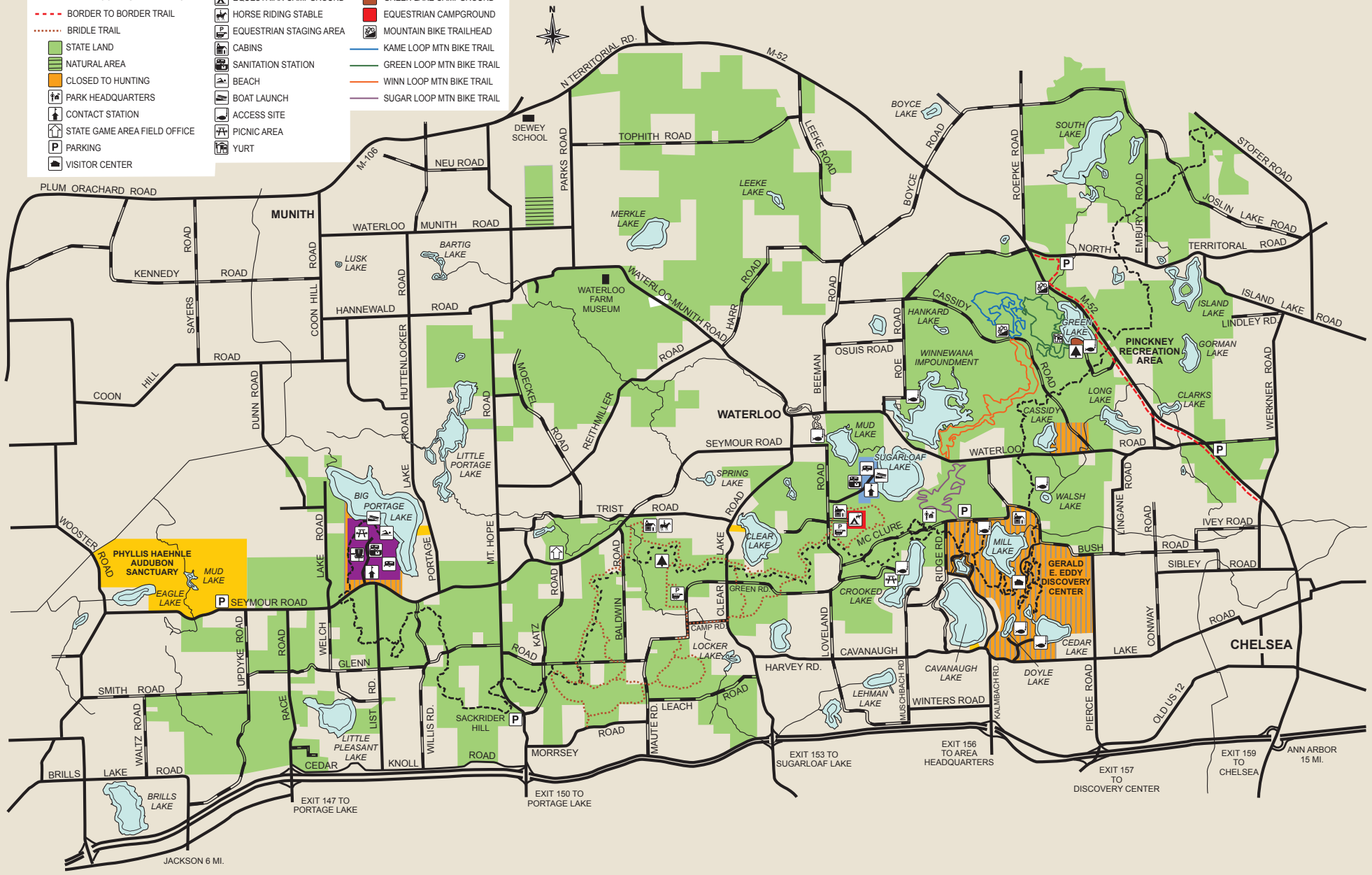
APPENDIX D

Resource Maps

1. Park Map
2. Park Boundary
3. Management Zones
4. Funding Sources
5. Cover Types
6. Natural Communities
7. Topography
8. Wetlands

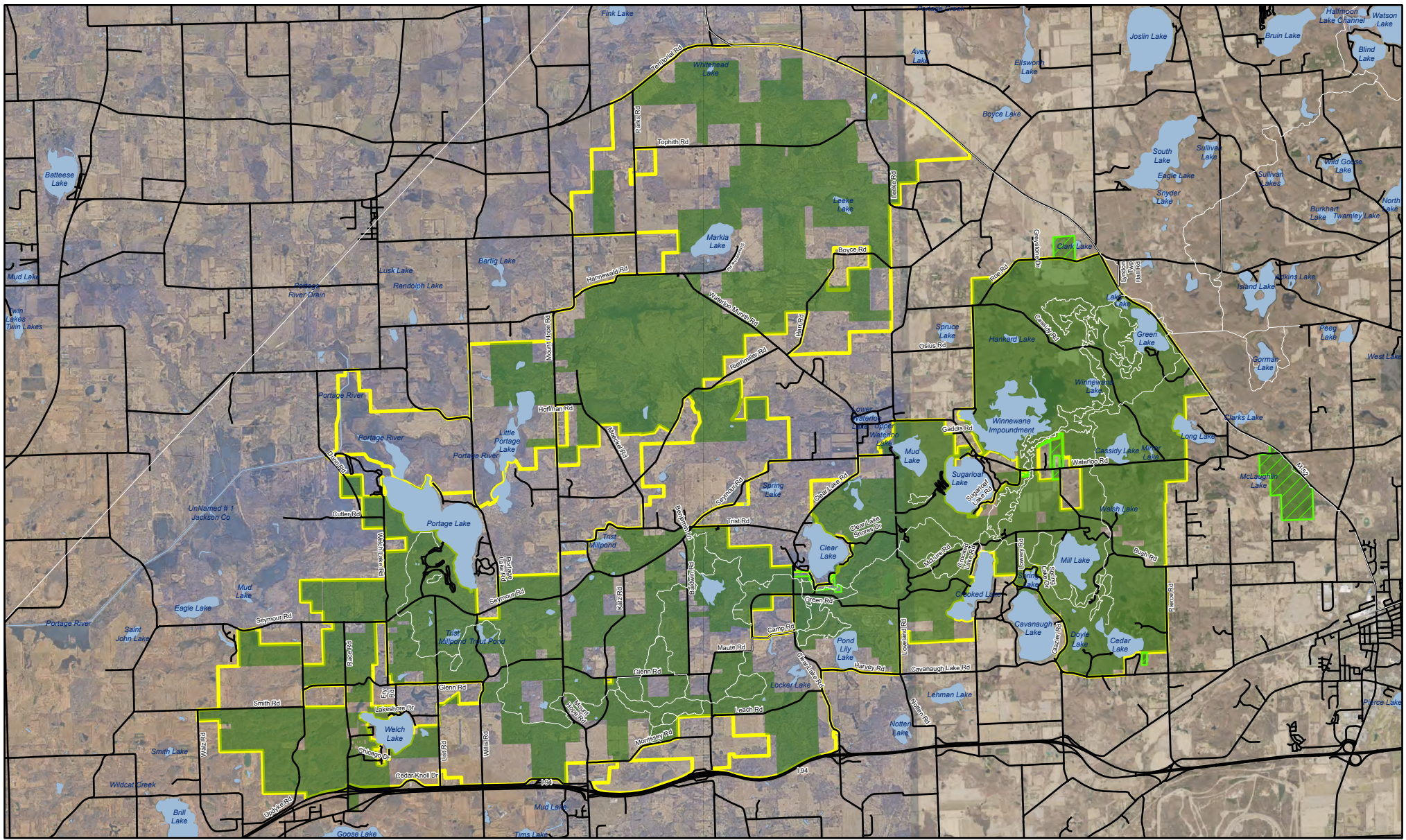
Waterloo State Recreation Area

- | | | | |
|-------------------------------------|---------------------------|-----------------------------|---------------|
| — PAVED ROAD | 🏠 MODERN CAMPGROUND | 🟪 PORTAGE LAKE CAMPGROUND | ⛳ DISC GOLF |
| — GRAVEL ROAD | 🏕️ RUSTIC CAMPGROUND | 🟩 SUGARLOAF CAMPGROUND | 🟡 COUNTY PARK |
| - - - WATERLOO-PINKNEY HIKING TRAIL | 🐎 EQUESTRIAN CAMPGROUND | 🟤 GREEN LAKE CAMPGROUND | |
| - - - BORDER TO BORDER TRAIL | 🐎 HORSE RIDING STABLE | 🟥 EQUESTRIAN CAMPGROUND | |
| ⋯ BRIDLE TRAIL | 🏠 EQUESTRIAN STAGING AREA | 🏍️ MOUNTAIN BIKE TRAILHEAD | |
| 🟩 STATE LAND | 🏠 CABINS | 🚵 KAME LOOP MTN BIKE TRAIL | |
| 🟩 NATURAL AREA | 🚽 SANITATION STATION | 🚵 GREEN LOOP MTN BIKE TRAIL | |
| 🟠 CLOSED TO HUNTING | 🏖️ BEACH | 🚵 WINN LOOP MTN BIKE TRAIL | |
| 🏠 PARK HEADQUARTERS | 🚤 BOAT LAUNCH | 🚵 SUGAR LOOP MTN BIKE TRAIL | |
| 🏠 CONTACT STATION | 🏠 ACCESS SITE | | |
| 🏠 STATE GAME AREA FIELD OFFICE | 🏠 PICNIC AREA | | |
| 🅑 PARKING | 🏠 YURT | | |
| 🏠 VISITOR CENTER | | | |









JACKSON 6 MI.

EXIT 153 TO SUGARLOAF LAKE
 EXIT 156 TO AREA HEADQUARTERS
 EXIT 157 TO DISCOVERY CENTER
 EXIT 159 TO CHELSEA
 ANN ARBOR 15 MI.

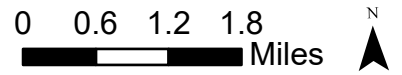


Waterloo State Recreation Area Park Boundary

 Waterloo Recreation Area Boundary	 Recommended to be added to Project Boundary	 Roads
 2020 Project Boundary as approved by the Director		 Lakes and Rivers
		 Trails

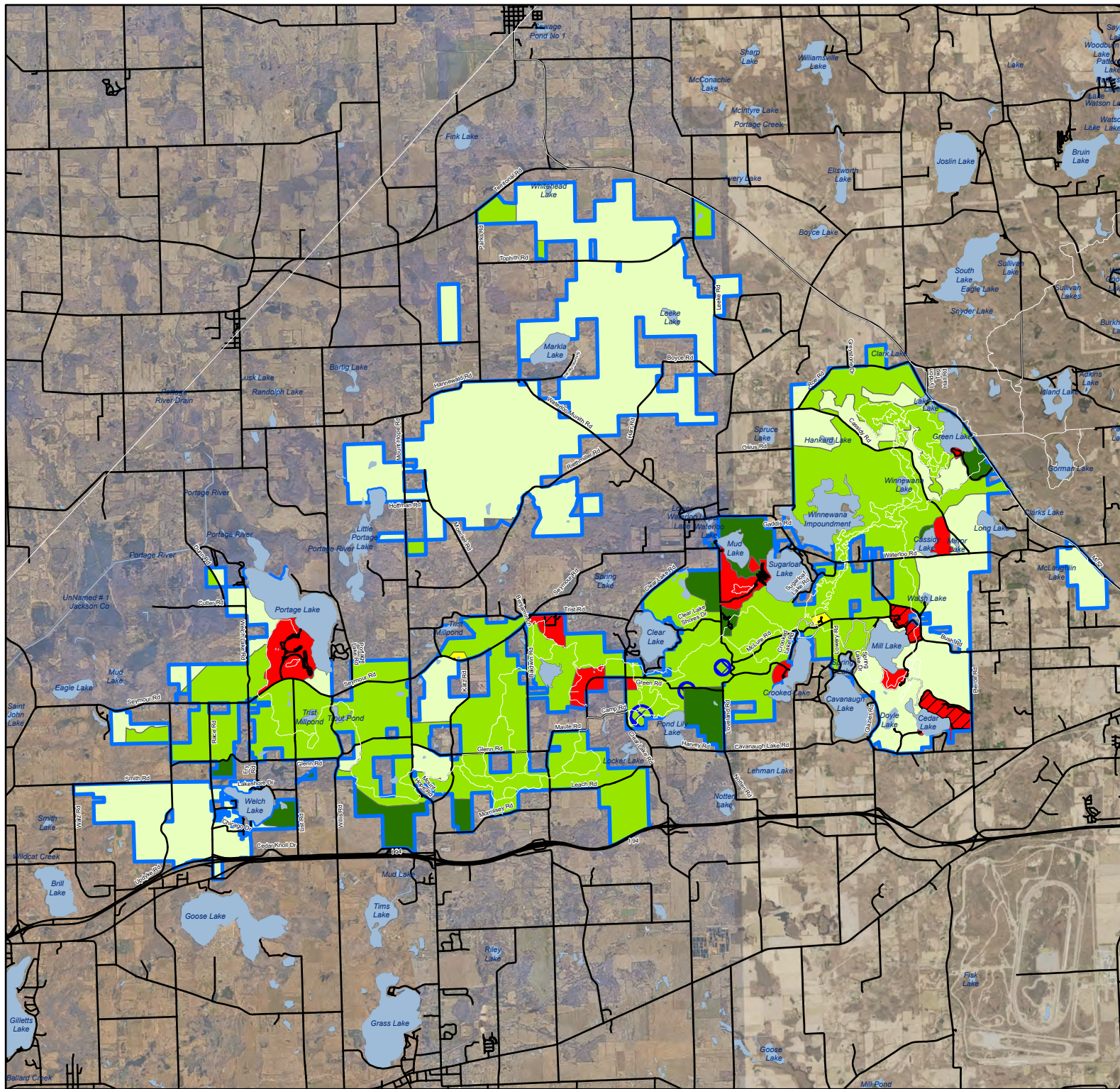
MICHIGAN DEPARTMENT OF NATURAL RESOURCES
PARKS AND RECREATION DIVISION

Updated: 10/02/2024 by A. Ihnken



*A project boundary is a geographic area in which the DNR is seeking to acquire property that supports the mission of the DNR on a willing buyer/willing seller basis, approved by the Natural Resources Commission in 2020

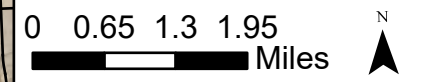
Waterloo State Recreation Area Management Zone Phase 2



- Trails
 - Roads
 - Waterloo Recreation Area Boundary
 - Lakes and Rivers
- ### Management Zones
- Primitive Zone
 - Backcountry Zone
 - Natural Resource Recreation Zone
 - Developed Recreation Zone
 - Visitor Services Zone
 - Cultural Landscape Overlay
 - Scenic Overlay

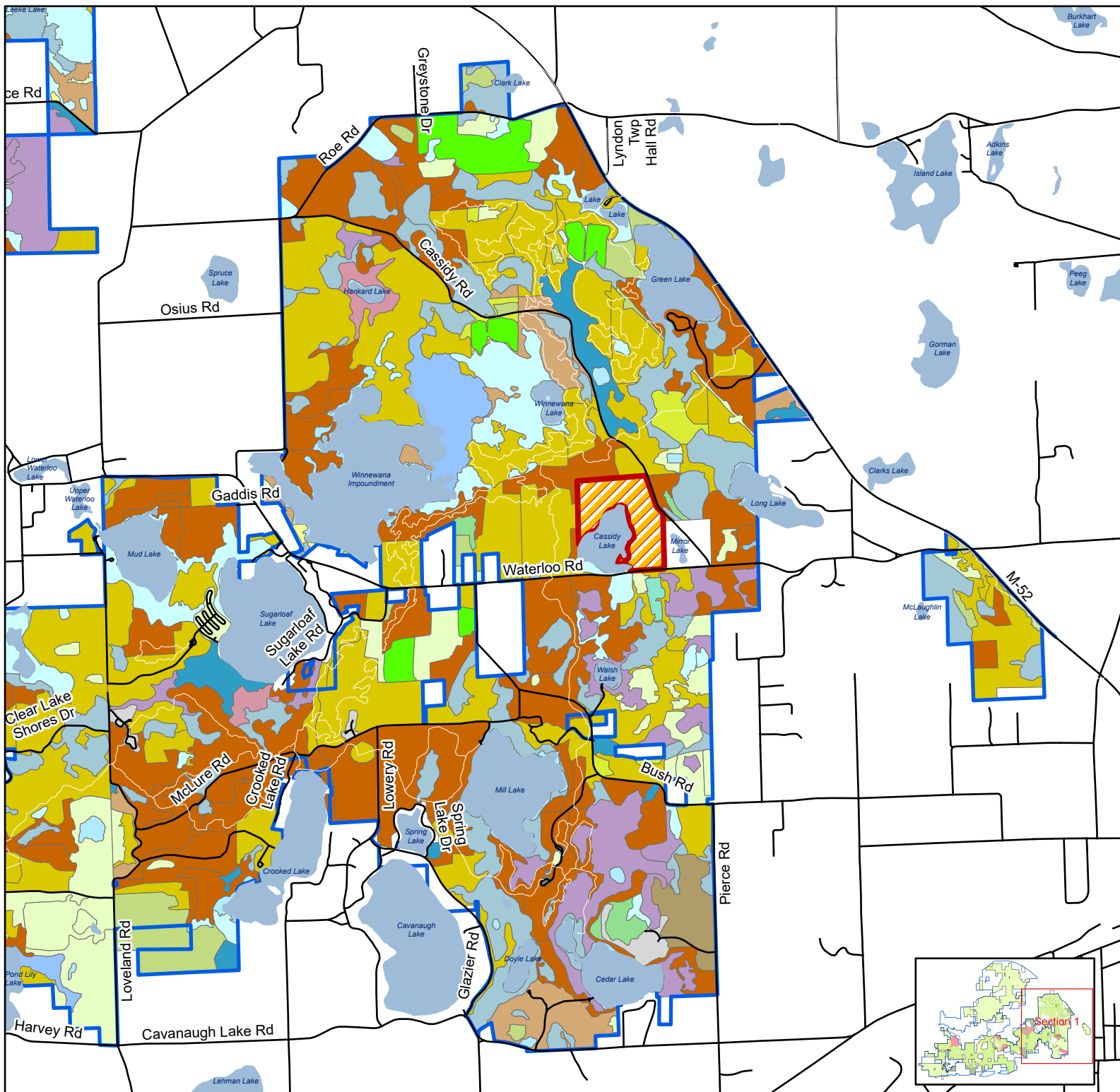
MICHIGAN DEPARTMENT OF NATURAL RESOURCES
PARKS AND RECREATION DIVISION

Updated: 11/20/2024



Waterloo State Recreation Area Forest Cover Types Phase II

Section 1



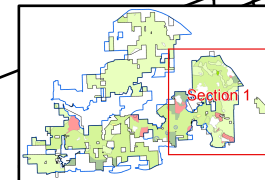
- Roads
- Waterloo Recreation Area Boundary
- Trails
- Forest Covertype**
 - 411 - Northern Hardwood
 - 412 - Oak Types
 - 413 - Aspen
 - 419 - Mixed Upland Deciduous
 - 421 - Planted Pines
 - 429 - Mixed Upland Conifers
 - 430 - Upland Mixed Forest
 - 611 - Lowland Deciduous Forest
 - 612 - Lowland Coniferous Forest
- Non-Forest Covertype**
 - 110 - Low Intensity Urban
 - 122 - Road/Parking Lot
 - 211 - Cropland
 - 310 - Herbaceous Openland
 - 320 - Upland Shrub
 - 330 - Low-Density Trees
 - 500 - Water
 - 621 - Floating Aquatic
 - 622 - Lowland Shrub
 - 623 - Emergent Wetland
 - 629 - Mixed Non-forested Wetland
 - 730 - Mud Flats
 - 🚧 No Stand Data

MICHIGAN DEPARTMENT OF NATURAL RESOURCES
PARKS AND RECREATION DIVISION

Updated: 09/04/2024 by A.Ihnen

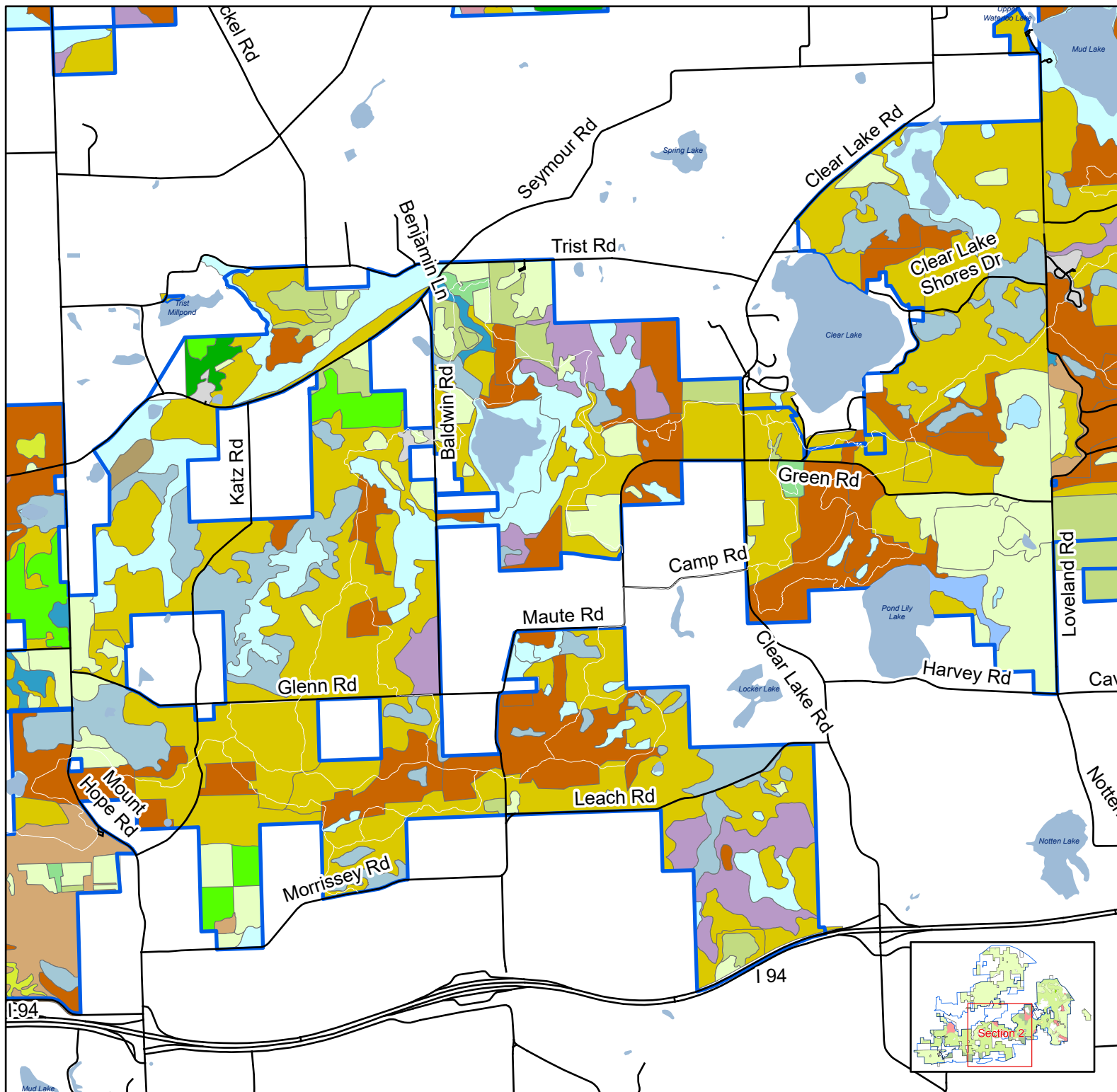


0 0.25 0.5 0.75
Miles



Waterloo State Recreation Area Forest Cover Types Phase II

Section 2



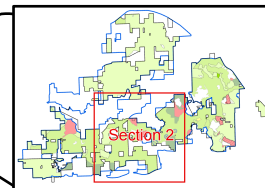
- Roads
- Lakes and Rivers
- Waterloo Recreation Area Boundary
- Trails
- Forest Covertype**
 - 411 - Northern Hardwood
 - 412 - Oak Types
 - 419 - Mixed Upland Deciduous
 - 421 - Planted Pines
 - 422 - Natural Pines
 - 430 - Upland Mixed Forest
 - 611 - Lowland Deciduous Forest
 - 612 - Lowland Coniferous Forest
- Non-Forest Covertype**
 - 110 - Low Intensity Urban
 - 122 - Road/Parking Lot
 - 211 - Cropland
 - 310 - Herbaceous Openland
 - 320 - Upland Shrub
 - 330 - Low-Density Trees
 - 500 - Water
 - 621 - Floating Aquatic
 - 622 - Lowland Shrub
 - 623 - Emergent Wetland
 - 629 - Mixed Non-forested Wetland

MICHIGAN DEPARTMENT OF NATURAL RESOURCES
PARKS AND RECREATION DIVISION

Updated: 09/04/2024 by A.Ihnen

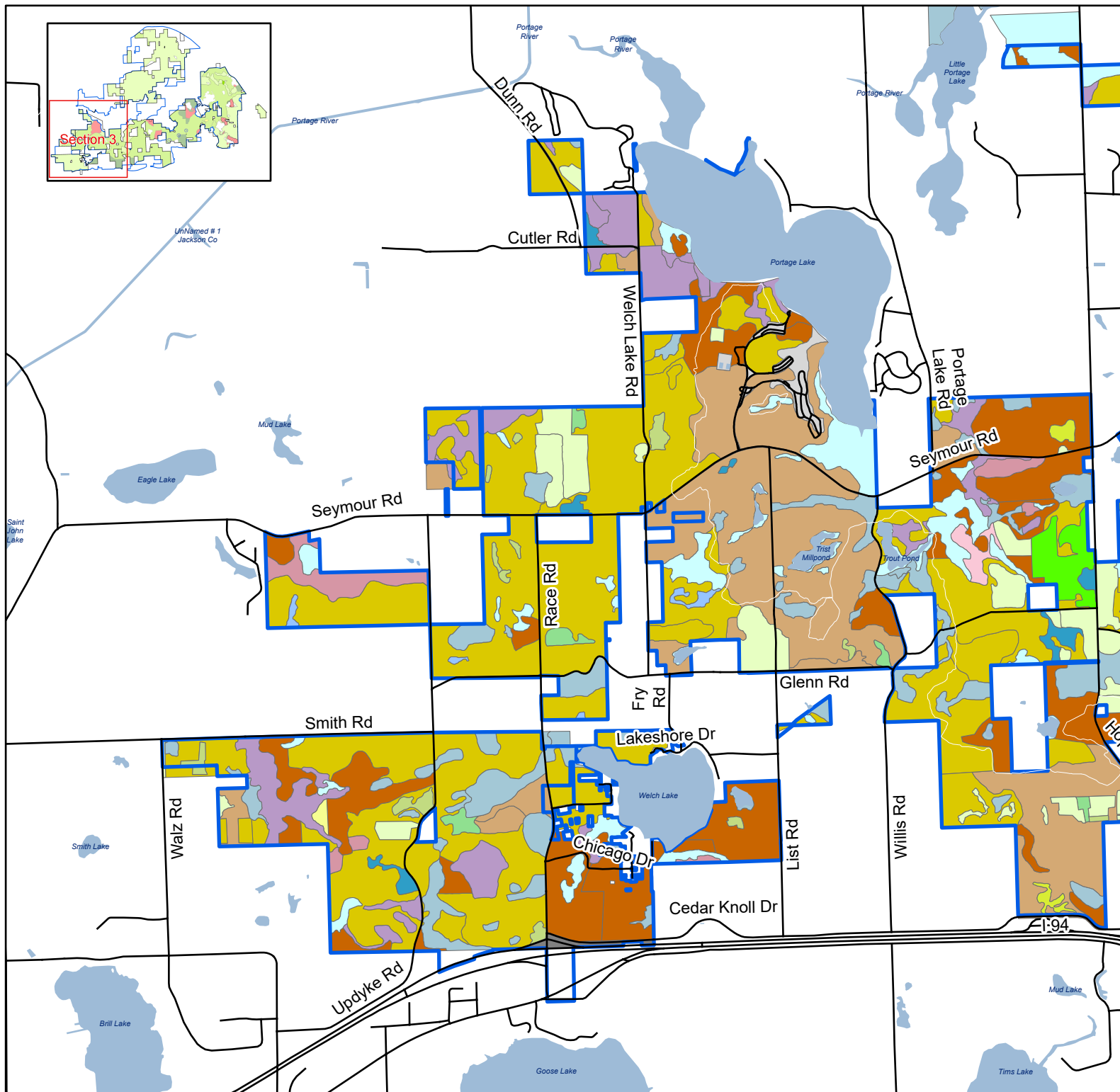


0 0.2 0.4 0.6
Miles



Waterloo State Recreation Area Forest Cover Types Phase II

Section 3



- Roads
- Lakes and Rivers
- Waterloo Recreation Area Boundary

Trails

Forest Covertype

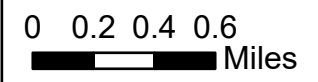
- 411 - Northern Hardwood
- 412 - Oak Types
- 413 - Aspen
- 419 - Mixed Upland Deciduous
- 421 - Planted Pines
- 611 - Lowland Deciduous Forest
- 612 - Lowland Coniferous Forest
- 613 - Lowland Mixed Forest

Non-Forest Covertype

- 110 - Low Intensity Urban
- 122 - Road/Parking Lot
- 211 - Cropland
- 310 - Herbaceous Openland
- 320 - Upland Shrub
- 330 - Low-Density Trees
- 500 - Water
- 621 - Floating Aquatic
- 622 - Lowland Shrub
- 623 - Emergent Wetland
- 629 - Mixed Non-forested Wetland

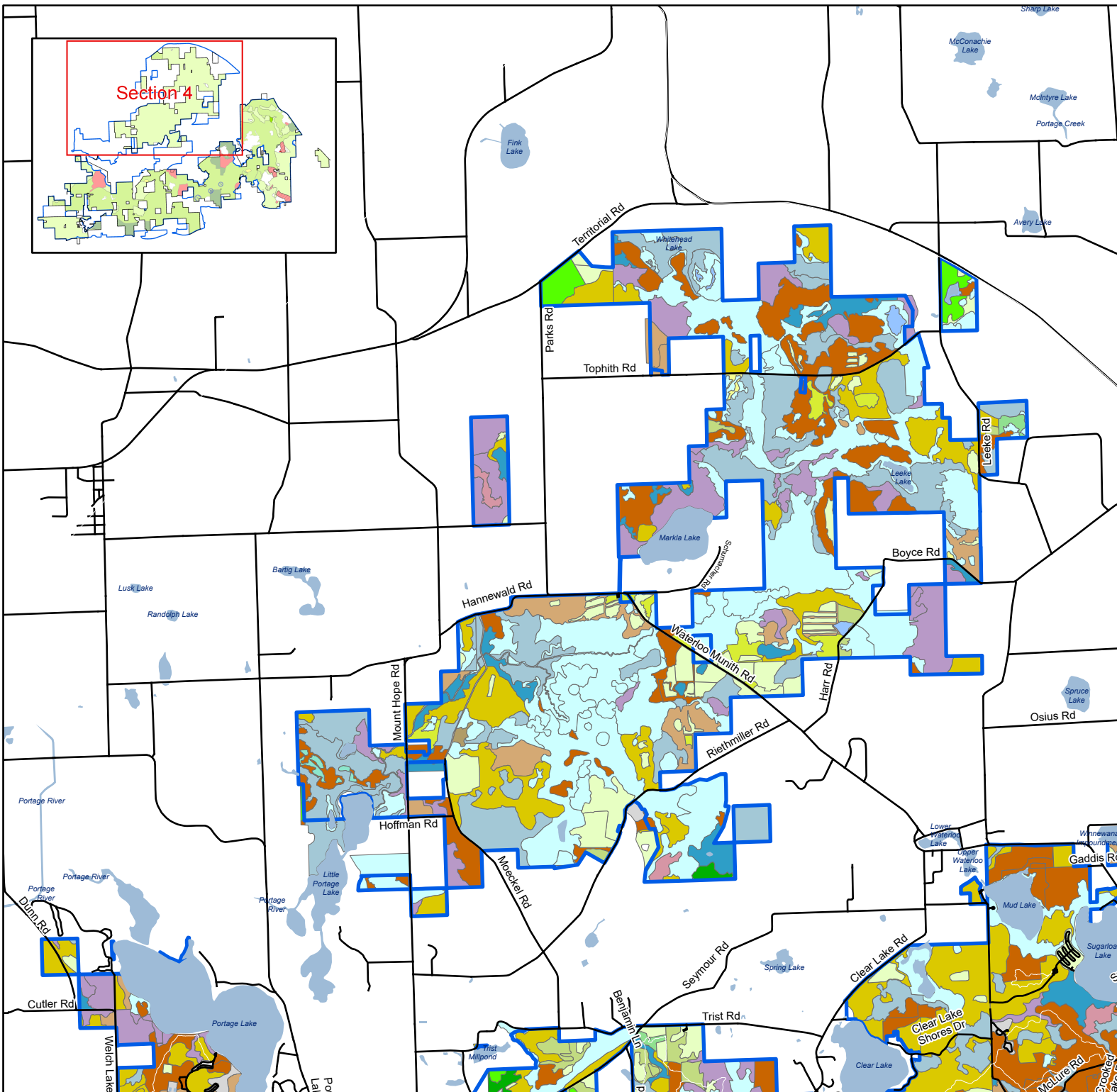
MICHIGAN DEPARTMENT OF NATURAL RESOURCES
PARKS AND RECREATION DIVISION

Updated: 09/04/2024 by A.Ihnken



Waterloo State Recreation Area Forest Cover Types Phase II

Section 4



- Roads
- Lakes and Rivers
- Waterloo Recreation Area Boundary
- Trails
- Forest Covertype**
 - 411 - Northern Hardwood
 - 412 - Oak Types
 - 413 - Aspen
 - 419 - Mixed Upland Deciduous
 - 421 - Planted Pines
 - 422 - Natural Pines
 - 429 - Mixed Upland Conifers
 - 430 - Upland Mixed Forest
 - 611 - Lowland Deciduous Forest
 - 612 - Lowland Coniferous Forest
- Non-Forest Covertype**
 - 110 - Low Intensity Urban
 - 122 - Road/Parking Lot
 - 211 - Cropland
 - 310 - Herbaceous Openland
 - 320 - Upland Shrub
 - 330 - Low-Density Trees
 - 500 - Water
 - 621 - Floating Aquatic
 - 622 - Lowland Shrub
 - 623 - Emergent Wetland
 - 629 - Mixed Non-forested Wetland
 - 730 - Mud Flats

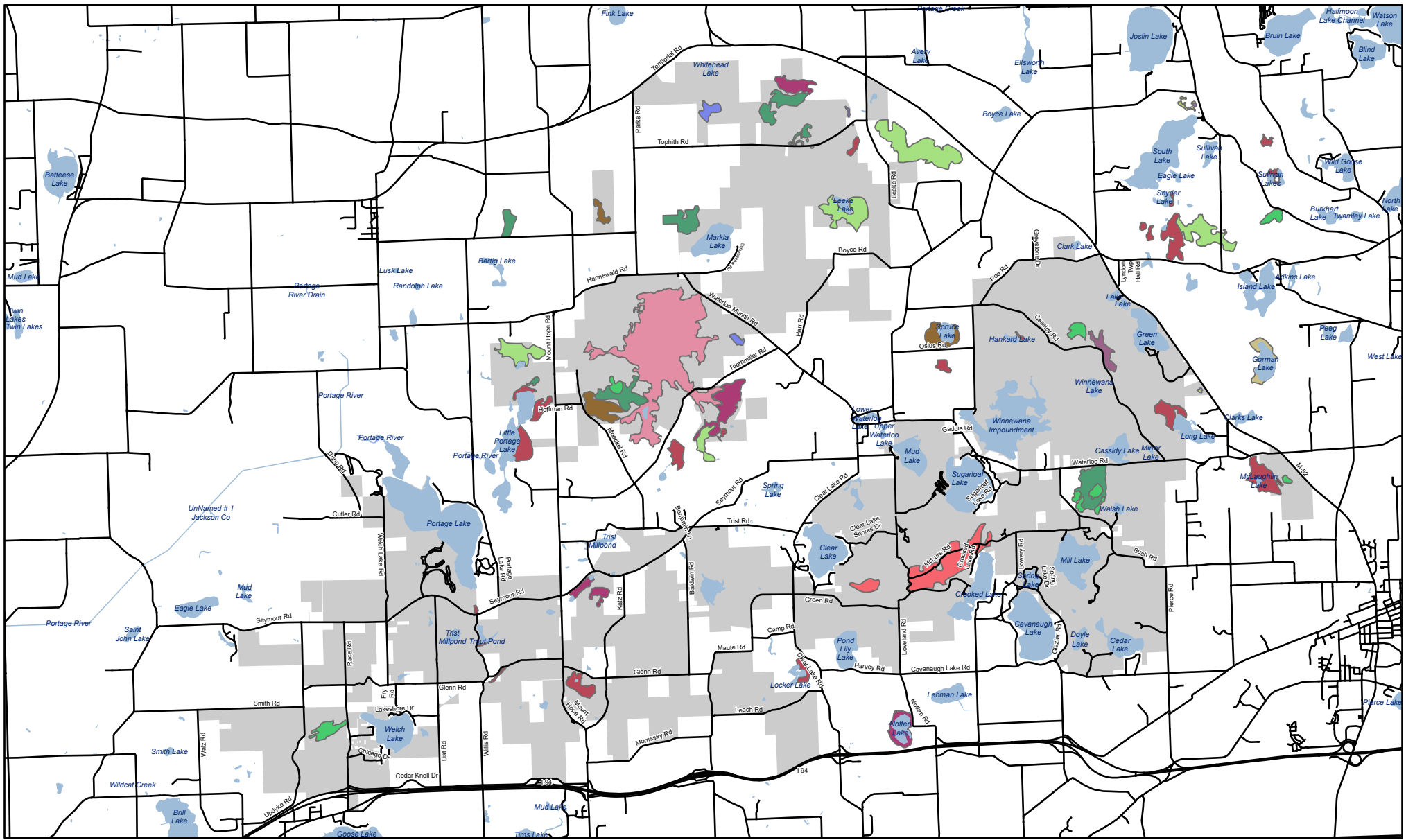
MICHIGAN DEPARTMENT OF NATURAL RESOURCES
PARKS AND RECREATION DIVISION

Updated: 09/04/2024 by A.Ihnen



0 0.35 0.7 1.05 Miles



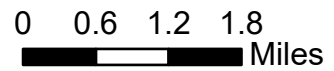


Waterloo State Recreation Area Natural Communities

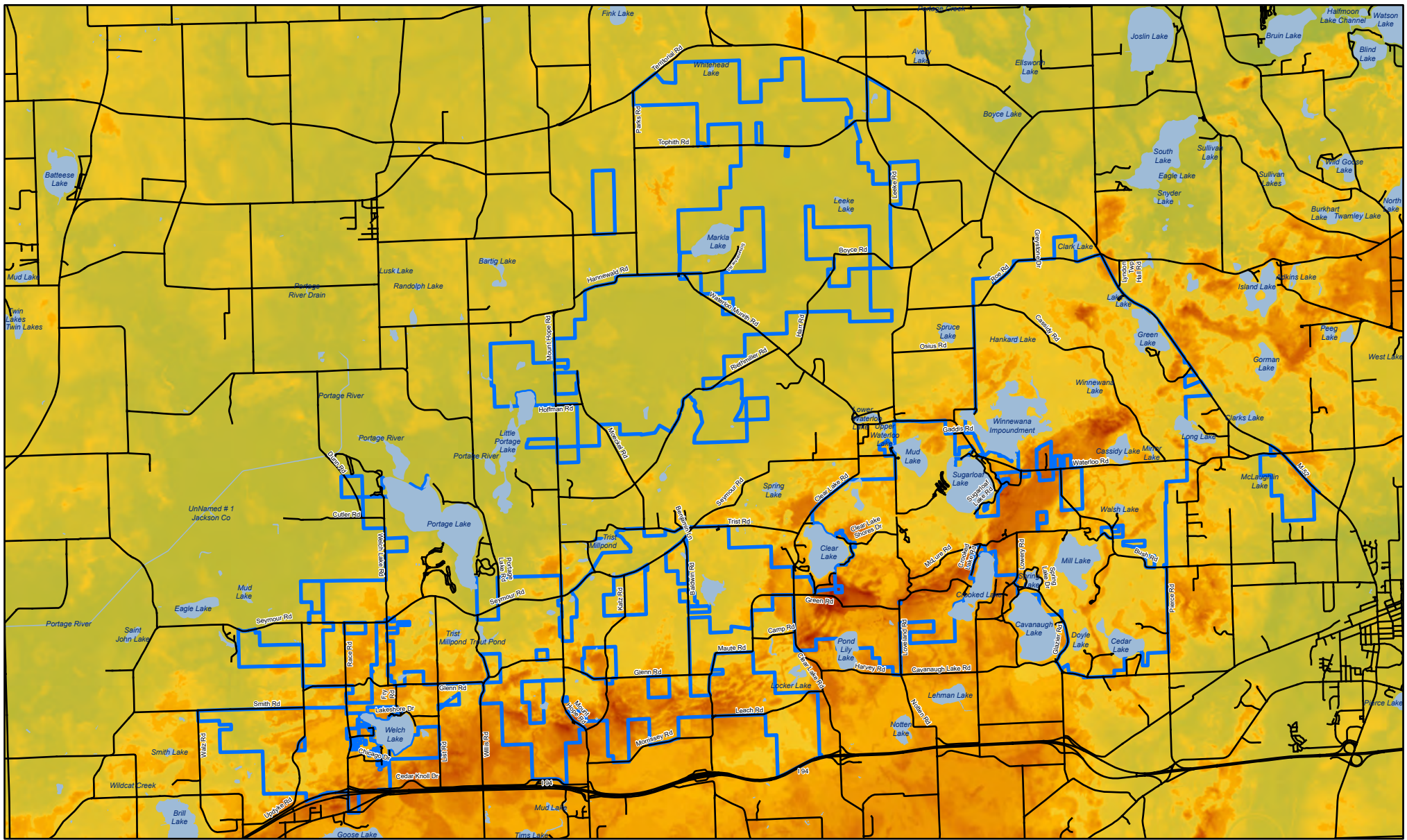
— Roads	Natural Community*	Emergent Marsh	Rich Tamarack Swamp
— Lakes and Rivers	Bog	Inundated Shrub Swamp	Southern Hardwood Swamp
— Waterloo Recreation Area Boundary	Dry Sand Prairie	Mesic Sand Prairie	Southern Wet Meadow
	Dry Southern Forest	Poor Conifer Swamp	Submergent Marsh
	Dry-mesic Southern Forest	Poor Fen	Wet Prairie
		Prairie Fen	Wet-mesic Prairie

MICHIGAN DEPARTMENT OF NATURAL RESOURCES
PARKS AND RECREATION DIVISION

Updated: 10/30/2024 by A. Ihnken



*Natural Communities of Michigan (Michigan Natural Features Inventory)



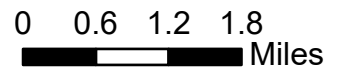
Waterloo State Recreation Area LiDAR Digital Elevation Model

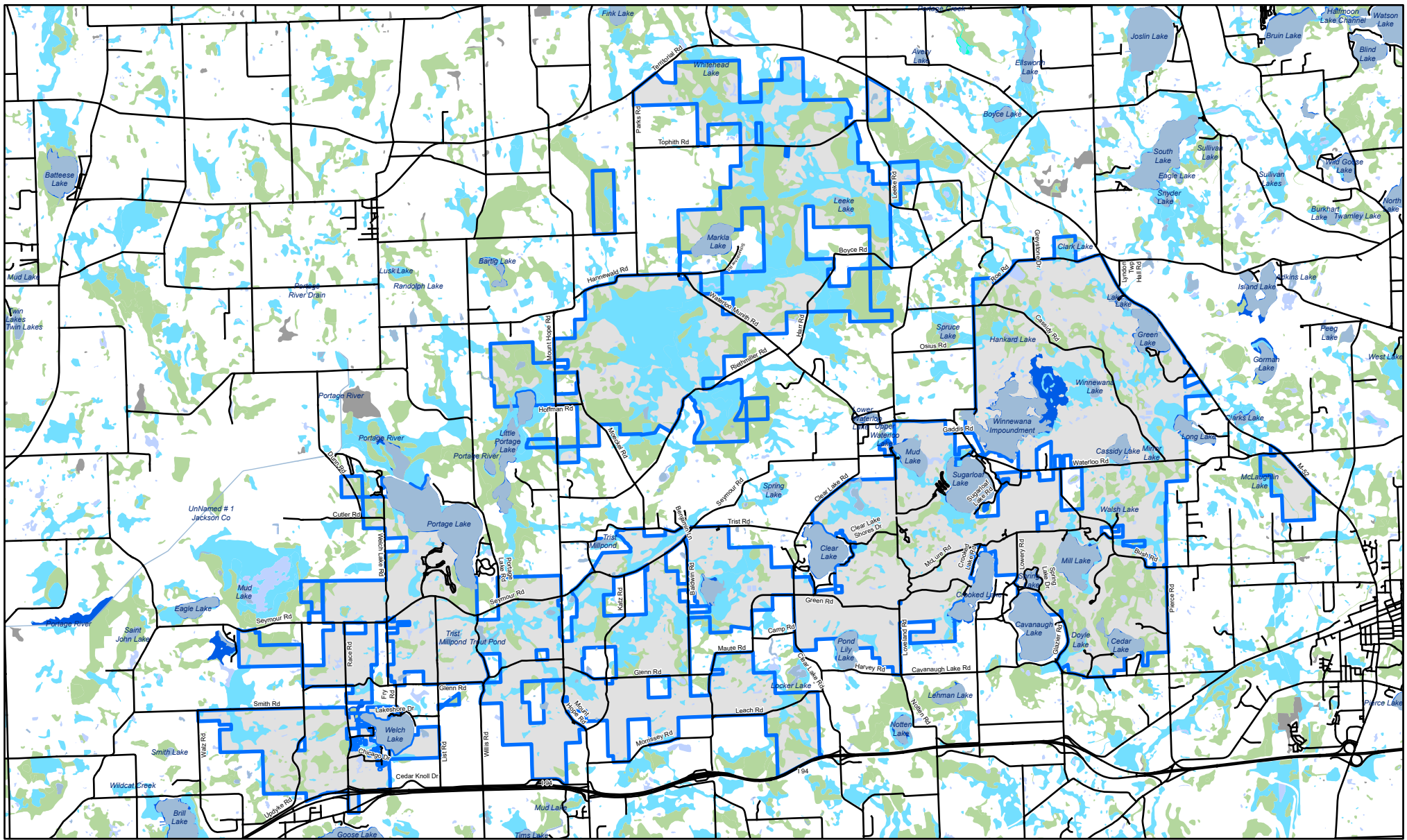
— Roads
 Lakes and Rivers
 Waterloo Recreation Area Boundary

Michigan Lidar Digital Elevation Model
 Value
 High : 1884.98
 Low : 288.866

MICHIGAN DEPARTMENT OF NATURAL RESOURCES
PARKS AND RECREATION DIVISION

Updated: 10/02/2024 by A. Ihnken



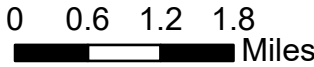


Waterloo State Recreation Area Wetlands

Roads	Wetlands*	Freshwater Pond
Lakes and Rivers	Freshwater Emergent Wetland	Lake
Waterloo Recreation Area Boundary	Freshwater Forested/Shrub Wetland	Other
		Riverine

MICHIGAN DEPARTMENT OF NATURAL RESOURCES
PARKS AND RECREATION DIVISION

Updated: 10/02/2024 by A. Ihnken



*National Wetlands Inventory (NWI) dataset (2012)