

Sediment Sampling in the Detroit and Rouge Rivers

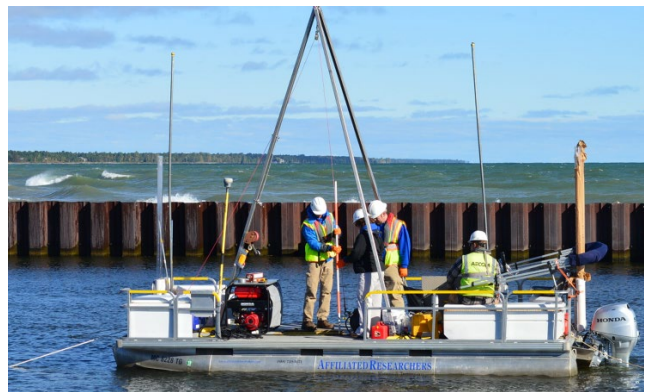
An effort to gather data on the nature and extent of the chemical contamination in the sediments of the Detroit and Rouge Rivers is underway. These rivers have a long history of industrial development that has left a legacy of pollution which remains in the sediments on the bottom of the river.

Through the months of September and October, scientists will be on the Detroit River in the area of the Trenton Channel and on the lower Rouge River to gather samples for analysis.

Three types of samples will be taken:

Vibracore Samples

A vibracore sample uses vibration to push the sampling tube into the river bottom to collect a continuous sample of water-saturated sediment from deeper sediments.



Ponar Samples

Ponar sampling collect sediment from the surface of the riverbed.



Sediment Trap

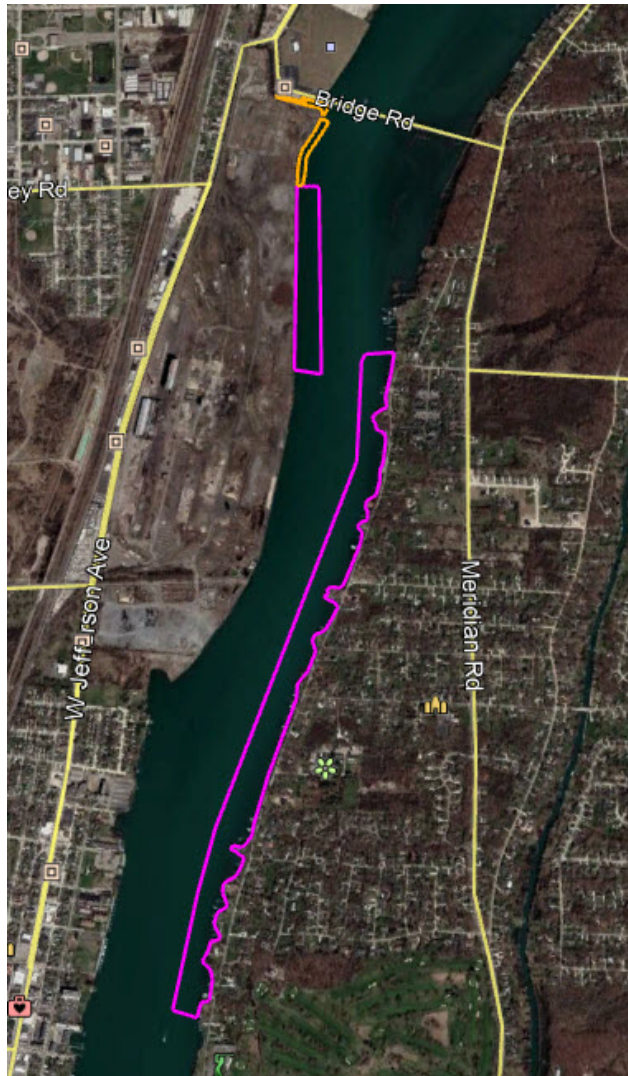
A sediment trap is bowl-like device 2-3 feet in diameter that is placed on the river bottom and will collect sediment as it is deposited over 2-3 weeks.



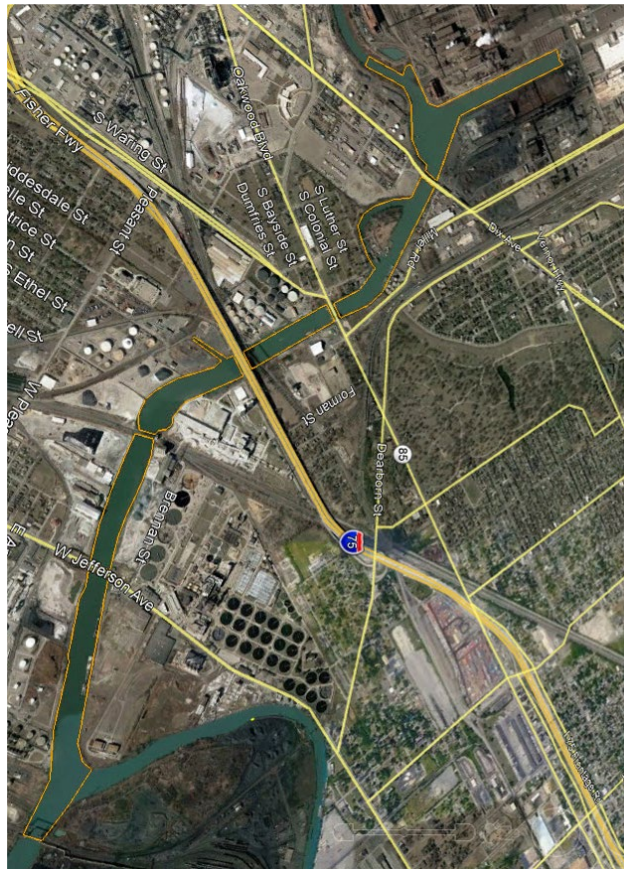
Sampling Areas

Vibracore and ponar samples will be taken at 25 locations on the Detroit River and 75 locations on the Rouge River, while sediment trap sampling will occur at an additional 6 locations on the Detroit River and 8 locations on the Rouge River.

Detroit River Sampling Area



Rouge River Sampling Area



Have more questions?

Contact Sam Noffke, EGLE Aquatic Biologist, at NoffkeS@Michigan.gov or 517-755-7173

The sampling work is led by the Michigan Department of Environment, Great Lakes, and Energy through the contract firm EA Engineering, Science, and Technology (MI) PLC and its affiliate, EA Science and Technology, and in collaboration with the US Environmental Protection Agency using funding from the Great Lakes Restoration Initiative.



EGLE does not discriminate on the basis of race, sex, religion, age, national origin, color, marital status, disability, political beliefs, height, weight, genetic information, or sexual orientation in the administration of any of its programs or activities, and prohibits intimidation and retaliation, as required by applicable laws and regulations.

To request this material in an alternative format, contact EGLE-Accessibility@Michigan.gov or call 800-662-9278.