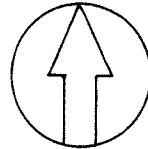


ARBOR HEIGHTS SUB'N. NO. 2

OF PART OF THE S.W. 1/4 OF SEC. 19, T.2S., R.6E.

CITY OF ANN ARBOR, WASHTENAW CO. MICH.

SCALE: 1 INCH = 100 FEET
All dimensions are given in feet and decimals thereof
All curvilinear dimensions are given along the arc
SHEET 1 OF 2 SHEETS



EDWIN M. ORR
LAND SURVEYOR
ANN ARBOR, MICHIGAN

DESCRIPTION

The land embraced in the annexed plat of "ARBOR HEIGHTS SUB'N. NO. 2 OF PART OF THE S.W. 1/4 OF SEC. 19, T.2 S., R.6 E., CITY OF ANN ARBOR, WASHTENAW CO., MICH." is described as follows: Beginning at the N.W. corner of Arbor Heights, a subdivision in the City of Ann Arbor, Washtenaw Co., Mich. as recorded in L.10 P.53 of Washtenaw Co. plat, said point of beginning being distant from the S. 1/4 corner of said Sec. 19, T.2 S., R.6 E. 36 min. 50 sec. W. along the S. line of said Sec. 19, 1358.16 ft. to the S.W. corner of said Arbor Heights Sub. and thence N. 0 deg. 12 min. 20 sec. E. along the West line of said Arbor Heights Sub. 820.98 ft.; thence from said point of beginning N. 0 deg. 10 min. 10 sec. E. 1684.75 ft. to the center line of Miller Road; thence S. 60 deg. 55 min. 40 sec. E. along the said center line of Miller Road 760.60 ft.; thence S. 29 deg. 04 min. 20 sec. W. 180.00 ft.; thence S. 60 deg. 55 min. 40 sec. E. 70.00 ft.; thence South 803.43 ft.; thence S. 32 deg. 39 min. 00 sec. W. 127.51 ft.; thence S. 0 deg. 23 min. 10 sec. W. 200.00 ft. to a point on a North line of said Arbor Heights Sub.; thence N. 89 deg. 36 min. 50 sec. W. along a northerly line of said Arbor Heights Sub. 190.00 ft.; thence S. 0 deg. 43 min. 00 sec. W. along a westerly line of said Arbor Heights Sub. 30.00 ft.; thence N. 89 deg. 36 min. 50 sec. W. along a northerly line of said Arbor Heights Sub. 240.29 ft.; thence N. 0 deg. 12 min. 20 sec. E. along an easterly line of said Arbor Heights Sub. 30.00 ft.; thence N. 89 deg. 36 min. 50 sec. W. along a northerly line of said Arbor Heights Sub. 183.73 ft. to the point of beginning.

DEDICATION

KNOW ALL MEN BY THESE PRESENTS, That we, F. Everett Ross and Iva L. Ross, his wife, as proprietors, have caused the land embraced in the annexed plat to be surveyed, laid out, and platted, to be known as "ARBOR HEIGHTS SUB'N. NO. 2 OF PART OF THE S.W. 1/4 OF SEC. 19, T.2 S., R.6 E., CITY OF ANN ARBOR, WASHTENAW CO., MICH." and that the streets as shown on said plat are hereby dedicated to the use of the public, and that the easements indicated on said plat are hereby reserved for the use of public utilities, and that no permanent structures are to be erected within the lines of said easements.

Signed and Sealed

In presence of:

R. Duncan Hole
D. Bruce Hole

F. Everett Ross
Iva L. Ross

ACKNOWLEDGMENT

STATE OF MICHIGAN }
County of Washtenaw }

On this 19 day of June 1950 before me, a Notary Public in and for said county, personally came the above named F. Everett Ross and Iva L. Ross, his wife, known to me to be the persons who executed the above dedication, and acknowledged same to be their free act and deed.

Edwin M. Orr
Clerk of Court
Notary Public, Washtenaw Co., Mich.
My commission expires May 12, 1952

SURVEYOR'S CERTIFICATE

I hereby certify that the plat hereon delineated is a correct one and that permanent metal monuments consisting of bars not less than one-half inch in diameter and 48 inches in length, encased in a concrete cylinder at least four inches in diameter and 48 inches in depth have been placed at points marked thus (o) as thereon shown at all angles in the boundaries of the land platted, at all the intersections of streets, and at the intersections of streets with the boundaries of the plat as shown on said plat.

Edwin M. Orr
Edwin M. Orr, Registered Land Surveyor

CERTIFICATE OF MUNICIPAL APPROVAL

This plat was approved by the Common Council of the City of Ann Arbor at a meeting held August 7, 1950

Fred J. Looker
Fred J. Looker, Clerk

ARBOR HEIGHTS SUB'N LIO-P53

ARBOR HEIGHTS SUB'N. NO. 2

OF PART OF THE S.W. 1/4 OF SEC. 19, T. 2 S., R. 6 E.
CITY OF ANN ARBOR, WASHTENAW CO. MICH.

SHEET 2 OF 2 SHEETS

EDWIN M. ODD
D.E. LAND SURVEYOR
DEARBORN, MICHIGAN

CERTIFICATE OF APPROVAL BY THE CITY PLANNING COMMISSION

This plat was approved by the Planning Commission
of the City of Ann Arbor at a meeting held April 26th,
1950.

John R. McMullen
John R. McMullen, Chairman
Frederick H. Mcumber
Frederick H. Mcumber, Secretary

CERTIFICATE OF APPROVAL BY THE BOARD OF PUBLIC WORKS

This plat was approved by the Board of Public Works
of the City of Ann Arbor at a meeting held August 4th,
1950.

Fred J. Locker
Fred J. Locker, Clerk

COUNTY TREASURER CERTIFICATE OFFICE OF COUNTY TREASURER, WASHTENAW COUNTY

I hereby certify that there are no tax liens on titles
held by the State on the lands described herein, and that
there are no tax liens or titles held by individuals on such
lands for the five years preceding the 25th day
of August, 1950, and that the taxes for said period
of five years are all paid, as shown by the records of this
office except _____.

_____ This certificate
does not apply to taxes, if any, now in process of collection
by township, city, or village collecting offices.

W. F. Verner
County Treasurer
W. F. Verner

APPROVAL BY BOARD OF COUNTY AUDITORS

Approved by the Board of County Auditors of Washtenaw
County, Michigan, this 1st day of September,
1950.

J. Martin Rompp
John G. Chaff

I HEREBY CERTIFY THAT THIS COPY IS
A TRUE COPY OF THE MAP OR PLAT
FORWARDED THE REGISTER OF DEEDS
FOR RECORDING.

COPY
Register's Office
Washtenaw County, Michigan
Plat of Arbor Heights Sub'n. No. 2
City of Ann Arbor
was Recorded this 25th day of
August, 1950 at 10 o'clock
P. M. in Liber 11 of Grounds
on Page 1-16
ORIGINAL ON FILE
Register of Deeds

COMPARED 11/14/50
Mayne Jewell Purdy
Mayne Jewell Purdy, DEPUTY AUDITOR GENERAL

Examined and Approved

Mayne Jewell Purdy
Mayne Jewell Purdy, DEPUTY AUDITOR GENERAL

FILED IN AUDITOR GENERAL'S DEPT.

Mayne Jewell Purdy
Mayne Jewell Purdy, DEPUTY AUDITOR GENERAL

JUL 7 1954

Sheet 2 of 2

ARBOR HEIGHTS No 3

A SUBDIVISION OF PART OF THE E 1/2 OF THE SW 1/4 OF SECTION 19, TOWN 2 SOUTH, RANGE 6 EAST, CITY OF ANN ARBOR, WASHTENAW COUNTY, MICHIGAN



ALL DIMENSIONS IN FEET AND DECIMALS THEREOF
ALL DIMENSIONS ON CURVES ARE ARC LENGTHS

DEDICATION

KNOW ALL MEN BY THESE PRESENTS, that we, F. Everett Ross and Iva L. Ross, his wife and Arbor Heights Building Corp. a Michigan corporation by S. Brooks Barron, President and Thomas A. Gallagher, Secretary as proprietors, have caused the land embraced in the annexed plat to be surveyed, laid out and platted, to be known as, ARBOR HEIGHTS, No. 3, a subdivision of part of the E 1/2 of the SW 1/4 of Section 19, Town 2 South, Range 6 East, City of Ann Arbor, Washtenaw County, Michigan and that the streets and alleys as shown on said plat are hereby dedicated to the use of the public.

Signed and Sealed in the presence of
Marie M. Carter (Witness)
F. Everett Ross
Marie M. Carter (Witness)
Iva L. Ross

Arbor Heights Building Corp.

S. Brooks Barron President
Thomas A. Gallagher Secretary

ACKNOWLEDGMENT

STATE OF MICHIGAN
County of Washtenaw
On this 18th day of May, 1954, before me, a Notary Public in and for said County, personally came the above named F. Everett Ross and Iva L. Ross known to me to be the persons who executed the above dedication, and acknowledged the same to be their free act and deed.
Marie M. Carter (Witness)
F. Everett Ross
My Commission expires April 18, 1955

ACKNOWLEDGMENT

STATE OF MICHIGAN
County of Washtenaw
On this 18th day of May, A.D. 1954, before me, a Notary Public in and for said County appeared S. Brooks Barron and Thomas A. Gallagher to me personally known, who being each by me duly sworn did say that they are the President and Secretary respectively of the Arbor Heights Building Corp. a Michigan corporation, and that the seal affixed to said instrument is the corporate seal of said corporation and that said instrument was signed and sealed in behalf of said corporation by authority of its Board of Directors and the said S. Brooks Barron and Thomas A. Gallagher acknowledged said instrument to be the free act and deed of said corporation.
Marie M. Carter (Witness)
S. Brooks Barron
My Commission expires April 18, 1955

DESCRIPTION OF LAND PLATTED

The land embraced in the annexed plat of ARBOR HEIGHTS No. 3, a subdivision of part of the E 1/2 of the SW 1/4 of Section 19, Town 2 South, Range 6 East, City of Ann Arbor, Michigan is described as follows: Commencing at the center of Section 19, Town 2 South, Range 6 East, City of Ann Arbor, Michigan, thence S 0° 41' 30" W. 922.13 feet for a place of beginning, thence S 0° 41' 30" W. 1181.45 feet, thence N 89° 25' 30" W. 115.17 feet, thence N. 0° 45' E. 5.0 feet, thence N. 89° 25' 30" W. 180.89 feet, thence N. 0° 32' 30" E. 150.0 feet, thence N. 89° 25' W. 32.98 feet, thence N. 68° 32' 30" W. 239.18 feet, thence N. 89° 25' 30" W. 198.77 feet, thence N. 0° 49' 30" E. 199.85 feet, thence N. 12° 27' E. 127.43 feet, thence N. 0° 18' E. 802.69 feet, thence N. 60° 45' W. 70.0 feet, thence N- 20° 15' E. 180.0 feet, thence S. 60° 45' E. 802.30 feet to the place of beginning.

MUNICIPAL APPROVAL

This plat was approved by the Common Council of the City of Ann Arbor at a meeting held June 24, 1954
Fred J. Looker (Chair)

CERTIFICATE OF APPROVAL BY THE CITY PLANNING COMMISSION

This plat was approved by the Planning Commission of the City of Ann Arbor, Michigan, at a meeting held on the 25th day of May, 1954.
John E. Swisher, Jr. Chairman
Sybil K. Bennett Secretary

SURVEYOR'S CERTIFICATE

I hereby certify that the plat herein delineated is a correct one and that permanent metal monuments consisting of bars not less than one-half inch in diameter and 48 inches in length, or shorter bars of not less than one-half inch in diameter tapered over each other at least 6 inches with a cross-sectional length of not less than 48 inches, secured in a concrete cylinder at least 6 inches in diameter and 48 inches in depth have been placed at points marked thus (P...) as thereon shown at all angles to the boundaries of the land platted, and at the intersections of streets, intersections of alleys, or of streets and alleys, and at the intersections of streets and alleys with the boundaries of the plat as shown on said plat.
Herbert B. Hicks
Registered Land Surveyor, or Registered Professional Engineer
Herbert B. Hicks, No. 1715

MUNICIPAL APPROVAL

This plat was approved by the Board of Public Works of the City of Ann Arbor at a meeting held June 9, 1954
Fred J. Looker (Chair)

APPROVAL BY COUNTY PLAT BOARD

This plat was approved on the 25th day of May, 1954, by the Washtenaw County Plat Board
Thomas A. Fitzgerald (County Register of Deeds)
J. Martin Rempp Auditor
Adolph F. Gross Auditor
Herbert G. Loufing Auditor

COUNTY TREASURER'S CERTIFICATE

Office of County Treasurer, Washtenaw County.
I hereby certify, that there are no tax liens or taxes held by the State on the lands described herein, and that there are no tax liens or taxes held by individuals on said lands, for the five years preceding the 25th day of May, 1954, and that the taxes for said period of five years are all paid, as shown by the records of this office.
This certificate does not apply to taxes, if any, now in process of collection by township, city or village collecting officers.
W. F. Varner (County Treasurer)

COPY
Register's Office
Washtenaw County
Plat of Arbor Heights No 3
City of Ann Arbor
was Recorded this 25th day of May, A.D. 1954, at 10 o'clock A. M. in Liber 12 of Plats
in Page 21-22
Thomas A. Fitzgerald
C. M. Loufing Dip.

I hereby certify that this map is a true copy of the map as filed in the Register of Deeds for recording.
Date July 7, 1954
Filed in Arbor Heights No 3
Date July 12, 1954
Examined and Approved
Date July 7, 1954
John E. Swisher, Jr.
Sybil K. Bennett

RECEIVED
ANN ARBOR
ENGINEERING
FEB 15 1999

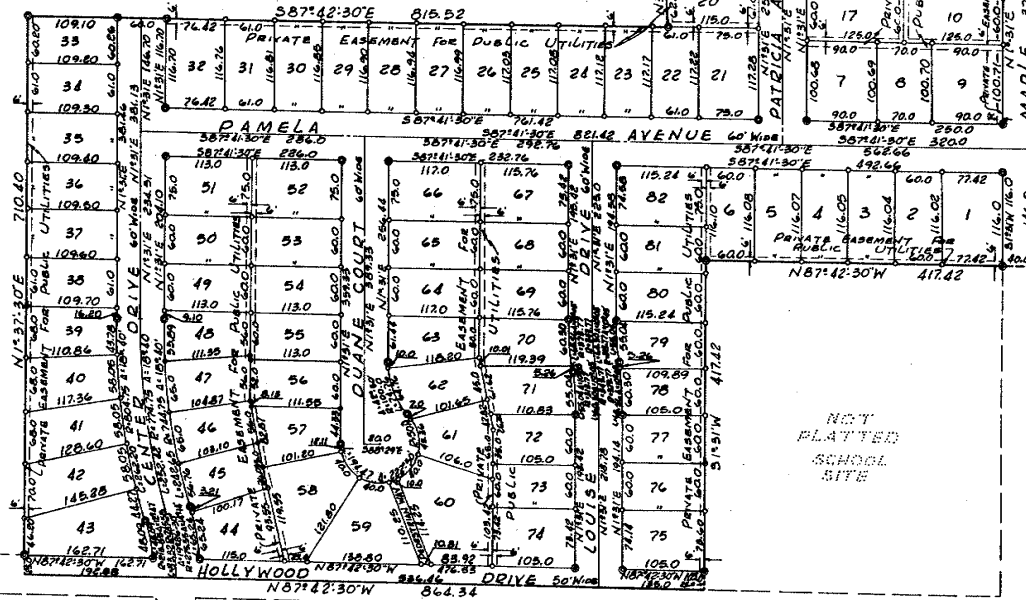
HOLLYWOOD PARK
A SUBDIVISION OF PART OF THE SE 1/4 OF SECTION 24, T28S, R5E,
CITY OF ANN ARBOR, WASHTENAW COUNTY, MICHIGAN

0 100 200 300
SCALE: 1"=100'

ALL DIMENSIONS IN FEET AND DECIMALS THEREOF
ALL DIMENSIONS ON CURVES ARE ARC LENGTHS
SURVEY BY ATWELL-MICKS, INC.



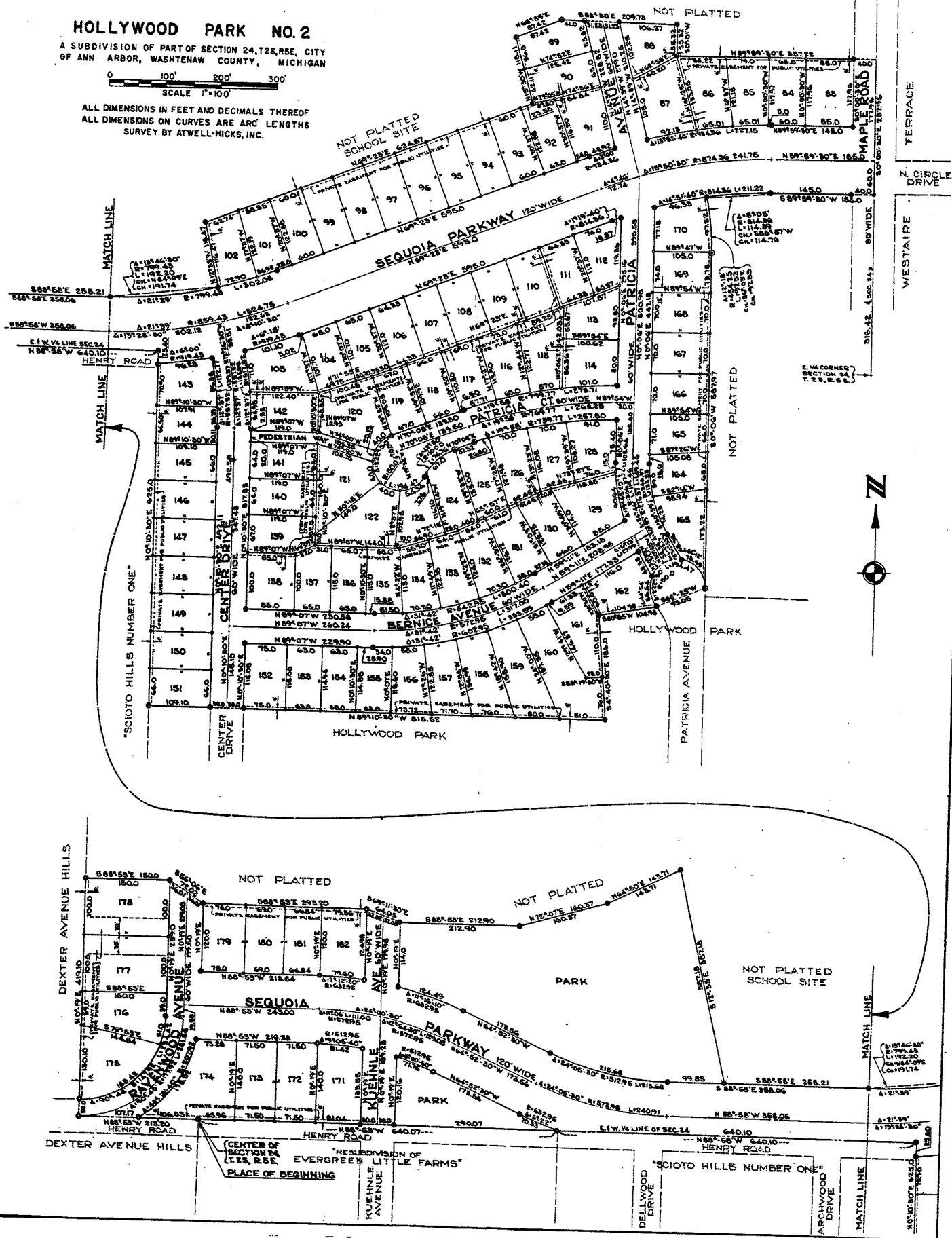
SC1070 HILLS NO.1



SC1070 HILLS NO.1

A SUBDIVISION OF PART OF SECTION 24, T2S, R5E, CITY
OF ANN ARBOR, WASHTENAW COUNTY, MICHIGAN

ALL DIMENSIONS IN FEET AND DECIMALS THEREOF
ALL DIMENSIONS ON CURVES ARE ARC LENGTHS
SURVEY BY ATWELL-HICKS, INC.



HOLLYWOOD PARK NO. 2

A SUBDIVISION OF PART OF SECTION 24, T2S, R5E, CITY OF ANN ARBOR, WASHTENAW COUNTY, MICHIGAN

0 100' 200' 300'
SCALE 1"=100'

DEDICATION

KNOW ALL MEN BY THESE PRESENTS, that we Daniel Young and Martha Young, his wife, Daniel Allen Laven and Elsie Laven, his wife, Frank J. Kennedy and Frances Kennedy, his wife, and Dorothy G. Kennedy, Divorcee, as proprietors and the Daniel Young Building Company, a Michigan Corporation by Daniel Young, President and Martha Young, Secretary-Treasurer, have caused the land embraced in the annexed plat to be surveyed, laid out and platted, to be known as HOLLYWOOD PARK NO. 2 a subdivision of part of Section 24, T2S, R5E, City of Ann Arbor, Washtenaw County, Michigan and that the Avenues, Court, Drive, Road, Parkway, Pedestrian Way and Parks as shown on said plat are hereby dedicated to the use of the public.

Signed and Sealed in the Presence of:

Niklos Weber	Witness	Daniel Young
Helen Adcock	Witness	Martha Young
Niklos Weber	Witness	Daniel Allen Laven
Niklos Weber	Witness	Elsie Laven
Thomas J. Keott	Witness	Frank J. Kennedy
Thomas J. Keott	Witness	Frances Kennedy

Signed and Sealed in the Presence of:

Niklos Weber	Witness	Daniel Young, President
Helen Adcock	Witness	Martha Young, Secretary-Treasurer
Kenneth C. Krull	Witness	Dorothy G. Kennedy

ACKNOWLEDGMENT

STATE OF MICHIGAN)
County of Washtenaw) ss.
On this 23rd day of March, A.D., 1961, before me, a Notary Public in and for said County, personally came the above named Daniel Young, Martha Young, Frank J. Kennedy, and Frances Kennedy, known to me to be the persons who executed the above dedication and acknowledged the same to be their free act and deed.
Robert E. Luedke
Notary Public, Washtenaw County, Michigan
My Commission expires March 24, 1964

ACKNOWLEDGMENT

STATE OF Michigan)
County of Washtenaw) ss.
On this 23rd day of March, A.D., 1961, before me, a Notary Public in and for said County, personally came the above named Daniel Allen Laven and Elsie Laven, known to me to be the persons who executed the above dedication and acknowledged the same to be their free act and deed.
Niklos Weber
Notary Public, Washtenaw County, Michigan
My Commission expires March 24, 1964

ALL DIMENSIONS IN FEET AND DECIMALS THEREOF
ALL DIMENSIONS ON CURVES ARE ARC LENGTHS
SURVEY BY ATWELL-HICKS, INC.

ACKNOWLEDGMENT

STATE OF MICHIGAN)
County of Washtenaw) ss.
On this 24th day of March, A.D., 1961, before me, a Notary Public in and for said County, appeared Daniel Young and Martha Young to me personally known, who being each by me duly sworn, did say that they are the President and Secretary-Treasurer respectively of the Daniel Young Building Company, a Michigan Corporation, and that the seal affixed to said instrument is the Corporate Seal of said Corporation and that said instrument was signed and sealed in behalf of said Corporation by authority of its Board of Directors and the said Daniel Young and Martha Young acknowledged said instrument to be the free act and deed of said Corporation.

Niklos Weber
Notary Public, Washtenaw County, Michigan
My Commission expires March 24, 1964

DESCRIPTION OF LAND PLATTED

The land embraced in the annexed plat of HOLLYWOOD PARK NO. 2 a subdivision of part of Section 24, T2S, R5E, City of Ann Arbor, Washtenaw County, Michigan is described as follows:
Commencing at the center of Section 24, T2S, R5E, City of Ann Arbor, Washtenaw County, Michigan; thence along the E & W 1/2 line of said Section 24, N 88°-53' W 213.20 feet; thence N 0°-19' E 419.10 feet; thence S 88°-53' E 150.0 feet; thence S 56°-06' E 72.02 feet; thence S 88°-53' E 293.20 feet; thence S 69°-11' W 64.05 feet; thence S 88°-53' E 212.90 feet; thence N 75°-07' E 160.37 feet; thence N 64°-50' E 143.71 feet; thence S 12°-35' E 387.18 feet; thence S 88°-53' E 258.21 feet; thence 192.20 feet in the arc of a circular curve concave to the North, radius 799.43 feet, chord N 84°-09' E 191.74 feet; thence N 12°-33' W 116.47 feet; thence N 69°-23' E 624.87 feet; thence N 15°-30' W 118.11 feet; thence N 68°-39' E 87.42 feet; thence S 88°-53' E 209.73 feet; thence S 0°-01' W 55.32 feet; thence N 89°-59' W 357.22 feet; thence S 0°-00' W 237.96 feet; thence along the east line of said Section 24; thence S 89°-59' W 185.0 feet; thence 114.89 feet in the arc of a circular curve concave to the South, radius 814.36 feet, chord S 85°-57' W 114.76 feet; thence 97.52 feet in the arc of a circular curve concave to the West, radius 454.25 feet, chord S 6°-03' E 97.33 feet; thence S 0°-06' W 587.97 feet; thence 194.47 feet in the arc of a circular curve concave to the SE, radius 50.0 feet, chord S 68°-35' W 93.05 feet; thence S 80°-55' W 104.98 feet; thence S 4°-40' W 186.0 feet; thence N 89°-10' W 815.52 feet; thence N 0°-10' W 625.0 feet; thence N 88°-58' W 640.10 feet along the E & W 1/2 line of said Section 24; thence continuing along said E & W 1/2 line, N 88°-53' W 640.07 feet to the Place of Beginning, containing 99 lots numbered 83 through 182 inclusive and 2 Parks.

SURVEYOR'S CERTIFICATE

I hereby certify that the plat hereon delineated is a correct one and that permanent metal monuments consisting of bars not less than a one-half inch in diameter and 36 inches in length, or shorter bars of not less than one-half inch in diameter lapped over each other at least 6 inches within over-all length of not less than 36 inches, encased in a concrete cylinder at least 4 inches in diameter and 36 inches in depth have been placed at points marked thus (⊙) as thereon shown at all angles in the boundaries of the land platted, at all the intersections of streets, intersections of alleys, or of streets and alleys, and at the intersections of streets and alleys with the boundaries of the plat as shown on said plat.

Gordon T. Hodgson
Registered Land Surveyor # 10061

ACKNOWLEDGMENT

STATE OF)
County of Washtenaw) ss.
On this 24th day of March, A.D., 1961, before me, a Notary Public in and for said County, personally came the above named Dorothy G. Kennedy, known to me to be the person who executed the above dedication and acknowledged the same to be her free act and deed.
Niklos Weber
Notary Public, Washtenaw County, Michigan
My Commission expires March 24, 1964

CERTIFICATE OF APPROVAL BY THE CITY PLANNING COMMISSION

This plat was approved by the Planning Commission of the City of Ann Arbor, Michigan at a meeting held on the 22nd day of April, 1961.
I hereby certify this copy is a true copy of the original as forwarded the Registrar of Deeds for recording.
Date May 4, 1961
FILED IN ALBION GENERAL'S DEPT.
Date May 9, 1961
EXAM. AND APPROVED
Date May 4, 1961
By Richard A. Ware, Chairman
William J. Boff, Secretary

CERTIFICATE OF MUNICIPAL APPROVAL

This plat was approved by the Common Council of the City of Ann Arbor at a meeting held April 12, 1961, and the width of lots is in compliance with requirements of Section 30, Act 172, of 1929, as amended.
Fred J. Lohrer, Clerk

SECURITY TREASURER'S CERTIFICATE

I hereby certify, that there are no tax liens or titles held by the State on the lands described hereon, and that there are no tax liens or titles held by individuals on said lands for the five years preceding the 22nd day of April, 1961, and that the taxes for said period of five years are all paid, as shown by the records of this office.
This certificate does not apply to taxes, if any, now in process of collection by township, city or village collecting officers.
W.F. Verner, (County Treasurer)

APPROVAL BY COUNTY PLAT BOARD

This plat was approved on the 23rd day of April, 1961, by the Washtenaw County Plat Board.
Patricia Newkirk Hardy
John H. Flook
(County Register of Deeds) (County Admin Commissioner)
J. Martin Rempp
Herbert G. Lowmiller
(Auditor) (Auditor)
John P. Cook
(Auditor)

COPY
HOLLYWOOD PARK NO. 3

A SUBDIVISION OF PART OF THE NW/2 OF SECTION 24, T2S, R5E, CITY
OF ANN ARBOR, WASHTENAW COUNTY, MICHIGAN.

0 100' 200' 300'
SCALE 1"=100'

ALL DIMENSIONS IN FEET AND DECIMALS THEREOF.
ALL DIMENSIONS ON CURVES ARE ARC LENGTHS.
SURVEY BY ATWELL-HICKS, INC.

NOT PLATTED

NOT PLATTED

HOLLYWOOD PARK NO. 2

OUTLOT A

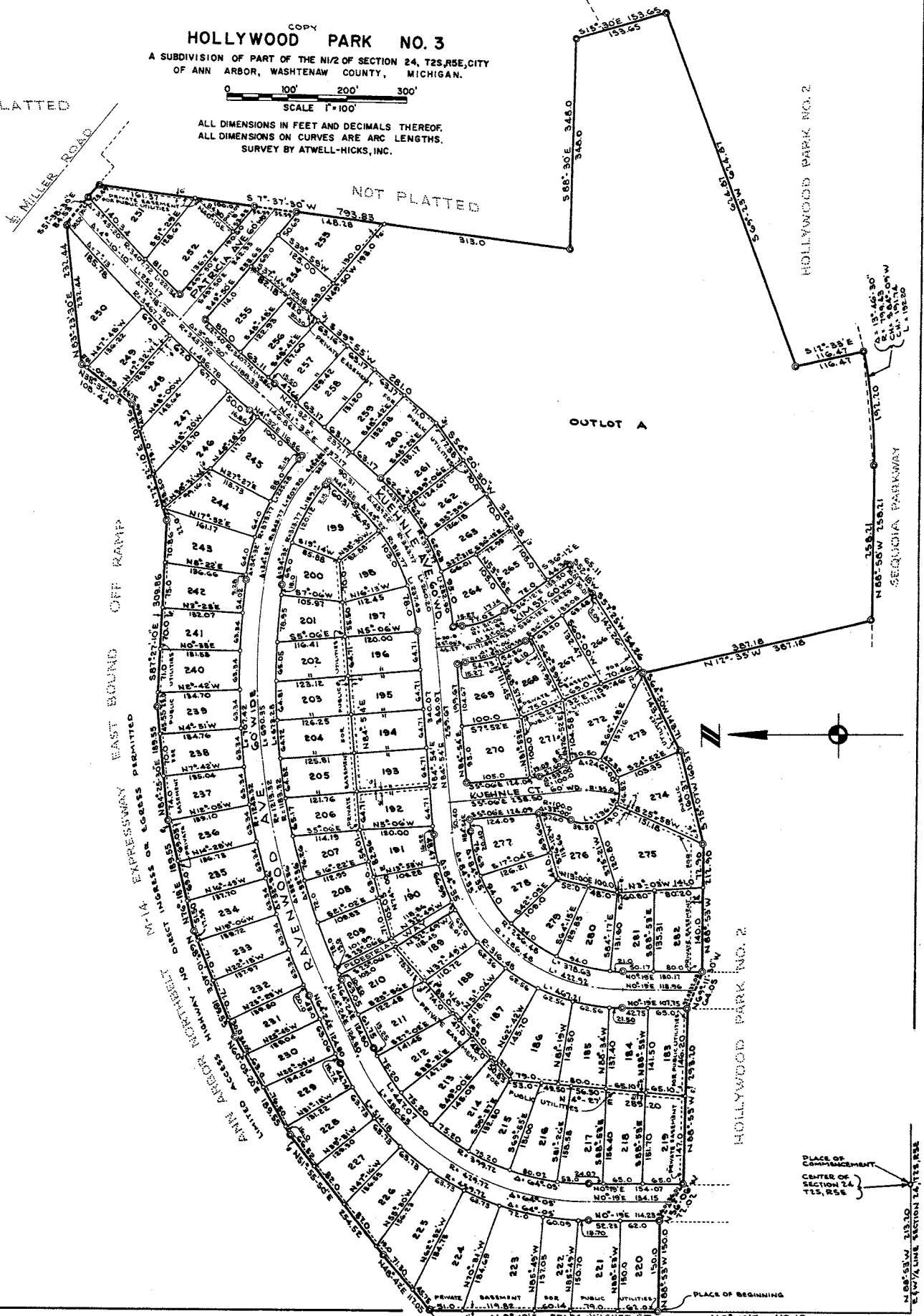
SEQUOIA PARKWAY

HOLLYWOOD PARK NO. 2

PLACE OF
COMMENCEMENT
CENTER OF
SECTION 24,
T1S, R5E

PLACE OF BEGINNING

ST. NO. 19'E 419.10
DEXTER AVENUE HILLS



HOLLYWOOD PARK NO. 3

A SUBDIVISION OF PART OF THE N1/2 OF SECTION 24, T28N, R56E, CITY OF ANN ARBOR, WASHTENAW COUNTY, MICHIGAN.



ALL DIMENSIONS IN FEET AND DECIMALS THEREOF
ALL DIMENSIONS ON CURVES ARE ARC LENGTHS.
SURVEY BY ATWELL-HICKS, INC.

DEDICATION

KNOW ALL MEN BY THESE PRESENTS, that we Martha Young, Daniel Allen Laven and Elsie Laven, his wife, the Public Schools of the City of Ann Arbor, a Michigan Corporation, by Albert J. Coudron, President, and George Balas, Secretary, by Martha Young Building Company, a Michigan Corporation, by Martha Young President and Charles A. Hoffman, Secretary-Treasurer as proprietors have caused the land embraced in the annexed plat to be surveyed, laid out and platted, to be known as HOLLYWOOD PARK NO. 3 a subdivision of part of the N 1/2 of Section 24, T28, N5E, City of Ann Arbor, Washtenaw County, Michigan and that the Avenues, Court, Street and Pedestrian Way as shown on said plat are hereby dedicated to the public and the easements indicated on said plat are not dedicated to the public but reserved for public utilities and any other use designated hereon and no permanent structures are to be located within said easement.

Signed in the Presence of:

Frances E. Carstens *Martha Young*
Frances E. Carstens, Witness Martha Young
James O. Kelly *Daniel Allen Laven*
James O. Kelly, Witness Daniel Allen Laven
Albert J. Coudron *Elsie Laven*
Albert J. Coudron, President Elsie Laven
333 Covington Ave., Detroit 3, Mich.

Signed and Sealed in the Presence of:

Jack Elway *George Balas*
Jack Elway, Witness George Balas, Secretary
Gerald R. Neff *Charles A. Hoffman*
Gerald R. Neff, Witness Charles A. Hoffman, Secretary-Treasurer

Signed and Sealed in the Presence of:

Frances E. Carstens *Martha Young*
Frances E. Carstens, Witness Martha Young President
James O. Kelly *Charles A. Hoffman*
James O. Kelly, Witness Charles A. Hoffman, Secretary-Treasurer

DESCRIPTION OF LAND PLATTED

The land embraced in the annexed plat of HOLLYWOOD PARK NO. 3 a subdivision of part of the N 1/2 of Section 24, T28, N5E, City of Ann Arbor, Washtenaw County, Michigan is described as follows:
Commencing at the center of Section 24, T28, N5E, City of Ann Arbor, Washtenaw County, Michigan; thence along the E 1/2 line of said Section 24, N 88°-53' W 213.28 feet; thence N 0°-15' E 419.10 feet to the PLACE OF BEGINNING; thence continuing N 0°-19' E 371.96 feet; thence N 48°-42' E 117.05 feet; thence N 51°-55'-50" E 254.52 feet; thence N 60°-03'-20" E 189.55 feet; thence N 68°-10'-40" E 185.55 feet; thence N 76°-18' E 189.55 feet; thence N 84°-25'-30" E 189.55 feet; thence S 87°-27'-10" E 393.84 feet; thence N 72°-32'-10" E 201.36 feet; thence N 38°-32'-10" E 108.44 feet; thence N 83°23'-30" E 232.44 feet; thence S 1°-38'-30" E 84.53 feet; thence S 7°-35'-30" W 793.83 feet; thence S 88°-38' E 348.60 feet; thence S 15°-39' E 153.65 feet; thence S 69°-23' W 424.87 feet; thence S 12°-33' E 116.47 feet; thence Westerly 192.20 feet along the arc of a circular curve concave to the North, radius 793.43 feet, chord thence N 12°-35' W 387.18 feet; thence S 64°-50' W 143.71 feet; thence S 75°-07' W 160.37 feet; thence N 88°-53' W 212.90 feet; thence N 69°-11'-15" W 64.05 feet; thence N 88°-53' W 293.20 feet; thence N 58°-04' W 72.02 feet; thence N 88°-53' W 150.00 feet to the Place of Beginning, containing 100 lots numbered 183 through 282 inclusive and two Outlots lettered A and B.

ACKNOWLEDGMENT

STATE OF MICHIGAN) ss.
County of Washtenaw)
On this... day of February... A.D., 1942 before me, a Notary Public in and for said County, personally came the above named Martha Young, Daniel Allen Laven and Elsie Laven, known to me to be the persons who executed the above dedication and acknowledged the same to be their free act and deed.
James O. Kelly
James O. Kelly, Notary Public in and for said County, Michigan
My Commission expires... 27, 1948

ACKNOWLEDGMENT

STATE OF MICHIGAN) ss.
County of Washtenaw)
On this... day of February... A.D., 1942 before me, a Notary Public in and for said County appeared Albert J. Coudron and George Balas to me personally known, who being each by me duly sworn, did say that they are the President and Secretary respectively of the Public Schools of the City of Ann Arbor a Michigan Corporation, and that the seal affixed to said instrument is the corporate seal of said Corporation by authority of its Board of Education and the said Albert J. Coudron and George Balas acknowledged said instrument to be the free act and deed of said corporation.
Thad Carr
Thad Carr, Notary Public in and for said County, Michigan
My Commission expires... 27, 1942

ACKNOWLEDGMENT

STATE OF MICHIGAN) ss.
County of Washtenaw)
On this... day of February... A.D., 1942 before me, a Notary Public in and for said County appeared Martha Young and Charles A. Hoffman to me personally known, who being each by me duly sworn, did say that they are the President and Secretary-Treasurer respectively of the Daniel Young Building Company, a Michigan Corporation, and that the seal affixed to said instrument is the Corporate Seal of said Corporation and that said instrument was signed and sealed in behalf of said Corporation by authority of its Board of Directors and the said Martha Young and Charles A. Hoffman acknowledged said instrument to be the free act and deed of said Corporation.
James O. Kelly
James O. Kelly, Notary Public in and for said County, Michigan
My Commission expires... 27, 1948

CERTIFICATE OF MUNICIPAL APPROVAL

This plat was approved by the Common Council of the City of Ann Arbor at a meeting held...
DATE
Fred J. Lohrer, Clerk

APPROVED
DATE
Fred J. Lohrer, Clerk
STATE HIGHWAY COMMISSIONER

CERTIFICATE AS TO STATE TRUNK LINE OR FEDERAL AID ROADS

We hereby certify that said plat appears to include land located on a state trunk line or federal aid road.
Patricia Newkirk Hardy *J. Martin Remp*
Patricia Newkirk Hardy, County Register of Deeds Auditor
John H. Flook *Herbert G. Loessler*
John H. Flook, County Drain Commissioner Auditor
John P. Cook
John P. Cook, Auditor

CERTIFICATE OF APPROVAL BY THE CITY PLANNING COMMISSION

This plat was approved by the Planning Commission of the City of Ann Arbor, Michigan at a meeting held on the... day of... 1942.
Richard A. Warr
Richard A. Warr, Chairman
Joseph W. Edwards
Joseph W. Edwards, Vice-Chairman
Robert V. Galbreath
Robert V. Galbreath, Secretary

COUNTY TREASURER'S CERTIFICATE

Office of County Treasurer, Washtenaw County
I hereby certify, that there are no tax liens or titles held by the State on the lands described hereon, and that there are no tax liens or titles held by individuals on said lands for the five years preceding the... day of... 1942, and that the taxes for said period of five years are all paid, as shown by the records of this office.
This Certificate does not apply to taxes, if any, now in process of collection by township, city or village collecting officer.
Sylvester A. Leonard
Sylvester A. Leonard, County Treasurer

APPROVAL BY COUNTY PLAT BOARD

This plat was approved on the... day of... 1942, by the Washtenaw County Plat Board.
Patricia Newkirk Hardy *John H. Flook*
Patricia Newkirk Hardy, County Register of Deeds County Drain Commissioner
J. Martin Remp *Herbert G. Loessler*
J. Martin Remp, Auditor
John P. Cook
John P. Cook, Auditor

SURVEYOR'S CERTIFICATE

I hereby certify that the plat hereon delineated is a correct one and that permanent metal monuments consisting of bars not less than one-half inch in diameter and 36 inches in length, or shorter bars of not less than one-half inch in diameter lapped over each other at least 6 inches with an over-all length of not less than 36 inches, encased in a concrete cylinder at least 4 inches in diameter and 6 inches in depth have been placed at points marked true (X) as thereon shown at all angles in the boundaries of the land platted, at all the intersections of streets, intersections of alleys, or of streets and alleys, and at the intersection of streets and alleys with the boundaries of the plat as shown on said plat.

Carl G. Friend
Carl G. Friend
Registered Surveyor No. 13031
114 North First Street
Ann Arbor, Michigan

MAY 6 1955

SHEET 1 OF 2

WESTAIRE
TERRACE
SUBDIVISION

MAPLE RIDGE

A SUBDIVISION OF PART OF THE SOUTHWEST 1/4 OF SEC. 19, T2S,
R6E, CITY OF ANN ARBOR, WASHTENAW COUNTY, MICHIGAN



ALL DIMENSIONS IN FEET AND DECIMALS THEREOF
ALL DIMENSIONS ON CURVES ARE ARC LENGTHS
SURVEY BY ATWELL - HICKS, INC.

NOT PLATTED

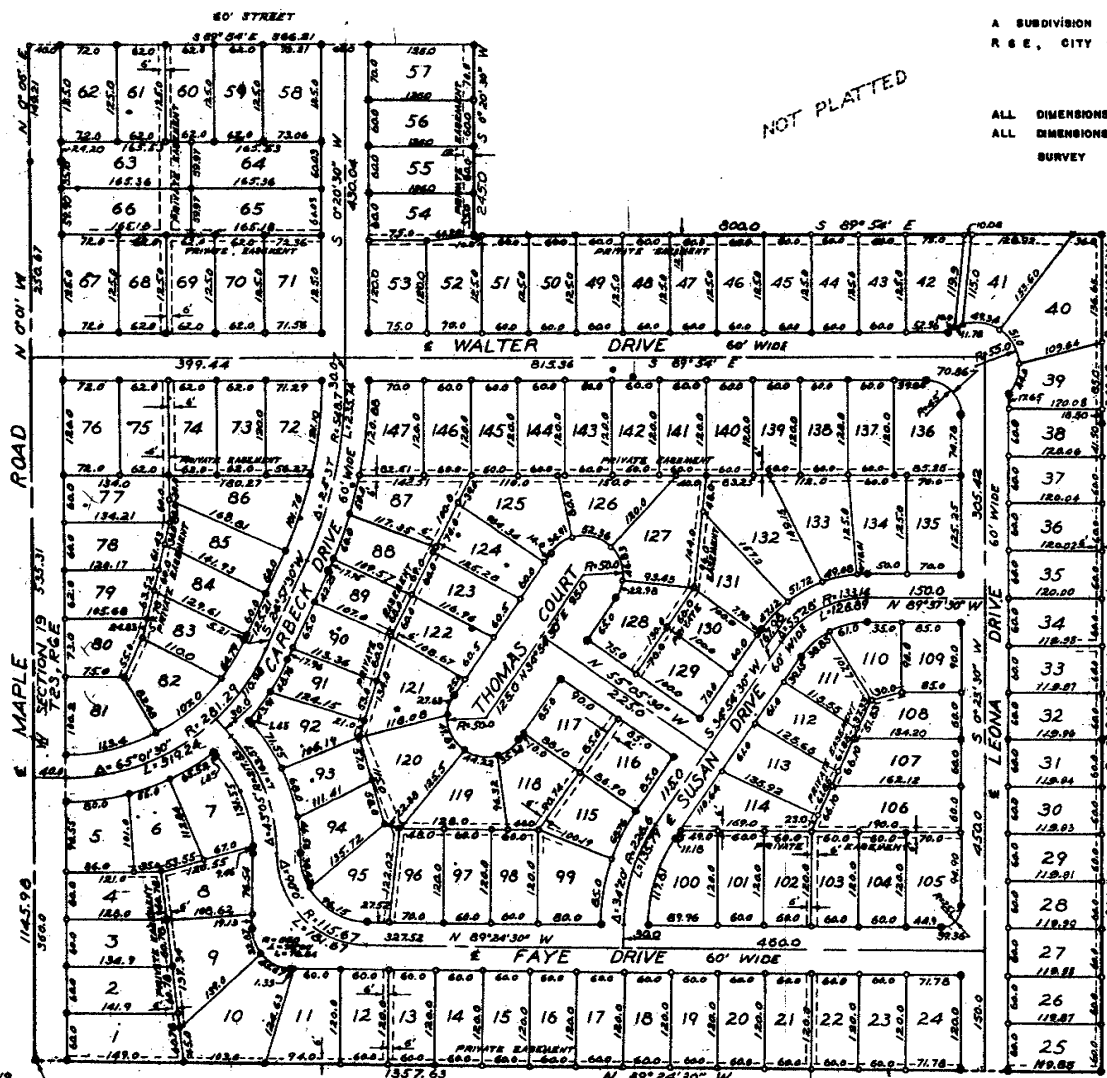


ARBOR HEIGHTS
SUBDIVISION

NOT PLATTED

SCIOTO HILLS
NO. 1

SW COR. SEC. 19
T2S - R6E



MAY 6 1955

MAPLE RIDGE SUBDIVISION,

SHEET 2 OF 2

PART OF THE SW 1/4 OF THE SW 1/4 SEC. 19
T2S R6E CITY OF ANN ARBOR, WASHTENAW COUNTY, MICH.

0 100 200 300
SCALE 1" = 100'

ALL DIMENSIONS IN FEET AND DECIMALS THEREOF
ALL DIMENSIONS ON CURVES ARE ARC LENGTHS
SURVEY BY ATWELL - HICKS, INC.

DEDICATION

KNOW ALL MEN BY THESE PRESENTS, that we, Floyd A. Sergeant and Mildred T. Sergeant, his wife, and Van Dusen-Carbeck, Inc., a Michigan corporation by Walter D. Van Dusen, President, and Albert E. Blasfield, Secretary, as proprietors, have caused the land embraced in the annexed plat to be surveyed, laid out and platted to be known as "MAPLE RIDGE SUBDIVISION, part of the SW 1/4 of the SW 1/4 of Sec 19 T2S R6E City of Ann Arbor, Washtenaw County, Mich" and that the road and drives as shown on said plat are hereby dedicated to the public.

Signed and Sealed in
the Presence of:

Harriet C. Hoppe
HARRIET C. HOPPE (Witness)
Bertha R. Severance
BERTHA R. SEVERANCE (Witness)

Floyd A. Sergeant
FLOYD A. SERGEANT
Mildred T. Sergeant
MILDRED T. SERGEANT

Signed and Sealed in
the Presence of:

Margaret H. Pommeroy
MARGARET H. POMEROY (Witness)
June E. Ungewick
JUNE E. UNGEWICK (Witness)

Van Dusen - Carbeck, Inc.
by
Walter D. Van Dusen
WALTER D. VAN DUSEN (President)
Albert E. Blasfield
ALBERT E. BLASFIELD (Secretary)

ACKNOWLEDGMENT

STATE OF MICHIGAN) ss.
County of Washtenaw)

On this 10th day of January, 1955, before me a Notary Public in and for said County, personally came the above named Floyd A. Sergeant and Mildred T. Sergeant known to me to be the persons who executed the above dedication, and acknowledged the same to be their free act and deed.

Harriet C. Hoppe
HARRIET C. HOPPE
Notary Public in and for said County

My Commission expires Dec. 9, 1957

ACKNOWLEDGMENT

STATE OF MICHIGAN) ss.
County of Washtenaw)

On this 11th day of January, A.D. 1955, before me a Notary Public in and for said county appeared Walter D. Van Dusen and Albert E. Blasfield to me personally known, who being each by me duly sworn did say that they are the President and Secretary respectively of Van Dusen-Carbeck, Inc., a Michigan corporation, and that the seal affixed to said instrument is the corporate seal of said corporation and that said instrument was signed and sealed in behalf of said corporation by authority of its Board of Directors and the said Walter D. Van Dusen and Albert E. Blasfield acknowledged said instrument to be the free act and deed of said corporation.

Margaret H. Pommeroy
MARGARET H. POMEROY
Notary Public in and for said County

My Commission expires Sept. 3, 1957

DESCRIPTION OF LAND PLATTED

The land embraced in the annexed plat of "MAPLE RIDGE SUBDIVISION, part of the SW 1/4 of the SW 1/4 of Sec 19 T2S R6E City of Ann Arbor, Washtenaw County, Mich" is described as follows:

BEGINNING at the SW corner of Sec 19 T2S R6E, Ann Arbor Township, Washtenaw County, Mich.; thence N 0°-01'-00" W 1145.72 feet along the west line of said Section 19; thence N 0°-06'-00" E 149.25 feet along the west line of said Section 19; thence S 89°-54'-00" E 566.23 feet; thence S 0°-20'-30" W 245.00 feet; thence S 89°-54'-00" E 800.00 feet; thence S 0°-20'-30" W 240.15 feet; thence S 0°-24'-30" W 821.50 feet; thence N 89°-24'-30" W 1357.63 feet to the place of beginning, containing 147 lots numbered 1-147 inclusive.

APPROVAL BY THE COUNTY PLAT BOARD

This plat was approved on the 27th day of April, 1955.

Patricia Newkirk Hardy
PATRICIA NEWKIRK HARDY (County Register of Deeds)
J. Martin Rompp
J. MARTIN ROMPP (Auditor)
Adolph F. Gross
ADOLPH F. GROSS (Auditor)
Herbert G. Loeffler
HERBERT G. LOEFFLER (Auditor)

COUNTY TREASURER'S CERTIFICATE

Office of County Treasurer, Washtenaw County.
I hereby certify, that there are no tax liens or titles held by the State on the lands described hereon, and that there are no tax liens or titles held by individuals on said lands, for the five years preceding the 27th day of April, 1955, and that the taxes for said period of five years are all paid, as shown by the records of this office.
This certificate does not apply to taxes, if any, now in process of collection by township, city or village collecting officers.

W. F. Verne
W. F. VERNE (County Treasurer)

APPROVAL BY BOARD OF COUNTY ROAD COMMISSIONERS

THIS PLAT HAS BEEN EXAMINED AND WAS APPROVED ON THE 29th DAY OF April, 1955, BY THE WASHTENAW COUNTY BOARD OF ROAD COMMISSIONERS

James C. Hendley
JAMES C. HENDLEY (CHAIRMAN)
Raymond L. Koch
RAYMOND L. KOCH (MEMBER)

W. L. FRINGER (MEMBER)

SURVEYOR'S CERTIFICATE

I hereby certify that the plat hereon delineated is a correct one and that permanent metal monuments consisting of bars not less than one-half inch in diameter and 36 inches in length, or shorter bars of not less than one-half inch in diameter lapped over each other at least 6 inches with an over-all length of not less than 36 inches, encased in a concrete cylinder at least 4 inches in diameter and 36 inches in depth have been placed at points marked thus (©) as thereon shown at all angles in the boundaries of the land platted, at all the intersections of streets, intersections of alleys, or of streets and alleys, and at the intersections of streets and alleys with the boundaries of the plat as shown on said plat.

Herbert S. Hicks
HERBERT S. HICKS
Registered Land Surveyor #1715

MUNICIPAL APPROVAL

This plat was approved by the Board of Public Works of the City of Ann Arbor at a meeting held April 15, 1955.

Fred J. Looker
FRED J. LOOKER (Clerk)

MUNICIPAL APPROVAL

This plat was approved by the Common Council of the City of Ann Arbor at a meeting held April 16, 1955.

Fred J. Looker
FRED J. LOOKER (Clerk)

CERTIFICATE OF APPROVAL BY THE CITY PLANNING COMMISSION

This plat was approved by the Planning Commission of the City of Ann Arbor, Mich., at a meeting held on the 19th day of APRIL 14, 1955.

John E. Swisher, Jr.
JOHN E. SWISHER, JR. (Chairman)
Sybil K. Bennett
SYBIL K. BENNETT (Secretary)

CITY CLERK'S CERTIFICATE

Office of City Clerk, City of Ann Arbor
I hereby certify, that the width and depth of lots shown on this plat are in compliance with rules and regulations of the City of Ann Arbor and the requirements as to width and depth of Sec. 30 of Act 172, Public Acts of 1929 as amended by Act 186 Public Acts of 1954.

Fred J. Looker
FRED J. LOOKER (Clerk)

JUL 7 1953

SHEET 1 OF 2

MARTIN ACRES

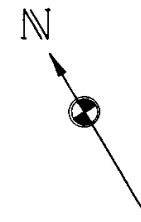
A SUBDIVISION OF PART OF THE E 1/2 OF THE NW 1/4, AND
PART OF THE NE 1/4 OF THE SW 1/4 OF SECTION 19, TOWN
2 SOUTH, RANGE 6 EAST, CITY OF ANN ARBOR,
WASHTENAW COUNTY, MICHIGAN.



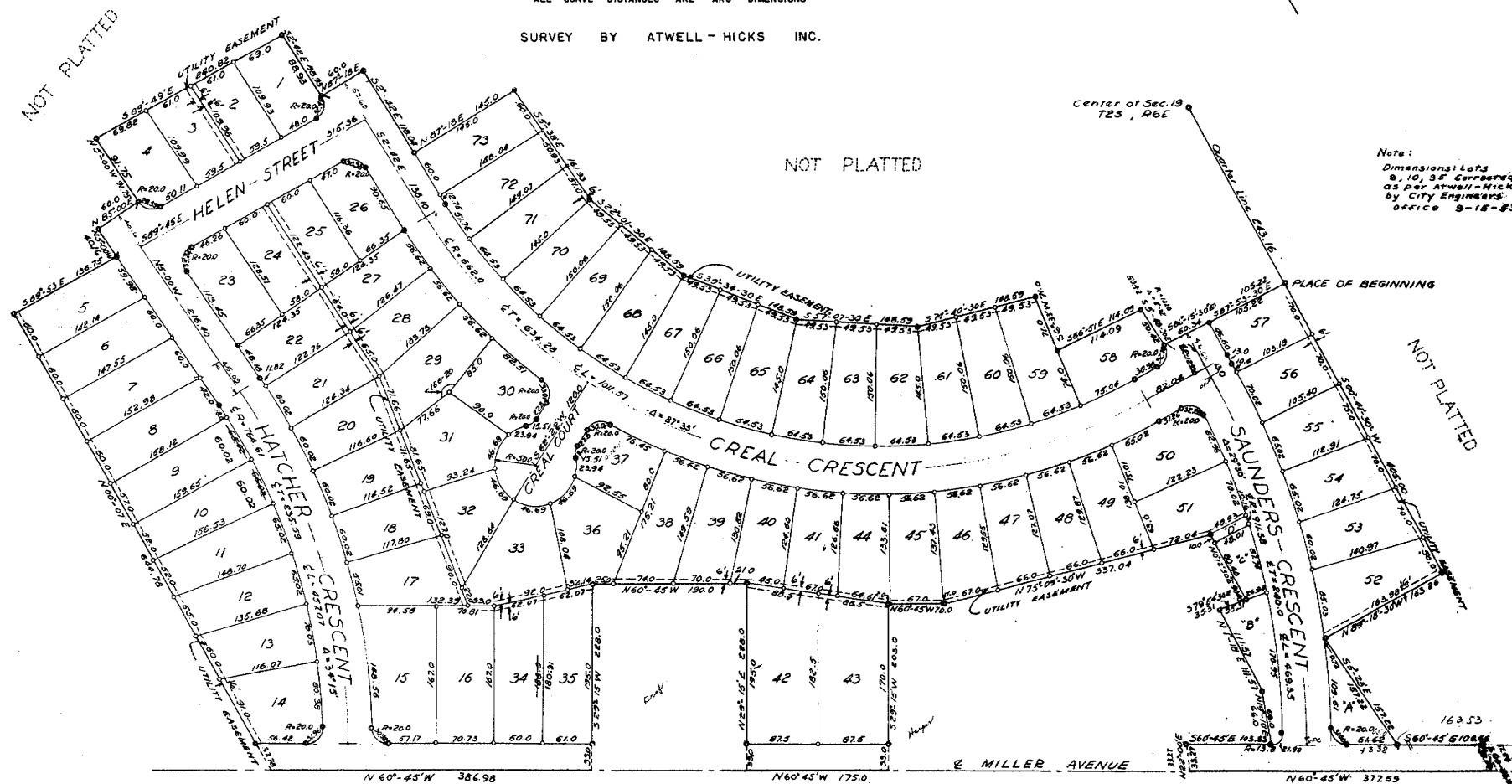
SCALE 1" = 80'

ALL DIMENSIONS ARE IN FEET AND DECIMALS THEREOF
ALL CURVE DISTANCES ARE ARC DIMENSIONS

SURVEY BY ATWELL - HICKS INC.



1 OF 2
07/09/1953
ANN ARBOR
WASHTENAW COUNTY
MICHIGAN



Note:
Dimensions: Lots
9, 10, 35 Corrected
as per Atwell-Hicks
by City Engineers
Office 3-15-53

ARBOR HEIGHTS NO. 2.

Register's Office } ss.
Waltham County.
 Plat of Merton Acres
City of Waltham
 was Recorded this 9th day of
July A.D. 1953 at 9⁰⁰ o'clock
 A.M. in Liber 11 of Plats
 in Page 62 and 63
Thomas J. Fitzhugh
 Register of Deeds

ORIGINAL ON FILE
 Room P. N. Sherry, Jr.

I hereby certify that this copy is a true copy of the map or plot forwarded the Register of Deeds for recording.

Date: July 7, 1953
Filed in Auditor General's Dept.
Date: July 13, 1953
Examined and Approved
Date: July 7, 1953

27 *W. L. Newberry*
PLAT ENGINEER

DEDICATION

KNOW ALL MEN BY THESE PRESENTS, that we Earl W. Martin,
and Julia C. Martin, his wife,

and **Arbor Heights Building Corporation**
 a Michigan corporation by **S. Brooks Barron** Secretary,
Thomas A. Gallagher President,
 as proprietors, have caused the land embraced in the annexed plat to be surveyed, laid
 out and plotted to be known as **Martin Acres, A Subdivision**
 of part of the E. 1/2 of the N. W. 1/4 and part of the N. E. 1/4
 1/4 of the S. W. 1/4 of Section 19, Town 2 South, Range 6
 East, City of Ann Arbor, Washtenaw County, Michigan

and that the street, court, crescents, and avenue, as shown on said plat are hereby dedicated to the use of the public.

Signed and Sealed in
the Presence of:

<u>Bruce D. Green</u> BRUCE D. GREEN (Witness)	<u>Garland W. Martin</u> Garland W. Martin
<u>Robert C. Jacob</u> ROBERT C. JACOB (Witness)	<u>Julia C. Martin</u> (L. S.) Julia C. Martin

Signed and Sealed in the Presence of:

Earl Dye
EARL DYE (Witness)
Mary E. Dye
MARY E. DYE (Witness)

Arbor Heights Building Corp.

S. Brooks Barron
S. Brooks Barron President
Thomas A. Gallagher
Thomas A. Gallagher Secretary

ACKNOWLEDGMENT

STATE OF MICHIGAN } ss.
County of Washtenaw
On this 3 day of June 1953, before me
a Notary Public in and for said County, personally came the above named
Earl W. Martin and Julia C. Martin, his wife.
known to me to be the persons who executed the above dedication, and acknowledged
the same to be their free act and deed.

Notary Public Lucile E. Lauer County Washington
My Commission expires 1-13-57

MUNICIPAL APPROVAL

This Plat was approved by the Board of Public Works
of the City of Ann Arbor, Michigan, at a meeting
held, June 7, 1953.

Fred J. Looker (Clerk)

MARTIN ACRES

A SUBDIVISION OF PART OF THE E 1/2 OF THE NW 1/4 AND
PART OF THE NE 1/4 OF THE SW 1/4 OF SECTION 19, TOWN
2 SOUTH, RANGE 6 EAST, CITY OF ANN ARBOR,
WASHTENAW COUNTY, MICHIGAN.



SCALE 1" = 80'

ALL DIMENSIONS ARE IN FEET AND DECIMALS THEREOF
ALL CURVE DISTANCES ARE ARC DIMENSIONS

SURVEY BY ATWELL - HICKS INC.

ACKNOWLEDGMENT

STATE OF MICHIGAN
County of WASHTENAW

On this 3 day of June A.D. 1953, before me, LEAH F. FAY, a Notary Public in and for said county, appearing S. Brooks Barron, and Thomas A. Gallagher, to me personally known, and being each by me duly sworn did say that they are the President and Secretary respectively of the Arbor Heights Building Corporation, Michigan Corporation, and that the seal affixed to said instrument is the corporate seal of said corporation and that said instrument was signed and sealed in behalf of said corporation by authority of its Board of Directors and the said S. Brooks Barron and Thomas A. Gallagher, acknowledged said instrument to be the free act and deed of said corporation.

.....*Lucile E. Lauer*.....
LUCILE E. LAUER
Notary Public WASHTENAW County
My Commission Expires 1-13-57

**CERTIFICATE OF APPROVAL BY THE
CITY PLANNING COMMISSION**

This Plat was approved by the Planning Commission of the City of Ann Arbor, Mich., at a meeting held on the..... day of MAY 26 1953..... 1953

Frederick N. McOmber (Chairman)
William C. Walz (Secretary)

APPROVAL BY COUNTY PLAT BOARD

This plot was approved on the 2nd day of July, 1953 by the Washington County Bird Board.

Thomas A. FitzGerald (County Register of Deeds)
J. Martin Bumpo (County Auditor)
J. Martin Bumpo
Adolph F. Gross (County Auditor)
Adolph F. Gross
Herbert D. Roffler (County Auditor)
Herbert G. Loeffler

DESCRIPTION OF LAND PLATTED

The land embraced in the annexed plat of MARTIN ACRES, A Subdivision of part of the E. 1/2 of the N. W. 1/4 and part of the N. E. 1/4 of the S. W. 1/4, Section 19, Town 2 South, Range 6 East, City of Ann Arbor, Washtenaw County, Michigan

is described as follows:

Commencing at the center of Section 19, Town 2 South, Range 6 East, Ann Arbor Township, Washtenaw County, Michigan; thence S. 0° 41' 30" W., 243.16 ft. for a PLACE OF BEGINNING; thence continuing S. 0° 41' 30" W., 406.0 ft., thence N. 89° 18' 30" W., 163.26 ft., thence S. 5° 23' E., 157.22 ft., thence S. 60° 45' E., 104.66 ft., thence S. 0° 40' W., 37.64 ft., thence N. 60° 45' W., 377.59 ft., thence N. 2° 00' E., 33.27 ft., thence S. 60° 45' E., 103.83 ft., thence N. 19° 10' E., 68.0 ft., thence S. 1° 10' E., 111.57 ft., thence S. 79° 54' 30" E., 35.31 ft., thence N. 0° 12' 30" E., 90.40 ft., thence N. 75° 08' 30" W., 337.04 ft., thence N. 60° 45' W., 70.0 ft., thence S. 29° 15' W., 203.0 ft., thence N. 60° 45' W., 175.0 ft., thence N. 29° 15' E., 228.0 ft., thence N. 60° 45' W., 190.0 ft., thence S. 29° 15' W., 228.0 ft., thence N., 60° 45' W., 386.98 ft., thence N. 0° 07' E., 644.78 ft., thence S. 89° 53' E., 136.75 ft., thence N. 5° 00' W., 40.16 ft., thence N. 85° 00' E., 60.0 ft., thence N. 5° 00' W., 91.75 ft., thence S. 89° 49' E., 260.82 ft., thence S. 89° 49' E., 80.83 ft., thence N. 87° 18' E., 60.0 ft., thence S. 2° 42' E., 18.04 ft., thence N. 87° 18' E., 145.0 ft., thence S. 2° 42' E., 5.38 ft., thence S. 89° 49' E., 22° 01' 30" E., 148.59 ft., thence S. 39° 34' E., 148.59 ft., thence S. 57° 07' 30" N., 148.59 ft., thence S. 74° 40' N., 148.59 ft., thence S. 6° 33' W., 71.0 ft., thence S. 88° 51' E., 114.09 ft., thence South along the arc of a circular curve concave to the West, the radius of which is 1220.0 ft., the chord of which bears S. 3° 48' 30" E., 50.42 ft., thence S. 86° 15' 30" E., 60.34 ft., thence S. 87° 53' 30" E., 105.22 ft. to the place of beginning, being a part of the East 1/2 of the Northwest 1/4 of a part of the Northeast 1/4 of the Southwest 1/4 of said Section 19

COUNTY TREASURER'S CERTIFICATE

Office of County Treasurer, Washtenaw County.
I hereby certify, that there are no tax liens or titles held by the State on the lands de-
scribed hereon, and that there are no tax liens or titles held by individuals on said lands,
for the five years preceding the 25th day of
June, 1928, and that the taxes for said period of
five years are all paid, as shown by the records of this office.

This certificate does not apply to taxes, if any, now in process of collection by township,
city or village collecting officers.

W. F. Verner (County Treasurer)

MUNICIPAL APPROVAL

This plat was approved by the Common Council
of the City of Ann Arbor
at a meeting held June 1, 1903
Fred J. Locker (City Clerk)

SURVEYOR'S CERTIFICATE

I hereby certify that the plat herein delineated is a correct one and that permanent metal monuments consisting of bars not less than one-half inch in diameter and 48 inches in length, or shorter bars of not less than one-half inch in diameter leaped over each other at least 6 inches with an over-all length of not less than 48 inches, successed in a concrete cylinder at least 4 inches in diameter and 48 inches in depth have been placed at points marked thus (. . .) as thereon shown at all angles in the boundaries of the land platted, at all the intersections of streets, intersections of alleys, or of streets and alleys, and at the intersections of streets and alleys with the boundaries of the plat as shown on said plat.

Herbert S. Hicks No. 1715

Herbert S. Hicks No. 1715

WESTAIRE TERRACE

A SUBDIVISION OF PART OF THE WEST 1/2 SEC 19, T2S, R6E, CITY OF ANN ARBOR, WASHTENAW COUNTY, MICHIGAN

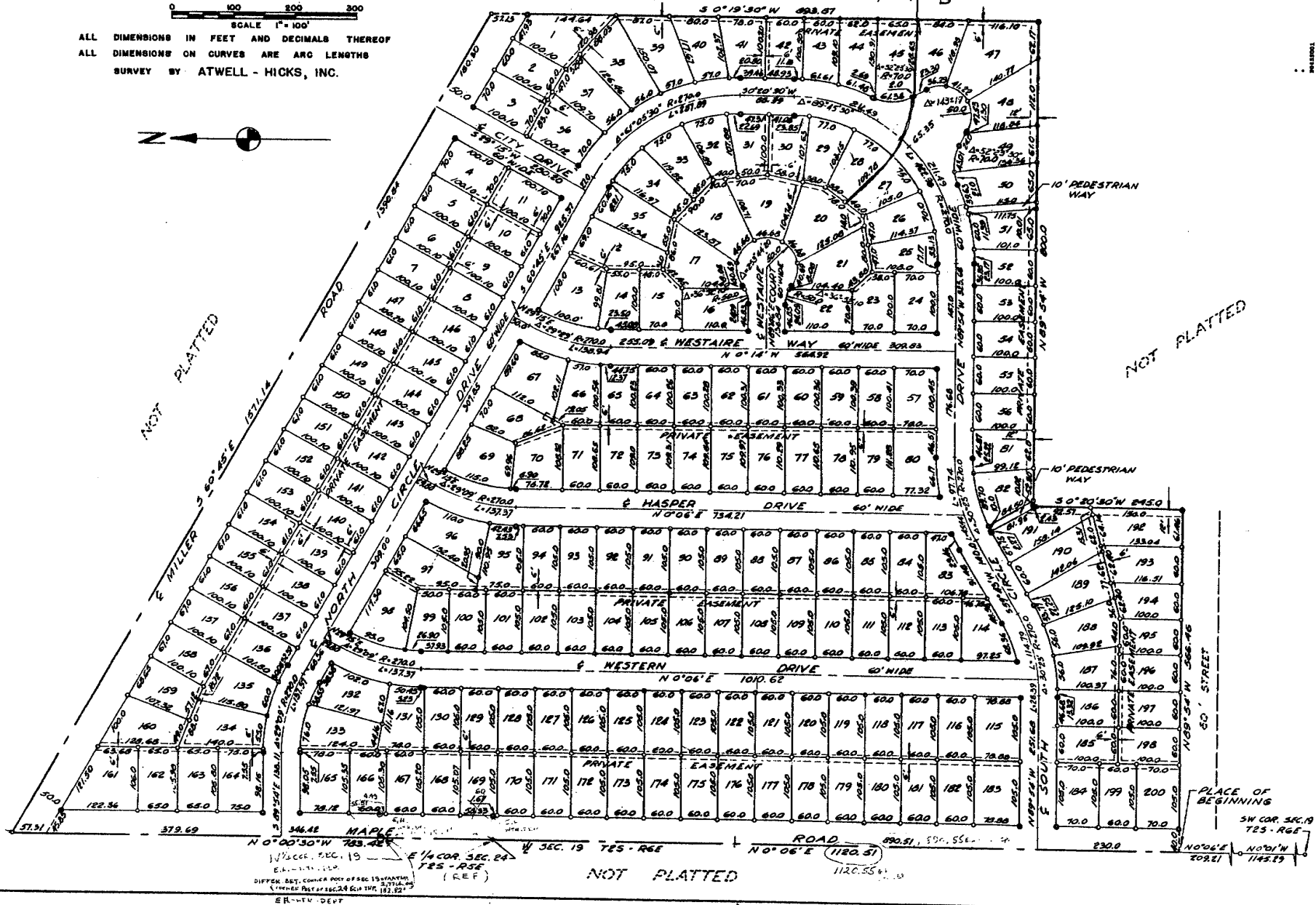
0 100 200 300
SCALE 1"=100'

ALL DIMENSIONS IN FEET AND DECIMALS THEREOF
ALL DIMENSIONS ON CURVES ARE ARC LENGTHS
SURVEY BY ATWELL - HICKS, INC.



ARBOR HEIGHTS
SUBDIVISION No 2

SHEET 1 OF 2



WESTAIRE TERRACE

SHEET 2 OF 2

Register's Office
Washtenaw County, Mich.
Plat of Westaire Terrace
City of Ann Arbor
was Recorded this 29 day of April
1955 at 2 o'clock
P. M. in File No. 12 of Plats
on Page 51-52

A SUBDIVISION OF PART OF THE WEST 1/2 SEC 19, T 2 S,
R 6 E, CITY OF ANN ARBOR, WASHTENAW COUNTY, MICHIGAN

0 100 200 300
SCALE 1" = 100'

ALL DIMENSIONS IN FEET AND DECIMALS THEREOF
ALL DIMENSIONS ON CURVES ARE ARC LENGTHS

SURVEY BY ATWELL - HICKS, INC.

I hereby certify this copy is a true copy of map or
plat forwarded the Register of Deeds for recording.
Date May 16, 1955
Filed in Auditor General's Dept.
Date May 16, 1955
Examined and approved
Date May 26, 1955

Victor J. Argentin
Auditor General
By D. J. M. [Signature]
State Engineer

DEDICATION

KNOW ALL MEN BY THESE PRESENTS, that we Neil O. Staebler, doing business under the assumed name of Staebler and Son, Burnette Staebler, his wife, Rena O. Geyer, survivor of Harold H. Geyer, and HARRY LEE GEYER, a SINGLE MAN as proprietors, have caused the land embraced in the annexed plat to be surveyed, laid out and platted, to be known as WESTAIRE TERRACE a subdivision of part of the West 1/2 Sec 19, T 2 S R 6 E, City of Ann Arbor, Washtenaw County Michigan and that the roads, ways and drives as shown on said plat are hereby dedicated to the use of the public.

Signed and Sealed in
the Presence of:

Hubert S. Hicks (L.S.)
Herbert S. Hicks
Neil O. Staebler
Burnette Staebler (L.S.)
Burnette Staebler
Rena O. Geyer (L.S.)
Rena O. Geyer
HARRY LEE GEYER (L.S.)
HARRY LEE GEYER

SURVEYOR'S CERTIFICATE

I hereby certify that the plat hereon delineated is a correct one and that permanent metal monuments consisting of bars not less than one-half inch in diameter and 36 inches in length, or shorter bars of not less than one-half inch in diameter lapped over each other at least 6 inches with an over-all length of not less than 36 inches, encased in a concrete cylinder at least 4 inches in diameter and 36 inches in depth have been placed at points marked thus (●) as thereon shown at all angles in the boundaries of the land platted, at all the intersections of streets, intersections of alleys, or of streets and alleys, and at the intersections of streets and alleys with the boundaries of the plat as shown on said plat.

Herbert S. Hicks
Herbert S. Hicks
Registered Land Surveyor and
Professional Engineer # 1715

COUNTY TREASURER'S CERTIFICATE

Office of County Treasurer, Washtenaw County.
I hereby certify, that there are no tax liens or titles held by the State on the lands described hereon, and that there are no tax liens or titles held by individuals on said lands, for the five years preceding the 26th day of April, 1955, and that the taxes for said period of five years are all paid, as shown by the records of this office.
This certificate does not apply to taxes, if any, now in process of collection by township, city or village collecting officers.

W. F. Verner
W. F. Verner (County Treasurer)

APPROVAL BY COUNTY PLAT BOARD

This plat was approved on the 6th day of May, 1955 by the Washtenaw County Plat Board.

Patricia Newkirk Hardy
Patricia Newkirk Hardy (County Register of Deeds)
J. Martin Rempp (Auditor)
Adolph F. Gross (Auditor)
Herbert G. Loeffler (Auditor)

ACKNOWLEDGMENT

STATE OF MICHIGAN) SS
County of Washtenaw)

On this 26th day of March, A.D. 1955 before me, a Notary Public in and for said County, personally came the above named Neil O. Staebler, Burnette Staebler, HARRY LEE GEYER, and Rena O. Geyer known to me to be the persons who executed the above dedication, and acknowledged the same to be their free act and deed.

Lucile E. Lauer
Lucile E. Lauer
Notary Public in and for Washtenaw County
My Commission expires 1-13-57

DESCRIPTION OF LAND PLATTED

The land embraced in the annexed plat of WESTAIRE TERRACE a subdivision of part of the West 1/2 Sec 19, T 2 S, R 6 E, City of Ann Arbor, Washtenaw County, Michigan is described as follows:

COMMENCING at the SW corner of Section 19, T 2 S, R 6 E, City of Ann Arbor, Washtenaw County, Michigan; thence along the west line of said section N 0°-01' W 1145.29 feet; thence N 0°-06' E 208.21 feet for a PLACE OF BEGINNING; thence continuing N 0°-06' E 1120.51 feet; thence N 0°-00'-30" W 783.42 feet; thence S 60°-45' E 1571.14 feet; thence S 0°-19'-30" W 893.87 feet; thence N 69°-54' W 800.0 feet; thence S 0°-20'-30" W 245.0 feet; thence N 89°-54' W 566.46 feet to the place of beginning containing 200 lots numbered 1 to 200 inclusive.

CERTIFICATE OF APPROVAL BY THE CITY PLANNING COMMISSION

This plat was approved by the Planning Commission of the City of Ann Arbor, Mich., at a meeting held on the 29 day of MARCH, 1955

John E. Swisher, Jr.
John E. Swisher, Jr. (Chairman)
Sybil K. Bennett
Sybil K. Bennett (Secretary)

MUNICIPAL APPROVAL

This plat was approved by the Common Council of the City of Ann Arbor at a meeting held April 7, 1955

Fred J. Looker
Fred J. Looker (Clerk)

MUNICIPAL APPROVAL

This plat was approved by the Board of Public Works of the City of Ann Arbor at a meeting held April 6, 1955

Fred J. Looker
Fred J. Looker (Clerk)

CITY CLERK'S CERTIFICATE

Office of City Clerk, City of Ann Arbor
I hereby certify, that the width and depth of lots shown on this plat are in compliance with rules and regulation of the City of Ann Arbor and the requirements as to width and depth of Sec. 30 of Act 172, Public Acts of 1929 as amended by Act 186 Public Acts of 1954.

Fred J. Looker
Fred J. Looker (Clerk)

APPROVAL BY BOARD OF COUNTY ROAD COMMISSIONERS

This plat has been examined and was approved on the 29th day of April, 1955 by the Washtenaw County Board of Road Commissioners.

James C. Hendley
James C. Hendley (Chairman)
Raymond L. Koch
Raymond L. Koch (Member)
H. L. Frisinger
H. L. Frisinger (Member)

1646002
LIBER 14
PAGE 40

Walter
Westport Hills
Subdivision No. 3
August 13, 1959
Patricia Newkirk Hardy

WESTPORT HILLS SUBDIVISION NO. 3

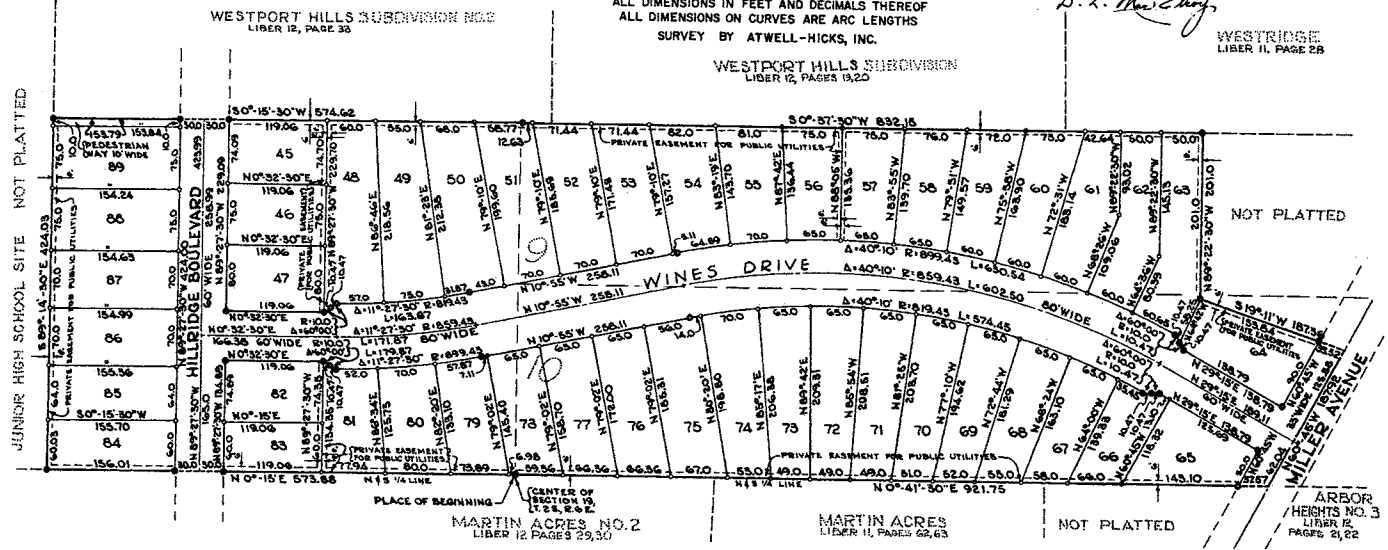
OF PART OF THE NE 1/4 OF SECTION 19, AND OF LOTS 9 AND 10 OF THE PLAT OF THE SE 1/4 OF SECTION 19, T2S, R6E, CITY OF ANN ARBOR, WASHTENAW COUNTY, MICHIGAN

0 100 200 300
SCALE 1" = 100'

ALL DIMENSIONS IN FEET AND DECIMALS THEREOF
ALL DIMENSIONS ON CURVES ARE ARC LENGTHS
SURVEY BY ATWELL-HICKS, INC.

August 13, 1959
August 29, 1959
August 13, 1959
D. L. Shaw, Esq.

WESTRIDGE
LIBER 11, PAGE 28



DEDICATION

KNOW ALL MEN BY THESE PRESENTS, that we, Neil O. Staebler, doing business under the assumed name of Staebler & Son, Burnette Staebler, his wife, Mary Steeb, Anna M. McPhee, and the L.G. and R. Corporation, a Michigan Corporation by Larry Shalit, President, and Ralph L. Seltzer, Sec., as proprietors, have caused the land embraced in the annexed plat to be surveyed, laid out and platted to be known as WESTPORT HILLS SUBDIVISION NO. 3 of part of the NE 1/4 of Section 19, T2S, R6E, City of Ann Arbor, Washtenaw County, Michigan and that the Boulevard, Drive, Avenue and Pedestrianway as shown on said plat are hereby dedicated to the use of the public.

Signed and Sealed in the Presence of:

Hugh E. Wilson
Eleanor Kilpatrick
Witness

Neil O. Staebler
Burnette Staebler
Mary Steeb
Anna M. McPhee

Signed and Sealed in the Presence of:

Arthur R. Peer
Jacqueline B. Royal
Witness

L.G. and R. CORPORATION
Larry Shalit, President
Ralph L. Seltzer, Secretary

ACKNOWLEDGMENT

STATE OF MICHIGAN)
County of Washtenaw) ss.

On this 13th day of August, 1959, before me, a Notary Public in and for said County, personally came Neil O. Staebler, Burnette Staebler, Mary Steeb and Anna M. McPhee, known to me to be the persons who executed the above dedication and acknowledged the same to be their free act and deed.

Eleanor Kilpatrick
Notary Public in and for Washtenaw County, Michigan
My Commission expires March 14, 1960

ACKNOWLEDGMENT

STATE OF MICHIGAN)
County of Washtenaw) ss.

On this 13th day of August, 1959, before me, a Notary Public in and for said County, appeared Larry Shalit, and Ralph L. Seltzer, to me personally known, who being each by me duly sworn did say that they are the President and Secretary respectively of the L.G. and R. Corporation, a Michigan Corporation, and that said instrument was signed in behalf of said Corporation by authority of its Board of Directors and the said Larry Shalit and Ralph L. Seltzer acknowledged said instrument to be the free act and deed of said Corporation.

Jacqueline B. Royal
Notary Public in and for Washtenaw County, Michigan
My Commission expires March 14, 1960

DESCRIPTION OF LAND PLATTED

The land embraced in the annexed plat of WESTPORT HILLS SUBDIVISION NO. 3 of part of the NE 1/4 of Section 19, and of Lots 9 and 10 of the plat of the SE 1/4 of Section 19, T2S, R6E, City of Ann Arbor, Washtenaw County, Michigan is described as follows:

Beginning at the center of Section 19, T2S, R6E, City of Ann Arbor, Washtenaw County, Michigan; thence N 0° - 15' E 573.88 feet; thence S 89° - 14' - 30" E 424.03 feet; thence S 0° - 15' - 30" W 574.62 feet; thence S 0° - 37' - 30" W 832.15 feet; thence N 89° - 22' - 30" W 201.0 feet; thence S 19° - 11' W 187.36 feet; thence N 60° - 45' W 187.92 feet; thence N 0° - 41' - 30" E 921.75 feet to the Place of Beginning containing 45 lots numbered 45 through 89 inclusive.

SURVEYOR'S CERTIFICATE

I hereby certify that the plat hereon delineated is a correct one and that permanent metal monuments consisting of bars not less than one-half inch in diameter and 36 inches in length, or shorter bars of not less than one-half inch in diameter lapped over each other at least 6 inches with an overall length of not less than 36 inches, encased in a concrete cylinder at least 4 inches in diameter and 36 inches in depth have been placed at points marked (B) as shown at all angles in the boundaries of the land platted, at all the intersections of lines of streets, and at the intersections of lines of streets with the boundaries of the plat as shown on said plat.

Robert J. Jagow
Registered Land Surveyor #6998

CERTIFICATE OF APPROVAL BY THE CITY PLANNING COMMISSION

This plat was approved by the Planning Commission of the City of Ann Arbor, Michigan at a meeting held on the 28th day of August, 1959.

Dean W. Coston, Chairman
John D. Paul, Secretary

CERTIFICATE OF MUNICIPAL APPROVAL

This plat was approved by the Common Council of the City of Ann Arbor at a meeting held on the 13th day of August, 1959, and that the width of lots is in compliance with requirements of Section 30, Act 172, of 1929, as amended.

Fred J. Locker, Clerk

COUNTY TREASURER'S CERTIFICATE

Office of County Treasurer, Washtenaw County

I hereby certify, that there are no tax liens or titles held by the State on the lands described hereon, and that there are no tax liens or titles held by individuals on said lands for the five years preceding the 13th day of August, 1959, and that the taxes for said period of five years are all paid, as shown by the records of this office.

W.F. Verner, County Treasurer

APPROVAL BY COUNTY PLAT BOARD

This plat was approved on the 7th day of August, 1959 by the Washtenaw County Plat Board.

Patricia Newkirk Hardy, County Register of Deeds
John H. Flook, County Commissioner
J. Martin Rompp, Auditor
Herbert G. Loefler, Auditor

1253 Page 186
Re Discontinuance of Delta St.

"SCIOTO HILLS"

A SUBDIVISION OF PART OF THE SOUTHEAST QUARTER,
SECTION 24, SCIO TOWNSHIP,
WASHTENAW COUNTY, MICHIGAN.

SCALE: ONE INCH = ONE HUNDRED FEET.

See also 1054 Page 518

Sept 7 1926
J. L. ...

CERTIFICATE OF APPROVAL

BY THE TOWNSHIP BOARD

This plan was approved by the Township Board of the Township of Scio, Washtenaw County, Michigan, at a meeting held on the 1st day of September, 1926.

TAX CERTIFICATE

OFFICE OF THE COUNTY TREASURER
WASHTENAW COUNTY, MICHIGAN

I hereby certify that there are no tax liens or titles held by the State on the lands described here, and that there are no tax liens or titles held by individuals on said lands for the five years preceding the 1st day of August 1926 and that the taxes for said period of five years are paid, as shown by the records of this office.

James E. Hatch
County Treasurer

Notes:
All dimensions are given in feet and decimals thereof.

DESCRIPTION

The land embraced in the annexed plat of "SCIOTO HILLS", a subdivision of part of the southeast quarter, section 24, Scio Township, Washtenaw County, Michigan, is described as follows: Commencing at the southeast corner of section 24, town 26 N., 11° E., along the center line of a public highway 70.20 feet; to the north line of Dexter Avenue; thence N. 61°-48' W. along said north line 1284.26 feet; thence continuing along said north line N. 58°-23' W. 307.75 feet; thence N. 61°-12' W. 22.02 feet to the intersection of the east line of "EVERGREEN LITTLE FARM" with the north line of Dexter Road; thence S. 1°-00' W. 307.75 feet to the south line of said section 24; thence S. 89°-56' W. 30° E. along said south line 1927.36 feet to the place of beginning.

SURVEYOR'S CERTIFICATE

I hereby certify that the plat herein delineated is a correct one and that permanent metal monuments of not less than one inch in diameter and fifteen inches in length set in a concrete base at least four inches in diameter and forty-eight inches in depth have been placed at points marked thus \times , as shown shown at all angles in the boundaries of the land platted, at all the intersections of streets, intersections of alleys, or of streets and alleys, and at the intersections of streets and alleys with the boundaries of the plat, as shown on said plat.

H. H. Atwell
Registered Civil Engineer.

DEDICATION

KNOW ALL MEN BY THESE PRESENTS: That we the "HIGHLAND REALTY COMPANY", a Michigan Corporation by J. D. Miles President, and Board of Directors as proprietors, have caused the land embraced in the annexed plat to be surveyed, laid out and platted to be known as "SCIOTO HILLS", a subdivision of part of the southeast quarter section 24, Scio Township, Washtenaw County, Michigan, and that the streets as shown on said plat are hereby dedicated to the use of the Public.

"HIGHLAND REALTY COMPANY"

Signed and Sealed in the Presence of:

James E. Hatch, President
James E. Hatch, Secretary

STATE OF MICHIGAN

COUNTY OF WASHTENAW

On this 1st day of August, 1926, before me appeared J. D. Miles, a Notary Public in and for said county, who being sworn by me duly sworn, did say that they are the President and Secretary respectively of the "HIGHLAND REALTY COMPANY", a Michigan corporation, and that the land affixed to said instrument is the corporate land of said corporation and that said instrument was signed and sealed in behalf of said corporation by authority of its Board of Directors and the said J. D. Miles, and Edward W. Wern, acknowledged said instrument to be the free act and deed of said corporation.

James E. Hatch
Notary Public, Washtenaw County, Michigan.

My commission expires August 1, 1927.

DEDICATION

KNOW ALL MEN BY THESE PRESENTS: That we Charles A. Seybold and his wife Allie M. Seybold as proprietors, have caused the land embraced in the annexed plat to be surveyed, laid out and platted to be known as "SCIOTO HILLS", a subdivision of part of the southeast quarter section 24, Scio Township, Washtenaw County, Michigan, and that the streets as shown on said plat are hereby dedicated to the use of the Public.

Signed and Sealed in the Presence of:

H. H. Atwell, Charles A. Seybold (Jr.)
Charles A. Seybold, Allie M. Seybold (Jr.)

STATE OF MICHIGAN

COUNTY OF WASHTENAW

On this 1st day of August, 1926 before me a Notary Public in and for said county, personally came the above named Charles A. Seybold and his wife Allie M. Seybold, known to me to be the persons who executed the above dedication, and acknowledged the same to be their free act and deed.

James E. Hatch
Notary Public, Washtenaw County, Michigan.

My Commission expires August 1, 1927.

CERTIFICATE OF APPROVAL

BY THE BOARD OF COUNTY AUDITORS

This plat was approved by the Board of County Auditors of Washtenaw County, Michigan, this 1st day of August, 1926.

James E. Hatch, Chairman

Samuel A. ...

...

...

...

...

...

...

...

...

...

...

...

...

...

...

...

...

...

...

...

...

...

...

...

...

...

See Liber 1361 Page 428 - See Liber 1184 Page 482 - See Liber 1306 Page 548
See Liber 1316 Page 551

உ

June 17-1929
To L. L. Lacey

EAST AND WEST QUARTER LINE OF SEC. 24

102	127.1
101	126.4
100	125.7
99	124.9
98	124.22
97	123.51
96	122.81
95	122.1
94	121.4
93	120.7
92	120.0
91	119.3
90	118.6
89	117.9
88	117.2
87	116.5
86	115.8
85	115.1
84	114.4
83	113.7
82	113.0
81	112.3
80	111.6
79	110.9
78	110.2
77	109.5
76	108.8
75	108.1
74	107.4
73	106.7
72	106.0
71	105.3
70	104.6
69	103.9
68	103.2
67	102.5
66	101.8
65	101.1
64	100.4
63	99.7
62	99.0
61	98.3
60	97.6
59	96.9
58	96.2
57	95.5
56	94.8
55	94.1
54	93.4
53	92.7
52	92.0
51	91.3
50	90.6
49	89.9
48	89.2
47	88.5
46	87.8
45	87.1
44	86.4
43	85.7
42	85.0
41	84.3
40	83.6
39	82.9
38	82.2
37	81.5
36	80.8
35	80.1
34	79.4
33	78.7
32	78.0
31	77.3
30	76.6
29	75.9
28	75.2
27	74.5
26	73.8
25	73.1
24	72.4
23	71.7
22	71.0
21	70.3
20	69.6
19	68.9
18	68.2
17	67.5
16	66.8
15	66.1
14	65.4
13	64.7
12	64.0
11	63.3
10	62.6
9	61.9
8	61.2
7	60.5
6	59.8
5	59.1
4	58.4
3	57.7
2	57.0
1	56.3

A SUBDIVISION OF PART OF THE
SOUTHEAST QUARTER SECTION 24,
3610 TOWNSHIP
WASHTENAW COUNTY, MICHIGAN.

SCALE: 1" = 160'

DEPARTMENT OF DEATH }
 Washington, D.C. }
 BUREAU for Record, the 19th
 day of June A.D. 192
 at 10:00 o'clock P.M. and separate
 at 8 o'clock P.M. on Page 3
 of the above mentioned
 Register of Deaths

I hereby certify that the plat herein delineated is a correct one and that permanent metal monuments of not less than one inch in diameter and fifteen inches in length set in a concrete base at least four inches in diameter and forty-eight inches in depth have been placed at points marked thus @ as thereon shown at all angles in the boundaries of the land platted, at all the intersections of streets, intersections of alleys, or of street and alleys, and at the intersections of streets and alleys with the boundaries of the plat as shown on said plat.

H. H. Atwell
Res. Civil Engineer

OFFICE OF THE COUNTY TREASURER, WASHTENAW COUNTY, MICHIGAN.

I hereby certify that there are no tax liens or titles held by the State on the lands described here, and that there are no tax liens or titles held by individuals on said lands for the five years preceding the 2nd day of January, 1927 and that the taxes for said period of five years are fully paid as shown on the records of this office.

Frank H. Tice
County Treasurer.

This plat was approved by the Township Board of the Township of Bois, Washtenaw County, Michigan, at a meeting held May 27, 1929.....

James Smith
Clerk.

This plat was approved by the Board of County Auditors of Washtenaw County, Michigan, this 1. day of August, 1915.

L. O. Perkins
 William M. Fowler
 Edward L. Brown

Notes: All dimensions are given in feet and decimals thereof.

[illegible]

Designed and Sealed in the Presence of

<i>Robert James E. Hogens</i>	Pro
<i>Edw. W. Williams V. B. 31</i>	Sec.

State of Michigan
County of Washtenaw " *Way* " before me
On this 1st day of _____, 1934, before me
Notary Public in and for said County appeared James E.
" *James E. Perkins* " and " *William M. Benz* " together, to me personally known, who
declared under oath that they are the owners and proprietors of the " *Way* " and
Selling such by said name and did say that they are the P-
and Secretary, respectively, of the " *WAYNE - WECOL*
" *WECOL* " COMPANY, a Michigan Company, and that the seal affixed
to said instrument is the corporate seal of said corporation
and that said instrument was signed and sealed in behalf of
said corporation by authority of its Board of Directors and
the said " *James E. Perkins* and " *William M. Benz* " acknowledge
said instrument to be the free, act and deed of said
corporation.

James E. Perkins
Secretary
Mary County, Washtenaw County, Michigan,
Commission expires *October 15, 1934*

DESCRIPTION

The Land embraced in the annexed plat
of "SCOTO HILLS NUMBER ONE" accumulation
of part of the southeast quarter, section 26,
Sole Township, Washtenaw County, Michigan,
is described as follows:

Beginning at the southwest corner of section 24,
Town two south, range five east, Sole Township, Washtenaw
County, Michigan; thence N. 8°-31' E. 79.25 feet to the inter-
section of the 36°-30' E. line of Dexter Avenue with the West line
of said section 24; thence S. 12°-31' E. along the East line of section 24
1250.56 feet; thence N. 87°-42'-30" W. 1271.6 feet to the intersection of
1335.40 feet to the east and west quarter line of section 24; thence N. 67°-30' W.
along said quarter line, 640.1 feet; thence N. 10°-40'-30" W. along the east line of
express Little Farms' 1591.88 feet to the northerly line of Dexter Avenue; thence
N. 45°-13' E. along the northerly line of Dexter Avenue, 22.02 feet; thence S. 26°-33'-30" E.
835.70 feet; thence E. 61°-43' E. 1524.35 feet to the place of beginning.

See Liber 994 Page 387

DEXTER AVENUE HILLS

A SUBDIVISION OF PART OF THE WEST HALF OF SECTION 24, SCIO TOWNSHIP, WASHTENAW COUNTY, MICHIGAN.

SCALE: ONE INCH = TWO HUNDRED FEET

DEDICATION
NOW ALL MEN BY THESE PRESENTS, That we "DEXTER AVENUE HILLS LAND COMPANY" a Michigan corporation by Jay G. Frey President, and John F. Kilbourn Secretary as proprietor, and the "FARMERS AND MECHANICS BANK" a Michigan corporation by Herbert A. Williams President, and Fred T. Stone Cashier as mortgagee, have caused the land embraced in the annexed plat to be surveyed, laid out and plotted to be known as "DEXTER AVENUE HILLS", a subdivision of part of the west half of section 24, Scio Township, Washtenaw County, Michigan, and that the streets and alleys as shown on said plat are hereby dedicated to the use of the public.

"DEXTER AVENUE HILLS LAND COMPANY"
"FARMERS AND MECHANICS BANK"

Signed and Sealed in the presence of
Jay G. Frey, President
John F. Kilbourn, Secretary

STATE OF MICHIGAN
COUNTY OF WASHTENAW
On this 11th day of May, A. D. 1925, before me, Jay G. Frey, a Notary Public in and for said county, appeared Jay G. Frey and John F. Kilbourn to me personally known, who being each by me duly sworn did say that they are the President and Secretary respectively of the "DEXTER AVENUE HILLS LAND COMPANY", a Michigan corporation, and that the seal affixed to said instrument is the corporate seal of said corporation and that said instrument was signed and sealed in behalf of said corporation by authority of its Board of Directors and the said Jay G. Frey and John F. Kilbourn acknowledged said instrument to be the free act and deed of said corporation.

Jay G. Frey, President
John F. Kilbourn, Secretary

My commission expires May 9, 1927

Signed and Sealed in the presence of
Herbert A. Williams, President
Fred T. Stone, Cashier

STATE OF MICHIGAN
COUNTY OF WASHTENAW
On this 11th day of May, A. D. 1925, before me, Jay G. Frey, a Notary Public in and for said county, appeared Herbert A. Williams and Fred T. Stone to me personally known, who being each by me duly sworn did say that they are the President and Cashier respectively of the "FARMERS AND MECHANICS BANK", a Michigan corporation, and that the seal affixed to said instrument is the corporate seal of said corporation and that said instrument was signed and sealed in behalf of said corporation by authority of its Board of Directors and the said Herbert A. Williams and Fred T. Stone acknowledged said instrument to be the free act and deed of said corporation.

Herbert A. Williams, President
Fred T. Stone, Cashier

My commission expires March 10, 1928

CERTIFICATE OF APPROVAL BY THE TOWNSHIP BOARD
This plat was approved by the Township Board of the Township of Scio, Washtenaw County, Michigan, at a meeting held on the 11th day of May, 1925.

CERTIFICATE OF APPROVAL BY THE BOARD OF COUNTY AUDITORS
Approved by the Board of County Auditors of Washtenaw County, Michigan, on this 11th day of May, 1925.

DESCRIPTION

The land embraced in the annexed plat of "DEXTER AVENUE HILLS" a subdivision of part of the west half of section 24, Scio Township, Washtenaw County, Michigan is described as follows: Commencing at the center of section 24, Town two south, Range five east, Meridian of Michigan; thence S. 7°-44' E. along the quarter line 1318.96 feet to the center line of Dexter Road, said course being the west line of the plat of "HAYDEN LITTLE FARM" subdivision; thence S. 41°-13' W. along the center line of Dexter Road 27.31 feet; thence continuing along said center line S. 65°-24' W. 100.48 feet; thence S. 25°-07' E. 561.32 feet; thence S. 70°-37'-30" E. 65.12 feet; thence S. 7°-44' E. 535.16 feet to the east and west quarter line of said section 24; thence S. 67°-28' W. along said quarter line 171.9 feet; thence S. 7°-07'-30" E. 722.6 feet; thence S. 25°-54' E. 272.6 feet; thence S. 2°-04' E. 504.3 feet; thence S. 67°-28' W. 22.82 feet; thence S. 11°-05' E. 756.9 feet; thence S. 71°-45' E. 427.35 feet; thence S. 1°-49' E. 705.3 feet; thence S. 25°-16' E. 216.35 feet to an iron stake at 212.2 feet west of the north and south quarter line; thence S. 7°-44' E. 1253.6 feet to the east and west quarter line; thence S. 67°-28' W. along said quarter line 212.2 feet to the place of beginning.

SURVEYOR'S CERTIFICATE

I hereby certify that the plat herein delineated is a correct one and that permanent metal monuments of not less than one inch in diameter and fifteen inches in length set in a concrete base at least four inches in diameter and forty-eight inches in depth have been placed at points marked lines on as thereon shown at all angles in the boundaries of the land plotted, at all the intersections of streets, intersections of alleys, or of streets and alleys, and at the intersections of streets and alleys with the boundaries of the plat as shown on said plat.

W. H. H. H. H.
Registered Civil Engineer.

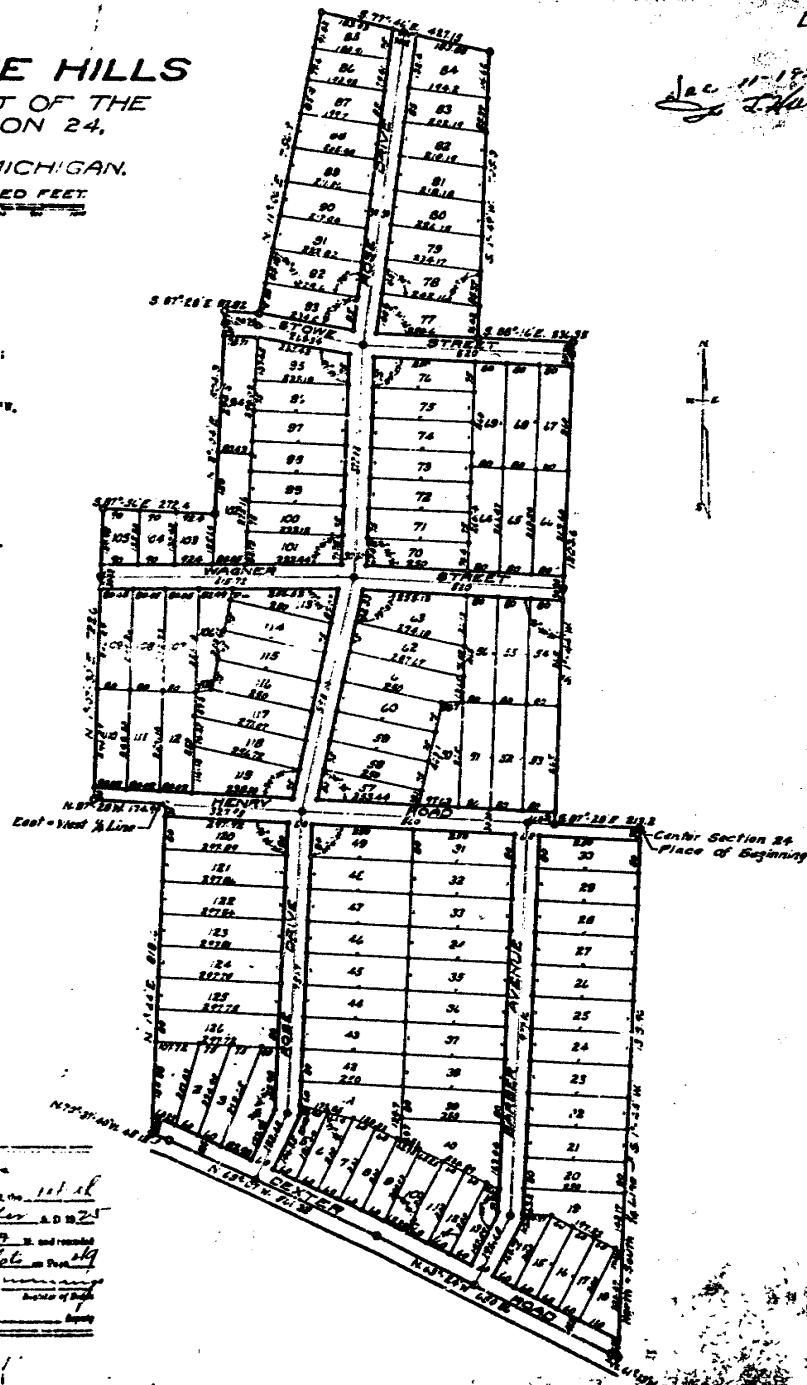
TAX CERTIFICATE OFFICE OF THE COUNTY TREASURER WASHTENAW COUNTY, MICHIGAN.

I hereby certify that there are no tax liens or titles held by the State on the lands described above, and that there are no tax liens or titles held by individuals on said lands for the five years preceding the 11th day of May, 1925 and that the taxes for said period of five years are paid, as shown by the records of this office.

Malcolm E. Blum.
County Treasurer.

Notes:
All dimensions are given in feet and decimals thereof.

RECORDED
11/16
11/30
John A. ...
County Clerk



See Liber 994 Page 387 See Liber 1050 Page 657

See Liber 1054 Page 518

"THE EVERGREENS"

A SUBDIVISION OF PART OF THE SOUTH HALF,
SECTION 24, SCIO TOWNSHIP,
WASHTENAW COUNTY, MICHIGAN.
SCALE: ONE INCH = ONE HUNDRED SIXTY FEET.

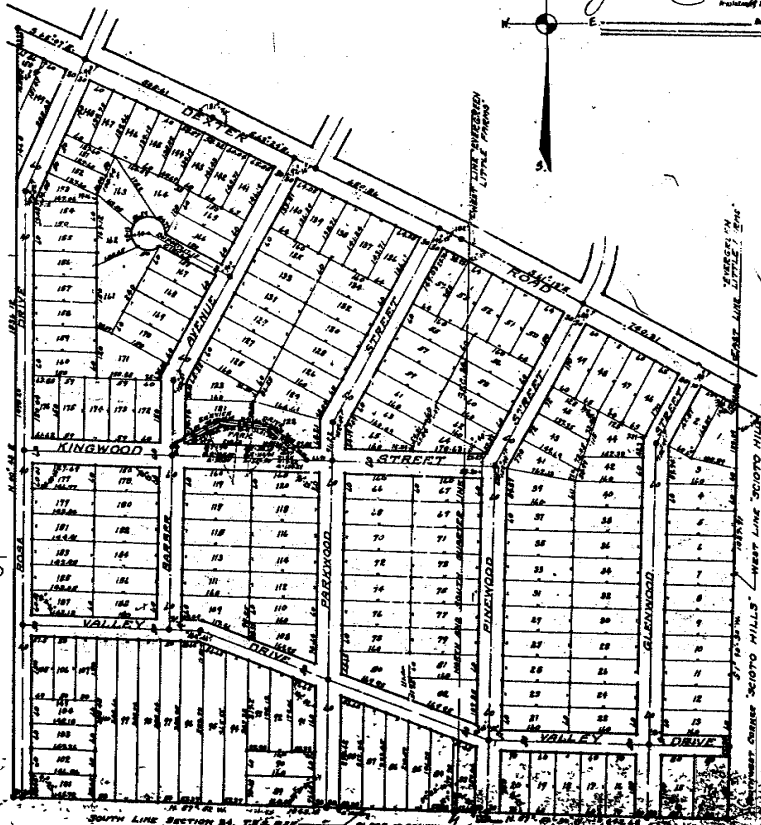
BEFORE ME, JAMES H. SCHAEFFER, Notary Public in and for the County of Washtenaw, Michigan, on this 10th day of May, 1927, before me a Notary Public in and for said county personally came the above named Mark H. Schaeffer, Charles L. Brooks and Laura P. Brooks, husband and wife, Myrland A. Norton and Flora Norton, husband and wife, Floyd A. Bergquist and Mildred T. Bergquist, husband and wife, and Ralph L. Leavitt a single man, who caused the land embraced in the annexed plat to be surveyed, laid out and platted to be known as "THE EVERGREENS" a subdivision of part of the south half, section 24, Scio Township, Washtenaw County, Michigan, and that the streets and alleys shown on said plat are hereby dedicated to the use of the public.

Witness my hand and seal in the presence of
James H. Schaeffer, Notary Public in and for the County of Washtenaw, Michigan.
Charles L. Brooks (L.S.)
Laura P. Brooks (L.S.)
Myrland A. Norton (L.S.)
Flora Norton (L.S.)
Floyd A. Bergquist (L.S.)
Mildred T. Bergquist (L.S.)
Ralph L. Leavitt (L.S.)

State of Michigan
County of Washtenaw
On this 10th day of May, 1927, before me a Notary Public in and for said county personally came the above named Mark H. Schaeffer, Charles L. Brooks and Laura P. Brooks, husband and wife, Myrland A. Norton and Flora Norton, husband and wife, Floyd A. Bergquist and Mildred T. Bergquist, husband and wife, and Ralph L. Leavitt a single man, who caused the above dedication and acknowledgment to be made from act and deed.
James H. Schaeffer, Notary Public in Washtenaw County, Michigan.
My commission expires July 1, 1928.

BEFORE ME, JOHN C. FRITS, administrator for the estate of Clara C. Frits, pursuant to the provisions of power of administration granted by the Judge of Probate for Washtenaw County, Michigan, dated February 14, 1925, and on record in the Probate office; as proprietor, have caused the land embraced in the annexed plat to be surveyed, laid out and platted to be known as "THE EVERGREENS" a subdivision of part of the south half, section 24, Scio Township, Washtenaw County, Michigan, and that the streets and alleys shown on said plat are hereby dedicated to the use of the public.

Witness my hand and seal in the presence of
John C. Frits, Administrator for the estate of Clara C. Frits.
John C. Frits, Administrator for the estate of Clara C. Frits.
My commission expires July 1, 1928.



DESCRIPTION
The land embraced in the annexed plat of "THE EVERGREENS" a subdivision of part of the south half, section 24, Scio Township, Washtenaw County, Michigan, is described as follows: Commencing at the south quarter post of section 24, town two south, range five east, Washtenaw County, Michigan, thence N. 87° - 55' E. along the north line of said section 24, 20 feet, thence N. 00° - 45' E. N. 234.12 feet to the center line of Dunter Road; thence S. 88° - 15' E. along said center line 525.51 feet to the corner of section 24, corner 21st of Dunter Road S. 88° - 24' E. 620.88 feet; thence continuing along said center line S. 88° - 15' E. 740.12 feet to the west line of "Scio Hills" thence S. 1° - 40' - 30" E. along said west line 237.91 feet to the south line of section 24; thence S. 87° - 55' - 30" E. along said south line 644.06 feet to the place of beginning.

TAX CERTIFICATE
OFFICE OF THE COUNTY TREASURER
WASHTENAW COUNTY, MICHIGAN
I hereby certify that there are \$10.00 tax liens or titles held by the State on the lands described here, and that there are \$10.00 tax liens or titles held by individuals on said lands for the five years preceding the 1st day of January, 1927, and that the same for said period of five years are fully as shown by the records of this office.
Dwight L. Packard, County Treasurer

SURVEYOR'S CERTIFICATE
I hereby certify, that the plat herein delineated was surveyed and that permanent steel monuments of not less than one inch in diameter and fifteen inches in length set in a concrete base at least four inches in diameter and forty-eight inches in depth have been placed at points marked thereon, as shown thereon at all angles in the boundaries of the land platted, at all intersections of streets, intersections of alleys, or at other points, and at the intersections of streets and alleys within the boundaries of the plat, as shown on said plat.
H. H. Allen, Registered Civil Engineer

CERTIFICATE OF APPROVAL
BY THE BOARD OF COUNTY AUDITORS
This plat was approved by the Board of County Auditors of Washtenaw County, Michigan, at a meeting held July 1, 1927.
Harold H. Hammond, Chairman
Charles L. Barstow

CERTIFICATE OF APPROVAL
BY THE TOWNSHIP BOARD
This plat was approved by the Township Board of the Township of Scio, Washtenaw County, Michigan, at a meeting held July 1, 1927.
J. J. Allen

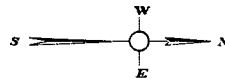
Re-subdivided in file of Plat. - Page 34

"EVERGREEN LITTLE FARMS"

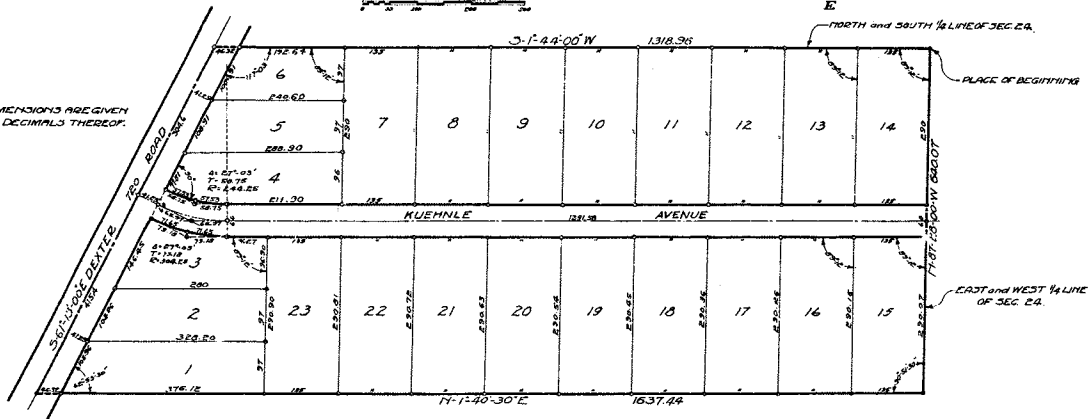
SUBDIVISION OF PART OF THE
SOUTHEAST ONE-QUARTER OF SECTION 24,
TOWNSHIP 2 SOUTH, RANGE 5 EAST,
WASHTENAW COUNTY, MICHIGAN.

SCALE: ONE INCH = ONE HUNDRED FEET.

Filed for Record
Jan 18-1923
J. L. Schaffer



NOTE: ALL DIMENSIONS ARE GIVEN
IN FEET AND DECIMALS THEREOF.



DEDICATION

KNOW ALL MEN BY THESE PRESENTS, That W. L. Schaffer, Jr., of the County of Washtenaw, State of Michigan, do hereby certify that the land embraced in the above plat is the land owned and held by the State of Michigan, and that the same is being dedicated to the use of the public.

On this 18th day of January, 1923, before me, a Notary Public in and for the County of Washtenaw, State of Michigan, known to me to be the persons who executed the above dedication, and acknowledged the same to be their act and deed.

My Commission expires _____

TAX CERTIFICATE

OFFICE OF THE COUNTY TREASURER, WASHTENAW COUNTY, MICHIGAN.
I hereby certify that there are no taxes or liens held by the State on the lands described herein, and that there are no taxes or liens held by individuals on said lands for the five years preceding the date of this certificate, and that the fees for said period of five years, which are now due, are shown by the records of this office.

County Treasurer

DESCRIPTION

The land embraced in the above plat of "EVERGREEN LITTLE FARMS" is a portion of the Southeast One-Quarter of Section 24, Township 2 South, Range 5 East, Washtenaw County, Michigan, is described as follows: Commencing at the center point of section 24, Township 2 South, Range 5 East, Michigan, thence S 1/4-44-00 W along the North and South quarter line of said section 24, 13.836 feet to its intersection with the center line of Center Road, thence S 45-13-00 E along the center line of Center Road 720.00 feet, thence N 1/4-40-30 E 137.44 feet to a point in the East half of said section 24, thence to the place of beginning.

J. L. Schaffer, Jr.
Notary Public
Washtenaw County, Michigan

SURVEYOR'S CERTIFICATE

I hereby certify that the plat herein delineated is a correct one, and that permanent monuments, consisting of iron pipes one half inch in diameter and marked with the number of the lot, have been planted at points marked thus: on the corners of the lots, and at the boundaries of the land, and of all other points of interest.

Surveyor

CERTIFICATE OF APPROVAL

BY THE BOARD OF COUNTY COMMISSIONERS.
Approved by the Board of County Commissioners of Washtenaw County, Michigan, this 18th day of January, 1923.

CERTIFICATE OF APPROVAL

BY THE TOWNSHIP BOARD.
This plat was approved by the Township Board of the Township of Washtenaw County, Michigan, at a meeting held at _____ on the _____ day of _____, 1923.

SCALE ONE INCH = ONE HUNDRED FEET

ABSTRACT

KNOW ALL MEN BY THESE PRESENTS, That we Roland H. Klittler and Ethel M. Klittler his wife, as proprietors have caused the land embraced in the annexed plat to be surveyed, laid out and platted, to be known as SEVEN GREEN LITTLE FARMS, a subdivision of a part of the southeast one quarter of section 26, town 26 north, range five east, Washtenaw County, Michigan, and that the streets as shown on said plat are hereby dedicated to the use of the public.

FIGURE 4-2. BEARING-ON DISTANCE OF

Poland. H. H. Slotters (4. 5)
Ethel M. Slotters;

STATE OF MICHIGAN, }
 } ss.

On this, 30 day of July, 1924, before me a Notary Public in and for said county, personally came the above named Roland H. Slittler and Ethel M. Slittler his wife, known to me to be the persons who executed the above declaration, and acknowledged the same to be their free and good

Good
Julien Rayburn
 Notary Public, Westland, Michigan
 My commission expires *May 10 1926*

CERTIFICATE OF APPROVAL
BY THE BOARD OF COUNTY AUDITORS

Approved by the Board of County Auditors of Washtenaw County,
Michigan, this 4 day of August 1924

Walter M. Fowler
Chairman
Charles L. Brown

• CERTIFICATE OF APPROVAL
BY THE COMPANY BOARD

This plat was approved by the Township Board of the Township of , Washtenaw County, Michigan, at a meeting held

Received 1st 1924
Jay Smith
Clerk

DESCRIPTION

"RESUBDIVISION OF
The land embraced in the annexed plat of EDWARD H. LITTLE
FARMING subdividing a part of the southwest one
quarter of section 24, town two south, range five east,
Washtenaw County, Michigan, is described as follows:
Commencing at the center point of section 24, town two south,
range five east, Midland of Michigan; thence 3 1'-44"-00"
N. along the north and south quarter line of said section 24
to the foot, to a "x" intersection with the center line of
the center road, thence 131° 15' 00" E. 126.75 feet to the
center of the center road, thence 1° 44'-30" E. 126.75
feet to a point in the center of west quarter line of section
24 - - - - - N. 87° - 29' N. 6-07 feet to the place of begin line

TAX CERTIFICATE

OFFICE OF THE COUNTY TREASURER, EASTLAFAY COUNTY, MICHIGAN

I hereby certify, that there are ^{no} tax liens or titles held by the State on the lands described above, and that there are ^{no} tax liens or titles held by individuals on said lands, for the five years preceding the 1st day of July, 1904, and that the taxes for said period of five years are ^{fully} paid, as shown by the records of said office.

Wm. H. E. Blum
County Treasurer

REPLY - 11/11/67

I hereby certify, That the plan herein described is a correct one, and that German's monuments, consisting of iron pipes one-half inch or more in diameter and twenty inches or more in length have been planted at points marked "has" as has been shown at all angles in the boundaries of the land plat-on and at all intersections of streets.

.. *J. H. Atwell*
Registered Civil Engineer

ST }
Glasgow County
Book A ST 1970-1971 265
day of August A.D. 1974
at 1050 s' dusk B. M. and recorded
in La S. 1974 on Page 21
CVE
Signature of Clerk
Fredrick A. [illegible]

Notes: All dimensions are given in Feet and Decimals thereof.

