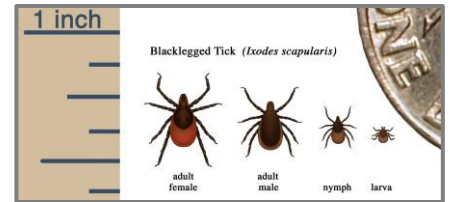


2024 Michigan Lyme Disease Risk Map

Lyme disease is an emerging disease transmitted by the blacklegged tick in Michigan. Local risk for Lyme disease varies depending on whether infected ticks are in the area. Several local and state agencies partner to conduct surveillance for Lyme disease in people and animals. The below map classifies risk based upon field collected and infected ticks and reported human cases of Lyme disease in Michigan (see the legend for specific criteria). The map is updated as new information becomes available.



Blacklegged ticks are active from March to November in Michigan. They are commonly found in wooded and brushy habitats.

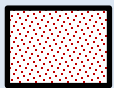
For more information about Lyme disease prevention, visit www.michigan.gov/lyme

LEGEND



County with known risk for Lyme Disease

- At least 2 confirmed local exposures, and/or
- Blacklegged ticks with Lyme bacteria



County with potential risk for Lyme disease

- Adjacent to a confirmed county and/or
- Blacklegged ticks present but not infected with Lyme disease bacteria



County with negative tick sampling information or lacking information

