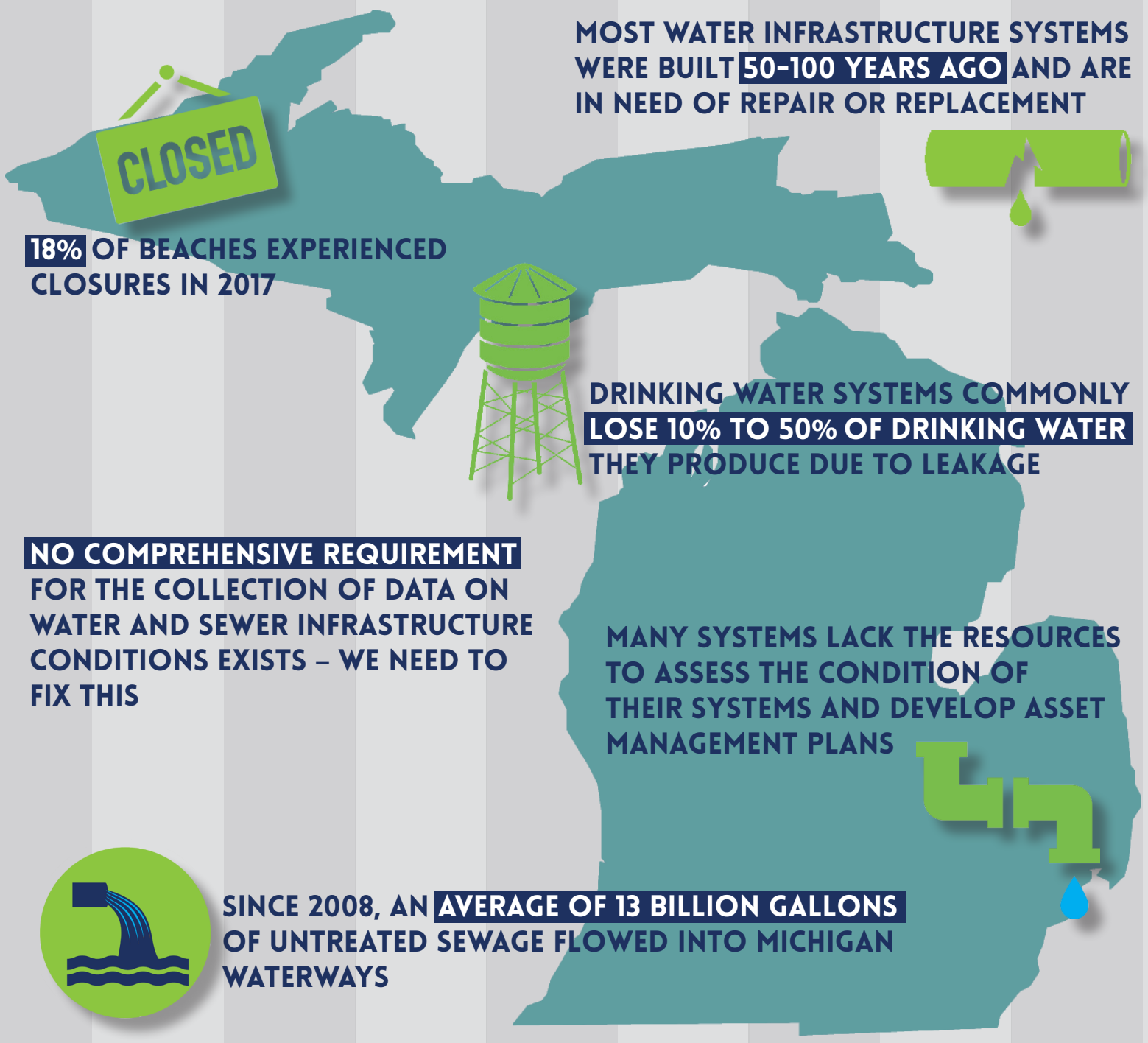


# PROTECTING PUBLIC HEALTH AND THE ENVIRONMENT

## INVESTING IN MICHIGAN'S WATER INFRASTRUCTURE



MOST WATER INFRASTRUCTURE SYSTEMS WERE BUILT **50-100 YEARS AGO** AND ARE IN NEED OF REPAIR OR REPLACEMENT

**18%** OF BEACHES EXPERIENCED CLOSURES IN 2017

DRINKING WATER SYSTEMS COMMONLY **LOSE 10% TO 50% OF DRINKING WATER** THEY PRODUCE DUE TO LEAKAGE

**NO COMPREHENSIVE REQUIREMENT** FOR THE COLLECTION OF DATA ON WATER AND SEWER INFRASTRUCTURE CONDITIONS EXISTS – WE NEED TO FIX THIS

MANY SYSTEMS LACK THE RESOURCES TO ASSESS THE CONDITION OF THEIR SYSTEMS AND DEVELOP ASSET MANAGEMENT PLANS



SINCE 2008, AN **AVERAGE OF 13 BILLION GALLONS** OF UNTREATED SEWAGE FLOWED INTO MICHIGAN WATERWAYS

**\$110 MILLION ANNUALLY WILL PROVIDE A STRONG FOUNDATION FOR WATER AND SEWER INFRASTRUCTURE REPAIR AND REPLACEMENT**

# MICHIGAN'S WATER INFRASTRUCTURE NEEDS

INCREASING WATER INFRASTRUCTURE INVESTMENT BY AN AFFORDABLE \$5 PER PERSON, PER YEAR WILL GENERATE \$110 MILLION

## CATEGORY

## ANNUAL AMOUNT

### 1. INTEGRATED ASSET MANAGEMENT

\$25 million

- Drinking water, wastewater, and stormwater plans
- Ongoing data collection and training
- Integrate water and sewer plans with other infrastructure

### 2. CAPITAL GRANT/LOAN PROGRAM

\$75 million

- Lead service line replacements
- Water, sewer, stormwater capital projects

### 3. EMERGENCY INFRASTRUCTURE FAILURE FUND

\$10 million

- Grant and loan programs for communities in financial need with emergency water or sewer failures

**TOTAL: \$110 MILLION**

- AN AFFORDABLE \$5/PERSON/YEAR WOULD ADD ABOUT 2% TO AN ANNUAL WATER BILL
- THE PROPOSAL WILL PHASE IN OVER THE NEXT 5 YEARS  
Phase in amounts are \$1/year each year for 5 years:  
■ 2020 – \$1/person ■ 2021 – \$2/person ■ 2022 – \$3/person ■ 2023 – \$4/person ■ 2024 – \$5/person
- 80% OF MONEY GENERATED WOULD BE RETURNED TO THE REGION IT WAS GENERATED IN
- THE PROPOSAL WOULD EXPIRE IN 2040