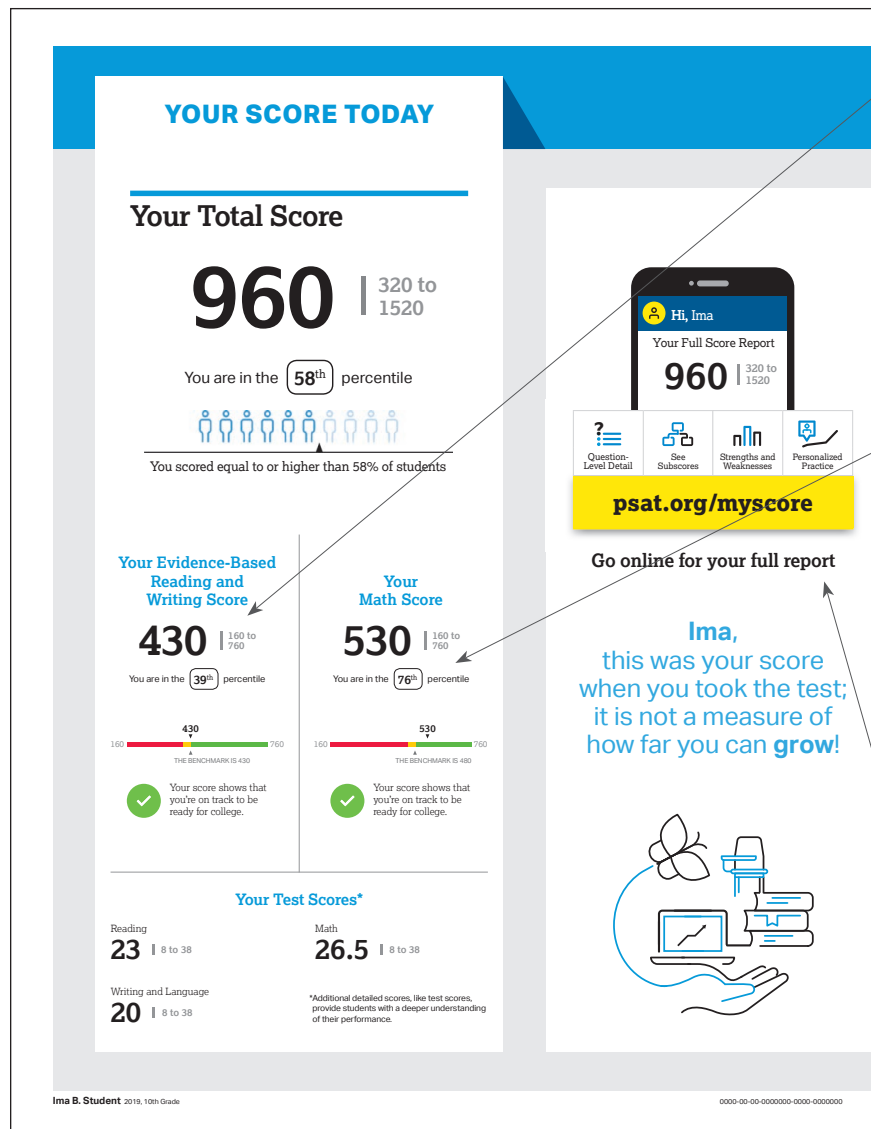


A PARENT TUTORIAL

Understanding 2019 PSAT 10 Results

A Case Study: Ima B. Student's PSAT 10 Score Report

Take a look at Ima B. Student's sample score report below and on the back. Use the information to help you interpret your student's PSAT™ 10 Score Report.



What are Ima's scores?

Ima's Evidence-Based Reading and Writing score is 430, and her Math score is 530. In Evidence-Based Reading and Writing, Ima's score meets the benchmark for college readiness. In Math, however, Ima is exceeding the benchmark and is on track. Test scores, cross-test scores, and subscores can give Ima a better understanding of areas to work on.

What are Ima's score percentiles?

Since Ima is in the 10th grade, the percentiles compare her scores with those of all 10th graders in the nation. Ima scored as well as or better in Evidence-Based Reading and Writing than 39% of a nationally representative group of sophomores. In Math, she scored as well as or better than 76% of a nationally representative group of sophomores. Additional percentiles are available in Ima's online score report.

How can Ima see her full report?

Ima is directed to psat.org/myscore to see her full score report, learn how to prepare for the SAT®, and see her potential for AP® coursework.

YOUR PATH TOMORROW

Here's what else is waiting for you online:

- 1

A link to free personalized practice on Khan Academy
Share your scores with Khan Academy to get your personalized practice.
- 2

A list of the challenging courses you're ready for
Congrats! Your scores show you're ready to succeed in AP® courses.
- 3

Your customized starter college list
Check out the tools at BigFuture™ to kick-start your college plans.

Money for College

Our PSAT 10 scholarship partners award over \$255 million a year and they're on the lookout for qualified students.

If you said "yes" to Student Search Service® on your PSAT 10 answer sheet, you could be invited to apply for one of their college scholarships.

If you didn't, it's not too late to opt in.

Learn more about each scholarship program and find out how to opt in at psat.org/scholarships.

+\$255 Million
IN COLLEGE SCHOLARSHIPS

© 2019 The College Board. College Board, AP, SAT, and the acorn logo are registered trademarks of the College Board. PSAT/10 is a registered trademark of the College Board and the Khan Academy logo is a registered trademark of the College Board or Khan Academy. Khan Academy is a registered trademark in the United States and other jurisdictions.

What are Ima's next steps?

When Ima accesses her full score report at psat.org/myscore, she'll also be able to connect to free, personalized practice on Khan Academy®, see her potential for AP coursework, and use the college- and career-planning resources at BigFuture™.

Score Report

How can Ima learn from her answers?

Using her score report with her PSAT 10 test booklet, Ima can see the actual questions, correct answers, and difficulty level alongside her own answers. She can use her online score report to review the questions she answered incorrectly or omitted, and to see detailed answer explanations.

NOTE: For students at schools testing in February or March, the actual questions, answers, and answer explanations won't be provided, and the score report won't include the correct answer column.

Your Question-Level Feedback

QUESTIONS OVERVIEW

Section	Total Questions	Correct Answers	Incorrect Answers	Omitted Answers
READING	47	21	25	1
WRITING AND LANGUAGE	44	17	26	1
MATH - CALCULATOR	31	15	14	2
MATH - NO CALCULATOR	17	10	7	0

*Tip: A great way to start improving: check out the easy questions you missed first.

KEY

- ✓ Correct
- ✗ Omitted
- U Unanswerable
- X Multi-Grid/Inconnect
- Easy Question
- Medium Question
- Hard Question
- Easy Question Missed*

READING					WRITING AND LANGUAGE					MATH - CALCULATOR					MATH - NO CALCULATOR				
Question #	Correct	Your Answer	Difficulty		Question #	Correct	Your Answer	Difficulty		Question #	Correct	Your Answer	Difficulty		Question #	Correct	Your Answer	Difficulty	
1	A	✓	■		1	D	✓	■		1	B	✓	■		15	C	✓	■	
2	B	✓	■		2	B	✓	■		2	A	✓	■		16	B	✓	■	
3	B	✓	■		3	C	✓	■		3	B	✓	■		17	D	✓	■	
4	B	✓	■		4	C	✓	■		4	D	✓	■		18	B	✓	■	
5	C	✓	■		5	B	✓	■		5	B	✓	■		19	C	✓	■	
6	D	✓	■		6	B	✓	■		6	A	✓	■		20	B	✓	■	
7	B	✓	■		7	A	✓	■		7	B	✓	■		21	B	✓	■	
8	A	✓	■		8	B	✓	■		8	C	✓	■		22	D	✓	■	
9	D	✓	■		9	A	✓	■		9	A	✓	■		23	D	✓	■	
10	A	✓	■		10	D	✓	■		10	D	✓	■		24	C	✓	■	
11	D	✓	■		11	D	✓	■		11	D	✓	■		25	B	✓	■	
12	D	✓	■		12	B	✓	■		12	A	✓	■		26	D	✓	■	
13	D	✓	■		13	C	✓	■		13	B	✓	■		27	D	✓	■	
14	A	✓	■		14	C	✓	■		14	C	✓	■						
15	C	✓	■		15	D	✓	■											
16	B	✓	■		16	B	✓	■											
17	D	✓	■		17	B	✓	■											
18	B	✓	■		18	A	✓	■											
19	A	✓	■		19	B	✓	■											
20	C	✓	■		20	C	✓	■		28	65				60				
21	B	✓	■		21	A	✓	■		29	0-12				2				
22	D	✓	■		22	A	✓	■		30	1368				30				
23	B	✓	■		23	C	✓	■		31	85				75				
24	D	✓	■		24	D	✓	■											
25	C	✓	■		25	C	✓	■											
26	B	✓	■		26	A	✓	■											
27	B	✓	■		27	A	✓	■											
28	A	✓	■		28	A	✓	■											
29	D	✓	■		29	D	✓	■											
30	B	✓	■		30	C	✓	■											
31	D	✓	■		31	D	✓	■											
32	A	✓	■		32	B	✓	■											
33	C	✓	■		33	D	✓	■											
34	A	✓	■		34	D	✓	■											
35	A	✓	■		35	D	✓	■											
36	C	✓	■		36	B	✓	■											
37	B	✓	■		37	C	✓	■											
38	C	✓	■		38	A	✓	■											
39	C	✓	■		39	C	✓	■											
40	C	✓	■		40	D	✓	■											
41	B	✓	■		41	D	✓	■											
42	B	✓	■		42	A	✓	■											
43	A	✓	■		43	C	✓	■											
44	A	✓	■		44	B	✓	■											
45	A	✓	■																
46	D	✓	■																
47	C	✓	■																

960 Your Full Score Report

psat.org/myscore

Go online for your full report

Question-Level Detail

See Subscores

Strengths and Weaknesses

Personalized Practice

Ima B. Student 2018, 10th Grade

Score Report