

North Country Community Mental Health
Section 460 Cost Allocation Report

Attached is the Section 460 Cost Allocation Plan for North Country Community Mental Health. For fiscal year 2007 the plan is based on the budget. This plan consists of the following:

- Certificate of 460 Cost Allocation Plan
- Organizational Chart that summarizes how costs are allocated
- Total budgeted expenditures that will be allocated between direct and administrative services
- Program descriptions which indicates allocation between direct and administrative
- Budget Analysis, detailing program reporting unit analysis by line items, direct and administrative costs, with allocated administration by funding streams
- Various expense allocation methodologies used to allocate line item costs to reporting units (programs)
- An analysis of Contracted Services and how they are allocated to funding streams
- A summary of direct services costs by program type
- Detailed narrative and report on administrative costs
- A narrative and report on how costs are allocated to funding streams
- Non-Medicaid Legislative Report Detailed
- Medicaid Legislative Report Detailed

Please contact me if you have any questions or need further information at 231-439-1246 or e-mail me at dwheeler@norcocmh.org.

Donna Wheeler
Finance Director
North Country Community Mental health

CERTIFICATE OF 460 COST ALLOCATION PLAN

This is to certify that I have reviewed the 460 cost allocation plan submitted herewith and to the best of my knowledge and belief:

(1) All costs included in this proposal [identify date] to establish cost allocations or billings for [identify period covered by plan] are allowable in accordance with the requirements of OMB Circular A 87, "Cost Principles for State, Local, and Indian Tribal Governments," and the Federal award(s) to which they apply. Unallowable costs have been adjusted for in allocating costs as indicated in the cost allocation plan.

(2) All costs included in this proposal are properly allocable to service or administrative costs on the basis of a beneficial or causal relationship between the expenses incurred and the categories to which they are allocated in accordance with applicable requirements. Further, the same costs that have been treated as indirect costs have not been claimed as direct costs. Similar types of costs have been accounted for consistently.

(3) All costs included in this proposal are allocated to service or administration and reported in compliance with the Michigan Department of Community Health Cost Allocation Requirement for [identify period covered by plan].

I declare that the foregoing is true and correct.

Governmental Unit: North Country Community Mental Health

Signature: 

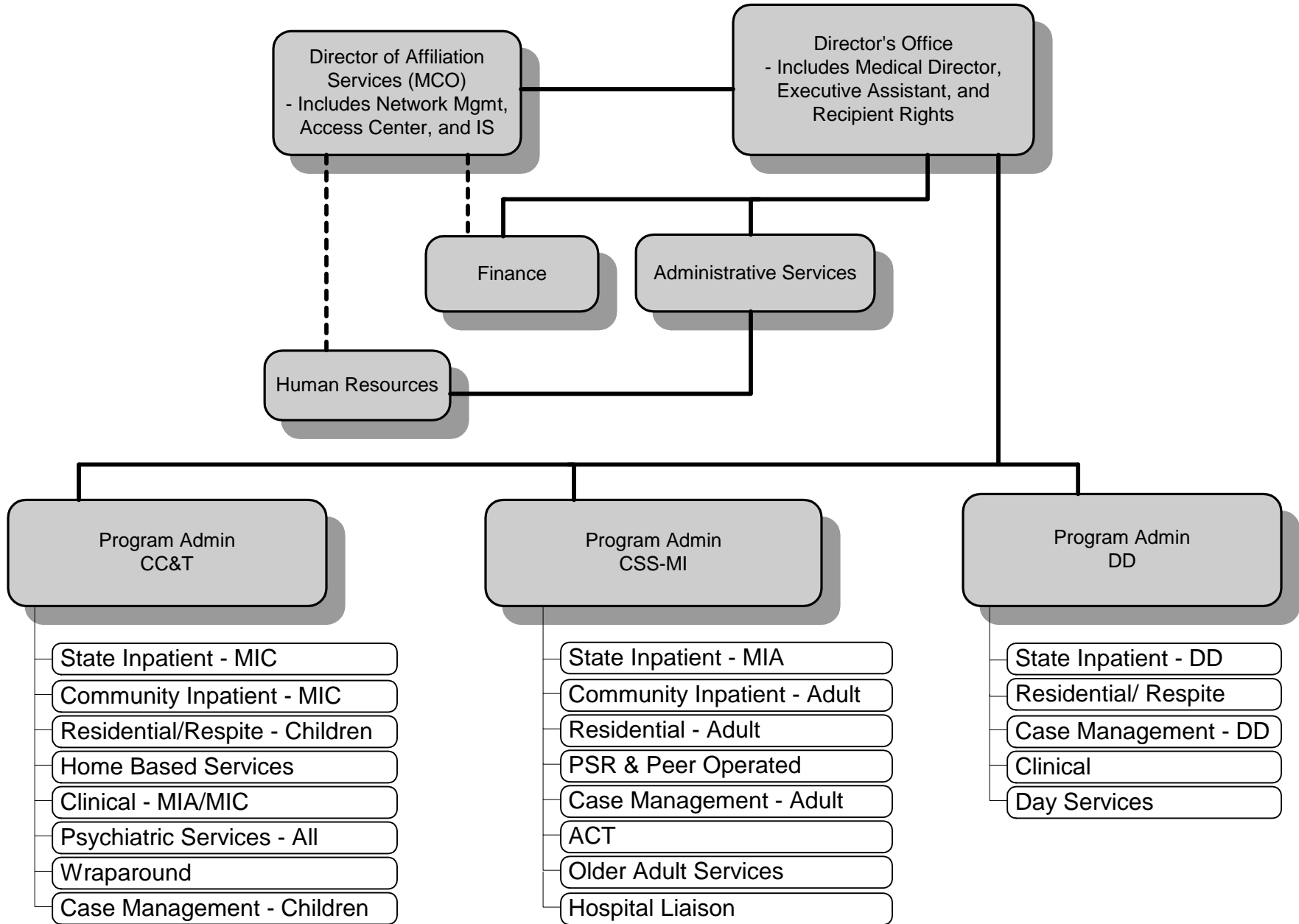
Name of Official: Donna Wheeler

Title: Finance Director

Date of Execution: February 27, 2007

-

North Country Community Mental Health Organization Chart for Section 460 Compliance Report



Please note that the dotted lines indicate that Human Resources and Finance serve both the Affiliation and the Provider operation.

North Country Community Mental Health
 Total Budgeted Expenditures
 For FY2007

	Provider Expenses	MCO Expenses	Total Expenses
Salaries & Wages-Direct	\$ 7,581,146	\$ 859,520	\$ 8,440,666
Fringe Benefits-Direct	2,718,635	306,643	3,025,278
			-
Supplies-Direct	208,510	30,100	238,610
Supplies-Allocated	138,542	3,458	142,000
Pharmacy/Injectables-Direct	223,725	-	223,725
Communications-Direct	147,381	12,582	159,963
Communications-Allocated	87,263	418	87,681
Travel/Conference-Direct	298,527	45,319	343,846
Vehicle Gas-Direct	24,178	-	24,178
Vehicle Gas-Allocated	69,153	1,047	70,200
Transportation-Direct	35,133		35,133
Advertising-Direct	58,623	2,000	60,623
Insurance-Liability/Doctors-Direct	22,000	-	22,000
Insurance-Liability/Doctors-Allocated	115,942	8,958	124,900
Insurance-Workers Comp-Allocated	118,609	9,164	127,773
Insurance-Unemployment-Direct	74,172	6,000	80,172
Utilities-Direct	34,222		34,222
Utilities-Allocated	74,463	2,286	76,749
Repair/Maintenance-Building Direct	40,474	7,832	48,306
Repair/Maintenance-Building Allocated	81,620	2,722	84,342
Repair/Maintenance-Equipment Direct	18,644	5,468	24,112
Repair/Maintenance-Equipment Allocated	94,232	1,131	95,363
Repair/Maintenance-Vehicle-Direct	19,200	-	19,200
Repair/Maintenance-Vehicle-Allocated	83,744	1,256	85,000
Occupancy-Rent-Direct	531,113	41,999	573,112
Occupancy-Rent-Allocated	440,821	6,001	446,822
Rent-Equipment-Direct	3,039	4,018	7,057
Rent-Equipment-Allocated	62,336	3,482	65,818
Miscellaneous-Direct	87,446	19,000	106,446
Equipment-Direct	135,278	15,000	150,278
Depreciation Expense-Direct	35,471	69,277	104,748
Depreciation Expenses-Allocated	70,430	723	71,153
Contractual-Community Inpatient	497,000	1,454,851	1,951,851
Contractual-Other	16,194,151	172,039	16,366,190
Prime Subcontractors-Northeast Michigan CMH		17,773,360	17,773,360
Prime Subcontractors-Ausable Valley CMH		8,966,163	8,966,163
Prime Subcontractors-Northern Mich Substance Abuse Services		691,699	691,699
Local Match Draw Down	431,035		431,035
QAAP		3,341,131	3,341,131
	\$ 30,856,258	\$ 33,864,647	\$ 64,720,905
Less Access Center/Inpatient Claims for Northeast & AV CMH*		(91,682)	(91,682)
	30,856,258	33,772,965	64,629,223

*These are charges to Affiliates Northeast Michigan CMH and Ausable Valley CMH for the GF/MI Child/ABW portion of the access center, inpatient claims adjudication for the indigent population, and standards setting group dues.

North Country Community Mental Health Program Descriptions and Allocated Costing Methods

Provider Operations

Inpatient Programs

- MI Adult State Inpatient. This program includes costs for all state hospitalizations of MI Adult consumers. All costs in this program are direct.
- Hospital Transportation: This program includes non-Medicaid cost for transporting consumers to community hospitals. All costs in this program are direct.
- MI Adult Community Inpatient. This program includes costs for non-Medicaid local hospitalization for MIA consumers. All costs in this program are direct.
- MI Child State Inpatient. This program includes costs for all state hospitalizations of MI Child consumers. All costs in this program are direct.

Residential Services

- DD Residential Services. This program identifies various homes that large contract provider's operate. Also included are contracts with small AFC providers and self-determination agreements with consumers. Services provided are community living supports and personal care. All costs in this classification are direct.
- DD Respite Care. This program includes non-Medicaid costs for family friends respite care. All cost in this program are direct.
- MI Adult Residential and MI Adult Residential OBRA. This program includes costs for contracted community living supports and personal care for MI Adult consumers. All costs in this program are direct.
- Supportive Housing. Costs include community living supports provided to MI Adult individuals living in their own home. North Country Community Mental Health employs the staff to provide this service. All costs in this program are direct.
- Supportive Housing Block Grant. Costs include supports to consumers living in their own home. Costs include rent start-up costs. All costs in this program are charged to the grant and are direct.
- Supportive Housing-Bridge Street. Costs include short-term housing for consumers exiting Crisis Residential. All costs in this program are direct.
- Crisis Residential/Respite Residential. North Country Community Mental Health directly operates this program. Both crisis residential and respite residential services are provided to consumers in this program. All costs are direct.
- MI Child Residential. This program includes costs for contracted community living supports and personal care for MI Child consumers. Many of the residential placements are in CCI settings; therefore, costs cannot be charged to Medicaid. All cost in this program are direct.
- MI Child Respite. This program includes non-Medicaid costs for family friends respite care. All costs in this program are direct.

Skills Building & Day Support Services

- Day Support Contracts. North Country Community Mental Health contracts with Grand Traverse Industries, Bergmann Center, Crossroads Industries, Straits Area Services, and other small day services providers to provide skill building, supported employment, and community integration supports to individuals with developmental disabilities. All costs in this program are direct.
- DD Day Program. North Country Community Mental Health directly operates this program. Staff provide skill building services to consumers with developmental disabilities. All costs in this program are direct.
- PSR Clubhouse South and North. North Country Community Mental Health operates two clubhouses that offer rehabilitation and vocational services to MI Adult consumers. All costs in this program are direct.
- Day Services Alternatives. North Country Community Mental Health contracts with four service providers to provide day services alternatives, including supported employment, consumer enterprise, and other community integration activities. In FY2006, this program expanded services to individuals with developmental disabilities. All costs in this program are direct.
- Beacon Center. This is a peer operated contract program. All costs in this program are direct.
- Supported Employment. North Country Community Mental Health directly operates this program. Staff provide employment services to MI Adult consumers. All costs in this program are direct.

North Country Community Mental Health, Program Descriptions and Allocated Costing Methods

Clinical Services

- DD Clinical Services. Staff and contracted professionals provide clinical services to individuals with developmental disabilities. All costs in this program are direct.
- MI Adult/MI Child Outpatient Services. Staff provide outpatient therapy to MI Adult and MI Child consumers. All costs in this program are direct.
- Psychiatric Services. Staff and contracted psychiatrists provide psychiatric services to MI Adult, MI Child, and DD consumers. This includes 70% of the Medical Director. The other 30% is included in Administrative Services and is allocated via time study. All costs in this program are direct.
- Home Based Services. North Country Community Mental Health contracts with Northern Family Intervention Services to provide Home Based services to children. All costs in this program are direct.

Support Services

- DD Supports Coordination and Case Management. Staff provide supports coordination and case management services. All costs in this program are direct.
- MI Adult Case Management. Staff provide case management services to MI Adults. All costs in this program are direct.
- Assertive Community Treatment. North Country operates two ACT teams for MI Adult consumers. All cost in this program are direct.
- MI Child Case Management. Staff provide case management services to MI Children. All cost in this program are direct.

Other Support Services

- DD RICC. North Country Community Mental Health has two RICC programs, one in Cheboygan and another in Gaylord. These programs service DD individuals and are funded by grants. All costs in this program are direct.
- Child Waiver. Included is respite care provided to a client on the Child Waiver. This was short-term in FY07, as the waiver was discontinued. All costs in this program are direct.
- Older Adult Services. This includes OBRA Active Treatment, OBRA PASARR, and a small gate-keeping program for the elderly. All costs in this program are direct.
- Alzheimer's Grant. This is a pass-through grant delivered by four local service agencies. All costs in this program are direct, as indicated in the grant documents.
- Wrap Around. This program provides wrap-around services to MI Children. All costs in this program are direct.
- PMTO. This program is in start-up phase and will eventually serve MI Children when certified. All costs in this program are direct.
- Decisions to Actions. This is an indirect program for MI Children that are at risk. This program services MI Children and is not yet certified as a Medicaid program. All costs are direct and are charged to general and local funds.

Administrative Services

- DD Day Program Supervision. Included in this program is the cost of the DD Day Program Director. This person is a second line supervisor responsible for oversight of skill building and day services supports to the developmentally disabled population. This cost is allocated to all DD day services programs, prior to allocating costs to funding streams. Allocation of this cost to programs is based upon the total expense of each DD day service program to the total expense of all DD day services programs. All costs in this program are administrative.
- DD Program Administration. This program is responsible for the oversight of DD services including; inpatient, clinical, supports coordination/case management, residential, and day services. This cost is allocated to all DD Programs prior to allocating costs to funding streams. Allocation of this cost to programs is based upon the total expense of each DD program to the total expense of all DD programs. All costs in this program are administrative.
- Community Consultation and Treatment (CC&T) Program Administration. This program is responsible for the oversight of MI Adult and MI Child services including child state and community inpatient, child residential services, home based services to children, case management services to children, clinical outpatient services to both MI Adults and MI Children, psychiatric service coordination and emergency service coordination. This cost is allocated to all CC&T programs prior to allocating costs to funding streams. Allocation of this cost to

North Country Community Mental Health, Program Descriptions and Allocated Costing Methods

programs is based upon the total expense of each CC & T program to the total expense of all CC&T programs. All costs in this program are administrative.

- Community Support (CS) Program Administration. This program is responsible for the oversight of MIA services including MIA state inpatient and community inpatient, residential services, clubhouse services, case management, assertive community treatment, older adult services and hospital liaison. This cost is allocated to all CS programs prior to allocating costs to funding streams. Allocation of this cost to programs is based upon the total expense of each CS program to the total expense of all CS programs. All costs in this program are administrative.
- Hospital Liaison. This person manages state and community hospital utilization. This person reports no direct services. All costs in this program are administrative.
- Psychiatric Administration. The Medical Director is charged 30% to administrative services allocated via time study.
- Prevention Indirect/Homeless Grant. This program provides collaborative services with other coordinating agencies. All costs in this program are administrative.
- Board Administration. This program provides coordination and oversight of all agency functions including; board activities, public relations, and recipient rights. A subset of Board Administration is Administrative Services, which oversees human resources, safety, contract management, and data systems. Another subset of Board Administration is Finance which is responsible for budgeting, audit, internal controls, general ledger maintenance, accounts payable, accounts receivable including reimbursement, payroll, fixed assets, and financial risk. Both the Finance Department and Human Resources provide services to both the Affiliation and Provider side of the North Country Community Mental Health. Services provided by Human Resources are allocated to the Affiliation and Provider based on number of employees in each department. Services provided by Finance are allocated in the following manner:
 - Accounts Payable Accountant: based on a one-month study of the number of invoices paid for Affiliation and Provider services.
 - Payroll: based on number of employees in each department.
 - Accounting Supervisor: based on FTE levels of staff supervised in each department.
 - Finance Director: based on FTE levels of staff supervised in each department.

Northern Affiliation.

Inpatient Programs

- Community Inpatient Services. The Northern Affiliation adjudicates all inpatient claims. Finance staff at the Affiliation level pays Medicaid claims. General Fund, MI Child, Adult Benefit Waiver, and indigent claims are forward to each contract board provider for payment. All cost of inpatient claims paid is a direct service. The cost of the employees adjudicating and paying the claims is administrative services.

Administrative Services

- Improving Practices Leadership Team. This coordinating grant is charged to administrative services.
- Affiliation MCO Administration. This includes Access, Inpatient Claims, Information Services, Finance, Human Resources, Member Services, Compliance, and Provider Network Management. Finance and Human Resources costs are allocated as mentioned above. Most Affiliation MCO Administration is charged to Medicaid, with the exception of some Access charges, inpatient claims adjudication, and standards setting dues. General Fund, Adult Benefit Waiver, MI Child, and indigent portions of these costs are billed back to the Contract Boards. The budgeted amount of these non-Medicaid costs is \$91,682 for Ausable Valley and Northeast Michigan Community Mental Health. The non-Medicaid portion for North Country Community Mental Health is \$102,508.

Prime Subcontractors

- The Northern Affiliation's prime subcontractors are Northeast Michigan Community Mental Health, Ausable Valley Community Mental Health, and Northern Michigan Substance Abuse Services. The Northern Affiliation also contracts with various community hospitals to provide inpatient services.

Other

- QAAP tax. This assessment is passed on to DCH.

North Country Community Mental Health Budgeted Expense and Revenue Classification By Line Item (Various expenditure and revenue accounts are rolled up into these classifications.)										
	Salaries & Wages	Fringe Benefits	MIA Contractual	MIC Contractual	DD Contractual	Contract Community Inpatient	Other Contract	Contract-Imaging	Supplies	Pharmacy/Injectables
Provider Operations										
Direct Services										
Inpatient Programs										
MIA State Inpatient (93050)			739,600							
Hospital Transportation (93150)						67,000				
MIA Community Inpatient Indigent (93151)						430,000				
MIC State Inpatient (94050)				29,592						
Subtotal-Community Inpatient	-	-	739,600	29,592	-	497,000	-	-	-	-
Residential Services										
DD Residential Services										
Arborlight (81520)					315,038					
Maple (81521)					202,967					
Monroe (81522)					285,387					
Rivershore (81523)					331,880					
Westwood (81524)					310,033					
Clearwater (81525)					339,135					
North Birch (81526)					341,327					
North Limits (81527)					365,746					
Bell (81529)					23,880					1,200
Beacon Services (81530)					236,155					225
GT Comm Lvg (81531)					37,258					
Lighthouse (81532)					186,978					
Elder 1 SIP (81618)					115,176					
Elder III SIP (81619)					99,528					
Kresnak (81620)					242,455					
Residential-Type A (91450)					852,050					8,400
Charlevoix House (91451)					72,483					
Pinehaven Red (91453)					277,280					
Pinehaven Green (91454)					279,870					
White Pines (91455)					283,818					
Brackenwood (91456)					278,655					
Harrison (91458)					307,237					
Cleveland (91459)					306,444					200
Clarke Street (91463)					200,174					600
Bay Woods (91466)					351,340					750
Bay Springs (91468)					281,146					700
Candlewood (91501)					305,361					
Springridge (91502)					298,380					
Autumnview (91503)					329,610					
Winterlake (91504)					301,226					
DD Self Determination (91610)					737,524					
SIP Hourly (91612)					780,763					
Meecher (91613)					140,641					
West Street (91615)					142,199					700
Roger's Home (Meecher II) (91617)					186,367					
Mapleleaf (91621)					19,643					
Wetzel Lake (91622)					152,125					
DD Respite Care (91701)	50,161	26,429			114,788				1,372	
MIA Residential Services										
MIA Residential (93450)			927,153							
MIA Residential-OBRA (93452)			16,899							
Supportive Housing (93610)	75,494	21,892							100	
Supportive Housing Block (93611)	5,000	383							1,850	
Supportive Housing Bridge (93612)	5,000	683							500	
Housing Assistance Grant (93620)									100	
MIA Crisis/Respite Res (93458)	391,709	144,691	12,000				500		37,500	3,300
MIC Residential Services										
MIC Residential (94450)				235,500						
MIC Respite (94701)	7,880	609		33,458					-	
Subtotal-Residential Services	535,244	194,687	956,052	268,958	10,432,067	-	500	-	41,422	16,075
Skill Building & Day Support Services										
DD Skill Building & Day Support Services										
Grand Traverse Industries (81345)					429,175					
Bergmann Center (91342)					523,349					
Crossroads Industries (91343)					584,824					
Straits Area Services (91344)					688,607					
Other Contract Day Services (91353)	17,535	1,341			70,341				-	
DD Day Prgm (91354/91356)	498,064	179,064							18,233	
Day Services Alternatives/Supp Employment (91365)					250,000					
MIA Skill Building & Day Support Services										
PSR Clubhouse-South (83345)	183,304	81,862	300				400		19,212	
PSR Clubhouse-North (93345)	245,356	64,679	7,400						34,950	
Beacon Center Peer Directed (93347)			114,818							
Supported Employment (93370)	36,630	10,482								
Subtotal-Skill Building & Day Support Services	980,889	337,428	122,518	-	2,546,296	-	400	-	72,395	-
Clinical Services, Including Home Based Services										
DD Clinical Services (91241/91251)	453,526	180,636	-	-	106,072	-	2,500	3,500	15,903	-
MIA/MIC Outpatient Services (93241/93261/93274/93630)	1,814,896	666,260	11,300	-	-	-	7,000	28,300	46,535	93,500
Psychiatric Services (93270)	230,505	56,810	290,257						3,110	
Home Based Services (NFS) (94573)				385,792						
Subtotal Clinical Services, Including Home Based	2,498,927	903,706	301,557	385,792	106,072	-	9,500	31,800	65,548	93,500
Support Services										
DD Supports Coor (91280)	718,357	285,270			12,200		500	5,000	18,093	
MIA Case Management (93280)	445,399	172,840	22,575				5,000	2,500	12,619	15,800
Assertive Community Treatment-South (83290)	222,173	90,023	1,300				-	1,200	3,718	50,150
Assertive Community Treatment-North (93290)	273,466	103,718	353					1,600	3,611	48,200
MIC Case Management (94280/94281)	126,675	40,183							4,059	
Subtotal-Support Services	1,786,070	692,034	24,228	-	12,200	-	5,500	10,300	42,100	114,150
Other Support Services										
Other Support Services-DD										
DD RICC (91285)							100		1,144	
DD RICC (91286)							600		1,344	
DD Child Waiver (84800)					300					

North Country Community Mental Health						
Budgeted Expense and Revenue Classification By Line Item						
(Various expenditure and revenue accounts are rolled up into these classifications.)						
	Medicaid	GF and Carry Forward	MI Child	ABW	All Other	Total
Provider Operations						
Direct Services						
Inpatient Programs						
MIA State Inpatient (93050)		609,600			130,000	739,600
Hospital Transportation (93150)		60,300			6,700	67,000
MIA Community Inpatient Indigent (93151)		342,000		50,000	38,000	430,000
MIC State Inpatient (94050)		25,208			4,384	29,592
Subtotal-Community Inpatient	-	1,037,108	-	50,000	179,084	1,266,192
Residential Services						
DD Residential Services						
Arborlight (81520)	334,175	4,301			1,599	340,075
Maple (81521)	204,467	4,500				208,967
Monroe (81522)	290,987				2,800	293,787
Rivershore (81523)	342,800	7,026			2,250	352,076
Westwood (81524)	325,570	9,759				335,329
Clearwater (81525)	361,658	4,877			1,100	367,635
North Birch (81526)	274,236	15,891			73,200	363,327
North Limits (81527)	316,951	60,795				377,746
Bell (81529)	23,880	1,200				25,080
Beacon Services (81530)	192,325	44,055				236,380
GT Comm Lvg (81531)	37,258					37,258
Lighthouse (81532)	86,365	100,613				186,978
Elder 1 SIP (81618)	113,892	1,284				115,176
Elder III SIP (81619)	99,432	96				99,528
Kresnak (81620)	210,510	26,745			20,800	258,055
Residential-Type A (91450)	770,930	72,781			16,739	860,450
Charlevoix House (91451)	72,483					72,483
Pinehaven Red (91453)	281,880				2,600	284,480
Pinehaven Green (91454)	284,117	2,953				287,070
White Pines (91455)	298,168				1,300	299,468
Brackenwood (91456)	296,110	1,245				297,355
Harrison (91458)	315,204	2,033			10,800	328,037
Cleveland (91459)	320,044				3,800	323,844
Clarke Street (91463)	207,539	1,785			500	209,824
Bay Woods (91466)	368,035	9,104			200	377,339
Bay Springs (91468)	276,900	21,946				298,846
Candlewood (91501)	310,361	1,200				311,561
Springridge (91502)	302,125	3,052				305,177
Autumnview (91503)	341,794	5,816				347,610
Winterlake (91504)	316,961	2,965			400	320,326
DD Self Determination (91610)	733,824	-			3,700	737,524
SIP Hourly (91612)	780,763					780,763
Meecher (91613)	137,117	3,524				140,641
West Street (91615)	129,399	13,500				142,899
Roger's Home (Meecher II) (91617)	186,367					186,367
Mapleleaf (91621)	19,643					19,643
Wetzel Lake (91622)	149,625	2,500				152,125
DD Respite Care (91701)		210,235			-	210,235
MIA Residential Services						
MIA Residential (93450)	776,855	97,298		53,000		927,153
MIA Residential-OBRA (93452)	14,959	1,690			250	16,899
Supportive Housing (93610)	73,134	25,180		6,000	2,798	107,112
Supportive Housing Block (93611)					33,809	33,809
Supportive Housing Bridge (93612)		15,375			9,500	24,875
Housing Assistance Grant (93620)					6,300	6,300
MIA Crisis/Respite Res (93458)	326,544	295,530		53,000	8,700	683,774
MIC Residential Services						
MIC Residential (94450)	15,500	220,000				235,500
MIC Respite (94701)		42,297				42,297
Subtotal-Residential Services	11,320,887	1,333,151	-	112,000	203,145	12,969,183
Skill Building & Day Support Services						
DD Skill Building & Day Support Services						
Grand Traverse Industries (81345)	407,849	16,493			4,833	429,175
Bergmann Center (91342)	499,327	21,620			2,402	523,349
Crossroads Industries (91343)	562,016	20,527			2,281	584,824
Straits Area Services (91344)	653,901	31,235			3,471	688,607
Other Contract Day Services (91353)	99,874					99,874
DD Day Prgm (91354/91356)	852,657				1,000	853,657
Day Services Alternatives/Supp Employment (91365)	247,500	2,250			250	250,000
MIA Skill Building & Day Support Services						
PSR Clubhouse-South (83345)	289,030	59,332		1,300	13,592	363,254
PSR Clubhouse-North (93345)	346,433	121,434		25,000	23,343	516,210
Beacon Center Peer Directed (93347)	94,610	18,187			2,021	114,818
Supported Employment (93370)	27,272	28,558		6,000	3,174	65,004
Subtotal-Skill Building & Day Support Services	4,080,469	319,636	-	32,300	56,367	4,488,772
Clinical Services, Including Home Based Services						
DD Clinical Services (91241/91251)						
DD Clinical Services (91241/91251)	848,209	51,089	448	-	11,655	911,401
MIA/MIC Outpatient Services (93241/93261/93274/93630)	1,282,709	1,325,335	23,000	127,000	269,837	3,027,881
Psychiatric Services (93270)	258,585	301,992	2,701	26,107	44,765	634,150
Home Based Services (NFIS) (94573)	345,659	33,133	7,000			385,792
Subtotal Clinical Services, Including Home Based	2,735,162	1,711,549	33,149	153,107	326,257	4,959,224
Support Services						
DD Supports Coor (91280)						
DD Supports Coor (91280)	1,177,918	79,926	300		12,567	1,270,711
MIA Case Management (93280)	497,533	252,596		15,000	46,167	811,296
Assertive Community Treatment-South (83290)	253,742	114,321		13,300	62,704	444,067
Assertive Community Treatment-North (93290)	366,709	87,732		5,000	50,548	509,989
MIC Case Management (94280/94281)	203,079	4,925			547	208,551
Subtotal-Support Services	2,498,981	539,500	300	33,300	172,533	3,244,614
Other Support Services						
Other Support Services-DD						
DD RICC (91285)					5,844	5,844
DD RICC (91286)					5,844	5,844
DD Child Waiver (84800)					300	300

North Country Community Mental Health						
Budgeted Expense and Revenue Classification By Line Item						
(Various expenditure and revenue accounts are rolled up into these classifications.)						
	Medicaid	GF and Carry Forward	MI Child	ABW	All Other	Total
Other Support Services-MIA						
Older Adult Services (95825/95921/95923)	74,625	29,981			76,731	181,337
Alzheimers Grant (95851)					80,600	80,600
Other Support Services-MIC						
Wrap Around (94801)		18,427			9,047	27,474
PMTO (95830)		26,550			2,950	29,500
Decisions to Actions (96000/96001)		67,473			78,924	146,397
Subtotal Other Support Services	74,625	142,431	-	-	260,240	477,296
Total-Direct Provider Services	20,710,124	5,083,375	33,449	380,707	1,197,626	27,405,281
Percentage-Medicaid Provider	75.57%					100.00%
Percentage-All Other Provider	24.43%					
Administrative Services						
DD Day Prgm (91354/91356)-Administration	74,327					74,327
DD Program Administration (91210/91353)	293,868	19,281			2,142	315,291
MIA/MIC Community Consultation & Treatment Program Admin	83,536	88,328			9,814	181,678
MIA Community Support Services Program Admin	78,979	37,423			4,158	120,560
Hospital Liaison (93160)	56,176	33,705		2,000	3,745	95,626
Psychiatric Administration-Medical Director (93270)	28,653	33,463	299	2,893	4,961	70,269
Prevention Indirect (95821)		42,408			4,712	47,120
Homeless Grant-Administrative (95840)					5,337	5,337
Board Administration (95021)	1,666,630	363,823	4,269		75,011	2,109,733
Subtotal-Administrative	2,282,169	618,431	4,568	4,893	109,880	3,019,941
Percentage-Medicaid Provider	75.57%					
Percentage-All Other Provider	24.43%					
Subtotal-Provider Operations	22,992,293	5,701,806	38,017	385,600	1,307,506	30,425,222
Local Contribution to State Medicaid					431,035	431,035
Total-All Provider	22,992,293	5,701,806	38,017	385,600	1,738,541	30,856,257
Medicaid Direct-Provider	20,710,124					
Medicaid Indirect-Provider	2,282,169					
Non Medicaid Direct-Provider	6,695,157					
Non Medicaid Indirect-Provider	737,772					
Local Contribution to State Medicaid	431,035					
Total of Above	30,856,257					
Northern Affiliation (MCO)						
Inpatient Programs						
Community Inpatient-Medicaid	1,454,851					1,454,851
Subtotal-Inpatient Programs	1,454,851	-	-	-	-	1,454,851
Contract Boards And Agencies						
Ausable Valley Community Mental Health	8,966,163					8,966,163
NE Michigan Community Mental Health	17,773,360					17,773,360
Substance Abuse Services	691,699					691,699
Subtotal-Contract Boards and Agencies	27,431,222					27,431,222
Administrative						
Improving Practices Leadership Team Grant					71,157	71,157
Affiliation-MCO Administration	1,372,097	70,067	2,344	6,702	115,077	1,566,287
Access Center/Inpatient Claims for Northeast and AV CMH*					(91,682)	(91,682)
Subtotal-Administrative	1,372,097	70,067	2,344	6,702	94,552	1,545,762
*The charges are paid by the Affiliates for GF/ABW/MI portion						
Other						
QAAP Tax	3,341,131					3,341,131
Total-Northern Affiliation (MCO)	33,599,301	70,067	2,344	6,702	94,552	33,772,966
Medicaid Direct-Northern Affiliation (MCO)	28,886,073					
Medicaid Indirect-Northern Affiliation (MCO)	1,372,097					
Non Medicaid Direct-Northern Affiliation (MCO)						
Non Medicaid Indirect-Northern Affiliation (MCO)	173,665					
Medicaid-QAAP Tax	3,341,131					
Total Above	33,772,966					
Total-All	56,591,594	5,771,873	40,361	392,302	1,833,093	64,629,223
Medicaid Direct-All	49,596,197					
Medicaid Indirect-All	3,654,266					
Non Medicaid Direct-All	6,695,157					
Non Medicaid Indirect-All	911,437					
Non-Medicaid-Local Contribution to State Medicaid	431,035					
Medicaid-QAAP Tax	3,341,131					
Total Above	64,629,223					64,629,223
						-

North Country Community Mental Health Supply Allocation

Supplies include office, postage, and various operating supplies, including forms, letterhead, magazines & periodicals, food and maintenance supply. North Country Community Mental Health has several sites located throughout the six county service area. If only one reporting unit is located at the site, supplies are charged directly to the reporting unit. Otherwise, these costs are allocated to various reporting units on the basis of FTE's located within the site. Where possible, we also identify direct purchases of supplies via information on the purchase requisitions that are requested by the reporting units.

The following pages give a detail breakdown on how supplies are allocated at each program site to reporting units.

**North Country Community Mental Health
Supplies Allocation Schedule**

Reporting Unit	Program Code	Location	Number of FTE	Percent Of Total	Annual Supplies	Allocated	Allocated	Direct
MIA/MIC Outpatient	93241/93261/93274	Cheboygan	4.95	52.66%	\$ 8,000	\$ 4,213		
Psychiatric Services	93270	Cheboygan	0.51	5.43%	\$ 8,000	\$ 434		
MIA Case Management	93280	Cheboygan	2.54	27.02%	\$ 8,000	\$ 2,162		
Crisis Residential (nurse on call)	93458	Cheboygan	0.13	1.38%	\$ 8,000	\$ 111		
MIC Case Management	94280/94281	Cheboygan	1.27	13.51%	\$ 8,000	\$ 1,081		
			9.40	100.00%			\$ 8,000	
MIA/MIC Outpatient	93241/93261/93274	Lockwood	10.61	23.47%	\$ 60,000	\$ 14,084		
Psychiatric Services	93270	Lockwood	0.56	1.24%	\$ 60,000	\$ 744		
MIA Case Management	93280	Lockwood	3.62	8.01%	\$ 60,000	\$ 4,809		
Crisis Residential (nurse on call)	93458	Lockwood	0.86	1.89%	\$ 60,000	\$ 1,136		
MIC Case Management	94280/94281	Lockwood	1.29	2.86%	\$ 60,000	\$ 1,714		
Board Administration	95021	Lockwood	19.39	42.91%	\$ 60,000	\$ 25,747		
Northern Affiliation (MCO Admin)	66661	Lockwood	2.61	5.76%	\$ 60,000	\$ 3,458		
DD Clinical	91241	Lockwood	0.00	0.00%	\$ 60,000	\$ 2		
Hospital Liaison	93160	Lockwood	1.22	2.70%	\$ 60,000	\$ 1,622		
Program Admin-CSS-MI	93211	Lockwood	1.22	2.70%	\$ 60,000	\$ 1,622		
Wrap Around	94801	Lockwood	1.29	2.86%	\$ 60,000	\$ 1,714		
Prevention Indirect	95821	Lockwood	0.07	0.14%	\$ 60,000	\$ 86		
Older Adult Services	95825/95921	Lockwood	2.46	5.44%	\$ 60,000	\$ 3,261		
Affiliation	66661	Lockwood						
			45.20	100.00%			\$ 60,000	
MIA/MIC Outpatient	93241/93261/93274	Charlevoix	6.19	59.53%	\$ 10,000	\$ 5,953		
Psychiatric Services	93270	Charlevoix	0.50	4.76%	\$ 10,000	\$ 476		
MIA Case Management	93280	Charlevoix	1.24	11.90%	\$ 10,000	\$ 1,190		
Program Admin-CC&T	93210	Charlevoix	1.24	11.90%	\$ 10,000	\$ 1,190		
Decisions to Actions	96000	Charlevoix	1.24	11.90%	\$ 10,000	\$ 1,190		
			10.40	100.00%			\$ 10,000	
Psychiatric Services	93270	Otsego-DD	0.42	1.54%	\$ 25,000	\$ 385		
DD Program Administration	91210	Otsego-DD	2.39	8.76%	\$ 25,000	\$ 2,191		
DD Clinical	91241/91251	Otsego-DD	9.12	33.45%	\$ 25,000	\$ 8,363		
DD Case Management	91280	Otsego-DD	13.73	50.39%	\$ 25,000	\$ 12,597		
DD Day Program-Admin	91354/91356	Otsego-DD	1.00	3.67%	\$ 25,000	\$ 917		
DD Respite Care	91701	Otsego-DD	0.60	2.19%	\$ 25,000	\$ 548		
			27.26	100.00%			\$ 25,000	
MIA/MIC Outpatient	93241/93261/93274	Otsego Outpatient	6.66	83.32%	\$ 7,000	\$ 5,832		
Psychiatric Services	93270	Otsego Outpatient	0.00	0.00%	\$ 7,000	\$ -		
MIA Case Management	93280	Otsego Outpatient	1.33	16.68%	\$ 7,000	\$ 1,168		
			7.99	100.00%			\$ 7,000	
MIA/MIC Outpatient	93241/93261/93274	Bellaire	4.35	20.51%	\$ 20,000	\$ 4,102		
Psychiatric Services	93270	Bellaire	0.47	2.21%	\$ 20,000	\$ 441		
MIC Case Management	94280/94281	Bellaire	1.34	6.32%	\$ 20,000	\$ 1,264		
Board Administration	95021	Bellaire	4.00	18.84%	\$ 20,000	\$ 3,768		
DD Program Administration	91210	Bellaire	1.34	6.32%	\$ 20,000	\$ 1,264		
DD Clinical	91241/91251	Bellaire	3.01	14.20%	\$ 20,000	\$ 2,839		
DD Case Management	91280	Bellaire	5.83	27.48%	\$ 20,000	\$ 5,497		
DD Respite Care	91701	Bellaire	0.88	4.12%	\$ 20,000	\$ 824		
			21.23	100.00%			\$ 20,000	
MIA/MIC Outpatient	93241/93261/93274	Kalkaska	5.17	80.73%	\$ 7,000	\$ 5,651		
Psychiatric Services	93270	Kalkaska	0.50	7.74%	\$ 7,000	\$ 542		
Program Admin-CC&T	93210	Kalkaska	0.74	11.53%	\$ 7,000	\$ 807		
			6.40	100.00%			\$ 7,000	

**North Country Community Mental Health
Supply Allocations to Programs**

	Cheboygan	Lockwood	Charlevoix	Otsego	Bellaire	Kalkaska	Rapid City	Direct	Total	
MIA/MIC Outpatient	93241/93261/93274	\$ 4,213	\$ 14,084	\$ 5,953	\$ 5,832	\$ 4,102	\$ 5,651	\$ 6,700	\$ 46,535	
Psychiatric Services	93270	\$ 434	\$ 744	\$ 476	\$ 385	\$ 441	\$ 542	\$ 1,000	\$ 4,034	
MIA Case Management	93280	\$ 2,162	\$ 4,809	\$ 1,190	\$ 1,168		\$ 1,291	\$ 2,000	\$ 12,619	
Assertive Community Trx-South	83290						\$ 1,718	\$ 2,000	\$ 3,718	
Assertive Community Trx-North	93290							\$ 3,611	\$ 3,611	
PSR Clubhouse-South	83345						\$ 1,979	\$ 17,233	\$ 19,212	
PSR Clubhouse-North	93345							\$ 34,950	\$ 34,950	
Crisis Residential	93458	\$ 111	\$ 1,136					\$ 36,253	\$ 37,500	
MIC Case Management	94280/94281	\$ 1,081	\$ 1,714		\$ 1,264				\$ 4,059	
Board Administration	95021		\$ 25,747		\$ 3,768			\$ 69,000	\$ 98,515	
Northern Affiliation (MCO Admin)	66661		\$ 3,458					\$ 26,000	\$ 29,458	
Northern Affiliation (IPTL Grant)	66670							\$ 4,100	\$ 4,100	
DD Clinical	91241		\$ 2	\$ 8,363	\$ 2,839			\$ 4,700	\$ 15,903	
DD Case Management	91280			\$ 12,597	\$ 5,497				\$ 18,093	
DD Respite Care	91701			\$ 548	\$ 824				\$ 1,372	
Hospital Liaison	93160		\$ 1,622						\$ 1,622	
Supportive Housing	93610							\$ 100	\$ 100	
Supportive Housing Block Grant	93611							\$ 1,850	\$ 1,850	
Supportive Housing Bridge St.	93612							\$ 500	\$ 500	
Housing Assistance Grant	93620							\$ 100	\$ 100	
Program Admin-DD	91210			\$ 2,191	\$ 1,264				\$ 3,455	
Program Admin-CC&T	93210		\$ 1,190			\$ 807			\$ 1,998	
Program Admin-CSS-MI	93211		\$ 1,622						\$ 1,622	
RICC	91285/91286							\$ 2,488	\$ 2,488	
Program Admin-DD Day Program	91354/91356			\$ 917					\$ 917	
DD Day Program	91354/91356							\$ 18,233	\$ 18,233	
Wrap Around	94801		\$ 1,714						\$ 1,714	
Prevention Indirect	95821		\$ 86					\$ 1,080	\$ 1,166	
Gatekeeper/OBRA-Active Trx	95825/95921		\$ 3,261					\$ 1,065	\$ 4,326	
PMTO	95830								\$ 650	
Decisions to Actions	96000		\$ 1,190					\$ 5,000	\$ 6,190	
		\$ 8,000	\$ 60,000	\$ 10,000	\$ 32,000	\$ 20,000	\$ 7,000	\$ 5,000	\$ 237,963	\$ 380,613
Less: Northeast/Ausable Valley GF, ABW, and MI Child portion of the Access Center, Inpatient claims adjudication for the indigent population and standard setting dues										\$ (797)
										\$ 379,816

Summary:			
<u>Residential</u>			
DD Respite Care		1,372	
Supported Housing		100	
Supported Housing Block		1,850	
Supported Housing Bridge		500	
Housing Assistance Grant		100	
Crisis Residential		37,500	\$ 41,422
<u>Skill Building & Day Support Services</u>			
DD Day Program		18,233	
PSR Clubhouse-North/South		54,162	72,395
<u>Clinical Services</u>			
DD Clinical		15,903	
MIA/MIC Outpatient		46,535	
Psychiatric		3,110	\$ 65,548
<u>Support Services</u>			
DD Supports Coordination/CSM		18,093	
MIA Casemanagement		12,619	
Assertive Comm Trx-North/South		7,329	
MIC Case Management		4,059	\$ 42,100
<u>Other Support Services</u>			
DD RICC		2,488	
Older Adult Services		4,326	
Wrap Around		1,714	
PMTO		650	
Decisions to Actions		6,190	\$ 15,369
<u>Administrative Services</u>			
Board Administration		98,515	
Program Administration-All		7,992	
Hospital Liaison		1,622	
Psychiatric Administration (see medical director breakdown)		924	
Prevention/Homeless		1,166	110,220
<u>Medicaid Managed Care Administration</u>			
Northern Affiliation		33,558	
Less: Northeast/Ausable Valley GF/ABW MI Child Portion		(797)	32,761
			\$ 379,816

North Country Community Mental Health Occupancy/Building Allocation

North Country Community Mental Health maintains 25 leases throughout the six county service area. Some leases are charged directly to reporting units if only the reporting unit benefits from the lease. Others are allocated to various reporting units on the basis of FTE's located within the leased building.

The following pages give a detail breakdown on how occupancy/building rental is allocated at each program site to reporting units.

**North Country Community Mental Health
Building Allocation Schedule**

Reporting Unit	Program Code	Location	Number of FTE	Percent Of Total	Annual Rent	Allocated	Allocated	Direct
MIA/MIC Outpatient	93241/93261/93274	Cheboygan	4.95	52.66%	\$ 26,213	\$ 13,804		
Psychiatric Services	93270	Cheboygan	0.51	5.43%	\$ 26,213	\$ 1,422		
MIA Case Management	93280	Cheboygan	2.54	27.02%	\$ 26,213	\$ 7,083		
Crisis Residential (nurse on call)	93458	Cheboygan	0.13	1.38%	\$ 26,213	\$ 363		
MIC Case Management	94280/94281	Cheboygan	1.27	13.51%	\$ 26,213	\$ 3,542		
			9.40	100.00%			\$ 26,213	
MIA/MIC Outpatient	93241/93261/93274	Lockwood	10.61	23.47%	\$ 104,118	\$ 24,440		
Psychiatric Services	93270	Lockwood	0.56	1.24%	\$ 104,118	\$ 1,291		
MIA Case Management	93280	Lockwood	3.62	8.01%	\$ 104,118	\$ 8,345		
Crisis Residential (nurse on call)	93458	Lockwood	0.86	1.89%	\$ 104,118	\$ 1,971		
MIC Case Management	94280/94281	Lockwood	1.29	2.86%	\$ 104,118	\$ 2,974		
Board Administration	95021	Lockwood	19.39	42.91%	\$ 104,118	\$ 44,679		
Northern Affiliation (MCO Admin)	66661	Lockwood	2.61	5.76%	\$ 104,118	\$ 6,001		
DD Clinical	91241	Lockwood	0.00	0.00%	\$ 104,118	\$ 3		
Hospital Liaison	93160	Lockwood	1.22	2.70%	\$ 104,118	\$ 2,816		
Program Admin-CSS-MI	93211	Lockwood	1.22	2.70%	\$ 104,118	\$ 2,816		
Wrap Around	94801	Lockwood	1.29	2.86%	\$ 104,118	\$ 2,974		
Prevention Indirect	95821	Lockwood	0.07	0.14%	\$ 104,118	\$ 150		
Older Adult Services	95825/95921	Lockwood	2.46	5.44%	\$ 104,118	\$ 5,659		
Affiliation	66661	Lockwood						\$ 41,999
			45.20	100.00%			\$ 104,118	
MIA/MIC Outpatient	93241/93261/93274	Charlevoix	6.19	59.53%	\$ 21,000	\$ 12,501		
Psychiatric Services	93270	Charlevoix	0.50	4.76%	\$ 21,000	\$ 1,000		
MIA Case Management	93280	Charlevoix	1.24	11.90%	\$ 21,000	\$ 2,500		
Program Admin-CC&T	93210	Charlevoix	1.24	11.90%	\$ 21,000	\$ 2,500		
Decisions to Actions	96000	Charlevoix	1.24	11.90%	\$ 21,000	\$ 2,500		
			10.40	100.00%			\$ 21,000	
MIA/MIC Outpatient	93241/93261/93274	Otsego	5.00	15.05%	\$ 99,200	\$ 14,926		
Psychiatric Services	93270	Otsego	0.42	1.26%	\$ 99,200	\$ 1,251		
MIA Case Management	93280	Otsego	1.00	3.01%	\$ 99,200	\$ 2,983		
DD Program Administration	91210	Otsego	2.39	7.18%	\$ 99,200	\$ 7,124		
DD Clinical	91241/91251	Otsego	9.12	27.41%	\$ 99,200	\$ 27,192		
DD Case Management	91280	Otsego	13.73	41.29%	\$ 99,200	\$ 40,960		
DD Day Program-Admin	91354/91356	Otsego	1.00	3.01%	\$ 99,200	\$ 2,983		
DD Respite Care	91701	Otsego	0.60	1.80%	\$ 99,200	\$ 1,781		
			33.26	100.00%			\$ 99,200	
MIA/MIC Outpatient	93241/93261/93274	Bellaire	4.35	20.51%	\$ 116,525	\$ 23,900		
Psychiatric Services	93270	Bellaire	0.47	2.21%	\$ 116,525	\$ 2,571		
MIC Case Management	94280/94281	Bellaire	1.34	6.32%	\$ 116,525	\$ 7,366		
Board Administration	95021	Bellaire	4.00	18.84%	\$ 116,525	\$ 21,955		
DD Program Administration	91210	Bellaire	1.34	6.32%	\$ 116,525	\$ 7,366		
DD Clinical	91241/91251	Bellaire	3.01	14.20%	\$ 116,525	\$ 16,541		
DD Case Management	91280	Bellaire	5.83	27.48%	\$ 116,525	\$ 32,024		
DD Respite Care	91701	Bellaire	0.88	4.12%	\$ 116,525	\$ 4,803		
			21.23	100.00%			\$ 116,525	
MIA/MIC Outpatient	93241/93261/93274	Kalkaska	5.17	80.73%	\$ 50,662	\$ 40,900		
Psychiatric Services	93270	Kalkaska	0.50	7.74%	\$ 50,662	\$ 3,920		
Program Admin-CC&T	93210	Kalkaska	0.74	11.53%	\$ 50,662	\$ 5,842		
			6.40	100.00%			\$ 50,662	
MIA/MIC Outpatient	93241/93261/93274	Mancelona			\$ 1,641			\$ 1,641

**North Country Community Mental Health
Building Allocations to Programs**

		Cheboygan	Lockwood	Charlevoix	Otsego	Bellaire	Kalkaska	Mancelona	Rapid City	Crisis Res	DD Day Program	Total
MIA/MIC Outpatient	93241/93261/93274	\$ 13,804	\$ 24,440	\$ 12,501	\$ 14,926	\$ 23,900	\$ 40,900	\$ 1,641				\$ 132,111
Psychiatric Services	93270	\$ 1,422	\$ 1,291	\$ 1,000	\$ 1,251	\$ 2,571	\$ 3,920		\$ 72			\$ 11,527
MIA Case Management	93280	\$ 7,083	\$ 8,345	\$ 2,500	\$ 2,983							\$ 20,910
MIA Case Management	93280								\$ 7,513			\$ 7,513
Crisis Residential	93458	\$ 363	\$ 1,971							\$ 22,666		\$ 25,000
MIC Case Management	94280	\$ 3,542	\$ 2,974			\$ 7,366						\$ 13,881
Board Administration	95021		\$ 44,679			\$ 21,955						\$ 66,634
Northern Affiliation (MCO Admin)	66661		\$ 48,000									\$ 48,000
DD Clinical	91241		\$ 3		\$ 27,192	\$ 16,541						\$ 43,736
DD Case Management	91280				\$ 40,960	\$ 32,024						\$ 72,984
DD Respite Care	91701				\$ 1,781	\$ 4,803						\$ 6,584
Hospital Liaison	93160		\$ 2,816									\$ 2,816
Program Admin-DD	91210				\$ 7,124	\$ 7,366						\$ 14,489
Program Admin-CC&T	93210			\$ 2,500			\$ 5,842					\$ 8,342
Program Admin-CSS-MI	93211		\$ 2,816									\$ 2,816
Program Admin-DD Day Program	91354/91356				\$ 2,983							\$ 2,983
DD Day Program	91354/91356											\$ 32,717
Wrap Around	94801		\$ 2,974									\$ 2,974
Prevention Indirect	95821		\$ 150									\$ 150
Older Adult Services	95825/95921		\$ 5,659									\$ 5,659
Decisions to Actions	96000			\$ 2,500								\$ 2,500
		\$ 26,213	\$ 146,117	\$ 21,000	\$ 99,200	\$ 116,525	\$ 50,662	\$ 1,641	\$ 7,586	\$ 22,666	\$ -	\$ 524,326

Total

PSR Clubhouse-South	83345	\$ 11,520										
PSR Clubhouse	93345	\$ 61,812	\$ 73,332									

ACT South	83290	\$ 10,000										
ACT North	93290	\$ 27,850	\$ 37,850									

Supportive Housing Block Grant	93611	\$ 23,000	\$ 23,000									
Housing Assistance Grant	93620	\$ 6,000	\$ 6,000									

Bridge Street	93612	\$ 5,500	\$ 5,500									
---------------	-------	----------	----------	--	--	--	--	--	--	--	--	--

DD Residential

DD Residential-Arborlight	81520	\$ 25,037										
DD Residential-Maple	81521	\$ 6,000										
DD Residential-Monroe	81522	\$ 8,400										
DD Residential-Rivershore	81523	\$ 20,196										
DD Residential-Westwood	81524	\$ 25,296										
DD Residential-Clearwater	81525	\$ 28,500										
DD Residential-North Birch	81526	\$ 22,000										
DD Residential-North Limits	81527	\$ 12,000										
DD Residential-Kresnak	81620	\$ 15,600										
DD Residential-Pinehaven Red	91453	\$ 7,200										
DD Residential-Pinehaven Green	91454	\$ 7,200										
DD Residential-White Pines	91455	\$ 15,650										
DD Residential-Brackenwood	91456	\$ 18,700										
DD Residential-Harrison	91458	\$ 20,800										
DD Residential-Cleveland	91459	\$ 17,200										
DD Residential-Clarke St.	91463	\$ 9,050										
DD Residential-Bay Woods	91466	\$ 24,600										
DD Residential-Bay Springs	91468	\$ 17,000										
DD Residential-Candlewood	91501	\$ 6,200										
DD Residential-Springridge	91502	\$ 6,200										
DD Residential-Autumnview	91503	\$ 18,000										
DD Residential-Winterlake	91504	\$ 19,100	\$ 349,929									\$ 495,611

Total-All												\$ 1,019,937
Less: Northeast/Ausable Valley GF, ABW, and MI Child portion of the Access Center, inpatient claims adjudication for the indigent population and standard setting dues												\$ (2,675)
												\$ 1,017,262

Summary:		
Residential		
All DD Residential Homes	349,929	
DD Respite Care	6,584	
Supportive Housing Block Grant	23,000	
Supportive Housing Bridge Street	5,500	
Housing Assistance Grant	6,000	
Crisis Residential	25,000	\$ 416,013
Skill Building & Day Support Services		
DD Day Program	32,717	
PSR Clubhouse-North/South	73,332	106,049
Clinical Services		
DD Clinical	43,736	
MIA/MIC Outpatient	132,111	
Psychiatric	9,530	\$ 185,378
Support Services		
DD Supports Coordination/CSM	72,984	
MIA Casemanagement	28,423	
Assertive Comm Trx-North/South	37,850	
MIC Case Management	13,881	\$ 153,139
Other Support Services		
Older Adult Services	5,659	
Wrap Around	2,974	
Decisions to Actions	2,500	\$ 11,133
Administrative Services		
Board Administration	66,634	
Program Administration-All	28,629	
Hospital Liaison	2,816	
Psychiatric Administration (see medical director breakdown)	1,997	
Prevention/Homeless	150	100,225
Medicaid Managed Care Administration		
Northern Affiliation	48,000	
Less: Northeast/Ausable Valley GF/ABW MI Child Portion)	(2,675)	45,325
		\$ 1,017,262

North Country Community Mental Health Utilities Allocation

North Country Community Mental Health has several service sites located throughout the six county service area. If only one reporting unit is located at the site, utilities are charged directly to the reporting unit. Otherwise, utilities are allocated to various reporting units on the basis of FTE's located within the site.

The following pages give a detail breakdown on how utilities are allocated at each program site to reporting units.

**North Country Community Mental Health
Utility Allocations to Programs**

		Lockwood	Charlevoix	Otsego	Mancelona	Rapid City	Crisis Res	DD Day Program	Total
MIA/MIC Outpatient	93241/93261/93274	\$ 9,312	\$ 3,334	\$ 1,896	\$ 608				\$ 15,149
Psychiatric Services	93270	\$ 492	\$ 267	\$ 159		\$ 47			\$ 964
MIA Case Management	93280	\$ 3,179	\$ 667	\$ 379					\$ 4,225
MIA Case Management	93280					\$ 4,874			\$ 4,874
Crisis Residential	93458	\$ 751					\$ 6,243		\$ 6,994
MIC Case Management	94280	\$ 1,133							\$ 1,133
Board Administration	95021	\$ 17,023							\$ 17,023
Northern Affiliation (MCO Admin)	66661	\$ 2,286							\$ 2,286
DD Clinical	91241	\$ 1		\$ 3,454					\$ 3,455
DD Case Management	91280			\$ 5,203					\$ 5,203
DD Respite Care	91701			\$ 226					\$ 226
Hospital Liaison	93160	\$ 1,073							\$ 1,073
Program Admin-DD	91210			\$ 905					\$ 905
Program Admin-CC&T	93210		\$ 667						\$ 667
Program Admin-CSS-MI	93211	\$ 1,073							\$ 1,073
Program Admin-DD Day Program	91354/91356			\$ 379					\$ 379
DD Day Program	91354/91356						\$ 6,871		\$ 6,871
Wrap Around	94801	\$ 1,133							\$ 1,133
Prevention Indirect	95821	\$ 57							\$ 57
Older Adult Services	95825/95921	\$ 2,156							\$ 2,156
Decisions to Actions	96000		\$ 667						\$ 667
		\$ 39,669	\$ 5,600	\$ 12,600	\$ 608	\$ 4,921	\$ 6,243	\$ 6,871	\$ 76,512
Total									
PSR Clubhouse-South	83345	\$ 7,473							
PSR Clubhouse	93345	\$ 11,000	\$ 18,473						
ACT South	83290	\$ 6,487							
ACT North	93290	\$ 3,300	\$ 9,787						
Housing Assistance Grant	93620	\$ 200	\$ 200						
Bridge Street	93612	\$ 6,000	\$ 6,000						\$ 34,459
Total-All									\$ 110,971
Less: Northeast/Ausable Valley GF, ABW, and MI Child portion of the Access Center, Inpatient claims adjudication for the indigent population and standard setting dues									\$ (105)
									\$ 110,866

Summary:			
<u>Residential</u>			
DD Respite Care		226	
Supportive Housing Bridge Street		6,000	
Housing Assistance Grant		200	
Crisis Residential		6,994	\$ 13,420
<u>Skill Building & Day Support Services</u>			
DD Day Program		6,871	
PSR Clubhouse-North/South		18,473	25,344
<u>Clinical Services</u>			
DD Clinical		3,455	
MIA/MIC Outpatient		15,149	
Psychiatric		781	\$ 19,385
<u>Support Services</u>			
DD Supports Coordination/CSM		5,203	
MIA Casemanagement		9,098	
Assertive Comm Trx-North/South		9,787	
MIC Case Management		1,133	\$ 25,221
<u>Other Support Services</u>			
Older Adult Services		2,156	
Wrap Around		1,133	
Decisions to Actions		667	\$ 3,956
<u>Administrative Services</u>			
Board Administration		17,023	
Program Administration-All		3,023	
Hospital Liaison		1,073	
Psychiatric Administration (see medical director breakdown)		183	
Prevention/Homeless		57	21,358
<u>Medicaid Managed Care Administration</u>			
Northern Affiliation		2,286	
Less: Northeast/Ausable Valley GF/ABW MI Child Portion)		(105)	2,181
			\$ 110,866

North Country Community Mental Health Repair & Maintenance-Building and General Allocation

Repair and Maintenance-Building includes janitorial and cleaning services, minor charges for plumbing and electrical, garbage removal, and maintenance costs of buildings and facilities provided by the landlord. North Country Community Mental Health has several service sites located throughout the six county service area. If only one reporting unit is located at the site, repair and maintenance-building is charged directly to the reporting unit. Otherwise, repair and maintenance-building costs are allocated to various reporting units on the basis of FTE's located within the site. Where possible, we also identify direct repair and maintenance-building costs via information on the purchase requisitions that are requested by the reporting units.

The following pages give a detail breakdown on how repair and maintenance-building is allocated at each program site to reporting units.

**North Country Community Mental Health
Repair & Maintenance-Building & General Allocations to Programs**

		Lockwood	Charlevoix	Cheboygan	Otsego	Mancelona	Rapid City	Crisis Res	DD Day Program	Total
MIA/MIC Outpatient	93241/93261/93274	\$ 5,952	\$ 4,117	\$ 3,456	\$ 3,370	\$ 345				\$ 17,240
Psychiatric Services	93270	\$ 247	\$ 329	\$ 354	\$ 354		\$ 82			\$ 1,367
MIA Case Management	93280	\$ 3,784	\$ 823	\$ 1,772	\$ 675					\$ 7,055
MIA Case Management	93280						\$ 1,541			\$ 1,541
Crisis Residential	93458	\$ 894		\$ 89				\$ 9,117		\$ 10,100
MIC Case Management	94280	\$ 502		\$ 886						\$ 1,388
Board Administration	95021	\$ 29,676								\$ 29,676
Northern Affiliation (MCO Admin)	66661	\$ 10,554								\$ 10,554
DD Clinical	91241	\$ 1			\$ 11,589					\$ 11,590
DD Case Management	91280				\$ 7,806					\$ 7,806
DD Respite Care	91701				\$ 504					\$ 504
Hospital Liaison	93160	\$ 1,277								\$ 1,277
Program Admin-DD	91210				\$ 2,015					\$ 2,015
Program Admin-CC&T	93210		\$ 823							\$ 823
Program Admin-CSS-MI	93211	\$ 1,277								\$ 1,277
Program Admin-DD Day Program	91354/91356				\$ 844					\$ 844
DD Day Program	91354/91356							\$ 4,780		\$ 4,780
Wrap Around	94801	\$ 502								\$ 502
Prevention Indirect	95821	\$ 25								\$ 25
Older Adult Services	95825/95921	\$ 2,567								\$ 2,567
Decisions to Actions	96000		\$ 823							\$ 823
		\$ 57,258	\$ 6,916	\$ 6,557	\$ 27,157	\$ 345	\$ 1,624	\$ 9,117	\$ 4,780	\$ 113,754
			Total							
PSR Clubhouse-South	83345	\$ 3,706								
PSR Clubhouse	93345	\$ 6,148	\$ 9,854							
ACT South	83290	\$ 1,993								
ACT North	93290	\$ 4,047	\$ 6,040							
Housing Assistance Grant	93620	\$ -	\$ -							
Bridge Street	93612	\$ 3,000	\$ 3,000							\$ 18,894
Total-All										\$ 132,648
Less: Northeast/Ausable Valley GF, ABW, and MI Child portion of the Access Center, Inpatient claims adjudication for the indigent population and standard setting dues										\$ (466)
										\$ 132,182

Summary:			
<u>Residential</u>			
DD Respite Care		504	
Supportive Housing Bridge Street		3,000	
Crisis Residential		10,100	\$ 13,604
<u>Skill Building & Day Support Services</u>			
DD Day Program		4,780	
PSR Clubhouse-North/South		9,854	14,634
<u>Clinical Services</u>			
DD Clinical		11,590	
MIA/MIC Outpatient		17,240	
Psychiatric		1,117	\$ 29,947
<u>Support Services</u>			
DD Supports Coordination/CSM		7,806	
MIA Casemanagement		8,596	
Assertive Comm Trx-North/South		6,040	
MIC Case Management		1,388	\$ 23,830
<u>Other Support Services</u>			
Older Adult Services		2,567	
Wrap Around		502	
Decisions to Actions		823	\$ 3,892
<u>Administrative Services</u>			
Board Administration		29,676	
Program Administration-All		4,959	
Hospital Liaison		1,277	
Psychiatric Administration (see medical director breakdown)		250	
Prevention/Homeless		25	36,188
<u>Medicaid Managed Care Administration</u>			
Northern Affiliation		10,554	
Less: Northeast/Ausable Valley GF/ABW MI Child Portion)		(466)	10,088
			\$ 132,182

North Country Community Mental Health Repair & Maintenance-Equipment Allocation

Repair and Maintenance-Equipment includes maintenance on software and computer equipment. Also included are maintenance agreements of copy machines and other office equipment and repair of equipment, if not covered by maintenance agreements. North Country Community Mental Health has several service sites located throughout the six county service area. If only one reporting unit is located at the site, repair and maintenance-equipment is charged directly to the reporting unit. Otherwise, repair and maintenance-equipment costs are allocated to various reporting units on the basis of FTE's located within the site. Where possible, we also identify direct repair and maintenance-equipment costs via information on the purchase requisitions that are requested by the reporting units.

The following pages give a detail breakdown on how repair and maintenance-equipment is allocated at each program site to reporting units.

**North Country Community Mental Health
Repair & Maintenance-Equipment Allocation Schedule**

Reporting Unit	Program Code	Location	Number of FTE	Percent Of Total	Annual		Allocated	Allocated	Direct
					Repair/Maint. Equipment				
MIA/MIC Outpatient	93241/93261/93274	Data System-Agency-wide	36.522055	20.5%	\$	25,287	5,178		
Psychiatric Services	93270	Data System-Agency-wide	2.82905	1.6%	\$	25,287	401		
MIA Case Management	93280	Data System-Agency-wide	11.9306	6.7%	\$	25,287	1,691		
Crisis Residential	93458	Data System-Agency-wide	10.9836	6.2%	\$	25,287	1,557		
MIC Case Management	94280/94281	Data System-Agency-wide	3.935775	2.2%	\$	25,287	558		
Board Administration	95021	Data System-Agency-wide	23.3949	13.1%	\$	25,287	3,317		
Northern Affiliation (MCO Admin)	66661	Data System-Agency-wide	2.6051	1.5%	\$	25,287	369	\$	5,468
DD Program Administration	91210	Data System-Agency-wide	3.7304	2.1%	\$	25,287	529		
DD Clinical	91241/91251	Data System-Agency-wide	12.1321	6.8%	\$	25,287	1,720		
DD Case Management	91280	Data System-Agency-wide	19.5678	11.0%	\$	25,287	2,774		
DD Day Program Admin	91354/91356	Data System-Agency-wide	1	0.6%	\$	25,287	142		
DD Day Program	91354/91356	Data System-Agency-wide	15.875	8.9%	\$	25,287	2,251		
DD Respite Care	91701	Data System-Agency-wide	1.4722	0.8%	\$	25,287	209		
Hospital Liaison	93160	Data System-Agency-wide	1.2222	0.7%	\$	25,287	173		
Program Admin-CSS-MI	93211	Data System-Agency-wide	1.2222	0.7%	\$	25,287	173		
Program Admin-CC&T	93210	Data System-Agency-wide	1.982	1.1%	\$	25,287	281		
ACT-South	83290	Data System-Agency-wide	4.6698	2.6%	\$	25,287	662		
ACT-North	93290	Data System-Agency-wide	5	2.8%	\$	25,287	709		
PSR Clubhouse-South	83345	Data System-Agency-wide	5.3796	3.0%	\$	25,287	763		
PSR Clubhouse-North	93345	Data System-Agency-wide	4.55	2.6%	\$	25,287	645		
Supported Employment	93370	Data System-Agency-wide	1	0.6%	\$	25,287	142		
Supported Housing	93610	Data System-Agency-wide	2.45	1.4%	\$	25,287	347		
Wrap Around	94801	Data System-Agency-wide	1.158125	0.6%	\$	25,287	164		
Prevention Indirect	95821	Data System-Agency-wide	0.05	0.0%	\$	25,287	7		
Older Adult Services	95825/95921	Data System-Agency-wide	2.4567	1.4%	\$	25,287	348		
Decisions To Actions	96000	Data System-Agency-wide	1.244	0.7%	\$	25,287	176		
			178.363205					25,287	
MIA/MIC Outpatient	93241/93261/93274	Lockwood	10.61	23.47%	\$	13,226	\$ 3,105		
Psychiatric Services	93270	Lockwood	0.56	1.24%	\$	13,226	\$ 164		
MIA Case Management	93280	Lockwood	3.62	8.01%	\$	13,226	\$ 1,060		
Crisis Residential (nurse on call)	93458	Lockwood	0.86	1.89%	\$	13,226	\$ 250		
MIC Case Management	94280/94281	Lockwood	1.29	2.86%	\$	13,226	\$ 378		
Board Administration	95021	Lockwood	19.39	42.91%	\$	13,226	\$ 5,676	\$	11,409
Northern Affiliation (MCO Admin)	66661	Lockwood	2.61	5.76%	\$	13,226	\$ 762		
Hospital Liaison	93160	Lockwood	1.22	2.70%	\$	13,226	\$ 358		
Program Admin-CSS-MI	93211	Lockwood	1.22	2.70%	\$	13,226	\$ 358		
Wrap Around	94801	Lockwood	1.29	2.86%	\$	13,226	\$ 378		
Prevention Indirect	95821	Lockwood	0.07	0.14%	\$	13,226	\$ 19		
Older Adult Services Affiliation	95825/95921	Lockwood	2.46	5.44%	\$	13,226	\$ 719		
			45.20	100.00%				\$ 13,226	
MIA/MIC Outpatient	93241/93261/93274	Lockwood-1st Floor	9.036000	74.07%	\$	976	\$ 723		
Psychiatric Services	93270	Lockwood-1st Floor	0.516000	4.23%	\$	976	\$ 41		
MIC Case Management	94280/94281	Lockwood-1st Floor	1.291000	10.58%	\$	976	\$ 103		
Wrap Around	94801	Lockwood-1st Floor	1.291000	10.58%	\$	976	\$ 103		
Prevention Indirect	95821	Lockwood-1st Floor	0.065000	0.53%	\$	976	\$ 5		
			12.1990					\$ 976	
MIA/MIC Outpatient	93241/93261/93274	Charlevoix	6.19	59.53%	\$	1,995	\$ 1,188	\$	144
Psychiatric Services	93270	Charlevoix	0.50	4.76%	\$	1,995	\$ 95		
MIA Case Management	93280	Charlevoix	1.24	11.90%	\$	1,995	\$ 237		
Program Admin-CC&T	93210	Charlevoix	1.24	11.90%	\$	1,995	\$ 237		
Decisions to Actions	96000	Charlevoix	1.24	11.90%	\$	1,995	\$ 237		
			10.40	100.00%				\$ 1,995	
MIA/MIC Outpatient	93241/93261/93274	Cheboygan	4.95	52.70%	\$	1,877	\$ 989		
Psychiatric Services	93270	Cheboygan	0.51	5.40%	\$	1,877	\$ 101		
MIA Case Management	93280	Cheboygan	2.54	27.03%	\$	1,877	\$ 507		
Crisis Residential (nurse on call)	93458	Cheboygan	0.13	1.35%	\$	1,877	\$ 25		
MIC Case Management	94280/94281	Cheboygan	1.27	13.51%	\$	1,877	\$ 254		
			9.40	100.00%				\$ 1,877	
Psychiatric Services	93270	Otsego-DD	0.42	1.54%	\$	1,723	\$ 27		
DD Program Administration	91210	Otsego-DD	2.39	8.76%	\$	1,723	\$ 151		
DD Clinical	91241/91251	Otsego-DD	9.12	33.45%	\$	1,723	\$ 576	\$	60
DD Case Management	91280	Otsego-DD	13.73	50.39%	\$	1,723	\$ 868	\$	276
DD Day Program-Admin	91354/91356	Otsego-DD	1.00	3.67%	\$	1,723	\$ 63		
DD Respite Care	91701	Otsego-DD	0.60	2.19%	\$	1,723	\$ 38		
			27.26	100.00%				\$ 1,723	
MIA/MIC Outpatient	93241/93261/93274	Otsego Outpatient	6.66	83.32%	\$	2,158	\$ 1,798		

**North Country Community Mental Health
Repair & Maintenance-Equipment Allocation Schedule**

Reporting Unit	Program Code	Location	Number of FTE	Percent Of Total	Annual		Allocated	Allocated	Direct
					Repair/Maint. Equipment				
Psychiatric Services	93270	Otsego Outpatient	0.00	0.00%	\$ 2,158	\$ -			
MIA Case Management	93280	Otsego Outpatient	1.33	16.68%	\$ 2,158	\$ 360			
			7.99	100.00%			\$ 2,158		
MIA/MIC Outpatient	93241/93261/93274	Otsego	5.00	15.05%	\$ 26,428	\$ 3,976			
Psychiatric Services	93270	Otsego	0.42	1.26%	\$ 26,428	\$ 333			
MIA Case Management	93280	Otsego	1.00	3.01%	\$ 26,428	\$ 795			
DD Program Administration	91210	Otsego	2.39	7.18%	\$ 26,428	\$ 1,898			
DD Clinical	91241/91251	Otsego	9.12	27.41%	\$ 26,428	\$ 7,244			
DD Case Management	91280	Otsego	13.73	41.29%	\$ 26,428	\$ 10,912			
DD Day Program-Admin	91354/91356	Otsego	1.00	3.01%	\$ 26,428	\$ 795			
DD Respite Care	91701	Otsego	0.60	1.80%	\$ 26,428	\$ 475			
			33.26	100.00%			\$ 26,428		
MIA/MIC Outpatient	93241/93261/93274	Bellaire	4.35	20.51%	\$ 11,981	\$ 2,457			
Psychiatric Services	93270	Bellaire	0.47	2.21%	\$ 11,981	\$ 264			
MIC Case Management	94280/94281	Bellaire	1.34	6.32%	\$ 11,981	\$ 757			
Board Administration	95021	Bellaire	4.00	18.84%	\$ 11,981	\$ 2,257		\$ 281	
DD Program Administration	91210	Bellaire	1.34	6.32%	\$ 11,981	\$ 757			
DD Clinical	91241/91251	Bellaire	3.01	14.20%	\$ 11,981	\$ 1,701			
DD Case Management	91280	Bellaire	5.83	27.48%	\$ 11,981	\$ 3,293		\$ 276	
DD Respite Care	91701	Bellaire	0.88	4.12%	\$ 11,981	\$ 494			
			21.23	100.00%			\$ 11,981		
MIA/MIC Outpatient	93241/93261/93274	Kalkaska	5.17	80.73%	\$ 6,241	\$ 5,038			
Psychiatric Services	93270	Kalkaska	0.50	7.74%	\$ 6,241	\$ 483			
Program Admin-CC&T	93210	Kalkaska	0.74	11.53%	\$ 6,241	\$ 720			
			6.40	100.00%			\$ 6,241		
ACT-South	83290	Rapid City	4.67	34.36%	\$ 3,471	\$ 1,193			
PSR Clubhouse-South	83345	Rapid City	5.38	39.58%	\$ 3,471	\$ 1,374		\$ 736	
Psychiatric Services	93270	Rapid City	0.03	0.25%	\$ 3,471	\$ 9			
MIA Case Management	93280	Rapid City	3.51	25.81%	\$ 3,471	\$ 896		\$ 433	
			13.59				\$ 3,471		
PSR Clubhouse-North	93345	Petoskey			\$ 372			\$ 372	
ACT-North	93290	Petoskey			\$ 1,743			\$ 1,743	
Crisis Residential	93458	Petoskey			\$ 831			\$ 831	
Bridge Street	93612	Petoskey			\$ 282			\$ 282	
DD Day Program	91454/91456	Boyne City			\$ 1,801			\$ 1,801	
Total							\$ 95,363	\$ 24,112	
Total - All								\$ 119,475	

North Country Community Mental Health

Repair & Maintenance-Equipment Allocations to Programs

		Agency-wide	Lockwood	Charlevoix	Cheboygan	Otsego	Bellaire	Kalkaska	Rapid City	Crisis Res	DD Day Program	Total
MIA/MIC Outpatient	93241/93261/93274	\$ 5,178	\$ 3,828	\$ 1,332	\$ 989	\$ 5,774	\$ 2,457	\$ 5,038				\$ 24,596
Psychiatric Services	93270	\$ 401	\$ 205	\$ 95	\$ 101	\$ 360	\$ 264	\$ 483	\$ 9			\$ 1,919
MIA Case Management	93280	\$ 1,691	\$ 1,060	\$ 237	\$ 507	\$ 1,155			\$ 1,329			\$ 5,980
Crisis Residential	93458	\$ 1,557	\$ 250		\$ 25					\$ 831		\$ 2,664
MIC Case Management	94280/94281	\$ 558	\$ 481		\$ 254		\$ 757					\$ 2,050
Board Administration	95021	\$ 3,317	\$ 17,085				\$ 2,538					\$ 22,940
Northern Affiliation (MCO Admin)	66661	\$ 5,837	\$ 762									\$ 6,600
DD Clinical	91241/91251	\$ 1,720				\$ 7,881	\$ 1,701					\$ 11,301
DD Case Management	91280	\$ 2,774				\$ 12,056	\$ 3,569					\$ 18,399
DD Respite Care	91701	\$ 209				\$ 512	\$ 494					\$ 1,215
Hospital Liaison	93160	\$ 173	\$ 358									\$ 531
Program Admin-DD	91210	\$ 529				\$ 2,049	\$ 757					\$ 3,335
Program Admin-CC&T	93210	\$ 281		\$ 237				\$ 720				\$ 1,238
Program Admin-CSS-MI	93211	\$ 173	\$ 358									\$ 531
Program Admin-DD Day Program	91354/91356	\$ 142				\$ 858						\$ 1,000
DD Day Program	91354/91356	\$ 2,251									\$ 1,801	\$ 4,052
ACT-South	83290	\$ 662							\$ 1,193			\$ 1,855
ACT-North	93290	\$ 709										\$ 709
Clubhouse-South	83345	\$ 763							\$ 2,110			\$ 2,872
Clubhouse-North	93345	\$ 645										\$ 645
Supported Employment	93370	\$ 142										\$ 142
Supported Housing	93610	\$ 347										\$ 347
Wrap Around	94801	\$ 164	\$ 481									\$ 645
Prevention Indirect	95821	\$ 7	\$ 24									\$ 31
Older Adult Services	95825/95921	\$ 348	\$ 719									\$ 1,067
Decisions to Actions	96000	\$ 176		\$ 237								\$ 414
		\$ 30,755	\$ 25,611	\$ 2,139	\$ 1,877	\$ 30,645	\$ 12,538	\$ 6,241	\$ 4,640	\$ 831	\$ 1,801	\$ 117,078
				Total								
PSR Clubhouse	93345	\$ 372	\$ 372									
ACT North	93290	\$ 1,743	\$ 1,743									
Bridge Street	93612	\$ 282	\$ 282									\$ 2,397
Total-All												\$ 119,475

Less: Northeast/Ausable Valley GF, ABW, and MI Child portion of the Access Center, Inpatient claims adjudication for the indigent population and standard setting dues \$ (466) -506
\$ 118,969

Summary:			
<u>Residential</u>			
DD Respite Care		1,215	
Supportive Housing Bridge Street		282	
Supportive Housing		347	
Crisis Residential		2,664	\$ 4,508
<u>Skill Building & Day Support Services</u>			
DD Day Program		4,052	
PSR Clubhouse-North/South		3,890	
Supported Employment		142	8,083
<u>Clinical Services</u>			
DD Clinical		11,301	
MIA/MIC Outpatient		24,596	
Psychiatric		1,553	\$ 37,450
<u>Support Services</u>			
DD Supports Coordination/CSM		18,399	
MIA Casemanagement		5,980	
Assertive Comm Trx-North/South		4,306	
MIC Case Management		2,050	\$ 30,736
<u>Other Support Services</u>			
Older Adult Services		1,067	
Wrap Around		645	
Decisions to Actions		414	\$ 2,126
<u>Administrative Services</u>			
Board Administration		22,940	
Program Administration-All		6,104	
Hospital Liaison		531	
Psychiatric Administration (see medical director breakdown)		366	
Prevention/Homeless		31	29,972
<u>Medicaid Managed Care Administration</u>			
Northern Affiliation		6,600	
Less: Northeast/Ausable Valley GF/ABW MI Child Portion)		(506)	6,094
			\$ 118,969

North Country Community Mental Health Vehicle Maintenance Allocation

North Country Community Mental Health has several service sites located throughout the six county service area. If only one reporting unit is located at the site, vehicle maintenance is charged directly to the reporting unit. Otherwise these costs are allocated to various reporting units on the basis of mileage recorded in the vehicle logs by reporting units within the site. Where possible, we also identify direct purchases to reporting units via information on the purchase requisition.

The following pages give a detail breakdown on how vehicle maintenance is allocated at each program site to reporting units.

**North Country Community Mental Health
Vehicle Maintenance Allocation Schedule**

Reporting Unit	Program Code	Location	Annual Miles Per Vehicle Log	Percent Of Total	Annual Repair/Maint. Vehicle	Allocated	Allocated	Direct
MIA/MIC Outpatient	93241/93261/93274	Lockwood	1,892	2.55%	\$ 12,000	\$ 306		
Psychiatric Services	93270	Lockwood	4	0.01%	\$ 12,000	\$ 1		
MIA Case Management	93280	Lockwood	18,700	25.18%	\$ 12,000	\$ 3,022		
Crisis Residential (nurse on call)	93458	Lockwood	1,132	1.52%	\$ 12,000	\$ 183		
MIC Case Management	94280/94281	Lockwood	258	0.35%	\$ 12,000	\$ 42		
Board Administration	95021	Lockwood	13,816	18.60%	\$ 12,000	\$ 2,232	\$	3,000
Northern Affiliation (MCO Admin)	66661	Lockwood	7,776	10.47%	\$ 12,000	\$ 1,256		
Hospital Liaison	93160	Lockwood	406	0.55%	\$ 12,000	\$ 66	\$	3,000
Program Admin-CSS-MI	93211	Lockwood	7,386	9.95%	\$ 12,000	\$ 1,193		
DD Clinical	91241/91251	Lockwood	378	0.51%	\$ 12,000	\$ 61		
DD Case Management	91280	Lockwood	11,498	15.48%	\$ 12,000	\$ 1,858		
ACT-North	93290	Lockwood	848	1.14%	\$ 12,000	\$ 137		
Supported Employment	93370	Lockwood	4,218	5.68%	\$ 12,000	\$ 682		
Prevention	95821	Lockwood	142	0.19%	\$ 12,000	\$ 23		
Older Adult Services	95825/95921	Lockwood	5,810	7.82%	\$ 12,000	\$ 939		
			74,264	100.00%			\$ 12,000	
MIA/MIC Outpatient	93241/93261/93274	Charlevoix	127	0.89%	\$ 2,000	\$ 18		
DD Clinical	91241/91251	Charlevoix	293	2.06%	\$ 2,000	\$ 41		
DD Case Management	91280	Charlevoix	197	1.39%	\$ 2,000	\$ 28		
MIA Case Management	93280	Charlevoix	13,579	95.65%	\$ 2,000	\$ 1,913		
			14,196	100.00%			\$ 2,000	
MIA/MIC Outpatient	93241/93261/93274	Cheboygan	718	4.82%	\$ 2,500	\$ 120		
Psychiatric Services	93270	Cheboygan	3	0.02%	\$ 2,500	\$ 1		
MIA Case Management	93280	Cheboygan	13,779	92.46%	\$ 2,500	\$ 2,312		
Crisis Residential (nurse on call)	93458	Cheboygan	63	0.42%	\$ 2,500	\$ 11		
MIC Case Management	94280/94281	Cheboygan	17	0.11%	\$ 2,500	\$ 3		
Decisions to Actions	96001	Cheboygan	322	2.16%	\$ 2,500	\$ 54		
			14,902	100.00%			\$ 2,500	
MIA/MIC Outpatient	93241/93261/93274	Otsego	1,564	1.93%	\$ 13,000	\$ 250		
Psychiatric Services	93270	Otsego	8	0.01%	\$ 13,000	\$ 1		
MIA Case Management	93280	Otsego	762	0.94%	\$ 13,000	\$ 122		
Board Administration	95021	Otsego	22	0.03%	\$ 13,000	\$ 4		
DD Program Administration	91210	Otsego	4,542	5.59%	\$ 13,000	\$ 727		
DD Clinical	91241/91251	Otsego	15,638	19.25%	\$ 13,000	\$ 2,503		
DD Case Management	91280	Otsego	55,022	67.75%	\$ 13,000	\$ 8,807		
DD Day Program	91354/91356	Otsego	1,440	1.77%	\$ 13,000	\$ 230		
DD Respite Care	91701	Otsego	2,220	2.73%	\$ 13,000	\$ 355		
			81,218	100.00%			\$ 13,000	
MIA/MIC Outpatient	93241/93261/93274	DD Day Program	167	0.24%	\$ 11,500	\$ 28		
Psychiatric Services	93270	DD Day Program	8	0.01%	\$ 11,500	\$ 1		
WDW/GAW	91354/91356	DD Day Program	67,318	97.91%	\$ 11,500	\$ 11,259		
DD Case Management	91280	DD Day Program	1,217	1.77%	\$ 11,500	\$ 204		
MIA Case Management	93280	DD Day Program	33	0.05%	\$ 11,500	\$ 6		
Board Administration	95021	DD Day Program	13	0.02%	\$ 11,500	\$ 2		
			68,756	100.00%			\$ 11,500	
MIA/MIC Outpatient	93241/93261/93274	Bellaire	6,700	10.71%	\$ 14,000	\$ 1,499		
MIA Case Management	93280	Bellaire	12,329	19.71%	\$ 14,000	\$ 2,759		
Psychiatric Services	93270	Bellaire	7	0.01%	\$ 14,000	\$ 2		
MIC Case Management	94280/94281	Bellaire	7,636	12.21%	\$ 14,000	\$ 1,709		
Board Administration	95021	Bellaire	17,119	27.37%	\$ 14,000	\$ 3,831		
DD Program Administration	91210	Bellaire	8,435	13.48%	\$ 14,000	\$ 1,888		
DD Clinical	91241/91251	Bellaire	4,161	6.65%	\$ 14,000	\$ 931		
DD Case Management	91280	Bellaire	4,529	7.24%	\$ 14,000	\$ 1,014		
DD Respite Care	91701	Bellaire	1,475	2.36%	\$ 14,000	\$ 330		
DD Day Program	91353	Bellaire	164	0.26%	\$ 14,000	\$ 37		
			62,555	100.00%			\$ 14,000	

**North Country Community Mental Health
Vehicle Maintenance Allocations to Programs**

		Lockwood	Charlevoix	Cheboygan	Otsego	DD Day Program	Bellaire	Rapid City	Petoskey	Direct Services	Total
MIA/MIC Outpatient	93241/93261/93274	\$ 306	\$ 18	\$ 120	\$ 250	\$ 28	\$ 1,499				\$ 2,222
Psychiatric Services	93270	\$ 1		\$ 1	\$ 1	\$ 1	\$ 2				\$ 5
MIA Case Management	93280	\$ 3,022	\$ 1,913	\$ 2,312	\$ 122	\$ 6	\$ 2,759	\$ 4,304			\$ 14,437
Crisis Residential	93458	\$ 183		\$ 11						\$ 6,000	\$ 6,193
MIC Case Management	94280/94281	\$ 42		\$ 3			\$ 1,709				\$ 1,754
Board Administration	95021	\$ 2,232			\$ 4	\$ 2	\$ 3,831			\$ 3,000	\$ 9,069
Northern Affiliation (MCO Admin)	66661	\$ 1,256									\$ 1,256
DD Clinical	91241/91251	\$ 61	\$ 41		\$ 2,503		\$ 931				\$ 3,537
DD Case Management	91280	\$ 1,858	\$ 28		\$ 8,807	\$ 204	\$ 1,014				\$ 11,910
DD Respite Care	91701				\$ 355		\$ 330				\$ 685
Hospital Liaison	93160	\$ 66								\$ 3,000	\$ 3,066
Program Admin-DD	91210				\$ 727		\$ 1,888				\$ 2,615
Program Admin-CC&T	93210										\$ -
Program Admin-CSS-MI	93211	\$ 1,193									\$ 1,193
Program Admin-DD Day Program	91354/91356										\$ -
DD Day Program	91354/91356				\$ 230	\$ 11,259					\$ 11,490
DD Day Program	91353						\$ 37			\$ 1,200	\$ 1,237
ACT-South	83290							\$ 10,128			\$ 10,128
ACT-North	93290	\$ 137								\$ 6,000	\$ 6,137
Clubhouse-South	83345							\$ 3,568			\$ 3,568
Clubhouse-North	93345								\$ 10,930		\$ 10,930
Supported Employment	93370	\$ 682							\$ 126		\$ 808
Supportive Housing	93610								\$ 944		\$ 944
Older Adult Services	95825/95921	\$ 939									\$ 939
Prevention	95821	\$ 23									\$ 23
Decisions to Actions	96000/96001			\$ 54							\$ 54
		\$ 12,000	\$ 2,000	\$ 2,500	\$ 13,000	\$ 11,500	\$ 14,000	\$ 18,000	\$ 12,000	\$ 19,200	\$ 104,200

Summary:		
<u>Residential</u>		
DD Respite Care	\$ 685	
Supportive Housing	\$ 944	
Crisis Residential	\$ 6,193	7,823
<u>Skill Building & Day Support Services</u>		
DD Day Program	\$ 12,727	
PSR Clubhouse-North/South	\$ 14,498	
Supported Employment	\$ 808	28,032
<u>Clinical Services</u>		
DD Clinical	\$ 3,537	
MIA/MIC Outpatient	\$ 2,222	
Psychiatric	\$ 5	5,764
<u>Support Services</u>		
DD Supports Coordination/CSM	\$ 11,910	
MIA Casemanagement	\$ 14,437	
Assertive Comm Trx-North/South	\$ 16,265	
MIC Case Management	\$ 1,754	44,365
<u>Other Support Services</u>		
Older Adult Services	\$ 939	
Wrap Around		
Decisions to Actions	\$ 54	993
<u>Administrative Services</u>		
Board Administration	\$ 9,069	
Program Administration-All	\$ 3,808	
Hospital Liaison	\$ 3,066	
Psychiatric Administration (see medical director breakdown)	\$ 0	
Prevention/Homeless	\$ 23	15,966
<u>Medicaid Managed Care Administration</u>		
Northern Affiliation	\$ 1,256	
Less: Northeast/Ausable Valley GF/ABW MI Child Portion)	\$ -	
	\$ 104,200	

North Country Community Mental Health Rent/Lease-Equipment Allocation Schedule

Rent/Lease-Equipment includes computer leases, copy machine leases, and postage meter leases. Monthly invoices for computer leases (CIT Technology and HP) identify the amount for each computer leased. The computers are identified to individual employees who work in their respective reporting unit. Each invoice is allocated to reporting units based on total monthly costs of computers assigned to each employee at the reporting unit as a percentage of monthly invoiced amounts. North Country Community Mental Health also leases several copy machines and postage meters located at various sites throughout the six county area. Copy machine and postage machine leases are allocated to various reporting units on the basis of FTE's located within the site. If only one reporting unit is located at the site, the lease is charged directly to the reporting unit. Some small leases that identify with only with one reporting unit are charged directly to the reporting unit.

The following pages give a detail breakdown on how rent/lease-equipment is allocated at each program site to reporting units.

**North Country Community Mental Health
Rent/Lease-Equipment Allocation Schedule**

Reporting Unit	Program Code	Location	Monthly Lease Cost	Percent Of Total	Annual Computer		Allocated	Allocated	Direct
					Lease				
MIA/MIC Outpatient	93241/93261/93274	CIT Technology	\$ 666.36	25.81%	\$	32,000	\$	8,261	
Psychiatric Services	93270	CIT Technology	\$ 15.55	0.60%	\$	32,000	\$	193	
MIA Case Management	93280	CIT Technology	\$ 372.16	14.42%	\$	32,000	\$	4,613	
Crisis Residential (nurse on call)	93458	CIT Technology	\$ 10.46	0.41%	\$	32,000	\$	130	
MIC Case Management	94280/94281	CIT Technology	\$ 29.21	1.13%	\$	32,000	\$	362	
Board Administration	95021	CIT Technology	\$ 184.39	7.14%	\$	32,000	\$	2,286	
Northern Affiliation (MCO Admin)	66661	CIT Technology	\$ 184.39	7.14%	\$	32,000	\$	2,286	
ACT-South	83290	CIT Technology	\$ 96.67	3.74%	\$	32,000	\$	1,198	
ACT-North	93290	CIT Technology	\$ 147.51	5.71%	\$	32,000	\$	1,829	
PSR Clubhouse-South	83345	CIT Technology	\$ 28.75	1.11%	\$	32,000	\$	356	
DD Program Administration	91210	CIT Technology	\$ 63.81	2.47%	\$	32,000	\$	791	
DD Clinical	91241/91251	CIT Technology	\$ 145.37	5.63%	\$	32,000	\$	1,802	
DD Case Management	91280	CIT Technology	\$ 413.76	16.03%	\$	32,000	\$	5,129	
DD Day Program-Admin	91354/91356	CIT Technology	\$ 36.88	1.43%	\$	32,000	\$	457	
DD Respite Care	91701	CIT Technology	\$ 30.24	1.17%	\$	32,000	\$	375	
Hospital Liaison	93160	CIT Technology	\$ 45.07	1.75%	\$	32,000	\$	559	
Program Admin-CC&T	93210	CIT Technology	\$ 17.77	0.69%	\$	32,000	\$	220	
Program Admin-CSS-MI	93211	CIT Technology	\$ 8.19	0.32%	\$	32,000	\$	102	
Older Adult Services	95825/95921	CIT Technology	\$ 75.84	2.94%	\$	32,000	\$	940	
Decisions to Actions	96000	CIT Technology	\$ 9.00	0.35%	\$	32,000	\$	112	
			\$ 2,581.38	100.00%			\$	32,000	

MIA/MIC Outpatient	93241/93261/93274	Hewlett Packard (HP)	\$ 482.75	33.82%	\$	20,000	\$	6,765	
MIA Case Management	93280	Hewlett Packard (HP)	\$ 41.98	2.94%	\$	20,000	\$	588	
Board Administration	95021	Hewlett Packard (HP)	\$ 321.48	22.52%	\$	20,000	\$	4,505	
Northern Affiliation (MCO Admin)	66661	Hewlett Packard (HP)	\$ 56.32	3.95%	\$	20,000	\$	789	
ACT-South	83290	Hewlett Packard (HP)	\$ 41.98	2.94%	\$	20,000	\$	588	
PSR Clubhouse-South	83345	Hewlett Packard (HP)	\$ 41.98	2.94%	\$	20,000	\$	588	
DD Program Administration	91210	Hewlett Packard (HP)	\$ 83.96	5.88%	\$	20,000	\$	1,177	
DD Clinical	91241/91251	Hewlett Packard (HP)	\$ 83.96	5.88%	\$	20,000	\$	1,177	
DD Case Management	91280	Hewlett Packard (HP)	\$ 140.53	9.85%	\$	20,000	\$	1,969	
DD Respite Care	91701	Hewlett Packard (HP)	\$ 27.38	1.92%	\$	20,000	\$	384	
Program Admin-CC&T	93210	Hewlett Packard (HP)	\$ 62.97	4.41%	\$	20,000	\$	882	
Program Admin-CSS-MI	93211	Hewlett Packard (HP)	\$ 41.98	2.94%	\$	20,000	\$	588	
			\$ 1,427.27	100.00%			\$	20,000	

Reporting Unit	Program Code	Location	Number of FTE	Percent Of Total	Annual		Allocated	Allocated	Direct
					Leases-Other				
MIA/MIC Outpatient	93241/93261/93274	Lockwood-2nd Floor	1.573200	4.77%	\$	5,157	\$	246	
Psychiatric Services	93270	Lockwood-2nd Floor	0.044400	0.13%	\$	5,157	\$	7	
MIA Case Management	93280	Lockwood-2nd Floor	3.622400	10.98%	\$	5,157	\$	566	
Crisis Residential (nurse on call)	93458	Lockwood-2nd Floor	0.855800	2.59%	\$	5,157	\$	134	
MIC Case Management	94280/94281	Lockwood-2nd Floor	0.000000	0.00%	\$	5,157	\$	-	
Board Administration	95021	Lockwood-2nd Floor	19.394900	58.78%	\$	5,157	\$	3,031	
Northern Affiliation (MCO Admin)	66661	Lockwood-2nd Floor	2.605100	7.89%	\$	5,157	\$	407	
DD Clinical	91241	Lockwood-2nd Floor	0.001300	0.00%	\$	5,157	\$	0	
Hospital Liaison	93160	Lockwood-2nd Floor	1.222200	3.70%	\$	5,157	\$	191	
Program Admin-CSS-MI	93211	Lockwood-2nd Floor	1.222200	3.70%	\$	5,157	\$	191	
Wrap Around	94801	Lockwood-2nd Floor	0.000000	0.00%	\$	5,157	\$	-	
Prevention Indirect	95821	Lockwood-2nd Floor	0.000000	0.00%	\$	5,157	\$	-	
Older Adult Services	95825/95921	Lockwood-2nd Floor	2.456700	7.44%	\$	5,157	\$	384	
Affiliation	66661	Lockwood-2nd Floor	0.000000	0.00%	\$	5,157	\$	-	
			32.9982	100.00%			\$	5,157	

MIA/MIC Outpatient	93241/93261/93274	Charlevoix	6.19	59.53%	\$	1,400	\$	833	
Psychiatric Services	93270	Charlevoix	0.50	4.76%	\$	1,400	\$	67	
MIA Case Management	93280	Charlevoix	1.24	11.90%	\$	1,400	\$	167	
Program Admin-CC&T	93210	Charlevoix	1.24	11.90%	\$	1,400	\$	167	
Decisions to Actions	96000	Charlevoix	1.24	11.90%	\$	1,400	\$	167	
			10.40	100.00%			\$	1,400	

Reporting Unit	Program Code	Location	Number of FTE	Percent Of Total	Annual		Allocated	Allocated	Direct
					Leases-Other				
MIA/MIC Outpatient	93241/93261/93274	Cheboygan	4.95	52.70%	\$	775	\$	408	
Psychiatric Services	93270	Cheboygan	0.51	5.40%	\$	775	\$	42	
MIA Case Management	93280	Cheboygan	2.54	27.03%	\$	775	\$	209	
Crisis Residential (nurse on call)	93458	Cheboygan	0.13	1.35%	\$	775	\$	10	
MIC Case Management	94280/94281	Cheboygan	1.27	13.51%	\$	775	\$	105	
			9.40	100.00%			\$	775	

**North Country Community Mental Health
Rent/Lease-Equipment Allocations to Programs**

	CIT									Direct Services	Total
	Technology & HP	Lockwood	Charlevoix	Cheboygan	Otsego	Bellaire	Kalkaska	Rapid City			
MIA/MIC Outpatient	93241/93261/93274	\$ 15,025	\$ 246	\$ 833	\$ 408	\$ 308	\$ 630				\$ 17,450
Psychiatric Services	93270	\$ 193	\$ 7	\$ 67	\$ 42	\$ 33	\$ 60	\$ 1			\$ 462
MIA Case Management	93280	\$ 5,202	\$ 566	\$ 167	\$ 209			\$ 94			\$ 6,238
Crisis Residential	93458	\$ 130	\$ 134		\$ 10						\$ 274
MIC Case Management	94280/94281	\$ 362			\$ 105	\$ 95					\$ 562
Board Administration	95021	\$ 6,791	\$ 3,031			\$ 283				\$ 400	\$ 10,504
Northern Affiliation (MCO Admin)	66661	\$ 3,075	\$ 407							\$ 4,018	\$ 7,500
DD Clinical	91241/91251	\$ 2,979				\$ 1,286	\$ 213				\$ 4,477
DD Case Management	91280	\$ 7,098				\$ 1,936	\$ 412				\$ 9,447
DD Respite Care	91701	\$ 759				\$ 84	\$ 62				\$ 905
Hospital Liaison	93160	\$ 559	\$ 191								\$ 750
Program Admin-DD	91210	\$ 1,968			\$ 337	\$ 95					\$ 2,399
Program Admin-CC&T	93210	\$ 1,103		\$ 167				\$ 90			\$ 1,359
Program Admin-CSS-MI	93211	\$ 690	\$ 191								\$ 881
Program Admin-DD Day Program	91354/91356	\$ 457			\$ 141						\$ 598
ACT-South	83290	\$ 1,787						\$ 125			\$ 1,911
ACT-North	93290	\$ 1,829									\$ 1,829
Clubhouse-South	83345	\$ 945						\$ 144			\$ 1,088
Clubhouse-North	93345									\$ 2,276	\$ 2,276
Supportive Housing	93610									\$ 363	\$ 363
Older Adult Services	95825/95921	\$ 940	\$ 384								\$ 1,324
Decisions to Actions	96000/96001	\$ 112		\$ 167							\$ 278
		\$ 52,000	\$ 5,157	\$ 1,400	\$ 775	\$ 3,843	\$ 1,500	\$ 780	\$ 363	\$ 7,057	\$ 72,875

Less: Northeast/Ausable Valley GF, ABW, and MI Child portion of the Access Center, Inpatient claims adjudication for the indigent population and standard setting dues \$ (221)
\$ 72,654

Summary:		
<u>Residential</u>		
DD Respite Care	905	
Supportive Housing	363	
Crisis Residential	274	\$ 1,541
<u>Skill Building & Day Support Services</u>		
DD Day Program	-	
PSR Clubhouse-North/South	3,364	
Supported Employment	-	3,364
<u>Clinical Services</u>		
DD Clinical	4,477	
MIA/MIC Outpatient	17,450	
Psychiatric	354	\$ 22,281
<u>Support Services</u>		
DD Supports Coordination/CSM	9,447	
MIA Casemanagement	6,238	
Assertive Comm Trx-North/South	3,740	
MIC Case Management	562	\$ 19,986
<u>Other Support Services</u>		
Older Adult Services	1,324	
Wrap Around	-	
Decisions to Actions	278	\$ 1,602
<u>Administrative Services</u>		
Board Administration	10,504	
Program Administration-All	5,237	
Hospital Liaison	750	
Psychiatric Administration (see medical director breakdown)	108	
Prevention/Homeless	-	16,599
<u>Medicaid Managed Care Administration</u>		
Northern Affiliation	7,500	
Less: Northeast/Ausable Valley GF/ABW MI Child Portion)	(221)	7,279
		\$ 72,654

North Country Community Mental Health Liability Insurance and Worker's Compensation Allocation

North Country Community Mental Health has several service sites located throughout the six county service area. Liability insurance (with the exception of doctor liability insurance) and worker's compensation is spread on the basis of FTE's located within each reporting unit at each site as a percentage of the total FTE's. Doctors liability insurance is charged directly to the psychiatric services and ACT reporting unit based on psychiatric service allocation to each of these departments.

The following pages give a detail breakdown on how these insurance costs are allocated at each program site to reporting units.

**North Country Community Mental Health
Liability Insurance (MMRMA) Allocation Schedule**

Reporting Unit	Program Code	Otsego FTE's	Charlevoix FTE's	Cheboygan FTE's	Lockwood FTE's	Bellaire FTE's	Rapid City FTE's	Kalkaska FTE's	PSR Clubhouse Petoskey	Supported Employment	Supportive Housing	ACT-North	Crisis Residential	DD Day Prgm	Total-All	Percent of Total	Annual Liability Ins. (MMRMA)	Allocated
ACT-South	83290						4.67								4.67	2.46%	\$ 124,900	3,075
PSR Clubhouse-South	83345						5.38								5.38	2.84%	\$ 124,900	3,542
DD Program Administration	91210	2.39				1.34									3.73	1.97%	\$ 124,900	2,456
DD Clinical	91241/91251	9.12			0.0013	3.01									12.13	6.40%	\$ 124,900	7,988
DD Case Management	91280	13.73				5.83									19.57	10.32%	\$ 124,900	12,884
DD Day Program	91353													0.75	0.75	0.40%	\$ 124,900	494
DD Day Program Admin	91354/91356	1.00													1.00	0.53%	\$ 124,900	658
DD Day Program	91354/91356													15.13	15.13	7.98%	\$ 124,900	9,962
DD Respite Care	91701	0.60				0.88									1.47	0.78%	\$ 124,900	969
Hospital Liaison	93160				1.2222										1.22	0.64%	\$ 124,900	805
Program Admin-CC&T	93210		1.24					0.74							1.98	1.04%	\$ 124,900	1,305
Program Admin-CSS-MI	93211				1.2222										1.22	0.64%	\$ 124,900	805
MIA/MIC Outpatient	93241/93261/93274	5.00	6.22	4.98	10.7859	4.35	0.03	5.17							36.55	19.27%	\$ 124,900	24,064
Psychiatric Services	93270	0.42	0.45	0.46	0.5077	0.47		0.50							2.80	1.47%	\$ 124,900	1,840
MIA Case Management	93280	1.00	1.24	2.56	3.6224		3.51								11.93	6.29%	\$ 124,900	7,855
ACT-North	93290											5.00			5.00	2.64%	\$ 124,900	3,292
PSR Clubhouse-North	93345								4.55						4.55	2.40%	\$ 124,900	2,996
Supported Employment	93370									1.00					1.00	0.53%	\$ 124,900	658
Crisis Residential	93458			0.13	0.8558								10.00		10.98	5.79%	\$ 124,900	7,232
Supportive Housing	93610										2.45				2.45	1.29%	\$ 124,900	1,613
Supportive Housing Block	93611										0.17				0.17	0.09%	\$ 124,900	110
Supportive Housing Bridge	93612										0.17				0.17	0.09%	\$ 124,900	110
MIC Case Management	94280/94281			1.28	1.32	1.34									3.94	2.07%	\$ 124,900	2,591
Wrap Around	94801				1.16										1.16	0.61%	\$ 124,900	763
Board Administration	95021				19.39	4.00									23.39	12.33%	\$ 124,900	15,404
Affiliation	66661				2.61										2.61	1.37%	\$ 124,900	1,715
Affiliation-Direct	66661				11.00										11.00	5.80%	\$ 124,900	7,243
Prevention	95821				0.05										0.05	0.03%	\$ 124,900	33
Older Adult Services	95825/95921				2.46										2.46	1.30%	\$ 124,900	1,618
Decisions to Actions	96000/96001		1.24												1.24	0.66%	\$ 124,900	819
Total		33.26	10.40	9.40	56.20	21.23	13.59	6.40	4.55	1.00	2.78	5.00	10.00	15.88	189.69	100.00%		124,900

Doctors Liability Insurance
Doctors liability insurance is charged directly to the psychiatric services and ACT reporting unit.

Direct **22,000**
Total-All **146,900**

Less: Northeast/Ausable Valley GF, ABW, and MI Child portion of the Access Center, Inpatient claims adjudication for the indigent population and standard setting dues (637)
146,263

Summary:	
Residential	
DD Respite Care	969
Supportive Housing	1,613
Supportive Housing Block Grant	110
Supportive Housing Bridge Street	110
Crisis Residential	7,232
	10,034
Skill Building & Day Support Services	
DD Day Program	10,456
PSR Clubhouse-North/South	6,538
Supported Employment	658
	17,652
Clinical Services	
DD Clinical	7,988
MIA/MIC Outpatient	24,064
Psychiatric	20,478
	52,531
Support Services	
DD Supports Coordination/CSM	12,884
MIA Casemanagement	7,855
Assertive Comm Trx-North/South	6,367
MIC Case Management	2,591
	29,698
Other Support Services	
Older Adult Services	1,618
Wrap Around	763
Decisions to Actions	819
	3,199
Administrative Services	
Board Administration	15,404
Program Administration-All	5,224
Hospital Liaison	805
Psychiatric Administration (see medical director breakdown)	3,362
Prevention/Homeless	33
	24,828
Medicaid Managed Care Administration	
Northern Affiliation	8,958
Less: Northeast/Ausable Valley GF/ABW MI Child Portion)	(637)
	8,321
	146,263

**North Country Community Mental Health
Workers Comp Allocation Schedule**

Reporting Unit	Program Code	Otsego FTE's	Charlevoix FTE's	Cheboygan FTE's	Lockwood FTE's	Bellaire FTE's	Rapid City FTE's	Kalkaska FTE's	PSR		Supported Employment	Supportive Housing	ACT- North	Crisis Residential	DD Day Prgm	Total- All	Percent of Total	Annual Workers Comp	Allocated
									Clubhouse Petoskey										
ACT-South	83290						4.67									4.67	2.46%	\$ 127,773	3,145
PSR Clubhouse-South	83345						5.38									5.38	2.84%	\$ 127,773	3,624
DD Program Administration	91210	2.39				1.34										3.73	1.97%	\$ 127,773	2,513
DD Clinical	91241/91251	9.12			0.0013	3.01										12.13	6.40%	\$ 127,773	8,172
DD Case Management	91280	13.73				5.83										19.57	10.32%	\$ 127,773	13,180
DD Day Program	91353														0.75	0.75	0.40%	\$ 127,773	505
DD Day Program Admin	91354/91356	1.00														1.00	0.53%	\$ 127,773	674
DD Day Program	91354/91356													15.13	15.13	7.98%	\$ 127,773	10,191	
DD Respite Care	91701	0.60						0.88								1.47	0.78%	\$ 127,773	992
Hospital Liaison	93160				1.2222											1.22	0.64%	\$ 127,773	823
Program Admin-CC&T	93210		1.24						0.74							1.98	1.04%	\$ 127,773	1,335
Program Admin-CSS-MI	93211				1.2222											1.22	0.64%	\$ 127,773	823
MIA/MIC Outpatient	93241/93261/93274	5.00	6.22	4.98	10.7859	4.35	0.03	5.17								36.55	19.27%	\$ 127,773	24,618
Psychiatric Services	93270	0.42	0.45	0.46	0.5077	0.47		0.50								2.80	1.47%	\$ 127,773	1,883
MIA Case Management	93280	1.00	1.24	2.56	3.6224		3.51									11.93	6.29%	\$ 127,773	8,036
ACT-North	93290												5.00			5.00	2.64%	\$ 127,773	3,368
PSR Clubhouse-North	93345								4.55							4.55	2.40%	\$ 127,773	3,065
Supported Employment	93370									1.00						1.00	0.53%	\$ 127,773	674
Crisis Residential	93458			0.13	0.8558									10.00		10.98	5.79%	\$ 127,773	7,398
Supportive Housing	93610											2.45				2.45	1.29%	\$ 127,773	1,650
Supportive Housing Block	93611									0.17						0.17	0.09%	\$ 127,773	112
Supportive Housing Bridge	93612									0.17						0.17	0.09%	\$ 127,773	112
MIC Case Management	94280/94281			1.28	1.32	1.34										3.94	2.07%	\$ 127,773	2,651
Wrap Around	94801				1.16											1.16	0.61%	\$ 127,773	780
Board Administration	95021				19.39	4.00										23.39	12.33%	\$ 127,773	15,758
Affiliation	66661				2.61											2.61	1.37%	\$ 127,773	1,755
Affiliation-Direct	66661				11.00											11.00	5.80%	\$ 127,773	7,409
Prevention	95821				0.05											0.05	0.03%	\$ 127,773	34
Older Adult Services	95825/95921				2.46											2.46	1.30%	\$ 127,773	1,655
Decisions to Actions	96000/96001		1.24													1.24	0.66%	\$ 127,773	838
Total		33.26	10.40	9.40	56.20	21.23	13.59	6.40	4.55	1.33	2.45	5.00	10.00	15.88	189.69	100.00%			127,773

Summary:	
<u>Residential</u>	
DD Respite Care	992
Supportive Housing	1,650
Supportive Housing Block Grant	112
Supportive Housing Bridge Street	112
Crisis Residential	7,398
10,265	
<u>Skill Building & Day Support Services</u>	
DD Day Program	10,696
PSR Clubhouse-North/South	6,688
Supported Employment	674
18,058	
<u>Clinical Services</u>	
DD Clinical	8,172
MIA/MIC Outpatient	24,618
Psychiatric	1,577
34,366	
<u>Support Services</u>	
DD Supports Coordination/CSM	13,180
MIA Casemanagement	8,036
Assertive Comm Trx-North/South	6,513
MIC Case Management	2,651
30,381	
<u>Other Support Services</u>	
Older Adult Services	1,655
Wrap Around	780
Decisions to Actions	838
3,273	
<u>Administrative Services</u>	
Board Administration	15,758
Program Administration-All	5,345
Hospital Liaison	823
Psychiatric Administration (see medical director breakdown)	306
Prevention/Homeless	34
22,266	
<u>Medicaid Managed Care Administration</u>	
Northern Affiliation	9,164
\$ 9,164	
127,773	

North Country Community Mental Health Communications Allocation

Communications include telephone, t-1 lines, cell phones, and pager costs. North Country Community Mental Health has several service sites located throughout the six county service area. Many reporting units located at the same site have their own designated phone numbers and are billed on separate invoices. Communications costs for these reporting units are reported as direct costs. Otherwise, communication costs are allocated to various reporting units on the basis of FTE's located within the site. The cost of pagers is allocated on the basis of total FTE's located in the southern counties (Antrim and Kalkaska) vs. northern counties (Charlevoix, Cheboygan, Emmet, and Otsego). This is because the agency uses different vendors for these locations.

The following pages give a detail breakdown on how communications costs are allocated at each program site to reporting units.

**North Country Community Mental Health
Communications Allocation**

Reporting Unit	Program Code	Location	Number of	Percent	Annual				
			FTE	Of Total	Communications	Allocated	Allocated	Direct	
MIA/MIC Outpatient	93241/93261/93274	Pagers-Southern Counties	9.529	22.57%	\$	1,003	226		
Psychiatric Services	93270	Pagers-Southern Counties	0.997	2.36%	\$	1,003	24		
MIA Case Management	93280	Pagers-Southern Counties	3.509	8.31%	\$	1,003	83		
MIC Case Management	94280/94281	Pagers-Southern Counties	1.342	3.18%	\$	1,003	32		
Board Administration	95021	Pagers-Southern Counties	4.350	10.30%	\$	1,003	103		
DD Program Administration	91210	Pagers-Southern Counties	1.342	3.18%	\$	1,003	32		
DD Clinical	91241/91251	Pagers-Southern Counties	3.014	7.14%	\$	1,003	72		
DD Case Management	91280	Pagers-Southern Counties	5.835	13.82%	\$	1,003	139		
DD Respite Care	91701	Pagers-Southern Counties	0.875	2.07%	\$	1,003	21		
Program Admin-CC&T	93210	Pagers-Southern Counties	0.738	1.75%	\$	1,003	18		
ACT-South	83290	Pagers-Southern Counties	4.670	11.06%	\$	1,003	111		
PSR Clubhouse-South	83345	Pagers-Southern Counties	6.030	14.28%	\$	1,003	143		
			42.230	100.00%				1,003	
MIA/MIC Outpatient	93241/93261/93274	Pagers-Northern Counties	28.560	21.24%	\$	3,978	845		
Psychiatric Services	93270	Pagers-Northern Counties	1.859	1.38%	\$	3,978	55		
MIA Case Management	93280	Pagers-Northern Counties	8.545	6.36%	\$	3,978	253		
Crisis Residential	93458	Pagers-Northern Counties	10.049	7.48%	\$	3,978	297		
MIC Case Management	94280/94281	Pagers-Northern Counties	2.594	1.93%	\$	3,978	77		
Board Administration	95021	Pagers-Northern Counties	19.395	14.43%	\$	3,978	574		
Northern Affiliation (MCO Admin)	66661	Pagers-Northern Counties	0.605	0.45%	\$	3,978	18	\$	400
DD Program Administration	91210	Pagers-Northern Counties	2.388	1.78%	\$	3,978	71		
DD Clinical	91241/91251	Pagers-Northern Counties	7.859	5.85%	\$	3,978	233		
DD Case Management	91280	Pagers-Northern Counties	13.733	10.22%	\$	3,978	406		
DD Day Program Admin	91354/91356	Pagers-Northern Counties	1.000	0.74%	\$	3,978	30		
DD Day Program	91354/91356	Pagers-Northern Counties	16.125	11.99%	\$	3,978	477		
DD Respite Care	91701	Pagers-Northern Counties	0.597	0.44%	\$	3,978	18		
Hospital Liaison	93160	Pagers-Northern Counties	1.222	0.91%	\$	3,978	36		
Program Admin-CSS-MI	93211	Pagers-Northern Counties	1.222	0.91%	\$	3,978	36		
Program Admin-CC&T	93210	Pagers-Northern Counties	1.244	0.93%	\$	3,978	37		
ACT-North	93290	Pagers-Northern Counties	5.168	3.84%	\$	3,978	153		
PSR Clubhouse-North	93345	Pagers-Northern Counties	4.550	3.38%	\$	3,978	135		
Supported Employment	93370	Pagers-Northern Counties	1.000	0.74%	\$	3,978	30		
Supported Housing	93610	Pagers-Northern Counties	2.450	1.82%	\$	3,978	72		
Wrap Around	94801	Pagers-Northern Counties	0.658	0.49%	\$	3,978	19		
Older Adult Services	95825/95921	Pagers-Northern Counties	2.307	1.72%	\$	3,978	68		
Decisions To Actions	96000	Pagers-Northern Counties	1.304	0.97%	\$	3,978	39		
			134.435					3,978	
MIA Case Management	93280	Lockwood-CSS MI	5.911	53.76%	\$	2,700	1,451		
Crisis Residential (nurse on call)	93458	Lockwood-CSS MI	0.856	7.78%	\$	2,700	210		
Hospital Liaison	93160	Lockwood-CSS MI	1.222	11.11%	\$	2,700	300	\$	200
MIA/MIC Outpatient	93241/93261/93274	Lockwood-CSS MI	1.573	14.31%	\$	2,700	386		
Psychiatric Services	93270	Lockwood-CSS MI	0.044	0.40%	\$	2,700	11		
Program Admin-CSS-MI	93211	Lockwood-CSS MI	1.222	11.11%	\$	2,700	300	\$	164
Older Adult Services	95825/95921	Lockwood-CSS MI	0.168	1.52%	\$	2,700	41	\$	2,000
			10.997	100.00%				\$ 2,700	
MIA/MIC Outpatient	93241/93261/93274	Lockwood-1st Floor	9.036	74.07%	\$	5,000	3,704	\$	132
Psychiatric Services	93270	Lockwood-1st Floor	0.516	4.23%	\$	5,000	211		
MIC Case Management	94280/94281	Lockwood-1st Floor	1.291	10.58%	\$	5,000	529		
Wrap Around	94801	Lockwood-1st Floor	1.291	10.58%	\$	5,000	529		
Prevention Indirect	95821	Lockwood-1st Floor	0.065	0.53%	\$	5,000	27		
			12.199					\$ 5,000	
MIA/MIC Outpatient	93241/93261/93274	Charlevoix	6.19	59.53%	\$	4,300	2,560		
Psychiatric Services	93270	Charlevoix	0.50	4.76%	\$	4,300	205		
MIA Case Management	93280	Charlevoix	1.24	11.90%	\$	4,300	512		
Program Admin-CC&T	93210	Charlevoix	1.24	11.90%	\$	4,300	512	\$	28
Decisions to Actions	96000	Charlevoix	1.24	11.90%	\$	4,300	512		
			10.40	100.00%				\$ 4,300	
MIA/MIC Outpatient	93241/93261/93274	Cheboygan	4.95	52.70%	\$	5,500	2,899		
Psychiatric Services	93270	Cheboygan	0.51	5.40%	\$	5,500	297		
MIA Case Management	93280	Cheboygan	2.54	27.03%	\$	5,500	1,487		
Crisis Residential (nurse on call)	93458	Cheboygan	0.13	1.35%	\$	5,500	74		
MIC Case Management	94280/94281	Cheboygan	1.27	13.51%	\$	5,500	743		
			9.40	100.00%				\$ 5,500	

**North Country Community Mental Health
Communications Allocations to Programs**

		Southern & Northern Counties	Lockwood	Charlevoix	Cheboygan	Otsego	Bellaire	Kalkaska	Rapid City	Direct Services	Total
MIA/MIC Outpatient	93241/93261/93274	\$ 1,071	\$ 4,222	\$ 2,560	\$ 2,899	\$ 3,499	\$ 7,179	\$ 5,651			\$ 27,081
Psychiatric Services	93270	\$ 79	\$ 222	\$ 205	\$ 297	\$ 154	\$ 772	\$ 542	\$ 22	\$ 1,000	\$ 3,293
MIA Case Management	93280	\$ 336	\$ 1,451	\$ 512	\$ 1,487	\$ 701			\$ 2,323		\$ 6,810
Crisis Residential	93458	\$ 297	\$ 210		\$ 74					\$ 3,800	\$ 4,382
MIC Case Management	94280/94281	\$ 109	\$ 529		\$ 743		\$ 2,212				\$ 3,593
Board Administration	95021	\$ 677	\$ -				\$ 6,594			\$ 106,918	\$ 114,190
Northern Affiliation (MCO Admin)	66661	\$ 418	\$ -							\$ 12,582	\$ 13,000
DD Clinical	91241/91251	\$ 304				\$ 4,904	\$ 4,968				\$ 10,176
DD Case Management	91280	\$ 545				\$ 10,058	\$ 9,619				\$ 20,222
DD Respite Care	91701	\$ 38				\$ 219	\$ 1,443				\$ 1,700
Hospital Liaison	93160	\$ 36	\$ 500								\$ 536
Program Admin-DD	91210	\$ 103				\$ 1,490	\$ 2,212				\$ 3,805
Program Admin-CC&T	93210	\$ 54		\$ 540				\$ 807			\$ 1,401
Program Admin-CSS-MI	93211	\$ 36	\$ 464								\$ 500
Program Admin-DD Day Program	91354/91356	\$ 30				\$ 367					\$ 396
DD Day Program	91354/91356	\$ 477								\$ 3,547	\$ 4,024
ACT-South	83290	\$ 111							\$ 5,892		\$ 6,003
ACT-North	93290	\$ 153								\$ 3,252	\$ 3,405
Clubhouse-South	83345	\$ 143							\$ 9,762		\$ 9,905
Clubhouse-North	93345	\$ 135								\$ 7,000	\$ 7,135
Supported Employment	93370	\$ 30									\$ 30
Supported Housing	93610	\$ 72									\$ 72
Supportive Housing-Bridge Street	93612									\$ 2,000	\$ 2,000
Wrap Around	94801	\$ 19	\$ 529								\$ 549
Prevention Indirect	95821	\$ -	\$ 27								\$ 27
Older Adult Services	95825/95921	\$ 68	\$ 2,041								\$ 2,109
Decisions to Actions	96000/96001	\$ 39		\$ 512	\$ 750						\$ 1,300
		\$ 5,381	\$ 10,196	\$ 4,328	\$ 6,250	\$ 21,391	\$ 35,000	\$ 7,000	\$ 18,000	\$ 140,099	\$ 247,645

Less: Northeast/Ausable Valley GF, ABW, and MI Child portion of the Access Center, Inpatient claims adjudication for the indigent population and standard setting dues \$ (336)
\$ 247,309

Summary:	
<u>Residential</u>	
DD Respite Care	1,700
Supportive Housing	72
Supportive Housing-Bridge Street	2,000
Crisis Residential	4,382
	\$ 8,154
<u>Skill Building & Day Support Services</u>	
DD Day Program	4,024
PSR Clubhouse-North/South	17,040
Supported Employment	30
	21,094
<u>Clinical Services</u>	
DD Clinical	10,176
MIA/MIC Outpatient	27,081
Psychiatric	2,702
	\$ 39,959
<u>Support Services</u>	
DD Supports Coordination/CSM	20,222
MIA Casemanagement	6,810
Assertive Comm Trx-North/South	9,408
MIC Case Management	3,593
	\$ 40,033
<u>Other Support Services</u>	
Older Adult Services	2,109
Wrap Around	549
Decisions to Actions	1,300
	\$ 3,959
<u>Administrative Services</u>	
Board Administration	114,190
Program Administration-All	6,103
Hospital Liaison	536
Psychiatric Administration (see medical director breakdown)	591
Prevention/Homeless	27
	121,446
<u>Medicaid Managed Care Administration</u>	
Northern Affiliation	13,000
Less: Northeast/Ausable Valley GF/ABW MI Child Portion)	(336)
	12,664
	\$ 247,309

North Country Community Mental Health Vehicle Gasoline Allocation

North Country Community Mental Health has several service sites located throughout the six county service area. If only one reporting unit is located at the site, vehicle gasoline is charged directly to the reporting unit. Otherwise these costs are allocated to various reporting units on the basis of mileage recorded in the vehicle logs by reporting units within the site. Where possible, we also identify direct purchases to reporting units via information on the purchase requisition.

The following pages give a detail breakdown on how vehicle gasoline allocated at each program site to reporting units.

**North Country Community Mental Health
Vehicle Gasoline Allocation Schedule**

Reporting Unit	Program Code	Location	Annual Miles Per Vehicle Log	Percent Of Total	Annual Vehicle Gas	Allocated	Allocated	Direct
MIA/MIC Outpatient	93241/93261/93274	Lockwood	1,892	2.55%	\$ 10,000	\$ 255		
Psychiatric Services	93270	Lockwood	4	0.01%	\$ 10,000	\$ 1		
MIA Case Management	93280	Lockwood	18,700	25.18%	\$ 10,000	\$ 2,518		
Crisis Residential (nurse on call)	93458	Lockwood	1,132	1.52%	\$ 10,000	\$ 152		
MIC Case Management	94280/94281	Lockwood	258	0.35%	\$ 10,000	\$ 35		
Board Administration	95021	Lockwood	13,816	18.60%	\$ 10,000	\$ 1,860	\$	1,500
Northern Affiliation (MCO Admin)	66661	Lockwood	7,776	10.47%	\$ 10,000	\$ 1,047		
Hospital Liaison	93160	Lockwood	406	0.55%	\$ 10,000	\$ 55	\$	2,000
Program Admin-CSS-MI	93211	Lockwood	7,386	9.95%	\$ 10,000	\$ 995		
DD Clinical	91241/91251	Lockwood	378	0.51%	\$ 10,000	\$ 51		
DD Case Management	91280	Lockwood	11,498	15.48%	\$ 10,000	\$ 1,548		
ACT-North	93290	Lockwood	848	1.14%	\$ 10,000	\$ 114		
Supported Employment	93370	Lockwood	4,218	5.68%	\$ 10,000	\$ 568		
Prevention	95821	Lockwood	142	0.19%	\$ 10,000	\$ 19		
Older Adult Services	95825/95921	Lockwood	5,810	7.82%	\$ 10,000	\$ 782		
			74,264	100.00%			\$	10,000
MIA/MIC Outpatient	93241/93261/93274	Charlevoix	127	0.89%	\$ 2,000	\$ 18		
DD Clinical	91241/91251	Charlevoix	293	2.06%	\$ 2,000	\$ 41		
DD Case Management	91280	Charlevoix	197	1.39%	\$ 2,000	\$ 28		
MIA Case Management	93280	Charlevoix	13,579	95.65%	\$ 2,000	\$ 1,913		
			14,196	100.00%			\$	2,000
MIA/MIC Outpatient	93241/93261/93274	Cheboygan	718	4.82%	\$ 2,200	\$ 106		
Psychiatric Services	93270	Cheboygan	3	0.02%	\$ 2,200	\$ 0		
MIA Case Management	93280	Cheboygan	13,779	92.46%	\$ 2,200	\$ 2,034		
Crisis Residential (nurse on call)	93458	Cheboygan	63	0.42%	\$ 2,200	\$ 9		
MIC Case Management	94280/94281	Cheboygan	17	0.11%	\$ 2,200	\$ 3		
Decisions to Actions	96001	Cheboygan	322	2.16%	\$ 2,200	\$ 48		
			14,902	100.00%			\$	2,200
MIA/MIC Outpatient	93241/93261/93274	Otsego	1,564	1.93%	\$ 11,000	\$ 212		
Psychiatric Services	93270	Otsego	8	0.01%	\$ 11,000	\$ 1		
MIA Case Management	93280	Otsego	762	0.94%	\$ 11,000	\$ 103		
Board Administration	95021	Otsego	22	0.03%	\$ 11,000	\$ 3		
DD Program Administration	91210	Otsego	4,542	5.59%	\$ 11,000	\$ 615		
DD Clinical	91241/91251	Otsego	15,638	19.25%	\$ 11,000	\$ 2,118		
DD Case Management	91280	Otsego	55,022	67.75%	\$ 11,000	\$ 7,452		
DD Day Program	91354/91356	Otsego	1,440	1.77%	\$ 11,000	\$ 195		
DD Respite Care	91701	Otsego	2,220	2.73%	\$ 11,000	\$ 301		
			81,218	100.00%			\$	11,000
MIA/MIC Outpatient	93241/93261/93274	DD Day Program	167	0.24%	\$ 9,500	\$ 23		
Psychiatric Services	93270	DD Day Program	8	0.01%	\$ 9,500	\$ 1		
WDW/GAW	91354/91356	DD Day Program	67,318	97.91%	\$ 9,500	\$ 9,301		
DD Case Management	91280	DD Day Program	1,217	1.77%	\$ 9,500	\$ 168		
MIA Case Management	93280	DD Day Program	33	0.05%	\$ 9,500	\$ 5		
Board Administration	95021	DD Day Program	13	0.02%	\$ 9,500	\$ 2		
			68,756	100.00%			\$	9,500
MIA/MIC Outpatient	93241/93261/93274	Bellaire	6,700	10.71%	\$ 9,000	\$ 964		
MIA Case Management	93280	Bellaire	12,329	19.71%	\$ 9,000	\$ 1,774		
Psychiatric Services	93270	Bellaire	7	0.01%	\$ 9,000	\$ 1		
MIC Case Management	94280/94281	Bellaire	7,636	12.21%	\$ 9,000	\$ 1,099		
Board Administration	95021	Bellaire	17,119	27.37%	\$ 9,000	\$ 2,463		
DD Program Administration	91210	Bellaire	8,435	13.48%	\$ 9,000	\$ 1,214		
DD Clinical	91241/91251	Bellaire	4,161	6.65%	\$ 9,000	\$ 599		
DD Case Management	91280	Bellaire	4,529	7.24%	\$ 9,000	\$ 652		
DD Respite Care	91701	Bellaire	1,475	2.36%	\$ 9,000	\$ 212		
DD Day Program	91353	Bellaire	164	0.26%	\$ 9,000	\$ 24		
			62,555	100.00%			\$	9,000

**North Country Community Mental Health
Vehicle Gasoline Allocations to Programs**

		Lockwood	Charlevoix	Cheboygan	Otsego	DD Day Program	Bellaire	Rapid City	Petoskey	Direct Services	Total
MIA/MIC Outpatient	93241/93261/93274	\$ 255	\$ 18	\$ 106	\$ 212	\$ 23	\$ 964				\$ 1,578
Psychiatric Services	93270	\$ 1		\$ -	\$ 1	\$ 1	\$ 1				\$ 4
MIA Case Management	93280	\$ 2,518	\$ 1,913	\$ 2,034	\$ 103	\$ 5	\$ 1,774	\$ 3,467			\$ 11,814
Crisis Residential	93458	\$ 152		\$ 9						\$ 5,000	\$ 5,162
MIC Case Management	94280/94281	\$ 35		\$ 3			\$ 1,099				\$ 1,136
Board Administration	95021	\$ 1,860			\$ 3	\$ 2	\$ 2,463			\$ 1,500	\$ 5,828
Northern Affiliation (MCO Admin)	66661	\$ 1,047									\$ 1,047
DD Clinical	91241/91251	\$ 51	\$ 41		\$ 2,118		\$ 599				\$ 2,809
DD Case Management	91280	\$ 1,548	\$ 28		\$ 7,452	\$ 168	\$ 652				\$ 9,848
DD Respite Care	91701				\$ 301		\$ 212				\$ 513
Hospital Liaison	93160	\$ 55								\$ 2,000	\$ 2,055
Program Admin-DD	91210				\$ 615		\$ 1,214				\$ 1,829
Program Admin-CC&T	93210										\$ -
Program Admin-CSS-MI	93211	\$ 995									\$ 995
Program Admin-DD Day Program	91354/91356										\$ -
DD Day Program	91354/91356				\$ 195	\$ 9,301					\$ 9,496
DD Day Program	91353						\$ 24			\$ 3,176	\$ 3,200
ACT-South	83290							\$ 8,159			\$ 8,159
ACT-North	93290	\$ 114								\$ 6,500	\$ 6,614
Clubhouse-South	83345							\$ 2,874		\$ 2,000	\$ 4,874
Clubhouse-North	93345								\$ 10,930	\$ 4,000	\$ 14,930
Supported Employment	93370	\$ 568							\$ 126		\$ 694
Supportive Housing	93610								\$ 944		\$ 944
Older Adult Services	95825/95921	\$ 782									\$ 782
Prevention	95821	\$ 19									\$ 19
Decisions to Actions	96000/96001			\$ 48							\$ 48
		\$ 10,000	\$ 2,000	\$ 2,200	\$ 11,000	\$ 9,500	\$ 9,000	\$ 14,500	\$ 12,000	\$ 24,176	\$ 94,376

Summary:		
<u>Residential</u>		
DD Respite Care	\$ 513	
Supportive Housing	\$ 944	
Crisis Residential	\$ 5,162	6,619
<u>Skill Building & Day Support Services</u>		
DD Day Program	\$ 12,696	
PSR Clubhouse-North/South	\$ 19,804	
Supported Employment	\$ 694	33,194
<u>Clinical Services</u>		
DD Clinical	\$ 2,809	
MIA/MIC Outpatient	\$ 1,578	
Psychiatric	\$ 4	4,390
<u>Support Services</u>		
DD Supports Coordination/CSM	\$ 9,848	
MIA Casemanagement	\$ 11,814	
Assertive Comm Trx-North/South	\$ 14,773	
MIC Case Management	\$ 1,136	37,571
<u>Other Support Services</u>		
Older Adult Services	\$ 782	
Wrap Around		
Decisions to Actions	\$ 48	830
<u>Administrative Services</u>		
Board Administration	\$ 5,828	
Program Administration-All	\$ 2,823	
Hospital Liaison	\$ 2,055	
Psychiatric Administration (see medical director breakdown)	0	
Prevention/Homeless	\$ 19	10,725
<u>Medicaid Managed Care Administration</u>		
Northern Affiliation	\$ 1,047	
Less: Northeast/Ausable Valley GF/ABW MI Child Portion)	\$ -	
	\$ 94,376	

North Country Community Mental Health Depreciation Allocation

North Country Community Mental Health is depreciating purchases costing in excess of \$5,000 for each item. Equipment items that are depreciated include, but are not limited to vehicles, Avatar data collection software, file servers, copy machines, and major purchases for residential homes. If multiple reporting units use vehicles, depreciation is allocated on the basis of mileage logs. If only one reporting unit uses the vehicle, then the depreciation is charged directly to that reporting unit. Avatar software and file server depreciation are charged directly to Board Administration. Depreciation of major purchases for residential homes is also charged directly to the benefiting reporting unit. Currently copy machines are leased or fully depreciated.

The following pages give a detail breakdown on how depreciation expense is allocated at each program site to reporting units.

**North Country Community Mental Health
Depreciation Expense Allocation Schedule**

Reporting Unit	Program Code	Location	Annual Miles Per Vehicle Log	Percent Of Total	Annual Depreciation	Allocated	Allocated	Direct
MIA/MIC Outpatient	93241/93261/93274	Lockwood	1,892	2.55%	\$ 6,904	\$ 176		
Psychiatric Services	93270	Lockwood	4	0.01%	\$ 6,904	\$ 0		
MIA Case Management	93280	Lockwood	18,700	25.18%	\$ 6,904	\$ 1,738		
Crisis Residential (nurse on call)	93458	Lockwood	1,132	1.52%	\$ 6,904	\$ 105		
MIC Case Management	94280/94281	Lockwood	258	0.35%	\$ 6,904	\$ 24		
Board Administration	95021	Lockwood	13,816	18.60%	\$ 6,904	\$ 1,284	\$	4,905
Northern Affiliation (MCO Admin)	66661	Lockwood	7,776	10.47%	\$ 6,904	\$ 723		
Hospital Liaison	93160	Lockwood	406	0.55%	\$ 6,904	\$ 38	\$	4,352
Program Admin-CSS-MI	93211	Lockwood	7,386	9.95%	\$ 6,904	\$ 687		
DD Clinical	91241/91251	Lockwood	378	0.51%	\$ 6,904	\$ 35		
DD Case Management	91280	Lockwood	11,498	15.48%	\$ 6,904	\$ 1,069		
ACT-North	93290	Lockwood	848	1.14%	\$ 6,904	\$ 79		
Supported Employment Prevention	93370 95821	Lockwood	4,218 142	5.68% 0.19%	\$ 6,904 \$ 6,904	\$ 392 \$ 13		
Older Adult Services	95825/95921	Lockwood	5,810	7.82%	\$ 6,904	\$ 540		
			74,264	100.00%			\$ 6,904	
MIA/MIC Outpatient	93241/93261/93274	Charlevoix	127	0.89%	\$ 2,917	\$ 26		
DD Clinical	91241/91251	Charlevoix	293	2.06%	\$ 2,917	\$ 60		
DD Case Management	91280	Charlevoix	197	1.39%	\$ 2,917	\$ 40		
MIA Case Management	93280	Charlevoix	13,579	95.65%	\$ 2,917	\$ 2,790		
			14,196	100.00%			\$ 2,917	
MIA/MIC Outpatient	93241/93261/93274	Cheboygan	718	4.82%	\$ 7,253	\$ 349		
Psychiatric Services	93270	Cheboygan	3	0.02%	\$ 7,253	\$ 1		
MIA Case Management	93280	Cheboygan	13,779	92.46%	\$ 7,253	\$ 6,706		
Crisis Residential (nurse on call)	93458	Cheboygan	63	0.42%	\$ 7,253	\$ 31		
MIC Case Management	94280/94281	Cheboygan	17	0.11%	\$ 7,253	\$ 8		
Decisions to Actions	96001	Cheboygan	322	2.16%	\$ 7,253	\$ 157		
			14,902	100.00%			\$ 7,253	
MIA/MIC Outpatient	93241/93261/93274	Otsego	1,564	1.93%	\$ 7,178	\$ 138		
Psychiatric Services	93270	Otsego	8	0.01%	\$ 7,178	\$ 1		
MIA Case Management	93280	Otsego	762	0.94%	\$ 7,178	\$ 67		
Board Administration	95021	Otsego	22	0.03%	\$ 7,178	\$ 2		
DD Program Administration	91210	Otsego	4,542	5.59%	\$ 7,178	\$ 401		
DD Clinical	91241/91251	Otsego	15,638	19.25%	\$ 7,178	\$ 1,382		
DD Case Management	91280	Otsego	55,022	67.75%	\$ 7,178	\$ 4,863		
DD Day Program	91354/91356	Otsego	1,440	1.77%	\$ 7,178	\$ 127		
DD Respite Care	91701	Otsego	2,220	2.73%	\$ 7,178	\$ 196		
			81,218	100.00%			\$ 7,178	
MIA/MIC Outpatient	93241/93261/93274	DD Day Program	167	0.24%	\$ 18,418	\$ 45		
Psychiatric Services	93270	DD Day Program	8	0.01%	\$ 18,418	\$ 2		
WDW/GAW	91354/91356	DD Day Program	67,318	97.91%	\$ 18,418	\$ 18,033		
DD Case Management	91280	DD Day Program	1,217	1.77%	\$ 18,418	\$ 326		
MIA Case Management	93280	DD Day Program	33	0.05%	\$ 18,418	\$ 9		
Board Administration	95021	DD Day Program	13	0.02%	\$ 18,418	\$ 3		
			68,756	100.00%			\$ 18,418	
MIA/MIC Outpatient	93241/93261/93274	Bellaire	6,700	10.71%	\$ 6,904	\$ 739		
MIA Case Management	93280	Bellaire	12,329	19.71%	\$ 6,904	\$ 1,361		
Psychiatric Services	93270	Bellaire	7	0.01%	\$ 6,904	\$ 1		
MIC Case Management	94280/94281	Bellaire	7,636	12.21%	\$ 6,904	\$ 843		
Board Administration	95021	Bellaire	17,119	27.37%	\$ 6,904	\$ 1,889		
DD Program Administration	91210	Bellaire	8,435	13.48%	\$ 6,904	\$ 931		
DD Clinical	91241/91251	Bellaire	4,161	6.65%	\$ 6,904	\$ 459		
DD Case Management	91280	Bellaire	4,529	7.24%	\$ 6,904	\$ 500		
DD Respite Care	91701	Bellaire	1,475	2.36%	\$ 6,904	\$ 163		
DD Day Program	91353	Bellaire	164	0.26%	\$ 6,904	\$ 18	\$	4,850
			62,555	100.00%			\$ 6,904	
ACT-South	83290	Rapid City	55,420	56.27%	\$ 11,514	\$ 6,478		
PSR Clubhouse-South	83345	Rapid City	19,524	19.82%	\$ 11,514	\$ 2,282		
MIA Case Management	93280	Rapid City	23,552	23.91%	\$ 11,514	\$ 2,753		
			98,496				\$ 11,514	

**North Country Community Mental Health
Depreciation Expense Allocation Schedule**

Reporting Unit	Program Code	Location	Annual Miles Per Vehicle Log	Percent Of Total	Annual Depreciation	Allocated	Allocated	Direct	
PSR Clubhouse-North	93345	Petoskey	133,090	91.08%	\$ 10,065	\$ 9,167			
Supported Employment	93370	Petoskey	1,539	1.05%	\$ 10,065	\$ 106			
Supported Housing	93610	Petoskey	11,494	7.87%	\$ 10,065	\$ 792			
							\$ 10,065		
			146,123	100.00%					
Subtotal Depreciation Expense-Vehicles							\$ 71,153	\$	14,107
Depreciation Expense-Other Equipment (charged directly to program)									
File Servers/Avatar Software	95021	Petoskey/Bellaire					\$	11,871	
AK DCH Audit Adjustments	95021						\$	8,248	
Residential Home Equipment	91466/91502						\$	1,246	
File Servers/Avatar MSO	66661	Petoskey					\$	69,277	
Subtotal Depreciation Expense-Other							\$ 71,153	\$	104,749
Total-All								\$	175,902

**North Country Community Mental Health
Depreciation Expense Allocations to Programs**

		Lockwood	Charlevoix	Cheboygan	Otsego	DD Day Program	Bellaire	Rapid City	Petoskey	Direct Services	Total
MIA/MIC Outpatient	93241/93261/93274	\$ 176	\$ 26	\$ 349	\$ 138	\$ 45	\$ 739				\$ 1,474
Psychiatric Services	93270	\$ 0		\$ 1	\$ 1	\$ 2	\$ 1				\$ 5
MIA Case Management	93280	\$ 1,738	\$ 2,790	\$ 6,706	\$ 67	\$ 9	\$ 1,361	\$ 2,753			\$ 15,425
Crisis Residential	93458	\$ 105		\$ 31							\$ 136
MIC Case Management	94280/94281	\$ 24		\$ 8			\$ 843				\$ 875
Board Administration	95021	\$ 1,284			\$ 2	\$ 3	\$ 1,889			\$ 25,024	\$ 28,203
Northern Affiliation (MCO Admin)	66661	\$ 723								\$ 69,277	\$ 70,000
DD Clinical	91241/91251	\$ 35	\$ 60		\$ 1,382		\$ 459				\$ 1,937
DD Case Management	91280	\$ 1,069	\$ 40		\$ 4,863	\$ 326	\$ 500				\$ 6,798
DD Respite Care	91701				\$ 196		\$ 163				\$ 359
Hospital Liaison	93160	\$ 38								\$ 4,352	\$ 4,390
Program Admin-DD	91210				\$ 401		\$ 931				\$ 1,332
Program Admin-CC&T	93210										\$ -
Program Admin-CSS-MI	93211	\$ 687									\$ 687
Residential Homes	91466/91502									\$ 1,246	\$ 1,246
Program Admin-DD Day Program	91354/91356										\$ -
DD Day Program	91354/91356				\$ 127	\$ 18,033					\$ 18,160
DD Day Program	91353						\$ 18			\$ 4,850	\$ 4,868
ACT-South	83290							\$ 6,478			\$ 6,478
ACT-North	93290	\$ 79									\$ 79
Clubhouse-South	83345							\$ 2,282			\$ 2,282
Clubhouse-North	93345								\$ 9,167		\$ 9,167
Supported Employment	93370	\$ 392							\$ 106		\$ 498
Supportive Housing	93610								\$ 792		\$ 792
Older Adult Services	95825/95921	\$ 540									\$ 540
Prevention	95821	\$ 13									\$ 13
Decisions to Actions	96000/96001			\$ 157							\$ 157
		\$ 6,904	\$ 2,917	\$ 7,253	\$ 7,178	\$ 18,418	\$ 6,904	\$ 11,514	\$ 10,065	\$ 104,749	\$ 175,902

Summary:		
<u>Residential</u>		
Residential Homes (contracted)	\$ 1,246	
DD Respite Care	\$ 359	
Supportive Housing	\$ 792	
Crisis Residential	\$ 136	2,533
<u>Skill Building & Day Support Services</u>		
DD Day Program	\$ 23,028	
PSR Clubhouse-North/South	\$ 11,450	
Supported Employment	\$ 498	34,976
<u>Clinical Services</u>		
DD Clinical	\$ 1,937	
MIA/MIC Outpatient	\$ 1,474	
Psychiatric	\$ 5	3,416
<u>Support Services</u>		
DD Supports Coordination/CSM	\$ 6,798	
MIA Casemanagement	\$ 15,425	
Assertive Comm Trx-North/South	\$ 6,557	
MIC Case Management	\$ 875	29,656
<u>Other Support Services</u>		
Older Adult Services	\$ 540	
Wrap Around		
Decisions to Actions	\$ 157	697
<u>Administrative Services</u>		
Board Administration	\$ 28,203	
Program Administration-All	\$ 2,019	
Hospital Liaison	\$ 4,390	
Psychiatric Administration (see medical director breakdown)	\$ 0	
Prevention/Homeless	\$ 13	34,625
<u>Medicaid Managed Care Administration</u>		
Northern Affiliation	\$ 70,000	
Less: Northeast/Ausable Valley GF/ABW MI Child Portion)		\$ 70,000
		\$ 175,902

North Country Community Mental Health Line Items Charged Directly to Each Reporting Unit

The following are expenditure line items charged directly to each reporting unit:

- Salaries & Wages: Includes staff wages. Secretarial costs are charged directly to the benefiting reporting units.
- Fringe Benefits: Includes health insurance, life insurance, long term disability, retirement, FICA and FICA alternative.
- Contractual (see Contracted Services section)
- Pharmacy/Injection Supplies
- Insurance-Unemployment
- Travel: Includes mileage, conference related expense (mileage, meals, and lodging), consumer travel, and contractors mileage reimbursement.
- Transportation: Includes public transportation to and from day services.
- Advertising
- Miscellaneous: Includes association dues and other miscellaneous dues, board per diems, cash match grants, and other rolled up accounts.

North Country Community Mental Health Contracted Services

North Country Community Mental Health purchases the following services from various subcontractors.

- **Community Inpatient:** North Country Community Mental Health-Northern Affiliation contracts with various local community hospitals throughout the state. The Affiliation adjudicates all claims. They pay the Medicaid claims. The indigent claims are forward to the affiliate boards for payment.
- **Residential:** North Country Community Mental Health contracts all residential services to the DD and MIC population and most services to the MIA population. They hold contracts with four large local contract providers and many small AFC type contract providers. They also hold contracts for a few placements outside the service area. Some of these out of service area providers are small and some are large.
- **Skill Building & Day Services:** North Country contracts five local day program providers. They also hold small contracts with other providers.
- **Clinical Services:** North Country Community Mental Health contracts with several local psychiatrists. They also contract for many DD clinical services and some nursing. Home-based services are also contracted through Northern Family Intervention Services.
- **Support Services:** North Country Community Mental Health contracts with other providers of case management and clinical services for individuals placed outside the service area.
- **Other Support Providers:** North Country Community Mental Health holds small contracts with four providers to service elderly individuals. These services are billed to the Alzheimer's grant.

North Country also contracts with other small service providers for imaging records, respite care, temporary employment services, etc.

Contracted services expenditures are split between Medicaid and all other funding sources based upon a "pro rata" basis of the total. The agency bases the Medicaid /other funding split on "net charges" for each funding stream (Medicaid/GF/ABW/MI Child/other) as a percentage of the total charges for each reporting unit.

During "Phase 1" these costs are all reported as Direct Services. The following pages give a detail breakdown on direct contractual services by program type.

North Country Community Mental Health
Contracted Services

	MIA Contractual	MIC Contractual	DD Contractual	Contract Community Inpatient	Other Contract	Contract- Imaging	Total Contractual Expense	Medicaid	GF and Carry Forward	MI Child	ABW	All Other	Total-Funding Sources
Provider Operations													
Direct Services													
Inpatient Programs													
MIA State Inpatient (93050)	739,600						739,600		609,600			130,000	739,600
Hospital Transportation (93150)				67,000			67,000		60,300			6,700	67,000
MIA Community Inpatient Indigent (93151)				430,000			430,000		342,000		50,000	38,000	430,000
MIC State Inpatient (94050)		29,592					29,592		25,208			4,384	29,592
Subtotal-Community Inpatient	739,600	29,592	-	497,000	-	-	1,266,192	-	1,037,108	-	50,000	179,084	1,266,192
Percent of Revenue							Medicaid	-	All Other				
							All Other	0.0%	100.0%				
Residential Services													
DD Residential Services							-						
Arborlight (81520)			315,038				315,038	334,175	4,301			1,599	340,075
Maple (81521)			202,967				202,967	204,467	4,500				208,967
Monroe (81522)			285,387				285,387	290,987				2,800	293,787
Rivershore (81523)			331,880				331,880	342,800	7,026			2,250	352,076
Westwood (81524)			310,033				310,033	325,570	9,759				335,329
Clearwater (81525)			339,135				339,135	361,658	4,877			1,100	367,635
North Birch (81526)			341,327				341,327	274,236	15,891			73,200	363,327
North Limits (81527)			365,746				365,746	316,951	60,795				377,746
Bell (81529)			23,880				23,880	23,880	1,200				25,080
Beacon Services (81530)			236,155				236,155	192,325	44,055				236,380
GT Comm Lvg (81531)			37,258				37,258	37,258					37,258
Lighthouse (81532)			186,978				186,978	86,365	100,613				186,978
Elder 1 SIP (81618)			115,176				115,176	113,892	1,284				115,176
Elder III SIP (81619)			99,528				99,528	99,432	96				99,528
Kresnak (81620)			242,455				242,455	210,510	26,745			20,800	258,055
Residential-Type A (91450)			852,050				852,050	770,930	72,781			16,739	860,450
Charlevoix House (91451)			72,483				72,483	72,483					72,483
Pinehaven Red (91453)			277,280				277,280	281,880				2,600	284,480
Pinehaven Green (91454)			279,870				279,870	284,117	2,953				287,070
White Pines (91455)			283,818				283,818	298,168				1,300	299,468
Brackenwood (91456)			278,655				278,655	296,110	1,245				297,355
Harrison (91458)			307,237				307,237	315,204	2,033			10,800	328,037
Cleveland (91459)			306,444				306,444	320,044				3,800	323,844
Clarke Street (91463)			200,174				200,174	207,539	1,785			500	209,824
Bay Woods (91466)			351,340				351,340	368,035	9,104			200	377,339
Bay Springs (91468)			281,146				281,146	276,900	21,946				298,846
Candlewood (91501)			305,361				305,361	310,361	1,200				311,561
Springridge (91502)			298,380				298,380	302,125	3,052				305,177
Autumnview (91503)			329,610				329,610	341,794	5,816				347,610
Winterlake (91504)			301,226				301,226	316,961	2,965			400	320,326
DD Self Determination (91610)			737,524				737,524	733,824				3,700	737,524
SIP Hourly (91612)			780,763				780,763	780,763					780,763
Meecher (91613)			140,641				140,641	137,117	3,524				140,641
West Street (91615)			142,199				142,199	129,399	13,500				142,899
Roger's Home (Meecher II) (91617)			186,367				186,367	186,367					186,367
Mapleleaf (91621)			19,643				19,643	19,643					19,643
Wetzel Lake (91622)			152,125				152,125	149,625	2,500				152,125
DD Respite Care (91701)			114,788				114,788		210,235			-	210,235
MIA Residential Services													-
MIA Residential (93450)	927,153						927,153	776,855	97,298		53,000		927,153
MIA Residential-OBRA (93452)	16,899						16,899	14,959	1,690			250	16,899
Supportive Housing (93610)								73,134	25,180		6,000	2,798	107,112
Supportive Housing Block (93611)												33,809	33,809

North Country Community Mental Health
Contracted Services

	MIA Contractual	MIC Contractual	DD Contractual	Contract Community Inpatient	Other Contract	Contract- Imaging	Total Contractual Expense	Medicaid	GF and Carry Forward	MI Child	ABW	All Other	Total-Funding Sources
Supportive Housing Bridge (93612)									15,375			9,500	24,875
Housing Assistance Grant (93620)												6,300	6,300
MIA Crisis/Respite Res (93458)	12,000				500		12,500	326,544	295,530		53,000	8,700	683,774
MIC Residential Services													-
MIC Residential (94450)		235,500					235,500	15,500	220,000				235,500
MIC Respite (94701)		33,458					33,458		42,297				42,297
Subtotal-Residential Services	956,052	268,958	10,432,067	-	500	-	11,657,577	11,320,887	1,333,151	-	112,000	203,145	12,969,183
Percent of Revenue								Medicaid All Other	87.3% 12.7%				
								10,175,977 1,481,600					
Skill Building & Day Support Services													-
DD Skill Building & Day Support Services													-
Grand Traverse Industries (81345)			429,175				429,175	407,849	16,493			4,833	429,175
Bergmann Center (91342)			523,349				523,349	499,327	21,620			2,402	523,349
Crossroads Industries (91343)			584,824				584,824	562,016	20,527			2,281	584,824
Straits Area Services (91344)			688,607				688,607	653,901	31,235			3,471	688,607
Other Contract Day Services (91353)			70,341				70,341	99,874					99,874
DD Day Prgm (91354/91356)								852,657				1,000	853,657
Day Services Alternatives/Supp Employment (91365)			250,000				250,000	247,500	2,250			250	250,000
MIA Skill Building & Day Support Services													-
PSR Clubhouse-South (83345)	300				400		700	289,030	59,332		1,300	13,592	363,254
PSR Clubhouse-North (93345)	7,400						7,400	346,433	121,434		25,000	23,343	516,210
Beacon Center Peer Directed (93347)	114,818						114,818	94,610	18,187			2,021	114,818
Supported Employment (93370)								27,272	28,558		6,000	3,174	65,004
Subtotal-Skill Building & Day Support Services	122,518	-	2,546,296	-	400	-	2,669,214	4,080,469	319,636	-	32,300	56,367	4,488,772
Percent of Revenue								Medicaid All Other	90.9% 9.1%				
								2,426,420 242,794					
Clinical Services, Including Home Based Services													-
DD Clinical Services (91241/91251)	-	-	106,072	-	2,500	3,500	112,072	848,209	51,089	448	-	11,655	911,401
MIA/MIC Outpatient Services (93241/93261/93274/93630)	11,300	-	-	-	7,000	28,300	46,600	1,282,709	1,325,335	23,000	127,000	269,837	3,027,881
Psychiatric Services (93270)	290,257						290,257	258,585	301,992	2,701	26,107	44,765	634,150
Home Based Services (NFIS) (94573)		385,792					385,792	345,659	33,133	7,000			385,792
Subtotal Clinical Services, Including Home Based	301,557	385,792	106,072	-	9,500	31,800	834,721	2,735,162	1,711,549	33,149	153,107	326,257	4,959,224
Percent of Revenue								Medicaid All Other	55.2% 44.8%				
								460,374 374,347					
Support Services													-
DD Supports Coor (91280)			12,200		500	5,000	17,700	1,177,918	79,926	300		12,567	1,270,711
MIA Case Management (93280)	22,575				5,000	2,500	30,075	497,533	252,596		15,000	46,167	811,296
Assertive Community Treatment-South (83290)	1,300				-	1,200	2,500	253,742	114,321		13,300	62,704	444,067
Assertive Community Treatment-North (93290)	353					1,600	1,953	366,709	87,732		5,000	50,548	509,989
MIC Case Management (94280/94281)							-	203,079	4,925			547	208,551
Subtotal-Support Services	24,228	-	12,200	-	5,500	10,300	52,228	2,498,981	539,500	300	33,300	172,533	3,244,614
Percent of Revenue								Medicaid All Other	77.0% 23.0%				
								40,226 12,002					

North Country Community Mental Health
Contracted Services

	MIA Contractual	MIC Contractual	DD Contractual	Contract Community Inpatient	Other Contract	Contract- Imaging	Total Contractual Expense	Medicaid	GF and Carry Forward	MI Child	ABW	All Other	Total-Funding Sources
Other Support Services													-
Other Support Services-DD													-
DD RICC (91285)					100		100					5,844	5,844
DD RICC (91286)					600		600					5,844	5,844
DD Child Waiver (84800)			300				300					300	300
Other Support Services-MIA							-						-
Older Adult Services (95825/95921/95923)	1,800					1,000	2,800	74,625	29,981			76,731	181,337
Alzheimers Grant (95851)					79,986		79,986					80,600	80,600
Other Support Services-MIC							-						-
Wrap Around (94801)							-		18,427			9,047	27,474
PMTO (95830)							-		26,550			2,950	29,500
Decisions to Actions (96000/96001)					2,100		2,100		67,473			78,924	146,397
Subtotal Other Support Services	1,800	-	300	-	82,786	1,000	85,886	74,625	142,431	-	-	260,240	477,296
Percent of Revenue								Medicaid All Other	13,428 72,458	Medicaid 15.6%	All Other 84.4%		
Total-Direct Provider Services	2,145,755	684,342	13,096,935	497,000	98,686	43,100	16,565,818	20,710,124	5,083,375	33,449	380,707	1,197,626	27,405,281
Medicaid Percentage of Total Revenue*													75.57%
All Other Percentage of Total Revenue*													24.43%

*For all operational line items

	Medicaid	All Other	Total-All
Inpatient Programs	-	1,266,192	1,266,192
Residential Services	10,175,977	1,481,600	11,657,577
Skill Building & Day Support Services	2,426,420	242,794	2,669,214
Clinical Services, Including Home Based Services	460,374	374,347	834,721
Support Services	40,226	12,002	52,228
Other Support Services	13,428	72,458	85,886
Total-All	13,116,425	3,449,393	16,565,818

**North Country Community Mental Health
Direct Services**

Provider Operations (CMHSP)	Inpatient Services	Residential Services	Skill-Building & Day Support Services	Clinical Services	Support Services	Other Support Services	Subtotal- Provider
Budgeted Expenditures							
Salaries & Wages	\$ -	\$ 535,244	\$ 980,889	\$ 2,498,927	\$ 1,786,070	\$ 203,204	\$ 6,004,334
Fringe Benefits	-	194,687	337,428	903,706	692,034	64,025	2,191,880
Contractual Services	1,266,192	11,657,577	2,669,214	834,721	52,228	85,886	16,565,818
Supplies	-	41,422	72,395	65,548	42,100	15,368	236,833
Pharmacy/Injectables	-	16,075		93,500	114,150		223,725
Rent-Building	-	416,013	106,049	185,377	153,138	11,133	871,710
Utilities	-	13,420	25,344	19,385	25,222	3,956	87,327
Repair & Maintenance-Building	-	13,604	14,634	29,947	23,830	3,892	85,907
Repair & Maintenance-Equipment	-	4,508	8,083	37,450	30,736	2,126	82,903
Repair & Maintenance-Vehicle	-	7,822	28,033	5,764	44,366	993	86,978
Rent-Equipment	-	1,542	3,364	22,281	19,987	1,602	48,776
Insurance-Liability/Doctors	-	10,034	17,652	48,530	33,698	3,200	113,114
Insurance-Workers Comp	-	10,264	18,059	34,367	30,380	3,273	96,343
Insurance-Unemployment	-	9,617	22,319	16,272	14,495	2,253	64,956
Communications	-	8,154	21,094	39,959	40,033	3,958	113,198
Travel/Conference	-	11,421	16,756	69,757	54,712	64,747	217,393
Vehicle Gasoline	-	6,619	33,194	4,391	37,571	830	82,605
Transportation	-	-	30,833	1,400	2,900		35,133
Advertising	-	2,000	2,800	8,323	5,900	1,600	20,623
Miscellaneous	-	500	22,750	13,369	2,400	1,300	40,319
Equipment	-	6,127	22,907	22,834	9,009	3,253	64,130
Depreciation	-	2,533	34,975	3,416	29,655	697	71,276
							-
Total	\$ 1,266,192	\$ 12,969,183	\$ 4,488,772	\$ 4,959,224	\$ 3,244,614	\$ 477,296	27,405,281
Less: Contractual (reported on separate line)	\$ 1,266,192	11,657,577	2,669,214	834,721	52,228	85,886	16,565,818
	<u>\$ -</u>	<u>\$ 1,311,606</u>	<u>\$ 1,819,558</u>	<u>\$ 4,124,503</u>	<u>\$ 3,192,386</u>	<u>\$ 391,410</u>	<u>\$ 10,839,463</u>
Budgeted Revenue							
Medicaid	\$ -	\$ 1,144,910	\$ 1,654,049	\$ 2,274,788	\$ 2,458,755	\$ 61,197	\$ 7,593,699
General Fund and All Other	-	166,696	165,509	1,849,715	733,631	330,213	3,245,764
Total	<u>\$ -</u>	<u>\$ 1,311,606</u>	<u>\$ 1,819,558</u>	<u>\$ 4,124,503</u>	<u>\$ 3,192,386</u>	<u>\$ 391,410</u>	<u>\$ 10,839,463</u>

Northern Affiliation (PIHP)

Prime Subcontracts							
Ausable Valley CMH (see cost allocation plan for Ausable Valley CMH)							\$ 15,745,869
Northeast Michigan CMH (see cost allocation plan for Northeast Michigan CMH)							7,413,974
Northern Michigan Substance Abuse subtotal							\$ 23,774,623
Other Contractual-Community Inpatient							1,454,851
Total-Affiliation							<u>\$ 25,229,474</u>

North Country Community Mental Health Administrative Services

North Country Community Mental Health Administrative Services for the Provider Operations of the Agency include Board Administration, Program Administration, Hospital Liaison, Psychiatric Administration, and Prevention Indirect. The following describes each type of Administration.

Board Administration

Board Administration includes coordination and oversight of all agency functions including Board activities, public relations and recipient rights. Board Administration also includes the following:

- Administrative Services, which oversees human resources, safety, contract management, and data systems and analysis.
- Finance, which is responsible for budgeting, audit, internal controls, general ledger maintenance, accounts payable, accounts receivable including reimbursement, payroll, fixed assets, and financial risk.

Both the Finance Department and the Human Resources Department provide services to both the Northern Affiliation (Medicaid Managed Care) and the Provider Operations of North Country Community Mental Health. Services provided by Human Resources are allocated to the Affiliation and Provider based on the number of employees in each Department. Services provided by Finance are allocated in the following manner:

- Accounts payable is based on a one month study of the number of invoices paid for the Affiliation and Provider Operations.
- Payroll is based on the number of employees in each department.
- Accounting Supervisor is based on the FTE levels of accounting staff supervised by the Accounting Supervisor that are allocated to the Provider Operations and Affiliation.
- Finance Director is based on FTE levels of accounting staff supervised by the Finance Director that are allocated to the Provider Operations and Affiliation.
- Financial Analyst is based on time study.

The Financial Analyst works primarily for the Northern Affiliation, however will provide assistance to the Provider Operations on an “as needed” basis.

Program Administration

Program Administration is under the supervision of the Director of North Country Community Mental Health.

DD Program Administration is responsible for the oversight of DD services including inpatient, clinical, supports coordination/case management, residential, and day services. The DD Day Program Supervisor directly reports to the DD Program Coordinator and is responsible for the oversight of skill building and day supports services. The DD Day Program Supervisor is a second line supervisor.

Community Consultation and Treatment Program Administration is responsible for the oversight of MI Adult and MI Child services including child state and community inpatient, child residential services, home based services to children, case management services to children, clinical outpatient services to both MI Adult and MI Children, psychiatric services coordination, and emergency services coordination.

North Country Community Mental Health, Administrative Services

Community Support Program Administration is responsible for the oversight of MI Adult services including MI Adult state inpatient and community inpatient, residential services, case management services, clubhouse services, peer directed services, assertive community treatment, older adult services, and hospital liaison.

Hospital Liaison

The Hospital Liaison Care Manager manages state and community hospital utilization.

Psychiatric Administration

The Medical Director provides Medical oversight for the Provider Operations of the Agency. The Medical Director supervises Psychiatric services, is a member of the Leadership Team, Risk Management Team, and other committees. The Medical Director is charged 30% to Administrative Services; allocated via time study.

Prevention Indirect

This program provides collaborative services with other coordinating agencies. The Prevention Coordinator also is responsible for the Homeless grant.

PIHP Managed Care Administration

Northern Michigan Community Mental Health is also the PIHP for Managed Care Services to the Medicaid population. The Northern Affiliation is responsible for managing the Medicaid dollars received from the Department of Community Health. The Northern Affiliation provides Access, Inpatient Claims Management, including adjudication of all inpatient claims, Information Services, Finance and Human Resources, Member Services, Compliance, and Provider Network Management. Finance and Human Resources costs are allocated as mentioned above. Most Affiliation MCO Administration is charged to Medicaid, with the exception of some Access Center charges, inpatient claims adjudication, and standards setting dues. General Fund, Adult Benefit Waiver, MI Child, and indigent portions of these costs are billed back to Prime Sub-Contract Boards. The budget amount of these non-Medicaid costs is \$91,682 for subcontractors Ausable Valley and Northeast Michigan Community Mental Health. The non-Medicaid portion for North Country Community Mental Health is \$102,508.

The Affiliation also is also responsible for coordinating the Improving Practices Leadership Team and is responsible for managing this grant.

North Country Community Mental Health
Board Administration-Provider

Provider Administrative Costs	Board Administration			Administrative Services	Human Resources	Total
	All Other*	Finance				
Salaries & Wages	\$ 294,802	\$ 372,532		\$ 305,535	\$ 73,336	\$ 1,046,205
Fringe Benefits	68,086	124,450		103,504	38,492	334,532
Contractual Services	77,485					77,485
Supplies	25,276	36,217		29,167	7,855	98,515
Rent	17,007	22,900		22,495	4,231	66,633
Utilities	4,389	6,633		4,388	1,611	17,021
Repair & Maintenance-Building	7,638	11,340		8,040	2,658	29,676
Repair & Maintenance-Equipment	5,890	8,506		6,666	1,878	22,940
Repair & Maintenance-Vehicle	4,535	1,830		2,492	212	9,069
Rent-Equipment	2,696	3,881		3,075	852	10,504
Insurance-Liability	3,951	5,635		4,609	1,209	15,404
Insurance-Workers Comp	4,041	5,765		4,715	1,237	15,758
Insurance-Unemployment	1,795	2,561		2,094	550	7,000
Communications	97,608	7,744		7,363	1,475	114,190
Travel/Conference	28,053	8,926		18,700	4,293	59,972
Vehicle Gasoline	2,597	1,342		1,712	177	5,828
Advertisement	38,000				-	38,000
Miscellaneous (dues, per diem,etc)	45,296				-	45,296
Equipment Purchase	67,502					67,502
Depreciation	19,644	3,036		5,401	122	28,203
Total	\$ 816,291	\$ 623,298		\$ 529,956	\$ 140,188	\$ 2,109,733

*Includes Director, Executive Assistant, and Receipts Rights. Also includes all expenditures of the Board.

North Country Community Mental Health
Total Administrative Costs

Provider Administrative Costs	Board Administration	DD Day Program Administration	DD Program Administration	MIA/MIC CC&T Program Administration	MIA CSS-MI Program Administration	Hospital Liaison	.30 FTE Medical Director	Prevention Indirect/Homeless	Total All
Salaries & Wages	\$ 1,046,205	\$ 44,954	\$ 193,830	\$ 114,773	\$ 77,115	\$ 52,108	\$ 47,827	\$ -	\$ 1,576,812
Fringe Benefits	334,532	18,846	69,621	43,218	28,268	21,771	10,499		526,755
Contractual Services	77,485							47,848	125,333
Supplies	98,515	917	3,455	1,998	1,622	1,622	924	1,166	110,219
Rent	66,633	2,983	14,489	8,342	2,815	2,815	1,997	150	100,224
Utilities	17,021	379	905	667	1,073	1,073	183	57	21,358
Repair & Maintenance-Building	29,676	844	2,015	823	1,277	1,277	250	25	36,187
Repair & Maintenance-Equipment	22,940	1,000	3,335	1,238	531	531	366	31	29,972
Repair & Maintenance-Vehicle	9,069		2,615	-	1,193	3,066	-	23	15,966
Rent-Equipment	10,504	598	2,399	1,359	881	750	108	-	16,599
Insurance-Liability	15,404	658	2,456	1,305	805	805	3,362	33	24,828
Insurance-Workers Comp	15,758	674	2,513	1,335	823	823	306	34	22,266
Insurance-Unemployment	7,000	288	774	364	352	352	86		9,216
Communications	114,190	396	3,805	1,401	500	536	591	27	121,446
Travel/Conference	59,972	1,606	7,603	4,355	1,623	1,542	1,689	2,744	81,134
Vehicle Gasoline	5,828		1,829		995	2,055			10,726
Advertisement	38,000								38,000
Miscellaneous (dues, per diem,etc)	45,296						1,831		47,127
Equipment Purchase	67,502	184	2,315	500		110	250	287	71,148
Depreciation	28,203		1,332		687	4,390		13	34,625
Total	\$ 2,109,733	\$ 74,327	\$ 315,291	\$ 181,678	\$ 120,560	\$ 95,626	\$ 70,269	\$ 52,438	\$ 3,019,941

Revenue
Medicaid \$ 2,282,169
Non Medicaid-All Other \$ 737,772

Affiliation MCO Costs	Managed Care Administration	GF/ABW/MI Child Charges to Affiliates	Net Managed Care Administration	Improving Practices Leadership Team	Total	Medicaid	All Other	Total Revenue
Salaries & Wages	\$ 824,618	\$ (54,589)	\$ 770,029	\$ 34,902	\$ 804,931			
Fringe Benefits	281,568	(16,992)	264,576	25,075	\$ 289,651			
Contractual Services	169,539	(12,773)	156,766	2,500	\$ 159,266			
Supplies	29,458	(797)	28,661	4,100	\$ 32,761			
Rent	48,000	(2,675)	45,325		\$ 45,325			
Utilities	2,286	(105)	2,181		\$ 2,181			
Repair & Maintenance-Building	10,554	(466)	10,088		\$ 10,088			
Repair & Maintenance-Equipment	6,600	(506)	6,094		\$ 6,094			
Repair & Maintenance-Vehicle	1,256	-	1,256		\$ 1,256			
Rent-Equipment	7,500	(221)	7,279		\$ 7,279			
Insurance-Liability	8,958	(637)	8,321		\$ 8,321			
Insurance-Workers Comp	9,164		9,164		\$ 9,164			
Insurance-Unemployment	6,000		6,000		\$ 6,000			
Communications	13,000	(336)	12,664		\$ 12,664			
Travel/Conference	40,739		40,739	4,580	\$ 45,319			
Vehicle Gasoline	1,047		1,047		\$ 1,047			
Advertisement	2,000	(59)	1,941		\$ 1,941			
Miscellaneous (dues, per diem,etc)	19,000	(1,525)	17,475		\$ 17,475			
Equipment Purchase	15,000		15,000		\$ 15,000			
Depreciation	70,000		70,000		\$ 70,000			
Total	\$ 1,566,287	\$ (91,681)	\$ 1,474,606	\$ 71,157	\$ 1,545,763	1,372,097	173,665	1,545,762

All Other Administration	
Provider	\$ 737,772
PIHP	173,665
	\$ 911,437

Medicaid Administration-Subcontractors			
Northeast Michigan CMH (see cost allocation plan submitted by Northeast Michigan CMH)		\$ 2,027,491	2,027,491
Ausable Valley CMH (see cost allocation plan submitted by Ausable Valley CMH)		1,552,189	1,552,189
Substance Abuse Services		76,919	76,919
Subtotal		\$ 3,656,599	3,656,599
Total		\$ 5,202,362	5,028,696

Provider	\$ 2,282,169
PIHP	5,028,696
	\$ 7,310,865

North Country Community Mental Health Allocation to Funding Sources

Direct Service Costs for North Country Community Mental Health are budgeted expenses by funding source (Medicaid, General Fund, Adult Benefit Waiver, and Other).

Budgeted expenditures for each reporting unit (program) are split between Medicaid and all other funding sources based upon a “pro rata” basis of total. The Agency bases the Medicaid/other funding split on “net charges” for each funding stream; Medicaid, General Fund, Adult Benefit Waiver, MI Child, Other as a percentage of the total charges for each reporting unit (program).

NCCMH has three distinct groups of Program Administration; DD, Community Consultation and Treatment, and Community Support Services. This administrative expense is allocated based on the total expense within the program groupings prior to allocating all expenses to various funding streams.

Board Administration and Prevention-Indirect are allocated to each funding stream based on the funding streams percent of the total expenditures.

Local Match Contribution to State Medicaid and the Quality Assurance Assessment Program are allocation to Direct and Administrative based on the respective total of each to the total costs.

**North Country Community Mental Health
Allocation of Administrative and Direct Costs by Funding Source**

Provider Run Programs	Direct Costs			Administrative Costs			
	Total Cost	Cost	Medicaid	Other Funding	Cost	Medicaid	Other Funding
Inpatient (all contract)	1,405,721	1,266,192	-	1,266,192	139,529	-	139,529
Residential	14,398,330	12,969,183	11,320,887	1,648,296	1,429,147	1,247,515	181,632
Skill Building & Other Day	4,983,415	4,488,772	4,080,469	408,303	494,643	449,651	44,992
Clinical Services	5,505,709	4,959,224	2,735,162	2,224,062	546,485	301,404	245,081
Support Services	3,602,156	3,244,614	2,498,981	745,633	357,542	275,377	82,165
Other Services	529,892	477,296	74,625	402,671	52,596	8,223	44,373
Subtotal-Provider Run	30,425,222	27,405,281	20,710,124	6,695,157	3,019,941	2,282,169	737,772
Less Other Subcontracts	18,391,298	16,565,818	13,116,425	3,449,393	1,825,480	1,445,372	380,108
Provider Run Net of Other Subcontracts	12,033,924	10,839,463	7,593,699	3,245,764	1,194,461	836,797	357,664
Local Match Contributin to State Medicaid	431,035						
Total Costs-Provider Run (30,425,222 + 431,035)	30,856,257						

Northern Affiliaiton (PIHP)	Direct Costs			Administrative Costs			
	Total Cost	Cost	Medicaid	Other Funding	Cost	Medicaid	Other Funding
Prime Subcontractors							
Northeast MI CMH	17,773,360	15,745,869	15,745,869	-	2,027,491	2,027,491	-
Ausable Valley CMH	8,966,163	7,413,974	7,413,974	-	1,552,189	1,552,189	-
Northern MI Substance Abuse	691,699	614,780	614,780	-	76,919	76,919	-
subtotal	27,431,222	23,774,623	23,774,623	-	3,656,599	3,656,599	-
Other Subcontracts	1,454,851	1,454,851	1,454,851	-			
Administrative Costs-PIHP	1,545,762				1,545,762	1,372,097	173,665
Subtotal-Affiliation	30,431,835	25,229,474	25,229,474	-	5,202,361	5,028,696	173,665
QAAP	3,341,131						
Total Costs-Northern Affiliation (PIHP) (30,431,835 + 3,341,131)	33,772,966						
Total Costs - All (30,856,257 + 33,772,966)	64,629,223						

Medicaid	Direct	QAAP	
		Distribution	Total
Medicaid-PIHP	7,593,699	476,457	8,070,156
Medicaid-Prime Subcontractors	23,774,623	1,491,708	25,266,331
Medicaid-Other Subcontractors	14,571,276	914,256	15,485,532
Subtotal	45,939,598	2,882,420	48,822,018
	Administrative		
Medicaid-PIHP	836,797	52,504	889,301
Medicaid-Prime Subcontractors	3,656,599	229,429	3,886,028
Medicaid-Other Subcontractors	1,445,372	90,688	1,536,060
Medicaid-Administrative	1,372,097	86,090	1,458,187
Subtotal	7,310,865	458,711	7,769,576
Total-All Medicaid	53,250,463	3,341,131	56,591,594

Non-Medicaid	Direct	Local Contrib.	
		State Medicaid	Total
Non-Medicaid-PIHP	3,245,764	183,924	3,429,688
Non-Medicaid-Other Subcontractors	3,449,393	195,463	3,644,856
Subtotal	6,695,157	379,388	7,074,545
	Administrative		
Non-Medicaid-PIHP	357,664		357,664
Non-Medicaid-Other Subcontractors	380,108		380,108
PIHP Non-Medicaid (IPLT & Access/Claims/Standards Portion)	173,665		173,665
Subtotal	911,437	51,647	963,084
Total-All Non-Medicaid	7,606,594	431,035	8,037,629

Total-All 64,629,223

Michigan Department of Community Health

Section 460 Compliance Report

Direct Service / Administrative Cost Detail Report for the Community Mental Health Service Programs

Non-Medicaid Managed Mental Health Supports and Services

CMHSP: North Country Community Mental Health

Fiscal Year: 2007

Reporting Period: Six Month Report Annual Report (Based on FY07 Budget)

(A) Contractor(s)	Non-Medicaid Direct Service			Non-Medicaid Administration			Non-Medicaid Total Costs			
	(B) CMHSP	(C) Prime Sub-Contractors	(D) Sub-Contract Providers	(E) CMHSP	(F) Prime Sub-Contractors	(G) Sub-Contract Providers	(H) Total Direct Services	(I) Total Administration	(J) Total Costs	(K) Percent Admin.
1. CMHSP PROVIDED	\$ 3,245,764			\$ 911,437			\$ 3,245,764	\$ 911,437	\$ 4,157,201	
2. Prime Sub-Contractor(s)							-	-	-	
3.							-	-	-	
4.							-	-	-	
5.							-	-	-	
6.							-	-	-	
7.							-	-	-	
8.							-	-	-	
9.							-	-	-	
10.							-	-	-	
11.							-	-	-	
12.							-	-	-	
13.							-	-	-	
14.							-	-	-	
15. Sub-Total Prime Sub-Contractor(s)		\$ -			\$ -		\$ -	\$ -	\$ -	
16. Other Sub-Contractor(s)			\$ 3,449,393			Included in Direct for Phase 1	\$ 3,449,393	Included in Direct for Phase 1	\$ 3,449,393	
17. Total without Local Contribution to State Medicaid Match	\$ 3,245,764	\$ -	\$ 3,449,393	\$ 911,437	\$ -		\$ 6,695,157	\$ 911,437	\$ 7,606,594	12%
18. Local Contribution to State Medicaid Match	\$ 183,924		\$ 195,463	\$ 51,647			\$ 379,388	\$ 51,647	\$ 431,035	
19. Total with Local Contribution to State Medicaid Match	\$ 3,429,688	\$ -	\$ 3,644,856	\$ 963,084	\$ -		\$ 7,074,545	\$ 963,084	\$ 8,037,629	

The CMHSP non-Medicaid administrative costs are borne by the 46 CMHSPs when they carry out the responsibilities associated with operating a local public mental health system and administering the direct services provided by them or purchased by them from

Michigan Department of Community Health

Section 460 Compliance Report

Direct Service / Administrative Cost Detail Report for the Prepaid Inpatient Health Plans

Medicaid Managed Specialty Supports and Services Concurrent 1915(b)/(c) Waiver Programs

PIHP: North Country Community Mental Health, Northern Affiliation

Fiscal Year: 2007

Reporting Period: Six Month Report Annual Report (Based on FY07 Budget)

(A) Contractor(s)	Medicaid Direct Service			Medicaid Administration			Medicaid Total Costs			
	(B) PIHP	(C) Prime Sub-Contractors	(D) Providers	(E) PIHP	(F) Prime Sub-Contractors	(G) Providers	(H) Total Direct Services	(I) Total Administration	(J) Total Costs	(K) Percent Admin.
1. PIHP Provided	\$ 7,593,699			\$ 3,654,266			\$ 7,593,699	\$ 3,654,266	\$ 11,247,965	
2. Prime Sub-Contractor(s)										
3. Northeast Michigan CMH		15,745,869			2,027,491		15,745,869	2,027,491	17,773,360	
4. Ausable Valley CMH		7,413,974			1,552,189		7,413,974	1,552,189	8,966,163	
5. Substance Abuse Services		614,780			76,919		614,780	76,919	691,699	
6.							-	-	-	
7.							-	-	-	
8.							-	-	-	
9.							-	-	-	
10.							-	-	-	
11.							-	-	-	
12.							-	-	-	
13.							-	-	-	
14.							-	-	-	
15. Sub-Total Prime Sub-Contractor(s)		\$ 23,774,623			\$ 3,656,599		\$ 23,774,623	\$ 3,656,599	\$ 27,431,222	
16. Other Sub-Contractor(s)			\$ 14,571,276			Included in Direct for Phase 1	\$ 14,571,276	Included in Direct for Phase 1	\$ 14,571,276	
17. Total without Quality Assurance Assessment Tax	\$ 7,593,699	\$ 23,774,623	\$ 14,571,276	\$ 3,654,266	\$ 3,656,599	Included in Direct for Phase 1	\$ 45,939,598	\$ 7,310,865	\$ 53,250,463	13.73%
18. Quality Assurance Assessment Tax	\$ 476,457	\$ 1,491,708	\$ 914,256	\$ 229,282	\$ 229,429		\$ 2,882,420	\$ 458,711	\$ 3,341,131	
19. Total with Quality Assurance Assessment Tax	\$ 8,070,156	\$ 25,266,331	\$ 15,485,532	\$ 3,883,548	\$ 3,886,028		\$ 48,822,018	\$ 7,769,576	\$ 56,591,594	