

C O

Carbon Monoxide Poisoning Facts

Carbon monoxide (CO) poisoning is a leading cause of poisoning-related deaths in the U.S. According to the Centers for Disease Control and Prevention (CDC), unintentional CO poisoning causes more than 100,000 emergency department visits, 14,000 hospitalizations and 400 deaths every year. Learn more about CO poisoning, so you can prevent it.



Be Aware.

CO is a poisonous gas.

You cannot see, taste or smell CO, but it can be deadly when you breathe it in. CO blocks your body from taking in the oxygen it needs.

Fuels give off CO when burned.

CO is a gas found where carbon-based fuels are burned. Some carbon-based fuels are:

- Charcoal.
- Gasoline.
- Kerosene.
- Natural gas.
- Oil.
- Propane.
- Wood.

Anything fuel-burning releases CO.

All fuel-burning appliances and equipment release CO including:

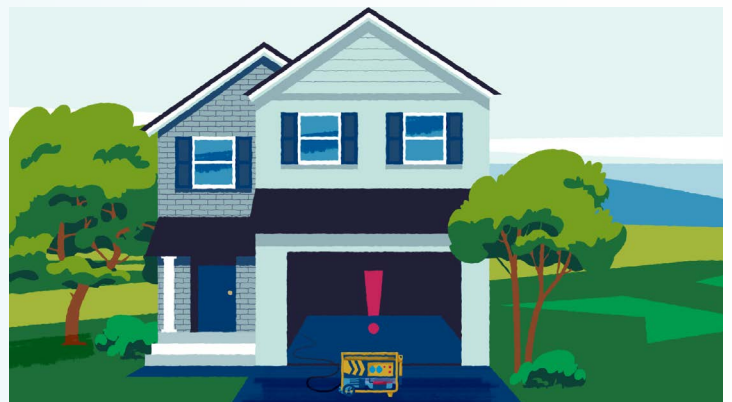
- Vehicles.
- Furnaces or boilers.
- Water heaters.
- Portable generators.
- Boats.
- Charcoal grills.
- Clothes dryers.
- Fireplaces and wood-burning stoves.
- Lawnmowers and lawn equipment.
- Power washers.
- Space heaters.



CO builds up in enclosed and partially enclosed spaces.

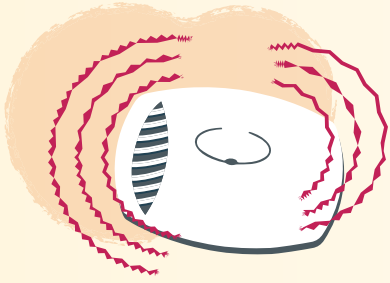
CO can build up in enclosed and partially enclosed spaces, including:

- Houses/buildings.
- Garages.
- Boat cabins.
- Campers.
- Carports.
- Ice houses/shanties.
- Sheds.
- Tented areas/canopies.
- Warehouses.





Stay Prepared.



Install CO detectors.

- Install 10-year lithium battery CO detectors on all levels of your home and near all sleeping areas to alert you of CO. **CO detectors save lives.**
- Test CO detectors monthly or according to the manufacturer's instructions.
- If you do not have a lithium CO detector, replace alkaline batteries twice a year. An easy way to remember is during time changes (spring and fall).
- Replace your CO detector according to the manufacturer's instructions.



Know CO poisoning symptoms.

CO poisoning has flu-like symptoms, including:

- Headache.
- Vomiting.
- Chest tightness.
- Unconsciousness.
- Dizziness.
- Fatigue.
- Confusion.
- Coma.
- Nausea.
- Weakness.

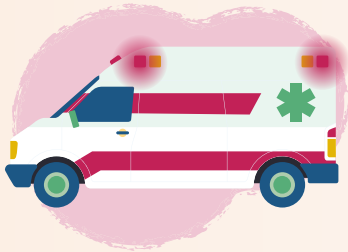
Remember: People who are sleeping or intoxicated might not notice CO poisoning symptoms before it's too late.

Symptoms should not be ignored.

You could DIE within minutes if you do nothing.



Get to Fresh Air.



If you suspect CO poisoning, have symptoms or if your CO detector goes off:

1. Leave the enclosed or partially enclosed space and move to fresh air right away.
2. Call 911.
3. Stay away from the enclosed or partially enclosed space until the fire department tells you it is safe to return, even if you aren't experiencing symptoms.

CO poisoning is preventable.



Be Aware.



Stay Prepared.



Get to Fresh Air.



Learn more about CO poisoning.

Go to Michigan.gov/CarbonMonoxide or scan the QR code.

