
Integrity - Service - Excellence



Former Wurtsmith AFB Community Meeting

January 24, 2013



Overview

- Introduction
- Air Force Civil Engineer Center
- Wurtsmith Cleanup to Date
- What Are PFCs?
- Air Force Policy
- Known PFC Release Sites
- Air Force Investigation
- Locations of PFC Sampling
- Path Forward



Air Force Civil Engineer Center (AFCEC)

- **AFCEC activated on 1 Oct 12 as part of Air Force Civil Engineering Transformation**
- **AFCEC is a new unit consisting of the former Air Force Real Property Agency (AFRPA), Air Force Center for Engineering and the Environment (AFCEE), and Air Force Civil Engineer Support Agency (AFCESA)**
- **BRAC Program Management Division (AFCEC/CIB) maintained responsibility for AF environmental cleanup**



Wurtsmith Cleanup to Date

- **In 1993, 88 active cleanup sites were identified at base closure (fuel spills, solvents, landfills, USTs)**
 - **Today only 16 sites remain open**
- **A primary cleanup strategy has been to prevent groundwater contamination from spreading off base**
- **Township of Oscoda, Oscoda Wurtsmith Airport Authority and U.S. Forest Service received ownership of property when it was deemed suitable for transfer by federal, state regulators**



What Are PFCs?

- **Perfluorinated Chemicals (PFCs) are family of compounds that have historically had many commercial applications**
 - **Gore-Tex, Teflon, fast food wrappers, stain resistant treatments**

- **PFC presence at Site FT-02 (Clark's Marsh) believed to be result of fire fighting material known as Aqueous Film Forming Foams (AFFF)**
 - **Site FT-02 former fire training area from 1958-1991**
 - **Air Force extinguished test fires with AFFF materials**

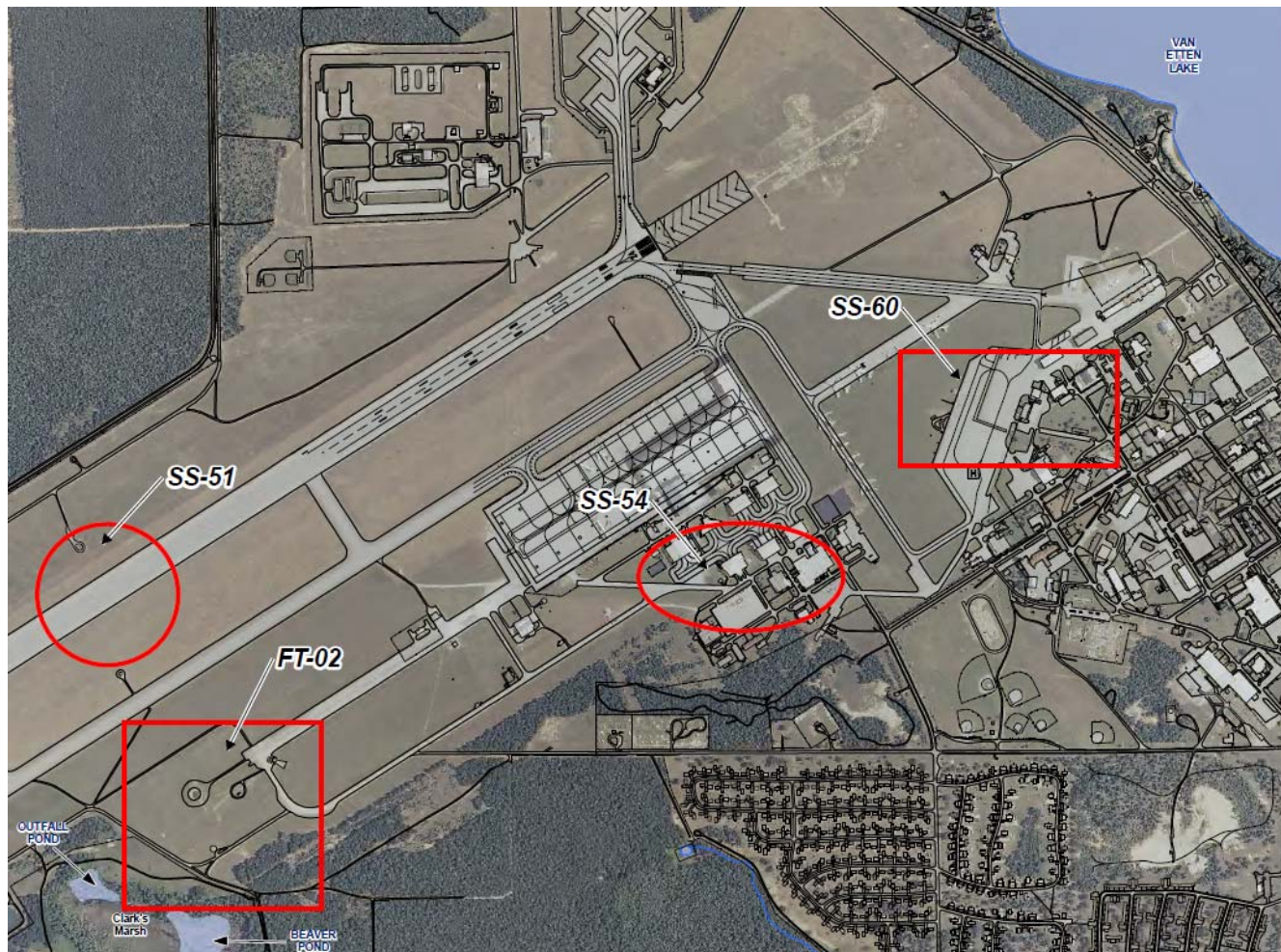


Air Force Policy

- **Under current AF policy, PFCs are classified as an “emerging contaminant” with evolving regulatory standards**
 - **A 3-part process is to be followed:**
 - **Identify, define extent of release of PFCs**
 - **Assess potential human exposure**
 - **Mitigate exposures with interim actions**
- **AFCEC policy will continue to be the protection of human health and the environment**



Known PFC Release Sites





Air Force Investigation

- **May 2012: AFCEC field test results showed no presence of PFCs in soil, sediment, SW samples from landfills**

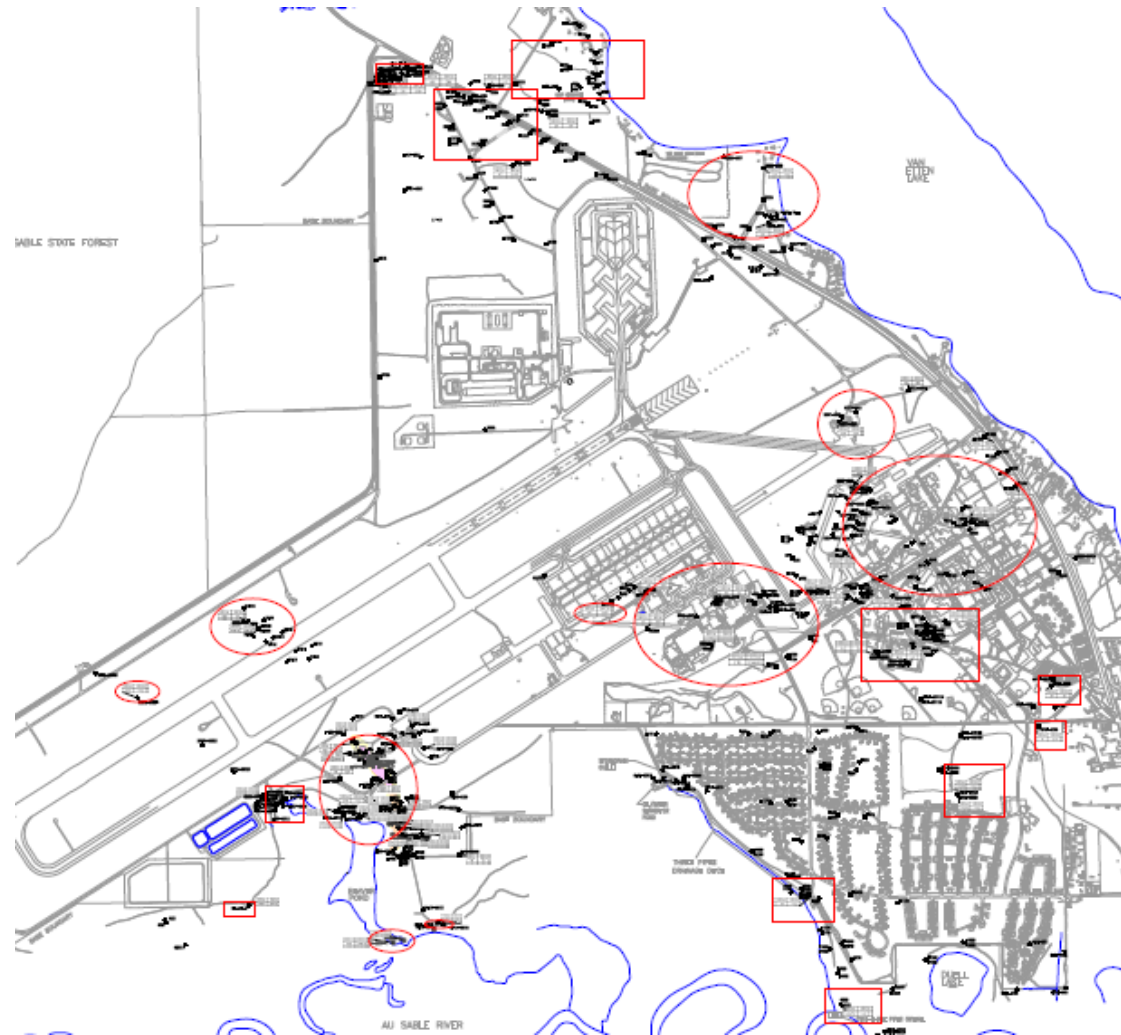
- **November 2012: AFCEC base-wide samples taken**
 - **17 GW, 5 SW, 5 soil, 10 sediment, 2 seep samples taken at, above Clark's Marsh**

 - **50 GW samples taken across base at 25 sites**

 - **Initial assessment of data shows PFCs at each of the known AFFF release sites**



Locations of PFC Sampling



Integrity - Service - Excellence



Path Forward

- **AFCEC already developing next steps**
 - **Funded ATSDR Health Consultation**
 - **Complete Initial Site Investigation (Spring 2013)**
 - **Determine location of exposure potential (Summer/Fall 2013)**
 - **Conduct additional investigation as needed (Summer 2014)**
 - **Conduct interim mitigation project as needed (2014/2015)**

- **AFCEC remains committed to locating source of contamination**

- **AFCEC working with Michigan Department of Community Health (MDCH) and local leadership**

- **AF will continue to keep community informed of progress**



Contact Us

■ AFCEC Public Affairs

- afcec.pa@us.af.mil
- (210) 395-8329

■ AFCEC Web: www.afcec.af.mil

■ Social Media

- www.facebook.com/AirForceCE
- www.youtube.com/user/AFCivilEngineer
- www.flickr.com/photos/airforcece



QUESTIONS?

Integrity - Service - Excellence



AFCEC Organization



AFCEC Director

Director of Staff

Public Affairs

Mission Support

Human Resources

Chief Information Office

Chief Financial Office

Staff Judge Advocate Office

Planning and Integration Directorate

- Strategic enterprise wide planning
- Enterprise-wide output standards
- AFCAMP Investment Plan – IPLS (Budget year) development / integration
- AFAMP Investment Plan (POM) development

Facility Engineering Center of Excellence

- Centralized Design & Construction services for MILCON and O&M funded projects
- Standardized designs for similar facility and infrastructure
- Expertise in all facility engineering disciplines

Energy Directorate

- Facility energy and utility rate negotiation support
- Energy clearinghouse
- Renewable energy focal point

Environmental Center of Excellence

- Planning, program and project validation, prioritization, strategy, technical support & execution for:
 - Compliance
 - Restoration
 - Natural and Cultural Resources
- NEPA Center

Operations Directorate

- Facility operations analysis, standardization support & infrastructure assessment
- Military CFM
- Preventative maint. oversight
- Airfield pavement evaluations & CE Maint, Inspection & Repair Teams

Installations Center of Excellence

- Active Duty Real Estate Transactions, Real Property Asset Management
- Base Realignment and Closure (BRAC) Program
- Enhanced Use Lease Program
- Housing and utility privatization portfolio management

Readiness Directorate

- PRIME BEEF, RED HORSE, Expeditionary Engineering, Fire, EOD, and Emergency Mgmt
- AF Contract Augmentation Program (AFCAP) support
- Reach-back center support
- CE RDT&E

Integrity - Service - Excellence