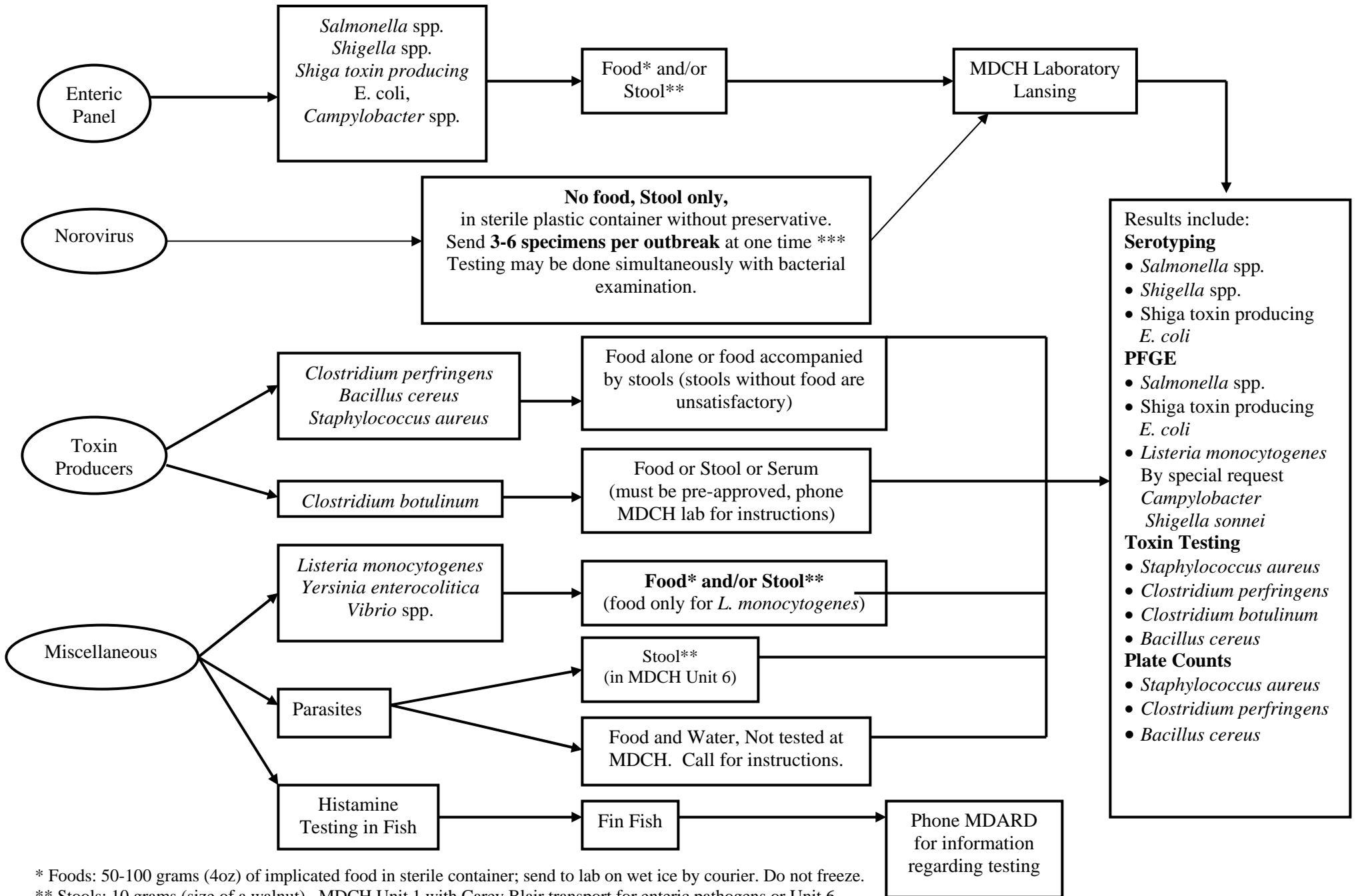


# Specimens for Laboratory Analysis in a Foodborne Outbreak Investigation

## Hypothesis Must be Developed Prior to Submitting Specimens for Examination



\* Foods: 50-100 grams (4oz) of implicated food in sterile container; send to lab on wet ice by courier. Do not freeze.  
 \*\* Stools: 10 grams (size of a walnut). MDCH Unit 1 with Carey Blair transport for enteric pathogens or Unit 6 containing Formalin and ZPVA vials for parasites. Send to lab by courier or mail.  
 \*\*\* Required by laboratory for best use of PCR examination.