

DEFINITION

Burglary-Forced Entry is the unlawful forcible entry of a building or other structure with the intent to commit a theft or felony. This does not apply to motor vehicles or coin boxes.

ANALYSIS

VOLUME

The number of forced entry burglaries committed in Michigan in 2014 was 35,589. This is a reported decrease of 22 percent from 2013 and a 42 percent decrease since 2010.

The largest number of offenses occurred in the month of July. The least amount occurred in February.

RATE

The crime rate for this offense was 359 for every 100,000 persons. In 2013 the crime rate was 462 per 100,000 persons.

CLEARANCES

Law enforcement agencies cleared 3,433 incidents by an arrest or exceptional clearance out of the 35,252 incidents reported. This calculates to a 10 percent clearance rate.

NATURE

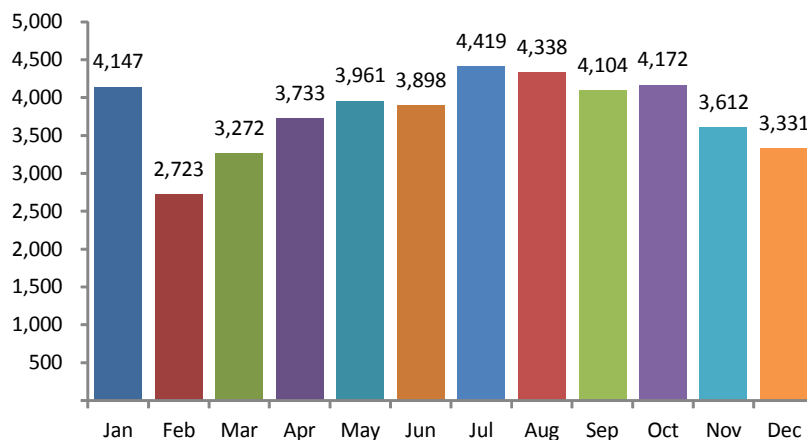
In 2014, these crimes occurred most often (77 percent) at a Residence/Home. Commercial/Office Buildings were burglarized four percent of the time.

The most forced entry burglaries in Michigan for 2014 occurred on Mondays. The least amount of incidents occurred on Sundays.

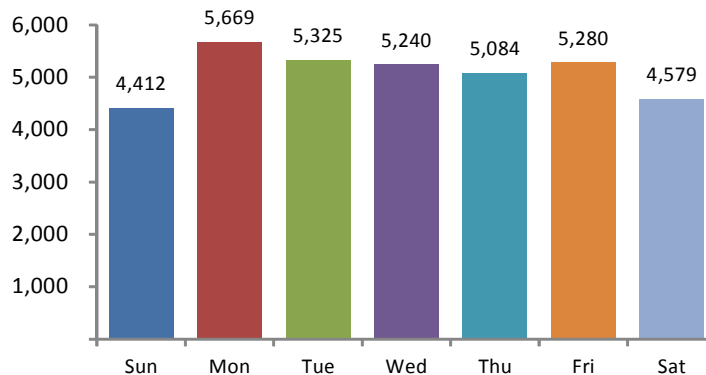
In 50 percent of the incidents reported to law enforcement agencies, the suspect or offender was Unknown. Forty-two (42) percent of the offenders were reported as Males and seven percent were Females.

Eighteen (18) percent of the offenses were committed by White Males while only four percent were committed by White Females. Black Males were involved in 17 percent of these offenses and Black Females were involved in two percent of these offenses.

Offenses by Month

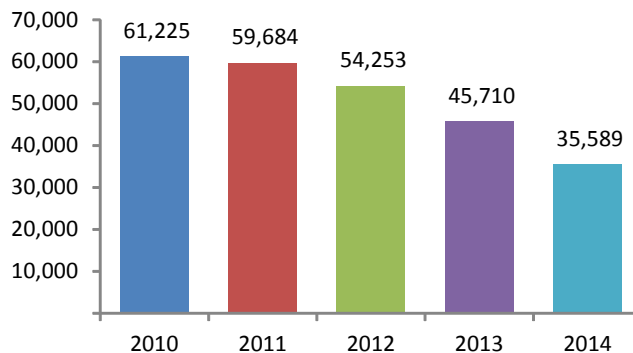


Offenses by Day



5-Year Trend

Number of Offenses



2014 Burglary-Forced Entry Arrests



		Arrests By Age, Sex, and Race											Total
		FEMALE					MALE						
		American Indian/Alaskan Native	Black	Unknown	White	Total	American Indian/Alaskan Native	Asian/Pacific Islander	Black	Unknown	White	Total	
Age Group													
TOTAL JUVENILES	10 & Under	0	0	0	0	0	0	0	3	0	2	5	5
	11-12	0	1	0	2	3	0	1	13	1	14	29	32
	13-14	0	4	3	9	16	0	0	59	7	45	111	127
	15	0	3	1	6	10	7	0	51	3	61	122	132
	16	0	1	2	6	9	0	0	62	4	64	130	139
	Total	0	9	6	23	38	7	1	188	15	186	397	435
TOTAL ADULTS	17	0	2	1	9	12	0	1	110	4	104	219	231
	18	0	10	0	12	22	2	2	144	11	118	277	299
	19	0	10	0	13	23	0	0	128	8	127	263	286
	20	0	6	1	13	20	0	1	86	3	76	166	186
	21	0	5	0	9	14	0	0	77	2	73	152	166
	22	0	7	2	10	19	0	0	62	1	60	123	142
	23	0	6	0	7	13	0	0	65	5	76	146	159
	24	0	5	1	3	9	0	0	54	0	72	126	135
	25-29	1	21	0	58	80	0	2	151	1	276	430	510
	30-34	1	17	1	31	50	0	1	80	4	148	233	283
	35-39	0	10	0	17	27	0	0	58	1	96	155	182
	40-44	0	5	0	10	15	0	0	55	4	78	137	152
	45-49	0	1	1	16	18	0	0	62	1	55	118	136
	50-54	0	2	0	9	11	0	0	50	2	46	98	109
	55-59	0	4	0	2	6	0	0	39	0	23	62	68
	60-64	0	0	0	2	2	0	0	14	1	8	23	25
65 & Above	0	1	0	0	1	0	0	4	0	1	5	6	
Total	2	112	7	221	342	2	7	1,239	48	1,437	2,733	3,075	
Grand Total:	2	121	13	244	380	9	8	1,427	63	1,623	3,130	3,510	



DEFINITION

Burglary-Entry Without Force is the unlawful entry, without force, with the intent to commit a theft or other felony. This does not apply to motor vehicles or coin boxes.

ANALYSIS

VOLUME

The number of entry without force burglaries committed in Michigan in 2014 was 7,440. This is a reported decrease of 13 percent from 2013 and a 30 percent decrease since 2010.

The largest number of offenses occurred in the month of July and the least amount were committed in February.

RATE

The crime rate for this offense was 75 for every 100,000 persons. In 2013, the crime rate was 86 per 100,000 persons.

CLEARANCES

Law enforcement agencies cleared 730 incidents by an arrest or exceptional clearance out of the 7,345 incidents reported. This calculates to a 10 percent clearance rate. In 2013, the clearance rate was also 10 percent.

NATURE

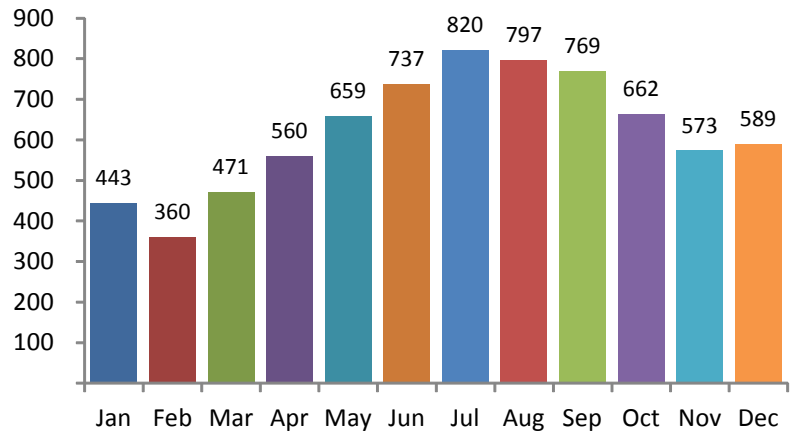
In 2014, these crimes occurred most often (84 percent) at a Residence/Home. Parking Lot/Garage was the location for four percent of the offenses.

Burglaries without force occurred most often on Fridays while the least number occurred on Sundays.

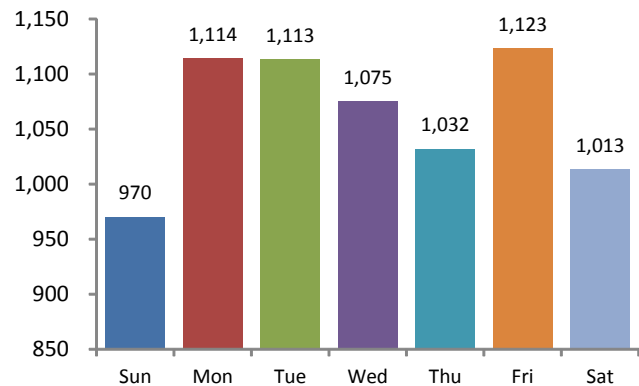
In 43 percent of the incidents reported to law enforcement agencies, the suspect or offender was Unknown. Males were involved in 40 percent of these offenses and 10 percent involved Females.

Twenty-three (23) percent of the offenses were committed by White Males and seven percent were White Females. Black Males were involved in 14 percent of these offenses and Black Females were involved in two percent of these offenses.

Offenses by Month



Offenses by Day



5-Year Trend

Number of Offenses

