

DEFINITION

Robbery is the taking or attempting to take anything of value under confrontational circumstances from the care, custody, or control of a person or persons by force, threat of force, or violence and/or by putting the victim in fear of immediate harm.

ANALYSIS

VOLUME

The number of offenses for Robbery in Michigan for 2016 was 7,116. This is a reported decrease of nine percent from 2015 and a thirty percent decrease from 2012.

The largest number of offenses occurred in the month of August; the least amount were committed in February.

RATE

The crime rate for this offense in 2016 was 72 for every 100,000 persons, which is a nine percent decrease from 2015.

CLEARANCES

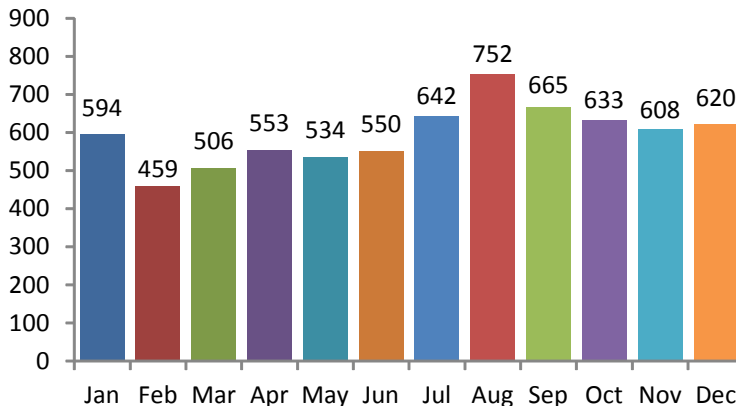
Law enforcement agencies cleared 1,292 incidents by an arrest or exceptional clearance of the 7,076 incidents reported. This is a reported eighteen percent clearance rate.

NATURE

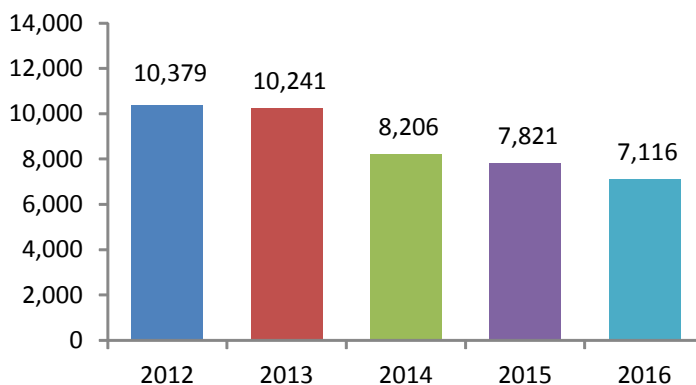
In 2016, Robberies that occurred on a Highway/Road/Alley accounted for forty-five percent of the offenses. Residence/Home accounted for sixteen percent of the offenses.

The weapon most used in the commission of these Robberies was a Handgun at thirty-six percent, which includes Automatic Handguns. Personal Weapons were used in twenty-four percent of the offenses.

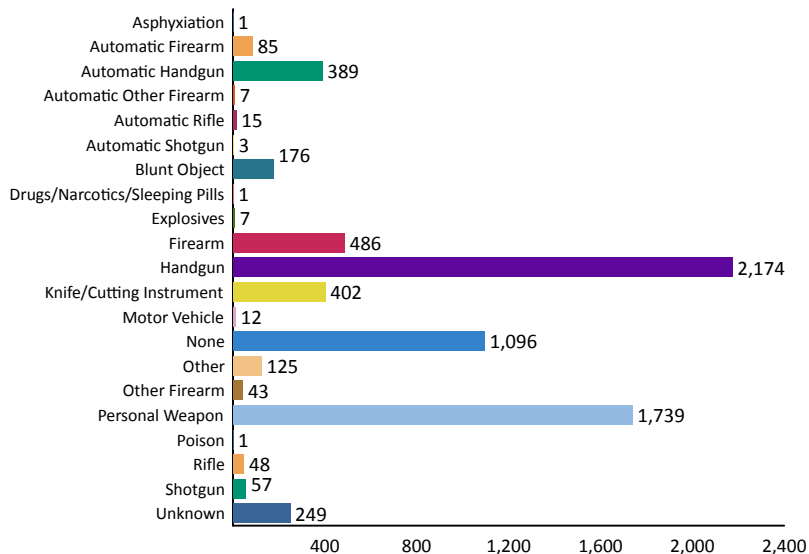
Offenses by Month



5-Year Trend
Number of Offenses



Weapons Used





Age Group		Arrests By Age, Sex, and Race										Grand Total
		FEMALE					MALE					
		Black	Unknown	White	Total	American Indian/Alaskan Native	Asian/Pacific Islander	Black	Unknown	White	Total	
Total Juveniles	10 & Under	0	0	0	0	0	0	4	0	0	4	4
	11-12	1	0	0	1	0	0	3	1	1	5	6
	13-14	3	0	3	6	0	0	45	2	4	51	57
	15	3	0	0	3	0	0	34	3	7	44	47
	16	5	1	1	7	0	0	53	1	11	65	72
	Total	12	1	4	17	0	0	139	7	23	169	186
Total Adults	17	7	0	3	10	0	0	57	5	23	85	95
	18	5	1	7	13	0	1	77	3	26	107	120
	19	7	0	1	8	1	0	75	4	25	105	113
	20	6	1	1	8	1	0	62	0	21	84	92
	21	6	3	6	15	0	0	43	4	14	61	76
	22	6	0	4	10	0	1	51	1	16	69	79
	23	7	0	2	9	0	0	40	1	8	49	58
	24	2	0	2	4	0	0	36	1	12	49	53
	25-29	15	1	23	39	0	0	118	5	75	198	237
	30-34	12	1	15	28	1	0	56	3	38	98	126
	35-39	11	0	9	20	0	1	31	2	44	78	98
	40-44	12	0	8	20	0	0	31	0	26	57	77
	45-49	8	0	1	9	1	0	28	0	15	44	53
	50-54	2	0	3	5	0	0	22	0	8	30	35
	55-59	2	0	3	5	0	0	16	0	3	19	24
	60-64	0	0	1	1	0	0	11	0	2	13	14
	65 & Above	0	0	0	0	0	0	2	0	4	6	6
Total	108	7	89	204	4	3	756	29	360	1152	1,356	
Grand Total:	120	8	93	221	4	3	895	36	383	1,321	1,542	