



# OUTDOOR ADVENTURE CENTER



## Exhibits

- 1 Guest Welcome and Ticketing Area
- 2 Majestic Elk Entrance
- 3 Fire Circle
- 4 Detroit, the River and the Globe Building
- 5 Underwater Michigan
- 6 Overnight Lodging
- 7 Michigan's Rivers and Lakes
- 8 Waterfall and Underground Mine
- 9 Sand Dunes
- 10 Duck Blind
- 11 Tower Blind
- 12 Beaver Lodge and Wetland
- 13 Pine Forest and Trails
- 14 Campsite
- 15 Big Tree

## Other Areas

- A Guest Lockers
- B Gift Shop
- C Cafeteria
- D Lodge Meeting Room
- E Archery Range
- F Warming Kitchen (staff only)
- G DNR Customer Service Center (entrance on Orleans Street only)

5/2015

## First Floor



Public Restroom



Elevator



Stairway



Emergency Exit Stairway

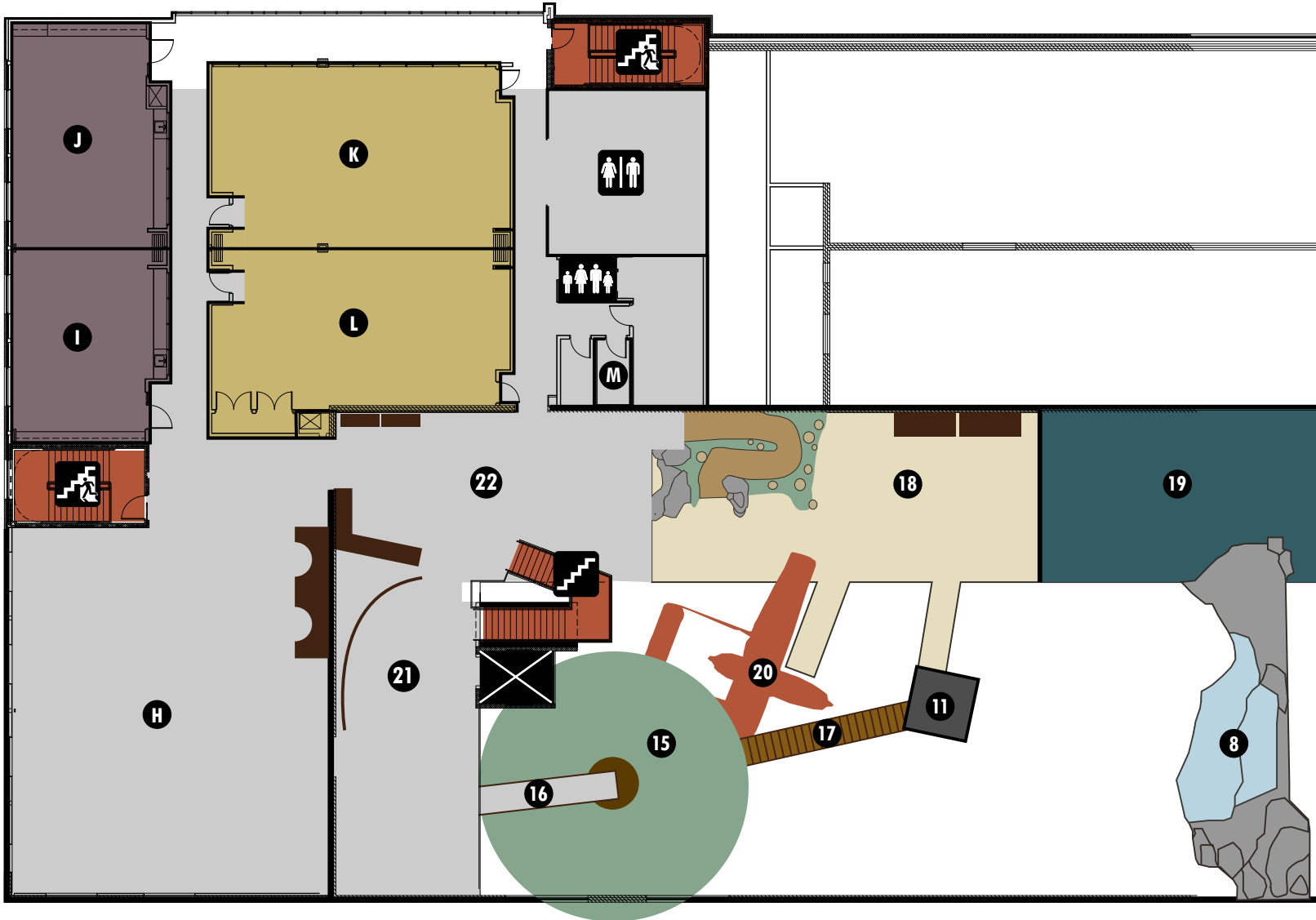
## Outdoor Adventure Center

1801 Atwater Street  
Detroit, MI 48207

844-OAC-MDNR (844-622-6367)  
[michigan.gov/outdooradventure](http://michigan.gov/outdooradventure)



# OUTDOOR ADVENTURE CENTER

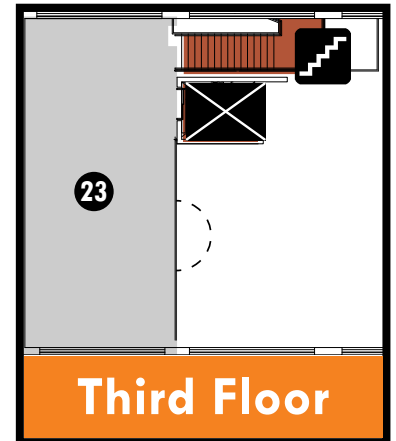


## Exhibits

- 8 Waterfall
- 11 Tower Blind
- 15 Big Tree
- 16 Bridge to Big Tree
- 17 Suspension Bridge
- 18 Hunting and Trapping Traditions
- 19 Hit the Trail
- 20 Airplane – DNR in the Sky
- 21 Nature in Your Neighborhood
- 22 Citizen Science
- 23 Treetop

## Other Areas

- H Riverview Loft
- I 204 Discovery Lab
- J 205 Discovery Lab
- K 208 Forest Conference Room
- L 209 River Conference Room
- M Baby Café (for nursing mothers)



5/2015

**Second Floor**

Public Restroom    
 Family Restroom    
 Elevator    
 Stairway    
 Emergency Exit Stairway

**Third Floor**