

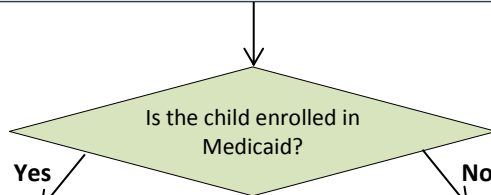
The Michigan Autism Council



Autism Spectrum Disorder: A Guide for the Primary Care Physician based upon the American Academy of Pediatrics Algorithm (2010)*

Positive Results of Surveillance or Screening

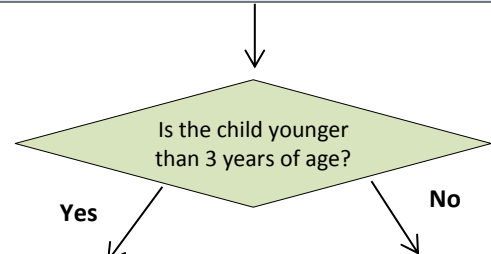
*8:2 Simultaneously Refer for:
a. Comprehensive ASD Evaluation



- Refer to CMH**
 - Evaluation for BHT/ABA services and other medically necessary services
- AND**
- Refer to OT/PT/Speech and Language/Behavior**
 - through Medicaid Health Plan
- AND**
- Refer for medical evaluation**

Advise the parent to call insurance company
Ask the parent to inform practice what is learned
See: [A Guide for Talking with Your Insurance Representative](#)

*8:2 Simultaneously Refer for:
b. Early Intervention/Special Education Evaluation



- Refer to *Early On****
- 1.800.EarlyOn
 - https://1800earlyon.org/online_referral.php
 - Contact the parent's Intermediate School District (ISD)

Advise parent to contact the local school district or intermediate school district (ISD) and submit a written request for a special education evaluation.

*8:2 Simultaneously Refer for:
c. Audiological Evaluation

Legend

- *American Academy of Pediatrics Algorithm
<http://www.medicalhomeinfo.org/downloads/pdfs/AutismAlarm.pdf>
- Decision Rule for Referral
- Possible Action by Physician

****Written Consent to Share Patient Information**

- Request written parent consent to share information with supporting agencies
- File written parent consent to share patient information in patient record and provide copy to supporting agencies