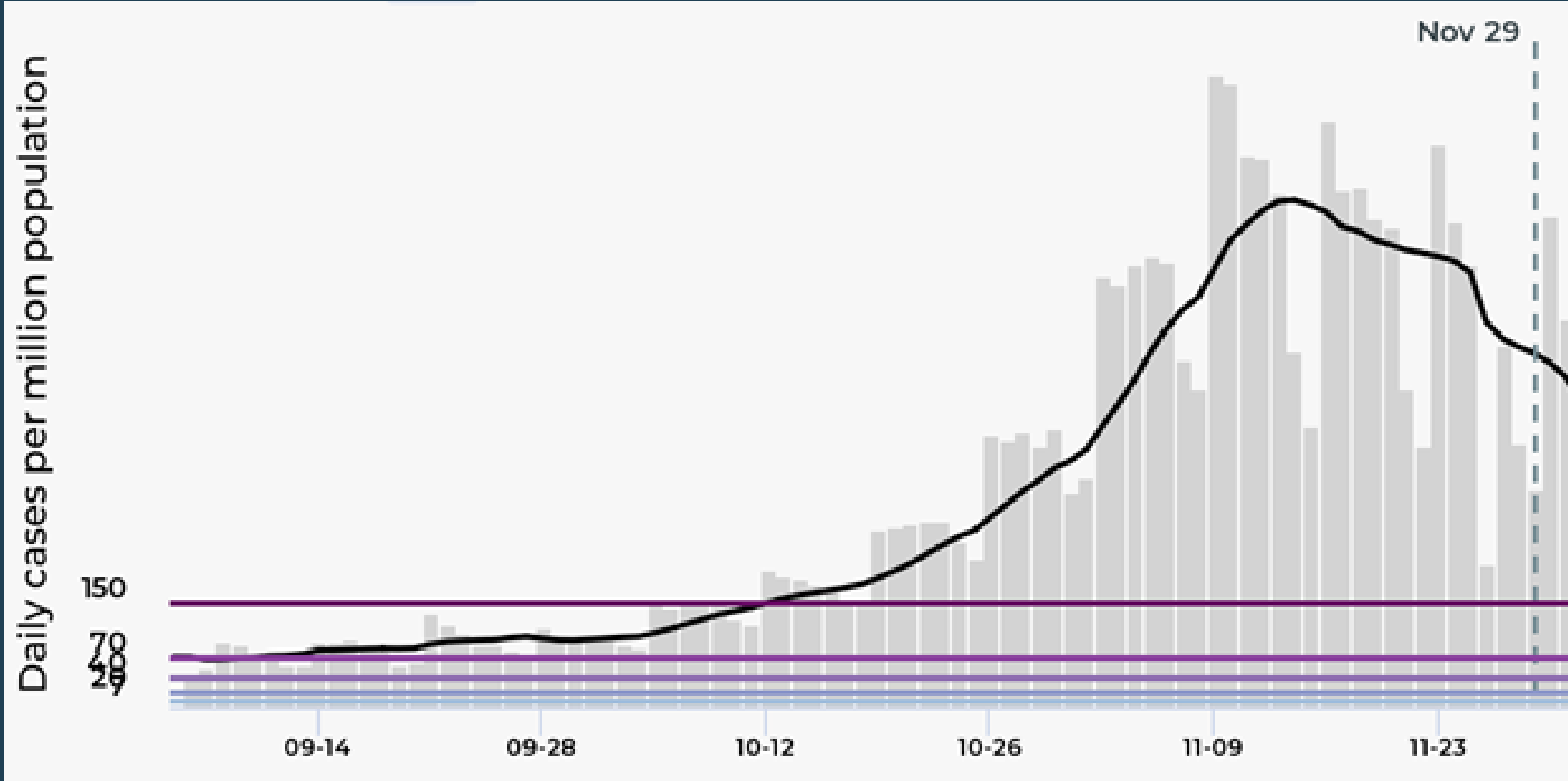


COVID-19 UPDATE

12.7.2020

Daily cases are declining but still high.

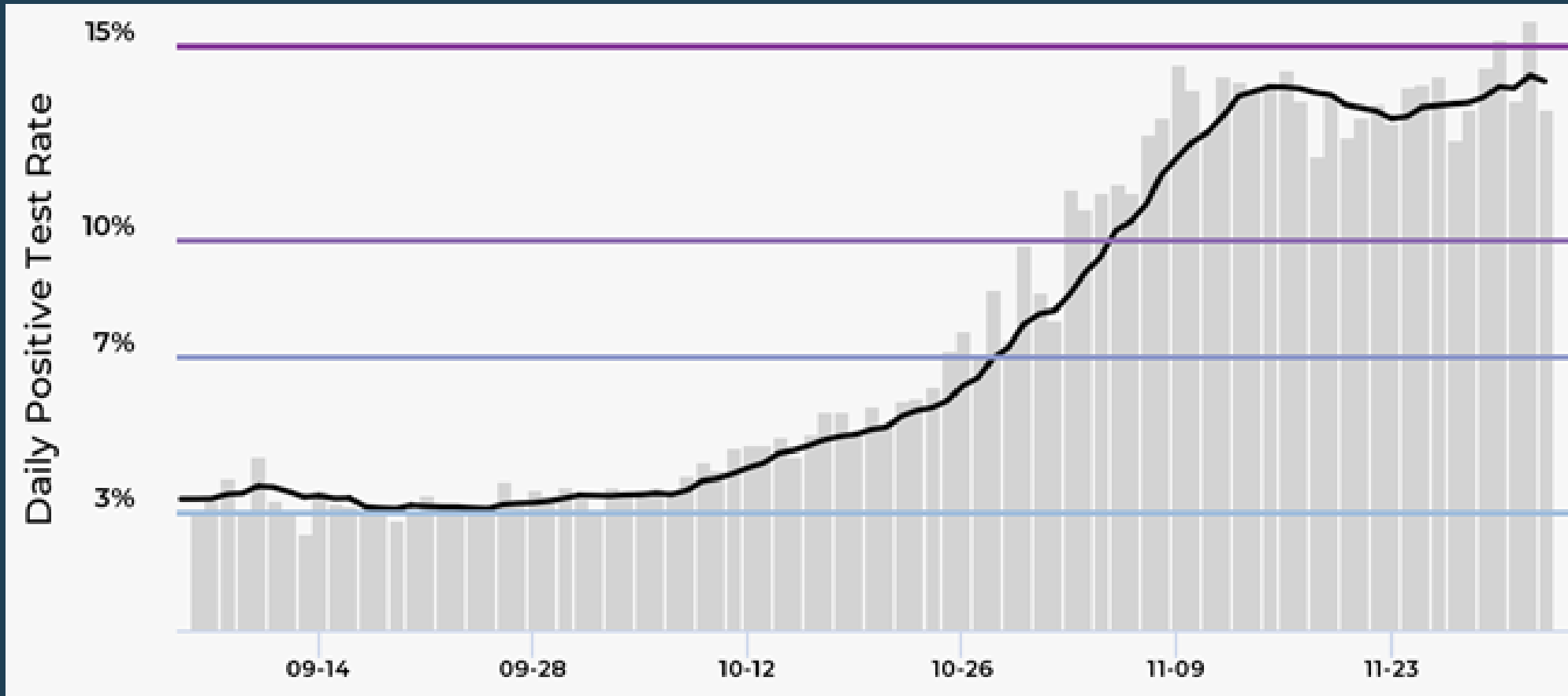


Over the last seven days, we have seen an average of 522 cases per million people

Cases have declined for 16 days, but are still 7 times what they were at the beginning of September

Graphic Source: MiStartMap.info

Percent positivity remains high.

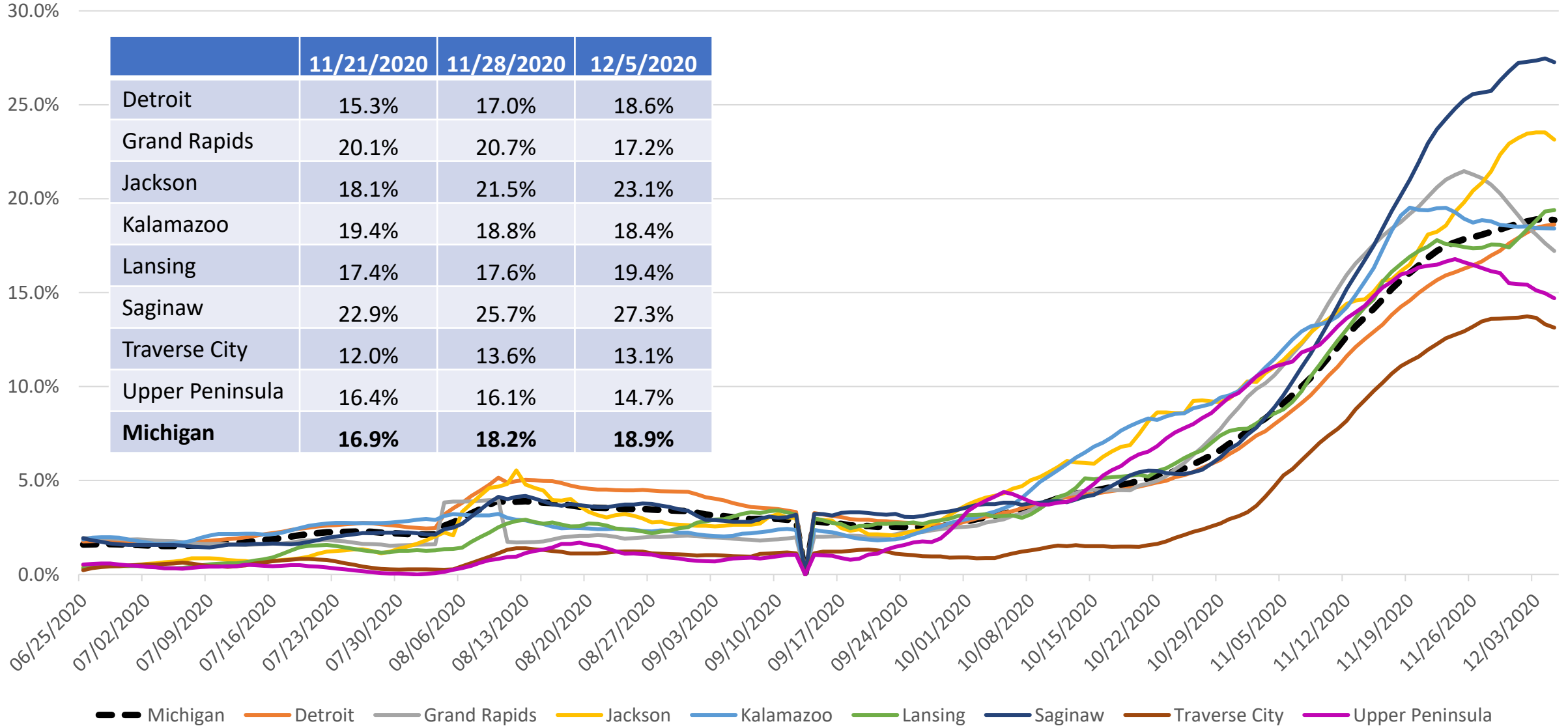


14.1% positivity over the last seven days

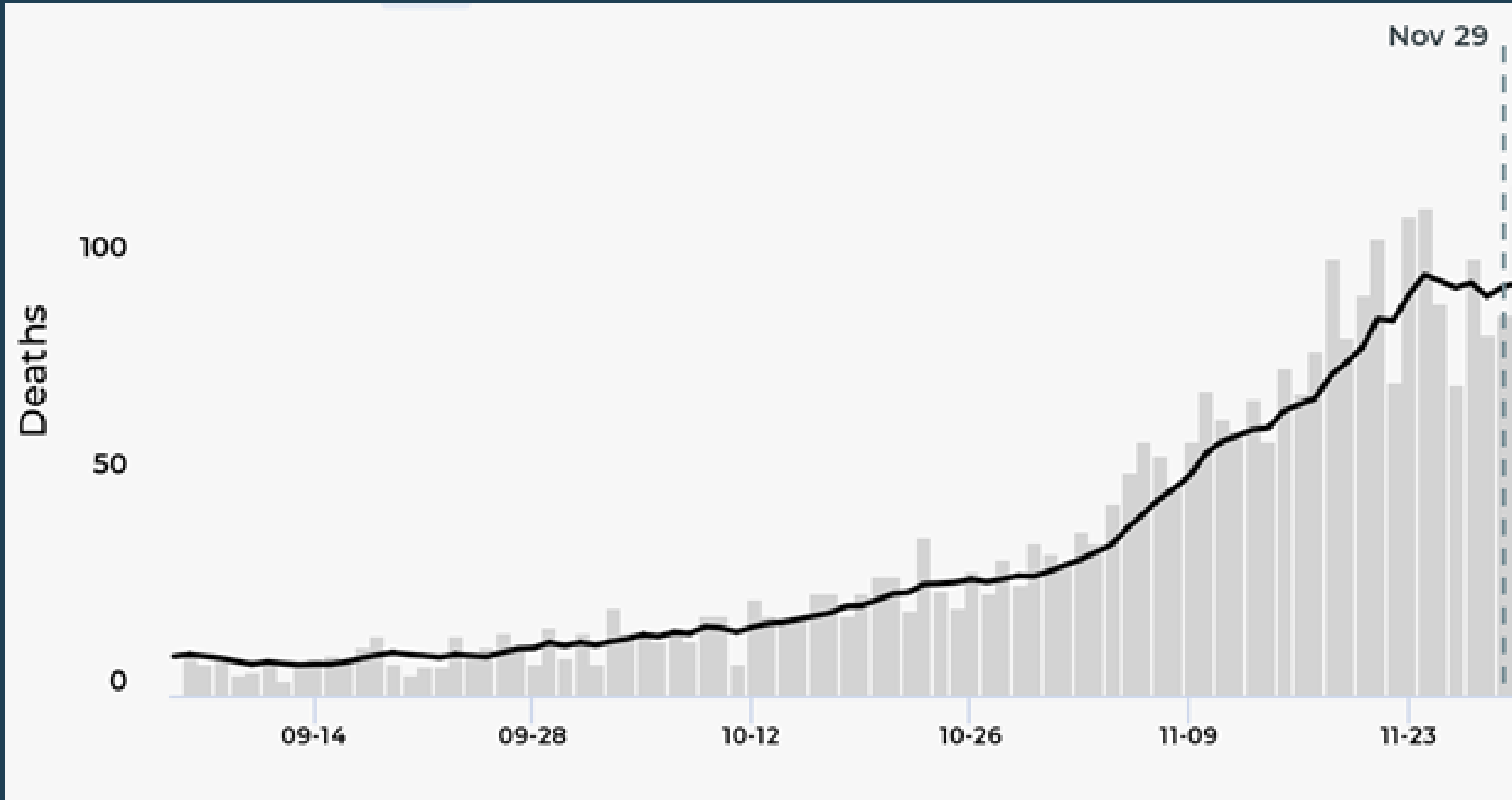
Positivity was declining after November 16th but in the last week has begun increasing.

Hospitalizations are high but slowing.

Percent of all beds with COVID+ inpatients



We have been seeing over 100 deaths a day.



The current number of deaths is 7x the amount of deaths in early October

VACCINES WILL BE AVAILABLE SOON.




LEARN MORE AT

WWW.MICHIGAN.GOV/COVIDVACCINE

COVID-19

KEY METRICS FOR SAFE RESTART



	Metric	Why it matters	What we want to see
Share of hospital beds with COVID-19 patients	Percent of inpatient beds occupied by COVID-19 patients	Measures impact on hospitals. Takes time after cases decline to show improvement.	 Flat or declining trend
COVID-19 case rates	COVID-19 cases per 1,000,000 residents	Direct measure of COVID-19 spread. Drives hospitalizations.	 Declining trend
Percent positivity	Percent of COVID-19 tests that are positive	Measures whether we could be missing cases in the community. Early indication of future cases and hospitalizations.	 Declining trend



**Pause
continues
through
December
20th**



We will be watching:

- % of hospital beds with COVID patients
- COVID case rates
- Positivity rates



**As things improve,
the next things to
open will be:**

- High schools
- Theaters, casinos, auditoriums, stadiums, bowling, arcades, bingo, without concessions

COVID-19 UPDATE

12.7.2020