

# MI Safer Schools: COVID-19 Testing Orientation

---

MICHIGAN DEPARTMENT OF HEALTH AND  
HUMAN SERVICES

# Objectives

---

- ✓ Communicate testing options available to schools for the 2021-2022 school year
- ✓ Convene stakeholders and continue to foster discussion around COVID-19 testing
- ✓ Continue to build the value case for voluntary COVID-19 testing in schools

# Agenda

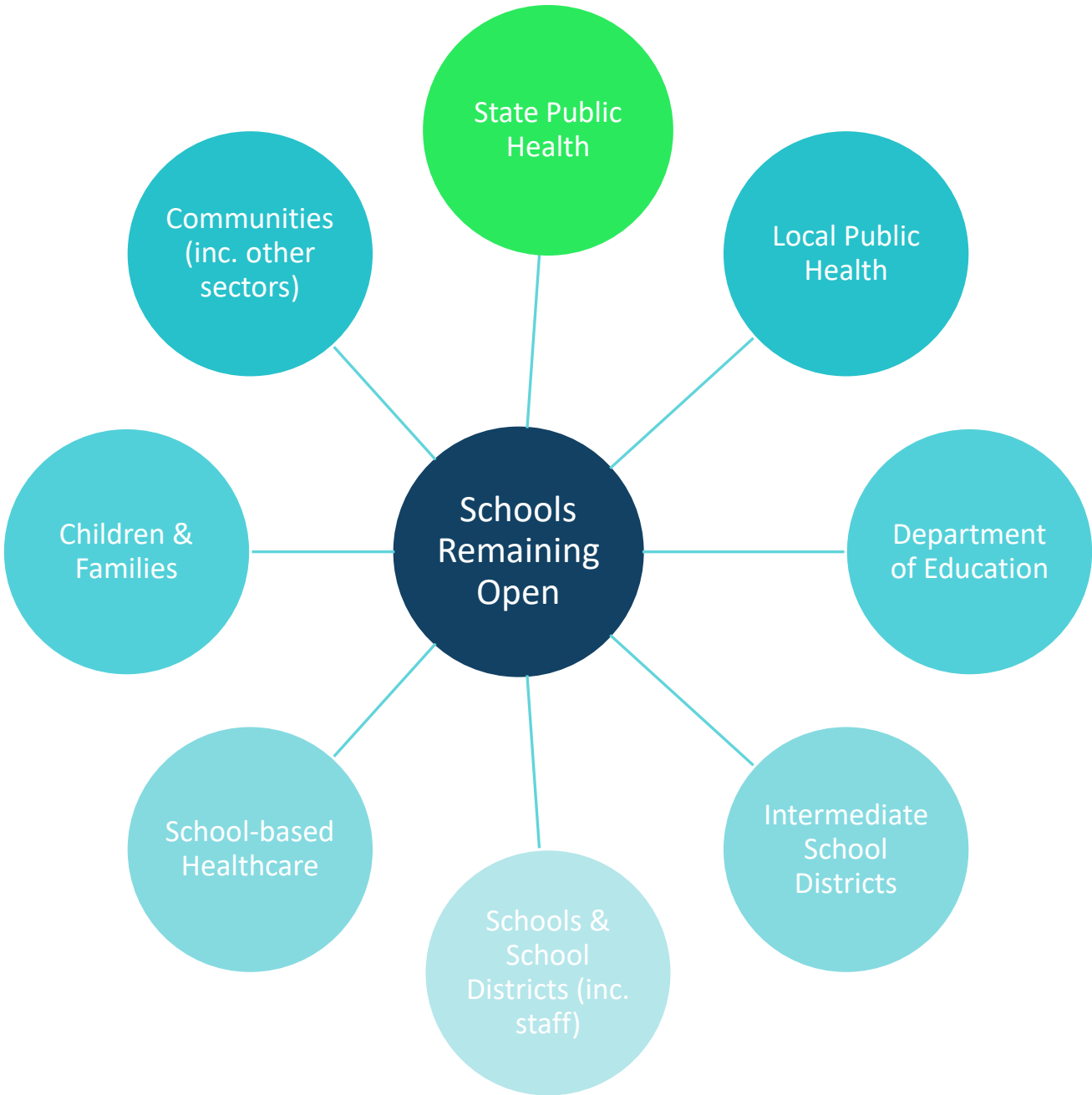
---

9:00am – 9:45am	<b>Introduction</b>
9:45am – 10am	<b>Break</b>
10:00am – 10:50am	<b>BinaxNOW Training</b>
10:50am – 11:00am	<b>Break</b>
11:00am – 12:00pm	<b>Pooled Testing Training</b>
12:00pm – 1:00pm	<b>Lunch Break</b>
1:00pm – 1:45pm	<b>Logistics, Reorder, Reporting</b>
1:45pm – 2:30pm	<b>Open Q &amp; A/ Debrief</b>

# Introduction

---

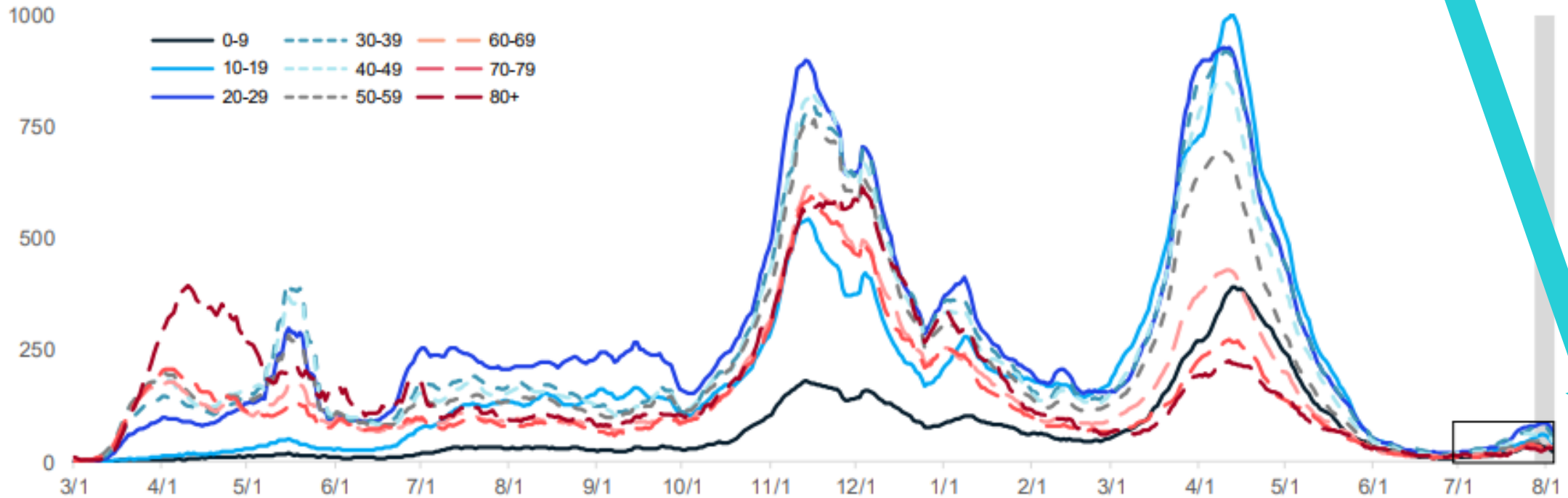
- COVID-19 testing is **optional/voluntary** for the 2021-2022 school year.
- Testing is one of many mitigation strategies that schools may use to help students and staff stay safe and remain in school.
- For the latest recommendations for schools, please review the [Recommendations for Safer School Operations during COVID-19.](#)



# Who's invested?

# Age group: average new daily cases

Daily new confirmed and probable cases per million by age group (7-day rolling average)



## KEY TAKEAWAY:

- ✓ Case rate trends for most age groups are increasing

# Testing Rationale

---

- Testing allows for the identification of cases and prevention of large scale outbreaks
- Testing provides a platform for disease surveillance
- Testing provides another layer of protection, especially for children under 12 and others who are ineligible for vaccination

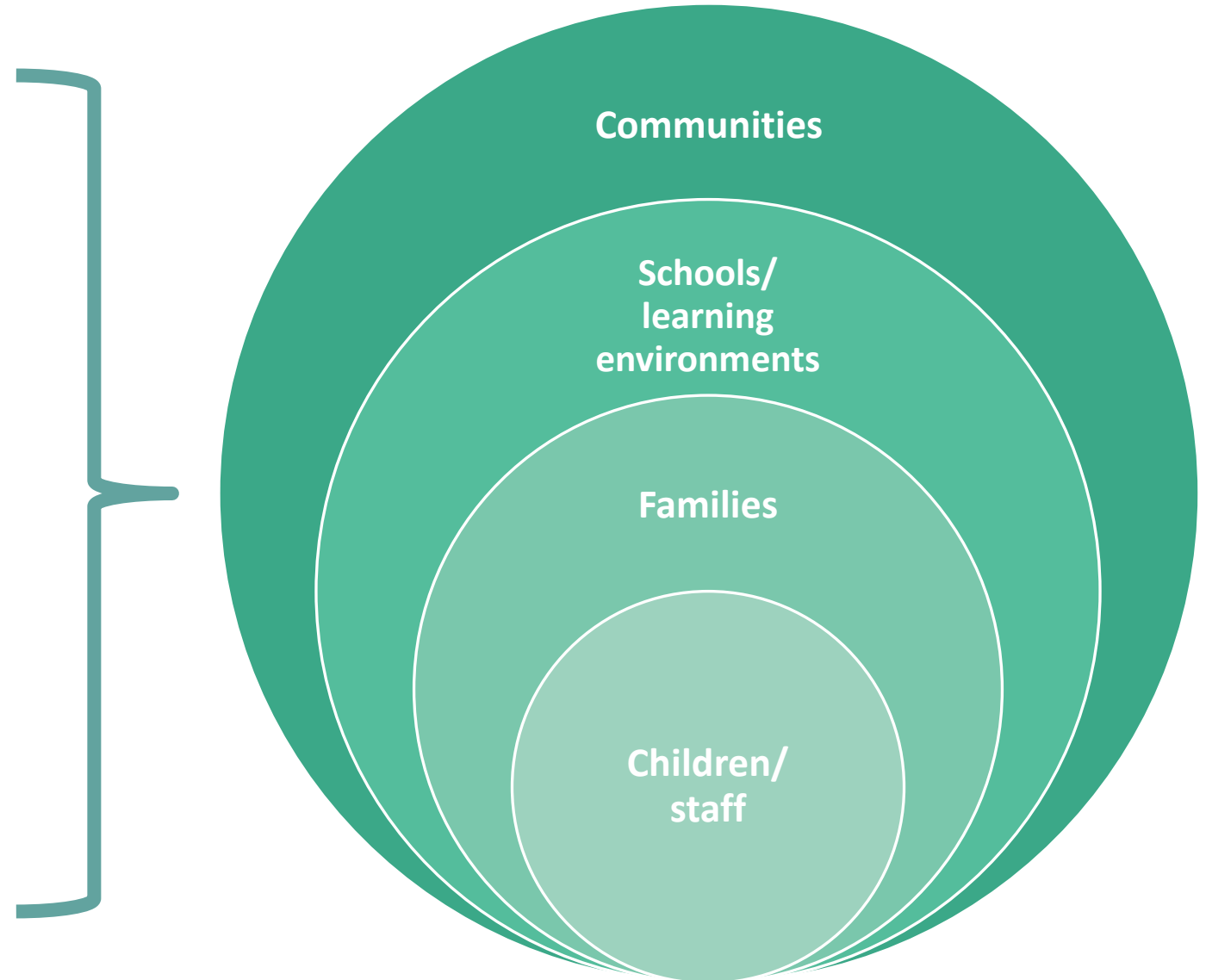
# Healthier.....

COVID-19 Mitigation Strategies,  
including *voluntary*  
testing



Other measures to support **whole  
child health**, e.g.:

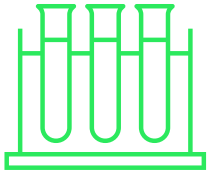
- Childhood immunizations
- Mental health support
- Social services and related resources
- Connection to support for families





# What testing options are available?

---



## PCR Test

Highest Sensitivity

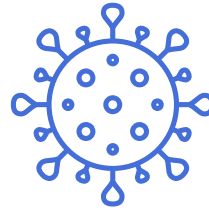
- May pick up cases that are no longer transmissible

High specificity

Typically performed in a lab

Results take 72 hours

Most are NP (can be saliva)



## Antigen Test

Sensitivity not as high as PCR

- Good at detecting those at highest risk of infecting others

High specificity

Can be performed anywhere

Results take 10-15 min

Most are nasal swabs

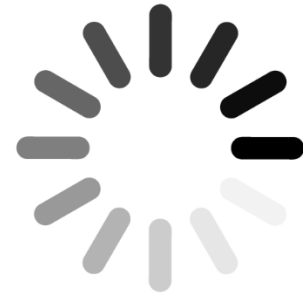
Cost Effective

# Program Continuation

---

- Utilize **EDX funds** to build upon successful *voluntary* statewide antigen testing strategy and provide support through the use of HRA's.
- Continue to **provide point-of-care antigen tests** (BinaxNOW), **training**, and **simple reporting** options to public and private K-12 schools.
- Facilitate **coordinated testing efforts**- local health departments, school districts, other stakeholders.

# Break



---

TRAINING RESUMES AT 10

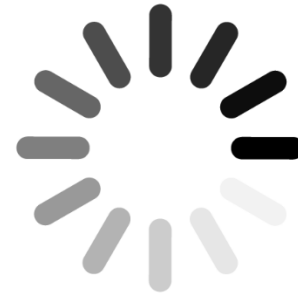


# COVID-19 Testing Using Abbott BinaxNOW™

---

Carrie Anglewicz, M.S.  
Matthew Bashore, MPH  
MDHHS Bureau of Laboratories

# Break



---

TRAINING RESUMES AT 11



# Pooled Testing

---

DEREK SHIAVONE

MIDWEST COORDINATION CENTER STATE LEAD-MI

[schiavone@testedandprotected.org](mailto:schiavone@testedandprotected.org)

# Lunch

---

TRAINING RESUMES AT 1 PM

# Logistics, Reordering, Reporting

---

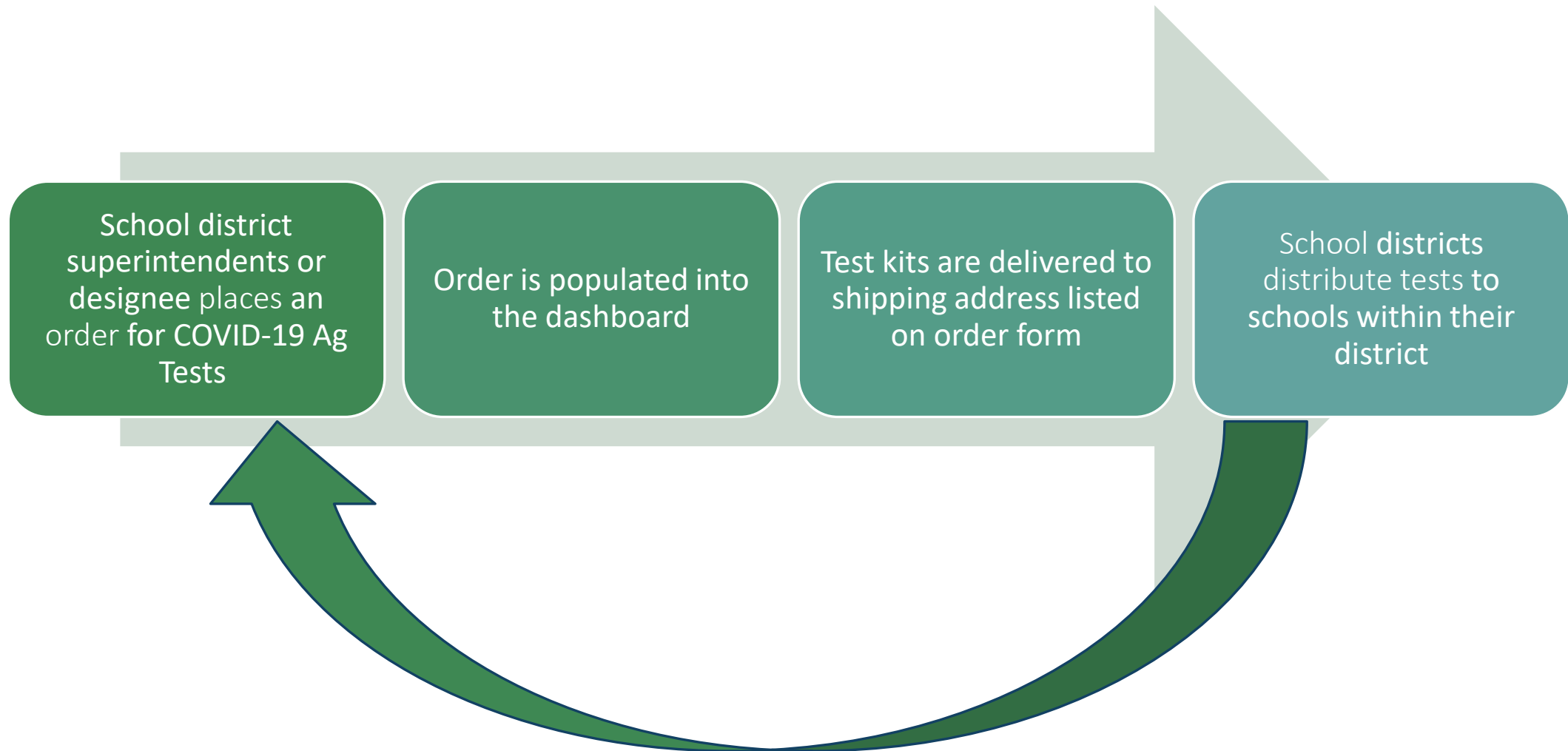


# Antigen Testing Ordering Process

---

1. School district superintendents or designee will now complete the new MI Safer Schools: School DISTRICT Antigen COVID Test Ordering Form
2. Test kits will be delivered to designated shipping address listed on order form
3. School districts are responsible to distribute to schools within their district
4. New ordering form is available from December 13<sup>th</sup>
5. For questions, can contact one of the COVID-19 School Testing Liaisons at [MDHHS-COVIDTestingSupport@michigan.gov](mailto:MDHHS-COVIDTestingSupport@michigan.gov)

# ISD Ag Testing Process Flow



# Reporting Requirements

- AGGERATE NEGATIVES ARE REQUIRED TO BE REPORTED WITHIN 24 HOURS FOR ANTIGEN TESTING
- INDIVIDUAL POSTIVES ARE REQUIRED TO BE REPORTED WITHIN 4 HOURS FOR ANTIGEN TESTING
- POOLED TESTING WILL BE REPORTED THROUGH MCC

# Q & A / Debrief

---



Questions?

[MDHHS-  
COVIDTestingSupport@michigan.gov](mailto:MDHHS-COVIDTestingSupport@michigan.gov)