



QUARTERLY STATEMENT
AS OF SEPTEMBER 30, 2022
OF THE CONDITION AND AFFAIRS OF THE
HONEST HMO OF MICHIGAN LLC

NAIC Group Code NAIC Company Code 17291 Employer's ID Number 87-2580437
(Current) (Prior)

Organized under the Laws of MI State of Domicile or Port of Entry MI
Country of Domicile US
Licensed as business type: Health Maintenance Organization Is HMO Federally Qualified? NO
Incorporated/Organized 08/10/2021 Commenced Business
Statutory Home Office 1155 Brewery Park Blvd, Suite 440 Detroit, MI, US 48207
Main Administrative Office 210 Athens Way Suite 100 Nashville, TN, US 37228 833-633-1295 (Telephone Number)
Mail Address 210 Athens Way Suite 100 Nashville, TN, US 37228
Primary Location of Books and Records 210 Athens Way Suite 100 Nashville, TN, US 37228 833-633-1295 (Telephone Number)
Internet Website Address https://honestmedicalgroup.com/
Statutory Statement Contact Adam Salvador 344-546-1196 (Telephone Number)
asalvador@honestmedicalgroup.com (E-Mail Address) (Fax Number)

OFFICERS

Aric Coffman#, CEO Clayton Meyers#, Secretary
Dave Mull#, CFO

DIRECTORS OR TRUSTEES

Clayton Meyers# Vignesh Chandramouli#
Aric Coffman# Dave Mull#

State of
County of SS

The officers of this reporting entity being duly sworn, each depose and say that they are the described officers of said reporting entity, and that on the reporting period stated above, all of the herein described assets were the absolute property of the said reporting entity, free and clear from any liens or claims thereon, except as herein stated, and that this statement, together with related exhibits, schedules and explanations therein contained, annexed or referred to, is a full and true statement of all the assets and liabilities and of the condition and affairs of the said reporting entity as of the reporting period stated above, and of its income and deductions therefrom for the period ended, and have been completed in accordance with the NAIC Annual Statement Instructions and Accounting Practices and Procedures manual except to the extent that: (1) state law may differ; or, (2) that state rules or regulations require differences in reporting not related to accounting practices and procedures, according to the best of their information, knowledge and belief, respectively. Furthermore, the scope of this attestation by the described officers also includes the related corresponding electronic filing with the NAIC, when required, that is an exact copy (except for formatting differences due to electronic filing) of the enclosed statement. The electronic filing may be requested by various regulators in lieu of or in addition to the enclosed statement.

x Aric Coffman CEO x Dave Mull CFO x Clayton Meyers Secretary

Subscribed and sworn to before me
this _____ day of

- a. Is this an original filing? Yes
b. If no:
1. State the amendment number:
2. Date filed:
3. Number of pages attached:

x

ASSETS

	Current Statement Date			4 December 31 Prior Year Net Admitted Assets
	1 Assets	2 Nonadmitted Assets	3 Net Admitted Assets (Cols. 1 - 2)	
1. Bonds.....				
2. Stocks:				
2.1 Preferred stocks.....				
2.2 Common stocks.....				
3. Mortgage loans on real estate:				
3.1 First liens.....				
3.2 Other than first liens.....				
4. Real estate:				
4.1 Properties occupied by the company (less \$ encumbrances).....				
4.2 Properties held for the production of income (less \$ encumbrances).....				
4.3 Properties held for sale (less \$ encumbrances).....				
5. Cash (\$ 1,503,000), cash equivalents (\$ 1,234) and short-term investments (\$ 109,525).....	1,613,759		1,613,759	
6. Contract loans (including \$ premium notes).....				
7. Derivatives.....				
8. Other invested assets.....				
9. Receivables for securities.....				
10. Securities lending reinvested collateral assets.....				
11. Aggregate write-ins for invested assets.....				
12. Subtotals, cash and invested assets (Lines 1 to 11).....	1,613,759		1,613,759	
13. Title plants less \$ charged off (for Title insurers only).....				
14. Investment income due and accrued.....				
15. Premiums and considerations:				
15.1 Uncollected premiums and agents' balances in the course of collection.....				
15.2 Deferred premiums, agents' balances and installments booked but deferred and not yet due (including \$ earned but unbilled premiums).....				
15.3 Accrued retrospective premiums (\$) and contracts subject to redetermination (\$).....				
16. Reinsurance:				
16.1 Amounts recoverable from reinsurers.....				
16.2 Funds held by or deposited with reinsured companies.....				
16.3 Other amounts receivable under reinsurance contracts.....				
17. Amounts receivable relating to uninsured plans.....				
18.1 Current federal and foreign income tax recoverable and interest thereon.....				
18.2 Net deferred tax asset.....				
19. Guaranty funds receivable or on deposit.....				
20. Electronic data processing equipment and software.....				
21. Furniture and equipment, including health care delivery assets (\$).....				
22. Net adjustment in assets and liabilities due to foreign exchange rates.....				
23. Receivables from parent, subsidiaries and affiliates.....				
24. Health care (\$) and other amounts receivable.....				
25. Aggregate write-ins for other-than-invested assets.....				
26. Total assets excluding Separate Accounts, Segregated Accounts and Protected Cell Accounts (Lines 12 to 25).....	1,613,759		1,613,759	
27. From Separate Accounts, Segregated Accounts and Protected Cell Accounts.....				
28. Total (Lines 26 and 27).....	1,613,759		1,613,759	
Details of Write-Ins				
1101.....				
1102.....				
1103.....				
1198. Summary of remaining write-ins for Line 11 from overflow page.....				
1199. Totals (Lines 1101 through 1103 plus 1198) (Line 11 above).....				
2501.....				
2502.....				
2503.....				
2598. Summary of remaining write-ins for Line 25 from overflow page.....				
2599. Totals (Lines 2501 through 2503 plus 2598) (Line 25 above).....				

LIABILITIES, CAPITAL AND SURPLUS

	Current Period			Prior Year
	1 Covered	2 Uncovered	3 Total	4 Total
1. Claims unpaid (less \$ reinsurance ceded)				
2. Accrued medical incentive pool and bonus amounts				
3. Unpaid claims adjustment expenses				
4. Aggregate health policy reserves, including the liability of \$ for medical loss ratio rebate per the Public Health Service Act				
5. Aggregate life policy reserves				
6. Property/casualty unearned premium reserve				
7. Aggregate health claim reserves				
8. Premiums received in advance				
9. General expenses due or accrued				
10.1 Current federal and foreign income tax payable and interest thereon (including \$ on realized gains (losses))				
10.2 Net deferred tax liability				
11. Ceded reinsurance premiums payable				
12. Amounts withheld or retained for the account of others				
13. Remittances and items not allocated				
14. Borrowed money (including \$ current) and interest thereon \$ (including \$ current)				
15. Amounts due to parent, subsidiaries and affiliates	3,000		3,000	
16. Derivatives				
17. Payable for securities				
18. Payable for securities lending				
19. Funds held under reinsurance treaties (with \$ authorized reinsurers, \$ unauthorized reinsurers and \$ certified reinsurers)				
20. Reinsurance in unauthorized and certified (\$) companies				
21. Net adjustments in assets and liabilities due to foreign exchange rates				
22. Liability for amounts held under uninsured plans				
23. Aggregate write-ins for other liabilities (including \$ current)				
24. Total liabilities (Lines 1 to 23)	3,000		3,000	
25. Aggregate write-ins for special surplus funds	XXX	XXX		
26. Common capital stock	XXX	XXX		
27. Preferred capital stock	XXX	XXX		
28. Gross paid in and contributed surplus	XXX	XXX	1,613,000	
29. Surplus notes	XXX	XXX		
30. Aggregate write-ins for other-than-special surplus funds	XXX	XXX		
31. Unassigned funds (surplus)	XXX	XXX	(2,241)	
32. Less treasury stock, at cost:				
32.1 shares common (value included in Line 26 \$)	XXX	XXX		
32.2 shares preferred (value included in Line 27 \$)	XXX	XXX		
33. Total capital and surplus (Lines 25 to 31 minus Line 32)	XXX	XXX	1,610,759	
34. Total liabilities, capital and surplus (Lines 24 and 33)	XXX	XXX	1,613,759	
Details of Write-Ins				
2301.				
2302.				
2303.				
2398. Summary of remaining write-ins for Line 23 from overflow page				
2399. Totals (Lines 2301 through 2303 plus 2398) (Line 23 above)				
2501.	XXX	XXX		
2502.	XXX	XXX		
2503.	XXX	XXX		
2598. Summary of remaining write-ins for Line 25 from overflow page	XXX	XXX		
2599. Totals (Lines 2501 through 2503 plus 2598) (Line 25 above)	XXX	XXX		
3001.	XXX	XXX		
3002.	XXX	XXX		
3003.	XXX	XXX		
3098. Summary of remaining write-ins for Line 30 from overflow page	XXX	XXX		
3099. Totals (Lines 3001 through 3003 plus 3098) (Line 30 above)	XXX	XXX		

STATEMENT OF REVENUE AND EXPENSES

	Current Year to Date		Prior Year To Date	Prior Year Ended December 31
	1	2	3	4
	Uncovered	Total	Total	Total
1. Member Months.....	XXX			
2. Net premium income (including \$ non-health premium income).....	XXX			
3. Change in unearned premium reserves and reserve for rate credits.....	XXX			
4. Fee-for-service (net of \$ medical expenses).....	XXX			
5. Risk revenue.....	XXX			
6. Aggregate write-ins for other health care related revenues.....	XXX			
7. Aggregate write-ins for other non-health revenues.....	XXX			
8. Total revenues (Lines 2 to 7).....	XXX			
Hospital and Medical:				
9. Hospital/medical benefits.....				
10. Other professional services.....				
11. Outside referrals.....				
12. Emergency room and out-of-area.....				
13. Prescription drugs.....				
14. Aggregate write-ins for other hospital and medical.....				
15. Incentive pool, withhold adjustments and bonus amounts.....				
16. Subtotal (Lines 9 to 15).....				
Less:				
17. Net reinsurance recoveries.....				
18. Total hospital and medical (Lines 16 minus 17).....				
19. Non-health claims (net).....				
20. Claims adjustment expenses, including \$ cost containment expenses.....				
21. General administrative expenses.....				
22. Increase in reserves for life and accident and health contracts (including \$ increase in reserves for life only).....				
23. Total underwriting deductions (Lines 18 through 22).....				
24. Net underwriting gain or (loss) (Lines 8 minus 23).....	XXX			
25. Net investment income earned.....		(2,241)		
26. Net realized capital gains (losses) less capital gains tax of \$.....				
27. Net investment gains (losses) (Lines 25 plus 26).....		(2,241)		
28. Net gain or (loss) from agents' or premium balances charged off [(amount recovered \$) (amount charged off \$)].....				
29. Aggregate write-ins for other income or expenses.....				
30. Net income or (loss) after capital gains tax and before all other federal income taxes (Lines 24 plus 27 plus 28 plus 29).....	XXX	(2,241)		
31. Federal and foreign income taxes incurred.....	XXX			
32. Net income (loss) (Lines 30 minus 31).....	XXX	(2,241)		
Details of Write-Ins				
0601.....	XXX			
0602.....	XXX			
0603.....	XXX			
0698. Summary of remaining write-ins for Line 6 from overflow page.....	XXX			
0699. Totals (Lines 0601 through 0603 plus 0698) (Line 6 above).....	XXX			
0701.....	XXX			
0702.....	XXX			
0703.....	XXX			
0798. Summary of remaining write-ins for Line 7 from overflow page.....	XXX			
0799. Totals (Lines 0701 through 0703 plus 0798) (Line 7 above).....	XXX			
1401.....				
1402.....				
1403.....				
1498. Summary of remaining write-ins for Line 14 from overflow page.....				
1499. Totals (Lines 1401 through 1403 plus 1498) (Line 14 above).....				
2901.....				
2902.....				
2903.....				
2998. Summary of remaining write-ins for Line 29 from overflow page.....				
2999. Totals (Lines 2901 through 2903 plus 2998) (Line 29 above).....				

STATEMENT OF REVENUE AND EXPENSES (CONTINUED)

	1	2	3
CAPITAL & SURPLUS ACCOUNT	Current Year To Date	Prior Year To Date	Prior Year Ended December 31
33. Capital and surplus prior reporting year.....			
34. Net income or (loss) from Line 32.....	(2,241)		
35. Change in valuation basis of aggregate policy and claim reserves.....			
36. Change in net unrealized capital gains (losses) less capital gains tax of \$			
37. Change in net unrealized foreign exchange capital gain or (loss).....			
38. Change in net deferred income tax.....			
39. Change in nonadmitted assets.....			
40. Change in unauthorized and certified reinsurance.....			
41. Change in treasury stock.....			
42. Change in surplus notes.....			
43. Cumulative effect of changes in accounting principles.....			
44. Capital Changes:			
44.1 Paid in.....			
44.2 Transferred from surplus (Stock Dividend).....			
44.3 Transferred to surplus.....			
45. Surplus adjustments:			
45.1 Paid in.....	1,613,000		
45.2 Transferred to capital (Stock Dividend).....			
45.3 Transferred from capital.....			
46. Dividends to stockholders.....			
47. Aggregate write-ins for gains or (losses) in surplus.....			
48. Net change in capital and surplus (Lines 34 to 47).....	1,610,759		
49. Capital and surplus end of reporting period (Line 33 plus 48).....	1,610,759		
Details of Write-Ins			
4701.....			
4702.....			
4703.....			
4798. Summary of remaining write-ins for Line 47 from overflow page.....			
4799. Totals (Lines 4701 through 4703 plus 4798) (Line 47 above).....			

CASH FLOW

	1	2	3
	Current Year To Date	Prior Year To Date	Prior Year Ended December 31
Cash from Operations			
1. Premiums collected net of reinsurance.....			
2. Net investment income.....	(2,241)		
3. Miscellaneous income.....			
4. Total (Lines 1 to 3).....	(2,241)		
5. Benefit and loss related payments.....			
6. Net transfers to Separate Accounts, Segregated Accounts and Protected Cell Accounts.....			
7. Commissions, expenses paid and aggregate write-ins for deductions.....			
8. Dividends paid to policyholders.....			
9. Federal and foreign income taxes paid (recovered) net of \$ tax on capital gains (losses).....			
10. Total (Lines 5 through 9).....			
11. Net cash from operations (Line 4 minus Line 10).....	(2,241)		
Cash from Investments			
12. Proceeds from investments sold, matured or repaid:			
12.1 Bonds.....			
12.2 Stocks.....			
12.3 Mortgage loans.....			
12.4 Real estate.....			
12.5 Other invested assets.....			
12.6 Net gains or (losses) on cash, cash equivalents and short-term investments.....			
12.7 Miscellaneous proceeds.....			
12.8 Total investment proceeds (Lines 12.1 to 12.7).....			
13. Cost of investments acquired (long-term only):			
13.1 Bonds.....			
13.2 Stocks.....			
13.3 Mortgage loans.....			
13.4 Real estate.....			
13.5 Other invested assets.....			
13.6 Miscellaneous applications.....			
13.7 Total investments acquired (Lines 13.1 to 13.6).....			
14. Net increase (or decrease) in contract loans and premium notes.....			
15. Net cash from investments (Line 12.8 minus Line 13.7 and Line 14).....			
Cash from Financing and Miscellaneous Sources			
16. Cash provided (applied):			
16.1 Surplus notes, capital notes.....			
16.2 Capital and paid in surplus, less treasury stock.....	1,613,000		
16.3 Borrowed funds.....			
16.4 Net deposits on deposit-type contracts and other insurance liabilities.....			
16.5 Dividends to stockholders.....			
16.6 Other cash provided (applied).....	3,000		
17. Net cash from financing and miscellaneous sources (Line 16.1 through Line 16.4 minus Line 16.5 plus Line 16.6).....	1,616,000		
Reconciliation of Cash, Cash Equivalents and Short-Term Investments			
18. Net change in cash, cash equivalents and short-term investments (Line 11, plus Lines 15 and 17).....	1,613,759		
19. Cash, cash equivalents and short-term investments:			
19.1 Beginning of year.....			
19.2 End of period (Line 18 plus Line 19.1).....	1,613,759		
Note: Supplemental disclosures of cash flow information for non-cash transactions:			
20.0001.....			

EXHIBIT OF PREMIUMS, ENROLLMENT AND UTILIZATION

	1	Comprehensive (Hospital & Medical)		4	5	6	7	8	9	10
	Total	2 Individual	3 Group	Medicare Supplement	Vision Only	Dental Only	Federal Employees Health Benefits Plan	Title XVIII Medicare	Title XIX Medicaid	Other
Total Members at end of:										
1. Prior Year.....										
2. First Quarter.....										
3. Second Quarter.....										
4. Third Quarter.....										
5. Current Year.....										
6. Current Year Member Months.....										
Total Member Ambulatory Encounters for Period:										
7. Physician.....										
8. Non-Physician.....										
9. Total.....										
10. Hospital Patient Days Incurred.....										
11. Number of Inpatient Admissions.....										
12. Health Premiums Written (a).....										
13. Life Premiums Direct.....										
14. Property/Casualty Premiums Written.....										
15. Health Premiums Earned.....										
16. Property/Casualty Premiums Earned.....										
17. Amount Paid for Provision of Health Care Services.....										
18. Amount Incurred for Provision of Health Care Services.....										

NONE

(a) For health premiums written: amount of Medicare Title XVIII exempt from state taxes or fees \$

CLAIMS UNPAID AND INCENTIVE POOL, WITHHOLD AND BONUS (REPORTED AND UNREPORTED)

Aging Analysis of Unpaid Claims

1 Account	2 1 - 30 Days	3 31 - 60 Days	4 61 - 90 Days	5 91 - 120 Days	6 Over 120 Days	7 Total
Claims Unpaid (Reported)						
0899999 – Accrued medical incentive pool and bonus amounts						

NONE

UNDERWRITING AND INVESTMENT EXHIBIT

ANALYSIS OF CLAIMS UNPAID-PRIOR YEAR-NET OF REINSURANCE

	Claims Paid Year to Date		Liability End of Current Quarter		5	6
	1	2	3	4		
	On Claims Incurred Prior to January 1 of Current Year	On Claims Incurred During the Year	On Claims Unpaid Dec. 31 of Prior Year	On Claims Incurred During the Year	Claims Incurred in Prior Years (Columns 1 + 3)	Estimated Claim Reserve and Claim Liability Dec. 31 of Prior Year
1. Comprehensive (hospital and medical).....						
2. Medicare Supplement.....						
3. Dental only.....						
4. Vision only.....						
5. Federal Employees Health Benefits Plan.....						
6. Title XVIII – Medicare.....						
7. Title XIX – Medicaid.....						
8. Other health.....						
9. Health subtotal (Lines 1 to 8).....						
10. Health care receivables (a).....						
11. Other non-health.....						
12. Medical incentive pools and bonus amounts.....						
13. Totals (Lines 9-10+11+12).....						

NONE

(a) Excludes \$ loans or advances to providers not yet expensed.

Notes to the Financial Statements

1. Summary of Significant Accounting Policies and Going Concern

A. Accounting Practices

The accompanying financial statements of Honest HMO of Michigan LLC (the "Company") have been prepared in conformity with accounting practices prescribed or permitted by the Michigan Department of Insurance and Financial Services for determining and reporting the financial conditions and results of operations of an insurance company for determining its solvency under Michigan Insurance law. The National Association of Insurance Commissioners ("NAIC") Accounting Practices and Procedures Manual, ("NAIC SAP") has been adopted as a component of prescribed or permitted practices by the state of Michigan.

A reconciliation of the Company's net income and capital and surplus between NAIC SAP and practices prescribed and permitted by the state of Michigan is shown below:

	SSAP #	F/S Page	F/S Line #	09/30/2022	12/31/2021
Net Income					
(1) State basis (Page 4, Line 32, Columns 2 & 4)	XXX	XXX	XXX	\$ (2,241)	\$
(2) State prescribed practices that are an increase / (decrease) from NAIC SAP:					
(3) State permitted practices that are an increase / (decrease) from NAIC SAP:					
(4) NAIC SAP (1-2-3=4)	XXX	XXX	XXX	<u>\$ (2,241)</u>	<u>\$</u>
Surplus					
(5) State basis (Page 3, Line 33, Columns 3 & 4)	XXX	XXX	XXX	\$ 1,610,759	\$
(6) State prescribed practices that are an increase / (decrease) from NAIC SAP:					
(7) State permitted practices that are an increase / (decrease) from NAIC SAP:					
(8) NAIC SAP (5-6-7=8)	XXX	XXX	XXX	<u>\$ 1,610,759</u>	<u>\$</u>

B. Use of Estimates in the Preparation of the Financial Statements

The preparation of financial statements in conformity with Statutory Accounting Principles requires management to make estimates and assumptions that affect the reported amounts of assets and liabilities. It also requires disclosures of contingent assets and liabilities at the date of the financial statements and the reported amounts of revenue and expenses during the period. Actual results could differ from those estimates.

C. Accounting Policy

The Company does not have any written premiums for 2022.

Expenses are charged to operations as incurred.

In addition, the Company uses the following accounting policies:

- (1) Short-term investments are stated at amortized cost.
- (2) The Company had no bonds. The Company does not own any mandatory convertible securities or SVO-identified bond ETFs reported on Schedule D-1.
- (3) The Company had no common stock investments.
- (4) The Company had no preferred stock investments.
- (5) The Company had no mortgage loans investments.
- (6) The Company had no Loan-backed securities.
- (7) The Company does not have any ownership in parents, subsidiaries or affiliates.
- (8) The Company had no joint ventures, partnership, or limited liability companies.
- (9) The Company had no derivatives.
- (10) The Company utilizes anticipated investment income as a factor in the premium deficiency calculation.
- (11) The Company did not have any unpaid losses and loss adjustment expenses.
- (12) The Company's capitalization policy has not changed.
- (13) The Company did not have any pharmaceutical rebate receivables.

D. Going Concern

Management has evaluated the Company's ability to continue as a going concern. There is no substantial doubt in its ability to continue as a going concern.

2. Accounting Changes and Corrections of Errors - None

3. Business Combinations and Goodwill

- A. Statutory Purchase Method - None
- B. Statutory Merger - None
- C. Assumption Reinsurance - None
- D. Impairment Loss - None

Notes to the Financial Statements

3. Business Combinations and Goodwill (Continued)

E. Subcomponents and Calculation of Adjusted Surplus and Total Admitted Goodwill - None

4. Discontinued Operations

- A. Discontinued Operation Disposed of or Classified as Held for Sale - None
- B. Change in Plan of Sale of Discontinued Operation - None
- C. Nature of Any Significant Continuing Involvement with Discontinued Operations After Disposal - None
- D. Equity Interest Retained in the Discontinued Operation After Disposal - None

5. Investments

- A. Mortgage Loans, including Mezzanine Real Estate Loans - None
- B. Debt Restructuring - None
- C. Reverse Mortgages - None
- D. Loan-Backed Securities - None
- E. Dollar Repurchase Agreements and/or Securities Lending Transactions - None
- F. Repurchase Agreements Transactions Accounted for as Secured Borrowing - None
- G. Reverse Repurchase Agreements Transactions Accounted for as Secured Borrowing - None
- H. Repurchase Agreements Transactions Accounted for as a Sale - None
- I. Reverse Repurchase Agreements Transactions Accounted for as a Sale - None
- J. Real Estate - None
- K. Low-Income Housing Tax Credits (LIHTC) - None
- L. Restricted Assets

(1) Restricted assets (including pledged)

Restricted Asset Category	(1) Total Gross (Admitted & Nonadmitted) Restricted from Current Year	(2) Total Gross (Admitted & Nonadmitted) Restricted From Prior Year	(3) Increase / (Decrease) (1 - 2)	(4) Total Current Year Nonadmitted Restricted	(5) Total Current Year Admitted Restricted (1 - 4)	(6) Gross (Admitted & Nonadmitted) Restricted to Total Assets	(7) Admitted Restricted to Total Admitted Assets
a. Subject to contractual obligation for which liability is not shown	\$	\$	\$	\$	\$	%	%
b. Collateral held under security lending agreements							
c. Subject to repurchase agreements							
d. Subject to reverse repurchase agreements							
e. Subject to dollar repurchase agreements							
f. Subject to dollar reverse repurchase agreements							
g. Placed under option contracts							
h. Letter stock or securities restricted as to sale - excluding FHLB capital stock							
i. FHLB capital stock							
j. On deposit with states	109,525		109,525		109,525	6.787	6.787
k. On deposit with other regulatory bodies							
l. Pledged as collateral to FHLB (including assets backing funding agreements)							
m. Pledged as collateral not captured in other categories							
n. Other restricted assets							
o. Total restricted assets	\$ 109,525	\$	\$ 109,525	\$	\$ 109,525	6.787 %	6.787 %

(2) Detail of assets pledged as collateral not captured in other categories (contracts that share similar characteristics, such as reinsurance and derivatives, are reported in the aggregate) - None

(3) Detail of other restricted assets (contracts that share similar characteristics, such as reinsurance and derivatives, are reported in the aggregate) - None

(4) Collateral received and reflected as assets within the reporting entity's financial statements - None

- M. Working Capital Finance Investments - None
- N. Offsetting and Netting of Assets and Liabilities - None
- O. 5GI Securities - None
- P. Short Sales - None
- Q. Prepayment Penalty and Acceleration Fees - None
- R. Reporting Entity's Share of Cash Pool by Asset type - None

6. Joint Ventures, Partnerships and Limited Liability Companies

- A. Investments in Joint Ventures, Partnerships or Limited Liability Companies that Exceed 10% of Admitted Assets - None
- B. Impaired Investments in Joint Ventures, Partnerships and Limited Liability Companies - None

Notes to the Financial Statements

7. Investment Income

A. Due and Accrued Income Excluded from Surplus

Due and accrued income was excluded from surplus that are over 90 days past due with the exception of mortgage loans in default.

B. Total Amount Excluded - None

8. Derivative Instruments

A. Derivatives under SSAP No. 86 - Derivatives - None

B. Derivatives under SSAP No. 108 - Derivative Hedging Variable Annuity Guarantees (Life/Fraternal Only) - None

9. Income Taxes

The statutory basis of accounting requires that the Company record deferred tax assets and liabilities for certain temporary differences between statutory basis income before federal income taxes, plus certain items recorded directly to surplus, and taxable income as reflected in the Company's federal income tax return, subject to certain limitations. There were no federal income taxes recorded or DTAs or DTLs recorded in 2022.

10. Information Concerning Parent, Subsidiaries, Affiliates and Other Related Parties

A. & B - The Company was formed on August 10, 2021 by Honest Medical Group LLC to write Medicare Advantage products in the state of Michigan. Honest Medical Group LLC contributed \$1,613,000 to the Company in 2022.

C. Transactions With Related Party Who Are Not Reported on Schedule Y - None

D. The Company has \$3,000 due to Honest Medical Group LLC for bank fees paid on its behalf.

E. On February 12, 2022, the Company entered into a Management Agreement with Honest Health Plan LLC. The agreement is not effective until the Company begins writing business.

F. Honest Medical Group LLC owns 100% interest in the Company. To the best of our knowledge, the existence of the control relationship and the related company transactions have not resulted in the operating results or the financial position of the reporting entity being significantly different from those that would have been obtained if the entities were autonomous.

G. Nature of Relationships that Could Affect Operations - None

H. Amount Deducted for Investment in Upstream Company - None

I. Detail of Investments in Affiliates Greater Than 10% of Admitted Assets - None

J. Write-Down for Impairments of Investments in Subsidiary Controlled or Affiliated Companies - None

K. Foreign Subsidiary Value Using CARVM - None

L. Downstream Holding Company Value Using Look-Through Method - None

M. All SCA Investments - None

N. Investment in Insurance SCAs - None

O. SCA and SSAP No. 48 Entity Loss Tracking - None

11. Debt

A. Debt, Including Capital Notes - None

B. FHLB (Federal Home Loan Bank) Agreements - None

12. Retirement Plans, Deferred Compensation, Postemployment Benefits and Compensated Absences and Other Postretirement Benefit Plans

A. Defined Benefit Plan - None

B. Investment Policies and Strategies of Plan Assets - None

C. Fair Value of Each Class of Plan Assets - None

D. Expected Long-Term Rate of Return for the Plan Assets - None

E. Defined Contribution Plans - None

F. Multiemployer Plans - None

G. Consolidated/Holding Company Plans - None

H. Postemployment Benefits and Compensated Absences - None

I. Impact of Medicare Modernization Act on Postretirement Benefits (INT 04-17) - None

13. Capital and Surplus, Dividend Restrictions and Quasi-Reorganizations

A. Outstanding Shares - None

B. Dividend Rate of Preferred Stock - None

C. Dividend Restrictions - None

D. Ordinary Dividends - None

E. Company Profits Paid as Ordinary Dividends - None

F. Surplus Restrictions - None

G. Surplus Advances - None

Notes to the Financial Statements

13. Capital and Surplus, Dividend Restrictions and Quasi-Reorganizations (Continued)

- H. Stock Held for Special Purposes - None
- I. Changes in Special Surplus Funds - None
- J. Unassigned Funds (Surplus) - None
- K. Company-Issued Surplus Debentures or Similar Obligations - None
- L. Impact of Any Restatement Due to Prior Quasi-Reorganizations - None
- M. Effective Date(s) of Quasi-Reorganizations in the Prior 10 Years - None

14. Liabilities, Contingencies and Assessments

- A. Contingent Commitments - None
- B. Assessments - None
- C. Gain Contingencies - None
- D. Claims Related Extra Contractual Obligation and Bad Faith Losses Stemming from Lawsuits - None
- E. Joint and Several Liabilities - None
- F. All Other Contingencies - None

15. Leases

- A. Lessee Operating Lease - None
- B. Lessor Leases - None

16. Information About Financial Instruments With Off-Balance-Sheet Risk And Financial Instruments With Concentrations of Credit Risk - None

17. Sale, Transfer and Servicing of Financial Assets and Extinguishments of Liabilities

- A. Transfers of Receivables Reported as Sales - None
- B. Transfer and Servicing of Financial Assets - None
- C. Wash Sales - None

18. Gain or Loss to the Reporting Entity from Uninsured Plans and the Uninsured Portion of Partially Insured Plans

- A. ASO Plans - None
- B. ASC Plans - None
- C. Medicare or Other Similarly Structured Cost Based Reimbursement Contract - None

19. Direct Premium Written/Produced by Managing General Agents/Third Party Administrators - None

20. Fair Value Measurements

- A. Fair Value Measurement

The Company’s financial assets and liabilities carried at fair value have been classified, for disclosure purposes, based on a hierarchy that prioritizes the inputs to valuation techniques used to measure fair value into three broad levels. The hierarchy gives the highest priority to fair values determined using unadjusted quoted prices in active markets for identical assets or liabilities (Level 1) and the lowest priority to fair values determined using unobservable inputs (Level 3). An asset’s or liability’s classification is determined based on the lowest level input that is significant to its measurement.

For example, a Level 3 fair value measurement may include inputs that are both observable (Levels 1 and 2) and unobservable (Level3). The levels of the fair value hierarchy are as follows:

- Level 1: Inputs are unadjusted, quoted prices for identical assets or liabilities in active markets at the measurement date.
- Level 2: Inputs are other than quoted prices included in level 1 that are observable for the asset or liability through corroboration with market data at the measurement date.
- Level 3: Inputs are unobservable and reflect management’s best estimate of what market participants would use in pricing the asset or liability at the measurement date.

Fair value of actively traded fixed-income and equity securities is based on quoted market prices. Fair value of inactive traded fixed-income securities is based on quoted market prices of identical or similar securities based on observable inputs like interest rates using a market valuation approach is generally classified as Level 2. Investments measured based on the practical expedient being net asset value (NAV), based on the NAV of the fund as provided for in the audited financial statements and other fund reporting, are generally classified as Level 3.

(1) Fair value measurements at reporting date

Description for each class of asset or liability	Level 1	Level 2	Level 3	Net Asset Value (NAV)	Total
a. Assets at fair value					
Exempt MM Mutual Fund.....	\$ 1,234	\$	\$	\$	\$ 1,234
Total assets at fair value/NAV.....	<u>\$ 1,234</u>	<u>\$</u>	<u>\$</u>	<u>\$</u>	<u>\$ 1,234</u>
b. Liabilities at fair value					
Total liabilities at fair value.....	<u>\$</u>	<u>\$</u>	<u>\$</u>	<u>\$</u>	<u>\$</u>

(2) Fair value measurements in Level 3 of the fair value hierarchy - None

(3) The Company’s policy for determining when transfers between levels are recognized is determined at the end of the reporting period.

Notes to the Financial Statements

20. Fair Value Measurements (Continued)

(4) The Company has not valued any securities at a Level 2 or 3.

(5) Derivatives - None

B. Other Fair Value Disclosures - None

C. Fair Values for All Financial Instruments by Level 1, 2 and 3

Type of Financial Instrument	Aggregate Fair Value	Admitted Assets	Level 1	Level 2	Level 3	Net Asset Value (NAV)	Not Practicable (Carrying Value)
Short-term Investments	\$ 108,769	\$ 109,525	\$ 108,769	\$	\$	\$	\$
Cash Equivalents	1,234	1,234	1,234				

D. Not Practicable to Estimate Fair Value - None

E. Nature and Risk of Investments Reported at NAV - None

21. Other Items

A. Unusual or Infrequent Items - None

B. Troubled Debt Restructuring - None

C. Other Disclosures - None

D. Business Interruption Insurance Recoveries - None

E. State Transferable and Non-Transferable Tax Credits - None

F. Subprime-Mortgage-Related Risk Exposure - None

G. Retained Assets - None

H. Insurance-Linked Securities (ILS) Contracts - None

I. The Amount That Could Be Realized on Life Insurance Where the Reporting Entity is Owner and Beneficiary or Has Otherwise Obtained Rights to Control the Policy - None

22. Events Subsequent

Type I. – Recognized Subsequent Events

Subsequent events have been considered through November 15, 2022 for the statutory statement issued on September 30, 2022.

None

Type II. – Nonrecognized Subsequent Events

Subsequent events have been considered through November 15, 2022 for the statutory statement issued on September 30, 2022.

None

23. Reinsurance

A. Ceded Reinsurance Report - None

B. Uncollectible Reinsurance - None

C. Commutation of Reinsurance Reflected in Income and Expenses - None

D. Certified Reinsurer Rating Downgraded or Status Subject to Revocation - None

E. Reinsurance Credit - None

24. Retrospectively Rated Contracts & Contracts Subject to Redetermination

A. Method Used to Estimate - None

B. Method Used to Record - None

C. Amount and Percent of Net Retrospective Premiums - None

D. Medical Loss Ratio Rebates Required Pursuant to the Public Health Service Act - None

E. Risk-Sharing Provisions of the Affordable Care Act (ACA)

(1) Accident and health insurance premium subject to the Affordable Care Act risk-sharing provisions

Did the reporting entity write accident and health insurance premium which is subject to the Affordable Care Act risk sharing provisions? NO

(2) Impact of Risk-Sharing Provisions of the Affordable Care Act on admitted assets, liabilities and revenue for the current year - None

(3) Roll-forward of prior year ACA risk-sharing provisions for the following asset (gross of any nonadmission) and liability balances, along with the reasons for adjustments to prior year balance - None

(4) Roll-forward of risk corridors asset and liability balances by program benefit year - None

(5) ACA risk corridors receivable as of reporting date - None

Notes to the Financial Statements

25. Change in Incurred Claims and Claim Adjustment Expenses

- A. Reasons for Changes in the Provision for Incurred Claim and Claim Adjustment Expenses Attributable to Insured Events of Prior Years - None
- B. Significant Changes in Methodologies and Assumptions Used in Calculating the Liability for Unpaid Claims and Claim Adjustment Expenses - None

26. Intercompany Pooling Arrangements - None

27. Structured Settlements - None

28. Health Care Receivables

- A. Pharmaceutical Rebate Receivables - None
- B. Risk-Sharing Receivables - None

29. Participating Policies - None

30. Premium Deficiency Reserves - None

31. Anticipated Salvage and Subrogation - None

GENERAL INTERROGATORIES
PART 1 - COMMON INTERROGATORIES

GENERAL

- 1.1 Did the reporting entity experience any material transactions requiring the filing of Disclosure of Material Transactions with the State of Domicile, as required by the Model Act? YES
- 1.2 If yes, has the report been filed with the domiciliary state? YES
- 2.1 Has any change been made during the year of this statement in the charter, by-laws, articles of incorporation, or deed of settlement of the reporting entity? NO
- 2.2 If yes, date of change:
- 3.1 Is the reporting entity a member of an Insurance Holding Company System consisting of two or more affiliated persons, one or more of which is an insurer? YES
If yes, complete Schedule Y, Parts 1 and 1A.
- 3.2 Have there been any substantial changes in the organizational chart since the prior quarter end? NO
- 3.3 If the response to 3.2 is yes, provide a brief description of those changes.
- 3.4 Is the reporting entity publicly traded or a member of a publicly traded group? NO
- 3.5 If the response to 3.4 is yes, provide the CIK (Central Index Key) code issued by the SEC for the entity/group.
- 4.1 Has the reporting entity been a party to a merger or consolidation during the period covered by this statement? NO
- 4.2 If yes, provide the name of entity, NAIC Company Code, and state of domicile (use two letter state abbreviation) for any entity that has ceased to exist as a result of the merger or consolidation.

1 Name of Entity	2 NAIC Company Code	3 State of Domicile

- 5. If the reporting entity is subject to a management agreement, including third-party administrator(s), managing general agent(s), attorney-in-fact, or similar agreement, have there been any significant changes regarding the terms of the agreement or principals involved? NO
If yes, attach an explanation.
- 6.1 State as of what date the latest financial examination of the reporting entity was made or is being made.
- 6.2 State the as of date that the latest financial examination report became available from either the state of domicile or the reporting entity. This date should be the date of the examined balance sheet and not the date the report was completed or released.
- 6.3 State as of what date the latest financial examination report became available to other states or the public from either the state of domicile or the reporting entity. This is the release date or completion date of the examination report and not the date of the examination (balance sheet date).
- 6.4 By what department or departments?
- 6.5 Have all financial statement adjustments within the latest financial examination report been accounted for in a subsequent financial statement filed with Departments? N/A
- 6.6 Have all of the recommendations within the latest financial examination report been complied with? N/A
- 7.1 Has this reporting entity had any Certificates of Authority, licenses or registrations (including corporate registration, if applicable) suspended or revoked by any governmental entity during the reporting period? NO
- 7.2 If yes, give full information
- 8.1 Is the company a subsidiary of a bank holding company regulated by the Federal Reserve Board? NO
- 8.2 If response to 8.1 is yes, please identify the name of the bank holding company.
- 8.3 Is the company affiliated with one or more banks, thrifts or securities firms? NO
- 8.4 If response to 8.3 is yes, please provide below the names and location (city and state of the main office) of any affiliates regulated by a federal regulatory services agency [i.e. the Federal Reserve Board (FRB), the Office of the Comptroller of the Currency (OCC), the Federal Deposit Insurance Corporation (FDIC) and the Securities Exchange Commission (SEC)] and identify the affiliates primary federal regulator.

1 Affiliate Name	2 Location (City, State)	3 FRB	4 OCC	5 FDIC	6 SEC

- 9.1 Are the senior officers (principal executive officer, principal financial officer, principal accounting officer or controller, or persons performing similar functions) of the reporting entity subject to a code of ethics, which includes the following standards? YES
 - (a) Honest and ethical conduct, including the ethical handling of actual or apparent conflicts of interest between personal and professional relationships;
 - (b) Full, fair, accurate, timely and understandable disclosure in the periodic reports required to be filed by the reporting entity;
 - (c) Compliance with applicable governmental laws, rules and regulations;
 - (d) The prompt internal reporting of violations to an appropriate person or persons identified in the code; and
 - (e) Accountability for adherence to the code.
- 9.11 If the response to 9.1 is No, please explain:
- 9.2 Has the code of ethics for senior managers been amended? NO
- 9.21 If the response to 9.2 is Yes, provide information related to amendment(s).
- 9.3 Have any provisions of the code of ethics been waived for any of the specified officers? NO
- 9.31 If the response to 9.3 is Yes, provide the nature of any waiver(s).

FINANCIAL

- 10.1 Does the reporting entity report any amounts due from parent, subsidiaries or affiliates on Page 2 of this statement? NO
- 10.2 If yes, indicate any amounts receivable from parent included in the Page 2 amount: \$

INVESTMENT

- 11.1 Were any of the stocks, bonds, or other assets of the reporting entity loaned, placed under option agreement, or otherwise made available for use by another person? (Exclude securities under securities lending agreements.) NO
- 11.2 If yes, give full and complete information relating thereto:
- 12. Amount of real estate and mortgages held in other invested assets in Schedule BA: \$
- 13. Amount of real estate and mortgages held in short-term investments: \$
- 14.1 Does the reporting entity have any investments in parent, subsidiaries and affiliates? NO
- 14.2 If yes, please complete the following:

GENERAL INTERROGATORIES
PART 1 - COMMON INTERROGATORIES

	1	2
	Prior Year-End Book / Adjusted Carrying Value	Current Quarter Book / Adjusted Carrying Value
14.21 Bonds.....	\$.....	\$.....
14.22 Preferred Stock.....		
14.23 Common Stock.....		
14.24 Short-Term Investments.....		
14.25 Mortgage Loans on Real Estate.....		
14.26 All Other.....		
14.27 Total Investment in Parent, Subsidiaries and Affiliates (Subtotal Lines 14.21 to 14.26).....		
14.28 Total Investment in Parent included in Lines 14.21 to 14.26 above.....		

- 15.1 Has the reporting entity entered into any hedging transactions reported on Schedule DB?..... NO.....
- 15.2 If yes, has a comprehensive description of the hedging program been made available to the domiciliary state?..... N/A.....
If no, attach a description with this statement.

16. For the reporting entity's security lending program, state the amount of the following as of the current statement date:
- 16.1 Total fair value of reinvested collateral assets reported on Schedule DL, Parts 1 and 2..... \$.....
- 16.2 Total book adjusted/carrying value of reinvested collateral assets reported on Schedule DL, Parts 1 and 2..... \$.....
- 16.3 Total payable for securities lending reported on the liability page..... \$.....

17. Excluding items in Schedule E - Part 3 - Special Deposits, real estate, mortgage loans and investments held physically in the reporting entity's offices, vaults or safety deposit boxes, were all stocks, bonds and other securities, owned throughout the current year held pursuant to a custodial agreement with a qualified bank or trust company in accordance with Section 1, III - General Examination Considerations, F. Outsourcing of Critical Functions, Custodial or Safekeeping Agreements of the NAIC Financial Condition Examiners Handbook?..... NO.....

- 17.1 For all agreements that comply with the requirements of the NAIC Financial Condition Examiners Handbook, complete the following:
- | 1 | 2 |
|----------------------|-------------------|
| Name of Custodian(s) | Custodian Address |
| | |

- 17.2 For all agreements that do not comply with the requirements of the NAIC Financial Condition Examiners Handbook, provide the name, location and a complete explanation:
- | 1 | 2 | 3 |
|---------|-------------|-------------------------|
| Name(s) | Location(s) | Complete Explanation(s) |
| | | |

- 17.3 Have there been any changes, including name changes, in the custodian(s) identified in 17.1 during the current quarter?..... NO.....

- 17.4 If yes, give full and complete information relating thereto:
- | 1 | 2 | 3 | 4 |
|---------------|---------------|----------------|--------|
| Old Custodian | New Custodian | Date of Change | Reason |
| | | | |

- 17.5 Investment management - Identify all investment advisors, investment managers, broker/dealers, including individuals that have the authority to make investment decisions on behalf of the reporting entity. For assets that are managed internally by employees of the reporting entity, note as such. ["...that have access to the investment accounts"; "...handle securities"]
- | 1 | 2 |
|----------------------------|-------------|
| Name of Firm or Individual | Affiliation |
| | |

- 17.5097 For those firms/individuals listed in the table for Question 17.5, do any firms/individuals unaffiliated with the reporting entity (i.e., designated with a "U") manage more than 10% of the reporting entity's invested assets?..... NO.....
- 17.5098 For firms/individuals unaffiliated with the reporting entity (i.e., designated with a "U") listed in the table for Question 17.5, does the total assets under management aggregate to more than 50% of the reporting entity's invested assets?..... NO.....

- 17.6 For those firms or individuals listed in the table for 17.5 with an affiliation code of "A" (affiliated) or "U" (unaffiliated), provide the information for the table below.
- | 1 | 2 | 3 | 4 | 5 |
|----------------------------------------|----------------------------|-------------------------------|-----------------|---------------------------------------------|
| Central Registration Depository Number | Name of Firm or Individual | Legal Entity Identifier (LEI) | Registered With | Investment Management Agreement (IMA) Filed |
| | | | | |

GENERAL INTERROGATORIES
PART 1 - COMMON INTERROGATORIES

- 18.1 Have all the filing requirements of the Purposes and Procedures Manual of the NAIC Investment Analysis Office been followed?.....YES.....
- 18.2 If no, list exceptions:
-
19. By self-designating 5GI securities, the reporting entity is certifying the following elements for each self-designated 5GI security:
- a. Documentation necessary to permit a full credit analysis of the security does not exist or an NAIC CRP credit rating for an FE or PL security is not available.
 - b. Issuer or obligor is current on all contracted interest and principal payments.
 - c. The insurer has an actual expectation of ultimate payment of all contracted interest and principal.
- Has the reporting entity self-designated 5GI securities?.....NO.....
20. By self-designating PLGI securities, the reporting entity is certifying the following elements of each self-designated PLGI security:
- a. The security was purchased prior to January 1, 2018.
 - b. The reporting entity is holding capital commensurate with the NAIC Designation reported for the security.
 - c. The NAIC Designation was derived from the credit rating assigned by an NAIC CRP in its legal capacity as a NRSRO which is shown on a current private letter rating held by the insurer and available for examination by state insurance regulators.
 - d. The reporting entity is not permitted to share this credit rating of the PL security with the SVO.
- Has the reporting entity self-designated PLGI securities?.....NO.....
21. By assigning FE to a Schedule BA non-registered private fund, the reporting entity is certifying the following elements of each self-designated FE fund:
- a. The shares were purchased prior to January 1, 2019.
 - b. The reporting entity is holding capital commensurate with the NAIC Designation reported for the security.
 - c. The security had a public credit rating(s) with annual surveillance assigned by an NAIC CRP in its legal capacity as an NRSRO prior to January 1, 2019.
 - d. The fund only or predominantly holds bonds in its portfolio.
 - e. The current reported NAIC Designation was derived from the public credit rating(s) with annual surveillance assigned by an NAIC CRP in its legal capacity as an NRSRO.
 - f. The public credit rating(s) with annual surveillance assigned by an NAIC CRP has not lapsed.
- Has the reporting entity assigned FE to Schedule BA non-registered private funds that complied with the above criteria?.....NO.....

GENERAL INTERROGATORIES

PART 2 – HEALTH

- 1. Operating Percentages:
 - 1.1 A&H loss percent%
 - 1.2 A&H cost containment percent%
 - 1.3 A&H expense percent excluding cost containment expenses%
- 2.1 Do you act as a custodian for health savings accounts? NO
- 2.2 If yes, please provide the amount of custodial funds held as of the reporting date. \$
- 2.3 Do you act as an administrator for health savings accounts? NO
- 2.4 If yes, please provide the balance of the funds administered as of the reporting date. \$
- 3. Is the reporting entity licensed or chartered, registered, qualified, eligible or writing business in at least two states? NO
- 3.1 If no, does the reporting entity assume reinsurance business that covers risks residing in at least one state other than the state of domicile of the reporting entity? NO

SCHEDULE S - CEDED REINSURANCE
Showing All New Reinsurance Treaties - Current Year to Date

1	2	3	4	5	6	7	8	9	10
NAIC Company Code	ID Number	Effective Date	Name of Reinsurer	Domiciliary Jurisdiction	Type of Reinsurance Ceded	Type of Business Ceded	Type of Reinsurer	Certified Reinsurer Rating (1 through 6)	Effective Date of Certified Reinsurer Rating

NONE

SCHEDULE T – PREMIUMS AND OTHER CONSIDERATIONS

Current Year to Date - Allocated by States and Territories

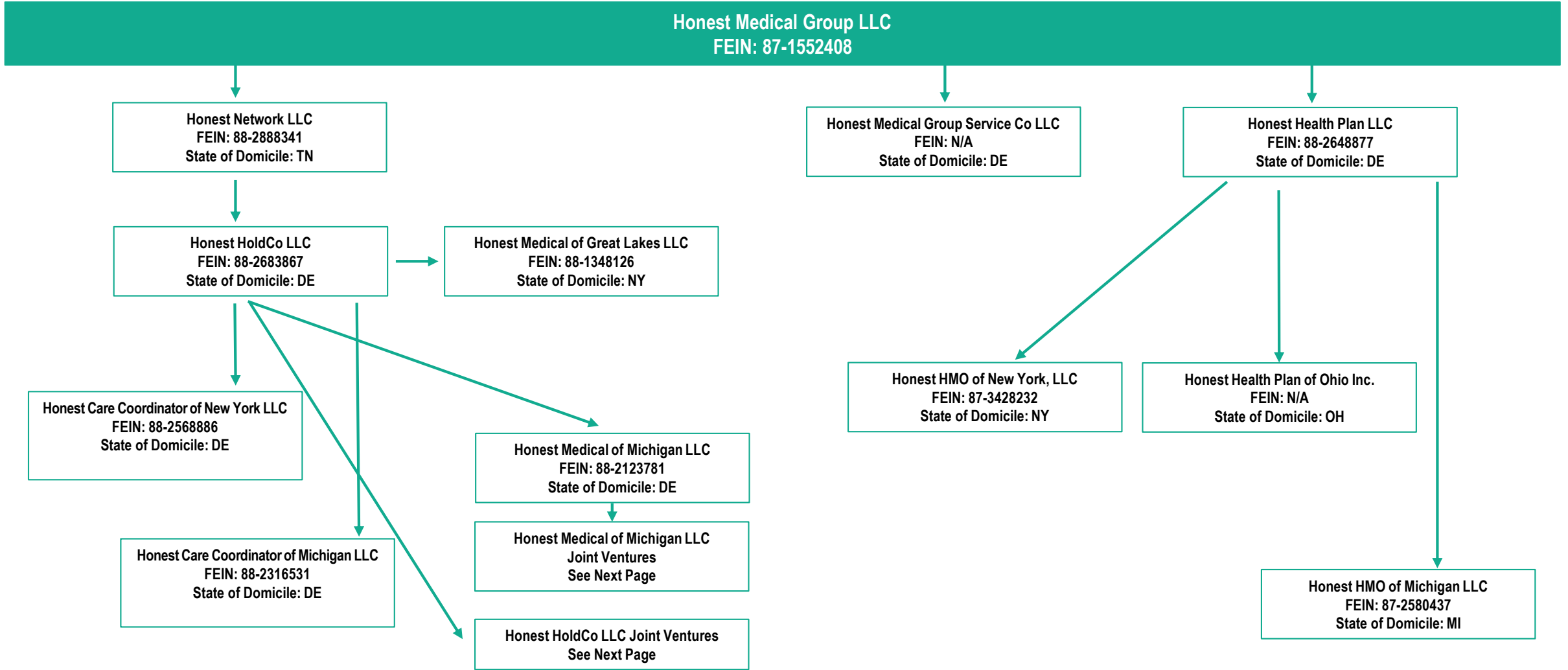
		Direct Business Only									
		1	2	3	4	5	6	7	8	9	10
States, Etc.		Active Status (a)	Accident & Health Premiums, Including Policy, Membership and Other Fees	Medicare Title XVIII	Medicaid Title XIX	CHIP Title XXI	Federal Employees Health Benefits Plan Premiums	Life & Annuity Premiums & Other Considerations	Property/Casualty Premiums	Total Columns 2 Through 8	Deposit-Type Contracts
1.	Alabama	AL	N								
2.	Alaska	AK	N								
3.	Arizona	AZ	N								
4.	Arkansas	AR	N								
5.	California	CA	N								
6.	Colorado	CO	N								
7.	Connecticut	CT	N								
8.	Delaware	DE	N								
9.	District of Columbia	DC	N								
10.	Florida	FL	N								
11.	Georgia	GA	N								
12.	Hawaii	HI	N								
13.	Idaho	ID	N								
14.	Illinois	IL	N								
15.	Indiana	IN	N								
16.	Iowa	IA	N								
17.	Kansas	KS	N								
18.	Kentucky	KY	N								
19.	Louisiana	LA	N								
20.	Maine	ME	N								
21.	Maryland	MD	N								
22.	Massachusetts	MA	N								
23.	Michigan	MI	L								
24.	Minnesota	MN	N								
25.	Mississippi	MS	N								
26.	Missouri	MO	N								
27.	Montana	MT	N								
28.	Nebraska	NE	N								
29.	Nevada	NV	N								
30.	New Hampshire	NH	N								
31.	New Jersey	NJ	N								
32.	New Mexico	NM	N								
33.	New York	NY	N								
34.	North Carolina	NC	N								
35.	North Dakota	ND	N								
36.	Ohio	OH	N								
37.	Oklahoma	OK	N								
38.	Oregon	OR	N								
39.	Pennsylvania	PA	N								
40.	Rhode Island	RI	N								
41.	South Carolina	SC	N								
42.	South Dakota	SD	N								
43.	Tennessee	TN	N								
44.	Texas	TX	N								
45.	Utah	UT	N								
46.	Vermont	VT	N								
47.	Virginia	VA	N								
48.	Washington	WA	N								
49.	West Virginia	WV	N								
50.	Wisconsin	WI	N								
51.	Wyoming	WY	N								
52.	American Samoa	AS	N								
53.	Guam	GU	N								
54.	Puerto Rico	PR	N								
55.	US Virgin Islands	VI	N								
56.	Northern Mariana Islands	MP	N								
57.	Canada	CAN	N								
58.	Aggregate Other Alien	OT	XXX								
59.	Subtotal		XXX								
60.	Reporting entity contributions for employee benefits plans		XXX								
61.	Total (Direct Business)		XXX								
Details of Write-Ins											
58001.			XXX								
58002.			XXX								
58003.			XXX								
58998.	Summary of remaining write-ins for Line 58 from overflow page		XXX								
58999.	Totals (Lines 58001 through 58003 plus 58998) (Line 58 above)		XXX								

(a) Active Status Counts

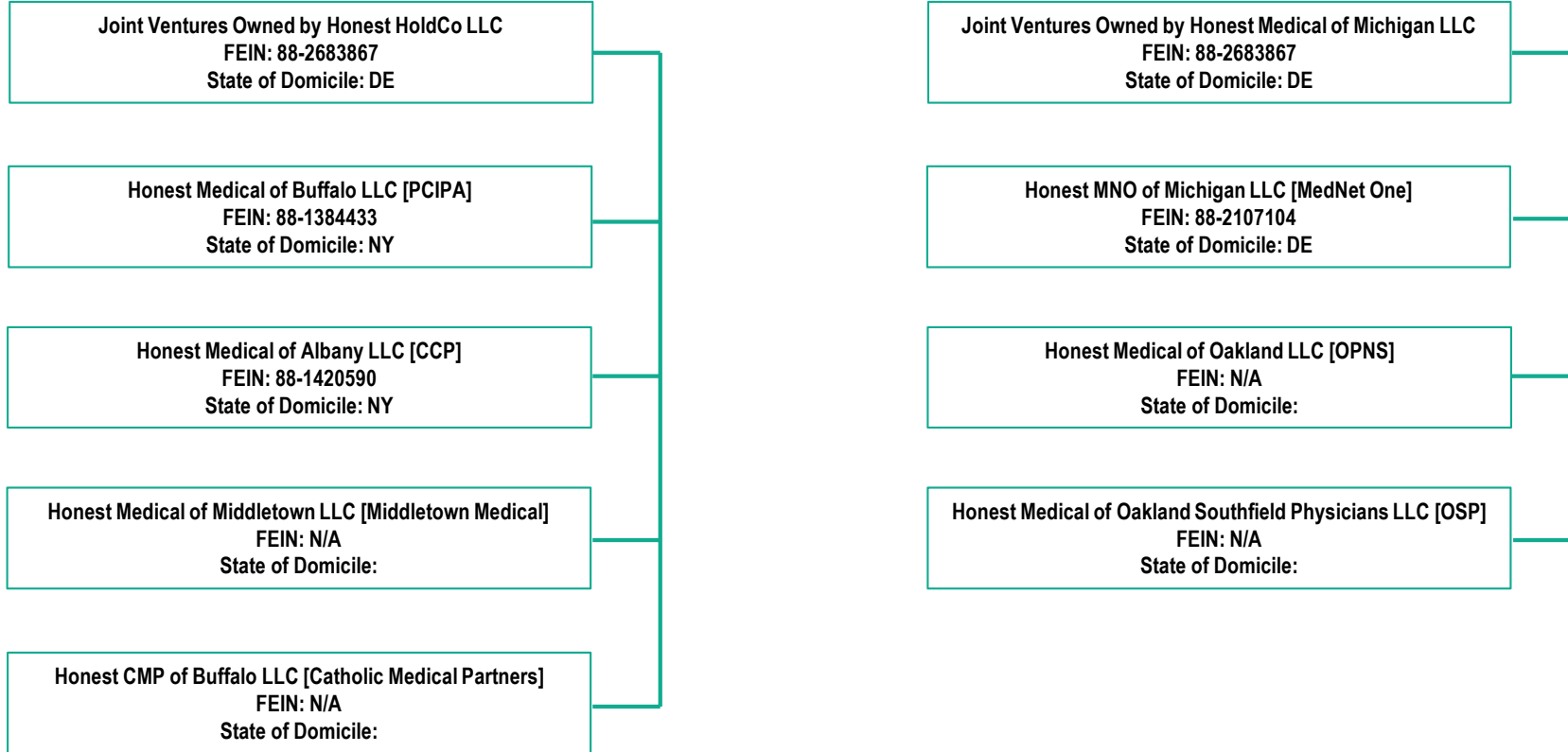
L – Licensed or Chartered - Licensed insurance carrier or domiciled RRG 1 R – Registered - Non-domiciled RRGs
 E – Eligible - Reporting entities eligible or approved to write surplus lines in the state Q – Qualified - Qualified or accredited reinsurer
 N – None of the above - Not allowed to write business in the state 56

SCHEDULE Y - INFORMATION CONCERNING ACTIVITIES OF INSURER MEMBERS OF A HOLDING COMPANY GROUP

PART 1 - ORGANIZATIONAL CHART



SCHEDULE Y - INFORMATION CONCERNING ACTIVITIES OF INSURER MEMBERS OF A HOLDING COMPANY GROUP
PART 1 - ORGANIZATIONAL CHART



SCHEDULE Y

PART 1A - DETAIL OF INSURANCE HOLDING COMPANY SYSTEM

1	2	3	4	5	6	7	8	9	10	11	12	13	14	15	16
Group Code	Group Name	NAIC Company Code	ID Number	Federal RSSD	CIK	Name of Securities Exchange if Publicly Traded (U.S. or International)	Names of Parent, Subsidiaries Or Affiliates	Domiciliary Location	Relationship to Reporting Entity	Directly Controlled by (Name of Entity/Person)	Type of Control (Ownership, Board, Management, Attorney-in-Fact, Influence, Other)	If Control is Ownership Provide Percentage	Ultimate Controlling Entity(ies) / Person(s)	Is an SCA Filing Required? (Yes/No)	*
			87-1552408				Honest Medical Group LLC	DE	UIP				Honest Medical Group LLC	NO	
			88-2648877				Honest Health Plan LLC	DE	UDP	Honest Medical Group LLC	Ownership	100.000	Honest Medical Group LLC	NO	
		17291	87-2580437				Honest HMO of Michigan LLC	MI	RE	Honest Health Plan LLC	Ownership	100.000	Honest Medical Group LLC	NO	
			87-3428232				Honest HMO of New York, LLC	NY	NIA	Honest Health Plan LLC	Ownership	100.000	Honest Medical Group LLC	NO	
							Honest Health Plan of Ohio Inc.	OH	NIA	Honest Health Plan LLC	Ownership	100.000	Honest Medical Group LLC	NO	
							Honest Medical Group Service Co LLC	DE	NIA	Honest Medical Group LLC	Ownership	100.000	Honest Medical Group LLC	NO	
			92-0524819				Honest Network LLC	DE	NIA	Honest Medical Group LLC	Ownership	100.000	Honest Medical Group LLC	NO	
			88-2888341				Honest HoldCo LLC	DE	NIA	Honest Network LLC	Ownership	100.000	Honest Medical Group LLC	NO	
			88-2683867				Honest Medical of Great Lakes LLC	NY	NIA	Honest HoldCo LLC	Ownership	100.000	Honest Medical Group LLC	NO	
			88-1348126				Honest Care Coordinator of New York LLC	NY	NIA	Honest HoldCo LLC	Ownership	100.000	Honest Medical Group LLC	NO	
			88-2568886				Honest Care Coordinator of Michigan LLC	DE	NIA	Honest HoldCo LLC	Ownership	100.000	Honest Medical Group LLC	NO	
			88-2316531				Honest Medical of Michigan LLC	DE	NIA	Honest HoldCo LLC	Ownership	80.100	Honest Medical Group LLC	NO	
			88-2123781				Honest Medical of Buffalo LLC	NY	NIA	Honest HoldCo LLC	Ownership	50.000	Honest Medical Group LLC	NO	
			88-1384433				Honest Medical of Albany LLC	NY	NIA	Honest HoldCo LLC	Ownership	50.000	Honest Medical Group LLC	NO	
			88-1420590				Honest Medical of Brunswick LLC	DE	NIA	Honest HoldCo LLC	Ownership	50.000	Honest Medical Group LLC	NO	
			88-2882012				Honest Medical of Middletown LLC	DE	NIA	Honest HoldCo LLC	Ownership	50.000	Honest Medical Group LLC	NO	
			92-0524819				Honest CMP of Buffalo LLC	DE	NIA	Honest HoldCo LLC	Ownership	50.000	Honest Medical Group LLC	NO	
							Honest MNO of Michigan LLC	DE	NIA	Honest Medical of Michigan LLC	Ownership	50.000	Honest Medical Group LLC	NO	
			88-2107104				Honest Medical of Oakland LLC	DE	NIA	Honest Medical of Michigan LLC	Ownership	50.000	Honest Medical Group LLC	NO	
			92-0482546				Honest Medical of Oakland Southfield Physicians LLC	DE	NIA	Honest Medical of Michigan LLC	Ownership	50.000	Honest Medical Group LLC	NO	
			92-0511899				Honest Medical of Great Lakes LLC	DE	NIA	Honest Medical of Michigan LLC	Ownership	50.000	Honest Medical Group LLC	NO	
Asterisk		Explanation													

SUPPLEMENTAL EXHIBITS AND SCHEDULES INTERROGATORIES

The following supplemental reports are required to be filed as part of your statement filing. However, in the event that your company does not transact the type of business for which the special report must be filed, your response of **NO** to the specific interrogatory will be accepted in lieu of filing a "NONE" report and a bar code will be printed below. If the supplement is required of your company but is not being filed for whatever reason enter **SEE EXPLANATION** and provide an explanation following the interrogatory questions.

	Response
1. Will the Medicare Part D Coverage Supplement be filed with the state of domicile and the NAIC with this statement?.....	NO
August Filing	
2. Will the regulator-only (non-public) Communication of Internal Control Related Matters Noted in Audit be filed with the state of domicile and electronically with the NAIC (as a regulator-only non-public document) by August 1? The response for 1st and 3rd quarters should be N/A. A NO response resulting with a bar code is only appropriate in the 2nd quarter.....	N/A

EXPLANATION:

1.
2.

BARCODES:

1.  1 7 2 3 1 2 0 2 2 3 6 5 0 0 0 3

- 2.

OVERFLOW PAGE FOR WRITE-INS

SCHEDULE A – VERIFICATION

Real Estate

		1	2
		Year to Date	Prior Year Ended December 31
1.	Book/adjusted carrying value, December 31 of prior year.....		
2.	Cost of acquired:		
2.1	Actual cost at time of acquisition.....		
2.2	Additional investment made after acquisition.....		
3.	Current year change in encumbrances.....		
4.	Total gain (loss) on disposals.....		
5.	Deduct amounts received on disposals.....		
6.	Total foreign exchange change in book / adjusted carrying value.....		
7.	Deduct current year's other-than-temporary impairment recognized.....		
8.	Deduct current year's depreciation.....		
9.	Book/adjusted carrying value at the end of current period (Lines 1+2+3+4-5+6-7-8).....		
10.	Deduct total nonadmitted amounts.....		
11.	Statement value at end of current period (Line 9 minus Line 10).....		

NONE

SCHEDULE B – VERIFICATION

Mortgage Loans

		1	2
		Year to Date	Prior Year Ended December 31
1.	Book value/recorded investment excluding accrued interest, December 31 of prior year.....		
2.	Cost of acquired:		
2.1	Actual cost at time of acquisition.....		
2.2	Additional investment made after acquisition.....		
3.	Capitalized deferred interest and other.....		
4.	Accrual of discount.....		
5.	Unrealized valuation increase (decrease).....		
6.	Total gain (loss) on disposals.....		
7.	Deduct amounts received on disposals.....		
8.	Deduct amortization of premium and mortgage interest points and comm.....		
9.	Total foreign exchange change in book value/recorded investment excluding accrued interest.....		
10.	Deduct current year's other-than-temporary impairment recognized.....		
11.	Book value/recorded investment excluding accrued interest at end of current period (Lines 1+2+3+4+5+6-7-8+9-10).....		
12.	Total valuation allowance.....		
13.	Subtotal (Line 11 plus Line 12).....		
14.	Deduct total nonadmitted amounts.....		
15.	Statement value at end of current period (Line 13 minus Line 14).....		

NONE

SCHEDULE BA - VERIFICATION

Other Long-Term Invested Assets

		1	2
		Year to Date	Prior Year Ended December 31
1.	Book/adjusted carrying value, December 31 of prior year.....		
2.	Cost of acquired:		
2.1	Actual cost at time of acquisition.....		
2.2	Additional investment made after acquisition.....		
3.	Capitalized deferred interest and other.....		
4.	Accrual of discount.....		
5.	Unrealized valuation increase (decrease).....		
6.	Total gain (loss) on disposals.....		
7.	Deduct amounts received on disposals.....		
8.	Deduct amortization of premium and depreciation.....		
9.	Total foreign exchange change in book / adjusted carrying value.....		
10.	Deduct current year's other-than-temporary impairment recognized.....		
11.	Book/adjusted carrying value at end of current period (Lines 1+2+3+4+5+6-7-8+9-10).....		
12.	Deduct total nonadmitted amounts.....		
13.	Statement value at end of current period (Line 11 minus Line 12).....		

NONE

SCHEDULE D - VERIFICATION

Bonds and Stocks

		1	2
		Year to Date	Prior Year Ended December 31
1.	Book/adjusted carrying value of bonds and stocks, December 31 of prior year.....		
2.	Cost of bonds and stocks acquired.....		
3.	Accrual of discount.....		
4.	Unrealized valuation increase (decrease).....		
5.	Total gain (loss) on disposals.....		
6.	Deduct consideration for bonds and stocks disposed of.....		
7.	Deduct amortization of premium.....		
8.	Total foreign exchange change in book / adjusted carrying value.....		
9.	Deduct current year's other-than-temporary impairment recognized.....		
10.	Total investment income recognized as a result of prepayment penalties and/or acceleration fees.....		
11.	Book/adjusted carrying value at end of current period (Lines 1+2+3+4+5-6-7+8-9+10).....		
12.	Deduct total nonadmitted amounts.....		
13.	Statement value at end of current period (Line 11 minus Line 12).....		

NONE

SCHEDULE D – PART 1B

Showing the Acquisitions, Dispositions and Non-Trading Activity
During the Current Quarter for all Bonds and Preferred Stock by NAIC Designation

NAIC Designation	1 Book / Adjusted Carrying Value Beginning of Current Quarter	2 Acquisitions During Current Quarter	3 Dispositions During Current Quarter	4 Non-Trading Activity During Current Quarter	5 Book / Adjusted Carrying Value End of First Quarter	6 Book / Adjusted Carrying Value End of Second Quarter	7 Book / Adjusted Carrying Value End of Third Quarter	8 Book / Adjusted Carrying Value December 31 Prior Year
Bonds								
1. NAIC 1 (a)	109,157			369	108,793	109,157	109,525	
2. NAIC 2 (a)								
3. NAIC 3 (a)								
4. NAIC 4 (a)								
5. NAIC 5 (a)								
6. NAIC 6 (a)								
7. Total Bonds	109,157			369	108,793	109,157	109,525	
Preferred Stock								
8. NAIC 1								
9. NAIC 2								
10. NAIC 3								
11. NAIC 4								
12. NAIC 5								
13. NAIC 6								
14. Total Preferred Stock								
15. Total Bonds & Preferred Stock	109,157			369	108,793	109,157	109,525	

(a) Book/Adjusted Carrying Value column for the end of the current reporting period includes the following amount of short-term and cash equivalent bonds by NAIC designation:
NAIC 1 \$ 109,525; NAIC 2 \$; NAIC 3 \$; NAIC 4 \$; NAIC 5 \$; NAIC 6 \$

SCHEDULE DA - PART 1

Short-Term Investments

	1	2	3	4	5
	Book / Adjusted Carrying Value	Par Value	Actual Cost	Interest Collected Year To Date	Paid for Accrued Interest Year To Date
770999999 Total	109,525	XXX	108,769		

SCHEDULE DA - VERIFICATION

Short-Term Investments

	1	2
	Year to Date	Prior Year Ended December 31
1. Book/adjusted carrying value, December 31 of prior year		
2. Cost of short-term investments acquired	108,769	
3. Accrual of discount	756	
4. Unrealized valuation increase (decrease)		
5. Total gain (loss) on disposals		
6. Deduct consideration received on disposals		
7. Deduct amortization of premium		
8. Total foreign exchange change in book / adjusted carrying value		
9. Deduct current year's other-than-temporary impairment recognized		
10. Book/adjusted carrying value at end of current period (Lines 1+2+3+4+5-6-7+8-9)	109,525	
11. Deduct total nonadmitted amounts		
12. Statement value at end of current period (Line 10 minus Line 11)	109,525	

Quarterly Statement as of September 30, 2022 of the Honest HMO of Michigan LLC

(SI-04) Schedule DB - Part A - Verification - Options, Caps, Floors, Collars, Swaps and Forwards

NONE

(SI-04) Schedule DB - Part B - Verification - Futures Contracts

NONE

(SI-05) Schedule DB - Part C - Section 1

NONE

(SI-06) Schedule DB - Part C - Section 2

NONE

(SI-07) Schedule DB - Verification

NONE

SCHEDULE E – PART 2 – VERIFICATION
(Cash Equivalents)

	1	2
	Year to Date	Prior Year Ended December 31
1. Book/adjusted carrying value, December 31 of prior year.....		
2. Cost of cash equivalents acquired.....	220,004	
3. Accrual of discount.....		
4. Unrealized valuation increase (decrease).....		
5. Total gain (loss) on disposals.....		
6. Deduct consideration received on disposals.....	218,769	
7. Deduct amortization of premium.....		
8. Total foreign exchange change in book / adjusted carrying value.....		
9. Deduct current year's other-than-temporary impairment recognized.....		
10. Book/adjusted carrying value at end of current period (Lines 1+2+3+4+5-6-7+8-9).....	1,234	
11. Deduct total nonadmitted amounts.....		
12. Statement value at end of current period (Line 10 minus Line 11).....	1,234	

(E-01) Schedule A - Part 2

NONE

(E-01) Schedule A - Part 3

NONE

(E-02) Schedule B - Part 2

NONE

(E-02) Schedule B - Part 3

NONE

(E-03) Schedule BA - Part 2

NONE

(E-03) Schedule BA - Part 3

NONE

(E-04) Schedule D - Part 3

NONE

(E-05) Schedule D - Part 4

NONE

(E-06) Schedule DB - Part A - Section 1

NONE

(E-06) Schedule DB - Part A - Section 1 - Description of Hedged Risk(s)

NONE

(E-06) Schedule DB - Part A - Section 1 - Financial or Economic Impact of The Hedge

NONE

(E-07) Schedule DB - Part B - Section 1

NONE

(E-07) Schedule DB - Part B - Section 1 - Broker Name

NONE

(E-07) Schedule DB - Part B - Section 1 - Description of Hedged Risk(s)

NONE

(E-07) Schedule DB - Part B - Section 1 - Financial or Economic Impact of The Hedge

NONE

(E-08) Schedule DB - Part D - Section 1

NONE

(E-09) Schedule DB - Part D - Section 2 - By Reporting Entity

NONE

(E-09) Schedule DB - Part D - Section 2 - To Reporting Entity

NONE

(E-10) Schedule DB - Part E

NONE

(E-11) Schedule DL - Part 1

NONE

(E-12) Schedule DL - Part 2

NONE

SCHEDULE E - PART 1 - CASH

Month End Depository Balances

1 Depository	2 Code	3 Rate of Interest	4 Amount of Interest Received During Current Quarter	5 Amount of Interest Accrued at Current Statement Date	Book Balance at End of Each Month During Current Quarter			9 *
					6 First Month	7 Second Month	8 Third Month	
Regions - Dallas, TX					1,503,000	1,503,000	1,503,000	XXX
0199998 - Deposits in depositories that do not exceed the allowable limit in any one depository (see Instructions) - Open Depositories								XXX
0199999 - Total Open Depositories					1,503,000	1,503,000	1,503,000	XXX
0299998 - Deposits in depositories that do not exceed the allowable limit in any one depository (see Instructions) - Suspended Depositories								XXX
0299999 - Total Suspended Depositories								XXX
0399999 - Total Cash on Deposit					1,503,000	1,503,000	1,503,000	XXX
0499999 - Cash in Company's Office			XXX	XXX				XXX
0599999 - Total					1,503,000	1,503,000	1,503,000	XXX

SCHEDULE E - PART 2 - CASH EQUIVALENTS

Show Investments Owned End of Current Quarter

1 CUSIP	2 Description	3 Code	4 Date Acquired	5 Rate of Interest	6 Maturity Date	7 Book / Adjusted Carrying Value	8 Amount of Interest Due and Accrued	9 Amount Received During Year
Exempt Money Market Mutual Funds – as Identified by SVO								
38141W-29-9	Goldman Sachs Financial Square Funds - Treasury Obligations Fund		06/30/2022	0.020	XXX	1,234		
8209999999 – Exempt Money Market Mutual Funds – as Identified by SVO						1,234		
8609999999 – Total Cash Equivalents						1,234		