



HEALTH QUARTERLY STATEMENT

AS OF JUNE 30, 2024

OF THE CONDITION AND AFFAIRS OF THE

University of Michigan Health Plan

NAIC Group Code 3408 3408 NAIC Company Code 95849 Employer's ID Number 38-2356288
(Current) (Prior)

Organized under the Laws of Michigan, State of Domicile or Port of Entry MI

Country of Domicile United States of America

Licensed as business type: Health Maintenance Organization

Is HMO Federally Qualified? Yes [] No [X]

Incorporated/Organized 12/18/1980 Commenced Business 10/01/1981

Statutory Home Office 1301 N. Hagadorn, Ste 1E, East Lansing, MI, US 48823
(Street and Number) (City or Town, State, Country and Zip Code)

Main Administrative Office 1301 N. Hagadorn, Ste 1E
(Street and Number)
East Lansing, MI, US 48823, 517-364-8400
(City or Town, State, Country and Zip Code) (Area Code) (Telephone Number)

Mail Address 1301 N. Hagadorn, Ste 1E, East Lansing, MI, US 48823
(Street and Number or P.O. Box) (City or Town, State, Country and Zip Code)

Primary Location of Books and Records 1301 N. Hagadorn, Ste 1E
(Street and Number)
East Lansing, MI, US 48823, 517-364-8400
(City or Town, State, Country and Zip Code) (Area Code) (Telephone Number)

Internet Website Address www.phpmichigan.com

Statutory Statement Contact Nickie Werner, 517-364-8315
(Name) (Area Code) (Telephone Number)
Nicole.Werner@phpmm.org, 517-364-8407
(E-mail Address) (FAX Number)

OFFICERS

President Dennis Jon Reese Treasurer/Secretary Eric John Strucko
Chief Financial Officer Nicole Louise Werner Chief Medical Officer Timothy Alan Peterson MD

OTHER

DIRECTORS OR TRUSTEES

<u>Keith Dickey - Chair</u>	<u>Kevin Stanley Albosta - Vice Chair</u>	<u>Dennis Jon Reese</u>
<u>Audrey Liangyue-Wanling Fan MD</u>	<u>Eric John Strucko</u>	<u>Richard Allen Bruner</u>
<u>Douglas Allen Edema</u>	<u>Kimberly Ann Ross</u>	<u>John David Pirich</u>
<u>Margaret Ann Dimond Ph.D</u>		

State of Michigan SS:
County of Ingham

The officers of this reporting entity being duly sworn, each depose and say that they are the described officers of said reporting entity, and that on the reporting period stated above, all of the herein described assets were the absolute property of the said reporting entity, free and clear from any liens or claims thereon, except as herein stated, and that this statement, together with related exhibits, schedules and explanations therein contained, annexed or referred to, is a full and true statement of all the assets and liabilities and of the condition and affairs of the said reporting entity as of the reporting period stated above, and of its income and deductions therefrom for the period ended, and have been completed in accordance with the NAIC Annual Statement Instructions and Accounting Practices and Procedures manual except to the extent that: (1) state law may differ; or, (2) that state rules or regulations require differences in reporting not related to accounting practices and procedures, according to the best of their information, knowledge and belief, respectively. Furthermore, the scope of this attestation by the described officers also includes the related corresponding electronic filing with the NAIC, when required, that is an exact copy (except for formatting differences due to electronic filing) of the enclosed statement. The electronic filing may be requested by various regulators in lieu of or in addition to the enclosed statement.

Dennis J. Reese
President

Nicole L. Werner
Chief Financial Officer

Eric J. Strucko
Treasurer/Secretary

Subscribed and sworn to before me this _____ day of _____

- a. Is this an original filing? Yes [X] No []
b. If no,
1. State the amendment number.....
2. Date filed
3. Number of pages attached.....

STATEMENT AS OF JUNE 30, 2024 OF THE University of Michigan Health Plan

ASSETS

	Current Statement Date			4 December 31 Prior Year Net Admitted Assets
	1 Assets	2 Nonadmitted Assets	3 Net Admitted Assets (Cols. 1 - 2)	
1. Bonds	0	0	0	0
2. Stocks:				
2.1 Preferred stocks	0	0	0	0
2.2 Common stocks	10,689,432	0	10,689,432	10,707,576
3. Mortgage loans on real estate:				
3.1 First liens	0	0	0	0
3.2 Other than first liens.....	0	0	0	0
4. Real estate:				
4.1 Properties occupied by the company (less \$0 encumbrances)	0	0	0	0
4.2 Properties held for the production of income (less \$0 encumbrances)	0	0	0	0
4.3 Properties held for sale (less \$0 encumbrances)	0	0	0	0
5. Cash (\$ (3,360,689)), cash equivalents (\$ 19,952,154) and short-term investments (\$0)	16,591,461	0	16,591,461	22,781,865
6. Contract loans (including \$0 premium notes)	0	0	0	0
7. Derivatives	0	0	0	0
8. Other invested assets	12,208,507	0	12,208,507	14,033,114
9. Receivables for securities	0	0	0	0
10. Securities lending reinvested collateral assets	0	0	0	0
11. Aggregate write-ins for invested assets	0	0	0	0
12. Subtotals, cash and invested assets (Lines 1 to 11)	39,489,400	0	39,489,400	47,522,555
13. Title plants less \$0 charged off (for Title insurers only)	0	0	0	0
14. Investment income due and accrued	111,676	0	111,676	88,841
15. Premiums and considerations:				
15.1 Uncollected premiums and agents' balances in the course of collection	1,692,957	304,451	1,388,506	1,878,324
15.2 Deferred premiums, agents' balances and installments booked but deferred and not yet due (including \$0 earned but unbilled premiums)	0	0	0	0
15.3 Accrued retrospective premiums (\$0) and contracts subject to redetermination (\$0)	0	0	0	0
16. Reinsurance:				
16.1 Amounts recoverable from reinsurers	0	0	0	0
16.2 Funds held by or deposited with reinsured companies	0	0	0	0
16.3 Other amounts receivable under reinsurance contracts	0	0	0	0
17. Amounts receivable relating to uninsured plans	0	0	0	0
18.1 Current federal and foreign income tax recoverable and interest thereon	0	0	0	0
18.2 Net deferred tax asset	0	0	0	0
19. Guaranty funds receivable or on deposit	0	0	0	0
20. Electronic data processing equipment and software	4,691,892	4,691,892	0	0
21. Furniture and equipment, including health care delivery assets (\$0)	9,775	9,775	0	0
22. Net adjustment in assets and liabilities due to foreign exchange rates	0	0	0	0
23. Receivables from parent, subsidiaries and affiliates	9,965,640	0	9,965,640	14,322,437
24. Health care (\$5,668,975) and other amounts receivable	5,695,204	2,819,264	2,875,940	4,304,857
25. Aggregate write-ins for other than invested assets	1,299,058	1,299,058	0	0
26. Total assets excluding Separate Accounts, Segregated Accounts and Protected Cell Accounts (Lines 12 to 25)	62,955,602	9,124,440	53,831,162	68,117,014
27. From Separate Accounts, Segregated Accounts and Protected Cell Accounts	0	0	0	0
28. Total (Lines 26 and 27)	62,955,602	9,124,440	53,831,162	68,117,014
DETAILS OF WRITE-INS				
1101.				
1102.				
1103.				
1198. Summary of remaining write-ins for Line 11 from overflow page	0	0	0	0
1199. Totals (Lines 1101 through 1103 plus 1198)(Line 11 above)	0	0	0	0
2501. Prepaid Assets	1,299,058	1,299,058	0	0
2502.				
2503.				
2598. Summary of remaining write-ins for Line 25 from overflow page	0	0	0	0
2599. Totals (Lines 2501 through 2503 plus 2598)(Line 25 above)	1,299,058	1,299,058	0	0

LIABILITIES, CAPITAL AND SURPLUS

	Current Period			Prior Year
	1 Covered	2 Uncovered	3 Total	4 Total
1. Claims unpaid (less \$0 reinsurance ceded)	12,607,861	826,745	13,434,606	18,730,009
2. Accrued medical incentive pool and bonus amounts	1,870,300	0	1,870,300	1,311,000
3. Unpaid claims adjustment expenses	243,494	0	243,494	341,391
4. Aggregate health policy reserves, including the liability of \$0 for medical loss ratio rebate per the Public Health Service Act	9,750,000	0	9,750,000	8,004,145
5. Aggregate life policy reserves	0	0	0	0
6. Property/casualty unearned premium reserve	0	0	0	0
7. Aggregate health claim reserves	0	0	0	0
8. Premiums received in advance	2,795,444	0	2,795,444	2,301,427
9. General expenses due or accrued	2,484,316	0	2,484,316	2,806,268
10.1 Current federal and foreign income tax payable and interest thereon (including \$0 on realized gains (losses))	0	0	0	0
10.2 Net deferred tax liability	0	0	0	0
11. Ceded reinsurance premiums payable	0	0	0	0
12. Amounts withheld or retained for the account of others.....	632,174	0	632,174	443,019
13. Remittances and items not allocated	0	0	0	0
14. Borrowed money (including \$0 current) and interest thereon \$0 (including \$0 current)	0	0	0	0
15. Amounts due to parent, subsidiaries and affiliates	1,418,487	0	1,418,487	4,256,678
16. Derivatives	0	0	0	0
17. Payable for securities	0	0	0	0
18. Payable for securities lending	0	0	0	0
19. Funds held under reinsurance treaties (with \$0 authorized reinsurers, \$0 unauthorized reinsurers and \$0 certified reinsurers).....	0	0	0	0
20. Reinsurance in unauthorized and certified (\$0) companies	0	0	0	0
21. Net adjustments in assets and liabilities due to foreign exchange rates	0	0	0	0
22. Liability for amounts held under uninsured plans	0	0	0	0
23. Aggregate write-ins for other liabilities (including \$0 current)	0	0	0	0
24. Total liabilities (Lines 1 to 23)	31,802,076	826,745	32,628,821	38,193,937
25. Aggregate write-ins for special surplus funds	XXX	XXX	0	0
26. Common capital stock	XXX	XXX	0	0
27. Preferred capital stock	XXX	XXX	0	0
28. Gross paid in and contributed surplus	XXX	XXX	55,112,000	55,112,000
29. Surplus notes	XXX	XXX	0	0
30. Aggregate write-ins for other than special surplus funds	XXX	XXX	0	0
31. Unassigned funds (surplus)	XXX	XXX	(33,909,658)	(25,188,923)
32. Less treasury stock, at cost:				
32.10 shares common (value included in Line 26 \$0)	XXX	XXX	0	0
32.20 shares preferred (value included in Line 27 \$0)	XXX	XXX	0	0
33. Total capital and surplus (Lines 25 to 31 minus Line 32)	XXX	XXX	21,202,342	29,923,077
34. Total liabilities, capital and surplus (Lines 24 and 33)	XXX	XXX	53,831,163	68,117,014
DETAILS OF WRITE-INS				
2301.				
2302.				
2303.				
2398. Summary of remaining write-ins for Line 23 from overflow page	0	0	0	0
2399. Totals (Lines 2301 through 2303 plus 2398)(Line 23 above)	0	0	0	0
2501.	XXX	XXX		
2502.	XXX	XXX		
2503.	XXX	XXX		
2598. Summary of remaining write-ins for Line 25 from overflow page	XXX	XXX	0	0
2599. Totals (Lines 2501 through 2503 plus 2598)(Line 25 above)	XXX	XXX	0	0
3001.	XXX	XXX		
3002.	XXX	XXX		
3003.	XXX	XXX		
3098. Summary of remaining write-ins for Line 30 from overflow page	XXX	XXX	0	0
3099. Totals (Lines 3001 through 3003 plus 3098)(Line 30 above)	XXX	XXX	0	0

STATEMENT OF REVENUE AND EXPENSES

	Current Year To Date		Prior Year To Date	Prior Year Ended December 31
	1 Uncovered	2 Total	3 Total	4 Total
1. Member Months	XXX	143,750	163,980	328,385
2. Net premium income (including \$0 non-health premium income).....	XXX	67,713,373	82,048,457	157,399,978
3. Change in unearned premium reserves and reserve for rate credits.....	XXX	0	0	0
4. Fee-for-service (net of \$0 medical expenses)	XXX	0	0	0
5. Risk revenue	XXX	0	0	0
6. Aggregate write-ins for other health care related revenues	XXX	0	0	0
7. Aggregate write-ins for other non-health revenues	XXX	0	0	0
8. Total revenues (Lines 2 to 7)	XXX	67,713,373	82,048,457	157,399,978
Hospital and Medical:				
9. Hospital/medical benefits	0	31,386,414	40,252,504	76,766,880
10. Other professional services	0	4,765,584	6,655,080	13,125,993
11. Outside referrals	0	0	0	0
12. Emergency room and out-of-area	0	9,980,997	7,903,923	16,114,665
13. Prescription drugs	0	12,964,825	14,974,158	29,683,894
14. Aggregate write-ins for other hospital and medical	0	0	0	0
15. Incentive pool, withhold adjustments and bonus amounts	0	559,300	906,251	1,484,760
16. Subtotal (Lines 9 to 15)	0	59,657,120	70,691,916	137,176,192
Less:				
17. Net reinsurance recoveries	0	0	0	0
18. Total hospital and medical (Lines 16 minus 17)	0	59,657,120	70,691,916	137,176,192
19. Non-health claims (net)	0	0	0	0
20. Claims adjustment expenses, including \$2,524,381 cost containment expenses	0	3,679,856	3,523,896	7,526,175
21. General administrative expenses	0	11,463,584	10,977,734	23,445,742
22. Increase in reserves for life and accident and health contracts (including \$0 increase in reserves for life only)	0	0	0	0
23. Total underwriting deductions (Lines 18 through 22).....	0	74,800,560	85,193,546	168,148,109
24. Net underwriting gain or (loss) (Lines 8 minus 23)	XXX	(7,087,187)	(3,145,089)	(10,748,131)
25. Net investment income earned	0	693,744	491,548	975,224
26. Net realized capital gains (losses) less capital gains tax of \$0	0	2,194	(278,997)	601,112
27. Net investment gains (losses) (Lines 25 plus 26)	0	695,938	212,551	1,576,336
28. Net gain or (loss) from agents' or premium balances charged off [(amount recovered \$0) (amount charged off \$0)].....	0	0	0	0
29. Aggregate write-ins for other income or expenses	0	0	685	104,834
30. Net income or (loss) after capital gains tax and before all other federal income taxes (Lines 24 plus 27 plus 28 plus 29)	XXX	(6,391,249)	(2,931,853)	(9,066,961)
31. Federal and foreign income taxes incurred	XXX	0	0	0
32. Net income (loss) (Lines 30 minus 31)	XXX	(6,391,249)	(2,931,853)	(9,066,961)
DETAILS OF WRITE-INS				
0601.	XXX			
0602.	XXX			
0603.	XXX			
0698. Summary of remaining write-ins for Line 6 from overflow page	XXX	0	0	0
0699. Totals (Lines 0601 through 0603 plus 0698)(Line 6 above)	XXX	0	0	0
0701.	XXX			
0702.	XXX			
0703.	XXX			
0798. Summary of remaining write-ins for Line 7 from overflow page	XXX	0	0	0
0799. Totals (Lines 0701 through 0703 plus 0798)(Line 7 above)	XXX	0	0	0
1401.				
1402.				
1403.				
1498. Summary of remaining write-ins for Line 14 from overflow page	0	0	0	0
1499. Totals (Lines 1401 through 1403 plus 1498)(Line 14 above)	0	0	0	0
2901. Other	0	0	685	104,834
2902.				
2903.				
2998. Summary of remaining write-ins for Line 29 from overflow page	0	0	0	0
2999. Totals (Lines 2901 through 2903 plus 2998)(Line 29 above)	0	0	685	104,834

STATEMENT OF REVENUE AND EXPENSES (Continued)

	1 Current Year to Date	2 Prior Year to Date	3 Prior Year Ended December 31
CAPITAL AND SURPLUS ACCOUNT			
33. Capital and surplus prior reporting year.....	29,923,086	28,752,871	28,752,871
34. Net income or (loss) from Line 32	(6,391,249)	(2,931,853)	(9,066,961)
35. Change in valuation basis of aggregate policy and claim reserves	0	0	0
36. Change in net unrealized capital gains (losses) less capital gains tax of \$0	(1,854,274)	(3,686,777)	(22,897,464)
37. Change in net unrealized foreign exchange capital gain or (loss)	0	0	0
38. Change in net deferred income tax	0	0	0
39. Change in nonadmitted assets	(475,212)	(1,187,448)	(365,360)
40. Change in unauthorized and certified reinsurance	0	0	0
41. Change in treasury stock	0	0	0
42. Change in surplus notes	0	0	0
43. Cumulative effect of changes in accounting principles.....	0	0	0
44. Capital Changes:			
44.1 Paid in	0	0	0
44.2 Transferred from surplus (Stock Dividend).....	0	0	0
44.3 Transferred to surplus.....	0	0	0
45. Surplus adjustments:			
45.1 Paid in	0	0	33,500,000
45.2 Transferred to capital (Stock Dividend)	0	0	0
45.3 Transferred from capital	0	0	0
46. Dividends to stockholders	0	0	0
47. Aggregate write-ins for gains or (losses) in surplus	0	0	0
48. Net change in capital & surplus (Lines 34 to 47)	(8,720,735)	(7,806,078)	1,170,215
49. Capital and surplus end of reporting period (Line 33 plus 48)	21,202,351	20,946,793	29,923,086
DETAILS OF WRITE-INS			
4701.			
4702.			
4703.			
4798. Summary of remaining write-ins for Line 47 from overflow page	0	0	0
4799. Totals (Lines 4701 through 4703 plus 4798)(Line 47 above)	0	0	0

STATEMENT AS OF JUNE 30, 2024 OF THE University of Michigan Health Plan

CASH FLOW

	1 Current Year To Date	2 Prior Year To Date	3 Prior Year Ended December 31
Cash from Operations			
1. Premiums collected net of reinsurance	70,425,628	82,400,538	159,686,871
2. Net investment income	670,909	556,498	1,079,593
3. Miscellaneous income	1,818	1,144	(7,647)
4. Total (Lines 1 to 3)	71,098,355	82,958,180	160,758,816
5. Benefit and loss related payments	63,465,730	73,033,732	137,685,591
6. Net transfers to Separate Accounts, Segregated Accounts and Protected Cell Accounts	0	0	0
7. Commissions, expenses paid and aggregate write-ins for deductions	15,563,289	15,557,766	30,748,665
8. Dividends paid to policyholders	0	0	0
9. Federal and foreign income taxes paid (recovered) net of \$0 tax on capital gains (losses)	0	0	0
10. Total (Lines 5 through 9)	79,029,019	88,591,498	168,434,256
11. Net cash from operations (Line 4 minus Line 10)	(7,930,664)	(5,633,318)	(7,675,440)
Cash from Investments			
12. Proceeds from investments sold, matured or repaid:			
12.1 Bonds	0	0	0
12.2 Stocks	37,357	3,500,000	3,500,000
12.3 Mortgage loans	0	0	0
12.4 Real estate	0	0	3,181,689
12.5 Other invested assets	0	0	0
12.6 Net gains or (losses) on cash, cash equivalents and short-term investments	(237)	395	(1,384)
12.7 Miscellaneous proceeds	0	0	0
12.8 Total investment proceeds (Lines 12.1 to 12.7)	37,120	3,500,395	6,680,305
13. Cost of investments acquired (long-term only):			
13.1 Bonds	1	0	0
13.2 Stocks	46,680	1,615,527	3,149,613
13.3 Mortgage loans	0	0	0
13.4 Real estate	0	0	0
13.5 Other invested assets	0	500,000	22,800,000
13.6 Miscellaneous applications	0	0	0
13.7 Total investments acquired (Lines 13.1 to 13.6)	46,681	2,115,527	25,949,613
14. Net increase (or decrease) in contract loans and premium notes	0	0	0
15. Net cash from investments (Line 12.8 minus Line 13.7 and Line 14)	(9,561)	1,384,868	(19,269,308)
Cash from Financing and Miscellaneous Sources			
16. Cash provided (applied):			
16.1 Surplus notes, capital notes	0	0	0
16.2 Capital and paid in surplus, less treasury stock	0	0	33,500,000
16.3 Borrowed funds	0	0	0
16.4 Net deposits on deposit-type contracts and other insurance liabilities	0	0	0
16.5 Dividends to stockholders	0	0	0
16.6 Other cash provided (applied)	1,749,821	90,593	(6,388,243)
17. Net cash from financing and miscellaneous sources (Line 16.1 through Line 16.4 minus Line 16.5 plus Line 16.6)	1,749,821	90,593	27,111,757
RECONCILIATION OF CASH, CASH EQUIVALENTS AND SHORT-TERM INVESTMENTS			
18. Net change in cash, cash equivalents and short-term investments (Line 11, plus Lines 15 and 17)	(6,190,404)	(4,157,857)	167,009
19. Cash, cash equivalents and short-term investments:			
19.1 Beginning of year	22,781,865	22,614,856	22,614,856
19.2 End of period (Line 18 plus Line 19.1)	16,591,461	18,456,999	22,781,865

Note: Supplemental disclosures of cash flow information for non-cash transactions:

20.0001.	0	0	0
---------------	---	---	---

STATEMENT AS OF JUNE 30, 2024 OF THE University of Michigan Health Plan

EXHIBIT OF PREMIUMS, ENROLLMENT AND UTILIZATION

	1 Total	Comprehensive (Hospital & Medical)		4 Medicare Supplement	5 Vision Only	6 Dental Only	7 Federal Employees Health Benefits Plan	8 Title XVIII Medicare	9 Title XIX Medicaid	10 Credit A&H	11 Disability Income	12 Long-Term Care	13 Other Health	14 Other Non-Health
		2 Individual	3 Group											
Total Members at end of:														
1. Prior Year	28,055	8,825	19,230	0	0	0	0	0	0	0	0	0	0	0
2. First Quarter	24,182	11,817	12,365	0	0	0	0	0	0	0	0	0	0	0
3. Second Quarter	24,638	12,164	12,474	0	0	0	0	0	0	0	0	0	0	0
4. Third Quarter	0	0	0	0	0	0	0	0	0	0	0	0	0	0
5. Current Year	0	0	0	0	0	0	0	0	0	0	0	0	0	0
6. Current Year Member Months	143,750	69,623	74,127	0	0	0	0	0	0	0	0	0	0	0
Total Member Ambulatory Encounters for Period:														
7. Physician	62,149	29,361	32,788	0	0	0	0	0	0	0	0	0	0	0
8. Non-Physician	50,833	20,512	30,321	0	0	0	0	0	0	0	0	0	0	0
9. Total	112,982	49,873	63,109	0	0	0	0	0	0	0	0	0	0	0
10. Hospital Patient Days Incurred	4,587	2,608	1,979	0	0	0	0	0	0	0	0	0	0	0
11. Number of Inpatient Admissions	984	541	443	0	0	0	0	0	0	0	0	0	0	0
12. Health Premiums Written (a)	67,874,054	34,781,056	33,092,998	0	0	0	0	0	0	0	0	0	0	0
13. Life Premiums Direct	0	0	0	0	0	0	0	0	0	0	0	0	0	0
14. Property/Casualty Premiums Written	0	0	0	0	0	0	0	0	0	0	0	0	0	0
15. Health Premiums Earned.....	67,874,054	34,781,056	33,092,998	0	0	0	0	0	0	0	0	0	0	0
16. Property/Casualty Premiums Earned	0	0	0	0	0	0	0	0	0	0	0	0	0	0
17. Amount Paid for Provision of Health Care Services.....	71,094,626	17,478,053	53,616,573	0	0	0	0	0	0	0	0	0	0	0
18. Amount Incurred for Provision of Health Care Services	59,657,120	14,666,232	44,990,888	0	0	0	0	0	0	0	0	0	0	0

(a) For health premiums written: amount of Medicare Title XVIII exempt from state taxes or fees \$0

STATEMENT AS OF JUNE 30, 2024 OF THE University of Michigan Health Plan

CLAIMS UNPAID AND INCENTIVE POOL, WITHHOLD AND BONUS (Reported and Unreported)

Aging Analysis of Unpaid Claims

Table with 7 columns: 1 Account, 2 1 - 30 Days, 3 31 - 60 Days, 4 61 - 90 Days, 5 91 - 120 Days, 6 Over 120 Days, 7 Total. Rows include 'Claims Unpaid (Reported)', '0299999 Aggregate accounts not individually listed-uncovered', '0399999 Aggregate accounts not individually listed-covered', '0499999 Subtotals', '0599999 Unreported claims and other claim reserves', '0699999 Total amounts withheld', '0799999 Total claims unpaid', and '0899999 Accrued medical incentive pool and bonus amounts'.

UNDERWRITING AND INVESTMENT EXHIBIT

ANALYSIS OF CLAIMS UNPAID - PRIOR YEAR - NET OF REINSURANCE

Line of Business	Claims Paid Year to Date		Liability End of Current Quarter		5 Claims Incurred in Prior Years (Columns 1 + 3)	6 Estimated Claim Reserve and Claim Liability December 31 of Prior Year
	1 On Claims Incurred Prior to January 1 of Current Year	2 On Claims Incurred During the Year	3 On Claims Unpaid Dec. 31 of Prior Year	4 On Claims Incurred During the Year		
1. Comprehensive (hospital and medical) individual	16,183,816	54,910,809	1,716,418	11,718,188	17,900,234	18,730,009
2. Comprehensive (hospital and medical) group	0	0	0	0	0	0
3. Medicare Supplement	0	0	0	0	0	0
4. Vision only	0	0	0	0	0	0
5. Dental only	0	0	0	0	0	0
6. Federal Employees Health Benefits Plan	0	0	0	0	0	0
7. Title XVIII - Medicare	0	0	0	0	0	0
8. Title XIX - Medicaid	0	0	0	0	0	0
9. Credit A&H	0	0	0	0	0	0
10. Disability Income	0	0	0	0	0	0
11. Long-term care	0	0	0	0	0	0
12. Other health	0	0	0	0	0	0
13. Health subtotal (Lines 1 to 12)	16,183,816	54,910,809	1,716,418	11,718,188	17,900,234	18,730,009
14. Health care receivables (a)	5,301,688	2,325,565	1,876,470	3,792,505	7,178,158	6,594,825
15. Other non-health	0	0	0	0	0	0
16. Medical incentive pools and bonus amounts	0	0	1,070,300	800,000	1,070,300	1,311,000
17. Totals (Lines 13 - 14 + 15 + 16)	10,882,128	52,585,244	910,248	8,725,683	11,792,376	13,446,184

(a) Excludes \$ 0 loans or advances to providers not yet expensed.

NOTES TO FINANCIAL STATEMENTS

NOTE 1 Summary of Significant Accounting Policies and Going Concern

A. Accounting Practices

The financial statements of University of Michigan Health Plan (formerly Physicians Health Plan) are presented on the basis of accounting practices prescribed or permitted by the Michigan Department of Insurance and Financial Services (DIFS). Effective December 31, 2015 Sparrow PHP sold 100 percent of membership to an unaffiliated health plan. The commissioner of DIFS approved the 4/30/2017 merger of Sparrow PHP into University of Michigan Health Plan.

DIFS recognizes only statutory accounting practices prescribed or permitted by the state of Michigan for determining and reporting the financial condition and results of operations of an insurance company. The National Association of Insurance Commissioners' (NAIC) *Accounting Practices and Procedures Manual*, (NAIC SAP) has been adopted as a component of prescribed or permitted practices by the state of Michigan.

A reconciliation of University of Michigan Health Plan's net income and capital and surplus between NAIC SAP and practices prescribed and permitted by the state of Michigan is shown below:

	SSAP #	F/S Page	F/S Line #	2024	2023
NET INCOME					
(1) State basis (Page 4, Line 32, Columns 2 & 4)	XXX	XXX	XXX	(6,391,248)	(9,066,963)
(2) State Prescribed Practices that increase/(decrease) NAIC SAP:					
(3) State Permitted Practices that increase/(decrease) NAIC SAP:					
(4) NAIC SAP (1-2-3=4)	XXX	XXX	XXX	(6,391,248)	(9,066,963)
SURPLUS					
(5) State basis (Page 3, Line 33, Columns 3 & 4)	XXX	XXX	XXX	21,202,342	29,923,077
(6) State Prescribed Practices that increase/(decrease) NAIC SAP:					
(7) State Permitted Practices that increase/(decrease) NAIC SAP:					
(8) NAIC SAP (5-6-7=8)	XXX	XXX	XXX	21,202,342	29,923,077

B. Use of Estimates

In preparing the financial statements in conformity with the NAIC Annual Statement Instructions and Accounting Practices and Procedures Manual, management makes estimates and assumptions that affect the reported amounts of assets and liabilities. It also requires disclosure of contingent assets and liabilities at the date of the financial statements and the reported amounts of revenue and expenses during the period. Actual results could differ from those estimates.

C. Accounting Policy

1. Short term investments are stated at amortized cost or at market value depending upon the respective investment.
2. Bonds
Not applicable
3. Common stocks are stated at market value.
4. Preferred stocks
Not applicable
5. Mortgage loans
Not applicable
6. Loan-backed securities
Not applicable
7. Investments in subsidiaries, controlled and affiliated companies

University of Michigan Health Plan records its investment in University of Michigan Health Service Company, a wholly owned subsidiary licensed as a Third Party Administrator by the state of Michigan, using the audited statutory equity method and reports the increase or decrease in the investment as a change in unrealized gain or loss for capital & surplus.

University of Michigan Health Plan records its investment in University of Michigan Health Insurance Company, a wholly owned subsidiary licensed by the state of Michigan, using the audited statutory equity method and reports the increase or decrease in the investment as a change in unrealized gain or loss for capital & surplus.

University of Michigan Health Plan records its investment in University of Michigan Health Medicare, a wholly owned subsidiary licensed as a Health Maintenance Organization (HMO) by the state of Michigan, using the audited statutory equity method and reports the increase or decrease in the investment as a change in unrealized gain or loss for capital & surplus.

8. Investments in joint ventures, partnerships and limited liability companies
Not applicable
9. Derivatives
Not applicable
10. Premium deficiency reserves
Not applicable
11. Estimating the liabilities for losses and loss/claim adjustment expenses: Estimates on unpaid losses are based upon the plan's past experience, individual case estimates and an estimate for losses incurred but not reported. Such liabilities are necessarily based on assumptions and estimates and while management believes the amount is adequate, the ultimate liability may be in excess of or less than the amount provided. The methods for making such estimates and for establishing the resulting liabilities are continually reviewed and any adjustments are reflected in the period determined. Loss/claim adjustment expenses related to claims are accrued based on estimates of expenses to process those claims.
12. University of Michigan Health Plan has not modified its capitalization from the prior period.
13. Estimating pharmaceutical rebate receivables: Estimates on pharmaceutical rebate receivables are based on historical per member data for periods in which the rebates have been substantially received. This estimate is applied to periods in which future balances are expected, reduced by receipts to-date.

D. Going Concern

The principal conditions of our current environment that would raise doubt as to the ability of the plan to continue as a going concern would include the variability and uncertainty of the current health care marketplace. While potentially significant, Management has developed plans to alleviate the potential for going concern by reviewing budgeted trends for the Health System as well as University of Michigan Health Plan for 2024, diversification of the products we offer on and off the marketplace, and proper underwriting for new and renewing membership.

NOTE 2 Accounting Changes and Corrections of Errors

Not Applicable

NOTE 3 Business Combinations and Goodwill

Not Applicable

NOTE 4 Discontinued Operations

Not Applicable

NOTE 5 Investments

A-K. Not Applicable

L. Restricted Assets

1. Restricted Assets (Including Pledged)

Restricted Asset Category	1 Total Gross (Admitted & Nonadmitted) Restricted from Current Year	2 Total Gross (Admitted & Nonadmitted) Restricted from Prior Year	3 Increase/ (Decrease) (1 minus 2)	4 Total Current Year Nonadmitted Restricted	5 Total Current Year Admitted Restricted (1 minus 4)	6 Gross (Admitted & Nonadmitted) Restricted to Total Assets (a)	7 Admitted Restricted to Total Admitted Assets (b)
a. Subject to contractual obligation for which liability is not shown			0		0	0.000	0.000
b. Collateral held under security lending agreements			0		0	0.000	0.000
c. Subject to repurchase agreements			0		0	0.000	0.000
d. Subject to reverse repurchase agreements			0		0	0.000	0.000
e. Subject to dollar repurchase agreements			0		0	0.000	0.000
f. Subject to dollar reverse repurchase agreements			0		0	0.000	0.000
g. Placed under option contracts			0		0	0.000	0.000
h. Letter stock or securities restricted as to sale - excluding FHLB capital stock			0		0	0.000	0.000
i. FHLB capital stock			0		0	0.000	0.000
j. On deposit with states	1,304,971	1,272,669	32,302	0	1,304,971	2.149	2.529
k. On deposit with other regulatory bodies			0		0	0.000	0.000
l. Pledged collateral to FHLB (including assets backing funding agreements)			0		0	0.000	0.000
m. Pledged as collateral not captured in other categories			0		0	0.000	0.000
n. Other restricted assets			0		0	0.000	0.000
o. Total Restricted Assets	1,304,971	1,272,669	32,302	0	1,304,971	2.149	2.529

(a) Column 1 divided by Asset Page, Column 1, Line 28

(b) Column 5 divided by Asset Page, Column 3, Line 28

2. Detail of Assets Pledged as Collateral Not Captured in Other Categories (Contracts That Share Similar Characteristics, Such as Reinsurance and Derivatives, Are Reported in the Aggregate)

Not Applicable

3. Detail of Other Restricted Assets (Contracts That Share Similar Characteristics, Such as Reinsurance and Derivatives, Are Reported in the Aggregate)

Not Applicable

4. Collateral Received and Reflected as Assets Within the Reporting Entity's Financial Statements

Not Applicable

M-R. Not Applicable

NOTE 6 Joint Ventures, Partnerships and Limited Liability Companies

Not Applicable

NOTE 7 Investments Income

A. Accrued Investment Income

The Company does not admit investment income due and accrued if amounts are over 90 days past due.

B. Amounts Nonadmitted

Not applicable.

NOTE 8 Derivatives Instruments

Not Applicable

NOTE 9 Income Taxes

University of Michigan Health Plan is exempt from income taxes under Section 501 (c) (4) of the Internal Revenue Code.

NOTE 10 Information Concerning Parent, Subsidiaries, Affiliates and Other Related Parties

No Significant Change

NOTE 11 Debt

Not Applicable

NOTE 12 Retirement Plans, Deferred Compensation, Postemployment Benefits and Compensated Absences and Other Postretirement Benefit Plans

No Significant Change

NOTE 13 Capital and Surplus, Dividend Restrictions and Quasi-Reorganizations

No Significant Change

NOTE 14 Liabilities, Contingencies and Assessments

Not Applicable

NOTE 15 Leases

No Significant Change

NOTE 16 Information about Financial Instruments with Off-Balance Sheet Risk and Financial Instruments with Concentrations of Credit Risk

Not Applicable

NOTE 17 Sale, Transfer and Servicing of Financial Assets and Extinguishments of Liabilities

Not Applicable

NOTE 18 Gain or Loss to the Reporting Entity from Uninsured Plans and the Uninsured Portion of Partially Insured Plans

Not Applicable

NOTE 19 Direct Premium Written / Produced by Managing General Agents / Third Party Administrators

Not Applicable

NOTE 20 Fair Value Measurement**A. Inputs Used for Assets and Liabilities Measured and Reported at Fair Value****(1) Items Measured at Fair Value by Levels 1, 2 and 3**

The Company has categorized its assets and liabilities that are reported on the balance sheet at fair value into the three-level fair value hierarchy as reflected in the table below. The three-level fair value hierarchy is based on the degree of subjectivity inherent in the valuation method by which fair value was determined. The three levels are defined as follows:

Level 1 - Quoted Prices in Active Markets for Identical Assets and Liabilities: This category, for items measured at fair value on a recurring basis, includes exchange-traded common stocks and mutual funds. The estimated fair value of the equity securities within this category are based on quoted prices in active markets and are therefore classified as Level 1.

Level 2 - Significant Other Observable Inputs: This category, for items measured at fair value on a recurring basis, includes bonds which are not exchange traded and common stock of a subsidiary which is valued using an adjusted market method. The estimated fair values of some of these bonds were determined by independent pricing services using observable inputs. Others were based on quotes from markets which were not considered actively traded. The Company has no Level 2 assets or liabilities.

Level 3 - Significant Unobservable Inputs: The Company has no Level 3 assets or liabilities.

Description for each class of asset or liability	(Level 1)	(Level 2)	(Level 3)	Total	Net Asset Value (NAV) Included in Level 2
a. Assets at fair value					
Mutual Funds	996,195	0	0	996,195	0
Cash Equivalents	19,952,150	0	0	19,952,150	0
Total assets at fair value	20,948,345	0	0	20,948,345	0

At the end of each reporting period, the Company evaluates whether or not any event has occurred or circumstances have changed that would cause an instrument to be transferred between Levels 1 and 2. This policy also applies to transfers into or out of Level 3 as stated in paragraph 3 below.

No transfers between Levels 1 and 2 occurred during the current year.

(2) Rollforward of Level 3 Items

The Company has no assets or liabilities measured at fair value in the Level 3 category.

(3) Policy on Transfers In to and Out of Level 3

At the end of each reporting period, the Company evaluates whether or not any event has occurred or circumstances have changed that would cause an instrument to be transferred into or out of Level 3. During the current year, no transfers into or out of Level 3 were required.

(4) Inputs and Techniques Used for Level 2 and Level 3 Fair Values

The Company has no assets or liabilities measured at fair value in the Level 2 or 3 categories.

(5) Derivative Fair Values

Not applicable.

B. Other Fair Value Disclosures

Not applicable.

C. Aggregate fair value for all financial instruments and the level within the fair value hierarchy in which the fair value measurements in their entirety fall.

Type of Financial Instrument	Aggregate Fair Value	Admitted Assets	(Level 1)	(Level 2)	(Level 3)	Not Practicable (Carrying Value)	Net Asset Value (NAV) Included in Level 2
Mutual Funds	996,195	996,195	996,195	0	0	0	0
Cash Equivalents	19,952,150	19,952,150	19,952,150	0	0	0	0

D. Not Practicable to Estimate Fair Value

Not applicable

NOTE 21 Other Items

No Significant Change

NOTE 22 Events Subsequent

Not Applicable

NOTE 23 Reinsurance

No Significant Change

NOTE 24 Retrospectively Rated Contracts & Contracts Subject to Redetermination

A-C. The Company does not participate in traditional retrospectively rated contracts.

D. Medical loss ratio rebates required pursuant to the Public Health Service Act.
Not applicable

E. Risk Sharing Provisions of the Affordable Care Act

(1) Did the reporting entity write accident and health insurance premium which is subject to the Affordable Care Act risk sharing provisions (YES/NO)? Yes [X] No []

(2) Impact of Risk Sharing Provisions of the Affordable Care Act on Admitted Assets, Liabilities and Revenue for the Current Year

AMOUNT

a. Permanent ACA Risk Adjustment Program

Assets

1. Premium adjustments receivable due to ACA Risk Adjustment (including high risk pool payments) 0

Liabilities

2. Risk adjustment user fees payable for ACA Risk Adjustment 17,969

3. Premium adjustments payable due to ACA Risk Adjustment (including high risk pool payments) 3,750,000

Operations (Revenue & Expense)

4. Reported as revenue in premium for accident and health contracts (written/collected) due to ACA Risk Adjustment 3,750,000

5. Reported in expenses as ACA risk adjustment user fees (incurred/paid) 17,969

b. Transitional ACA Reinsurance Program

Assets

1. Amounts recoverable for claims paid due to ACA Reinsurance 0

2. Amounts recoverable for claims unpaid due to ACA Reinsurance (Contra Liability) 0

3. Amounts receivable relating to uninsured plans for contributions for ACA Reinsurance 0

Liabilities

4. Liabilities for contributions payable due to ACA Reinsurance – not reported as ceded premium 0

5. Ceded reinsurance premiums payable due to ACA Reinsurance 0

6. Liabilities for amounts held under uninsured plans contributions for ACA Reinsurance 0

Operations (Revenue & Expense)

7. Ceded reinsurance premiums due to ACA Reinsurance 0

8. Reinsurance recoveries (income statement) due to ACA Reinsurance payments or expected payments 0

9. ACA Reinsurance contributions – not reported as ceded premium 0

c. Temporary ACA Risk Corridors Program

Assets

1. Accrued retrospective premium due to ACA Risk Corridors 0

Liabilities

2. Reserve for rate credits or policy experience rating refunds due to ACA Risk Corridors 0

Operations (Revenue & Expense)

3. Effect of ACA Risk Corridors on net premium income (paid/received) 0

4. Effect of ACA Risk Corridors on change in reserves for rate credits 0

(3) Roll forward of prior year ACA risk sharing provisions for the following asset (gross of any nonadmission) and liability balances along with the reasons for adjustments to prior year balance.

	Accrued During the Prior Year on Business Written Before Dec. 31 of the Prior Year		Received or Paid as of the Current Year on Business Written Before Dec. 31 of the Prior Year		Differences		Adjustments			Unsettled Balances as of the Reporting Date	
	1	2	3	4	Prior Year Accrued Less Payments (Col 1 - 3)	Prior Year Accrued Less Payments (Col 2 - 4)	To Prior Year Balances	To Prior Year Balances	Ref	Cumulative Balance from Prior Years (Col 1 - 3 + 7)	Cumulative Balance from Prior Years (Col 2 - 4 + 8)
					5	6	7	8		9	10
	Receivable	(Payable)	Receivable	(Payable)	Receivable	(Payable)	Receivable	(Payable)		Receivable	(Payable)
a. Permanent ACA Risk Adjustment Program											
1. Premium adjustments receivable (including high risk pool payments)	0	0	0	0	0	0	0	0	A	0	0
2. Premium adjustments payable (including high risk pool payments)	0	(8,045,194)	0	0	0	(8,045,194)	0	0	B	0	(8,045,194)
3. Subtotal ACA Permanent Risk Adjustment Program	0	(8,045,194)	0	0	0	(8,045,194)	0	0		0	(8,045,194)
b. Transitional ACA Reinsurance Program											
1. Amounts recoverable for claims paid	0	0	0	0	0	0	0	0	C	0	0
2. Amounts recoverable for claims unpaid (contra liability)	0	0	0	0	0	0	0	0	D	0	0
3. Amounts receivable relating to uninsured plans	0	0	0	0	0	0	0	0	E	0	0
4. Liabilities for contributions payable due to ACA Reinsurance - not reported as ceded premium	0	0	0	0	0	0	0	0	F	0	0
5. Ceded reinsurance premiums payable	0	0	0	0	0	0	0	0	G	0	0
6. Liability for amounts held under uninsured plans	0	0	0	0	0	0	0	0	H	0	0
7. Subtotal ACA Transitional Reinsurance Program	0	0	0	0	0	0	0	0		0	0
c. Temporary ACA Risk Corridors Program											
1. Accrued retrospective premium	0	0	0	0	0	0	0	0	I	0	0
2. Reserve for rate credits or policy experience rating refunds	0	0	0	0	0	0	0	0	J	0	0
3. Subtotal ACA Risk Corridors Program	0	0	0	0	0	0	0	0		0	0
d. Total for ACA Risk Sharing Provisions	0	(8,045,194)	0	0	0	(8,045,194)	0	0		0	(8,045,194)

Explanations of Adjustments

B. Adjusted to actual ACA Risk Adjustment Transfer payment

(4) Roll-Forward of Risk Corridors Asset and Liability Balances by Program Benefit Year

Risk Corridors Program Year	Accrued During the Prior Year on Business Written Before Dec. 31 of the Prior Year		Received or Paid as of the Current Year on Business Written Before Dec. 31 of the Prior Year		Differences		Adjustments		Unsettled Balances as of the Reporting Date		
					Prior Year Accrued Less Payments (Col 1 - 3)	Prior Year Accrued Less Payments (Col 2 - 4)	To Prior Year Balances	To Prior Year Balances	Cumulative Balance from Prior Years (Col 1 - 3 + 7)	Cumulative Balance from Prior Years (Col 2 - 4 + 8)	
	1	2	3	4	5	6	7	8	Ref	9	10
	Receivable	(Payable)	Receivable	(Payable)	Receivable	(Payable)	Receivable	(Payable)		Receivable	(Payable)
a. 2014											
1. Accrued retrospective premium	0	0	0	0	0	0	0	0	A	0	0
2. Reserve for rate credits or policy experience rating refunds	0	0	0	0	0	0	0	0	B	0	0
b. 2015											
1. Accrued retrospective premium	0	0	0	0	0	0	0	0	C	0	0
2. Reserve for rate credits or policy experience rating refunds	0	0	0	0	0	0	0	0	D	0	0
c. 2016											
1. Accrued retrospective premium	0	0	0	0	0	0	0	0	E	0	0
2. Reserve for rate credits or policy experience rating refunds	0	0	0	0	0	0	0	0	F	0	0
d. Total for Risk Corridors	0	0	0	0	0	0	0	0		0	0

(5) ACA Risk Corridors Receivable as of Reporting Date

Risk Corridors Program Year	1 Estimated Amount to be Filed or Final Amount Filed with CMS	2 Non-acrued Amounts for Impairment or Other Reasons	3 Amounts received from CMS	4 Asset Balance (Gross of Non-admissions) (1-2-3)	5 Non-admitted Amount	6 Net Admitted Asset (4 - 5)
a. 2014	0	0	0	0	0	0
b. 2015	0	0	0	0	0	0
c. 2016	0	0	0	0	0	0
d. Total (a + b + c)	0	0	0	0	0	0

24E(5)d (Column 4) should equal 24E(3)c1 (Column 9)

24E(5)d (Column 6) should equal 24E(2)c1

NOTE 25 Change in Incurred Claims and Claim Adjustment Expenses

Reserves as of December 31, 2023 were \$18.7 million. As of June 30, 2024, \$14.4 million has been paid for incurred claims and claim adjustment expenses attributable to insured events of prior years. Reserves remaining for prior years are now approximately \$1.7 million due to re-estimation of unpaid claims and claim adjustment expenses. Resulting in favorable prior-year development of approximately \$2.6 million from December 31, 2023 to June 30, 2024. The decrease is generally the result of ongoing analysis of recent loss development trends. Original estimates increase or decrease, as additional information becomes known regarding individual claims.

NOTE 26 Intercompany Pooling Arrangements

Not Applicable

NOTE 27 Structured Settlements

Not Applicable

NOTE 28 Health Care Receivables

No Significant Change

NOTE 29 Participating Policies

Not Applicable

NOTE 30 Premium Deficiency Reserves

Not Applicable

NOTE 31 Anticipated Salvage and Subrogation

Not Applicable

GENERAL INTERROGATORIES

PART 1 - COMMON INTERROGATORIES

GENERAL

- 1.1 Did the reporting entity experience any material transactions requiring the filing of Disclosure of Material Transactions with the State of Domicile, as required by the Model Act? Yes [] No [X]
- 1.2 If yes, has the report been filed with the domiciliary state? Yes [] No [X]
- 2.1 Has any change been made during the year of this statement in the charter, by-laws, articles of incorporation, or deed of settlement of the reporting entity? Yes [X] No []
- 2.2 If yes, date of change: 05/23/2024
- 3.1 Is the reporting entity a member of an Insurance Holding Company System consisting of two or more affiliated persons, one or more of which is an insurer? Yes [X] No []
If yes, complete Schedule Y, Parts 1 and 1A.
- 3.2 Have there been any substantial changes in the organizational chart since the prior quarter end? Yes [] No [X]
- 3.3 If the response to 3.2 is yes, provide a brief description of those changes.
.....
- 3.4 Is the reporting entity publicly traded or a member of a publicly traded group? Yes [] No [X]
- 3.5 If the response to 3.4 is yes, provide the CIK (Central Index Key) code issued by the SEC for the entity/group.
- 4.1 Has the reporting entity been a party to a merger or consolidation during the period covered by this statement? Yes [] No [X]
- 4.2 If yes, provide the name of the entity, NAIC Company Code, and state of domicile (use two letter state abbreviation) for any entity that has ceased to exist as a result of the merger or consolidation.

1 Name of Entity	2 NAIC Company Code	3 State of Domicile

5. If the reporting entity is subject to a management agreement, including third-party administrator(s), managing general agent(s), attorney-in-fact, or similar agreement, have there been any significant changes regarding the terms of the agreement or principals involved? Yes [] No [X] N/A []
If yes, attach an explanation.
.....
- 6.1 State as of what date the latest financial examination of the reporting entity was made or is being made. 12/31/2022
- 6.2 State the as of date that the latest financial examination report became available from either the state of domicile or the reporting entity. This date should be the date of the examined balance sheet and not the date the report was completed or released. 12/31/2022
- 6.3 State as of what date the latest financial examination report became available to other states or the public from either the state of domicile or the reporting entity. This is the release date or completion date of the examination report and not the date of the examination (balance sheet date). 10/05/2023
- 6.4 By what department or departments?
Michigan Department of Insurance and Financial Services
- 6.5 Have all financial statement adjustments within the latest financial examination report been accounted for in a subsequent financial statement filed with Departments? Yes [] No [] N/A [X]
- 6.6 Have all of the recommendations within the latest financial examination report been complied with? Yes [X] No [] N/A []
- 7.1 Has this reporting entity had any Certificates of Authority, licenses or registrations (including corporate registration, if applicable) suspended or revoked by any governmental entity during the reporting period? Yes [] No [X]
- 7.2 If yes, give full information:
.....
- 8.1 Is the company a subsidiary of a bank holding company regulated by the Federal Reserve Board? Yes [] No [X]
- 8.2 If response to 8.1 is yes, please identify the name of the bank holding company.
.....
- 8.3 Is the company affiliated with one or more banks, thrifts or securities firms? Yes [] No [X]
- 8.4 If response to 8.3 is yes, please provide below the names and location (city and state of the main office) of any affiliates regulated by a federal regulatory services agency [i.e. the Federal Reserve Board (FRB), the Office of the Comptroller of the Currency (OCC), the Federal Deposit Insurance Corporation (FDIC) and the Securities Exchange Commission (SEC)] and identify the affiliate's primary federal regulator.

1 Affiliate Name	2 Location (City, State)	3 FRB	4 OCC	5 FDIC	6 SEC

STATEMENT AS OF JUNE 30, 2024 OF THE University of Michigan Health Plan
GENERAL INTERROGATORIES

- 9.1 Are the senior officers (principal executive officer, principal financial officer, principal accounting officer or controller, or persons performing similar functions) of the reporting entity subject to a code of ethics, which includes the following standards? Yes [X] No []
- (a) Honest and ethical conduct, including the ethical handling of actual or apparent conflicts of interest between personal and professional relationships;
- (b) Full, fair, accurate, timely and understandable disclosure in the periodic reports required to be filed by the reporting entity;
- (c) Compliance with applicable governmental laws, rules and regulations;
- (d) The prompt internal reporting of violations to an appropriate person or persons identified in the code; and
- (e) Accountability for adherence to the code.
- 9.11 If the response to 9.1 is No, please explain:

- 9.2 Has the code of ethics for senior managers been amended? Yes [] No [X]
- 9.21 If the response to 9.2 is Yes, provide information related to amendment(s).

- 9.3 Have any provisions of the code of ethics been waived for any of the specified officers? Yes [] No [X]
- 9.31 If the response to 9.3 is Yes, provide the nature of any waiver(s).

FINANCIAL

- 10.1 Does the reporting entity report any amounts due from parent, subsidiaries or affiliates on Page 2 of this statement? Yes [X] No []
- 10.2 If yes, indicate any amounts receivable from parent included in the Page 2 amount: \$ 0

INVESTMENT

- 11.1 Were any of the stocks, bonds, or other assets of the reporting entity loaned, placed under option agreement, or otherwise made available for use by another person? (Exclude securities under securities lending agreements.) Yes [] No [X]
- 11.2 If yes, give full and complete information relating thereto:

12. Amount of real estate and mortgages held in other invested assets in Schedule BA: \$ 0
13. Amount of real estate and mortgages held in short-term investments: \$ 0
- 14.1 Does the reporting entity have any investments in parent, subsidiaries and affiliates? Yes [X] No []
- 14.2 If yes, please complete the following:
- | | 1
Prior Year-End
Book/Adjusted
Carrying Value | 2
Current Quarter
Book/Adjusted
Carrying Value |
|---|--|---|
| 14.21 Bonds | \$ 0 | \$ 0 |
| 14.22 Preferred Stock | \$ 0 | \$ 0 |
| 14.23 Common Stock | \$ 9,765,174 | \$ 9,693,237 |
| 14.24 Short-Term Investments | \$ 0 | \$ 0 |
| 14.25 Mortgage Loans on Real Estate | \$ 0 | \$ 0 |
| 14.26 All Other | \$ 14,033,114 | \$ 12,208,508 |
| 14.27 Total Investment in Parent, Subsidiaries and Affiliates (Subtotal Lines 14.21 to 14.26) | \$ 23,798,288 | \$ 21,901,745 |
| 14.28 Total Investment in Parent included in Lines 14.21 to 14.26 above | \$ 0 | \$ 0 |
- 15.1 Has the reporting entity entered into any hedging transactions reported on Schedule DB? Yes [] No [X]
- 15.2 If yes, has a comprehensive description of the hedging program been made available to the domiciliary state? Yes [] No [] N/A [X]
 If no, attach a description with this statement.

16. For the reporting entity's security lending program, state the amount of the following as of the current statement date:
- 16.1 Total fair value of reinvested collateral assets reported on Schedule DL, Parts 1 and 2. \$ 0
- 16.2 Total book/adjusted carrying value of reinvested collateral assets reported on Schedule DL, Parts 1 and 2 \$ 0
- 16.3 Total payable for securities lending reported on the liability page. \$ 0

STATEMENT AS OF JUNE 30, 2024 OF THE University of Michigan Health Plan
GENERAL INTERROGATORIES

17. Excluding items in Schedule E - Part 3 - Special Deposits, real estate, mortgage loans and investments held physically in the reporting entity's offices, vaults or safety deposit boxes, were all stocks, bonds and other securities, owned throughout the current year held pursuant to a custodial agreement with a qualified bank or trust company in accordance with Section 1, III - General Examination Considerations, F. Outsourcing of Critical Functions, Custodial or Safekeeping Agreements of the NAIC Financial Condition Examiners Handbook? Yes [] No []
- 17.1 For all agreements that comply with the requirements of the NAIC Financial Condition Examiners Handbook, complete the following:

1 Name of Custodian(s)	2 Custodian Address
BNY Mellon	One Mellon Center, Pittsburgh, PA 19458-0001

- 17.2 For all agreements that do not comply with the requirements of the NAIC Financial Condition Examiners Handbook, provide the name, location and a complete explanation:

1 Name(s)	2 Location(s)	3 Complete Explanation(s)

- 17.3 Have there been any changes, including name changes, in the custodian(s) identified in 17.1 during the current quarter? Yes [] No []

- 17.4 If yes, give full information relating thereto:

1 Old Custodian	2 New Custodian	3 Date of Change	4 Reason

- 17.5 Investment management – Identify all investment advisors, investment managers, broker/dealers, including individuals that have the authority to make investment decisions on behalf of the reporting entity. For assets that are managed internally by employees of the reporting entity, note as such. ["...that have access to the investment accounts"; "...handle securities"]

1 Name of Firm or Individual	2 Affiliation
SEI	U.....

- 17.5097 For those firms/individuals listed in the table for Question 17.5, do any firms/individuals unaffiliated with the reporting entity (i.e. designated with a "U") manage more than 10% of the reporting entity's invested assets?..... Yes [] No []

- 17.5098 For firms/individuals unaffiliated with the reporting entity (i.e. designated with a "U") listed in the table for Question 17.5, does the total assets under management aggregate to more than 50% of the reporting entity's invested assets?..... Yes [] No []

- 17.6 For those firms or individuals listed in the table for 17.5 with an affiliation code of "A" (affiliated) or "U" (unaffiliated), provide the information for the table below.

1	2	3	4	5
Central Registration Depository Number	Name of Firm or Individual	Legal Entity Identifier (LEI)	Registered With	Investment Management Agreement (IMA) Filed
105146	SEI Investment Mgt. Corp.	DS.....

- 18.1 Have all the filing requirements of the Purposes and Procedures Manual of the NAIC Investment Analysis Office been followed? Yes [] No []

- 18.2 If no, list exceptions:

19. By self-designating 5GI securities, the reporting entity is certifying the following elements for each self-designated 5GI security:

- a. Documentation necessary to permit a full credit analysis of the security does not exist or an NAIC CRP credit rating for an FE or PL security is not available.
- b. Issuer or obligor is current on all contracted interest and principal payments.
- c. The insurer has an actual expectation of ultimate payment of all contracted interest and principal.

- Has the reporting entity self-designated 5GI securities? Yes [] No []

20. By self-designating PLGI securities, the reporting entity is certifying the following elements of each self-designated PLGI security:

- a. The security was purchased prior to January 1, 2018.
- b. The reporting entity is holding capital commensurate with the NAIC Designation reported for the security.
- c. The NAIC Designation was derived from the credit rating assigned by an NAIC CRP in its legal capacity as a NRSRO which is shown on a current private letter rating held by the insurer and available for examination by state insurance regulators.
- d. The reporting entity is not permitted to share this credit rating of the PL security with the SVO.

- Has the reporting entity self-designated PLGI securities? Yes [] No []

21. By assigning FE to a Schedule BA non-registered private fund, the reporting entity is certifying the following elements of each self-designated FE fund:

- a. The shares were purchased prior to January 1, 2019.
- b. The reporting entity is holding capital commensurate with the NAIC Designation reported for the security.
- c. The security had a public credit rating(s) with annual surveillance assigned by an NAIC CRP in its legal capacity as an NRSRO prior to January 1, 2019.
- d. The fund only or predominantly holds bonds in its portfolio.
- e. The current reported NAIC Designation was derived from the public credit rating(s) with annual surveillance assigned by an NAIC CRP in its legal capacity as an NRSRO.
- f. The public credit rating(s) with annual surveillance assigned by an NAIC CRP has not lapsed.

- Has the reporting entity assigned FE to Schedule BA non-registered private funds that complied with the above criteria? Yes [] No []

GENERAL INTERROGATORIES

PART 2 - HEALTH

- 1. Operating Percentages:
 - 1.1 A&H loss percent91.8 %
 - 1.2 A&H cost containment percent3.7 %
 - 1.3 A&H expense percent excluding cost containment expenses16.9 %

- 2.1 Do you act as a custodian for health savings accounts? Yes [] No [X]
- 2.2 If yes, please provide the amount of custodial funds held as of the reporting date\$.....0
- 2.3 Do you act as an administrator for health savings accounts? Yes [] No [X]
- 2.4 If yes, please provide the balance of the funds administered as of the reporting date\$.....0

- 3. Is the reporting entity licensed or chartered, registered, qualified, eligible or writing business in at least two states? Yes [] No [X]
- 3.1 If no, does the reporting entity assume reinsurance business that covers risks residing in at least one state other than the state of domicile of the reporting entity? Yes [] No [X]

SCHEDULE T - PREMIUMS AND OTHER CONSIDERATIONS

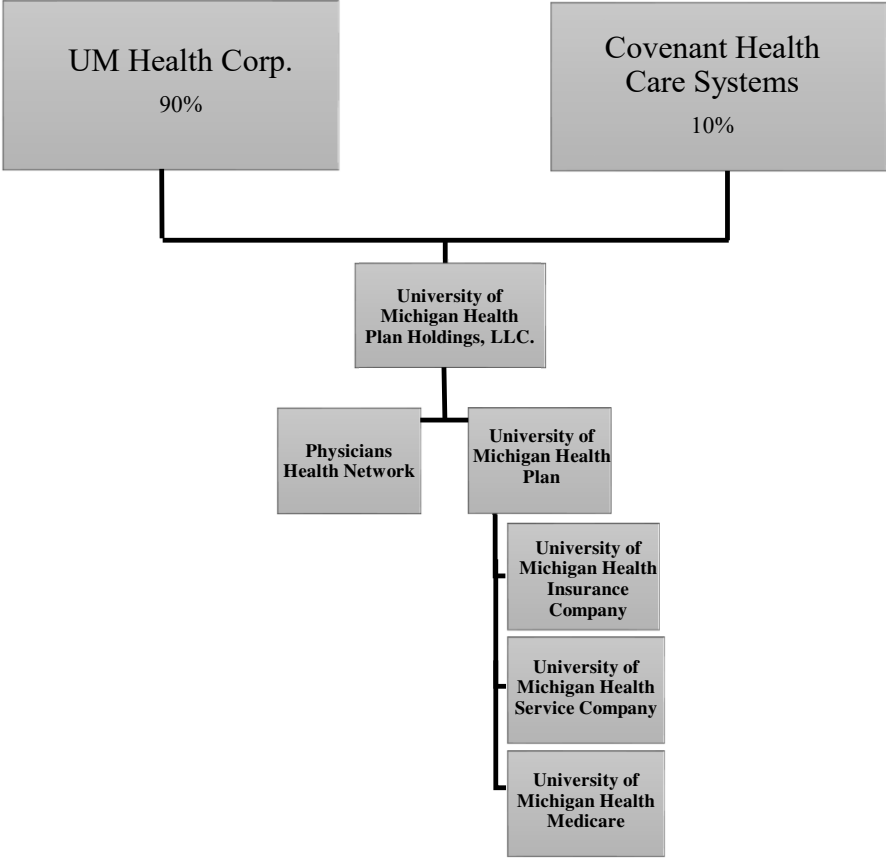
Current Year to Date - Allocated by States and Territories

States, etc.	1 Active Status (a)	Direct Business Only									
		2 Accident and Health Premiums	3 Medicare Title XVIII	4 Medicaid Title XIX	5 CHIP Title XXI	6 Federal Employees Health Benefits Program Premiums	7 Life and Annuity Premiums & Other Considerations	8 Property/Casualty Premiums	9 Total Columns 2 Through 8	10 Deposit-Type Contracts	
1. Alabama	AL	.N	.0	.0	.0	.0	.0	.0	.0	.0	.0
2. Alaska	AK	.N	.0	.0	.0	.0	.0	.0	.0	.0	.0
3. Arizona	AZ	.N	.0	.0	.0	.0	.0	.0	.0	.0	.0
4. Arkansas	AR	.N	.0	.0	.0	.0	.0	.0	.0	.0	.0
5. California	CA	.N	.0	.0	.0	.0	.0	.0	.0	.0	.0
6. Colorado	CO	.N	.0	.0	.0	.0	.0	.0	.0	.0	.0
7. Connecticut	CT	.N	.0	.0	.0	.0	.0	.0	.0	.0	.0
8. Delaware	DE	.N	.0	.0	.0	.0	.0	.0	.0	.0	.0
9. District of Columbia	DC	.N	.0	.0	.0	.0	.0	.0	.0	.0	.0
10. Florida	FL	.N	.0	.0	.0	.0	.0	.0	.0	.0	.0
11. Georgia	GA	.N	.0	.0	.0	.0	.0	.0	.0	.0	.0
12. Hawaii	HI	.N	.0	.0	.0	.0	.0	.0	.0	.0	.0
13. Idaho	ID	.N	.0	.0	.0	.0	.0	.0	.0	.0	.0
14. Illinois	IL	.N	.0	.0	.0	.0	.0	.0	.0	.0	.0
15. Indiana	IN	.N	.0	.0	.0	.0	.0	.0	.0	.0	.0
16. Iowa	IA	.N	.0	.0	.0	.0	.0	.0	.0	.0	.0
17. Kansas	KS	.N	.0	.0	.0	.0	.0	.0	.0	.0	.0
18. Kentucky	KY	.N	.0	.0	.0	.0	.0	.0	.0	.0	.0
19. Louisiana	LA	.N	.0	.0	.0	.0	.0	.0	.0	.0	.0
20. Maine	ME	.N	.0	.0	.0	.0	.0	.0	.0	.0	.0
21. Maryland	MD	.N	.0	.0	.0	.0	.0	.0	.0	.0	.0
22. Massachusetts	MA	.N	.0	.0	.0	.0	.0	.0	.0	.0	.0
23. Michigan	MI	L	67,874,053	.0	.0	.0	.0	.0	67,874,053	.0	.0
24. Minnesota	MN	.N	.0	.0	.0	.0	.0	.0	.0	.0	.0
25. Mississippi	MS	.N	.0	.0	.0	.0	.0	.0	.0	.0	.0
26. Missouri	MO	.N	.0	.0	.0	.0	.0	.0	.0	.0	.0
27. Montana	MT	.N	.0	.0	.0	.0	.0	.0	.0	.0	.0
28. Nebraska	NE	.N	.0	.0	.0	.0	.0	.0	.0	.0	.0
29. Nevada	NV	.N	.0	.0	.0	.0	.0	.0	.0	.0	.0
30. New Hampshire	NH	.N	.0	.0	.0	.0	.0	.0	.0	.0	.0
31. New Jersey	NJ	.N	.0	.0	.0	.0	.0	.0	.0	.0	.0
32. New Mexico	NM	.N	.0	.0	.0	.0	.0	.0	.0	.0	.0
33. New York	NY	.N	.0	.0	.0	.0	.0	.0	.0	.0	.0
34. North Carolina	NC	.N	.0	.0	.0	.0	.0	.0	.0	.0	.0
35. North Dakota	ND	.N	.0	.0	.0	.0	.0	.0	.0	.0	.0
36. Ohio	OH	.N	.0	.0	.0	.0	.0	.0	.0	.0	.0
37. Oklahoma	OK	.N	.0	.0	.0	.0	.0	.0	.0	.0	.0
38. Oregon	OR	.N	.0	.0	.0	.0	.0	.0	.0	.0	.0
39. Pennsylvania	PA	.N	.0	.0	.0	.0	.0	.0	.0	.0	.0
40. Rhode Island	RI	.N	.0	.0	.0	.0	.0	.0	.0	.0	.0
41. South Carolina	SC	.N	.0	.0	.0	.0	.0	.0	.0	.0	.0
42. South Dakota	SD	.N	.0	.0	.0	.0	.0	.0	.0	.0	.0
43. Tennessee	TN	.N	.0	.0	.0	.0	.0	.0	.0	.0	.0
44. Texas	TX	.N	.0	.0	.0	.0	.0	.0	.0	.0	.0
45. Utah	UT	.N	.0	.0	.0	.0	.0	.0	.0	.0	.0
46. Vermont	VT	.N	.0	.0	.0	.0	.0	.0	.0	.0	.0
47. Virginia	VA	.N	.0	.0	.0	.0	.0	.0	.0	.0	.0
48. Washington	WA	.N	.0	.0	.0	.0	.0	.0	.0	.0	.0
49. West Virginia	WV	.N	.0	.0	.0	.0	.0	.0	.0	.0	.0
50. Wisconsin	WI	.N	.0	.0	.0	.0	.0	.0	.0	.0	.0
51. Wyoming	WY	.N	.0	.0	.0	.0	.0	.0	.0	.0	.0
52. American Samoa	AS	.N	.0	.0	.0	.0	.0	.0	.0	.0	.0
53. Guam	GU	.N	.0	.0	.0	.0	.0	.0	.0	.0	.0
54. Puerto Rico	PR	.N	.0	.0	.0	.0	.0	.0	.0	.0	.0
55. U.S. Virgin Islands	VI	.N	.0	.0	.0	.0	.0	.0	.0	.0	.0
56. Northern Mariana Islands	MP	.N	.0	.0	.0	.0	.0	.0	.0	.0	.0
57. Canada	CAN	.N	.0	.0	.0	.0	.0	.0	.0	.0	.0
58. Aggregate Other Aliens	OT	XXX	.0	.0	.0	.0	.0	.0	.0	.0	.0
59. Subtotal	XXX		67,874,053	.0	.0	.0	.0	.0	67,874,053	.0	.0
60. Reporting Entity Contributions for Employee Benefit Plans	XXX		.0	.0	.0	.0	.0	.0	.0	.0	.0
61. Totals (Direct Business)	XXX		67,874,053	0	0	0	0	0	67,874,053	0	0
DETAILS OF WRITE-INS											
58001.	XXX										
58002.	XXX										
58003.	XXX										
58998. Summary of remaining write-ins for Line 58 from overflow page	XXX		.0	.0	.0	.0	.0	.0	.0	.0	.0
58999. Totals (Lines 58001 through 58003 plus 58998)(Line 58 above)	XXX		0	0	0	0	0	0	0	0	0

(a) Active Status Counts:

- 1. L - Licensed or Chartered - Licensed insurance carrier or domiciled RRG..... 1
- 2. R - Registered - Non-domiciled RRGs..... 0
- 3. E - Eligible - Reporting entities eligible or approved to write surplus lines in the state. 0
- 4. Q - Qualified - Qualified or accredited reinsurer..... 0
- 5. N - None of the above - Not allowed to write business in the state..... 56

SCHEDULE Y - INFORMATION CONCERNING ACTIVITIES OF INSURER MEMBERS OF A HOLDING COMPANY GROUP
PART 1 - ORGANIZATIONAL CHART



STATEMENT AS OF JUNE 30, 2024 OF THE University of Michigan Health Plan

SCHEDULE Y

PART 1A - DETAIL OF INSURANCE HOLDING COMPANY SYSTEM

1	2	3	4	5	6	7	8	9	10	11	12	13	14	15	16
Group Code	Group Name	NAIC Company Code	ID Number	Federal RSSD	CIK	Name of Securities Exchange if Publicly Traded (U.S. or International)	Names of Parent, Subsidiaries Or Affiliates	Domiciliary Location	Relationship to Reporting Entity	Directly Controlled by (Name of Entity/Person)	Type of Control (Ownership, Board, Management, Attorney-in-Fact, Influence, Other)	If Control is Ownership Provide Percentage	Ultimate Controlling Entity(ies)/Person(s)	Is an SCA Filing Required? (Yes/No)	*
3408	University of Michigan Health Plan Group	95849	38-2594856				Physicians Health Network	..MI.....NIA.....	University of Michigan Health Plan Holdings, LLC.	Ownership.....	100.000	UM Health Corp.	...NO.....	
3408	University of Michigan Health Plan Group	12816	38-2356288				University of Michigan Health Plan University of Michigan Health Insurance Company	..MI.....RE.....	University of Michigan Health Plan Holdings, LLC.	Ownership.....	100.000	UM Health Corp.	...NO.....	
3408	University of Michigan Health Plan Group	16555	20-5565219				University of Michigan Health Service Company	..MI.....IA.....	University of Michigan Health Plan	Ownership.....	100.000	UM Health Corp.	...NO.....	
			38-3344741					..MI.....NIA.....	University of Michigan Health Plan	Ownership.....	100.000	UM Health Corp.	...YES.....	
			83-2766121				University of Michigan Health Medicare University of Michigan Health Plan Holdings, LLC.	..MI.....IA.....	University of Michigan Health Plan	Ownership.....	100.000	UM Health Corp.	...NO.....	
			83-3965697					..MI.....UDP.....	UM Health Corp.	Ownership.....	90.000	UM Health Corp.	...NO.....	

Asterisk	Explanation
----------	-------------

SUPPLEMENTAL EXHIBITS AND SCHEDULES INTERROGATORIES

The following supplemental reports are required to be filed as part of your statement filing. However, in the event that your company does not transact the type of business for which the special report must be filed, your response of NO to the specific interrogatory will be accepted in lieu of filing a "NONE" report and a bar code will be printed below. If the supplement is required of your company but is not being filed for whatever reason enter SEE EXPLANATION and provide an explanation following the interrogatory questions.

	Response
1. Will the Medicare Part D Coverage Supplement be filed with the state of domicile and the NAIC with this statement?	NO

AUGUST FILING

2. Will the regulator-only (non-public) Communication of Internal Control Related Matters Noted in Audit be filed with the state of domicile and electronically with the NAIC (as a regulator-only non-public document) by August 1? The response for 1st and 3rd quarters should be N/A. A NO response resulting with a bar code is only appropriate in the 2nd quarter.	NO
--	----

Explanation:

- 1.
- 2.

Bar Code:

1. Medicare Part D Coverage Supplement [Document Identifier 365]



2. Communication of Internal Control Related Matters Noted in Audit (2nd Quarter Only) [Document Identifier 222]



OVERFLOW PAGE FOR WRITE-INS

NONE

STATEMENT AS OF JUNE 30, 2024 OF THE University of Michigan Health Plan

SCHEDULE A - VERIFICATION

Real Estate

	1 Year to Date	2 Prior Year Ended December 31
1. Book/adjusted carrying value, December 31 of prior year		
2. Cost of acquired:		
2.1 Actual cost at time of acquisition		
2.2 Additional investment made after acquisition		
3. Current year change in encumbrances		
4. Total gain (loss) on disposals		
5. Deduct amounts received on disposals		
6. Total foreign exchange change in book/adjusted carrying value		
7. Deduct current year's other than temporary impairment recognized		
8. Deduct current year's depreciation		
9. Book/adjusted carrying value at the end of current period (Lines 1+2+3+4-5+6-7-8)		
10. Deduct total nonadmitted amounts		
11. Statement value at end of current period (Line 9 minus Line 10)		

NONE

SCHEDULE B - VERIFICATION

Mortgage Loans

	1 Year to Date	2 Prior Year Ended December 31
1. Book value/recorded investment excluding accrued interest, December 31 of prior year		
2. Cost of acquired:		
2.1 Actual cost at time of acquisition		
2.2 Additional investment made after acquisition		
3. Capitalized deferred interest and other		
4. Accrual of discount		
5. Unrealized valuation increase/(decrease)		
6. Total gain (loss) on disposals		
7. Deduct amounts received on disposals		
8. Deduct amortization of premium and mortgage interest paid and commitment fees		
9. Total foreign exchange change in book value/recorded investment excluding accrued interest		
10. Deduct current year's other than temporary impairment recognized		
11. Book value/recorded investment excluding accrued interest at end of current period (Lines 1+2+3+4+5+6-7-8+9-10)		
12. Total valuation allowance		
13. Subtotal (Line 11 plus Line 12)		
14. Deduct total nonadmitted amounts		
15. Statement value at end of current period (Line 13 minus Line 14)		

NONE

SCHEDULE BA - VERIFICATION

Other Long-Term Invested Assets

	1 Year to Date	2 Prior Year Ended December 31
1. Book/adjusted carrying value, December 31 of prior year	14,033,114	12,298,892
2. Cost of acquired:		
2.1 Actual cost at time of acquisition	0	0
2.2 Additional investment made after acquisition	0	22,800,000
3. Capitalized deferred interest and other	0	0
4. Accrual of discount	0	0
5. Unrealized valuation increase/(decrease)	(1,824,607)	(21,065,778)
6. Total gain (loss) on disposals	0	0
7. Deduct amounts received on disposals	0	0
8. Deduct amortization of premium and depreciation	0	0
9. Total foreign exchange change in book/adjusted carrying value	0	0
10. Deduct current year's other than temporary impairment recognized	0	0
11. Book/adjusted carrying value at end of current period (Lines 1+2+3+4+5+6-7-8+9-10)	12,208,507	14,033,114
12. Deduct total nonadmitted amounts	0	0
13. Statement value at end of current period (Line 11 minus Line 12)	12,208,507	14,033,114

SCHEDULE D - VERIFICATION

Bonds and Stocks

	1 Year to Date	2 Prior Year Ended December 31
1. Book/adjusted carrying value of bonds and stocks, December 31 of prior year	10,707,576	13,161,809
2. Cost of bonds and stocks acquired	46,681	3,149,613
3. Accrual of discount	0	0
4. Unrealized valuation increase/(decrease)	(29,662)	(1,825,899)
5. Total gain (loss) on disposals	2,194	(277,947)
6. Deduct consideration for bonds and stocks disposed of	37,357	3,500,000
7. Deduct amortization of premium	0	0
8. Total foreign exchange change in book/adjusted carrying value	0	0
9. Deduct current year's other than temporary impairment recognized	0	0
10. Total investment income recognized as a result of prepayment penalties and/or acceleration fees	0	0
11. Book/adjusted carrying value at end of current period (Lines 1+2+3+4+5-6-7+8-9+10)	10,689,432	10,707,576
12. Deduct total nonadmitted amounts	0	0
13. Statement value at end of current period (Line 11 minus Line 12)	10,689,432	10,707,576

Schedule D - Part 1B - Bonds and Preferred Stock by NAIC Designation

N O N E

Schedule DA - Part 1 - Short-Term Investments

N O N E

Schedule DA - Verification - Short-Term Investments

N O N E

Schedule DB - Part A - Verification - Options, Caps, Floors, Collars, Swaps and Forwards

N O N E

Schedule DB - Part B - Verification - Futures Contracts

N O N E

Schedule DB - Part C - Section 1 - Replication (Synthetic Asset) Transactions (RSATs) Open

N O N E

Schedule DB-Part C-Section 2-Reconciliation of Replication (Synthetic Asset) Transactions Open

N O N E

Schedule DB - Verification - Book/Adjusted Carrying Value, Fair Value and Potential Exposure of
Derivatives

N O N E

SCHEDULE E - PART 2 - VERIFICATION

(Cash Equivalents)

	1	2
	Year To Date	Prior Year Ended December 31
1. Book/adjusted carrying value, December 31 of prior year	26,312,347	26,355,875
2. Cost of cash equivalents acquired	54,217,751	163,022,065
3. Accrual of discount	0	0
4. Unrealized valuation increase/(decrease)	(5)	(5,556)
5. Total gain (loss) on disposals	0	4,405
6. Deduct consideration received on disposals	60,577,939	163,064,442
7. Deduct amortization of premium	0	0
8. Total foreign exchange change in book/adjusted carrying value	0	0
9. Deduct current year's other than temporary impairment recognized	0	0
10. Book/adjusted carrying value at end of current period (Lines 1+2+3+4+5-6-7+8-9)	19,952,154	26,312,347
11. Deduct total nonadmitted amounts	0	0
12. Statement value at end of current period (Line 10 minus Line 11)	19,952,154	26,312,347

Schedule A - Part 2 - Real Estate Acquired and Additions Made

N O N E

Schedule A - Part 3 - Real Estate Disposed

N O N E

Schedule B - Part 2 - Mortgage Loans Acquired and Additions Made

N O N E

Schedule B - Part 3 - Mortgage Loans Disposed, Transferred or Repaid

N O N E

Schedule BA - Part 2 - Other Long-Term Invested Assets Acquired and Additions Made

N O N E

Schedule BA - Part 3 - Other Long-Term Invested Assets Disposed, Transferred or Repaid

N O N E

STATEMENT AS OF JUNE 30, 2024 OF THE University of Michigan Health Plan

SCHEDULE D - PART 3

Show All Long-Term Bonds and Stock Acquired During the Current Quarter

1 CUSIP Identification	2 Description	3 Foreign	4 Date Acquired	5 Name of Vendor	6 Number of Shares of Stock	7 Actual Cost	8 Par Value	9 Paid for Accrued Interest and Dividends	10 NAIC Designation, NAIC Designation Modifier and SVO Admini- strative Symbol
2509999997. Total - Bonds - Part 3						0	0	0	XXX
2509999998. Total - Bonds - Part 5						XXX	XXX	XXX	XXX
2509999999. Total - Bonds						0	0	0	XXX
4509999997. Total - Preferred Stocks - Part 3						0	XXX	0	XXX
4509999998. Total - Preferred Stocks - Part 5						XXX	XXX	XXX	XXX
4509999999. Total - Preferred Stocks						0	XXX	0	XXX
783980-20-4	SEI Institutional Investment Trust - Core Fixed Income		06/28/2024	NON-BROKER TRADE, BO	483.000	4,162		0	
783980-62-6	SEI Institutional Investment Trust - S&P 500 Index Fund		04/04/2024	NON-BROKER TRADE, BO	27.000	588		0	
783980-65-9	SEI Extended Market Index Fund		04/04/2024	NON-BROKER TRADE, BO	6.000	107		0	
783980-81-6	SEI Institutional Investment Trust - Small/Mid Cap		04/04/2024	NON-BROKER TRADE, BO	10.000	106		0	
783980-82-4	SEI Institutional Investment Trust - Large Cap		04/04/2024	NON-BROKER TRADE, BO	50.000	561		0	
5329999999. Subtotal - Common Stocks - Mutual Funds - Designations Not Assigned by the SVO						5,524	XXX	0	XXX
5989999997. Total - Common Stocks - Part 3						5,524	XXX	0	XXX
5989999998. Total - Common Stocks - Part 5						XXX	XXX	XXX	XXX
5989999999. Total - Common Stocks						5,524	XXX	0	XXX
5999999999. Total - Preferred and Common Stocks						5,524	XXX	0	XXX
6009999999 - Totals						5,524	XXX	0	XXX

Schedule D - Part 4 - Long-Term Bonds and Stocks Sold, Redeemed or Otherwise Disposed Of

N O N E

Schedule DB - Part A - Section 1 - Options, Caps, Floors, Collars, Swaps and Forwards Open

N O N E

Schedule DB - Part B - Section 1 - Futures Contracts Open

N O N E

Schedule DB - Part B - Section 1B - Brokers with whom cash deposits have been made

N O N E

Schedule DB - Part D - Section 1 - Counterparty Exposure for Derivative Instruments Open

N O N E

Schedule DB - Part D-Section 2 - Collateral for Derivative Instruments Open - Pledged By

N O N E

Schedule DB - Part D-Section 2 - Collateral for Derivative Instruments Open - Pledged To

N O N E

Schedule DB - Part E - Derivatives Hedging Variable Annuity Guarantees

N O N E

Schedule DL - Part 1 - Reinvested Collateral Assets Owned

N O N E

Schedule DL - Part 2 - Reinvested Collateral Assets Owned

N O N E

