



HEALTH QUARTERLY STATEMENT

AS OF SEPTEMBER 30, 2024
OF THE CONDITION AND AFFAIRS OF THE

Aetna Better Health of Michigan Inc.

NAIC Group Code 0001 0001 NAIC Company Code 12193 Employer's ID Number 20-1052897
(Current) (Prior)

Organized under the Laws of Michigan State of Domicile or Port of Entry MI

Country of Domicile United States of America

Licensed as business type: Health Maintenance Organization

Is HMO Federally Qualified? Yes [] No [X]

Incorporated/Organized 04/22/2004 Commenced Business 10/01/2004

Statutory Home Office 28588 Northwestern Highway, Suite 380B Southfield, MI, US 48034
(Street and Number) (City or Town, State, Country and Zip Code)

Main Administrative Office 28588 Northwestern Highway, Suite 380B
(Street and Number)
Southfield, MI, US 48034 800-831-1166
(City or Town, State, Country and Zip Code) (Area Code) (Telephone Number)

Mail Address Attn: Stat Compliance; P.O. Box 818048 Cleveland, OH, US 44181-8048
(Street and Number or P.O. Box) (City or Town, State, Country and Zip Code)

Primary Location of Books and Records 28588 Northwestern Highway, Suite 380B
(Street and Number)
Southfield, MI, US 48034 800-831-1166
(City or Town, State, Country and Zip Code) (Area Code) (Telephone Number)

Internet Website Address www.aetnabetterhealth.com

Statutory Statement Contact Kim E. Roth 215-775-6508
(Name) (Area Code) (Telephone Number)
StatutoryReporting@aetna.com 860-262-7767
(E-mail Address) (FAX Number)

OFFICERS

Chief Executive Officer and President Teressa Deonne Smith Corporate Controller Steven Matthew Conte
Vice President and Secretary Thorne Washburn Clark

OTHER

Derek Scott Blunt, Senior Investment Officer Frank Ferris Chronister III, Assistant Controller Aaron Jacob Igdalsky, Vice President and Assistant Secretary
Peter Keller, Assistant Controller Bryan Sheppard Nazworth, Chief Financial Officer Tracy Louise Smith, Vice President and Treasurer
Whitney Dorothy Todisco, Assistant Controller

DIRECTORS OR TRUSTEES

Kimberly Sue Foltz Bryan Sheppard Nazworth
Teressa Deonne Smith Harvey Douglas Turner

The officers of this reporting entity being duly sworn, each depose and say that they are the described officers of said reporting entity, and that on the reporting period stated above, all of the herein described assets were the absolute property of the said reporting entity, free and clear from any liens or claims thereon, except as herein stated, and that this statement, together with related exhibits, schedules and explanations therein contained, annexed or referred to, is a full and true statement of all the assets and liabilities and of the condition and affairs of the said reporting entity as of the reporting period stated above, and of its income and deductions therefrom for the period ended, and have been completed in accordance with the NAIC Annual Statement Instructions and Accounting Practices and Procedures manual except to the extent that: (1) state law may differ; or, (2) that state rules or regulations require differences in reporting not related to accounting practices and procedures, according to the best of their information, knowledge and belief, respectively. Furthermore, the scope of this attestation by the described officers also includes the related corresponding electronic filing with the NAIC, when required, that is an exact copy (except for formatting differences due to electronic filing) of the enclosed statement. The electronic filing may be requested by various regulators in lieu of or in addition to the enclosed statement.

Teressa Deonne Smith
Chief Executive Officer and President

Thorne Washburn Clark
Vice President and Secretary

Steven Matthew Conte
Corporate Controller

State of..... Michigan
County of..... Wayne

State of..... Pennsylvania
County of..... Montgomery

State of..... Connecticut
County of..... Hartford

Subscribed and sworn to before me this

Subscribed and sworn to before me this

Subscribed and sworn to before me this

17 day of October, 2024
Rochelle D. Jenkins
NOTARY PUBLIC (Seal)

25th day of October, 2024
Kim E. Roth
NOTARY PUBLIC (Seal)

25 day of October, 2024
Victoria Wollschlager
NOTARY PUBLIC (Seal)

ROCHELLE D. JENKINS
NOTARY PUBLIC, STATE OF MI
COUNTY OF WAYNE
MY COMMISSION EXPIRES Dec 25, 2024
ACTING IN COUNTY OF Wayne

Commonwealth of Pennsylvania - Notary Seal
KIM E. ROTH, Notary Public
Montgomery County
My Commission Expires April 25, 2025
Commission Number 1141410

VICTORIA WOLLSCHLAGER
Notary Public, State of Connecticut
My Commission Expires Sep. 30, 2027

- a. Is this an original filing? Yes [X] No []
b. If no,
1. State the amendment number.....
2. Date filed
3. Number of pages attached.....

STATEMENT AS OF SEPTEMBER 30, 2024 OF THE Aetna Better Health of Michigan Inc.

ASSETS

	Current Statement Date			4 December 31 Prior Year Net Admitted Assets
	1 Assets	2 Nonadmitted Assets	3 Net Admitted Assets (Cols. 1 - 2)	
1. Bonds	134,628,654	0	134,628,654	10,199,260
2. Stocks:				
2.1 Preferred stocks	0	0	0	0
2.2 Common stocks	0	0	0	0
3. Mortgage loans on real estate:				
3.1 First liens	2,881,250	0	2,881,250	0
3.2 Other than first liens.....	0	0	0	0
4. Real estate:				
4.1 Properties occupied by the company (less \$0 encumbrances)	0	0	0	0
4.2 Properties held for the production of income (less \$0 encumbrances)	0	0	0	0
4.3 Properties held for sale (less \$0 encumbrances)	0	0	0	0
5. Cash (\$6,025,717), cash equivalents (\$76,556,421) and short-term investments (\$0)	82,582,138	0	82,582,138	21,915,926
6. Contract loans (including \$0 premium notes)	0	0	0	0
7. Derivatives	0	0	0	0
8. Other invested assets	0	0	0	0
9. Receivables for securities	0	0	0	0
10. Securities lending reinvested collateral assets	0	0	0	0
11. Aggregate write-ins for invested assets	0	0	0	0
12. Subtotals, cash and invested assets (Lines 1 to 11)	220,092,042	0	220,092,042	32,115,186
13. Title plants less \$0 charged off (for Title insurers only)	0	0	0	0
14. Investment income due and accrued	1,506,508	0	1,506,508	59,184
15. Premiums and considerations:				
15.1 Uncollected premiums and agents' balances in the course of collection	7,388,085	108,915	7,279,170	6,400,939
15.2 Deferred premiums, agents' balances and installments booked but deferred and not yet due (including \$0 earned but unbilled premiums)	0	0	0	0
15.3 Accrued retrospective premiums (\$207,144) and contracts subject to redetermination (\$7,349,783)	7,556,927	0	7,556,927	14,157,478
16. Reinsurance:				
16.1 Amounts recoverable from reinsurers	0	0	0	0
16.2 Funds held by or deposited with reinsured companies	0	0	0	0
16.3 Other amounts receivable under reinsurance contracts	0	0	0	0
17. Amounts receivable relating to uninsured plans	1,947,196	0	1,947,196	1,309,635
18.1 Current federal and foreign income tax recoverable and interest thereon	4,680,727	0	4,680,727	1,722,086
18.2 Net deferred tax asset	2,410,698	33,363	2,377,335	2,377,335
19. Guaranty funds receivable or on deposit	0	0	0	0
20. Electronic data processing equipment and software	0	0	0	0
21. Furniture and equipment, including health care delivery assets (\$0)	0	0	0	0
22. Net adjustment in assets and liabilities due to foreign exchange rates	0	0	0	0
23. Receivables from parent, subsidiaries and affiliates	0	0	0	129,103,092
24. Health care (\$4,057,117) and other amounts receivable	9,411,376	5,354,259	4,057,117	4,304,319
25. Aggregate write-ins for other than invested assets	9,996,549	924,249	9,072,300	11,001,424
26. Total assets excluding Separate Accounts, Segregated Accounts and Protected Cell Accounts (Lines 12 to 25)	264,990,108	6,420,786	258,569,322	202,550,678
27. From Separate Accounts, Segregated Accounts and Protected Cell Accounts	0	0	0	0
28. Total (Lines 26 and 27)	264,990,108	6,420,786	258,569,322	202,550,678
DETAILS OF WRITE-INS				
1101.				
1102.				
1103.				
1198. Summary of remaining write-ins for Line 11 from overflow page	0	0	0	0
1199. Totals (Lines 1101 through 1103 plus 1198)(Line 11 above)	0	0	0	0
2501. Insurance provider assessment	8,352,605	0	8,352,605	10,568,327
2502. Current state income tax receivable	719,695	0	719,695	433,097
2503. Prepaid expenses	924,249	924,249	0	0
2598. Summary of remaining write-ins for Line 25 from overflow page	0	0	0	0
2599. Totals (Lines 2501 through 2503 plus 2598)(Line 25 above)	9,996,549	924,249	9,072,300	11,001,424

LIABILITIES, CAPITAL AND SURPLUS

	Current Period			Prior Year
	1 Covered	2 Uncovered	3 Total	4 Total
1. Claims unpaid (less \$ 97,338 reinsurance ceded)	83,379,455	7,735,966	91,115,421	77,850,601
2. Accrued medical incentive pool and bonus amounts	2,683,211	0	2,683,211	3,757,837
3. Unpaid claims adjustment expenses	1,514,998	0	1,514,998	1,739,561
4. Aggregate health policy reserves, including the liability of \$ 0 for medical loss ratio rebate per the Public Health Service Act	27,875,931	0	27,875,931	8,049,624
5. Aggregate life policy reserves	0	0	0	0
6. Property/casualty unearned premium reserve	0	0	0	0
7. Aggregate health claim reserves	0	0	0	0
8. Premiums received in advance	14,918	0	14,918	6,103
9. General expenses due or accrued	8,352,813	0	8,352,813	10,568,445
10.1 Current federal and foreign income tax payable and interest thereon (including \$ 0 on realized gains (losses))	0	0	0	0
10.2 Net deferred tax liability	0	0	0	0
11. Ceded reinsurance premiums payable	0	0	0	0
12. Amounts withheld or retained for the account of others	151	0	151	0
13. Remittances and items not allocated	938,448	0	938,448	1,555,362
14. Borrowed money (including \$ 0 current) and interest thereon \$ 0 (including \$ 0 current)	0	0	0	0
15. Amounts due to parent, subsidiaries and affiliates	45,253,052	0	45,253,052	0
16. Derivatives	0	0	0	0
17. Payable for securities	0	0	0	0
18. Payable for securities lending	0	0	0	0
19. Funds held under reinsurance treaties (with \$ 0 authorized reinsurers, \$ 521,356 unauthorized reinsurers and \$ 0 certified reinsurers)	521,356	0	521,356	662,120
20. Reinsurance in unauthorized and certified (\$ 0) companies	0	0	0	0
21. Net adjustments in assets and liabilities due to foreign exchange rates	0	0	0	0
22. Liability for amounts held under uninsured plans	11,092,403	0	11,092,403	10,739,545
23. Aggregate write-ins for other liabilities (including \$ 0 current)	839,243	0	839,243	805,887
24. Total liabilities (Lines 1 to 23)	182,465,979	7,735,966	190,201,945	115,735,085
25. Aggregate write-ins for special surplus funds	XXX	XXX	0	0
26. Common capital stock	XXX	XXX	1,000,000	1,000,000
27. Preferred capital stock	XXX	XXX	0	0
28. Gross paid in and contributed surplus	XXX	XXX	34,601,000	34,601,000
29. Surplus notes	XXX	XXX	0	0
30. Aggregate write-ins for other than special surplus funds	XXX	XXX	0	0
31. Unassigned funds (surplus)	XXX	XXX	32,766,377	51,214,593
32. Less treasury stock, at cost:				
32.1 0 shares common (value included in Line 26 \$ 0)	XXX	XXX	0	0
32.2 0 shares preferred (value included in Line 27 \$ 0)	XXX	XXX	0	0
33. Total capital and surplus (Lines 25 to 31 minus Line 32)	XXX	XXX	68,367,377	86,815,593
34. Total liabilities, capital and surplus (Lines 24 and 33)	XXX	XXX	258,569,322	202,550,678
DETAILS OF WRITE-INS				
2301. Abandoned property liability	838,168	0	838,168	805,887
2302. Unearned investment income	1,075	0	1,075	0
2303.				
2398. Summary of remaining write-ins for Line 23 from overflow page	0	0	0	0
2399. Totals (Lines 2301 through 2303 plus 2398)(Line 23 above)	839,243	0	839,243	805,887
2501.	XXX	XXX		
2502.	XXX	XXX		
2503.	XXX	XXX		
2598. Summary of remaining write-ins for Line 25 from overflow page	XXX	XXX	0	0
2599. Totals (Lines 2501 through 2503 plus 2598)(Line 25 above)	XXX	XXX	0	0
3001.	XXX	XXX		
3002.	XXX	XXX		
3003.	XXX	XXX		
3098. Summary of remaining write-ins for Line 30 from overflow page	XXX	XXX	0	0
3099. Totals (Lines 3001 through 3003 plus 3098)(Line 30 above)	XXX	XXX	0	0

STATEMENT OF REVENUE AND EXPENSES

	Current Year To Date		Prior Year To Date	Prior Year Ended December 31
	1 Uncovered	2 Total	3 Total	4 Total
1. Member Months	XXX	581,256	667,242	869,931
2. Net premium income (including \$ 0 non-health premium income)	XXX	461,238,492	448,282,034	593,181,332
3. Change in unearned premium reserves and reserve for rate credits	XXX	0	0	0
4. Fee-for-service (net of \$ 0 medical expenses)	XXX	0	0	0
5. Risk revenue	XXX	0	0	0
6. Aggregate write-ins for other health care related revenues	XXX	0	0	0
7. Aggregate write-ins for other non-health revenues	XXX	0	0	0
8. Total revenues (Lines 2 to 7)	XXX	461,238,492	448,282,034	593,181,332
Hospital and Medical:				
9. Hospital/medical benefits	24,906,455	270,428,397	234,457,489	318,141,265
10. Other professional services	3,472,426	37,702,781	30,721,736	40,092,866
11. Outside referrals	9,079,228	9,079,228	8,516,363	10,381,763
12. Emergency room and out-of-area	1,761,555	19,126,544	20,810,730	27,131,879
13. Prescription drugs	0	57,779,788	55,906,659	74,055,413
14. Aggregate write-ins for other hospital and medical	0	0	0	0
15. Incentive pool, withhold adjustments and bonus amounts	0	3,872,146	1,233,702	1,229,009
16. Subtotal (Lines 9 to 15)	39,219,664	397,988,884	351,646,679	471,032,195
Less:				
17. Net reinsurance recoveries	0	1,340,259	327,545	583,738
18. Total hospital and medical (Lines 16 minus 17)	39,219,664	396,648,625	351,319,134	470,448,457
19. Non-health claims (net)	0	0	0	0
20. Claims adjustment expenses, including \$ 19,170,102 cost containment expenses	0	24,891,683	25,514,977	33,719,536
21. General administrative expenses	0	50,959,382	55,924,908	74,557,649
22. Increase in reserves for life and accident and health contracts (including \$ 0 increase in reserves for life only)	0	20,813,745	861,311	0
23. Total underwriting deductions (Lines 18 through 22)	39,219,664	493,313,435	433,620,330	578,725,642
24. Net underwriting gain or (loss) (Lines 8 minus 23)	XXX	(32,074,943)	14,661,704	14,455,690
25. Net investment income earned	0	7,183,671	5,972,102	7,633,409
26. Net realized capital gains (losses) less capital gains tax of \$ (244)	0	(884)	462	516
27. Net investment gains (losses) (Lines 25 plus 26)	0	7,182,787	5,972,564	7,633,925
28. Net gain or (loss) from agents' or premium balances charged off [(amount recovered \$ 0) (amount charged off \$ 0)]	0	0	0	0
29. Aggregate write-ins for other income or expenses	0	0	0	0
30. Net income or (loss) after capital gains tax and before all other federal income taxes (Lines 24 plus 27 plus 28 plus 29)	XXX	(24,892,156)	20,634,268	22,089,615
31. Federal and foreign income taxes incurred	XXX	(6,161,815)	4,449,544	3,282,548
32. Net income (loss) (Lines 30 minus 31)	XXX	(18,730,341)	16,184,724	18,807,067
DETAILS OF WRITE-INS				
0601.	XXX			
0602.	XXX			
0603.	XXX			
0698. Summary of remaining write-ins for Line 6 from overflow page	XXX	0	0	0
0699. Totals (Lines 0601 through 0603 plus 0698)(Line 6 above)	XXX	0	0	0
0701.	XXX			
0702.	XXX			
0703.	XXX			
0798. Summary of remaining write-ins for Line 7 from overflow page	XXX	0	0	0
0799. Totals (Lines 0701 through 0703 plus 0798)(Line 7 above)	XXX	0	0	0
1401.				
1402.				
1403.				
1498. Summary of remaining write-ins for Line 14 from overflow page	0	0	0	0
1499. Totals (Lines 1401 through 1403 plus 1498)(Line 14 above)	0	0	0	0
2901.				
2902.				
2903.				
2998. Summary of remaining write-ins for Line 29 from overflow page	0	0	0	0
2999. Totals (Lines 2901 through 2903 plus 2998)(Line 29 above)	0	0	0	0

STATEMENT OF REVENUE AND EXPENSES (Continued)

	1 Current Year to Date	2 Prior Year to Date	3 Prior Year Ended December 31
CAPITAL AND SURPLUS ACCOUNT			
33. Capital and surplus prior reporting year.....	86,815,593	70,004,867	70,004,867
34. Net income or (loss) from Line 32	(18,730,341)	16,184,724	18,807,067
35. Change in valuation basis of aggregate policy and claim reserves	0	0	0
36. Change in net unrealized capital gains (losses) less capital gains tax of \$0	0	0	0
37. Change in net unrealized foreign exchange capital gain or (loss)	0	0	0
38. Change in net deferred income tax	0	1,029,182	611,782
39. Change in nonadmitted assets	282,125	(507,472)	(3,224,844)
40. Change in unauthorized and certified reinsurance	0	0	0
41. Change in treasury stock	0	0	0
42. Change in surplus notes	0	0	0
43. Cumulative effect of changes in accounting principles.....	0	0	0
44. Capital Changes:			
44.1 Paid in	0	0	0
44.2 Transferred from surplus (Stock Dividend).....	0	0	0
44.3 Transferred to surplus.....	0	0	0
45. Surplus adjustments:			
45.1 Paid in	0	0	0
45.2 Transferred to capital (Stock Dividend)	0	0	0
45.3 Transferred from capital	0	0	0
46. Dividends to stockholders	0	0	0
47. Aggregate write-ins for gains or (losses) in surplus	0	0	616,721
48. Net change in capital & surplus (Lines 34 to 47)	(18,448,216)	16,706,434	16,810,726
49. Capital and surplus end of reporting period (Line 33 plus 48)	68,367,377	86,711,301	86,815,593
DETAILS OF WRITE-INS			
4701. Prior period adjustment – Premium deficiency reserve	0	0	780,659
4702. Prior period adjustment – Deferred tax impact on Premium deficiency reserve	0	0	(163,938)
4703.			
4798. Summary of remaining write-ins for Line 47 from overflow page	0	0	0
4799. Totals (Lines 4701 through 4703 plus 4798)(Line 47 above)	0	0	616,721

CASH FLOW

	1 Current Year To Date	2 Prior Year To Date	3 Prior Year Ended December 31
Cash from Operations			
1. Premiums collected net of reinsurance	465,971,764	466,860,311	589,557,650
2. Net investment income	5,648,824	5,969,678	7,667,704
3. Miscellaneous income	0	0	0
4. Total (Lines 1 to 3)	471,620,588	472,829,989	597,225,354
5. Benefit and loss related payments	383,852,073	360,212,366	486,386,546
6. Net transfers to Separate Accounts, Segregated Accounts and Protected Cell Accounts	0	0	0
7. Commissions, expenses paid and aggregate write-ins for deductions	76,713,446	76,113,954	108,532,535
8. Dividends paid to policyholders	0	0	0
9. Federal and foreign income taxes paid (recovered) net of \$0 tax on capital gains (losses)	(3,203,418)	5,950,468	1,986,764
10. Total (Lines 5 through 9)	457,362,101	442,276,788	596,905,845
11. Net cash from operations (Line 4 minus Line 10)	14,258,487	30,553,201	319,509
Cash from Investments			
12. Proceeds from investments sold, matured or repaid:			
12.1 Bonds	2,061,700	5,121,675	5,161,773
12.2 Stocks	0	0	0
12.3 Mortgage loans	0	0	0
12.4 Real estate	0	0	0
12.5 Other invested assets	0	0	0
12.6 Net gains or (losses) on cash, cash equivalents and short-term investments	257	4,728	4,789
12.7 Miscellaneous proceeds	0	0	0
12.8 Total investment proceeds (Lines 12.1 to 12.7)	2,061,957	5,126,403	5,166,562
13. Cost of investments acquired (long-term only):			
13.1 Bonds	126,404,956	0	0
13.2 Stocks	0	0	0
13.3 Mortgage loans	2,881,250	0	0
13.4 Real estate	0	0	0
13.5 Other invested assets	0	0	0
13.6 Miscellaneous applications	0	6,987,886	6,987,886
13.7 Total investments acquired (Lines 13.1 to 13.6)	129,286,206	6,987,886	6,987,886
14. Net increase (or decrease) in contract loans and premium notes	0	0	0
15. Net cash from investments (Line 12.8 minus Line 13.7 and Line 14)	(127,224,249)	(1,861,483)	(1,821,324)
Cash from Financing and Miscellaneous Sources			
16. Cash provided (applied):			
16.1 Surplus notes, capital notes	0	0	0
16.2 Capital and paid in surplus, less treasury stock	0	0	0
16.3 Borrowed funds	0	0	0
16.4 Net deposits on deposit-type contracts and other insurance liabilities	0	0	0
16.5 Dividends to stockholders	0	0	0
16.6 Other cash provided (applied)	173,631,974	(16,636,758)	(152,644,039)
17. Net cash from financing and miscellaneous sources (Line 16.1 through Line 16.4 minus Line 16.5 plus Line 16.6)	173,631,974	(16,636,758)	(152,644,039)
RECONCILIATION OF CASH, CASH EQUIVALENTS AND SHORT-TERM INVESTMENTS			
18. Net change in cash, cash equivalents and short-term investments (Line 11, plus Lines 15 and 17)	60,666,212	12,054,960	(154,145,854)
19. Cash, cash equivalents and short-term investments:			
19.1 Beginning of year	21,915,926	176,061,780	176,061,780
19.2 End of period (Line 18 plus Line 19.1)	82,582,138	188,116,740	21,915,926

Note: Supplemental disclosures of cash flow information for non-cash transactions:

STATEMENT AS OF SEPTEMBER 30, 2024 OF THE Aetna Better Health of Michigan Inc.

EXHIBIT OF PREMIUMS, ENROLLMENT AND UTILIZATION

	1 Total	Comprehensive (Hospital & Medical)		4 Medicare Supplement	5 Vision Only	6 Dental Only	7 Federal Employees Health Benefits Plan	8 Title XVIII Medicare	9 Title XIX Medicaid	10 Credit A&H	11 Disability Income	12 Long-Term Care	13 Other Health	14 Other Non-Health
		2 Individual	3 Group											
Total Members at end of:														
1. Prior Year	66,951	0	0	0	0	0	0	21,258	45,693	0	0	0	0	0
2. First Quarter	66,235	0	0	0	0	0	0	22,931	43,304	0	0	0	0	0
3. Second Quarter	62,746	0	0	0	0	0	0	23,459	39,287	0	0	0	0	0
4. Third Quarter	61,899	0	0	0	0	0	0	22,896	39,003	0	0	0	0	0
5. Current Year	0	0	0	0	0	0	0	0	0	0	0	0	0	0
6. Current Year Member Months	581,256	0	0	0	0	0	0	209,553	371,703	0	0	0	0	0
Total Member Ambulatory Encounters for Period:														
7. Physician	734,353	0	0	0	0	0	0	571,002	163,351	0	0	0	0	0
8. Non-Physician	704,122	0	0	0	0	0	0	552,105	152,017	0	0	0	0	0
9. Total	1,438,475	0	0	0	0	0	0	1,123,107	315,368	0	0	0	0	0
10. Hospital Patient Days Incurred	58,473	0	0	0	0	0	0	44,051	14,422	0	0	0	0	0
11. Number of Inpatient Admissions	7,246	0	0	0	0	0	0	4,806	2,440	0	0	0	0	0
12. Health Premiums Written (a)	462,647,781	0	0	0	0	0	0	309,167,462	153,480,319	0	0	0	0	0
13. Life Premiums Direct	0	0	0	0	0	0	0	0	0	0	0	0	0	0
14. Property/Casualty Premiums Written	0	0	0	0	0	0	0	0	0	0	0	0	0	0
15. Health Premiums Earned.....	462,647,781	0	0	0	0	0	0	309,167,462	153,480,319	0	0	0	0	0
16. Property/Casualty Premiums Earned	0	0	0	0	0	0	0	0	0	0	0	0	0	0
17. Amount Paid for Provision of Health Care Services.....	385,170,192	0	0	0	0	0	0	269,889,937	115,280,255	0	0	0	0	0
18. Amount Incurred for Provision of Health Care Services	397,988,884	0	0	0	0	0	0	275,579,546	122,409,338	0	0	0	0	0

(a) For health premiums written: amount of Medicare Title XVIII exempt from state taxes or fees \$ 309,167,462

UNDERWRITING AND INVESTMENT EXHIBIT

ANALYSIS OF CLAIMS UNPAID - PRIOR YEAR - NET OF REINSURANCE

Line of Business	Claims Paid Year to Date		Liability End of Current Quarter		5 Claims Incurred in Prior Years (Columns 1 + 3)	6 Estimated Claim Reserve and Claim Liability December 31 of Prior Year
	1 On Claims Incurred Prior to January 1 of Current Year	2 On Claims Incurred During the Year	3 On Claims Unpaid Dec. 31 of Prior Year	4 On Claims Incurred During the Year		
1. Comprehensive (hospital and medical) individual	0	0	0	0	0	0
2. Comprehensive (hospital and medical) group	0	0	0	0	0	0
3. Medicare Supplement	0	0	0	0	0	0
4. Vision only	0	0	0	0	0	0
5. Dental only	0	0	0	0	0	0
6. Federal Employees Health Benefits Plan	0	0	0	0	0	0
7. Title XVIII - Medicare	39,711,347	226,918,641	7,885,229	51,353,350	47,596,576	53,724,045
8. Title XIX - Medicaid	17,211,615	95,063,698	3,087,280	28,789,562	20,298,895	24,126,556
9. Credit A&H	0	0	0	0	0	0
10. Disability Income	0	0	0	0	0	0
11. Long-term care	0	0	0	0	0	0
12. Other health	0	0	0	0	0	0
13. Health subtotal (Lines 1 to 12)	56,922,962	321,982,339	10,972,509	80,142,912	67,895,471	77,850,601
14. Health care receivables (a)	0	9,411,376	0	0	0	10,017,734
15. Other non-health	0	0	0	0	0	0
16. Medical incentive pools and bonus amounts	3,338,583	1,608,189	577,831	2,105,380	3,916,414	3,757,837
17. Totals (Lines 13 - 14 + 15 + 16)	60,261,545	314,179,152	11,550,340	82,248,292	71,811,885	71,590,704

(a) Excludes \$ 0 loans or advances to providers not yet expensed.

NOTES TO FINANCIAL STATEMENTS

1. Summary of Significant Accounting Policies and Going Concern

A. Accounting Practices

The accompanying statutory financial statements of Aetna Better Health of Michigan, Inc. ("the Company"), indirectly a wholly-owned subsidiary of CVS Health Corporation ("CVS Health"), have been prepared in conformity with accounting practices prescribed or permitted by the Department of Insurance and Financial Services ("Michigan Department") ("Michigan Accounting Practices"). The Michigan Department recognizes only statutory accounting practices prescribed or permitted by the State of Michigan for determining and reporting the financial condition and results of operations of an insurance company, which include accounting practices and procedures adopted by the National Association of Insurance Commissioners' ("NAIC") *Accounting Practices and Procedures Manual* ("NAIC SAP").

A reconciliation of the Company's net income and surplus between NAIC SAP and practices prescribed and permitted by the State of Michigan for the periods ended September 30, 2024 and December 31, 2023 is as follows:

	SSAP #	F/S Page	F/S Line #	2024	2023
NET INCOME					
(1) Aetna Better Health of Michigan, Inc. State Basis (Page 4, Line 32, Columns 2 & 4)	XXX	XXX	XXX	\$ (18,730,341)	\$ 18,807,067
(2) State Prescribed Practices that are an increase/(decrease) from NAIC SAP:					
(3) State Permitted Practices that are an increase/(decrease) from NAIC SAP:					
(4) Net Income NAIC SAP (1-2-3=4)	XXX	XXX	XXX	\$ (18,730,341)	\$ 18,807,067
SURPLUS					
(5) Aetna Better Health of Michigan, Inc. State Basis (Page 3, Line 33, Columns 3 & 4)	XXX	XXX	XXX	\$ 68,367,377	\$ 86,815,593
(6) State Prescribed Practices that are an increase/(decrease) from NAIC SAP:					
(7) State Permitted Practices that are an increase/(decrease) from NAIC SAP:					
(8) Statutory Surplus NAIC SAP (5-6-7=8)	XXX	XXX	XXX	\$ 68,367,377	\$ 86,815,593

B. Use of Estimates in the Preparation of the Financial Statements

The preparation of these financial statements in conformity with Michigan Accounting Practices requires management to make estimates and assumptions that affect the reported amounts of assets and liabilities and revenues and expenses. Actual results could differ from those estimates.

C. Accounting Policies

The Company applies the following significant accounting policies:

(1) No significant change.

(2) Bonds

Bonds, which include special deposits, are carried at amortized cost except for those bonds with an NAIC designation of 3 through 6, which are carried at the lower of amortized cost or fair value. The amount carried at fair value is not material to the financial statements. Bond premiums and discounts are amortized using the scientific interest method. When quoted prices in active markets for identical assets are available, the Company uses these quoted market prices to determine the fair value of bonds. This is used primarily for U.S. government securities. In other cases where a quoted market price for identical assets in an active market is either not available or not observable, the Company estimates fair values using valuation methodologies based on available and observable market information or by using a matrix pricing model. If quoted market prices are not available, the Company determines fair value using broker quotes or an internal analysis of each investment's financial performance and cash flow projections. The Company had no investments where fair value was determined using broker quotes or an internal analysis of financial performance and cash flow projections at September 30, 2024. Bonds include all investments whose maturity is greater than one year when purchased. All adjustments between amortized cost and carrying value are reflected in unrealized capital gains and losses and are reported as direct adjustments to surplus.

Bonds are recorded as purchases or sales on the trade date.

The Company periodically reviews its bonds to determine whether a decline in fair value below the carrying value is other-than-temporary. For bonds, other than loan-backed and structured securities ("LB&SS") discussed in Note 1C. (6) below, an

NOTES TO FINANCIAL STATEMENTS

other-than-temporary impairment (“OTTI”) shall be recorded if it is probable that the Company will be unable to collect all amounts due according to the contractual terms in effect at the date of acquisition. Declines deemed to be OTTI in the cost basis are recognized as realized capital losses. Yield-related impairments are deemed other-than-temporary when the Company intends to sell an investment at the reporting date before recovery of the cost of the investment.

The Company analyzes all relevant facts and circumstances for each investment when performing its analysis to determine whether an OTTI exists. Among the factors considered in evaluating whether a decline is other-than-temporary, management considers whether the decline in fair value results from a change in the quality of the investment security itself, whether the decline results from a downward movement in the market as a whole, the prospects for realizing the carrying value of the bond based on the investee’s current and short-term prospects for recovery and other factors. The risks inherent in assessing the impairment of an investment include the risk that market factors may differ from the Company’s expectations and the risk that facts and circumstances factored into its assessment may change with the passage of time. Unexpected changes to market factors and circumstances that were not present in past reporting periods may result in a current period decision to sell securities that were not other-than-temporarily-impaired in prior reporting periods.

The Company had no Securities Valuation Office-identified investments that are being reported at a different measurement method from the prior year annual statement.

(3) through (4): No significant change.

(5) Mortgage Loans

Mortgage loans on real estate (“Mortgage Loans”) are carried at unpaid principal balances, adjusted for accrual of discounts and amortization of premiums. Mortgage loans funding and repayments are recorded on the closing date. Fair values are estimated by discounting expected mortgage loan cash flows at market rates that reflect the rates at which similar loans would be made to similar borrowers. These rates reflect management’s assessment of the credit quality and the remaining duration of the loans. The fair value estimates of mortgage loans of lower credit quality, including problem and restructured loans, are based on the estimated fair value of the underlying collateral. Payment receipts on impaired loans are recorded on the cash basis. The Company recognizes interest income on impaired loans when received. The Company considers a loan impaired when it is probable that the loan will be uncollectible based on its contractual terms. The Company measures the impairment based on the fair value of the collateral less estimated costs to obtain and sell. The difference between the net value of the collateral and the recorded investment in the mortgage loan is recorded as a valuation allowance with a corresponding charge to unrealized loss. If the impairment is deemed other-than-temporary, a write-down is recognized as a realized loss, and a new cost basis is established. This new cost basis is not changed for subsequent recoveries in value. Mortgage loans for which foreclosure is probable are considered permanently impaired.

(6) Loan-Backed and Structured Securities

LB&SS are carried at amortized cost adjusted for unamortized premiums and discounts and are accounted for using the retrospective adjustment method. Premiums and discounts on loan-backed and structured securities are amortized using the scientific method over the estimated remaining term of the securities, adjusted for anticipated prepayments.

For LB&SS, the Company records OTTI when the fair value of the loan-backed or structured security is less than the amortized cost basis at the balance sheet date and (1) the Company intends to sell the investment, or (2) the Company does not have the intent and ability to retain the investment for the time sufficient to recover the amortized cost basis, or (3) the Company does not expect to recover the entire amortized cost basis of the security, even if it does not intend to sell the security and has the intent and ability to hold. If it is determined an OTTI has occurred because of (1) or (2), the amount of the OTTI is equal to the difference between the amortized cost and the fair value of the security at the Balance Sheet date and this difference is recorded as a realized capital loss. If it is determined an OTTI has occurred because of (3), the amount of the OTTI is equal to the difference between the amortized cost and the present value of cash flows expected to be collected, discounted at the loan-backed or structured security’s effective interest rate and this difference is also accounted for as a realized capital loss.

(7) through (19): No significant change.

D. Going Concern

As of November 12, 2024, management evaluated whether there are conditions or events, considered in the aggregate, that raise substantial doubt about the Company’s ability to continue as a going concern and management has determined that it is not probable that the Company will be unable to meet its obligations as they become due within one year after the financial statements are available to be issued. Management will continuously evaluate the Company’s ability to continue as a going concern and will take appropriate action and will make appropriate disclosures if there is any change in any condition or events that would raise substantial doubt about the Company’s ability to continue as a going concern.

2. Accounting Changes and Corrections of Errors

The Company did not have any accounting changes or corrections of errors in the period ended September 30, 2024.

3. Business Combinations and Goodwill

No significant change.

4. Discontinued Operations

NOTES TO FINANCIAL STATEMENTS

No significant change.

5. Investments

A. through C.: No significant change.

D. Loan-Backed Securities

- (1) Prepayment assumptions for single class and multi-class mortgage-backed/loan-backed securities were obtained from industry market sources.
- (2) The Company did not recognize any OTTI on loan-backed and structured securities in which the Company had the (1) intent to sell, (2) did not have the intent and ability to retain for a period of time sufficient to recover the amortized cost basis or (3) present value of cash flows expected to be collected is less than the amortized cost basis of the securities in accordance with Statements of Statutory Accounting Principles ("SSAP") No. 43R, Loan-Backed and Structured Securities ("SSAP No. 43R") at September 30, 2024.
- (3) The Company had no recognized OTTI on loan-backed and structured securities currently held, in which the present value of cash flows expected to be collected is less than the amortized cost basis at the reporting date September 30, 2024.
- (4) The Company had no unrealized loss position on loan-backed and structured securities held by the Company at September 30, 2024.
- (5) Not applicable.

E. Dollar Repurchase Agreements and/or Securities Lending Transactions

- (1) and (2): No significant change.
 - (3) Neither the Company nor its agent has accepted collateral that is permitted by contract or custom to sell or repledge as of September 30, 2024.
 - (4) through (7): No significant change.
- F. The Company did not have any repurchase agreements transactions accounted for as secured borrowing at September 30, 2024.
- G. The Company did not have any reverse repurchase agreements transactions accounted for as secured borrowing at September 30, 2024.
- H. The Company did not have any repurchase agreements transactions accounted for as a sale at September 30, 2024.
- I. The Company did not have any reverse repurchase agreements transactions accounted for as a sale at September 30, 2024.
- J. through L.: No significant change.
- M. The Company did not have any working capital finance investments at September 30, 2024.
- N. The Company did not have any offsetting and netting of derivative, repurchase and reverse repurchase, and securities borrowing and securities lending assets or liabilities at September 30, 2024.
- O. through Q.: No significant change.
- R. The Company did not participate in any Qualified Cash Pools at September 30, 2024.

6. Joint Ventures, Partnerships and Limited Liability Companies

No significant change.

7. Investment Income

No significant change.

8. Derivative Instruments

The Company did not have any derivative instruments at September 30, 2024.

9. Income Taxes

No significant change.

NOTES TO FINANCIAL STATEMENTS

10. Information Concerning Parent, Subsidiaries, Affiliates and Other Related Parties

No significant change.

11. Debt

A. The Company did not have any items related to debt, including capital notes at September 30, 2024.

B. The Company did not have any Federal Home Loan Bank agreements at September 30, 2024.

12. Retirement Plans, Deferred Compensation, Postemployment Benefits and Compensated Absences and Other Postretirement Benefit Plans

The Company did not have a retirement plan, deferred compensation plan or other postretirement benefit plan at September 30, 2024.

13. Capital and Surplus, Shareholders' Dividend Restrictions and Quasi-Reorganizations

No significant change.

14. Liabilities, Contingencies and Assessments

A. No significant change.

B. Assessments

Insurance Provider Assessment

Effective October 1, 2018 the Company is required to pay the annual Insurance Provider Assessment ("IPA"). The assessment for each HMO is based on the amount determined by the Michigan Department of Health and Human Services ("MDHHS") and applied to the prior year member months for the Medicaid and commercial lines of business. The portion of the assessment attributable to the Medicaid program is fully reimbursed by MDHHS. The Company recognized \$27,273,537 of net premium income and \$27,273,537 as general administrative expenses as of September 30, 2024 related to the IPA. The Company has \$8,352,605 as an aggregate write-in for other than invested assets and \$8,352,605 recorded as general expenses due and accrued on the Statutory Statements of Assets, Liabilities and Capital Surplus at September 30, 2024 related to the payments and reimbursements for the 2024 assessment, effective July 2024.

C through F: No significant change.

15. Leases

No significant change.

16. Information About Financial Instruments with Off-Balance Sheet Risk and Financial Instruments with Concentrations of Credit Risk

No significant change.

17. Sale, Transfer and Servicing of Financial Assets and Extinguishments of Liabilities

A. Transfers of Receivables Reported as Sales

No significant change.

B. Transfer and Servicing of Financial Assets

(1) No significant change.

(2) and (3): The Company did not have any servicing assets or liabilities at September 30, 2024.

(4) The Company did not have any securitized financial assets at September 30, 2024.

(5) through (7): No significant change.

C. Wash Sales

(1) In the course of the Company's asset management, securities are sold and reacquired within 30 days of the sale date to enhance the Company's yield on its investment portfolio.

(2) The Company had no securities sold during the quarter ended September 30, 2024 and reacquired within 30 days of the sale date.

18. Gain or Loss to the Reporting Entity from Uninsured Plans and the Uninsured Portion of Partially Insured Plans

NOTES TO FINANCIAL STATEMENTS

- A. ASO Plans - As of September 30, 2024, the Company has received payments totaling \$120,093,239 and paid a total of \$120,093,239 to the hospitals on behalf of the MDHHS for managed care Medicaid pass-through graduate medical education, hospital reimbursement adjustments, specialty network access and patient centered medical home administration programs, and Quality Assurance (QAS) payments for nursing facilities.

	(1) ASO Uninsured Plans	(2) Uninsured Portion of Partially Insured Plans	(3) Total ASO
a. Net reimbursement for administrative expenses (including administrative fees) in excess of actual expenses	\$ —	\$ —	\$ —
b. Total net other income or expenses (including interest paid to or received from plans)	—	—	—
c. Net gain or (loss) from operations	—	—	—
d. Total claim payment volume	\$ 120,093,239	\$ —	\$ 120,093,239

B and C: No significant change.

19. Direct Premium Written/Produced by Managing General Agents/Third Party Administrators

No significant change.

20. Fair Value Measurements

A.

- (1) The Company had no material assets and liabilities that are measured and reported at fair value in the financial statements as of September 30, 2024.
- (2) There were no material realized and unrealized capital gains, purchases, sales, settlements, or transfers into or out of the Company's Level 3 financial assets during 2024.
- (3) Transfers in and out of all levels are recognized at the end of the reporting period of which the transfer occurred.
- (4) The Company's fair value measurement valuation techniques are described in B. below.
- (5) The Company did not have any derivative instruments at September 30, 2024.

- B. The fair values of these instruments are based on valuations that include inputs that can be classified within one of three levels of a hierarchy. The following are the levels of the hierarchy and a brief description of the type of valuation information ("inputs") that qualifies a financial asset or liability for each level:

Level 1 - Unadjusted quoted prices for identical assets or liabilities in active markets.

Level 2 - Inputs other than Level 1 that are based on observable market data. These include: quoted prices for similar assets in active markets, quoted prices for identical assets in inactive markets, inputs that are observable that are not prices (such as interest rates and credit risks) and inputs that are derived from or corroborated by observable markets.

Level 3 - Developed from unobservable data, reflecting the Company's own assumptions.

Financial assets and liabilities are classified based upon the lowest level of input that is significant to the valuation. When quoted prices in active markets for identical assets and liabilities are available, the Company uses these quoted market prices to determine the fair value of financial assets and liabilities and classifies these assets and liabilities as Level 1. In other cases where a quoted market price for identical assets and liabilities in an active market is either not available or not observable, the Company estimates fair value using valuation methodologies based on available and observable market information or by using a matrix pricing model. These financial assets and liabilities would then be classified as Level 2. If quoted market prices are not available, the Company determines fair value using broker quotes or an internal analysis of each investment's financial performance and cash flow projections. Thus, financial assets and liabilities may be classified in Level 3 even though there may be some significant inputs that may be observable.

- C. The carrying values and estimated fair values of the Company's financial instruments at September 30, 2024 were as follows:

Type of Financial Instrument	Aggregate Fair Value	Admitted Assets	(Level 1)	(Level 2)	(Level 3)	Net Asset Value (NAV)	Not Practicable (Carrying Value)
Bonds, short-term investments, and cash equivalents	\$213,691,021	\$211,185,075	\$ 6,934,531	\$206,756,490	\$ —	\$ —	\$ —
Mortgage loans	\$ 2,945,179	\$ 2,881,250	\$ —	\$ —	\$ 2,945,179	\$ —	\$ —

In evaluating the Company's management of interest rate and liquidity risk and currency exposures, the fair values of all assets and liabilities should be taken into consideration, not only those presented above.

NOTES TO FINANCIAL STATEMENTS

D. The Company did not have any financial instruments where it was not practicable to estimate the fair value.

E. The Company has not elected to use the net asset value practical expedient to fair value to measure its investments.

21. Other Items

A. and B.: No significant change.

C. Other Disclosures

Pursuant to State of Michigan statute, there are standards, either singly or a combination of two or more, that if companies do not adhere to they can be considered by Michigan Department to be hazardous to policyholders, creditors or the public in general ("hazardous condition"). At September 30, 2024, the Company did not meet all the standards necessary to not be considered in hazardous condition due to net losses which were driven by Q3 2024 Premium Deficiency Reserve causing test failure. Capital management will continue to closely monitor the results and take necessary capital actions if required.

D. through I.: No significant change.

22. Events Subsequent

A. Type I - Recognized Subsequent Events

Subsequent events have been considered through November 12, 2024 for the statutory statement issued on November 12, 2024.

The Company had no known reportable recognized subsequent events.

B. Type II - Non-Recognized Subsequent Events

Subsequent events have been considered through November 12, 2024 for the statutory statement issued on November 12, 2024.

The Company had no known reportable non-recognized subsequent events.

23. Reinsurance

No significant change.

24. Retrospectively Rated Contracts and Contracts Subject to Redetermination

A. through D.: No significant change.

E. Risk Sharing Provisions of the Affordable Care Act

(1) Did the reporting entity write accident and health insurance premium which is subject to the ACA risk sharing provisions (YES/NO)? Yes [] No [X]

(2) through (5): Not applicable.

25. Change in Incurred Claims and Claim Adjustment Expenses

A. Reserves as of December 31, 2023 were \$83,347,999. As of September 30, 2024, \$62,001,106 has been paid for incurred claims and claim adjustment expenses attributable to insured events of prior years. Reserves remaining for prior years are now \$11,550,340 as a result of re-estimation of unpaid claims and claim adjustment expenses. Therefore, there has been a \$9,796,553 favorable prior-year development since December 31, 2023 to September 30, 2024. The decrease is generally the result of ongoing analysis of recent loss development trends. Original estimates are increased or decreased, as additional information becomes known regarding individual claims. Included in this decrease, the Company experienced \$6,686,718 of favorable prior year claim development on retrospectively rated policies. However, the business to which it relates is subject to premium adjustments.

B. There has been no significant change in the Company's methodologies and assumptions used in calculating the liability for unpaid losses and loss adjustment expenses.

26. Intercompany Pooling Arrangements

No significant change.

27. Structured Settlements

No significant change.

28. Health Care Receivables

NOTES TO FINANCIAL STATEMENTS

No significant change.

29. Participating Policies

No significant change.

30. Premium Deficiency Reserves

	<u>September 30, 2024</u>
1. Liability carried for premium deficiency reserves ("PDR")	\$20,813,745
2. Date of the most recent evaluation of this liability	9/30/2024
3. Was anticipated investment income utilized in the calculation?	No

The Company recorded PDR of \$15,091,308 and \$5,722,437 related to its Medicaid and Medicare businesses.

31. Anticipated Salvage and Subrogation

No significant change.

GENERAL INTERROGATORIES

PART 1 - COMMON INTERROGATORIES

GENERAL

- 1.1 Did the reporting entity experience any material transactions requiring the filing of Disclosure of Material Transactions with the State of Domicile, as required by the Model Act? Yes [] No [X]
- 1.2 If yes, has the report been filed with the domiciliary state? Yes [] No []
- 2.1 Has any change been made during the year of this statement in the charter, by-laws, articles of incorporation, or deed of settlement of the reporting entity? Yes [] No [X]
- 2.2 If yes, date of change: _____
- 3.1 Is the reporting entity a member of an Insurance Holding Company System consisting of two or more affiliated persons, one or more of which is an insurer? Yes [X] No []
If yes, complete Schedule Y, Parts 1 and 1A.
- 3.2 Have there been any substantial changes in the organizational chart since the prior quarter end? Yes [X] No []
- 3.3 If the response to 3.2 is yes, provide a brief description of those changes.
Effective July 1, 2024, Texas Health + Aetna Health Insurance Holding Company LLC was dissolved. PT Aetna Management Consulting was formally liquidated on July 10, 2024. Effective July 23, 2024, Aetna International EX Pat LLC, the Delaware cancellation was completed. Effective August 19, 2024, Aetna Global Benefits (Middle East) LLC became a wholly-owned subsidiary of Aetna International LLC. Effective August 28, 2024, Aetna Equity Fund LLC, a Delaware limited liability company was formed. Effective August 30, 2024, Aetna Insurance (Hong Kong) Limited changed its name to AIHK Limited.
- 3.4 Is the reporting entity publicly traded or a member of a publicly traded group? Yes [X] No []
- 3.5 If the response to 3.4 is yes, provide the CIK (Central Index Key) code issued by the SEC for the entity/group. 0000064803
- 4.1 Has the reporting entity been a party to a merger or consolidation during the period covered by this statement? Yes [] No [X]
- 4.2 If yes, provide the name of the entity, NAIC Company Code, and state of domicile (use two letter state abbreviation) for any entity that has ceased to exist as a result of the merger or consolidation.

1 Name of Entity	2 NAIC Company Code	3 State of Domicile
.....

5. If the reporting entity is subject to a management agreement, including third-party administrator(s), managing general agent(s), attorney-in-fact, or similar agreement, have there been any significant changes regarding the terms of the agreement or principals involved? Yes [] No [X] N/A []
If yes, attach an explanation.
.....
- 6.1 State as of what date the latest financial examination of the reporting entity was made or is being made. 12/31/2020
- 6.2 State the as of date that the latest financial examination report became available from either the state of domicile or the reporting entity. This date should be the date of the examined balance sheet and not the date the report was completed or released. 12/31/2020
- 6.3 State as of what date the latest financial examination report became available to other states or the public from either the state of domicile or the reporting entity. This is the release date or completion date of the examination report and not the date of the examination (balance sheet date). 05/23/2022
- 6.4 By what department or departments?
Michigan Department of Insurance and Financial Services
- 6.5 Have all financial statement adjustments within the latest financial examination report been accounted for in a subsequent financial statement filed with Departments? Yes [] No [] N/A [X]
- 6.6 Have all of the recommendations within the latest financial examination report been complied with? Yes [X] No [] N/A []
- 7.1 Has this reporting entity had any Certificates of Authority, licenses or registrations (including corporate registration, if applicable) suspended or revoked by any governmental entity during the reporting period? Yes [] No [X]
- 7.2 If yes, give full information:
.....
- 8.1 Is the company a subsidiary of a bank holding company regulated by the Federal Reserve Board? Yes [] No [X]
- 8.2 If response to 8.1 is yes, please identify the name of the bank holding company.
.....
- 8.3 Is the company affiliated with one or more banks, thrifts or securities firms? Yes [] No [X]
- 8.4 If response to 8.3 is yes, please provide below the names and location (city and state of the main office) of any affiliates regulated by a federal regulatory services agency [i.e. the Federal Reserve Board (FRB), the Office of the Comptroller of the Currency (OCC), the Federal Deposit Insurance Corporation (FDIC) and the Securities Exchange Commission (SEC)] and identify the affiliate's primary federal regulator.

1 Affiliate Name	2 Location (City, State)	3 FRB	4 OCC	5 FDIC	6 SEC
.....

GENERAL INTERROGATORIES

- 9.1 Are the senior officers (principal executive officer, principal financial officer, principal accounting officer or controller, or persons performing similar functions) of the reporting entity subject to a code of ethics, which includes the following standards? Yes No
 - (a) Honest and ethical conduct, including the ethical handling of actual or apparent conflicts of interest between personal and professional relationships;
 - (b) Full, fair, accurate, timely and understandable disclosure in the periodic reports required to be filed by the reporting entity;
 - (c) Compliance with applicable governmental laws, rules and regulations;
 - (d) The prompt internal reporting of violations to an appropriate person or persons identified in the code; and
 - (e) Accountability for adherence to the code.
- 9.11 If the response to 9.1 is No, please explain:
- 9.2 Has the code of ethics for senior managers been amended? Yes No
- 9.21 If the response to 9.2 is Yes, provide information related to amendment(s).
In the first quarter of 2024, the Code of Conduct was amended. Added "Responsible Use of Technology" as a new section and made minor updates to the "Non-discrimination, harassment, retaliation" section.
- 9.3 Have any provisions of the code of ethics been waived for any of the specified officers? Yes No
- 9.31 If the response to 9.3 is Yes, provide the nature of any waiver(s).
.....

FINANCIAL

- 10.1 Does the reporting entity report any amounts due from parent, subsidiaries or affiliates on Page 2 of this statement? Yes No
- 10.2 If yes, indicate any amounts receivable from parent included in the Page 2 amount: \$ 0

INVESTMENT

- 11.1 Were any of the stocks, bonds, or other assets of the reporting entity loaned, placed under option agreement, or otherwise made available for use by another person? (Exclude securities under securities lending agreements.) Yes No
 - 11.2 If yes, give full and complete information relating thereto:
 - 12. Amount of real estate and mortgages held in other invested assets in Schedule BA: \$ 0
 - 13. Amount of real estate and mortgages held in short-term investments: \$ 0
 - 14.1 Does the reporting entity have any investments in parent, subsidiaries and affiliates? Yes No
 - 14.2 If yes, please complete the following:
- | | 1 | 2 |
|---|---|--|
| | Prior Year-End
Book/Adjusted
Carrying Value | Current Quarter
Book/Adjusted
Carrying Value |
| 14.21 Bonds | \$ 0 | \$ 0 |
| 14.22 Preferred Stock | \$ 0 | \$ 0 |
| 14.23 Common Stock | \$ 0 | \$ 0 |
| 14.24 Short-Term Investments | \$ 0 | \$ 0 |
| 14.25 Mortgage Loans on Real Estate | \$ 0 | \$ 0 |
| 14.26 All Other | \$ 0 | \$ 0 |
| 14.27 Total Investment in Parent, Subsidiaries and Affiliates (Subtotal Lines 14.21 to 14.26) | \$ 0 | \$ 0 |
| 14.28 Total Investment in Parent included in Lines 14.21 to 14.26 above | \$ 0 | \$ 0 |
- 15.1 Has the reporting entity entered into any hedging transactions reported on Schedule DB? Yes No
 - 15.2 If yes, has a comprehensive description of the hedging program been made available to the domiciliary state? Yes No N/A
 - If no, attach a description with this statement.
 - 16. For the reporting entity's security lending program, state the amount of the following as of the current statement date:
 - 16.1 Total fair value of reinvested collateral assets reported on Schedule DL, Parts 1 and 2. \$ 0
 - 16.2 Total book/adjusted carrying value of reinvested collateral assets reported on Schedule DL, Parts 1 and 2 \$ 0
 - 16.3 Total payable for securities lending reported on the liability page. \$ 0

GENERAL INTERROGATORIES

17. Excluding items in Schedule E - Part 3 - Special Deposits, real estate, mortgage loans and investments held physically in the reporting entity's offices, vaults or safety deposit boxes, were all stocks, bonds and other securities, owned throughout the current year held pursuant to a custodial agreement with a qualified bank or trust company in accordance with Section 1, III - General Examination Considerations, F. Outsourcing of Critical Functions, Custodial or Safekeeping Agreements of the NAIC Financial Condition Examiners Handbook? Yes [X] No []
- 17.1 For all agreements that comply with the requirements of the NAIC Financial Condition Examiners Handbook, complete the following:

1 Name of Custodian(s)	2 Custodian Address
State Street Bank and Trust Company	State Street Financial Center; One Lincoln Street; Boston, MA 02111-2900

- 17.2 For all agreements that do not comply with the requirements of the NAIC Financial Condition Examiners Handbook, provide the name, location and a complete explanation:

1 Name(s)	2 Location(s)	3 Complete Explanation(s)
.....

- 17.3 Have there been any changes, including name changes, in the custodian(s) identified in 17.1 during the current quarter? Yes [] No [X]

- 17.4 If yes, give full information relating thereto:

1 Old Custodian	2 New Custodian	3 Date of Change	4 Reason
.....

- 17.5 Investment management – Identify all investment advisors, investment managers, broker/dealers, including individuals that have the authority to make investment decisions on behalf of the reporting entity. For assets that are managed internally by employees of the reporting entity, note as such. ["...that have access to the investment accounts"; "...handle securities"]

1 Name of Firm or Individual	2 Affiliation
Derek S. Blunt as Senior Investment Officer	A.....

- 17.5097 For those firms/individuals listed in the table for Question 17.5, do any firms/individuals unaffiliated with the reporting entity (i.e. designated with a "U") manage more than 10% of the reporting entity's invested assets?..... Yes [] No [X]

- 17.5098 For firms/individuals unaffiliated with the reporting entity (i.e. designated with a "U") listed in the table for Question 17.5, does the total assets under management aggregate to more than 50% of the reporting entity's invested assets?..... Yes [] No [X]

- 17.6 For those firms or individuals listed in the table for 17.5 with an affiliation code of "A" (affiliated) or "U" (unaffiliated), provide the information for the table below.

1	2	3	4	5
Central Registration Depository Number	Name of Firm or Individual	Legal Entity Identifier (LEI)	Registered With	Investment Management Agreement (IMA) Filed
N/A	Derek S. Blunt	N/A	Not registered	NO.....

- 18.1 Have all the filing requirements of the Purposes and Procedures Manual of the NAIC Investment Analysis Office been followed? Yes [X] No []

- 18.2 If no, list exceptions:
.....

19. By self-designating 5GI securities, the reporting entity is certifying the following elements for each self-designated 5GI security:

- a. Documentation necessary to permit a full credit analysis of the security does not exist or an NAIC CRP credit rating for an FE or PL security is not available.
- b. Issuer or obligor is current on all contracted interest and principal payments.
- c. The insurer has an actual expectation of ultimate payment of all contracted interest and principal.

- Has the reporting entity self-designated 5GI securities? Yes [] No [X]

20. By self-designating PLGI securities, the reporting entity is certifying the following elements of each self-designated PLGI security:

- a. The security was purchased prior to January 1, 2018.
- b. The reporting entity is holding capital commensurate with the NAIC Designation reported for the security.
- c. The NAIC Designation was derived from the credit rating assigned by an NAIC CRP in its legal capacity as a NRSRO which is shown on a current private letter rating held by the insurer and available for examination by state insurance regulators.
- d. The reporting entity is not permitted to share this credit rating of the PL security with the SVO.

- Has the reporting entity self-designated PLGI securities? Yes [] No [X]

21. By assigning FE to a Schedule BA non-registered private fund, the reporting entity is certifying the following elements of each self-designated FE fund:

- a. The shares were purchased prior to January 1, 2019.
- b. The reporting entity is holding capital commensurate with the NAIC Designation reported for the security.
- c. The security had a public credit rating(s) with annual surveillance assigned by an NAIC CRP in its legal capacity as an NRSRO prior to January 1, 2019.
- d. The fund only or predominantly holds bonds in its portfolio.
- e. The current reported NAIC Designation was derived from the public credit rating(s) with annual surveillance assigned by an NAIC CRP in its legal capacity as an NRSRO.
- f. The public credit rating(s) with annual surveillance assigned by an NAIC CRP has not lapsed.

- Has the reporting entity assigned FE to Schedule BA non-registered private funds that complied with the above criteria? Yes [] No [X]

GENERAL INTERROGATORIES

PART 2 - HEALTH

- 1. Operating Percentages:
 - 1.1 A&H loss percent94.7 %
 - 1.2 A&H cost containment percent 4.2 %
 - 1.3 A&H expense percent excluding cost containment expenses 12.3 %

- 2.1 Do you act as a custodian for health savings accounts? Yes [] No [X]
- 2.2 If yes, please provide the amount of custodial funds held as of the reporting date \$..... 0
- 2.3 Do you act as an administrator for health savings accounts? Yes [] No [X]
- 2.4 If yes, please provide the balance of the funds administered as of the reporting date \$.....0

- 3. Is the reporting entity licensed or chartered, registered, qualified, eligible or writing business in at least two states? Yes [X] No []
- 3.1 If no, does the reporting entity assume reinsurance business that covers risks residing in at least one state other than the state of domicile of the reporting entity? Yes [] No []

SCHEDULE S - CEDED REINSURANCE

Showing All New Reinsurance Treaties - Current Year to Date

1 NAIC Company Code	2 ID Number	3 Effective Date	4 Name of Reinsurer	5 Domiciliary Jurisdiction	6 Type of Reinsurance Ceded	7 Type of Business Ceded	8 Type of Reinsurer	9 Certified Reinsurer Rating (1 through 6)	10 Effective Date of Certified Reinsurer Rating
NONE									

SCHEDULE T - PREMIUMS AND OTHER CONSIDERATIONS

Current Year to Date - Allocated by States and Territories

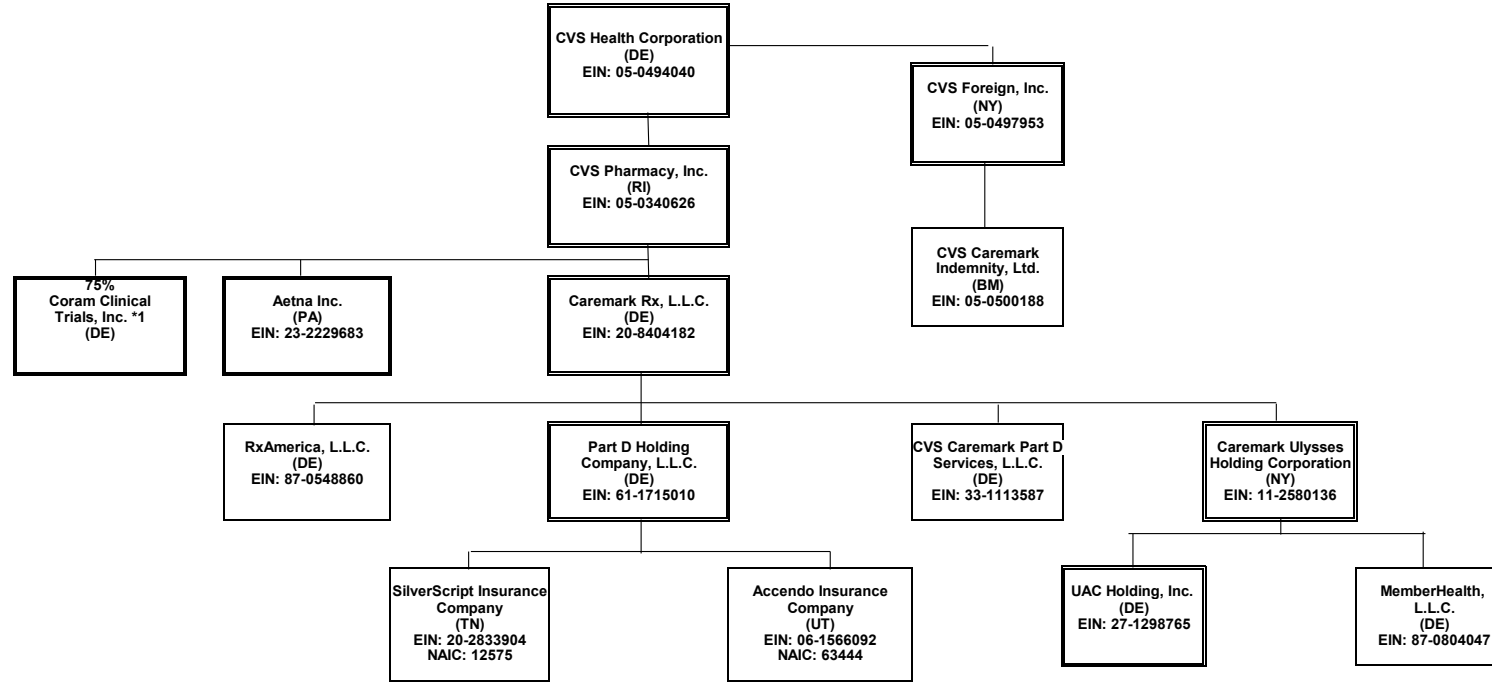
States, etc.	1 Active Status (a)	Direct Business Only									
		2 Accident and Health Premiums	3 Medicare Title XVIII	4 Medicaid Title XIX	5 CHIP Title XXI	6 Federal Employees Health Benefits Program Premiums	7 Life and Annuity Premiums & Other Considerations	8 Property/Casualty Premiums	9 Total Columns 2 Through 8	10 Deposit-Type Contracts	
1. Alabama	AL	.N	.0	.0	.0	.0	.0	.0	.0	.0	.0
2. Alaska	AK	.N	.0	.0	.0	.0	.0	.0	.0	.0	.0
3. Arizona	AZ	.N	.0	.0	.0	.0	.0	.0	.0	.0	.0
4. Arkansas	AR	.N	.0	.0	.0	.0	.0	.0	.0	.0	.0
5. California	CA	.N	.0	.0	.0	.0	.0	.0	.0	.0	.0
6. Colorado	CO	.N	.0	.0	.0	.0	.0	.0	.0	.0	.0
7. Connecticut	CT	.N	.0	.0	.0	.0	.0	.0	.0	.0	.0
8. Delaware	DE	.N	.0	.0	.0	.0	.0	.0	.0	.0	.0
9. District of Columbia	DC	.N	.0	.0	.0	.0	.0	.0	.0	.0	.0
10. Florida	FL	.N	.0	.0	.0	.0	.0	.0	.0	.0	.0
11. Georgia	GA	.N	.0	.0	.0	.0	.0	.0	.0	.0	.0
12. Hawaii	HI	.N	.0	.0	.0	.0	.0	.0	.0	.0	.0
13. Idaho	ID	L	28,053,505	.0	.0	.0	.0	.0	28,053,505	.0	.0
14. Illinois	IL	.N	.0	.0	.0	.0	.0	.0	.0	.0	.0
15. Indiana	IN	.N	.0	.0	.0	.0	.0	.0	.0	.0	.0
16. Iowa	IA	.N	.0	.0	.0	.0	.0	.0	.0	.0	.0
17. Kansas	KS	.N	.0	.0	.0	.0	.0	.0	.0	.0	.0
18. Kentucky	KY	.N	.0	.0	.0	.0	.0	.0	.0	.0	.0
19. Louisiana	LA	.N	.0	.0	.0	.0	.0	.0	.0	.0	.0
20. Maine	ME	.N	.0	.0	.0	.0	.0	.0	.0	.0	.0
21. Maryland	MD	.N	.0	.0	.0	.0	.0	.0	.0	.0	.0
22. Massachusetts	MA	.N	.0	.0	.0	.0	.0	.0	.0	.0	.0
23. Michigan	MI	L	191,185,320	153,463,050	17,269	.0	.0	.0	344,665,639	.0	.0
24. Minnesota	MN	.N	.0	.0	.0	.0	.0	.0	.0	.0	.0
25. Mississippi	MS	.N	.0	.0	.0	.0	.0	.0	.0	.0	.0
26. Missouri	MO	.N	.0	.0	.0	.0	.0	.0	.0	.0	.0
27. Montana	MT	.N	.0	.0	.0	.0	.0	.0	.0	.0	.0
28. Nebraska	NE	.N	.0	.0	.0	.0	.0	.0	.0	.0	.0
29. Nevada	NV	.N	.0	.0	.0	.0	.0	.0	.0	.0	.0
30. New Hampshire	NH	.N	.0	.0	.0	.0	.0	.0	.0	.0	.0
31. New Jersey	NJ	.N	.0	.0	.0	.0	.0	.0	.0	.0	.0
32. New Mexico	NM	.N	.0	.0	.0	.0	.0	.0	.0	.0	.0
33. New York	NY	.N	.0	.0	.0	.0	.0	.0	.0	.0	.0
34. North Carolina	NC	.N	.0	.0	.0	.0	.0	.0	.0	.0	.0
35. North Dakota	ND	.N	.0	.0	.0	.0	.0	.0	.0	.0	.0
36. Ohio	OH	.N	.0	.0	.0	.0	.0	.0	.0	.0	.0
37. Oklahoma	OK	.N	.0	.0	.0	.0	.0	.0	.0	.0	.0
38. Oregon	OR	L	89,928,637	.0	.0	.0	.0	.0	89,928,637	.0	.0
39. Pennsylvania	PA	.N	.0	.0	.0	.0	.0	.0	.0	.0	.0
40. Rhode Island	RI	.N	.0	.0	.0	.0	.0	.0	.0	.0	.0
41. South Carolina	SC	.N	.0	.0	.0	.0	.0	.0	.0	.0	.0
42. South Dakota	SD	.N	.0	.0	.0	.0	.0	.0	.0	.0	.0
43. Tennessee	TN	.N	.0	.0	.0	.0	.0	.0	.0	.0	.0
44. Texas	TX	.N	.0	.0	.0	.0	.0	.0	.0	.0	.0
45. Utah	UT	.N	.0	.0	.0	.0	.0	.0	.0	.0	.0
46. Vermont	VT	.N	.0	.0	.0	.0	.0	.0	.0	.0	.0
47. Virginia	VA	.N	.0	.0	.0	.0	.0	.0	.0	.0	.0
48. Washington	WA	.N	.0	.0	.0	.0	.0	.0	.0	.0	.0
49. West Virginia	WV	.N	.0	.0	.0	.0	.0	.0	.0	.0	.0
50. Wisconsin	WI	.N	.0	.0	.0	.0	.0	.0	.0	.0	.0
51. Wyoming	WY	.N	.0	.0	.0	.0	.0	.0	.0	.0	.0
52. American Samoa	AS	.N	.0	.0	.0	.0	.0	.0	.0	.0	.0
53. Guam	GU	.N	.0	.0	.0	.0	.0	.0	.0	.0	.0
54. Puerto Rico	PR	.N	.0	.0	.0	.0	.0	.0	.0	.0	.0
55. U.S. Virgin Islands	VI	.N	.0	.0	.0	.0	.0	.0	.0	.0	.0
56. Northern Mariana Islands	MP	.N	.0	.0	.0	.0	.0	.0	.0	.0	.0
57. Canada	CAN	.N	.0	.0	.0	.0	.0	.0	.0	.0	.0
58. Aggregate Other Aliens	OT	XXX	.0	.0	.0	.0	.0	.0	.0	.0	.0
59. Subtotal	XXX	.0	309,167,462	153,463,050	17,269	.0	.0	.0	462,647,781	.0	.0
60. Reporting Entity Contributions for Employee Benefit Plans	XXX	.0	.0	.0	.0	.0	.0	.0	.0	.0	.0
61. Totals (Direct Business)	XXX	0	309,167,462	153,463,050	17,269	0	0	0	462,647,781	0	0
DETAILS OF WRITE-INS											
58001.	XXX										
58002.	XXX										
58003.	XXX										
58998. Summary of remaining write-ins for Line 58 from overflow page	XXX	.0	.0	.0	.0	.0	.0	.0	.0	.0	.0
58999. Totals (Lines 58001 through 58003 plus 58998)(Line 58 above)	XXX	0	0	0	0	0	0	0	0	0	0

(a) Active Status Counts:

- 1. L - Licensed or Chartered - Licensed insurance carrier or domiciled RRG..... 3
- 2. R - Registered - Non-domiciled RRGs..... 0
- 3. E - Eligible - Reporting entities eligible or approved to write surplus lines in the state. 0
- 4. Q - Qualified - Qualified or accredited reinsurer..... 0
- 5. N - None of the above - Not allowed to write business in the state..... 54

SCHEDULE Y - INFORMATION CONCERNING ACTIVITIES OF INSURANCE MEMBERS OF A HOLDING COMPANY GROUP

PART 1 - ORGANIZATIONAL CHART



This organizational chart reflects the insurance entity reporting system and identifies the relationship between the ultimate parent and all member insurers. The ultimate controlling company is a Fortune 6 company with numerous subsidiaries, the majority of which do not interact with the insurance entities.

(1) Insurers/HMO's

Percentages are rounded to the nearest whole percent and based on ownership of voting rights.

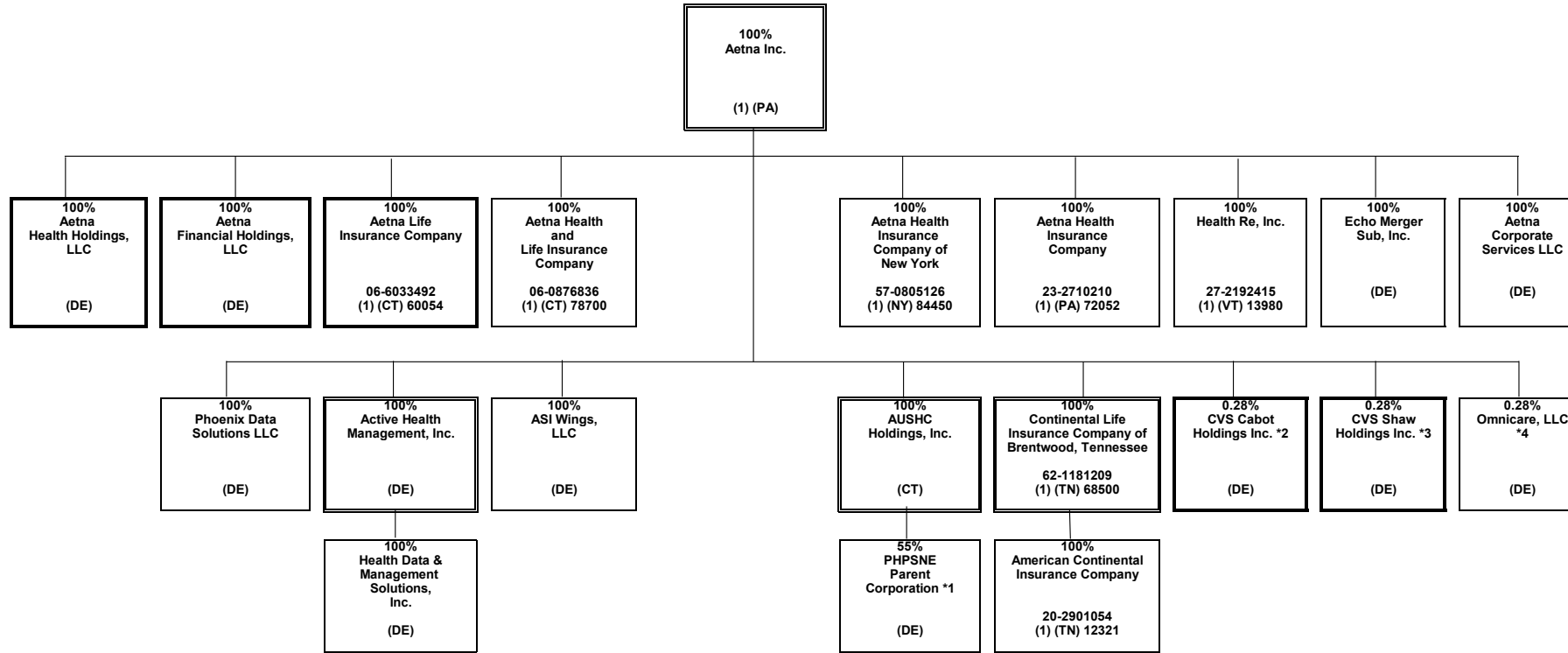
Double borders indicate entity has subsidiaries shown on the same page.

Bold borders indicate entity has subsidiaries shown on a separate page.

*1 Coram Clinical Trials, Inc. is also 25% owned by Aetna Life Insurance Company

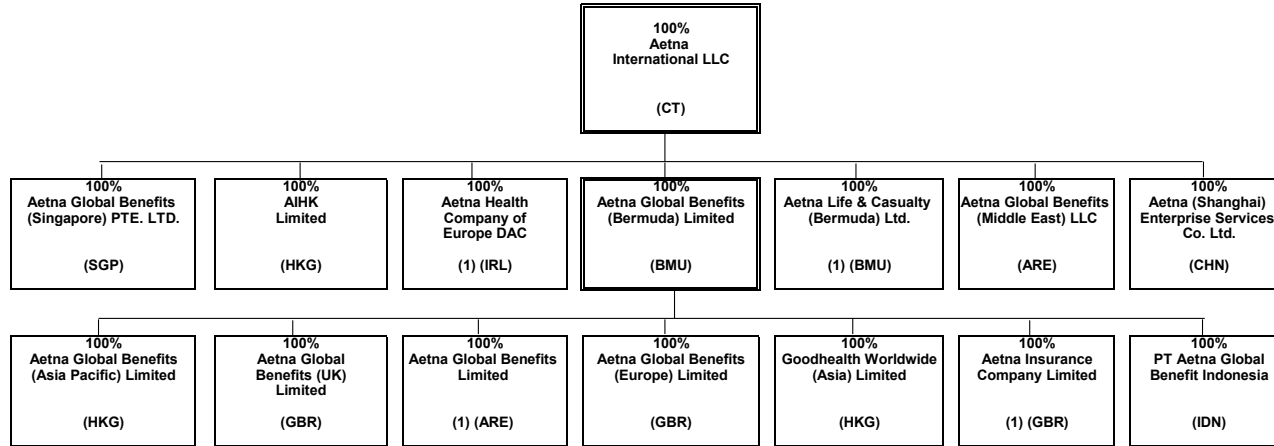
SCHEDULE Y - INFORMATION CONCERNING ACTIVITIES OF INSURANCE MEMBERS OF A HOLDING COMPANY GROUP

PART 1 - ORGANIZATIONAL CHART



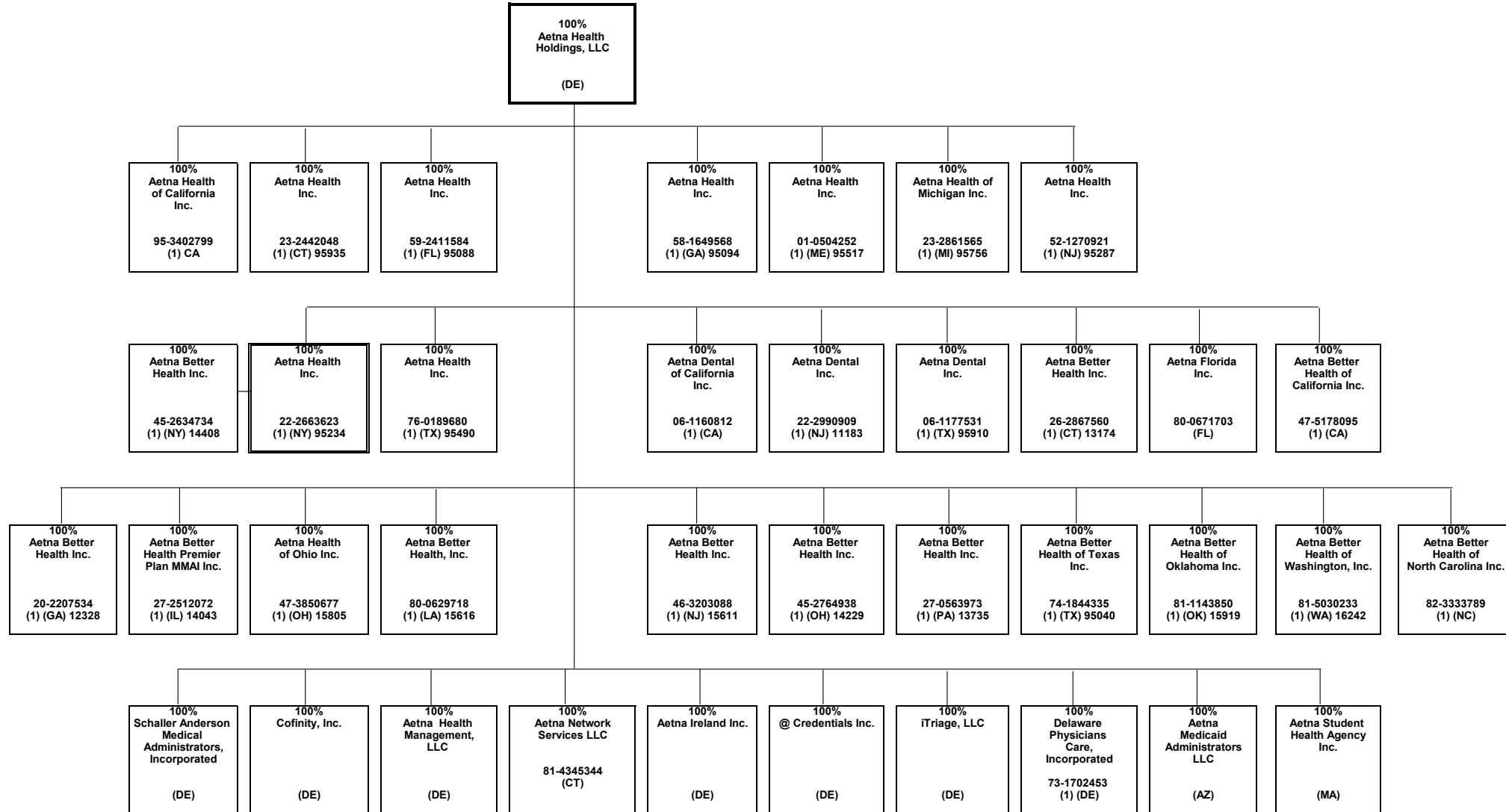
*1 PHPSNE Parent Corporation is also 45% owned by third parties.
 *2 CVS Cabot Holdings Inc. is also 99.72% owned by Coram Clinical Trials, Inc.
 *3 CVS Shaw Holdings Inc. is also 99.72% owned by Coram Clinical Trials, Inc.
 *4 Omnicare, LLC is also owned by CVS Cabot Holdings Inc and CVS Shaw Holdings Inc., each with 49.86% ownership.

SCHEDULE Y - INFORMATION CONCERNING ACTIVITIES OF INSURANCE MEMBERS OF A HOLDING COMPANY GROUP
PART 1 - ORGANIZATIONAL CHART



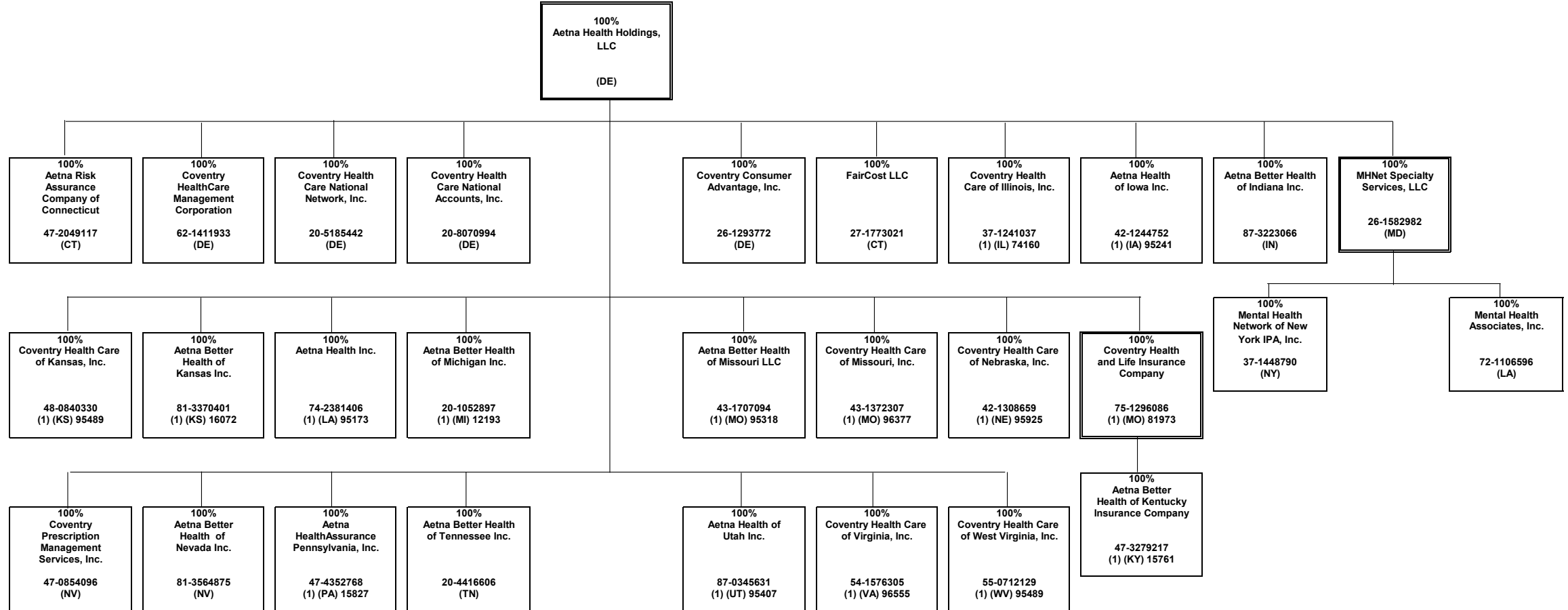
SCHEDULE Y - INFORMATION CONCERNING ACTIVITIES OF INSURANCE MEMBERS OF A HOLDING COMPANY GROUP

PART 1 - ORGANIZATIONAL CHART



SCHEDULE Y - INFORMATION CONCERNING ACTIVITIES OF INSURANCE MEMBERS OF A HOLDING COMPANY GROUP

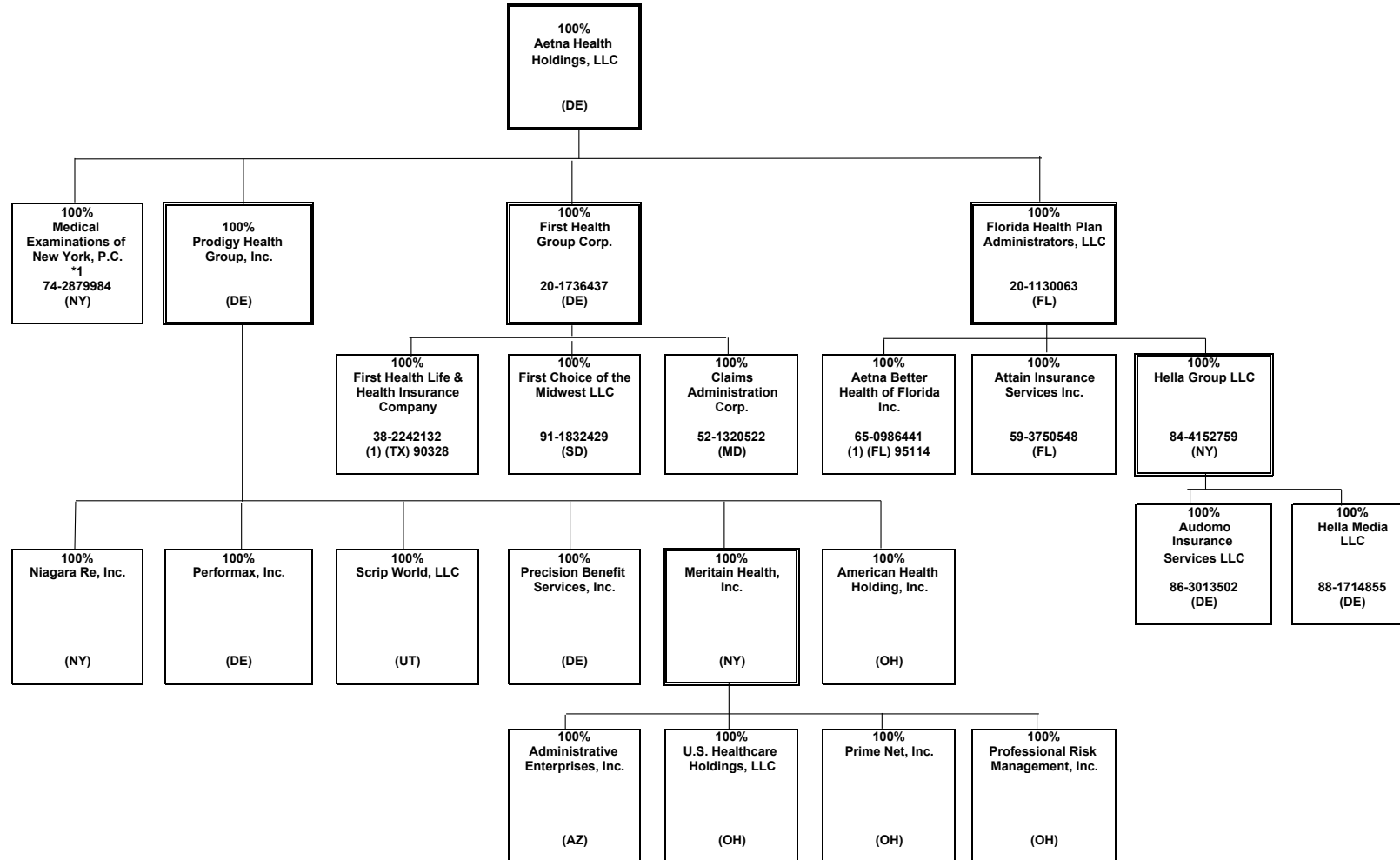
PART 1 - ORGANIZATIONAL CHART



15.4

SCHEDULE Y - INFORMATION CONCERNING ACTIVITIES OF INSURANCE MEMBERS OF A HOLDING COMPANY GROUP

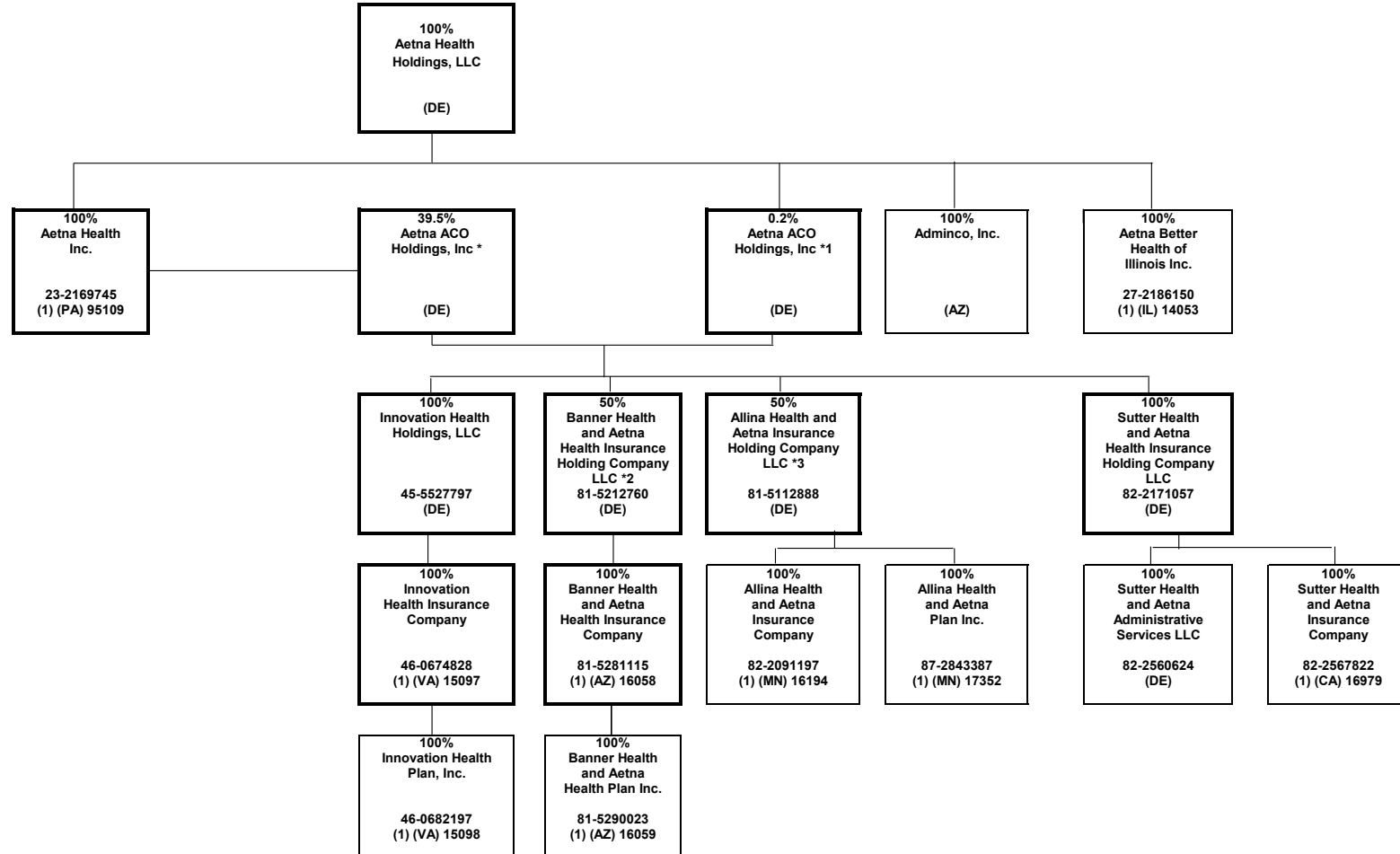
PART 1 - ORGANIZATIONAL CHART



*1 Owned via a nominee

SCHEDULE Y - INFORMATION CONCERNING ACTIVITIES OF INSURANCE MEMBERS OF A HOLDING COMPANY GROUP

PART 1 - ORGANIZATIONAL CHART



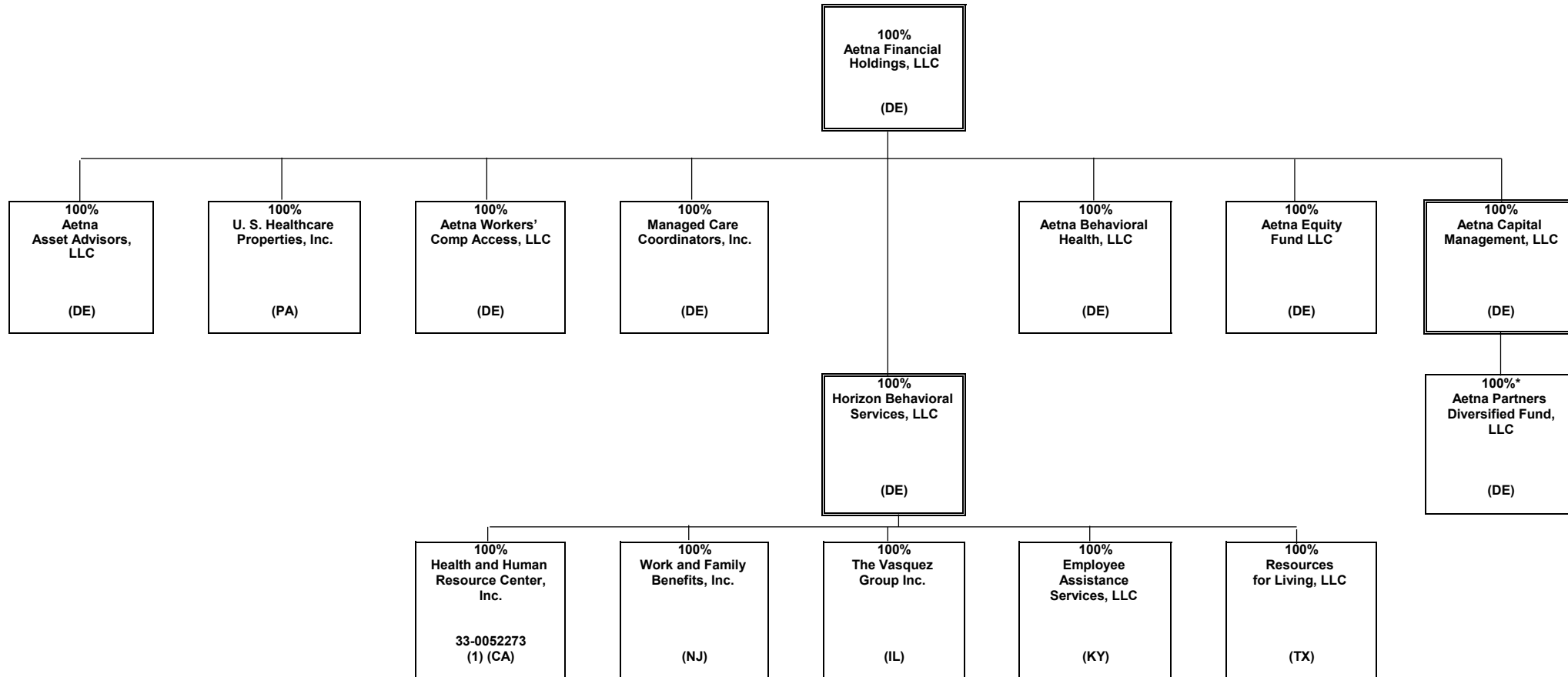
*1 Aetna ACO Holdings Inc. is owned by Aetna Life Insurance Company (302 shares); Aetna Health Inc. (PA) (198 shares); and Aetna Health Holdings, LLC (1 share).

*2 Banner Health and Aetna Health Insurance Holding Company LLC is also 50% owned by Banner Health.

*3 Allina Health and Aetna Insurance Holding Company LLC is also 50% owned by Allina Health.

SCHEDULE Y - INFORMATION CONCERNING ACTIVITIES OF INSURANCE MEMBERS OF A HOLDING COMPANY GROUP

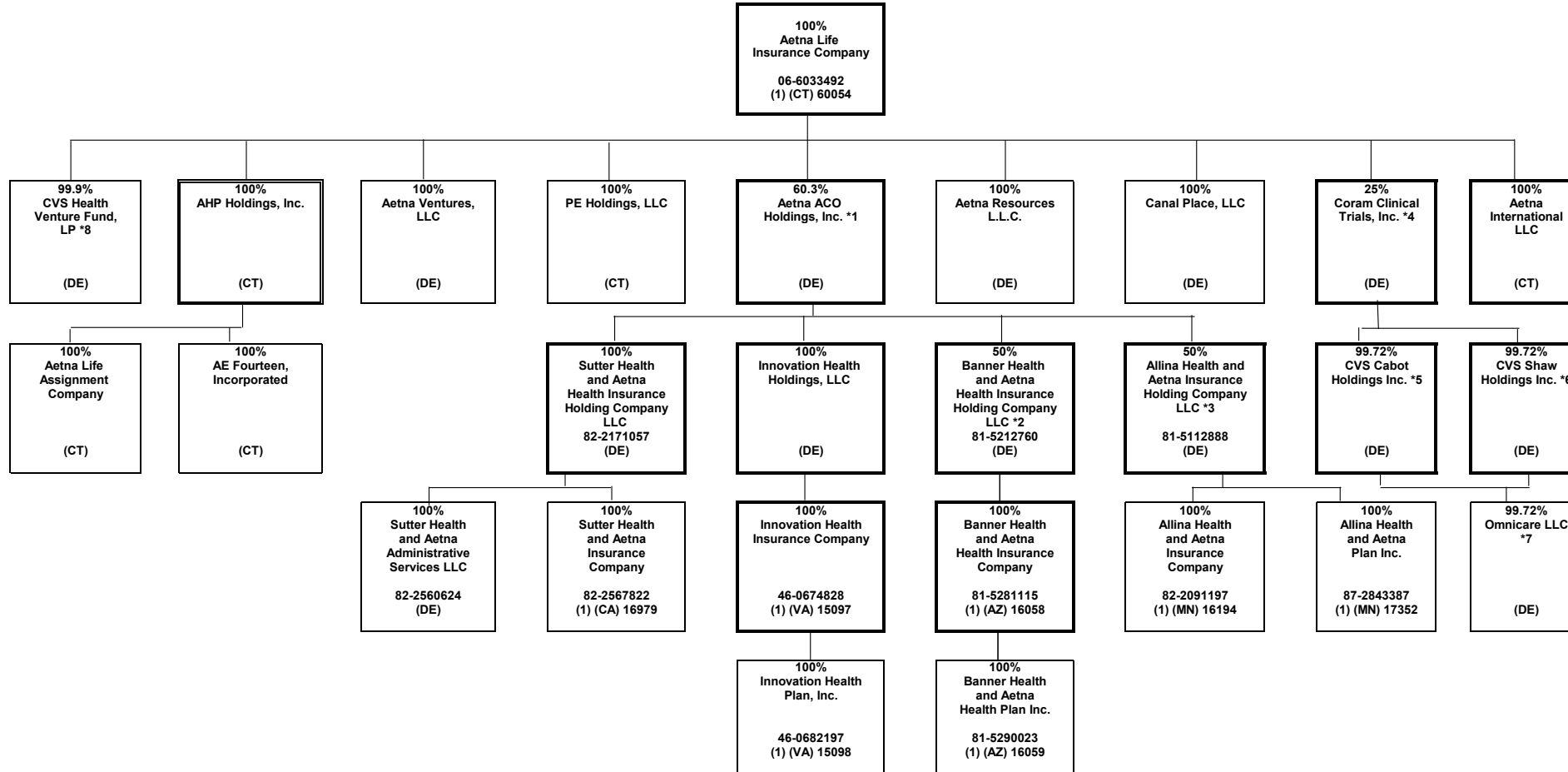
PART 1 - ORGANIZATIONAL CHART



* Aetna Capital Management, LLC is the managing member of Aetna Partners Diversified Fund, LLC ("APDF"). APDF is a fund of hedge funds and certain subsidiaries of CVS Health Group invest in this fund, which does not confer any managing or controlling ownership interests in APDF. Aetna Life Insurance Company is the largest investor in APDF and currently owns a majority of the non-managing member interests of APDF.

SCHEDULE Y - INFORMATION CONCERNING ACTIVITIES OF INSURANCE MEMBERS OF A HOLDING COMPANY GROUP

PART 1 - ORGANIZATIONAL CHART



*1 Aetna ACO Holdings Inc. is owned by Aetna Life Insurance Company (302 shares); Aetna Health Inc. (PA) (198 shares); and Aetna Health Holdings, LLC (1 share).
 *2 Banner Health and Aetna Health Insurance Holding Company LLC is also 50% owned by Banner Health.
 *3 Allina Health and Aetna Insurance Holding Company LLC is also 50% owned by Allina Health System.
 *4 Coram Clinical Trials, Inc. is also 75% owned by CVS Pharmacy, Inc.
 *5 CVS Cabot Holdings Inc. is also 0.28% owned by Aetna Inc.
 *6 CVS Shaw Holdings Inc. is also 0.28% owned by Aetna Inc.
 *7 Remaining 0.28% owned by Aetna Inc. CVS Cabot Holdings Inc. and CVS Shaw Holdings Inc. each owning 49.86%.
 *8 CVS Health Venture Fund, LP is also 0.1% owned by CVS Helath Ventures Fund GP, LLC

STATEMENT AS OF SEPTEMBER 30, 2024 OF THE Aetna Better Health of Michigan Inc.

SCHEDULE Y
PART 1A - DETAIL OF INSURANCE HOLDING COMPANY SYSTEM

1	2	3	4	5	6	7	8	9	10	11	12	13	14	15	16
Group Code	Group Name	NAIC Company Code	ID Number	Federal RSSD	CIK	Name of Securities Exchange if Publicly Traded (U.S. or International)	Names of Parent, Subsidiaries Or Affiliates	Domiciliary Location	Relationship to Reporting Entity	Directly Controlled by (Name of Entity/Person)	Type of Control (Ownership, Board, Management, Attorney-in-Fact, Influence, Other)	If Control is Ownership Provide Percentage	Ultimate Controlling Entity(ies)/Person(s)	Is an SCA Filing Required? (Yes/No)	*
.0001	CVS HEALTH GROUP		05-0494040		0000064803	NYSE	CVS Health Corporation	DE	UIP	Board of Directors	Board of Directors	100.000	CVS Health Corporation	NO	0
.0001	CVS HEALTH GROUP	63444	06-1566092				Accendo Insurance Company	UT	IA	Part D Holding Company, L.L.C.	Ownership	100.000	CVS Health Corporation	NO	0
.0001	CVS HEALTH GROUP	12575	20-2833904				SilverScript Insurance Company	TN	IA	Part D Holding Company, L.L.C.	Ownership	100.000	CVS Health Corporation	NO	0
.0001	CVS HEALTH GROUP	00000	05-0340626				CVS Pharmacy, Inc.	RI	UIP	CVS Health Corporation	Ownership	100.000	CVS Health Corporation	NO	0
.0001	CVS HEALTH GROUP	00000	20-8404182				Caremark Rx, L.L.C.	DE	NIA	CVS Pharmacy, Inc	Ownership	100.000	CVS Health Corporation	NO	0
.0001	CVS HEALTH GROUP	00000	61-1715010				Part D Holding Company, L.L.C.	DE	NIA	Caremark, Rx., L.L.C.	Ownership	100.000	CVS Health Corporation	NO	0
.0001	CVS HEALTH GROUP	00000	33-1113587				CVS Caremark Part D Services, L.L.C.	DE	NIA	Caremark, Rx., L.L.C.	Ownership	100.000	CVS Health Corporation	NO	0
.0001	CVS HEALTH GROUP	00000	87-0548860				RxAmerica, L.L.C.	DE	NIA	Caremark, Rx., L.L.C.	Ownership	100.000	CVS Health Corporation	NO	0
.0001	CVS HEALTH GROUP	00000	11-2580136				Caremark Ulysses Holding Corporation	NY	NIA	Caremark, Rx., L.L.C.	Ownership	100.000	CVS Health Corporation	NO	0
.0001	CVS HEALTH GROUP	00000	87-0804047				MemberHealth, L.L.C.	DE	NIA	Caremark Ulysses Holding Corporation	Ownership	100.000	CVS Health Corporation	NO	0
.0001	CVS HEALTH GROUP	00000	05-0500188				CVS Caremark Indemnity, Ltd.	BMU	IA	CVS Foreign, Inc.	Ownership	100.000	CVS Health Corporation	NO	0
.0001	CVS HEALTH GROUP	00000	27-1298765				UAC Holding, Inc.	DE	NIA	Caremark Ulysses Holding Corporation	Ownership	100.000	CVS Health Corporation	NO	0
.0001	CVS HEALTH GROUP	00000	05-0497953				CVS Foreign, Inc.	NY	NIA	CVS Health Corporation	Ownership	100.000	CVS Health Corporation	NO	0
.0001	CVS HEALTH GROUP	00000	58-2160656				Coram Clinical Trials, Inc.	DE	NIA	CVS Pharmacy, Inc	Ownership	75.000	CVS Health Corporation	NO	6
.0001	CVS HEALTH GROUP	00000	23-2229683	3060706	0001122304		Aetna Inc.	PA	UIP	CVS Pharmacy, Inc	Ownership	100.000	CVS Health Corporation	NO	0
.0001	CVS HEALTH GROUP	00000	30-0123754				Aetna Health Holdings, LLC	DE	UDP	Aetna Inc.	Ownership	100.000	CVS Health Corporation	NO	0
.0001	CVS HEALTH GROUP	00000	95-3402799				Aetna Health of California Inc.	CA	IA	Aetna Health Holdings, LLC	Ownership	100.000	CVS Health Corporation	NO	0
.0001	CVS HEALTH GROUP	95935	23-2442048				Aetna Health Inc.	CT	IA	Aetna Health Holdings, LLC	Ownership	100.000	CVS Health Corporation	NO	0
.0001	CVS HEALTH GROUP	95088	59-2411584				Aetna Health Inc.	FL	IA	Aetna Health Holdings, LLC	Ownership	100.000	CVS Health Corporation	NO	0
.0001	CVS HEALTH GROUP	95094	58-1649568				Aetna Health Inc.	GA	IA	Aetna Health Holdings, LLC	Ownership	100.000	CVS Health Corporation	NO	0
.0001	CVS HEALTH GROUP	95517	01-0504252				Aetna Health Inc.	ME	IA	Aetna Health Holdings, LLC	Ownership	100.000	CVS Health Corporation	NO	0
.0001	CVS HEALTH GROUP	95756	23-2861565				Aetna Health of Michigan Inc.	MI	IA	Aetna Health Holdings, LLC	Ownership	100.000	CVS Health Corporation	NO	0
.0001	CVS HEALTH GROUP	95287	52-1270921				Aetna Health Inc.	NJ	IA	Aetna Health Holdings, LLC	Ownership	100.000	CVS Health Corporation	NO	0
.0001	CVS HEALTH GROUP	95234	22-2663623				Aetna Health Inc.	NY	IA	Aetna Health Holdings, LLC	Ownership	100.000	CVS Health Corporation	NO	0
.0001	CVS HEALTH GROUP	14408	45-2634734				Aetna Better Health Inc.	NY	IA	Aetna Health Inc. (NY)	Ownership	100.000	CVS Health Corporation	NO	0
.0001	CVS HEALTH GROUP	95490	76-0189680				Aetna Health Inc.	TX	IA	Aetna Health Holdings, LLC	Ownership	100.000	CVS Health Corporation	NO	0
.0001	CVS HEALTH GROUP	95040	74-1844335				Aetna Better Health of Texas Inc.	TX	IA	Aetna Health Holdings, LLC	Ownership	100.000	CVS Health Corporation	NO	0
.0001	CVS HEALTH GROUP	12328	20-2207534				Aetna Better Health Inc.	GA	IA	Aetna Health Holdings, LLC	Ownership	100.000	CVS Health Corporation	NO	0
.0001	CVS HEALTH GROUP	00000	06-1160812				Aetna Dental of California Inc.	CA	IA	Aetna Health Holdings, LLC	Ownership	100.000	CVS Health Corporation	NO	0
.0001	CVS HEALTH GROUP	11183	22-2990909				Aetna Dental Inc.	NJ	IA	Aetna Health Holdings, LLC	Ownership	100.000	CVS Health Corporation	NO	0
.0001	CVS HEALTH GROUP	95910	06-1177531				Aetna Dental Inc.	TX	IA	Aetna Health Holdings, LLC	Ownership	100.000	CVS Health Corporation	NO	0
.0001	CVS HEALTH GROUP	00000	13-3670795				Aetna Health Management, LLC	DE	NIA	Aetna Health Holdings, LLC	Ownership	100.000	CVS Health Corporation	NO	0
.0001	CVS HEALTH GROUP	00000	22-3187443				Aetna Ireland Inc.	DE	NIA	Aetna Health Holdings, LLC	Ownership	100.000	CVS Health Corporation	NO	0
.0001	CVS HEALTH GROUP	00000	20-1274723				Cofinity, Inc.	DE	NIA	Aetna Health Holdings, LLC	Ownership	100.000	CVS Health Corporation	NO	0
.0001	CVS HEALTH GROUP	00000	23-2671370				@Credentials Inc.	DE	NIA	Aetna Health Holdings, LLC	Ownership	100.000	CVS Health Corporation	NO	0
.0001	CVS HEALTH GROUP	13735	27-0563973				Aetna Better Health Inc.	PA	IA	Aetna Health Holdings, LLC	Ownership	100.000	CVS Health Corporation	NO	0
.0001	CVS HEALTH GROUP	13174	26-2867560				Aetna Better Health Inc.	CT	IA	Aetna Health Holdings, LLC	Ownership	100.000	CVS Health Corporation	NO	0
.0001	CVS HEALTH GROUP	00000	47-5178095				Aetna Better Health of California Inc.	CA	IA	Aetna Health Holdings, LLC	Ownership	100.000	CVS Health Corporation	NO	0
.0001	CVS HEALTH GROUP	14043	27-2512072				Aetna Better Health Premier Plan MMAI Inc.	IL	IA	Aetna Health Holdings, LLC	Ownership	100.000	CVS Health Corporation	NO	0
.0001	CVS HEALTH GROUP	15805	47-3850677				Aetna Health of Ohio Inc.	OH	IA	Aetna Health Holdings, LLC	Ownership	100.000	CVS Health Corporation	NO	0
.0001	CVS HEALTH GROUP	15616	80-0629718				Aetna Better Health, Inc.	LA	IA	Aetna Health Holdings, LLC	Ownership	100.000	CVS Health Corporation	NO	0
.0001	CVS HEALTH GROUP	00000	80-0671703				Aetna Florida Inc.	FL	NIA	Aetna Health Holdings, LLC	Ownership	100.000	CVS Health Corporation	NO	0
.0001	CVS HEALTH GROUP	14229	45-2764938				Aetna Better Health Inc.	OH	IA	Aetna Health Holdings, LLC	Ownership	100.000	CVS Health Corporation	NO	0
.0001	CVS HEALTH GROUP	15611	46-3203088				Aetna Better Health Inc.	NJ	IA	Aetna Health Holdings, LLC	Ownership	100.000	CVS Health Corporation	NO	0
.0001	CVS HEALTH GROUP	15919	81-1143850				Aetna Better Health of Oklahoma Inc.	OK	IA	Aetna Health Holdings, LLC	Ownership	100.000	CVS Health Corporation	NO	0
.0001	CVS HEALTH GROUP	00000	04-2708160				Aetna Student Health Agency Inc.	MA	NIA	Aetna Health Holdings, LLC	Ownership	100.000	CVS Health Corporation	NO	0
.0001	CVS HEALTH GROUP	00000	73-1702453				Delaware Physicians Care, Incorporated	DE	NIA	Aetna Health Holdings, LLC	Ownership	100.000	CVS Health Corporation	NO	0
.0001	CVS HEALTH GROUP	00000	01-0826783				Schaller Anderson Medical Administrators, Incorporated	DE	NIA	Aetna Health Holdings, LLC	Ownership	100.000	CVS Health Corporation	NO	0

STATEMENT AS OF SEPTEMBER 30, 2024 OF THE Aetna Better Health of Michigan Inc.

SCHEDULE Y
PART 1A - DETAIL OF INSURANCE HOLDING COMPANY SYSTEM

1	2	3	4	5	6	7	8	9	10	11	12	13	14	15	16
Group Code	Group Name	NAIC Company Code	ID Number	Federal RSSD	CIK	Name of Securities Exchange if Publicly Traded (U.S. or International)	Names of Parent, Subsidiaries Or Affiliates	Domiciliary Location	Relationship to Reporting Entity	Directly Controlled by (Name of Entity/Person)	Type of Control (Ownership, Board, Management, Attorney-in-Fact, Influence, Other)	If Control is Ownership Provide Percentage	Ultimate Controlling Entity(ies)/Person(s)	Is an SCA Filing Required? (Yes/No)	*
.0001	CVS HEALTH GROUP	00000	86-0842559				Aetna Medicaid Administrators LLC	AZ	NIA	Aetna Health Holdings, LLC	Ownership	100.000	CVS Health Corporation	NO	0
.0001	CVS HEALTH GROUP	00000	45-2944270				iTriage, LLC	DE	NIA	Aetna Health Holdings, LLC	Ownership	100.000	CVS Health Corporation	NO	0
.0001	CVS HEALTH GROUP	00000	16-1471176				Prodigy Health Group, Inc.	DE	NIA	Aetna Health Holdings, LLC	Ownership	100.000	CVS Health Corporation	NO	0
.0001	CVS HEALTH GROUP	00000	45-4901541				Aetna ACO Holdings, Inc.	DE	NIA	Aetna Health Holdings, LLC	Ownership	0.200	CVS Health Corporation	NO	2
.0001	CVS HEALTH GROUP	00000	74-2879984				Medical Examinations of New York, P.C.	NY	NIA	Aetna Health Holdings, LLC	Ownership	100.000	CVS Health Corporation	NO	11
.0001	CVS HEALTH GROUP	00000	45-5527797				Innovation Health Holdings, LLC	DE	NIA	Aetna ACO Holdings, Inc.	Ownership	100.000	CVS Health Corporation	NO	0
.0001	CVS HEALTH GROUP	15097	46-0674828				Innovation Health Insurance Company	VA	IA	Innovation Health Holdings, LLC	Ownership	100.000	CVS Health Corporation	NO	0
.0001	CVS HEALTH GROUP	15098	46-0682197				Innovation Health Plan, Inc.	VA	IA	Innovation Health Insurance Company	Ownership	100.000	CVS Health Corporation	NO	0
.0001	CVS HEALTH GROUP	95109	23-2169745				Aetna Health Inc.	PA	IA	Aetna Health Holdings, LLC	Ownership	100.000	CVS Health Corporation	YES	0
.0001	CVS HEALTH GROUP	00000	45-4901541				Aetna ACO Holdings, Inc.	DE	NIA	Aetna Health Inc. (PA)	Ownership	39.500	CVS Health Corporation	NO	2
.0001	CVS HEALTH GROUP	00000	20-0438576				Niagara Re, Inc.	NY	NIA	Prodigy Health Group, Inc.	Ownership	100.000	CVS Health Corporation	NO	0
.0001	CVS HEALTH GROUP	00000	52-2200070				Performax, Inc.	DE	NIA	Prodigy Health Group, Inc.	Ownership	100.000	CVS Health Corporation	NO	0
.0001	CVS HEALTH GROUP	00000	87-0632355				Scrip World, LLC	UT	NIA	Prodigy Health Group, Inc.	Ownership	100.000	CVS Health Corporation	NO	0
.0001	CVS HEALTH GROUP	00000	27-1760756				Precision Benefit Services, Inc.	DE	NIA	Prodigy Health Group, Inc.	Ownership	100.000	CVS Health Corporation	NO	0
.0001	CVS HEALTH GROUP	00000	31-1368946				American Health Holding, Inc.	OH	NIA	Prodigy Health Group, Inc.	Ownership	100.000	CVS Health Corporation	NO	0
.0001	CVS HEALTH GROUP	00000	16-1264154				Meritain Health, Inc.	NY	NIA	Prodigy Health Group, Inc.	Ownership	100.000	CVS Health Corporation	NO	0
.0001	CVS HEALTH GROUP	00000	86-0537707				Adminco, Inc.	AZ	NIA	Aetna Health Holdings, LLC	Ownership	100.000	CVS Health Corporation	NO	0
.0001	CVS HEALTH GROUP	00000	86-0527428				Administrative Enterprises, Inc.	AZ	NIA	Meritain Health, Inc.	Ownership	100.000	CVS Health Corporation	NO	0
.0001	CVS HEALTH GROUP	00000	16-1684061				U.S. Healthcare Holdings, LLC	OH	NIA	Meritain Health, Inc.	Ownership	100.000	CVS Health Corporation	NO	0
.0001	CVS HEALTH GROUP	00000	34-1670299				Prime Net, Inc.	OH	NIA	Meritain Health, Inc.	Ownership	100.000	CVS Health Corporation	NO	0
.0001	CVS HEALTH GROUP	00000	34-1348032				Professional Risk Management, Inc.	OH	NIA	Meritain Health, Inc.	Ownership	100.000	CVS Health Corporation	NO	0
.0001	CVS HEALTH GROUP	68500	62-1181209				Continental Life Insurance Company of Brentwood, Tennessee	TN	IA	Aetna Inc.	Ownership	100.000	CVS Health Corporation	NO	0
.0001	CVS HEALTH GROUP	12321	20-2901054				American Continental Insurance Company	TN	IA	Continental Life Insurance Company of Brentwood, Tennessee	Ownership	100.000	CVS Health Corporation	NO	0
.0001	CVS HEALTH GROUP	60054	06-6033492				Aetna Life Insurance Company	CT	IA	Aetna Inc.	Ownership	100.000	CVS Health Corporation	YES	0
.0001	CVS HEALTH GROUP	00000	45-4901541				Aetna ACO Holdings, Inc.	DE	NIA	Aetna Life Insurance Company	Ownership	60.300	CVS Health Corporation	NO	2
.0001	CVS HEALTH GROUP	00000	06-1270755				AHP Holdings, Inc.	CT	NIA	Aetna Life Insurance Company	Ownership	100.000	CVS Health Corporation	NO	0
.0001	CVS HEALTH GROUP	00000	06-1028469				AE Fourteen, Incorporated	CT	NIA	AHP Holdings, Inc.	Ownership	100.000	CVS Health Corporation	NO	0
.0001	CVS HEALTH GROUP	00000	06-1373153				Aetna Life Assignment Company	CT	NIA	AHP Holdings, Inc.	Ownership	100.000	CVS Health Corporation	NO	0
.0001	CVS HEALTH GROUP	00000	20-3678339				PE Holdings, LLC	CT	NIA	Aetna Life Insurance Company	Ownership	100.000	CVS Health Corporation	NO	0
.0001	CVS HEALTH GROUP	00000	06-1423207				Aetna Resources L.L.C.	DE	NIA	Aetna Life Insurance Company	Ownership	100.000	CVS Health Corporation	NO	0
.0001	CVS HEALTH GROUP	00000	06-1423207				Canal Place, LLC	DE	NIA	Aetna Life Insurance Company	Ownership	100.000	CVS Health Corporation	NO	0
.0001	CVS HEALTH GROUP	00000	20-3180700				Aetna Ventures, LLC	DE	NIA	Aetna Life Insurance Company	Ownership	100.000	CVS Health Corporation	NO	0
.0001	CVS HEALTH GROUP	00000	58-2160656				Coram Clinical Trials, Inc.	DE	NIA	Aetna Life Insurance Company	Ownership	25.000	CVS Health Corporation	NO	6
.0001	CVS HEALTH GROUP	00000	85-3918720				CVS Cabot Holdings Inc.	DE	NIA	Coram Clinical Trials, Inc.	Ownership	99.720	CVS Health Corporation	NO	7
.0001	CVS HEALTH GROUP	00000	85-3918567				CVS Shaw Holdings Inc.	DE	NIA	Coram Clinical Trials, Inc.	Ownership	99.720	CVS Health Corporation	NO	8
.0001	CVS HEALTH GROUP	00000	31-1001351				Omnicare, LLC	DE	NIA	CVS Cabot Holdings Inc	Ownership	49.860	CVS Health Corporation	NO	9
.0001	CVS HEALTH GROUP	00000	31-1001351				Omnicare, LLC	DE	NIA	CVS Shaw Holdings Inc	Ownership	49.860	CVS Health Corporation	NO	9
.0001	CVS HEALTH GROUP	00000	41-2035961				Aetna Financial Holdings, LLC	DE	NIA	Aetna Inc.	Ownership	100.000	CVS Health Corporation	NO	0
.0001	CVS HEALTH GROUP	00000	26-2030792				Aetna Asset Advisors, LLC	DE	NIA	Aetna Financial Holdings, LLC	Ownership	100.000	CVS Health Corporation	NO	0
.0001	CVS HEALTH GROUP	00000	23-2354500				U.S. Healthcare Properties, Inc.	PA	NIA	Aetna Financial Holdings, LLC	Ownership	100.000	CVS Health Corporation	NO	0
.0001	CVS HEALTH GROUP	00000	38-3704481				Aetna Capital Management, LLC	DE	NIA	Aetna Financial Holdings, LLC	Ownership	100.000	CVS Health Corporation	NO	0
.0001	CVS HEALTH GROUP	00000	23-0786680				Aetna Equity Fund LLC	DE	NIA	Aetna Financial Holdings, LLC	Ownership	100.000	CVS Health Corporation	NO	0
.0001	CVS HEALTH GROUP	00000	11-3667142		0001314522		Aetna Partners Diversified Fund, LLC	DE	NIA	Aetna Capital Management, LLC	Ownership	100.000	CVS Health Corporation	NO	1
.0001	CVS HEALTH GROUP	00000	20-0446676				Aetna Workers' Comp Access, LLC	DE	NIA	Aetna Financial Holdings, LLC	Ownership	100.000	CVS Health Corporation	NO	0
.0001	CVS HEALTH GROUP	00000	20-0446713				Aetna Behavioral Health, LLC	DE	NIA	Aetna Financial Holdings, LLC	Ownership	100.000	CVS Health Corporation	NO	0
.0001	CVS HEALTH GROUP	00000	23-2670015				Managed Care Coordinators, Inc.	DE	NIA	Aetna Financial Holdings, LLC	Ownership	100.000	CVS Health Corporation	NO	0
.0001	CVS HEALTH GROUP	00000	59-3269144				Horizon Behavioral Services, LLC	DE	NIA	Aetna Financial Holdings, LLC	Ownership	100.000	CVS Health Corporation	NO	0

STATEMENT AS OF SEPTEMBER 30, 2024 OF THE Aetna Better Health of Michigan Inc.

SCHEDULE Y
PART 1A - DETAIL OF INSURANCE HOLDING COMPANY SYSTEM

1	2	3	4	5	6	7	8	9	10	11	12	13	14	15	16
Group Code	Group Name	NAIC Company Code	ID Number	Federal RSSD	CIK	Name of Securities Exchange if Publicly Traded (U.S. or International)	Names of Parent, Subsidiaries Or Affiliates	Domiciliary Location	Relationship to Reporting Entity	Directly Controlled by (Name of Entity/Person)	Type of Control (Ownership, Board, Management, Attorney-in-Fact, Influence, Other)	If Control is Ownership Provide Percentage	Ultimate Controlling Entity(ies)/Person(s)	Is an SCA Filing Required? (Yes/No)	*
.0001	CVS HEALTH GROUP	00000	61-1193498				Employee Assistance Services, LLC	..KY.....	..NIA.....	Horizon Behavioral Services, LLC	Ownership.....	100.000	CVS Health Corporation	..NO.....	0
.0001	CVS HEALTH GROUP	00000	33-0052273				Health and Human Resource Center, Inc.	..CA.....	..IA.....	Horizon Behavioral Services, LLC	Ownership.....	100.000	CVS Health Corporation	..NO.....	0
.0001	CVS HEALTH GROUP	00000	75-2420973				Resources for Living, LLC	..TX.....	..NIA.....	Horizon Behavioral Services, LLC	Ownership.....	100.000	CVS Health Corporation	..NO.....	0
.0001	CVS HEALTH GROUP	00000	36-3681261				The Vasquez Group Inc.	..IL.....	..NIA.....	Horizon Behavioral Services, LLC	Ownership.....	100.000	CVS Health Corporation	..NO.....	0
.0001	CVS HEALTH GROUP	00000	22-3178125				Work and Family Benefits, Inc.	..NJ.....	..NIA.....	Horizon Behavioral Services, LLC	Ownership.....	100.000	CVS Health Corporation	..NO.....	0
.0001	CVS HEALTH GROUP	00000	27-1773021				FairCost LLC	..CT.....	..NIA.....	Aetna Health Holdings, LLC	Ownership.....	100.000	CVS Health Corporation	..NO.....	0
.0001	CVS HEALTH GROUP	78700	06-0876836				Aetna Health and Life Insurance Company	..CT.....	..IA.....	Aetna Inc.	Ownership.....	100.000	CVS Health Corporation	..NO.....	0
.0001	CVS HEALTH GROUP	72052	23-2710210				Aetna Health Insurance Company	..PA.....	..IA.....	Aetna Inc.	Ownership.....	100.000	CVS Health Corporation	..NO.....	0
.0001	CVS HEALTH GROUP	84450	57-0805126				Aetna Health Insurance Company of New York	..NY.....	..IA.....	Aetna Inc.	Ownership.....	100.000	CVS Health Corporation	..NO.....	0
.0001	CVS HEALTH GROUP	00000	06-1571642				Aetna International LLC	..CT.....	..NIA.....	Aetna Life Insurance Company	Ownership.....	100.000	CVS Health Corporation	..NO.....	0
.0001	CVS HEALTH GROUP	00000	98-0211470				Aetna Life & Casualty (Bermuda) Ltd.	..BMU.....	..IA.....	Aetna International LLC	Ownership.....	100.000	CVS Health Corporation	..NO.....	0
.0001	CVS HEALTH GROUP	00000					Aetna Global Benefits (Bermuda) Limited	..BMU.....	..NIA.....	Aetna International LLC	Ownership.....	100.000	CVS Health Corporation	..NO.....	0
.0001	CVS HEALTH GROUP	00000					Aetna Global Benefits (Europe) Limited	..GBR.....	..NIA.....	Aetna Global Benefits (Bermuda) Limited	Ownership.....	100.000	CVS Health Corporation	..NO.....	0
.0001	CVS HEALTH GROUP	00000					Goodhealth Worldwide (Asia) Limited	..HKG.....	..NIA.....	Aetna Global Benefits (Bermuda) Limited	Ownership.....	100.000	CVS Health Corporation	..NO.....	0
.0001	CVS HEALTH GROUP	00000					Aetna Global Benefits Limited	..ARE.....	..NIA.....	Aetna Global Benefits (Bermuda) Limited	Ownership.....	100.000	CVS Health Corporation	..NO.....	0
.0001	CVS HEALTH GROUP	00000					PT Aetna Global Benefits Indonesia	..IDN.....	..NIA.....	Aetna Global Benefits (Bermuda) Limited	Ownership.....	100.000	CVS Health Corporation	..NO.....	0
.0001	CVS HEALTH GROUP	00000					Aetna Global Benefits (Middle East) LLC	..ARE.....	..NIA.....	Aetna International LLC	Ownership.....	100.000	CVS Health Corporation	..NO.....	0
.0001	CVS HEALTH GROUP	00000					Aetna Global Benefits (Asia Pacific) Limited	..HKG.....	..NIA.....	Aetna Global Benefits (Bermuda) Limited	Ownership.....	100.000	CVS Health Corporation	..NO.....	0
.0001	CVS HEALTH GROUP	00000					Aetna Global Benefits (UK) Limited	..GBR.....	..NIA.....	Aetna Global Benefits (Bermuda) Limited	Ownership.....	100.000	CVS Health Corporation	..NO.....	0
.0001	CVS HEALTH GROUP	00000					Aetna Insurance Company Limited	..GBR.....	..IA.....	Aetna Global Benefits (Bermuda) Limited	Ownership.....	100.000	CVS Health Corporation	..NO.....	0
.0001	CVS HEALTH GROUP	00000					Aetna Health Company of Europe DAC	..IRL.....	..IA.....	Aetna International LLC	Ownership.....	100.000	CVS Health Corporation	..NO.....	0
.0001	CVS HEALTH GROUP	00000					Aetna (Shanghai) Enterprise Services Co. Ltd.	..CHN.....	..NIA.....	Aetna International LLC	Ownership.....	100.000	CVS Health Corporation	..NO.....	0
.0001	CVS HEALTH GROUP	00000					Aetna Global Benefits (Singapore) PTE. LTD.	..SGP.....	..NIA.....	Aetna International LLC	Ownership.....	100.000	CVS Health Corporation	..NO.....	0
.0001	CVS HEALTH GROUP	00000	22-2578985				AUSHC Holdings, Inc.	..CT.....	..NIA.....	Aetna Inc.	Ownership.....	100.000	CVS Health Corporation	..NO.....	0
.0001	CVS HEALTH GROUP	00000					AIHK Limited	..HKG.....	..IA.....	Aetna International LLC	Ownership.....	100.000	CVS Health Corporation	..NO.....	0
.0001	CVS HEALTH GROUP	00000	06-1182176				PHPSNE Parent Corporation	..DE.....	..NIA.....	AUSHC Holdings, Inc.	Ownership.....	55.000	CVS Health Corporation	..NO.....	3
.0001	CVS HEALTH GROUP	00000	52-2182411				Active Health Management, Inc.	..DE.....	..NIA.....	Aetna Inc.	Ownership.....	100.000	CVS Health Corporation	..NO.....	0
.0001	CVS HEALTH GROUP	00000	47-0970432				Health Data & Management Solutions, Inc.	..DE.....	..NIA.....	Active Health Management, Inc.	Ownership.....	100.000	CVS Health Corporation	..NO.....	0
.0001	CVS HEALTH GROUP	13980	27-2192415				Health Re, Inc.	..VT.....	..IA.....	Aetna Inc.	Ownership.....	100.000	CVS Health Corporation	..NO.....	0
.0001	CVS HEALTH GROUP	00000	81-0579372				Phoenix Data Solutions LLC	..DE.....	..NIA.....	Aetna Inc.	Ownership.....	100.000	CVS Health Corporation	..NO.....	0
.0001	CVS HEALTH GROUP	00000	51-0029326				ASI Wings, LLC	..DE.....	..NIA.....	Aetna Inc.	Ownership.....	100.000	CVS Health Corporation	..NO.....	0
.0001	CVS HEALTH GROUP	00000	47-4556274				Echo Merger Sub, Inc.	..DE.....	..NIA.....	Aetna Inc.	Ownership.....	100.000	CVS Health Corporation	..NO.....	0
.0001	CVS HEALTH GROUP	00000	47-4547145				Aetna Corporate Services, LLC	..DE.....	..NIA.....	Aetna Inc.	Ownership.....	100.000	CVS Health Corporation	..NO.....	0
.0001	CVS HEALTH GROUP	00000	85-3918720				CVS Cabot Holdings Inc.	..DE.....	..NIA.....	Aetna Inc.	Ownership.....	0.280	CVS Health Corporation	..NO.....	7
.0001	CVS HEALTH GROUP	00000	85-3918567				CVS Shaw Holdings Inc.	..DE.....	..NIA.....	Aetna Inc.	Ownership.....	0.280	CVS Health Corporation	..NO.....	8
.0001	CVS HEALTH GROUP	00000	31-1001351				Omnicare, LLC	..DE.....	..NIA.....	Aetna Inc.	Ownership.....	0.280	CVS Health Corporation	..NO.....	9
.0001	CVS HEALTH GROUP	81973	75-1296086				Coventry Health and Life Insurance Company	..MO.....	..IA.....	Aetna Health Holdings, LLC	Ownership.....	100.000	CVS Health Corporation	..NO.....	0
.0001	CVS HEALTH GROUP	15761	47-3279217				Aetna Better Health of Kentucky Insurance Company	..KY.....	..IA.....	Coventry Health and Life Insurance Company	Ownership.....	100.000	CVS Health Corporation	..NO.....	0
.0001	CVS HEALTH GROUP	00000	81-4345344				Aetna Network Services LLC	..CT.....	..NIA.....	Aetna Health Holdings, LLC	Ownership.....	100.000	CVS Health Corporation	..NO.....	0
.0001	CVS HEALTH GROUP	95241	42-1244752				Aetna Health of Iowa Inc.	..IA.....	..IA.....	Aetna Health Holdings, LLC	Ownership.....	100.000	CVS Health Corporation	..NO.....	0
.0001	CVS HEALTH GROUP	95925	42-1308659				Coventry Health Care of Nebraska, Inc.	..NE.....	..IA.....	Aetna Health Holdings, LLC	Ownership.....	100.000	CVS Health Corporation	..NO.....	0
.0001	CVS HEALTH GROUP	00000	47-2049117				Aetna Risk Assurance Company of Connecticut Inc.	..CT.....	..IA.....	Aetna Health Holdings, LLC	Ownership.....	100.000	CVS Health Corporation	..NO.....	0
.0001	CVS HEALTH GROUP	95173	74-2381406				Aetna Health Inc.	..LA.....	..IA.....	Aetna Health Holdings, LLC	Ownership.....	100.000	CVS Health Corporation	..NO.....	0
.0001	CVS HEALTH GROUP	00000	47-0854096				Coventry Prescription Management Services, Inc.	..NV.....	..NIA.....	Aetna Health Holdings, LLC	Ownership.....	100.000	CVS Health Corporation	..NO.....	0

STATEMENT AS OF SEPTEMBER 30, 2024 OF THE Aetna Better Health of Michigan Inc.

SCHEDULE Y
PART 1A - DETAIL OF INSURANCE HOLDING COMPANY SYSTEM

1	2	3	4	5	6	7	8	9	10	11	12	13	14	15	16
Group Code	Group Name	NAIC Company Code	ID Number	Federal RSSD	CIK	Name of Securities Exchange if Publicly Traded (U.S. or International)	Names of Parent, Subsidiaries Or Affiliates	Domiciliary Location	Relationship to Reporting Entity	Directly Controlled by (Name of Entity/Person)	Type of Control (Ownership, Board, Management, Attorney-in-Fact, Influence, Other)	If Control is Ownership Provide Percentage	Ultimate Controlling Entity(ies)/Person(s)	Is an SCA Filing Required? (Yes/No)	*
.0001	CVS HEALTH GROUP	16148	81-3564875				Aetna Better Health of Nevada Inc.	NV	NIA	Aetna Health Holdings, LLC	Ownership	100.000	CVS Health Corporation	NO	0
.0001	CVS HEALTH GROUP	96555	54-1576305				Coventry Health Care of Virginia, Inc.	VA	IA	Aetna Health Holdings, LLC	Ownership	100.000	CVS Health Corporation	NO	0
.0001	CVS HEALTH GROUP	96377	43-1372307				Coventry Health Care of Missouri, Inc.	MO	IA	Aetna Health Holdings, LLC	Ownership	100.000	CVS Health Corporation	NO	0
.0001	CVS HEALTH GROUP	95318	43-1702094				Aetna Better Health of Missouri LLC	MO	IA	Aetna Health Holdings, LLC	Ownership	100.000	CVS Health Corporation	NO	0
.0001	CVS HEALTH GROUP	95408	55-0712129				Coventry Health Care of West Virginia, Inc.	WV	IA	Aetna Health Holdings, LLC	Ownership	100.000	CVS Health Corporation	NO	0
.0001	CVS HEALTH GROUP	00000	62-1411933				Coventry HealthCare Management Corporation	DE	NIA	Aetna Health Holdings, LLC	Ownership	100.000	CVS Health Corporation	NO	0
.0001	CVS HEALTH GROUP	15827	47-4352768				Aetna HealthAssurance Pennsylvania, Inc.	PA	IA	Aetna Health Holdings, LLC	Ownership	100.000	CVS Health Corporation	NO	0
.0001	CVS HEALTH GROUP	95489	48-0840330				Coventry Health Care of Kansas, Inc.	KS	IA	Aetna Health Holdings, LLC	Ownership	100.000	CVS Health Corporation	NO	0
.0001	CVS HEALTH GROUP	16072	81-3370401				Aetna Better Health of Kansas Inc.	KS	IA	Aetna Health Holdings, LLC	Ownership	100.000	CVS Health Corporation	NO	0
.0001	CVS HEALTH GROUP	12193	20-1052897				Aetna Better Health of Michigan Inc.	MI	RE	Aetna Health Holdings, LLC	Ownership	100.000	CVS Health Corporation	NO	0
.0001	CVS HEALTH GROUP	95407	87-0345631				Aetna Health of Utah Inc.	UT	IA	Aetna Health Holdings, LLC	Ownership	100.000	CVS Health Corporation	NO	0
.0001	CVS HEALTH GROUP	00000	20-4416606				Aetna Better Health of Tennessee Inc.	TN	NIA	Aetna Health Holdings, LLC	Ownership	100.000	CVS Health Corporation	NO	0
.0001	CVS HEALTH GROUP	74160	37-1241037				Coventry Health Care of Illinois, Inc.	IL	IA	Aetna Health Holdings, LLC	Ownership	100.000	CVS Health Corporation	NO	0
.0001	CVS HEALTH GROUP	00000	20-8070994				Coventry Health Care National Accounts, Inc.	DE	NIA	Aetna Health Holdings, LLC	Ownership	100.000	CVS Health Corporation	NO	0
.0001	CVS HEALTH GROUP	00000	20-5185442				Coventry Health Care National Network, Inc.	DE	NIA	Aetna Health Holdings, LLC	Ownership	100.000	CVS Health Corporation	NO	0
.0001	CVS HEALTH GROUP	00000	26-1293772				Coventry Consumer Advantage, Inc.	DE	NIA	Aetna Health Holdings, LLC	Ownership	100.000	CVS Health Corporation	NO	0
.0001	CVS HEALTH GROUP	00000	20-1736437				First Health Group Corp.	DE	NIA	Aetna Health Holdings, LLC	Ownership	100.000	CVS Health Corporation	NO	0
.0001	CVS HEALTH GROUP	90328	38-2242132				First Health Life & Health Insurance Company	TX	IA	First Health Group Corp.	Ownership	100.000	CVS Health Corporation	NO	0
.0001	CVS HEALTH GROUP	00000	91-1832429				First Choice of the Midwest LLC	SD	NIA	First Health Group Corp.	Ownership	100.000	CVS Health Corporation	NO	0
.0001	CVS HEALTH GROUP	00000	52-1320522				Claims Administration Corp.	MD	NIA	First Health Group Corp.	Ownership	100.000	CVS Health Corporation	NO	0
.0001	CVS HEALTH GROUP	00000	20-1130063				Florida Health Plan Administrators, LLC	FL	NIA	Aetna Health Holdings, LLC	Ownership	100.000	CVS Health Corporation	NO	0
.0001	CVS HEALTH GROUP	95114	65-0986441				Aetna Better Health of Florida Inc.	FL	IA	Florida Health Plan Administrators, LLC	Ownership	100.000	CVS Health Corporation	NO	0
.0001	CVS HEALTH GROUP	95266	84-4152759				Hella Group LLC	NY	NIA	Florida Health Plan Administrators, LLC	Ownership	100.000	CVS Health Corporation	NO	0
.0001	CVS HEALTH GROUP	00000	86-3013502				Audomo Insurance Services LLC	DE	NIA	Hella Group LLC	Ownership	100.000	CVS Health Corporation	NO	0
.0001	CVS HEALTH GROUP	00000	88-1714855				Hella Media LLC	DE	NIA	Hella Group LLC	Ownership	100.000	CVS Health Corporation	NO	0
.0001	CVS HEALTH GROUP	00000	59-3750548				Attain Insurance Services Inc.	FL	NIA	Florida Health Plan Administrators, LLC	Ownership	100.000	CVS Health Corporation	NO	0
.0001	CVS HEALTH GROUP	00000	26-1582982				MHNet Specialty Services, LLC	MD	NIA	Aetna Health Holdings, LLC	Ownership	100.000	CVS Health Corporation	NO	0
.0001	CVS HEALTH GROUP	00000	37-1448790				Mental Health Network of New York IPA, Inc.	NY	NIA	MHNet Specialty Services, LLC	Ownership	100.000	CVS Health Corporation	NO	0
.0001	CVS HEALTH GROUP	00000	72-1106596				Mental Health Associates, Inc.	LA	NIA	MHNet Specialty Services, LLC	Ownership	100.000	CVS Health Corporation	NO	0
.0001	CVS HEALTH GROUP	16242	81-5030233				Aetna Better Health of Washington, Inc.	WA	IA	Aetna Health Holdings, LLC	Ownership	100.000	CVS Health Corporation	NO	0
.0001	CVS HEALTH GROUP	00000	81-5212760				Banner Health and Aetna Health Insurance Holding Company LLC	DE	NIA	Aetna ACO Holdings, Inc.	Ownership	50.000	CVS Health Corporation	NO	4
.0001	CVS HEALTH GROUP	16058	81-5281115				Banner Health and Aetna Health Insurance Company	AZ	IA	Banner Health and Aetna Health Insurance Holding Company LLC	Ownership	100.000	CVS Health Corporation	NO	0
.0001	CVS HEALTH GROUP	16059	81-5290023				Banner Health and Aetna Health Plan Inc.	AZ	IA	Banner Health and Aetna Health Insurance Company	Ownership	100.000	CVS Health Corporation	NO	0
.0001	CVS HEALTH GROUP	00000	81-5112888				Allina Health and Aetna Health Insurance Holding Company LLC	DE	NIA	Aetna ACO Holdings, Inc.	Ownership	50.000	CVS Health Corporation	NO	5
.0001	CVS HEALTH GROUP	16194	82-2091197				Allina Health and Aetna Insurance Company	MN	IA	Allina Health and Aetna Health Insurance Holding Company LLC	Ownership	100.000	CVS Health Corporation	NO	0
.0001	CVS HEALTH GROUP	17352	87-2843387				Allina Health and Aetna Health Plan Inc.	MN	IA	Allina Health and Aetna Health Insurance Holding Company LLC	Ownership	100.000	CVS Health Corporation	NO	0
.0001	CVS HEALTH GROUP	00000	82-2171057				Sutter Health and Aetna Insurance Holding Company LLC	DE	NIA	Aetna ACO Holdings, Inc.	Ownership	100.000	CVS Health Corporation	NO	0
.0001	CVS HEALTH GROUP	00000	82-2560624				Sutter Health and Aetna Administrative Services LLC	DE	NIA	Sutter Health and Aetna Insurance Holding Company LLC	Ownership	100.000	CVS Health Corporation	NO	0
.0001	CVS HEALTH GROUP	16979	82-2567822				Sutter Health and Aetna Insurance Company	CA	IA	Sutter Health and Aetna Insurance Holding Company LLC	Ownership	100.000	CVS Health Corporation	NO	0
.0001	CVS HEALTH GROUP	16558	82-3333789				Aetna Better Health of North Carolina Inc.	NC	IA	Aetna Health Holdings, LLC	Ownership	100.000	CVS Health Corporation	NO	0

SCHEDULE Y
PART 1A - DETAIL OF INSURANCE HOLDING COMPANY SYSTEM

1	2	3	4	5	6	7	8	9	10	11	12	13	14	15	16
Group Code	Group Name	NAIC Company Code	ID Number	Federal RSSD	CIK	Name of Securities Exchange if Publicly Traded (U.S. or International)	Names of Parent, Subsidiaries Or Affiliates	Domiciliary Location	Relationship to Reporting Entity	Directly Controlled by (Name of Entity/Person)	Type of Control (Ownership, Board, Management, Attorney-in-Fact, Influence, Other)	If Control is Ownership Provide Percentage	Ultimate Controlling Entity(ies)/Person(s)	Is an SCA Filing Required? (Yes/No)	*
.0001	CVS HEALTH GROUP	14053	27-2186150				Aetna Better Health of Illinois Inc.	IL	IA	Aetna Health Holdings, LLC	Ownership	100.000	CVS Health Corporation	NO	0
.0001	CVS HEALTH GROUP	00000	87-3223066				Aetna Better Health of Indiana Inc.	IN	NIA	Aetna Health Holdings, LLC	Ownership	100.000	CVS Health Corporation	NO	0
.0001	CVS HEALTH GROUP	00000					CVS Health Venture Fund, LP	DE	NIA	Aetna Life Insurance Company	Ownership	100.000	CVS Health Corporation	NO	10

Asterisk	Explanation
1	Aetna Capital Management, LLC is the managing member of Aetna Partners Diversified Fund, LLC ("APDF"). APDF is a fund of hedge funds and certain other subsidiaries of CVS Health Group invest in this fund, which does not confer any managing or controlling ownership interests in APDF. Aetna Life Insurance Company is the largest investor in APDF and currently owns a majority of the non-managing member interests of APDF.
2	Aetna ACO Holdings Inc. is owned by Aetna Life Insurance Company (302 shares); Aetna Health Inc. (PA) (198 shares); and Aetna Health Holdings, LLC (1 share).
3	PHPSNE Parent Corporation is 55% owned by AUSHC Holdings, Inc. The remaining 45% is owned by thirteen different hospitals (non-affiliates) which are shareholders with varying degrees of ownership.
4	Banner Health and Aetna Health Insurance Holding Company LLC is also 50% owned by Banner Health.
5	Allina Health and Aetna Insurance Holding Company LLC is also 50% owned by Allina Health System.
6	Coram Clinical Trials, Inc. is 75% owned by CVS Pharmacy, Inc. and 25% owned by Aetna Life Insurance Company.
7	CVS Cabot Holdings Inc is owned 99.72% by Coram Clinical Trials, Inc. and 0.28% owned by Aetna Inc.
8	CVS Shaw Holdings Inc is owned 99.72% by Coram Clinical Trials, Inc. and 0.28% owned by Aetna Inc.
9	Omnicare, LLC is 0.28% owned by Aetna Inc. The Company is also owned by CVS Cabot Holdings Inc. and CVS Shaw Holdings Inc., with 49.86% each ownership.
10	CVS Health Venture Fund, LP is also 0.1% owned by CVS Health Ventures Fund GP, LLC
11	Medical Examinations of New York, P.C. is owned via a nominee.

SUPPLEMENTAL EXHIBITS AND SCHEDULES INTERROGATORIES

The following supplemental reports are required to be filed as part of your statement filing. However, in the event that your company does not transact the type of business for which the special report must be filed, your response of NO to the specific interrogatory will be accepted in lieu of filing a "NONE" report and a bar code will be printed below. If the supplement is required of your company but is not being filed for whatever reason enter SEE EXPLANATION and provide an explanation following the interrogatory questions.

	Response
1. Will the Medicare Part D Coverage Supplement be filed with the state of domicile and the NAIC with this statement?	NO

AUGUST FILING

2. Will the regulator-only (non-public) Communication of Internal Control Related Matters Noted in Audit be filed with the state of domicile and electronically with the NAIC (as a regulator-only non-public document) by August 1? The response for 1st and 3rd quarters should be N/A. A NO response resulting with a bar code is only appropriate in the 2nd quarter.	N/A
--	-----

Explanation:

1. The data for this supplement is not required to be filed.

Bar Code:

1. Medicare Part D Coverage Supplement [Document Identifier 365]



OVERFLOW PAGE FOR WRITE-INS

NONE

SCHEDULE A - VERIFICATION

Real Estate

	1 Year to Date	2 Prior Year Ended December 31
1. Book/adjusted carrying value, December 31 of prior year		
2. Cost of acquired:		
2.1 Actual cost at time of acquisition		
2.2 Additional investment made after acquisition		
3. Current year change in encumbrances		
4. Total gain (loss) on disposals		
5. Deduct amounts received on disposals		
6. Total foreign exchange change in book/adjusted carrying value		
7. Deduct current year's other than temporary impairment recognized		
8. Deduct current year's depreciation		
9. Book/adjusted carrying value at the end of current period (Lines 1+2+3+4-5+6-7-8)		
10. Deduct total nonadmitted amounts		
11. Statement value at end of current period (Line 9 minus Line 10)		

NONE

SCHEDULE B - VERIFICATION

Mortgage Loans

	1 Year to Date	2 Prior Year Ended December 31
1. Book value/recorded investment excluding accrued interest, December 31 of prior year	0	0
2. Cost of acquired:		
2.1 Actual cost at time of acquisition	2,881,250	0
2.2 Additional investment made after acquisition	0	0
3. Capitalized deferred interest and other	0	0
4. Accrual of discount	0	0
5. Unrealized valuation increase/(decrease)	0	0
6. Total gain (loss) on disposals	0	0
7. Deduct amounts received on disposals	0	0
8. Deduct amortization of premium and mortgage interest points and commitment fees	0	0
9. Total foreign exchange change in book value/recorded investment excluding accrued interest	0	0
10. Deduct current year's other than temporary impairment recognized	0	0
11. Book value/recorded investment excluding accrued interest at end of current period (Lines 1+2+3+4+5+6-7-8+9-10)	2,881,250	0
12. Total valuation allowance	0	0
13. Subtotal (Line 11 plus Line 12)	2,881,250	0
14. Deduct total nonadmitted amounts	0	0
15. Statement value at end of current period (Line 13 minus Line 14)	2,881,250	0

SCHEDULE BA - VERIFICATION

Other Long-Term Invested Assets

	1 Year to Date	2 Prior Year Ended December 31
1. Book/adjusted carrying value, December 31 of prior year		
2. Cost of acquired:		
2.1 Actual cost at time of acquisition		
2.2 Additional investment made after acquisition		
3. Capitalized deferred interest and other		
4. Accrual of discount		
5. Unrealized valuation increase/(decrease)		
6. Total gain (loss) on disposals		
7. Deduct amounts received on disposals		
8. Deduct amortization of premium and depreciation		
9. Total foreign exchange change in book/adjusted carrying value		
10. Deduct current year's other than temporary impairment recognized		
11. Book/adjusted carrying value at end of current period (Lines 1+2+3+4+5+6-7-8+9-10)		
12. Deduct total nonadmitted amounts		
13. Statement value at end of current period (Line 11 minus Line 12)		

NONE

SCHEDULE D - VERIFICATION

Bonds and Stocks

	1 Year to Date	2 Prior Year Ended December 31
1. Book/adjusted carrying value of bonds and stocks, December 31 of prior year	10,199,260	15,342,146
2. Cost of bonds and stocks acquired	126,404,956	0
3. Accrual of discount	121,636	25,910
4. Unrealized valuation increase/(decrease)	0	0
5. Total gain (loss) on disposals	(1,385)	0
6. Deduct consideration for bonds and stocks disposed of	2,061,700	5,161,773
7. Deduct amortization of premium	34,113	7,023
8. Total foreign exchange change in book/adjusted carrying value	0	0
9. Deduct current year's other than temporary impairment recognized	0	0
10. Total investment income recognized as a result of prepayment penalties and/or acceleration fees	0	0
11. Book/adjusted carrying value at end of current period (Lines 1+2+3+4+5-6-7+8-9+10)	134,628,654	10,199,260
12. Deduct total nonadmitted amounts	0	0
13. Statement value at end of current period (Line 11 minus Line 12)	134,628,654	10,199,260

STATEMENT AS OF SEPTEMBER 30, 2024 OF THE Aetna Better Health of Michigan Inc.

SCHEDULE D - PART 1B

Showing the Acquisitions, Dispositions and Non-Trading Activity
During the Current Quarter for all Bonds and Preferred Stock by NAIC Designation

NAIC Designation	1 Book/Adjusted Carrying Value Beginning of Current Quarter	2 Acquisitions During Current Quarter	3 Dispositions During Current Quarter	4 Non-Trading Activity During Current Quarter	5 Book/Adjusted Carrying Value End of First Quarter	6 Book/Adjusted Carrying Value End of Second Quarter	7 Book/Adjusted Carrying Value End of Third Quarter	8 Book/Adjusted Carrying Value December 31 Prior Year
BONDS								
1. NAIC 1 (a)	198,673,357	754,554,360	805,747,992	1,756,929	169,251,936	198,673,357	149,236,654	30,433,142
2. NAIC 2 (a)	34,086,119	27,798,696	0	62,277	2,764,773	34,086,119	61,947,092	1,763,414
3. NAIC 3 (a)	0	0	0	0	0	0	0	0
4. NAIC 4 (a)	0	0	0	0	0	0	0	0
5. NAIC 5 (a)	0	0	0	0	0	0	0	0
6. NAIC 6 (a)	0	0	0	0	0	0	0	0
7. Total Bonds	232,759,476	782,353,056	805,747,992	1,819,206	172,016,709	232,759,476	211,183,746	32,196,556
PREFERRED STOCK								
8. NAIC 1	0	0	0	0	0	0	0	0
9. NAIC 2	0	0	0	0	0	0	0	0
10. NAIC 3	0	0	0	0	0	0	0	0
11. NAIC 4	0	0	0	0	0	0	0	0
12. NAIC 5	0	0	0	0	0	0	0	0
13. NAIC 6	0	0	0	0	0	0	0	0
14. Total Preferred Stock	0	0	0	0	0	0	0	0
15. Total Bonds and Preferred Stock	232,759,476	782,353,056	805,747,992	1,819,206	172,016,709	232,759,476	211,183,746	32,196,556

(a) Book/Adjusted Carrying Value column for the end of the current reporting period includes the following amount of short-term and cash equivalent bonds by NAIC designation:

NAIC 1 \$ 76,555,093 ; NAIC 2 \$ 0 ; NAIC 3 \$ 0 ; NAIC 4 \$ 0 ; NAIC 5 \$ 0 ; NAIC 6 \$ 0

S102

Schedule DA - Part 1 - Short-Term Investments

N O N E

Schedule DA - Verification - Short-Term Investments

N O N E

Schedule DB - Part A - Verification - Options, Caps, Floors, Collars, Swaps and Forwards

N O N E

Schedule DB - Part B - Verification - Futures Contracts

N O N E

Schedule DB - Part C - Section 1 - Replication (Synthetic Asset) Transactions (RSATs) Open

N O N E

Schedule DB-Part C-Section 2-Reconciliation of Replication (Synthetic Asset) Transactions Open

N O N E

Schedule DB - Verification - Book/Adjusted Carrying Value, Fair Value and Potential Exposure of
Derivatives

N O N E

SCHEDULE E - PART 2 - VERIFICATION

(Cash Equivalents)

	1	2
	Year To Date	Prior Year Ended December 31
1. Book/adjusted carrying value, December 31 of prior year	21,999,279	174,716,575
2. Cost of cash equivalents acquired	2,801,663,909	3,366,566,463
3. Accrual of discount	5,456,302	7,321,428
4. Unrealized valuation increase/(decrease)	0	0
5. Total gain (loss) on disposals	257	4,789
6. Deduct consideration received on disposals	2,752,563,326	3,526,609,976
7. Deduct amortization of premium	0	0
8. Total foreign exchange change in book/adjusted carrying value	0	0
9. Deduct current year's other than temporary impairment recognized	0	0
10. Book/adjusted carrying value at end of current period (Lines 1+2+3+4+5-6-7+8-9)	76,556,421	21,999,279
11. Deduct total nonadmitted amounts	0	0
12. Statement value at end of current period (Line 10 minus Line 11)	76,556,421	21,999,279

STATEMENT AS OF SEPTEMBER 30, 2024 OF THE Aetna Better Health of Michigan Inc.

SCHEDULE A - PART 2

Showing All Real Estate ACQUIRED AND ADDITIONS MADE During the Current Quarter

1 Description of Property	Location		4 Date Acquired	5 Name of Vendor	6 Actual Cost at Time of Acquisition	7 Amount of Encumbrances	8 Book/Adjusted Carrying Value Less Encumbrances	9 Additional Investment Made After Acquisition
	2 City	3 State						
NONE								
0399999 - Totals								

SCHEDULE A - PART 3

Showing All Real Estate DISPOSED During the Quarter, Including Payments During the Final Year on "Sales Under Contract"

1 Description of Property	Location		4 Disposal Date	5 Name of Purchaser	6 Actual Cost	7 Expended for Additions, Permanent Improvements and Changes in Encumbrances	8 Book/Adjusted Carrying Value Less Encumbrances Prior Year	Change in Book/Adjusted Carrying Value Less Encumbrances					14 Book/Adjusted Carrying Value Less Encumbrances on Disposal	15 Amounts Received During Year	16 Foreign Exchange Gain (Loss) on Disposal	17 Realized Gain (Loss) on Disposal	18 Total Gain (Loss) on Disposal	19 Gross Income Earned Less Interest Incurred on Encumbrances	20 Taxes, Repairs and Expenses Incurred
	2 City	3 State						9 Current Year's Depreciation	10 Current Year's Other-Than-Temporary Impairment Recognized	11 Current Year's Change in Encumbrances	12 Total Change in Book/Adjusted Carrying Value (11-9-10)	13 Total Foreign Exchange Change in Book/Adjusted Carrying Value							
NONE																			
0399999 - Totals																			

E01

STATEMENT AS OF SEPTEMBER 30, 2024 OF THE Aetna Better Health of Michigan Inc.

SCHEDULE B - PART 2

Showing All Mortgage Loans ACQUIRED AND ADDITIONS MADE During the Current Quarter

1 Loan Number	2 Location		3 State	4 Loan Type	5 Date Acquired	6 Rate of Interest	7 Actual Cost at Time of Acquisition	8 Additional Investment Made After Acquisition	9 Value of Land and Buildings
	City								
1004693	HEMET		CA		09/06/2024	6.450	1,500,000	0	3,100,000
0599999. Mortgages in good standing - Commercial mortgages-all other							1,500,000	0	3,100,000
0899999. Total Mortgages in good standing							1,500,000	0	3,100,000
1699999. Total - Restructured Mortgages							0	0	0
2499999. Total - Mortgages with overdue interest over 90 days							0	0	0
3299999. Total - Mortgages in the process of foreclosure							0	0	0
3399999 - Totals							1,500,000	0	3,100,000

SCHEDULE B - PART 3

Showing All Mortgage Loans DISPOSED, Transferred or Repaid During the Current Quarter

1 Loan Number	2 Location		4 Loan Type	5 Date Acquired	6 Disposal Date	7 Book Value/Recorded Investment Excluding Accrued Interest Prior Year	8-13 Change in Book Value/Recorded Investment						14 Book Value/Recorded Investment Excluding Accrued Interest on Disposal	15 Consid-eration	16 Foreign Exchange Gain (Loss) on Disposal	17 Realized Gain (Loss) on Disposal	18 Total Gain (Loss) on Disposal
	City	State					8 Unrealized Valuation Increase/ (Decrease)	9 Current Year's (Amortization) /Accretion	10 Current Year's Other-Than-Temporary Impairment Recognized	11 Capitalized Deferred Interest and Other	12 Total Change in Book Value (8+9-10+11)	13 Total Foreign Exchange Change in Book Value					
NONE																	
0599999 - Totals																	

SCHEDULE BA - PART 2

Showing Other Long-Term Invested Assets ACQUIRED AND ADDITIONS MADE During the Current Quarter

1 CUSIP Identification	2 Name or Description	Location		5 Name of Vendor or General Partner	6 NAIC Designation, NAIC Designation Modifier and SVO Admini- strative Symbol	7 Date Originally Acquired	8 Type and Strategy	9 Actual Cost at Time of Acquisition	10 Additional Investment Made After Acquisition	11 Amount of Encumbrances	12 Commitment for Additional Investment	13 Percentage of Ownership
		3 City	4 State									
NONE												
6299999 - Totals												XXX

SCHEDULE BA - PART 3

Showing Other Long-Term Invested Assets DISPOSED, Transferred or Repaid During the Current Quarter

1 CUSIP Identification	2 Name or Description	Location		5 Name of Purchaser or Nature of Disposal	6 Date Originally Acquired	7 Disposal Date	8 Book/ Adjusted Carrying Value Less Encum- brances, Prior Year	Change in Book/Adjusted Carrying Value						15 Book/ Adjusted Carrying Value Less Encum- brances on Disposal	16 Consid- eration	17 Foreign Exchange Gain (Loss) on Disposal	18 Realized Gain (Loss) on Disposal	19 Total Gain (Loss) on Disposal	20 Invest- ment Income
		3 City	4 State					9 Unrealized Valuation Increase/ (De- crease)	10 Current Year's (Depre- ciation) or (Amorti- zation)/ Accretion	11 Current Year's Other Than Tempor- ary Impair- ment Recog- nized	12 Capital- ized Deferred Interest and Other	13 Total Change in Book/ Adjusted Carrying Value (9+10- 11+12)	14 Total Foreign Exchange Change in Book/ Adjusted Carrying Value						
NONE																			
6299999 - Totals																			

STATEMENT AS OF SEPTEMBER 30, 2024 OF THE Aetna Better Health of Michigan Inc.

SCHEDULE D - PART 3

Show All Long-Term Bonds and Stock Acquired During the Current Quarter

1	2	3	4	5	6	7	8	9	10
CUSIP Identification	Description	Foreign	Date Acquired	Name of Vendor	Number of Shares of Stock	Actual Cost	Par Value	Paid for Accrued Interest and Dividends	NAIC Designation, NAIC Designation Modifier and SVO Administrative Symbol
00175M-BQ-2	AMERICAN MONEY MANAGEMENT CORP SERIES 14-15A CLASS BR3 7.213% 01/15/32		08/09/2024	DEUTSCHE BANK		1,001,250	1,000,000	5,610	1.B FE
00206R-HJ-4	AT&T CORP SR UNSECURED 4.350% 03/01/29		07/23/2024	MIZUHO SECURITIES USA		978,340	1,000,000	17,279	2.B FE
00846U-AQ-4	AGILENT TECHNOLOGIES INC SR UNSECURED 4.200% 09/09/27		09/04/2024	WACHOVIA		998,680	1,000,000		2.A FE
023135-BC-9	AMAZON.COM INC SR UNSECURED 3.150% 08/22/27		09/05/2024	CHASE SECURITIES		1,471,680	1,500,000	1,838	1.E FE
023135-BY-1	AMAZON.COM INC SR UNSECURED 1.650% 05/12/28		09/20/2024	Stifel Nicolaus & Co.		928,990	1,000,000	6,004	1.D FE
025816-DL-0	AMERICAN EXPRESS SR UNSECURED 6.338% 10/30/26		08/06/2024	CHASE SECURITIES		1,016,580	1,000,000	17,077	1.F FE
025816-DV-8	AMERICAN EXPRESS SR UNSECURED 5.043% 07/26/28		07/22/2024	MORGAN STANLEY		1,000,000	1,000,000		1.F FE
02582J-KF-6	AMERICAN EXPRESS CREDIT ACCOUN SERIES 24-2 CLASS A 5.240% 04/15/31		07/18/2024	MIZUHO SECURITIES USA		2,061,641	2,000,000	1,164	1.A FE
02665W-FL-0	AMERICAN HONDA FINANCE SR UNSECURED 5.050% 07/10/31		07/08/2024	BANC AMERICA		999,710	1,000,000		1.G FE
035240-AQ-3	ANHEUSER-BUSCH INBEV SR UNSECURED 4.750% 01/23/29		08/05/2024	CHASE SECURITIES		1,018,250	1,000,000	1,715	1.G FE
04019H-AS-2	ARES CLO LTD SERIES 22-64A CLASS BR 7.051% 10/22/39		08/08/2024	BARCLAY INVEST - MTN		1,500,000	1,500,000		1.C FE
05565E-CP-8	BMW US CAPITAL LLC SR UNSECURED 4.650% 08/13/26		08/07/2024	BARCLAY INVESTMENTS		1,999,960	2,000,000		1.F FE
06051G-LV-9	BANK OF AMERICA NA SR UNSECURED 5.933% 09/15/27		08/06/2024	CHASE SECURITIES		920,322	900,000	21,062	1.E FE
08181J-AH-5	BENEFIT STREET PARTNERS CLO LT SERIES 18-5BA CLASS A1R 6.812% 07/20/37		08/15/2024	CHASE SECURITIES		1,202,160	1,200,000	14,639	1.A FE
081917-AA-4	BENEFIT STREET PARTNERS CLO LT SERIES 17-12BR CLASS A 6.671% 10/15/37		08/07/2024	WACHOVIA		1,000,000	1,000,000		1.A FE
081917-AC-0	BENEFIT STREET PARTNERS CLO LT SERIES 17-12BR CLASS B 7.001% 10/15/37		08/07/2024	WACHOVIA		500,000	500,000		1.C FE
096630-AE-8	BOARDWALK PIPELINES LLC SR UNSECURED 5.950% 06/01/26		08/06/2024	CHASE SECURITIES		712,166	700,000	7,636	2.C FE
097023-CM-5	BOEING CO SR UNSECURED 2.700% 02/01/27		08/06/2024	CHASE SECURITIES		940,170	1,000,000	450	2.C FE
110122-DD-7	BRISTOL-MYERS SQUIBB SR UNSECURED 3.450% 11/15/27		08/05/2024	Stifel Nicolaus & Co.		972,670	1,000,000	7,763	1.F FE
12513G-BK-4	CDW LLC / CDW FINANCE SR UNSECURED 5.100% 03/01/30		08/12/2024	BOFA SECURITIES INC		998,890	1,000,000		2.C FE
14913U-AF-7	CATERPILLAR FINL SERVICE SR UNSECURED 5.050% 02/27/26		08/06/2024	CHASE SECURITIES		908,865	900,000	20,200	1.F FE
171239-AL-0	CHUBB INA HOLDINGS LLC SR UNSECURED 4.650% 08/15/29		07/29/2024	WACHOVIA		999,040	1,000,000		1.F FE
174610-BH-7	CITIZENS FINANCIAL GROUP SR UNSECURED 5.718% 07/23/32		07/18/2024	MORGAN STANLEY		1,000,000	1,000,000		2.A FE
191216-CR-9	COCA-COLA CO/THE SR UNSECURED 3.370% 03/25/27		09/05/2024	CHASE SECURITIES		989,790	1,000,000	15,094	1.E FE
22822V-BF-7	CROWN CASTLE INTL CORP SR UNSECURED 4.900% 09/01/29		08/01/2024	BOFA SECURITIES INC		997,360	1,000,000		2.B FE
24422E-WP-0	DEERE JOHN CAP CORP SR UNSECURED 4.800% 01/09/26		08/06/2024	CHASE SECURITIES		1,004,520	1,000,000	3,733	1.E FE
25468P-DK-9	DISNEY WALT CO SR UNSECURED 3.000% 02/13/26		08/06/2024	CHASE SECURITIES		977,550	1,000,000	14,500	1.G FE
29003M-AN-7	ELMWOOD CLO 18 LTD SERIES 22-5A CLASS ARR 6.646% 07/17/37		08/06/2024	Citigroup Global Markets Inc		1,500,000	1,500,000		1.A FE
29336T-AD-2	ENLINK MIDSTREAM LLC SR UNSECURED 6.500% 09/01/30		08/29/2024	MIZUHO SECURITIES USA		1,071,290	1,000,000	32,319	2.C FE
29670G-AJ-1	ESSENTIAL UTILITIES INC SR UNSECURED 4.800% 08/15/27		09/05/2024	Various		2,517,400	2,500,000	4,200	2.B FE
36266G-AA-5	GE HEALTHCARE TECH INC SR UNSECURED 4.800% 08/14/29		08/07/2024	BOFA SECURITIES INC		998,810	1,000,000		2.B FE
369550-AZ-1	GENERAL DYNAMICS CORP SR UNSECURED 2.625% 11/15/27		08/05/2024	Stifel Nicolaus & Co.		949,210	1,000,000	5,906	1.F FE
369550-BL-1	GENERAL DYNAMICS CORP SR UNSECURED 3.500% 04/01/27		08/06/2024	CHASE SECURITIES		979,860	1,000,000	12,250	1.F FE
37045X-EF-9	GENERAL MOTORS FINL CO SR UNSECURED 5.400% 04/06/26		08/06/2024	CHASE SECURITIES		1,010,290	1,000,000	18,150	2.B FE
38141G-B2-9	GOLDMAN SACHS GROUP SR UNSECURED 5.049% 07/23/30		07/17/2024	MORGAN STANLEY		998,340	1,000,000		1.F FE
38151L-AF-7	GOLDMAN SACHS BANK USA SR UNSECURED 5.283% 03/18/27		07/02/2024	GOLDMAN SACHS & CO		1,995,000	2,000,000	30,818	1.E FE
404119-CT-4	HCA INC SR UNSECURED 5.450% 04/01/31		08/13/2024	Stifel Nicolaus & Co.		1,027,490	1,000,000	25,888	2.C FE
438516-CY-0	HONEYWELL INTL SR UNSECURED 4.700% 02/01/30		07/29/2024	DEUTSCHE BANK		999,140	1,000,000		1.F FE
438516-CZ-7	HONEYWELL INTL SR UNSECURED 4.750% 02/01/32		07/29/2024	DEUTSCHE BANK		997,070	1,000,000		1.F FE
487836-BX-5	KELLOGG CO SR UNSECURED 2.100% 06/01/30		08/05/2024	DEUTSCHE BANK		880,800	1,000,000	3,792	2.B FE
494553-AD-2	KINDER MORGAN INC SR UNSECURED 5.000% 02/01/29		08/09/2024	Seaport Group		1,010,120	1,000,000	1,528	2.B FE
548661-DP-9	LOWES COMPANIES SR UNSECURED 3.100% 05/03/27		07/24/2024	BOFA SECURITIES INC		955,770	1,000,000	7,061	2.A FE
55819F-AU-5	MADISON PARK FUNDING LTD SERIES 22-55A CLASS BR 6.979% 07/18/37		07/09/2024	NOMURA SECURITIES		1,000,000	1,000,000		1.B FE
55903V-BA-0	WARNERMEDIA HOLDINGS INC SR UNSECURED 3.755% 03/15/27		07/24/2024	Citigroup Global Markets Inc		950,990	1,000,000	13,560	2.C FE
58013M-FB-5	MCDONALDS CORP SR UNSECURED 3.500% 03/01/27		07/03/2024	BANC AMERICA		961,950	1,000,000	12,056	2.A FE
61690U-BB-9	MORGAN STANLEY BANK NA SR UNSECURED 5.504% 05/26/28		07/02/2024	MORGAN STANLEY		1,006,940	1,000,000	5,045	1.D FE
64110L-AZ-9	NETFLIX INC SR UNSECURED 4.900% 08/15/34		07/30/2024	GOLDMAN SACHS & CO		996,140	1,000,000		2.A FE
64130H-AU-5	NEUBERGER BERMAN CLO LTD SERIES 17-24A CLASS AR2 6.639% 10/19/38		08/08/2024	WACHOVIA		1,000,000	1,000,000		1.A FE

E04

STATEMENT AS OF SEPTEMBER 30, 2024 OF THE Aetna Better Health of Michigan Inc.

SCHEDULE D - PART 3

Show All Long-Term Bonds and Stock Acquired During the Current Quarter

1	2	3	4	5	6	7	8	9	10
CUSIP Identification	Description	Foreign	Date Acquired	Name of Vendor	Number of Shares of Stock	Actual Cost	Par Value	Paid for Accrued Interest and Dividends	NAIC Designation, NAIC Designation Modifier and SVO Administrative Symbol
67066G-AF-1	NVIDIA CORP SR UNSECURED 2.850% 04/01/30		07/01/2024	Seaport Group		1,064,902	1,180,000	8,501	1.D FE
67116C-AL-7	OAK HILL CREDIT PARTNERS SERIES 22-13A CLASS AR 6.632% 07/20/37		07/12/2024	BNP PARIBAS		2,000,000	2,000,000	0	1.A FE
674599-EJ-0	OCCIDENTAL PETROLEUM SR UNSECURED 5.200% 08/01/29		07/23/2024	BOFA SECURITIES INC		999,640	1,000,000	0	2.C FE
674599-EK-7	OCCIDENTAL PETROLEUM SR UNSECURED 5.375% 01/01/32		07/23/2024	BOFA SECURITIES INC		999,560	1,000,000	0	2.C FE
693475-BY-0	PNC FINANCIAL SERVICES SR UNSECURED 5.102% 07/23/27		07/18/2024	PNC CAP MKTS		1,000,000	1,000,000	0	1.G FE
720186-AR-6	PIEDMONT NATURAL GAS CO SR UNSECURED 5.100% 02/15/35		08/12/2024	TD Securities (USA)		999,430	1,000,000	0	2.A FE
74736K-AH-4	CORVO INC SR UNSECURED 4.375% 10/15/29		07/03/2024	Stifel Nicolaus & Co.		943,440	1,000,000	9,722	2.C FE
86217R-AL-2	STORM KING PARK CLO LTD SERIES 22-1A CLASS AR 6.661% 10/15/37		09/17/2024	Citigroup Global Markets Inc		1,000,000	1,000,000	0	1.A FE
871829-BQ-9	SYSCO CORP SR UNSECURED 2.450% 12/14/31		07/10/2024	Stifel Nicolaus & Co.		833,360	1,000,000	1,838	2.B FE
89788M-AT-9	TRUIST FINANCIAL CORP SR UNSECURED 5.153% 08/05/32		08/01/2024	SUNTRUST CAP MARKETS		1,000,000	1,000,000	0	1.G FE
90353T-AN-0	UBER TECHNOLOGIES INC SR UNSECURED 4.300% 01/15/30		09/04/2024	MORGAN STANLEY		999,670	1,000,000	0	2.B FE
911365-BQ-6	UNITED RENTALS INC 1ST LIEN 6.000% 12/15/29		08/09/2024	WACHOVIA		1,017,500	1,000,000	9,500	2.C FE
91159H-JS-0	US BANCORP SR UNSECURED 5.100% 07/23/30		07/22/2024	Royal Bank and Trust		499,650	500,000	0	1.F FE
91324P-FF-4	UNITEDHEALTH GROUP INC SR UNSECURED 4.750% 07/15/26		07/23/2024	WACHOVIA		998,320	1,000,000	0	1.F FE
96337R-AA-0	WHISTLER PIPELINE LLC SR UNSECURED 5.400% 09/30/29		07/24/2024	CHASE SECURITIES		999,460	1,000,000	0	2.C FE
06368L-BK-5	BANK OF MONTREAL SR UNSECURED 4.560% 09/10/27	A.	09/03/2024	BMO Capital Mkts.		2,000,000	2,000,000	0	1.F FE
05964H-BG-9	BANCO SANTANDER SA SR PREFERRED 5.439% 07/15/31	D.	07/08/2024	SANTANDER US CAPITAL MKTSS LLC		1,000,000	1,000,000	0	1.F FE
251526-CX-5	DEUTSCHE BANK NY SR NON PREFERRED 4.990% 09/11/30	D.	09/04/2024	DEUTSCHE BANK		1,000,000	1,000,000	0	2.A FE
404280-DZ-9	HSBC HOLDINGS PLC SR UNSECURED 5.887% 08/14/27	D.	08/06/2024	CHASE SECURITIES		1,020,190	1,000,000	28,290	1.G FE
1109999999	Subtotal - Bonds - Industrial and Miscellaneous (Unaffiliated)					73,280,296	73,880,000	386,188	XXX
780082-AD-5	ROYAL BANK OF CANADA SUBORDINATED 4.650% 01/27/26	A.	08/06/2024	CHASE SECURITIES		1,895,839	1,900,000	2,454	1.G FE
1309999999	Subtotal - Bonds - Hybrid Securities					1,895,839	1,900,000	2,454	XXX
2509999997	Total - Bonds - Part 3					75,176,135	75,780,000	388,642	XXX
2509999998	Total - Bonds - Part 5					XXX	XXX	XXX	XXX
2509999999	Total - Bonds					75,176,135	75,780,000	388,642	XXX
4509999997	Total - Preferred Stocks - Part 3					0	XXX	0	XXX
4509999998	Total - Preferred Stocks - Part 5					XXX	XXX	XXX	XXX
4509999999	Total - Preferred Stocks					0	XXX	0	XXX
5989999997	Total - Common Stocks - Part 3					0	XXX	0	XXX
5989999998	Total - Common Stocks - Part 5					XXX	XXX	XXX	XXX
5989999999	Total - Common Stocks					0	XXX	0	XXX
5999999999	Total - Preferred and Common Stocks					0	XXX	0	XXX
6009999999	Totals					75,176,135	XXX	388,642	XXX

E04.1

STATEMENT AS OF SEPTEMBER 30, 2024 OF THE Aetna Better Health of Michigan Inc.

SCHEDULE D - PART 4

Show All Long-Term Bonds and Stock Sold, Redeemed or Otherwise Disposed of During the Current Quarter

1	2	3	4	5	6	7	8	9	10	Change In Book/Adjusted Carrying Value					16	17	18	19	20	21	22		
										11	12	13	14	15									
CUSIP Identification	Description	Foreign	Disposal Date	Name of Purchaser	Number of Shares of Stock	Consideration	Par Value	Actual Cost	Prior Year Book/Adjusted Carrying Value	Unrealized Valuation Increase/(Decrease)	Current Year's (Amortization)/Accretion	Other Than Temporary Impairment Recognized	Total Change in Book/Adjusted Carrying Value (11 + 12 - 13)	Total Foreign Exchange Change in Book /Adjusted Carrying Value	Book/Adjusted Carrying Value at Disposal Date	Foreign Exchange Gain (Loss) on Disposal	Realized Gain (Loss) on Disposal	Total Gain (Loss) on Disposal	Bond Interest/Stock Dividends Received During Year	Stated Contractual Maturity Date	NAIC Designation, NAIC Designation Modifier and SVO Administrative Symbol		
361767-UT-0	GOVT NATL MITGE ASSN 11 POOL BF1494 3.500% 01/20/48		09/01/2024	Paydown		10,566	10,566	10,574	10,570	0	(4)	0	(4)	0	10,566	0	0	0	247	01/20/2048	1.A		
0109999999. Subtotal - Bonds - U.S. Governments						10,566	10,566	10,574	10,570	0	(4)	0	(4)	0	10,566	0	0	0	247	XXX	XXX		
55819F-AU-5	MADISON PARK FUNDING LTD SERIES 22-55A CLASS BR 6.97% 07/18/37		08/08/2024	MORGAN STANLEY		997,500	1,000,000	1,000,000	0	0	0	0	0	1,000,000	0	(2,500)	(2,500)	4,265	07/18/2037	1.B FE			
1109999999. Subtotal - Bonds - Industrial and Miscellaneous (Unaffiliated)						997,500	1,000,000	1,000,000	0	0	0	0	0	1,000,000	0	(2,500)	(2,500)	4,265	XXX	XXX			
2509999997. Total - Bonds - Part 4						1,008,066	1,010,566	1,010,574	10,570	0	(4)	0	(4)	0	1,010,566	0	(2,500)	(2,500)	4,512	XXX	XXX		
2509999998. Total - Bonds - Part 5						XXX	XXX	XXX	XXX	XXX	XXX	XXX	XXX	XXX	XXX	XXX	XXX	XXX	XXX	XXX	XXX	XXX	
2509999999. Total - Bonds						1,008,066	1,010,566	1,010,574	10,570	0	(4)	0	(4)	0	1,010,566	0	(2,500)	(2,500)	4,512	XXX	XXX		
4509999997. Total - Preferred Stocks - Part 4						0	XXX	0	0	0	0	0	0	0	0	0	0	0	0	0	0	XXX	XXX
4509999998. Total - Preferred Stocks - Part 5						XXX	XXX	XXX	XXX	XXX	XXX	XXX	XXX	XXX	XXX	XXX	XXX	XXX	XXX	XXX	XXX	XXX	XXX
4509999999. Total - Preferred Stocks						0	XXX	0	0	0	0	0	0	0	0	0	0	0	0	0	0	XXX	XXX
5989999997. Total - Common Stocks - Part 4						0	XXX	0	0	0	0	0	0	0	0	0	0	0	0	0	0	XXX	XXX
5989999998. Total - Common Stocks - Part 5						XXX	XXX	XXX	XXX	XXX	XXX	XXX	XXX	XXX	XXX	XXX	XXX	XXX	XXX	XXX	XXX	XXX	XXX
5989999999. Total - Common Stocks						0	XXX	0	0	0	0	0	0	0	0	0	0	0	0	0	0	XXX	XXX
5999999999. Total - Preferred and Common Stocks						0	XXX	0	0	0	0	0	0	0	0	0	0	0	0	0	0	XXX	XXX
6009999999 - Totals						1,008,066	XXX	1,010,574	10,570	0	(4)	0	(4)	0	1,010,566	0	(2,500)	(2,500)	4,512	XXX	XXX		

E05

Schedule DB - Part A - Section 1 - Options, Caps, Floors, Collars, Swaps and Forwards Open

N O N E

Schedule DB - Part B - Section 1 - Futures Contracts Open

N O N E

Schedule DB - Part B - Section 1B - Brokers with whom cash deposits have been made

N O N E

Schedule DB - Part D - Section 1 - Counterparty Exposure for Derivative Instruments Open

N O N E

Schedule DB - Part D-Section 2 - Collateral for Derivative Instruments Open - Pledged By

N O N E

Schedule DB - Part D-Section 2 - Collateral for Derivative Instruments Open - Pledged To

N O N E

Schedule DB - Part E - Derivatives Hedging Variable Annuity Guarantees

N O N E

Schedule DL - Part 1 - Reinvested Collateral Assets Owned

N O N E

Schedule DL - Part 2 - Reinvested Collateral Assets Owned

N O N E

SCHEDULE E - PART 1 - CASH

Month End Depository Balances

1 Depository	2 Code	3 Rate of Interest	4 Amount of Interest Received During Current Quarter	5 Amount of Interest Accrued at Current Statement Date	Book Balance at End of Each Month During Current Quarter			9 *
					6 First Month	7 Second Month	8 Third Month	
Bank of America Charlotte, NC	0.000	0	0	1,407,936	1,175,834	5,600,317	.XXX.
Citi Bank New Castle, DE	0.000	0	0	457,123	518,351	425,400	.XXX.
0199998. Deposits in ... 0 depositories that do not exceed the allowable limit in any one depository (See instructions) - Open Depositories	XXX	XXX	0	0	0	0	0	XXX
0199999. Totals - Open Depositories	XXX	XXX	0	0	1,865,059	1,694,185	6,025,717	XXX
0299998. Deposits in ... 0 depositories that do not exceed the allowable limit in any one depository (See instructions) - Suspended Depositories	XXX	XXX	0	0	0	0	0	XXX
0299999. Totals - Suspended Depositories	XXX	XXX	0	0	0	0	0	XXX
0399999. Total Cash on Deposit	XXX	XXX	0	0	1,865,059	1,694,185	6,025,717	XXX
0499999. Cash in Company's Office	XXX	XXX	XXX	XXX	0	0	0	XXX
.....
.....
.....
.....
.....
.....
.....
.....
.....
.....
.....
.....
0599999. Total - Cash	XXX	XXX	0	0	1,865,059	1,694,185	6,025,717	XXX

STATEMENT AS OF SEPTEMBER 30, 2024 OF THE Aetna Better Health of Michigan Inc.

SCHEDULE E - PART 2 - CASH EQUIVALENTS

Show Investments Owned End of Current Quarter

1	2	3	4	5	6	7	8	9
CUSIP	Description	Code	Date Acquired	Rate of Interest	Maturity Date	Book/Adjusted Carrying Value	Amount of Interest Due and Accrued	Amount Received During Year
0109999999	Total - U.S. Government Bonds					0	0	0
0309999999	Total - All Other Government Bonds					0	0	0
0509999999	Total - U.S. States, Territories and Possessions Bonds					0	0	0
0709999999	Total - U.S. Political Subdivisions Bonds					0	0	0
0909999999	Total - U.S. Special Revenues Bonds					0	0	0
	CONL RUBBER COP AMERICA CP 3(a)3		09/24/2024	5.000	10/09/2024	4,994,439	0	4,856
	ENERGY CORP CP 4(2) 144A		08/02/2024	5.400	10/31/2024	907,859	0	8,171
	EVERGY KANSAS CENTRAL CP 4(2) 144A		09/26/2024	4.920	10/08/2024	6,493,777	0	4,437
	HP INC CP 4(2) 144A		09/25/2024	4.920	10/04/2024	5,056,924	0	4,147
	INTERCONTINENTALEXCHANGE INC CP 4(2) 144A		09/23/2024	4.960	10/11/2024	4,993,104	0	5,504
	INTERCONTINENTALEXCHANGE INC CP 4(2) 144A		09/26/2024	4.950	10/16/2024	6,615,318	0	4,548
	L3HARRIS TECHNOLOGIES IN CP 4(2) 144A		08/30/2024	5.410	10/03/2024	5,219,423	0	25,100
	MICROCHIP TECHNOLOGY INC CP 4(2) 144A		09/27/2024	4.950	11/08/2024	3,257,879	0	1,792
	MOHAWK INDUSTRIES INC CP 4(2) 144A		09/27/2024	4.920	10/25/2024	4,983,591	0	2,724
	MOSAIC CO CP 4(2) 144A		09/25/2024	4.940	10/10/2024	4,993,820	0	4,112
	ONE GAS INC CP 4(2) 144A		09/24/2024	4.960	10/15/2024	5,820,740	0	5,614
	SPIRE INC CP 4(2) 144A		09/19/2024	5.000	10/16/2024	4,982,580	0	8,304
	SPIRE INC CP 4(2) 144A		09/23/2024	5.000	10/21/2024	4,986,096	0	5,540
	UNION ELECTRIC CO CP 3(A)3		09/27/2024	4.900	10/07/2024	1,995,368	0	1,086
	VW CREDIT INC CP 4(2) 144A		09/23/2024	4.980	10/22/2024	11,254,175	0	12,455
1019999999	Subtotal - Bonds - Industrial and Miscellaneous (Unaffiliated) - Issuer Obligations					76,555,093	0	98,390
1109999999	Total - Industrial and Miscellaneous (Unaffiliated) Bonds					76,555,093	0	98,390
1309999999	Total - Hybrid Securities					0	0	0
1509999999	Total - Parent, Subsidiaries and Affiliates Bonds					0	0	0
1909999999	Subtotal - Unaffiliated Bank Loans					0	0	0
2419999999	Total - Issuer Obligations					76,555,093	0	98,390
2429999999	Total - Residential Mortgage-Backed Securities					0	0	0
2439999999	Total - Commercial Mortgage-Backed Securities					0	0	0
2449999999	Total - Other Loan-Backed and Structured Securities					0	0	0
2459999999	Total - SVO Identified Funds					0	0	0
2469999999	Total - Affiliated Bank Loans					0	0	0
2479999999	Total - Unaffiliated Bank Loans					0	0	0
2509999999	Total Bonds					76,555,093	0	98,390
60934N-50-0	FEDERATED INVESTORS INC TREASURY OBLIGATION FUND		09/30/2024	0.000		1,328	17	42
60934N-50-0	FEDERATED INVESTORS INC TREASURY OBLIGATION FUND		03/01/2024	0.000		0	0	0
60934N-50-0	FEDERATED INVESTORS INC TREASURY OBLIGATION FUND		06/03/2024	0.000		0	0	0
8209999999	Subtotal - Exempt Money Market Mutual Funds - as Identified by the SVO					1,328	17	42
8609999999	Total Cash Equivalents					76,556,421	17	98,432

E14