



HEALTH QUARTERLY STATEMENT

AS OF SEPTEMBER 30, 2024
OF THE CONDITION AND AFFAIRS OF THE

Priority Health

NAIC Group Code 3383 3383 NAIC Company Code 95561 Employer's ID Number 38-2715520
(Current) (Prior)

Organized under the Laws of Michigan, State of Domicile or Port of Entry MI

Country of Domicile United States of America

Licensed as business type: Health Maintenance Organization

Is HMO Federally Qualified? Yes [] No [X]

Incorporated/Organized 03/07/1986 Commenced Business 10/15/1986

Statutory Home Office 1231 East Beltline NE, Grand Rapids, MI, US 49525-4501
(Street and Number) (City or Town, State, Country and Zip Code)

Main Administrative Office 1231 East Beltline NE
(Street and Number)
Grand Rapids, MI, US 49525-4501, 616-464-8931
(City or Town, State, Country and Zip Code) (Area Code) (Telephone Number)

Mail Address 1231 East Beltline NE, Grand Rapids, MI, US 49525-4501
(Street and Number or P.O. Box) (City or Town, State, Country and Zip Code)

Primary Location of Books and Records 1231 East Beltline NE
(Street and Number)
Grand Rapids, MI, US 49525-4501, 616-464-8131
(City or Town, State, Country and Zip Code) (Area Code) (Telephone Number)

Internet Website Address www.priorityhealth.com

Statutory Statement Contact Stephanie Savic, 616-464-8205
(Name) (Area Code) (Telephone Number)
stephanie.savic@corewellhealth.org, 616-942-7916
(E-mail Address) (FAX Number)

OFFICERS

President / Chief Executive Officer Praveen Gope Thadani Secretary Kimberly Lynn Thomas
Treasurer / Chief Financial Officer Nicholas Patrick Gates

OTHER

DIRECTORS OR TRUSTEES

<u>Matthew Elson Cox</u>	<u>Christina Michelle Freese Decker</u>	<u>Richard Lee DeVore</u>
<u>Doug Allen Dozeman</u>	<u>Linda Hughley Gillum</u>	<u>Ann Mutzabaugh Harten</u>
<u>Joshua William Hulst #</u>	<u>Birgit Maria Klohs</u>	<u>Howard Neal Morof</u>
<u>Edwin Anders Ness</u>	<u>Ora Hirsch Pescovitz</u>	<u>Garrick John Rochow</u>
<u>Mina Patel Sooch</u>	<u>Michael Frederic Sytsma</u>	<u>Praveen Gope Thadani</u>
<u>Alicia Margarita Torres</u>	<u>Elaine Coston Wood</u>	

State of Michigan SS:
County of _____

The officers of this reporting entity being duly sworn, each depose and say that they are the described officers of said reporting entity, and that on the reporting period stated above, all of the herein described assets were the absolute property of the said reporting entity, free and clear from any liens or claims thereon, except as herein stated, and that this statement, together with related exhibits, schedules and explanations therein contained, annexed or referred to, is a full and true statement of all the assets and liabilities and of the condition and affairs of the said reporting entity as of the reporting period stated above, and of its income and deductions therefrom for the period ended, and have been completed in accordance with the NAIC Annual Statement Instructions and Accounting Practices and Procedures manual except to the extent that: (1) state law may differ; or, (2) that state rules or regulations require differences in reporting not related to accounting practices and procedures, according to the best of their information, knowledge and belief, respectively. Furthermore, the scope of this attestation by the described officers also includes the related corresponding electronic filing with the NAIC, when required, that is an exact copy (except for formatting differences due to electronic filing) of the enclosed statement. The electronic filing may be requested by various regulators in lieu of or in addition to the enclosed statement.

Praveen Gope Thadani
President

Nicholas Patrick Gates
Treasurer

Kimberly Lynn Thomas
Secretary

Subscribed and sworn to before me this _____ day of _____

- a. Is this an original filing? Yes [X] No []
- b. If no,
1. State the amendment number.....
 2. Date filed
 3. Number of pages attached.....

STATEMENT AS OF SEPTEMBER 30, 2024 OF THE Priority Health

ASSETS

	Current Statement Date			4 December 31 Prior Year Net Admitted Assets
	1 Assets	2 Nonadmitted Assets	3 Net Admitted Assets (Cols. 1 - 2)	
1. Bonds	634,201,965		634,201,965	621,665,017
2. Stocks:				
2.1 Preferred stocks			0	0
2.2 Common stocks	676,074,097		676,074,097	624,139,435
3. Mortgage loans on real estate:				
3.1 First liens			0	0
3.2 Other than first liens.....			0	0
4. Real estate:				
4.1 Properties occupied by the company (less \$ encumbrances)			0	0
4.2 Properties held for the production of income (less \$ encumbrances)			0	0
4.3 Properties held for sale (less \$ encumbrances)			0	0
5. Cash (\$(87,066,449)), cash equivalents (\$454,671,930) and short-term investments (\$357,488,901)	725,094,381		725,094,381	519,838,606
6. Contract loans (including \$ premium notes)			0	0
7. Derivatives			0	0
8. Other invested assets	6,700,000	6,700,000	0	0
9. Receivables for securities			0	2,000,000
10. Securities lending reinvested collateral assets			0	0
11. Aggregate write-ins for invested assets	0	0	0	0
12. Subtotals, cash and invested assets (Lines 1 to 11)	2,042,070,443	6,700,000	2,035,370,443	1,767,643,058
13. Title plants less \$ charged off (for Title insurers only)			0	0
14. Investment income due and accrued	6,193,083		6,193,083	6,205,148
15. Premiums and considerations:				
15.1 Uncollected premiums and agents' balances in the course of collection	21,155,466	2,976,177	18,179,289	14,848,551
15.2 Deferred premiums, agents' balances and installments booked but deferred and not yet due (including \$ earned but unbilled premiums)			0	0
15.3 Accrued retrospective premiums (\$) and contracts subject to redetermination (\$ 24,546,539)	24,546,539		24,546,539	41,334,866
16. Reinsurance:				
16.1 Amounts recoverable from reinsurers	1,684,935		1,684,935	3,487,226
16.2 Funds held by or deposited with reinsured companies			0	0
16.3 Other amounts receivable under reinsurance contracts	931,000		931,000	931,000
17. Amounts receivable relating to uninsured plans	21,964,536		21,964,536	37,145,011
18.1 Current federal and foreign income tax recoverable and interest thereon			0	0
18.2 Net deferred tax asset			0	0
19. Guaranty funds receivable or on deposit			0	0
20. Electronic data processing equipment and software			0	0
21. Furniture and equipment, including health care delivery assets (\$)			0	0
22. Net adjustment in assets and liabilities due to foreign exchange rates			0	0
23. Receivables from parent, subsidiaries and affiliates	17,713,034		17,713,034	20,412,672
24. Health care (\$170,606,682) and other amounts receivable	180,235,767	9,591,948	170,643,819	183,293,065
25. Aggregate write-ins for other than invested assets	55,439,592	55,439,592	0	0
26. Total assets excluding Separate Accounts, Segregated Accounts and Protected Cell Accounts (Lines 12 to 25)	2,371,934,395	74,707,717	2,297,226,678	2,075,300,597
27. From Separate Accounts, Segregated Accounts and Protected Cell Accounts			0	0
28. Total (Lines 26 and 27)	2,371,934,395	74,707,717	2,297,226,678	2,075,300,597
DETAILS OF WRITE-INS				
1101.				
1102.				
1103.				
1198. Summary of remaining write-ins for Line 11 from overflow page	0	0	0	0
1199. Totals (Lines 1101 through 1103 plus 1198)(Line 11 above)	0	0	0	0
2501. Prepaid expenses	55,439,592	55,439,592	0	0
2502.				
2503.				
2598. Summary of remaining write-ins for Line 25 from overflow page	0	0	0	0
2599. Totals (Lines 2501 through 2503 plus 2598)(Line 25 above)	55,439,592	55,439,592	0	0

STATEMENT AS OF SEPTEMBER 30, 2024 OF THE Priority Health

LIABILITIES, CAPITAL AND SURPLUS

	Current Period			Prior Year
	1 Covered	2 Uncovered	3 Total	4 Total
1. Claims unpaid (less \$ reinsurance ceded)	494,166,554	28,613,283	522,779,837	481,111,233
2. Accrued medical incentive pool and bonus amounts	15,834,533		15,834,533	21,937,457
3. Unpaid claims adjustment expenses	8,890,776	514,794	9,405,570	7,374,655
4. Aggregate health policy reserves, including the liability of \$ for medical loss ratio rebate per the Public Health Service Act	79,475,658		79,475,658	104,540,271
5. Aggregate life policy reserves			0	0
6. Property/casualty unearned premium reserve			0	0
7. Aggregate health claim reserves			0	0
8. Premiums received in advance	35,665,180		35,665,180	25,248,502
9. General expenses due or accrued	47,361,376		47,361,376	39,678,003
10.1 Current federal and foreign income tax payable and interest thereon (including \$ on realized gains (losses))			0	0
10.2 Net deferred tax liability			0	0
11. Ceded reinsurance premiums payable			0	0
12. Amounts withheld or retained for the account of others.....			0	0
13. Remittances and items not allocated	3,110,573		3,110,573	4,038,056
14. Borrowed money (including \$ current) and interest thereon \$ (including \$ current)			0	0
15. Amounts due to parent, subsidiaries and affiliates	10,288,551		10,288,551	5,307,391
16. Derivatives			0	0
17. Payable for securities	5,963,360		5,963,360	1,181,312
18. Payable for securities lending			0	0
19. Funds held under reinsurance treaties (with \$ authorized reinsurers, \$ unauthorized reinsurers and \$ certified reinsurers).....			0	0
20. Reinsurance in unauthorized and certified (\$) companies			0	0
21. Net adjustments in assets and liabilities due to foreign exchange rates			0	0
22. Liability for amounts held under uninsured plans	14,005,921		14,005,921	26,647,177
23. Aggregate write-ins for other liabilities (including \$ current)	0	0	0	0
24. Total liabilities (Lines 1 to 23)	714,762,482	29,128,077	743,890,559	717,064,057
25. Aggregate write-ins for special surplus funds	XXX	XXX	1,000,000	1,000,000
26. Common capital stock	XXX	XXX	8,471	8,471
27. Preferred capital stock	XXX	XXX		
28. Gross paid in and contributed surplus	XXX	XXX	35,821,001	35,821,001
29. Surplus notes	XXX	XXX		
30. Aggregate write-ins for other than special surplus funds	XXX	XXX	0	0
31. Unassigned funds (surplus)	XXX	XXX	1,516,506,647	1,321,407,068
32. Less treasury stock, at cost:				
32.1 shares common (value included in Line 26 \$)	XXX	XXX		
32.2 shares preferred (value included in Line 27 \$)	XXX	XXX		
33. Total capital and surplus (Lines 25 to 31 minus Line 32)	XXX	XXX	1,553,336,119	1,358,236,540
34. Total liabilities, capital and surplus (Lines 24 and 33)	XXX	XXX	2,297,226,678	2,075,300,597
DETAILS OF WRITE-INS				
2301.				
2302.				
2303.				
2398. Summary of remaining write-ins for Line 23 from overflow page	0	0	0	0
2399. Totals (Lines 2301 through 2303 plus 2398)(Line 23 above)	0	0	0	0
2501. Appropriated Retained Earnings	XXX	XXX	1,000,000	1,000,000
2502.	XXX	XXX		
2503.	XXX	XXX		
2598. Summary of remaining write-ins for Line 25 from overflow page	XXX	XXX	0	0
2599. Totals (Lines 2501 through 2503 plus 2598)(Line 25 above)	XXX	XXX	1,000,000	1,000,000
3001.	XXX	XXX		
3002.	XXX	XXX		
3003.	XXX	XXX		
3098. Summary of remaining write-ins for Line 30 from overflow page	XXX	XXX	0	0
3099. Totals (Lines 3001 through 3003 plus 3098)(Line 30 above)	XXX	XXX	0	0

STATEMENT OF REVENUE AND EXPENSES

	Current Year To Date		Prior Year To Date	Prior Year Ended December 31
	1 Uncovered	2 Total	3 Total	4 Total
1. Member Months	XXX	6,955,238	6,788,753	9,065,438
2. Net premium income (including \$ non-health premium income)	XXX	4,389,192,847	4,026,580,602	5,371,088,277
3. Change in unearned premium reserves and reserve for rate credits	XXX	1,053,129	837,603	(2,330,739)
4. Fee-for-service (net of \$ medical expenses)	XXX			
5. Risk revenue	XXX			
6. Aggregate write-ins for other health care related revenues	XXX	2,103,560	1,062,233	1,573,681
7. Aggregate write-ins for other non-health revenues	XXX	0	0	0
8. Total revenues (Lines 2 to 7)	XXX	4,392,349,536	4,028,480,438	5,370,331,219
Hospital and Medical:				
9. Hospital/medical benefits		3,000,714,186	2,677,457,354	3,702,375,588
10. Other professional services		65,861,417	59,715,080	79,717,537
11. Outside referrals		84,831,882	79,164,130	101,860,315
12. Emergency room and out-of-area		159,935,773	143,926,260	197,465,356
13. Prescription drugs		577,287,879	479,589,356	635,383,661
14. Aggregate write-ins for other hospital and medical	0	0	0	0
15. Incentive pool, withhold adjustments and bonus amounts		15,526,462	83,535,301	94,802,900
16. Subtotal (Lines 9 to 15)	0	3,904,157,599	3,523,387,481	4,811,605,357
Less:				
17. Net reinsurance recoveries		4,855,693	4,808,923	4,860,244
18. Total hospital and medical (Lines 16 minus 17)	0	3,899,301,906	3,518,578,558	4,806,745,113
19. Non-health claims (net)				
20. Claims adjustment expenses, including \$ 61,002,693 cost containment expenses		125,193,110	113,337,326	159,077,636
21. General administrative expenses		337,738,733	320,287,188	424,976,139
22. Increase in reserves for life and accident and health contracts (including \$ increase in reserves for life only)				0
23. Total underwriting deductions (Lines 18 through 22)	0	4,362,233,749	3,952,203,072	5,390,798,888
24. Net underwriting gain or (loss) (Lines 8 minus 23)	XXX	30,115,787	76,277,366	(20,467,669)
25. Net investment income earned		50,459,036	42,252,860	57,826,715
26. Net realized capital gains (losses) less capital gains tax of \$		9,070,580	(10,262,287)	36,490,087
27. Net investment gains (losses) (Lines 25 plus 26)	0	59,529,616	31,990,573	94,316,802
28. Net gain or (loss) from agents' or premium balances charged off [(amount recovered \$) (amount charged off \$)]				
29. Aggregate write-ins for other income or expenses	0	0	0	0
30. Net income or (loss) after capital gains tax and before all other federal income taxes (Lines 24 plus 27 plus 28 plus 29)	XXX	89,645,403	108,267,939	73,849,133
31. Federal and foreign income taxes incurred	XXX			
32. Net income (loss) (Lines 30 minus 31)	XXX	89,645,403	108,267,939	73,849,133
DETAILS OF WRITE-INS				
0601. Wellness Revenue	XXX	2,103,560	1,062,233	1,573,681
0602.	XXX			
0603.	XXX			
0698. Summary of remaining write-ins for Line 6 from overflow page	XXX	0	0	0
0699. Totals (Lines 0601 through 0603 plus 0698)(Line 6 above)	XXX	2,103,560	1,062,233	1,573,681
0701.	XXX			
0702.	XXX			
0703.	XXX			
0798. Summary of remaining write-ins for Line 7 from overflow page	XXX	0	0	0
0799. Totals (Lines 0701 through 0703 plus 0798)(Line 7 above)	XXX	0	0	0
1401.				
1402.				
1403.				
1498. Summary of remaining write-ins for Line 14 from overflow page	0	0	0	0
1499. Totals (Lines 1401 through 1403 plus 1498)(Line 14 above)	0	0	0	0
2901.				
2902.				
2903.				
2998. Summary of remaining write-ins for Line 29 from overflow page	0	0	0	0
2999. Totals (Lines 2901 through 2903 plus 2998)(Line 29 above)	0	0	0	0

STATEMENT OF REVENUE AND EXPENSES (Continued)

	1 Current Year to Date	2 Prior Year to Date	3 Prior Year Ended December 31
CAPITAL AND SURPLUS ACCOUNT			
33. Capital and surplus prior reporting year.....	1,358,236,540	1,211,443,847	1,211,443,847
34. Net income or (loss) from Line 32.....	89,645,403	108,267,939	73,849,133
35. Change in valuation basis of aggregate policy and claim reserves.....			
36. Change in net unrealized capital gains (losses) less capital gains tax of \$.....	64,156,363	83,492,537	75,762,620
37. Change in net unrealized foreign exchange capital gain or (loss).....			
38. Change in net deferred income tax.....			
39. Change in nonadmitted assets.....	41,297,813	3,094,700	(14,593,585)
40. Change in unauthorized and certified reinsurance.....	0	0	0
41. Change in treasury stock.....	0	0	0
42. Change in surplus notes.....	0	0	0
43. Cumulative effect of changes in accounting principles.....			
44. Capital Changes:			
44.1 Paid in.....			0
44.2 Transferred from surplus (Stock Dividend).....	0	0	0
44.3 Transferred to surplus.....			
45. Surplus adjustments:			
45.1 Paid in.....	0	(1)	(1)
45.2 Transferred to capital (Stock Dividend).....			
45.3 Transferred from capital.....			
46. Dividends to stockholders.....			
47. Aggregate write-ins for gains or (losses) in surplus.....	0	0	11,774,526
48. Net change in capital & surplus (Lines 34 to 47).....	195,099,579	194,855,175	146,792,693
49. Capital and surplus end of reporting period (Line 33 plus 48)	1,553,336,119	1,406,299,022	1,358,236,540
DETAILS OF WRITE-INS			
4701. Prior Period Adjustment Goodwill Amortization.....			11,774,526
4702.			
4703.			
4798. Summary of remaining write-ins for Line 47 from overflow page.....	0	0	0
4799. Totals (Lines 4701 through 4703 plus 4798)(Line 47 above)	0	0	11,774,526

STATEMENT AS OF SEPTEMBER 30, 2024 OF THE Priority Health

CASH FLOW

	1 Current Year To Date	2 Prior Year To Date	3 Prior Year Ended December 31
Cash from Operations			
1. Premiums collected net of reinsurance	4,388,010,910	4,193,025,903	5,386,449,763
2. Net investment income	49,975,248	40,741,697	56,561,811
3. Miscellaneous income	2,103,560	1,062,233	1,573,681
4. Total (Lines 1 to 3)	4,440,089,718	4,234,829,833	5,444,585,255
5. Benefit and loss related payments	3,803,553,646	3,522,881,872	4,827,321,737
6. Net transfers to Separate Accounts, Segregated Accounts and Protected Cell Accounts			
7. Commissions, expenses paid and aggregate write-ins for deductions450,678,336	.412,164,308	.588,103,538
8. Dividends paid to policyholders			
9. Federal and foreign income taxes paid (recovered) net of \$ tax on capital gains (losses)	0	0	0
10. Total (Lines 5 through 9)	4,254,231,982	3,935,046,180	5,415,425,275
11. Net cash from operations (Line 4 minus Line 10)	185,857,736	299,783,653	29,159,980
Cash from Investments			
12. Proceeds from investments sold, matured or repaid:			
12.1 Bonds	93,965,050	111,654,970	126,885,046
12.2 Stocks	30,000,000	0	19,577,743
12.3 Mortgage loans	0	0	0
12.4 Real estate	0	0	0
12.5 Other invested assets	0	0	0
12.6 Net gains or (losses) on cash, cash equivalents and short-term investments	0	0	(159,824)
12.7 Miscellaneous proceeds	6,782,048	7,572,143	4,800,000
12.8 Total investment proceeds (Lines 12.1 to 12.7)	130,747,098	119,227,113	151,102,965
13. Cost of investments acquired (long-term only):			
13.1 Bonds	108,560,661	147,302,707	153,386,911
13.2 Stocks	6,204,583	4,170,496	29,134,410
13.3 Mortgage loans	0	0	0
13.4 Real estate	0	0	0
13.5 Other invested assets	0	0	0
13.6 Miscellaneous applications	0	0	2,071,392
13.7 Total investments acquired (Lines 13.1 to 13.6)	114,765,244	151,473,203	184,592,713
14. Net increase (or decrease) in contract loans and premium notes	0	0	0
15. Net cash from investments (Line 12.8 minus Line 13.7 and Line 14)	15,981,854	(32,246,090)	(33,489,748)
Cash from Financing and Miscellaneous Sources			
16. Cash provided (applied):			
16.1 Surplus notes, capital notes	0	0	0
16.2 Capital and paid in surplus, less treasury stock	0	(1)	(1)
16.3 Borrowed funds	0	0	0
16.4 Net deposits on deposit-type contracts and other insurance liabilities	0	0	0
16.5 Dividends to stockholders	0	0	0
16.6 Other cash provided (applied)	3,416,185	20,675,696	58,819,247
17. Net cash from financing and miscellaneous sources (Line 16.1 through Line 16.4 minus Line 16.5 plus Line 16.6)	3,416,185	20,675,695	58,819,246
RECONCILIATION OF CASH, CASH EQUIVALENTS AND SHORT-TERM INVESTMENTS			
18. Net change in cash, cash equivalents and short-term investments (Line 11, plus Lines 15 and 17)	205,255,775	288,213,258	54,489,478
19. Cash, cash equivalents and short-term investments:			
19.1 Beginning of year	519,838,606	465,349,128	465,349,128
19.2 End of period (Line 18 plus Line 19.1)	725,094,381	753,562,386	519,838,606

Note: Supplemental disclosures of cash flow information for non-cash transactions:

--	--	--	--

STATEMENT AS OF SEPTEMBER 30, 2024 OF THE Priority Health

EXHIBIT OF PREMIUMS, ENROLLMENT AND UTILIZATION

	1 Total	Comprehensive (Hospital & Medical)		4 Medicare Supplement	5 Vision Only	6 Dental Only	7 Federal Employees Health Benefits Plan	8 Title XVIII Medicare	9 Title XIX Medicaid	10 Credit A&H	11 Disability Income	12 Long-Term Care	13 Other Health	14 Other Non-Health
		2 Individual	3 Group											
Total Members at end of:														
1. Prior Year	761,509	136,437	370,081	17,528	0	0	2,026	235,437	0	0	0	0	0	0
2. First Quarter	775,495	153,370	364,560	16,986	0	0	2,029	238,550	0	0	0	0	0	0
3. Second Quarter	778,050	156,536	361,915	17,140	0	0	1,999	240,460	0	0	0	0	0	0
4. Third Quarter	779,506	156,600	361,077	17,369			2,025	242,435						
5. Current Year	0													
6. Current Year Member Months	6,955,238	1,372,916	3,259,432	153,399			18,070	2,151,421						
Total Member Ambulatory Encounters for Period:														
7. Physician	8,794,707	1,167,276	2,796,355	308,121			17,288	4,505,667						
8. Non-Physician	858,662	113,966	273,019	30,083			1,688	439,906						
9. Total	9,653,369	1,281,242	3,069,374	338,204	0	0	18,976	4,945,573	0	0	0	0	0	0
10. Hospital Patient Days Incurred	422,871	38,360	75,024	16,631			464	292,392						
11. Number of Inpatient Admissions	58,787	6,506	14,826	2,201			236	35,018						
12. Health Premiums Written (a)	4,394,578,615	682,976,871	1,545,666,902	32,327,886			9,766,265	2,123,840,691						
13. Life Premiums Direct	0													
14. Property/Casualty Premiums Written	0													
15. Health Premiums Earned.....	4,395,631,744	682,976,871	1,545,666,902	32,327,886			9,766,265	2,124,893,820						
16. Property/Casualty Premiums Earned	0													
17. Amount Paid for Provision of Health Care Services.....	3,863,736,225	542,488,386	1,372,314,473	27,278,339			8,320,201	1,913,334,826						
18. Amount Incurred for Provision of Health Care Services	3,904,157,599	558,240,033	1,369,882,138	27,235,910			8,469,089	1,940,330,429						

(a) For health premiums written: amount of Medicare Title XVIII exempt from state taxes or fees \$2,123,840,691

UNDERWRITING AND INVESTMENT EXHIBIT

ANALYSIS OF CLAIMS UNPAID - PRIOR YEAR - NET OF REINSURANCE

Line of Business	Claims Paid Year to Date		Liability End of Current Quarter		5 Claims Incurred in Prior Years (Columns 1 + 3)	6 Estimated Claim Reserve and Claim Liability December 31 of Prior Year
	1 On Claims Incurred Prior to January 1 of Current Year	2 On Claims Incurred During the Year	3 On Claims Unpaid Dec. 31 of Prior Year	4 On Claims Incurred During the Year		
1. Comprehensive (hospital and medical) individual	76,082,201	496,037,999	1,122,881	102,834,641	77,205,082	87,676,188
2. Comprehensive (hospital and medical) group	188,762,128	1,261,819,040	5,420,405	184,734,357	194,182,533	195,823,910
3. Medicare Supplement	4,152,014	23,126,325	33,098	5,142,664	4,185,112	5,218,191
4. Vision only					0	0
5. Dental only					0	0
6. Federal Employees Health Benefits Plan	849,021	7,471,180	2,368	682,811	851,389	536,291
7. Title XVIII - Medicare	183,688,956	1,924,317,504	2,561,957	220,244,654	186,250,913	191,856,654
8. Title XIX - Medicaid					0	0
9. Credit A&H					0	0
10. Disability Income					0	0
11. Long-term care					0	0
12. Other health					0	0
13. Health subtotal (Lines 1 to 12)	453,534,320	3,712,772,048	9,140,709	513,639,127	462,675,029	481,111,234
14. Health care receivables (a)		324,199,528			0	0
15. Other non-health					0	0
16. Medical incentive pools and bonus amounts	28,065,235	(6,435,850)	1,215,946	14,618,587	29,281,181	21,937,457
17. Totals (Lines 13 - 14 + 15 + 16)	481,599,555	3,382,136,670	10,356,655	528,257,714	491,956,210	503,048,691

(a) Excludes \$ loans or advances to providers not yet expensed.

NOTES TO FINANCIAL STATEMENTS

NOTE 1 Summary of Significant Accounting Policies and Going Concern

A. Accounting Practices

The accompanying financial statements have been prepared in conformity with accounting practices prescribed or permitted by the Michigan Department of Insurance and Financial Services (DIFS). DIFS requires that insurance contracts domiciled in Michigan prepare their statutory-basis financial statements in accordance with the National Association of Insurance Commissioners' (NAIC) Accounting Practices and Procedures Manual, subject to any deviations prescribed or permitted by DIFS.

	SSAP #	F/S Page	F/S Line #	2024	2023
NET INCOME					
(1) State basis (Page 4, Line 32, Columns 2 & 4)	XXX	XXX	XXX	\$ 89,645,403	\$ 73,849,133
(2) State Prescribed Practices that are an increase/ (decrease) from NAIC SAP:					
(3) State Permitted Practices that are an increase/(decrease) from NAIC SAP:					
(4) NAIC SAP (1-2-3=4)	XXX	XXX	XXX	\$ 89,645,403	\$ 73,849,133
SURPLUS					
(5) State basis (Page 3, Line 33, Columns 3 & 4)	XXX	XXX	XXX	\$ 1,553,336,119	\$ 1,358,236,540
(6) State Prescribed Practices that are an increase/(decrease) from NAIC SAP:					
(7) State Permitted Practices that are an increase/(decrease) from NAIC SAP:					
(8) NAIC SAP (5-6-7=8)	XXX	XXX	XXX	\$ 1,553,336,119	\$ 1,358,236,540

B. Use of Estimates in the Preparation of the Financial Statements

The preparation of financial statements of HMOs requires management to make estimates and assumptions that affect amounts reported in the financial statements and accompanying notes. Such estimates and assumptions could change in the future as more information becomes known, which could impact the amounts reported and disclosed herein.

C. Accounting Policy

(1) Basis for Short-Term Investments

All short-term investments have been classified in accordance with National Association of Insurance Commissioners (NAIC) guidelines and are stated at amortized cost for financial statement disclosure.

(2) Basis for Bonds and Amortization Schedule

Investments in bonds are carried at amortized cost. The cost of bonds is adjusted for amortization of premiums and discounts to maturity using a level-yield method. Realized gains and losses are determined using the specific identification method and are included in operations. The fair value of investments is determined based upon quoted market prices.

(3) Basis for Common Stocks

Investments in Common Stocks are reported at fair market value based upon quoted market prices.

(4) Basis for Preferred Stocks

NOT APPLICABLE

(5) Basis for Mortgage Loans

NOT APPLICABLE

(6) Basis for Loan-Backed Securities and Adjustment Methodology

Loan-backed securities as well as other asset-backed securities are held and are reported at their amortized cost.

(7) Accounting Policies for Investments in Subsidiaries, Controlled and Affiliated Entities

NOT APPLICABLE

(8) Accounting Policies for Investments in Joint Ventures, Partnerships and Limited Liability Entities

NOT APPLICABLE

(9) Accounting Policies for Derivatives

NOT APPLICABLE

(10) Anticipated Investment Income Used in Premium Deficiency Calculation

The Plan utilizes anticipated investment income as a factor in the premium deficiency calculation.

(11) Management's Policies and Methodologies for Estimating Liabilities for Losses and Loss/Claim Adjustment Expenses

Under traditional arrangements, health care costs are recognized as expenses when services are rendered including, based on historical data, an estimate of costs incurred but not reported at the balance sheet date. Under capitation arrangements and risk-savings/sharing programs, health care costs are recognized when accruable under the providers' respective agreements. Adjustments to previously rendered claims reserve estimates are reflected in the statement of operations in the period in which the estimates are revised. Such reserve adjustments consist of restatements of claims estimates and changes in margin associated with these estimates and could be material in the future. Given the nature of the health care costs and provider billing requirements, as defined by the participating providers' agreements, amounts accrued at year-end are paid predominantly in the following year.

(12) Changes in the Capitalization Policy and Predefined Thresholds from Prior Period

The Plan has had no change in capitalization policy.

(13) Method Used to Estimate Pharmaceutical Rebate Receivables

The Plan estimates pharmaceutical rebate receivables based on historic collection experience and reporting provided by pharmacy benefit managers.

D. Going Concern

NONE.

NOTE 2 Accounting Changes and Corrections of Errors

No significant changes.

NOTE 3 Business Combinations and Goodwill

No significant changes.

NOTE 4 Discontinued Operations

No significant changes.

NOTE 5 Investments

NOTES TO FINANCIAL STATEMENTS

- D. Loan-Backed Securities - NOT APPLICABLE
- E. Dollar Repurchase Agreements and/or Securities Lending Transactions
(3) Collateral Received - NOT APPLICABLE
- F. Repurchase Agreements Transactions Accounted for as Secured Borrowing - NOT APPLICABLE
- G. Reverse Repurchase Agreements Transactions Accounted for as Secured Borrowing - NOT APPLICABLE
- H. Repurchase Agreements Transactions Accounted for as a Sale - NOT APPLICABLE
- I. Reverse Repurchase Agreements Transactions Accounted for as a Sale - NOT APPLICABLE
- M. Working Capital Finance Investments
 - 2. Aggregate Maturity Distribution on the Underlying Working Capital Finance Programs - NOT APPLICABLE
 - 3. Any Events of Default or Working Capital Finance Investments - NOT APPLICABLE
- N. Offsetting and Netting of Assets and Liabilities - NOT APPLICABLE
- R. Reporting Entity's Share of Cash Pool by Asset Type - NOT APPLICABLE

NOTE 6 Joint Ventures, Partnerships and Limited Liability Companies

No significant changes.

NOTE 7 Investment Income

No significant changes.

NOTE 8 Derivative Instruments

- A. Derivatives under SSAP No. 86—Derivatives
(8) Total Premium Costs for Contracts - NOT APPLICABLE
- B. Derivatives under SSAP No. 108—Derivative Hedging Variable Annuity Guarantees
(2) Recognition of gains/losses and deferred assets and liabilities - NOT APPLICABLE

NOTE 9 Income Taxes

The Company is exempt from federal income taxes as an organization described under Internal Revenue Code Section 501(C)(4). Therefore, income tax expense has not been recorded.

NOTE 10 Information Concerning Parent, Subsidiaries, Affiliates and Other Related Parties

No significant changes.

NOTE 11 Debt

- B. FHLB (Federal Home Loan Bank) Agreements - NOT APPLICABLE

NOTE 12 Retirement Plans, Deferred Compensation, Postemployment Benefits and Compensated Absences and Other Postretirement Benefit Plans

- A. Defined Benefit Plan - NOT APPLICABLE

NOTE 13 Capital and Surplus, Dividend Restrictions and Quasi-Reorganizations

No significant changes.

NOTE 14 Liabilities, Contingencies and Assessments

- A. Contingent Commitments

The Company has committed to its wholly owned subsidiaries, Priority Health Insurance Company, Inc., Priority Health Choice, Inc., Total Health Care Inc., and Total Health Care USA Inc. to provide additional capital as needed in order for this subsidiary to meet capital requirements as mandated by the regulating authority.

- B. Assessments

The Company incurs an assessment based on certain membership under the Michigan Insurance Provider Assessment (IPA) Act. As the IPA taxes are the Company's responsibility, taxes are recorded under the gross method. The taxes collected and paid are recorded in premium revenue and general administrative expenses, respectively. The Company expensed \$10,947,280 for IPA taxes in 2024. The corresponding liability of \$7,298,186 is recorded in general expenses due or accrued as of September 30, 2024.

NOTE 15 Leases

No significant changes.

NOTE 16 Information About Financial Instruments With Off-Balance Sheet Risk and Financial Instruments With Concentrations of Credit Risk

No significant changes.

NOTE 17 Sale, Transfer and Servicing of Financial Assets and Extinguishments of Liabilities

- B. Transfer and Servicing of Financial Assets - NOT APPLICABLE
- C. Wash Sales - NOT APPLICABLE

NOTE 18 Gain or Loss to the Reporting Entity from Uninsured Plans and the Uninsured Portion of Partially Insured Plans

No significant changes.

NOTES TO FINANCIAL STATEMENTS

NOTE 19 Direct Premium Written/Produced by Managing General Agents/Third Party Administrators

No significant changes.

NOTE 20 Fair Value Measurements

A.

(1) Fair Value Measurements at Reporting Date

Description for each class of asset or liability	(Level 1)	(Level 2)	(Level 3)	Net Asset Value (NAV)	Total
a. Assets at fair value					
Common Stock	\$ 315,839,568	\$ -	\$ -	\$ -	\$ 315,839,568
Total assets at fair value/NAV	\$ 315,839,568	\$ -	\$ -	\$ -	\$ 315,839,568

B. Fair Value Reporting under SSAP 100 and Other Accounting Pronouncements - NOT APPLICABLE

C. Fair Value Level - NOT APPLICABLE

D. Not Practicable to Estimate Fair Value - NOT APPLICABLE

E. NAV Practical Expedient Investments - NOT APPLICABLE

NOTE 21 Other Items

No significant changes.

NOTE 22 Events Subsequent

In 2024, Priority Health entered into a Member Transfer Agreement with Physicians Health Plan of Northern Indiana, Inc. (PHPNI) and its subsidiaries, to acquire the Companies. On November 12, 2024, this transaction was approved by the Indiana Department of Insurance. All parties are actively working to finalize the required closing requirements and an acquisition date of December 1, 2024, is anticipated. Upon closing, Priority Health will become the sole corporate owner of PHPNI.

NOTE 23 Reinsurance

No significant changes.

NOTE 24 Retrospectively Rated Contracts & Contracts Subject to Redetermination

E. Risk Sharing Provisions of the Affordable Care Act

(1) Did the reporting entity write accident and health insurance premium which is subject to the Affordable Care Act risk sharing provisions (YES/NO)? Yes [X] No []

(2) Impact of Risk Sharing Provisions of the Affordable Care Act on Admitted Assets, Liabilities and Revenue for the Current Year Amount

a. Permanent ACA Risk Adjustment Program

Assets

1. Premium adjustments receivable due to ACA Risk Adjustment (including high risk pool payments) \$ -

Liabilities

2. Risk adjustment user fees payable for ACA Risk Adjustment \$ 481,000

3. Premium adjustments payable due to ACA Risk Adjustment (including high risk pool premium) \$ 76,429,000

Operations (Revenue & Expense)

4. Reported as revenue in premium for accident and health contracts (written/collected) due to ACA Risk Adjustment \$ (68,178,000)

5. Reported in expenses as ACA risk adjustment user fees (incurred/paid) \$ 483,000

(3) Roll forward of prior year ACA risk sharing provisions for the following asset (gross of any nonadmission) and liability balances along with the reasons for adjustments to prior year balance.

	Accrued During the Prior Year on Business Written Before December 31 of the Prior Year		Received or Paid as of the Current Year on Business Written Before December 31 of the Prior Year		Differences		Adjustments		Unsettled Balances as of the Reporting Date		
	1	2	3	4	Prior Year Accrued Less Payments (Col 1 - 3)	Prior Year Accrued Less Payments (Col 2 - 4)	To Prior Year Balances	To Prior Year Balances	Cumulative Balance from Prior Years (Col 1-3+7)	Cumulative Balance from Prior Years (Col 2-4+8)	
					5	6	7	8			
	Receivable	Payable	Receivable	Payable	Receivable	Payable	Receivable	Payable	Ref	Receivable	Payable
a. Permanent ACA Risk Adjustment Program											
1. Premium adjustments receivable (including high risk pool payments)	\$ -	\$ -	\$ -	\$ -	\$ -	\$ -	\$ -	\$ -	A	\$ -	\$ -
2. Premium adjustments (payable) (including high risk pool premium)	\$ -	\$ 92,340,000	\$ -	\$ 84,089,000	\$ -	\$ 8,251,000	\$ -	\$ (10,900,000)	B	\$ -	\$(2,649,000)
3. Subtotal ACA Permanent Risk Adjustment Program	\$ -	\$ 92,340,000	\$ -	\$ 84,089,000	\$ -	\$ 8,251,000	\$ -	\$ (10,900,000)		\$ -	\$ (2,649,000)

Explanations of Adjustments

B.
Settlement Finalized

(4) Roll-Forward of Risk Corridors Asset and Liability Balances by Program Benefit Year - NOT APPLICABLE

(5) ACA Risk Corridors Receivable as of Reporting Date

	1	2	3	4	5	6
Risk Corridors Program Year	Estimated Amount to be Filed or Final Amount Filed with CMS	Non-Accrued Amounts for Impairment or Other Reasons	Amounts received from CMS	Asset Balance (Gross of Non-admissions) (1-2-3)	Non-admitted Amount	Net Admitted Asset (4 - 5)
a. 2014	\$ 465,000	\$ 70,000	\$ 395,000	\$ -	\$ -	\$ -
b. 2015	\$ 14,346,000	\$ 717,000	\$ 13,629,000	\$ -	\$ -	\$ -

NOTES TO FINANCIAL STATEMENTS

c. 2016	\$ 26,340,000	\$ 1,318,000	\$ 25,022,000	\$ -	\$ -	\$ -
d. Total (a + b + c)	\$ 41,151,000	\$ 2,105,000	\$ 39,046,000	\$ -	\$ -	\$ -

24E(5)d (Column 4) should equal 24E(3)c1 (Column 9)

24E(5)d (Column 6) should equal 24E(2)c1

NOTE 25 Change in Incurred Claims and Claim Adjustment Expenses

Adjustments to previously rendered claims reserve estimates are reflected in the statement of operations in the period in which the estimates are revised. Such reserve adjustments consist of restatements of claim estimates and release of any margin associated with these estimates. Reserve adjustments have decreased by \$18,436,000 from \$481,111,000 to \$462,675,000 in 2024.

NOTE 26 Intercompany Pooling Arrangements

No significant changes.

NOTE 27 Structured Settlements

Not applicable.

NOTE 28 Health Care Receivables

No significant changes.

NOTE 29 Participating Policies

No significant changes.

NOTE 30 Premium Deficiency Reserves

No significant changes.

NOTE 31 Anticipated Salvage and Subrogation

No significant changes.

STATEMENT AS OF SEPTEMBER 30, 2024 OF THE Priority Health
GENERAL INTERROGATORIES

PART 1 - COMMON INTERROGATORIES

GENERAL

- 1.1 Did the reporting entity experience any material transactions requiring the filing of Disclosure of Material Transactions with the State of Domicile, as required by the Model Act? Yes [] No [X]
- 1.2 If yes, has the report been filed with the domiciliary state? Yes [] No []
- 2.1 Has any change been made during the year of this statement in the charter, by-laws, articles of incorporation, or deed of settlement of the reporting entity? Yes [] No [X]
- 2.2 If yes, date of change:
- 3.1 Is the reporting entity a member of an Insurance Holding Company System consisting of two or more affiliated persons, one or more of which is an insurer? Yes [X] No []
 If yes, complete Schedule Y, Parts 1 and 1A.
- 3.2 Have there been any substantial changes in the organizational chart since the prior quarter end? Yes [] No [X]
- 3.3 If the response to 3.2 is yes, provide a brief description of those changes.

- 3.4 Is the reporting entity publicly traded or a member of a publicly traded group? Yes [] No [X]
- 3.5 If the response to 3.4 is yes, provide the CIK (Central Index Key) code issued by the SEC for the entity/group.
- 4.1 Has the reporting entity been a party to a merger or consolidation during the period covered by this statement? Yes [] No [X]
- 4.2 If yes, provide the name of the entity, NAIC Company Code, and state of domicile (use two letter state abbreviation) for any entity that has ceased to exist as a result of the merger or consolidation.

1 Name of Entity	2 NAIC Company Code	3 State of Domicile

5. If the reporting entity is subject to a management agreement, including third-party administrator(s), managing general agent(s), attorney-in-fact, or similar agreement, have there been any significant changes regarding the terms of the agreement or principals involved? Yes [] No [X] N/A []
 If yes, attach an explanation.

- 6.1 State as of what date the latest financial examination of the reporting entity was made or is being made. 12/31/2022
- 6.2 State the as of date that the latest financial examination report became available from either the state of domicile or the reporting entity. This date should be the date of the examined balance sheet and not the date the report was completed or released. 12/31/2022
- 6.3 State as of what date the latest financial examination report became available to other states or the public from either the state of domicile or the reporting entity. This is the release date or completion date of the examination report and not the date of the examination (balance sheet date). 02/12/2024
- 6.4 By what department or departments?
 State of Michigan Department of Insurance and Financial Services
- 6.5 Have all financial statement adjustments within the latest financial examination report been accounted for in a subsequent financial statement filed with Departments? Yes [] No [] N/A [X]
- 6.6 Have all of the recommendations within the latest financial examination report been complied with? Yes [X] No [] N/A []
- 7.1 Has this reporting entity had any Certificates of Authority, licenses or registrations (including corporate registration, if applicable) suspended or revoked by any governmental entity during the reporting period? Yes [] No [X]
- 7.2 If yes, give full information:

- 8.1 Is the company a subsidiary of a bank holding company regulated by the Federal Reserve Board? Yes [] No [X]
- 8.2 If response to 8.1 is yes, please identify the name of the bank holding company.

- 8.3 Is the company affiliated with one or more banks, thrifts or securities firms? Yes [] No [X]
- 8.4 If response to 8.3 is yes, please provide below the names and location (city and state of the main office) of any affiliates regulated by a federal regulatory services agency [i.e. the Federal Reserve Board (FRB), the Office of the Comptroller of the Currency (OCC), the Federal Deposit Insurance Corporation (FDIC) and the Securities Exchange Commission (SEC)] and identify the affiliate's primary federal regulator.

1 Affiliate Name	2 Location (City, State)	3 FRB	4 OCC	5 FDIC	6 SEC

STATEMENT AS OF SEPTEMBER 30, 2024 OF THE Priority Health
GENERAL INTERROGATORIES

- 9.1 Are the senior officers (principal executive officer, principal financial officer, principal accounting officer or controller, or persons performing similar functions) of the reporting entity subject to a code of ethics, which includes the following standards? Yes [X] No []
- (a) Honest and ethical conduct, including the ethical handling of actual or apparent conflicts of interest between personal and professional relationships;
- (b) Full, fair, accurate, timely and understandable disclosure in the periodic reports required to be filed by the reporting entity;
- (c) Compliance with applicable governmental laws, rules and regulations;
- (d) The prompt internal reporting of violations to an appropriate person or persons identified in the code; and
- (e) Accountability for adherence to the code.
- 9.11 If the response to 9.1 is No, please explain:
- 9.2 Has the code of ethics for senior managers been amended? Yes [] No [X]
- 9.21 If the response to 9.2 is Yes, provide information related to amendment(s).
- 9.3 Have any provisions of the code of ethics been waived for any of the specified officers? Yes [] No [X]
- 9.31 If the response to 9.3 is Yes, provide the nature of any waiver(s).

FINANCIAL

- 10.1 Does the reporting entity report any amounts due from parent, subsidiaries or affiliates on Page 2 of this statement? Yes [X] No []
- 10.2 If yes, indicate any amounts receivable from parent included in the Page 2 amount: \$ 65,449

INVESTMENT

- 11.1 Were any of the stocks, bonds, or other assets of the reporting entity loaned, placed under option agreement, or otherwise made available for use by another person? (Exclude securities under securities lending agreements.) Yes [X] No []
- 11.2 If yes, give full and complete information relating thereto:
12. Amount of real estate and mortgages held in other invested assets in Schedule BA: \$
13. Amount of real estate and mortgages held in short-term investments: \$
- 14.1 Does the reporting entity have any investments in parent, subsidiaries and affiliates? Yes [X] No []
- 14.2 If yes, please complete the following:

	1 Prior Year-End Book/Adjusted Carrying Value	2 Current Quarter Book/Adjusted Carrying Value
14.21 Bonds	\$ 0	\$
14.22 Preferred Stock	\$ 0	\$
14.23 Common Stock	\$ 316,696,426	\$ 360,234,529
14.24 Short-Term Investments	\$ 0	\$
14.25 Mortgage Loans on Real Estate	\$ 0	\$
14.26 All Other	\$ 6,700,000	\$ 6,700,000
14.27 Total Investment in Parent, Subsidiaries and Affiliates (Subtotal Lines 14.21 to 14.26)	\$ 323,396,426	\$ 366,934,529
14.28 Total Investment in Parent included in Lines 14.21 to 14.26 above	\$	\$

- 15.1 Has the reporting entity entered into any hedging transactions reported on Schedule DB? Yes [] No [X]
- 15.2 If yes, has a comprehensive description of the hedging program been made available to the domiciliary state? Yes [] No [] N/A []
 If no, attach a description with this statement.
16. For the reporting entity's security lending program, state the amount of the following as of the current statement date:
- 16.1 Total fair value of reinvested collateral assets reported on Schedule DL, Parts 1 and 2. \$ 0
- 16.2 Total book/adjusted carrying value of reinvested collateral assets reported on Schedule DL, Parts 1 and 2 \$ 0
- 16.3 Total payable for securities lending reported on the liability page. \$ 0

STATEMENT AS OF SEPTEMBER 30, 2024 OF THE Priority Health
GENERAL INTERROGATORIES

17. Excluding items in Schedule E - Part 3 - Special Deposits, real estate, mortgage loans and investments held physically in the reporting entity's offices, vaults or safety deposit boxes, were all stocks, bonds and other securities, owned throughout the current year held pursuant to a custodial agreement with a qualified bank or trust company in accordance with Section 1, III - General Examination Considerations, F. Outsourcing of Critical Functions, Custodial or Safekeeping Agreements of the NAIC Financial Condition Examiners Handbook? Yes [X] No []
- 17.1 For all agreements that comply with the requirements of the NAIC Financial Condition Examiners Handbook, complete the following:

1 Name of Custodian(s)	2 Custodian Address
Northern Trust	Chicago, IL

- 17.2 For all agreements that do not comply with the requirements of the NAIC Financial Condition Examiners Handbook, provide the name, location and a complete explanation:

1 Name(s)	2 Location(s)	3 Complete Explanation(s)

- 17.3 Have there been any changes, including name changes, in the custodian(s) identified in 17.1 during the current quarter? Yes [] No [X]

- 17.4 If yes, give full information relating thereto:

1 Old Custodian	2 New Custodian	3 Date of Change	4 Reason

- 17.5 Investment management – Identify all investment advisors, investment managers, broker/dealers, including individuals that have the authority to make investment decisions on behalf of the reporting entity. For assets that are managed internally by employees of the reporting entity, note as such. ["...that have access to the investment accounts"; "...handle securities"]

1 Name of Firm or Individual	2 Affiliation
BlackRock Financial Management, Inc	U.....
Sun Life Capital Management, LLC	U.....
Robert W. Baird & Co. Inc.	U.....
Pacific Investment Management Company, LLC	U.....

- 17.5097 For those firms/individuals listed in the table for Question 17.5, do any firms/individuals unaffiliated with the reporting entity (i.e. designated with a "U") manage more than 10% of the reporting entity's invested assets?..... Yes [X] No []

- 17.5098 For firms/individuals unaffiliated with the reporting entity (i.e. designated with a "U") listed in the table for Question 17.5, does the total assets under management aggregate to more than 50% of the reporting entity's invested assets?..... Yes [] No [X]

- 17.6 For those firms or individuals listed in the table for 17.5 with an affiliation code of "A" (affiliated) or "U" (unaffiliated), provide the information for the table below.

1	2	3	4	5
Central Registration Depository Number	Name of Firm or Individual	Legal Entity Identifier (LEI)	Registered With	Investment Management Agreement (IMA) Filed
N/A	BlackRock Financial Management, Inc	549300LVXY1VJKE13M84	SEC	NO.....
N/A	Sun Life Capital Management, LLC	5493001YLOMBHWNPEN55	SEC	NO.....
N/A	Robert W. Baird & Co. Inc.	549300772USAHRDGL053	SEC	NO.....
N/A	Pacific Investment Management Company, LLC	549300KGPYQZXGMYYN38	SEC	NO.....

- 18.1 Have all the filing requirements of the Purposes and Procedures Manual of the NAIC Investment Analysis Office been followed? Yes [X] No []

- 18.2 If no, list exceptions:

19. By self-designating 5GI securities, the reporting entity is certifying the following elements for each self-designated 5GI security:

- a. Documentation necessary to permit a full credit analysis of the security does not exist or an NAIC CRP credit rating for an FE or PL security is not available.
- b. Issuer or obligor is current on all contracted interest and principal payments.
- c. The insurer has an actual expectation of ultimate payment of all contracted interest and principal.

- Has the reporting entity self-designated 5GI securities? Yes [] No [X]

20. By self-designating PLGI securities, the reporting entity is certifying the following elements of each self-designated PLGI security:

- a. The security was purchased prior to January 1, 2018.
- b. The reporting entity is holding capital commensurate with the NAIC Designation reported for the security.
- c. The NAIC Designation was derived from the credit rating assigned by an NAIC CRP in its legal capacity as a NRSRO which is shown on a current private letter rating held by the insurer and available for examination by state insurance regulators.
- d. The reporting entity is not permitted to share this credit rating of the PL security with the SVO.

- Has the reporting entity self-designated PLGI securities? Yes [] No [X]

21. By assigning FE to a Schedule BA non-registered private fund, the reporting entity is certifying the following elements of each self-designated FE fund:

- a. The shares were purchased prior to January 1, 2019.
- b. The reporting entity is holding capital commensurate with the NAIC Designation reported for the security.
- c. The security had a public credit rating(s) with annual surveillance assigned by an NAIC CRP in its legal capacity as an NRSRO prior to January 1, 2019.
- d. The fund only or predominantly holds bonds in its portfolio.
- e. The current reported NAIC Designation was derived from the public credit rating(s) with annual surveillance assigned by an NAIC CRP in its legal capacity as an NRSRO.
- f. The public credit rating(s) with annual surveillance assigned by an NAIC CRP has not lapsed.

- Has the reporting entity assigned FE to Schedule BA non-registered private funds that complied with the above criteria? Yes [] No [X]

GENERAL INTERROGATORIES

PART 2 - HEALTH

- 1. Operating Percentages:
 - 1.1 A&H loss percent90.2 %
 - 1.2 A&H cost containment percent 1.4 %
 - 1.3 A&H expense percent excluding cost containment expenses 9.2 %

- 2.1 Do you act as a custodian for health savings accounts? Yes [] No []
- 2.2 If yes, please provide the amount of custodial funds held as of the reporting date \$.....
- 2.3 Do you act as an administrator for health savings accounts? Yes [] No []
- 2.4 If yes, please provide the balance of the funds administered as of the reporting date \$.....

- 3. Is the reporting entity licensed or chartered, registered, qualified, eligible or writing business in at least two states? Yes [] No []
- 3.1 If no, does the reporting entity assume reinsurance business that covers risks residing in at least one state other than the state of domicile of the reporting entity? Yes [] No []

SCHEDULE T - PREMIUMS AND OTHER CONSIDERATIONS

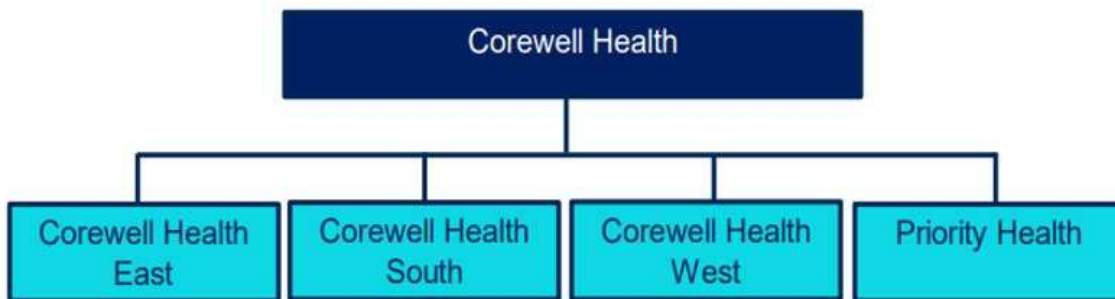
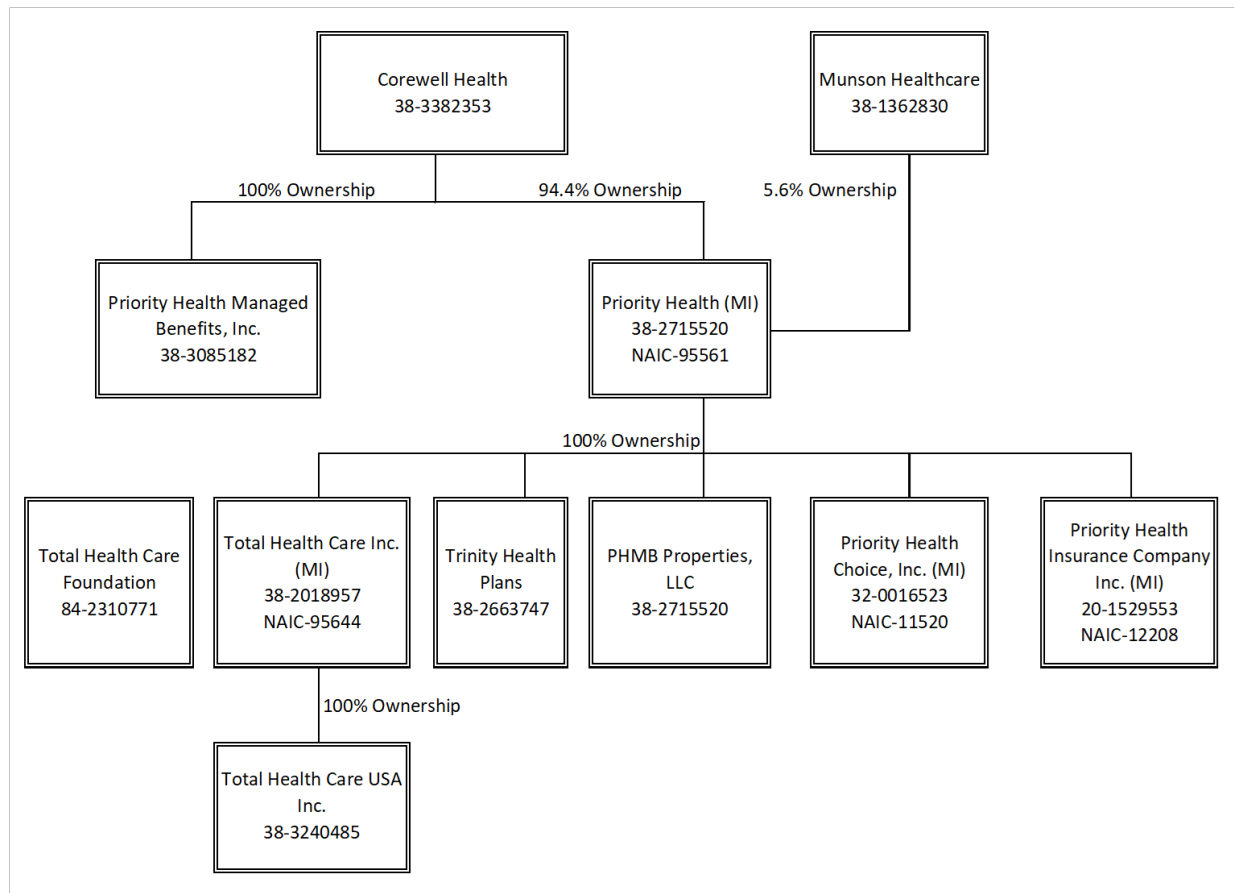
Current Year to Date - Allocated by States and Territories

States, etc.	1 Active Status (a)	Direct Business Only									
		2 Accident and Health Premiums	3 Medicare Title XVIII	4 Medicaid Title XIX	5 CHIP Title XXI	6 Federal Employees Health Benefits Program Premiums	7 Life and Annuity Premiums & Other Considerations	8 Property/Casualty Premiums	9 Total Columns 2 Through 8	10 Deposit-Type Contracts	
1. Alabama	AL	N								0	
2. Alaska	AK	N								0	
3. Arizona	AZ	N								0	
4. Arkansas	AR	N								0	
5. California	CA	N								0	
6. Colorado	CO	N								0	
7. Connecticut	CT	N								0	
8. Delaware	DE	N								0	
9. District of Columbia	DC	N								0	
10. Florida	FL	N								0	
11. Georgia	GA	N								0	
12. Hawaii	HI	N								0	
13. Idaho	ID	N								0	
14. Illinois	IL	N								0	
15. Indiana	IN	N								0	
16. Iowa	IA	N								0	
17. Kansas	KS	N								0	
18. Kentucky	KY	N								0	
19. Louisiana	LA	N								0	
20. Maine	ME	N								0	
21. Maryland	MD	N								0	
22. Massachusetts	MA	N								0	
23. Michigan	MI	L	2,260,971,659	2,123,840,691		9,766,265				4,394,578,615	
24. Minnesota	MN	N								0	
25. Mississippi	MS	N								0	
26. Missouri	MO	N								0	
27. Montana	MT	N								0	
28. Nebraska	NE	N								0	
29. Nevada	NV	N								0	
30. New Hampshire	NH	N								0	
31. New Jersey	NJ	N								0	
32. New Mexico	NM	N								0	
33. New York	NY	N								0	
34. North Carolina	NC	N								0	
35. North Dakota	ND	N								0	
36. Ohio	OH	N								0	
37. Oklahoma	OK	N								0	
38. Oregon	OR	N								0	
39. Pennsylvania	PA	N								0	
40. Rhode Island	RI	N								0	
41. South Carolina	SC	N								0	
42. South Dakota	SD	N								0	
43. Tennessee	TN	N								0	
44. Texas	TX	N								0	
45. Utah	UT	N								0	
46. Vermont	VT	N								0	
47. Virginia	VA	N								0	
48. Washington	WA	N								0	
49. West Virginia	WV	N								0	
50. Wisconsin	WI	N								0	
51. Wyoming	WY	N								0	
52. American Samoa	AS	N								0	
53. Guam	GU	N								0	
54. Puerto Rico	PR	N								0	
55. U.S. Virgin Islands	VI	N								0	
56. Northern Mariana Islands	MP	N								0	
57. Canada	CAN	N								0	
58. Aggregate Other Aliens	OT	XXX	0	0	0	0	0	0	0	0	0
59. Subtotal	XXX	2,260,971,659	2,123,840,691	0	0	9,766,265	0	0	4,394,578,615	0	0
60. Reporting Entity Contributions for Employee Benefit Plans	XXX								0		
61. Totals (Direct Business)	XXX	2,260,971,659	2,123,840,691	0	0	9,766,265	0	0	4,394,578,615	0	0
DETAILS OF WRITE-INS											
58001.	XXX										
58002.	XXX										
58003.	XXX										
58998. Summary of remaining write-ins for Line 58 from overflow page	XXX	0	0	0	0	0	0	0	0	0	0
58999. Totals (Lines 58001 through 58003 plus 58998)(Line 58 above)	XXX	0	0	0	0	0	0	0	0	0	0

(a) Active Status Counts:

- 1. L - Licensed or Chartered - Licensed insurance carrier or domiciled RRG..... 1
- 2. R - Registered - Non-domiciled RRGs..... 0
- 3. E - Eligible - Reporting entities eligible or approved to write surplus lines in the state. 0
- 4. Q - Qualified - Qualified or accredited reinsurer..... 0
- 5. N - None of the above - Not allowed to write business in the state..... 56

**SCHEDULE Y – INFORMATION CONCERNING ACTIVITIES OF
INSURER MEMBERS OF A HOLDING COMPANY GROUP
PART 1 – ORGANIZATIONAL CHART**



STATEMENT AS OF SEPTEMBER 30, 2024 OF THE Priority Health

SCHEDULE Y

PART 1A - DETAIL OF INSURANCE HOLDING COMPANY SYSTEM

1	2	3	4	5	6	7	8	9	10	11	12	13	14	15	16
Group Code	Group Name	NAIC Company Code	ID Number	Federal RSSD	CIK	Name of Securities Exchange if Publicly Traded (U.S. or International)	Names of Parent, Subsidiaries Or Affiliates	Domi-ciliary Location	Relation-ship to Reporting Entity	Directly Controlled by (Name of Entity/Person)	Type of Control (Ownership, Board, Management, Attorney-in-Fact, Influence, Other)	If Control is Ownership Provide Percentage	Ultimate Controlling Entity(ies)/Person(s)	Is an SCA Filing Re-quired? (Yes/No)	*
. 3383 ...	Corewell Health Group	95661	38-2715520 ..	0	0	Priority Health MI.....	UDP.....	Corewell Health	Ownership.....	94.400	Corewell Health NO.....	... 1
.....	0	0	Munson HealthCare	Ownership.....	5.600 NO.....	... 1
. 3383 ...	Corewell Health Group	11520	32-0016523 ..	0	0	Priority Health Choice, Inc. MI.....	IA.....	Priority Health	Ownership.....	100.000	Corewell Health NO.....	... 0
. 3383 ...	Corewell Health Group	12208	20-1529553 ..	0	0	Priority Health Insurance Company MI.....	IA.....	Priority Health	Ownership.....	100.000	Corewell Health NO.....	... 0
. 3383 ...	Corewell Health Group	95644	38-2018957 ..	0	0	Total Health Care Inc. MI.....	IA.....	Priority Health	Ownership.....	100.000	Corewell Health NO.....	... 0
. 3383 ...	Corewell Health Group	38-3240485 ..	0	0	Total Health Care USA Inc. MI.....	NIA.....	Total Health Care Inc.	Ownership.....	100.000	Corewell Health NO.....	... 0
.....	84-2310771 ..	0	0	Total Health Care Foundation MI.....	NIA.....	Priority Health	Board of Directors.....	0.000	Corewell Health NO.....	... 0
. 3383 ...	Corewell Health Group	38-2715520 ..	0	0	PHMB Properties, LLC MI.....	NIA.....	Priority Health	Ownership.....	100.000	Corewell Health NO.....	... 0
. 3383 ...	Corewell Health Group	38-2663747 ..	0	0	Trinity Health Plans MI.....	NIA.....	Priority Health	Ownership.....	100.000	Corewell Health NO.....	... 0
.....	38-3085182 ..	0	0	Priority Health Managed Benefits, Inc. MI.....	NIA.....	Corewell Health	Ownership.....	100.000	Corewell Health NO.....	... 0
.....	0	0	Corewell Health Grand Rapids MI.....	NIA.....	Corewell Health	Ownership.....	100.000	Corewell Health NO.....	... 0
.....	0	0	Corewell Health Big Rapids MI.....	NIA.....	Corewell Health	Ownership.....	100.000	Corewell Health NO.....	... 0
.....	0	0	Corewell Health Reed City MI.....	NIA.....	Corewell Health	Ownership.....	100.000	Corewell Health NO.....	... 0
.....	0	0	Corewell Health Gerber MI.....	NIA.....	Corewell Health	Ownership.....	100.000	Corewell Health NO.....	... 0
.....	0	0	Corewell Health Ludington MI.....	NIA.....	Corewell Health	Ownership.....	100.000	Corewell Health NO.....	... 0
.....	0	0	Corewell Health Pennock MI.....	NIA.....	Corewell Health	Ownership.....	100.000	Corewell Health NO.....	... 0
.....	0	0	Corewell Health Greenville MI.....	NIA.....	Corewell Health	Ownership.....	100.000	Corewell Health NO.....	... 0
.....	0	0	Corewell Health Kelsey MI.....	NIA.....	Corewell Health	Ownership.....	100.000	Corewell Health NO.....	... 0
.....	0	0	Corewell Health Zeeland MI.....	NIA.....	Corewell Health	Ownership.....	100.000	Corewell Health NO.....	... 0
.....	0	0	Corewell Health West - Continuing Care MI.....	NIA.....	Corewell Health	Ownership.....	100.000	Corewell Health NO.....	... 0
.....	0	0	Corewell Health Medical Group West MI.....	NIA.....	Corewell Health	Ownership.....	100.000	Corewell Health NO.....	... 0
.....	0	0	Corewell Health South MI.....	NIA.....	Corewell Health	Ownership.....	100.000	Corewell Health NO.....	... 0
.....	0	0	Corewell Health East MI.....	NIA.....	Corewell Health	Ownership.....	100.000	Corewell Health NO.....	... 0

Asterisk	Explanation
1	Corewell Health (EIN 38-3382353), Class A Shareholder - 94.4%; Munson Healthcare (EIN 38-1362830), Class B Shareholder - 5.6%

SUPPLEMENTAL EXHIBITS AND SCHEDULES INTERROGATORIES

The following supplemental reports are required to be filed as part of your statement filing. However, in the event that your company does not transact the type of business for which the special report must be filed, your response of NO to the specific interrogatory will be accepted in lieu of filing a "NONE" report and a bar code will be printed below. If the supplement is required of your company but is not being filed for whatever reason enter SEE EXPLANATION and provide an explanation following the interrogatory questions.

	Response
1. Will the Medicare Part D Coverage Supplement be filed with the state of domicile and the NAIC with this statement?	NO

AUGUST FILING

2. Will the regulator-only (non-public) Communication of Internal Control Related Matters Noted in Audit be filed with the state of domicile and electronically with the NAIC (as a regulator-only non-public document) by August 1? The response for 1st and 3rd quarters should be N/A. A NO response resulting with a bar code is only appropriate in the 2nd quarter.	N/A
--	-----

Explanation:

- The data for this supplement is not required to be filed.

Bar Code:

- Medicare Part D Coverage Supplement [Document Identifier 365]



NONE

STATEMENT AS OF SEPTEMBER 30, 2024 OF THE Priority Health

SCHEDULE A - VERIFICATION

Real Estate

	1 Year to Date	2 Prior Year Ended December 31
1. Book/adjusted carrying value, December 31 of prior year		
2. Cost of acquired:		
2.1 Actual cost at time of acquisition		
2.2 Additional investment made after acquisition		
3. Current year change in encumbrances		
4. Total gain (loss) on disposals		
5. Deduct amounts received on disposals		
6. Total foreign exchange change in book/adjusted carrying value		
7. Deduct current year's other than temporary impairment recognized		
8. Deduct current year's depreciation		
9. Book/adjusted carrying value at the end of current period (Lines 1+2+3+4-5+6-7-8)		
10. Deduct total nonadmitted amounts		
11. Statement value at end of current period (Line 9 minus Line 10)		

NONE

SCHEDULE B - VERIFICATION

Mortgage Loans

	1 Year to Date	2 Prior Year Ended December 31
1. Book value/recorded investment excluding accrued interest, December 31 of prior year		
2. Cost of acquired:		
2.1 Actual cost at time of acquisition		
2.2 Additional investment made after acquisition		
3. Capitalized deferred interest and other		
4. Accrual of discount		
5. Unrealized valuation increase/(decrease)		
6. Total gain (loss) on disposals		
7. Deduct amounts received on disposals		
8. Deduct amortization of premium and mortgage interest paid and commitment fees		
9. Total foreign exchange change in book value/recorded investment excluding accrued interest		
10. Deduct current year's other than temporary impairment recognized		
11. Book value/recorded investment excluding accrued interest at end of current period (Lines 1+2+3+4+5+6-7-8+9-10)		
12. Total valuation allowance		
13. Subtotal (Line 11 plus Line 12)		
14. Deduct total nonadmitted amounts		
15. Statement value at end of current period (Line 13 minus Line 14)		

NONE

SCHEDULE BA - VERIFICATION

Other Long-Term Invested Assets

	1 Year to Date	2 Prior Year Ended December 31
1. Book/adjusted carrying value, December 31 of prior year	6,700,000	
2. Cost of acquired:		
2.1 Actual cost at time of acquisition		
2.2 Additional investment made after acquisition		
3. Capitalized deferred interest and other		
4. Accrual of discount		
5. Unrealized valuation increase/(decrease)		
6. Total gain (loss) on disposals		
7. Deduct amounts received on disposals		
8. Deduct amortization of premium and depreciation		
9. Total foreign exchange change in book/adjusted carrying value		
10. Deduct current year's other than temporary impairment recognized		
11. Book/adjusted carrying value at end of current period (Lines 1+2+3+4+5+6-7-8+9-10)	6,700,000	0
12. Deduct total nonadmitted amounts	6,700,000	
13. Statement value at end of current period (Line 11 minus Line 12)	0	0

SCHEDULE D - VERIFICATION

Bonds and Stocks

	1 Year to Date	2 Prior Year Ended December 31
1. Book/adjusted carrying value of bonds and stocks, December 31 of prior year	1,245,804,412	1,168,943,547
2. Cost of bonds and stocks acquired	114,765,244	182,521,321
3. Accrual of discount	1,521,189	1,520,708
4. Unrealized valuation increase/(decrease)	64,106,327	58,352,684
5. Total gain (loss) on disposals	9,069,276	(10,919,864)
6. Deduct consideration for bonds and stocks disposed of	123,977,322	146,462,789
7. Deduct amortization of premium	1,025,336	1,451,195
8. Total foreign exchange change in book/adjusted carrying value	0	
9. Deduct current year's other than temporary impairment recognized	0	
10. Total investment income recognized as a result of prepayment penalties and/or acceleration fees	12,272	
11. Book/adjusted carrying value at end of current period (Lines 1+2+3+4+5-6-7+8-9+10)	1,310,276,062	1,252,504,412
12. Deduct total nonadmitted amounts		6,700,000
13. Statement value at end of current period (Line 11 minus Line 12)	1,310,276,062	1,245,804,412

STATEMENT AS OF SEPTEMBER 30, 2024 OF THE Priority Health

SCHEDULE D - PART 1B

Showing the Acquisitions, Dispositions and Non-Trading Activity
During the Current Quarter for all Bonds and Preferred Stock by NAIC Designation

NAIC Designation	1 Book/Adjusted Carrying Value Beginning of Current Quarter	2 Acquisitions During Current Quarter	3 Dispositions During Current Quarter	4 Non-Trading Activity During Current Quarter	5 Book/Adjusted Carrying Value End of First Quarter	6 Book/Adjusted Carrying Value End of Second Quarter	7 Book/Adjusted Carrying Value End of Third Quarter	8 Book/Adjusted Carrying Value December 31 Prior Year
BONDS								
1. NAIC 1 (a)	873,376,279	169,646,050	152,405,151	2,643,424	870,335,642	873,376,279	893,260,602	856,325,646
2. NAIC 2 (a)	108,384,816	16,241,976	20,061,080	357,755	107,720,337	108,384,816	104,923,467	107,728,331
3. NAIC 3 (a)	0	0	0	427,011	0	0	427,011	293,233
4. NAIC 4 (a)	268,915	0	5,827	(2,522)	263,608	268,915	260,566	258,819
5. NAIC 5 (a)	0	0	0	0	0	0	0	0
6. NAIC 6 (a)	0	0	0	0	0	0	0	0
7. Total Bonds	982,030,010	185,888,026	172,472,058	3,425,668	978,319,587	982,030,010	998,871,646	964,606,029
PREFERRED STOCK								
8. NAIC 1	0	0	0	0	0	0	0	0
9. NAIC 2	0	0	0	0	0	0	0	0
10. NAIC 3	0	0	0	0	0	0	0	0
11. NAIC 4	0	0	0	0	0	0	0	0
12. NAIC 5	0	0	0	0	0	0	0	0
13. NAIC 6	0	0	0	0	0	0	0	0
14. Total Preferred Stock	0	0	0	0	0	0	0	0
15. Total Bonds and Preferred Stock	982,030,010	185,888,026	172,472,058	3,425,668	978,319,587	982,030,010	998,871,646	964,606,029

(a) Book/Adjusted Carrying Value column for the end of the current reporting period includes the following amount of short-term and cash equivalent bonds by NAIC designation:

NAIC 1 \$ 343,376,956 ; NAIC 2 \$ 21,398,957 ; NAIC 3 \$ 0 ; NAIC 4 \$ 0 ; NAIC 5 \$ 0 ; NAIC 6 \$ 0

S102

SCHEDULE DA - PART 1

Short-Term Investments

	1	2	3	4	5
	Book/Adjusted Carrying Value	Par Value	Actual Cost	Interest Collected Year-to-Date	Paid for Accrued Interest Year-to-Date
7709999999 Totals	357,488,899	xxx	352,110,306	1,463,213	247,773

SCHEDULE DA - VERIFICATION

Short-Term Investments

	1	2
	Year To Date	Prior Year Ended December 31
1. Book/adjusted carrying value, December 31 of prior year	334,711,498	303,930,849
2. Cost of short-term investments acquired	340,467,493	442,571,782
3. Accrual of discount	9,564,612	9,285,121
4. Unrealized valuation increase/(decrease)	0	0
5. Total gain (loss) on disposals	1,461	(159,824)
6. Deduct consideration received on disposals	327,247,065	420,871,009
7. Deduct amortization of premium	9,098	45,421
8. Total foreign exchange change in book/adjusted carrying value	0	0
9. Deduct current year's other than temporary impairment recognized	0	0
10. Book/adjusted carrying value at end of current period (Lines 1+2+3+4+5-6-7+8-9)	357,488,901	334,711,498
11. Deduct total nonadmitted amounts	0	0
12. Statement value at end of current period (Line 10 minus Line 11)	357,488,901	334,711,498

Schedule DB - Part A - Verification - Options, Caps, Floors, Collars, Swaps and Forwards

N O N E

Schedule DB - Part B - Verification - Futures Contracts

N O N E

Schedule DB - Part C - Section 1 - Replication (Synthetic Asset) Transactions (RSATs) Open

N O N E

Schedule DB-Part C-Section 2-Reconciliation of Replication (Synthetic Asset) Transactions Open

N O N E

Schedule DB - Verification - Book/Adjusted Carrying Value, Fair Value and Potential Exposure of
Derivatives

N O N E

STATEMENT AS OF SEPTEMBER 30, 2024 OF THE Priority Health
SCHEDULE E - PART 2 - VERIFICATION
(Cash Equivalents)

	1	2
	Year To Date	Prior Year Ended December 31
1. Book/adjusted carrying value, December 31 of prior year	218,781,112	186,327,167
2. Cost of cash equivalents acquired	4,832,286,374	5,179,821,623
3. Accrual of discount	386,865	646,967
4. Unrealized valuation increase/(decrease)	0	0
5. Total gain (loss) on disposals	(157)	1,775
6. Deduct consideration received on disposals	4,596,782,264	5,148,016,420
7. Deduct amortization of premium	0	0
8. Total foreign exchange change in book/adjusted carrying value	0	0
9. Deduct current year's other than temporary impairment recognized	0	0
10. Book/adjusted carrying value at end of current period (Lines 1+2+3+4+5-6-7+8-9)	454,671,930	218,781,112
11. Deduct total nonadmitted amounts	0	0
12. Statement value at end of current period (Line 10 minus Line 11)	454,671,930	218,781,112

Schedule A - Part 2 - Real Estate Acquired and Additions Made

NONE

Schedule A - Part 3 - Real Estate Disposed

NONE

Schedule B - Part 2 - Mortgage Loans Acquired and Additions Made

NONE

Schedule B - Part 3 - Mortgage Loans Disposed, Transferred or Repaid

NONE

Schedule BA - Part 2 - Other Long-Term Invested Assets Acquired and Additions Made

NONE

Schedule BA - Part 3 - Other Long-Term Invested Assets Disposed, Transferred or Repaid

NONE

STATEMENT AS OF SEPTEMBER 30, 2024 OF THE Priority Health

SCHEDULE D - PART 3

Show All Long-Term Bonds and Stock Acquired During the Current Quarter

1	2	3	4	5	6	7	8	9	10
CUSIP Identification	Description	Foreign	Date Acquired	Name of Vendor	Number of Shares of Stock	Actual Cost	Par Value	Paid for Accrued Interest and Dividends	NAIC Designation, NAIC Designation Modifier and SVO Administrative Symbol
3622AC-RZ-5	GNMA #786904		07/25/2024	NORTHERN TRUST		483,853	475,094	1,980	1.A
3622AD-F3-7	GNMA #787486		09/25/2024	NORTHERN TRUST		403,262	394,509	1,507	1.A
912810-SH-2	US TREASURY N/B		07/31/2024	NORTHERN TRUST		247,965	325,000	1,980	1.A
912810-TQ-1	US TREASURY N/B		09/30/2024	NORTHERN TRUST		506,643	525,000	2,532	1.A
912810-TS-7	US TREASURY N/B		09/25/2024	NORTHERN TRUST		688,066	725,000	8,711	1.A
91282C-DJ-7	US TREASURY N/B		09/30/2024	NORTHERN TRUST		2,278,098	2,675,000	11,164	1.A
91282C-ES-6	US TREASURY N/B		08/30/2024	NORTHERN TRUST		454,386	475,000	3,391	1.A
91282C-FH-9	US TREASURY N/B		09/30/2024	NORTHERN TRUST		3,194,973	3,250,000	14,165	1.A
91282C-HT-1	US TREASURY N/B		07/11/2024	NORTHERN TRUST		292,723	300,000	4,727	1.A
91282C-JX-0	US TREASURY N/B		07/15/2024	NORTHERN TRUST		346,883	350,000	6,423	1.A
91282C-KA-8	US TREASURY N/B		07/11/2024	NORTHERN TRUST		74,574	75,000	1,258	1.A
91282C-KQ-3	US TREASURY N/B		08/30/2024	NORTHERN TRUST		5,683,727	5,500,000	55,936	1.A
91282C-LD-1	US TREASURY N/B		08/12/2024	CIG		2,040,313	2,000,000	2,914	1.A
010999999. Subtotal - Bonds - U.S. Governments						16,695,466	17,669,603	116,688	XXX
748148-SF-1	QUEBEC PROVINCE		08/28/2024	NORTHERN TRUST		1,896,162	1,900,000	0	1.D FE
030999999. Subtotal - Bonds - All Other Governments						1,896,162	1,900,000	0	XXX
3133KL-AZ-0	FHLMC RA4524		07/19/2024	CAF		579,095	760,716	666	1.A
3136BM-XZ-6	FNA 2022-M10 A2		09/10/2024	NORTHERN TRUST		522,398	600,000	334	1.A
3136BS-R6-4	FNR 2024-6A FG		08/14/2024	CANCEL/CORRECT		1,500,000	1,500,000	1,344	1.A
3137HD-YP-9	FHR 5440 KF		08/01/2024	NORTHERN TRUST		487,468	487,468	944	1.A
3140KE-JB-2	FNMA #BP6586		08/09/2024	NORTHERN TRUST		404,350	445,565	347	1.A
3140QJ-L5-2	FNMA #CB4847		09/03/2024	BCL		923,359	907,897	2,081	1.A
3140XQ-YF-8	FNMA #F58809		09/03/2024	MOS		1,024,482	996,457	498	1.A
31418D-RP-9	FNMA #MA4093		08/27/2024	NORTHERN TRUST		505,627	578,169	867	1.A
090999999. Subtotal - Bonds - U.S. Special Revenues						5,946,779	6,276,272	7,081	XXX
08163U-AB-5	BMARK 2024-V10 A		09/19/2024	NORTHERN TRUST		353,499	350,000	1,354	1.A FE
096919-AD-7	BMIOT 2024-A A3		08/12/2024	MIT		862,916	850,000	2,202	1.A FE
11134L-AR-0	BROADCOM CORP/CAYMN		08/13/2024	BCL		966,420	1,000,000	2,819	2.B FE
114259-AJ-2	BROOKLYN UNION GAS CO		07/15/2024	NORTHERN TRUST		981,540	950,000	20,734	2.A FE
161175-AY-0	CHARTER COMM OPT LLC/CAP		05/24/2024	CANCEL/CORRECT		439,321	575,000	7,291	2.C FE
161571-HW-7	CHAT 2024-A2 A		08/12/2024	JP MORGAN		1,169,047	1,150,000	4,141	1.A FE
36269K-AA-3	GMREV 2024-1 A		08/06/2024	NORTHERN TRUST		508,809	500,000	1,798	1.A FE
38013K-AE-0	GMCAR 2024-3 A4		08/12/2024	WAC		2,045,156	2,000,000	9,332	1.A FE
458140-CL-2	INTEL CORP		09/11/2024	NORTHERN TRUST		298,200	300,000	901	2.A FE
87166P-AK-7	SYNIT 2023-A1 A		08/09/2024	NORTHERN TRUST		1,015,117	1,000,000	4,155	1.A FE
90932W-AA-1	UNITED AIR 2024-1 AA PTT		07/22/2024	NORTHERN TRUST		600,000	600,000	0	1.D FE
92343V-GX-6	VERIZON COMMUNICATIONS		08/09/2024	EXCHANGE		999,759	933,000	0	2.A FE
BSL6VS-94-9	FANNIE MAE FNMA 24-60		08/14/2024	NORTHERN TRUST		1,500,000	1,500,000	1,344	1.A
13607P-HS-6	CANADIAN IMPERIAL BK		09/04/2024	NORTHERN TRUST		1,025,000	1,025,000	0	1.F FE
639057-AS-7	NATWEST GRP PLC	C.	08/12/2024	NORTHERN TRUST		1,000,000	1,000,000	0	1.G FE
80414L-2N-4	SAUDI ARABIAN OIL CO	C.	07/10/2024	NORTHERN TRUST		198,680	200,000	0	1.E FE
110999999. Subtotal - Bonds - Industrial and Miscellaneous (Unaffiliated)						13,963,464	13,933,000	56,071	XXX
250999997. Total - Bonds - Part 3						38,501,871	39,178,875	179,840	XXX
250999998. Total - Bonds - Part 5						XXX	XXX	XXX	XXX
250999999. Total - Bonds						38,501,871	39,178,875	179,840	XXX
450999997. Total - Preferred Stocks - Part 3						0	XXX	0	XXX
450999998. Total - Preferred Stocks - Part 5						XXX	XXX	XXX	XXX

E04

STATEMENT AS OF SEPTEMBER 30, 2024 OF THE Priority Health

SCHEDULE D - PART 3

Show All Long-Term Bonds and Stock Acquired During the Current Quarter

1 CUSIP Identification	2 Description	3 Foreign	4 Date Acquired	5 Name of Vendor	6 Number of Shares of Stock	7 Actual Cost	8 Par Value	9 Paid for Accrued Interest and Dividends	10 NAIC Designation, NAIC Designation Modifier and SVO Admini- strative Symbol
450999999. Total - Preferred Stocks						0	XXX	0	XXX
315911-75-0	FIDELITY 500 INDX FD		07/08/2024	DIVIDEND REINVESTMENT	1,410,080	272,610		0	
72201F-49-0	PIMCO INC FD-INS		09/30/2024	DIVIDEND REINVESTMENT	171,702,290	1,840,642		0	
922908-87-6	VANGUARD SMALL CAP IX FD		09/30/2024	DIVIDEND REINVESTMENT	541,310	61,476		0	
532999999. Subtotal - Common Stocks - Mutual Funds - Designations Not Assigned by the SVO						2,174,728	XXX	0	XXX
5989999997. Total - Common Stocks - Part 3						2,174,728	XXX	0	XXX
5989999998. Total - Common Stocks - Part 5						XXX	XXX	XXX	XXX
5989999999. Total - Common Stocks						2,174,728	XXX	0	XXX
5999999999. Total - Preferred and Common Stocks						2,174,728	XXX	0	XXX
6009999999 - Totals						40,676,599	XXX	179,840	XXX

STATEMENT AS OF SEPTEMBER 30, 2024 OF THE Priority Health

SCHEDULE D - PART 4

Show All Long-Term Bonds and Stock Sold, Redeemed or Otherwise Disposed of During the Current Quarter

1	2	3	4	5	6	7	8	9	10	Change In Book/Adjusted Carrying Value					16	17	18	19	20	21	22
										11	12	13	14	15							
CUSIP Identification	Description	Foreign	Disposal Date	Name of Purchaser	Number of Shares of Stock	Consideration	Par Value	Actual Cost	Prior Year Book/ Adjusted Carrying Value	Unrealized Valuation Increase/ (Decrease)	Current Year's (Amortization)/ Accretion	Current Year's Other Than Temporary Impairment Recognized	Total Change in Book/ Adjusted Carrying Value (11 + 12 - 13)	Total Foreign Exchange Change in Book /Adjusted Carrying Value	Book/ Adjusted Carrying Value at Disposal Date	Foreign Exchange Gain (Loss) on Disposal	Realized Gain (Loss) on Disposal	Total Gain (Loss) on Disposal	Bond Interest/ Stock Dividends Received During Year	Stated Contractual Maturity Date	NAIC Designation, NAIC Designation Modifier and SVO Administrative Symbol
..36179M-OP-8	GNMA #MA0462		09/01/2024	MBS PMT		15,470	15,470	13,456	15,341	0	129	0	129	0	15,470	0	0	0	362	10/20/2042	1.A
..36179N-NB-0	GNMA #MA1286		09/01/2024	MBS PMT		14,855	14,855	13,293	14,748	0	107	0	107	0	14,855	0	0	0	394	09/20/2043	1.A
..36179Q-T7-6	GNMA #MA2374		09/01/2024	MBS PMT		7,746	7,746	8,390	7,798	0	(53)	0	(53)	0	7,746	0	0	0	267	11/20/2044	1.A
..36179R-BX-6	GNMA #MA2754		09/01/2024	MBS PMT		2,757	2,757	2,823	2,762	0	(5)	0	(5)	0	2,757	0	0	0	64	04/20/2045	1.A
..36179R-NX-3	GNMA #MA3106		09/01/2024	MBS PMT		2,658	2,658	2,756	2,666	0	(8)	0	(8)	0	2,658	0	0	0	69	09/20/2045	1.A
..36179R-Q4-4	GNMA #MA3175		09/01/2024	MBS PMT		7,933	7,933	8,837	8,006	0	(73)	0	(73)	0	7,933	0	0	0	249	10/20/2045	1.A
..36179S-QV-2	GNMA #MA4068		08/14/2024	VARIOUS		272,598	297,162	313,582	313,582	0	(1,300)	0	(1,300)	0	312,282	0	(39,685)	(39,685)	6,277	11/20/2046	1.A
..36179T-LR-4	GNMA #MA4836		08/26/2024	VARIOUS		459,504	499,055	452,347	451,306	0	3,516	0	3,516	0	454,822	0	4,682	4,682	11,029	11/20/2047	1.A
..36179T-SH-9	GNMA #MA5020		09/01/2024	MBS PMT		2,689	2,689	2,776	2,695	0	(6)	0	(6)	0	2,689	0	0	0	73	02/20/2048	1.A
..36179U-GD-8	GNMA #MA5596		09/01/2024	MBS PMT		3,543	3,543	3,679	3,551	0	(8)	0	(8)	0	3,543	0	0	0	105	11/20/2048	1.A
..36179U-MN-9	GNMA #MA5765		09/01/2024	MBS PMT		4,118	4,118	4,509	4,147	0	(29)	0	(29)	0	4,118	0	0	0	136	02/20/2049	1.A
..36179V-N2-2	GNMA #MA6709		08/28/2024	VARIOUS		463,977	525,879	448,394	445,930	0	5,643	0	5,643	0	451,572	0	12,405	12,405	9,762	06/20/2050	1.A
..36179W-DS-4	GNMA #MA7313		09/01/2024	MBS PMT		51,907	51,907	53,701	52,013	0	(106)	0	(106)	0	51,907	0	0	0	1,041	04/20/2051	1.A
..36179W-TY-4	GNMA #MA7767		09/01/2024	MBS PMT		57,007	57,007	58,378	57,070	0	(63)	0	(63)	0	57,007	0	0	0	948	12/20/2051	1.A
..36179W-ZE-1	GNMA #MA7941		09/01/2024	MBS PMT		11,617	11,617	11,433	0	0	0	0	0	11,617	0	0	0	280	03/20/2052	1.A	
..36179X-QY-5	GNMA #MA8571		09/01/2024	MBS PMT		7,266	7,266	7,397	7,288	0	(22)	0	(22)	0	7,266	0	0	0	297	01/20/2053	1.A
..36202V-XU-0	GNMA #610991		09/01/2024	MBS PMT		374	374	371	373	0	0	0	0	0	374	0	0	0	13	06/15/2034	1.A
..3622A2-R3-8	GNMA #784106		09/01/2024	MBS PMT		13,129	13,129	14,007	13,184	0	(55)	0	(55)	0	13,129	0	0	0	308	01/20/2046	1.A
..3622AA-4S-0	GNMA #785433		09/01/2024	MBS PMT		18,130	18,130	18,921	18,172	0	(42)	0	(42)	0	18,130	0	0	0	299	04/20/2051	1.A
..3622AA-4V-3	GNMA #785436		09/01/2024	MBS PMT		44,158	44,158	40,667	43,912	0	246	0	246	0	44,158	0	0	0	730	04/20/2051	1.A
..3622AC-RZ-5	GNMA #786904		09/01/2024	MBS PMT		17,282	17,282	17,601	0	0	(4)	0	(4)	0	17,282	0	0	0	138	08/20/2053	1.A
..36291E-FM-5	GNMA #626092		09/01/2024	MBS PMT		197	197	200	197	0	0	0	0	0	197	0	0	0	7	03/15/2034	1.A
..36291S-PT-1	GNMA #636834		09/01/2024	MBS PMT		139	139	142	140	0	0	0	0	0	139	0	0	0	5	11/15/2034	1.A
..36295N-ND-5	GNMA #675488		09/01/2024	MBS PMT		317	317	316	316	0	0	0	0	0	317	0	0	0	12	06/15/2038	1.A
..36295Q-LK-4	GNMA #677230		09/01/2024	MBS PMT		3	3	3	3	0	0	0	0	0	3	0	0	0	0	08/15/2038	1.A
..36295S-C8-7	GNMA #678795		09/01/2024	MBS PMT		905	905	920	910	0	(5)	0	(5)	0	905	0	0	0	32	12/15/2037	1.A
..36296K-MW-9	GNMA #693473		09/01/2024	MBS PMT		89	89	89	89	0	0	0	0	0	89	0	0	0	3	06/15/2038	1.A
..36296U-HC-7	GNMA #701427		09/01/2024	MBS PMT		6	6	6	6	0	0	0	0	0	6	0	0	0	0	11/15/2038	1.A
..38378B-5S-4	GNMA 2013-15 AC		09/01/2024	MBS PMT		2,399	2,399	2,414	2,400	0	(1)	0	(1)	0	2,399	0	0	0	29	08/16/2051	1.A
..38378K-BX-6	GNMA 2013-21 AB		09/01/2024	MBS PMT		1,607	1,607	1,611	1,609	0	(2)	0	(2)	0	1,607	0	0	0	21	07/16/2051	1.A
..912810-RK-6	US TREASURY N/B		09/11/2024	NORTHERN TRUST		97,441	125,000	146,172	143,623	0	(517)	0	(517)	0	143,106	0	(45,664)	(45,664)	3,363	02/15/2045	1.A
..912810-ST-6	US TREASURY N/B		08/05/2024	NORTHERN TRUST		135,891	200,000	151,439	154,694	0	1,230	0	1,230	0	155,923	0	(20,033)	(20,033)	1,995	11/15/2040	1.A
..912828-YH-7	US TREASURY N/B		08/01/2024	MOS		2,981,250	3,000,000	3,087,539	3,021,907	0	(17,169)	0	(17,169)	0	3,004,739	0	(23,489)	(23,489)	37,746	09/30/2024	1.A
..91282C-CV-1	US TREASURY N/B		07/25/2024	NORTHERN TRUST		486,771	550,000	480,092	491,713	0	6,542	0	6,542	0	498,256	0	(11,484)	(11,484)	5,582	08/31/2028	1.A
..91282C-CX-7	US TREASURY N/B		08/01/2024	WAC		2,982,070	3,000,000	2,983,242	2,995,996	0	3,323	0	3,323	0	2,999,319	0	(17,248)	(17,248)	9,905	09/15/2024	1.A
..91282C-DJ-7	US TREASURY N/B		09/11/2024	NORTHERN TRUST		513,717	600,000	505,223	0	0	438	0	438	0	505,660	0	8,056	8,056	2,206	11/15/2031	1.A
..91282C-EE-7	US TREASURY N/B		08/09/2024	NORTHERN TRUST		375,594	400,000	356,126	357,902	0	4,403	0	4,403	0	362,305	0	13,289	13,289	8,228	03/31/2029	1.A
..91282C-ES-6	US TREASURY N/B		08/12/2024	NORTHERN TRUST		1,481,896	1,550,000	1,414,071	0	0	6,190	0	6,190	0	1,420,261	0	61,635	61,635	29,717	05/31/2029	1.A
..91282C-FH-9	US TREASURY N/B		09/25/2024	NORTHERN TRUST		593,602	600,000	583,852	0	0	773	0	773	0	584,624	0	8,977	8,977	10,722	08/31/2027	1.A
..91282C-GB-1	US TREASURY N/B		09/26/2024	NORTHERN TRUST		2,150,139	2,125,000	2,136,110	2,135,176	0	(995)	0	(995)	0	2,134,182	0	15,957	15,957	98,241	12/31/2029	1.A
..91282C-HT-1	US TREASURY N/B		08/28/2024	NORTHERN TRUST		1,706,773	1,700,000	1,648,965	0	0	2,036	0	2,036	0	1,651,001	0	55,773	55,773	35,444	08/15/2033	1.A
..91282C-HJ-8	US TREASURY N/B		08/09/2024	NORTHERN TRUST		956,568	950,000	938,125	939,172	0	2,424	0	2,424	0	941,596	0	14,972	14,972	41,220	08/15/2026	1.A
..91282C-HI-4	US TREASURY N/B		09/10/2024	NORTHERN TRUST		646,045	625,000	602,566	603,187	0	1,969	0	1,969	0	605,156	0	40,889	40,889	26,565	08/31/2030	1.A
..91282C-JX-0	US TREASURY N/B		07/15/2024	NORTHERN TRUST		322,017	325,000	313,003	0	0	212	0	212	0	313,215	0	8,802	8,802	5,964	01/31/2031	1.A
..91282C-KA-8	US TREASURY N/B		09/19/2024	NORTHERN TRUST		658,684	650,000	645,049	0	0	820	0	820	0	645,869	0	12,815	12,815	16,029	02/15/2027	1.A
..91282C-KQ-3	US TREASURY N/B		09/11/2024	NORTHERN TRUST		1,053,836	1,025,000	1,036,919	0	0	(10)	0	(10)	0	1,036,909	0	16,927	16,927	9,386	05/15/2034	1.A

E05

STATEMENT AS OF SEPTEMBER 30, 2024 OF THE Priority Health

SCHEDULE D - PART 4

Show All Long-Term Bonds and Stock Sold, Redeemed or Otherwise Disposed of During the Current Quarter

1	2	3	4	5	6	7	8	9	10	Change In Book/Adjusted Carrying Value					16	17	18	19	20	21	22
										11	12	13	14	15							
CUSIP Identification	Description	For-foreign	Disposal Date	Name of Purchaser	Number of Shares of Stock	Consideration	Par Value	Actual Cost	Prior Year Book/Adjusted Carrying Value	Unrealized Valuation Increase/(Decrease)	Current Year's (Amortization)/Accretion	Current Year's Other Than Temporary Impairment Recognized	Total Change in Book/Adjusted Carrying Value (11 + 12 - 13)	Total Foreign Exchange Change in Book /Adjusted Carrying Value	Book/Adjusted Carrying Value at Disposal Date	Foreign Exchange Gain (Loss) on Disposal	Realized Gain (Loss) on Disposal	Total Gain (Loss) on Disposal	Bond Interest/Stock Dividends Received During Year	Stated Contractual Maturity Date	NAIC Designation, NAIC Designation Modifier and SVO Administrative Symbol
0109999999	Subtotal - Bonds - U.S. Governments					18,626,674	19,035,397	18,531,883	12,313,585	0	19,539	0	19,539	0	18,509,098	0	117,576	117,576	375,263	XXX	XXX
..31283H-S9-7	FHLMC G01444		09/01/2024	MBS PMT		220	220	229	221	0	(1)	0	(1)	0	220	0	0	0	9	08/01/2032	1.A
..31287X-Z8-2	FHLMC C70767		09/01/2024	MBS PMT		275	275	285	276	0	(1)	0	(1)	0	275	0	0	0	11	09/01/2032	1.A
..3128K6-5B-2	FHLMC A46242		09/01/2024	MBS PMT		279	279	268	279	0	0	0	0	0	279	0	0	0	9	07/01/2035	1.A
..3128M4-K6-9	FHLMC G02717		09/01/2024	MBS PMT		138	138	136	138	0	0	0	0	0	138	0	0	0	5	02/01/2037	1.A
..3128M7-4V-5	FHLMC G05936		09/01/2024	MBS PMT		824	824	867	828	0	(4)	0	(4)	0	824	0	0	0	22	07/01/2040	1.A
..3128MJ-4L-1	FHLMC G08826		09/01/2024	MBS PMT		1,732	1,732	1,830	1,736	0	(5)	0	(5)	0	1,732	0	0	0	53	06/01/2039	1.A
..3128MJ-6A-3	FHLMC G08864		09/01/2024	MBS PMT		1,845	1,845	1,945	1,851	0	(6)	0	(6)	0	1,845	0	0	0	62	02/01/2049	1.A
..3128MJ-6H-8	FHLMC G08871		09/01/2024	MBS PMT		29,880	29,880	30,154	29,895	0	(16)	0	(16)	0	29,880	0	0	0	707	04/01/2049	1.A
..3128MJ-6P-0	FHLMC G08877		09/01/2024	MBS PMT		25,736	25,736	26,449	25,768	0	(32)	0	(32)	0	25,736	0	0	0	700	05/01/2049	1.A
..3128MJ-6P-4	FHLMC G08045		09/01/2024	MBS PMT		109	109	108	108	0	0	0	0	0	109	0	0	0	4	03/01/2035	1.A
..3128MJ-BQ-2	FHLMC G08046		09/01/2024	MBS PMT		758	758	770	759	0	(1)	0	(1)	0	758	0	0	0	29	03/01/2035	1.A
..3128MJ-CJ-7	FHLMC G08072		09/01/2024	MBS PMT		261	261	255	261	0	1	0	1	0	261	0	0	0	9	08/01/2035	1.A
..3128MJ-F4-7	FHLMC G08186		09/01/2024	MBS PMT		408	408	404	408	0	0	0	0	0	408	0	0	0	15	03/01/2037	1.A
..3128MJ-LL-2	FHLMC G08330		09/01/2024	MBS PMT		300	300	303	300	0	0	0	0	0	300	0	0	0	9	01/01/2039	1.A
..3128MJ-LX-6	FHLMC G08341		09/01/2024	MBS PMT		741	741	801	741	0	(5)	0	(5)	0	741	0	0	0	25	04/01/2039	1.A
..3128MJ-Q7-8	FHLMC G08477		09/01/2024	MBS PMT		1,883	1,883	1,946	1,886	0	(4)	0	(4)	0	1,883	0	0	0	43	02/01/2042	1.A
..3128MJ-QG-8	FHLMC G08454		09/01/2024	MBS PMT		1,952	1,952	2,028	1,957	0	(4)	0	(4)	0	1,952	0	0	0	54	07/01/2041	1.A
..3128MJ-S3-5	FHLMC G08537		09/01/2024	MBS PMT		10,611	10,611	10,427	10,599	0	11	0	11	0	10,611	0	0	0	213	07/01/2043	1.A
..3128MJ-SS-0	FHLMC G08528		09/01/2024	MBS PMT		4,218	4,218	4,377	4,227	0	(9)	0	(9)	0	4,218	0	0	0	84	04/01/2043	1.A
..3128MJ-T2-6	FHLMC G08568		09/01/2024	MBS PMT		488	488	526	490	0	(2)	0	(2)	0	488	0	0	0	15	01/01/2044	1.A
..3128MJ-T6-7	FHLMC G08572		09/01/2024	MBS PMT		6,655	6,655	6,644	6,655	0	1	0	1	0	6,655	0	0	0	157	02/01/2044	1.A
..3128MJ-US-7	FHLMC G08592		09/01/2024	MBS PMT		4,345	4,345	4,587	4,359	0	(14)	0	(14)	0	4,345	0	0	0	118	06/01/2044	1.A
..3128MJ-VH-0	FHLMC G08615		09/01/2024	MBS PMT		3,784	3,784	3,916	3,790	0	(6)	0	(6)	0	3,784	0	0	0	89	11/01/2044	1.A
..3128MJ-VJ-6	FHLMC G08616		09/01/2024	MBS PMT		2,980	2,980	3,183	2,991	0	(11)	0	(11)	0	2,980	0	0	0	79	11/01/2044	1.A
..3128MJ-VQ-0	FHLMC G08622		09/01/2024	MBS PMT		2,751	2,751	2,861	2,758	0	(7)	0	(7)	0	2,751	0	0	0	55	01/01/2045	1.A
..3128MJ-WL-0	FHLMC G08650		09/01/2024	MBS PMT		5,867	5,867	6,044	5,876	0	(9)	0	(9)	0	5,867	0	0	0	138	06/01/2045	1.A
..3128MJ-WV-8	FHLMC G08659		09/01/2024	MBS PMT		2,823	2,823	2,936	2,828	0	(6)	0	(6)	0	2,823	0	0	0	65	08/01/2045	1.A
..3128MJ-XE-5	FHLMC G08676		09/01/2024	MBS PMT		5,470	5,470	5,674	5,481	0	(11)	0	(11)	0	5,470	0	0	0	127	11/01/2045	1.A
..3128MJ-XK-1	FHLMC G08681		09/01/2024	MBS PMT		5,113	5,113	5,187	5,117	0	(4)	0	(4)	0	5,113	0	0	0	119	12/01/2045	1.A
..3128MJ-XL-9	FHLMC G08682		09/01/2024	MBS PMT		5,137	5,137	5,609	5,169	0	(32)	0	(32)	0	5,137	0	0	0	141	12/01/2045	1.A
..3128MJ-XX-3	FHLMC G08693		09/01/2024	MBS PMT		8,799	8,799	9,052	8,813	0	(14)	0	(14)	0	8,799	0	0	0	205	03/01/2046	1.A
..3128MJ-Y6-1	FHLMC G08732		09/01/2024	MBS PMT		6,810	6,810	7,016	6,821	0	(11)	0	(11)	0	6,810	0	0	0	136	11/01/2046	1.A
..3128MJ-YD-6	FHLMC G08707		09/01/2024	MBS PMT		5,306	5,306	5,744	5,333	0	(27)	0	(27)	0	5,306	0	0	0	143	05/01/2046	1.A
..3128MJ-YH-7	FHLMC G08711		09/01/2024	MBS PMT		3,484	3,484	3,660	3,493	0	(9)	0	(9)	0	3,484	0	0	0	81	06/01/2046	1.A
..3128MJ-YM-6	FHLMC G08715		09/01/2024	MBS PMT		4,328	4,328	4,481	4,336	0	(8)	0	(8)	0	4,328	0	0	0	87	08/01/2046	1.A
..3128MJ-ZP-8	FHLMC G08749		09/01/2024	MBS PMT		2,328	2,328	2,446	2,334	0	(6)	0	(6)	0	2,328	0	0	0	63	02/01/2047	1.A
..3128MM-RF-2	FHLMC G18485		09/01/2024	MBS PMT		6,922	6,922	6,997	6,931	0	(8)	0	(8)	0	6,922	0	0	0	116	10/01/2028	1.A
..3128MM-RN-5	FHLMC G18492		09/01/2024	MBS PMT		6,354	6,354	6,482	6,368	0	(14)	0	(14)	0	6,354	0	0	0	126	01/01/2029	1.A
..3128P7-6T-5	FHLMC C91782		09/01/2024	MBS PMT		4,379	4,379	4,549	4,392	0	(13)	0	(13)	0	4,379	0	0	0	101	08/01/2034	1.A
..3128P7-7E-7	FHLMC C91793		09/01/2024	MBS PMT		7,789	7,789	7,987	7,812	0	(22)	0	(22)	0	7,789	0	0	0	181	10/01/2034	1.A
..31292H-R7-1	FHLMC C01410		09/01/2024	MBS PMT		43	43	45	44	0	0	0	0	0	43	0	0	0	2	10/01/2032	1.A
..31292H-RZ-9	FHLMC C01404		09/01/2024	MBS PMT		144	144	150	145	0	0	0	0	0	144	0	0	0	6	10/01/2032	1.A
..31292J-BQ-2	FHLMC C01847		09/01/2024	MBS PMT		263	263	260	263	0	0	0	0	0	263	0	0	0	10	06/01/2034	1.A
..31292J-BR-0	FHLMC C01848		09/01/2024	MBS PMT		501	501	513	502	0	(1)	0	(1)	0	501	0	0	0	20	06/01/2034	1.A
..31292S-AD-2	FHLMC C09004		09/01/2024	MBS PMT		6,580	6,580	6,973	6,600	0	(21)	0	(21)	0	6,580	0	0	0	155	07/01/2042	1.A

STATEMENT AS OF SEPTEMBER 30, 2024 OF THE Priority Health

SCHEDULE D - PART 4

Show All Long-Term Bonds and Stock Sold, Redeemed or Otherwise Disposed of During the Current Quarter

1	2	3	4	5	6	7	8	9	10	Change In Book/Adjusted Carrying Value					16	17	18	19	20	21	22
										11	12	13	14	15							
CUSIP Ident-ification	Description	For-ign	Disposal Date	Name of Purchaser	Number of Shares of Stock	Consid-eration	Par Value	Actual Cost	Prior Year Book/ Adjusted Carrying Value	Unrealized Valuation Increase/ (Decrease)	Current Year's (Amor-tization)/ Accretion	Current Year's Other Than Temporary Impairment Recogn-ized	Total Change in Book/ Adjusted Carrying Value (11 + 12 - 13)	Total Foreign Exchange Change in Book /Adjusted Carrying Value	Book/ Adjusted Carrying Value at Disposal Date	Foreign Exchange Gain (Loss) on Disposal	Realized Gain (Loss) on Disposal	Total Gain (Loss) on Disposal	Bond Interest/ Stock Dividends Received During Year	Stated Con-tractual Maturity Date	NAIC Design-ation, NAIC Design-ation Modifier and SVO Admini-strative Symbol
..31292S-BK-5	FHLMC C09042		09/01/2024	MBS PMT		5,679	5,679	5,739	5,683	0	(3)	0	(3)	0	5,679	0	0	0	135	05/01/2043	1.A
..312941-3N-5	FHLMC A93505		09/01/2024	MBS PMT		835	835	855	836	0	(1)	0	(1)	0	835	0	0	0	25	08/01/2040	1.A
..31297C-KU-3	FHLMC A24807		09/01/2024	MBS PMT		374	374	369	373	0	0	0	0	0	374	0	0	0	12	07/01/2034	1.A
..31297C-ZQ-6	FHLMC A25251		09/01/2024	MBS PMT		86	86	89	86	0	0	0	0	0	86	0	0	0	3	08/01/2034	1.A
..31297E-UN-4	FHLMC A26889		09/01/2024	MBS PMT		147	147	149	147	0	0	0	0	0	147	0	0	0	5	09/01/2034	1.A
..31297G-FG-1	FHLMC A28267		09/01/2024	MBS PMT		983	983	999	984	0	(1)	0	(1)	0	983	0	0	0	36	11/01/2034	1.A
..31297N-TA-4	FHLMC A33245		09/01/2024	MBS PMT		84	84	81	84	0	0	0	0	0	84	0	0	0	3	02/01/2035	1.A
..31329J-MB-0	FHLMC #ZA1254		09/01/2024	MBS PMT		11,745	11,745	10,292	11,616	0	129	0	129	0	11,745	0	0	0	242	10/01/2042	1.A
..31329N-G3-6	FHLMC ZA4718		09/01/2024	MBS PMT		6,533	6,533	6,727	6,545	0	(12)	0	(12)	0	6,533	0	0	0	130	10/01/2046	1.A
..3132A5-G9-0	FHLMC ZS4724		09/01/2024	MBS PMT		5,266	5,266	5,782	5,300	0	(34)	0	(34)	0	5,266	0	0	0	159	06/01/2047	1.A
..3132A5-H0-1	FHLMC ZS4739		09/01/2024	MBS PMT		8,660	8,660	9,212	8,694	0	(34)	0	(34)	0	8,660	0	0	0	200	10/01/2047	1.A
..3132AD-ME-5	FHLMC ZT1257		09/01/2024	MBS PMT		4,285	4,285	4,647	4,313	0	(28)	0	(28)	0	4,285	0	0	0	86	01/01/2046	1.A
..3132CII-NJ-9	FHLMC SB0393		09/01/2024	MBS PMT		20,292	20,292	21,139	20,374	0	(82)	0	(82)	0	20,292	0	0	0	271	07/01/2035	1.A
..3132CII-Q0-0	FHLMC SB0463		09/01/2024	MBS PMT		23,160	23,160	21,651	22,969	0	190	0	190	0	23,160	0	0	0	387	01/01/2036	1.A
..3132D5-3Y-6	FHLMC SB8015		09/01/2024	MBS PMT		10,171	10,171	10,463	10,198	0	(27)	0	(27)	0	10,171	0	0	0	169	11/01/2034	1.A
..3132D5-4R-0	FHLMC SB8032		09/01/2024	MBS PMT		8,983	8,983	9,257	9,011	0	(28)	0	(28)	0	8,983	0	0	0	177	02/01/2035	1.A
..3132D6-AG-5	FHLMC SB8107		09/01/2024	MBS PMT		96,949	96,949	100,236	97,224	0	(275)	0	(275)	0	96,949	0	0	0	1,291	06/01/2036	1.A
..3132D9-DU-5	FHLMC SC0115		09/01/2024	MBS PMT		12,408	12,408	11,105	12,314	0	94	0	94	0	12,408	0	0	0	165	01/01/2041	1.A
..3132D9-GR-9	FHLMC SC0208		09/01/2024	MBS PMT		10,613	10,613	10,313	10,595	0	19	0	19	0	10,613	0	0	0	144	11/01/2041	1.A
..3132D9-HT-4	FHLMC SC0242		09/01/2024	MBS PMT		18,777	18,777	17,243	18,663	0	114	0	114	0	18,777	0	0	0	312	02/01/2042	1.A
..3132DM-BG-9	FHLMC SD0039		09/01/2024	MBS PMT		5,223	5,223	5,580	5,248	0	(25)	0	(25)	0	5,223	0	0	0	143	02/01/2046	1.A
..3132DM-JA-4	FHLMC SD0257		09/01/2024	MBS PMT		21,136	21,136	22,582	21,193	0	(57)	0	(57)	0	21,136	0	0	0	424	01/01/2050	1.A
..3132DM-N7-6	FHLMC SD0414		09/01/2024	MBS PMT		22,187	22,187	23,463	22,239	0	(51)	0	(51)	0	22,187	0	0	0	358	08/01/2050	1.A
..3132DM-VF-9	FHLMC SD0614		09/01/2024	MBS PMT		8,221	8,221	8,449	8,233	0	(12)	0	(12)	0	8,221	0	0	0	133	05/01/2051	1.A
..3132DN-F8-1	FHLMC SD1091		09/01/2024	MBS PMT		55,277	55,277	46,416	54,676	0	601	0	601	0	55,277	0	0	0	726	05/01/2052	1.A
..3132DN-UW-1	FHLMC SD1497		09/01/2024	MBS PMT		13,869	13,869	12,300	13,745	0	124	0	124	0	13,869	0	0	0	279	04/01/2043	1.A
..3132DP-3N-6	FHLMC SD2605		09/01/2024	MBS PMT		24,424	24,424	24,656	24,440	0	(16)	0	(16)	0	24,424	0	0	0	849	04/01/2053	1.A
..3132DP-M6-2	FHLMC SD2181		09/01/2024	MBS PMT		16,328	16,328	16,604	16,355	0	(26)	0	(26)	0	16,328	0	0	0	611	01/01/2053	1.A
..3132DP-NZ-8	FHLMC SD2176		09/01/2024	MBS PMT		7,122	7,122	7,397	7,141	0	(19)	0	(19)	0	7,122	0	0	0	285	01/01/2053	1.A
..3132DP-UP-1	FHLMC SD2390		09/01/2024	MBS PMT		49,895	49,895	49,724	49,887	0	8	0	8	0	49,895	0	0	0	1,668	03/01/2053	1.A
..3132DQ-GL-4	FHLMC SD2903		09/01/2024	MBS PMT		12,154	12,154	9,000	11,952	0	202	0	202	0	12,154	0	0	0	162	03/01/2051	1.A
..3132DS-BN-1	FHLMC SD4545		09/01/2024	MBS PMT		71,716	71,716	72,091	0	0	(44)	0	(44)	0	71,716	0	0	0	2,142	12/01/2053	1.A
..3132DS-K2-7	FHLMC SD4813		09/01/2024	MBS PMT		50,200	50,200	51,573	0	0	(123)	0	(123)	0	50,200	0	0	0	1,533	02/01/2054	1.A
..3132DV-3P-8	FHLMC SD8006		09/01/2024	MBS PMT		8,512	8,512	8,512	8,531	0	(19)	0	(19)	0	8,512	0	0	0	220	08/01/2049	1.A
..3132DV-5X-9	FHLMC SD8062		09/01/2024	MBS PMT		7,052	7,052	7,446	7,072	0	(20)	0	(20)	0	7,052	0	0	0	141	05/01/2050	1.A
..3132DV-K5-3	FHLMC SD7516		09/01/2024	MBS PMT		7,197	7,197	7,885	7,238	0	(42)	0	(42)	0	7,197	0	0	0	191	05/01/2050	1.A
..3132DV-K7-9	FHLMC SD7518		09/01/2024	MBS PMT		8,742	8,742	9,311	8,774	0	(32)	0	(32)	0	8,742	0	0	0	176	06/01/2050	1.A
..3132DV-KU-8	FHLMC SD7507		09/01/2024	MBS PMT		9,449	9,449	10,164	9,490	0	(41)	0	(41)	0	9,449	0	0	0	188	11/01/2049	1.A
..3132DV-L5-2	FHLMC SD7548		09/01/2024	MBS PMT		15,566	15,566	15,762	15,578	0	(12)	0	(12)	0	15,566	0	0	0	260	11/01/2051	1.A
..3132DV-LP-8	FHLMC SD7534		09/01/2024	MBS PMT		22,619	22,619	19,231	22,411	0	208	0	208	0	22,619	0	0	0	378	02/01/2051	1.A
..3132DV-LR-4	FHLMC SD7536		09/01/2024	MBS PMT		12,352	12,352	12,402	12,354	0	(3)	0	(3)	0	12,352	0	0	0	206	02/01/2051	1.A
..3132DV-LT-0	FHLMC SD7538		09/01/2024	MBS PMT		9,122	9,122	9,269	9,131	0	(8)	0	(8)	0	9,122	0	0	0	122	04/01/2051	1.A
..3132DII-AH-6	FHLMC SD8108		09/01/2024	MBS PMT		25,506	25,506	26,995	25,576	0	(70)	0	(70)	0	25,506	0	0	0	494	11/01/2050	1.A
..3132DII-BR-3	FHLMC SD8148		09/01/2024	MBS PMT		124,325	124,325	130,293	124,673	0	(349)	0	(349)	0	124,325	0	0	0	2,510	05/01/2051	1.A
..3132DII-BY-8	FHLMC SD8155		09/01/2024	MBS PMT		91,764	91,764	92,750	91,805	0	(41)	0	(41)	0	91,764	0	0	0	1,220	07/01/2051	1.A
..3132DII-CK-6	FHLMC SD8206		09/01/2024	MBS PMT		135,804	135,804	138,409	135,926	0	(122)	0	(122)	0	135,804	0	0	0	2,711	04/01/2052	1.A

STATEMENT AS OF SEPTEMBER 30, 2024 OF THE Priority Health

SCHEDULE D - PART 4

Show All Long-Term Bonds and Stock Sold, Redeemed or Otherwise Disposed of During the Current Quarter

1	2	3	4	5	6	7	8	9	10	Change In Book/Adjusted Carrying Value					16	17	18	19	20	21	22
										11	12	13	14	15							
CUSIP Ident-ification	Description	For-ign	Disposal Date	Name of Purchaser	Number of Shares of Stock	Consid-eration	Par Value	Actual Cost	Prior Year Book/ Adjusted Carrying Value	Unrealized Valuation Increase/ (Decrease)	Current Year's (Amor-tization)/ Accretion	Current Year's Other Than Temporary Impairment Recogn-ized	Total Change in Book/ Adjusted Carrying Value (11 + 12 - 13)	Total Foreign Exchange Change in Book /Adjusted Carrying Value	Book/ Adjusted Carrying Value at Disposal Date	Foreign Exchange Gain (Loss) on Disposal	Realized Gain (Loss) on Disposal	Total Gain (Loss) on Disposal	Bond Interest/ Stock Dividends Received During Year	Stated Con-tractual Maturity Date	NAIC Design-ation, NAIC Design-ation Modifier and SVO Admini-strative Symbol
..3132E0-KT-8	FHLMC S03906		09/01/2024	MBS PMT		5,611	5,611	5,610	0	0	0	0	0	0	5,611	0	0	0	86	10/01/2053	1.A
..3132FC-EB-7	FHLMC Z40130		09/01/2024	MBS PMT		7,251	7,251	7,401	7,262	0	(11)	0	(11)	0	7,251	0	0	0	145	01/01/2046	1.A
..3132H3-XT-5	FHLMC U09069		09/01/2024	MBS PMT		12,702	12,702	13,078	12,740	0	(38)	0	(38)	0	12,702	0	0	0	293	06/01/2042	1.A
..3132HM-F2-5	FHLMC Q47384		09/01/2024	MBS PMT		10,069	10,069	10,630	10,123	0	(54)	0	(54)	0	10,069	0	0	0	280	04/01/2047	1.A
..3132XC-R9-8	FHLMC G67712		09/01/2024	MBS PMT		15,357	15,357	16,039	15,402	0	(45)	0	(45)	0	15,357	0	0	0	412	06/01/2048	1.A
..3132XU-KF-1	FHLMC Q52093		09/01/2024	MBS PMT		7,062	7,062	7,267	7,069	0	(7)	0	(7)	0	7,062	0	0	0	167	11/01/2047	1.A
..3132XU-V3-6	FHLMC Q52433		09/01/2024	MBS PMT		16,288	16,288	16,970	16,331	0	(43)	0	(43)	0	16,288	0	0	0	542	11/01/2047	1.A
..31335A-FW-3	FHLMC G60181		09/01/2024	MBS PMT		3,839	3,839	4,084	3,854	0	(15)	0	(15)	0	3,839	0	0	0	115	01/01/2045	1.A
..31335H-SF-6	FHLMC C90846		08/01/2024	MBS PMT		107	107	109	107	0	0	0	0	0	107	0	0	0	4	08/01/2024	1.A
..3133A0-MH-1	FHLMC QA5773		09/01/2024	MBS PMT		7,074	7,074	7,179	7,084	0	(10)	0	(10)	0	7,074	0	0	0	142	01/01/2050	1.A
..3133D3-PP-4	FHLMC QK0430		09/01/2024	MBS PMT		13,566	13,566	14,034	13,591	0	(25)	0	(25)	0	13,566	0	0	0	178	09/01/2040	1.A
..3133KH-ZD-7	FHLMC RA2572		09/01/2024	MBS PMT		26,390	26,390	28,139	26,510	0	(120)	0	(120)	0	26,390	0	0	0	663	05/01/2050	1.A
..3133KL-AZ-0	FHLMC RA4524		09/01/2024	MBS PMT		7,475	7,475	5,691	0	0	3	0	3	0	7,475	0	0	0	12	02/01/2051	1.A
..3133KL-B7-1	FHLMC RA4562		09/01/2024	MBS PMT		10,085	10,085	10,789	10,117	0	(32)	0	(32)	0	10,085	0	0	0	170	02/01/2051	1.A
..3133KN-2Y-8	FHLMC RA7091		09/01/2024	MBS PMT		70,935	70,935	64,340	70,728	0	206	0	206	0	70,935	0	0	0	1,142	03/01/2052	1.A
..3133KY-UK-3	FHLMC RB5086		09/01/2024	MBS PMT		13,410	13,410	11,849	13,291	0	119	0	119	0	13,410	0	0	0	227	11/01/2042	1.A
..3133KY-UN-7	FHLMC RB5089		09/01/2024	MBS PMT		11,628	11,628	9,740	11,500	0	127	0	127	0	11,628	0	0	0	116	12/01/2040	1.A
..3133KY-V7-1	FHLMC RB5138		09/01/2024	MBS PMT		20,753	20,753	18,676	20,619	0	134	0	134	0	20,753	0	0	0	278	12/01/2041	1.A
..3133KY-WH-8	FHLMC RB5148		09/01/2024	MBS PMT		13,806	13,806	12,317	13,722	0	84	0	84	0	13,806	0	0	0	184	03/01/2042	1.A
..31346Y-GG-2	FHLMC QA4699		09/01/2024	MBS PMT		6,223	6,223	6,318	6,228	0	(4)	0	(4)	0	6,223	0	0	0	121	11/01/2049	1.A
..3136BS-R6-4	FNR 2024-6A FG		09/25/2024	MBS PMT		9,855	9,855	9,855	0	0	0	0	0	0	9,855	0	0	0	53	09/25/2054	1.A
..31371H-D9-6	FNMA #252228		09/01/2024	MBS PMT		63	63	66	63	0	0	0	0	0	63	0	0	0	3	12/01/2028	1.A
..31371K-WK-3	FNMA #254550		09/01/2024	MBS PMT		363	363	376	364	0	(1)	0	(1)	0	363	0	0	0	15	12/01/2032	1.A
..31371L-SJ-9	FNMA #255321		07/01/2024	MBS PMT		4	4	4	4	0	0	0	0	0	4	0	0	0	1	07/01/2024	1.A
..31371L-Z2-8	FNMA #255561		09/01/2024	MBS PMT		278	278	282	278	0	0	0	0	0	278	0	0	0	11	12/01/2024	1.A
..31371M-GF-8	FNMA #255898		09/01/2024	MBS PMT		723	723	690	721	0	2	0	2	0	723	0	0	0	25	10/01/2035	1.A
..31371M-MG-9	FNMA #256059		09/01/2024	MBS PMT		103	103	103	103	0	0	0	0	0	103	0	0	0	4	01/01/2036	1.A
..31371N-CJ-2	FNMA #256673		09/01/2024	MBS PMT		282	282	269	280	0	1	0	1	0	282	0	0	0	10	04/01/2037	1.A
..31371N-DR-3	FNMA #256712		09/01/2024	MBS PMT		312	312	313	312	0	0	0	0	0	312	0	0	0	13	05/01/2037	1.A
..31371N-P2-5	FNMA #257041		09/01/2024	MBS PMT		192	192	191	192	0	0	0	0	0	192	0	0	0	7	01/01/2038	1.A
..31374G-WG-8	FNMA #313947		09/01/2024	MBS PMT		33	33	35	33	0	0	0	0	0	33	0	0	0	2	01/01/2028	1.A
..3137BK-GK-0	FHMS K151 A3		07/15/2024	NORTHERN TRUST		402,754	425,000	509,253	480,356	0	(4,897)	0	(4,897)	0	475,459	0	(72,705)	(72,705)	9,326	04/25/2030	1.A
..3137F3-CW-2	FHLMC 4768 FG		09/15/2024	MBS PMT		8,788	8,788	8,744	8,765	0	23	0	23	0	8,788	0	0	0	343	03/15/2048	1.A
..3137FK-BB-1	FHLMC 4852 BF		09/15/2024	MBS PMT		7,862	7,862	7,860	7,860	0	17	0	17	0	7,862	0	0	0	307	12/15/2048	1.A
..3137FM-CF-7	FHMS KC04 ASB		09/01/2024	MBS PMT		31,599	31,599	31,519	31,586	0	13	0	13	0	31,599	0	0	0	523	12/25/2028	1.A
..3137FU-AH-7	FHLMC 5002		09/25/2024	MBS PMT		6,107	6,107	6,109	6,107	0	0	0	0	0	6,107	0	0	0	238	07/25/2050	1.A
..3137FU-KP-8	FHLMC 4989 FA		08/01/2024	VARIOUS		5,490	5,490	5,474	5,488	0	2	0	2	0	5,490	0	0	0	212	08/15/2040	1.A
..3137FU-KQ-6	FHLMC 4989 FB		08/01/2024	VARIOUS		5,823	5,823	5,801	5,821	0	2	0	2	0	5,823	0	0	0	225	10/15/2040	1.A
..3137HD-YP-9	FHR 5440 KF		09/25/2024	MBS PMT		24,842	24,842	24,842	0	0	0	0	0	0	24,842	0	0	0	185	07/25/2054	1.A
..31385J-RN-0	FNMA #545993		09/01/2024	MBS PMT		128	128	131	128	0	0	0	0	0	128	0	0	0	5	11/01/2032	1.A
..31385W-2S-7	FNMA #555285		09/01/2024	MBS PMT		142	142	144	142	0	0	0	0	0	142	0	0	0	6	03/01/2033	1.A
..31385X-BD-8	FNMA #555436		09/01/2024	MBS PMT		494	494	512	496	0	(2)	0	(2)	0	494	0	0	0	19	05/01/2033	1.A
..31385X-NR-4	FNMA #555800		09/01/2024	MBS PMT		366	366	369	366	0	0	0	0	0	366	0	0	0	13	10/01/2033	1.A
..31388K-GA-4	FNMA #606893		09/01/2024	MBS PMT		52	52	53	52	0	0	0	0	0	52	0	0	0	2	10/01/2031	1.A
..31388L-CB-1	FNMA #607695		09/01/2024	MBS PMT		21	21	22	21	0	0	0	0	0	21	0	0	0	1	11/01/2031	1.A
..3138A2-AX-7	FNMA #AH0921		09/01/2024	MBS PMT		2,759	2,759	2,857	2,766	0	(8)	0	(8)	0	2,759	0	0	0	76	12/01/2040	1.A

STATEMENT AS OF SEPTEMBER 30, 2024 OF THE Priority Health

SCHEDULE D - PART 4

Show All Long-Term Bonds and Stock Sold, Redeemed or Otherwise Disposed of During the Current Quarter

1	2	3	4	5	6	7	8	9	10	Change In Book/Adjusted Carrying Value					16	17	18	19	20	21	22
										11	12	13	14	15							
CUSIP Identification	Description	For-foreign	Disposal Date	Name of Purchaser	Number of Shares of Stock	Consideration	Par Value	Actual Cost	Prior Year Book/Adjusted Carrying Value	Unrealized Valuation Increase/(Decrease)	Current Year's (Amortization)/Accretion	Current Year's Other Than Temporary Impairment Recognized	Total Change in Book/Adjusted Carrying Value (11 + 12 - 13)	Total Foreign Exchange Change in Book /Adjusted Carrying Value	Book/Adjusted Carrying Value at Disposal Date	Foreign Exchange Gain (Loss) on Disposal	Realized Gain (Loss) on Disposal	Total Gain (Loss) on Disposal	Bond Interest/Stock Dividends Received During Year	Stated Contractual Maturity Date	NAIC Designation, NAIC Designation Modifier and SVO Administrative Symbol
..3138A2-BQ-1	FNMA #AH0946		09/01/2024	MBS PMT		2,165	2,165	2,164	2,165	0	0	0	0	0	2,165	0	0	0	59	12/01/2040	1.A
..3138A4-J8-9	FNMA #AH2986		09/01/2024	MBS PMT		1,221	1,221	1,286	1,225	0	(4)	0	(4)	0	1,221	0	0	0	32	02/01/2041	1.A
..3138A5-FX-5	FNMA #AH3781		09/01/2024	MBS PMT		1,384	1,384	1,348	1,381	0	3	0	3	0	1,384	0	0	0	39	02/01/2041	1.A
..3138AF-C2-4	FNMA #A11888		09/01/2024	MBS PMT		823	823	856	825	0	(2)	0	(2)	0	823	0	0	0	25	05/01/2041	1.A
..3138AH-XV-3	FNMA #A14291		09/01/2024	MBS PMT		1,001	1,001	1,040	1,004	0	(3)	0	(3)	0	1,001	0	0	0	30	06/01/2041	1.A
..3138EG-FA-7	FNMA #AL0160		09/01/2024	MBS PMT		3,515	3,515	3,725	3,534	0	(19)	0	(19)	0	3,515	0	0	0	106	05/01/2041	1.A
..3138EL-A4-5	FNMA #AL3626		09/01/2024	MBS PMT		3,825	3,825	4,098	3,840	0	(15)	0	(15)	0	3,825	0	0	0	104	09/01/2042	1.A
..3138EP-A3-8	FNMA #AL6325		09/01/2024	MBS PMT		5,687	5,687	5,798	5,693	0	(6)	0	(6)	0	5,687	0	0	0	112	10/01/2044	1.A
..3138EQ-QG-0	FNMA #AL7654		09/01/2024	MBS PMT		8,632	8,632	9,018	8,668	0	(35)	0	(35)	0	8,632	0	0	0	173	09/01/2035	1.A
..3138ET-6A-9	FNMA #AL8964		09/01/2024	MBS PMT		2,957	2,957	3,126	2,967	0	(10)	0	(10)	0	2,957	0	0	0	88	06/01/2045	1.A
..3138LY-5E-3	FNMA #A08044		09/01/2024	MBS PMT		4,172	4,172	4,254	4,178	0	(6)	0	(6)	0	4,172	0	0	0	98	07/01/2042	1.A
..3138WD-WT-4	FNMA #AS4257		09/01/2024	MBS PMT		2,685	2,685	2,843	2,698	0	(13)	0	(13)	0	2,685	0	0	0	72	01/01/2045	1.A
..3138WK-NL-5	FNMA #AS9394		09/01/2024	MBS PMT		2,193	2,193	2,361	2,203	0	(10)	0	(10)	0	2,193	0	0	0	62	04/01/2047	1.A
..3138WQ-AX-0	FNMA #AT2721		09/01/2024	MBS PMT		12,024	12,024	11,944	12,019	0	5	0	5	0	12,024	0	0	0	245	05/01/2043	1.A
..3138X0-Y3-6	FNMA #AU1629		09/01/2024	MBS PMT		18,138	18,138	18,068	18,134	0	4	0	4	0	18,138	0	0	0	369	07/01/2043	1.A
..3138X0-ZA-9	FNMA #AU1636		09/01/2024	MBS PMT		2,909	2,909	3,049	2,916	0	(7)	0	(7)	0	2,909	0	0	0	69	07/01/2043	1.A
..3138YU-H7-9	FNMA #AZ2953		09/01/2024	MBS PMT		10,042	10,042	10,471	10,085	0	(43)	0	(43)	0	10,042	0	0	0	201	09/01/2030	1.A
..3138YU-HN-4	FNMA #AZ2936		09/01/2024	MBS PMT		6,721	6,721	6,734	6,722	0	(1)	0	(1)	0	6,721	0	0	0	136	09/01/2045	1.A
..31391D-DD-2	FNMA #663500		09/01/2024	MBS PMT		624	624	632	624	0	0	0	0	0	624	0	0	0	23	10/01/2032	1.A
..31391J-JM-3	FNMA #668168		09/01/2024	MBS PMT		169	169	174	169	0	0	0	0	0	169	0	0	0	7	11/01/2032	1.A
..31400W-T7-5	FNMA #699974		09/01/2024	MBS PMT		36	36	37	36	0	0	0	0	0	36	0	0	0	1	04/01/2033	1.A
..31401W-V9-7	FNMA #720740		09/01/2024	MBS PMT		73	73	74	73	0	0	0	0	0	73	0	0	0	2	07/01/2033	1.A
..31402Q-CF-6	FNMA #734570		09/01/2024	MBS PMT		86	86	85	86	0	0	0	0	0	86	0	0	0	3	08/01/2033	1.A
..31402R-JV-2	FNMA #735676		09/01/2024	MBS PMT		1,778	1,778	1,908	1,790	0	(11)	0	(11)	0	1,778	0	0	0	59	07/01/2035	1.A
..31402W-LY-2	FNMA #740243		09/01/2024	MBS PMT		124	124	126	124	0	0	0	0	0	124	0	0	0	5	10/01/2033	1.A
..31403D-T8-2	FNMA #745875		09/01/2024	MBS PMT		187	187	189	187	0	0	0	0	0	187	0	0	0	8	09/01/2036	1.A
..31403V-GR-4	FNMA #759008		09/01/2024	MBS PMT		184	184	182	184	0	0	0	0	0	184	0	0	0	6	01/01/2034	1.A
..31404D-QG-6	FNMA #765555		09/01/2024	MBS PMT		170	170	168	169	0	1	0	1	0	170	0	0	0	6	12/01/2033	1.A
..31405C-UT-4	FNMA #785494		09/01/2024	MBS PMT		506	506	502	506	0	0	0	0	0	506	0	0	0	17	06/01/2034	1.A
..31405H-5G-9	FNMA #790247		09/01/2024	MBS PMT		44	44	43	44	0	0	0	0	0	44	0	0	0	1	08/01/2034	1.A
..31405N-S8-9	FNMA #794443		09/01/2024	MBS PMT		328	328	332	328	0	0	0	0	0	328	0	0	0	12	10/01/2034	1.A
..31406B-EU-0	FNMA #804847		09/01/2024	MBS PMT		217	217	210	217	0	0	0	0	0	217	0	0	0	7	01/01/2035	1.A
..31406K-E9-7	FNMA #812060		09/01/2024	MBS PMT		419	419	417	419	0	0	0	0	0	419	0	0	0	14	03/01/2035	1.A
..31407B-U6-4	FNMA #826005		09/01/2024	MBS PMT		82	82	79	82	0	0	0	0	0	82	0	0	0	3	07/01/2035	1.A
..31407Y-R6-8	FNMA #844809		09/01/2024	MBS PMT		238	238	232	238	0	0	0	0	0	238	0	0	0	8	11/01/2035	1.A
..31408B-2X-5	FNMA #846890		09/01/2024	MBS PMT		86	86	85	86	0	0	0	0	0	86	0	0	0	3	12/01/2035	1.A
..31408D-UQ-5	FNMA #848491		09/01/2024	MBS PMT		643	643	631	642	0	1	0	1	0	643	0	0	0	24	12/01/2035	1.A
..3140EB-7J-4	FNMA #BA7196		09/01/2024	MBS PMT		1,913	1,913	1,951	1,919	0	(5)	0	(5)	0	1,913	0	0	0	51	12/01/2045	1.A
..3140FX-HH-8	FNMA #BF0231		09/01/2024	MBS PMT		4,572	4,572	4,704	4,585	0	(13)	0	(13)	0	4,572	0	0	0	93	04/01/2042	1.A
..3140FX-HT-2	FNMA #BF0241		09/01/2024	MBS PMT		4,180	4,180	4,460	4,201	0	(21)	0	(21)	0	4,180	0	0	0	99	05/01/2052	1.A
..3140FX-K6-8	FNMA #BF0316		09/01/2024	MBS PMT		10,362	10,362	9,478	0	0	9	0	9	0	10,362	0	0	0	122	07/01/2052	1.A
..3140FX-L3-4	FNMA #BF0345		09/01/2024	MBS PMT		7,805	7,805	8,018	7,821	0	(16)	0	(16)	0	7,805	0	0	0	154	10/01/2043	1.A
..3140FX-RW-4	FNMA #BF0500		09/01/2024	MBS PMT		9,453	9,453	8,561	9,407	0	46	0	46	0	9,453	0	0	0	194	12/01/2054	1.A
..3140GQ-3C-8	FNMA #BH2594		09/01/2024	MBS PMT		5,341	5,341	5,688	5,365	0	(25)	0	(25)	0	5,341	0	0	0	117	08/01/2047	1.A
..3140GS-RX-2	FNMA #BH4101		09/01/2024	MBS PMT		6,766	6,766	6,907	6,772	0	(7)	0	(7)	0	6,766	0	0	0	159	10/01/2047	1.A
..3140H9-MK-6	FNMA #BJ7561		09/01/2024	MBS PMT		3,523	3,523	3,668	3,526	0	(7)	0	(7)	0	3,523	0	0	0	106	11/01/2048	1.A

E05.4

STATEMENT AS OF SEPTEMBER 30, 2024 OF THE Priority Health

SCHEDULE D - PART 4

Show All Long-Term Bonds and Stock Sold, Redeemed or Otherwise Disposed of During the Current Quarter

1	2	3	4	5	6	7	8	9	10	Change In Book/Adjusted Carrying Value					16	17	18	19	20	21	22
										11	12	13	14	15							
CUSIP Identification	Description	Foreign	Disposal Date	Name of Purchaser	Number of Shares of Stock	Consideration	Par Value	Actual Cost	Prior Year Book/ Adjusted Carrying Value	Unrealized Valuation Increase/ (Decrease)	Current Year's (Amortization)/ Accretion	Current Year's Other Than Temporary Impairment Recognized	Total Change in Book/ Adjusted Carrying Value (11 + 12 - 13)	Total Foreign Exchange Change in Book /Adjusted Carrying Value	Book/ Adjusted Carrying Value at Disposal Date	Foreign Exchange Gain (Loss) on Disposal	Realized Gain (Loss) on Disposal	Total Gain (Loss) on Disposal	Bond Interest/ Stock Dividends Received During Year	Stated Contractual Maturity Date	NAIC Designation, NAIC Designation Modifier and SVO Administrative Symbol
..3140HF-F7-9	FNMA #BK1989		09/01/2024	MBS PMT		8,631	8,631	8,783	8,636	0	(6)	0	(6)	0	8,631	0	0	0	201	04/01/2048	1.A
..3140J5-ED-7	FNMA #BM1031		09/01/2024	MBS PMT		11,099	11,099	12,101	11,176	0	(77)	0	(77)	0	11,099	0	0	0	223	09/01/2043	1.A
..3140J6-GP-6	FNMA #BM2005		09/01/2024	MBS PMT		2,947	2,947	3,086	2,956	0	(9)	0	(9)	0	2,947	0	0	0	79	12/01/2047	1.A
..3140J6-GR-2	FNMA #BM2007		09/01/2024	MBS PMT		4,649	4,649	4,998	4,671	0	(22)	0	(22)	0	4,649	0	0	0	125	09/01/2048	1.A
..3140J7-UL-7	FNMA #BM3286		09/01/2024	MBS PMT		3,916	3,916	4,085	3,927	0	(11)	0	(11)	0	3,916	0	0	0	117	11/01/2047	1.A
..3140J8-MH-0	FNMA #BM3972		09/01/2024	MBS PMT		4,163	4,163	4,040	4,153	0	10	0	10	0	4,163	0	0	0	69	04/01/2038	1.A
..3140J8-UG-6	FNMA #BM4182		09/01/2024	MBS PMT		2,051	2,051	2,100	2,054	0	(2)	0	(2)	0	2,051	0	0	0	58	07/01/2048	1.A
..3140J9-O3-8	FNMA #BM4973		09/01/2024	MBS PMT		21,887	21,887	22,335	21,920	0	(33)	0	(33)	0	21,887	0	0	0	503	05/01/2043	1.A
..3140JA-ND-6	FNMA #BM5787		09/01/2024	MBS PMT		3,089	3,089	3,199	3,095	0	(6)	0	(6)	0	3,089	0	0	0	83	08/01/2047	1.A
..3140JB-2X-3	FNMA #BM7089		09/01/2024	MBS PMT		10,761	10,761	9,315	10,673	0	88	0	88	0	10,761	0	0	0	213	02/01/2052	1.A
..3140JB-PS-9	FNMA #BM6732		09/01/2024	MBS PMT		30,659	30,659	27,540	30,432	0	227	0	227	0	30,659	0	0	0	811	11/01/2048	1.A
..3140KE-J8-2	FNMA #BP6586		09/01/2024	MBS PMT		6,239	6,239	5,662	0	0	0	0	0	6,239	0	0	0	10	08/01/2035	1.A	
..3140KP-D3-4	FNMA #BQ3721		09/01/2024	MBS PMT		9,084	9,084	7,633	9,030	0	53	0	53	0	9,084	0	0	0	116	09/01/2050	1.A
..3140KV-QD-5	FNMA #BQ9451		09/01/2024	MBS PMT		17,806	17,806	17,422	17,789	0	17	0	17	0	17,806	0	0	0	224	03/01/2051	1.A
..3140OD-S8-9	FNMA #CA6256		09/01/2024	MBS PMT		13,575	13,575	12,553	13,520	0	56	0	56	0	13,575	0	0	0	230	07/01/2050	1.A
..3140OF-3U-1	FNMA #CA8010		09/01/2024	MBS PMT		21,976	21,976	22,199	21,986	0	(11)	0	(11)	0	21,976	0	0	0	230	12/01/2050	1.A
..3140OF-A9-0	FNMA #CA7231		09/01/2024	MBS PMT		20,365	20,365	21,526	20,420	0	(55)	0	(55)	0	20,365	0	0	0	331	10/01/2050	1.A
..3140OG-2A-4	FNMA #CA8868		09/01/2024	MBS PMT		1,743	1,743	1,489	1,728	0	15	0	15	0	1,743	0	0	0	35	02/01/2051	1.A
..3140OG-EC-7	FNMA #CA8230		09/01/2024	MBS PMT		11,798	11,798	12,559	11,844	0	(46)	0	(46)	0	11,798	0	0	0	200	12/01/2050	1.A
..3140OK-KC-1	FNMA #CB0290		09/01/2024	MBS PMT		12,729	12,729	9,374	12,588	0	141	0	141	0	12,729	0	0	0	172	04/01/2051	1.A
..3140OL-GL-4	FNMA #CB1102		09/01/2024	MBS PMT		17,748	17,748	18,245	17,773	0	(25)	0	(25)	0	17,748	0	0	0	239	07/01/2051	1.A
..3140OM-AG-9	FNMA #CB1806		09/01/2024	MBS PMT		18,712	18,712	19,522	18,753	0	(41)	0	(41)	0	18,712	0	0	0	312	10/01/2051	1.A
..3140OM-Q8-0	FNMA #CB2278		09/01/2024	MBS PMT		22,722	22,722	22,945	22,732	0	(10)	0	(10)	0	22,722	0	0	0	306	12/01/2051	1.A
..3140ON-QV-7	FNMA #CB3167		09/01/2024	MBS PMT		13,756	13,756	12,905	13,706	0	50	0	50	0	13,756	0	0	0	275	03/01/2052	1.A
..3140OP-A8-0	FNMA #CB3630		09/01/2024	MBS PMT		26,464	26,464	26,212	26,450	0	14	0	14	0	26,464	0	0	0	743	05/01/2052	1.A
..3140X4-SY-8	FNMA #FM1762		09/01/2024	MBS PMT		6,626	6,626	6,820	6,637	0	(11)	0	(11)	0	6,626	0	0	0	161	09/01/2049	1.A
..3140X4-KL-9	FNMA #FM1198		09/01/2024	MBS PMT		11,512	11,512	11,638	11,519	0	(8)	0	(8)	0	11,512	0	0	0	230	07/01/2049	1.A
..3140X4-MD-5	FNMA #FM1255		09/01/2024	MBS PMT		5,402	5,402	5,643	5,415	0	(14)	0	(14)	0	5,402	0	0	0	110	01/01/2048	1.A
..3140X6-JS-1	FNMA #FM2972		09/01/2024	MBS PMT		14,032	14,032	14,285	14,052	0	(19)	0	(19)	0	14,032	0	0	0	375	12/01/2044	1.A
..3140X6-KR-1	FNMA #FM3003		09/01/2024	MBS PMT		13,323	13,323	12,317	13,247	0	75	0	75	0	13,323	0	0	0	357	05/01/2049	1.A
..3140X6-P3-9	FNMA #FM3141		09/01/2024	MBS PMT		12,613	12,613	11,508	12,518	0	95	0	95	0	12,613	0	0	0	309	11/01/2048	1.A
..3140X7-JT-7	FNMA #FM3873		09/01/2024	MBS PMT		23,538	23,538	24,840	23,671	0	(132)	0	(132)	0	23,538	0	0	0	373	08/01/2035	1.A
..3140X7-VV-8	FNMA #FM4227		09/01/2024	MBS PMT		5,046	5,046	5,325	5,059	0	(13)	0	(13)	0	5,046	0	0	0	84	09/01/2050	1.A
..3140X8-7K-7	FNMA #FM5397		09/01/2024	MBS PMT		10,975	10,975	11,093	10,982	0	(7)	0	(7)	0	10,975	0	0	0	220	12/01/2050	1.A
..3140X8-SF-5	FNMA #FM5017		09/01/2024	MBS PMT		12,626	12,626	13,078	12,646	0	(20)	0	(20)	0	12,626	0	0	0	208	12/01/2050	1.A
..3140X8-TA-5	FNMA #FM5044		09/01/2024	MBS PMT		34,066	34,066	35,391	34,133	0	(67)	0	(67)	0	34,066	0	0	0	459	12/01/2050	1.A
..3140X9-GM-1	FNMA #FM5603		09/01/2024	MBS PMT		10,412	10,412	10,302	10,405	0	7	0	7	0	10,412	0	0	0	208	09/01/2048	1.A
..3140XB-FW-5	FNMA #FM7380		09/01/2024	MBS PMT		17,357	17,357	18,225	17,407	0	(50)	0	(50)	0	17,357	0	0	0	284	06/01/2051	1.A
..3140XB-LE-8	FNMA #FM7524		09/01/2024	MBS PMT		11,410	11,410	12,049	11,440	0	(29)	0	(29)	0	11,410	0	0	0	183	06/01/2051	1.A
..3140XC-2B-3	FNMA #FM8869		09/01/2024	MBS PMT		10,736	10,736	9,395	10,619	0	117	0	117	0	10,736	0	0	0	147	09/01/2036	1.A
..3140XC-GB-8	FNMA #FM8293		09/01/2024	MBS PMT		39,954	39,954	42,070	40,076	0	(122)	0	(122)	0	39,954	0	0	0	623	07/01/2051	1.A
..3140XD-GN-1	FNMA #FM9876		09/01/2024	MBS PMT		11,812	11,812	10,465	11,733	0	80	0	80	0	11,812	0	0	0	196	12/01/2051	1.A
..3140XD-HV-1	FNMA #FM9243		09/01/2024	MBS PMT		17,641	17,641	18,033	17,657	0	(15)	0	(15)	0	17,641	0	0	0	342	10/01/2051	1.A
..3140XD-R2-4	FNMA #FM9504		09/01/2024	MBS PMT		22,146	22,146	22,817	22,186	0	(40)	0	(40)	0	22,146	0	0	0	373	11/01/2051	1.A
..3140XD-RC-2	FNMA #FM9482		09/01/2024	MBS PMT		70,739	70,739	56,878	70,175	0	564	0	564	0	70,739	0	0	0	1,420	11/01/2051	1.A
..3140XD-I9-3	FNMA #FM9671		09/01/2024	MBS PMT		11,746	11,746	11,498	11,734	0	12	0	12	0	11,746	0	0	0	155	12/01/2051	1.A

STATEMENT AS OF SEPTEMBER 30, 2024 OF THE Priority Health

SCHEDULE D - PART 4

Show All Long-Term Bonds and Stock Sold, Redeemed or Otherwise Disposed of During the Current Quarter

1	2	3	4	5	6	7	8	9	10	Change In Book/Adjusted Carrying Value					16	17	18	19	20	21	22
										11	12	13	14	15							
CUSIP Identification	Description	Foreign	Disposal Date	Name of Purchaser	Number of Shares of Stock	Consideration	Par Value	Actual Cost	Prior Year Book/Adjusted Carrying Value	Unrealized Valuation Increase/(Decrease)	Current Year's (Amortization)/Accretion	Current Year's Other Than Temporary Impairment Recognized	Total Change in Book/Adjusted Carrying Value (11 + 12 - 13)	Total Foreign Exchange Change in Book /Adjusted Carrying Value	Book/Adjusted Carrying Value at Disposal Date	Foreign Exchange Gain (Loss) on Disposal	Realized Gain (Loss) on Disposal	Total Gain (Loss) on Disposal	Bond Interest/Stock Dividends Received During Year	Stated Contractual Maturity Date	NAIC Designation, NAIC Designation Modifier and SVO Administrative Symbol
..3140XD-V6-7	FNMA #FM9732		09/01/2024	VARIOUS		579,158	668,182	688,019	687,045	0	(1,321)	0	(1,321)	0	685,723	0	(106,566)	(106,566)	11,766	12/01/2051	1.A
..3140XF-A5-0	FNMA #FS0027		09/01/2024	MBS PMT		10,573	10,573	9,701	10,520	0	53	0	53	0	10,573	0	0	0	170	11/01/2051	1.A
..3140XF-ZD-6	FNMA #FS0739		09/01/2024	MBS PMT		21,479	21,479	21,620	21,491	0	(12)	0	(12)	0	21,479	0	0	0	484	02/01/2052	1.A
..3140XG-ZJ-1	FNMA #FS1644		09/01/2024	MBS PMT		9,131	9,131	8,688	9,104	0	26	0	26	0	9,131	0	0	0	182	04/01/2042	1.A
..3140XH-FQ-5	FNMA #FS1974		09/01/2024	MBS PMT		17,995	17,995	15,930	17,782	0	213	0	213	0	17,995	0	0	0	181	02/01/2036	1.A
..3140XH-YT-9	FNMA #FS2489		09/01/2024	MBS PMT		11,139	11,139	11,445	11,158	0	(20)	0	(20)	0	11,139	0	0	0	370	08/01/2052	1.A
..3140XJ-PW-7	FNMA #FS3136		09/01/2024	MBS PMT		14,251	14,251	12,661	14,120	0	130	0	130	0	14,251	0	0	0	334	08/01/2048	1.A
..3140XK-GH-8	FNMA #FS4471		09/01/2024	MBS PMT		8,893	8,893	7,902	8,815	0	78	0	78	0	8,893	0	0	0	147	09/01/2042	1.A
..3140XL-E4-6	FNMA #FS4654		09/01/2024	MBS PMT		16,996	16,996	12,726	16,721	0	276	0	276	0	16,996	0	0	0	227	07/01/2051	1.A
..3140XL-G2-8	FNMA #FS4716		09/01/2024	MBS PMT		39,412	39,412	30,569	0	0	94	0	94	0	39,412	0	0	0	127	01/01/2052	1.A
..3140XL-WZ-7	FNMA #FS5163		09/01/2024	MBS PMT		13,599	13,599	12,675	13,525	0	75	0	75	0	13,599	0	0	0	417	04/01/2053	1.A
..3140XM-NE-2	FNMA #FS5788		09/01/2024	MBS PMT		7,615	7,615	7,762	7,635	0	(20)	0	(20)	0	7,615	0	0	0	341	09/01/2053	1.A
..3140XN-Z3-1	FNMA #FS7061		09/01/2024	MBS PMT		32,098	32,098	27,693	0	0	215	0	215	0	32,098	0	0	0	487	04/01/2052	1.A
..31410L-DU-3	FNMA #890315		09/01/2024	MBS PMT		1,408	1,408	1,506	1,414	0	(7)	0	(7)	0	1,408	0	0	0	43	02/01/2041	1.A
..31411E-ZB-6	FNMA #906238		09/01/2024	MBS PMT		114	114	110	113	0	0	0	0	0	114	0	0	0	4	01/01/2037	1.A
..31412R-H5-9	FNMA #932752		09/01/2024	MBS PMT		2,411	2,411	2,572	2,421	0	(10)	0	(10)	0	2,411	0	0	0	82	04/01/2040	1.A
..31413D-S4-0	FNMA #942539		09/01/2024	MBS PMT		26	26	25	26	0	0	0	0	0	26	0	0	0	1	08/01/2037	1.A
..31413S-CV-4	FNMA #953784		09/01/2024	MBS PMT		191	191	192	191	0	0	0	0	0	191	0	0	0	8	11/01/2037	1.A
..31413S-HB-3	FNMA #953926		09/01/2024	MBS PMT		198	198	200	198	0	0	0	0	0	198	0	0	0	7	12/01/2037	1.A
..31416X-J9-2	FNMA #AB2087		09/01/2024	MBS PMT		1,674	1,674	1,686	1,675	0	(1)	0	(1)	0	1,674	0	0	0	47	01/01/2041	1.A
..31417B-2S-5	FNMA #AB5284		09/01/2024	MBS PMT		2,148	2,148	2,288	2,162	0	(14)	0	(14)	0	2,148	0	0	0	50	06/01/2042	1.A
..31417F-R8-3	FNMA #AB8610		09/01/2024	MBS PMT		10,710	10,710	10,700	10,710	0	1	0	1	0	10,710	0	0	0	216	03/01/2043	1.A
..31417G-F3-5	FNMA #AB9185		09/01/2024	MBS PMT		2,814	2,814	2,840	2,815	0	(1)	0	(1)	0	2,814	0	0	0	56	04/01/2043	1.A
..31417Y-SC-2	FNMA #MA0514		09/01/2024	MBS PMT		664	664	687	665	0	(1)	0	(1)	0	664	0	0	0	18	09/01/2040	1.A
..31418A-GR-3	FNMA #MA1107		09/01/2024	MBS PMT		8,214	8,214	8,411	8,238	0	(24)	0	(24)	0	8,214	0	0	0	191	07/01/2032	1.A
..31418A-JV-1	FNMA #MA1175		09/01/2024	MBS PMT		3,105	3,105	3,223	3,113	0	(8)	0	(8)	0	3,105	0	0	0	64	09/01/2042	1.A
..31418A-SU-3	FNMA #MA1430		09/01/2024	MBS PMT		5,299	5,299	5,354	5,303	0	(4)	0	(4)	0	5,299	0	0	0	104	05/01/2043	1.A
..31418A-TA-6	FNMA #MA1444		09/01/2024	MBS PMT		3,383	3,383	3,470	3,390	0	(7)	0	(7)	0	3,383	0	0	0	58	05/01/2033	1.A
..31418A-TY-4	FNMA #MA1466		09/01/2024	MBS PMT		2,033	2,033	2,041	2,034	0	0	0	0	0	2,033	0	0	0	48	06/01/2043	1.A
..31418C-SU-4	FNMA #MA3558		09/01/2024	MBS PMT		5,331	5,331	5,366	5,335	0	(4)	0	(4)	0	5,331	0	0	0	109	01/01/2034	1.A
..31418C-DJ-0	FNMA #MA2804		09/01/2024	MBS PMT		5,285	5,285	5,498	5,304	0	(19)	0	(19)	0	5,285	0	0	0	106	11/01/2036	1.A
..31418C-DL-5	FNMA #MA2806		09/01/2024	MBS PMT		5,054	5,054	5,207	5,062	0	(8)	0	(8)	0	5,054	0	0	0	101	11/01/2046	1.A
..31418C-FN-9	FNMA #MA2872		09/01/2024	MBS PMT		550	550	592	553	0	(4)	0	(4)	0	550	0	0	0	17	01/01/2047	1.A
..31418C-GB-3	FNMA #MA3149		09/01/2024	MBS PMT		4,021	4,021	4,215	4,031	0	(10)	0	(10)	0	4,021	0	0	0	106	10/01/2047	1.A
..31418C-RA-4	FNMA #MA3180		09/01/2024	MBS PMT		7,414	7,414	7,743	7,449	0	(35)	0	(35)	0	7,414	0	0	0	176	11/01/2032	1.A
..31418C-RD-8	FNMA #MA3183		09/01/2024	MBS PMT		6,152	6,152	6,333	6,162	0	(10)	0	(10)	0	6,152	0	0	0	163	11/01/2047	1.A
..31418C-U7-7	FNMA #MA3305		09/01/2024	MBS PMT		6,130	6,130	6,503	6,152	0	(21)	0	(21)	0	6,130	0	0	0	142	03/01/2048	1.A
..31418C-UF-9	FNMA #MA3281		09/01/2024	MBS PMT		4,547	4,547	4,798	4,568	0	(21)	0	(21)	0	4,547	0	0	0	120	02/01/2038	1.A
..31418C-V3-5	FNMA #MA3333		09/01/2024	MBS PMT		4,902	4,902	5,134	4,915	0	(13)	0	(13)	0	4,902	0	0	0	131	04/01/2048	1.A
..31418C-XP-4	FNMA #MA3385		09/01/2024	MBS PMT		14,379	14,379	14,763	14,407	0	(28)	0	(28)	0	14,379	0	0	0	431	06/01/2048	1.A
..31418D-3X-8	FNMA #MA4413		09/01/2024	MBS PMT		14,011	14,011	14,234	14,020	0	(9)	0	(9)	0	14,011	0	0	0	187	09/01/2051	1.A
..31418D-AS-1	FNMA #MA3616		09/01/2024	MBS PMT		2,203	2,203	2,300	2,209	0	(6)	0	(6)	0	2,203	0	0	0	65	03/01/2049	1.A
..31418D-C6-7	FNMA #MA3692		09/01/2024	MBS PMT		2,573	2,573	2,658	2,577	0	(5)	0	(5)	0	2,573	0	0	0	60	07/01/2049	1.A
..31418D-CW-0	FNMA #MA3684		09/01/2024	MBS PMT		9,751	9,751	10,115	9,782	0	(31)	0	(31)	0	9,751	0	0	0	280	06/01/2039	1.A
..31418D-ML-3	FNMA #MA3962		09/01/2024	MBS PMT		13,641	13,641	14,487	13,690	0	(49)	0	(49)	0	13,641	0	0	0	358	03/01/2050	1.A
..31418D-P5-5	FNMA #MA4043		09/01/2024	MBS PMT		9,100	9,100	9,604	9,151	0	(51)	0	(51)	0	9,100	0	0	0	181	06/01/2035	1.A

STATEMENT AS OF SEPTEMBER 30, 2024 OF THE Priority Health

SCHEDULE D - PART 4

Show All Long-Term Bonds and Stock Sold, Redeemed or Otherwise Disposed of During the Current Quarter

1	2	3	4	5	6	7	8	9	10	Change In Book/Adjusted Carrying Value					16	17	18	19	20	21	22
										11	12	13	14	15							
CUSIP Identification	Description	Foreign	Disposal Date	Name of Purchaser	Number of Shares of Stock	Consideration	Par Value	Actual Cost	Prior Year Book/Adjusted Carrying Value	Unrealized Valuation Increase/(Decrease)	Current Year's (Amortization)/Accretion	Current Year's Other Than Temporary Impairment Recognized	Total Change in Book/Adjusted Carrying Value (11 + 12 - 13)	Total Foreign Exchange Change in Book /Adjusted Carrying Value	Book/Adjusted Carrying Value at Disposal Date	Foreign Exchange Gain (Loss) on Disposal	Realized Gain (Loss) on Disposal	Total Gain (Loss) on Disposal	Bond Interest/Stock Dividends Received During Year	Stated Contractual Maturity Date	NAIC Designation, NAIC Designation Modifier and SVO Administrative Symbol
..31418D-P9-7	FNMA #MA4047		09/01/2024	MBS PMT		13,919	13,919	10,885	0	0	44	0	44	0	13,919	0	0	0	70	06/01/2050	1.A
..31418D-Q7-0	FNMA #MA4077		09/01/2024	MBS PMT		21,623	21,623	22,241	21,649	0	(26)	0	(26)	0	21,623	0	0	0	289	07/01/2050	1.A
..31418D-PP-9	FNMA #MA4093		09/01/2024	MBS PMT		4,825	4,825	4,220	0	0	0	0	0	0	4,825	0	0	0	8	08/01/2040	1.A
..31418D-TQ-5	FNMA #MA4158		09/01/2024	MBS PMT		18,856	18,856	15,680	18,707	0	149	0	149	0	18,856	0	0	0	251	10/01/2050	1.A
..31418D-V8-2	FNMA #MA4238		09/01/2024	MBS PMT		25,891	25,891	27,165	25,949	0	(59)	0	(59)	0	25,891	0	0	0	432	01/01/2051	1.A
..31418D-VC-3	FNMA #MA4210		09/01/2024	MBS PMT		12,350	12,350	12,952	12,379	0	(29)	0	(29)	0	12,350	0	0	0	206	12/01/2050	1.A
..31418D-WR-9	FNMA #MA4255		09/01/2024	MBS PMT		13,081	13,081	13,549	13,101	0	(20)	0	(20)	0	13,081	0	0	0	174	02/01/2051	1.A
..31418D-YB-2	FNMA #MA4305		09/01/2024	MBS PMT		13,485	13,485	13,439	13,483	0	2	0	2	0	13,485	0	0	0	180	04/01/2051	1.A
..31418E-6Y-1	FNMA #MA5386		09/01/2024	MBS PMT		26,465	26,465	24,778	0	0	23	0	23	0	26,465	0	0	0	173	06/01/2054	1.A
..31418E-AN-0	FNMA #MA4512		09/01/2024	MBS PMT		86,551	86,551	89,148	86,689	0	(137)	0	(137)	0	86,551	0	0	0	1,446	01/01/2052	1.A
..31418E-BK-5	FNMA #MA4541		09/01/2024	MBS PMT		39,310	39,310	36,043	39,078	0	232	0	232	0	39,310	0	0	0	647	02/01/2042	1.A
..31418E-CG-3	FNMA #MA4570		09/01/2024	MBS PMT		14,099	14,099	11,563	13,914	0	185	0	185	0	14,099	0	0	0	187	03/01/2042	1.A
..31418E-ES-5	FNMA #MA4644		09/01/2024	MBS PMT		86,957	86,957	86,794	86,948	0	8	0	8	0	86,957	0	0	0	2,337	05/01/2052	1.A
..31418E-KS-8	FNMA #AD4804		09/01/2024	MBS PMT		80,031	80,031	73,485	79,721	0	310	0	310	0	80,031	0	0	0	2,113	11/01/2052	1.A
..31418N-ZW-3	FNMA #AD1656		09/01/2024	MBS PMT		1,610	1,610	1,678	1,616	0	(5)	0	(5)	0	1,610	0	0	0	48	03/01/2040	1.A
..31418R-AS-4	FNMA #AD3808		09/01/2024	MBS PMT		601	601	614	602	0	(1)	0	(1)	0	601	0	0	0	18	04/01/2041	1.A
..31418U-CG-7	FNMA #AD6370		09/01/2024	MBS PMT		956	956	964	956	0	(1)	0	(1)	0	956	0	0	0	28	05/01/2040	1.A
..31418W-PG-9	FNMA #AD6522		09/01/2024	MBS PMT		387	387	391	387	0	0	0	0	0	387	0	0	0	10	08/01/2040	1.A
..31419A-4N-4	FNMA #AE0828		09/01/2024	MBS PMT		1,273	1,273	1,321	1,276	0	(3)	0	(3)	0	1,273	0	0	0	30	02/01/2041	1.A
..31419A-NM-5	FNMA #AE0395		09/01/2024	MBS PMT		5,219	5,219	5,516	5,242	0	(23)	0	(23)	0	5,219	0	0	0	157	10/01/2040	1.A
..35563P-ML-0	FHLMC SCRT 2019-4 MA		09/01/2024	MBS PMT		5,073	5,073	5,185	5,083	0	(10)	0	(10)	0	5,073	0	0	0	99	02/25/2059	1.A
..35563P-QN-2	FHLMC SCRT 2020-2 MT		09/01/2024	MBS PMT		7,379	7,379	7,602	7,393	0	(13)	0	(13)	0	7,379	0	0	0	98	11/25/2059	1.A
..36179U-O6-2	GNMA #MA5877		09/01/2024	MBS PMT		37,094	37,094	35,482	0	0	33	0	33	0	37,094	0	0	0	391	04/20/2049	1.A
..59259Y-BF-5	METROPOLITAN TRANSN AUTH NY		08/08/2024	NORTHERN TRUST		536,806	520,000	628,103	595,672	0	(3,314)	0	(3,314)	0	592,359	0	(55,552)	(55,552)	22,388	11/15/2039	1.G FE
0909999999. Subtotal - Bonds - U.S. Special Revenues						4,900,371	4,994,835	5,156,449	4,802,966	0	(7,631)	0	(7,631)	0	5,135,194	0	(234,823)	(234,823)	110,371	XXX	XXX
..02377B-AB-2	AMERICAN AIRLINES 15-2 AA PTT		09/22/2024	SINK		11,849	11,849	12,136	11,880	0	(31)	0	(31)	0	11,849	0	0	0	427	03/22/2029	1.F FE
..02378A-AA-5	AMERICAN AIRLINES 17-1 A PT		08/15/2024	SINK		14,250	14,250	14,401	14,263	0	(13)	0	(13)	0	14,250	0	0	0	570	08/15/2030	2.B FE
..03464L-AA-4	ACMT 2020-4 A1		09/01/2024	MBS PMT		14,308	14,308	14,410	14,410	0	16	0	16	0	14,308	0	0	0	142	06/25/2065	1.A
..07177M-AB-9	BAXALTA INC		08/08/2024	MAR		147,571	149,000	153,095	149,657	0	(319)	0	(319)	0	149,338	0	(1,767)	(1,767)	3,742	06/23/2025	2.A FE
..10112R-AZ-7	BOSTON PPTY LP		08/08/2024	MAR		493,745	500,000	498,785	499,808	0	111	0	111	0	499,919	0	(6,174)	(6,174)	17,067	01/15/2025	2.B FE
..11043X-AA-1	BRITISH AIR 19-1 AA PT		09/15/2024	SINK		2,902	2,902	2,935	2,904	0	(2)	0	(2)	0	2,902	0	0	0	72	06/15/2034	1.D FE
..12591Q-AR-3	COMM 2014-UBS4 A5		09/01/2024	MBS PMT		631,217	631,217	654,690	633,065	0	(1,848)	0	(1,848)	0	631,217	0	0	0	13,798	08/10/2047	1.A
..126650-BP-4	CVS PASS-THRU TRST		09/10/2024	SINK		15,831	15,831	16,194	15,859	0	(28)	0	(28)	0	15,831	0	0	0	638	12/10/2028	2.B FE
..12665U-AA-2	CVS PASS-THRU TRST		09/10/2024	SINK		2,661	2,661	2,661	2,661	0	0	0	0	0	2,661	0	0	0	83	01/10/2036	2.B FE
..161175-AY-0	CHARTER COMM OPT LLC/CAP		05/24/2024	CANCEL/CORRECT		439,321	442,000	337,705	0	0	0	0	0	337,704	0	101,617	101,617	7,291	07/23/2025	2.C FE	
..16159L-AC-2	CHASE 2023-RPL1 A1		09/01/2024	MBS PMT		11,232	11,232	10,163	11,137	0	96	0	96	0	11,232	0	0	0	262	06/25/2062	1.A
..16159M-AA-4	CHASE 2024-RPL1 A1A		09/01/2024	MBS PMT		8,546	8,546	7,311	8,546	0	59	0	59	0	8,546	0	0	0	145	03/25/2064	1.A FE
..16159R-AC-9	CHASE 2023-RPL2		09/01/2024	MBS PMT		10,338	10,338	8,834	10,267	0	70	0	70	0	10,338	0	0	0	226	03/25/2063	1.A FE
..161930-AB-8	CHASE 2024-RPL2 A1A		09/01/2024	MBS PMT		24,536	24,536	21,178	0	0	62	0	62	0	24,536	0	0	0	195	08/25/2064	1.A FE
..17181K-AA-8	CIM 2023-R2 A1		09/01/2024	MBS PMT		15,353	15,353	15,119	15,327	0	26	0	26	0	15,353	0	0	0	563	08/25/2064	1.A
..17322Y-AD-2	CGCMT 2014-GC25 A4		09/01/2024	MBS PMT		301,598	301,598	310,516	302,586	0	(988)	0	(988)	0	301,598	0	0	0	6,903	10/10/2047	1.A
..17323C-AE-7	CGCMT 2015-GC27 A5		09/01/2024	MBS PMT		78,658	78,658	78,815	78,658	0	0	0	0	0	78,658	0	0	0	1,851	02/10/2048	1.A
..24381W-AA-6	DRMT 2021-2 A1		09/01/2024	MBS PMT		20,196	20,196	20,195	20,196	0	0	0	0	0	20,196	0	0	0	124	04/25/2066	1.A FE
..31574P-AA-3	EFMT 2020-1 A1		09/01/2024	MBS PMT		12,798	12,798	13,030	12,808	0	(10)	0	(10)	0	12,798	0	0	0	173	05/25/2065	1.A
..33767W-AA-1	FKH 2021-SFR1 A		09/01/2024	VARIOUS		96,597	103,678	103,635	103,678	0	0	0	0	0	103,678	0	(7,081)	(7,081)	987	08/17/2038	1.A FE
..33768E-AA-0	FKH 2022-SFR3 A		07/01/2024	MBS PMT		1,015	1,015	952	1,001	0	14	0	14	0	1,015	0	0	0	25	07/17/2038	1.A FE

E05.7

STATEMENT AS OF SEPTEMBER 30, 2024 OF THE Priority Health

SCHEDULE D - PART 4

Show All Long-Term Bonds and Stock Sold, Redeemed or Otherwise Disposed of During the Current Quarter

1	2	3	4	5	6	7	8	9	10	Change In Book/Adjusted Carrying Value					16	17	18	19	20	21	22
										11	12	13	14	15							
CUSIP Identification	Description	Foreign	Disposal Date	Name of Purchaser	Number of Shares of Stock	Consideration	Par Value	Actual Cost	Prior Year Book/ Adjusted Carrying Value	Unrealized Valuation Increase/ (Decrease)	Current Year's (Amortization)/ Accretion	Current Year's Other Than Temporary Impairment Recognized	Total Change in Book/ Adjusted Carrying Value (11 + 12 - 13)	Total Foreign Exchange Change in Book /Adjusted Carrying Value	Book/ Adjusted Carrying Value at Disposal Date	Foreign Exchange Gain (Loss) on Disposal	Realized Gain (Loss) on Disposal	Total Gain (Loss) on Disposal	Bond Interest/ Stock Dividends Received During Year	Stated Contractual Maturity Date	NAIC Designation, NAIC Designation Modifier and SVO Administrative Symbol
..38148L-AE-6	GOLDMAN SACHS GRP INC		08/08/2024	LOP		989,680	1,000,000	996,120	999,369	0	271	0	271	0	999,640	0	(9,960)	(9,960)	26,771	05/22/2025	2.A FE
..40443R-AA-9	HPLY 2019-HIT A		09/15/2024	MBS PMT		174,194	174,194	174,194	174,194	0	0	0	0	0	174,194	0	0	0	7,129	11/15/2036	1.A
..41284N-AC-4	HDMOT 2021-A A3		07/15/2024	MBS PMT		19,627	19,627	19,605	19,628	0	(1)	0	(1)	0	19,627	0	0	0	42	04/15/2026	1.A FE
..43730X-AA-2	HPA 2021-3 A		09/01/2024	MBS PMT		9,002	9,002	8,908	8,993	0	9	0	9	0	9,002	0	0	0	134	01/17/2041	1.A FE
..46643G-AD-2	JPMBB 2014-C24 A4A1		09/01/2024	MBS PMT		587,042	587,042	598,760	587,949	0	(907)	0	(907)	0	587,042	0	0	0	12,461	11/15/2047	1.A
..46643P-BE-9	JPMBB 2014-C25 A5		09/01/2024	MBS PMT		110,217	110,217	113,571	110,576	0	(359)	0	(359)	0	110,217	0	0	0	3,035	11/15/2047	1.A
..46656N-AA-7	JPMMT 2023-DSC1 A1		09/01/2024	MBS PMT		7,374	7,374	6,827	7,333	0	41	0	41	0	7,374	0	0	0	222	07/25/2063	1.A FE
..49327M-3E-2	KEY BK NA		08/08/2024	BSF		939,455	950,000	877,886	894,194	0	20,219	0	20,219	0	914,413	0	25,042	25,042	39,535	08/08/2025	2.A FE
..50202K-AA-4	LCCM 2021-FL2		09/16/2024	MBS PMT		260,626	260,626	260,626	260,626	0	0	0	0	0	260,626	0	0	0	11,530	12/13/2038	1.A FE
..552751-AA-7	MFRA 2020-NQM2		09/01/2024	MBS PMT		22,226	22,226	22,226	22,226	0	0	0	0	0	22,226	0	0	0	208	04/25/2065	1.A FE
..58003U-AA-6	MF1 2020-FL4 A		09/15/2024	MBS PMT		67,540	67,540	67,540	67,540	0	0	0	0	0	67,540	0	0	0	3,466	11/15/2035	1.A FE
..58768P-AC-8	MBART 2022-1 A3		09/15/2024	MBS PMT		112,821	112,821	112,799	112,601	0	220	0	220	0	112,821	0	0	0	4,066	08/16/2027	1.A FE
..59166E-AB-1	MST 2019-1A A1A		09/01/2024	MBS PMT		14,841	14,841	15,308	14,894	0	(53)	0	(53)	0	14,841	0	0	0	379	04/25/2058	1.A FE
..59980X-AC-1	MCMLT 2018-3 A1		09/01/2024	MBS PMT		10,221	10,221	10,480	10,254	0	(33)	0	(33)	0	10,221	0	0	0	228	08/25/2058	1.A
..59981B-AC-8	MCMLT 2019GS1		09/01/2024	MBS PMT		4,975	4,975	4,999	4,981	0	(6)	0	(6)	0	4,975	0	0	0	89	07/25/2059	1.A
..59981T-AC-9	MCMLT 2019GS2		09/01/2024	MBS PMT		7,886	7,886	7,936	7,893	0	(7)	0	(7)	0	7,886	0	0	0	148	08/25/2059	1.A
..63743Z-ND-3	NATIONAL RURAL UTILS		08/08/2024	MAR		494,065	500,000	504,130	500,403	0	(299)	0	(299)	0	500,104	0	(6,039)	(6,039)	14,725	01/27/2025	1.E FE
..63935B-AA-1	NAVSL 2020-HA A		09/15/2024	MBS PMT		6,691	6,691	6,690	6,688	0	3	0	3	0	6,691	0	0	0	59	01/15/2069	1.A FE
..63941T-AA-4	NAVSL 2020-EA A		09/15/2024	MBS PMT		23,519	23,519	23,283	23,460	0	58	0	58	0	23,519	0	0	0	265	05/15/2069	1.A FE
..63942K-AA-2	NAVSL 2021-GA A		09/15/2024	MBS PMT		17,649	17,649	17,622	17,635	0	13	0	13	0	17,649	0	0	0	187	04/15/2070	1.A FE
..64034Y-AB-7	NSLT 2021-DA AFX		09/20/2024	MBS PMT		27,090	27,090	27,088	27,070	0	20	0	20	0	27,090	0	0	0	295	04/20/2062	1.A FE
..64828X-AA-1	NRZT 2020-RPL1 A1		09/01/2024	MBS PMT		8,107	8,107	8,238	8,122	0	(15)	0	(15)	0	8,107	0	0	0	149	11/25/2059	1.A
..64830H-AA-2	NRZT 2019-RPL2 A1		09/01/2024	MBS PMT		26,092	26,092	24,347	25,797	0	296	0	296	0	26,092	0	0	0	562	02/25/2059	1.A
..64830T-AD-0	NRZT 2020-1A A1B		09/01/2024	MBS PMT		5,481	5,481	5,637	5,496	0	(14)	0	(14)	0	5,481	0	0	0	128	10/25/2059	1.A
..65339K-BP-4	NEXTERA ENERGY CAP		08/08/2024	MIA		803,352	800,000	802,000	801,193	0	(609)	0	(609)	0	800,584	0	2,768	2,768	45,450	03/01/2025	2.A FE
..67115F-AA-5	OBX 2022-NQMS A1		09/01/2024	MBS PMT		14,738	14,738	14,690	14,736	0	3	0	3	0	14,738	0	0	0	403	05/25/2062	1.A FE
..67116K-AC-9	OBX 2022-NQMS A1		09/01/2024	MBS PMT		22,050	22,050	21,808	22,037	0	14	0	14	0	22,050	0	0	0	477	01/25/2062	1.A FE
..67448M-AA-8	OBX 2024-HYB1 A1		09/01/2024	MBS PMT		22,854	22,854	21,899	0	0	105	0	105	0	22,854	0	0	0	463	03/25/2053	1.A FE
..68389X-BT-1	ORACLE CORP		08/08/2024	MAR		490,700	500,000	499,815	499,952	0	23	0	23	0	499,975	0	(9,275)	(9,275)	10,694	04/01/2025	2.B FE
..74333T-AA-7	PROG 2021-SFR8 A		08/01/2024	MBS PMT		1,375	1,375	1,375	1,375	0	0	0	0	0	1,375	0	0	0	13	10/17/2038	1.A FE
..78433X-AA-8	SALT 2021-1A AA		09/15/2024	MBS PMT		20,278	20,278	20,278	20,284	0	15	0	15	0	20,278	0	0	0	295	02/28/2033	1.C FE
..78443C-CL-6	SLMA 2006-A A5		09/15/2024	MBS PMT		23,396	23,396	22,950	23,284	0	111	0	111	0	23,396	0	0	0	1,059	06/15/2039	1.A FE
..78443D-AD-4	SLMA 2007-A A4A		09/15/2024	MBS PMT		11,186	11,186	11,030	11,136	0	50	0	50	0	11,186	0	0	0	502	12/16/2041	1.A FE
..78449C-AA-6	SMB 2022-C A1A		09/15/2024	MBS PMT		11,729	11,729	11,729	11,729	0	18	0	18	0	11,729	0	0	0	349	05/16/2050	1.A FE
..785592-AV-8	SABINE PASS LIQUEFACTION		09/27/2024	NORTHERN TRUST		559,620	550,000	613,184	570,582	0	(7,527)	0	(7,527)	0	563,055	0	(3,435)	(3,435)	40,391	06/30/2026	2.A FE
..83207Q-AA-7	SMB 2024-D A1A		09/15/2024	MBS PMT		13,101	13,101	13,096	0	0	27	0	27	0	13,101	0	0	0	108	07/05/2053	1.A FE
..86358E-PB-6	SAIL 2004-10 A11		09/25/2024	MBS PMT		12,249	12,249	12,268	12,268	0	0	0	0	0	12,268	0	(19)	(19)	363	11/25/2034	1.A FM
..89175T-AA-6	TPMT 2018-4 A1		09/01/2024	MBS PMT		7,024	7,024	6,637	6,993	0	31	0	31	0	7,024	0	0	0	148	06/25/2058	1.A
..89176L-AA-2	TPMT 2018-6 A1A		09/01/2024	MBS PMT		6,090	6,090	6,277	6,141	0	(51)	0	(51)	0	6,090	0	0	0	150	03/25/2058	1.A
..89176U-AN-4	TPMT 2020-2 A1A		09/01/2024	MBS PMT		6,267	6,267	6,374	6,279	0	(12)	0	(12)	0	6,267	0	0	0	69	04/25/2060	1.A
..89177B-AA-3	TPMT 2019 A1		09/01/2024	MBS PMT		18,637	18,637	19,969	18,860	0	(223)	0	(223)	0	18,637	0	0	0	475	03/25/2058	1.A
..89177H-AA-0	TPMT 2019-HY2 A1		09/25/2024	MBS PMT		7,841	7,841	7,912	7,859	0	(19)	0	(19)	0	7,841	0	0	0	320	05/25/2058	1.A
..89177X-AA-5	TPMT 2019-HY3 A1A		09/25/2024	MBS PMT		7,146	7,146	7,161	7,148	0	(2)	0	(2)	0	7,146	0	0	0	318	10/25/2059	1.A
..89178B-AA-2	TPMT 2019-4 A1		09/01/2024	MBS PMT		11,799	11,799	11,953	11,819	0	(19)	0	(19)	0	11,799	0	0	0	228	10/25/2059	1.A
..89178W-AU-2	TPMT 2020-1 A1		09/01/2024	MBS PMT		8,760	8,760	9,127	8,792	0	(32)	0	(32)	0	8,760	0	0	0	156	01/25/2060	1.A
..89180N-AA-2	TPMT 2022-3 A1		09/01/2024	MBS PMT		33,405	33,405	32,048	33,254	0	151	0	151	0	33,405	0	0	0	825	08/01/2062	1.A

STATEMENT AS OF SEPTEMBER 30, 2024 OF THE Priority Health

SCHEDULE D - PART 4

Show All Long-Term Bonds and Stock Sold, Redeemed or Otherwise Disposed of During the Current Quarter

1	2	3	4	5	6	7	8	9	10	Change In Book/Adjusted Carrying Value					16	17	18	19	20	21	22		
										11	12	13	14	15									
CUSIP Identification	Description	Foreign	Disposal Date	Name of Purchaser	Number of Shares of Stock	Consideration	Par Value	Actual Cost	Prior Year Book/Adjusted Carrying Value	Unrealized Valuation Increase/(Decrease)	Current Year's (Amortization)/Accretion	Current Year's Other Than Temporary Impairment Recognized	Total Change in Book/Adjusted Carrying Value (11 + 12 - 13)	Total Foreign Exchange Change in Book /Adjusted Carrying Value	Book/Adjusted Carrying Value at Disposal Date	Foreign Exchange Gain (Loss) on Disposal	Realized Gain (Loss) on Disposal	Total Gain (Loss) on Disposal	Bond Interest/Stock Dividends Received During Year	Stated Contractual Maturity Date	NAIC Designation, NAIC Designation Modifier and SVO Administrative Symbol		
..89181J-AA-0	TPMT 2023-1 A1		09/01/2024	MBS PMT		14,829	14,829	14,137	14,752	0	.77	0	.77	0	14,829	0	0	0	.375	01/25/2063	1.A		
..90831L-AA-6	UNITED AIR 2016-1 AA P		07/07/2024	SINK		18,468	18,468	18,204	18,438	0	.30	0	.30	0	18,468	0	0	0	.573	07/07/2028	1.F FE		
..92343V-GH-1	VERIZON COMMUNICATIONS		08/09/2024	EXCHANGE		999,759	1,000,000	999,550	999,721	0	.39	0	.39	0	999,759	0	0	0	18,492	03/22/2028	2.A FE		
..92539L-AC-4	VERSUS 2021-3		09/01/2024	MBS PMT		12,000	12,000	12,000	12,000	0	0	0	0	0	12,000	0	0	0	.118	06/25/2066	1.C FE		
..94989Q-AV-2	WFCM 2015-SG1 A4		09/01/2024	MBS PMT		14,603	14,603	14,489	14,536	0	.68	0	.68	0	14,603	0	0	0	.415	09/15/2048	1.A		
..BSL6VS-94-9	FANNIE MAE FNMA_24-60		08/14/2024	CANCEL/CORRECT		1,500,000	1,500,000	1,500,000	0	0	0	0	0	1,500,000	0	0	0	0	1,344	09/25/2054	1.A		
..009090-AA-9	AIR CANADA 2015-1A PTT		09/15/2024	SINK		9,650	9,650	9,923	9,680	0	(30)	0	(30)	0	9,650	0	0	0	.347	03/15/2027	1.F FE		
..13607H-YF-3	CANADIAN IMPERIAL BK		08/08/2024	TDU		991,600	1,000,000	939,500	978,293	0	16,451	0	16,451	0	994,745	0	(3,145)	(3,145)	8,083	10/18/2024	1.F FE		
..03766G-AL-6	APID 2017-26A A1AR	C	07/18/2024	MBS PMT		122,719	122,719	122,719	122,719	0	0	0	0	0	122,719	0	0	0	6,073	07/18/2029	1.A FE		
..03880R-AA-7	ARBOR REALTY COLLATERALIZED LOAN OBLIGAT	C	09/15/2024	MBS PMT		63,044	63,044	63,083	63,062	0	(18)	0	(18)	0	63,044	0	0	0	2,878	11/15/2036	1.A FE		
..04002P-AA-2	AREIT 2021-CRES	C	09/17/2024	MBS PMT		70,038	70,038	66,920	69,105	0	934	0	934	0	70,038	0	0	0	2,965	11/17/2038	1.A FE		
..04016G-BB-3	ARES 2016-40A A1RR	D	09/15/2024	MBS PMT		135,326	135,326	135,326	135,326	0	0	0	0	0	135,326	0	0	0	7,072	01/15/2029	1.A FE		
..05608X-AA-0	BXMT 2020FL3	C	09/15/2024	MBS PMT		48,391	48,391	48,391	48,391	0	0	0	0	0	48,391	0	0	0	2,280	11/15/2037	1.A FE		
..12481Q-AC-9	CBAM 2018-5A A	D	07/17/2024	MBS PMT		118,555	118,555	118,895	118,077	0	478	0	478	0	118,555	0	0	0	5,980	04/17/2031	1.A FE		
..23232P-AF-7	DNB BK ASA	C	08/27/2024	NORTHERN TRUST		816,935	850,000	850,000	850,000	0	0	0	0	0	850,000	0	(33,065)	(33,065)	9,101	09/16/2026	1.F FE		
..36318W-AK-6	GALXY 2013-15A ARR	D	07/15/2024	MBS PMT		179,698	179,698	179,698	179,698	0	0	0	0	0	179,698	0	0	0	8,963	10/15/2030	1.A FE		
..39809L-AA-2	GSTNE 2019-FL2 A	C	09/15/2024	MBS PMT		22,839	22,839	22,839	22,839	0	0	0	0	0	22,839	0	0	0	1,151	09/15/2037	1.A FE		
..42704R-AA-9	HERA 2021-FL1 A	D	09/18/2024	MBS PMT		72,568	72,568	72,568	72,568	0	0	0	0	0	72,568	0	0	0	2,816	02/18/2038	1.A FE		
..44040H-AA-0	HORZN 2019-1 A	C	09/15/2024	MBS PMT		5,695	5,695	5,695	5,688	0	7	0	7	0	5,695	0	0	0	148	07/15/2039	2.C FE		
..46651N-AA-2	JOLAR 2019-1 A	C	09/15/2024	MBS PMT		6,265	6,265	6,265	6,256	0	9	0	9	0	6,265	0	0	0	166	04/15/2044	1.G FE		
..62432H-AJ-9	MVEW 2017-1A AR	D	07/16/2024	MBS PMT		82,362	82,362	82,362	82,362	0	0	0	0	0	82,362	0	0	0	4,198	10/16/2029	1.A FE		
..62432L-AL-5	MVEW 2017-2A AR	C	07/16/2024	MBS PMT		173,569	173,569	173,569	173,569	0	0	0	0	0	173,569	0	0	0	8,781	01/16/2031	1.A FE		
..72353P-AA-4	PION 2019-1 A	C	09/15/2024	MBS PMT		7,256	7,256	7,256	7,246	0	10	0	10	0	7,256	0	0	0	193	06/15/2044	2.B FE		
..75383H-AA-9	RPTOR 2019-1 A	C	09/23/2024	MBS PMT		5,827	5,827	5,827	4,684	1,144	0	0	1,144	0	5,827	0	0	0	168	08/23/2044	4.A FE		
..78485H-AA-7	STWD 2019-FL1 A	C	07/15/2024	MBS PMT		16,600	16,600	16,600	16,600	0	0	0	0	0	16,600	0	0	0	.641	07/15/2038	1.A FE		
..78486B-AA-2	STWD 2021-FL2 A	C	09/18/2024	MBS PMT		51,952	51,952	51,952	51,952	0	0	0	0	0	51,952	0	0	0	2,387	04/18/2038	1.A FE		
..83610K-AJ-2	SNDPT 2017-2A AR	D	07/25/2024	MBS PMT		103,966	103,966	103,966	103,966	0	0	0	0	0	103,966	0	0	0	5,210	07/25/2030	1.A FE		
..92330Y-AN-3	VENTR 2018-33A A1L	D	07/15/2024	MBS PMT		29,239	29,239	29,239	29,239	0	0	0	0	0	29,239	0	0	0	1,478	07/15/2031	1.A FE		
..92916G-BE-3	INGIM 2012-4A A1R3	C	07/15/2024	MBS PMT		36,552	36,552	36,552	36,552	0	0	0	0	0	36,552	0	0	0	1,831	10/15/2030	1.A FE		
1109999999. Subtotal - Bonds - Industrial and Miscellaneous (Unaffiliated)						14,144,845	14,227,123	14,090,685	12,160,971	1,144	26,780	0	27,924	0	14,095,378	0	49,467	49,467	388,600	XXX	XXX		
2509999997. Total - Bonds - Part 4						37,671,890	38,257,355	37,779,017	29,277,522	1,144	38,688	0	39,832	0	37,739,670	0	(67,780)	(67,780)	874,234	XXX	XXX		
2509999998. Total - Bonds - Part 5						XXX	XXX	XXX	XXX	XXX	XXX	XXX	XXX	XXX	XXX	XXX	XXX	XXX	XXX	XXX	XXX	XXX	
2509999999. Total - Bonds						37,671,890	38,257,355	37,779,017	29,277,522	1,144	38,688	0	39,832	0	37,739,670	0	(67,780)	(67,780)	874,234	XXX	XXX		
4509999997. Total - Preferred Stocks - Part 4						0	XXX	0	0	0	0	0	0	0	0	0	0	0	0	0	0	XXX	XXX
4509999998. Total - Preferred Stocks - Part 5						XXX	XXX	XXX	XXX	XXX	XXX	XXX	XXX	XXX	XXX	XXX	XXX	XXX	XXX	XXX	XXX	XXX	XXX
4509999999. Total - Preferred Stocks						0	XXX	0	0	0	0	0	0	0	0	0	0	0	0	0	0	XXX	XXX
5989999997. Total - Common Stocks - Part 4						0	XXX	0	0	0	0	0	0	0	0	0	0	0	0	0	0	XXX	XXX
5989999998. Total - Common Stocks - Part 5						XXX	XXX	XXX	XXX	XXX	XXX	XXX	XXX	XXX	XXX	XXX	XXX	XXX	XXX	XXX	XXX	XXX	XXX
5989999999. Total - Common Stocks						0	XXX	0	0	0	0	0	0	0	0	0	0	0	0	0	0	XXX	XXX
5999999999. Total - Preferred and Common Stocks						0	XXX	0	0	0	0	0	0	0	0	0	0	0	0	0	0	XXX	XXX
6009999999 - Totals						37,671,890	XXX	37,779,017	29,277,522	1,144	38,688	0	39,832	0	37,739,670	0	(67,780)	(67,780)	874,234	XXX	XXX		

E05.9

Schedule DB - Part A - Section 1 - Options, Caps, Floors, Collars, Swaps and Forwards Open

N O N E

Schedule DB - Part B - Section 1 - Futures Contracts Open

N O N E

Schedule DB - Part B - Section 1B - Brokers with whom cash deposits have been made

N O N E

Schedule DB - Part D - Section 1 - Counterparty Exposure for Derivative Instruments Open

N O N E

Schedule DB - Part D-Section 2 - Collateral for Derivative Instruments Open - Pledged By

N O N E

Schedule DB - Part D-Section 2 - Collateral for Derivative Instruments Open - Pledged To

N O N E

Schedule DB - Part E - Derivatives Hedging Variable Annuity Guarantees

N O N E

Schedule DL - Part 1 - Reinvested Collateral Assets Owned

N O N E

Schedule DL - Part 2 - Reinvested Collateral Assets Owned

N O N E

