



HEALTH QUARTERLY STATEMENT

AS OF SEPTEMBER 30, 2024
OF THE CONDITION AND AFFAIRS OF THE

Priority Health Choice, Inc.

NAIC Group Code 3383 3383 NAIC Company Code 11520 Employer's ID Number 32-0016523
(Current) (Prior)

Organized under the Laws of Michigan, State of Domicile or Port of Entry MI

Country of Domicile United States of America

Licensed as business type: Health Maintenance Organization

Is HMO Federally Qualified? Yes [] No [X]

Incorporated/Organized 06/03/2002 Commenced Business 10/01/2002

Statutory Home Office 1231 East Beltline NE, Grand Rapids, MI, US 49525-4501
(Street and Number) (City or Town, State, Country and Zip Code)

Main Administrative Office 1231 East Beltline NE
(Street and Number)
Grand Rapids, MI, US 49525-4501, 616-464-8931
(City or Town, State, Country and Zip Code) (Area Code) (Telephone Number)

Mail Address 1231 East Beltline NE, Grand Rapids, MI, US 49525-4501
(Street and Number or P.O. Box) (City or Town, State, Country and Zip Code)

Primary Location of Books and Records 1231 East Beltline NE
(Street and Number)
Grand Rapids, MI, US 49525-4501, 616-464-8131
(City or Town, State, Country and Zip Code) (Area Code) (Telephone Number)

Internet Website Address www.priorityhealth.com

Statutory Statement Contact James Becker, 616-575-7588
(Name) (Area Code) (Telephone Number)
james.becker2@corewellhealth.org, 616-942-7916
(E-mail Address) (FAX Number)

OFFICERS

President Praveen Gope Thadani Secretary Kimberly Lynn Thomas
Treasurer Nicholas Patrick Gates

OTHER

DIRECTORS OR TRUSTEES

Praveen Gope Thadani Michael Adam Jasperson Kimberly Lynn Thomas
Chelsee Lee Stark Nicholas Patrick Gates Joyce Chan Russell
Elif Esin Oker #

State of Michigan SS:
County of _____

The officers of this reporting entity being duly sworn, each depose and say that they are the described officers of said reporting entity, and that on the reporting period stated above, all of the herein described assets were the absolute property of the said reporting entity, free and clear from any liens or claims thereon, except as herein stated, and that this statement, together with related exhibits, schedules and explanations therein contained, annexed or referred to, is a full and true statement of all the assets and liabilities and of the condition and affairs of the said reporting entity as of the reporting period stated above, and of its income and deductions therefrom for the period ended, and have been completed in accordance with the NAIC Annual Statement Instructions and Accounting Practices and Procedures manual except to the extent that: (1) state law may differ; or, (2) that state rules or regulations require differences in reporting not related to accounting practices and procedures, according to the best of their information, knowledge and belief, respectively. Furthermore, the scope of this attestation by the described officers also includes the related corresponding electronic filing with the NAIC, when required, that is an exact copy (except for formatting differences due to electronic filing) of the enclosed statement. The electronic filing may be requested by various regulators in lieu of or in addition to the enclosed statement.

Praveen Gope Thadani
President

Nicholas Patrick Gates
Treasurer

Kimberly Lynn Thomas
Secretary

Subscribed and sworn to before me this _____ day of _____

a. Is this an original filing? Yes [X] No []
b. If no,
1. State the amendment number.....
2. Date filed
3. Number of pages attached.....

STATEMENT AS OF SEPTEMBER 30, 2024 OF THE Priority Health Choice, Inc.

ASSETS

	Current Statement Date			4 December 31 Prior Year Net Admitted Assets
	1 Assets	2 Nonadmitted Assets	3 Net Admitted Assets (Cols. 1 - 2)	
1. Bonds	1,121,596		1,121,596	1,103,413
2. Stocks:				
2.1 Preferred stocks			0	0
2.2 Common stocks	157,824,961		157,824,961	146,298,755
3. Mortgage loans on real estate:				
3.1 First liens			0	0
3.2 Other than first liens.....			0	0
4. Real estate:				
4.1 Properties occupied by the company (less \$ encumbrances)			0	0
4.2 Properties held for the production of income (less \$ encumbrances)			0	0
4.3 Properties held for sale (less \$ encumbrances)			0	0
5. Cash (\$(14,240,311)), cash equivalents (\$158,792,065) and short-term investments (\$ 65,247,129)	209,798,883		209,798,883	200,028,646
6. Contract loans (including \$ premium notes)			0	0
7. Derivatives			0	0
8. Other invested assets			0	0
9. Receivables for securities			0	0
10. Securities lending reinvested collateral assets			0	0
11. Aggregate write-ins for invested assets	0	0	0	0
12. Subtotals, cash and invested assets (Lines 1 to 11)	368,745,440	0	368,745,440	347,430,814
13. Title plants less \$ charged off (for Title insurers only)			0	0
14. Investment income due and accrued	710,989		710,989	732,654
15. Premiums and considerations:				
15.1 Uncollected premiums and agents' balances in the course of collection	5,463,175		5,463,175	3,160,283
15.2 Deferred premiums, agents' balances and installments booked but deferred and not yet due (including \$ earned but unbilled premiums)			0	0
15.3 Accrued retrospective premiums (\$ 109,479) and contracts subject to redetermination (\$)	109,479		109,479	3,664,351
16. Reinsurance:				
16.1 Amounts recoverable from reinsurers	895,545		895,545	436,212
16.2 Funds held by or deposited with reinsured companies			0	0
16.3 Other amounts receivable under reinsurance contracts	223,987		223,987	223,987
17. Amounts receivable relating to uninsured plans	5,917,478		5,917,478	3,575,245
18.1 Current federal and foreign income tax recoverable and interest thereon			0	0
18.2 Net deferred tax asset			0	0
19. Guaranty funds receivable or on deposit			0	0
20. Electronic data processing equipment and software			0	0
21. Furniture and equipment, including health care delivery assets (\$)			0	0
22. Net adjustment in assets and liabilities due to foreign exchange rates			0	0
23. Receivables from parent, subsidiaries and affiliates	18,452		18,452	12,439
24. Health care (\$ 27,104,705) and other amounts receivable	27,116,904		27,116,904	20,238,542
25. Aggregate write-ins for other than invested assets	36,773,553	564,566	36,208,987	33,860,065
26. Total assets excluding Separate Accounts, Segregated Accounts and Protected Cell Accounts (Lines 12 to 25)	445,975,002	564,566	445,410,436	413,334,592
27. From Separate Accounts, Segregated Accounts and Protected Cell Accounts			0	0
28. Total (Lines 26 and 27)	445,975,002	564,566	445,410,436	413,334,592
DETAILS OF WRITE-INS				
1101.				
1102.				
1103.				
1198. Summary of remaining write-ins for Line 11 from overflow page	0	0	0	0
1199. Totals (Lines 1101 through 1103 plus 1198)(Line 11 above)	0	0	0	0
2501. Prepaids	564,566	564,566	0	0
2502. Insurance Providers Assessment	36,208,987		36,208,987	33,860,065
2503.				
2598. Summary of remaining write-ins for Line 25 from overflow page	0	0	0	0
2599. Totals (Lines 2501 through 2503 plus 2598)(Line 25 above)	36,773,553	564,566	36,208,987	33,860,065

LIABILITIES, CAPITAL AND SURPLUS

	Current Period			Prior Year
	1 Covered	2 Uncovered	3 Total	4 Total
1. Claims unpaid (less \$ reinsurance ceded)	112,884,917		112,884,917	95,601,506
2. Accrued medical incentive pool and bonus amounts	6,059,436		6,059,436	14,265,307
3. Unpaid claims adjustment expenses	1,588,650		1,588,650	1,366,305
4. Aggregate health policy reserves, including the liability of \$0 for medical loss ratio rebate per the Public Health Service Act	268,849		268,849	144,569
5. Aggregate life policy reserves			0	0
6. Property/casualty unearned premium reserve			0	0
7. Aggregate health claim reserves			0	0
8. Premiums received in advance	494,258		494,258	380,656
9. General expenses due or accrued	46,410,083		46,410,083	44,990,151
10.1 Current federal and foreign income tax payable and interest thereon (including \$ on realized gains (losses))			0	0
10.2 Net deferred tax liability			0	0
11. Ceded reinsurance premiums payable			0	0
12. Amounts withheld or retained for the account of others.....	3,022,926		3,022,926	2,088,712
13. Remittances and items not allocated			0	0
14. Borrowed money (including \$ current) and interest thereon \$ (including \$ current)			0	0
15. Amounts due to parent, subsidiaries and affiliates	11,537,806		11,537,806	20,111,471
16. Derivatives			0	0
17. Payable for securities	236,533		236,533	235,936
18. Payable for securities lending			0	0
19. Funds held under reinsurance treaties (with \$ authorized reinsurers, \$ unauthorized reinsurers and \$ certified reinsurers).....			0	0
20. Reinsurance in unauthorized and certified (\$) companies			0	0
21. Net adjustments in assets and liabilities due to foreign exchange rates			0	0
22. Liability for amounts held under uninsured plans	5,110,849		5,110,849	125,184
23. Aggregate write-ins for other liabilities (including \$ current)	0	0	0	0
24. Total liabilities (Lines 1 to 23)	187,614,307	0	187,614,307	179,309,797
25. Aggregate write-ins for special surplus funds	XXX	XXX	0	0
26. Common capital stock	XXX	XXX	10,000	10,000
27. Preferred capital stock	XXX	XXX		
28. Gross paid in and contributed surplus	XXX	XXX	11,326,877	11,326,877
29. Surplus notes	XXX	XXX		
30. Aggregate write-ins for other than special surplus funds	XXX	XXX	1,000,000	1,000,000
31. Unassigned funds (surplus)	XXX	XXX	245,459,252	221,687,918
32. Less treasury stock, at cost:				
32.1 shares common (value included in Line 26 \$)	XXX	XXX		
32.2 shares preferred (value included in Line 27 \$)	XXX	XXX		
33. Total capital and surplus (Lines 25 to 31 minus Line 32)	XXX	XXX	257,796,129	234,024,795
34. Total liabilities, capital and surplus (Lines 24 and 33)	XXX	XXX	445,410,436	413,334,592
DETAILS OF WRITE-INS				
2301.				
2302.				
2303.				
2398. Summary of remaining write-ins for Line 23 from overflow page	0	0	0	0
2399. Totals (Lines 2301 through 2303 plus 2398)(Line 23 above)	0	0	0	0
2501.	XXX	XXX		
2502.	XXX	XXX		
2503.	XXX	XXX		
2598. Summary of remaining write-ins for Line 25 from overflow page	XXX	XXX	0	0
2599. Totals (Lines 2501 through 2503 plus 2598)(Line 25 above)	XXX	XXX	0	0
3001. Appropriated Retained Earnings	XXX	XXX	1,000,000	1,000,000
3002.	XXX	XXX		
3003.	XXX	XXX		
3098. Summary of remaining write-ins for Line 30 from overflow page	XXX	XXX	0	0
3099. Totals (Lines 3001 through 3003 plus 3098)(Line 30 above)	XXX	XXX	1,000,000	1,000,000

STATEMENT OF REVENUE AND EXPENSES

	Current Year To Date		Prior Year To Date	Prior Year Ended December 31
	1 Uncovered	2 Total	3 Total	4 Total
1. Member Months	XXX	2,112,601	2,454,121	3,227,029
2. Net premium income (including \$ non-health premium income)	XXX	857,766,266	902,953,678	1,201,770,021
3. Change in unearned premium reserves and reserve for rate credits	XXX	11,447		(144,569)
4. Fee-for-service (net of \$ medical expenses)	XXX			
5. Risk revenue	XXX			
6. Aggregate write-ins for other health care related revenues	XXX	54,313,481	50,790,098	67,720,130
7. Aggregate write-ins for other non-health revenues	XXX	0	0	0
8. Total revenues (Lines 2 to 7)	XXX	912,091,194	953,743,776	1,269,345,582
Hospital and Medical:				
9. Hospital/medical benefits		502,376,716	484,972,590	660,263,367
10. Other professional services		34,939,460	26,949,567	38,449,226
11. Outside referrals		6,611,937	7,794,127	10,817,576
12. Emergency room and out-of-area		40,178,260	41,986,096	56,081,686
13. Prescription drugs		217,880,932	225,130,298	297,245,122
14. Aggregate write-ins for other hospital and medical	0	0	0	0
15. Incentive pool, withhold adjustments and bonus amounts		(2,819,341)	15,323,909	14,004,086
16. Subtotal (Lines 9 to 15)	0	799,167,964	802,156,587	1,076,861,063
Less:				
17. Net reinsurance recoveries		4,216,086	2,938,421	1,283,790
18. Total hospital and medical (Lines 16 minus 17)	0	794,951,878	799,218,166	1,075,577,273
19. Non-health claims (net)				
20. Claims adjustment expenses, including \$ 12,374,289 cost containment expenses		25,395,202	23,653,987	32,889,585
21. General administrative expenses		91,531,666	87,185,379	117,280,044
22. Increase in reserves for life and accident and health contracts (including \$ increase in reserves for life only)				0
23. Total underwriting deductions (Lines 18 through 22)	0	911,878,746	910,057,532	1,225,746,902
24. Net underwriting gain or (loss) (Lines 8 minus 23)	XXX	212,448	43,686,244	43,598,680
25. Net investment income earned		16,376,570	13,954,711	19,708,938
26. Net realized capital gains (losses) less capital gains tax of \$		1,174,690	(1,043,874)	(17,740,184)
27. Net investment gains (losses) (Lines 25 plus 26)	0	17,551,260	12,910,837	1,968,754
28. Net gain or (loss) from agents' or premium balances charged off [(amount recovered \$) (amount charged off \$)]				
29. Aggregate write-ins for other income or expenses	0	0	0	0
30. Net income or (loss) after capital gains tax and before all other federal income taxes (Lines 24 plus 27 plus 28 plus 29)	XXX	17,763,708	56,597,081	45,567,434
31. Federal and foreign income taxes incurred	XXX			
32. Net income (loss) (Lines 30 minus 31)	XXX	17,763,708	56,597,081	45,567,434
DETAILS OF WRITE-INS				
0601. Insurance Providers Assessment	XXX	54,313,481	50,790,098	67,720,130
0602.	XXX			
0603.	XXX			
0698. Summary of remaining write-ins for Line 6 from overflow page	XXX	0	0	0
0699. Totals (Lines 0601 through 0603 plus 0698)(Line 6 above)	XXX	54,313,481	50,790,098	67,720,130
0701.	XXX			
0702.	XXX			
0703.	XXX			
0798. Summary of remaining write-ins for Line 7 from overflow page	XXX	0	0	0
0799. Totals (Lines 0701 through 0703 plus 0798)(Line 7 above)	XXX	0	0	0
1401.				
1402.				
1403.				
1498. Summary of remaining write-ins for Line 14 from overflow page	0	0	0	0
1499. Totals (Lines 1401 through 1403 plus 1498)(Line 14 above)	0	0	0	0
2901. Other Income			0	0
2902.				
2903.				
2998. Summary of remaining write-ins for Line 29 from overflow page	0	0	0	0
2999. Totals (Lines 2901 through 2903 plus 2998)(Line 29 above)	0	0	0	0

STATEMENT OF REVENUE AND EXPENSES (Continued)

	1 Current Year to Date	2 Prior Year to Date	3 Prior Year Ended December 31
CAPITAL AND SURPLUS ACCOUNT			
33. Capital and surplus prior reporting year.....	234,024,795	226,971,763	226,971,763
34. Net income or (loss) from Line 32.....	17,763,708	56,597,081	45,567,434
35. Change in valuation basis of aggregate policy and claim reserves.....			
36. Change in net unrealized capital gains (losses) less capital gains tax of \$.....	6,572,192	143,327	25,700,583
37. Change in net unrealized foreign exchange capital gain or (loss).....			
38. Change in net deferred income tax.....			
39. Change in nonadmitted assets.....	(564,566)	579,552	785,015
40. Change in unauthorized and certified reinsurance.....	0	0	0
41. Change in treasury stock.....	0	0	0
42. Change in surplus notes.....	0	0	0
43. Cumulative effect of changes in accounting principles.....			
44. Capital Changes:			
44.1 Paid in.....			0
44.2 Transferred from surplus (Stock Dividend).....	0	0	0
44.3 Transferred to surplus.....			
45. Surplus adjustments:			
45.1 Paid in.....	0	0	0
45.2 Transferred to capital (Stock Dividend).....			
45.3 Transferred from capital.....			
46. Dividends to stockholders.....			(65,000,000)
47. Aggregate write-ins for gains or (losses) in surplus.....	0	0	0
48. Net change in capital & surplus (Lines 34 to 47).....	23,771,334	57,319,960	7,053,032
49. Capital and surplus end of reporting period (Line 33 plus 48)	257,796,129	284,291,723	234,024,795
DETAILS OF WRITE-INS			
4701.			
4702.			
4703.			
4798. Summary of remaining write-ins for Line 47 from overflow page.....	0	0	0
4799. Totals (Lines 4701 through 4703 plus 4798)(Line 47 above)	0	0	0

STATEMENT AS OF SEPTEMBER 30, 2024 OF THE Priority Health Choice, Inc.

CASH FLOW

	1 Current Year To Date	2 Prior Year To Date	3 Prior Year Ended December 31
Cash from Operations			
1. Premiums collected net of reinsurance	859,267,574	920,986,416	1,201,852,325
2. Net investment income	16,380,052	13,776,928	19,464,052
3. Miscellaneous income	54,313,481	50,790,098	67,720,130
4. Total (Lines 1 to 3)	929,961,107	985,553,442	1,289,036,507
5. Benefit and loss related payments	793,212,033	798,505,148	1,074,311,635
6. Net transfers to Separate Accounts, Segregated Accounts and Protected Cell Accounts			
7. Commissions, expenses paid and aggregate write-ins for deductions	112,641,159	120,559,109	168,754,902
8. Dividends paid to policyholders			
9. Federal and foreign income taxes paid (recovered) net of \$ tax on capital gains (losses)	0	0	0
10. Total (Lines 5 through 9)	905,853,192	919,064,257	1,243,066,537
11. Net cash from operations (Line 4 minus Line 10)	24,107,915	66,489,185	45,969,970
Cash from Investments			
12. Proceeds from investments sold, matured or repaid:			
12.1 Bonds	0	0	0
12.2 Stocks	3,000,000	2,993,954	3,027,644
12.3 Mortgage loans	0	0	0
12.4 Real estate	0	0	0
12.5 Other invested assets	0	0	0
12.6 Net gains or (losses) on cash, cash equivalents and short-term investments	0	0	0
12.7 Miscellaneous proceeds	597	3,528,906	3,530,680
12.8 Total investment proceeds (Lines 12.1 to 12.7)	3,000,597	6,522,860	6,558,324
13. Cost of investments acquired (long-term only):			
13.1 Bonds	(3)	3	0
13.2 Stocks	6,779,326	15,993,560	17,571,148
13.3 Mortgage loans	0	0	0
13.4 Real estate	0	0	0
13.5 Other invested assets	0	0	0
13.6 Miscellaneous applications	0	0	0
13.7 Total investments acquired (Lines 13.1 to 13.6)	6,779,323	15,993,563	17,571,148
14. Net increase (or decrease) in contract loans and premium notes	0	0	0
15. Net cash from investments (Line 12.8 minus Line 13.7 and Line 14)	(3,778,726)	(9,470,703)	(11,012,824)
Cash from Financing and Miscellaneous Sources			
16. Cash provided (applied):			
16.1 Surplus notes, capital notes	0	0	0
16.2 Capital and paid in surplus, less treasury stock	0	0	0
16.3 Borrowed funds	0	0	0
16.4 Net deposits on deposit-type contracts and other insurance liabilities	0	0	0
16.5 Dividends to stockholders	0	0	65,000,000
16.6 Other cash provided (applied)	(10,558,952)	19,541,160	19,422,759
17. Net cash from financing and miscellaneous sources (Line 16.1 through Line 16.4 minus Line 16.5 plus Line 16.6)	(10,558,952)	19,541,160	(45,577,241)
RECONCILIATION OF CASH, CASH EQUIVALENTS AND SHORT-TERM INVESTMENTS			
18. Net change in cash, cash equivalents and short-term investments (Line 11, plus Lines 15 and 17)	9,770,237	76,559,642	(10,620,095)
19. Cash, cash equivalents and short-term investments:			
19.1 Beginning of year	200,028,646	210,648,741	210,648,741
19.2 End of period (Line 18 plus Line 19.1)	209,798,883	287,208,383	200,028,646

Note: Supplemental disclosures of cash flow information for non-cash transactions:

--	--	--	--

STATEMENT AS OF SEPTEMBER 30, 2024 OF THE Priority Health Choice, Inc.

EXHIBIT OF PREMIUMS, ENROLLMENT AND UTILIZATION

	1 Total	Comprehensive (Hospital & Medical)		4 Medicare Supplement	5 Vision Only	6 Dental Only	7 Federal Employees Health Benefits Plan	8 Title XVIII Medicare	9 Title XIX Medicaid	10 Credit A&H	11 Disability Income	12 Long-Term Care	13 Other Health	14 Other Non-Health
		2 Individual	3 Group											
Total Members at end of:														
1. Prior Year	252,344	0	0	0	0	0	0	15,900	236,444	0	0	0	0	0
2. First Quarter	241,668	0	0	0	0	0	0	15,224	226,444	0	0	0	0	0
3. Second Quarter	224,020	0	0	0	0	0	0	13,777	210,243	0	0	0	0	0
4. Third Quarter	223,728							14,526	209,202					
5. Current Year	0													
6. Current Year Member Months	2,112,601							142,956	1,969,645					
Total Member Ambulatory Encounters for Period:														
7. Physician	1,825,256							123,512	1,701,744					
8. Non-Physician	318,273							21,537	296,736					
9. Total	2,143,529	0	0	0	0	0	0	145,049	1,998,480	0	0	0	0	0
10. Hospital Patient Days Incurred	109,571							31,260	78,311					
11. Number of Inpatient Admissions	17,704							3,851	13,853					
12. Health Premiums Written (a)	858,824,905							163,520,993	695,303,912					
13. Life Premiums Direct	0													
14. Property/Casualty Premiums Written	0													
15. Health Premiums Earned.....	858,836,352							163,532,440	695,303,912					
16. Property/Casualty Premiums Earned	0													
17. Amount Paid for Provision of Health Care Services.....	785,874,338							137,560,742	648,313,596					
18. Amount Incurred for Provision of Health Care Services	799,167,964							137,405,357	661,762,607					

(a) For health premiums written: amount of Medicare Title XVIII exempt from state taxes or fees \$ 163,520,993

UNDERWRITING AND INVESTMENT EXHIBIT

ANALYSIS OF CLAIMS UNPAID - PRIOR YEAR - NET OF REINSURANCE

Line of Business	Claims Paid Year to Date		Liability End of Current Quarter		5 Claims Incurred in Prior Years (Columns 1 + 3)	6 Estimated Claim Reserve and Claim Liability December 31 of Prior Year
	1 On Claims Incurred Prior to January 1 of Current Year	2 On Claims Incurred During the Year	3 On Claims Unpaid Dec. 31 of Prior Year	4 On Claims Incurred During the Year		
1. Comprehensive (hospital and medical) individual					0	0
2. Comprehensive (hospital and medical) group					0	0
3. Medicare Supplement					0	0
4. Vision only					0	0
5. Dental only					0	0
6. Federal Employees Health Benefits Plan					0	0
7. Title XVIII - Medicare	16,105,608	136,447,198	157,896	17,436,052	16,263,504	17,626,327
8. Title XIX - Medicaid	70,423,485	580,489,455	775,035	94,515,934	71,198,520	77,975,179
9. Credit A&H					0	0
10. Disability Income					0	0
11. Long-term care					0	0
12. Other health					0	0
13. Health subtotal (Lines 1 to 12)	86,529,093	716,936,653	932,931	111,951,986	87,462,024	95,601,506
14. Health care receivables (a)		22,977,936			0	0
15. Other non-health					0	0
16. Medical incentive pools and bonus amounts	15,604,900	(10,218,371)	0	6,059,436	15,604,900	14,265,307
17. Totals (Lines 13 - 14 + 15 + 16)	102,133,993	683,740,346	932,931	118,011,422	103,066,924	109,866,813

(a) Excludes \$ loans or advances to providers not yet expensed.

NOTES TO FINANCIAL STATEMENTS

NOTE 1 Summary of Significant Accounting Policies and Going Concern
A. Accounting Practices

The accompanying financial statements have been prepared in conformity with accounting practices prescribed or permitted by the Michigan Department of Insurance and Financial Services (DIFS). DIFS requires that insurance contracts domiciled in Michigan prepare their statutory-basis financial statements in accordance with the National Association of Insurance Commissioners' (NAIC) Accounting Practices and Procedures Manual, subject to any deviations prescribed or permitted by DIFS.

	SSAP #	F/S Page	F/S Line #	2024	2023
NET INCOME					
(1) State basis (Page 4, Line 32, Columns 2 & 4)	XXX	XXX	XXX	\$ 17,763,708	\$ 45,567,434
(2) State Prescribed Practices that are an increase/ (decrease) from NAIC SAP:					
(3) State Permitted Practices that are an increase/(decrease) from NAIC SAP:					
(4) NAIC SAP (1-2-3=4)	XXX	XXX	XXX	\$ 17,763,708	\$ 45,567,434
SURPLUS					
(5) State basis (Page 3, Line 33, Columns 3 & 4)	XXX	XXX	XXX	\$ 257,796,129	\$ 234,024,795
(6) State Prescribed Practices that are an increase/(decrease) from NAIC SAP:					
(7) State Permitted Practices that are an increase/(decrease) from NAIC SAP:					
(8) NAIC SAP (5-6-7=8)	XXX	XXX	XXX	\$ 257,796,129	\$ 234,024,795

C. Accounting Policy

(2) Basis for Bonds, Mandatory Convertible Securities, SVO-Identified Investments and Amortization Method Investments in bonds are carried at amortized cost. The cost of bonds is adjusted for amortization of premiums and discounts to maturity using a level-yield method. Realized gains and losses are determined using the specific identification method and are included in operations. The fair value of investments is determined based upon quoted market prices.

(6) Basis for Loan-Backed Securities and Adjustment Methodology
Loan-backed securities as well as other asset-backed securities are held and are reported at their amortized cost.

D. Going Concern
NONE

NOTE 2 Accounting Changes and Corrections of Errors

No significant changes

NOTE 3 Business Combinations and Goodwill

No significant changes

NOTE 4 Discontinued Operations

No significant changes

NOTE 5 Investments

D. Loan-Backed Securities - NOT APPLICABLE

E. Dollar Repurchase Agreements and/or Securities Lending Transactions
(3) Collateral Received - NOT APPLICABLE

F. Repurchase Agreements Transactions Accounted for as Secured Borrowing - NOT APPLICABLE

G. Reverse Repurchase Agreements Transactions Accounted for as Secured Borrowing - NOT APPLICABLE

H. Repurchase Agreements Transactions Accounted for as a Sale - NOT APPLICABLE

I. Reverse Repurchase Agreements Transactions Accounted for as a Sale - NOT APPLICABLE

M. Working Capital Finance Investments

2. Aggregate Maturity Distribution on the Underlying Working Capital Finance Programs - NOT APPLICABLE

3. Any Events of Default or Working Capital Finance Investments - NOT APPLICABLE

N. Offsetting and Netting of Assets and Liabilities - NOT APPLICABLE

R. Reporting Entity's Share of Cash Pool by Asset Type - NOT APPLICABLE

NOTE 6 Joint Ventures, Partnerships and Limited Liability Companies

No significant changes.

NOTE 7 Investment Income

No significant changes.

NOTE 8 Derivative Instruments

A. Derivatives under SSAP No. 86—Derivatives
(8) Total Premium Costs for Contracts - NOT APPLICABLE

B. Derivatives under SSAP No. 108—Derivative Hedging Variable Annuity Guarantees
(2) Recognition of gains/losses and deferred assets and liabilities - NOT APPLICABLE

NOTE 9 Income Taxes

No significant changes.

NOTES TO FINANCIAL STATEMENTS

NOTE 10 Information Concerning Parent, Subsidiaries, Affiliates and Other Related Parties

No significant changes.

NOTE 11 Debt

B. FHLB (Federal Home Loan Bank) Agreements - NOT APPLICABLE

NOTE 12 Retirement Plans, Deferred Compensation, Postemployment Benefits and Compensated Absences and Other Postretirement Benefit Plans

A. Defined Benefit Plan - NOT APPLICABLE

NOTE 13 Capital and Surplus, Dividend Restrictions and Quasi-Reorganizations

No significant changes.

NOTE 14 Liabilities, Contingencies and Assessments

B. Assessments

Effective October 1, 2018 the Plan is required to pay the annual Insurance Provider Assessment. The assessment for each HMO is based on the amount determined by the Michigan Department of Health and Human Services ("MDHHS") and applied to the prior year member months for the Medicaid line of business. The assessment is fully reimbursed by MDHHS. The Plan recognized \$54,313,481 as an aggregate write-in for other healthcare related revenues and \$54,313,481 as general administrative expenses for the quarter ended September 30, 2024. The Plan has \$36,208,987 recorded as an aggregate write-in for other than invested assets and \$36,208,987 recorded as general expenses due or accrued on the Statutory Statements of Admitted Assets, Liabilities, and Capital and Surplus at September 30, 2024 related to the second and third quarter payments and reimbursement due on the 2024 assessments.

NOTE 15 Leases

No significant changes.

NOTE 16 Information About Financial Instruments With Off-Balance Sheet Risk and Financial Instruments With Concentrations of Credit Risk

No significant changes.

NOTE 17 Sale, Transfer and Servicing of Financial Assets and Extinguishments of Liabilities

B. Transfer and Servicing of Financial Assets - NOT APPLICABLE

C. Wash Sales - NOT APPLICABLE

NOTE 18 Gain or Loss to the Reporting Entity from Uninsured Plans and the Uninsured Portion of Partially Insured Plans

A. ASO Plans:

The gain from operations from Administrative Services Only (ASO) uninsured plans and the uninsured portion of partially insured plans was as follows during 2024:

	ASO Uninsured Plans	Uninsured Portion of Partially Insured Plans	Total ASO
a. Net reimbursement for administrative Expenses (including administrative fees) in excess of actual expenses			\$ -
b. Total net other income or expenses (including interest paid to or received from plans)			\$ -
c. Net gain or (loss) from operations (a+b)	\$ -	\$ -	\$ -
d. Total claim payment volume	\$ 499,794,326		\$ 499,794,326

All amounts received by the Plan have been paid out to the required parties. No administrative fees have been collected on these amounts and no amounts have been retained as reimbursement for any administrative costs incurred by the Plan. The total claim payment volume above reflects the total pass through amounts relating to the Plan through the reporting period. This total includes \$438,760,316 HRA, \$53,185,117 SNAF, and \$7,848,893 GME. No net gain or loss as it relates to funds received for ASO uninsured plans has been recorded as of September 30, 2024.

B. ASC Plans - NOT APPLICABLE

C. Medicare or Similarly Structured Cost Based Reimbursement Contract - NOT APPLICABLE

NOTE 19 Direct Premium Written/Produced by Managing General Agents/Third Party Administrators

No significant changes.

NOTE 20 Fair Value Measurements

A.

(1) Fair Value Measurements at Reporting Date

Description for each class of asset or liability	(Level 1)	(Level 2)	(Level 3)	Net Asset Value (NAV)	Total
a. Assets at fair value					
Common Stock	\$ 157,824,961	\$ -	\$ -	\$ -	\$ 157,824,961
Total assets at fair value/NAV	\$ 157,824,961	\$ -	\$ -	\$ -	\$ 157,824,961

Description for each class of asset or liability	(Level 1)	(Level 2)	(Level 3)	Net Asset Value (NAV)	Total
b. Liabilities at fair value					
Total liabilities at fair value	\$ -	\$ -	\$ -	\$ -	\$ -

(2) Fair Value Measurements in (Level 3) of the Fair Value hierarchy - NOT APPLICABLE

B. Fair Value Reporting under SSAP 100 and Other Accounting Pronouncements - NOT APPLICABLE

C. Fair Value Level - NOT APPLICABLE

NOTES TO FINANCIAL STATEMENTS

D. Not Practicable to Estimate Fair Value - NOT APPLICABLE

E. NAV Practical Expedient Investments - NOT APPLICABLE

NOTE 21 Other Items

No significant changes.

NOTE 22 Events Subsequent

Subsequent events have been considered through November 15, 2024 for these statutory financial statements which are to be issued on November 15, 2024.

NOTE 23 Reinsurance

No significant changes.

NOTE 24 Retrospectively Rated Contracts & Contracts Subject to Redetermination

E. Risk Sharing Provisions of the Affordable Care Act - NOT APPLICABLE

NOTE 25 Change in Incurred Claims and Claim Adjustment Expenses

Adjustments to previously rendered claims reserve estimates are reflected in the statement of operations in the period in which the estimates are revised. Such reserve adjustments consist of restatements of claim estimates and release of any margin associated with these estimates. Reserve adjustments have decreased by \$8,140,000 from \$95,602,000 in 2023 to \$87,462,000 in 2024.

NOTE 26 Intercompany Pooling Arrangements

No significant changes.

NOTE 27 Structured Settlements

No significant changes.

NOTE 28 Health Care Receivables

No significant changes.

NOTE 29 Participating Policies

No significant changes.

NOTE 30 Premium Deficiency Reserves

No significant changes.

NOTE 31 Anticipated Salvage and Subrogation

No significant changes.

GENERAL INTERROGATORIES

PART 1 - COMMON INTERROGATORIES

GENERAL

- 1.1 Did the reporting entity experience any material transactions requiring the filing of Disclosure of Material Transactions with the State of Domicile, as required by the Model Act? Yes [] No [X]
- 1.2 If yes, has the report been filed with the domiciliary state? Yes [] No []
- 2.1 Has any change been made during the year of this statement in the charter, by-laws, articles of incorporation, or deed of settlement of the reporting entity? Yes [] No [X]
- 2.2 If yes, date of change:
- 3.1 Is the reporting entity a member of an Insurance Holding Company System consisting of two or more affiliated persons, one or more of which is an insurer? Yes [X] No []
If yes, complete Schedule Y, Parts 1 and 1A.
- 3.2 Have there been any substantial changes in the organizational chart since the prior quarter end? Yes [] No [X]
- 3.3 If the response to 3.2 is yes, provide a brief description of those changes.
.....
- 3.4 Is the reporting entity publicly traded or a member of a publicly traded group? Yes [] No [X]
- 3.5 If the response to 3.4 is yes, provide the CIK (Central Index Key) code issued by the SEC for the entity/group.
- 4.1 Has the reporting entity been a party to a merger or consolidation during the period covered by this statement? Yes [] No [X]
- 4.2 If yes, provide the name of the entity, NAIC Company Code, and state of domicile (use two letter state abbreviation) for any entity that has ceased to exist as a result of the merger or consolidation.

1	2	3
Name of Entity	NAIC Company Code	State of Domicile

5. If the reporting entity is subject to a management agreement, including third-party administrator(s), managing general agent(s), attorney-in-fact, or similar agreement, have there been any significant changes regarding the terms of the agreement or principals involved? Yes [] No [X] N/A []
If yes, attach an explanation.
.....
- 6.1 State as of what date the latest financial examination of the reporting entity was made or is being made. 12/31/2022
- 6.2 State the as of date that the latest financial examination report became available from either the state of domicile or the reporting entity. This date should be the date of the examined balance sheet and not the date the report was completed or released. 12/31/2022
- 6.3 State as of what date the latest financial examination report became available to other states or the public from either the state of domicile or the reporting entity. This is the release date or completion date of the examination report and not the date of the examination (balance sheet date). 02/12/2024
- 6.4 By what department or departments?
State of Michigan Department of Insurance and Financial Services
- 6.5 Have all financial statement adjustments within the latest financial examination report been accounted for in a subsequent financial statement filed with Departments? Yes [] No [] N/A [X]
- 6.6 Have all of the recommendations within the latest financial examination report been complied with? Yes [X] No [] N/A []
- 7.1 Has this reporting entity had any Certificates of Authority, licenses or registrations (including corporate registration, if applicable) suspended or revoked by any governmental entity during the reporting period? Yes [] No [X]
- 7.2 If yes, give full information:
.....
- 8.1 Is the company a subsidiary of a bank holding company regulated by the Federal Reserve Board? Yes [] No [X]
- 8.2 If response to 8.1 is yes, please identify the name of the bank holding company.
.....
- 8.3 Is the company affiliated with one or more banks, thrifts or securities firms? Yes [] No [X]
- 8.4 If response to 8.3 is yes, please provide below the names and location (city and state of the main office) of any affiliates regulated by a federal regulatory services agency [i.e. the Federal Reserve Board (FRB), the Office of the Comptroller of the Currency (OCC), the Federal Deposit Insurance Corporation (FDIC) and the Securities Exchange Commission (SEC)] and identify the affiliate's primary federal regulator.

1	2	3	4	5	6
Affiliate Name	Location (City, State)	FRB	OCC	FDIC	SEC

GENERAL INTERROGATORIES

- 9.1 Are the senior officers (principal executive officer, principal financial officer, principal accounting officer or controller, or persons performing similar functions) of the reporting entity subject to a code of ethics, which includes the following standards? Yes [] No []
- (a) Honest and ethical conduct, including the ethical handling of actual or apparent conflicts of interest between personal and professional relationships;
- (b) Full, fair, accurate, timely and understandable disclosure in the periodic reports required to be filed by the reporting entity;
- (c) Compliance with applicable governmental laws, rules and regulations;
- (d) The prompt internal reporting of violations to an appropriate person or persons identified in the code; and
- (e) Accountability for adherence to the code.
- 9.11 If the response to 9.1 is No, please explain:
.....
- 9.2 Has the code of ethics for senior managers been amended? Yes [] No []
- 9.21 If the response to 9.2 is Yes, provide information related to amendment(s).
.....
- 9.3 Have any provisions of the code of ethics been waived for any of the specified officers? Yes [] No []
- 9.31 If the response to 9.3 is Yes, provide the nature of any waiver(s).
.....

FINANCIAL

- 10.1 Does the reporting entity report any amounts due from parent, subsidiaries or affiliates on Page 2 of this statement? Yes [] No []
- 10.2 If yes, indicate any amounts receivable from parent included in the Page 2 amount: \$ 0

INVESTMENT

- 11.1 Were any of the stocks, bonds, or other assets of the reporting entity loaned, placed under option agreement, or otherwise made available for use by another person? (Exclude securities under securities lending agreements.) Yes [] No []
- 11.2 If yes, give full and complete information relating thereto:
On Deposit with State of Michigan
12. Amount of real estate and mortgages held in other invested assets in Schedule BA: \$
13. Amount of real estate and mortgages held in short-term investments: \$
- 14.1 Does the reporting entity have any investments in parent, subsidiaries and affiliates? Yes [] No []
- 14.2 If yes, please complete the following:
- | | 1
Prior Year-End
Book/Adjusted
Carrying Value | 2
Current Quarter
Book/Adjusted
Carrying Value |
|---|--|---|
| 14.21 Bonds | \$ 0 | \$ |
| 14.22 Preferred Stock | \$ 0 | \$ |
| 14.23 Common Stock | \$ 0 | \$ |
| 14.24 Short-Term Investments | \$ 0 | \$ |
| 14.25 Mortgage Loans on Real Estate | \$ 0 | \$ |
| 14.26 All Other | \$ 0 | \$ |
| 14.27 Total Investment in Parent, Subsidiaries and Affiliates (Subtotal Lines 14.21 to 14.26) | \$ 0 | \$ 0 |
| 14.28 Total Investment in Parent included in Lines 14.21 to 14.26 above | \$ | \$ |
- 15.1 Has the reporting entity entered into any hedging transactions reported on Schedule DB? Yes [] No []
- 15.2 If yes, has a comprehensive description of the hedging program been made available to the domiciliary state? Yes [] No [] N/A []
If no, attach a description with this statement.
.....
16. For the reporting entity's security lending program, state the amount of the following as of the current statement date:
- 16.1 Total fair value of reinvested collateral assets reported on Schedule DL, Parts 1 and 2. \$ 0
- 16.2 Total book/adjusted carrying value of reinvested collateral assets reported on Schedule DL, Parts 1 and 2 \$ 0
- 16.3 Total payable for securities lending reported on the liability page. \$ 0

GENERAL INTERROGATORIES

17. Excluding items in Schedule E - Part 3 - Special Deposits, real estate, mortgage loans and investments held physically in the reporting entity's offices, vaults or safety deposit boxes, were all stocks, bonds and other securities, owned throughout the current year held pursuant to a custodial agreement with a qualified bank or trust company in accordance with Section 1, III - General Examination Considerations, F. Outsourcing of Critical Functions, Custodial or Safekeeping Agreements of the NAIC Financial Condition Examiners Handbook? Yes [] No []
- 17.1 For all agreements that comply with the requirements of the NAIC Financial Condition Examiners Handbook, complete the following:

1 Name of Custodian(s)	2 Custodian Address
Northern Trust	Chicago, IL

- 17.2 For all agreements that do not comply with the requirements of the NAIC Financial Condition Examiners Handbook, provide the name, location and a complete explanation:

1 Name(s)	2 Location(s)	3 Complete Explanation(s)

- 17.3 Have there been any changes, including name changes, in the custodian(s) identified in 17.1 during the current quarter? Yes [] No []

- 17.4 If yes, give full information relating thereto:

1 Old Custodian	2 New Custodian	3 Date of Change	4 Reason

- 17.5 Investment management – Identify all investment advisors, investment managers, broker/dealers, including individuals that have the authority to make investment decisions on behalf of the reporting entity. For assets that are managed internally by employees of the reporting entity, note as such. ["...that have access to the investment accounts"; "...handle securities"]

1 Name of Firm or Individual	2 Affiliation
SLC Management LLC	U.....

- 17.5097 For those firms/individuals listed in the table for Question 17.5, do any firms/individuals unaffiliated with the reporting entity (i.e. designated with a "U") manage more than 10% of the reporting entity's invested assets?..... Yes [] No []

- 17.5098 For firms/individuals unaffiliated with the reporting entity (i.e. designated with a "U") listed in the table for Question 17.5, does the total assets under management aggregate to more than 50% of the reporting entity's invested assets?..... Yes [] No []

- 17.6 For those firms or individuals listed in the table for 17.5 with an affiliation code of "A" (affiliated) or "U" (unaffiliated), provide the information for the table below.

1	2	3	4	5
Central Registration Depository Number	Name of Firm or Individual	Legal Entity Identifier (LEI)	Registered With	Investment Management Agreement (IMA) Filed
109684	SLC Management LLC	5493001YLOMBHWNPEN55	SEC	NO.....

- 18.1 Have all the filing requirements of the Purposes and Procedures Manual of the NAIC Investment Analysis Office been followed? Yes [] No []

- 18.2 If no, list exceptions:
.....

19. By self-designating 5GI securities, the reporting entity is certifying the following elements for each self-designated 5GI security:

- a. Documentation necessary to permit a full credit analysis of the security does not exist or an NAIC CRP credit rating for an FE or PL security is not available.
- b. Issuer or obligor is current on all contracted interest and principal payments.
- c. The insurer has an actual expectation of ultimate payment of all contracted interest and principal.

- Has the reporting entity self-designated 5GI securities? Yes [] No []

20. By self-designating PLGI securities, the reporting entity is certifying the following elements of each self-designated PLGI security:

- a. The security was purchased prior to January 1, 2018.
- b. The reporting entity is holding capital commensurate with the NAIC Designation reported for the security.
- c. The NAIC Designation was derived from the credit rating assigned by an NAIC CRP in its legal capacity as a NRSRO which is shown on a current private letter rating held by the insurer and available for examination by state insurance regulators.
- d. The reporting entity is not permitted to share this credit rating of the PL security with the SVO.

- Has the reporting entity self-designated PLGI securities? Yes [] No []

21. By assigning FE to a Schedule BA non-registered private fund, the reporting entity is certifying the following elements of each self-designated FE fund:

- a. The shares were purchased prior to January 1, 2019.
- b. The reporting entity is holding capital commensurate with the NAIC Designation reported for the security.
- c. The security had a public credit rating(s) with annual surveillance assigned by an NAIC CRP in its legal capacity as an NRSRO prior to January 1, 2019.
- d. The fund only or predominantly holds bonds in its portfolio.
- e. The current reported NAIC Designation was derived from the public credit rating(s) with annual surveillance assigned by an NAIC CRP in its legal capacity as an NRSRO.
- f. The public credit rating(s) with annual surveillance assigned by an NAIC CRP has not lapsed.

- Has the reporting entity assigned FE to Schedule BA non-registered private funds that complied with the above criteria? Yes [] No []

GENERAL INTERROGATORIES

PART 2 - HEALTH

1. Operating Percentages:
- 1.1 A&H loss percent94.1 %
 - 1.2 A&H cost containment percent 1.4 %
 - 1.3 A&H expense percent excluding cost containment expenses13.6 %
- 2.1 Do you act as a custodian for health savings accounts? Yes [] No [X]
- 2.2 If yes, please provide the amount of custodial funds held as of the reporting date \$.....
- 2.3 Do you act as an administrator for health savings accounts? Yes [] No [X]
- 2.4 If yes, please provide the balance of the funds administered as of the reporting date \$.....
3. Is the reporting entity licensed or chartered, registered, qualified, eligible or writing business in at least two states? Yes [] No [X]
- 3.1 If no, does the reporting entity assume reinsurance business that covers risks residing in at least one state other than the state of domicile of the reporting entity? Yes [] No [X]

SCHEDULE T - PREMIUMS AND OTHER CONSIDERATIONS

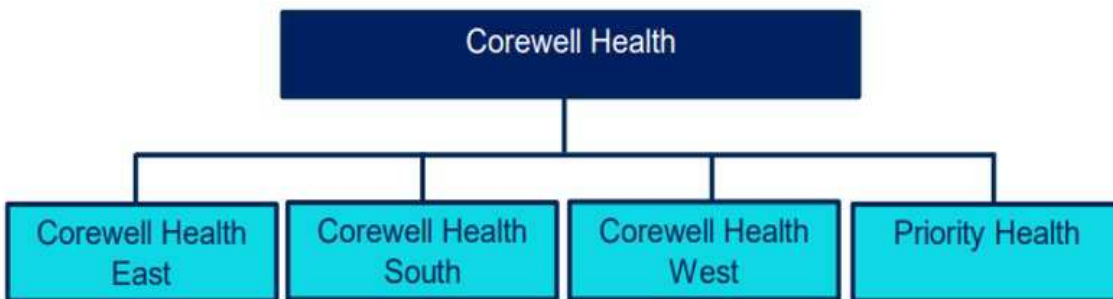
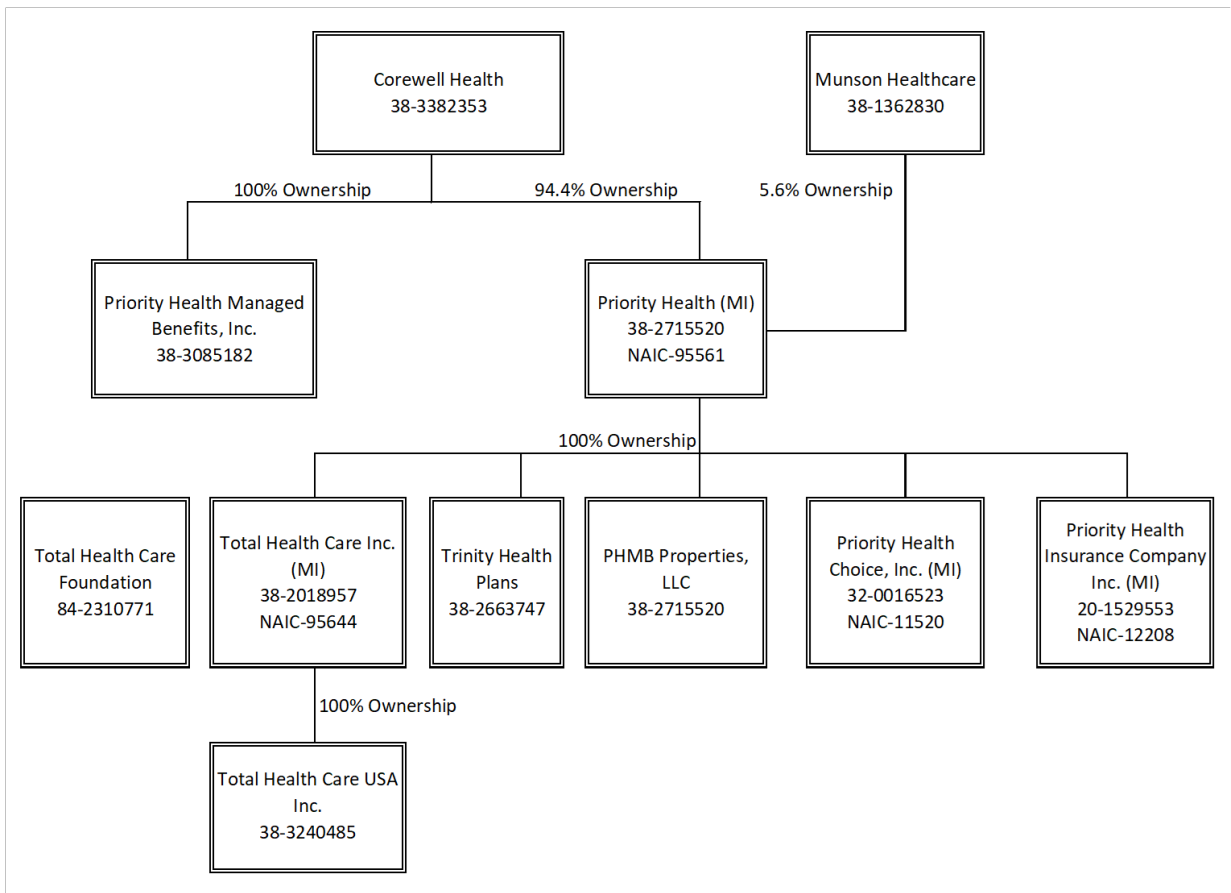
Current Year to Date - Allocated by States and Territories

States, etc.	1 Active Status (a)	Direct Business Only									
		2 Accident and Health Premiums	3 Medicare Title XVIII	4 Medicaid Title XIX	5 CHIP Title XXI	6 Federal Employees Health Benefits Program Premiums	7 Life and Annuity Premiums & Other Considerations	8 Property/Casualty Premiums	9 Total Columns 2 Through 8	10 Deposit-Type Contracts	
1. Alabama	AL	N								0	
2. Alaska	AK	N								0	
3. Arizona	AZ	N								0	
4. Arkansas	AR	N								0	
5. California	CA	N								0	
6. Colorado	CO	N								0	
7. Connecticut	CT	N								0	
8. Delaware	DE	N								0	
9. District of Columbia	DC	N								0	
10. Florida	FL	N								0	
11. Georgia	GA	N								0	
12. Hawaii	HI	N								0	
13. Idaho	ID	N								0	
14. Illinois	IL	N								0	
15. Indiana	IN	N								0	
16. Iowa	IA	N								0	
17. Kansas	KS	N								0	
18. Kentucky	KY	N								0	
19. Louisiana	LA	N								0	
20. Maine	ME	N								0	
21. Maryland	MD	N								0	
22. Massachusetts	MA	N								0	
23. Michigan	MI	L	163,520,993	695,303,912						858,824,905	
24. Minnesota	MN	N								0	
25. Mississippi	MS	N								0	
26. Missouri	MO	N								0	
27. Montana	MT	N								0	
28. Nebraska	NE	N								0	
29. Nevada	NV	N								0	
30. New Hampshire	NH	N								0	
31. New Jersey	NJ	N								0	
32. New Mexico	NM	N								0	
33. New York	NY	N								0	
34. North Carolina	NC	N								0	
35. North Dakota	ND	N								0	
36. Ohio	OH	N								0	
37. Oklahoma	OK	N								0	
38. Oregon	OR	N								0	
39. Pennsylvania	PA	N								0	
40. Rhode Island	RI	N								0	
41. South Carolina	SC	N								0	
42. South Dakota	SD	N								0	
43. Tennessee	TN	N								0	
44. Texas	TX	N								0	
45. Utah	UT	N								0	
46. Vermont	VT	N								0	
47. Virginia	VA	N								0	
48. Washington	WA	N								0	
49. West Virginia	WV	N								0	
50. Wisconsin	WI	N								0	
51. Wyoming	WY	N								0	
52. American Samoa	AS	N								0	
53. Guam	GU	N								0	
54. Puerto Rico	PR	N								0	
55. U.S. Virgin Islands	VI	N								0	
56. Northern Mariana Islands	MP	N								0	
57. Canada	CAN	N								0	
58. Aggregate Other Aliens	OT	XXX	0	0	0	0	0	0	0	0	0
59. Subtotal	XXX	0	163,520,993	695,303,912	0	0	0	0	858,824,905	0	0
60. Reporting Entity Contributions for Employee Benefit Plans	XXX									0	
61. Totals (Direct Business)	XXX	0	163,520,993	695,303,912	0	0	0	0	858,824,905	0	0
DETAILS OF WRITE-INS											
58001.	XXX										
58002.	XXX										
58003.	XXX										
58998. Summary of remaining write-ins for Line 58 from overflow page	XXX	0	0	0	0	0	0	0	0	0	0
58999. Totals (Lines 58001 through 58003 plus 58998)(Line 58 above)	XXX	0	0	0	0	0	0	0	0	0	0

(a) Active Status Counts:

- 1. L - Licensed or Chartered - Licensed insurance carrier or domiciled RRG..... 1
- 2. R - Registered - Non-domiciled RRGs..... 0
- 3. E - Eligible - Reporting entities eligible or approved to write surplus lines in the state. 0
- 4. Q - Qualified - Qualified or accredited reinsurer..... 0
- 5. N - None of the above - Not allowed to write business in the state..... 56

**SCHEDULE Y – INFORMATION CONCERNING ACTIVITIES OF
INSURER MEMBERS OF A HOLDING COMPANY GROUP
PART 1 – ORGANIZATIONAL CHART**



STATEMENT AS OF SEPTEMBER 30, 2024 OF THE Priority Health Choice, Inc.

SCHEDULE Y
PART 1A - DETAIL OF INSURANCE HOLDING COMPANY SYSTEM

1	2	3	4	5	6	7	8	9	10	11	12	13	14	15	16
Group Code	Group Name	NAIC Company Code	ID Number	Federal RSSD	CIK	Name of Securities Exchange if Publicly Traded (U.S. or International)	Names of Parent, Subsidiaries Or Affiliates	Domiciliary Location	Relationship to Reporting Entity	Directly Controlled by (Name of Entity/Person)	Type of Control (Ownership, Board, Management, Attorney-in-Fact, Influence, Other)	If Control is Ownership Provide Percentage	Ultimate Controlling Entity(ies)/Person(s)	Is an SCA Filing Required? (Yes/No)	*
. 3383 ...	Corewell Health Group	95661	38-2715520 ..	0	0	Priority Health MI..... UDP.....	Corewell Health	Ownership.....	94.400	Corewell Health NO.....	... 1
.....	0	0	Munson HealthCare	Ownership.....	5.600 NO.....	... 1
. 3383 ...	Corewell Health Group	11520	32-0016523 ..	0	0	Priority Health Choice, Inc. MI..... IA.....	Priority Health	Ownership.....	100.000	Corewell Health NO.....	... 0
. 3383 ...	Corewell Health Group	12208	20-1529553 ..	0	0	Priority Health Insurance Company MI..... IA.....	Priority Health	Ownership.....	100.000	Corewell Health NO.....	... 0
. 3383 ...	Corewell Health Group	95644	38-2018957 ..	0	0	Total Health Care Inc. MI..... IA.....	Priority Health	Ownership.....	100.000	Corewell Health NO.....	... 0
. 3383 ...	Corewell Health Group	38-3240485 ..	0	0	Total Health Care USA Inc. MI..... NIA.....	Total Health Care Inc.	Ownership.....	100.000	Corewell Health NO.....	... 0
.....	84-2310771 ..	0	0	Total Health Care Foundation MI..... NIA.....	Priority Health	Board of Directors.....	0.000	Corewell Health NO.....	... 0
. 3383 ...	Corewell Health Group	38-2715520 ..	0	0	PHMB Properties, LLC MI..... NIA.....	Priority Health	Ownership.....	100.000	Corewell Health NO.....	... 0
. 3383 ...	Corewell Health Group	38-2663747 ..	0	0	Trinity Health Plans MI..... NIA.....	Priority Health	Ownership.....	100.000	Corewell Health NO.....	... 0
.....	38-3085182 ..	0	0	Priority Health Managed Benefits, Inc. MI..... NIA.....	Corewell Health	Ownership.....	100.000	Corewell Health NO.....	... 0
.....	0	0	Corewell Health Grand Rapids MI..... NIA.....	Corewell Health	Ownership.....	100.000	Corewell Health NO.....	... 0
.....	0	0	Corewell Health Big Rapids MI..... NIA.....	Corewell Health	Ownership.....	100.000	Corewell Health NO.....	... 0
.....	0	0	Corewell Health Reed City MI..... NIA.....	Corewell Health	Ownership.....	100.000	Corewell Health NO.....	... 0
.....	0	0	Corewell Health Gerber MI..... NIA.....	Corewell Health	Ownership.....	100.000	Corewell Health NO.....	... 0
.....	0	0	Corewell Health Ludington MI..... NIA.....	Corewell Health	Ownership.....	100.000	Corewell Health NO.....	... 0
.....	0	0	Corewell Health Pennock MI..... NIA.....	Corewell Health	Ownership.....	100.000	Corewell Health NO.....	... 0
.....	0	0	Corewell Health Greenville MI..... NIA.....	Corewell Health	Ownership.....	100.000	Corewell Health NO.....	... 0
.....	0	0	Corewell Health Kelsey MI..... NIA.....	Corewell Health	Ownership.....	100.000	Corewell Health NO.....	... 0
.....	0	0	Corewell Health Zeeland MI..... NIA.....	Corewell Health	Ownership.....	100.000	Corewell Health NO.....	... 0
.....	0	0	Corewell Health West - Continuing Care MI..... NIA.....	Corewell Health	Ownership.....	100.000	Corewell Health NO.....	... 0
.....	0	0	Corewell Health Medical Group West MI..... NIA.....	Corewell Health	Ownership.....	100.000	Corewell Health NO.....	... 0
.....	0	0	Corewell Health South MI..... NIA.....	Corewell Health	Ownership.....	100.000	Corewell Health NO.....	... 0
.....	0	0	Corewell Health East MI..... NIA.....	Corewell Health	Ownership.....	100.000	Corewell Health NO.....	... 0

Asterisk	Explanation
1	Corewell Health (EIN 38-3382353), Class A Shareholder - 94.4%; Munson Healthcare (EIN 38-1362830), Class B Shareholder - 5.6%

SUPPLEMENTAL EXHIBITS AND SCHEDULES INTERROGATORIES

The following supplemental reports are required to be filed as part of your statement filing. However, in the event that your company does not transact the type of business for which the special report must be filed, your response of NO to the specific interrogatory will be accepted in lieu of filing a "NONE" report and a bar code will be printed below. If the supplement is required of your company but is not being filed for whatever reason enter SEE EXPLANATION and provide an explanation following the interrogatory questions.

	Response
1. Will the Medicare Part D Coverage Supplement be filed with the state of domicile and the NAIC with this statement?	NO

AUGUST FILING

2. Will the regulator-only (non-public) Communication of Internal Control Related Matters Noted in Audit be filed with the state of domicile and electronically with the NAIC (as a regulator-only non-public document) by August 1? The response for 1st and 3rd quarters should be N/A. A NO response resulting with a bar code is only appropriate in the 2nd quarter.	N/A
--	-----

Explanation:

1.

Bar Code:

1. Medicare Part D Coverage Supplement [Document Identifier 365]



OVERFLOW PAGE FOR WRITE-INS

NONE

STATEMENT AS OF SEPTEMBER 30, 2024 OF THE Priority Health Choice, Inc.

SCHEDULE A - VERIFICATION

Real Estate

	1 Year to Date	2 Prior Year Ended December 31
1. Book/adjusted carrying value, December 31 of prior year		
2. Cost of acquired:		
2.1 Actual cost at time of acquisition		
2.2 Additional investment made after acquisition		
3. Current year change in encumbrances		
4. Total gain (loss) on disposals		
5. Deduct amounts received on disposals		
6. Total foreign exchange change in book/adjusted carrying value		
7. Deduct current year's other than temporary impairment recognized		
8. Deduct current year's depreciation		
9. Book/adjusted carrying value at the end of current period (Lines 1+2+3+4-5+6-7-8)		
10. Deduct total nonadmitted amounts		
11. Statement value at end of current period (Line 9 minus Line 10)		

NONE

SCHEDULE B - VERIFICATION

Mortgage Loans

	1 Year to Date	2 Prior Year Ended December 31
1. Book value/recorded investment excluding accrued interest, December 31 of prior year		
2. Cost of acquired:		
2.1 Actual cost at time of acquisition		
2.2 Additional investment made after acquisition		
3. Capitalized deferred interest and other		
4. Accrual of discount		
5. Unrealized valuation increase/(decrease)		
6. Total gain (loss) on disposals		
7. Deduct amounts received on disposals		
8. Deduct amortization of premium and mortgage interest paid and commitment fees		
9. Total foreign exchange change in book value/recorded investment excluding accrued interest		
10. Deduct current year's other than temporary impairment recognized		
11. Book value/recorded investment excluding accrued interest at end of current period (Lines 1+2+3+4+5+6-7-8+9-10)		
12. Total valuation allowance		
13. Subtotal (Line 11 plus Line 12)		
14. Deduct total nonadmitted amounts		
15. Statement value at end of current period (Line 13 minus Line 14)		

NONE

SCHEDULE BA - VERIFICATION

Other Long-Term Invested Assets

	1 Year to Date	2 Prior Year Ended December 31
1. Book/adjusted carrying value, December 31 of prior year		
2. Cost of acquired:		
2.1 Actual cost at time of acquisition		
2.2 Additional investment made after acquisition		
3. Capitalized deferred interest and other		
4. Accrual of discount		
5. Unrealized valuation increase/(decrease)		
6. Total gain (loss) on disposals		
7. Deduct amounts received on disposals		
8. Deduct amortization of premium and depreciation		
9. Total foreign exchange change in book/adjusted carrying value		
10. Deduct current year's other than temporary impairment recognized		
11. Book/adjusted carrying value at end of current period (Lines 1+2+3+4+5+6-7-8+9-10)		
12. Deduct total nonadmitted amounts		
13. Statement value at end of current period (Line 11 minus Line 12)		

NONE

SCHEDULE D - VERIFICATION

Bonds and Stocks

	1 Year to Date	2 Prior Year Ended December 31
1. Book/adjusted carrying value of bonds and stocks, December 31 of prior year	147,402,165	124,874,922
2. Cost of bonds and stocks acquired	6,779,323	17,571,148
3. Accrual of discount	18,183	23,340
4. Unrealized valuation increase/(decrease)	6,572,192	8,970,583
5. Total gain (loss) on disposals	1,174,690	(1,010,184)
6. Deduct consideration for bonds and stocks disposed of	3,000,000	3,027,644
7. Deduct amortization of premium	0	0
8. Total foreign exchange change in book/adjusted carrying value	0	0
9. Deduct current year's other than temporary impairment recognized	0	0
10. Total investment income recognized as a result of prepayment penalties and/or acceleration fees	0	0
11. Book/adjusted carrying value at end of current period (Lines 1+2+3+4+5-6-7+8-9+10)	158,946,553	147,402,165
12. Deduct total nonadmitted amounts	0	0
13. Statement value at end of current period (Line 11 minus Line 12)	158,946,553	147,402,165

STATEMENT AS OF SEPTEMBER 30, 2024 OF THE Priority Health Choice, Inc.

SCHEDULE D - PART 1B

Showing the Acquisitions, Dispositions and Non-Trading Activity
During the Current Quarter for all Bonds and Preferred Stock by NAIC Designation

NAIC Designation	1 Book/Adjusted Carrying Value Beginning of Current Quarter	2 Acquisitions During Current Quarter	3 Dispositions During Current Quarter	4 Non-Trading Activity During Current Quarter	5 Book/Adjusted Carrying Value End of First Quarter	6 Book/Adjusted Carrying Value End of Second Quarter	7 Book/Adjusted Carrying Value End of Third Quarter	8 Book/Adjusted Carrying Value December 31 Prior Year
BONDS								
1. NAIC 1 (a)	55,205,778	15,076,059	11,999,000	341,836	56,542,420	55,205,778	58,624,673	54,586,106
2. NAIC 2 (a)	9,324,237	3,867,933	5,500,000	51,882	8,286,251	9,324,237	7,744,052	8,090,339
3. NAIC 3 (a)	0	0	0	0	0	0	0	0
4. NAIC 4 (a)	0	0	0	0	0	0	0	0
5. NAIC 5 (a)	0	0	0	0	0	0	0	0
6. NAIC 6 (a)	0	0	0	0	0	0	0	0
7. Total Bonds	64,530,015	18,943,992	17,499,000	393,718	64,828,671	64,530,015	66,368,725	62,676,445
PREFERRED STOCK								
8. NAIC 1	0	0	0	0	0	0	0	0
9. NAIC 2	0	0	0	0	0	0	0	0
10. NAIC 3	0	0	0	0	0	0	0	0
11. NAIC 4	0	0	0	0	0	0	0	0
12. NAIC 5	0	0	0	0	0	0	0	0
13. NAIC 6	0	0	0	0	0	0	0	0
14. Total Preferred Stock	0	0	0	0	0	0	0	0
15. Total Bonds and Preferred Stock	64,530,015	18,943,992	17,499,000	393,718	64,828,671	64,530,015	66,368,725	62,676,445

(a) Book/Adjusted Carrying Value column for the end of the current reporting period includes the following amount of short-term and cash equivalent bonds by NAIC designation:

NAIC 1 \$ 57,503,077 ; NAIC 2 \$ 7,744,052 ; NAIC 3 \$ 0 ; NAIC 4 \$ 0 ; NAIC 5 \$ 0 ; NAIC 6 \$ 0

S102

SCHEDULE DA - PART 1

Short-Term Investments

	1	2	3	4	5
	Book/Adjusted Carrying Value	Par Value	Actual Cost	Interest Collected Year-to-Date	Paid for Accrued Interest Year-to-Date
7709999999 Totals	65,247,129	xxx	64,510,878	446,006	62,786

SCHEDULE DA - VERIFICATION

Short-Term Investments

	1	2
	Year To Date	Prior Year Ended December 31
1. Book/adjusted carrying value, December 31 of prior year	61,573,032	56,659,456
2. Cost of short-term investments acquired	51,478,352	61,946,268
3. Accrual of discount	1,266,789	1,073,778
4. Unrealized valuation increase/(decrease)	0	0
5. Total gain (loss) on disposals	0	0
6. Deduct consideration received on disposals	49,069,000	58,139,000
7. Deduct amortization of premium	2,044	14,909
8. Total foreign exchange change in book/adjusted carrying value	0	0
9. Deduct current year's other than temporary impairment recognized	0	0
10. Book/adjusted carrying value at end of current period (Lines 1+2+3+4+5-6-7+8-9)	65,247,129	61,525,593
11. Deduct total nonadmitted amounts	0	0
12. Statement value at end of current period (Line 10 minus Line 11)	65,247,129	61,525,593

Schedule DB - Part A - Verification - Options, Caps, Floors, Collars, Swaps and Forwards

N O N E

Schedule DB - Part B - Verification - Futures Contracts

N O N E

Schedule DB - Part C - Section 1 - Replication (Synthetic Asset) Transactions (RSATs) Open

N O N E

Schedule DB-Part C-Section 2-Reconciliation of Replication (Synthetic Asset) Transactions Open

N O N E

Schedule DB - Verification - Book/Adjusted Carrying Value, Fair Value and Potential Exposure of
Derivatives

N O N E

SCHEDULE E - PART 2 - VERIFICATION

(Cash Equivalents)

	1	2
	Year To Date	Prior Year Ended December 31
1. Book/adjusted carrying value, December 31 of prior year	142,150,488	156,262,831
2. Cost of cash equivalents acquired	1,445,469,671	1,186,690,062
3. Accrual of discount	0	0
4. Unrealized valuation increase/(decrease)	0	0
5. Total gain (loss) on disposals	0	0
6. Deduct consideration received on disposals	1,428,828,094	1,200,802,405
7. Deduct amortization of premium	0	0
8. Total foreign exchange change in book/adjusted carrying value	0	0
9. Deduct current year's other than temporary impairment recognized	0	0
10. Book/adjusted carrying value at end of current period (Lines 1+2+3+4+5-6-7+8-9)	158,792,065	142,150,488
11. Deduct total nonadmitted amounts	0	0
12. Statement value at end of current period (Line 10 minus Line 11)	158,792,065	142,150,488

Schedule A - Part 2 - Real Estate Acquired and Additions Made

N O N E

Schedule A - Part 3 - Real Estate Disposed

N O N E

Schedule B - Part 2 - Mortgage Loans Acquired and Additions Made

N O N E

Schedule B - Part 3 - Mortgage Loans Disposed, Transferred or Repaid

N O N E

Schedule BA - Part 2 - Other Long-Term Invested Assets Acquired and Additions Made

N O N E

Schedule BA - Part 3 - Other Long-Term Invested Assets Disposed, Transferred or Repaid

N O N E

STATEMENT AS OF SEPTEMBER 30, 2024 OF THE Priority Health Choice, Inc.

SCHEDULE D - PART 3

Show All Long-Term Bonds and Stock Acquired During the Current Quarter

1	2	3	4	5	6	7	8	9	10
CUSIP Identification	Description	Foreign	Date Acquired	Name of Vendor	Number of Shares of Stock	Actual Cost	Par Value	Paid for Accrued Interest and Dividends	NAIC Designation, NAIC Designation Modifier and SVO Administrative Symbol
2509999997. Total - Bonds - Part 3						0	0	0	XXX
2509999998. Total - Bonds - Part 5						XXX	XXX	XXX	XXX
2509999999. Total - Bonds						0	0	0	XXX
4509999997. Total - Preferred Stocks - Part 3						0	XXX	0	XXX
4509999998. Total - Preferred Stocks - Part 5						XXX	XXX	XXX	XXX
4509999999. Total - Preferred Stocks						0	XXX	0	XXX
057071-85-4	BAIRD AGGREGATE BD FD		09/25/2024	DIVIDEND REINVESTMENT	50,009.330	497,308		0	
315911-75-0	FIDELITY 500 INDX FD		07/08/2024	DIVIDEND REINVESTMENT	241.680	46,724		0	
693390-55-1	PIMCO TOTAL RET II-INST		09/30/2024	DIVIDEND REINVESTMENT	55,173.890	461,715		0	
72201F-49-0	PIMCO INC FD-INS		09/30/2024	DIVIDEND REINVESTMENT	26,349.920	282,470		0	
922908-87-6	VANGUARD SMALL CAP IX FD		09/30/2024	DIVIDEND REINVESTMENT	88.380	10,037		0	
5329999999. Subtotal - Common Stocks - Mutual Funds - Designations Not Assigned by the SVO						1,298,254	XXX	0	XXX
5989999997. Total - Common Stocks - Part 3						1,298,254	XXX	0	XXX
5989999998. Total - Common Stocks - Part 5						XXX	XXX	XXX	XXX
5989999999. Total - Common Stocks						1,298,254	XXX	0	XXX
5999999999. Total - Preferred and Common Stocks						1,298,254	XXX	0	XXX
6009999999 - Totals						1,298,254	XXX	0	XXX

Schedule D - Part 4 - Long-Term Bonds and Stocks Sold, Redeemed or Otherwise Disposed Of

N O N E

Schedule DB - Part A - Section 1 - Options, Caps, Floors, Collars, Swaps and Forwards Open

N O N E

Schedule DB - Part B - Section 1 - Futures Contracts Open

N O N E

Schedule DB - Part B - Section 1B - Brokers with whom cash deposits have been made

N O N E

Schedule DB - Part D - Section 1 - Counterparty Exposure for Derivative Instruments Open

N O N E

Schedule DB - Part D-Section 2 - Collateral for Derivative Instruments Open - Pledged By

N O N E

Schedule DB - Part D-Section 2 - Collateral for Derivative Instruments Open - Pledged To

N O N E

Schedule DB - Part E - Derivatives Hedging Variable Annuity Guarantees

N O N E

Schedule DL - Part 1 - Reinvested Collateral Assets Owned

N O N E

Schedule DL - Part 2 - Reinvested Collateral Assets Owned

N O N E

STATEMENT AS OF SEPTEMBER 30, 2024 OF THE Priority Health Choice, Inc.

SCHEDULE E - PART 2 - CASH EQUIVALENTS

Show Investments Owned End of Current Quarter

1	2	3	4	5	6	7	8	9
CUSIP	Description	Code	Date Acquired	Rate of Interest	Maturity Date	Book/Adjusted Carrying Value	Amount of Interest Due and Accrued	Amount Received During Year
0109999999	Total - U.S. Government Bonds					0	0	0
0309999999	Total - All Other Government Bonds					0	0	0
0509999999	Total - U.S. States, Territories and Possessions Bonds					0	0	0
0709999999	Total - U.S. Political Subdivisions Bonds					0	0	0
0909999999	Total - U.S. Special Revenues Bonds					0	0	0
1109999999	Total - Industrial and Miscellaneous (Unaffiliated) Bonds					0	0	0
1309999999	Total - Hybrid Securities					0	0	0
1509999999	Total - Parent, Subsidiaries and Affiliates Bonds					0	0	0
1909999999	Subtotal - Unaffiliated Bank Loans					0	0	0
2419999999	Total - Issuer Obligations					0	0	0
2429999999	Total - Residential Mortgage-Backed Securities					0	0	0
2439999999	Total - Commercial Mortgage-Backed Securities					0	0	0
2449999999	Total - Other Loan-Backed and Structured Securities					0	0	0
2459999999	Total - SVO Identified Funds					0	0	0
2469999999	Total - Affiliated Bank Loans					0	0	0
2479999999	Total - Unaffiliated Bank Loans					0	0	0
2509999999	Total Bonds					0	0	0
09248U-71-8	BLACKROCK T-FD INSTL #60		09/30/2024	4.832		158,671,456	0	9,988,252
665279-87-3	MFB NTHN INSTL FDS TREAS-PREM CL		09/17/2024	4.780		120,609	0	61,452
8209999999	Subtotal - Exempt Money Market Mutual Funds - as Identified by the SVO					158,792,065	0	10,049,704
8609999999	Total Cash Equivalents					158,792,065	0	10,049,704