



QUARTERLY STATEMENT
AS OF SEPTEMBER 30, 2025
OF THE CONDITION AND AFFAIRS OF THE
CCA HEALTH MICHIGAN, INC

NAIC Group Code 4999,..... 4999..... NAIC Company Code.....16542..... Employer's ID Number.... 81-4977640.....
(Current) (Prior)

Organized under the Laws of MI State of Domicile or Port of Entry..... MI.....
Country of Domicile US.....
Licensed as business type:..... HEALTH MAINTENANCE ORGANIZATION..... Is HMO Federally Qualified?..... YES.....
Incorporated/Organized 01/13/2017..... Commenced Business 03/10/2019.....
Statutory Home Office 30 Winter Street..... Boston, MA, US 02108.....
Main Administrative Office 30 Winter Street.....
Boston, MA, US 02108..... 617-426-0600.....
..... *(Telephone Number)*
Mail Address 30 Winter Street..... Boston, MA, US 02108.....
Primary Location of Books and
Records 30 Winter Street.....
Boston, MA, US 02108..... 617-426-0600.....
..... *(Telephone Number)*
Internet Website Address <https://www.commonwealthcarealliance.org/mi>.....
Statutory Statement Contact Don Spurlin..... 410-562-2194.....
..... *(Telephone Number)*
DSpurlin@commonwealthcare.org.....
..... *(E-Mail Address)* *(Fax Number)*

OFFICERS

Donald Stiffler, President..... Angela Neal#, Secretary.....
Matthew Peary, Treasurer.....

DIRECTORS OR TRUSTEES

Donald Stiffler..... Gowri Nagaraj#.....
Corey McCarty#.....

State of
County of SS

The officers of this reporting entity being duly sworn, each depose and say that they are the described officers of said reporting entity, and that on the reporting period stated above, all of the herein described assets were the absolute property of the said reporting entity, free and clear from any liens or claims thereon, except as herein stated, and that this statement, together with related exhibits, schedules and explanations therein contained, annexed or referred to, is a full and true statement of all the assets and liabilities and of the condition and affairs of the said reporting entity as of the reporting period stated above, and of its income and deductions therefrom for the period ended, and have been completed in accordance with the NAIC Annual Statement Instructions and Accounting Practices and Procedures manual except to the extent that: (1) state law may differ; or, (2) that state rules or regulations require differences in reporting not related to accounting practices and procedures, according to the best of their information, knowledge and belief, respectively. Furthermore, the scope of this attestation by the described officers also includes the related corresponding electronic filing with the NAIC, when required, that is an exact copy (except for formatting differences due to electronic filing) of the enclosed statement. The electronic filing may be requested by various regulators in lieu of or in addition to the enclosed statement.

x	x	x
Donald Stiffler President	Matthew Peary Treasurer	Angela Neal # Secretary

Subscribed and sworn to before me
this _____ day of
_____, 2025

- a. Is this an original filing? Yes
b. If no:
1. State the amendment number: _____
2. Date filed: _____
3. Number of pages attached: _____

x _____

ASSETS

	Current Statement Date			4 December 31 Prior Year Net Admitted Assets
	1 Assets	2 Nonadmitted Assets	3 Net Admitted Assets (Cols. 1 - 2)	
1. Bonds.....	852,931		852,931	2,959,828
2. Stocks:				
2.1 Preferred stocks.....				
2.2 Common stocks.....				
3. Mortgage loans on real estate:				
3.1 First liens.....				
3.2 Other than first liens.....				
4. Real estate:				
4.1 Properties occupied by the company (less \$..... encumbrances)				
4.2 Properties held for the production of income (less \$..... encumbrances)				
4.3 Properties held for sale (less \$..... encumbrances)				
5. Cash (\$.....1,564,645), cash equivalents (\$.....4,230,222) and short-term investments (\$.....)	5,794,866		5,794,866	8,808,082
6. Contract loans (including \$..... premium notes)				
7. Derivatives.....				
8. Other invested assets.....				
9. Receivables for securities.....				
10. Securities lending reinvested collateral assets.....				
11. Aggregate write-ins for invested assets.....				
12. Subtotals, cash and invested assets (Lines 1 to 11)	6,647,797		6,647,797	11,767,910
13. Title plants less \$..... charged off (for Title insurers only)				
14. Investment income due and accrued.....	23,462		23,462	21,852
15. Premiums and considerations:				
15.1 Uncollected premiums and agents' balances in the course of collection				
15.2 Deferred premiums, agents' balances and installments booked but deferred and not yet due (including \$..... earned but unbilled premiums)				
15.3 Accrued retrospective premiums (\$.....26,398) and contracts subject to redetermination (\$.....137,431)	163,830		163,830	163,830
16. Reinsurance:				
16.1 Amounts recoverable from reinsurers.....	227		227	531,308
16.2 Funds held by or deposited with reinsured companies.....				
16.3 Other amounts receivable under reinsurance contracts.....				
17. Amounts receivable relating to uninsured plans.....	231,360		231,360	231,360
18.1 Current federal and foreign income tax recoverable and interest thereon.....				
18.2 Net deferred tax asset.....				
19. Guaranty funds receivable or on deposit.....				
20. Electronic data processing equipment and software.....				
21. Furniture and equipment, including health care delivery assets (\$.....)				
22. Net adjustment in assets and liabilities due to foreign exchange rates.....				
23. Receivables from parent, subsidiaries and affiliates.....	483,023	483,023		
24. Health care (\$.....) and other amounts receivable.....	8,492	8,492		310,709
25. Aggregate write-ins for other-than-invested assets.....	21,073	21,073		
26. Total assets excluding Separate Accounts, Segregated Accounts and Protected Cell Accounts (Lines 12 to 25)	7,579,264	512,588	7,066,676	13,026,968
27. From Separate Accounts, Segregated Accounts and Protected Cell Accounts.....				
28. Total (Lines 26 and 27)	7,579,264	512,588	7,066,676	13,026,968
Details of Write-Ins				
1101.....				
1102.....				
1103.....				
1198. Summary of remaining write-ins for Line 11 from overflow page.....				
1199. Totals (Lines 1101 through 1103 plus 1198) (Line 11 above)				
2501. Miscellaneous receivables.....	21,073	21,073		
2502.....				
2503.....				
2598. Summary of remaining write-ins for Line 25 from overflow page.....				
2599. Totals (Lines 2501 through 2503 plus 2598) (Line 25 above)	21,073	21,073		

LIABILITIES, CAPITAL AND SURPLUS

	Current Period			Prior Year
	1 Covered	2 Uncovered	3 Total	4 Total
1. Claims unpaid (less \$..... reinsurance ceded).....	462,303		462,303	2,426,657
2. Accrued medical incentive pool and bonus amounts.....				
3. Unpaid claims adjustment expenses.....	10,507		10,507	56,389
4. Aggregate health policy reserves, including the liability of \$..... for medical loss ratio rebate per the Public Health Service Act.....				
5. Aggregate life policy reserves.....				
6. Property/casualty unearned premium reserve.....				
7. Aggregate health claim reserves.....				
8. Premiums received in advance.....				
9. General expenses due or accrued.....	163,333		163,333	211,949
10.1 Current federal and foreign income tax payable and interest thereon (including \$..... on realized gains (losses)).....				
10.2 Net deferred tax liability.....				
11. Ceded reinsurance premiums payable.....				
12. Amounts withheld or retained for the account of others.....	9,087		9,087	12,124
13. Remittances and items not allocated.....				
14. Borrowed money (including \$..... current) and interest thereon \$..... (including \$..... current).....				
15. Amounts due to parent, subsidiaries and affiliates.....	31,269		31,269	3,226,422
16. Derivatives.....				
17. Payable for securities.....				
18. Payable for securities lending.....				
19. Funds held under reinsurance treaties (with \$..... authorized reinsurers, \$..... unauthorized reinsurers and \$..... certified reinsurers).....				
20. Reinsurance in unauthorized and certified (\$.....) companies.....				
21. Net adjustments in assets and liabilities due to foreign exchange rates.....				
22. Liability for amounts held under uninsured plans.....	433,530		433,530	433,530
23. Aggregate write-ins for other liabilities (including \$..... current).....				130,204
24. Total liabilities (Lines 1 to 23).....	1,110,029		1,110,029	6,497,275
25. Aggregate write-ins for special surplus funds.....	XXX	XXX		
26. Common capital stock.....	XXX	XXX	12,380,000	12,380,000
27. Preferred capital stock.....	XXX	XXX		
28. Gross paid in and contributed surplus.....	XXX	XXX	28,206,848	28,206,848
29. Surplus notes.....	XXX	XXX		
30. Aggregate write-ins for other-than-special surplus funds.....	XXX	XXX		
31. Unassigned funds (surplus).....	XXX	XXX	(34,630,202)	(34,057,156)
32. Less treasury stock, at cost:				
32.1 shares common (value included in Line 26 \$.....)	XXX	XXX		
32.2 shares preferred (value included in Line 27 \$.....)	XXX	XXX		
33. Total capital and surplus (Lines 25 to 31 minus Line 32).....	XXX	XXX	5,956,647	6,529,692
34. Total liabilities, capital and surplus (Lines 24 and 33).....	XXX	XXX	7,066,676	13,026,967
Details of Write-Ins				
2301. Premium Refund.....				130,204
2302.....				
2303.....				
2398. Summary of remaining write-ins for Line 23 from overflow page.....				
2399. Totals (Lines 2301 through 2303 plus 2398) (Line 23 above).....				130,204
2501.....	XXX	XXX		
2502.....	XXX	XXX		
2503.....	XXX	XXX		
2598. Summary of remaining write-ins for Line 25 from overflow page.....	XXX	XXX		
2599. Totals (Lines 2501 through 2503 plus 2598) (Line 25 above).....	XXX	XXX		
3001.....	XXX	XXX		
3002.....	XXX	XXX		
3003.....	XXX	XXX		
3098. Summary of remaining write-ins for Line 30 from overflow page.....	XXX	XXX		
3099. Totals (Lines 3001 through 3003 plus 3098) (Line 30 above).....	XXX	XXX		

STATEMENT OF REVENUE AND EXPENSES

	Current Year to Date		Prior Year To Date	Prior Year Ended December 31
	1	2	3	4
	Uncovered	Total	Total	Total
1. Member Months	XXX		9,468	12,466
2. Net premium income (including \$..... non-health premium income)	XXX	120,730	15,328,085	14,355,923
3. Change in unearned premium reserves and reserve for rate credits	XXX		(585,759)	96,821
4. Fee-for-service (net of \$..... medical expenses)	XXX			
5. Risk revenue	XXX			
6. Aggregate write-ins for other health care related revenues	XXX			
7. Aggregate write-ins for other non-health revenues	XXX			
8. Total revenues (Lines 2 to 7)	XXX	120,730	14,742,327	14,452,744
Hospital and Medical:				
9. Hospital/medical benefits		(169,392)	8,916,007	11,907,337
10. Other professional services		3,626	385,930	510,351
11. Outside referrals				
12. Emergency room and out-of-area				
13. Prescription drugs		73,917	6,697,636	3,157,046
14. Aggregate write-ins for other hospital and medical		31,103	1,954,870	1,783,371
15. Incentive pool, withhold adjustments and bonus amounts				
16. Subtotal (Lines 9 to 15)		(60,747)	17,954,443	17,358,106
Less:				
17. Net reinsurance recoveries		(85,139)	209,352	560,026
18. Total hospital and medical (Lines 16 minus 17)		24,393	17,745,092	16,798,079
19. Non-health claims (net)				
20. Claims adjustment expenses, including \$..... cost containment expenses		509,387	1,151,556	1,553,292
21. General administrative expenses		578,174	3,024,746	3,371,740
22. Increase in reserves for life and accident and health contracts (including \$..... increase in reserves for life only)			(5,662,691)	(7,550,254)
23. Total underwriting deductions (Lines 18 through 22)		1,111,953	16,258,703	14,172,857
24. Net underwriting gain or (loss) (Lines 8 minus 23)	XXX	(991,223)	(1,516,376)	279,887
25. Net investment income earned		142,636	255,919	309,613
26. Net realized capital gains (losses) less capital gains tax of \$.....		(21,996)		
27. Net investment gains (losses) (Lines 25 plus 26)		120,640	255,919	309,613
28. Net gain or (loss) from agents' or premium balances charged off [(amount recovered \$.....) (amount charged off \$.....)]				
29. Aggregate write-ins for other income or expenses		150,455		
30. Net income or (loss) after capital gains tax and before all other federal income taxes (Lines 24 plus 27 plus 28 plus 29)	XXX	(720,128)	(1,260,457)	589,499
31. Federal and foreign income taxes incurred	XXX			
32. Net income (loss) (Lines 30 minus 31)	XXX	(720,128)	(1,260,457)	589,499
Details of Write-Ins				
0601.	XXX			
0602.	XXX			
0603.	XXX			
0698. Summary of remaining write-ins for Line 6 from overflow page	XXX			
0699. Totals (Lines 0601 through 0603 plus 0698) (Line 6 above)	XXX			
0701.	XXX			
0702.	XXX			
0703.	XXX			
0798. Summary of remaining write-ins for Line 7 from overflow page	XXX			
0799. Totals (Lines 0701 through 0703 plus 0798) (Line 7 above)	XXX			
1401. DME and Supplies			262	262
1402. Other Medical Expenses		24,546	1,882,309	1,692,215
1403. Transportation-Emergency/Non-Emergency		6,557	72,299	90,894
1498. Summary of remaining write-ins for Line 14 from overflow page				
1499. Totals (Lines 1401 through 1403 plus 1498) (Line 14 above)		31,103	1,954,870	1,783,371
2901. Other Income		150,455		
2902.				
2903.				
2998. Summary of remaining write-ins for Line 29 from overflow page				
2999. Totals (Lines 2901 through 2903 plus 2998) (Line 29 above)		150,455		

STATEMENT OF REVENUE AND EXPENSES (CONTINUED)

	1	2	3
	Current Year To Date	Prior Year To Date	Prior Year Ended December 31
CAPITAL & SURPLUS ACCOUNT			
33. Capital and surplus prior reporting year.....	6,529,692	6,004,814	6,004,814
34. Net income or (loss) from Line 32.....	(720,128)	(1,260,457)	589,499
35. Change in valuation basis of aggregate policy and claim reserves.....			
36. Change in net unrealized capital gains (losses) less capital gains tax of \$.....			
37. Change in net unrealized foreign exchange capital gain or (loss).....			
38. Change in net deferred income tax.....			
39. Change in nonadmitted assets.....	147,082	677,989	272,111
40. Change in unauthorized and certified reinsurance.....			
41. Change in treasury stock.....			
42. Change in surplus notes.....			
43. Cumulative effect of changes in accounting principles.....			
44. Capital Changes:			
44.1 Paid in.....			
44.2 Transferred from surplus (Stock Dividend).....			
44.3 Transferred to surplus.....			
45. Surplus adjustments:			
45.1 Paid in.....		942,264	943,263
45.2 Transferred to capital (Stock Dividend).....			
45.3 Transferred from capital.....			
46. Dividends to stockholders.....			
47. Aggregate write-ins for gains or (losses) in surplus.....		(1,279,995)	(1,279,995)
48. Net change in capital and surplus (Lines 34 to 47).....	(573,046)	(920,200)	524,879
49. Capital and surplus end of reporting period (Line 33 plus 48).....	5,956,646	5,084,614	6,529,692
Details of Write-Ins			
4701. Prior Period Adjustment.....		(1,279,995)	(1,279,995)
4702.....			
4703.....			
4798. Summary of remaining write-ins for Line 47 from overflow page.....			
4799. Totals (Lines 4701 through 4703 plus 4798) (Line 47 above).....		(1,279,995)	(1,279,995)

CASH FLOW

	1	2	3
	Current Year To Date	Prior Year To Date	Prior Year Ended December 31
Cash from Operations			
1. Premiums collected net of reinsurance	130,536	15,442,456	14,597,067
2. Net investment income	137,931	241,170	299,705
3. Miscellaneous income			
4. Total (Lines 1 to 3)	268,468	15,683,626	14,896,772
5. Benefit and loss related payments	1,019,049	17,511,017	17,237,240
6. Net transfers to Separate Accounts, Segregated Accounts and Protected Cell Accounts			
7. Commissions, expenses paid and aggregate write-ins for deductions	1,031,604	1,529,115	5,036,195
8. Dividends paid to policyholders			
9. Federal and foreign income taxes paid (recovered) net of \$..... tax on capital gains (losses)			
10. Total (Lines 5 through 9)	2,050,654	19,040,133	22,273,435
11. Net cash from operations (Line 4 minus Line 10)	(1,782,186)	(3,356,506)	(7,376,663)
Cash from Investments			
12. Proceeds from investments sold, matured or repaid:			
12.1 Bonds	2,087,997	288,157	400,631
12.2 Stocks			
12.3 Mortgage loans			
12.4 Real estate			
12.5 Other invested assets			
12.6 Net gains or (losses) on cash, cash equivalents and short-term investments			
12.7 Miscellaneous proceeds			
12.8 Total investment proceeds (Lines 12.1 to 12.7)	2,087,997	288,157	400,631
13. Cost of investments acquired (long-term only):			
13.1 Bonds			403,933
13.2 Stocks			
13.3 Mortgage loans			
13.4 Real estate			
13.5 Other invested assets			
13.6 Miscellaneous applications			
13.7 Total investments acquired (Lines 13.1 to 13.6)			403,933
14. Net increase/(decrease) in contract loans and premium notes			
15. Net cash from investments (Line 12.8 minus Line 13.7 and Line 14)	2,087,997	288,157	(3,302)
Cash from Financing and Miscellaneous Sources			
16. Cash provided (applied):			
16.1 Surplus notes, capital notes			
16.2 Capital and paid in surplus, less treasury stock		942,264	943,263
16.3 Borrowed funds			
16.4 Net deposits on deposit-type contracts and other insurance liabilities			
16.5 Dividends to stockholders			
16.6 Other cash provided (applied)	(3,319,027)	(847,247)	2,537,022
17. Net cash from financing and miscellaneous sources (Line 16.1 through Line 16.4 minus Line 16.5 plus Line 16.6)	(3,319,027)	95,016	3,480,285
Reconciliation of Cash, Cash Equivalents and Short-Term Investments			
18. Net change in cash, cash equivalents and short-term investments (Line 11, plus Lines 15 and 17)	(3,013,216)	(2,973,333)	(3,899,680)
19. Cash, cash equivalents and short-term investments:			
19.1 Beginning of year	8,808,082	12,707,762	12,707,762
19.2 End of period (Line 18 plus Line 19.1)	5,794,866	9,734,429	8,808,082
Note: Supplemental disclosures of cash flow information for non-cash transactions:			
20.0001.			

EXHIBIT OF PREMIUMS, ENROLLMENT AND UTILIZATION

	1	Comprehensive (Hospital & Medical)		4	5	6	7	8	9	10	11	12	13	14
	Total	2 Individual	3 Group	Medicare Supplement	Vision Only	Dental Only	Federal Employees Health Benefits Plan	Title XVIII Medicare	Title XIX Medicaid	Credit A&H	Disability Income	Long-Term Care	Other Health	Other Non- Health
Total Members at end of:														
1. Prior Year.....	985							985						
2. First Quarter.....														
3. Second Quarter.....														
4. Third Quarter.....														
5. Current Year.....														
6. Current Year Member Months.....														
Total Member Ambulatory Encounters for Period:														
7. Physician.....														
8. Non-Physician.....														
9. Total.....														
10. Hospital Patient Days Incurred.....														
11. Number of Inpatient Admissions.....														
12. Health Premiums Written (a).....	120,730							120,730						
13. Life Premiums Direct.....														
14. Property/Casualty Premiums Written.....														
15. Health Premiums Earned.....	120,730							120,730						
16. Property/Casualty Premiums Earned.....														
17. Amount Paid for Provision of Health Care Services.....	1,464,990							1,464,990						
18. Amount Incurred for Provision of Health Care Services.....	(60,747)							(60,747)						

(a) For health premiums written: amount of Medicare Title XVIII exempt from state taxes or fees \$120,730

CLAIMS UNPAID AND INCENTIVE POOL, WITHHOLD AND BONUS (REPORTED AND UNREPORTED)

Aging Analysis of Unpaid Claims

1 Account	2 1 - 30 Days	3 31 - 60 Days	4 61 - 90 Days	5 91 - 120 Days	6 Over 120 Days	7 Total
Claims Unpaid (Reported)						
0399999 – Aggregate accounts not individually listed-covered	2,096		164		14,843	17,103
0499999 – Subtotals	2,096		164		14,843	17,103
0599999 – Unreported claims and other claim reserves						445,200
0799999 – Total claims unpaid						462,303
0899999 – Accrued medical incentive pool and bonus amounts						

UNDERWRITING AND INVESTMENT EXHIBIT
ANALYSIS OF CLAIMS UNPAID-PRIOR YEAR-NET OF REINSURANCE

Line of Business	Claims Paid Year to Date		Liability End of Current Quarter		5 Claims Incurred in Prior Years (Columns 1 + 3)	6 Estimated Claim Reserve and Claim Liability Dec. 31 of Prior Year
	1 On Claims Incurred Prior to January 1 of Current Year	2 On Claims Incurred During the Year	3 On Claims Unpaid Dec. 31 of Prior Year	4 On Claims Incurred During the Year		
1. Comprehensive (hospital and medical) individual.....						
2. Comprehensive (hospital and medical) group.....						
3. Medicare Supplement.....						
4. Vision only.....						
5. Dental only.....						
6. Federal Employees Health Benefits Plan.....						
7. Title XVIII – Medicare.....	1,550,129		462,303		2,012,432	2,426,657
8. Title XIX – Medicaid.....						
9. Credit A&H.....						
10. Disability income.....						
11. Long-term care.....						
12. Other health.....						
13. Health subtotal (Lines 1 to 12).....	1,550,129		462,303		2,012,432	2,426,657
14. Health care receivables (a).....	8,492				8,492	447,110
15. Other non-health.....						
16. Medical incentive pools and bonus amounts.....						
17. Totals (Lines 13-14+15+16).....	1,541,637		462,303		2,003,940	1,979,547

(a) Excludes \$ loans or advances to providers not yet expensed.

Notes to the Financial Statements

1. Summary of Significant Accounting Policies and Going Concern

A. Accounting Practices

The accompanying financial statements of Commonwealth Care Alliance Health Michigan, Inc. (the "Company") have been prepared in conformity with accounting practices prescribed or permitted by the state of Michigan for determining and reporting the financial conditions and results of operations of an insurance company for determining its solvency under Michigan Insurance law. The National Association of Insurance Commissioners ("NAIC") Accounting Practices and Procedures Manual, ("NAIC SAP") has been adopted as a component of prescribed or permitted practices by the state of Michigan.

A reconciliation of the Company's net income and capital and surplus between NAIC SAP and practices prescribed and permitted by the state of Michigan is shown below:

	SSAP #	F/S Page	F/S Line #	09/30/2025	12/31/2024
Net Income					
(1) State basis (Page 4, Line 32, Columns 2 & 4)	XXX	XXX	XXX	\$ (720,128)	\$ 589,499
(2) State prescribed practices that are an increase / (decrease) from NAIC SAP:					
(3) State permitted practices that are an increase / (decrease) from NAIC SAP:					
(4) NAIC SAP (1-2-3=4)	XXX	XXX	XXX	<u>\$ (720,128)</u>	<u>\$ 589,499</u>
Surplus					
(5) State basis (Page 3, Line 33, Columns 3 & 4)	XXX	XXX	XXX	\$ 5,956,647	\$ 6,529,692
(6) State prescribed practices that are an increase / (decrease) from NAIC SAP:					
(7) State permitted practices that are an increase / (decrease) from NAIC SAP:					
(8) NAIC SAP (5-6-7=8)	XXX	XXX	XXX	<u>\$ 5,956,647</u>	<u>\$ 6,529,692</u>

B. Use of Estimates in the Preparation of the Financial Statements - No Significant Changes

C. Accounting Policy

Health capitation premiums are recognized in the period members are entitled to related health care services. Health care service costs and the related liabilities for claims payable are recorded when medical services are authorized, as well as when services are provided without authorization to the extent such services are expected to be ultimately authorized. Expenses are charged to operations as incurred.

In addition, the Company uses the following accounting policies:

- (1) Short-term investments - No Significant Changes
- (2) Bonds are stated at amortized cost using the scientific interest method. The Company does not own any mandatory convertible securities. The company does not own any SVO-Identified bond ETFs.
- (3) Common stocks - No Significant Changes
- (4) Preferred stocks - No Significant Changes
- (5) Mortgage loans - No Significant Changes
- (6) Asset-backed securities are reported at amortized cost.
- (7) Investments in subsidiaries, controlled and affiliated entities - No Significant Changes
- (8) The Company had no joint ventures, partnership, or limited liability companies.
- (9) Derivatives - No Significant Changes
- (10) Investment income as a factor in the premium deficiency calculation - No Significant Changes
- (11) Liabilities for losses and loss/claim adjustment expenses - No Significant Changes
- (12) Changes in capitalization policy - No Significant Changes
- (13) Pharmaceutical rebate receivables - No Significant Changes

D. Going Concern

In June 2024 the Company notified the Michigan Division of Insurance and Financial Services that it submitted a timely Notice of Non-Renewal to the Center for Medicare and Medicaid Services for Plan Year 2025. As of December 31, 2024 the Company ceased all revenue-generating activities and commenced a wind-down of operations. The termination of the CMS contract and remaining cash and investment balances sufficient to fund the wind down period have resolved the substantial doubt about the Company's ability to continue as a going concern.

2. Accounting Changes and Corrections of Errors - None

3. Business Combinations and Goodwill

- A. Statutory Purchase Method - No Significant Changes
- B. Statutory Merger - No Significant Changes
- C. Assumption Reinsurance - No Significant Changes
- D. Impairment Loss - No Significant Changes
- E. Subcomponents and Calculation of Adjusted Surplus and Total Admitted Goodwill - No Significant Changes

4. Discontinued Operations

- A. Discontinued Operation Disposed of or Classified as Held for Sale - No Significant Changes

Notes to the Financial Statements

4. Discontinued Operations (Continued)

- B. Change in Plan of Sale of Discontinued Operation - No Significant Changes
- C. Nature of Any Significant Continuing Involvement with Discontinued Operations After Disposal - No Significant Changes
- D. Equity Interest Retained in the Discontinued Operation After Disposal - No Significant Changes

5. Investments

- A. Mortgage Loans, including Mezzanine Real Estate Loans - No Significant Changes
- B. Debt Restructuring - No Significant Changes
- C. Reverse Mortgages - No Significant Changes
- D. Asset-Backed Securities - None
- E. Dollar Repurchase Agreements and/or Securities Lending Transactions - None
- F. Repurchase Agreements Transactions Accounted for as Secured Borrowing - None
- G. Reverse Repurchase Agreements Transactions Accounted for as Secured Borrowing - None
- H. Repurchase Agreements Transactions Accounted for as a Sale - None
- I. Reverse Repurchase Agreements Transactions Accounted for as a Sale - None
- J. Real Estate - No Significant Changes
- K. Investments in Tax Credit Structures (tax credit investments) - None
- L. Restricted Assets

(1) Restricted assets (including pledged)

Restricted Asset Category	(1) Total Gross (Admitted & Nonadmitted) Restricted from Current Year	(2) Total Gross (Admitted & Nonadmitted) Restricted From Prior Year	(3) Increase / (Decrease) (1 - 2)	(4) Total Current Year Nonadmitted Restricted	(5) Total Current Year Admitted Restricted (1 - 4)	(6) Gross (Admitted & Nonadmitted) Restricted to Total Assets	(7) Admitted Restricted to Total Admitted Assets
a. Subject to contractual obligation for which liability is not shown	\$	\$	\$	\$	\$	%	%
b. Collateral held under security lending agreements							
c. Subject to repurchase agreements							
d. Subject to reverse repurchase agreements							
e. Subject to dollar repurchase agreements							
f. Subject to dollar reverse repurchase agreements							
g. Placed under option contracts							
h. Letter stock or securities restricted as to sale - excluding FHLB capital stock							
i. FHLB capital stock							
j. On deposit with states	1,664,916	1,633,878	31,038		1,664,916	21.967	23.560
k. On deposit with other regulatory bodies							
l. Pledged as collateral to FHLB (including assets backing funding agreements)							
m. Pledged as collateral not captured in other categories							
n. Other restricted assets							
o. Total restricted assets (Sum of a through n)	<u>\$ 1,664,916</u>	<u>\$ 1,633,878</u>	<u>\$ 31,038</u>		<u>\$ 1,664,916</u>	<u>21.967 %</u>	<u>23.560 %</u>

(2) Detail of assets pledged as collateral not captured in other categories (contracts that share similar characteristics, such as reinsurance and derivatives, are reported in the aggregate) - None

(3) Detail of other restricted assets (contracts that share similar characteristics, such as reinsurance and derivatives, are reported in the aggregate) - None

(4) Collateral received and reflected as assets within the reporting entity's financial statements - None

- M. Working Capital Finance Investments - None
- N. Offsetting and Netting of Assets and Liabilities - None
- O. 5GI Securities - No Significant Changes
- P. Short Sales - No Significant Changes
- Q. Prepayment Penalty and Acceleration Fees - No Significant Changes
- R. Reporting Entity's Share of Cash Pool by Asset Type - None
- S. Aggregate Collateral Loans by Qualifying Investment Collateral - None

6. Joint Ventures, Partnerships and Limited Liability Companies

- A. Investments in Joint Ventures, Partnerships or Limited Liability Companies that Exceed 10% of Admitted Assets - No Significant Changes
- B. Impaired Investments in Joint Ventures, Partnerships and Limited Liability Companies - No Significant Changes

7. Investment Income

- A. Due and Accrued Income Excluded from Surplus - No Significant Changes
- B. Total Amount Excluded - No Significant Changes

Notes to the Financial Statements

7. Investment Income (Continued)

C. The gross, nonadmitted and admitted amounts for interest income due and accrued

Interest Income Due and Accrued	Amount
1. Gross	\$ 23,462
2. Nonadmitted	\$
3. Admitted	\$ 23,462

D. The aggregate deferred interest - None

E. The cumulative amounts of paid-in-kind (PIK) interest included in the current principal balance - None

8. Derivative Instruments

A. Derivatives under SSAP No. 86 - Derivatives - None

B. Derivatives under SSAP No. 108 - Derivative Hedging Variable Annuity Guarantees (Life/Fraternal Only) - None

9. Income Taxes

A. Components of the Net Deferred Tax Asset/(Liability) - No Significant Changes

B. Regarding Deferred Tax Liabilities That Are Not Recognized - No Significant Changes

C. Major Components of Current Income Taxes Incurred - No Significant Changes

D. Among the More Significant Book to Tax Adjustments - No Significant Changes

E. Operating Loss and Tax Credit Carryforwards - No Significant Changes

F. Consolidated Federal Income Tax Return - No Significant Changes

G. Federal or Foreign Income Tax Loss Contingencies - No Significant Changes

H. Repatriation Transition Tax (RTT) - No Significant Changes

I. Alternative Minimum Tax (AMT) Credit - No Significant Changes

10. Information Concerning Parent, Subsidiaries, Affiliates and Other Related Parties

A. On January 1, 2025 the Commonwealth Care Alliance, Inc. ("CCA") and subsidiaries underwent a corporate restructuring. Ownership interest in the Company was transferred to CCA Health Holding Company, LLC and the ultimate controlling parent company became CCA Holding Company, Inc. On April 8, 2025, CareSource acquired CCA and several other affiliated entities. See Schedule Y.

B. Commonwealth Care Alliance, Inc. contributed \$0 and \$943,263 to the Company as of September 30, 2025 and December 31, 2024, respectively.

C. Transactions With Related Party Who Are Not Reported on Schedule Y - No Significant Changes

D. Amounts Due to or From Related Parties

The Company reported amounts due from affiliate, CCA Service Entity Holding Company, LLC of \$483,023 as of September 30, 2025. No formal intercompany agreement currently exists for this arrangement, therefore the balance was non-admitted in accordance with SSAP No. 25. The Company reported amounts due to the parent, CCA Health Holding Company, LLC of \$31,269 as of September 30, 2025 for reimbursement for corporate insurance.

E. Management Service Contracts and Cost Sharing Arrangements - No Significant Changes

F. Guarantees or Contingencies - No Significant Changes

G. Nature of Relationships that Could Affect Operations

CCA Health Holding Company, LLC owns 70% of the Plan. To the best of our knowledge, the existence of the control relationship and related company transactions have not resulted in the operating results of the reporting entity being significantly different from those that would have been obtained if the entities were autonomous.

H. Amount Deducted for Investment in Upstream Company - No Significant Changes

I. Detail of Investments in Affiliates Greater Than 10% of Admitted Assets - No Significant Changes

J. Write-Down for Impairments of Investments in Subsidiary Controlled or Affiliated Companies - No Significant Changes

K. Foreign Subsidiary Value Using CARVM - No Significant Changes

L. Downstream Holding Company Value Using Look-Through Method - No Significant Changes

M. All SCA Investments - No Significant Changes

N. Investment in Insurance SCAs - No Significant Changes

O. SCA and SSAP No. 48 Entity Loss Tracking - No Significant Changes

11. Debt

A. Debt, Including Capital Notes - No Significant Changes

B. FHLB (Federal Home Loan Bank) Agreements - None

12. Retirement Plans, Deferred Compensation, Postemployment Benefits and Compensated Absences and Other Postretirement Benefit Plans

A. Defined Benefit Plan - None

Notes to the Financial Statements

12. Retirement Plans, Deferred Compensation, Postemployment Benefits and Compensated Absences and Other Postretirement Benefit Plans (Continued)

- B. Investment Policies and Strategies of Plan Assets - No Significant Changes
- C. Fair Value of Each Class of Plan Assets - No Significant Changes
- D. Expected Long-Term Rate of Return for the Plan Assets - No Significant Changes
- E. Defined Contribution Plans - No Significant Changes
- F. Multiemployer Plans - No Significant Changes
- G. Consolidated/Holding Company Plans - No Significant Changes
- H. Postemployment Benefits and Compensated Absences - No Significant Changes
- I. Impact of Medicare Modernization Act on Postretirement Benefits (INT 04-17) - No Significant Changes

13. Capital and Surplus, Dividend Restrictions and Quasi-Reorganizations

- A. The Company has 1,238 shares of stock issued at a par value of \$10,000 per share.
- B. Dividend Rate of Preferred Stock - No Significant Changes
- C. Dividend Restrictions - No Significant Changes
- D. Ordinary Dividends - No Significant Changes
- E. Company Profits Paid as Ordinary Dividends - No Significant Changes
- F. Surplus Restrictions - No Significant Changes
- G. Surplus Advances - No Significant Changes
- H. Stock Held for Special Purposes - No Significant Changes
- I. Changes in Special Surplus Funds - No Significant Changes
- J. Unassigned Funds (Surplus) - No Significant Changes
- K. Company-Issued Surplus Debentures or Similar Obligations - No Significant Changes
- L. Impact of Any Restatement Due to Prior Quasi-Reorganizations - No Significant Changes
- M. Effective Date(s) of Quasi-Reorganizations in the Prior 10 Years - No Significant Changes

14. Liabilities, Contingencies and Assessments

- A. Contingent Commitments - No Significant Changes
- B. Assessments - No Significant Changes
- C. Gain Contingencies - No Significant Changes
- D. Claims Related Extra Contractual Obligation and Bad Faith Losses Stemming from Lawsuits - No Significant Changes
- E. Joint and Several Liabilities - No Significant Changes
- F. All Other Contingencies - No Significant Changes

15. Leases - No Significant Changes

16. Information About Financial Instruments With Off-Balance-Sheet Risk And Financial Instruments With Concentrations of Credit Risk - No Significant Changes

17. Sale, Transfer and Servicing of Financial Assets and Extinguishments of Liabilities

- A. Transfers of Receivables Reported as Sales - No Significant Changes
- B. Transfer and Servicing of Financial Assets - None
- C. Wash Sales - None

18. Gain or Loss to the Reporting Entity from Uninsured Plans and the Uninsured Portion of Partially Insured Plans

- A. ASO Plans - No Significant Changes
- B. ASC Plans - No Significant Changes
- C. Medicare or Other Similarly Structured Cost Based Reimbursement Contract - No Significant Changes

19. Direct Premium Written/Produced by Managing General Agents/Third Party Administrators - No Significant Changes

20. Fair Value Measurements

- A. Fair Value Measurement

The Company's financial assets and liabilities carried at fair value have been classified, for disclosure purposes, based on a hierarchy that prioritizes the inputs to valuation techniques used to measure fair value into three broad levels. The hierarchy gives the highest priority to fair values determined using unadjusted quoted prices in active markets for identical assets or liabilities (Level 1) and the lowest priority to fair values determined using unobservable inputs (Level 3). An asset's or liability's classification is determined based on the lowest level input that is significant to its measurement.

For example, a Level 3 fair value measurement may include inputs that are both observable (Levels 1 and 2) and unobservable (Level 3). The levels of the fair value hierarchy are as follows:

Notes to the Financial Statements

20. Fair Value Measurements (Continued)

- Level 1: Inputs are unadjusted, quoted prices for identical assets or liabilities in active markets at the measurement date.
- Level 2: Inputs are other than quoted prices included in level 1 that are observable for the asset or liability through corroboration with market data at the measurement date.
- Level 3: Inputs are unobservable and reflect management’s best estimate of what market participants would use in pricing the asset or liability at the measurement date.

Fair value of actively traded fixed-income and equity securities is based on quoted market prices. Fair value of inactively traded fixed-income securities is based on quoted market prices of identical or similar securities based on observable inputs like interest rates using a market valuation approach is generally classified as Level 2. Investments measured based on the practical expedient being net asset value (NAV), based on the NAV of the fund as provided for in the audited financial statements and other fund reporting, are generally classified as Level 3.

(1) Fair value measurements at reporting date

Description for each class of asset or liability	Level 1	Level 2	Level 3	Net Asset Value (NAV)	Total
a. Assets at fair value					
Cash Equivalent (E-2)	\$ 4,230,222	\$	\$	\$	\$ 4,230,222
Total assets at fair value/NAV	<u>\$ 4,230,222</u>	<u>\$</u>	<u>\$</u>	<u>\$</u>	<u>\$ 4,230,222</u>
b. Liabilities at fair value					
Total liabilities at fair value	<u>\$</u>	<u>\$</u>	<u>\$</u>	<u>\$</u>	<u>\$</u>

(2) Fair value measurements in Level 3 of the fair value hierarchy - None

(3) The Company’s policy for determining when transfers between levels are recognized is determined at the end of the reporting period.

(4) Inputs and techniques used for Level 2 and Level 3 fair values - None

(5) Derivatives - None

B. Other Fair Value Disclosures - None

C. Fair Values for All Financial Instruments by Level 1, 2 and 3

Type of Financial Instrument	Aggregate Fair Value	Admitted Assets	Level 1	Level 2	Level 3	Net Asset Value (NAV)	Not Practicable (Carrying Value)
Bonds- Issuer Credit Obligations	\$ 851,218	\$ 852,930	\$ 699,590	\$ 151,628	\$	\$	\$
Cash Equivalents	4,230,222	4,230,222	4,230,222				

D. Not Practicable to Estimate Fair Value - None

E. Nature and Risk of Investments Reported at NAV - None

21. Other Items

- A. Unusual or Infrequent Items - No Significant Changes
- B. Troubled Debt Restructuring - No Significant Changes
- C. Other Disclosures - No Significant Changes
- D. Business Interruption Insurance Recoveries - No Significant Changes
- E. State and Federal Tax Credits - None
- F. Subprime-Mortgage-Related Risk Exposure - No Significant Changes
- G. Retained Assets - No Significant Changes
- H. Insurance-Linked Securities (ILS) Contracts - No Significant Changes
- I. The Amount That Could Be Realized on Life Insurance Where the Reporting Entity is Owner and Beneficiary or Has Otherwise Obtained Rights to Control the Policy - No Significant Changes

22. Events Subsequent

Type I – Recognized Subsequent Events - None

Type II – Nonrecognized Subsequent Events - None

23. Reinsurance

- A. Ceded Reinsurance Report - No Significant Changes
- B. Uncollectible Reinsurance - No Significant Changes
- C. Commutation of Ceded Reinsurance - No Significant Changes
- D. Certified Reinsurer Rating Downgraded or Status Subject to Revocation - No Significant Changes
- E. Reinsurance Credit - No Significant Changes

24. Retrospectively Rated Contracts & Contracts Subject to Redetermination

- A. Method Used to Estimate - No Significant Changes
- B. Method Used to Record - No Significant Changes
- C. Amount and Percent of Net Retrospective Premiums - No Significant Changes

Notes to the Financial Statements

24. Retrospectively Rated Contracts & Contracts Subject to Redetermination (Continued)

- D. Medical Loss Ratio Rebates Required Pursuant to the Public Health Service Act - No Significant Changes
- E. Risk-Sharing Provisions of the Affordable Care Act (ACA) - None

25. Change in Incurred Claims and Claim Adjustment Expenses

A. Reasons for Changes in the Provision for Incurred Claim and Claim Adjustment Expenses Attributable to Insured Events of Prior Years

Reserves as of December 31, 2024 were \$2,483,046. As of September 30, 2025, \$2,544,016 has been paid for incurred claims and claims adjustment expenses attributable to insured events of prior years. Reserves remaining for prior years are now \$472,810 as a result of re-estimation of unpaid claims and claim adjustment expenses. Therefore, there has been a \$533,780 unfavorable prior-year development since December 31, 2024 to September 30, 2025. The decrease is generally the result of ongoing analysis of recent loss development trends. Original estimates are increased or decreased, as additional information becomes known regarding individual claims.

B. Significant Changes in Methodologies and Assumptions Used in Calculating the Liability for Unpaid Claims and Claim Adjustment Expenses

The Company did not have any significant changes in methodologies or assumptions used in the calculation the liability for unpaid losses or loss adjustment expenses.

26. Intercompany Pooling Arrangements - No Significant Changes

27. Structured Settlements - No Significant Changes

28. Health Care Receivables - No Significant Changes

29. Participating Policies - No Significant Changes

30. Premium Deficiency Reserves

- 1. Liability carried for premium deficiency reserves:..... \$.....
- 2. Date of the most recent evaluation of this liability:..... 09/30/2025.....
- 3. Was anticipated investment income utilized in the calculation?..... NO.....

31. Anticipated Salvage and Subrogation - No Significant Changes

GENERAL INTERROGATORIES
PART 1 - COMMON INTERROGATORIES

GENERAL

- 1.1 Did the reporting entity experience any material transactions requiring the filing of Disclosure of Material Transactions with the State of Domicile, as required by the Model Act?..... NO
- 1.2 If yes, has the report been filed with the domiciliary state?.....
- 2.1 Has any change been made during the year of this statement in the charter, by-laws, articles of incorporation, or deed of settlement of the reporting entity?..... NO
- 2.2 If yes, date of change:.....
- 3.1 Is the reporting entity a member of an Insurance Holding Company System consisting of two or more affiliated persons, one or more of which is an insurer?..... YES
If yes, complete Schedule Y, Parts 1 and 1A.
- 3.2 Have there been any substantial changes in the organizational chart since the prior quarter end?..... NO
- 3.3 If the response to 3.2 is yes, provide a brief description of those changes.
.....
- 3.4 Is the reporting entity publicly traded or a member of a publicly traded group?..... NO
- 3.5 If the response to 3.4 is yes, provide the CIK (Central Index Key) code issued by the SEC for the entity/group.....
- 4.1 Has the reporting entity been a party to a merger or consolidation during the period covered by this statement?..... NO
- 4.2 If yes, provide the name of entity, NAIC Company Code, and state of domicile (use two letter state abbreviation) for any entity that has ceased to exist as a result of the merger or consolidation.

1 Name of Entity	2 NAIC Company Code	3 State of Domicile

- 5. If the reporting entity is subject to a management agreement, including third-party administrator(s), managing general agent(s), attorney-in-fact, or similar agreement, have there been any significant changes regarding the terms of the agreement or principals involved?.....
If yes, attach an explanation.
.....
- 6.1 State as of what date the latest financial examination of the reporting entity was made or is being made..... 12/31/2023
- 6.2 State the as of date that the latest financial examination report became available from either the state of domicile or the reporting entity. This date should be the date of the examined balance sheet and not the date the report was completed or released..... 12/31/2023
- 6.3 State as of what date the latest financial examination report became available to other states or the public from either the state of domicile or the reporting entity. This is the release date or completion date of the examination report and not the date of the examination (balance sheet date)..... 02/26/2025
- 6.4 By what department or departments?
Michigan Department of Insurance and Financial Services.....
- 6.5 Have all financial statement adjustments within the latest financial examination report been accounted for in a subsequent financial statement filed with Departments?..... YES
- 6.6 Have all of the recommendations within the latest financial examination report been complied with?..... NO
- 7.1 Has this reporting entity had any Certificates of Authority, licenses or registrations (including corporate registration, if applicable) suspended or revoked by any governmental entity during the reporting period?..... NO
- 7.2 If yes, give full information
.....
- 8.1 Is the company a subsidiary of a bank holding company regulated by the Federal Reserve Board?..... NO
- 8.2 If response to 8.1 is yes, please identify the name of the bank holding company.
.....
- 8.3 Is the company affiliated with one or more banks, thrifts or securities firms?..... NO
- 8.4 If response to 8.3 is yes, please provide below the names and location (city and state of the main office) of any affiliates regulated by a federal regulatory services agency [i.e. the Federal Reserve Board (FRB), the Office of the Comptroller of the Currency (OCC), the Federal Deposit Insurance Corporation (FDIC) and the Securities Exchange Commission (SEC)] and identify the affiliates primary federal regulator.

1 Affiliate Name	2 Location (City, State)	3 FRB	4 OCC	5 FDIC	6 SEC

GENERAL INTERROGATORIES
PART 1 - COMMON INTERROGATORIES

- 9.1 Are the senior officers (principal executive officer, principal financial officer, principal accounting officer or controller, or persons performing similar functions) of the reporting entity subject to a code of ethics, which includes the following standards? YES
- (a) Honest and ethical conduct, including the ethical handling of actual or apparent conflicts of interest between personal and professional relationships;
 - (b) Full, fair, accurate, timely and understandable disclosure in the periodic reports required to be filed by the reporting entity;
 - (c) Compliance with applicable governmental laws, rules and regulations;
 - (d) The prompt internal reporting of violations to an appropriate person or persons identified in the code; and
 - (e) Accountability for adherence to the code.

9.11 If the response to 9.1 is No, please explain:
.....

9.2 Has the code of ethics for senior managers been amended? NO

9.21 If the response to 9.2 is Yes, provide information related to amendment(s).
.....

9.3 Have any provisions of the code of ethics been waived for any of the specified officers? NO

9.31 If the response to 9.3 is Yes, provide the nature of any waiver(s).
.....

FINANCIAL

10.1 Does the reporting entity report any amounts due from parent, subsidiaries or affiliates on Page 2 of this statement? NO

10.2 If yes, indicate any amounts receivable from parent included in the Page 2 amount: \$

INVESTMENT

11.1 Were any of the stocks, bonds, or other assets of the reporting entity loaned, placed under option agreement, or otherwise made available for use by another person? (Exclude securities under securities lending agreements.) NO

11.2 If yes, give full and complete information relating thereto:
.....

12. Amount of real estate and mortgages held in other invested assets in Schedule BA: \$

13. Amount of real estate and mortgages held in short-term investments: \$

14.1 Does the reporting entity have any investments in parent, subsidiaries and affiliates? NO

14.2 If yes, please complete the following:

	1	2
	Prior Year-End Book / Adjusted Carrying Value	Current Quarter Book / Adjusted Carrying Value
14.21 Bonds	\$	\$
14.22 Preferred Stock		
14.23 Common Stock		
14.24 Short-Term Investments		
14.25 Mortgage Loans on Real Estate		
14.26 All Other		
14.27 Total Investment in Parent, Subsidiaries and Affiliates (Subtotal Lines 14.21 to 14.26)		
14.28 Total Investment in Parent included in Lines 14.21 to 14.26 above		

15.1 Has the reporting entity entered into any hedging transactions reported on Schedule DB? NO

15.2 If yes, has a comprehensive description of the hedging program been made available to the domiciliary state? N/A
If no, attach a description with this statement.
.....

16. For the reporting entity's security lending program, state the amount of the following as of the current statement date:

16.1 Total fair value of reinvested collateral assets reported on Schedule DL, Parts 1 and 2 \$

16.2 Total book adjusted/carrying value of reinvested collateral assets reported on Schedule DL, Parts 1 and 2 \$

16.3 Total payable for securities lending reported on the liability page \$

17. Excluding items in Schedule E - Part 3 - Special Deposits, real estate, mortgage loans and investments held physically in the reporting entity's offices, vaults or safety deposit boxes, were all stocks, bonds and other securities, owned throughout the current year held pursuant to a custodial agreement with a qualified bank or trust company in accordance with Section 1, III - General Examination Considerations, F. Outsourcing of Critical Functions, Custodial or Safekeeping Agreements of the NAIC *Financial Condition Examiners Handbook*? YES

17.1 For all agreements that comply with the requirements of the *Financial Condition Examiners Handbook*, complete the following:

1	2
Name of Custodian(s)	Custodian Address
Wilmington Bank	280 Congress Street Suite 1300 Boston, MA 02210
Huntington National Bank	33205 Grand River Ave Farmington, MI 48336

17.2 For all agreements that do not comply with the requirements of the NAIC *Financial Condition Examiners Handbook*, provide the name, location and a complete explanation:

1	2	3
Name(s)	Location(s)	Complete Explanation(s)

17.3 Have there been any changes, including name changes, in the custodian(s) identified in 17.1 during the current quarter? NO

17.4 If yes, give full and complete information relating thereto:

GENERAL INTERROGATORIES
PART 1 - COMMON INTERROGATORIES

1	2	3	4
Old Custodian	New Custodian	Date of Change	Reason

17.5 Investment management – Identify all investment advisors, investment managers, broker/dealers, including individuals that have the authority to make investment decisions on behalf of the reporting entity. This includes both primary and sub-advisors. For assets that are managed internally by employees of the reporting entity, note as such.

1	2
Name of Firm or Individual	Affiliation
Wilmington Bank	U
Conning	U
Huntington National Bank	U

17.5097 For those firms/individuals listed in the table for Question 17.5, do any firms/individuals unaffiliated with the reporting entity (i.e., designated with a "U") manage more than 10% of the reporting entity's invested assets? YES

17.5098 For firms/individuals unaffiliated with the reporting entity (i.e., designated with a "U") listed in the table for Question 17.5, does the total assets under management aggregate to more than 50% of the reporting entity's invested assets? YES

17.6 For those firms or individuals listed in the table for 17.5 with an affiliation code of "A" (affiliated) or "U" (unaffiliated), provide the information for the table below.

1	2	3	4	5
Central Registration Depository Number	Name of Firm or Individual	Legal Entity Identifier (LEI)	Registered With	Investment Management Agreement (IMA) Filed
120387	Conning	549300TWMG6KQGHEOR94	SEC	NO
	Huntington National Bank	2WHM8VNJH63UN14OL754		NO

18.1 Have all the filing requirements of the *Purposes and Procedures Manual of the NAIC Investment Analysis Office* been followed? YES

18.2 If no, list exceptions:

19. By self-designating 5GI securities, the reporting entity is certifying the following elements for each self-designated 5GI security:

- a. Documentation necessary to permit a full credit analysis of the security does not exist or an NAIC CRP credit rating for an FE or PL security is not available.
- b. Issuer or obligor is current on all contracted interest and principal payments.
- c. The insurer has an actual expectation of ultimate payment of all contracted interest and principal.

Has the reporting entity self-designated 5GI securities? NO

20. By self-designating PLGI securities, the reporting entity is certifying the following elements of each self-designated PLGI security:

- a. The security was purchased prior to January 1, 2018.
- b. The reporting entity is holding capital commensurate with the NAIC Designation reported for the security.
- c. The NAIC Designation was derived from the credit rating assigned by an NAIC CRP in its legal capacity as a NRSRO which is shown on a current private letter rating held by the insurer and available for examination by state insurance regulators.
- d. The reporting entity is not permitted to share this credit rating of the PL security with the SVO.

Has the reporting entity self-designated PLGI securities? NO

21. By assigning FE to a Schedule BA non-registered private fund, the reporting entity is certifying the following elements of each self-designated FE fund:

- a. The shares were purchased prior to January 1, 2019.
- b. The reporting entity is holding capital commensurate with the NAIC Designation reported for the security.
- c. The security had a public credit rating(s) with annual surveillance assigned by an NAIC CRP in its legal capacity as an NRSRO prior to January 1, 2019.
- d. The fund only or predominantly holds bonds in its portfolio.
- e. The current reported NAIC Designation was derived from the public credit rating(s) with annual surveillance assigned by an NAIC CRP in its legal capacity as an NRSRO.
- f. The public credit rating(s) with annual surveillance assigned by an NAIC CRP has not lapsed.

Has the reporting entity assigned FE to Schedule BA non-registered private funds that complied with the above criteria? NO

GENERAL INTERROGATORIES

PART 2 – HEALTH

- 1. Operating Percentages:
 - 1.1 A&H loss percent..... 20.204 %
 - 1.2 A&H cost containment percent..... %
 - 1.3 A&H expense percent excluding cost containment expenses..... 900.818 %
- 2.1 Do you act as a custodian for health savings accounts?..... NO
- 2.2 If yes, please provide the amount of custodial funds held as of the reporting date..... \$
- 2.3 Do you act as an administrator for health savings accounts?..... NO
- 2.4 If yes, please provide the balance of the funds administered as of the reporting date..... \$
- 3. Is the reporting entity licensed or chartered, registered, qualified, eligible or writing business in at least two states?..... NO
- 3.1 If no, does the reporting entity assume reinsurance business that covers risks residing in at least one state other than the state of domicile of the reporting entity?..... NO

SCHEDULE S - CEDED REINSURANCE

Showing All New Reinsurance Treaties - Current Year to Date

1	2	3	4	5	6	7	8	9	10
NAIC Company Code	ID Number	Effective Date	Name of Reinsurer	Domiciliary Jurisdiction	Type of Reinsurance Ceded	Type of Business Ceded	Type of Reinsurer	Certified Reinsurer Rating (1 through 6)	Effective Date of Certified Reinsurer Rating

NONE

SCHEDULE T – PREMIUMS AND OTHER CONSIDERATIONS

Current Year to Date - Allocated by States and Territories

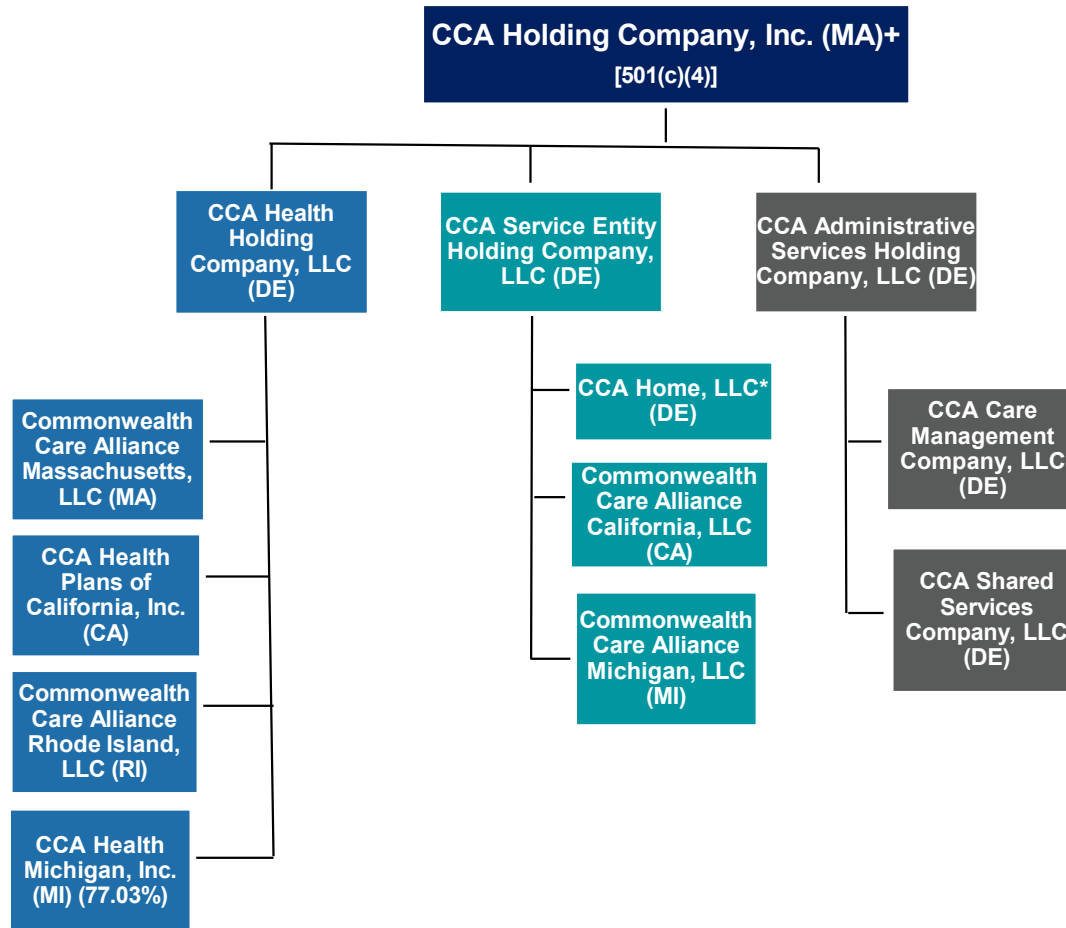
States, Etc.		1	Direct Business Only								
			2	3	4	5	6	7	8	9	10
		Active Status (a)	Accident & Health Premiums	Medicare Title XVIII	Medicaid Title XIX	CHIP Title XXI	Federal Employees Health Benefits Plan Premiums	Life & Annuity Premiums & Other Considerations	Property/Casualty Premiums	Total Columns 2 Through 8	Deposit-Type Contracts
1.	Alabama	AL	N								
2.	Alaska	AK	N								
3.	Arizona	AZ	N								
4.	Arkansas	AR	N								
5.	California	CA	N								
6.	Colorado	CO	N								
7.	Connecticut	CT	N								
8.	Delaware	DE	N								
9.	District of Columbia	DC	N								
10.	Florida	FL	N								
11.	Georgia	GA	N								
12.	Hawaii	HI	N								
13.	Idaho	ID	N								
14.	Illinois	IL	N								
15.	Indiana	IN	N								
16.	Iowa	IA	N								
17.	Kansas	KS	N								
18.	Kentucky	KY	N								
19.	Louisiana	LA	N								
20.	Maine	ME	N								
21.	Maryland	MD	N								
22.	Massachusetts	MA	N								
23.	Michigan	MI	L		120,730					120,730	
24.	Minnesota	MN	N								
25.	Mississippi	MS	N								
26.	Missouri	MO	N								
27.	Montana	MT	N								
28.	Nebraska	NE	N								
29.	Nevada	NV	N								
30.	New Hampshire	NH	N								
31.	New Jersey	NJ	N								
32.	New Mexico	NM	N								
33.	New York	NY	N								
34.	North Carolina	NC	N								
35.	North Dakota	ND	N								
36.	Ohio	OH	N								
37.	Oklahoma	OK	N								
38.	Oregon	OR	N								
39.	Pennsylvania	PA	N								
40.	Rhode Island	RI	N								
41.	South Carolina	SC	N								
42.	South Dakota	SD	N								
43.	Tennessee	TN	N								
44.	Texas	TX	N								
45.	Utah	UT	N								
46.	Vermont	VT	N								
47.	Virginia	VA	N								
48.	Washington	WA	N								
49.	West Virginia	WV	N								
50.	Wisconsin	WI	N								
51.	Wyoming	WY	N								
52.	American Samoa	AS	N								
53.	Guam	GU	N								
54.	Puerto Rico	PR	N								
55.	U.S. Virgin Islands	VI	N								
56.	Northern Mariana Islands	MP	N								
57.	Canada	CAN	N								
58.	Aggregate Other Alien	OT	XXX								
59.	Subtotal	XXX		120,730						120,730	
60.	Reporting entity contributions for employee benefits plans	XXX									
61.	Total (Direct Business)	XXX		120,730						120,730	
Details of Write-Ins											
58001.		XXX									
58002.		XXX									
58003.		XXX									
58998.	Summary of remaining write-ins for Line 58 from overflow page	XXX									
58999.	Totals (Lines 58001 through 58003 plus 58998) (Line 58 above)	XXX									

(a) Active Status Counts

- 1. L – Licensed or Chartered - Licensed insurance carrier or domiciled RRG..... 1
- 2. R – Registered – Non-domiciled RRGs..... 56
- 3. E – Eligible - Reporting entities eligible or approved to write surplus lines in the state.....
- 4. Q – Qualified - Qualified or accredited reinsurer.....
- 5. N – None of the above - Not allowed to write business in the state.....

SCHEDULE Y - INFORMATION CONCERNING ACTIVITIES OF INSURER MEMBERS OF A HOLDING COMPANY GROUP

PART 1 - ORGANIZATIONAL CHART



SCHEDULE Y

PART 1A - DETAILS OF INSURANCE HOLDING COMPANY SYSTEM

1	2	3	4	5	6	7	8	9	10	11	12	13	14	15	16
Group Code	Group Name	NAIC Company Code	ID Number	Federal RSSD	CIK	Name of Securities Exchange if Publicly Traded (U.S. or International)	Names of Parent, Subsidiaries Or Affiliates	Domiciliary Location	Relationship to Reporting Entity	Directly Controlled by (Name of Entity/Person)	Type of Control (Ownership, Board, Management, Attorney-in-Fact, Influence, Other)	If Control is Ownership Provide Percentage	Ultimate Controlling Entity(ies) / Person(s)	Is an SCA Filing Required? (Yes/No)	*
4999	COMMONWEALTH CARE ALLIANCE, INC.	16986	85-4228186				COMMONWEALTH CARE ALLIANCE MASSACHUSETTS, LLC	MA	IA	CCA HEALTH HOLDING COMPANY, LLC	Ownership	100.0	CCA HOLDING COMPANY, INC.	NO	
4999	COMMONWEALTH CARE ALLIANCE, INC.	16984	85-4310885				COMMONWEALTH CARE ALLIANCE RHODE ISLAND, LLC	RI	IA	CCA HEALTH HOLDING COMPANY, LLC	Ownership	100.0	CCA HOLDING COMPANY, INC.	NO	
4999	COMMONWEALTH CARE ALLIANCE, INC.		87-2560730				COMMONWEALTH CARE ALLIANCE MICHIGAN, LLC	MI	NIA	CCA SERVICE ENTITY HOLDING COMPANY, LLC	Ownership	100.0	CCA HOLDING COMPANY, INC.	NO	
4999	COMMONWEALTH CARE ALLIANCE, INC.	16542	81-4977640				CCA HEALTH MICHIGAN, INC.	MI	RE	CCA HEALTH HOLDING COMPANY, LLC	Ownership	70.0	CCA HOLDING COMPANY, INC.	NO	
4999	COMMONWEALTH CARE ALLIANCE, INC.		87-3361607				COMMONWEALTH CARE ALLIANCE CALIFORNIA, LLC	CA	NIA	CCA SERVICE ENTITY HOLDING COMPANY, LLC	Ownership	100.0	CCA HOLDING COMPANY, INC.	NO	
4999	COMMONWEALTH CARE ALLIANCE, INC.		81-4822508				CCA HEALTH PLANS OF CALIFORNIA, INC.	CA	NIA	CCA HEALTH HOLDING COMPANY, LLC	Ownership	100.0	CCA HOLDING COMPANY, INC.	NO	
4999	COMMONWEALTH CARE ALLIANCE, INC.						CCA HOME, LLC	DE	NIA	CCA SERVICE ENTITY HOLDING COMPANY, LLC	Ownership	100.0	CCA HOLDING COMPANY, INC.	NO	
4999	COMMONWEALTH CARE ALLIANCE, INC.		33-1277813				CCA ADMINISTRATIVE SERVICES HOLDING COMPANY, LLC	DE	NIA	CCA HOLDING COMPANY, INC.	Ownership	100.0	CCA HOLDING COMPANY, INC.	NO	
4999	COMMONWEALTH CARE ALLIANCE, INC.		99-5133681				CCA SERVICE ENTITY HOLDING COMPANY, LLC	DE	NIA	CCA HOLDING COMPANY, INC.	Ownership	100.0	CCA HOLDING COMPANY, INC.	NO	
4999	COMMONWEALTH CARE ALLIANCE, INC.		33-1256021				CCA HEALTH HOLDING COMPANY, LLC	DE	NIA	CCA HOLDING COMPANY, INC.	Ownership	100.0	CCA HOLDING COMPANY, INC.	NO	
4999	COMMONWEALTH CARE ALLIANCE, INC.		33-1315857				CCA CARE MANAGEMENT COMPANY, LLC	DE	NIA	CCA ADMINISTRATIVE HOLDING COMPANY, LLC	Ownership	100.0	CCA HOLDING COMPANY, INC.	NO	
4999	COMMONWEALTH CARE ALLIANCE, INC.		99-5126219				CCA SHARED SERVICES, COMPANY LLC	DE	NIA	CCA ADMINISTRATIVE HOLDING COMPANY, LLC	Ownership	100.0	CCA HOLDING COMPANY, INC.	NO	
Asterisk	Explanation														

SUPPLEMENTAL EXHIBITS AND SCHEDULES INTERROGATORIES

The following supplemental reports are required to be filed as part of your statement filing. However, in the event that your company does not transact the type of business for which the special report must be filed, your response of **NO** to the specific interrogatory will be accepted in lieu of filing a "NONE" report and a bar code will be printed below. If the supplement is required of your company but is not being filed for whatever reason enter **SEE EXPLANATION** and provide an explanation following the interrogatory questions.

	Response
1. Will the Medicare Part D Coverage Supplement be filed with the state of domicile and the NAIC with this statement?.....	NO.....

August Filing

2. Will the regulator-only (non-public) Communication of Internal Control Related Matters Noted in Audit be filed with the state of domicile and electronically with the NAIC (as a regulator-only non-public document) by August 1? The response for 1st and 3rd quarters should be N/A. A NO response resulting with a bar code is only appropriate in the 2nd quarter.....	N/A.....
---	----------

EXPLANATION:

1. NOT APPLICABLE TO HMO PLANS.....
2.

BARCODES:

1. 
1 6 5 4 2 2 0 2 5 3 6 5 0 0 0 3

2.

OVERFLOW PAGE FOR WRITE-INS

SCHEDULE A – VERIFICATION

Real Estate

	1	2
	Year to Date	Prior Year Ended December 31
1. Book/adjusted carrying value, December 31 of prior year		
2. Cost of acquired:		
2.1 Actual cost at time of acquisition		
2.2 Additional investment made after acquisition		
3. Current year change in encumbrances		
4. Total gain (loss) on disposals		
5. Deduct amounts received on disposals		
6. Total foreign exchange change in book / adjusted carrying value		
7. Deduct current year's other-than-temporary impairment recognized		
8. Deduct current year's depreciation		
9. Book/adjusted carrying value at the end of current period (Lines 1+2+3+4-5+6-7-8)		
10. Deduct total nonadmitted amounts		
11. Statement value at end of current period (Line 9 minus Line 10)		

NONE

SCHEDULE B – VERIFICATION

Mortgage Loans

	1	2
	Year to Date	Prior Year Ended December 31
1. Book value/recorded investment excluding accrued interest, December 31 of prior year		
2. Cost of acquired:		
2.1 Actual cost at time of acquisition		
2.2 Additional investment made after acquisition		
3. Capitalized deferred interest and other		
4. Accrual of discount		
5. Unrealized valuation increase / (decrease)		
6. Total gain (loss) on disposals		
7. Deduct amounts received on disposals		
8. Deduct amortization of premium and mortgage interest points and commitment fees		
9. Total foreign exchange change in book value/recorded investment excluding accrued interest		
10. Deduct current year's other-than-temporary impairment recognized		
11. Book value/recorded investment excluding accrued interest at end of current period (Lines 1+2+3+4+5+6-7-8+9-10)		
12. Total valuation allowance		
13. Subtotal (Line 11 plus Line 12)		
14. Deduct total nonadmitted amounts		
15. Statement value at end of current period (Line 13 minus Line 14)		

NONE

SCHEDULE BA - VERIFICATION

Other Long-Term Invested Assets

	1	2
	Year to Date	Prior Year Ended December 31
1. Book/adjusted carrying value, December 31 of prior year		
2. Cost of acquired:		
2.1 Actual cost at time of acquisition		
2.2 Additional investment made after acquisition		
3. Capitalized deferred interest and other		
4. Accrual of discount		
5. Unrealized valuation increase / (decrease)		
6. Total gain (loss) on disposals		
7. Deduct amounts received on disposals		
8. Deduct amortization of premium, depreciation and proportional amortization		
9. Total foreign exchange change in book / adjusted carrying value		
10. Deduct current year's other-than-temporary impairment recognized		
11. Book/adjusted carrying value at end of current period (Lines 1+2+3+4+5+6-7-8+9-10)		
12. Deduct total nonadmitted amounts		
13. Statement value at end of current period (Line 11 minus Line 12)		

NONE

SCHEDULE D - VERIFICATION

Bonds and Stocks

	1	2
	Year to Date	Prior Year Ended December 31
1. Book/adjusted carrying value of bonds and stocks, December 31 of prior year	2,959,827	2,944,152
2. Cost of bonds and stocks acquired		403,933
3. Accrual of discount	7,578	17,233
4. Unrealized valuation increase / (decrease)		
5. Total gain (loss) on disposals	(21,997)	
6. Deduct consideration for bonds and stocks disposed of	2,087,995	400,631
7. Deduct amortization of premium	4,483	4,860
8. Total foreign exchange change in book / adjusted carrying value		
9. Deduct current year's other-than-temporary impairment recognized		
10. Total investment income recognized as a result of prepayment penalties and/or acceleration fees		
11. Book/adjusted carrying value at end of current period (Lines 1+2+3+4+5-6-7+8-9+10)	852,930	2,959,827
12. Deduct total nonadmitted amounts		
13. Statement value at end of current period (Line 11 minus Line 12)	852,930	2,959,827

SCHEDULE D – PART 1B

Showing the Acquisitions, Dispositions and Non-Trading Activity
During the Current Quarter for all Bonds and Preferred Stock by NAIC Designation

NAIC Designation	1 Book / Adjusted Carrying Value Beginning of Current Quarter	2 Acquisitions During Current Quarter	3 Dispositions During Current Quarter	4 Non-Trading Activity During Current Quarter	5 Book / Adjusted Carrying Value End of First Quarter	6 Book / Adjusted Carrying Value End of Second Quarter	7 Book / Adjusted Carrying Value End of Third Quarter	8 Book / Adjusted Carrying Value December 31 Prior Year
Issuer Credit Obligations (ICO)								
1. NAIC 1 (a)	1,883,404		1,029,811	(662)	1,982,033	1,883,404	852,931	2,080,407
2. NAIC 2 (a)					250,000			249,344
3. NAIC 3 (a)								
4. NAIC 4 (a)								
5. NAIC 5 (a)								
6. NAIC 6 (a)								
7. Total ICO	1,883,404		1,029,811	(662)	2,232,033	1,883,404	852,931	2,329,751
Asset-Backed Securities (ABS)								
8. NAIC 1	602,406		602,420	14	617,916	602,406		630,076
9. NAIC 2								
10. NAIC 3								
11. NAIC 4								
12. NAIC 5								
13. NAIC 6								
14. Total ABS	602,406		602,420	14	617,916	602,406		630,076
Preferred Stock								
15. NAIC 1								
16. NAIC 2								
17. NAIC 3								
18. NAIC 4								
19. NAIC 5								
20. NAIC 6								
21. Total Preferred Stock								
22. Total ICO, ABS, & Preferred Stock	2,485,810		1,632,231	(648)	2,849,949	2,485,810	852,931	2,959,827

S102

(a) Book/Adjusted Carrying Value column for the end of the current reporting period includes the following amount of short-term and cash equivalent bonds by NAIC designation:
NAIC 1 \$; NAIC 2 \$; NAIC 3 \$; NAIC 4 \$; NAIC 5 \$; NAIC 6 \$

SCHEDULE DA - PART 1
Short-Term Investments

	1	2	3	4	5
	Book / Adjusted Carrying Value	Par Value	Actual Cost	Interest Collected Year To Date	Paid for Accrued Interest Year To Date
7709999999 Total		XXX			

NONE

SCHEDULE DA - VERIFICATION
Short-Term Investments

	1	2
	Year to Date	Prior Year Ended December 31
1. Book/adjusted carrying value, December 31 of prior year		50,598
2. Cost of short-term investments acquired		
3. Accrual of discount		
4. Unrealized valuation increase / (decrease)		
5. Total gain (loss) on disposals		
6. Deduct consideration received on disposals		50,000
7. Deduct amortization of premium		598
8. Total foreign exchange change in book / adjusted carrying value		
9. Deduct current year's other-than-temporary impairment recognized		
10. Book/adjusted carrying value at end of current period (Lines 1+2+3+4+5-6-7+8-9)		
11. Deduct total nonadmitted amounts		
12. Statement value at end of current period (Line 10 minus Line 11)		

(SI-04) Schedule DB - Part A - Verification - Options, Caps, Floors, Collars, Swaps and Forwards

NONE

(SI-04) Schedule DB - Part B - Verification - Futures Contracts

NONE

(SI-05) Schedule DB - Part C - Section 1

NONE

(SI-06) Schedule DB - Part C - Section 2

NONE

(SI-07) Schedule DB - Verification

NONE

SCHEDULE E – PART 2 – VERIFICATION
(Cash Equivalents)

	1	2
	Year to Date	Prior Year Ended December 31
1. Book/adjusted carrying value, December 31 of prior year.....	2,004,295	1,762,721
2. Cost of cash equivalents acquired.....	4,230,222	2,004,295
3. Accrual of discount.....		
4. Unrealized valuation increase / (decrease).....		
5. Total gain (loss) on disposals.....		
6. Deduct consideration received on disposals.....	2,004,295	1,762,721
7. Deduct amortization of premium.....		
8. Total foreign exchange change in book / adjusted carrying value.....		
9. Deduct current year's other-than-temporary impairment recognized.....		
10. Book/adjusted carrying value at end of current period (Lines 1+2+3+4+5-6-7+8-9).....	4,230,222	2,004,295
11. Deduct total nonadmitted amounts.....		
12. Statement value at end of current period (Line 10 minus Line 11).....	4,230,222	2,004,295

(E-01) Schedule A - Part 2

NONE

(E-01) Schedule A - Part 3

NONE

(E-02) Schedule B - Part 2

NONE

(E-02) Schedule B - Part 3

NONE

(E-03) Schedule BA - Part 2

NONE

(E-03) Schedule BA - Part 3

NONE

(E-04) Schedule D - Part 3

NONE

SCHEDULE D - PART 4

Show All Long-Term Bonds and Stock Sold, Redeemed or Otherwise Disposed of During the Current Quarter

1 CUSIP Identification	2 Description	3 Disposal Date	4 Name of Purchaser	5 Number of Shares of Stock	6 Consideration	7 Par Value	8 Actual Cost	9 Prior Year Book / Adjusted Carrying Value	Change in Book / Adjusted Carrying Value					15 Book / Adjusted Carrying Value at Disposal Date	16 Foreign Exchange Gain (Loss) on Disposal	17 Realized Gain (Loss) on Disposal	18 Total Gain (Loss) on Disposal	19 Bond Interest / Stock Dividends Received During Year	20 Stated Contractual Maturity Date	21 NAIC Designation, NAIC Designation Modifier and SVO Administrative Symbol				
									10 Unrealized Valuation Increase / (Decrease)	11 Current Year's (Amortization) / Accretion	12 Current Year's Other-Than- Temporary Impairment Recognized	13 Total Change in B. / A.C.V. (10+11-12)	14 Total Foreign Exchange Change in B./A.C.V.											
Issuer Credit Obligations: U.S. Government Obligations (Exempt from RBC)																								
91282C-FK-2	US TREASURY	09/15/2025	MATURITY	XXX	50,000	50,000	49,088	49,763					237						1,750	09/15/2025	1.A			
0019999999 - Issuer Credit Obligations: U.S. Government Obligations (Exempt from RBC)																								
					50,000	50,000	49,088	49,763					237						1,750	XXX	XXX			
Issuer Credit Obligations: Corporate Bonds (Unaffiliated)																								
06051G-JS-9	BANK OF AMERICA CORPORATION CONSOLIDATED EDISON COMPANY OF	07/07/2025	JANE STREET EXECUTION SERVICES	XXX	242,838	250,000	221,600	234,929					2,926					237,855		4,983	4,983	4,166	07/22/2027	1.G FE
209111-FM-0	NEW YORK	07/07/2025	J.P. MORGAN	XXX	243,680	250,000	236,363	242,333					1,311					243,644		36	36	5,056	11/15/2027	1.G FE
38141G-ZT-4	THE GOLDMAN SACHS GROUP INC.	07/07/2025	SUSQUEHANNA FINANCIAL	XXX	249,248	250,000	245,325	247,667					479					248,146		1,101	1,101	6,184	06/15/2027	1.F FE
0089999999 - Issuer Credit Obligations: Corporate Bonds (Unaffiliated)																								
					735,766	750,000	703,288	724,929					4,716					729,645		6,120	6,120	15,406	XXX	XXX
Issuer Credit Obligations: Bonds Issued from SEC-Registered Business Development Corps, Closed End Funds & REITS (Unaffiliated)																								
756109-BE-3	REALTY INCOME CORPORATION	07/07/2025	MORGAN STANLEY	XXX	249,695	250,000	253,310	250,732					(566)					250,167		(472)	(472)	7,933	11/01/2025	1.G FE
0169999999 - Issuer Credit Obligations: Bonds Issued from SEC-Registered Business Development Corps, Closed End Funds & REITS (Unaffiliated)																								
					249,695	250,000	253,310	250,732					(566)					250,167		(472)	(472)	7,933	XXX	XXX
0489999999 - Subtotal - Issuer Obligations (Unaffiliated)																								
					1,035,461	1,050,000	1,005,686	1,025,424					4,387					1,029,812		5,648	5,648	25,089	XXX	XXX
0509999997 - Subtotals - Issuer Credit Obligations - Part 4																								
					1,035,461	1,050,000	1,005,686	1,025,424					4,387					1,029,812		5,648	5,648	25,089	XXX	XXX
0509999998 - Summary Item from Part 5 for Issuer Credit Obligations (N/A to Quarterly)																								
					XXX	XXX	XXX	XXX	XXX	XXX	XXX	XXX	XXX	XXX	XXX	XXX	XXX	XXX	XXX	XXX	XXX	XXX	XXX	XXX
0509999999 - Subtotals - Issuer Credit Obligations																								
					1,035,461	1,050,000	1,005,686	1,025,424					4,387					1,029,812		5,648	5,648	25,089	XXX	XXX
Asset-Backed Securities: Financial Asset-Backed - Self-Liquidating, Agency Residential Mortgage-Backed Securities - Not/Partially Guaranteed (Not Exempt from RBC)																								
31418E-E6-3	FNCL MA4656 4.500 07/01/52	07/07/2025	VARIOUS	XXX	574,775	603,955	602,162	602,388					32					602,420		(27,645)	(27,645)	16,378	07/01/2052	1.A
1039999999 - Asset-Backed Securities: Financial Asset-Backed - Self-Liquidating, Agency Residential Mortgage-Backed Securities - Not/Partially Guaranteed (Not Exempt from RBC)																								
					574,775	603,955	602,162	602,388					32					602,420		(27,645)	(27,645)	16,378	XXX	XXX
1889999999 - Subtotal - Asset-Backed Securities (Unaffiliated)																								
					574,775	603,955	602,162	602,388					32					602,420		(27,645)	(27,645)	16,378	XXX	XXX
1909999997 - Subtotals - Asset-Backed Securities - Part 4																								
					574,775	603,955	602,162	602,388					32					602,420		(27,645)	(27,645)	16,378	XXX	XXX
1909999998 - Summary Item from Part 5 for Asset-Backed Securities (N/A to Quarterly)																								
					XXX	XXX	XXX	XXX	XXX	XXX	XXX	XXX	XXX	XXX	XXX	XXX	XXX	XXX	XXX	XXX	XXX	XXX	XXX	XXX
1909999999 - Subtotals - Asset-Backed Securities																								
					574,775	603,955	602,162	602,388					32					602,420		(27,645)	(27,645)	16,378	XXX	XXX
2009999999 - Subtotals - Issuer Credit Obligations and Asset-Backed Securities																								
					1,610,236	1,653,955	1,607,848	1,627,812					4,419					1,632,232		(21,997)	(21,997)	41,467	XXX	XXX
6009999999 - Totals																								
					1,610,236	XXX	1,607,848	1,627,812					4,419					1,632,232		(21,997)	(21,997)	41,467	XXX	XXX

(E-06) Schedule DB - Part A - Section 1

NONE

(E-06) Schedule DB - Part A - Section 1 - Description of Hedged Risk(s)

NONE

(E-06) Schedule DB - Part A - Section 1 - Financial or Economic Impact of The Hedge at the End of the Reporting Period

NONE

(E-07) Schedule DB - Part B - Section 1

NONE

(E-07) Schedule DB - Part B - Section 1 - Broker Name

NONE

(E-07) Schedule DB - Part B - Section 1 - Description of Hedged Risk(s)

NONE

(E-07) Schedule DB - Part B - Section 1 - Financial or Economic Impact of The Hedge at the End of the Reporting Period

NONE

(E-08) Schedule DB - Part D - Section 1

NONE

(E-09) Schedule DB - Part D - Section 2 - Collateral Pledged By Reporting Entity

NONE

(E-09) Schedule DB - Part D - Section 2 - Collateral Pledged To Reporting Entity

NONE

(E-10) Schedule DB - Part E

NONE

(E-11) Schedule DL - Part 1

NONE

(E-12) Schedule DL - Part 2

NONE

SCHEDULE E - PART 1 - CASH

Month End Depository Balances

1 Depository	2 Restricted Asset Code	3 Rate of Interest	4 Amount of Interest Received During Current Quarter	5 Amount of Interest Accrued at Current Statement Date	Book Balance at End of Each Month During Current Quarter			9 *
					6 First Month	7 Second Month	8 Third Month	
Huntington National Bank – Birmingham, MI.....					876,021	876,008	880,250	XXX
PNC Bank – Northville, MI.....					589,401	774,112	690,402	XXX
PNC Bank – Northville, MI.....					(19,176)	(5,288)	(9,413)	XXX
PNC Bank – Northville, MI.....					3,406	3,406	3,406	XXX
0199998 – Deposits in depositories that do not exceed the allowable limit in any one depository (see Instructions) - Open Depositories.....								XXX
0199999 – Total Open Depositories.....					1,449,652	1,648,237	1,564,645	XXX
0299998 – Deposits in depositories that do not exceed the allowable limit in any one depository (see Instructions) - Suspended Depositories.....								XXX
0299999 – Total Suspended Depositories.....								XXX
0399999 – Total Cash on Deposit.....					1,449,652	1,648,237	1,564,645	XXX
0499999 – Cash in Company's Office.....					XXX	XXX		XXX
0599999 – Total.....					1,449,652	1,648,237	1,564,645	XXX

SCHEDULE E - PART 2 - CASH EQUIVALENTS

Show Investments Owned End of Current Quarter

1 CUSIP	2 Description	3 Restricted Asset Code	4 Date Acquired	5 Stated Rate of Interest	6 Maturity Date	7 Book / Adjusted Carrying Value	8 Amount of Interest Due and Accrued	9 Amount Received During Year
Exempt Money Market Mutual Funds – as Identified by SVO								
60934N-68-2	FEDERATED HERMES TR OBL-INST	SD	09/30/2025	3.980	XXX	811,985		19,291
8209999999 – Exempt Money Market Mutual Funds – as Identified by SVO						811,985		19,291
All Other Money Market Mutual Funds								
97181C-60-5	WILMINGTON US GOVT MMKT-INS		09/30/2025	3.934	XXX	3,418,236	11,279	61,498
8309999999 – All Other Money Market Mutual Funds						3,418,236	11,279	61,498
8589999999 – Total Cash Equivalents (Unaffiliated)						4,230,221	11,279	80,789
8609999999 – Total Cash Equivalents						4,230,221	11,279	80,789