



# HEALTH QUARTERLY STATEMENT

AS OF SEPTEMBER 30, 2025  
OF THE CONDITION AND AFFAIRS OF THE

## Priority Health

NAIC Group Code 3383 3383 NAIC Company Code 95561 Employer's ID Number 38-2715520  
(Current) (Prior)

Organized under the Laws of Michigan, State of Domicile or Port of Entry MI

Country of Domicile United States of America

Licensed as business type: Health Maintenance Organization

Is HMO Federally Qualified? Yes [ ] No [ X ]

Incorporated/Organized 03/07/1986 Commenced Business 10/15/1986

Statutory Home Office 1231 East Beltline NE, Grand Rapids, MI, US 49525-4501  
(Street and Number) (City or Town, State, Country and Zip Code)

Main Administrative Office 1231 East Beltline NE  
(Street and Number)  
Grand Rapids, MI, US 49525-4501, 616-464-8931  
(City or Town, State, Country and Zip Code) (Area Code) (Telephone Number)

Mail Address 1231 East Beltline NE, Grand Rapids, MI, US 49525-4501  
(Street and Number or P.O. Box) (City or Town, State, Country and Zip Code)

Primary Location of Books and Records 1231 East Beltline NE  
(Street and Number)  
Grand Rapids, MI, US 49525-4501, 616-464-8131  
(City or Town, State, Country and Zip Code) (Area Code) (Telephone Number)

Internet Website Address www.priorityhealth.com

Statutory Statement Contact Stephanie Savic, 616-464-8205  
(Name) (Area Code) (Telephone Number)  
stephanie.savic@corewellhealth.org, 616-942-7916  
(E-mail Address) (FAX Number)

### OFFICERS

Interim President /  
Treasurer Nicholas Patrick Gates  
Secretary David Joseph Weader #

### OTHER

### DIRECTORS OR TRUSTEES

<u>Matthew Elson Cox</u>	<u>Christina Michelle Freese Decker</u>	<u>Richard Lee DeVore</u>
<u>Doug Allen Dozeman</u>	<u>Nicholas Patrick Gates #</u>	<u>Linda Hughley Gillum</u>
<u>Ann Mutzabaugh Harten</u>	<u>Joshua William Hulst</u>	<u>Birgit Maria Klohs</u>
<u>Howard Neal Morof</u>	<u>Edwin Anders Ness</u>	<u>Ora Hirsch Pescovitz</u>
<u>Garrick John Rochow</u>	<u>Mina Patel Sooch</u>	<u>Michael Frederic Sytsma</u>
<u>Alicia Margarita Torres</u>	<u>Elaine Coston Wood</u>	<u>Dana Zakalik #</u>

State of Michigan SS:  
County of \_\_\_\_\_

The officers of this reporting entity being duly sworn, each depose and say that they are the described officers of said reporting entity, and that on the reporting period stated above, all of the herein described assets were the absolute property of the said reporting entity, free and clear from any liens or claims thereon, except as herein stated, and that this statement, together with related exhibits, schedules and explanations therein contained, annexed or referred to, is a full and true statement of all the assets and liabilities and of the condition and affairs of the said reporting entity as of the reporting period stated above, and of its income and deductions therefrom for the period ended, and have been completed in accordance with the NAIC Annual Statement Instructions and Accounting Practices and Procedures manual except to the extent that: (1) state law may differ; or, (2) that state rules or regulations require differences in reporting not related to accounting practices and procedures, according to the best of their information, knowledge and belief, respectively. Furthermore, the scope of this attestation by the described officers also includes the related corresponding electronic filing with the NAIC, when required, that is an exact copy (except for formatting differences due to electronic filing) of the enclosed statement. The electronic filing may be requested by various regulators in lieu of or in addition to the enclosed statement.

Nicholas Patrick Gates  
Interim President / Treasurer

David Joseph Weader  
Secretary

Subscribed and sworn to before me this \_\_\_\_\_ day of \_\_\_\_\_

- a. Is this an original filing? ..... Yes [ X ] No [ ]
- b. If no,
1. State the amendment number.....
  2. Date filed .....
  3. Number of pages attached.....

STATEMENT AS OF SEPTEMBER 30, 2025 OF THE Priority Health

**ASSETS**

	Current Statement Date			4 December 31 Prior Year Net Admitted Assets
	1 Assets	2 Nonadmitted Assets	3 Net Admitted Assets (Cols. 1 - 2)	
1. Bonds .....	675,447,569		675,447,569	644,664,177
2. Stocks:				
2.1 Preferred stocks .....			0	0
2.2 Common stocks .....	754,418,486		754,418,486	666,208,902
3. Mortgage loans on real estate:				
3.1 First liens .....			0	0
3.2 Other than first liens.....			0	0
4. Real estate:				
4.1 Properties occupied by the company (less \$ encumbrances) .....			0	0
4.2 Properties held for the production of income (less \$ ..... encumbrances) .....			0	0
4.3 Properties held for sale (less \$ encumbrances) .....			0	0
5. Cash (\$ .....(96,996,536) ), cash equivalents (\$ .....351,808,190 ) and short-term investments (\$ .....349,915,643 ) .....	604,727,297		604,727,297	647,434,906
6. Contract loans (including \$ ..... premium notes) .....			0	0
7. Derivatives .....			0	0
8. Other invested assets .....	6,700,000	6,700,000	0	0
9. Receivables for securities .....	611,261		611,261	2,154,493
10. Securities lending reinvested collateral assets .....			0	0
11. Aggregate write-ins for invested assets .....	0	0	0	0
12. Subtotals, cash and invested assets (Lines 1 to 11) .....	2,041,904,613	6,700,000	2,035,204,613	1,960,462,478
13. Title plants less \$ ..... charged off (for Title insurers only) .....			0	0
14. Investment income due and accrued .....	6,741,788		6,741,788	6,475,371
15. Premiums and considerations:				
15.1 Uncollected premiums and agents' balances in the course of collection .....	22,939,572	4,824,521	18,115,051	18,383,191
15.2 Deferred premiums, agents' balances and installments booked but deferred and not yet due (including \$ ..... earned but unbilled premiums) .....			0	0
15.3 Accrued retrospective premiums (\$ ..... ) and contracts subject to redetermination (\$ ..... 47,961,773 ) .....	47,961,773		47,961,773	51,942,431
16. Reinsurance:				
16.1 Amounts recoverable from reinsurers .....	2,676,420		2,676,420	1,376,141
16.2 Funds held by or deposited with reinsured companies .....			0	0
16.3 Other amounts receivable under reinsurance contracts .....	931,000		931,000	931,000
17. Amounts receivable relating to uninsured plans .....	68,948,062		68,948,062	57,444,868
18.1 Current federal and foreign income tax recoverable and interest thereon ....			0	0
18.2 Net deferred tax asset .....			0	0
19. Guaranty funds receivable or on deposit .....			0	0
20. Electronic data processing equipment and software .....			0	0
21. Furniture and equipment, including health care delivery assets (\$ ..... ) .....			0	0
22. Net adjustment in assets and liabilities due to foreign exchange rates .....			0	0
23. Receivables from parent, subsidiaries and affiliates .....	42,532,240		42,532,240	20,468,194
24. Health care (\$ ..... 177,839,389 ) and other amounts receivable .....	190,262,534	12,410,241	177,852,293	178,704,863
25. Aggregate write-ins for other-than-invested assets .....	74,536,007	61,097,350	13,438,657	13,339,176
26. Total assets excluding Separate Accounts, Segregated Accounts and Protected Cell Accounts (Lines 12 to 25) .....	2,499,434,009	85,032,112	2,414,401,897	2,309,527,713
27. From Separate Accounts, Segregated Accounts and Protected Cell Accounts .....			0	0
28. Total (Lines 26 and 27)	2,499,434,009	85,032,112	2,414,401,897	2,309,527,713
<b>DETAILS OF WRITE-INS</b>				
1101. ....				
1102. ....				
1103. ....				
1198. Summary of remaining write-ins for Line 11 from overflow page .....	0	0	0	0
1199. Totals (Lines 1101 through 1103 plus 1198)(Line 11 above)	0	0	0	0
2501. Prepaid expenses .....	61,097,350	61,097,350	0	0
2502. Goodwill .....	13,438,657		13,438,657	13,339,176
2503. ....				
2598. Summary of remaining write-ins for Line 25 from overflow page .....	0	0	0	0
2599. Totals (Lines 2501 through 2503 plus 2598)(Line 25 above)	74,536,007	61,097,350	13,438,657	13,339,176

STATEMENT AS OF SEPTEMBER 30, 2025 OF THE Priority Health

**LIABILITIES, CAPITAL AND SURPLUS**

	Current Period			Prior Year
	1 Covered	2 Uncovered	3 Total	4 Total
1. Claims unpaid (less \$ ..... reinsurance ceded) .....	517,933,723	29,498,853	547,432,576	635,638,357
2. Accrued medical incentive pool and bonus amounts .....	16,498,942		16,498,942	30,725,510
3. Unpaid claims adjustment expenses .....	9,390,013	534,807	9,924,820	9,869,007
4. Aggregate health policy reserves, including the liability of \$ ..... for medical loss ratio rebate per the Public Health Service Act .....	82,071,839		82,071,839	99,814,791
5. Aggregate life policy reserves .....			0	0
6. Property/casualty unearned premium reserve .....			0	0
7. Aggregate health claim reserves .....			0	0
8. Premiums received in advance .....	32,562,792		32,562,792	26,121,515
9. General expenses due or accrued .....	40,964,115		40,964,115	47,301,196
10.1 Current federal and foreign income tax payable and interest thereon (including \$ ..... on realized gains (losses)) .....			0	0
10.2 Net deferred tax liability .....			0	0
11. Ceded reinsurance premiums payable .....			0	0
12. Amounts withheld or retained for the account of others.....			0	0
13. Remittances and items not allocated .....	3,315,832		3,315,832	4,527,382
14. Borrowed money (including \$ ..... current) and interest thereon \$ ..... (including \$ ..... current) .....			0	0
15. Amounts due to parent, subsidiaries and affiliates .....	13,231,103		13,231,103	228,702
16. Derivatives .....			0	0
17. Payable for securities .....	6,687,436		6,687,436	4,887,337
18. Payable for securities lending .....			0	0
19. Funds held under reinsurance treaties (with \$ ..... authorized reinsurers, \$ ..... unauthorized reinsurers and \$ ..... certified reinsurers).....			0	0
20. Reinsurance in unauthorized and certified (\$ ..... ) companies .....			0	0
21. Net adjustments in assets and liabilities due to foreign exchange rates .....			0	0
22. Liability for amounts held under uninsured plans .....			0	0
23. Aggregate write-ins for other liabilities (including \$ ..... current) .....	0	0	0	0
24. Total liabilities (Lines 1 to 23) .....	722,655,795	30,033,660	752,689,455	859,113,797
25. Aggregate write-ins for special surplus funds .....	XXX	XXX	1,000,000	1,000,000
26. Common capital stock .....	XXX	XXX	8,471	8,471
27. Preferred capital stock .....	XXX	XXX		
28. Gross paid in and contributed surplus .....	XXX	XXX	35,821,001	35,821,001
29. Surplus notes .....	XXX	XXX		
30. Aggregate write-ins for other-than-special surplus funds .....	XXX	XXX	0	0
31. Unassigned funds (surplus) .....	XXX	XXX	1,624,882,970	1,413,584,444
32. Less treasury stock, at cost:				
32.1 ..... shares common (value included in Line 26 \$ ..... ) .....	XXX	XXX		
32.2 ..... shares preferred (value included in Line 27 \$ ..... ) .....	XXX	XXX		
33. Total capital and surplus (Lines 25 to 31 minus Line 32) .....	XXX	XXX	1,661,712,442	1,450,413,916
34. Total liabilities, capital and surplus (Lines 24 and 33)	XXX	XXX	2,414,401,897	2,309,527,713
<b>DETAILS OF WRITE-INS</b>				
2301. ....				
2302. ....				
2303. ....				
2398. Summary of remaining write-ins for Line 23 from overflow page .....	0	0	0	0
2399. Totals (Lines 2301 through 2303 plus 2398)(Line 23 above)	0	0	0	0
2501. Appropriated Retained Earnings .....	XXX	XXX	1,000,000	1,000,000
2502. ....	XXX	XXX		
2503. ....	XXX	XXX		
2598. Summary of remaining write-ins for Line 25 from overflow page .....	XXX	XXX	0	0
2599. Totals (Lines 2501 through 2503 plus 2598)(Line 25 above)	XXX	XXX	1,000,000	1,000,000
3001. ....	XXX	XXX		
3002. ....	XXX	XXX		
3003. ....	XXX	XXX		
3098. Summary of remaining write-ins for Line 30 from overflow page .....	XXX	XXX	0	0
3099. Totals (Lines 3001 through 3003 plus 3098)(Line 30 above)	XXX	XXX	0	0

**STATEMENT OF REVENUE AND EXPENSES**

	Current Year To Date		Prior Year To Date	Prior Year Ended December 31
	1 Uncovered	2 Total	3 Total	4 Total
1. Member Months .....	XXX	6,523,193	6,955,238	9,286,540
2. Net premium income ( including \$ ..... non-health premium income).....	XXX	4,611,453,028	4,389,192,847	5,849,288,026
3. Change in unearned premium reserves and reserve for rate credits.....	XXX	823,961	1,053,129	482,008
4. Fee-for-service (net of \$ ..... medical expenses) .....	XXX			
5. Risk revenue .....	XXX			
6. Aggregate write-ins for other health care related revenues .....	XXX	2,259,091	2,103,560	2,794,258
7. Aggregate write-ins for other non-health revenues .....	XXX	0	0	0
8. Total revenues (Lines 2 to 7) .....	XXX	4,614,536,080	4,392,349,536	5,852,564,292
<b>Hospital and Medical:</b>				
9. Hospital/medical benefits .....		3,051,272,696	3,000,714,186	4,064,683,358
10. Other professional services .....		69,004,812	65,861,417	85,512,366
11. Outside referrals .....		84,635,280	84,831,882	113,822,880
12. Emergency room and out-of-area .....		175,660,401	159,935,773	216,415,445
13. Prescription drugs .....		692,399,363	577,287,879	770,766,332
14. Aggregate write-ins for other hospital and medical .....	0	0	0	0
15. Incentive pool, withhold adjustments and bonus amounts .....		24,747,925	15,526,462	41,830,444
16. Subtotal (Lines 9 to 15) .....	0	4,097,720,477	3,904,157,599	5,293,030,825
<b>Less:</b>				
17. Net reinsurance recoveries .....		3,280,652	4,855,693	6,165,191
18. Total hospital and medical (Lines 16 minus 17) .....	0	4,094,439,825	3,899,301,906	5,286,865,634
19. Non-health claims (net) .....				
20. Claims adjustment expenses, including \$ ..... 58,697,562 cost containment expenses .....		124,514,997	125,193,110	167,814,668
21. General administrative expenses .....		340,423,534	337,738,733	470,051,518
22. Increase in reserves for life and accident and health contracts (including \$ ..... increase in reserves for life only) .....				0
23. Total underwriting deductions (Lines 18 through 22).....	0	4,559,378,356	4,362,233,749	5,924,731,820
24. Net underwriting gain or (loss) (Lines 8 minus 23) .....	XXX	55,157,724	30,115,787	(72,167,528)
25. Net investment income earned .....		48,000,452	50,459,036	68,316,097
26. Net realized capital gains (losses) less capital gains tax of \$ .....		10,227,912	9,070,580	68,994,103
27. Net investment gains (losses) (Lines 25 plus 26) .....	0	58,228,364	59,529,616	137,310,200
28. Net gain or (loss) from agents' or premium balances charged off [(amount recovered \$ ..... ) (amount charged off \$ ..... )].....				
29. Aggregate write-ins for other income or expenses .....	0	0	0	0
30. Net income or (loss) after capital gains tax and before all other federal income taxes (Lines 24 plus 27 plus 28 plus 29) .....	XXX	113,386,088	89,645,403	65,142,672
31. Federal and foreign income taxes incurred .....	XXX			
32. Net income (loss) (Lines 30 minus 31) .....	XXX	113,386,088	89,645,403	65,142,672
<b>DETAILS OF WRITE-INS</b>				
0601. Wellness Revenue .....	XXX	2,259,091	2,103,560	2,794,258
0602. ....	XXX			
0603. ....	XXX			
0698. Summary of remaining write-ins for Line 6 from overflow page .....	XXX	0	0	0
0699. Totals (Lines 0601 through 0603 plus 0698)(Line 6 above) .....	XXX	2,259,091	2,103,560	2,794,258
0701. ....	XXX			
0702. ....	XXX			
0703. ....	XXX			
0798. Summary of remaining write-ins for Line 7 from overflow page .....	XXX	0	0	0
0799. Totals (Lines 0701 through 0703 plus 0798)(Line 7 above) .....	XXX	0	0	0
1401. ....				
1402. ....				
1403. ....				
1498. Summary of remaining write-ins for Line 14 from overflow page .....	0	0	0	0
1499. Totals (Lines 1401 through 1403 plus 1498)(Line 14 above) .....	0	0	0	0
2901. ....				
2902. ....				
2903. ....				
2998. Summary of remaining write-ins for Line 29 from overflow page .....	0	0	0	0
2999. Totals (Lines 2901 through 2903 plus 2998)(Line 29 above) .....	0	0	0	0

**STATEMENT OF REVENUE AND EXPENSES (Continued)**

	1 Current Year to Date	2 Prior Year to Date	3 Prior Year Ended December 31
<b>CAPITAL AND SURPLUS ACCOUNT</b>			
33. Capital and surplus prior reporting year.....	1,450,413,916	1,358,236,540	1,358,236,540
34. Net income or (loss) from Line 32 .....	113,386,088	89,645,403	65,142,672
35. Change in valuation basis of aggregate policy and claim reserves .....			
36. Change in net unrealized capital gains (losses) less capital gains tax of \$ .....	89,653,281	64,156,363	4,320,444
37. Change in net unrealized foreign exchange capital gain or (loss) .....			
38. Change in net deferred income tax .....			
39. Change in nonadmitted assets .....	8,259,157	41,297,813	22,714,260
40. Change in unauthorized and certified reinsurance .....	0	0	0
41. Change in treasury stock .....	0	0	0
42. Change in surplus notes .....	0	0	0
43. Cumulative effect of changes in accounting principles.....			
44. Capital Changes:			
44.1 Paid in .....			0
44.2 Transferred from surplus (Stock Dividend).....	0	0	0
44.3 Transferred to surplus.....			
45. Surplus adjustments:			
45.1 Paid in .....	0	0	0
45.2 Transferred to capital (Stock Dividend) .....			
45.3 Transferred from capital .....			
46. Dividends to stockholders .....			
47. Aggregate write-ins for gains or (losses) in surplus .....	0	0	0
48. Net change in capital & surplus (Lines 34 to 47) .....	211,298,526	195,099,579	92,177,376
49. Capital and surplus end of reporting period (Line 33 plus 48)	1,661,712,442	1,553,336,119	1,450,413,916
<b>DETAILS OF WRITE-INS</b>			
4701. ....			
4702. ....			
4703. ....			
4798. Summary of remaining write-ins for Line 47 from overflow page .....	0	0	0
4799. Totals (Lines 4701 through 4703 plus 4798)(Line 47 above)	0	0	0

STATEMENT AS OF SEPTEMBER 30, 2025 OF THE Priority Health

**CASH FLOW**

	1 Current Year To Date	2 Prior Year To Date	3 Prior Year Ended December 31
<b>Cash from Operations</b>			
1. Premiums collected net of reinsurance .....	4,603,677,758	4,388,010,910	5,830,395,678
2. Net investment income .....	46,899,538	49,975,248	124,077,301
3. Miscellaneous income .....	2,259,091	2,103,560	2,794,258
4. Total (Lines 1 to 3) .....	4,652,836,387	4,440,089,718	5,957,267,237
5. Benefit and loss related payments .....	4,185,153,433	3,803,553,646	5,086,104,870
6. Net transfers to Separate Accounts, Segregated Accounts and Protected Cell Accounts .....			
7. Commissions, expenses paid and aggregate write-ins for deductions .....	482,722,993	450,678,336	674,695,675
8. Dividends paid to policyholders .....			
9. Federal and foreign income taxes paid (recovered) net of \$ ..... tax on capital gains (losses) .....	0	0	0
10. Total (Lines 5 through 9) .....	4,667,876,426	4,254,231,982	5,760,800,545
11. Net cash from operations (Line 4 minus Line 10) .....	(15,040,039)	185,857,736	196,466,692
<b>Cash from Investments</b>			
12. Proceeds from investments sold, matured or repaid:			
12.1 Bonds .....	104,577,585	93,965,050	127,198,279
12.2 Stocks .....	25,100,000	30,000,000	33,330,319
12.3 Mortgage loans .....	0	0	0
12.4 Real estate .....	0	0	0
12.5 Other invested assets .....	0	0	0
12.6 Net gains or (losses) on cash, cash equivalents and short-term investments .....	0	0	1,968
12.7 Miscellaneous proceeds .....	3,343,331	6,782,048	3,706,025
12.8 Total investment proceeds (Lines 12.1 to 12.7) .....	133,020,916	130,747,098	164,236,591
13. Cost of investments acquired (long-term only):			
13.1 Bonds .....	135,323,903	108,560,661	152,281,451
13.2 Stocks .....	12,593,324	6,204,583	56,090,672
13.3 Mortgage loans .....	0	0	0
13.4 Real estate .....	0	0	0
13.5 Other invested assets .....	0	0	0
13.6 Miscellaneous applications .....	0	0	154,493
13.7 Total investments acquired (Lines 13.1 to 13.6) .....	147,917,227	114,765,244	208,526,616
14. Net increase/(decrease) in contract loans and premium notes .....	0	0	0
15. Net cash from investments (Line 12.8 minus Line 13.7 and Line 14) .....	(14,896,311)	15,981,854	(44,290,025)
<b>Cash from Financing and Miscellaneous Sources</b>			
16. Cash provided (applied):			
16.1 Surplus notes, capital notes .....	0	0	0
16.2 Capital and paid in surplus, less treasury stock .....	0	0	0
16.3 Borrowed funds .....	0	0	0
16.4 Net deposits on deposit-type contracts and other insurance liabilities .....	0	0	0
16.5 Dividends to stockholders .....	0	0	0
16.6 Other cash provided (applied) .....	(12,771,259)	3,416,185	(24,580,367)
17. Net cash from financing and miscellaneous sources (Line 16.1 through Line 16.4 minus Line 16.5 plus Line 16.6) .....	(12,771,259)	3,416,185	(24,580,367)
<b>RECONCILIATION OF CASH, CASH EQUIVALENTS AND SHORT-TERM INVESTMENTS</b>			
18. Net change in cash, cash equivalents and short-term investments (Line 11, plus Lines 15 and 17) .....	(42,707,609)	205,255,775	127,596,300
19. Cash, cash equivalents and short-term investments:			
19.1 Beginning of year .....	647,434,906	519,838,606	519,838,606
19.2 End of period (Line 18 plus Line 19.1) .....	604,727,297	725,094,381	647,434,906

Note: Supplemental disclosures of cash flow information for non-cash transactions:

--	--	--	--

STATEMENT AS OF SEPTEMBER 30, 2025 OF THE Priority Health

**EXHIBIT OF PREMIUMS, ENROLLMENT AND UTILIZATION**

	1 Total	Comprehensive (Hospital & Medical)		4 Medicare Supplement	5 Vision Only	6 Dental Only	7 Federal Employees Health Benefits Plan	8 Title XVIII Medicare	9 Title XIX Medicaid	10 Credit A&H	11 Disability Income	12 Long-Term Care	13 Other Health	14 Other Non-Health
		2 Individual	3 Group											
<b>Total Members at end of:</b>														
1. Prior Year .....	778,805	154,134	361,407	17,554	0	0	2,059	243,651	0	0	0	0	0	0
2. First Quarter .....	734,652	126,003	345,538	17,301	0	0	1,508	244,302	0	0	0	0	0	0
3. Second Quarter .....	725,905	119,948	342,230	17,403	0	0	1,511	244,813	0	0	0	0	0	0
4. Third Quarter .....	716,795	116,701	335,188	17,650			1,495	245,761						
5. Current Year	0													
6. Current Year Member Months	6,523,193	1,073,058	3,078,035	156,240			13,515	2,202,345						
<b>Total Member Ambulatory Encounters for Period:</b>														
7. Physician .....	8,874,384	971,067	2,785,187	325,474			12,520	4,780,136						
8. Non-Physician .....	847,347	92,720	265,936	31,077			1,195	456,419						
9. Total	9,721,731	1,063,787	3,051,123	356,551	0	0	13,715	5,236,555	0	0	0	0	0	0
10. Hospital Patient Days Incurred	439,380	29,930	67,733	18,155			304	323,258						
11. Number of Inpatient Admissions	58,565	5,059	13,808	2,314			134	37,250						
12. Health Premiums Written (a) .....	4,617,004,277	588,679,014	1,614,951,490	36,001,519			7,322,290	2,370,049,964						
13. Life Premiums Direct .....	0													
14. Property/Casualty Premiums Written .....	0													
15. Health Premiums Earned.....	4,617,828,238	588,679,014	1,614,951,490	36,001,519			7,322,290	2,370,873,925						
16. Property/Casualty Premiums Earned	0													
17. Amount Paid for Provision of Health Care Services.....	4,196,872,174	524,111,007	1,429,868,256	30,312,505			6,132,578	2,206,447,829						
18. Amount Incurred for Provision of Health Care Services	4,097,720,478	482,131,415	1,370,921,786	29,813,015			6,162,503	2,208,691,759						

(a) For health premiums written: amount of Medicare Title XVIII exempt from state taxes or fees \$ .....2,370,049,964



**UNDERWRITING AND INVESTMENT EXHIBIT**

**ANALYSIS OF CLAIMS UNPAID - PRIOR YEAR - NET OF REINSURANCE**

Line of Business	Claims Paid Year to Date		Liability End of Current Quarter		5 Claims Incurred in Prior Years (Columns 1 + 3)	6 Estimated Claim Reserve and Claim Liability December 31 of Prior Year
	1 On Claims Incurred Prior to January 1 of Current Year	2 On Claims Incurred During the Year	3 On Claims Unpaid Dec. 31 of Prior Year	4 On Claims Incurred During the Year		
1. Comprehensive (hospital and medical) individual .....	109,483,654	443,990,443	2,252,487	85,880,413	111,736,141	125,559,987
2. Comprehensive (hospital and medical) group .....	197,251,530	1,302,014,770	5,702,215	179,449,495	202,953,745	235,776,503
3. Medicare Supplement .....	4,836,884	25,475,621	76,006	5,229,078	4,912,890	5,804,574
4. Vision only .....					0	0
5. Dental only .....					0	0
6. Federal Employees Health Benefits Plan .....	1,031,986	5,100,592	4,067	608,425	1,036,053	582,566
7. Title XVIII - Medicare .....	260,565,864	2,153,802,857	1,829,479	266,400,911	262,395,343	267,914,726
8. Title XIX - Medicaid .....					0	0
9. Credit A&H .....					0	0
10. Disability Income .....					0	0
11. Long-term care .....					0	0
12. Other health .....					0	0
13. Health subtotal (Lines 1 to 12) .....	573,169,918	3,930,384,283	9,864,254	537,568,322	583,034,172	635,638,356
14. Health care receivables (a) .....		345,656,519			0	0
15. Other non-health .....					0	0
16. Medical incentive pools and bonus amounts .....	38,727,894	246,598	4,963,055	11,535,887	43,690,949	30,725,510
17. Totals (Lines 13 - 14 + 15 + 16)	611,897,812	3,584,974,362	14,827,309	549,104,209	626,725,121	666,363,866

(a) Excludes \$ ..... loans or advances to providers not yet expensed.

## NOTES TO FINANCIAL STATEMENTS

### NOTE 1 Summary of Significant Accounting Policies and Going Concern

#### A. Accounting Practices

The accompanying financial statements have been prepared in conformity with accounting practices prescribed or permitted by the Michigan Department of Insurance and Financial Services (DIFS). DIFS requires that insurance contracts domiciled in Michigan prepare their statutory-basis financial statements in accordance with the National Association of Insurance Commissioners' (NAIC) Accounting Practices and Procedures Manual, subject to any deviations prescribed or permitted by DIFS.

	SSAP #	F/S Page	F/S Line #	2025	2024
<b>NET INCOME</b>					
(1) State basis (Page 4, Line 32, Columns 2 & 4)	XXX	XXX	XXX	\$ 113,386,088	\$ 65,142,672
(2) State Prescribed Practices that are an increase/ (decrease) from NAIC SAP:					
(3) State Permitted Practices that are an increase/(decrease) from NAIC SAP:					
(4) NAIC SAP (1-2-3=4)	XXX	XXX	XXX	\$ 113,386,088	\$ 65,142,672
<b>SURPLUS</b>					
(5) State basis (Page 3, Line 33, Columns 3 & 4)	XXX	XXX	XXX	\$ 1,661,712,442	\$ 1,450,413,916
(6) State Prescribed Practices that are an increase/(decrease) from NAIC SAP:					
(7) State Permitted Practices that are an increase/(decrease) from NAIC SAP:					
(8) NAIC SAP (5-6-7=8)	XXX	XXX	XXX	\$ 1,661,712,442	\$ 1,450,413,916

#### B. Use of Estimates in the Preparation of the Financial Statements

The preparation of financial statements of HMOs requires management to make estimates and assumptions that affect amounts reported in the financial statements and accompanying notes. Such estimates and assumptions could change in the future as more information becomes known, which could impact the amounts reported and disclosed herein.

#### C. Accounting Policy

##### (1) Basis for Short-Term Investments

All short-term investments have been classified in accordance with National Association of Insurance Commissioners (NAIC) guidelines and are stated at amortized cost for financial statement disclosure.

##### (2) Basis for Bonds and Amortization Schedule

Investments in bonds are carried at amortized cost. The cost of bonds is adjusted for amortization of premiums and discounts to maturity using a level-yield method. Realized gains and losses are determined using the specific identification method and are included in operations. The fair value of investments is determined based upon quoted market prices.

##### (3) Basis for Common Stocks

Investments in Common Stocks are reported at fair market value based upon quoted market prices.

##### (4) Basis for Preferred Stocks

NOT APPLICABLE

##### (5) Basis for Mortgage Loans

NOT APPLICABLE

##### (6) Basis for Loan-Backed Securities and Adjustment Methodology

Loan-backed securities as well as other asset-backed securities are held and are reported at their amortized cost.

##### (7) Accounting Policies for Investments in Subsidiaries, Controlled and Affiliated Entities

NOT APPLICABLE

##### (8) Accounting Policies for Investments in Joint Ventures, Partnerships and Limited Liability Entities

NOT APPLICABLE

##### (9) Accounting Policies for Derivatives

NOT APPLICABLE

##### (10) Anticipated Investment Income Used in Premium Deficiency Calculation

The Plan utilizes anticipated investment income as a factor in the premium deficiency calculation.

##### (11) Management's Policies and Methodologies for Estimating Liabilities for Losses and Loss/Claim Adjustment Expenses

Under traditional arrangements, health care costs are recognized as expenses when services are rendered including, based on historical data, an estimate of costs incurred but not reported at the balance sheet date. Under capitation arrangements and risk-savings/sharing programs, health care costs are recognized when accruable under the providers' respective agreements. Adjustments to previously rendered claims reserve estimates are reflected in the statement of operations in the period in which the estimates are revised. Such reserve adjustments consist of restatements of claims estimates and changes in margin associated with these estimates and could be material in the future. Given the nature of the health care costs and provider billing requirements, as defined by the participating providers' agreements, amounts accrued at year-end are paid predominantly in the following year.

##### (12) Changes in the Capitalization Policy and Predefined Thresholds from Prior Period

The Plan has had no change in capitalization policy.

##### (13) Method Used to Estimate Pharmaceutical Rebate Receivables

The Plan estimates pharmaceutical rebate receivables based on historic collection experience and reporting provided by pharmacy benefit managers.

#### D. Going Concern

NONE.

### NOTE 2 Accounting Changes and Corrections of Errors

No significant changes.

### NOTE 3 Business Combinations and Goodwill

On December 1, 2024, the Company acquired Physicians Health Plan of Northern Indiana and its wholly owned subsidiaries, through a statutory purchase. The Company paid \$57,440,000 to the Physicians Health Plan Foundation and generated \$14,660,000 of goodwill. Goodwill amortization was \$1,138,000 for the period ending September 30, 2025.

#### A. Statutory Purchase Method

The transaction was accounted for as a statutory purchase, and reflects the following:

1	2	3	4	5
---	---	---	---	---

**NOTES TO FINANCIAL STATEMENTS**

Purchased Entity	Acquisition Date	Cost of Acquired Entity	Original Amount of Goodwill	Original Amount of Admitted Goodwill
Physicians Health Plan of Northern Indiana	12/01/2024	\$ 57,440,000	\$ 14,660,000	\$ 14,660,000
Total	XXX	\$ 57,440,000	\$ 14,660,000	\$ 14,660,000

1	6	7	8	9
Purchased Entity	Admitted Goodwill as of the Reporting Date	Amount of Goodwill Amortized During the Reporting Period	Book Value of SCA	Admitted Goodwill as a % of SCA BACV, Gross of Admitted Goodwill Col. 6/Col. 8
Physicians Health Plan of Northern Indiana	\$ 13,438,657	\$ 1,137,718	\$ -	0.0%
Total	\$ 13,438,657	\$ 1,137,718	\$ -	XXX

- B. Statutory Merger - NOT APPLICABLE
- C. Assumption Reinsurance - NOT APPLICABLE
- D. Impairment Loss - NOT APPLICABLE
- E. Subcomponents and Calculation of Adjusted Surplus and Total Admitted Goodwill

(1) Capital & Surplus

Less:

- (2) Admitted Positive Goodwill
- (3) Admitted EDP Equipment & Operating System Software
- (4) Admitted Net Deferred Taxes

(5) Adjusted Capital and Surplus (Line 1-2-3-4)

(6) Limitation on amount of goodwill (adjusted capital and surplus times 10% goodwill limitation [Line 5\*10%])

(7) Current period reported Admitted Goodwill

(8) Current Period Admitted Goodwill as a % of prior period Adjusted Capital and Surplus (Line 7/Line 5)

Calculation of Limitation Using Prior Quarter Numbers	Current Reporting Period
\$ 1,659,678,588	XXX
\$ -	XXX
\$ -	XXX
\$ -	XXX
\$ 1,659,678,588	XXX
\$ 165,967,859	XXX
XXX	\$ 13,438,657
XXX	0.8%

**NOTE 4 Discontinued Operations**

No significant changes.

**NOTE 5 Investments**

- D. Asset-Backed Securities - NOT APPLICABLE
- E. Dollar Repurchase Agreements and/or Securities Lending Transactions
- (3) Collateral Received - NOT APPLICABLE
- F. Repurchase Agreements Transactions Accounted for as Secured Borrowing - NOT APPLICABLE
- G. Reverse Repurchase Agreements Transactions Accounted for as Secured Borrowing - NOT APPLICABLE
- H. Repurchase Agreements Transactions Accounted for as a Sale - NOT APPLICABLE
- I. Reverse Repurchase Agreements Transactions Accounted for as a Sale - NOT APPLICABLE
- M. Working Capital Finance Investments
2. Aggregate Maturity Distribution on the Underlying Working Capital Finance Programs - NOT APPLICABLE
3. Any Events of Default or Working Capital Finance Investments - NOT APPLICABLE
- N. Offsetting and Netting of Assets and Liabilities - NOT APPLICABLE
- R. Reporting Entity's Share of Cash Pool by Asset Type - NOT APPLICABLE

**NOTE 6 Joint Ventures, Partnerships and Limited Liability Companies**

No significant changes.

**NOTE 7 Investment Income**

No significant changes.

**NOTE 8 Derivative Instruments**

- A. Derivatives under SSAP No. 86—Derivatives
- (8) Total Premium Costs for Contracts - NOT APPLICABLE
- B. Derivatives under SSAP No. 108—Derivative Hedging Variable Annuity Guarantees
- (2) Recognition of gains/losses and deferred assets and liabilities - NOT APPLICABLE

**NOTE 9 Income Taxes**

The Company is exempt from federal income taxes as an organization described under Internal Revenue Code Section 501(C)(4). Therefore, income tax expense has not been recorded.

**NOTE 10 Information Concerning Parent, Subsidiaries, Affiliates and Other Related Parties**

## NOTES TO FINANCIAL STATEMENTS

No significant changes.

### NOTE 11 Debt

B. FHLB (Federal Home Loan Bank) Agreements - NOT APPLICABLE

### NOTE 12 Retirement Plans, Deferred Compensation, Postemployment Benefits and Compensated Absences and Other Postretirement Benefit Plans

A. Defined Benefit Plan - NOT APPLICABLE

### NOTE 13 Capital and Surplus, Dividend Restrictions and Quasi-Reorganizations

No significant changes.

### NOTE 14 Liabilities, Contingencies and Assessments

A. Contingent Commitments

The Company has committed to its wholly owned subsidiaries, Priority Health Insurance Company, Inc., Priority Health Choice, Inc. and Physicians Health Plan of Northern Indiana and its wholly owned subsidiaries to provide additional capital as needed in order for this subsidiary to meet capital requirements as mandated by the regulating authority.

B. Assessments

The Company incurs an assessment based on certain membership under the Michigan Insurance Provider Assessment (IPA) Act. As the IPA taxes are the Company's responsibility, taxes are recorded under the gross method. The taxes collected and paid are recorded in premium revenue and general administrative expenses, respectively. The Company expensed \$11,124,810 for IPA taxes in 2025. The corresponding liability of \$7,475,717 is recorded in general expenses due or accrued as of September 30, 2025.

### NOTE 15 Leases

No significant changes.

### NOTE 16 Information About Financial Instruments With Off-Balance Sheet Risk and Financial Instruments With Concentrations of Credit Risk

No significant changes.

### NOTE 17 Sale, Transfer and Servicing of Financial Assets and Extinguishments of Liabilities

B. Transfer and Servicing of Financial Assets - NOT APPLICABLE

C. Wash Sales - NOT APPLICABLE

### NOTE 18 Gain or Loss to the Reporting Entity from Uninsured Plans and the Uninsured Portion of Partially Insured Plans

No significant changes.

### NOTE 19 Direct Premium Written/Produced by Managing General Agents/Third Party Administrators

No significant changes.

### NOTE 20 Fair Value Measurements

A.

#### (1) Fair Value Measurements at Reporting Date

Description for each class of asset or liability	(Level 1)	(Level 2)	(Level 3)	Net Asset Value (NAV)	Total
a. Assets at fair value					
Common Stock	\$ 338,041,106	\$ -	\$ -	\$ -	\$ 338,041,106
Total assets at fair value/NAV	\$ 338,041,106	\$ -	\$ -	\$ -	\$ 338,041,106

B. Fair Value Reporting under SSAP 100 and Other Accounting Pronouncements - NOT APPLICABLE

C. Aggregate fair value for all financial instruments and the level within the fair value hierarchy in which the fair value measurements in their entirety fall - NOT APPLICABLE

D. Not Practicable to Estimate Fair Value - NOT APPLICABLE

E. NAV Practical Expedient Investments - NOT APPLICABLE

### NOTE 21 Other Items

No significant changes.

### NOTE 22 Events Subsequent

In July 2025, Priority Health entered into a Member Substitution Agreement with Group Health Cooperative of Eau Claire (GHC), which upon closing will cause Priority Health to acquire control of GHC. The parties are waiting for approval from the State of Wisconsin, Office of the Commissioner of Insurance. Upon closing, Priority Health will become the sole governing member of GHC.

### NOTE 23 Reinsurance

No significant changes.

### NOTE 24 Retrospectively Rated Contracts & Contracts Subject to Redetermination

E. Risk Sharing Provisions of the Affordable Care Act

(1) Did the reporting entity write accident and health insurance premium which is subject to the Affordable Care Act risk sharing provisions (YES/NO)?

Yes [X] No [ ]

(2) Impact of Risk Sharing Provisions of the Affordable Care Act on Admitted Assets, Liabilities and Revenue for the Current Year

Amount

a. Permanent ACA Risk Adjustment Program

Assets

1. Premium adjustments receivable due to ACA Risk Adjustment (including high risk pool payments)

\$ -

## NOTES TO FINANCIAL STATEMENTS

## Liabilities

2. Risk adjustment user fees payable for ACA Risk Adjustment	\$ 340,000
3. Premium adjustments payable due to ACA Risk Adjustment (including high risk pool premium)	\$ 82,021,000

## Operations (Revenue &amp; Expense)

4. Reported as revenue in premium for accident and health contracts (written/collected) due to ACA Risk Adjustment	\$ (69,686,000)
5. Reported in expenses as ACA risk adjustment user fees (incurred/paid)	\$ 315,000

(3) Roll forward of prior year ACA risk sharing provisions for the following asset (gross of any nonadmission) and liability balances along with the reasons for adjustments to prior year balance.

	Accrued During the Prior Year on Business Written Before December 31 of the Prior Year		Received or Paid as of the Current Year on Business Written Before December 31 of the Prior Year		Differences		Adjustments			Unsettled Balances as of the Reporting Date	
					Prior Year Accrued Less Payments (Col 1 - 3)	Prior Year Accrued Less Payments (Col 2 - 4)	To Prior Year Balances	To Prior Year Balances		Cumulative Balance from Prior Years (Col 1-3+7)	Cumulative Balance from Prior Years (Col 2-4+8)
	1	2	3	4	5	6	7	8	Ref	9	10
	Receivable	Payable	Receivable	Payable	Receivable	Payable	Receivable	Payable		Receivable	Payable
a. Permanent ACA Risk Adjustment Program											
1. Premium adjustments receivable (including high risk pool payments)	\$ -	\$ -	\$ -	\$ -	\$ -	\$ -	\$ -	\$ -	A	\$ -	\$ -
2. Premium adjustments (payable) (including high risk pool premium)	\$ -	\$99,815,000	\$ -	\$87,480,000	\$ -	\$12,335,000		\$ (16,210,000)	B	\$ -	\$(3,875,000)
3. Total ACA Permanent Risk Adjustment Program	\$ -	\$99,815,000	\$ -	\$87,480,000	\$ -	\$12,335,000	\$ -	\$ (16,210,000)		\$ -	\$(3,875,000)

## Explanations of Adjustments

B.  
Settlement Finalized.

**NOTE 25 Change in Incurred Claims and Claim Adjustment Expenses**

Adjustments to previously rendered claims reserve estimates are reflected in the statement of operations in the period in which the estimates are revised. Such reserve adjustments consist of restatements of claim estimates and release of any margin associated with these estimates. Reserve adjustments have decreased by \$52,604,000 from \$635,638,000 to \$583,034,000 in 2025.

**NOTE 26 Intercompany Pooling Arrangements**

No significant changes.

**NOTE 27 Structured Settlements**

Not applicable.

**NOTE 28 Health Care Receivables**

No significant changes.

**NOTE 29 Participating Policies**

No significant changes.

**NOTE 30 Premium Deficiency Reserves**

No significant changes.

**NOTE 31 Anticipated Salvage and Subrogation**

No significant changes.

STATEMENT AS OF SEPTEMBER 30, 2025 OF THE Priority Health  
**GENERAL INTERROGATORIES**

**PART 1 - COMMON INTERROGATORIES**

**GENERAL**

- 1.1 Did the reporting entity experience any material transactions requiring the filing of Disclosure of Material Transactions with the State of Domicile, as required by the Model Act? ..... Yes [ ] No [ X ]
- 1.2 If yes, has the report been filed with the domiciliary state? ..... Yes [ ] No [ ]
- 2.1 Has any change been made during the year of this statement in the charter, by-laws, articles of incorporation, or deed of settlement of the reporting entity? ..... Yes [ ] No [ X ]
- 2.2 If yes, date of change: .....
- 3.1 Is the reporting entity a member of an Insurance Holding Company System consisting of two or more affiliated persons, one or more of which is an insurer? ..... Yes [ X ] No [ ]  
 If yes, complete Schedule Y, Parts 1 and 1A.
- 3.2 Have there been any substantial changes in the organizational chart since the prior quarter end? ..... Yes [ ] No [ X ]
- 3.3 If the response to 3.2 is yes, provide a brief description of those changes.  
 .....
- 3.4 Is the reporting entity publicly traded or a member of a publicly traded group? ..... Yes [ ] No [ X ]
- 3.5 If the response to 3.4 is yes, provide the CIK (Central Index Key) code issued by the SEC for the entity/group. ....
- 4.1 Has the reporting entity been a party to a merger or consolidation during the period covered by this statement? ..... Yes [ ] No [ X ]
- 4.2 If yes, provide the name of the entity, NAIC Company Code, and state of domicile (use two letter state abbreviation) for any entity that has ceased to exist as a result of the merger or consolidation.

1 Name of Entity	2 NAIC Company Code	3 State of Domicile

5. If the reporting entity is subject to a management agreement, including third-party administrator(s), managing general agent(s), attorney-in-fact, or similar agreement, have there been any significant changes regarding the terms of the agreement or principals involved? ..... Yes [ ] No [ X ] N/A [ ]  
 If yes, attach an explanation.  
 .....
- 6.1 State as of what date the latest financial examination of the reporting entity was made or is being made. .... 12/31/2022
- 6.2 State the as of date that the latest financial examination report became available from either the state of domicile or the reporting entity. This date should be the date of the examined balance sheet and not the date the report was completed or released. .... 12/31/2022
- 6.3 State as of what date the latest financial examination report became available to other states or the public from either the state of domicile or the reporting entity. This is the release date or completion date of the examination report and not the date of the examination (balance sheet date). .... 02/12/2024
- 6.4 By what department or departments?  
 State of Michigan Department of Insurance and Financial Services .....
- 6.5 Have all financial statement adjustments within the latest financial examination report been accounted for in a subsequent financial statement filed with Departments? ..... Yes [ ] No [ ] N/A [ X ]
- 6.6 Have all of the recommendations within the latest financial examination report been complied with? ..... Yes [ X ] No [ ] N/A [ ]
- 7.1 Has this reporting entity had any Certificates of Authority, licenses or registrations (including corporate registration, if applicable) suspended or revoked by any governmental entity during the reporting period? ..... Yes [ ] No [ X ]
- 7.2 If yes, give full information:  
 .....
- 8.1 Is the company a subsidiary of a bank holding company regulated by the Federal Reserve Board? ..... Yes [ ] No [ X ]
- 8.2 If response to 8.1 is yes, please identify the name of the bank holding company.  
 .....
- 8.3 Is the company affiliated with one or more banks, thrifts or securities firms? ..... Yes [ ] No [ X ]
- 8.4 If response to 8.3 is yes, please provide below the names and location (city and state of the main office) of any affiliates regulated by a federal regulatory services agency [i.e. the Federal Reserve Board (FRB), the Office of the Comptroller of the Currency (OCC), the Federal Deposit Insurance Corporation (FDIC) and the Securities Exchange Commission (SEC)] and identify the affiliate's primary federal regulator.

1 Affiliate Name	2 Location (City, State)	3 FRB	4 OCC	5 FDIC	6 SEC

STATEMENT AS OF SEPTEMBER 30, 2025 OF THE Priority Health  
**GENERAL INTERROGATORIES**

- 9.1 Are the senior officers (principal executive officer, principal financial officer, principal accounting officer or controller, or persons performing similar functions) of the reporting entity subject to a code of ethics, which includes the following standards? ..... Yes  No   
 (a) Honest and ethical conduct, including the ethical handling of actual or apparent conflicts of interest between personal and professional relationships;  
 (b) Full, fair, accurate, timely and understandable disclosure in the periodic reports required to be filed by the reporting entity;  
 (c) Compliance with applicable governmental laws, rules and regulations;  
 (d) The prompt internal reporting of violations to an appropriate person or persons identified in the code; and  
 (e) Accountability for adherence to the code.
- 9.11 If the response to 9.1 is No, please explain:  
 .....
- 9.2 Has the code of ethics for senior managers been amended? ..... Yes  No
- 9.21 If the response to 9.2 is Yes, provide information related to amendment(s).  
 .....
- 9.3 Have any provisions of the code of ethics been waived for any of the specified officers? ..... Yes  No
- 9.31 If the response to 9.3 is Yes, provide the nature of any waiver(s).  
 .....

**FINANCIAL**

- 10.1 Does the reporting entity report any amounts due from parent, subsidiaries or affiliates on Page 2 of this statement? ..... Yes  No
- 10.2 If yes, indicate any amounts receivable from parent included in the Page 2 amount: ..... \$ 9,308,226

**INVESTMENT**

- 11.1 Were any of the stocks, bonds, or other assets of the reporting entity loaned, placed under option agreement, or otherwise made available for use by another person? (Exclude securities under securities lending agreements.) ..... Yes  No
- 11.2 If yes, give full and complete information relating thereto:  
 .....
12. Amount of real estate and mortgages held in other invested assets in Schedule BA: ..... \$
13. Amount of real estate and mortgages held in short-term investments: ..... \$
- 14.1 Does the reporting entity have any investments in parent, subsidiaries and affiliates? ..... Yes  No
- 14.2 If yes, please complete the following:
- |   | 1<br>Prior Year-End<br>Book/Adjusted<br>Carrying Value | 2<br>Current Quarter<br>Book/Adjusted<br>Carrying Value |
|---|--|---|
| 14.21 Bonds .....   | \$ 0   | \$  |
| 14.22 Preferred Stock .....   | \$ 0   | \$  |
| 14.23 Common Stock .....  | \$ 355,501,583   | \$ 416,377,380  |
| 14.24 Short-Term Investments .....  | \$ 0   | \$  |
| 14.25 Mortgage Loans on Real Estate .....   | \$ 0   | \$  |
| 14.26 All Other .....   | \$ 0   | \$  |
| 14.27 Total Investment in Parent, Subsidiaries and Affiliates (Subtotal Lines 14.21 to 14.26) ..... | \$ 355,501,583   | \$ 416,377,380  |
| 14.28 Total Investment in Parent included in Lines 14.21 to 14.26 above .....                       | \$   | \$  |
- 15.1 Has the reporting entity entered into any hedging transactions reported on Schedule DB? ..... Yes  No
- 15.2 If yes, has a comprehensive description of the hedging program been made available to the domiciliary state? ..... Yes  No  N/A   
 If no, attach a description with this statement.  
 .....
16. For the reporting entity's security lending program, state the amount of the following as of the current statement date:
- 16.1 Total fair value of reinvested collateral assets reported on Schedule DL, Parts 1 and 2. .... \$ 0
- 16.2 Total book/adjusted carrying value of reinvested collateral assets reported on Schedule DL, Parts 1 and 2 ..... \$ 0
- 16.3 Total payable for securities lending reported on the liability page. .... \$ 0

STATEMENT AS OF SEPTEMBER 30, 2025 OF THE Priority Health  
**GENERAL INTERROGATORIES**

17. Excluding items in Schedule E - Part 3 - Special Deposits, real estate, mortgage loans and investments held physically in the reporting entity's offices, vaults or safety deposit boxes, were all stocks, bonds and other securities, owned throughout the current year held pursuant to a custodial agreement with a qualified bank or trust company in accordance with Section 1, III - General Examination Considerations, F. Outsourcing of Critical Functions, Custodial or Safekeeping Agreements of the NAIC Financial Condition Examiners Handbook? ..... Yes [ X ] No [ ]
- 17.1 For all agreements that comply with the requirements of the NAIC Financial Condition Examiners Handbook, complete the following:

1 Name of Custodian(s)	2 Custodian Address
Northern Trust .....	Chicago, IL .....

- 17.2 For all agreements that do not comply with the requirements of the NAIC Financial Condition Examiners Handbook, provide the name, location and a complete explanation:

1 Name(s)	2 Location(s)	3 Complete Explanation(s)

- 17.3 Have there been any changes, including name changes, in the custodian(s) identified in 17.1 during the current quarter? ..... Yes [ ] No [ X ]

- 17.4 If yes, give full information relating thereto:

1 Old Custodian	2 New Custodian	3 Date of Change	4 Reason

- 17.5 Investment management – Identify all investment advisors, investment managers, broker/dealers, including individuals that have the authority to make investment decisions on behalf of the reporting entity. This includes both primary and sub-advisors. For assets that are managed internally by employees of the reporting entity, note as such. ["...that have access to the investment accounts"; "...handle securities"]

1 Name of Firm or Individual	2 Affiliation
BlackRock Financial Management, Inc .....	U.....
Sun Life Capital Management, LLC .....	U.....
Robert W. Baird & Co. Inc. ....	U.....
Pacific Investment Management Company, LLC .....	U.....

- 17.5097 For those firms/individuals listed in the table for Question 17.5, do any firms/individuals unaffiliated with the reporting entity (i.e. designated with a "U") manage more than 10% of the reporting entity's invested assets?..... Yes [ X ] No [ ]

- 17.5098 For firms/individuals unaffiliated with the reporting entity (i.e. designated with a "U") listed in the table for Question 17.5, does the total assets under management aggregate to more than 50% of the reporting entity's invested assets?..... Yes [ ] No [ X ]

- 17.6 For those firms or individuals listed in the table for 17.5 with an affiliation code of "A" (affiliated) or "U" (unaffiliated), provide the information for the table below.

1 Central Registration Depository Number	2 Name of Firm or Individual	3 Legal Entity Identifier (LEI)	4 Registered With	5 Investment Management Agreement (IMA) Filed
.....	BlackRock Financial Management, Inc .....	549300LVXY1VJKE13M84 .....	SEC .....	NO.....
.....	Sun Life Capital Management, LLC .....	5493001YLOMBHWNPEN55 .....	SEC .....	NO.....
.....	Robert W. Baird & Co. Inc. ....	549300772USAHRDGL053 .....	SEC .....	NO.....
.....	Pacific Investment Management Company, LLC .....	549300KGPYQZXGMYYN38 .....	SEC .....	NO.....

- 18.1 Have all the filing requirements of the Purposes and Procedures Manual of the NAIC Investment Analysis Office been followed? ..... Yes [ X ] No [ ]

- 18.2 If no, list exceptions:  
 .....

19. By self-designating 5GI securities, the reporting entity is certifying the following elements for each self-designated 5GI security:

- a. Documentation necessary to permit a full credit analysis of the security does not exist or an NAIC CRP credit rating for an FE or PL security is not available.
- b. Issuer or obligor is current on all contracted interest and principal payments.
- c. The insurer has an actual expectation of ultimate payment of all contracted interest and principal.

- Has the reporting entity self-designated 5GI securities? ..... Yes [ ] No [ X ]

20. By self-designating PLGI securities, the reporting entity is certifying the following elements of each self-designated PLGI security:

- a. The security was purchased prior to January 1, 2018.
- b. The reporting entity is holding capital commensurate with the NAIC Designation reported for the security.
- c. The NAIC Designation was derived from the credit rating assigned by an NAIC CRP in its legal capacity as a NRSRO which is shown on a current private letter rating held by the insurer and available for examination by state insurance regulators.
- d. The reporting entity is not permitted to share this credit rating of the PL security with the SVO.

- Has the reporting entity self-designated PLGI securities? ..... Yes [ ] No [ X ]

21. By assigning FE to a Schedule BA non-registered private fund, the reporting entity is certifying the following elements of each self-designated FE fund:

- a. The shares were purchased prior to January 1, 2019.
- b. The reporting entity is holding capital commensurate with the NAIC Designation reported for the security.
- c. The security had a public credit rating(s) with annual surveillance assigned by an NAIC CRP in its legal capacity as an NRSRO prior to January 1, 2019.
- d. The fund only or predominantly holds bonds in its portfolio.
- e. The current reported NAIC Designation was derived from the public credit rating(s) with annual surveillance assigned by an NAIC CRP in its legal capacity as an NRSRO.
- f. The public credit rating(s) with annual surveillance assigned by an NAIC CRP has not lapsed.

- Has the reporting entity assigned FE to Schedule BA non-registered private funds that complied with the above criteria? ..... Yes [ ] No [ X ]

STATEMENT AS OF SEPTEMBER 30, 2025 OF THE Priority Health  
**GENERAL INTERROGATORIES**

**PART 2 - HEALTH**

1. Operating Percentages:
- 1.1 A&H loss percent ..... 90.061 %
  - 1.2 A&H cost containment percent ..... 1.273 %
  - 1.3 A&H expense percent excluding cost containment expenses ..... 8.809 %
- 2.1 Do you act as a custodian for health savings accounts? ..... Yes [  ] No [  ]
- 2.2 If yes, please provide the amount of custodial funds held as of the reporting date ..... \$.....
- 2.3 Do you act as an administrator for health savings accounts? ..... Yes [  ] No [  ]
- 2.4 If yes, please provide the balance of the funds administered as of the reporting date ..... \$.....
3. Is the reporting entity licensed or chartered, registered, qualified, eligible or writing business in at least two states? ..... Yes [  ] No [  ]
- 3.1 If no, does the reporting entity assume reinsurance business that covers risks residing in at least one state other than the state of domicile of the reporting entity? ..... Yes [  ] No [  ]



**SCHEDULE T - PREMIUMS AND OTHER CONSIDERATIONS**

Current Year to Date - Allocated by States and Territories

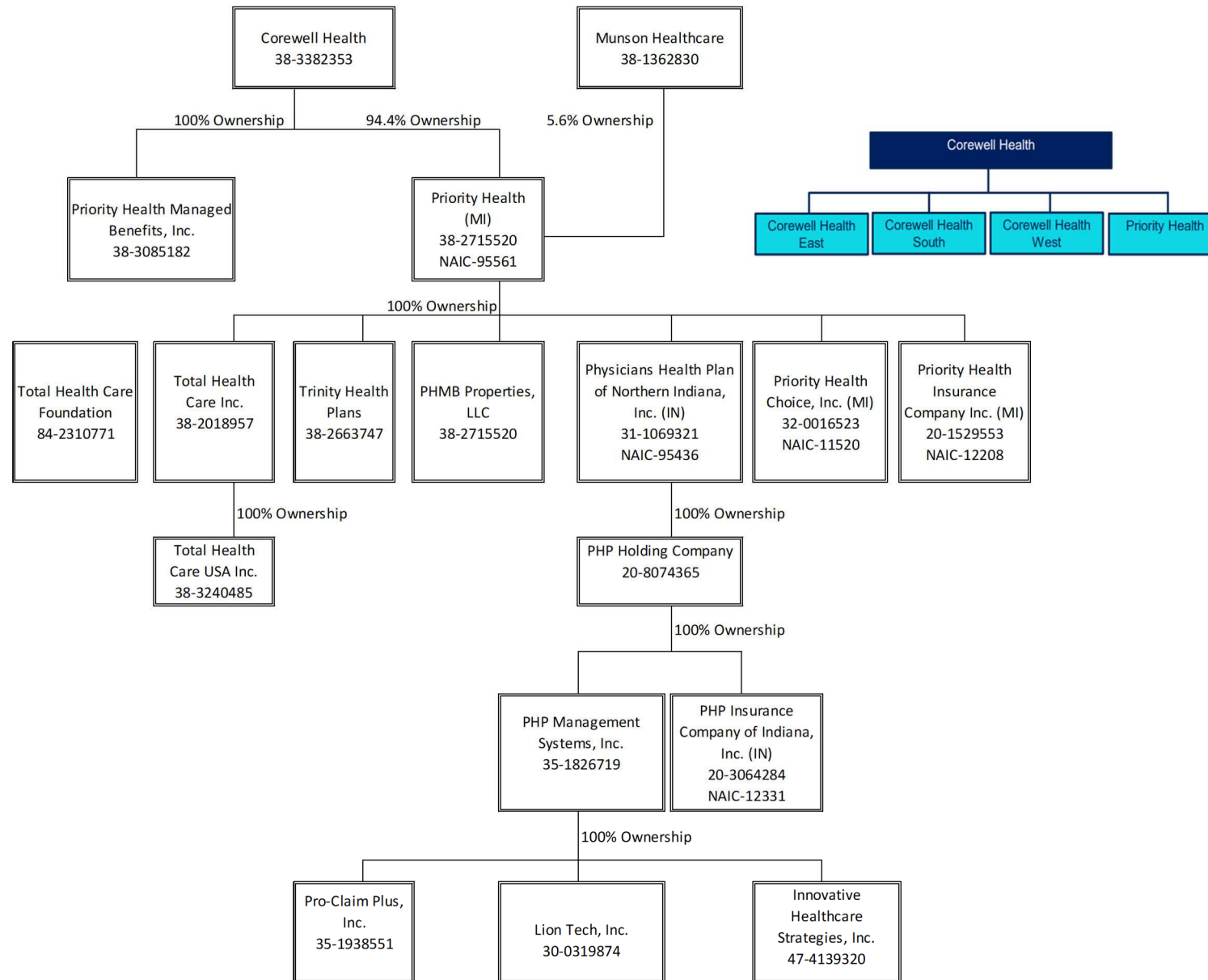
States, etc.	1 Active Status (a)	Direct Business Only									
		2 Accident and Health Premiums	3 Medicare Title XVIII	4 Medicaid Title XIX	5 CHIP Title XXI	6 Federal Employees Health Benefits Program Premiums	7 Life and Annuity Premiums & Other Considerations	8 Property/Casualty Premiums	9 Total Columns 2 Through 8	10 Deposit-Type Contracts	
1. Alabama	AL	N								0	
2. Alaska	AK	N								0	
3. Arizona	AZ	N								0	
4. Arkansas	AR	N								0	
5. California	CA	N								0	
6. Colorado	CO	N								0	
7. Connecticut	CT	N								0	
8. Delaware	DE	N								0	
9. District of Columbia	DC	N								0	
10. Florida	FL	N								0	
11. Georgia	GA	N								0	
12. Hawaii	HI	N								0	
13. Idaho	ID	N								0	
14. Illinois	IL	N								0	
15. Indiana	IN	N								0	
16. Iowa	IA	N								0	
17. Kansas	KS	N								0	
18. Kentucky	KY	N								0	
19. Louisiana	LA	N								0	
20. Maine	ME	N								0	
21. Maryland	MD	N								0	
22. Massachusetts	MA	N								0	
23. Michigan	MI	L	2,239,632,023	2,370,049,964		7,322,290				4,617,004,277	
24. Minnesota	MN	N								0	
25. Mississippi	MS	N								0	
26. Missouri	MO	N								0	
27. Montana	MT	N								0	
28. Nebraska	NE	N								0	
29. Nevada	NV	N								0	
30. New Hampshire	NH	N								0	
31. New Jersey	NJ	N								0	
32. New Mexico	NM	N								0	
33. New York	NY	N								0	
34. North Carolina	NC	N								0	
35. North Dakota	ND	N								0	
36. Ohio	OH	N								0	
37. Oklahoma	OK	N								0	
38. Oregon	OR	N								0	
39. Pennsylvania	PA	N								0	
40. Rhode Island	RI	N								0	
41. South Carolina	SC	N								0	
42. South Dakota	SD	N								0	
43. Tennessee	TN	N								0	
44. Texas	TX	N								0	
45. Utah	UT	N								0	
46. Vermont	VT	N								0	
47. Virginia	VA	N								0	
48. Washington	WA	N								0	
49. West Virginia	WV	N								0	
50. Wisconsin	WI	N								0	
51. Wyoming	WY	N								0	
52. American Samoa	AS	N								0	
53. Guam	GU	N								0	
54. Puerto Rico	PR	N								0	
55. U.S. Virgin Islands	VI	N								0	
56. Northern Mariana Islands	MP	N								0	
57. Canada	CAN	N								0	
58. Aggregate Other Aliens	OT	XXX	0	0	0	0	0	0	0	0	0
59. Subtotal	XXX	2,239,632,023	2,370,049,964	0	0	7,322,290	0	0	4,617,004,277	0	0
60. Reporting Entity Contributions for Employee Benefit Plans	XXX								0		
61. Totals (Direct Business)	XXX	2,239,632,023	2,370,049,964	0	0	7,322,290	0	0	4,617,004,277	0	0
DETAILS OF WRITE-INS											
58001.	XXX										
58002.	XXX										
58003.	XXX										
58998. Summary of remaining write-ins for Line 58 from overflow page	XXX	0	0	0	0	0	0	0	0	0	0
58999. Totals (Lines 58001 through 58003 plus 58998)(Line 58 above)	XXX	0	0	0	0	0	0	0	0	0	0

(a) Active Status Counts:

- 1. L - Licensed or Chartered - Licensed insurance carrier or domiciled RRG..... 1
- 2. R - Registered - Non-domiciled RRGs..... 0
- 3. E - Eligible - Reporting entities eligible or approved to write surplus lines in the state. .... 0
- 4. Q - Qualified - Qualified or accredited reinsurer..... 0
- 5. N - None of the above - Not allowed to write business in the state..... 56

# SCHEDULE Y – INFORMATION CONCERNING ACTIVITIES OF INSURER MEMBERS OF A HOLDING COMPANY GROUP

## PART 1 – ORGANIZATIONAL CHART



STATEMENT AS OF SEPTEMBER 30, 2025 OF THE Priority Health

**SCHEDULE Y**

**PART 1A - DETAILS OF INSURANCE HOLDING COMPANY SYSTEM**

1	2	3	4	5	6	7	8	9	10	11	12	13	14	15	16
Group Code	Group Name	NAIC Company Code	ID Number	Federal RSSD	CIK	Name of Securities Exchange if Publicly Traded (U.S. or International)	Names of Parent, Subsidiaries Or Affiliates	Domi-ciliary Loca-tion	Relation-ship to Reporting Entity	Directly Controlled by (Name of Entity/Person)	Type of Control (Ownership, Board, Management, Attorney-in-Fact, Influence, Other)	If Control is Ownership Provide Percentage	Ultimate Controlling Entity(ies)/Person(s)	Is an SCA Filing Re-quired? (Yes/No)	*
. 3383	Corewell Health Group	95561	38-2715520	0	0		Priority Health	.. MI	..... RE	Corewell Health	Ownership	94.400	Corewell Health	NO	1
				0	0					Munson HealthCare	Ownership	5.600		NO	1
. 3383	Corewell Health Group	11520	32-0016523	0	0		Priority Health Choice, Inc.	.. MI	..... IA	Priority Health	Ownership	100.000	Corewell Health	NO	0
. 3383	Corewell Health Group	12208	20-1529553	0	0		Priority Health Insurance Company	.. MI	..... IA	Priority Health	Ownership	100.000	Corewell Health	NO	0
			38-2018957	0	0		Total Health Care Inc.	.. MI	..... NIA	Priority Health	Ownership	100.000	Corewell Health	NO	0
			38-3240485	0	0		Total Health Care USA Inc.	.. MI	..... NIA	Total Health Care Inc.	Ownership	100.000	Corewell Health	NO	0
			84-2310771	0	0		Total Health Care Foundation	.. MI	..... NIA	Priority Health	Board of Directors		Corewell Health	NO	0
			38-2715520	0	0		PHMB Properties, LLC	.. MI	..... NIA	Priority Health	Ownership	100.000	Corewell Health	NO	0
			38-2663747	0	0		Trinity Health Plans	.. MI	..... NIA	Priority Health	Ownership	100.000	Corewell Health	NO	0
				0	0		Physicians Health Plan of Northern Indiana, Inc.	.. IN	..... IA	Priority Health	Ownership	100.000	Corewell Health	YES	0
. 3383	Corewell Health Group	95436	31-1069321	0	0					Physicians Health Plan of Northern Indiana, Inc.	Ownership	100.000	Corewell Health	NO	0
			20-8074365	0	0		PHP Holding Company	.. IN	..... NIA		Ownership	100.000	Corewell Health	NO	0
. 3383	Corewell Health Group	12331	20-3064284	0	0		PHP Insurance Company of Indiana, Inc.	.. IN	..... IA	PHP Holding Company	Ownership	100.000	Corewell Health	NO	0
			35-1826719	0	0		PHP Management Systems, Inc.	.. IN	..... NIA	PHP Holding Company	Ownership	100.000	Corewell Health	NO	0
			35-1938551	0	0		Pro-Claim Plus, Inc.	.. IN	..... NIA	PHP Management Systems, Inc.	Ownership	100.000	Corewell Health	NO	0
			30-0319874	0	0		Lion Tech, Inc.	.. IN	..... NIA	PHP Management Systems, Inc.	Ownership	100.000	Corewell Health	NO	0
			47-4139320	0	0		Innovative Healthcare Strategies, Inc.	.. IN	..... NIA	PHP Management Systems, Inc.	Ownership	100.000	Corewell Health	NO	0
			38-3085182	0	0		Priority Health Managed Benefits, Inc.	.. MI	..... NIA	Corewell Health	Ownership	100.000	Corewell Health	NO	0
				0	0		Corewell Health Grand Rapids	.. MI	..... NIA	Corewell Health	Ownership	100.000	Corewell Health	NO	0
				0	0		Corewell Health Big Rapids	.. MI	..... NIA	Corewell Health	Ownership	100.000	Corewell Health	NO	0
				0	0		Corewell Health Reed City	.. MI	..... NIA	Corewell Health	Ownership	100.000	Corewell Health	NO	0
				0	0		Corewell Health Gerber	.. MI	..... NIA	Corewell Health	Ownership	100.000	Corewell Health	NO	0
				0	0		Corewell Health Ludington	.. MI	..... NIA	Corewell Health	Ownership	100.000	Corewell Health	NO	0
				0	0		Corewell Health Pennock	.. MI	..... NIA	Corewell Health	Ownership	100.000	Corewell Health	NO	0
				0	0		Corewell Health Greenville	.. MI	..... NIA	Corewell Health	Ownership	100.000	Corewell Health	NO	0
				0	0		Corewell Health Kelsey	.. MI	..... NIA	Corewell Health	Ownership	100.000	Corewell Health	NO	0
				0	0		Corewell Health Zeeland	.. MI	..... NIA	Corewell Health	Ownership	100.000	Corewell Health	NO	0
				0	0		Corewell Health West - Continuing Care	.. MI	..... NIA	Corewell Health	Ownership	100.000	Corewell Health	NO	0
				0	0		Corewell Health Medical Group West	.. MI	..... NIA	Corewell Health	Ownership	100.000	Corewell Health	NO	0
				0	0		Corewell Health South	.. MI	..... NIA	Corewell Health	Ownership	100.000	Corewell Health	NO	0
				0	0		Corewell Health East	.. MI	..... NIA	Corewell Health	Ownership	100.000	Corewell Health	NO	0

Asterisk	Explanation
1	Corewell Health (EIN 38-3382353), Class A Shareholder - 94.4%; Munson Healthcare (EIN 38-1362830), Class B Shareholder - 5.6%

# SUPPLEMENTAL EXHIBITS AND SCHEDULES INTERROGATORIES

The following supplemental reports are required to be filed as part of your statement filing. However, in the event that your company does not transact the type of business for which the special report must be filed, your response of NO to the specific interrogatory will be accepted in lieu of filing a "NONE" report and a bar code will be printed below. If the supplement is required of your company but is not being filed for whatever reason enter SEE EXPLANATION and provide an explanation following the interrogatory questions.

	Response
1. Will the Medicare Part D Coverage Supplement be filed with the state of domicile and the NAIC with this statement? .....	NO

**AUGUST FILING**

2. Will the regulator-only (non-public) Communication of Internal Control Related Matters Noted in Audit be filed with the state of domicile and electronically with the NAIC (as a regulator-only non-public document) by August 1? The response for 1st and 3rd quarters should be N/A. A NO response resulting with a bar code is only appropriate in the 2nd quarter. ....	N/A
--	-----

Explanation:

1. The data for this supplement is not required to be filed.

Bar Code:

1. Medicare Part D Coverage Supplement [Document Identifier 365]



**NONE**

STATEMENT AS OF SEPTEMBER 30, 2025 OF THE Priority Health

**SCHEDULE A - VERIFICATION**

Real Estate

	1 Year to Date	2 Prior Year Ended December 31
1. Book/adjusted carrying value, December 31 of prior year .....		
2. Cost of acquired:		
2.1 Actual cost at time of acquisition .....		
2.2 Additional investment made after acquisition .....		
3. Current year change in encumbrances .....		
4. Total gain (loss) on disposals .....		
5. Deduct amounts received on disposals .....		
6. Total foreign exchange change in book/adjusted carrying value .....		
7. Deduct current year's other than temporary impairment recognized .....		
8. Deduct current year's depreciation .....		
9. Book/adjusted carrying value at the end of current period (Lines 1+2+3+4-5+6-7-8) .....		
10. Deduct total nonadmitted amounts .....		
11. Statement value at end of current period (Line 9 minus Line 10)		

**NONE**

**SCHEDULE B - VERIFICATION**

Mortgage Loans

	1 Year to Date	2 Prior Year Ended December 31
1. Book value/recorded investment excluding accrued interest, December 31 of prior year .....		
2. Cost of acquired:		
2.1 Actual cost at time of acquisition .....		
2.2 Additional investment made after acquisition .....		
3. Capitalized deferred interest and other .....		
4. Accrual of discount .....		
5. Unrealized valuation increase/(decrease) .....		
6. Total gain (loss) on disposals .....		
7. Deduct amounts received on disposals .....		
8. Deduct amortization of premium and mortgage interest paid and commitment fees .....		
9. Total foreign exchange change in book value/recorded investment excluding accrued interest .....		
10. Deduct current year's other than temporary impairment recognized .....		
11. Book value/recorded investment excluding accrued interest at end of current period (Lines 1+2+3+4+5+6-7-8+9-10) .....		
12. Total valuation allowance .....		
13. Subtotal (Line 11 plus Line 12) .....		
14. Deduct total nonadmitted amounts .....		
15. Statement value at end of current period (Line 13 minus Line 14)		

**NONE**

**SCHEDULE BA - VERIFICATION**

Other Long-Term Invested Assets

	1 Year to Date	2 Prior Year Ended December 31
1. Book/adjusted carrying value, December 31 of prior year .....	6,700,000	6,700,000
2. Cost of acquired:		
2.1 Actual cost at time of acquisition .....		
2.2 Additional investment made after acquisition .....		
3. Capitalized deferred interest and other .....		0
4. Accrual of discount .....		0
5. Unrealized valuation increase/(decrease) .....		0
6. Total gain (loss) on disposals .....		
7. Deduct amounts received on disposals .....		
8. Deduct amortization of premium, depreciation and proportional amortization .....		0
9. Total foreign exchange change in book/adjusted carrying value .....		0
10. Deduct current year's other than temporary impairment recognized .....		0
11. Book/adjusted carrying value at end of current period (Lines 1+2+3+4+5+6-7-8+9-10) .....	6,700,000	6,700,000
12. Deduct total nonadmitted amounts .....	6,700,000	6,700,000
13. Statement value at end of current period (Line 11 minus Line 12)	0	0

**SCHEDULE D - VERIFICATION**

Bonds and Stocks

	1 Year to Date	2 Prior Year Ended December 31
1. Book/adjusted carrying value of bonds and stocks, December 31 of prior year .....	1,310,878,785	1,245,804,412
2. Cost of bonds and stocks acquired .....	147,917,227	208,372,123
3. Accrual of discount .....	1,722,594	2,043,710
4. Unrealized valuation increase/(decrease) .....	89,685,577	4,270,371
5. Total gain (loss) on disposals .....	10,227,555	12,226,149
6. Deduct consideration for bonds and stocks disposed of .....	129,677,585	160,540,870
7. Deduct amortization of premium .....	888,097	1,309,382
8. Total foreign exchange change in book/adjusted carrying value .....	0	
9. Deduct current year's other than temporary impairment recognized .....	0	
10. Total investment income recognized as a result of prepayment penalties and/or acceleration fees .....	0	12,272
11. Book/adjusted carrying value at end of current period (Lines 1+2+3+4+5-6-7+8-9+10) .....	1,429,866,056	1,310,878,785
12. Deduct total nonadmitted amounts .....	0	5,751
13. Statement value at end of current period (Line 11 minus Line 12)	1,429,866,056	1,310,873,034

STATEMENT AS OF SEPTEMBER 30, 2025 OF THE Priority Health

**SCHEDULE D - PART 1B**

Showing the Acquisitions, Dispositions and Non-Trading Activity  
During the Current Quarter for all Bonds and Preferred Stock by NAIC Designation

NAIC Designation	1 Book/Adjusted Carrying Value Beginning of Current Quarter	2 Acquisitions During Current Quarter	3 Dispositions During Current Quarter	4 Non-Trading Activity During Current Quarter	5 Book/Adjusted Carrying Value End of First Quarter	6 Book/Adjusted Carrying Value End of Second Quarter	7 Book/Adjusted Carrying Value End of Third Quarter	8 Book/Adjusted Carrying Value December 31 Prior Year
<b>ISSUER CREDIT OBLIGATIONS (ICO)</b>								
1. NAIC 1 (a) .....	700,356,761	201,773,601	185,076,528	3,233,467	682,983,848	700,356,761	720,287,301	681,320,794
2. NAIC 2 (a) .....	110,295,838	10,137,347	20,404,255	(721,967)	104,115,514	110,295,838	99,306,963	99,922,340
3. NAIC 3 (a) .....	981,367	0	0	14,408	1,000,497	981,367	995,775	412,455
4. NAIC 4 (a) .....	0	0	0	0	0	0	0	0
5. NAIC 5 (a) .....	0	0	0	0	0	0	0	0
6. NAIC 6 (a) .....	0	0	0	0	0	0	0	0
7. Total ICO	811,633,966	211,910,948	205,480,783	2,525,908	788,099,859	811,633,966	820,590,039	781,655,589
<b>ASSET-BACKED SECURITIES (ABS)</b>								
8. NAIC 1 .....	221,033,376	13,899,433	9,080,169	136,929	223,349,175	221,033,376	225,989,569	220,501,461
9. NAIC 2 .....	315,914	0	13,685	0	372,718	315,914	302,229	470,466
10. NAIC 3 .....	0	0	0	0	0	0	0	0
11. NAIC 4 .....	267,551	0	8,323	(1,341)	273,495	267,551	257,887	272,885
12. NAIC 5 .....	0	0	0	0	0	0	0	0
13. NAIC 6 .....	0	0	0	0	0	0	0	0
14. Total ABS	221,616,841	13,899,433	9,102,177	135,588	223,995,388	221,616,841	226,549,685	221,244,812
<b>PREFERRED STOCK</b>								
15. NAIC 1 .....	0	0	0	0	0	0	0	0
16. NAIC 2 .....	0	0	0	0	0	0	0	0
17. NAIC 3 .....	0	0	0	0	0	0	0	0
18. NAIC 4 .....	0	0	0	0	0	0	0	0
19. NAIC 5 .....	0	0	0	0	0	0	0	0
20. NAIC 6 .....	0	0	0	0	0	0	0	0
21. Total Preferred Stock	0	0	0	0	0	0	0	0
22. Total ICO, ABS & Preferred Stock	1,033,250,807	225,810,381	214,582,960	2,661,496	1,012,095,247	1,033,250,807	1,047,139,724	1,002,900,401

(a) Book/Adjusted Carrying Value column for the end of the current reporting period includes the following amount of short-term and cash equivalent bonds by NAIC designation:

NAIC 1 \$ 354,893,034 ; NAIC 2 \$ 16,944,922 ; NAIC 3 \$ 0 ; NAIC 4 \$ 0 ; NAIC 5 \$ 0 ; NAIC 6 \$ 0

S102

STATEMENT AS OF SEPTEMBER 30, 2025 OF THE Priority Health

**SCHEDULE DA - PART 1**

Short-Term Investments

	1	2	3	4	5
	Book/Adjusted Carrying Value	Par Value	Actual Cost	Interest Collected Year-to-Date	Paid for Accrued Interest Year-to-Date
7709999999 Totals	349,915,643	xxx	346,854,645	1,526,864	306,290

**SCHEDULE DA - VERIFICATION**

Short-Term Investments

	1	2
	Year To Date	Prior Year Ended December 31
1. Book/adjusted carrying value, December 31 of prior year .....	355,244,213	334,711,498
2. Cost of short-term investments acquired .....	360,221,426	449,861,538
3. Accrual of discount .....	6,834,543	12,360,188
4. Unrealized valuation increase/(decrease) .....	0	0
5. Total gain (loss) on disposals .....	(61)	1,968
6. Deduct consideration received on disposals .....	372,229,015	441,659,290
7. Deduct amortization of premium .....	155,458	31,689
8. Total foreign exchange change in book/adjusted carrying value .....	0	0
9. Deduct current year's other than temporary impairment recognized .....	0	0
10. Book/adjusted carrying value at end of current period (Lines 1+2+3+4+5-6-7+8-9) .....	349,915,648	355,244,213
11. Deduct total nonadmitted amounts .....	0	0
12. Statement value at end of current period (Line 10 minus Line 11)	349,915,648	355,244,213

Schedule DB - Part A - Verification - Options, Caps, Floors, Collars, Swaps and Forwards

**N O N E**

Schedule DB - Part B - Verification - Futures Contracts

**N O N E**

Schedule DB - Part C - Section 1 - Replication (Synthetic Asset) Transactions (RSATs) Open

**N O N E**

Schedule DB-Part C-Section 2-Reconciliation of Replication (Synthetic Asset) Transactions Open

**N O N E**

Schedule DB - Verification - Book/Adjusted Carrying Value, Fair Value and Potential Exposure of  
Derivatives

**N O N E**

STATEMENT AS OF SEPTEMBER 30, 2025 OF THE Priority Health  
**SCHEDULE E - PART 2 - VERIFICATION**  
(Cash Equivalents)

	1	2
	Year To Date	Prior Year Ended December 31
1. Book/adjusted carrying value, December 31 of prior year .....	305,127,915	218,781,112
2. Cost of cash equivalents acquired .....	4,977,808,240	6,306,082,361
3. Accrual of discount .....	617,770	463,143
4. Unrealized valuation increase/(decrease) .....	0	0
5. Total gain (loss) on disposals .....	418	232
6. Deduct consideration received on disposals .....	4,931,745,666	6,220,198,933
7. Deduct amortization of premium .....	484	0
8. Total foreign exchange change in book/adjusted carrying value .....	0	0
9. Deduct current year's other than temporary impairment recognized .....	0	0
10. Book/adjusted carrying value at end of current period (Lines 1+2+3+4+5-6-7+8-9) .....	351,808,193	305,127,915
11. Deduct total nonadmitted amounts .....	0	0
12. Statement value at end of current period (Line 10 minus Line 11)	351,808,193	305,127,915

Schedule A - Part 2 - Real Estate Acquired and Additions Made

**N O N E**

Schedule A - Part 3 - Real Estate Disposed

**N O N E**

Schedule B - Part 2 - Mortgage Loans Acquired and Additions Made

**N O N E**

Schedule B - Part 3 - Mortgage Loans Disposed, Transferred or Repaid

**N O N E**

Schedule BA - Part 2 - Other Long-Term Invested Assets Acquired and Additions Made

**N O N E**

Schedule BA - Part 3 - Other Long-Term Invested Assets Disposed, Transferred or Repaid

**N O N E**

STATEMENT AS OF SEPTEMBER 30, 2025 OF THE Priority Health

**SCHEDULE D - PART 3**

Show All Long-Term Bonds and Stock Acquired During the Current Quarter

1	2	3	4	5	6	7	8	9
CUSIP Identification	Description	Date Acquired	Name of Vendor	Number of Shares of Stock	Actual Cost	Par Value	Paid for Accrued Interest and Dividends	NAIC Designation, NAIC Designation Modifier and SVO Administrative Symbol
912810-SQ-2	US TREASURY N/B	09/30/2025	NORTHERN TRUST		693,945	1,100,000	1,581	1.A
912810-TA-6	US TREASURY N/B	07/31/2025	NORTHERN TRUST		131,750	200,000	1,615	1.A
912810-TX-6	US TREASURY N/B	09/30/2025	NORTHERN TRUST		1,061,552	1,175,000	10,228	1.A
912810-UB-2	US TREASURY N/B	07/25/2025	NORTHERN TRUST		1,255,719	1,300,000	12,090	1.A
91282C-EP-2	US TREASURY N/B	07/25/2025	NORTHERN TRUST		2,634,715	2,850,000	16,090	1.A
91282C-HT-1	US TREASURY N/B	09/30/2025	NORTHERN TRUST		982,633	1,000,000	12,705	1.A
91282C-JM-4	US TREASURY N/B	07/31/2025	NORTHERN TRUST		203,641	200,000	1,482	1.A
91282C-MM-0	US TREASURY N/B	09/17/2025	NORTHERN TRUST		758,634	725,000	2,686	1.A
91282C-MW-8	US TREASURY N/B	07/31/2025	NORTHERN TRUST		3,363,724	3,375,000	36,619	1.A
91282C-NJ-6	US TREASURY N/B	09/30/2025	NORTHERN TRUST		1,703,527	1,700,000	11,065	1.A
91282C-NU-1	US TREASURY N/B	09/30/2025	NORTHERN TRUST		2,401,305	2,400,000	9,112	1.A
91282C-NX-5	US TREASURY N/B	09/04/2025	TDU		2,996,836	3,000,000	1,502	1.A
<b>0019999999. Subtotal - Issuer Credit Obligations - U.S. Government Obligations (Exempt from RBC)</b>					18,187,981	19,025,000	116,775	XXX
02005N-BW-9	ALLY FINL INC	07/28/2025	NORTHERN TRUST		557,051	550,000	1,016	2.C FE
02771D-2A-1	AMERICAN NATIONAL GLBL FNDG	07/29/2025	NORTHERN TRUST		713,664	700,000	216	1.F FE
161175-CS-1	CHARTER COMM OPT LLC/CAP	08/18/2025	NORTHERN TRUST		249,830	250,000	0	2.C FE
17275R-BY-7	CISCO SYS INC	07/22/2025	SUS		1,023,960	1,000,000	20,488	1.E FE
251526-DB-2	DEUTSCHE BK NY	07/28/2025	NORTHERN TRUST		1,000,000	1,000,000	0	2.A FE
30303M-9A-2	PROJECT BEIGNET	09/25/2025	NORTHERN TRUST		2,100,000	2,100,000	0	1.E FE
491674-BP-1	KENTUCKY UTILS CO	08/04/2025	NORTHERN TRUST		599,826	600,000	0	1.F FE
61776N-VE-0	MORGAN STANLEY BK NA	07/17/2025	NORTHERN TRUST		500,000	500,000	0	1.D FE
62915W-2B-8	NLG GLOBAL FUNDING	09/11/2025	NORTHERN TRUST		573,517	575,000	69	1.E FE
68389X-DK-8	ORACLE CORP	09/24/2025	NORTHERN TRUST		699,755	700,000	0	2.B FE
745310-AQ-5	PUGET ENERGY INC	07/09/2025	EXCHANGE		700,000	700,000	12,913	2.C FE
67077M-BF-4	NUTRIEN LTD	07/22/2025	SUS		1,019,420	1,000,000	18,958	2.B FE
06279J-AD-1	BANK OF IRELAND GROUP PLC	09/11/2025	NORTHERN TRUST		1,173,218	1,125,000	30,105	1.G FE
11272B-AA-1	BROOKFIELD FIN INC	07/22/2025	JP MORGAN		856,870	1,000,000	11,245	1.G FE
62954W-AQ-8	MITT FINANCE CORP	07/09/2025	NORTHERN TRUST		200,000	200,000	0	1.G FE
<b>0089999999. Subtotal - Issuer Credit Obligations - Corporate Bonds (Unaffiliated)</b>					11,967,111	12,000,000	95,010	XXX
<b>0489999999. Total - Issuer Credit Obligations (Unaffiliated)</b>					30,155,092	31,025,000	211,785	XXX
<b>0499999999. Total - Issuer Credit Obligations (Affiliated)</b>					0	0	0	XXX
<b>0509999997. Total - Issuer Credit Obligations - Part 3</b>					30,155,092	31,025,000	211,785	XXX
<b>0509999998. Total - Issuer Credit Obligations - Part 5</b>					XXX	XXX	XXX	XXX
<b>0509999999. Total - Issuer Credit Obligations</b>					30,155,092	31,025,000	211,785	XXX
3140W0-DP-7	FINMA #FA0109	08/12/2025	NORTHERN TRUST		451,848	493,654	576	1.A
3140W2-F8-9	FINMA #FA1990	09/30/2025	NORTHERN TRUST		453,920	438,405	0	1.A
3140W2-SB-8	FINMA #FA2313	08/01/2025	NORTHERN TRUST		462,054	447,814	224	1.A
31418B-3S-3	FINMA #MA2608	07/31/2025	NORTHERN TRUST		458,261	519,276	519	1.A
31418E-BJ-8	FINMA #MA4540	07/09/2025	NORTHERN TRUST		649,712	769,246	556	1.A
<b>1039999999. Subtotal - Asset-Backed Securities - Financial Asset-Backed - Self-Liquidating - Agency Residential Mortgage-Backed Securities - Not/Partially Guaranteed (Not Exempt from RBC)</b>					2,475,795	2,668,395	1,875	XXX
10570T-AP-0	BRAVO 2025-NQM7 A1	07/29/2025	NORTHERN TRUST		674,994	675,000	3,582	1.A FE
<b>1059999999. Subtotal - Asset-Backed Securities - Financial Asset-Backed - Self-Liquidating - Non-Agency Residential Mortgage-Backed Securities (Unaffiliated)</b>					674,994	675,000	3,582	XXX
08193A-AQ-4	BMARK 2025-V17 A2	09/11/2025	NORTHERN TRUST		400,000	400,000	1,356	1.A FE
09660W-AT-8	BMO 2024-5C7 A2	08/20/2025	NORTHERN TRUST		459,123	450,000	1,273	1.A FE
<b>1079999999. Subtotal - Asset-Backed Securities - Financial Asset-Backed - Self-Liquidating - Non-Agency Commercial Mortgage-Backed Securities (Unaffiliated)</b>					859,123	850,000	2,629	XXX
34533B-AA-8	FORDR 2024-1 A	08/13/2025	BSF		1,533,867	1,500,000	5,885	1.A FE
41284X-AE-8	HDMOT 2025-A A4	08/13/2025	WAC		1,532,754	1,500,000	5,788	1.A FE
44935J-AE-6	HART 2025-C A4	09/09/2025	CIG		824,861	825,000	0	1.A FE
47800U-AE-6	JDOT 2025-B A4	08/13/2025	BSF		1,514,180	1,500,000	4,883	1.A FE
64035U-AA-6	NSLT 2025-CA A1A	09/12/2025	NORTHERN TRUST		599,985	600,000	0	1.A FE
89231J-AA-0	TALNT 2024-1A A	08/13/2025	USB		1,552,090	1,500,000	4,085	1.A FE
92348K-DJ-9	VZMT 2024-7 A	08/13/2025	BSF		1,506,914	1,500,000	4,350	1.A FE
92868B-AD-5	VWALT 2025-B A3	09/09/2025	NORTHERN TRUST		824,870	825,000	0	1.A FE

E04

STATEMENT AS OF SEPTEMBER 30, 2025 OF THE Priority Health

**SCHEDULE D - PART 3**

Show All Long-Term Bonds and Stock Acquired During the Current Quarter

1	2	3	4	5	6	7	8	9
CUSIP Identification	Description	Date Acquired	Name of Vendor	Number of Shares of Stock	Actual Cost	Par Value	Paid for Accrued Interest and Dividends	NAIC Designation, NAIC Designation Modifier and SVO Administrative Symbol
1119999999	Subtotal - Asset-Backed Securities - Financial Asset-Backed - Self-Liquidating - Other Financial Asset-Backed Securities - Self-Liquidating (Unaffiliated)				9,889,521	9,750,000	24,991	XXX
1889999999	Total - Asset-Backed Securities (Unaffiliated)				13,899,433	13,943,395	33,077	XXX
1899999999	Total - Asset-Backed Securities (Affiliated)				0	0	0	XXX
1909999997	Total - Asset-Backed Securities - Part 3				13,899,433	13,943,395	33,077	XXX
1909999998	Total - Asset-Backed Securities - Part 5				XXX	XXX	XXX	XXX
1909999999	Total - Asset-Backed Securities				13,899,433	13,943,395	33,077	XXX
2009999999	Total - Issuer Credit Obligations and Asset-Backed Securities				44,054,525	44,968,395	244,862	XXX
4509999997	Total - Preferred Stocks - Part 3				0	XXX	0	XXX
4509999998	Total - Preferred Stocks - Part 5				XXX	XXX	XXX	XXX
4509999999	Total - Preferred Stocks				0	XXX	0	XXX
315911-75-0	FIDELITY 500 INDX FD	07/14/2025	DIVIDEND REINVESTMENT	1,240,560	269,760		0	
72201F-49-0	PIMCO INC FD-INS	09/30/2025	VARIOUS	746,697,530	8,023,495		0	
922908-87-6	VANGUARD SMALL CAP IX FD	09/30/2025	DIVIDEND REINVESTMENT	528,440	64,343		0	
5329999999	Subtotal - Common Stocks - Mutual Funds - Designations Not Assigned by the SVO				8,357,598	XXX	0	XXX
5989999997	Total - Common Stocks - Part 3				8,357,598	XXX	0	XXX
5989999998	Total - Common Stocks - Part 5				XXX	XXX	XXX	XXX
5989999999	Total - Common Stocks				8,357,598	XXX	0	XXX
5999999999	Total - Preferred and Common Stocks				8,357,598	XXX	0	XXX
6009999999	Totals				52,412,123	XXX	244,862	XXX

STATEMENT AS OF SEPTEMBER 30, 2025 OF THE Priority Health

**SCHEDULE D - PART 4**

Show All Long-Term Bonds and Stock Sold, Redeemed or Otherwise Disposed of During the Current Quarter

1	2	3	4	5	6	7	8	9	Change In Book/Adjusted Carrying Value					15	16	17	18	19	20	21	
									10	11	12	13	14								
CUSIP Identification	Description	Disposal Date	Name of Purchaser	Number of Shares of Stock	Consideration	Par Value	Actual Cost	Prior Year Book/ Adjusted Carrying Value	Unrealized Valuation Increase/ (Decrease)	Current Year's (Amortization)/ Accretion	Current Year's Other Than Temporary Impairment Recognized	Total Change in Book/ Adjusted Carrying Value (10 + 11 - 12)	Total Foreign Exchange Change in Book /Adjusted Carrying Value	Book/ Adjusted Carrying Value at Disposal Date	Foreign Exchange Gain (Loss) on Disposal	Realized Gain (Loss) on Disposal	Total Gain (Loss) on Disposal	Bond Interest/ Stock Dividends Received During Year	Stated Contractual Maturity Date	NAIC Designation, NAIC Designation Modifier and SVO Administrative Symbol	
..912810-SP-4	US TREASURY N/B	08/04/2025	NORTHERN TRUST		12,363	25,000	14,393	14,857	0	139	0	139	0	14,997	0	(2,634)	(2,634)	334	08/15/2050	1.A	
..912810-TG-3	US TREASURY N/B	08/04/2025	NORTHERN TRUST		475,585	675,000	566,999	570,522	0	1,310	0	1,310	0	571,832	0	(96,247)	(96,247)	14,027	05/15/2052	1.A	
..912810-TX-6	US TREASURY N/B	09/09/2025	NORTHERN TRUST		416,777	450,000	416,988	0	0	227	0	227	0	417,215	0	(438)	(438)	10,914	02/15/2054	1.A	
..912828-M5-6	US TREASURY N/B	08/13/2025	RBD		1,492,383	1,500,000	1,503,691	1,500,357	0	(253)	0	(253)	0	1,500,104	0	(7,721)	(7,721)	25,221	11/15/2025	1.A	
..91282C-AV-3	US TREASURY N/B	08/13/2025	NAI		3,967,320	4,600,000	3,703,180	3,825,468	0	73,040	0	73,040	0	3,898,508	0	68,812	68,812	30,078	11/15/2030	1.A	
..91282C-BQ-3	US TREASURY N/B	08/13/2025	J.P. MORGAN		980,977	1,000,000	989,961	997,638	0	1,248	0	1,248	0	998,886	0	(17,909)	(17,909)	4,769	02/28/2026	1.A	
..91282C-BT-7	US TREASURY N/B	08/13/2025	NAI		2,449,609	2,500,000	2,477,637	2,494,334	0	2,797	0	2,797	0	2,497,131	0	(47,522)	(47,522)	16,342	03/31/2026	1.A	
..91282C-DJ-7	US TREASURY N/B	07/09/2025	NORTHERN TRUST		636,621	750,000	637,852	643,031	0	7,211	0	7,211	0	650,243	0	(13,621)	(13,621)	6,728	11/15/2031	1.A	
..91282C-DY-4	US TREASURY N/B	08/12/2025	NORTHERN TRUST		483,334	550,000	466,430	467,371	0	6,190	0	6,190	0	473,560	0	9,774	9,774	10,256	02/15/2032	1.A	
..91282C-FT-3	US TREASURY N/B	08/13/2025	GOL		3,031,992	3,000,000	2,954,297	2,960,111	0	4,652	0	4,652	0	2,964,763	0	67,229	67,229	94,565	10/31/2029	1.A	
..91282C-FZ-9	US TREASURY N/B	09/09/2025	NORTHERN TRUST		1,330,439	1,325,000	1,315,270	1,315,802	0	1,927	0	1,927	0	1,317,729	0	12,710	12,710	37,313	11/30/2027	1.A	
..91282C-GB-1	US TREASURY N/B	08/01/2025	NORTHERN TRUST		3,520,665	3,525,000	3,460,817	3,471,779	0	5,643	0	5,643	0	3,477,422	0	43,243	43,243	79,648	12/31/2029	1.A	
..91282C-HI-4	US TREASURY N/B	09/11/2025	NORTHERN TRUST		562,998	550,000	526,435	529,962	0	2,166	0	2,166	0	532,128	0	30,870	30,870	23,440	08/31/2030	1.A	
..91282C-JM-4	US TREASURY N/B	09/11/2025	NORTHERN TRUST		362,387	350,000	352,693	352,693	0	(132)	0	(132)	0	352,562	0	9,825	9,825	12,007	11/30/2030	1.A	
..91282C-JX-0	US TREASURY N/B	08/20/2025	NORTHERN TRUST		352,311	350,000	343,014	343,489	0	606	0	606	0	344,095	0	8,215	8,215	14,799	01/31/2031	1.A	
..91282C-MF-5	US TREASURY N/B	09/11/2025	NORTHERN TRUST		1,652,231	1,625,000	1,623,667	0	0	293	0	293	0	1,623,960	0	28,271	28,271	45,604	02/15/2028	1.A	
..91282C-MM-0	US TREASURY N/B	08/18/2025	NORTHERN TRUST		230,599	225,000	226,723	0	0	(23)	0	(23)	0	226,699	0	3,899	3,899	5,316	02/15/2035	1.A	
..91282C-MW-8	US TREASURY N/B	09/30/2025	NORTHERN TRUST		526,784	525,000	523,421	0	0	116	0	116	0	523,537	0	3,247	3,247	9,091	04/15/2028	1.A	
<b>0019999999. Subtotal - Issuer Credit Obligations - U.S. Government Obligations (Exempt from RBC)</b>					22,485,375	23,525,000	22,103,468	19,134,721	0	107,157	0	107,157	0	22,385,371	0	100,003	100,003	440,450	XXX	XXX	
..19648G-ER-9	COLORADO HSG & FIN SF MTGE REV	09/02/2025	CALL at 100.000		50,000	50,000	51,037	51,003	0	(63)	0	(63)	0	50,941	0	(941)	(941)	2,438	11/01/2053	1.A FE	
..85732P-CE-8	STATE PUB SCH BLDG AUTH PA	09/15/2025	SINK		2,000	2,000	2,000	2,000	0	0	0	0	0	2,000	0	0	0	102	09/15/2029	1.D FE	
<b>0059999999. Subtotal - Issuer Credit Obligations - Municipal Bonds - Special Revenues</b>					52,000	52,000	53,037	53,003	0	(63)	0	(63)	0	52,941	0	(941)	(941)	2,540	XXX	XXX	
..02377B-AB-2	AMERICAN AIRLINES 15-2 AA PTT	09/22/2025	SINK		11,850	11,850	12,137	11,882	0	(32)	0	(32)	0	11,850	0	0	0	427	03/22/2029	1.F FE	
..02378A-AA-5	AMERICAN AIRLINES 17-1 A PT	08/15/2025	SINK		14,250	14,250	14,401	14,250	0	(13)	0	(13)	0	14,250	0	0	0	570	08/15/2030	2.B FE	
..06051G-GA-1	BANK OF AMER CORP	07/03/2025	NORTHERN TRUST		465,415	475,000	494,652	480,527	0	(1,556)	0	(1,556)	0	478,971	0	(13,556)	(13,556)	10,971	10/21/2027	1.G FE	
..11043X-AA-1	BRITISH AIR 19-1 AA PT	09/15/2025	SINK		3,091	3,091	3,126	3,094	0	(2)	0	(2)	0	3,091	0	0	0	77	06/15/2034	1.D FE	
..126650-BP-4	CVS PASS-THRU TRST	09/10/2025	SINK		16,786	16,786	17,170	16,793	0	(7)	0	(7)	0	16,786	0	0	0	676	12/10/2028	2.B FE	
..12665U-AA-2	CVS PASS-THRU TRST	09/10/2025	SINK		2,788	2,788	2,788	2,788	0	0	0	0	0	2,788	0	0	0	87	01/10/2036	2.C FE	
..14448C-AP-9	CARRIER GLOB CORP	08/26/2025	NORTHERN TRUST		708,615	725,000	725,000	725,000	0	0	0	0	0	725,000	0	(16,385)	(16,385)	18,677	02/15/2027	2.A FE	
..161175-AY-0	CHARTER COMM OPT LLC/CAP	07/23/2025	MATURITY		133,000	133,000	101,617	116,705	0	16,295	0	16,295	0	133,000	0	0	0	6,528	07/23/2025	2.C FE	
..172967-LS-8	CITIGROUP INC	07/03/2025	NORTHERN TRUST		733,830	750,000	736,980	745,204	0	841	0	841	0	746,045	0	(12,215)	(12,215)	18,333	10/27/2028	1.G FE	
..24703T-AD-8	DELL INT LLC/EMC CORP	09/24/2025	CALL at 100.000		74,000	74,000	78,346	75,198	0	(755)	0	(755)	0	74,444	0	(444)	(444)	3,613	06/15/2026	2.B FE	
..745310-AP-7	PUGET ENERGY INC	07/09/2025	EXCHANGE		700,000	700,000	700,000	700,000	0	0	0	0	0	700,000	0	0	0	12,913	03/15/2035	2.C FE	
..90931L-AA-6	UNITED AIR 2016-1 AA P	07/07/2025	SINK		18,468	18,468	18,204	18,437	0	31	0	31	0	18,468	0	0	0	573	07/07/2028	1.F FE	
..90932W-AA-1	UNITED AIR 2024-1 AA PTT	08/15/2025	SINK		15,466	15,466	15,466	15,466	0	0	0	0	0	15,466	0	0	0	866	08/15/2038	1.D FE	
..91412N-AK-6	UNIVERSITY CHICAGO IL	09/23/2025	CALL at 100.000		178,000	178,000	177,986	178,000	0	0	0	0	0	178,000	0	0	0	7,677	10/01/2044	1.C FE	
..009090-AA-9	AIR CANADA 2015-1A PTT	09/15/2025	SINK		9,650	9,650	9,923	9,681	0	(31)	0	(31)	0	9,650	0	0	0	347	03/15/2027	1.F FE	
..00080Q-AF-2	ABN AMRO BK NV	07/28/2025	MATURITY		1,175,000	1,175,000	1,226,508	1,180,259	0	(5,259)	0	(5,259)	0	1,175,000	0	0	0	55,813	07/28/2025	2.B FE	
..05401A-AR-2	AVOLON HOLDINGS FNDG LTD	09/23/2025	TENDER OFFER		15,457	16,000	18,968	17,337	0	(349)	0	(349)	0	16,987	0	(1,530)	(1,530)	342	11/18/2027	2.B FE	
..853254-CG-3	STANDARD CHARTERED PLC	07/03/2025	NORTHERN TRUST		484,985	500,000	500,000	500,000	0	0	0	0	0	500,000	0	(15,015)	(15,015)	12,859	01/12/2028	1.G FE	
<b>0089999999. Subtotal - Issuer Credit Obligations - Corporate Bonds (Unaffiliated)</b>					4,760,651	4,818,349	4,853,272	4,110,634	0	9,163	0	9,163	0	4,819,796	0	(59,145)	(59,145)	151,349	XXX	XXX	
<b>0489999999. Total - Issuer Credit Obligations (Unaffiliated)</b>					27,298,026	28,395,349	27,009,777	23,298,358	0	116,257	0	116,257	0	27,258,108	0	39,917	39,917	594,339	XXX	XXX	
<b>0499999999. Total - Issuer Credit Obligations (Affiliated)</b>					0	0	0	0	0	0	0	0	0	0	0	0	0	0	0	XXX	XXX
<b>0509999997. Total - Issuer Credit Obligations - Part 4</b>					27,298,026	28,395,349	27,009,777	23,298,358	0	116,257	0	116,257	0	27,258,108	0	39,917	39,917	594,339	XXX	XXX	
<b>0509999998. Total - Issuer Credit Obligations - Part 5</b>					XXX	XXX	XXX	XXX	XXX	XXX	XXX	XXX	XXX	XXX	XXX	XXX	XXX	XXX	XXX	XXX	XXX
<b>0509999999. Total - Issuer Credit Obligations</b>					27,298,026	28,395,349	27,009,777	23,298,358	0	116,257	0	116,257	0	27,258,108	0	39,917	39,917	594,339	XXX	XXX	
..36179M-OP-8	GNMA #MA0462	09/01/2025	MBS PMT		15,367	15,367	13,367	15,213	0	154	0	154	0	15,367	0	0	0	359	10/20/2042	1.A	
..36179N-NB-0	GNMA #MA1286	09/01/2025	MBS PMT		15,556	15,556	13,920	15,434	0	122	0	122	0	15,556	0	0	0	417	09/20/2043	1.A	
..36179Q-TT-6	GNMA #MA2374	09/01/2025	MBS PMT		7,904	7,904	8,561	7,986	0	(83)	0	(83)	0	7,904	0	0	0	262	11/20/2044	1.A	
..36179R-BX-6	GNMA #MA2754	09/01/2025	MBS PMT		2,765	2,765	2,831	2,770	0	(5)	0	(5)	0	2,765	0	0	0	64	04/20/2045	1.A	
..36179R-NX-3	GNMA #MA3106	09/01/2025	MBS PMT		2,888	2,888	2,994	2,895	0	(7)	0	(7)	0	2,888	0	0	0	76	09/20/2045	1.A	

STATEMENT AS OF SEPTEMBER 30, 2025 OF THE Priority Health

**SCHEDULE D - PART 4**

Show All Long-Term Bonds and Stock Sold, Redeemed or Otherwise Disposed of During the Current Quarter

1	2	3	4	5	6	7	8	9	Change In Book/Adjusted Carrying Value					15	16	17	18	19	20	21
									10	11	12	13	14							
CUSIP Identification	Description	Disposal Date	Name of Purchaser	Number of Shares of Stock	Consideration	Par Value	Actual Cost	Prior Year Book/Adjusted Carrying Value	Unrealized Valuation Increase/(Decrease)	Current Year's (Amortization)/Accretion	Current Year's Other Than Temporary Impairment Recognized	Total Change in Book/Adjusted Carrying Value (10 + 11 - 12)	Total Foreign Exchange Change in Book /Adjusted Carrying Value	Book/Adjusted Carrying Value at Disposal Date	Foreign Exchange Gain (Loss) on Disposal	Realized Gain (Loss) on Disposal	Total Gain (Loss) on Disposal	Bond Interest/Stock Dividends Received During Year	Stated Contractual Maturity Date	NAIC Designation, NAIC Designation Modifier and SVO Administrative Symbol
36179R-Q4-4	GNMA #MA3175	09/01/2025	MBS PMT		8,069	8,069	8,988	8,108	0	(39)	0	(39)	0	8,069	0	0	0	241	10/20/2045	1.A
36179T-SH-9	GNMA #MA5020	09/01/2025	MBS PMT		2,298	2,298	2,372	2,302	0	(5)	0	(5)	0	2,298	0	0	0	61	02/20/2048	1.A
36179U-GD-8	GNMA #MA5596	09/01/2025	MBS PMT		2,778	2,778	2,885	2,785	0	(7)	0	(7)	0	2,778	0	0	0	83	11/20/2048	1.A
36179U-MN-9	GNMA #MA5765	09/01/2025	MBS PMT		3,314	3,314	3,629	3,340	0	(25)	0	(25)	0	3,314	0	0	0	111	02/20/2049	1.A
36179U-O6-2	GNMA #MA5877	09/01/2025	MBS PMT		33,316	33,316	31,868	33,217	0	98	0	98	0	33,316	0	0	0	992	04/20/2049	1.A
36179W-DS-4	GNMA #MA7313	09/01/2025	MBS PMT		43,217	43,217	44,711	43,317	0	(100)	0	(100)	0	43,217	0	0	0	868	04/20/2051	1.A
36179W-TY-4	GNMA #MA7767	09/01/2025	MBS PMT		55,758	55,758	57,100	55,834	0	(76)	0	(76)	0	55,758	0	0	0	928	12/20/2051	1.A
36179W-ZE-1	GNMA #MA7941	09/01/2025	MBS PMT		19,234	19,234	18,930	19,176	0	59	0	59	0	19,234	0	0	0	680	03/20/2052	1.A
36179X-QY-5	GNMA #MA8571	09/01/2025	MBS PMT		5,733	5,733	5,836	5,724	0	9	0	9	0	5,733	0	0	0	232	01/20/2053	1.A
36202V-XU-0	GNMA #610991	09/01/2025	MBS PMT		377	377	374	374	0	0	0	0	0	377	0	0	0	13	06/15/2034	1.A
3622A2-R3-8	GNMA #784106	09/01/2025	MBS PMT		14,324	14,324	15,282	14,384	0	(60)	0	(60)	0	14,324	0	0	0	337	01/20/2046	1.A
3622AA-4S-0	GNMA #785433	09/01/2025	MBS PMT		12,558	12,558	13,105	12,590	0	(32)	0	(32)	0	12,558	0	0	0	208	04/20/2051	1.A
3622AA-4V-3	GNMA #785436	09/01/2025	MBS PMT		46,801	46,801	43,101	46,569	0	232	0	232	0	46,801	0	0	0	785	04/20/2051	1.A
3622AC-RZ-5	GNMA #786904	09/01/2025	MBS PMT		18,556	18,556	18,898	18,586	0	(30)	0	(30)	0	18,556	0	0	0	752	08/20/2053	1.A
3622AD-AD-0	GNMA #787304	09/01/2025	MBS PMT		12,493	12,493	12,877	12,549	0	(57)	0	(57)	0	12,493	0	0	0	498	03/20/2054	1.A
3622AD-F3-7	GNMA #787486	09/01/2025	MBS PMT		9,388	9,388	9,586	9,418	0	(31)	0	(31)	0	9,388	0	0	0	339	05/20/2054	1.A
36291E-FM-5	GNMA #626092	09/01/2025	MBS PMT		209	209	213	209	0	0	0	0	0	209	0	0	0	8	03/15/2034	1.A
36291S-PT-1	GNMA #636834	09/01/2025	MBS PMT		148	148	151	148	0	0	0	0	0	148	0	0	0	5	11/15/2034	1.A
36295N-ND-5	GNMA #675488	09/01/2025	MBS PMT		339	339	338	338	0	0	0	0	0	339	0	0	0	12	06/15/2038	1.A
36295Q-LK-4	GNMA #677230	09/01/2025	MBS PMT		3	3	3	3	0	0	0	0	0	3	0	0	0	0	08/15/2038	1.A
36295S-C8-7	GNMA #678795	09/01/2025	MBS PMT		36	36	36	36	0	0	0	0	0	36	0	0	0	1	12/15/2037	1.A
36296K-MH-9	GNMA #693473	09/01/2025	MBS PMT		94	94	95	94	0	0	0	0	0	94	0	0	0	3	06/15/2038	1.A
36296U-HC-7	GNMA #701427	09/01/2025	MBS PMT		7	7	6	7	0	0	0	0	0	7	0	0	0	0	11/15/2038	1.A
<b>1019999999. Subtotal - Asset-Backed Securities - Financial Asset-Backed - Self-Liquidating - Agency Residential Mortgage-Backed Securities - Guaranteed (Exempt from RBC)</b>					<b>333,530</b>	<b>333,529</b>	<b>332,067</b>	<b>333,410</b>	<b>0</b>	<b>117</b>	<b>0</b>	<b>117</b>	<b>0</b>	<b>333,530</b>	<b>0</b>	<b>0</b>	<b>0</b>	<b>8,335</b>	<b>XXX</b>	<b>XXX</b>
38378B-S5-4	GNMA 2013-15 AC	09/01/2025	MBS PMT		47,198	47,198	47,497	47,237	0	(40)	0	(40)	0	47,198	0	0	0	578	08/16/2051	1.A
38378K-BX-6	GNMA 2013-21 AB	09/01/2025	MBS PMT		1,389	1,389	1,393	1,390	0	(1)	0	(1)	0	1,389	0	0	0	18	07/16/2051	1.A
<b>1029999999. Subtotal - Asset-Backed Securities - Financial Asset-Backed - Self-Liquidating - Agency Commercial Mortgage-Backed Securities - Guaranteed (Exempt from RBC)</b>					<b>48,587</b>	<b>48,587</b>	<b>48,890</b>	<b>48,627</b>	<b>0</b>	<b>(41)</b>	<b>0</b>	<b>(41)</b>	<b>0</b>	<b>48,587</b>	<b>0</b>	<b>0</b>	<b>0</b>	<b>596</b>	<b>XXX</b>	<b>XXX</b>
31283H-S9-7	FHLMC G01444	09/01/2025	MBS PMT		147	147	153	147	0	0	0	0	0	147	0	0	0	6	08/01/2032	1.A
3128K6-SB-2	FHLMC A46242	09/01/2025	MBS PMT		161	161	155	161	0	0	0	0	0	161	0	0	0	5	07/01/2035	1.A
3128M4-K6-9	FHLMC G02717	09/01/2025	MBS PMT		219	219	217	219	0	0	0	0	0	219	0	0	0	8	02/01/2037	1.A
3128M7-4V-5	FHLMC G05936	09/01/2025	MBS PMT		662	662	696	664	0	(2)	0	(2)	0	662	0	0	0	18	07/01/2040	1.A
3128MJ-4L-1	FHLMC G08826	09/01/2025	MBS PMT		532	532	562	533	0	(1)	0	(1)	0	532	0	0	0	18	06/01/2048	1.A
3128MJ-6A-3	FHLMC G08864	09/01/2025	MBS PMT		3,020	3,020	3,184	3,034	0	(13)	0	(13)	0	3,020	0	0	0	100	02/01/2049	1.A
3128MJ-6H-8	FHLMC G08871	09/01/2025	MBS PMT		25,664	25,664	25,900	25,677	0	(13)	0	(13)	0	25,664	0	0	0	590	04/01/2049	1.A
3128MJ-6P-0	FHLMC G08877	09/01/2025	MBS PMT		16,883	16,883	17,350	16,911	0	(28)	0	(28)	0	16,883	0	0	0	455	05/01/2049	1.A
3128MJ-BP-4	FHLMC G08045	09/01/2025	MBS PMT		156	156	156	156	0	0	0	0	0	156	0	0	0	5	03/01/2035	1.A
3128MJ-BQ-2	FHLMC G08046	09/01/2025	MBS PMT		614	614	623	614	0	0	0	0	0	614	0	0	0	23	03/01/2035	1.A
3128MJ-CJ-7	FHLMC G08072	09/01/2025	MBS PMT		324	324	315	323	0	1	0	1	0	324	0	0	0	11	08/01/2035	1.A
3128MJ-F4-7	FHLMC G08186	09/01/2025	MBS PMT		193	193	191	192	0	0	0	0	0	193	0	0	0	7	03/01/2037	1.A
3128MJ-LL-2	FHLMC G08330	09/01/2025	MBS PMT		117	117	118	117	0	0	0	0	0	117	0	0	0	3	01/01/2039	1.A
3128MJ-LX-6	FHLMC G08341	09/01/2025	MBS PMT		376	376	406	383	0	(7)	0	(7)	0	376	0	0	0	13	04/01/2039	1.A
3128MJ-Q7-8	FHLMC G08477	09/01/2025	MBS PMT		2,367	2,367	2,447	2,372	0	(5)	0	(5)	0	2,367	0	0	0	55	02/01/2042	1.A
3128MJ-QG-8	FHLMC G08454	09/01/2025	MBS PMT		1,505	1,505	1,563	1,504	0	1	0	1	0	1,505	0	0	0	42	07/01/2041	1.A
3128MJ-S3-5	FHLMC G08537	09/01/2025	MBS PMT		9,093	9,093	8,936	9,084	0	8	0	8	0	9,093	0	0	0	181	07/01/2043	1.A
3128MJ-SS-0	FHLMC G08528	09/01/2025	MBS PMT		4,286	4,286	4,448	4,294	0	(8)	0	(8)	0	4,286	0	0	0	85	04/01/2043	1.A
3128MJ-T2-6	FHLMC G08568	09/01/2025	MBS PMT		1,019	1,019	1,099	1,022	0	(3)	0	(3)	0	1,019	0	0	0	29	01/01/2044	1.A
3128MJ-T6-7	FHLMC G08572	09/01/2025	MBS PMT		5,232	5,232	5,223	5,231	0	1	0	1	0	5,232	0	0	0	124	02/01/2044	1.A
3128MJ-US-7	FHLMC G08592	09/01/2025	MBS PMT		4,787	4,787	5,053	4,801	0	(14)	0	(14)	0	4,787	0	0	0	127	06/01/2044	1.A
3128MJ-VH-0	FHLMC G08615	09/01/2025	MBS PMT		3,174	3,174	3,285	3,180	0	(6)	0	(6)	0	3,174	0	0	0	75	11/01/2044	1.A
3128MJ-VJ-6	FHLMC G08616	09/01/2025	MBS PMT		3,539	3,539	3,780	3,551	0	(12)	0	(12)	0	3,539	0	0	0	93	11/01/2044	1.A
3128MJ-VQ-0	FHLMC G08622	09/01/2025	MBS PMT		3,819	3,819	3,972	3,827	0	(8)	0	(8)	0	3,819	0	0	0	77	01/01/2045	1.A

E05.1

STATEMENT AS OF SEPTEMBER 30, 2025 OF THE Priority Health

**SCHEDULE D - PART 4**

Show All Long-Term Bonds and Stock Sold, Redeemed or Otherwise Disposed of During the Current Quarter

1	2	3	4	5	6	7	8	9	Change In Book/Adjusted Carrying Value				15	16	17	18	19	20	21	
									10	11	12	13								14
CUSIP Identification	Description	Disposal Date	Name of Purchaser	Number of Shares of Stock	Consideration	Par Value	Actual Cost	Prior Year Book/Adjusted Carrying Value	Unrealized Valuation Increase/(Decrease)	Current Year's (Amortization)/Accretion	Current Year's Other Than Temporary Impairment Recognized	Total Change in Book/Adjusted Carrying Value (10 + 11 - 12)	Total Foreign Exchange Change in Book /Adjusted Carrying Value	Book/Adjusted Carrying Value at Disposal Date	Foreign Exchange Gain (Loss) on Disposal	Realized Gain (Loss) on Disposal	Total Gain (Loss) on Disposal	Bond Interest/Stock Dividends Received During Year	Stated Contractual Maturity Date	NAIC Designation, NAIC Designation Modifier and SVO Administrative Symbol
..3128MJ-HL-0	FHLMC G08650	09/01/2025	MBS PMT		5,573	5,573	5,741	5,582	0	(9)	0	(9)	0	5,573	0	0	0	129	06/01/2045	1.A
..3128MJ-IV-8	FHLMC G08659	09/01/2025	MBS PMT		2,842	2,842	2,956	2,848	0	(6)	0	(6)	0	2,842	0	0	0	66	08/01/2045	1.A
..3128MJ-XE-5	FHLMC G08676	09/01/2025	MBS PMT		6,147	6,147	6,376	6,160	0	(13)	0	(13)	0	6,147	0	0	0	142	11/01/2045	1.A
..3128MJ-XK-1	FHLMC G08681	09/01/2025	MBS PMT		4,436	4,436	4,500	4,439	0	(4)	0	(4)	0	4,436	0	0	0	104	12/01/2045	1.A
..3128MJ-XL-9	FHLMC G08682	09/01/2025	MBS PMT		2,949	2,949	3,220	2,957	0	(7)	0	(7)	0	2,949	0	0	0	81	12/01/2045	1.A
..3128MJ-XX-3	FHLMC G08693	09/01/2025	MBS PMT		7,969	7,969	8,198	7,984	0	(15)	0	(15)	0	7,969	0	0	0	186	03/01/2046	1.A
..3128MJ-Y6-1	FHLMC G08732	09/01/2025	MBS PMT		6,473	6,473	6,669	6,483	0	(10)	0	(10)	0	6,473	0	0	0	130	11/01/2046	1.A
..3128MJ-YD-6	FHLMC G08707	09/01/2025	MBS PMT		3,124	3,124	3,382	3,134	0	(10)	0	(10)	0	3,124	0	0	0	81	05/01/2046	1.A
..3128MJ-YH-7	FHLMC G08711	09/01/2025	MBS PMT		3,553	3,553	3,732	3,563	0	(11)	0	(11)	0	3,553	0	0	0	82	06/01/2046	1.A
..3128MJ-YM-6	FHLMC G08715	09/01/2025	MBS PMT		4,315	4,315	4,468	4,323	0	(8)	0	(8)	0	4,315	0	0	0	86	08/01/2046	1.A
..3128MJ-ZP-8	FHLMC G08749	09/01/2025	MBS PMT		2,588	2,588	2,720	2,595	0	(7)	0	(7)	0	2,588	0	0	0	70	02/01/2047	1.A
..3128MM-FF-2	FHLMC G18485	09/01/2025	MBS PMT		7,302	7,302	7,381	7,311	0	(9)	0	(9)	0	7,302	0	0	0	122	10/01/2028	1.A
..3128MM-FN-5	FHLMC G18492	09/01/2025	MBS PMT		5,368	5,368	5,476	5,377	0	(9)	0	(9)	0	5,368	0	0	0	107	01/01/2029	1.A
..3128P7-6T-5	FHLMC C91782	09/01/2025	MBS PMT		5,647	5,647	5,866	5,666	0	(19)	0	(19)	0	5,647	0	0	0	134	08/01/2034	1.A
..3128P7-7E-7	FHLMC C91793	09/01/2025	MBS PMT		5,949	5,949	6,100	5,966	0	(17)	0	(17)	0	5,949	0	0	0	139	10/01/2034	1.A
..3129Z7-R1-1	FHLMC C01410	09/01/2025	MBS PMT		70	70	72	70	0	0	0	0	0	70	0	0	0	3	10/01/2032	1.A
..3129Z7-RZ-9	FHLMC C01404	09/01/2025	MBS PMT		74	74	77	74	0	0	0	0	0	74	0	0	0	3	10/01/2032	1.A
..3129ZJ-BQ-2	FHLMC C01847	09/01/2025	MBS PMT		343	343	339	343	0	0	0	0	0	343	0	0	0	13	06/01/2034	1.A
..3129ZJ-BR-0	FHLMC C01848	09/01/2025	MBS PMT		497	497	510	499	0	(1)	0	(1)	0	497	0	0	0	20	06/01/2034	1.A
..3129ZS-AD-2	FHLMC C09004	09/01/2025	MBS PMT		6,113	6,113	6,479	6,134	0	(20)	0	(20)	0	6,113	0	0	0	142	07/01/2042	1.A
..3129ZS-BK-5	FHLMC C09042	09/01/2025	MBS PMT		4,733	4,733	4,783	4,737	0	(3)	0	(3)	0	4,733	0	0	0	112	05/01/2043	1.A
..312941-3N-5	FHLMC A93505	09/01/2025	MBS PMT		682	682	698	683	0	(1)	0	(1)	0	682	0	0	0	21	08/01/2040	1.A
..31297C-KU-3	FHLMC A24807	09/01/2025	MBS PMT		246	246	243	245	0	1	0	1	0	246	0	0	0	8	07/01/2034	1.A
..31297C-ZQ-6	FHLMC A25251	09/01/2025	MBS PMT		92	92	95	92	0	0	0	0	0	92	0	0	0	4	08/01/2034	1.A
..31297E-LN-4	FHLMC A26889	09/01/2025	MBS PMT		151	151	153	151	0	0	0	0	0	151	0	0	0	6	09/01/2034	1.A
..31297G-FG-1	FHLMC A28267	09/01/2025	MBS PMT		5,725	5,725	5,820	5,750	0	(25)	0	(25)	0	5,725	0	0	0	210	11/01/2034	1.A
..31297N-TA-4	FHLMC A33245	09/01/2025	MBS PMT		88	88	86	88	0	0	0	0	0	88	0	0	0	3	02/01/2035	1.A
..3129J-MB-0	FHLMC #ZA1254	09/01/2025	MBS PMT		9,420	9,420	8,254	9,326	0	94	0	94	0	9,420	0	0	0	181	10/01/2042	1.A
..3129N-G3-6	FHLMC ZA4718	09/01/2025	MBS PMT		5,564	5,564	5,729	5,578	0	(14)	0	(14)	0	5,564	0	0	0	110	10/01/2046	1.A
..3132A5-F5-9	FHLMC ZS4688	09/01/2025	MBS PMT		21,500	21,500	18,727	0	0	29	0	29	0	21,500	0	0	0	109	11/01/2046	1.A
..3132A5-G9-0	FHLMC ZS4724	09/01/2025	MBS PMT		7,380	7,380	8,104	7,433	0	(54)	0	(54)	0	7,380	0	0	0	221	06/01/2047	1.A
..3132A5-HQ-1	FHLMC ZS4739	09/01/2025	MBS PMT		8,528	8,528	9,072	8,563	0	(35)	0	(35)	0	8,528	0	0	0	199	10/01/2047	1.A
..3132AD-ME-5	FHLMC ZT1257	09/01/2025	MBS PMT		4,102	4,102	4,449	4,129	0	(27)	0	(27)	0	4,102	0	0	0	82	01/01/2046	1.A
..3132CII-NJ-9	FHLMC SB0393	09/01/2025	MBS PMT		26,482	26,482	27,587	26,586	0	(104)	0	(104)	0	26,482	0	0	0	366	07/01/2035	1.A
..3132CII-QQ-0	FHLMC SB0463	09/01/2025	MBS PMT		25,270	25,270	23,623	25,037	0	232	0	232	0	25,270	0	0	0	423	01/01/2036	1.A
..3132D5-3Y-6	FHLMC SB8015	09/01/2025	MBS PMT		9,872	9,872	10,155	9,900	0	(28)	0	(28)	0	9,872	0	0	0	165	11/01/2034	1.A
..3132D5-4R-0	FHLMC SB8032	09/01/2025	MBS PMT		9,092	9,092	9,369	9,120	0	(28)	0	(28)	0	9,092	0	0	0	184	02/01/2035	1.A
..3132D6-AG-5	FHLMC SB8107	09/01/2025	MBS PMT		100,375	100,375	103,778	100,686	0	(311)	0	(311)	0	100,375	0	0	0	1,331	06/01/2036	1.A
..3132D9-DU-5	FHLMC SC0115	09/01/2025	MBS PMT		19,501	19,501	17,453	19,364	0	137	0	137	0	19,501	0	0	0	244	01/01/2041	1.A
..3132D9-GR-9	FHLMC SC0208	09/01/2025	MBS PMT		8,859	8,859	8,608	8,842	0	17	0	17	0	8,859	0	0	0	119	11/01/2041	1.A
..3132D9-HT-4	FHLMC SC0242	09/01/2025	MBS PMT		9,162	9,162	8,414	9,112	0	50	0	50	0	9,162	0	0	0	153	02/01/2042	1.A
..3132DM-BG-9	FHLMC SD0039	09/17/2025	VARI OUT		123,328	125,262	133,825	132,712	0	(773)	0	(773)	0	131,939	0	(8,611)	(8,611)	3,973	02/01/2046	1.A
..3132DM-JA-4	FHLMC SD0257	09/01/2025	MBS PMT		21,668	21,668	23,151	21,740	0	(72)	0	(72)	0	21,668	0	0	0	418	01/01/2050	1.A
..3132DM-N7-6	FHLMC SD0414	09/01/2025	MBS PMT		26,872	26,872	28,417	26,942	0	(70)	0	(70)	0	26,872	0	0	0	437	08/01/2050	1.A
..3132DM-VF-9	FHLMC SD0614	09/01/2025	MBS PMT		17,342	17,342	17,823	17,371	0	(29)	0	(29)	0	17,342	0	0	0	288	05/01/2051	1.A
..3132DN-B8-5	FHLMC SD0963	09/01/2025	MBS PMT		46,549	46,549	42,280	46,257	0	292	0	292	0	46,549	0	0	0	1,028	01/01/2052	1.A
..3132DN-F8-1	FHLMC SD1091	09/01/2025	MBS PMT		29,377	29,377	24,668	29,131	0	246	0	246	0	29,377	0	0	0	378	05/01/2052	1.A
..3132DN-GD-9	FHLMC SD1096	09/01/2025	MBS PMT		37,076	37,076	30,112	36,659	0	417	0	417	0	37,076	0	0	0	491	03/01/2052	1.A
..3132DN-UW-1	FHLMC SD1497	09/01/2025	MBS PMT		13,793	13,793	12,232	13,685	0	108	0	108	0	13,793	0	0	0	282	04/01/2043	1.A
..3132DP-3N-6	FHLMC SD2605	09/01/2025	MBS PMT		37,398	37,398	37,755	37,426	0	(28)	0	(28)	0	37,398	0	0	0	1,412	04/01/2053	1.A
..3132DP-M6-2	FHLMC SD2181	09/01/2025	MBS PMT		8,069	8,069	8,205	8,073	0	(4)	0	(4)	0	8,069	0	0	0	297	01/01/2053	1.A
..3132DP-MZ-8	FHLMC SD2176	09/01/2025	MBS PMT		5,473	5,473	5,684	5,466	0	7	0	7	0	5,473	0	0	0	216	01/01/2053	1.A
..3132DP-LP-1	FHLMC SD2390	09/01/2025	MBS PMT		44,155	44,155	44,003	44,144	0	11	0	11	0	44,155	0	0	0	1,423	03/01/2053	1.A
..3132DQ-GL-4	FHLMC SD2903	09/01/2025	MBS PMT		12,665	12,665	9,378	12,483	0	182	0	182	0	12,665	0	0	0	168	03/01/2051	1.A

E05.2

STATEMENT AS OF SEPTEMBER 30, 2025 OF THE Priority Health

**SCHEDULE D - PART 4**

Show All Long-Term Bonds and Stock Sold, Redeemed or Otherwise Disposed of During the Current Quarter

1	2	3	4	5	6	7	8	9	Change In Book/Adjusted Carrying Value					15	16	17	18	19	20	21
									10	11	12	13	14							
CUSIP Identification	Description	Disposal Date	Name of Purchaser	Number of Shares of Stock	Consideration	Par Value	Actual Cost	Prior Year Book/ Adjusted Carrying Value	Unrealized Valuation Increase/ (Decrease)	Current Year's (Amortization)/ Accretion	Current Year's Other Than Temporary Impairment Recognized	Total Change in Book/ Adjusted Carrying Value (10 + 11 - 12)	Total Foreign Exchange Change in Book /Adjusted Carrying Value	Book/ Adjusted Carrying Value at Disposal Date	Foreign Exchange Gain (Loss) on Disposal	Realized Gain (Loss) on Disposal	Total Gain (Loss) on Disposal	Bond Interest/ Stock Dividends Received During Year	Stated Contractual Maturity Date	NAIC Designation, NAIC Designation Modifier and SVO Administrative Symbol
..3132DS-BN-1	FHLMC SD4545	09/01/2025	MBS PMT		42,730	42,730	42,954	42,693	0	37	0	37	0	42,730	0	0	0	1,694	12/01/2053	1.A
..3132DS-BN-1	FHLMC SD4553	09/01/2025	MBS PMT		17,627	17,627	15,280	17,461	0	166	0	166	0	17,627	0	0	0	350	09/01/2053	1.A
..3132DS-K2-7	FHLMC SD4813	09/01/2025	MBS PMT		41,304	41,304	42,434	41,304	0	(384)	0	(384)	0	41,304	0	0	0	1,674	02/01/2054	1.A
..3132DT-3M-0	FHLMC SD6204	09/01/2025	MBS PMT		3,311	3,311	2,870	3,283	0	28	0	28	0	3,311	0	0	0	64	10/01/2053	1.A
..3132DV-3P-8	FHLMC SD8006	09/01/2025	MBS PMT		5,751	5,751	5,976	5,768	0	(16)	0	(16)	0	5,751	0	0	0	155	08/01/2049	1.A
..3132DV-5X-9	FHLMC SD8062	09/01/2025	MBS PMT		6,179	6,179	6,525	6,197	0	(18)	0	(18)	0	6,179	0	0	0	124	05/01/2050	1.A
..3132DV-K5-3	FHLMC SD7516	09/01/2025	MBS PMT		7,741	7,741	8,481	7,787	0	(46)	0	(46)	0	7,741	0	0	0	206	05/01/2050	1.A
..3132DV-K7-9	FHLMC SD7518	09/01/2025	MBS PMT		8,434	8,434	8,983	8,467	0	(33)	0	(33)	0	8,434	0	0	0	169	06/01/2050	1.A
..3132DV-KU-8	FHLMC SD7507	09/01/2025	MBS PMT		8,571	8,571	9,219	8,610	0	(39)	0	(39)	0	8,571	0	0	0	172	11/01/2049	1.A
..3132DV-L5-2	FHLMC SD7548	09/01/2025	MBS PMT		13,746	13,746	13,919	13,755	0	(10)	0	(10)	0	13,746	0	0	0	229	11/01/2051	1.A
..3132DV-LP-8	FHLMC SD7534	09/01/2025	MBS PMT		22,298	22,298	18,958	22,075	0	222	0	222	0	22,298	0	0	0	374	02/01/2051	1.A
..3132DV-LR-4	FHLMC SD7536	09/01/2025	MBS PMT		11,346	11,346	11,392	11,348	0	(3)	0	(3)	0	11,346	0	0	0	189	02/01/2051	1.A
..3132DV-LT-0	FHLMC SD7538	09/01/2025	MBS PMT		8,531	8,531	8,668	8,539	0	(8)	0	(8)	0	8,531	0	0	0	114	04/01/2051	1.A
..3132DV-ME-2	FHLMC SD7557	09/01/2025	MBS PMT		60,028	60,028	58,209	0	0	77	0	77	0	60,028	0	0	0	1,145	12/01/2052	1.A
..3132DV-AH-6	FHLMC SD8108	09/01/2025	MBS PMT		18,747	18,747	19,842	18,806	0	(59)	0	(59)	0	18,747	0	0	0	379	11/01/2050	1.A
..3132DV-BR-3	FHLMC SD8148	09/01/2025	MBS PMT		166,641	166,641	174,641	167,284	0	(643)	0	(643)	0	166,641	0	0	0	3,223	05/01/2051	1.A
..3132DV-BY-8	FHLMC SD8155	09/01/2025	MBS PMT		96,474	96,474	97,510	96,526	0	(52)	0	(52)	0	96,474	0	0	0	1,283	07/01/2051	1.A
..3132DV-DK-6	FHLMC SD8206	09/01/2025	MBS PMT		133,578	133,578	136,140	133,715	0	(137)	0	(137)	0	133,578	0	0	0	2,669	04/01/2052	1.A
..3132DV-FC-2	FHLMC SD8263	09/01/2025	MBS PMT		4,511	4,511	3,911	4,477	0	34	0	34	0	4,511	0	0	0	91	11/01/2052	1.A
..3132DV-FM-0	FHLMC SD8272	09/01/2025	MBS PMT		6,392	6,392	5,542	6,354	0	38	0	38	0	6,392	0	0	0	123	12/01/2052	1.A
..3132DV-HG-1	FHLMC SD8331	09/01/2025	MBS PMT		11,924	11,924	11,799	0	0	4	0	4	0	11,924	0	0	0	220	06/01/2053	1.A
..3132E0-K9-2	FHLMC SD3920	09/01/2025	MBS PMT		24,115	24,115	24,688	0	0	(11)	0	(11)	0	24,115	0	0	0	230	10/01/2053	1.A
..3132E0-KT-8	FHLMC SD3906	09/01/2025	MBS PMT		7,906	7,906	7,905	7,906	0	0	0	0	0	7,906	0	0	0	323	10/01/2053	1.A
..3132FC-EB-7	FHLMC Z40130	09/01/2025	MBS PMT		6,941	6,941	7,086	6,952	0	(11)	0	(11)	0	6,941	0	0	0	139	01/01/2046	1.A
..3132H3-XT-5	FHLMC U90690	09/01/2025	MBS PMT		4,981	4,981	5,128	4,999	0	(18)	0	(18)	0	4,981	0	0	0	113	06/01/2042	1.A
..3132HM-F2-5	FHLMC Q47384	09/01/2025	MBS PMT		6,409	6,409	6,766	6,427	0	(17)	0	(17)	0	6,409	0	0	0	186	04/01/2047	1.A
..3132XC-R9-8	FHLMC Q67712	09/01/2025	MBS PMT		12,345	12,345	12,893	12,378	0	(33)	0	(33)	0	12,345	0	0	0	327	06/01/2048	1.A
..3132XU-KF-1	FHLMC Q52093	09/01/2025	MBS PMT		4,369	4,369	4,496	4,374	0	(5)	0	(5)	0	4,369	0	0	0	97	11/01/2047	1.A
..3132XU-V3-6	FHLMC Q52433	09/01/2025	MBS PMT		1,974	1,974	2,057	1,979	0	(5)	0	(5)	0	1,974	0	0	0	59	11/01/2047	1.A
..31335A-FW-3	FHLMC Q60181	09/01/2025	MBS PMT		2,673	2,673	2,844	2,696	0	(23)	0	(23)	0	2,673	0	0	0	80	01/01/2045	1.A
..3133A0-MM-1	FHLMC QA5773	09/01/2025	MBS PMT		1,334	1,334	1,353	1,336	0	(2)	0	(2)	0	1,334	0	0	0	27	01/01/2050	1.A
..3133B4-H6-5	FHLMC QD6553	09/01/2025	MBS PMT		2,109	2,109	1,780	0	0	6	0	6	0	2,109	0	0	0	27	02/01/2052	1.A
..3133D3-PP-4	FHLMC QK0430	09/01/2025	MBS PMT		6,012	6,012	6,220	6,028	0	(16)	0	(16)	0	6,012	0	0	0	80	09/01/2040	1.A
..3133KH-2D-7	FHLMC RA2572	09/01/2025	MBS PMT		2,567	2,567	2,737	2,575	0	(7)	0	(7)	0	2,567	0	0	0	60	05/01/2050	1.A
..3133KJ-O4-7	FHLMC RA3175	09/01/2025	MBS PMT		18,287	18,287	15,715	0	0	78	0	78	0	18,287	0	0	0	280	07/01/2050	1.A
..3133KL-AZ-0	FHLMC RA4524	09/01/2025	MBS PMT		19,581	19,581	14,906	19,367	0	215	0	215	0	19,581	0	0	0	194	02/01/2051	1.A
..3133KL-B7-1	FHLMC RA4562	09/01/2025	MBS PMT		14,817	14,817	15,852	14,858	0	(40)	0	(40)	0	14,817	0	0	0	250	02/01/2051	1.A
..3133KN-2Y-8	FHLMC RA7091	09/01/2025	MBS PMT		72,972	72,972	66,188	72,575	0	398	0	398	0	72,972	0	0	0	1,215	03/01/2052	1.A
..3133KN-LA-9	FHLMC RA6621	09/01/2025	MBS PMT		26,243	26,243	21,720	0	0	199	0	199	0	26,243	0	0	0	333	01/01/2052	1.A
..3133KY-UK-3	FHLMC RB5086	09/01/2025	MBS PMT		11,386	11,386	10,061	11,299	0	87	0	87	0	11,386	0	0	0	192	11/01/2040	1.A
..3133KY-LN-7	FHLMC RB5089	09/01/2025	MBS PMT		13,651	13,651	11,435	13,496	0	154	0	154	0	13,651	0	0	0	135	12/01/2040	1.A
..3133KY-UZ-0	FHLMC RB5100	09/01/2025	MBS PMT		11,137	11,137	9,479	11,011	0	127	0	127	0	11,137	0	0	0	149	02/01/2041	1.A
..3133KY-V7-1	FHLMC RB5138	09/01/2025	MBS PMT		17,967	17,967	16,170	17,847	0	120	0	120	0	17,967	0	0	0	240	12/01/2041	1.A
..3133KY-WH-8	FHLMC RB5148	09/01/2025	MBS PMT		14,904	14,904	13,297	14,800	0	104	0	104	0	14,904	0	0	0	198	03/01/2042	1.A
..31346Y-GG-2	FHLMC QA4699	09/01/2025	MBS PMT		5,503	5,503	5,586	5,586	0	(5)	0	(5)	0	5,503	0	0	0	111	11/01/2049	1.A
..3136BS-R6-4	FNR 2024-6A FG	09/25/2025	MBS PMT		28,400	28,400	28,400	28,400	0	0	0	0	0	28,400	0	0	0	1,017	09/25/2054	1.A
..3136BT-U5-3	FNR 2024-93 FA	09/25/2025	MBS PMT		56,663	56,663	56,480	56,658	0	183	0	183	0	56,663	0	0	0	2,211	12/25/2054	1.A
..3136BT-XD-0	FNR 2024-90 FB	09/25/2025	MBS PMT		43,686	43,686	43,686	43,686	0	0	0	0	0	43,686	0	0	0	1,644	11/25/2053	1.A
..3136BV-SA-7	FNR 2025-24 FB	09/25/2025	MBS PMT		19,009	19,009	18,997	0	0	65	0	65	0	19,009	0	0	0	438	03/25/2055	1.A
..31371H-O9-6	FNMA #252228	09/01/2025	MBS PMT		53	53	55	52	0	1	0	1	0	53	0	0	0	2	12/01/2028	1.A
..31371K-WK-3	FNMA #254550	09/01/2025	MBS PMT		314	314	325	315	0	(1)	0	(1)	0	314	0	0	0	15	12/01/2032	1.A
..31371M-GF-8	FNMA #255898	09/01/2025	MBS PMT		546	546	521	539	0	7	0	7	0	546	0	0	0	18	10/01/2035	1.A
..31371M-MG-9	FNMA #256059	09/01/2025	MBS PMT		163	163	163	163	0	0	0	0	0	163	0	0	0	6	01/01/2036	1.A
..31371N-CJ-2	FNMA #256673	09/01/2025	MBS PMT		173	173	165	173	0	0	0	0	0	173	0	0	0	7	04/01/2037	1.A

E05.3

STATEMENT AS OF SEPTEMBER 30, 2025 OF THE Priority Health

**SCHEDULE D - PART 4**

Show All Long-Term Bonds and Stock Sold, Redeemed or Otherwise Disposed of During the Current Quarter

1	2	3	4	5	6	7	8	9	Change In Book/Adjusted Carrying Value					15	16	17	18	19	20	21
									10	11	12	13	14							
CUSIP Identification	Description	Disposal Date	Name of Purchaser	Number of Shares of Stock	Consideration	Par Value	Actual Cost	Prior Year Book/ Adjusted Carrying Value	Unrealized Valuation Increase/ (Decrease)	Current Year's (Amortization)/ Accretion	Current Year's Other Than Temporary Impairment Recognized	Total Change in Book/ Adjusted Carrying Value (10 + 11 - 12)	Total Foreign Exchange Change in Book /Adjusted Carrying Value	Book/ Adjusted Carrying Value at Disposal Date	Foreign Exchange Gain (Loss) on Disposal	Realized Gain (Loss) on Disposal	Total Gain (Loss) on Disposal	Bond Interest/ Stock Dividends Received During Year	Stated Contractual Maturity Date	NAIC Designation, NAIC Designation Modifier and SVO Administrative Symbol
..31371N-DR-3	FNMA #256712	09/01/2025	MBS PMT	249	249	249	251	250	0	0	0	0	0	249	0	0	0	10	05/01/2037	1.A
..31371N-P2-5	FNMA #257041	09/01/2025	MBS PMT	201	201	201	200	201	0	0	0	0	0	201	0	0	0	7	01/01/2038	1.A
..31374G-WG-8	FNMA #313947	09/01/2025	MBS PMT	31	31	31	32	31	0	0	0	0	0	31	0	0	0	1	01/01/2028	1.A
..3137F3-CW-2	FHLMC 4768 FG	09/15/2025	MBS PMT	9,993	9,993	9,993	9,943	9,972	0	0	0	0	0	9,993	0	0	0	314	03/15/2048	1.A
..3137FK-BB-1	FHLMC 4852 BF	09/15/2025	MBS PMT	6,663	6,663	6,663	6,661	6,652	0	0	0	0	0	6,663	0	0	0	222	12/15/2048	1.A
..3137FU-AH-7	FHLMC 5002	09/25/2025	MBS PMT	4,768	4,768	4,768	4,769	4,768	0	0	0	0	0	4,768	0	0	0	155	07/25/2050	1.A
..3137FU-KP-8	FHLMC 4989 FA	08/01/2025	MBS PMT	4,393	4,393	4,394	4,380	4,394	0	(1)	0	(1)	0	4,393	0	0	0	138	08/15/2040	1.A
..3137FU-KQ-6	FHLMC 4989 FB	08/01/2025	MBS PMT	4,442	4,442	4,442	4,425	4,442	0	(1)	0	(1)	0	4,442	0	0	0	143	10/15/2040	1.A
..3137HD-YP-9	FHR 5440 KF	09/25/2025	MBS PMT	23,213	23,213	23,213	23,213	23,213	0	0	0	0	0	23,213	0	0	0	804	07/25/2054	1.A
..3137HJ-BW-6	FHR 5500 QF	09/25/2025	MBS PMT	29,979	29,979	29,979	29,979	29,979	0	0	0	0	0	29,979	0	0	0	957	09/25/2054	1.A
..3137HK-PJ-7	FHR 5532 FA	09/25/2025	MBS PMT	24,062	24,062	24,062	24,084	0	0	(3)	0	(3)	0	24,062	0	0	0	551	04/25/2055	1.A
..31385J-RN-0	FNMA #545993	09/01/2025	MBS PMT	121	121	121	124	121	0	0	0	0	0	121	0	0	0	5	11/01/2032	1.A
..31385J-S2-7	FNMA #555285	09/01/2025	MBS PMT	125	125	125	127	125	0	0	0	0	0	125	0	0	0	5	03/01/2033	1.A
..31385X-BD-8	FNMA #555436	09/01/2025	MBS PMT	398	398	398	412	398	0	(1)	0	(1)	0	398	0	0	0	16	05/01/2033	1.A
..31385X-NR-4	FNMA #555800	09/01/2025	MBS PMT	314	314	314	317	314	0	0	0	0	0	314	0	0	0	12	10/01/2033	1.A
..31388K-GA-4	FNMA #606893	09/01/2025	MBS PMT	56	56	56	57	56	0	0	0	0	0	56	0	0	0	2	10/01/2031	1.A
..31388L-C8-1	FNMA #607695	09/01/2025	MBS PMT	22	22	22	23	22	0	0	0	0	0	22	0	0	0	1	11/01/2031	1.A
..3138A2-AX-7	FNMA #AH0921	09/01/2025	MBS PMT	2,337	2,337	2,420	2,342	2,342	0	(5)	0	(5)	0	2,337	0	0	0	62	12/01/2040	1.A
..3138A2-B0-1	FNMA #AH0946	09/01/2025	MBS PMT	1,709	1,709	1,709	1,709	1,709	0	0	0	0	0	1,709	0	0	0	47	12/01/2040	1.A
..3138A4-J8-9	FNMA #AH2986	09/01/2025	MBS PMT	1,788	1,788	1,788	1,883	1,793	0	(5)	0	(5)	0	1,788	0	0	0	46	02/01/2041	1.A
..3138A5-FX-5	FNMA #AH3781	09/01/2025	MBS PMT	1,835	1,835	1,835	1,831	1,831	0	4	0	4	0	1,835	0	0	0	50	02/01/2041	1.A
..3138AF-C2-4	FNMA #A11888	09/01/2025	MBS PMT	1,555	1,555	1,618	1,559	1,559	0	(4)	0	(4)	0	1,555	0	0	0	48	05/01/2041	1.A
..3138AH-XV-3	FNMA #A14291	09/01/2025	MBS PMT	2,104	2,104	2,186	2,113	2,113	0	(10)	0	(10)	0	2,104	0	0	0	67	06/01/2041	1.A
..3138EG-FA-7	FNMA #AL0160	09/01/2025	MBS PMT	3,670	3,670	3,889	3,685	3,685	0	(15)	0	(15)	0	3,670	0	0	0	111	05/01/2041	1.A
..3138EL-A4-5	FNMA #AL3626	09/01/2025	MBS PMT	2,886	2,886	3,092	2,889	2,889	0	(2)	0	(2)	0	2,886	0	0	0	76	09/01/2042	1.A
..3138EP-A3-8	FNMA #AL6325	09/01/2025	MBS PMT	4,962	4,962	5,059	4,966	4,966	0	(4)	0	(4)	0	4,962	0	0	0	99	10/01/2044	1.A
..3138EQ-0G-0	FNMA #AL7654	09/01/2025	MBS PMT	6,740	6,740	7,041	6,765	6,765	0	(25)	0	(25)	0	6,740	0	0	0	134	09/01/2035	1.A
..3138ET-6A-9	FNMA #AL8964	09/01/2025	MBS PMT	2,378	2,378	2,514	2,382	2,378	0	(4)	0	(4)	0	2,378	0	0	0	74	06/01/2045	1.A
..3138LY-5E-3	FNMA #A08044	09/01/2025	MBS PMT	4,857	4,857	4,953	4,867	4,867	0	(10)	0	(10)	0	4,857	0	0	0	114	07/01/2042	1.A
..3138WD-WT-4	FNMA #AS4257	09/01/2025	MBS PMT	2,856	2,856	3,023	2,878	2,878	0	(23)	0	(23)	0	2,856	0	0	0	76	01/01/2045	1.A
..3138WK-NL-5	FNMA #AS9394	09/01/2025	MBS PMT	3,149	3,149	3,390	3,162	3,162	0	(13)	0	(13)	0	3,149	0	0	0	99	04/01/2047	1.A
..3138WQ-AX-0	FNMA #AT2721	09/01/2025	MBS PMT	12,359	12,359	12,277	12,354	12,354	0	5	0	5	0	12,359	0	0	0	245	05/01/2043	1.A
..3138X0-Y3-6	FNMA #AU1629	09/01/2025	MBS PMT	16,741	16,741	16,676	16,738	16,741	0	4	0	4	0	16,741	0	0	0	327	07/01/2043	1.A
..3138X0-ZA-9	FNMA #AU1636	09/01/2025	MBS PMT	4,114	4,114	4,313	4,120	4,120	0	(7)	0	(7)	0	4,114	0	0	0	95	07/01/2043	1.A
..3138YU-H7-9	FNMA #AZ2953	09/01/2025	MBS PMT	7,959	7,959	8,298	8,000	8,000	0	(41)	0	(41)	0	7,959	0	0	0	159	09/01/2030	1.A
..3138YU-HN-4	FNMA #AZ2936	09/01/2025	MBS PMT	9,547	9,547	9,566	9,547	9,547	0	0	0	0	0	9,547	0	0	0	195	09/01/2045	1.A
..31391D-DD-2	FNMA #663500	09/01/2025	MBS PMT	651	651	659	651	651	0	0	0	0	0	651	0	0	0	24	10/01/2032	1.A
..31391J-JM-3	FNMA #668168	09/01/2025	MBS PMT	192	192	198	198	192	0	0	0	0	0	192	0	0	0	8	11/01/2032	1.A
..31400W-T7-5	FNMA #699974	09/01/2025	MBS PMT	39	39	40	39	39	0	0	0	0	0	39	0	0	0	1	04/01/2033	1.A
..31401W-V9-7	FNMA #720740	09/01/2025	MBS PMT	65	65	67	66	66	0	0	0	0	0	65	0	0	0	2	07/01/2033	1.A
..31402Q-CF-6	FNMA #734570	09/01/2025	MBS PMT	91	91	90	91	91	0	0	0	0	0	91	0	0	0	3	08/01/2033	1.A
..31402R-JV-2	FNMA #735676	09/01/2025	MBS PMT	1,594	1,594	1,711	1,603	1,603	0	(9)	0	(9)	0	1,594	0	0	0	53	07/01/2035	1.A
..31402W-LY-2	FNMA #740243	09/01/2025	MBS PMT	197	197	200	198	198	0	0	0	0	0	197	0	0	0	8	10/01/2033	1.A
..31403D-T8-2	FNMA #745875	09/01/2025	MBS PMT	200	200	201	200	200	0	0	0	0	0	200	0	0	0	9	09/01/2036	1.A
..31403V-GR-4	FNMA #759008	09/01/2025	MBS PMT	189	189	188	188	189	0	0	0	0	0	189	0	0	0	6	01/01/2034	1.A
..31404Q-0G-6	FNMA #765555	09/01/2025	MBS PMT	180	180	177	180	180	0	0	0	0	0	180	0	0	0	6	12/01/2033	1.A
..31405C-UT-4	FNMA #785494	09/01/2025	MBS PMT	534	534	530	534	534	0	0	0	0	0	534	0	0	0	18	06/01/2034	1.A
..31405H-SG-9	FNMA #790247	09/01/2025	MBS PMT	46	46	45	46	46	0	0	0	0	0	46	0	0	0	2	08/01/2034	1.A
..31405N-S8-9	FNMA #794443	09/01/2025	MBS PMT	438	438	444	438	438	0	0	0	0	0	438	0	0	0	16	10/01/2034	1.A
..31406B-EJ-0	FNMA #804847	09/01/2025	MBS PMT	229	229	221	229	229	0	0	0	0	0	229	0	0	0	7	01/01/2035	1.A
..31406K-E9-7	FNMA #812060	09/01/2025	MBS PMT	443	443	441	443	443	0	0	0	0	0	443	0	0	0	15	03/01/2035	1.A
..31407B-U6-4	FNMA #826005	09/01/2025	MBS PMT	90	90	87	90	90	0	0	0	0	0	90	0	0	0	3	07/01/2035	1.A
..31407Y-R6-8	FNMA #844809	09/01/2025	MBS PMT	147	147	143	147	147	0	0	0	0	0	147	0	0	0	5	11/01/2035	1.A
..31408B-2X-5	FNMA #846890	09/01/2025	MBS PMT	92	92	91	92	92	0	0	0	0	0	92	0	0	0	3	12/01/2035	1.A

E05.4

STATEMENT AS OF SEPTEMBER 30, 2025 OF THE Priority Health

**SCHEDULE D - PART 4**

Show All Long-Term Bonds and Stock Sold, Redeemed or Otherwise Disposed of During the Current Quarter

1	2	3	4	5	6	7	8	9	Change In Book/Adjusted Carrying Value					15	16	17	18	19	20	21
									10	11	12	13	14							
CUSIP Identification	Description	Disposal Date	Name of Purchaser	Number of Shares of Stock	Consideration	Par Value	Actual Cost	Prior Year Book/Adjusted Carrying Value	Unrealized Valuation Increase/(Decrease)	Current Year's (Amortization)/Accretion	Current Year's Other Than Temporary Impairment Recognized	Total Change in Book/Adjusted Carrying Value (10 + 11 - 12)	Total Foreign Exchange Change in Book /Adjusted Carrying Value	Book/Adjusted Carrying Value at Disposal Date	Foreign Exchange Gain (Loss) on Disposal	Realized Gain (Loss) on Disposal	Total Gain (Loss) on Disposal	Bond Interest/Stock Dividends Received During Year	Stated Contractual Maturity Date	NAIC Designation, NAIC Designation Modifier and SVO Administrative Symbol
..31408D-UQ-5	FNMA #848491	09/01/2025	MBS PMT	185	185	185	182	186	0	0	0	0	0	185	0	0	0	7	12/01/2035	1.A
..3140EB-7J-4	FNMA #BA7196	09/01/2025	MBS PMT	2,070	2,070	2,070	2,111	2,076	0	(6)	0	(6)	0	2,070	0	0	0	55	12/01/2045	1.A
..3140FY-RW-4	FNMA #BF0500	09/01/2025	MBS PMT	9,459	9,459	9,459	8,567	9,417	0	43	0	43	0	9,459	0	0	0	193	12/01/2054	1.A
..3140GQ-3C-8	FNMA #BH2594	09/01/2025	MBS PMT	6,184	6,184	6,184	6,587	6,212	0	(28)	0	(28)	0	6,184	0	0	0	144	08/01/2047	1.A
..3140GS-RX-2	FNMA #BH4101	09/01/2025	MBS PMT	6,900	6,900	6,900	7,045	6,911	0	(10)	0	(10)	0	6,900	0	0	0	165	10/01/2047	1.A
..3140H9-MK-6	FNMA #BJ7561	09/01/2025	MBS PMT	3,735	3,735	3,735	3,888	3,739	0	(4)	0	(4)	0	3,735	0	0	0	112	11/01/2048	1.A
..3140HF-F7-9	FNMA #BK1989	09/01/2025	MBS PMT	2,340	2,340	2,340	2,381	2,345	0	(5)	0	(5)	0	2,340	0	0	0	55	04/01/2048	1.A
..3140J5-ED-7	FNMA #BM1031	09/01/2025	MBS PMT	9,118	9,118	9,118	9,941	9,218	0	(100)	0	(100)	0	9,118	0	0	0	179	09/01/2043	1.A
..3140J6-GP-6	FNMA #BM2005	09/01/2025	MBS PMT	2,891	2,891	2,891	3,027	2,898	0	(7)	0	(7)	0	2,891	0	0	0	77	12/01/2047	1.A
..3140J6-GR-2	FNMA #BM2007	09/01/2025	MBS PMT	4,346	4,346	4,346	4,672	4,366	0	(20)	0	(20)	0	4,346	0	0	0	116	09/01/2048	1.A
..3140J7-UL-7	FNMA #BM3286	09/01/2025	MBS PMT	6,173	6,173	6,173	6,440	6,189	0	(16)	0	(16)	0	6,173	0	0	0	182	11/01/2047	1.A
..3140J8-MW-0	FNMA #BM3972	09/01/2025	MBS PMT	4,240	4,240	4,240	4,115	4,231	0	9	0	9	0	4,240	0	0	0	71	04/01/2038	1.A
..3140J8-UG-6	FNMA #BM4182	09/01/2025	MBS PMT	947	947	947	970	950	0	(3)	0	(3)	0	947	0	0	0	25	07/01/2048	1.A
..3140J9-Q3-8	FNMA #BM4973	09/01/2025	MBS PMT	15,459	15,459	15,459	15,776	15,481	0	(21)	0	(21)	0	15,459	0	0	0	371	05/01/2043	1.A
..3140JA-ND-6	FNMA #BM5787	09/01/2025	MBS PMT	2,865	2,865	2,865	2,967	2,871	0	(6)	0	(6)	0	2,865	0	0	0	78	08/01/2047	1.A
..3140JB-2X-3	FNMA #BM7089	09/01/2025	MBS PMT	12,273	12,273	12,273	10,623	12,157	0	116	0	116	0	12,273	0	0	0	245	02/01/2052	1.A
..3140JB-PS-9	FNMA #BM6732	09/01/2025	MBS PMT	33,605	33,605	33,605	30,187	33,260	0	345	0	345	0	33,605	0	0	0	915	11/01/2054	1.A
..3140KE-U8-2	FNMA #BP6586	09/01/2025	MBS PMT	15,259	15,259	15,259	13,847	15,094	0	164	0	164	0	15,259	0	0	0	201	08/01/2035	1.A
..3140KP-D3-4	FNMA #BQ3721	09/01/2025	MBS PMT	3,814	3,814	3,814	3,205	3,757	0	57	0	57	0	3,814	0	0	0	51	09/01/2050	1.A
..3140KV-QD-5	FNMA #BQ9451	09/01/2025	MBS PMT	28,494	28,494	28,494	27,880	28,451	0	43	0	43	0	28,494	0	0	0	392	03/01/2051	1.A
..3140OD-S9-9	FNMA #CA6256	09/01/2025	MBS PMT	15,995	15,995	15,995	14,790	15,918	0	77	0	77	0	15,995	0	0	0	265	07/01/2050	1.A
..3140OF-3U-1	FNMA #CA8010	09/01/2025	MBS PMT	27,712	27,712	27,712	27,994	27,727	0	(14)	0	(14)	0	27,712	0	0	0	273	12/01/2050	1.A
..3140OF-A9-0	FNMA #CA7231	09/01/2025	MBS PMT	15,946	15,946	15,946	16,855	15,998	0	(52)	0	(52)	0	15,946	0	0	0	270	10/01/2050	1.A
..3140OG-2A-4	FNMA #CA8868	09/01/2025	MBS PMT	1,751	1,751	1,751	1,496	1,733	0	18	0	18	0	1,751	0	0	0	36	02/01/2051	1.A
..3140OG-EC-7	FNMA #CA8230	09/01/2025	MBS PMT	11,309	11,309	11,309	12,038	11,345	0	(36)	0	(36)	0	11,309	0	0	0	182	12/01/2050	1.A
..3140OK-KC-1	FNMA #CB0290	09/01/2025	MBS PMT	11,287	11,287	11,287	8,311	11,140	0	147	0	147	0	11,287	0	0	0	149	04/01/2051	1.A
..3140OL-GL-4	FNMA #CB1102	09/01/2025	MBS PMT	16,201	16,201	16,201	16,654	16,230	0	(29)	0	(29)	0	16,201	0	0	0	218	07/01/2051	1.A
..3140OM-AG-9	FNMA #CB1806	09/01/2025	MBS PMT	16,165	16,165	16,165	16,865	16,200	0	(35)	0	(35)	0	16,165	0	0	0	267	10/01/2051	1.A
..3140OM-Q8-0	FNMA #CB2278	09/01/2025	MBS PMT	11,043	11,043	11,043	11,152	11,048	0	(5)	0	(5)	0	11,043	0	0	0	151	12/01/2051	1.A
..3140ON-QV-7	FNMA #CB3167	09/01/2025	MBS PMT	38,767	38,767	38,767	36,369	38,493	0	274	0	274	0	38,767	0	0	0	779	03/01/2052	1.A
..3140ON-S8-6	FNMA #CB3242	09/01/2025	MBS PMT	3,100	3,100	3,100	2,616	3,000	0	13	0	13	0	3,100	0	0	0	42	04/01/2052	1.A
..3140OP-A8-0	FNMA #CB3630	09/01/2025	MBS PMT	16,590	16,590	16,590	16,432	16,582	0	8	0	8	0	16,590	0	0	0	437	05/01/2052	1.A
..3140OQ-L5-2	FNMA #CB4847	09/01/2025	MBS PMT	29,259	29,259	29,259	29,757	29,295	0	(37)	0	(37)	0	29,259	0	0	0	1,060	10/01/2052	1.A
..3140OQ-DP-7	FNMA #FA0109	09/01/2025	MBS PMT	4,375	4,375	4,375	4,005	4,200	0	0	0	0	0	4,375	0	0	0	13	10/01/2051	1.A
..3140OQ-N4-3	FNMA #FA0410	09/01/2025	MBS PMT	10,069	10,069	10,069	10,167	10,000	0	(12)	0	(12)	0	10,069	0	0	0	197	01/01/2055	1.A
..3140OQ-N4-3	FNMA #FA0410	09/01/2025	MBS PMT	10,069	10,069	10,069	10,167	10,000	0	(12)	0	(12)	0	10,069	0	0	0	197	01/01/2055	1.A
..3140OQ-N4-3	FNMA #FA0410	09/01/2025	MBS PMT	10,069	10,069	10,069	10,167	10,000	0	(12)	0	(12)	0	10,069	0	0	0	197	01/01/2055	1.A
..3140OQ-N4-3	FNMA #FA0410	09/01/2025	MBS PMT	10,069	10,069	10,069	10,167	10,000	0	(12)	0	(12)	0	10,069	0	0	0	197	01/01/2055	1.A
..3140OQ-N4-3	FNMA #FA0410	09/01/2025	MBS PMT	10,069	10,069	10,069	10,167	10,000	0	(12)	0	(12)	0	10,069	0	0	0	197	01/01/2055	1.A
..3140OQ-N4-3	FNMA #FA0410	09/01/2025	MBS PMT	10,069	10,069	10,069	10,167	10,000	0	(12)	0	(12)	0	10,069	0	0	0	197	01/01/2055	1.A
..3140OQ-N4-3	FNMA #FA0410	09/01/2025	MBS PMT	10,069	10,069	10,069	10,167	10,000	0	(12)	0	(12)	0	10,069	0	0	0	197	01/01/2055	1.A
..3140OQ-N4-3	FNMA #FA0410	09/01/2025	MBS PMT	10,069	10,069	10,069	10,167	10,000	0	(12)	0	(12)	0	10,069	0	0	0	197	01/01/2055	1.A
..3140OQ-N4-3	FNMA #FA0410	09/01/2025	MBS PMT	10,069	10,069	10,069	10,167	10,000	0	(12)	0	(12)	0	10,069	0	0	0	197	01/01/2055	1.A
..3140OQ-N4-3	FNMA #FA0410	09/01/2025	MBS PMT	10,069	10,069	10,069	10,167	10,000	0	(12)	0	(12)	0	10,069	0	0	0	197	01/01/2055	1.A
..3140OQ-N4-3	FNMA #FA0410	09/01/2025	MBS PMT	10,069	10,069	10,069	10,167	10,000	0	(12)	0	(12)	0	10,069	0	0	0	197	01/01/2055	1.A
..3140OQ-N4-3	FNMA #FA0410	09/01/2025	MBS PMT	10,069	10,069	10,069	10,167	10,000	0	(12)	0	(12)	0	10,069	0	0	0	197	01/01/2055	1.A
..3140OQ-N4-3	FNMA #FA0410	09/01/2025	MBS PMT	10,069	10,069	10,069	10,167	10,000	0	(12)	0	(12)	0	10,069	0	0	0	197	01/01/2055	1.A
..3140OQ-N4-3	FNMA #FA0410	09/01/2025	MBS PMT	10,069	10,069	10,069	10,167	10,000	0	(12)	0	(12)	0	10,069	0	0	0	197	01/01/2055	1.A
..3140OQ-N4-3	FNMA #FA0410	09/01/2025	MBS PMT	10,069	10,069	10,069	10,167	10,000	0	(12)	0	(12)	0	10,069	0	0	0	197	01/01/2055	1.A
..3140OQ-N4-3	FNMA #FA0410	09/01/2025	MBS PMT	10,069	10,069	10,069	10,167	10,000	0	(12)	0	(12)	0	10,069	0	0	0	197	01/01/2055	1.A
..3140OQ-N4-3	FNMA #FA0410	09/01/2025	MBS PMT	10,069	10,069	10,069	10,167	10,000	0	(12)	0	(12)	0	10,069	0	0	0	197	01/01/2055	1.A
..3140OQ-N4-3	FNMA #FA0410	09/01/2025	MBS PMT	10,069	10,069	10,069	10,167	10,000	0	(12)	0	(12)	0	10,069	0	0	0	197	01/01/2055	1.A
..3140OQ-N4-3	FNMA #FA0410	09/01/2025	MBS PMT	10,069	10,069	10,069	10,167	10,000	0	(12)	0	(12)	0	10,069	0	0	0	197	01/01/2055	1.A
..3140OQ-N4-3	FNMA #FA0410	09/01/2025	MBS PMT	10,069	10,069	10,069	10,167	10,000	0	(12)	0	(12)	0	10,069	0	0	0	197	01/01/2055	1.A
..3140OQ-N4-3	FNMA #FA0410	09/01/2025	MBS PMT	10,069	10,069	10,069	10,167	10,000	0	(12)	0	(12)	0	10,069	0	0	0	197	01/01/2055	1.A
..3140OQ-N4-3	FNMA #FA0410	09/01/2025	MBS PMT	10,069	10,069	10,069	10,167	10,000	0	(12)	0	(12)	0	10,069	0	0	0	197	01/01/2055	1.A
..3140OQ-N4-3	FNMA #FA0410	09/01/2025	MBS PMT	10,069	10,069	10,069	10,167	10,000	0	(12)	0	(12)	0	10,069	0	0	0	197	01/01/2055	1.A
..3140OQ-N4-3	FNMA #FA0410	09/01/2025	MBS PMT	10,069	10,069	10,069	10,167	10,000	0	(12)	0	(12)	0	10,069	0	0	0	197	01/01/2055	1.A
..3140OQ-N4-3	FNMA #FA0410	09/01/2025																		

STATEMENT AS OF SEPTEMBER 30, 2025 OF THE Priority Health

**SCHEDULE D - PART 4**

Show All Long-Term Bonds and Stock Sold, Redeemed or Otherwise Disposed of During the Current Quarter

1	2	3	4	5	6	7	8	9	Change In Book/Adjusted Carrying Value				15	16	17	18	19	20	21	
									10	11	12	13								14
CUSIP Identification	Description	Disposal Date	Name of Purchaser	Number of Shares of Stock	Consideration	Par Value	Actual Cost	Prior Year Book/ Adjusted Carrying Value	Unrealized Valuation Increase/ (Decrease)	Current Year's (Amortization)/ Accretion	Current Year's Other Than Temporary Impairment Recognized	Total Change in Book/ Adjusted Carrying Value (10 + 11 - 12)	Total Foreign Exchange Change in Book /Adjusted Carrying Value	Book/ Adjusted Carrying Value at Disposal Date	Foreign Exchange Gain (Loss) on Disposal	Realized Gain (Loss) on Disposal	Total Gain (Loss) on Disposal	Bond Interest/ Stock Dividends Received During Year	Stated Contractual Maturity Date	NAIC Designation, NAIC Designation Modifier and SVO Administrative Symbol
..3140XD-HV-1	FNMA #FM9243	09/01/2025	MBS PMT		15,071	15,071	15,405	15,092	0	(21)	0	(21)	0	15,071	0	0	0	309	10/01/2051	1.A
..3140XD-R2-4	FNMA #FM9504	09/01/2025	MBS PMT		14,724	14,724	15,170	14,736	0	(13)	0	(13)	0	14,724	0	0	0	252	11/01/2051	1.A
..3140XD-RC-2	FNMA #FM9482	09/01/2025	MBS PMT		61,947	61,947	49,809	61,425	0	522	0	522	0	61,947	0	0	0	1,222	11/01/2051	1.A
..3140XD-W9-3	FNMA #FM9671	09/01/2025	MBS PMT		7,494	7,494	7,336	7,485	0	9	0	9	0	7,494	0	0	0	96	12/01/2051	1.A
..3140XF-A5-0	FNMA #FS0027	09/01/2025	MBS PMT		9,289	9,289	8,522	9,236	0	53	0	53	0	9,289	0	0	0	150	11/01/2051	1.A
..3140XF-ZD-6	FNMA #FS0739	09/01/2025	MBS PMT		14,070	14,070	14,162	14,079	0	(10)	0	(10)	0	14,070	0	0	0	342	02/01/2052	1.A
..3140XG-ZJ-1	FNMA #FS1644	09/01/2025	MBS PMT		8,707	8,707	8,285	8,670	0	37	0	37	0	8,707	0	0	0	177	04/01/2042	1.A
..3140XH-FQ-5	FNMA #FS1974	09/01/2025	MBS PMT		18,669	18,669	16,526	18,447	0	222	0	222	0	18,669	0	0	0	184	02/01/2036	1.A
..3140XH-XT-9	FNMA #FS2489	09/01/2025	MBS PMT		6,452	6,452	6,629	6,469	0	(17)	0	(17)	0	6,452	0	0	0	196	08/01/2052	1.A
..3140XJ-PW-7	FNMA #FS3136	09/01/2025	MBS PMT		12,986	12,986	11,537	12,891	0	95	0	95	0	12,986	0	0	0	304	08/01/2048	1.A
..3140XK-6H-8	FNMA #FS4471	09/01/2025	MBS PMT		10,372	10,372	9,216	10,292	0	80	0	80	0	10,372	0	0	0	177	09/01/2042	1.A
..3140XL-E4-6	FNMA #FS4654	09/01/2025	MBS PMT		15,083	15,083	11,293	14,844	0	239	0	239	0	15,083	0	0	0	200	07/01/2051	1.A
..3140XL-G2-8	FNMA #FS4716	09/01/2025	MBS PMT		60,471	60,471	46,903	59,519	0	952	0	952	0	60,471	0	0	0	790	01/01/2052	1.A
..3140XL-WZ-7	FNMA #FS5163	09/01/2025	MBS PMT		9,198	9,198	8,573	9,078	0	120	0	120	0	9,198	0	0	0	307	04/01/2053	1.A
..3140XM-NE-2	FNMA #FS5788	09/01/2025	MBS PMT		15,226	15,226	15,521	15,247	0	(21)	0	(21)	0	15,226	0	0	0	697	09/01/2053	1.A
..3140XP-3Z-0	FNMA #FS8015	09/01/2025	MBS PMT		23,385	23,385	23,714	0	0	(43)	0	(43)	0	23,385	0	0	0	820	07/01/2053	1.A
..3140XQ-2G-1	FNMA #FS8874	09/01/2025	MBS PMT		25,472	25,472	21,495	0	0	136	0	136	0	25,472	0	0	0	315	06/01/2052	1.A
..3140XQ-YF-8	FNMA #FS8809	09/01/2025	MBS PMT		57,459	57,459	59,075	57,900	0	(441)	0	(441)	0	57,459	0	0	0	2,284	08/01/2054	1.A
..3140XR-NT-8	FNMA #FS9401	09/01/2025	MBS PMT		11,582	11,582	11,737	0	0	(41)	0	(41)	0	11,582	0	0	0	462	10/01/2054	1.A
..31410L-DU-3	FNMA #890315	09/01/2025	MBS PMT		1,442	1,442	1,543	1,449	0	(7)	0	(7)	0	1,442	0	0	0	44	02/01/2041	1.A
..31411E-ZB-6	FNMA #906238	09/01/2025	MBS PMT		116	116	112	0	0	0	0	0	0	116	0	0	0	4	01/01/2037	1.A
..31412R-H5-9	FNMA #932752	09/01/2025	MBS PMT		1,963	1,963	2,093	1,963	0	(1)	0	(1)	0	1,963	0	0	0	68	04/01/2040	1.A
..31413D-S4-0	FNMA #942539	09/01/2025	MBS PMT		27	27	27	27	0	0	0	0	0	27	0	0	0	1	08/01/2037	1.A
..31413S-CV-4	FNMA #953784	09/01/2025	MBS PMT		204	204	205	204	0	0	0	0	0	204	0	0	0	8	11/01/2037	1.A
..31413S-HB-3	FNMA #953926	09/01/2025	MBS PMT		415	415	420	415	0	0	0	0	0	415	0	0	0	15	12/01/2037	1.A
..31416X-J9-2	FNMA #AB2087	09/01/2025	MBS PMT		761	761	766	766	0	(1)	0	(1)	0	761	0	0	0	21	01/01/2041	1.A
..31417B-2S-5	FNMA #AB5284	09/01/2025	MBS PMT		4,291	4,291	4,569	4,282	0	9	0	9	0	4,291	0	0	0	106	06/01/2042	1.A
..31417F-R8-3	FNMA #AB8610	09/01/2025	MBS PMT		11,251	11,251	11,240	11,250	0	1	0	1	0	11,251	0	0	0	224	03/01/2043	1.A
..31417G-F3-5	FNMA #AB9185	09/01/2025	MBS PMT		5,385	5,385	5,435	5,386	0	(1)	0	(1)	0	5,385	0	0	0	105	04/01/2043	1.A
..31417Y-SC-2	FNMA #MA0514	09/01/2025	MBS PMT		1,000	1,000	1,035	1,005	0	(5)	0	(5)	0	1,000	0	0	0	27	09/01/2040	1.A
..31418A-GR-3	FNMA #MA1107	09/01/2025	MBS PMT		7,874	7,874	8,063	7,895	0	(21)	0	(21)	0	7,874	0	0	0	182	07/01/2032	1.A
..31418A-JV-1	FNMA #MA1175	09/01/2025	MBS PMT		3,377	3,377	3,505	3,381	0	(5)	0	(5)	0	3,377	0	0	0	67	09/01/2042	1.A
..31418A-SU-3	FNMA #MA1430	09/01/2025	MBS PMT		5,281	5,281	5,336	5,284	0	(3)	0	(3)	0	5,281	0	0	0	105	05/01/2043	1.A
..31418A-TA-6	FNMA #MA1444	09/01/2025	MBS PMT		3,394	3,394	3,482	3,401	0	(7)	0	(7)	0	3,394	0	0	0	57	05/01/2033	1.A
..31418A-TY-4	FNMA #MA1466	09/01/2025	MBS PMT		4,556	4,556	4,574	4,557	0	(1)	0	(1)	0	4,556	0	0	0	100	06/01/2043	1.A
..31418B-3S-3	FNMA #MA2608	09/01/2025	MBS PMT		4,840	4,840	4,271	0	0	0	0	0	0	4,840	0	0	0	12	05/01/2046	1.A
..31418B-5U-4	FNMA #MA3558	09/01/2025	MBS PMT		5,002	5,002	5,035	5,005	0	(3)	0	(3)	0	5,002	0	0	0	100	01/01/2034	1.A
..31418C-DJ-0	FNMA #MA2804	09/01/2025	MBS PMT		5,367	5,367	5,583	5,389	0	(22)	0	(22)	0	5,367	0	0	0	107	11/01/2036	1.A
..31418C-DL-5	FNMA #MA2806	09/01/2025	MBS PMT		4,829	4,829	4,975	4,836	0	(7)	0	(7)	0	4,829	0	0	0	97	11/01/2046	1.A
..31418C-FN-9	FNMA #MA2872	09/01/2025	MBS PMT		572	572	616	572	0	0	0	0	0	572	0	0	0	17	01/01/2047	1.A
..31418C-OB-3	FNMA #MA3149	09/01/2025	MBS PMT		3,170	3,170	3,323	3,179	0	(9)	0	(9)	0	3,170	0	0	0	85	10/01/2047	1.A
..31418C-RA-4	FNMA #MA3180	09/01/2025	MBS PMT		7,797	7,797	8,143	7,830	0	(33)	0	(33)	0	7,797	0	0	0	188	11/01/2032	1.A
..31418C-RD-8	FNMA #MA3183	09/01/2025	MBS PMT		6,902	6,902	7,105	6,914	0	(13)	0	(13)	0	6,902	0	0	0	183	11/01/2047	1.A
..31418C-U7-7	FNMA #MA3305	09/01/2025	MBS PMT		4,912	4,912	5,210	4,931	0	(19)	0	(19)	0	4,912	0	0	0	116	03/01/2048	1.A
..31418C-UF-9	FNMA #MA3281	09/01/2025	MBS PMT		4,319	4,319	4,558	4,327	0	(8)	0	(8)	0	4,319	0	0	0	116	02/01/2038	1.A
..31418C-V3-5	FNMA #MA3333	09/01/2025	MBS PMT		4,760	4,760	4,985	4,774	0	(14)	0	(14)	0	4,760	0	0	0	125	04/01/2048	1.A
..31418C-XP-4	FNMA #MA3385	09/01/2025	MBS PMT		15,080	15,080	15,483	15,107	0	(27)	0	(27)	0	15,080	0	0	0	454	06/01/2048	1.A
..31418D-3X-8	FNMA #MA4413	09/01/2025	MBS PMT		14,654	14,654	14,887	14,665	0	(11)	0	(11)	0	14,654	0	0	0	194	09/01/2051	1.A
..31418D-AS-1	FNMA #MA3616	09/01/2025	MBS PMT		2,112	2,112	2,205	2,115	0	(3)	0	(3)	0	2,112	0	0	0	65	03/01/2049	1.A
..31418D-C6-7	FNMA #MA3692	09/01/2025	MBS PMT		3,262	3,262	3,370	3,268	0	(6)	0	(6)	0	3,262	0	0	0	76	07/01/2049	1.A
..31418D-CW-0	FNMA #MA3684	09/01/2025	MBS PMT		11,102	11,102	11,516	11,130	0	(28)	0	(28)	0	11,102	0	0	0	297	06/01/2039	1.A
..31418D-ML-3	FNMA #MA3962	09/01/2025	MBS PMT		9,699	9,699	10,301	9,735	0	(28)	0	(28)	0	9,699	0	0	0	264	03/01/2050	1.A
..31418D-P5-5	FNMA #MA4043	09/01/2025	MBS PMT		9,365	9,365	9,883	9,419	0	(53)	0	(53)	0	9,365	0	0	0	189	06/01/2035	1.A
..31418D-P9-7	FNMA #MA4047	09/01/2025	MBS PMT		14,690	14,690	11,488	14,530	0	160	0	160	0	14,690	0	0	0	194	06/01/2050	1.A

E05.6

STATEMENT AS OF SEPTEMBER 30, 2025 OF THE Priority Health

**SCHEDULE D - PART 4**

Show All Long-Term Bonds and Stock Sold, Redeemed or Otherwise Disposed of During the Current Quarter

1	2	3	4	5	6	7	8	9	Change In Book/Adjusted Carrying Value					15	16	17	18	19	20	21
									10	11	12	13	14							
CUSIP Identification	Description	Disposal Date	Name of Purchaser	Number of Shares of Stock	Consideration	Par Value	Actual Cost	Prior Year Book/ Adjusted Carrying Value	Unrealized Valuation Increase/ (Decrease)	Current Year's (Amortization)/ Accretion	Current Year's Other Than Temporary Impairment Recognized	Total Change in Book/ Adjusted Carrying Value (10 + 11 - 12)	Total Foreign Exchange Change in Book /Adjusted Carrying Value	Book/ Adjusted Carrying Value at Disposal Date	Foreign Exchange Gain (Loss) on Disposal	Realized Gain (Loss) on Disposal	Total Gain (Loss) on Disposal	Bond Interest/ Stock Dividends Received During Year	Stated Contractual Maturity Date	NAIC Designation, NAIC Designation Modifier and SVO Administrative Symbol
..31418D-Q7-0	FNMA #MA4077	09/01/2025	MBS PMT		21,455	21,455	22,069	21,485	0	(29)	0	(29)	0	21,455	0	0	0	284	07/01/2050	1.A
..31418D-RP-9	FNMA #MA4093	09/01/2025	MBS PMT		13,151	13,151	11,501	13,024	0	127	0	127	0	13,151	0	0	0	175	08/01/2040	1.A
..31418D-TQ-5	FNMA #MA4158	09/01/2025	MBS PMT		18,210	18,210	15,142	18,061	0	149	0	149	0	18,210	0	0	0	242	10/01/2050	1.A
..31418D-V8-2	FNMA #MA4238	09/01/2025	MBS PMT		21,759	21,759	22,830	21,808	0	(49)	0	(49)	0	21,759	0	0	0	364	01/01/2051	1.A
..31418D-VC-3	FNMA #MA4210	09/01/2025	MBS PMT		12,355	12,355	12,957	12,386	0	(30)	0	(30)	0	12,355	0	0	0	205	12/01/2051	1.A
..31418D-WR-9	FNMA #MA4255	09/01/2025	MBS PMT		12,984	12,984	13,448	13,006	0	(22)	0	(22)	0	12,984	0	0	0	172	02/01/2051	1.A
..31418D-YB-2	FNMA #MA4305	09/01/2025	MBS PMT		13,537	13,537	13,490	13,535	0	2	0	2	0	13,537	0	0	0	180	04/01/2051	1.A
..31418E-6Y-1	FNMA #MA5386	09/01/2025	MBS PMT		24,505	24,505	22,943	24,482	0	23	0	23	0	24,505	0	0	0	714	06/01/2054	1.A
..31418E-AN-0	FNMA #MA4512	09/01/2025	MBS PMT		84,829	84,829	87,374	84,963	0	(134)	0	(134)	0	84,829	0	0	0	1,412	01/01/2052	1.A
..31418E-BJ-8	FNMA #MA4540	09/01/2025	MBS PMT		12,718	12,718	10,742	0	0	14	0	14	0	12,718	0	0	0	32	02/01/2042	1.A
..31418E-BK-5	FNMA #MA4541	09/01/2025	MBS PMT		33,897	33,897	31,800	33,702	0	196	0	196	0	33,897	0	0	0	571	02/01/2042	1.A
..31418E-CG-3	FNMA #MA4570	09/01/2025	MBS PMT		13,071	13,071	10,720	0	0	168	0	168	0	13,071	0	0	0	175	03/01/2042	1.A
..31418E-ES-5	FNMA #MA4644	09/01/2025	MBS PMT		78,562	78,562	78,415	78,554	0	9	0	9	0	78,562	0	0	0	2,086	05/01/2052	1.A
..31418E-KS-8	FNMA #MA4804	09/01/2025	MBS PMT		103,694	103,694	95,212	103,694	0	426	0	426	0	103,694	0	0	0	2,735	11/01/2052	1.A
..31418N-ZW-3	FNMA #AD1656	09/01/2025	MBS PMT		1,340	1,340	1,397	1,345	0	(5)	0	(5)	0	1,340	0	0	0	40	03/01/2040	1.A
..31418R-GS-4	FNMA #AD3808	09/01/2025	MBS PMT		689	689	703	689	0	0	0	0	0	689	0	0	0	21	04/01/2040	1.A
..31418U-CG-7	FNMA #AD6370	09/01/2025	MBS PMT		1,354	1,354	1,366	1,353	0	1	0	1	0	1,354	0	0	0	42	05/01/2040	1.A
..31418W-PG-9	FNMA #AD8522	09/01/2025	MBS PMT		421	421	425	422	0	0	0	0	0	421	0	0	0	11	08/01/2040	1.A
..31419A-AN-4	FNMA #AE0828	09/01/2025	MBS PMT		1,086	1,086	1,127	1,090	0	(3)	0	(3)	0	1,086	0	0	0	25	02/01/2041	1.A
..31419A-NM-5	FNMA #AE0395	09/01/2025	MBS PMT		11,215	11,215	11,852	11,295	0	(80)	0	(80)	0	11,215	0	0	0	340	10/01/2040	1.A
..31427M-GT-2	FHLMC SL0209	09/01/2025	MBS PMT		42,528	42,528	42,063	0	0	31	0	31	0	42,528	0	0	0	868	12/01/2054	1.A
..35563P-ML-0	FHLMC SCRT 2019-4 MA	09/01/2025	MBS PMT		4,691	4,691	4,794	4,700	0	(9)	0	(9)	0	4,691	0	0	0	92	02/25/2059	1.A
..35563P-QN-2	FHLMC SCRT 2020-2 MT	09/01/2025	MBS PMT		4,967	4,967	5,117	4,976	0	(8)	0	(8)	0	4,967	0	0	0	66	11/25/2059	1.A
<b>1039999999. Subtotal - Asset-Backed Securities - Financial Asset-Backed - Self-Liquidating - Agency Residential Mortgage-Backed Securities - Not/Partially Guaranteed (Not Exempt from RBC)</b>					<b>4,829,008</b>	<b>4,845,938</b>	<b>4,742,829</b>	<b>4,431,143</b>	<b>0</b>	<b>8,985</b>	<b>0</b>	<b>8,985</b>	<b>0</b>	<b>4,831,350</b>	<b>0</b>	<b>(2,341)</b>	<b>(2,341)</b>	<b>112,661</b>	<b>XXX</b>	<b>XXX</b>
..3137FM-CF-7	FHMS KC04 ASB	09/01/2025	MBS PMT		40,065	40,065	39,963	40,043	0	22	0	22	0	40,065	0	0	0	665	12/25/2028	1.A
..3140FX-HH-8	FNMA #BF0231	09/01/2025	MBS PMT		3,310	3,310	3,405	3,320	0	(10)	0	(10)	0	3,310	0	0	0	66	04/01/2042	1.A
..3140FX-HT-2	FNMA #BF0241	09/01/2025	MBS PMT		7,280	7,280	7,767	7,307	0	(27)	0	(27)	0	7,280	0	0	0	168	05/01/2052	1.A
..3140FX-K6-8	FNMA #BF0316	09/01/2025	MBS PMT		16,530	16,530	15,119	16,463	0	67	0	67	0	16,530	0	0	0	402	07/01/2052	1.A
..3140FX-L3-4	FNMA #BF0345	09/01/2025	MBS PMT		5,659	5,659	5,813	5,671	0	(12)	0	(12)	0	5,659	0	0	0	112	10/01/2043	1.A
<b>1049999999. Subtotal - Asset-Backed Securities - Financial Asset-Backed - Self-Liquidating - Agency Commercial Mortgage-Backed Securities - Not/Partially Guaranteed (Not Exempt from RBC)</b>					<b>72,844</b>	<b>72,844</b>	<b>72,067</b>	<b>72,804</b>	<b>0</b>	<b>40</b>	<b>0</b>	<b>40</b>	<b>0</b>	<b>72,844</b>	<b>0</b>	<b>0</b>	<b>0</b>	<b>1,413</b>	<b>XXX</b>	<b>XXX</b>
..03464L-AA-4	ACMT 2020-4 A1	09/01/2025	MBS PMT		27,639	27,639	27,834	27,666	0	(28)	0	(28)	0	27,639	0	0	0	285	06/25/2065	1.A
..10570T-AP-0	BRAVO 2025-NQM7 A1	09/01/2025	MBS PMT		16,628	16,628	16,628	0	0	14	0	14	0	16,628	0	0	0	129	07/25/2065	1.A FE
..16159L-AC-2	CHASE 2023-RPL1 A1	09/01/2025	MBS PMT		9,658	9,658	8,739	9,612	0	46	0	46	0	9,658	0	0	0	225	06/25/2062	1.A
..16159M-AA-4	CHASE 2024-RPL1 A1A	09/01/2025	MBS PMT		13,457	13,457	11,513	13,320	0	137	0	137	0	13,457	0	0	0	296	03/25/2064	1.A
..16159R-AC-9	CHASE 2023-RPL2	09/01/2025	MBS PMT		11,031	11,031	9,427	10,933	0	99	0	99	0	11,031	0	0	0	237	03/25/2063	1.A
..161930-AB-8	CHASE 2024-RPL2 A1A	09/01/2025	MBS PMT		22,644	22,644	19,545	22,464	0	180	0	180	0	22,644	0	0	0	504	08/25/2064	1.A
..17181K-AA-8	CTM 2023-R2 A1	09/01/2025	MBS PMT		15,908	15,908	15,665	15,883	0	25	0	25	0	15,908	0	0	0	584	08/25/2064	1.A
..24381W-AA-6	DRMT 2021-2 A1	09/01/2025	MBS PMT		5,091	5,091	5,091	5,091	0	0	0	0	0	5,091	0	0	0	33	04/25/2066	1.A FE
..31574P-AA-3	EFMT 2020-1 A1	09/01/2025	MBS PMT		7,561	7,561	7,698	7,573	0	(13)	0	(13)	0	7,561	0	0	0	97	05/25/2065	1.A
..46656N-AA-7	JPMIT 2023-DSC1 A1	09/01/2025	MBS PMT		8,920	8,920	8,259	8,867	0	53	0	53	0	8,920	0	0	0	270	07/25/2063	1.A
..552751-AA-7	MFRA 2020-NQM2	09/01/2025	MBS PMT		11,582	11,582	11,582	11,582	0	0	0	0	0	11,582	0	0	0	107	04/25/2065	1.A
..59166E-AB-1	MST 2019-1A A1A	09/01/2025	MBS PMT		17,139	17,139	17,222	17,679	0	(83)	0	(83)	0	17,139	0	0	0	445	04/25/2058	1.A
..59980X-AC-1	MCMLT 2018-3 A1	09/01/2025	MBS PMT		8,617	8,617	8,835	8,647	0	(31)	0	(31)	0	8,617	0	0	0	197	08/25/2058	1.A
..59981B-AC-8	MCMLT 2019G1	09/01/2025	MBS PMT		5,791	5,791	5,819	5,798	0	(7)	0	(7)	0	5,791	0	0	0	109	07/25/2059	1.A
..59981T-AC-9	MCMLT 2019G2	09/01/2025	MBS PMT		9,931	9,931	9,994	9,941	0	(9)	0	(9)	0	9,931	0	0	0	186	08/25/2059	1.A
..64828X-AA-1	NRZT 2020-RPL1 A1	09/01/2025	MBS PMT		11,074	11,074	11,252	11,099	0	(25)	0	(25)	0	11,074	0	0	0	204	11/25/2059	1.A
..64830H-AA-2	NRZT 2019-RPL2 A1	09/01/2025	MBS PMT		24,282	24,282	22,658	24,044	0	238	0	238	0	24,282	0	0	0	521	02/25/2059	1.A
..64830T-AD-0	NRZT 2020-1A A1B	09/01/2025	MBS PMT		3,390	3,390	3,486	3,400	0	(10)	0	(10)	0	3,390	0	0	0	79	10/25/2059	1.A
..67115F-AA-5	OBX 2022-NQMS A1	09/01/2025	MBS PMT		10,096	10,096	10,063	10,093	0	3	0	3	0	10,096	0	0	0	288	05/25/2062	1.A

E05.7

STATEMENT AS OF SEPTEMBER 30, 2025 OF THE Priority Health

**SCHEDULE D - PART 4**

Show All Long-Term Bonds and Stock Sold, Redeemed or Otherwise Disposed of During the Current Quarter

1	2	3	4	5	6	7	8	9	Change In Book/Adjusted Carrying Value					15	16	17	18	19	20	21
									10	11	12	13	14							
CUSIP Identification	Description	Disposal Date	Name of Purchaser	Number of Shares of Stock	Consideration	Par Value	Actual Cost	Prior Year Book/ Adjusted Carrying Value	Unrealized Valuation Increase/ (Decrease)	Current Year's (Amortization)/ Accretion	Current Year's Other Than Temporary Impairment Recognized	Total Change in Book/ Adjusted Carrying Value (10 + 11 - 12)	Total Foreign Exchange Change in Book /Adjusted Carrying Value	Book/ Adjusted Carrying Value at Disposal Date	Foreign Exchange Gain (Loss) on Disposal	Realized Gain (Loss) on Disposal	Total Gain (Loss) on Disposal	Bond Interest/ Stock Dividends Received During Year	Stated Contractual Maturity Date	NAIC Designation, NAIC Designation Modifier and SVO Administrative Symbol
.67116K-AC-9	OBX 2022-NOM3 A1	09/01/2025	MBS PMT		31,248	31,248	30,905	31,219	0	29	0	29	0	31,248	0	0	0	692	01/25/2062	1.A
.67448M-AA-8	OBX 2024-HYB1 A1	09/01/2025	MBS PMT		21,259	21,259	20,370	21,145	0	113	0	113	0	21,259	0	0	0	504	03/25/2053	1.A
.86358E-PB-6	SAIL 2004-10 A11	09/25/2025	MBS PMT		22,119	22,119	22,153	22,153	0	0	0	0	0	22,153	0	(34)	(34)	687	11/25/2034	1.A FM
.89175T-AA-6	TPMT 2018-4 A1	09/01/2025	MBS PMT		8,995	8,995	8,501	8,942	0	53	0	53	0	8,995	0	0	0	179	06/25/2058	1.A
.89176L-AA-2	TPMT 2018-6 A1A	09/01/2025	MBS PMT		4,818	4,818	4,966	4,838	0	(20)	0	(20)	0	4,818	0	0	0	123	03/25/2058	1.A
.89176U-AN-4	TPMT 2020-2 A1A	09/01/2025	MBS PMT		5,534	5,534	5,628	5,541	0	(7)	0	(7)	0	5,534	0	0	0	60	04/25/2060	1.A
.89177B-AA-3	TPMT 2019 A1	09/01/2025	MBS PMT		17,908	17,908	19,189	18,059	0	(150)	0	(150)	0	17,908	0	0	0	463	03/25/2058	1.A
.89177H-AA-0	TPMT 2019-HY2 A1	09/25/2025	MBS PMT		6,316	6,316	6,373	6,321	0	(6)	0	(6)	0	6,316	0	0	0	303	05/25/2058	1.A
.89177X-AA-5	TPMT 2019-HY3 A1A	09/25/2025	VARIOUS		5,965	5,965	5,978	5,967	0	(1)	0	(1)	0	5,965	0	0	0	347	10/25/2059	1.A
.89178B-AA-2	TPMT 2019-4 A1	09/01/2025	MBS PMT		11,538	11,538	11,689	11,551	0	(13)	0	(13)	0	11,538	0	0	0	224	10/25/2059	1.A
.89178W-AU-2	TPMT 2020-1 A1	09/01/2025	MBS PMT		6,371	6,371	6,639	6,392	0	(20)	0	(20)	0	6,371	0	0	0	113	10/25/2060	1.A
.89180N-AA-2	TPMT 2022-3 A1	09/01/2025	MBS PMT		22,188	22,188	21,286	22,113	0	(76)	0	(76)	0	22,188	0	0	0	548	08/01/2062	1.A
.89181J-AA-0	TPMT 2023-1 A1	09/01/2025	MBS PMT		13,691	13,691	13,052	13,620	0	(71)	0	(71)	0	13,691	0	0	0	346	01/25/2063	1.A
.89183A-AP-4	TPMT 2024-2 A1A	09/01/2025	MBS PMT		35,268	35,268	35,343	35,290	0	(22)	0	(22)	0	35,268	0	0	0	1,126	12/25/2064	1.A FE
.89194A-AA-8	TPMT 2024-5 A1A	09/01/2025	MBS PMT		27,999	27,999	27,235	27,891	0	108	0	108	0	27,999	0	0	0	730	10/25/2064	1.A
.92539J-AC-4	VERBUS 2021-3	09/01/2025	MBS PMT		9,008	9,008	9,008	9,008	0	0	0	0	0	9,008	0	0	0	84	06/25/2066	1.A
<b>1059999999. Subtotal - Asset-Backed Securities - Financial Asset-Backed - Self-Liquidating - Non-Agency Residential Mortgage-Backed Securities (Unaffiliated)</b>					<b>490,664</b>	<b>490,664</b>	<b>480,082</b>	<b>473,285</b>	<b>0</b>	<b>800</b>	<b>0</b>	<b>800</b>	<b>0</b>	<b>490,698</b>	<b>0</b>	<b>(34)</b>	<b>(34)</b>	<b>11,325</b>	<b>XXX</b>	<b>XXX</b>
.00217V-AA-8	AREIT 2022-CRE7 A	09/17/2025	MBS PMT		22,422	22,422	22,366	22,365	0	(57)	0	(57)	0	22,422	0	0	0	999	06/17/2039	1.A FE
.06540X-BE-0	BANK 2019-BN22 ASB	09/01/2025	MBS PMT		49,095	49,095	50,566	49,216	0	(120)	0	(120)	0	49,095	0	0	0	947	11/15/2062	1.A
.12591Q-AR-3	COMM 2014-UBS4 A5	09/01/2025	MBS PMT		9,869	9,869	10,236	9,869	0	0	0	0	0	9,869	0	0	0	191	08/10/2047	1.A
.17324K-AP-3	CGCMT 2015-GC35 A4	09/01/2025	MBS PMT		128,027	128,027	138,274	129,220	0	(1,193)	0	(1,193)	0	128,027	0	0	0	3,666	11/10/2048	1.A
.36250W-AA-8	GSMIS 2015-590M A	09/01/2025	MBS PMT		600,000	600,000	655,570	608,506	0	(8,506)	0	(8,506)	0	600,000	0	0	0	16,295	10/10/2035	1.A
.46643P-BE-9	JPMBS 2014-C25 A5	09/01/2025	MBS PMT		4,498	4,498	4,635	4,498	0	0	0	0	0	4,498	0	0	0	110	11/15/2047	1.A
.61691A-BL-6	MSC 2015-UBS8 A4	09/01/2025	MBS PMT		48,253	48,253	45,846	47,613	0	640	0	640	0	48,253	0	0	0	1,336	12/15/2048	1.A
.94989Q-AV-2	WFCM 2015-9G1 A4	08/01/2025	MBS PMT		474,668	474,668	470,946	469,595	0	5,073	0	5,073	0	474,668	0	0	0	11,318	09/15/2048	1.A
.05608X-AA-0	BXMT 2020FL3	09/15/2025	MBS PMT		11,543	11,543	11,543	11,543	0	0	0	0	0	11,543	0	0	0	429	11/15/2037	1.A FE
<b>1079999999. Subtotal - Asset-Backed Securities - Financial Asset-Backed - Self-Liquidating - Non-Agency Commercial Mortgage-Backed Securities (Unaffiliated)</b>					<b>1,348,375</b>	<b>1,348,375</b>	<b>1,409,982</b>	<b>1,352,425</b>	<b>0</b>	<b>(4,049)</b>	<b>0</b>	<b>(4,049)</b>	<b>0</b>	<b>1,348,375</b>	<b>0</b>	<b>0</b>	<b>0</b>	<b>35,291</b>	<b>XXX</b>	<b>XXX</b>
.58003U-AA-6	MF1 2020-FL4 A	09/15/2025	MBS PMT		1,013	1,013	1,013	1,013	0	0	0	0	0	1,013	0	0	0	42	11/15/2035	1.A FE
.03880R-AA-7	ARBOR REALTY COLLATERALIZED LOAN OBLIGAT	09/15/2025	MBS PMT		110,340	110,340	110,409	110,353	0	(14)	0	(14)	0	110,340	0	0	0	4,409	11/15/2036	1.A FE
.12481Q-AC-9	CBAM 2018-5A A	08/17/2025	VARIOUS		240,266	240,266	236,902	239,936	0	330	0	330	0	240,266	0	0	0	11,625	04/17/2031	1.A FE
.42704R-AA-9	HERA 2021-FL1 A	07/18/2025	MBS PMT		46,328	46,328	46,328	46,328	0	0	0	0	0	46,328	0	0	0	1,498	02/18/2038	1.A FE
.62432L-AL-5	MVEW 2017-2A AR	07/16/2025	MBS PMT		21,534	21,534	21,534	21,534	0	0	0	0	0	21,534	0	0	0	932	01/16/2031	1.A FE
.78486B-AA-2	STWD 2021-FL2 A	09/18/2025	MBS PMT		7,415	7,415	7,415	7,415	0	0	0	0	0	7,415	0	0	0	254	04/18/2038	1.A FE
.92330Y-AN-3	VENTR 2018-33A A1L	07/15/2025	MBS PMT		68,377	68,377	68,377	68,377	0	0	0	0	0	68,377	0	0	0	2,970	07/15/2031	1.A FE
.92916B-BE-3	INGIM 2012-4A A1R3	07/15/2025	MBS PMT		19,271	19,271	19,271	19,271	0	0	0	0	0	19,271	0	0	0	828	10/15/2030	1.A FE
<b>1099999999. Subtotal - Asset-Backed Securities - Financial Asset-Backed - Self-Liquidating - Non-Agency - CLOs/CBOs/CDOs (Unaffiliated)</b>					<b>514,544</b>	<b>514,544</b>	<b>511,249</b>	<b>514,227</b>	<b>0</b>	<b>316</b>	<b>0</b>	<b>316</b>	<b>0</b>	<b>514,544</b>	<b>0</b>	<b>0</b>	<b>0</b>	<b>22,558</b>	<b>XXX</b>	<b>XXX</b>
.12664J-AC-4	CNH 2022-C A3	09/15/2025	MBS PMT		139,094	139,094	139,070	138,912	0	182	0	182	0	139,094	0	0	0	4,931	04/17/2028	1.A FE
.33767W-AA-1	FKH 2021-SFR1 A	09/01/2025	MBS PMT		10,803	10,803	10,803	10,803	0	0	0	0	0	10,803	0	0	0	114	08/17/2038	1.A FE
.33768E-AA-0	FKH 2022-SFR3 A	09/01/2025	MBS PMT		5,861	5,861	5,495	5,861	0	50	0	50	0	5,861	0	0	0	172	07/17/2038	1.A FE
.33768N-AA-0	FKH 2022-SFR1 A	09/01/2025	MBS PMT		6,248	6,248	6,248	6,248	0	0	0	0	0	6,248	0	0	0	177	05/19/2039	1.A FE
.43730X-AA-2	HPA 2021-3 A	09/01/2025	MBS PMT		9,843	9,843	9,740	9,832	0	11	0	11	0	9,843	0	0	0	144	01/17/2041	1.A FE
.58768P-AC-8	MBART 2022-1 A3	09/15/2025	MBS PMT		98,512	98,512	98,493	98,444	0	68	0	68	0	98,512	0	0	0	3,405	08/16/2027	1.A FE
.63935B-AA-1	NAVSL 2020-HA A	09/15/2025	MBS PMT		5,219	5,219	5,218	5,217	0	2	0	2	0	5,219	0	0	0	45	01/15/2069	1.A FE
.63941T-AA-4	NAVSL 2020-EA A	09/15/2025	MBS PMT		21,128	21,128	20,917	21,079	0	49	0	49	0	21,128	0	0	0	238	05/15/2069	1.A FE
.63942K-AA-2	NAVSL 2021-GA A	09/15/2025	MBS PMT		17,410	17,410	17,384	17,397	0	13	0	13	0	17,410	0	0	0	184	04/15/2070	1.A FE
.64034Y-AB-7	NSLT 2021-DA AFX	09/20/2025	MBS PMT		24,749	24,749	24,747	24,732	0	18	0	18	0	24,749	0	0	0	268	04/20/2062	1.A FE
.74333T-AA-7	PROG 2021-SFR8 A	07/01/2025	MBS PMT		383	383	383	383	0	0	0	0	0	383	0	0	0	3	10/17/2038	1.A FE
.78433X-AA-8	SALTT 2021-1A AA	09/15/2025	MBS PMT		14,494	14,494	14,494	14,485	0	9	0	9	0	14,494	0	0	0	208	02/28/2033	1.C G
.78443C-CL-6	SLMA 2006-A A5	09/15/2025	MBS PMT		18,947	18,947	18,586	18,869	0	78	0	78	0	18,947	0	0	0	701	06/15/2039	1.A FE
.78443D-AD-4	SLMA 2007-A A4A	09/15/2025	MBS PMT		8,531	8,531	8,413	8,496	0	36	0	36	0	8,531	0	0	0	312	12/16/2041	1.A FE

E05.8

STATEMENT AS OF SEPTEMBER 30, 2025 OF THE Priority Health

**SCHEDULE D - PART 4**

Show All Long-Term Bonds and Stock Sold, Redeemed or Otherwise Disposed of During the Current Quarter

1	2	3	4	5	6	7	8	9	Change In Book/Adjusted Carrying Value					15	16	17	18	19	20	21	
									10	11	12	13	14								
CUSIP Identification	Description	Disposal Date	Name of Purchaser	Number of Shares of Stock	Consideration	Par Value	Actual Cost	Prior Year Book/Adjusted Carrying Value	Unrealized Valuation Increase/(Decrease)	Current Year's (Amortization)/Accretion	Current Year's Other Than Temporary Impairment Recognized	Total Change in Book/Adjusted Carrying Value (10 + 11 - 12)	Total Foreign Exchange Change in Book /Adjusted Carrying Value	Book/Adjusted Carrying Value at Disposal Date	Foreign Exchange Gain (Loss) on Disposal	Realized Gain (Loss) on Disposal	Total Gain (Loss) on Disposal	Bond Interest/Stock Dividends Received During Year	Stated Contractual Maturity Date	NAIC Designation, NAIC Designation Modifier and SVO Administrative Symbol	
..78449C-AA-6	SMB 2022-C A1A	09/15/2025	MBS PMT		11,229	11,229	11,229	11,212	0	17	0	17	0	11,229	0	0	0	335	05/16/2050	1.A FE	
..832070-AA-7	SMB 2024-D A1A	09/15/2025	MBS PMT		15,619	15,619	15,613	15,588	0	30	0	30	0	15,619	0	0	0	563	07/05/2053	1.A FE	
..87166P-AQ-4	SVNIT 2025-A2 A	09/16/2025	NORTHERN TRUST		228,401	225,000	224,952	0	0	4	0	4	0	224,957	0	3,445	3,445	2,750	05/15/2031	1.A FE	
..98164C-AD-1	WOART 2021-C A4	09/15/2025	MBS PMT		800,986	800,986	800,803	800,993	0	(7)	0	(7)	0	800,986	0	0	0	3,697	09/15/2027	1.A FE	
..44040H-AA-0	HORZN 2019-1 A	09/15/2025	MBS PMT		5,809	5,809	5,809	5,806	0	2	0	2	0	5,809	0	0	0	144	07/15/2039	2.C FE	
..46651N-AA-2	JOLAR 2019-1 A	09/15/2025	MBS PMT		6,230	6,230	6,230	6,221	0	9	0	9	0	6,230	0	0	0	165	04/15/2044	1.F FE	
..72353P-AA-4	PION 2019-1 A	09/15/2025	MBS PMT		7,877	7,877	7,877	7,867	0	10	0	10	0	7,877	0	0	0	204	06/15/2044	2.B FE	
..75363H-AA-9	RPTOR 2019-1 A	09/23/2025	MBS PMT		8,323	8,323	8,323	7,353	970	0	0	970	0	8,323	0	0	0	233	08/23/2044	4.A FE	
1119999999. Subtotal - Asset-Backed Securities - Financial Asset-Backed - Self-Liquidating - Other Financial Asset-Backed Securities - Self-Liquidating (Unaffiliated)					1,465,696	1,462,295	1,460,827	1,235,747	970	581	0	1,551	0	1,462,252	0	3,445	3,445	18,993	XXX	XXX	
1889999999. Total - Asset-Backed Securities (Unaffiliated)					9,103,248	9,116,776	9,057,993	8,461,668	970	6,749	0	7,719	0	9,102,180	0	1,070	1,070	211,172	XXX	XXX	
1899999999. Total - Asset-Backed Securities (Affiliated)					0	0	0	0	0	0	0	0	0	0	0	0	0	0	0	XXX	XXX
1909999997. Total - Asset-Backed Securities - Part 4					9,103,248	9,116,776	9,057,993	8,461,668	970	6,749	0	7,719	0	9,102,180	0	1,070	1,070	211,172	XXX	XXX	
1909999998. Total - Asset-Backed Securities - Part 5					XXX	XXX	XXX	XXX	XXX	XXX	XXX	XXX	XXX	XXX	XXX	XXX	XXX	XXX	XXX	XXX	XXX
1909999999. Total - Asset-Backed Securities					9,103,248	9,116,776	9,057,993	8,461,668	970	6,749	0	7,719	0	9,102,180	0	1,070	1,070	211,172	XXX	XXX	
2009999999. Total - Issuer Credit Obligations and Asset-Backed Securities					36,401,274	37,512,125	36,067,770	31,760,026	970	123,006	0	123,976	0	36,360,288	0	40,987	40,987	805,511	XXX	XXX	
4509999997. Total - Preferred Stocks - Part 4					0	XXX	0	0	0	0	0	0	0	0	0	0	0	0	0	XXX	XXX
4509999998. Total - Preferred Stocks - Part 5					XXX	XXX	XXX	XXX	XXX	XXX	XXX	XXX	XXX	XXX	XXX	XXX	XXX	XXX	XXX	XXX	XXX
4509999999. Total - Preferred Stocks					0	XXX	0	0	0	0	0	0	0	0	0	0	0	0	0	XXX	XXX
..315911-75-0	FIDELITY 500 INDX FD	07/22/2025	NORTHERN TRUST	22,822,710	5,000,000		2,265,154	4,660,169	(2,395,015)	0	0	(2,395,015)	0	2,265,154	0	2,734,846	2,734,846	28,551			
..41664T-44-6	HARTFORD INTL VALUE FD	07/22/2025	NORTHERN TRUST	133,749,440	3,000,000		1,947,392	2,364,690	(417,298)	0	0	(417,298)	0	1,947,392	0	1,052,608	1,052,608	0			
..461418-44-4	WCM FOCUSED INTL GIITH	07/22/2025	NORTHERN TRUST	111,940,300	3,000,000		1,807,836	2,435,821	(627,985)	0	0	(627,985)	0	1,807,836	0	1,192,164	1,192,164	1,283			
..922908-87-6	VANGUARD SMALL CAP IX FD	07/22/2025	NORTHERN TRUST	8,632,600	1,000,000		451,485	994,044	(542,559)	0	0	(542,559)	0	451,485	0	548,515	548,515	7,107			
5329999999. Subtotal - Common Stocks - Mutual Funds - Designations Not Assigned by the SVO					12,000,000	XXX	6,471,867	10,454,724	(3,982,857)	0	0	0	(3,982,857)	0	6,471,867	0	5,528,133	5,528,133	36,941	XXX	XXX
5989999997. Total - Common Stocks - Part 4					12,000,000	XXX	6,471,867	10,454,724	(3,982,857)	0	0	0	(3,982,857)	0	6,471,867	0	5,528,133	5,528,133	36,941	XXX	XXX
5989999998. Total - Common Stocks - Part 5					XXX	XXX	XXX	XXX	XXX	XXX	XXX	XXX	XXX	XXX	XXX	XXX	XXX	XXX	XXX	XXX	XXX
5989999999. Total - Common Stocks					12,000,000	XXX	6,471,867	10,454,724	(3,982,857)	0	0	0	(3,982,857)	0	6,471,867	0	5,528,133	5,528,133	36,941	XXX	XXX
5999999999. Total - Preferred and Common Stocks					12,000,000	XXX	6,471,867	10,454,724	(3,982,857)	0	0	0	(3,982,857)	0	6,471,867	0	5,528,133	5,528,133	36,941	XXX	XXX
6009999999 - Totals					48,401,274	XXX	42,539,637	42,214,750	(3,981,887)	123,006	0	0	(3,858,881)	0	42,832,155	0	5,569,120	5,569,120	842,452	XXX	XXX

E05.9

Schedule DB - Part A - Section 1 - Options, Caps, Floors, Collars, Swaps and Forwards Open

**N O N E**

Schedule DB - Part B - Section 1 - Futures Contracts Open

**N O N E**

Schedule DB - Part B - Section 1B - Brokers with whom cash deposits have been made

**N O N E**

Schedule DB - Part D - Section 1 - Counterparty Exposure for Derivative Instruments Open

**N O N E**

Schedule DB - Part D-Section 2 - Collateral for Derivative Instruments Open - Pledged By

**N O N E**

Schedule DB - Part D-Section 2 - Collateral for Derivative Instruments Open - Pledged To

**N O N E**

Schedule DB - Part E - Derivatives Hedging Variable Annuity Guarantees

**N O N E**

Schedule DL - Part 1 - Reinvested Collateral Assets Owned

**N O N E**

Schedule DL - Part 2 - Reinvested Collateral Assets Owned

**N O N E**



STATEMENT AS OF SEPTEMBER 30, 2025 OF THE Priority Health  
**SCHEDULE E - PART 2 - CASH EQUIVALENTS**

Show Investments Owned End of Current Quarter

1	2	3	4	5	6	7	8	9
CUSIP	Description	Restricted Asset Code	Date Acquired	Stated Rate of Interest	Maturity Date	Book/Adjusted Carrying Value	Amount of Interest Due and Accrued	Amount Received During Year
	TREASURY BILL		08/07/2025	4.162	10/30/2025	199,336	0	1,259
	TREASURY BILL		09/25/2025	3.978	11/28/2025	4,719,768	0	3,128
	TREASURY BILL		08/28/2025	4.228	10/09/2025	2,098,036	0	8,345
	TREASURY BILL		08/20/2025	4.189	10/28/2025	2,267,946	0	12,627
	TREASURY BILL		09/23/2025	3.974	11/04/2025	3,611,456	0	3,187
001999999	Subtotal - Issuer Credit Obligations - U.S. Government Obligations (Exempt from RBC)					12,896,542	0	28,546
	AQUITAINE FDG COMPANY LLC		08/15/2025	4.398	11/14/2025	1,019,550	0	5,821
	JOHN DEERE FINANCIAL SERVICES INC		09/23/2025	4.066	12/11/2025	1,349,191	0	1,218
	UNILEVER CAPITAL CORP		08/12/2025	4.366	10/20/2025	1,995,429	0	12,028
	UNILEVER CAPITAL CORP		09/02/2025	4.275	12/01/2025	2,482,081	0	8,519
	JOHN DEERE FINANCIAL SERVICES INC		08/04/2025	4.341	10/22/2025	2,179,519	0	15,137
008999999	Subtotal - Issuer Credit Obligations - Corporate Bonds (Unaffiliated)					9,025,770	0	42,723
048999999	Total - Issuer Credit Obligations (Unaffiliated)					21,922,312	0	71,269
049999999	Total - Issuer Credit Obligations (Affiliated)					0	0	0
050999999	Total - Issuer Credit Obligations					21,922,312	0	71,269
261908-10-7	DREYFUS TREAS CASH MGMT #0521		09/30/2025	4.003		50,687,588	0	4,476,295
4812A0-37-5	JP MORGAN 100% UST-CAP #3163		09/30/2025	4.014		20,282,477	0	3,880,151
60934N-50-0	FEDERATED TREAS OBLIG #68		09/30/2025	3.980		242,296,256	0	3,515,436
665279-87-3	MFB NTHN INSTL FDS TREAS-PREM CL		09/30/2025	3.950		16,619,557	0	369,948
820999999	Subtotal - Exempt Money Market Mutual Funds - as Identified by the SVO					329,885,878	0	12,241,830
858999999	Total Cash Equivalents (Unaffiliated)					351,808,190	0	12,313,099
859999999	Total Cash Equivalents (Affiliated)					0	0	0
860999999	Total Cash Equivalents					351,808,190	0	12,313,099