



What do you need to know to manage the fishery? The role of Michigan's Fisheries Research Program

Gary Whelan
Fisheries Division
July 2022



Key Components

- Policy and purpose
- Staff and facilities
 - Broadly trained
- Expertise in a broad array of areas
 - Diverse portfolio
- Excellence in information produced
 - Peer-reviewed science for management



Mission

"To provide information, models, technical analyses, and expert advice to make possible science-based management of Michigan's fishery resources."



How Done

- By providing the following information to fisheries managers:
 - Timely fisheries, aquatic community, and habitat information from surveys and assessments
 - Better ways to manage and sample fisheries
 - Provide information about key fisheries topics to the public
 - Timely, scientifically-based and peer-reviewed information and decision support tools to decision-makers



Key Mission Areas

- Regulation evaluation and assessment
- Stocking evaluation and assessment
- Landscape analysis to support management
- Habitat analysis
- Climate change analysis
- Fish community and population assessment
- Great Lakes fisheries assessment
- Human dimensions and socioeconomics
- Invasive species
- Supporting Tribal Consent Decree Implementation



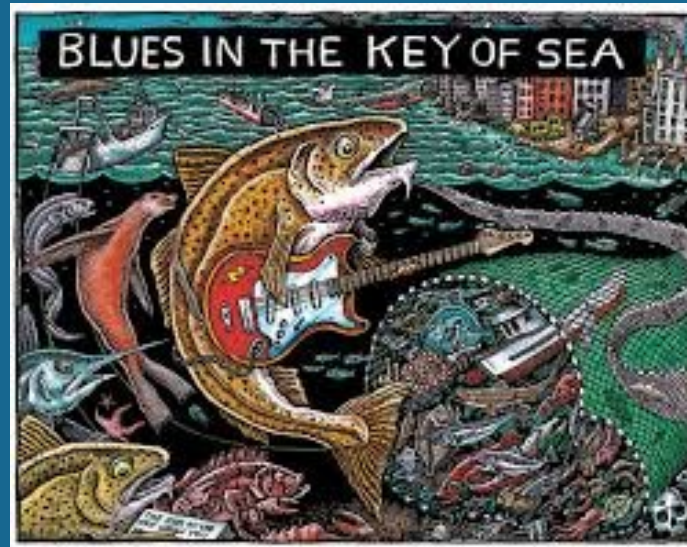
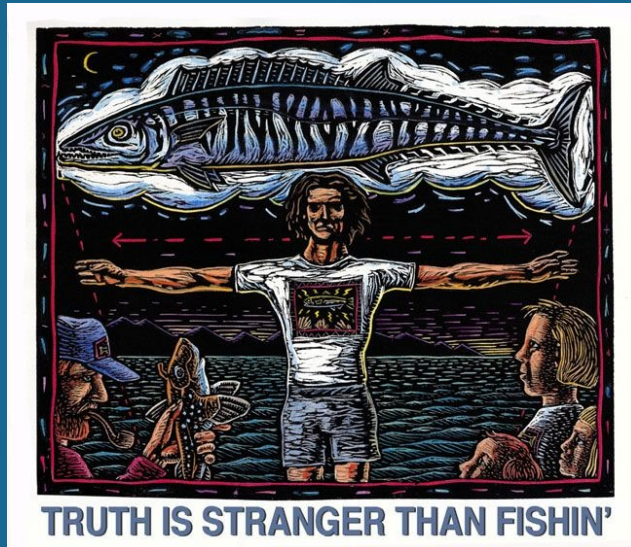
Statewide Responsibility Across Michigan's Aquatic Resources

- Aquatic
 - Great Lakes (38,575 sq. miles)
 - Approx. 11,000 inland lakes (1,305 sq. miles)
 - 36,000-72,000 miles of streams/flowing water
- 154 species of fish
 - 27 non-native species
- Many species of invertebrates
 - 10 species of crayfish
 - 43 species of native mussels.....



Research Section

- Who are these people
- What do they do
- Where do they work



Research Staff and Budget

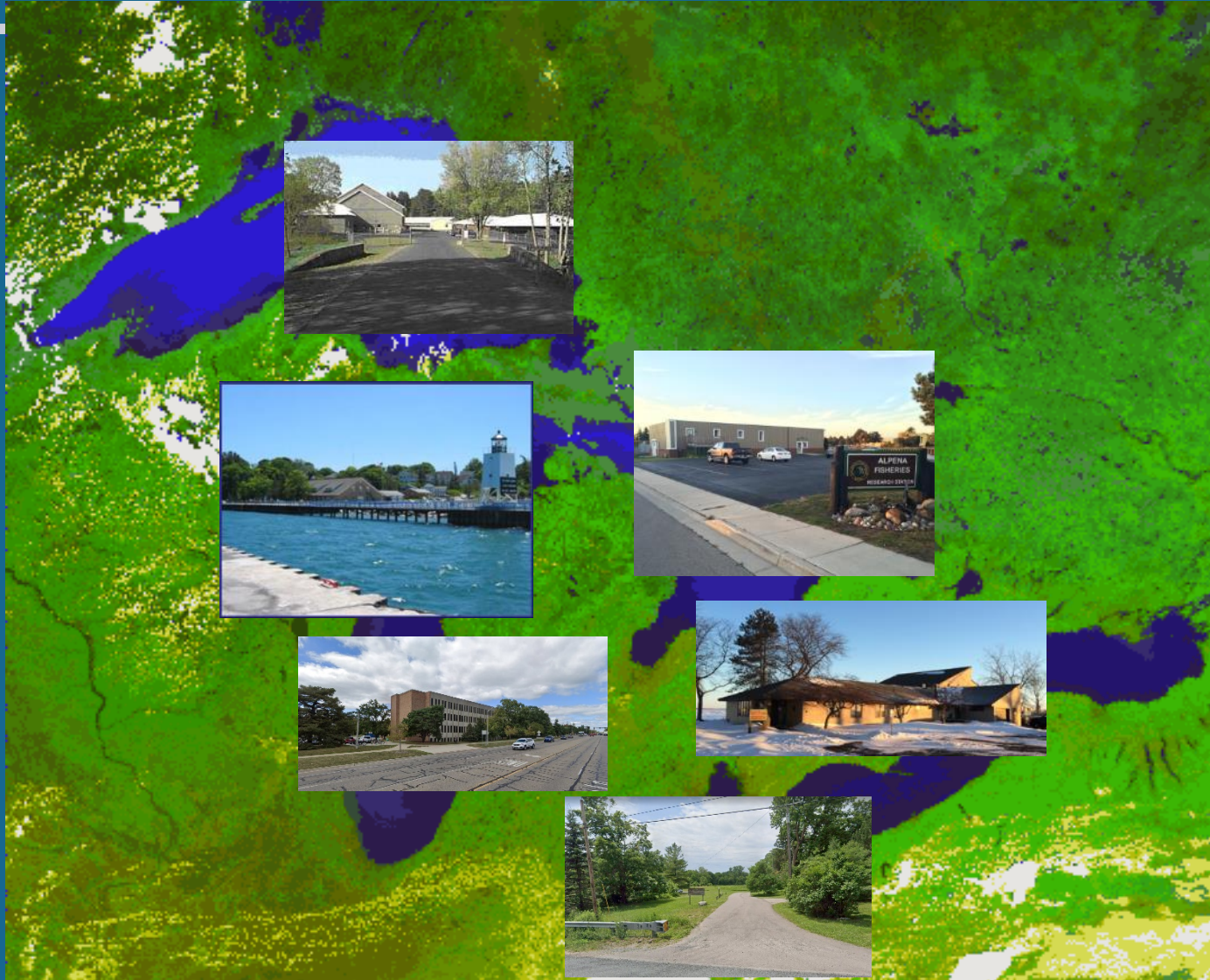
- 46 staff and 28 creel clerks
 - Managers/Senior Researchers
 - MSU faculty
 - Biologists
 - Boat Captains
 - Technicians
 - GIS specialist
 - Librarian
 - Trades Helper
 - Creel Clerks
- Annual Budget = \$8.4 million
 - 22 DJ Projects
 - 4 SWG Projects
 - 5-10 Externally Funded Projects



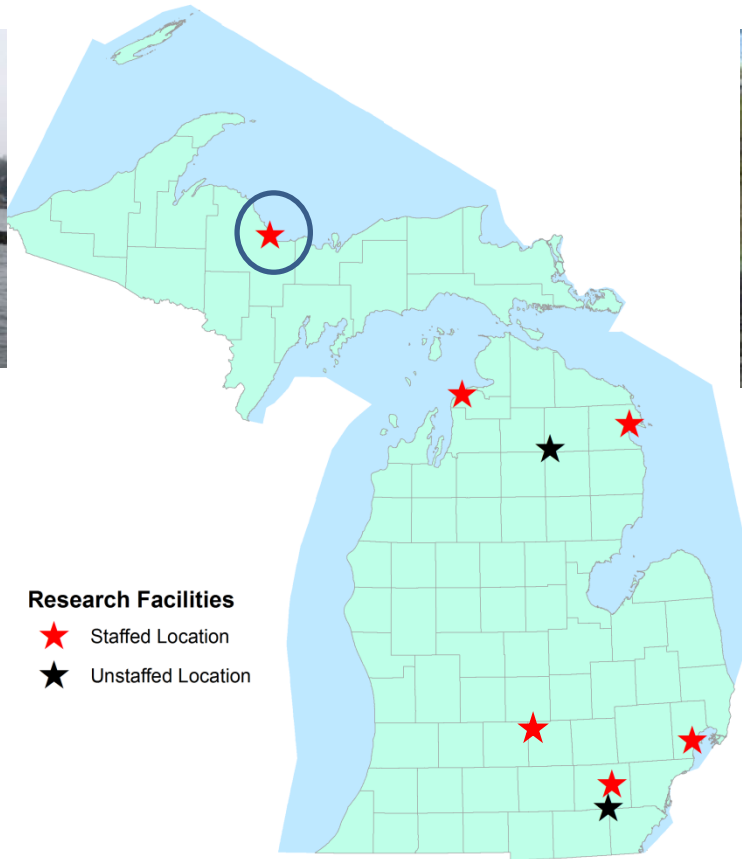
We are located throughout the state



What gets done where? Species, Waters, Topics



Marquette Fisheries Research Station

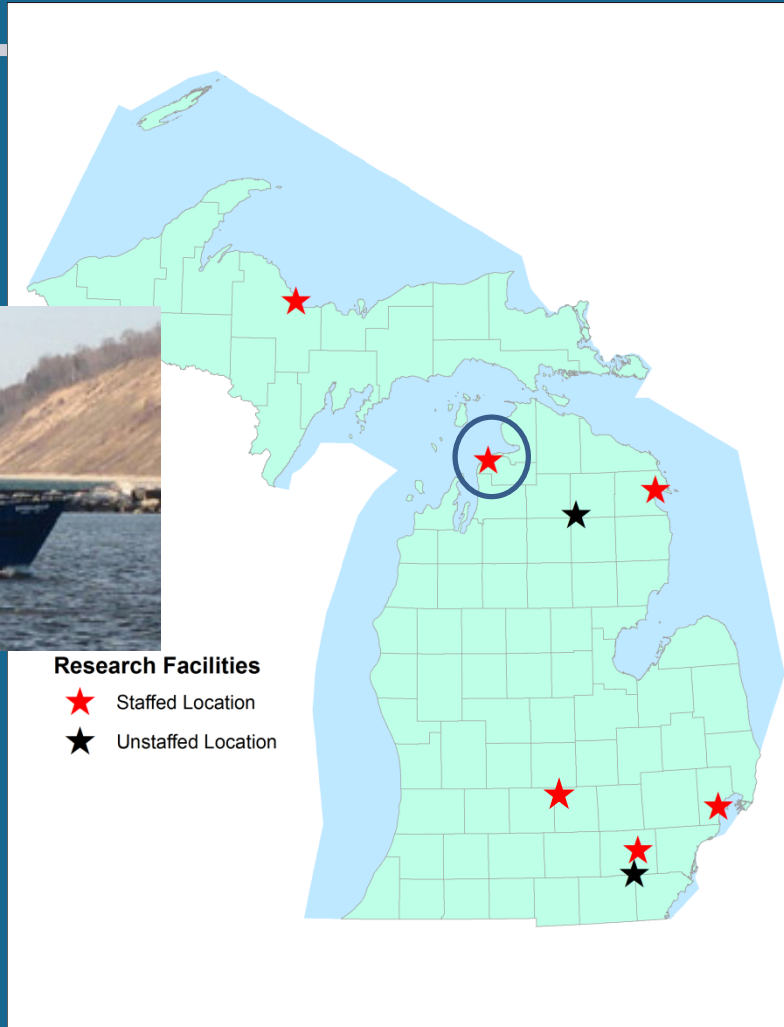


Marquette Fisheries Research Station

- Key Species
 - Lake Trout
 - Lake Whitefish and Cisco
 - Lake Sturgeon
 - Walleye
 - Smallmouth Bass
 - Brook and Brown Trout
 - Arctic Grayling
- Key areas of emphasis
 - Population and movement dynamics
 - Great Lakes and inland trout regulation analysis
 - Rehabilitating species
 - Habitat mapping
 - Stream trout
 - Water withdrawal analysis
 - Support Tribal Consent Decree data needs
- Researchers – Baker, Sitar, Zorn

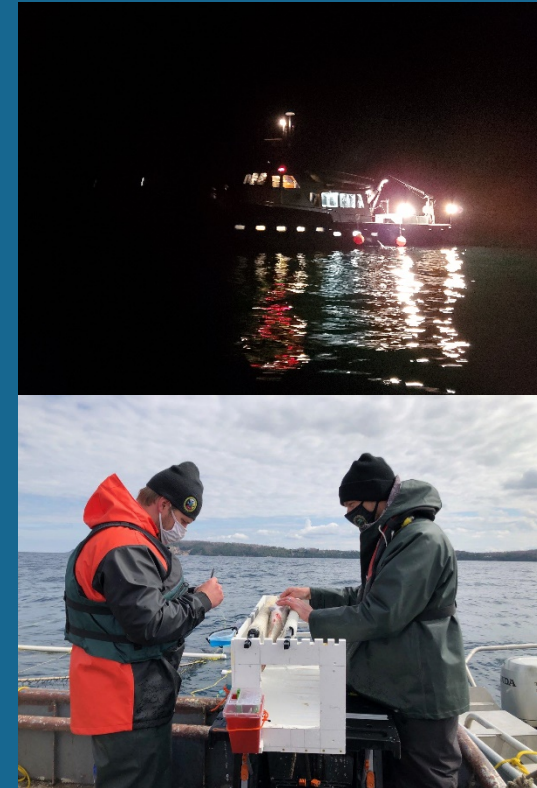


Charlevoix Fisheries Research Station



Charlevoix Fisheries Research Station

- Key Species
 - Pacific salmonids
 - Lake Trout
 - Lake Whitefish, Bloater and Lake Herring
 - Alewives
 - Round Goby
 - Yellow Perch
 - Smallmouth Bass
- Key areas of emphasis
 - Population and movement dynamics
 - Nearshore community ecology
 - Food webs and forage fish stability
 - Great Lakes regulation analysis
 - Support Tribal Consent Decree data needs
- Researchers – Clapp, Turschak, Jonas



Alpena and Hunt Creek Fisheries Research Stations

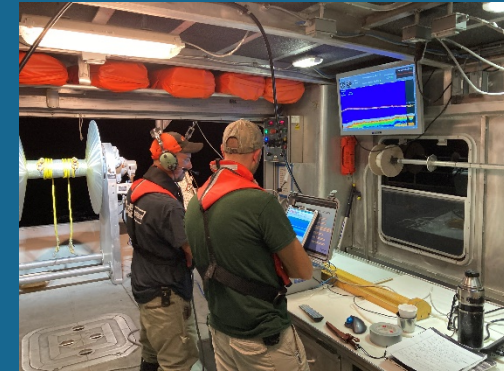


- Research Facilities**
- ★ Staffed Location
 - ★ Unstaffed Location

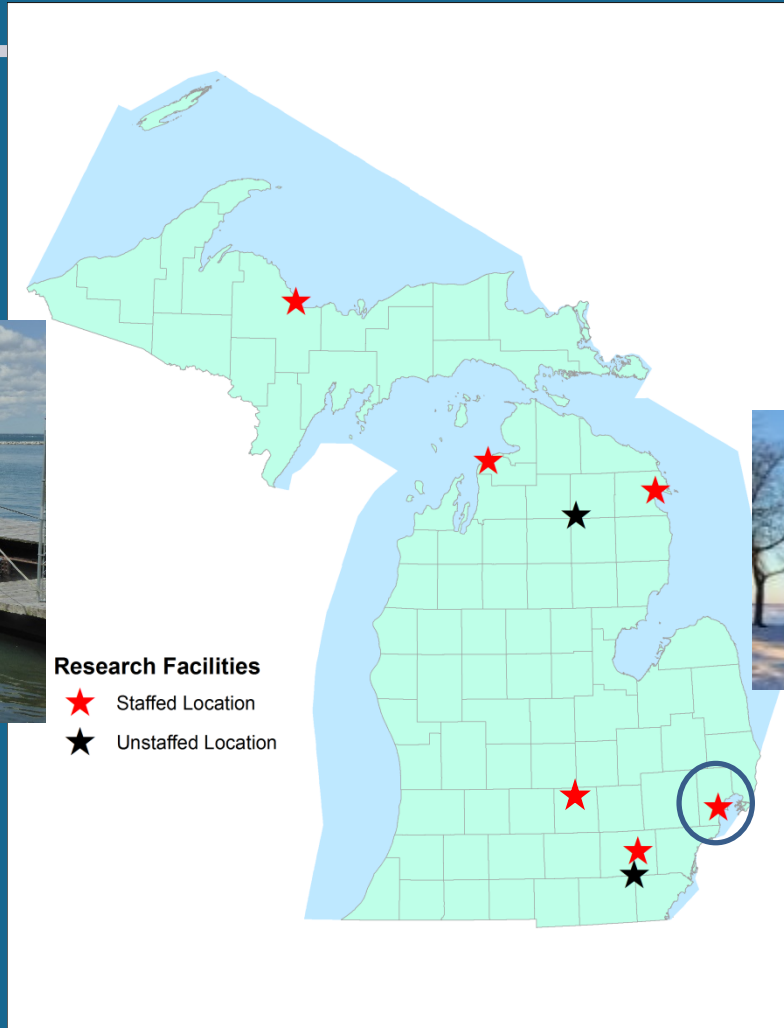


Alpena and Hunt Creek Fisheries Research Stations

- Key Species
 - Lake Trout
 - Lake Whitefish and Lake Herring
 - Pacific salmonids
 - Walleye
 - Yellow Perch
 - Round Goby and other forage species
 - Arctic Grayling
- Key areas of emphasis
 - Population and movement dynamics
 - Food webs and forage fish stability
 - Species rehabilitation
 - Cormorant control assessment
 - Great Lakes – Saginaw Bay regulation analysis
 - Support Tribal Consent Decree data needs
- Researchers – He, Fielder



Lake St. Clair Fisheries Research Station



Lake St. Clair Fisheries Research Station

- Key Species
 - Lake Sturgeon
 - Walleye
 - Yellow Perch
 - Smallmouth Bass
 - Muskellunge
 - Brook and Brown Trout
- Key areas of emphasis
 - Population and movement dynamics
 - Food webs and forage fish stability
 - Species rehabilitation
 - Species of Greatest Conservation Concern
 - Great Lakes – Lake Erie regulation analysis
 - Acoustic habitat mapping
 - Stream fish dynamics
- Researchers – Wills, Hessenauer, Briggs



Institute of Fisheries Research and Saline Fisheries Research Station



Institute of Fisheries and Saline Fisheries Research Station

- Key Species
 - Lake Herring
 - Inland lake fish communities
 - Freshwater mussels
- Key Areas of Emphasis
 - Inland lake, river and stream ecology and analysis
 - Landscape analysis
 - Climate change and adaptation
 - Sampling standardization
 - State Wildlife Action Plan and species of greatest conservation need
 - Creel Census program research and development
 - Division publications and library
- Researchers – Su, Wehrly



Lansing and MSU Stations (PERM and QFC)



Lansing and MSU Stations (PERM and QFC)

- Key Species
 - Lake Sturgeon
 - Arctic Grayling
 - Red Swamp Crayfish
- Key Areas of Emphasis
 - Population and decision support modeling including SDM
 - Genetics analysis
 - Fish health and pathogen analysis
 - Landscape analysis development
 - Climate change and adaptation
 - Invasive species
 - Stream fish and habitat analysis
 - Statistical analysis of large and complex datasets
 - Creel Census
 - Ecological and fisheries history
 - Environmental analysis of development projects
- Researchers – Claramunt, Whelan, Bence, Brendan, Infante, Hayes, Loch, Roth, Scribner





Questions or Comments

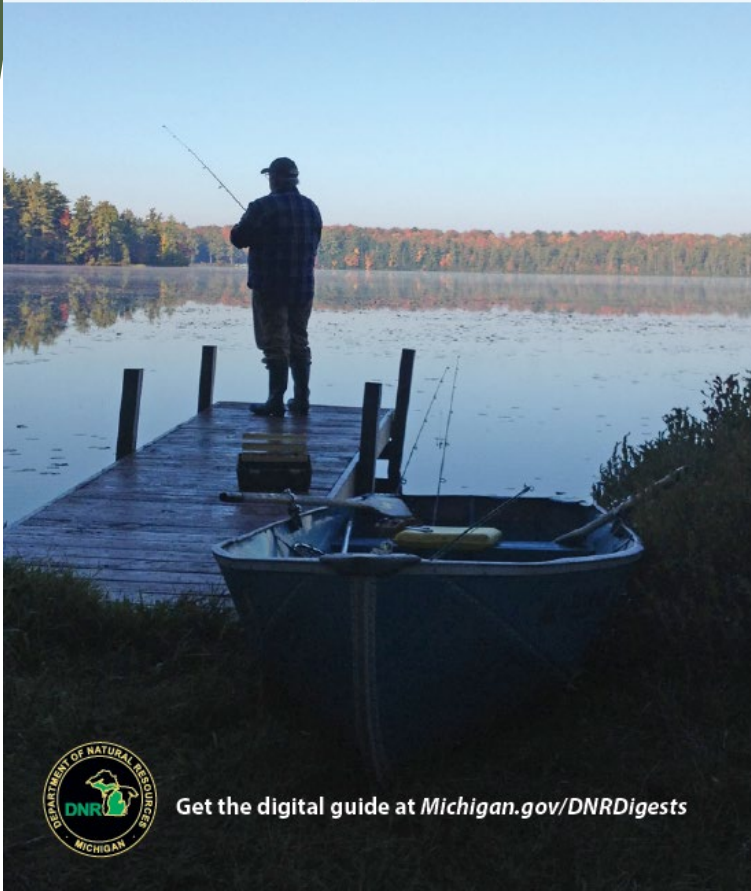
Gary Whelan
whelang@michigan.gov
517-242-2764



2022

Michigan Fishing Guide

Rules apply from April 1, 2022 – March 31, 2023



Get the digital guide at Michigan.gov/DNRDigests

Upcoming Fisheries Orders Update

Fisheries Division

Seth Herbst, Ph.D.

Regulatory Affairs Unit Manager

July 14, 2022

Fisheries Order Proposal Process

► Addressing biological and/or social concerns



Local Fisheries Division review



Proposal form developed



Fisheries Division Basin Team Review



Stakeholder/Angler input ; Advisory Committee feedback ; Social surveys



Update Proposal form



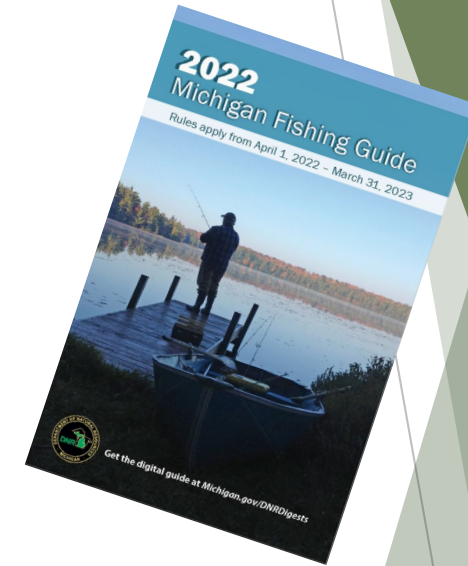
Multi-division Fisheries Regulation Review Committee



Fisheries Chief approval



NRC



Fisheries Order “Screening” Considerations

Regulation ideas & proposals

Biological rationale and effect on fish population(s)
Public trust responsibility, supporting data, alignment with management goals

Effect on angler opportunities &
enforceability

Angler support
Representative feedback

Regulatory
complexity

Fisheries Order Recommendation(s)



Upcoming Fisheries Orders Recommendations

FO recommendations in August

- FO-204: Spawning Closures
 - 3 recommendations: adjust closures on Houghton Lake tributaries and a boundary issue
- FO-206: Special Regulations for Warmwater species on Select Waters
 - 16 recommendations: Northern Pike, Muskellunge, Bass
- FO-215: Statewide Regulations for Warmwater Species
- FO-226: Hook and Line Restrictions During Walleye Spawning Runs
 - Each have 1 recommendation related to regulatory consolidation



Upcoming Fisheries Orders Recommendations

FO recommendations in September

- FO-200: Inland River and Stream - Trout and Salmon Regulations
 - 3 recommendations: Changing types and address boundary issue
- FO-210: Designated Trout Streams for Michigan
 - 4 recommendations: Remove from designation and addressing naming issue
- FO-254: Inland Lake - Trout and Salmon Regulations
 - 3 recommendations: Changing types

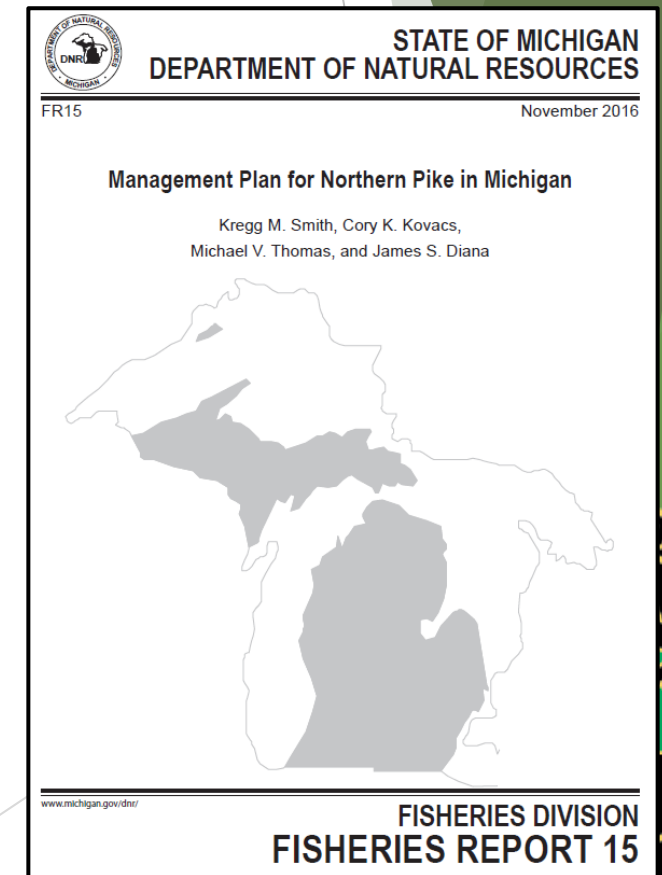


Upcoming Fisheries Orders Recommendations

- FO-206: Special fishing regulations for warmwater species on select waters
 - Several Northern Pike regulatory recommendations
 - Align with objectives described within the Northern Pike Management Plan
 - Supported with data obtained from fisheries surveys or through partnerships with anglers
- Proposals that lack supporting biological data
 - Request staff to conduct surveys or work with anglers to obtain data

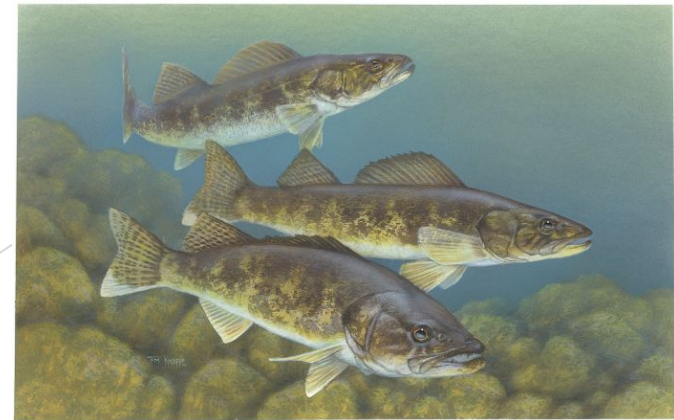


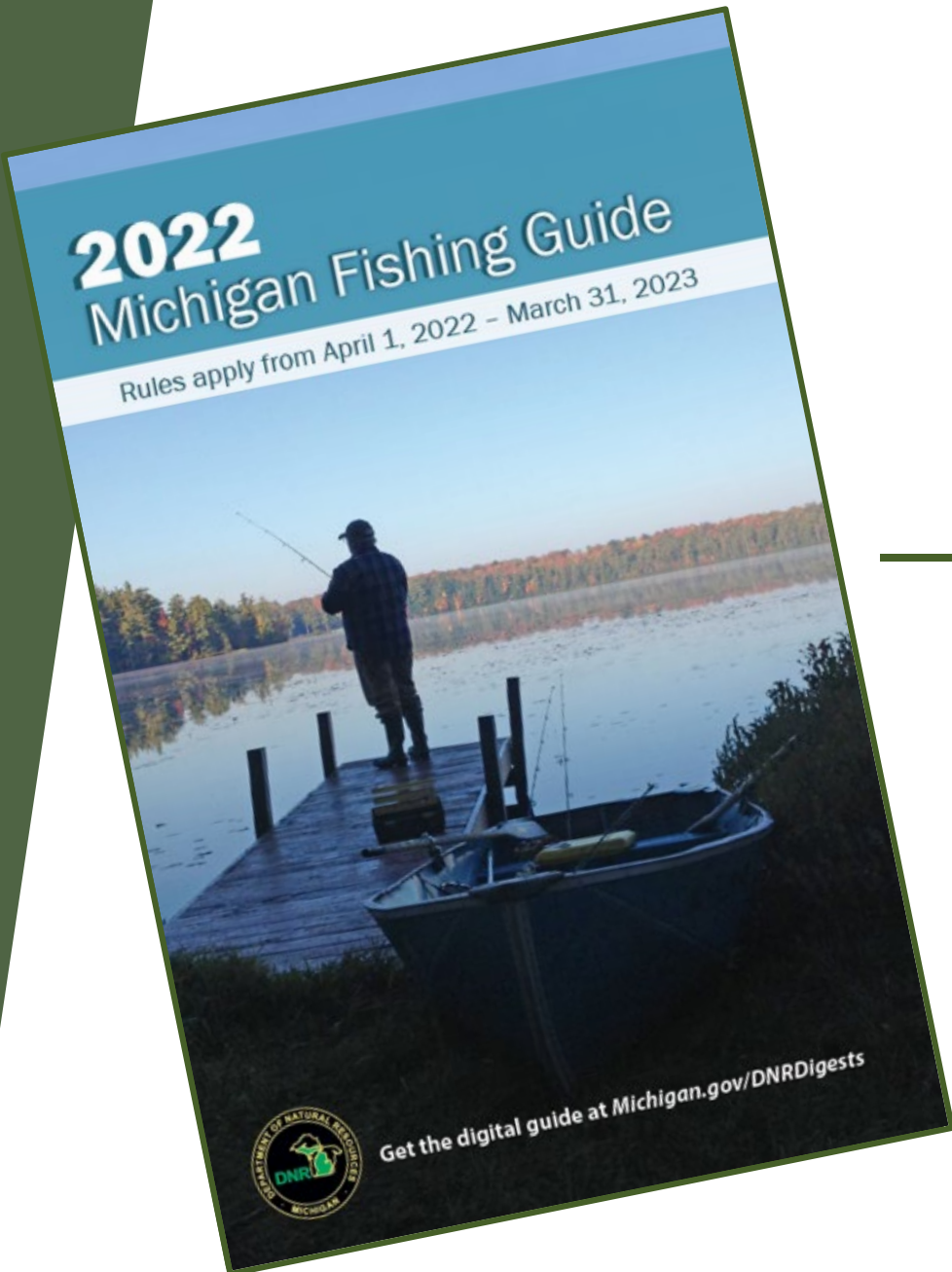
Illustration provided by Joseph R. Tomelleri ©



Saginaw River Walleye Regulations

- Fisheries Order 206.22
 - Expanded Walleye harvest opportunity in the Saginaw River
 - Six additional weeks
- Saginaw Bay and Saginaw River will have the same regulations in 2023
 - All year possession season
 - 8 fish daily possession limit and 13” min size limit
- Currently Walleye regulations for these waters are contained within three Fisheries Orders
- Recommendation will maintain same Walleye regulations, but will consolidate into FO-215





Thank You!

Questions?

Seth Herbst, Ph.D.
ASRA Unit Manager
Herbsts1@Michigan.gov



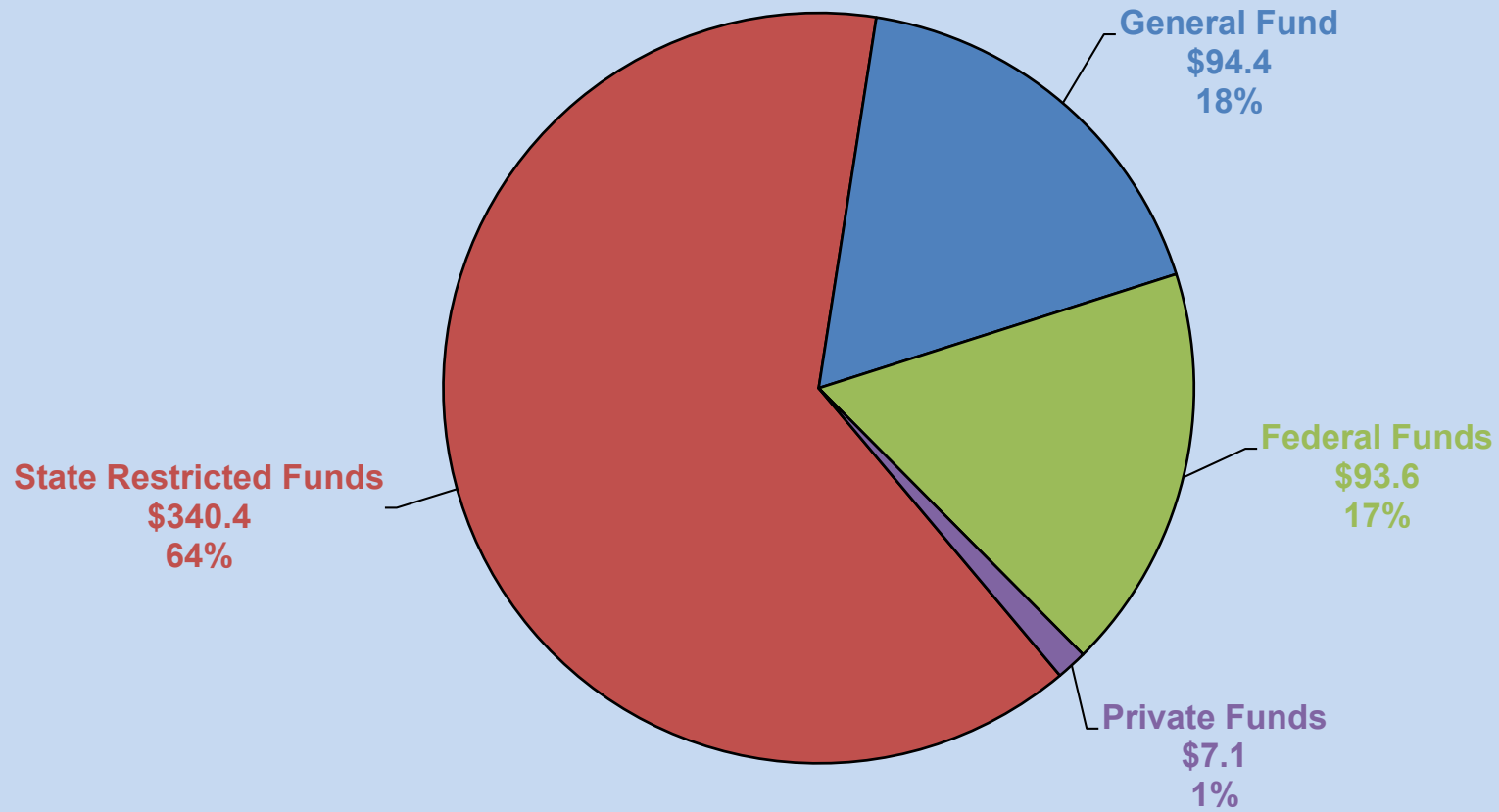
Budget Update

Chief Budget Officer
Erik Eklund

July 14, 2022



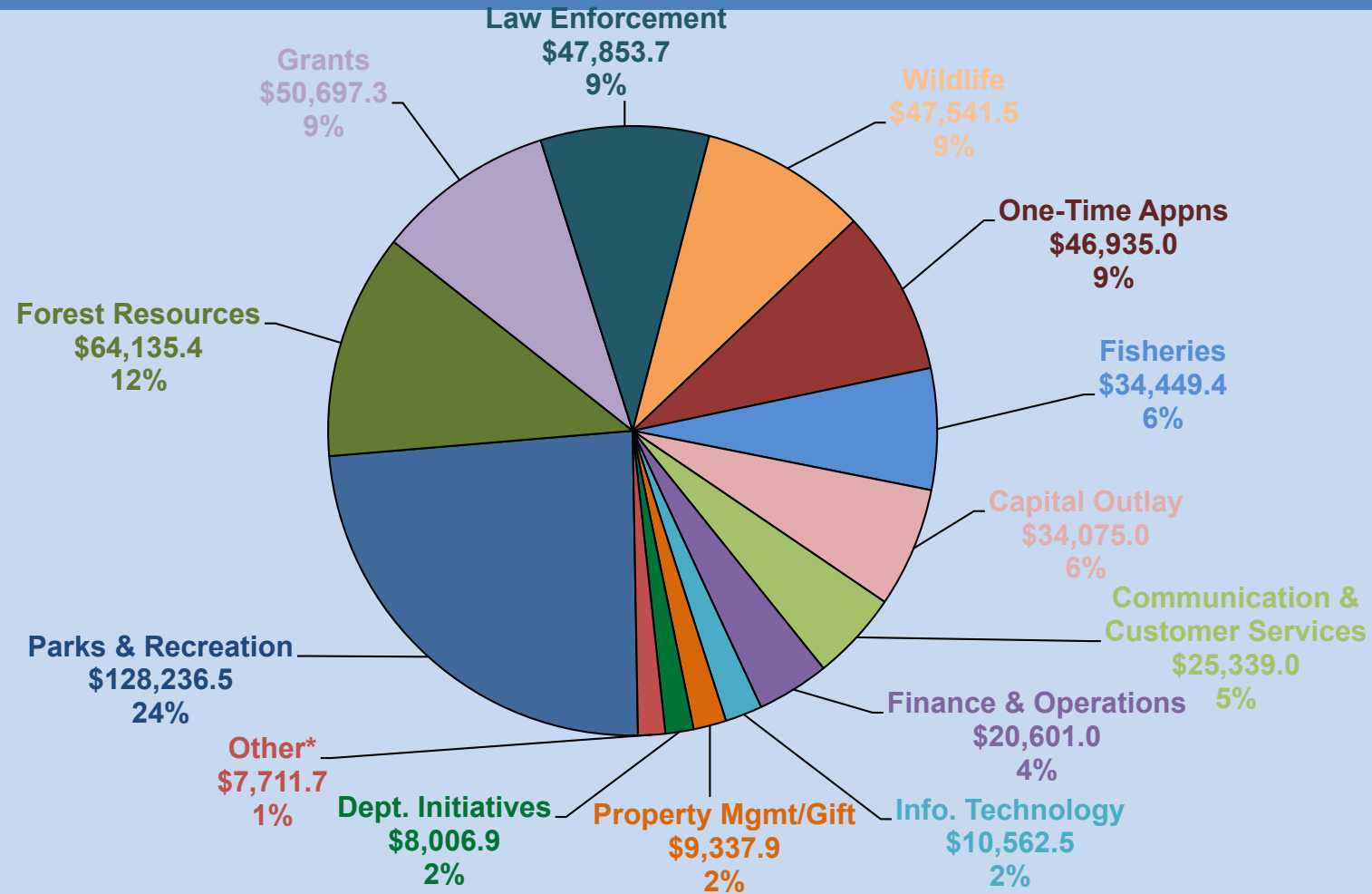
FY 2023 DNR Budget by Fund Type



Total Funding: \$535.5

(Figures in millions)

FY 2023 DNR Budget by Program



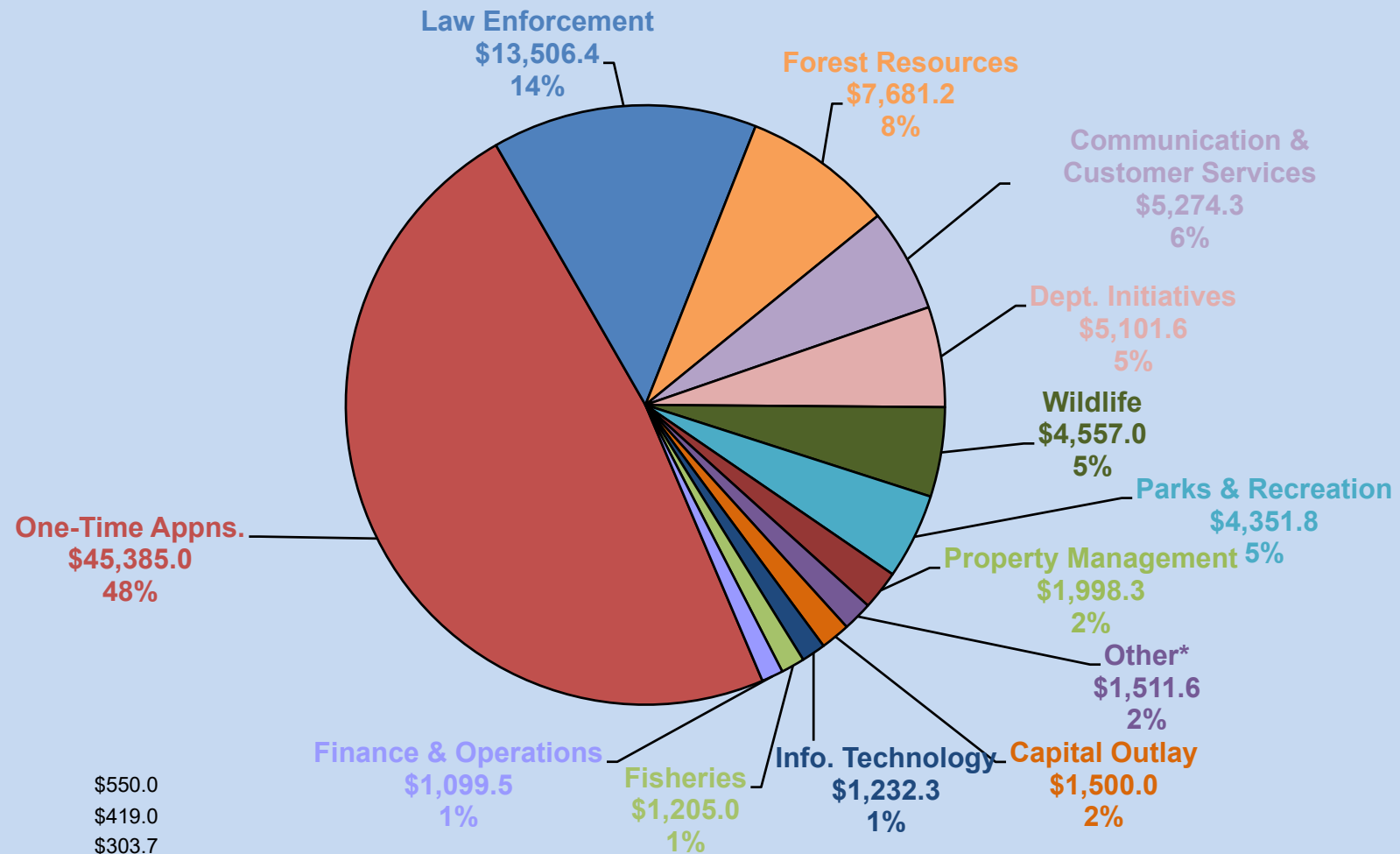
***Other**

Executive	\$3,285.5
Mackinac Island	\$2,227.6
Accounting Service Center	\$1,505.1
Legal Services	\$693.5

Total Appropriations: \$535,482.8

(Figures in thousands)

FY 2023 DNR General Fund Budget



*Other

Grants	\$550.0
Mackinac Island	\$419.0
Executive	\$303.7
Accounting Service Center	\$142.6
Legal Services	\$96.3

(Figures in thousands)

Total General Fund Appropriations: \$94,404.0

Ongoing Investments

- State Park System Operations: \$13.6 million increase from restricted funds
- Capital Outlay – Infrastructure Improvements: \$6.9 million increase from various funds
- State Trail Operations: \$3.1 million increase from restricted funds
- Short-Term Worker Recruitment and Retention: \$906,100 increase from restricted funds
- Michigan History Center Programs in State Parks: \$850,000 increase from restricted funds

Ongoing Investments

- Emergency Response and Wildfire Suppression: \$751,900 increase from General Fund
- Tribal Relations and Fisheries Co-Management: \$652,800 increase from General Fund
- Body Cameras for Conservation Officers: \$600,000 increase from General Fund
- MiConnect Outdoors Credit Card Processing Fees, Maintenance, and Support: \$350,000 increase from restricted funds
- Spending Authorization for Pheasant License Fee Revenue: \$100,000 increase from restricted funds

One-Time Investments

- Fish Hatchery Infrastructure Improvements: \$30 million from General Fund
- Natural Resources Equipment Modernization: \$11.6 million from \$1.6 million restricted funds and \$10 million General Fund
- Great Lakes Vessel Modernization: \$4 million from General Fund

One-Time Investments

- Chronic Wasting Disease Testing: \$500,000 from General Fund
- Digitization of Archival Records: \$485,000 from General Fund
- Body Cameras for Conservation Officers: \$400,000 from General Fund

Boilerplate Changes

- Sec. 507. Antlerless Deer License Discounts
 - Deleted
- Sec. 1201. Chronic Wasting Disease Testing
 - Retained; requires the DNR to have a check station or drop box in certain areas before the 2023 deer hunting season

FY 2022 Supplemental Appropriations

- Shooting Range Development, Enhancement, and Restoration Projects: \$7.65 million from federal
- Short-Term Worker Recruitment and Retention: \$6.4 million from federal and restricted funds
- Increased Fuel Costs: \$845,000 from General Fund



Questions?

Learn more about outdoor recreation opportunities
at Michigan.gov/DNR.