

Forest Roads Inventory Update

Mark Monroe

PRCSF Unit Manager/Road Inventory Lead

Forest Resources Division

NRC 01/10/2023



Public Act 288

- Signed by Gov. Snyder in 2016
- Requires determination of motorized and non-motorized use restrictions
- Requires DNR to post maps and mileage open to motorized use each year
- Requires an inventory of forest roads by region, including:
 - Location
 - Condition
 - Development Level

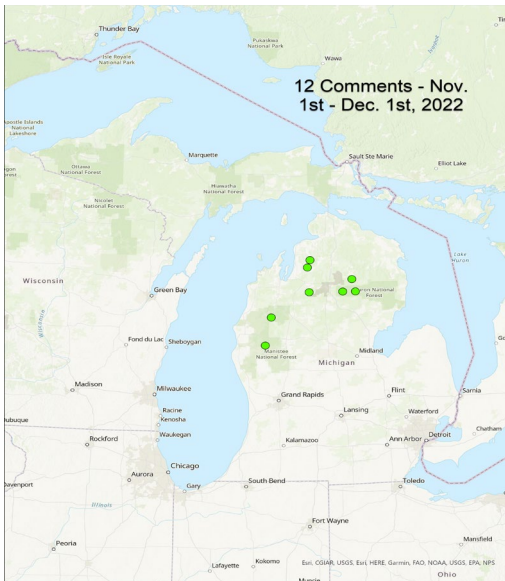
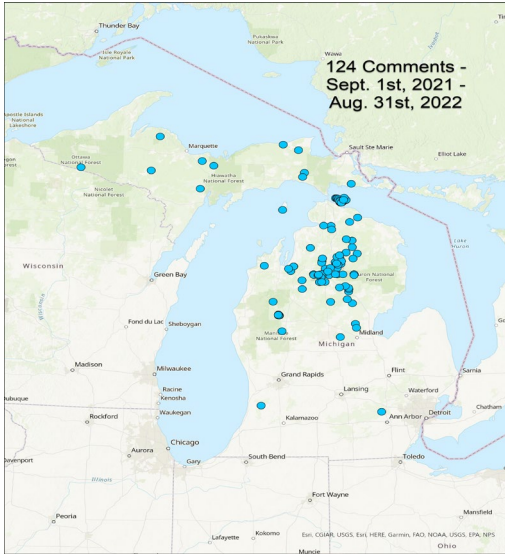




Inventories Completed

- Dec. 14, 2017: LUOD designated roads open to ORVs in the NLP
- Dec. 13, 2018: LUOD identified UP and SLP roads open to ORVs
- Maps are fine-tuned each year
- Roads may be opened or closed to ORVs or other vehicles





Process for Change

- Status changes can be initiated by public comment, Department staff, stakeholders, tribal governments or local units of government
- Multi-disciplinary DNR team reviews and recommends changes
- 30-day public review each year before proposed changes are made
- DNR received 124 comments from Sept. 1, 2021-Aug. 31, 2022; 12 comments were received during the Nov. 1-Dec. 1, 2022 public review phase



2022 Proposals

- Remove 28.3 miles of road segments from state forest maps for conventional & ORV use
- Delete 23.3 miles of roads due to data cleanup of non-existing or duplicate roads
- Add 39.7 miles of roads to maps that were not previously included in the inventory; 26.5 miles will be open to ORV use, 12.9 miles closed to ORV use, and 0.3 miles open to seasonal ORV.

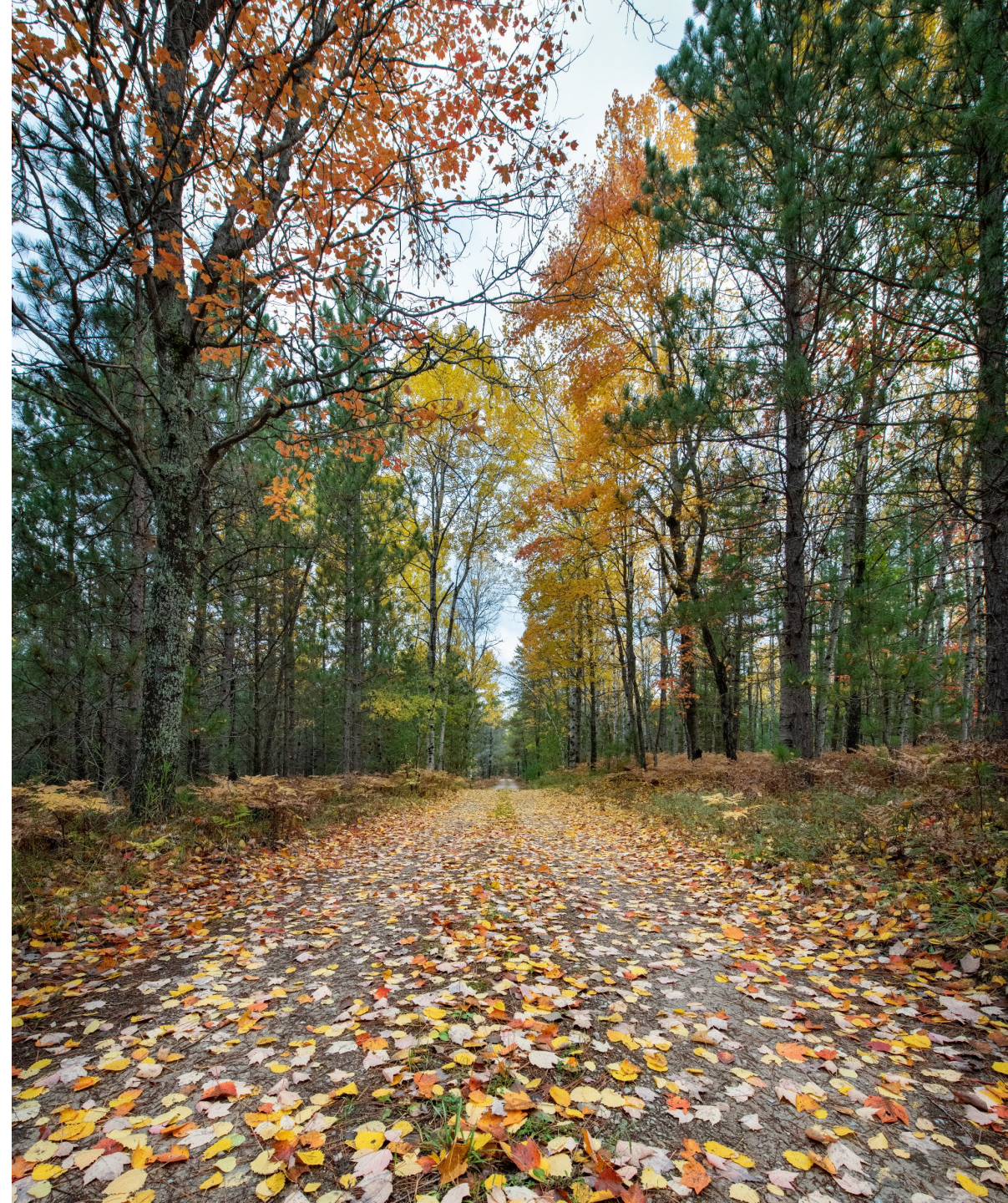


Miles of Road by Region

- Upper Peninsula: 5,503.4 miles open to ORV use out of 5,612.8 total miles
- Northern Lower Peninsula: 6,109.9 miles open to ORV use out of 7,309.2 total miles
- Southern Lower Peninsula: 10.1 miles open to ORV use out of 365 total miles

What's Next?

- Director's action in February
- Maps reflecting approved changes will be published online by April 1, 2023
- Signs will be posted on state-managed forest roads closed to ORV use, including seasonal closures



Questions?

