

# Summary of Upcoming Fisheries Order Recommendations



Seth Herbst, Ph.D.

Fisheries Division

Research Section and Regulatory Affairs Unit Manager

June 8, 2023

**2023**

Michigan Fishing Guide

Rules apply from April 1, 2023 – March 31, 2024



Get the digital guide at [Michigan.gov/DNRDigests](https://Michigan.gov/DNRDigests)

# Fisheries Order Proposal Process

- Addressing biological and/or social concerns



Local Fisheries Division review



Proposal form developed



Fisheries Division Basin Team Review



Stakeholder/Angler input ; Advisory Committee feedback ; Social surveys



Update Proposal form



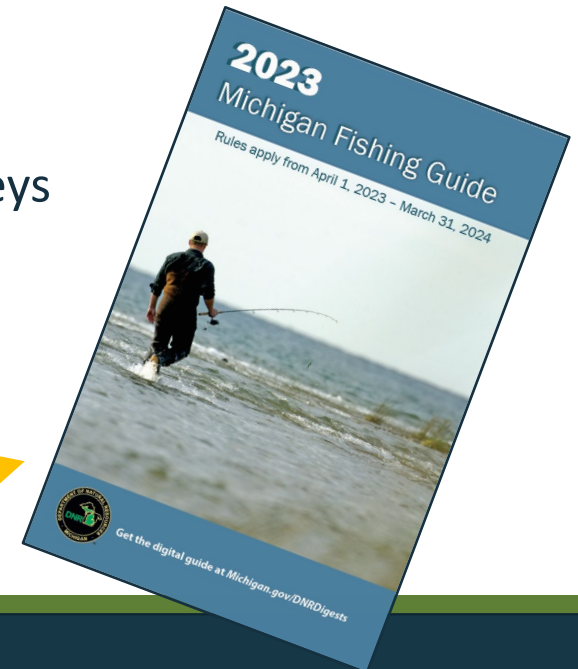
Multi-division Fisheries Regulation Review Committee



Fisheries Chief approval



NRC



# Fisheries Order “Screening” Considerations

---

Regulation ideas & proposals

Biological rationale and effect on fish population(s)  
Public trust responsibility, supporting data, alignment with management goals

Effect on angler opportunities &  
enforceability

Angler support  
Representative feedback

Regulatory  
complexity



Fisheries Order Recommendation(s)

# Upcoming Fisheries Orders Recommendations

---

- 13 recommendations associated with 10 Fisheries Orders
  - Primary purposes for proposed changes:
    - Adjust regulatory boundaries for clarity
    - Add clarity to existing regulations
    - Increase angler opportunities
    - Align regulations with waterbody specific management strategies



# Upcoming Fisheries Orders Recommendations

---

## FO recommendations in **August**

- FO-206: Special Fishing Regulations for Warmwater Species on Select Waters
  - Northern Pike related recommendations (x2)
- FO-215: Statewide Warmwater Species Regulations
  - Include “and tributaries” to the lower Saginaw River regulation that allowed for expanded Walleye harvest opportunities in the spring.
- FO-219: Bow, Spear, and Crossbow Fishing Regulations
  - Editorial change to adjust boundary name



Illustration provided by Joseph R. Tomelleri ©

# Upcoming Fisheries Orders Recommendations

---

## FO recommendations in **August**

- FO-229: Netting Regulations
  - Editorial change to adjust boundary name
- FO-240: Statewide Sturgeon Regulations
  - Allow Catch-and-Immediate-Release fishing for Lake Sturgeon in the Ontonagon River



# Upcoming Fisheries Orders Recommendations

---

## FO recommendations in **September**

- FO-200: Inland River and Stream – Trout and Salmon Regulations
  - Adjust regulatory boundary because of dam removal
- FO-204: Spawning Closures
  - Adjust regulatory boundary to increase clarity among anglers
- FO-252: Statewide – Lake Whitefish, Round Whitefish, Cisco, Rainbow Smelt and Arctic Grayling Regulations
  - Remove language that prohibits anglers from “attempting to take” Arctic Grayling
  - Proactive measure associated with Michigan Arctic Grayling Initiative

# Upcoming Fisheries Orders Recommendations

---

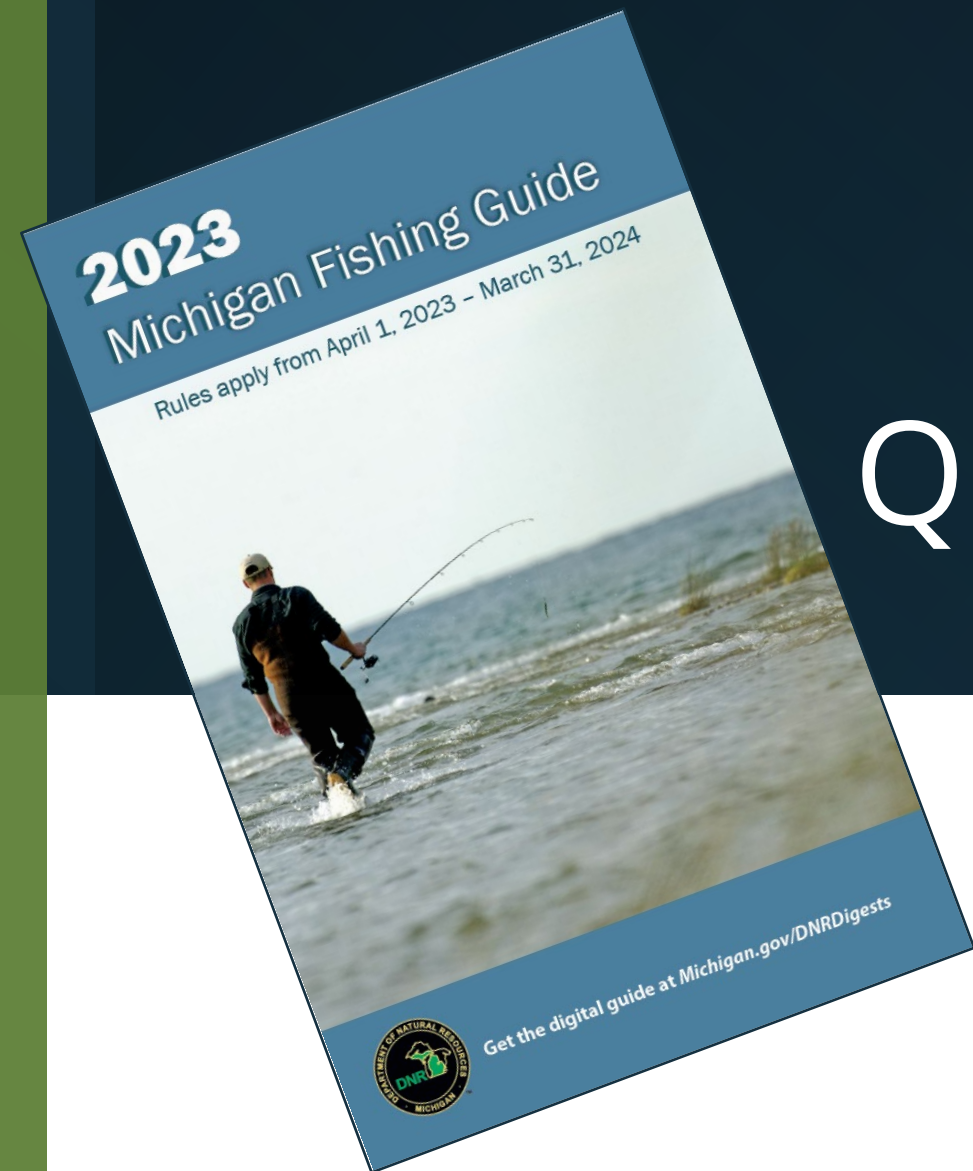
## FO recommendations in **September**

- FO-253: Great Lakes and Connecting Waters – Trout and Salmon Regulations
  - Combine daily possession limits for Lake Trout and Splake in all Great Lakes
  - Combined daily possession limits would match current limits for Lake Trout
- FO-254: Inland Lakes – Trout and Salmon Regulations
  - Align regulations with waterbody specific management strategies (x2)
  - Modification because of change in ownership





# Questions



Seth Herbst, Ph.D.

Fisheries Division

HerbstS1@michigan.gov



# 2023 Moose Population Survey



Tyler Petroelje, PhD, Wildlife Research Specialist  
Chad Stewart, Moose Management Specialist  
Wildlife Division  
June 8, 2023





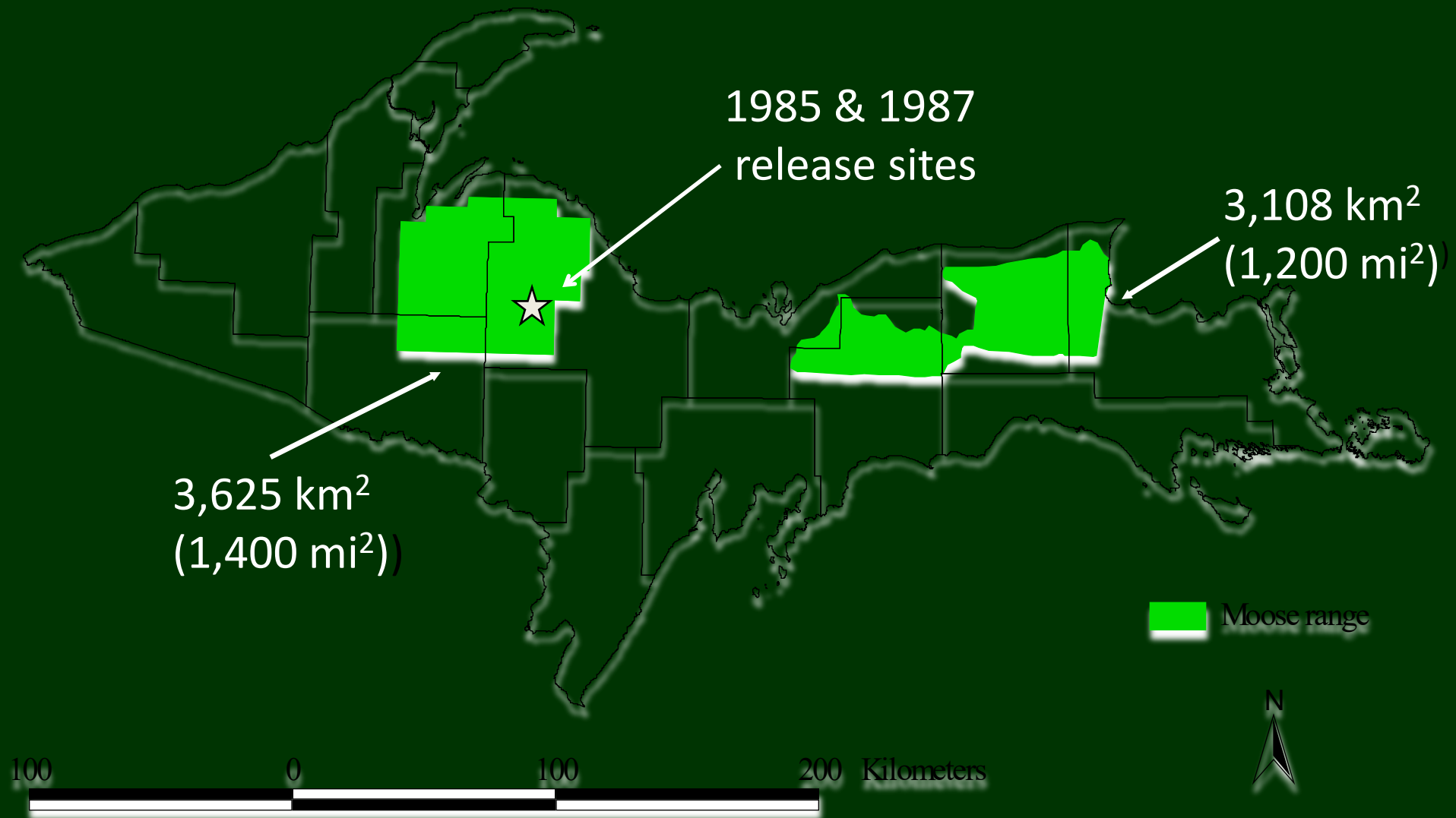
A photograph of two deer in a snowy forest. One deer is standing in the upper left, looking towards the right. The other deer is in the lower center, facing away from the camera. The ground is covered in a thick layer of snow, and there are snow-laden evergreen trees in the background.

Special thanks to **Caleb Eckloff**  
and **Brad Johnson** for their  
coordination of this year's  
survey



# Moose Distribution

## (Outside of Isle Royale)





# Aerial Survey

- Fixed-wing
- Sightability model
  - Group size
  - Canopy cover
- Sex/age classification

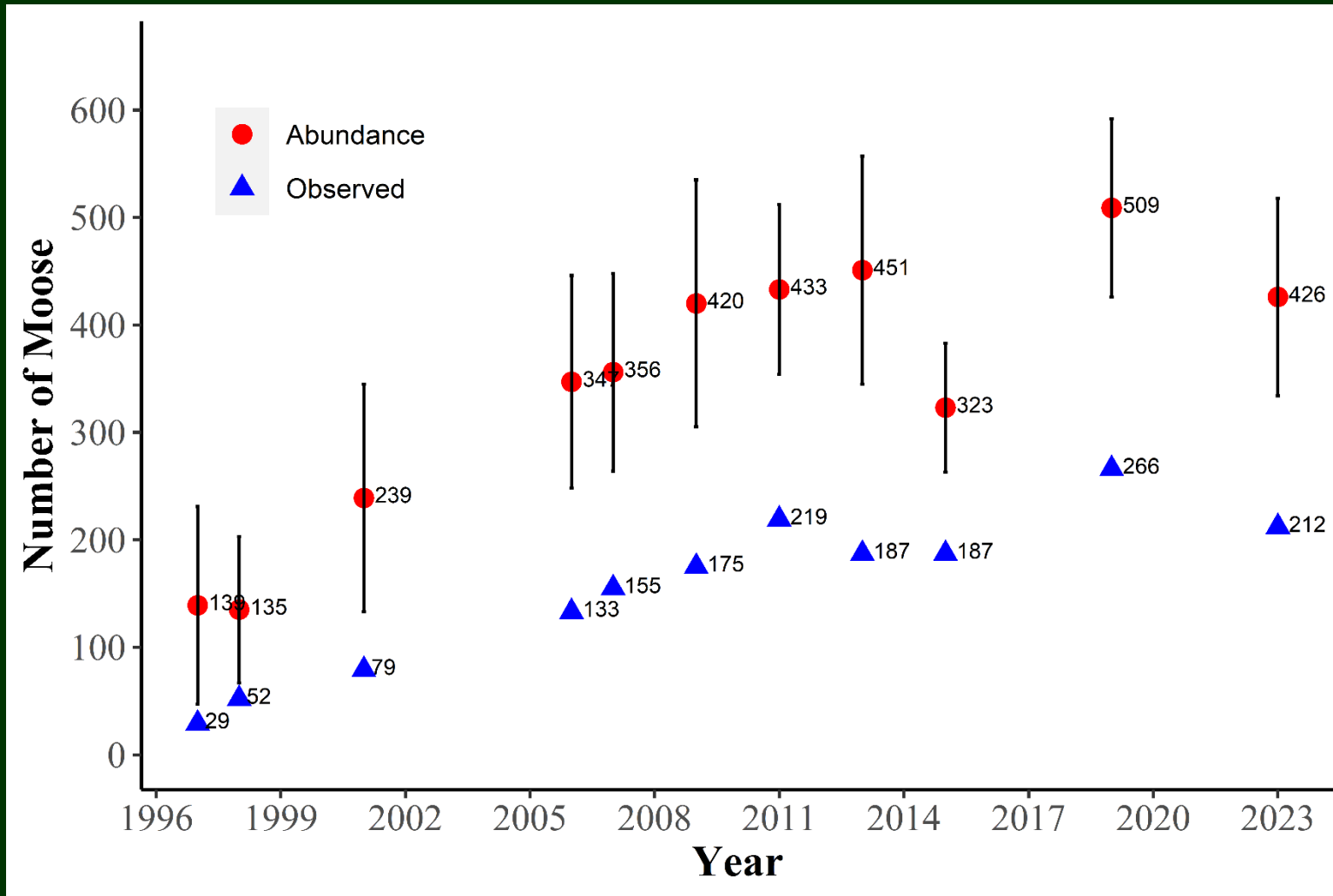




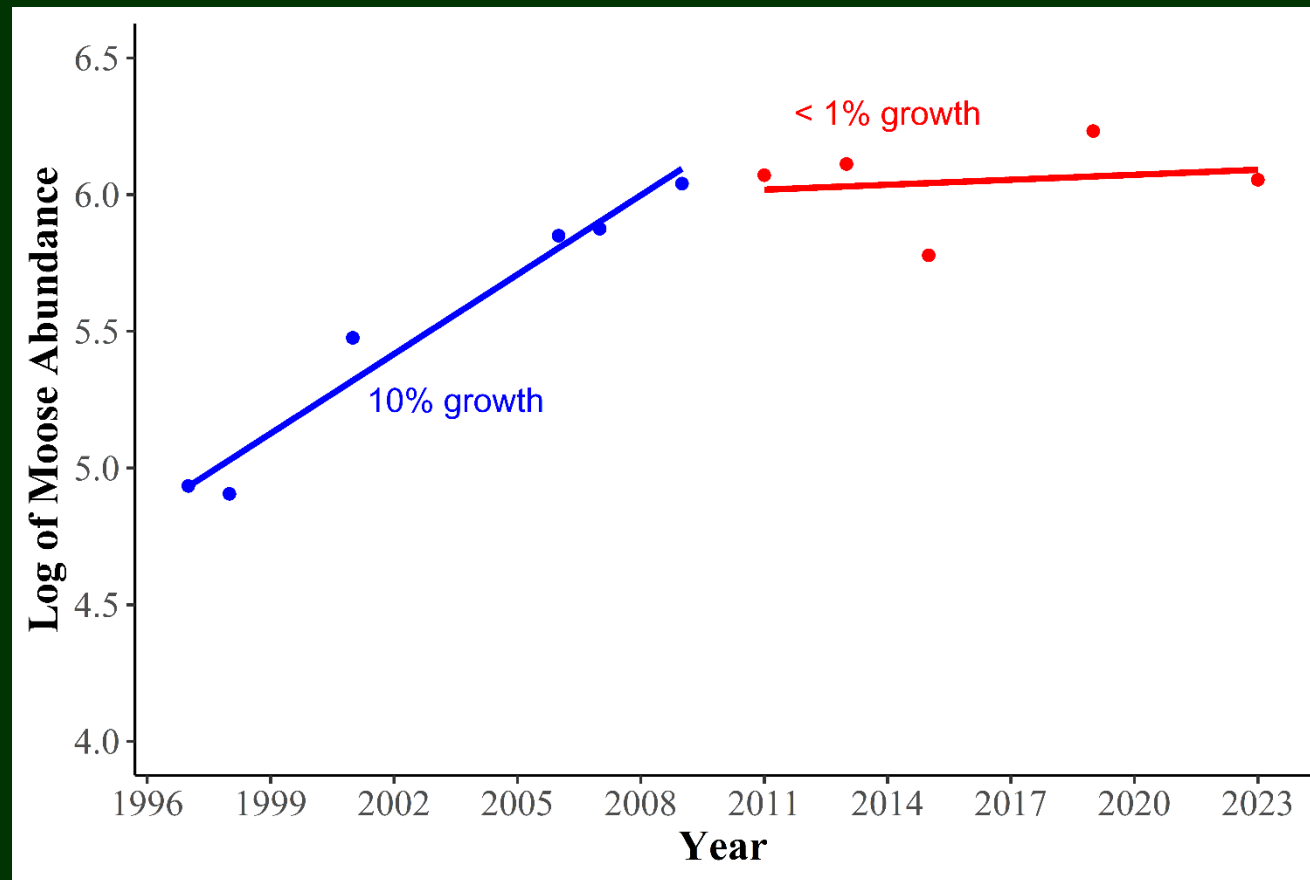




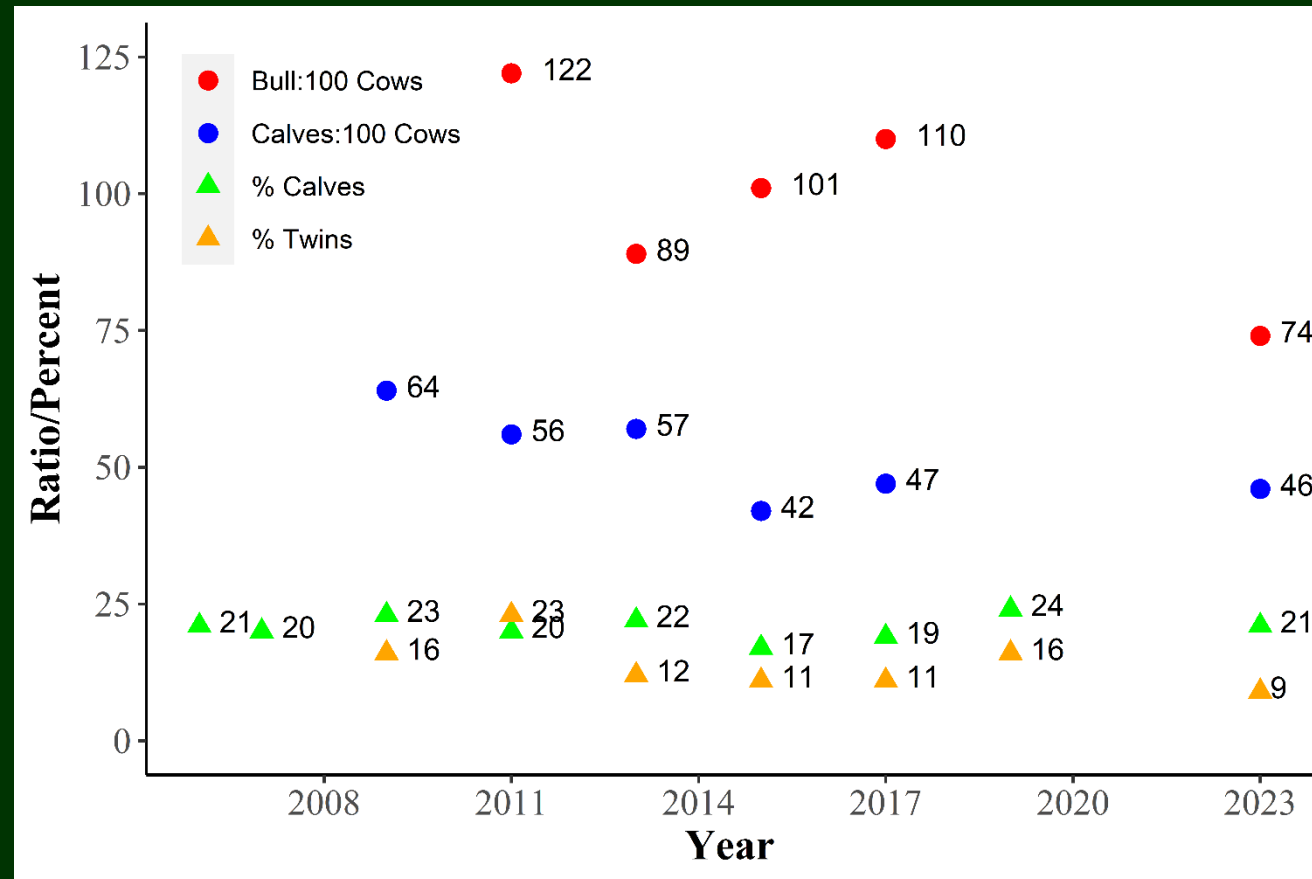
# Core Moose Range Estimates



# Core Range Population Trends



# Core Sex Ratio and Calving Rates







# Order to Regulate Target Shooting at Cornish SGA, Dr. Gordon Guyer -Augusta Creek SWA, and Three Rivers SGA

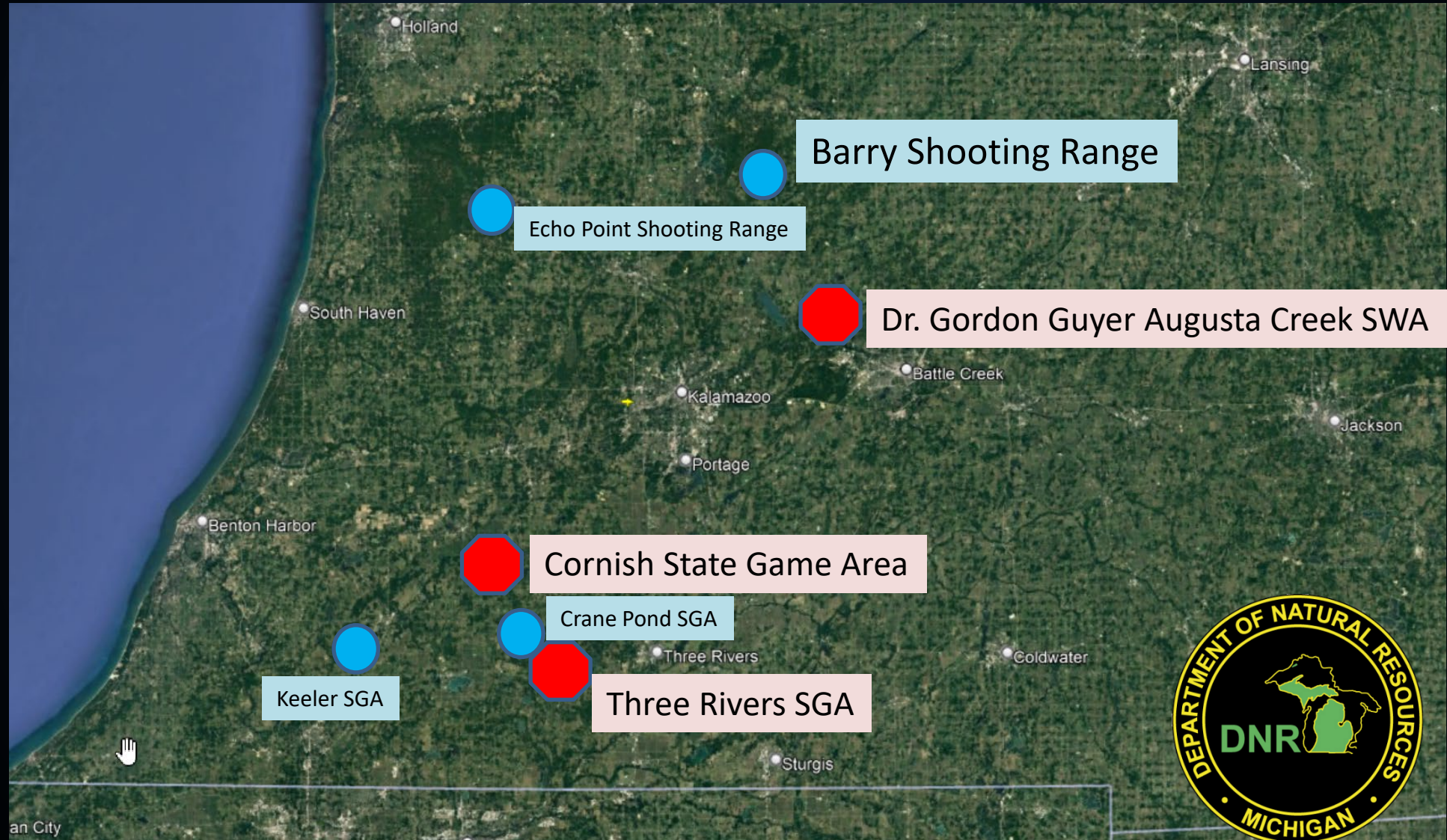


**LUOD Amendment No. 2 of 2023**



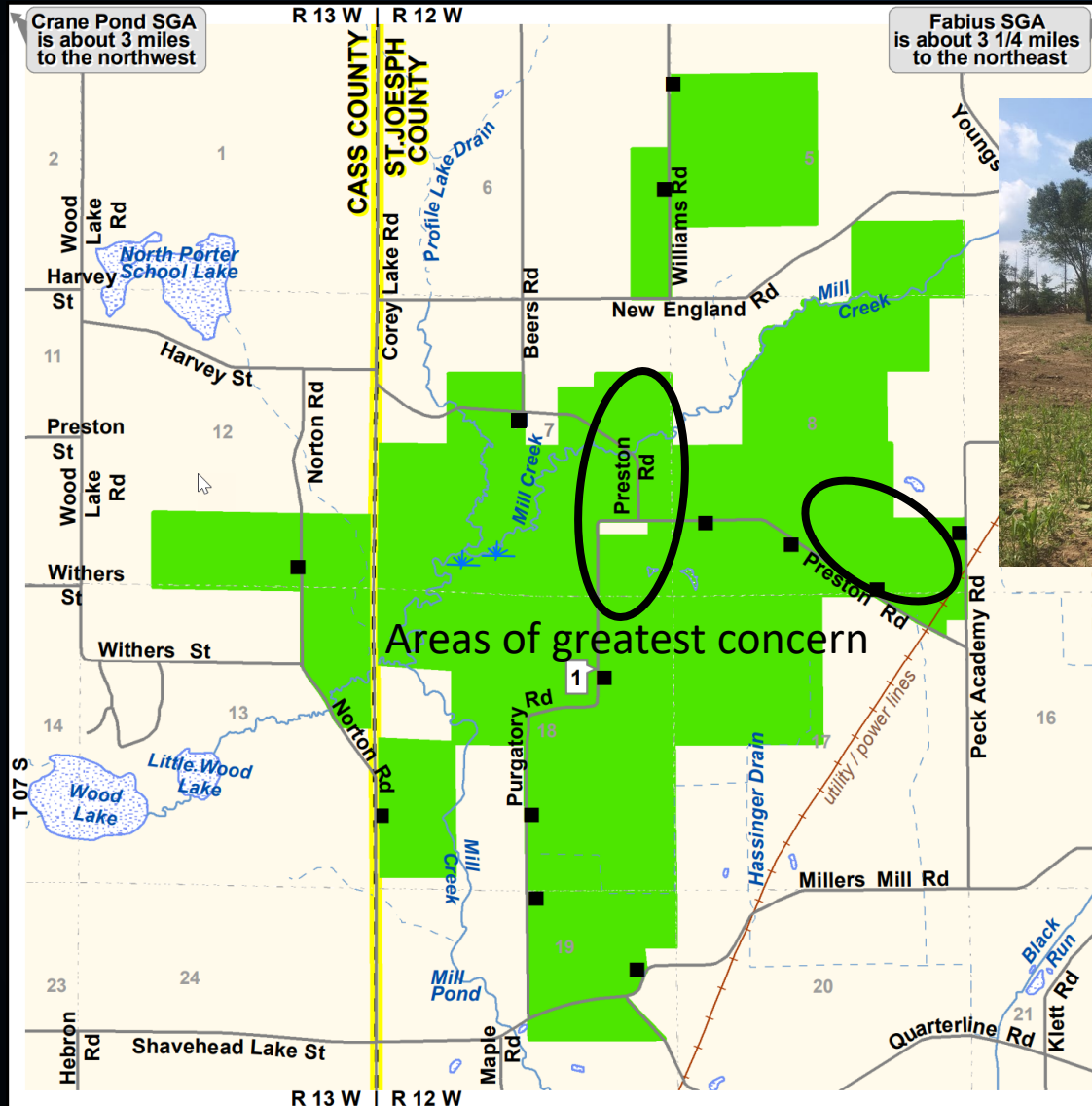


# Overview





# Three Rivers State Game Area - 1

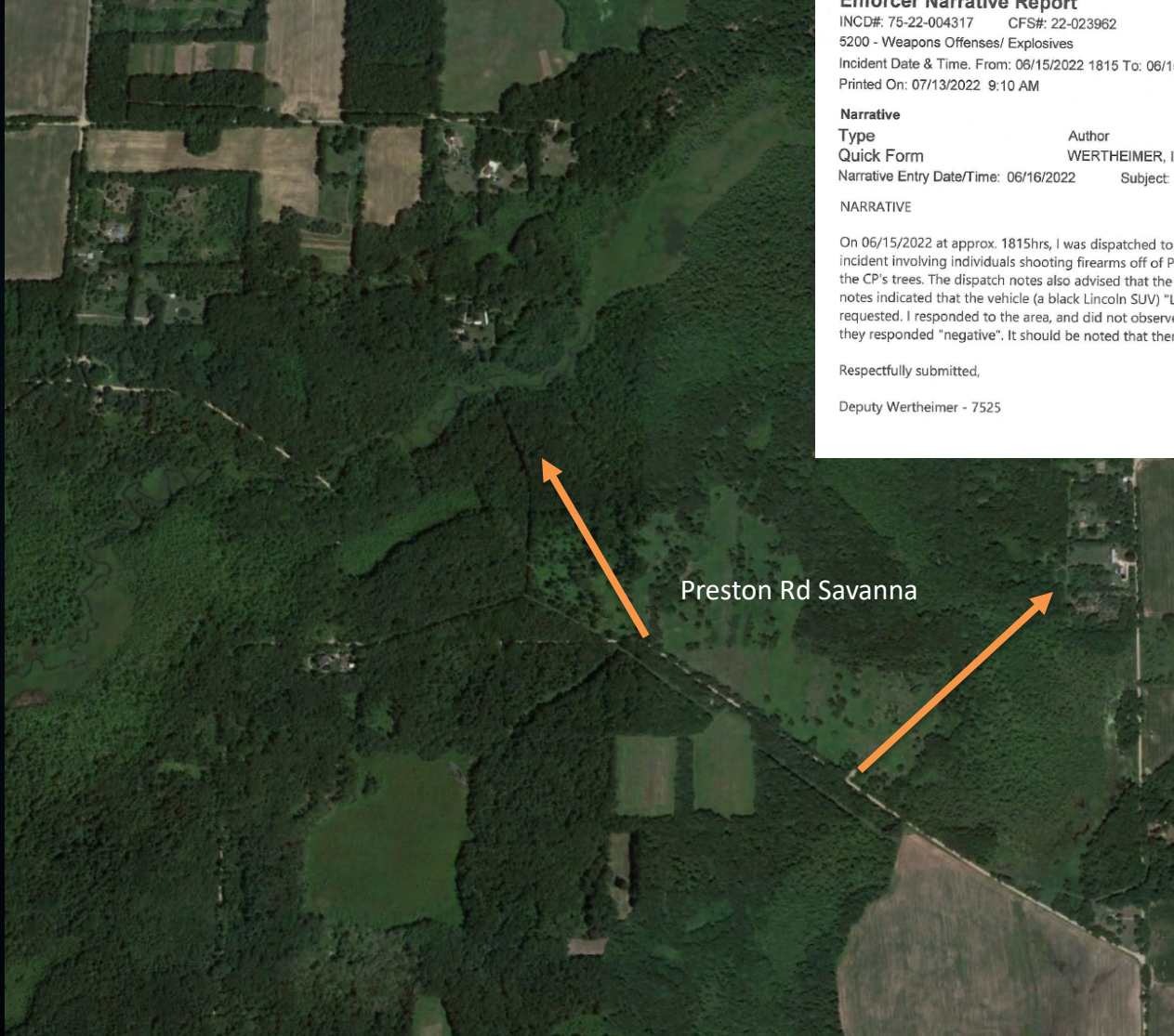


Google Earth





# Three Rivers State Game Area - 2



## ST. JOSEPH SHERIFF

### Enforcer Narrative Report

INCD#: 75-22-004317 CFS#: 22-023962

5200 - Weapons Offenses/ Explosives

Incident Date & Time: From: 06/15/2022 1815 To: 06/15/2022 1815

Printed On: 07/13/2022 9:10 AM



#### Narrative

Type

Author

Approving Officer

Quick Form

WERTHEIMER, ISIAH ELLER

Narrative Entry Date/Time: 06/16/2022

Subject:

#### NARRATIVE

On 06/15/2022 at approx. 1815hrs, I was dispatched to 63636 Peck Academy Rd, in Constantine Twp MI 49042 for an incident involving individuals shooting firearms off of Preston Rd. The dispatch notes indicated that bullets were hitting the CP's trees. The dispatch notes also advised that the CP would attempt to contact these individual(s). The dispatch notes indicated that the vehicle (a black Lincoln SUV) "Left in a hurry". Dispatch advised that an area check was being requested. I responded to the area, and did not observe the vehicle. I asked dispatch if the CP wanted contact, to which they responded "negative". It should be noted that there is game land off of Preston Rd.

Respectfully submitted,

Deputy Wertheimer - 7525



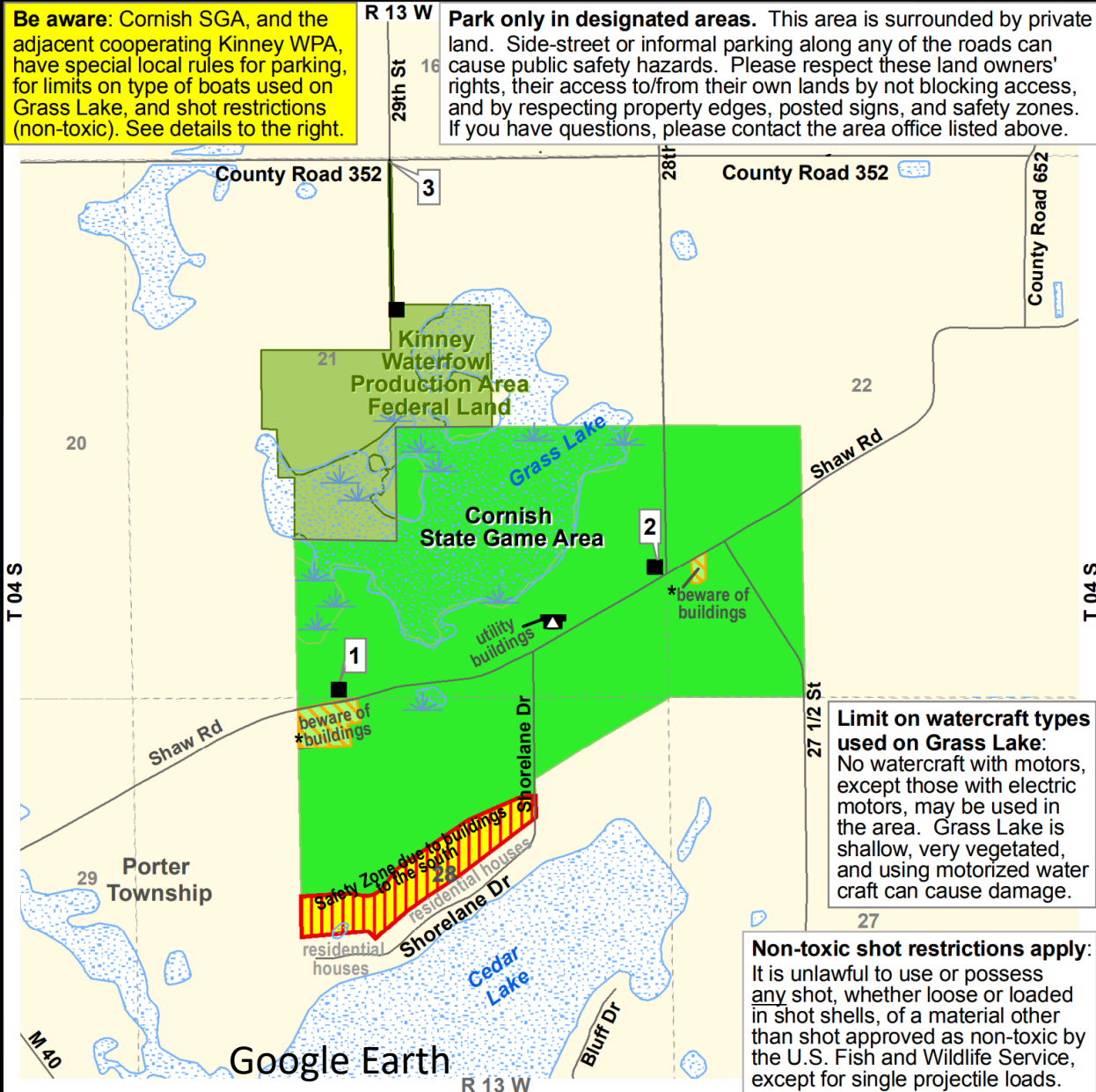


# Three Rivers State Game Area - 3





# Cornish State Game Area - 1

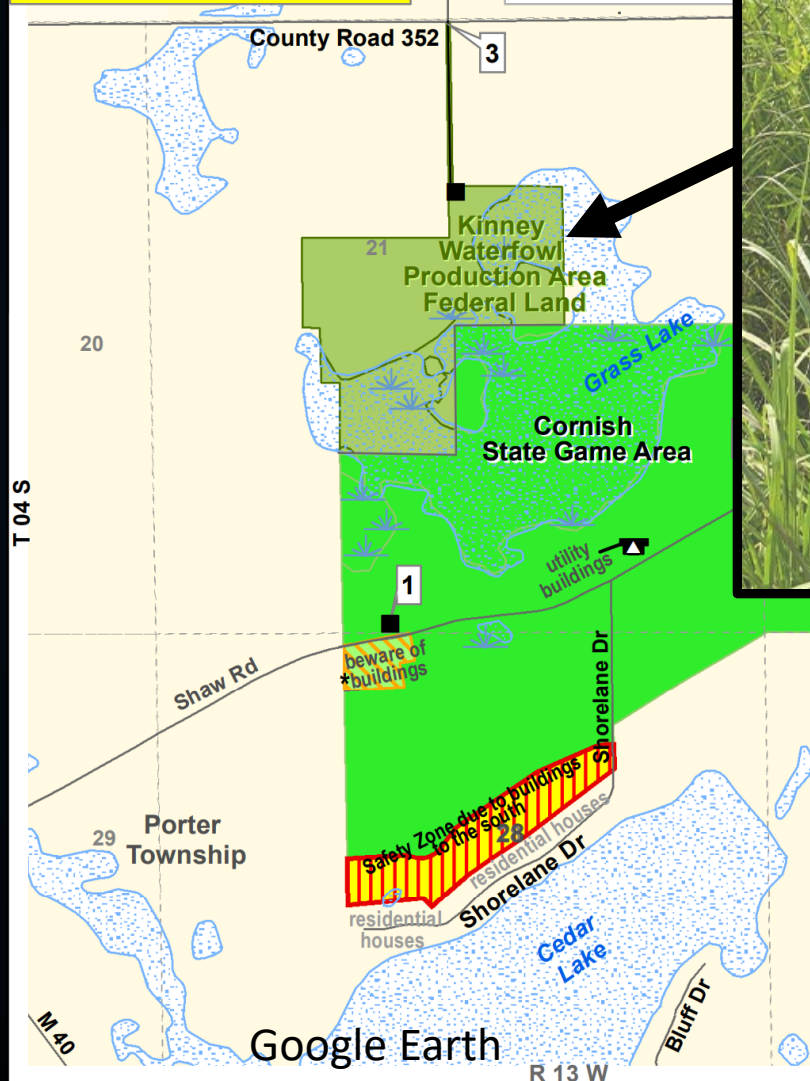


# Cornish State Game Area - 2

**Be aware:** Cornish SGA, and the adjacent cooperating Kinney WPA, have special local rules for parking, for limits on type of boats used on Grass Lake, and shot restrictions (non-toxic). See details to the right.

R 13 W

**Park only in designated areas.** This area is surrounded by private land. Side-street or cause public safety rights, their access to and by respecting private property. If you have questions



## Limit on watercraft types used on Grass Lake:

No watercraft with motors, except those with electric motors, may be used in the area. Grass Lake is shallow, very vegetated, and using motorized watercraft can cause damage.

## Non-toxic shot restrictions apply:

It is unlawful to use or possess any shot, whether loose or loaded in shot shells, of a material other than shot approved as non-toxic by the U.S. Fish and Wildlife Service, except for single projectile loads.





# Cornish State Game Area - 3

**Be aware:** Cornish SGA, and the adjacent cooperating Kinney WPA, have special local rules for parking, for limits on type of boats used on Grass Lake, and shot restrictions (non-toxic). See details to the right.

**Park only in designated areas.** This area is surrounded by private land. Side-street or informal parking along any of the roads can cause parking rights, traffic, and by the way, if you have a car, it's a pain.

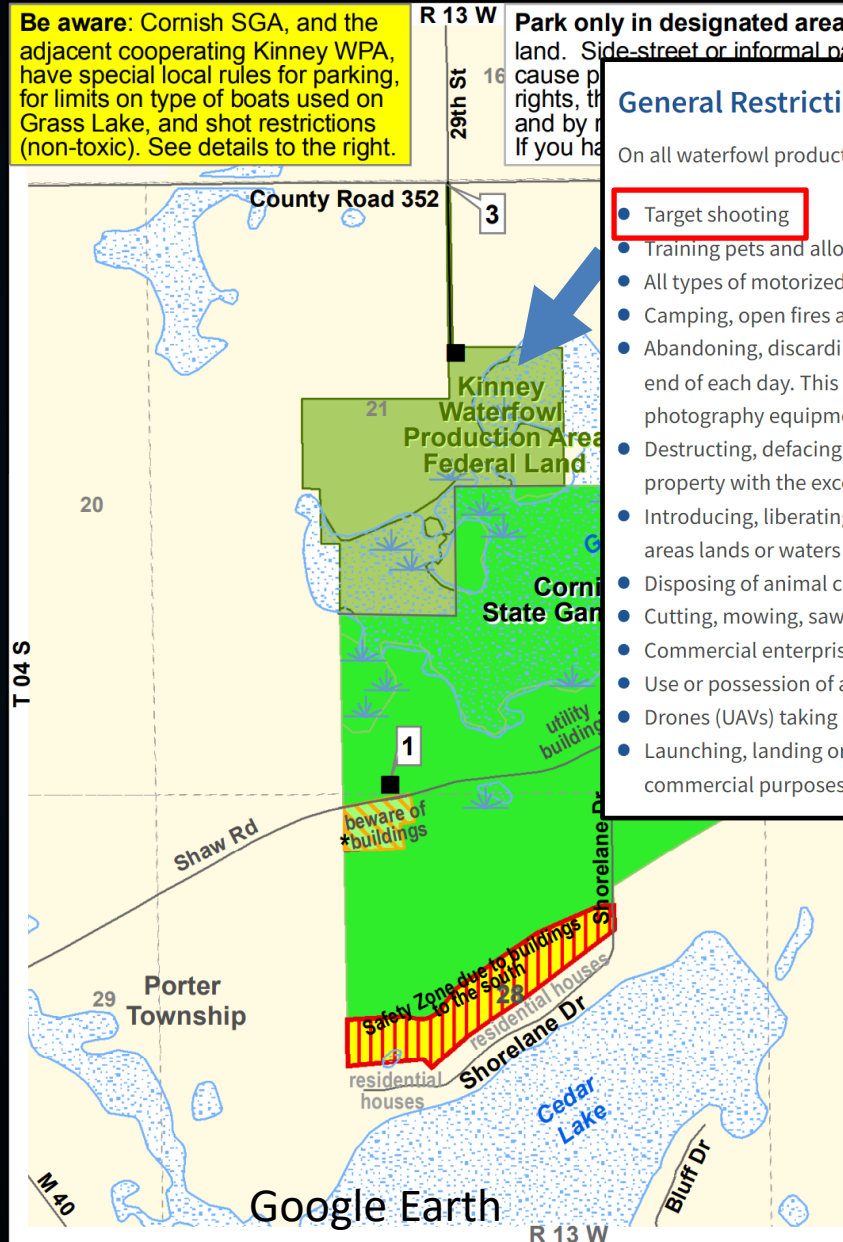
## General Restrictions

On all waterfowl production areas, we prohibit:

- Target shooting
- Training pets and allowing pets off leash
- All types of motorized watercraft (including gasoline and electric)
- Camping, open fires and overnight parking including designated parking areas
- Abandoning, discarding or otherwise leaving any personal property. All property brought onto a refuge must be removed at the end of each day. This includes all common items like vehicles, boats, decoys, trail cameras, blinds, geocaching items, photography equipment, portable stands and climbing equipment.
- Destructing, defacing, disturbing or unauthorized removal of any natural object, artifact, cultural resource or government property with the exception of mushroom and berry picking for personal consumption
- Introducing, liberating or placing plants or animals, or their parts, taken elsewhere and introducing it to waterfowl production areas lands or waters
- Disposing of animal carcasses, trash, refuse, rocks, wood or other debris
- Cutting, mowing, sawing, digging, collecting, injuring or removing vegetation without a permit
- Commercial enterprise without a special use permit
- Use or possession of any illegal drug or drug paraphernalia is prohibited
- Drones (UAVs) taking off, landing and/or flying on or over district lands
- Launching, landing or disturbing of wildlife by aircraft (includes drones) on the district. This includes for recreational or commercial purposes.

**Limit on watercraft types used on Grass Lake:**  
No watercraft with motors, except those with electric motors, may be used in the area. Grass Lake is shallow, very vegetated, and using motorized watercraft can cause damage.

**Non-toxic shot restrictions apply:**  
It is unlawful to use or possess any shot, whether loose or loaded in shot shells, of a material other than shot approved as non-toxic by the U.S. Fish and Wildlife Service, except for single projectile loads.





# Cornish State Game Area - 4



Common Target  
Shooting Trajectories



Parking Lots



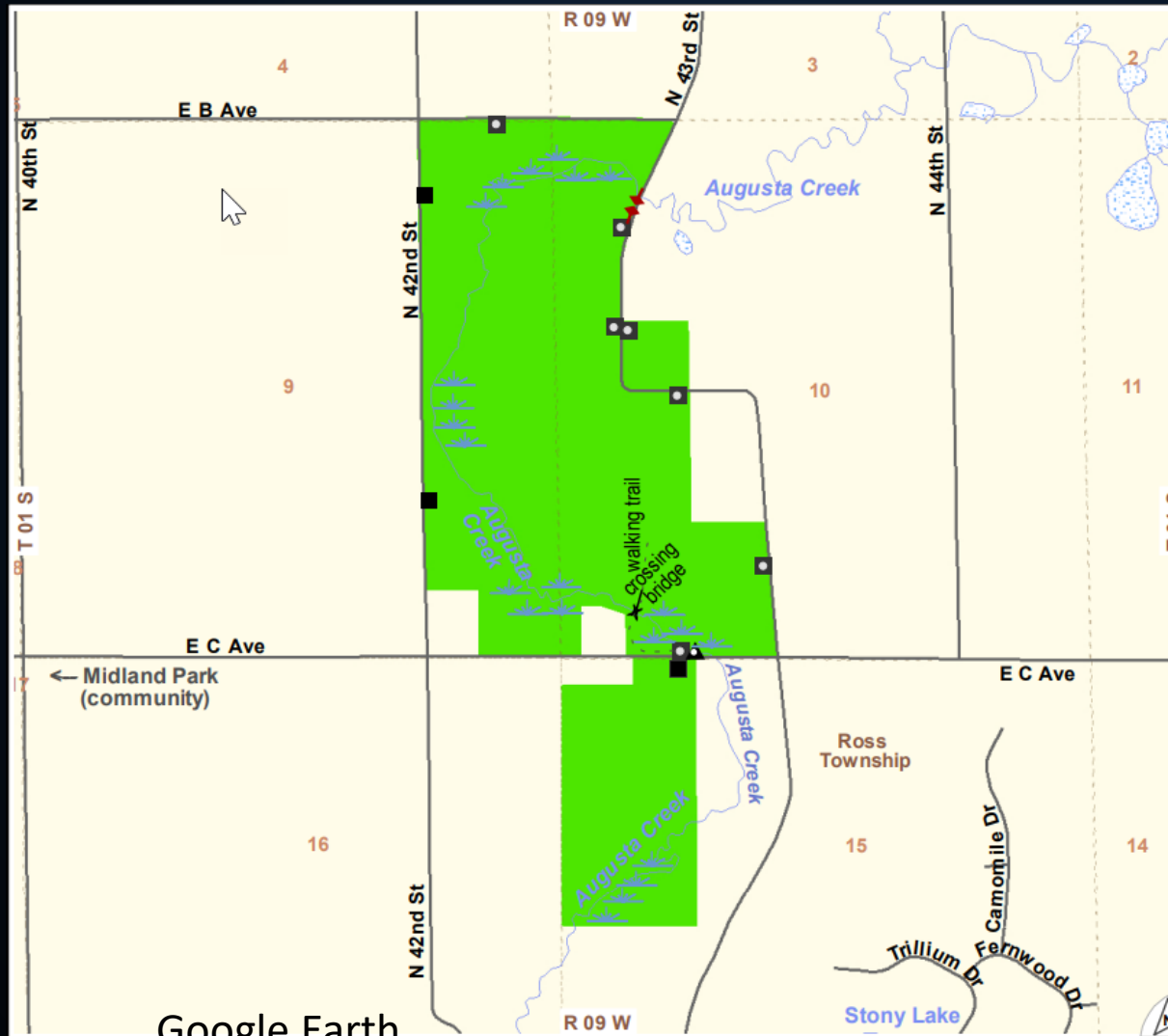


# Cornish State Game Area - 5

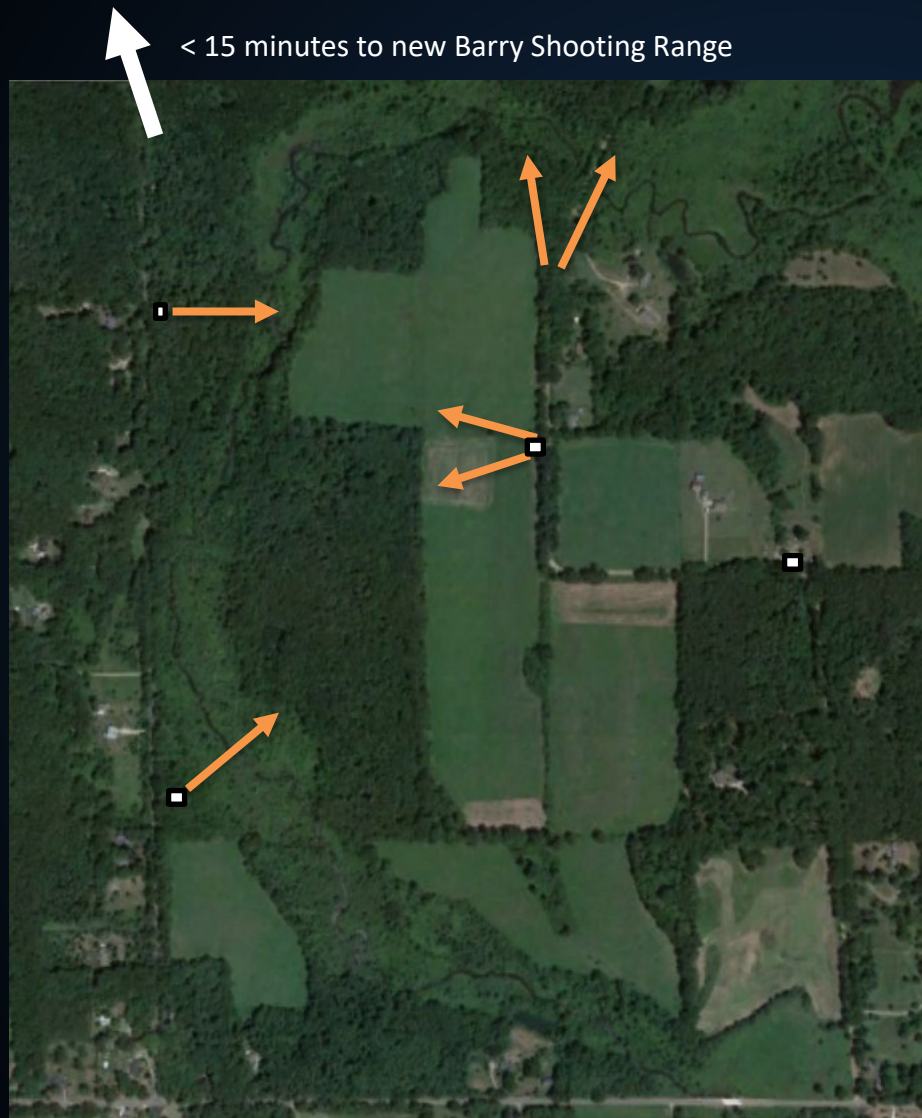




# Dr. Gordon Guyer Augusta Creek SWA - 1



# Dr. Gordon Guyer Augusta Creek SWA - 2



Google Earth

→ Common Target  
Shooting Trajectories

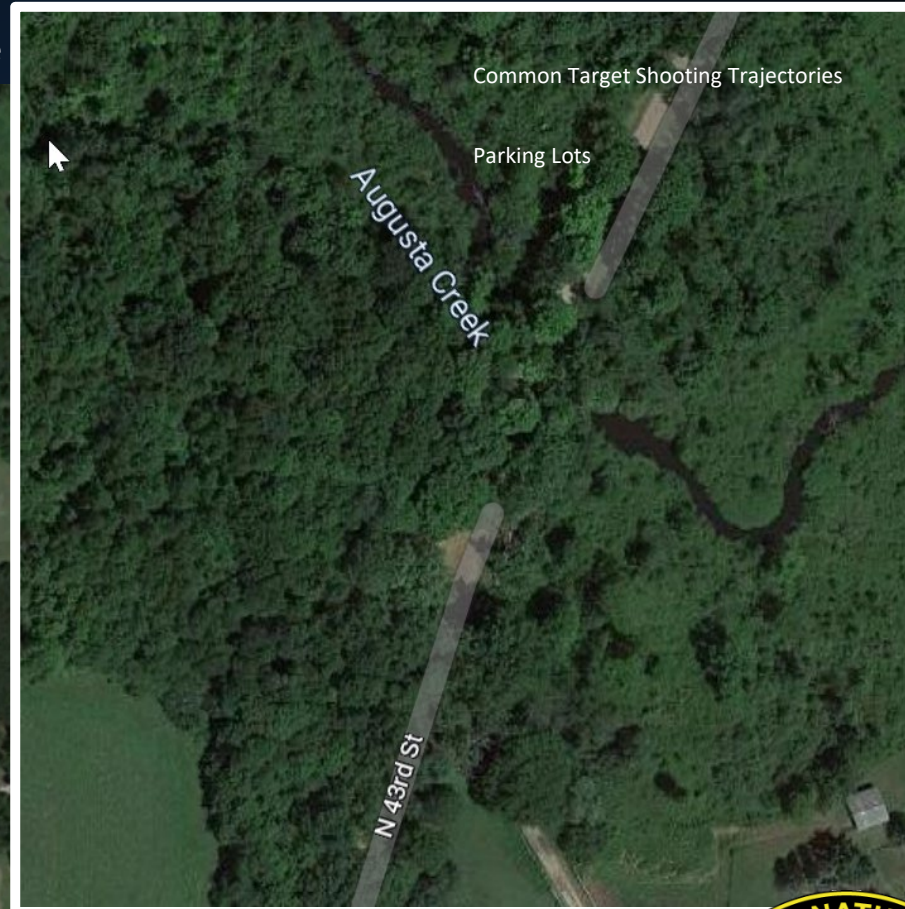
■ Parking Lots





# Dr. Gordon Guyer Augusta Creek SWA - 3

< 15 minutes to new Barry Shooting Range



Google Earth



# Dr. Gordon Guyer Augusta Creek SWA - 4





**Thank You**



Google Earth





# **Parks and Recreation Division Land Use Order of the Director**

---

LUOD No. 3 & 4 of 2023

# LUOD 3 of 2023

---

- LUOD 3 of 2023 is being proposed to address the following 6 items:
  - Replace the names of DNR locations which have been found to be offensive to Tribes. These changes will be made in Chapters 2 and 5. These changes are part of a bigger effort within the US Geological Survey.
  - Prohibit the use of fuel powered generators in PRD managed campgrounds during the established quiet hours.
  - Establish that a camping permit is not valid, and use of a campsite does not commence until both of the following occur: 1) the camp fee is paid and 2) the camp is established pursuant to administrative rule 299.921(a).



# LUOD 3 of 2023

---

- Cont.
  - Allow nighttime access to the Snug Harbor parking lot and day use area within Muskegon State Park and the Bolles Harbor Boating Access Site parking lot to facilitate legal nighttime fishing activities.
  - Allow nighttime access to the Lake Superior parking lot and day use area located within Muskallonge Lake State Park, to facilitate Yooperlite rock collecting.
  - Due to a legislative update, correct the subparagraph, from (g) to (h) referenced in LUOD 5.19, and removal of certain state forest campgrounds to reflect those that are not in Department operation.





# LUOD 4 of 2023

---

- LUOD 4 of 2023 is being proposed to clarify that the alcohol prohibition on Belle Isle park applies to possession and consumption of alcohol which is consistent with the language of other alcohol bans on facilities.
- Currently the language indicates that containers must be open to be enforceable, which makes it extremely difficult to enforce.



---

# Questions

# Thank you!

