

Preliminary 2024 Firearm Deer Season Results



Chad Fedewa - Deer, Elk, and Moose Specialist –
Acting

Samantha Courtney – Deer Biologist

December 12, 2024



Disclaimers

- Data presented as “Reported Harvest”
 - Not meant to reflect “Actual Harvest”
 - Reporting rates are unknown, but will be estimated
 - Reporting rates between years may be different
- Data pulled as of 12/4/24*
 - Subject to change as reports continue
 - *Some data are on different timelines
 - Shouldn't affect overall analysis, but will explain some discrepancies



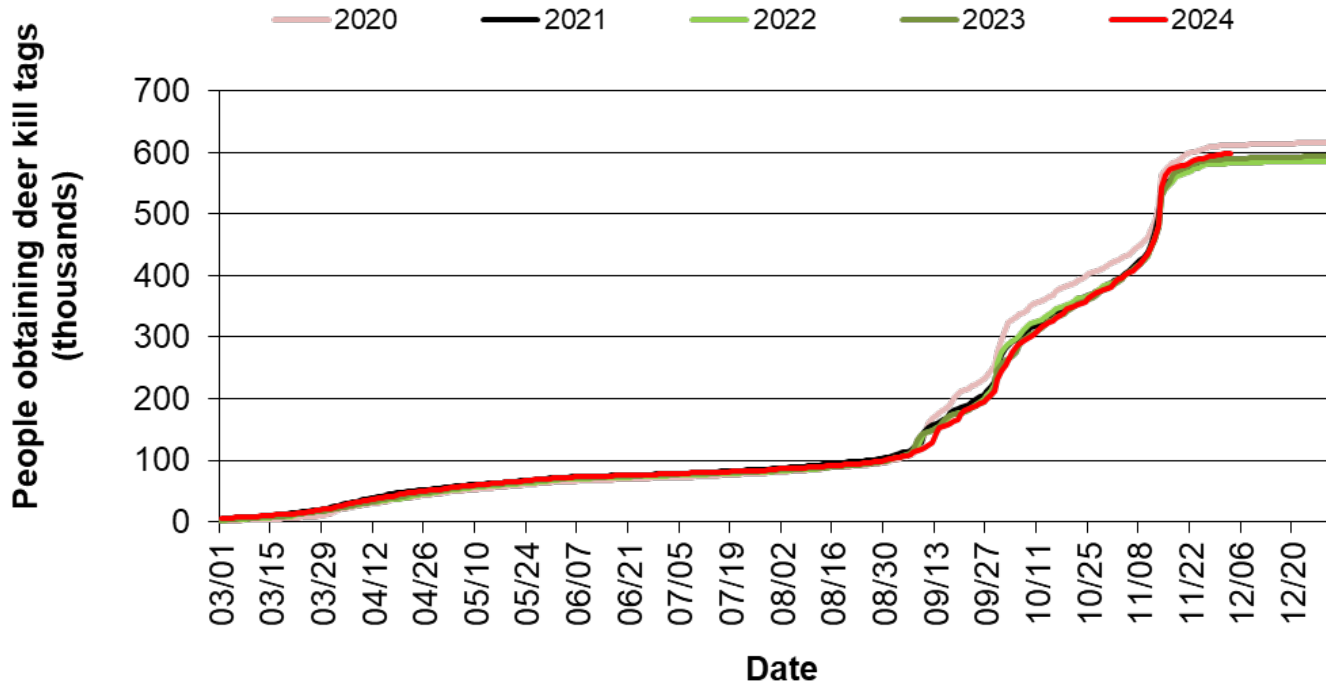
Disclaimers

- Compliance rate
 - Very few states have tried to measure compliance
 - Compare harvest and hunter numbers between similar Midwest states (MO and WI)
 - Supported by observations from past 2 years
 - Non-compliance is likely similar to other states with comparable hunter numbers



License Sales

Cumulative number of people obtaining a deer kill tag in Michigan, summarized by year and date (597,715 people; 1.4% increase from 2023 thru 12-03-2024)



License Sales

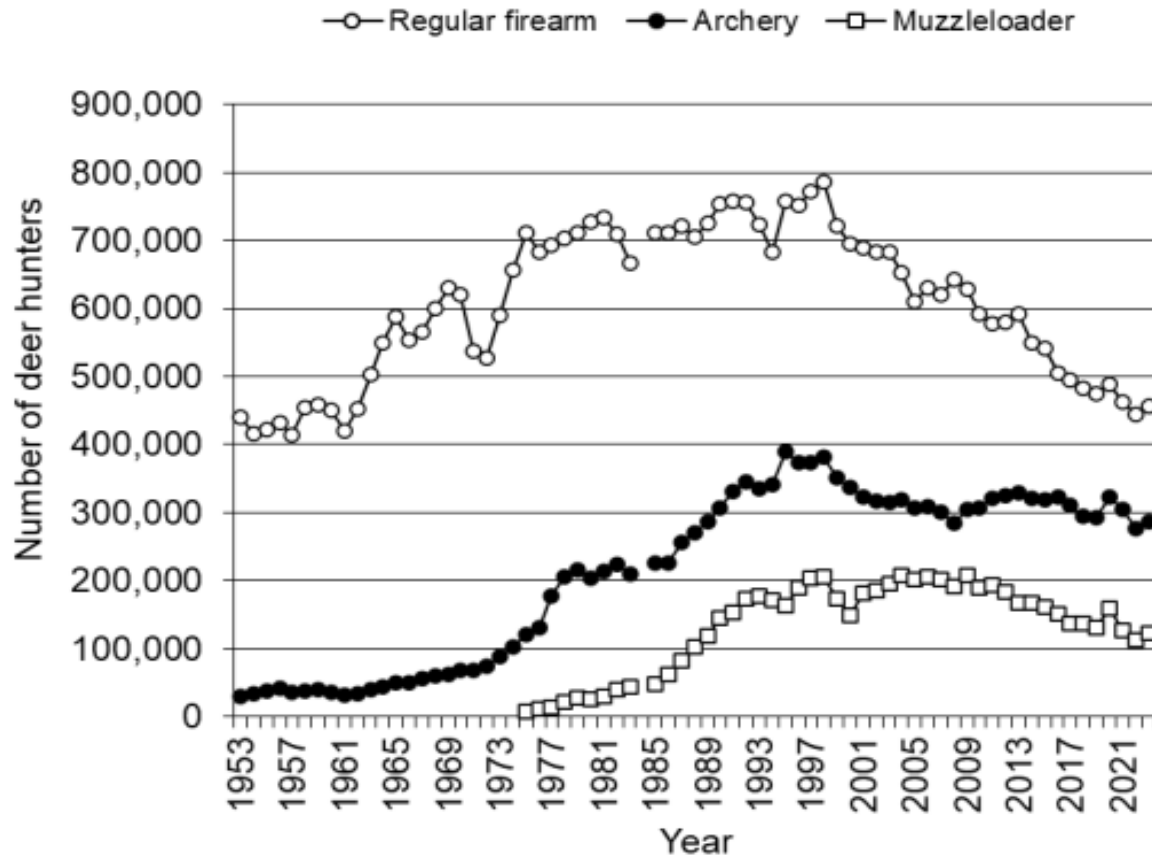
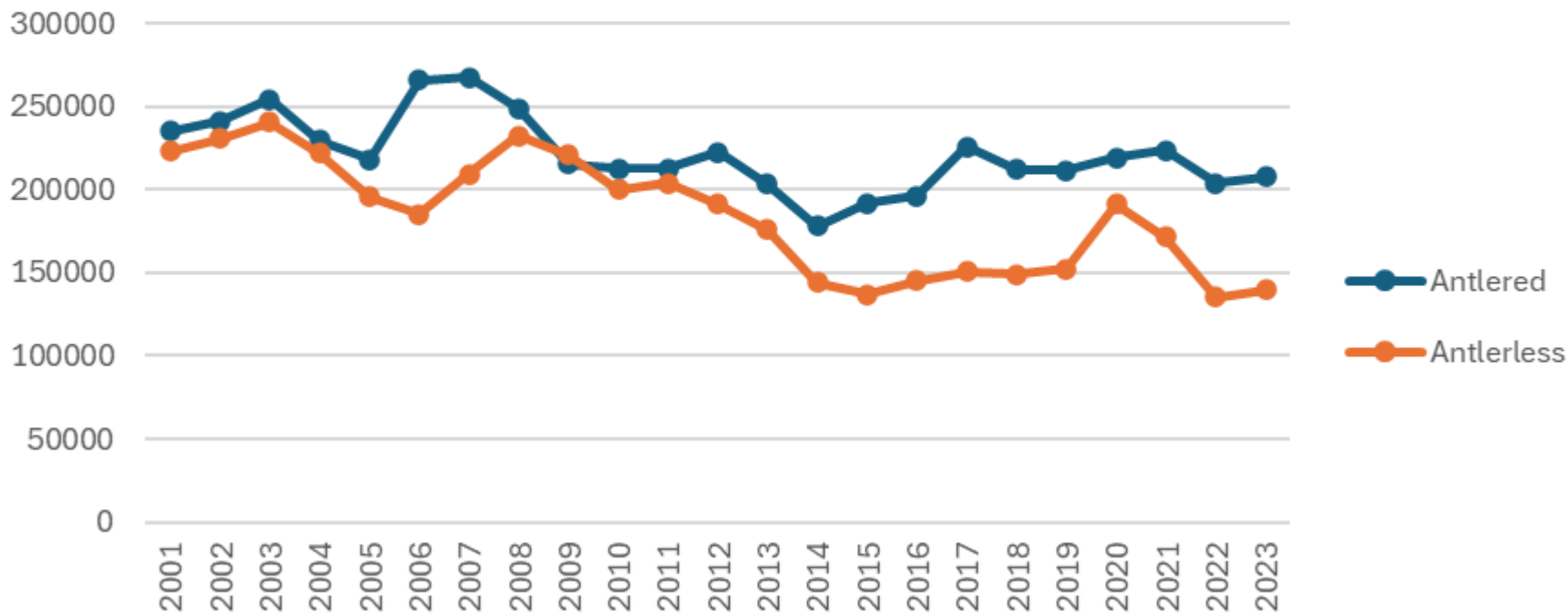


Figure 11. The number of people hunting deer in Michigan during the regular firearm, archery, and muzzleloader seasons, 1953-2023.



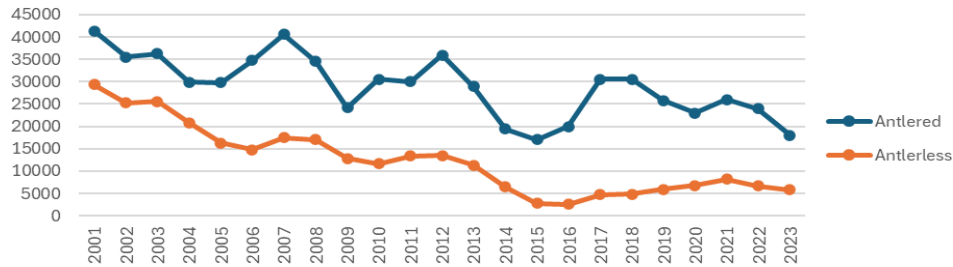
Harvest Trends

Statewide Antlered vs. Antlerless Harvest Estimates

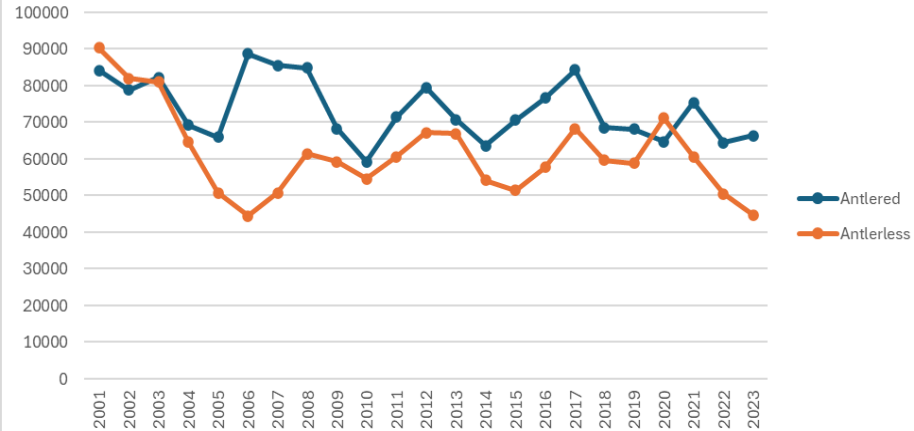


Harvest Trends

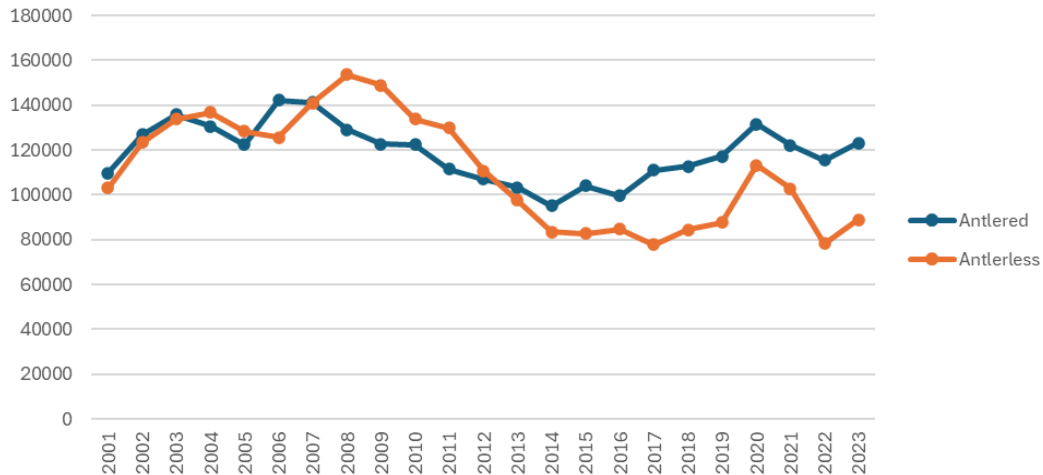
UP Antlered vs. Antlerless Harvest Estimates



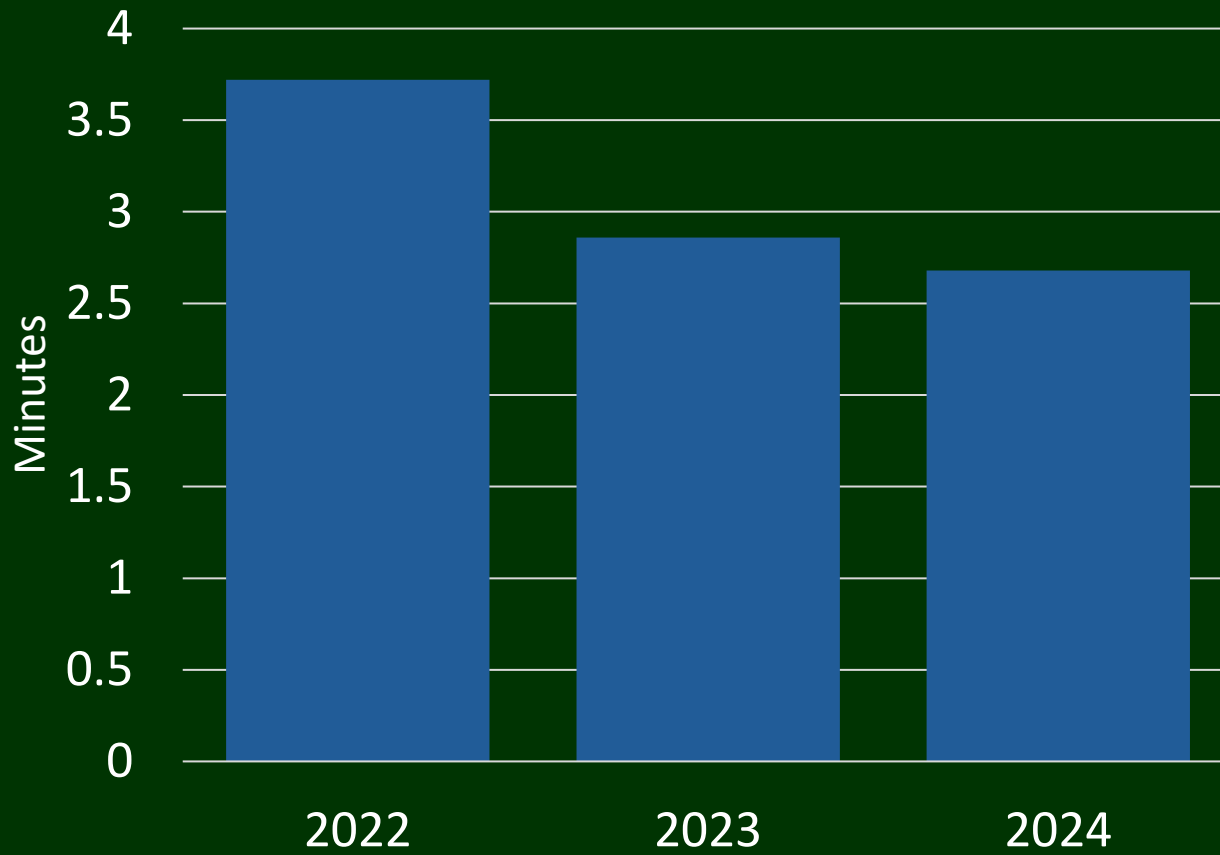
NLP Antlered vs. Antlerless Harvest Estimates



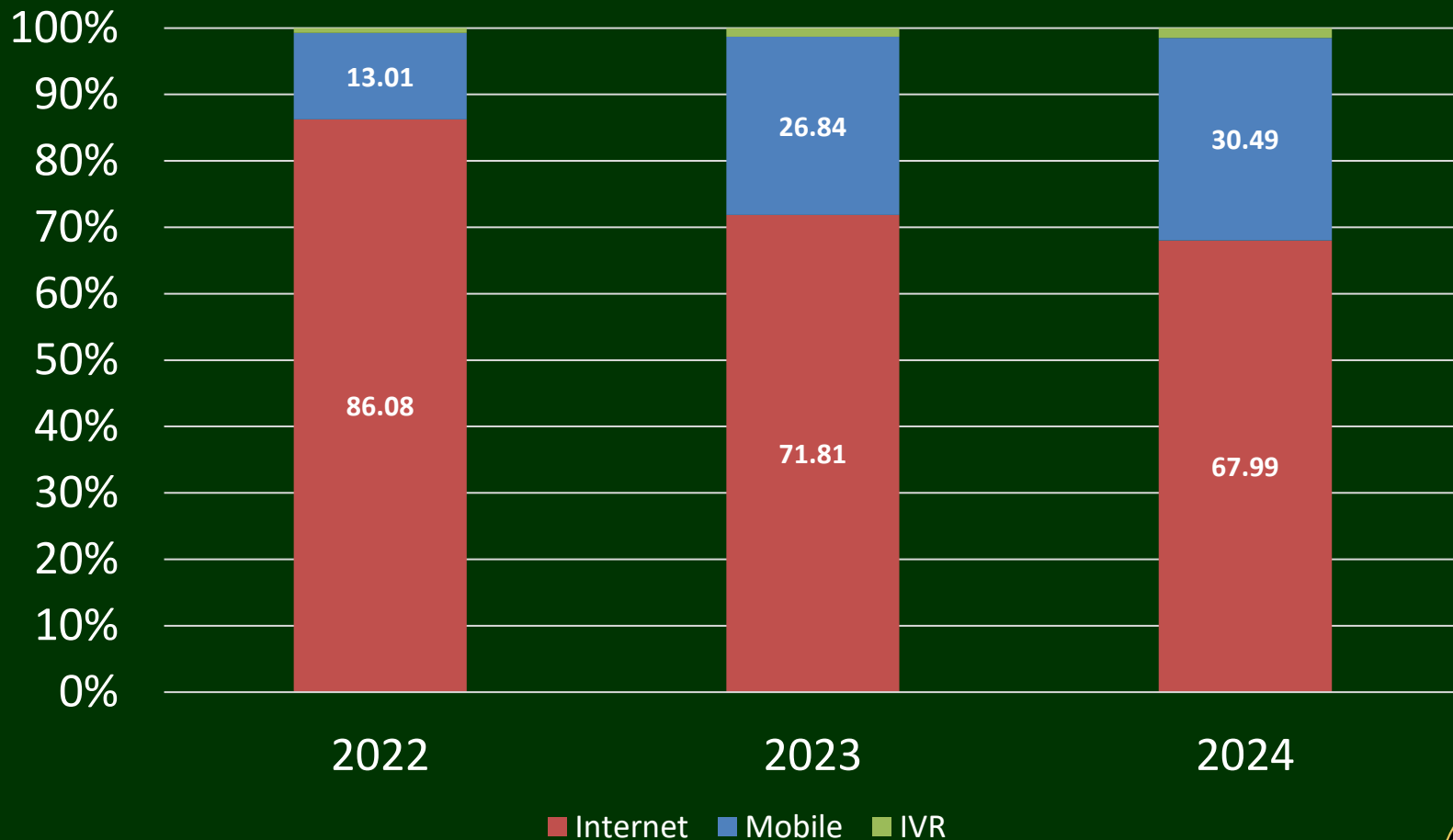
SLP Antlered vs. Antlerless Harvest Estimates



Harvest Reporting Statistic Trends



Harvest Reporting Statistic Trends



Opening Day Harvest

- 41,960 deer reported harvested on opening day
 - 32,980 antlered deer
 - 8,980 antlerless deer
 - 4.0% increase from 2023

Comparisons to 2023*:

UP: +14.1%

NLP: +5.2%

SLP: +2.3%

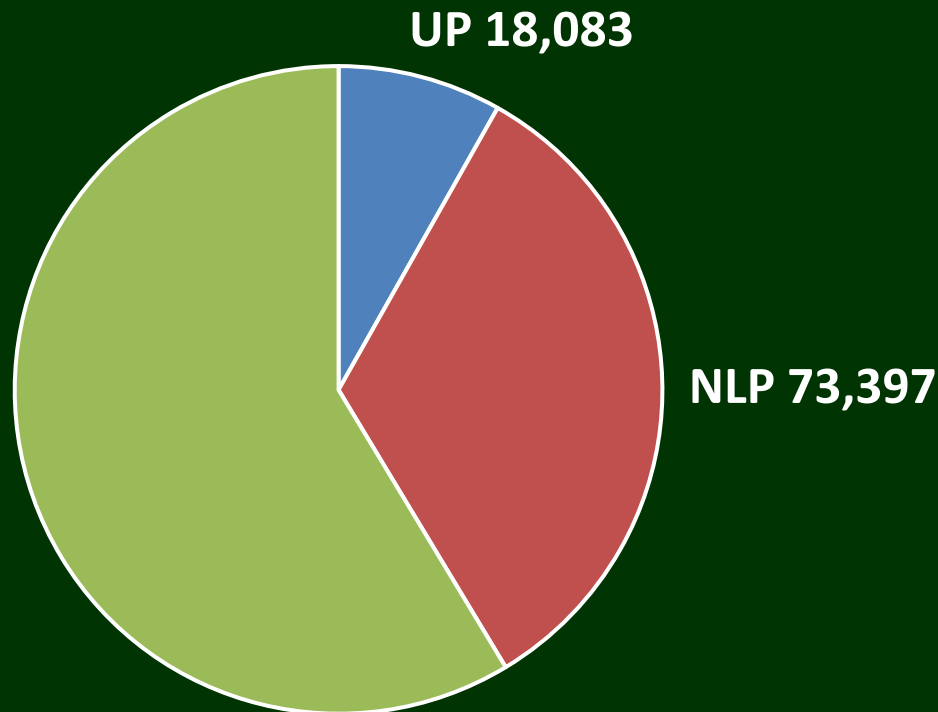
1 deer harvested every 0.92 seconds of daylight



2024 Reported Harvest*

- Reported Harvest:
– 221,138

	2022 Reported Harvest Distribution	2023 Reported Harvest Distribution	2024 Reported Harvest Distribution
UP	8.1 %	6.7%	8.1%
NLP	33.8%	32.0%	33.1%
SLP	58.0%	61.2%	58.6%

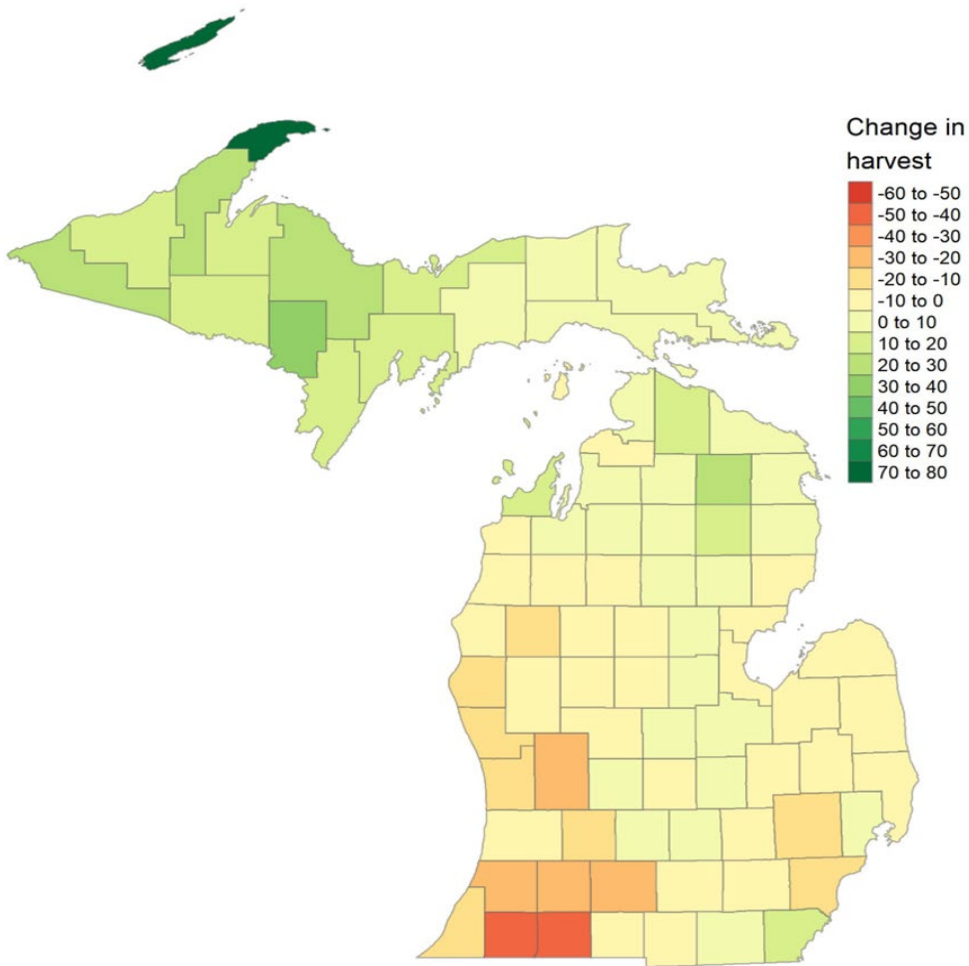


Data through 12/4/24



Change in Harvest, 2024

Change in deer harvest between
2023 and 2024 seasons (12.03.2024)



Comparisons to
2023*:

UP: +16.3%

NLP: +0.78%

SLP: -6.58%

MI: -2.65%

*Data through 11/30/24



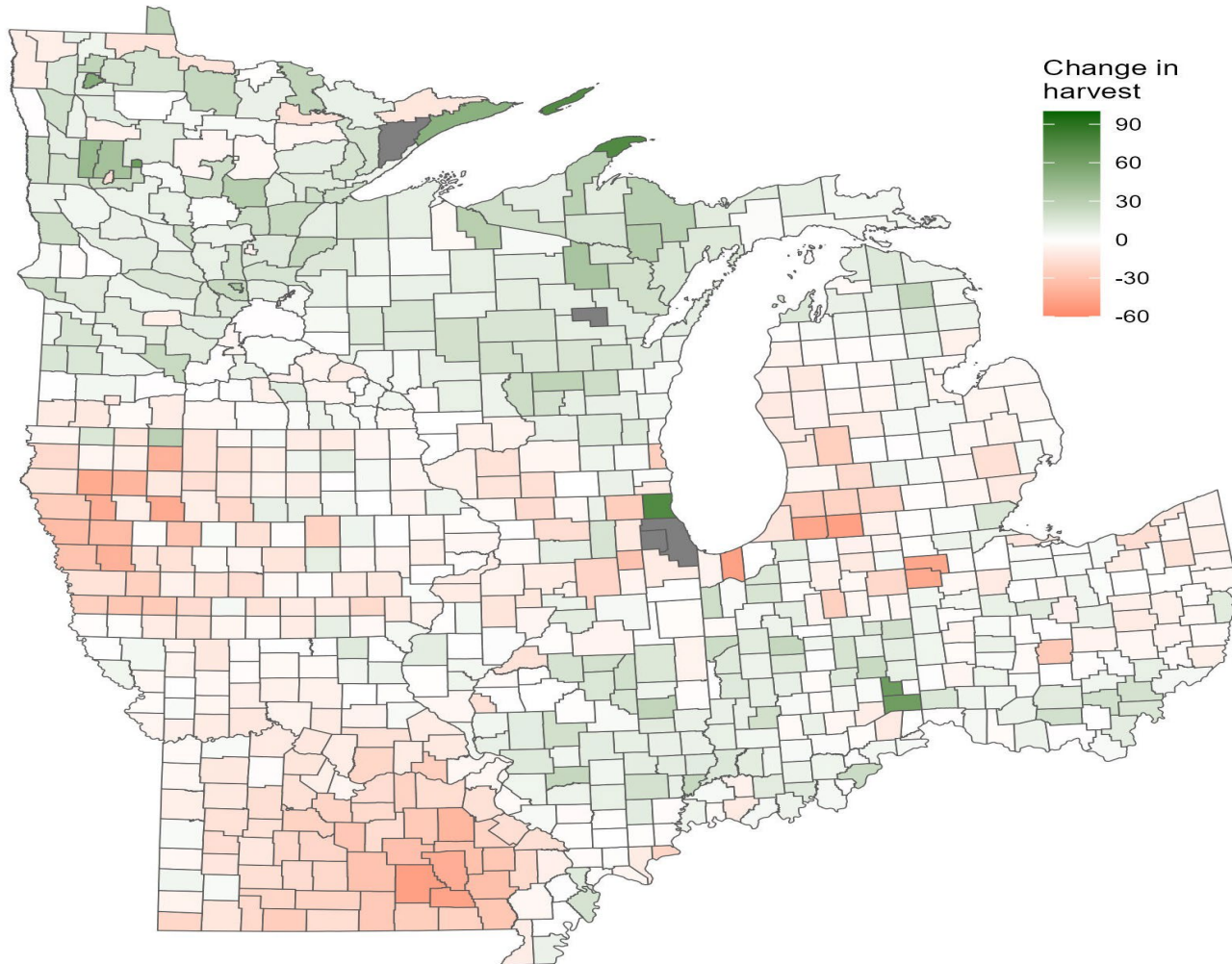
Harvest Changes Across the Midwest

Year	IL*	IN	IA	MI	MN	MO	OH	WI
2023	53,348	108,824	29,344	227,220	145,814	284,739	92,824	266,125
2024	54,661	112,552	27,351	220,571	156,508	242,690	91,875	289,359
% Change 23-24	+2.5%	+3.4%	-6.8%	-2.9%	+7.3%	-14.8%	-1.0%	+8.7%
	*Opening weekend only							

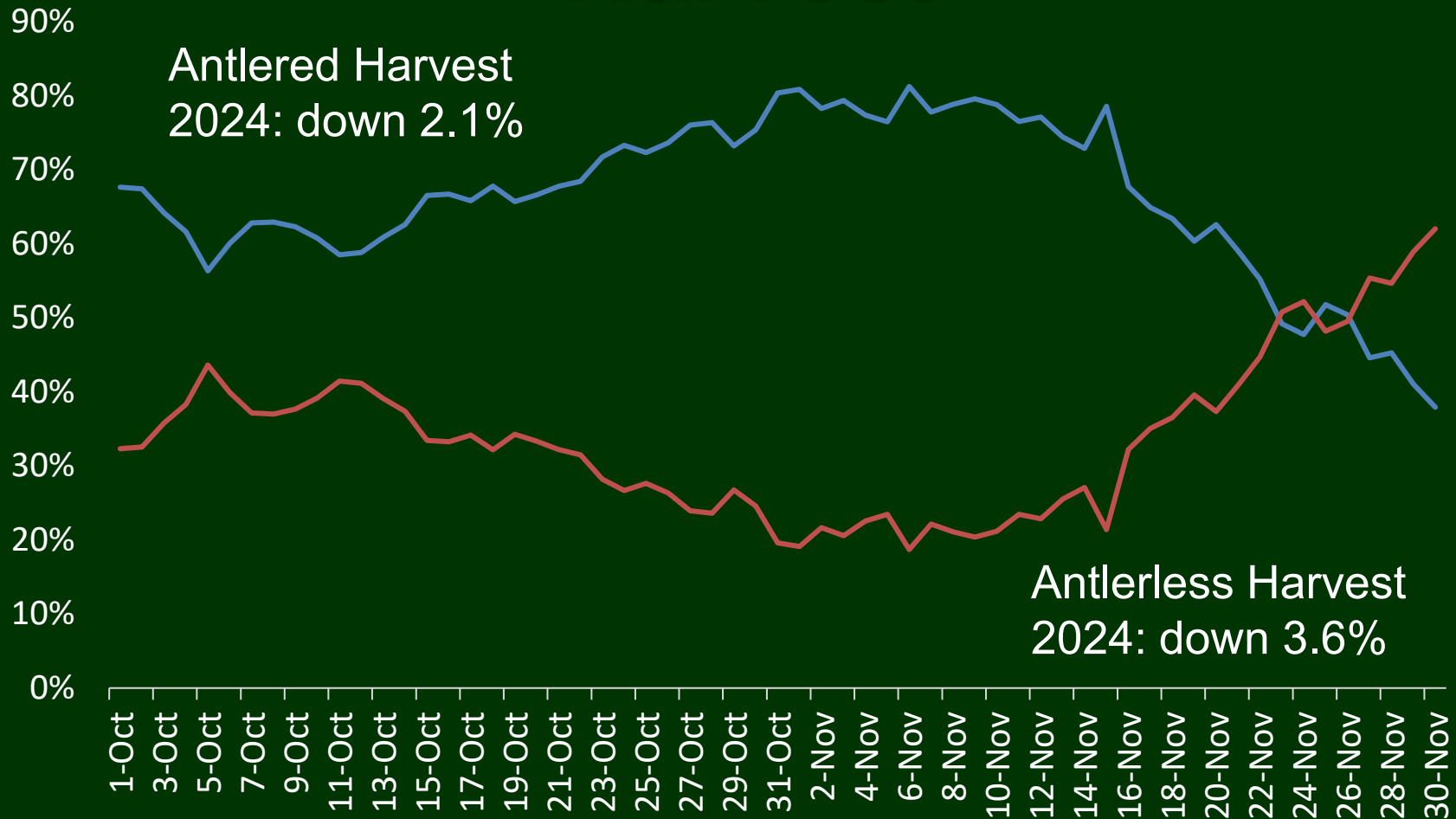


Harvest Change Across the Midwest

Change in deer harvest between 2023 and 2024 (12.03.2024)



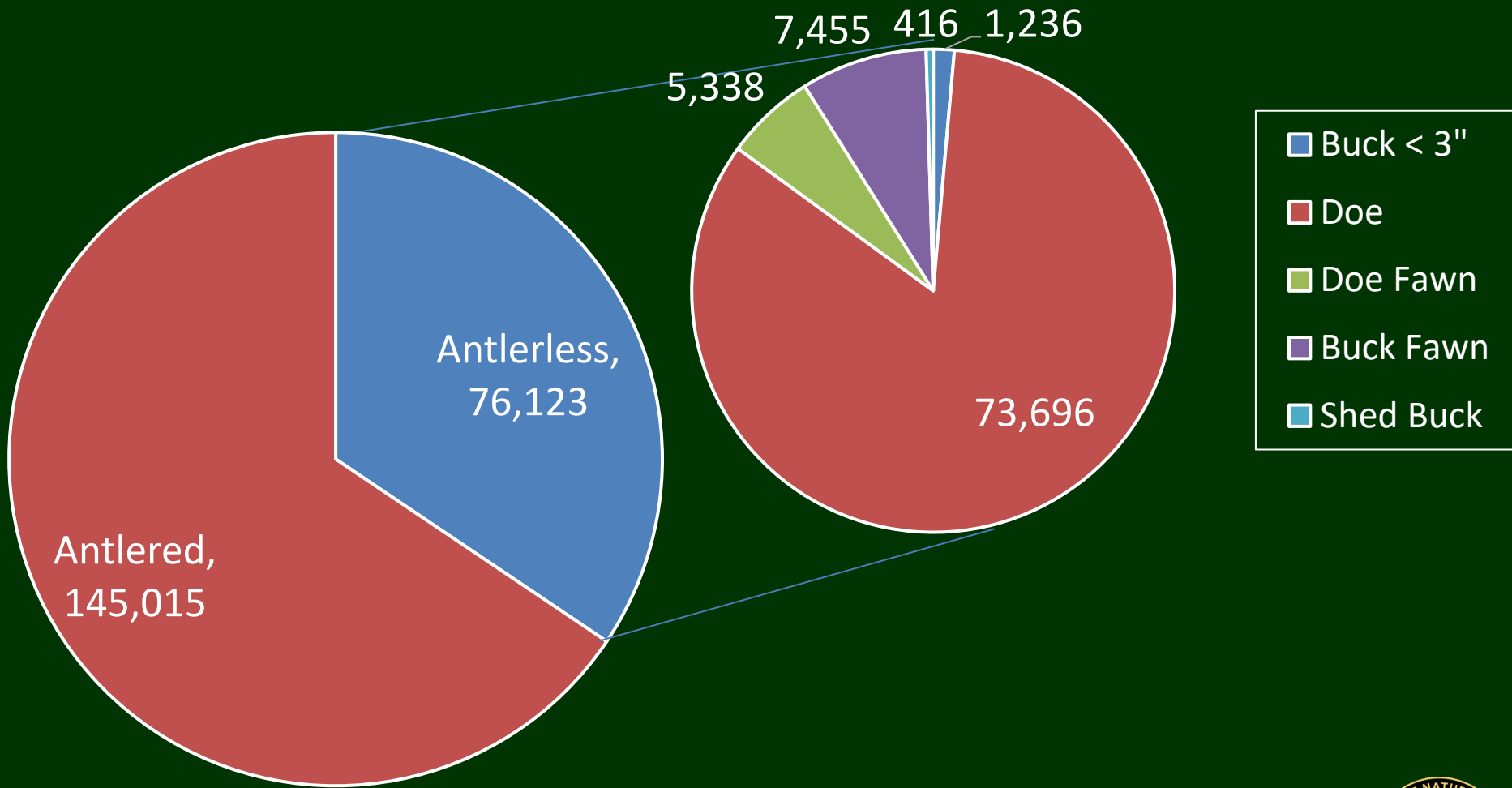
Daily Antler/Antlerless Harvest



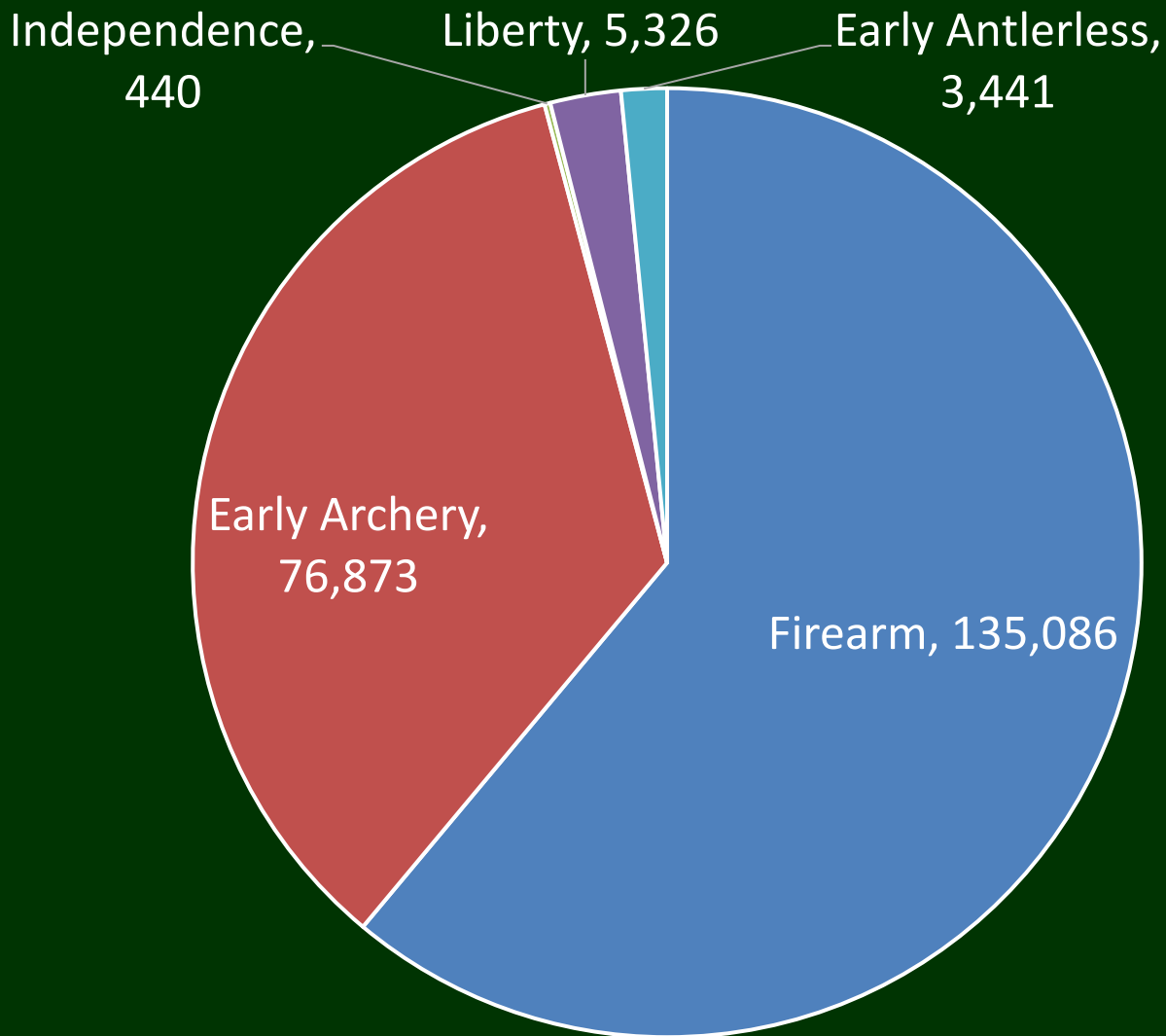
Data through 12/4/24



Antlered/Antlerless Harvest



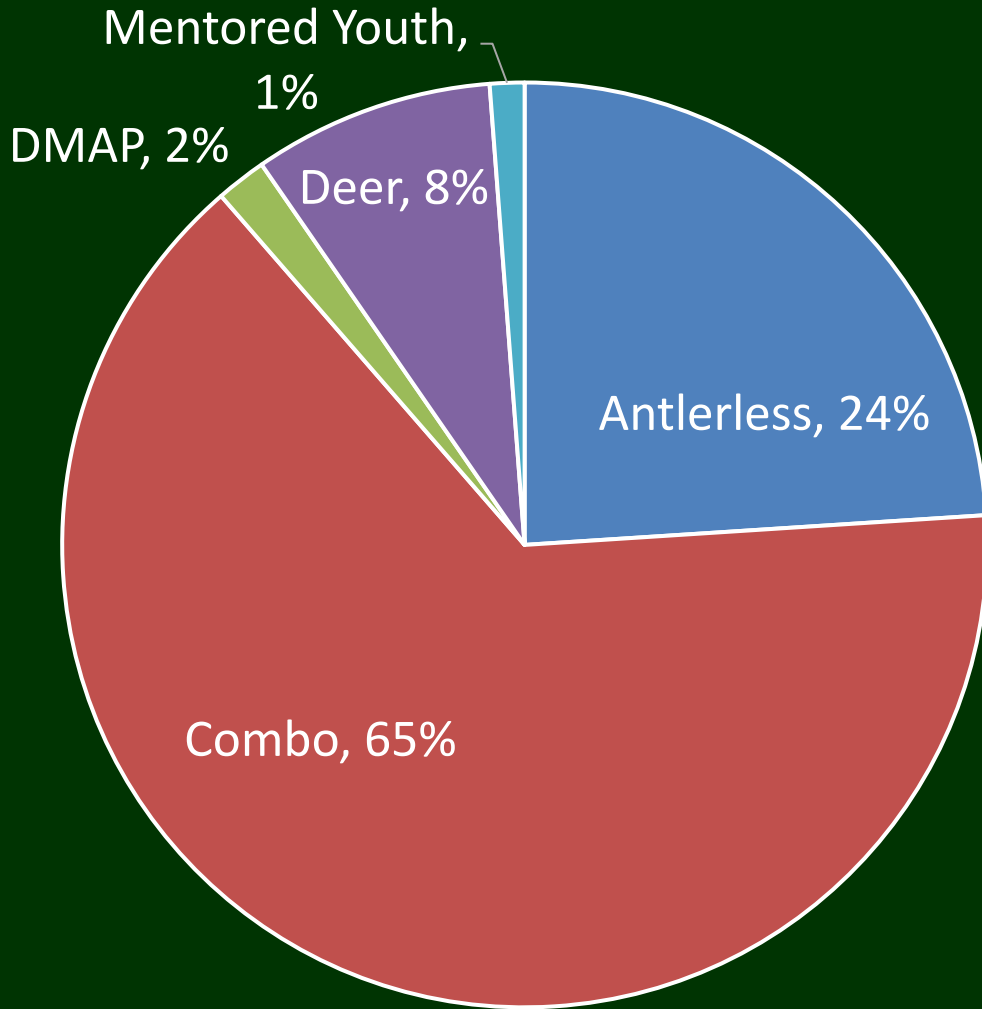
Harvest by Season



Data through 12/4/24



Harvest by License



	Antlerless Harvest by License Type
Antlerless	69%
Combo	23%
DMAP	5%
Deer	3%
Mentored Youth	1%



Reported County Harvests

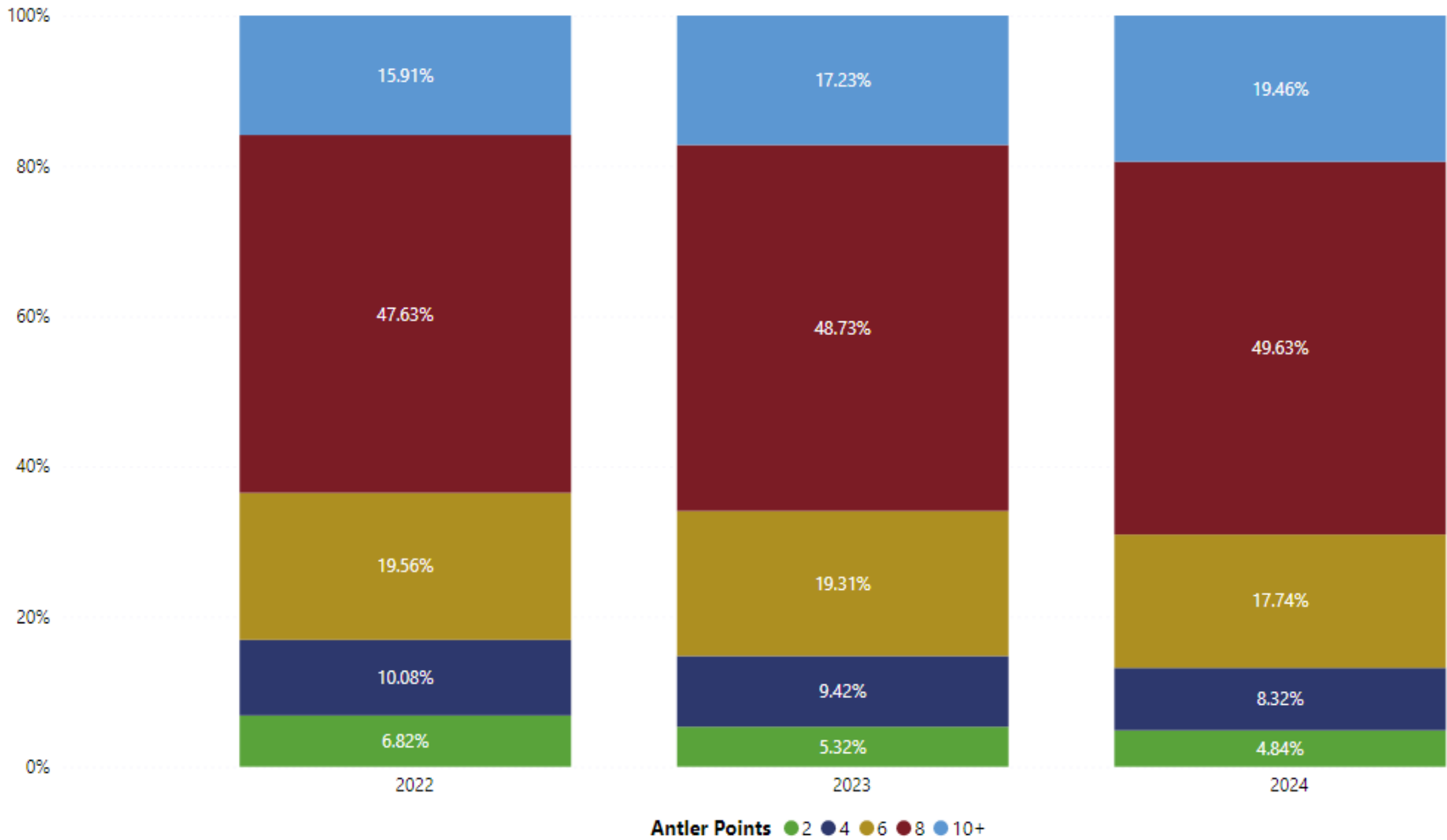
Top 5	Antlered Harvest	Antlerless Harvest	Total Harvest
Sanilac	4,040	2,053	6,093
Jackson	3,595	1,799	5,394
Saginaw	3,642	1,464	5,106
Newaygo	3,094	2,000	5,094
Montcalm	3,410	1,584	4,994

Bottom 5	Antlered Harvest	Antlerless Harvest	Total Harvest
Keweenaw	145	4	149
Luce	234	7	241
Gogebic	322	21	343
Wayne	281	114	395
Baraga	435	12	447



Antler Points

Antler Points



Factors Potentially Influencing LP Harvest

- Early corn harvest
 - 95% of corn was harvested by November 17th typically between 60-70%
- Acorn crop

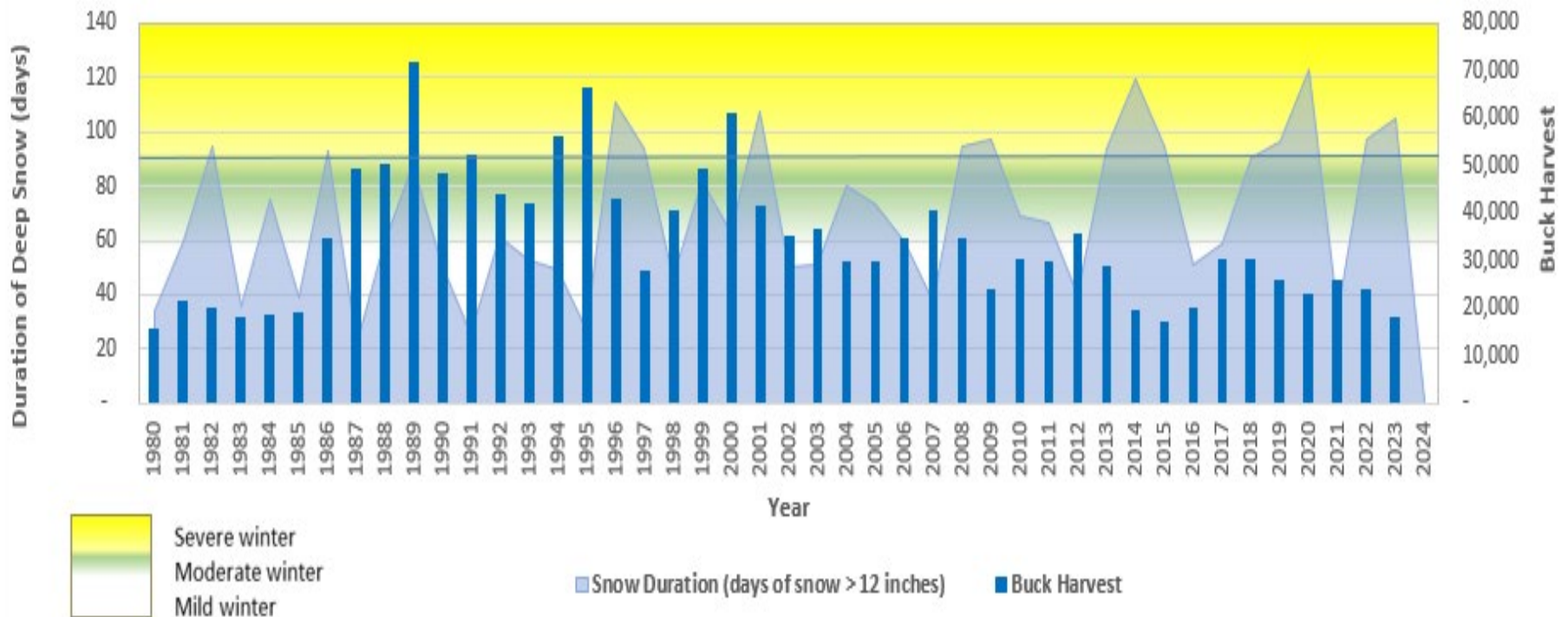
MI Statewide Acorn Harvest 2022-2024						
Year	Excellent	Above Average	Average	Below Average	Very Poor	Not Sure
2022	2%	4%	29%	15%	16%	34%
2023	7%	12%	33%	9%	14%	26%
2024	6%	10%	33%	9%	15%	26%

- EHD impacts in SW Michigan

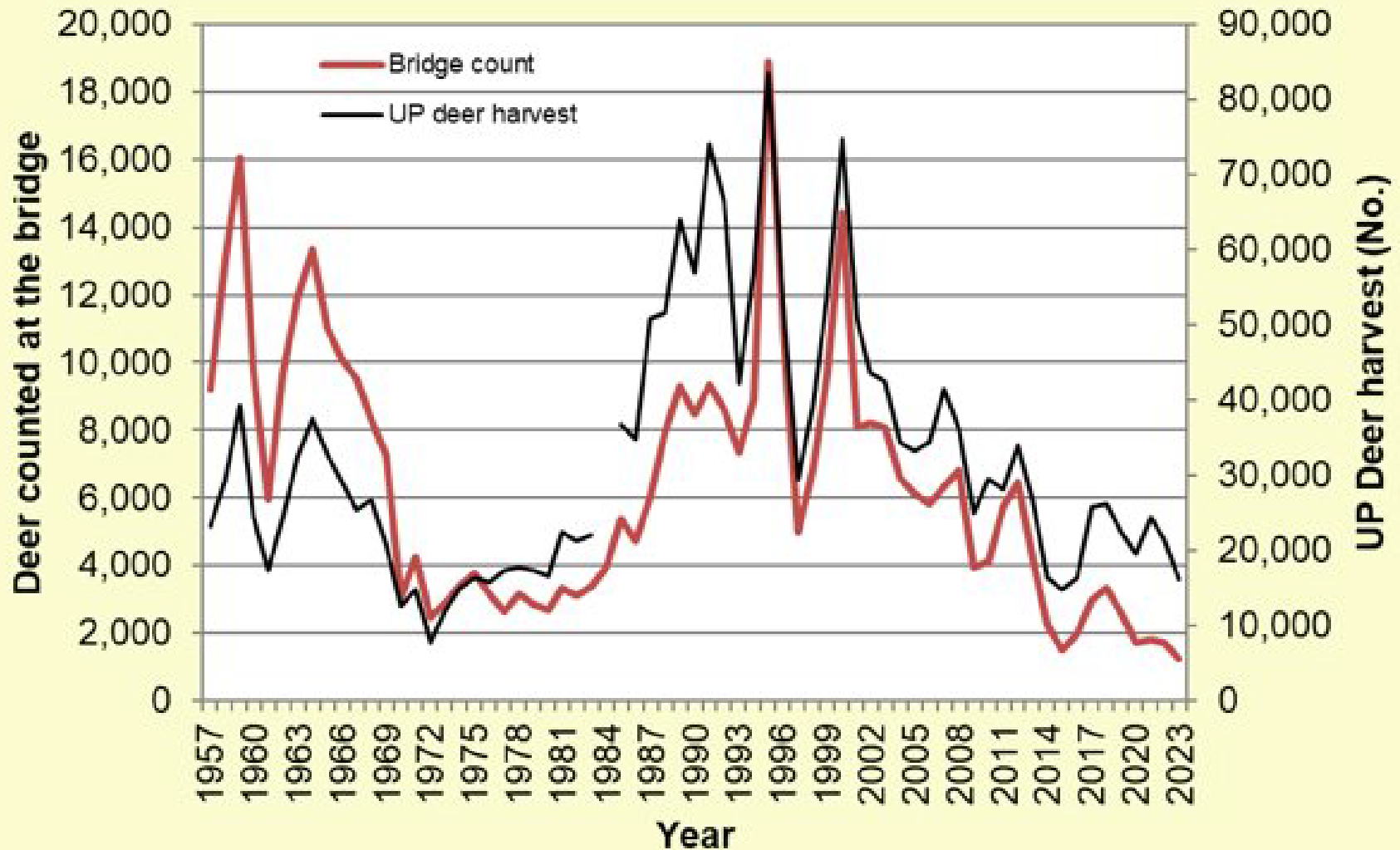


Factors Potentially Influencing UP Harvest

Winter Conditions & Buck Harvest in Michigan's Upper Peninsula

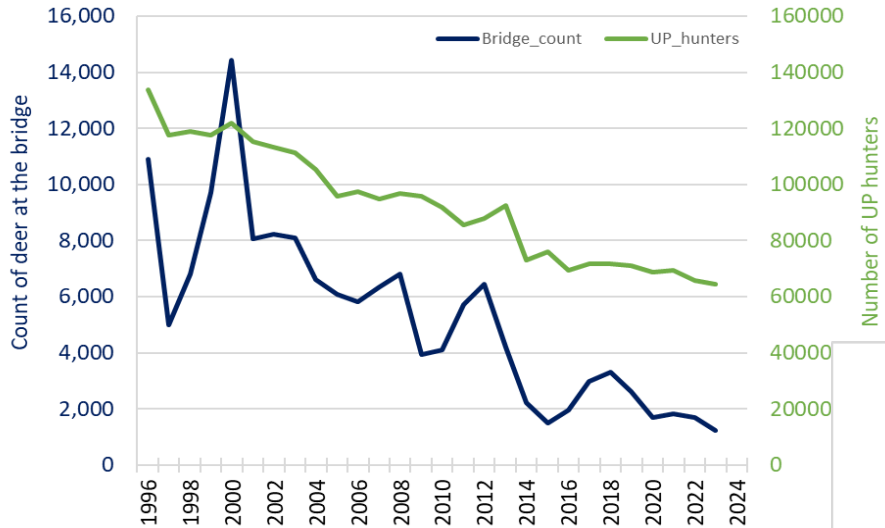


Factors Potentially Influencing UP Harvest

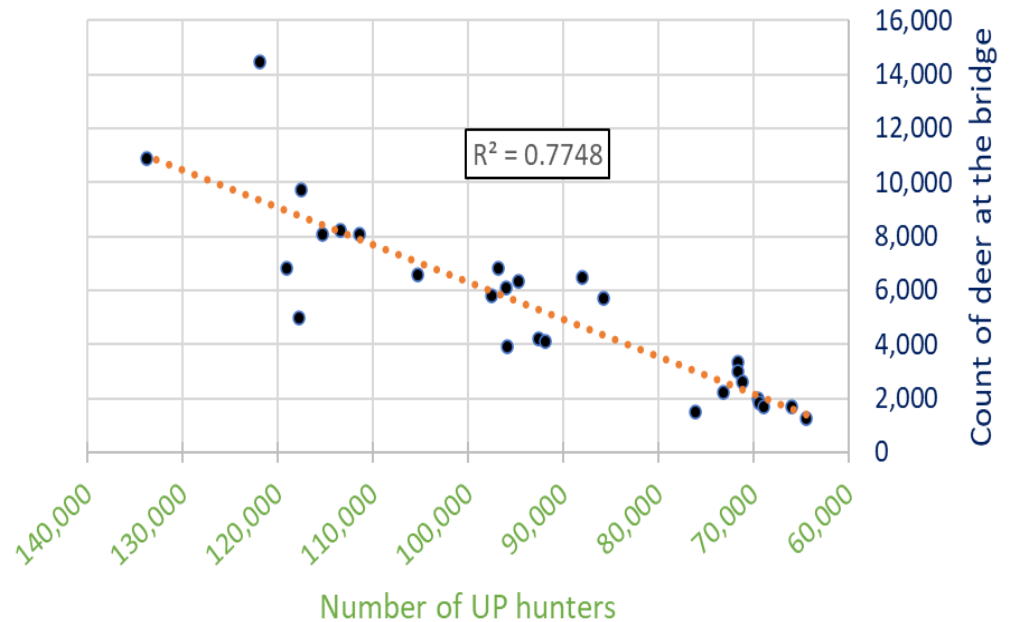


Factors Potentially Influencing UP Harvest

Source data: Michigan Department of Natural Resources & Mackinac Bridge Authority; 1996-2023



Source data: Michigan Department of Natural Resources & Mackinac Bridge Authority; 1996-2023



Chronic Wasting Disease Update

- As of December 6, 2024
 - Completed tests on 2,629 deer statewide
 - Goal of 4,622
 - 1,895 deer from priority surveillance area (22 counties in UP/NLP)
 - Numbers changing by the day as testing is ongoing
 - No new CWD detections in new locations
 - 4 total positive animals for the year
 - Jackson County (2) and Montcalm County (2)
 - Total of 257 confirmed cases to date since 2015

*Does not include hunter service testing or testing via Michigan DNR Wild Game Donation Program



Bovine Tuberculosis Update

- As of December 6, 2024
 - Completed tests on 5,721 deer statewide
 - 3,563 deer from priority surveillance areas, including 4-county area and 7 surrounding counties
 - 5 confirmed cases in Alpena
 - Overall, 1,028 deer have tested positive for TB since 1975

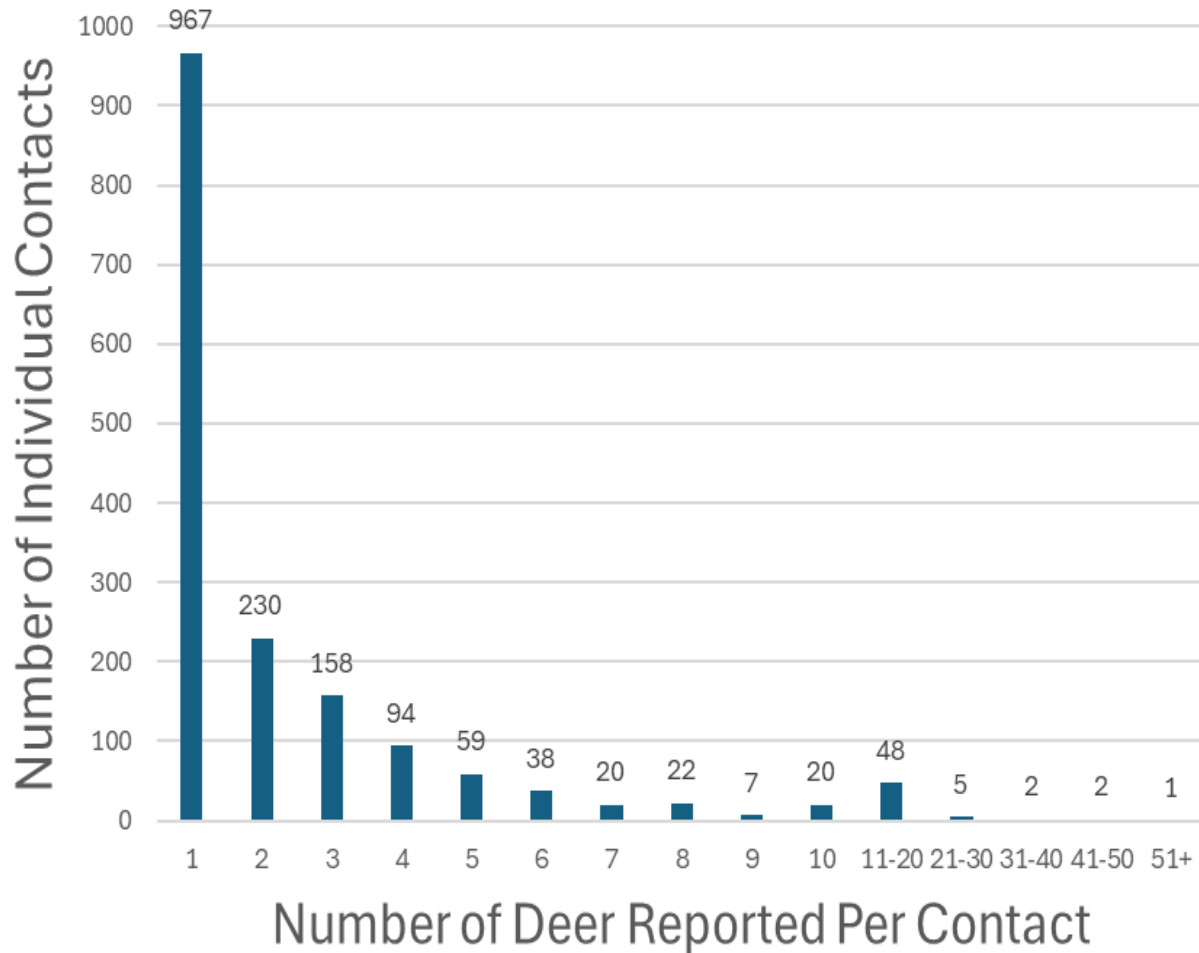


Epizootic Hemorrhagic Disease Update

- As of December 4, 2024
 - 15 counties tested positive for EHD
 - Allegan, Barry, Berrien, Branch, Calhoun, Cass, Genesee, Hillsdale, Jackson, Kalamazoo, Kent, Lenawee, Ottawa, St. Joseph and Van Buren
 - 4,456 deer reported through Eyes-in-the-Field
 - Likely a minimum number



EHD Update



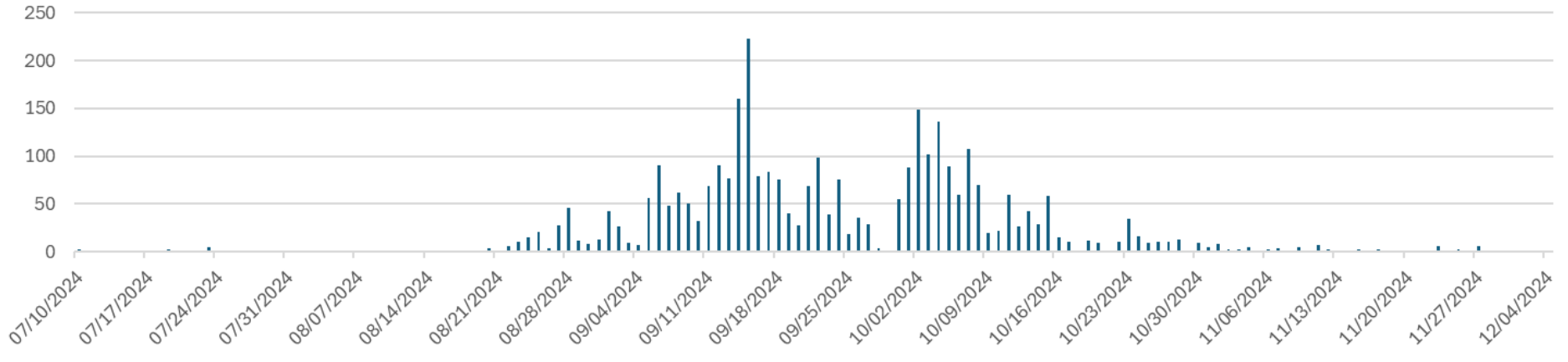
- 1,673 individual reports via Eyes In The Field
- Data doesn't include phone calls to field offices/CSCs





EHD Update

EHD Deer Reported by Date



EHD Update

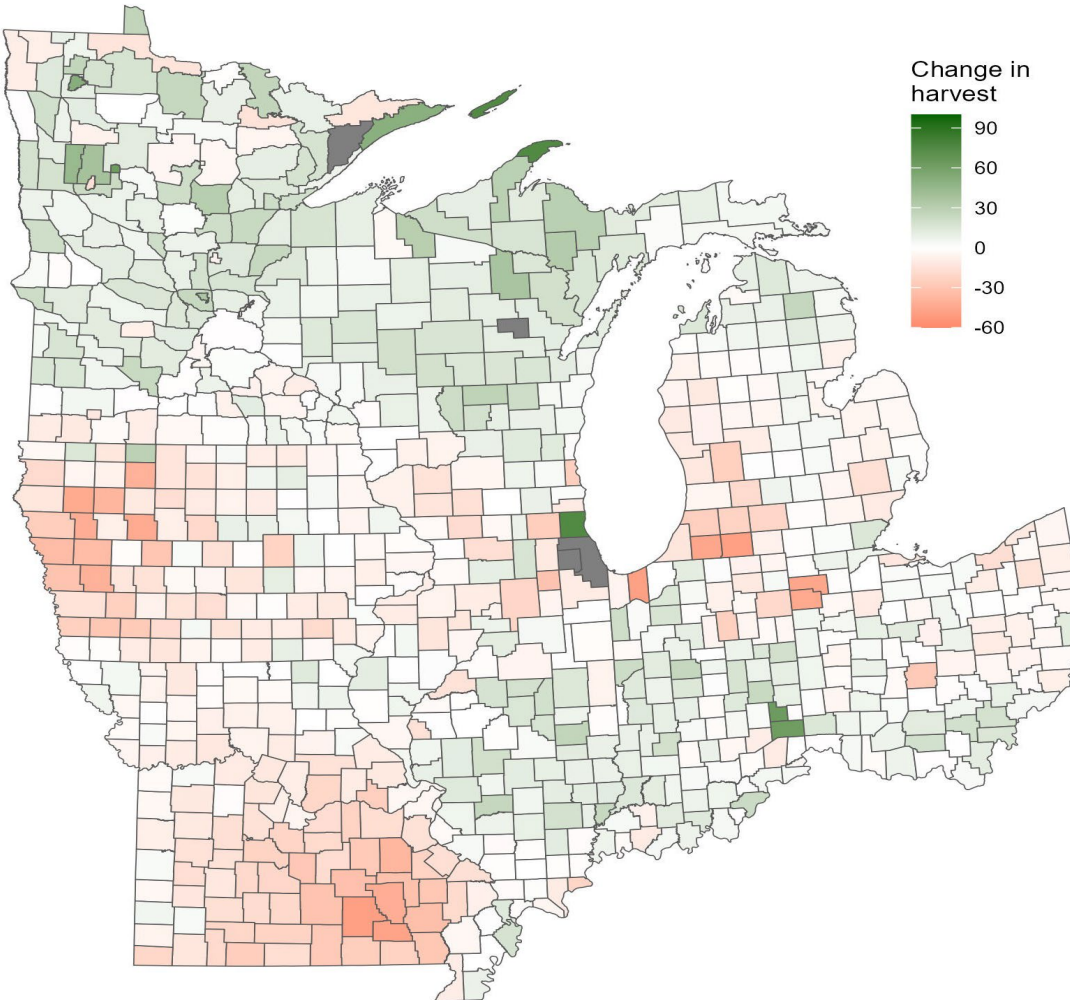
	2012	2024
Confirmed Counties	30	15
Deer reported	~15,000	~4,500

Ionia	2498	Kent	964
Kent	1950	St. Joseph	525
Calhoun	1324	Van Buren	472
Barry	1319	Kalamazoo	441
Montcalm	910	Calhoun	377
St. Joseph	779	Cass	331
Branch	659	Barry	313
Hillsdale	654	Ottawa	308
Cass	617	Allegan	232
Jackson	578	Berrien	128



EHD Update

Change in deer harvest between 2023 and 2024 (12.03.2024)



St. Joseph: **-48%**
Cass: **-45%**
Van Buren: **-25%**
Kent: **-24%**
Kalamazoo: **-23%**
Barry: **-18%**



EHD Update

Why not change regulations ahead of season?

- Reduce antlerless licenses?
 - We know ~50% success rate
 - Of those successful hunters, 92% take only 1 or 2 deer
- Population dynamics
 - Need to remove 35-40% of deer to maintain a stable population
 - Density-dependent
 - Lower population density = higher population growth rate
- Hunter behavior
 - Hunters tend to self-limit, especially with known local mortality events
- Mortalities of these events are often compensatory, not additive
 - Many deer that died from EHD would have likely been killed by hunters



St. Joseph County Example

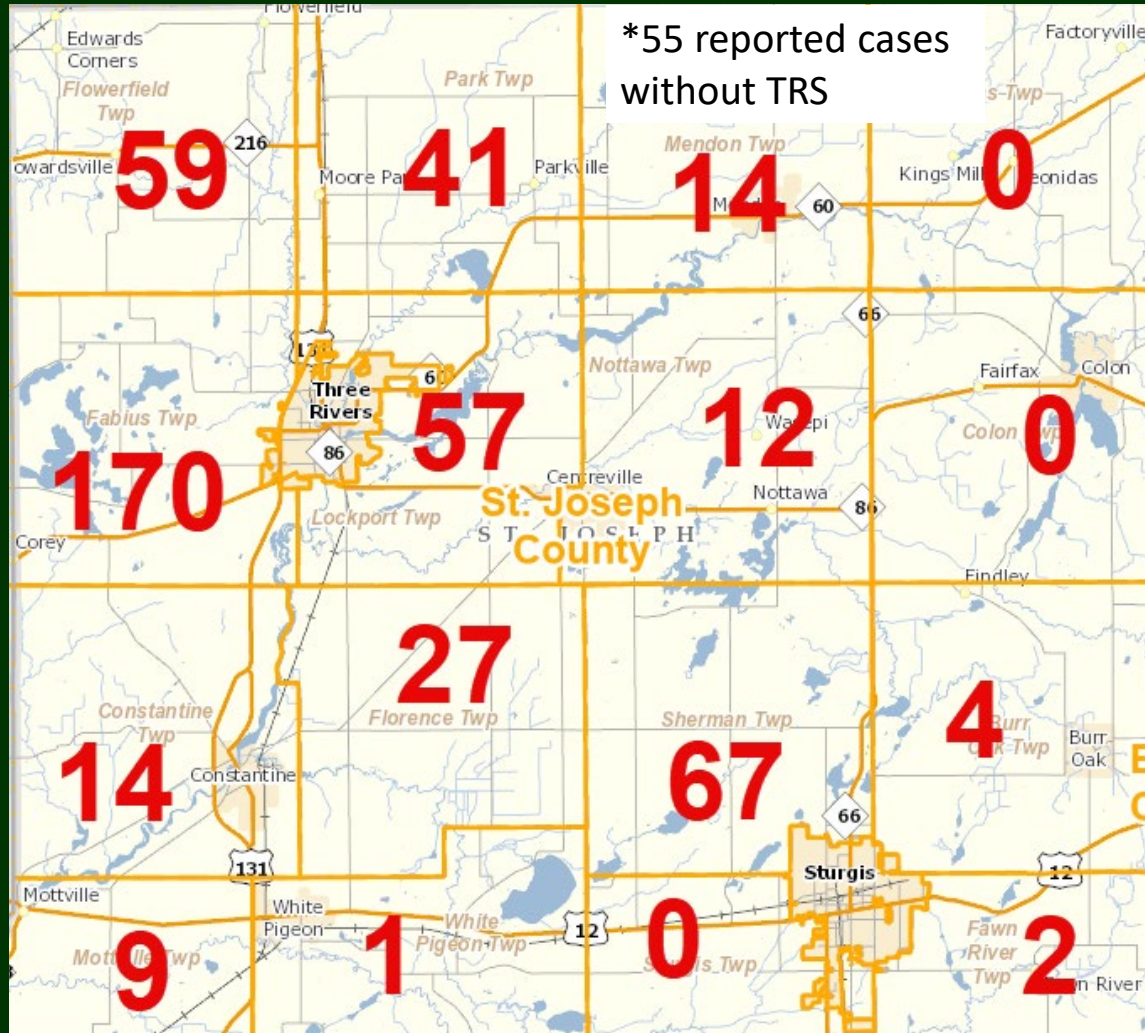
-526 reported deer
-High mortality in localized areas

St. Joseph County reported harvest

- 2024 - 1611 *thru 12/4
- 2023 - 3703
- 2022 - 3535

St. Joseph County average estimated harvest

- 5 year avg - 4666
- 10 year avg - 3868
- 20 year avg - 4401



Final Season Estimates

- Mail survey sample of licensed hunters
- Submit after all 2024 harvest is complete



Deer Stakeholder Engagement Updates

- DMI process has concluded
 - Participants are being surveyed to evaluate process and thoughts on how to proceed
- Deer Advisory Teams
 - Upper Peninsula Team
 - Lower Peninsula Team
 - Kick off meeting with both groups mid-December



Deer Regulations Moving Forward



Proposing to reset regulation schedule

- Present for information in April instead of June
- Up for Action in May instead of July
- Now possible with online harvest reporting
- Making sure Regulations Summaries are in stores and available on time

We are trying to build a long-term process/more stable regulations cycle

- Deer Advisory Teams



Thank You



www.michigan.gov/deer

