

Lower Peninsula Timber Cruise Test Sites

Four demonstration sites for the new timber cruise protocol have been established in the Northern Lower Peninsula by the Michigan Department of Natural Resources, Forest Resources Division. The four cover-types represented are aspen mixed, red pine, jack pine, and hardwood. The aspen mixed and red pine test cruise sites are approximately 1.3 miles east of Old 27 and south of Old State Road in Otsego County. The Jack Pine test cruise site is just over 3 miles south of Old State Road and just under a mile southeast of Crapo Lake in the southeastern corner of Otsego County. The hardwood test cruise site is in the north eastern corner of Antrim County about 3.5 miles straight south of Boyne Falls.

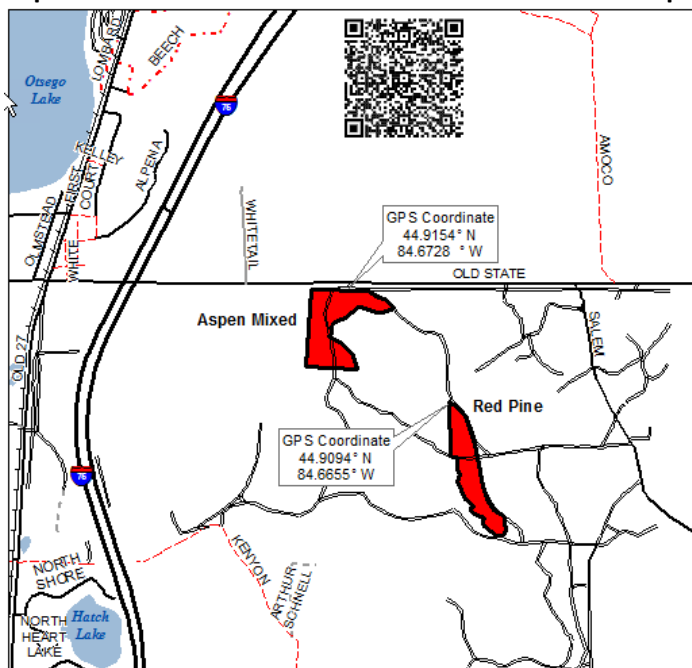
At the 4 demonstration sites, cruise plots are spaced out in a standard cruise grid. At each cruise plot, the first tree clockwise from magnetic north is marked with the number 1. Subsequent trees sampled are numbered sequentially and continue clockwise around the plot center (unmarked). The boundaries of these test cruise demonstration sites are not painted in. Please note that some plot numbers could be slightly off their exact location. If a person is trying to match individual tree data to a specific plot and the trees aren't lining up, they are slightly off in location.

Maps and data for these sites can be found online at

http://www.michigandnr.com/ftp/forestry/tsreports/Pilot_Test_Sites/ and from this QR code:



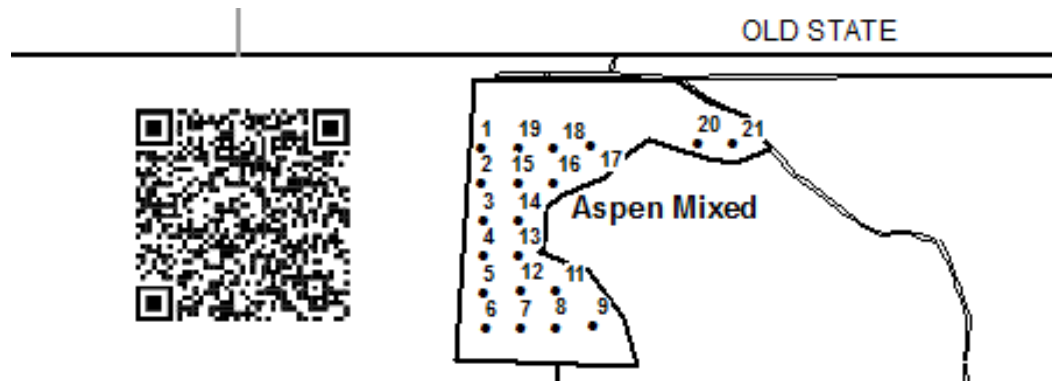
Aspen Mixed and Red Pine Test Cruise Site Locator Map



Lower Peninsula Aspen Mixed

Sawlog trees were sampled at a 1:5 ratio and pulpwood trees were sampled at a 1:10 ratio. A BAF of 15 was used.

Lower Peninsula Aspen Mixed Plot Map



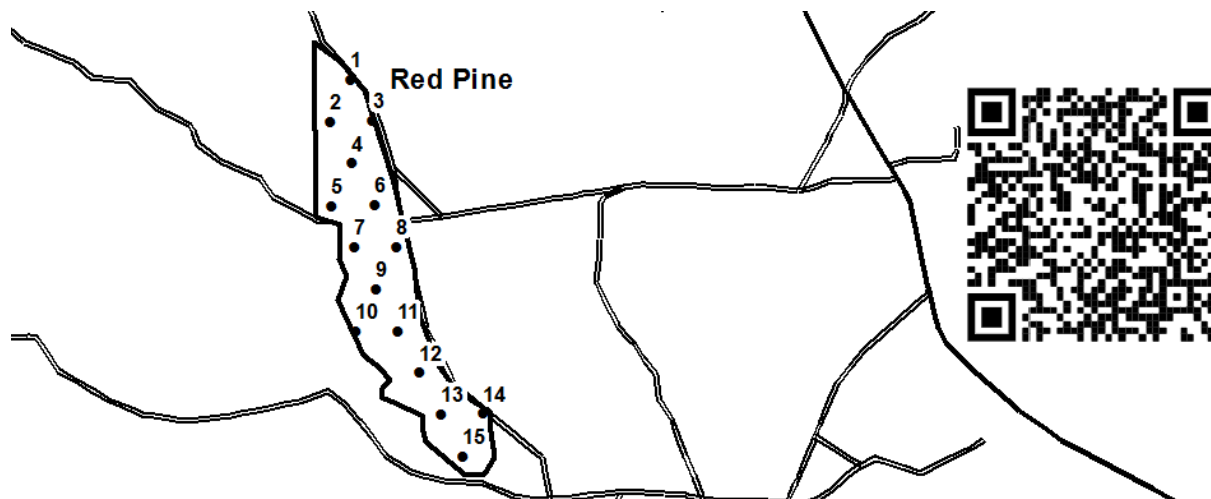
<http://www.michigandnr.com/ftp/forestry/tsreports/Pilot Test Sites/>

LP AS IM Tree List.csv	List of Tally Trees by Plot for New Cruise System
41-997-20 AS IM.pdf	Standard Cruise Report for New Cruise System
54-700-20 aspen 8 TSale.pdf	Cruise Report for Old Cruise System; Sawlogs to an 8" Top
54-703-20 aspen 10 TSale.pdf	Cruise Report for Old Cruise System; Sawlogs to a 10" Top

Lower Peninsula Red Pine

Sawlog trees were sampled at a 1:5 ratio and pulpwood trees were sampled at a 1:10 ratio. A BAF of 20 was used.

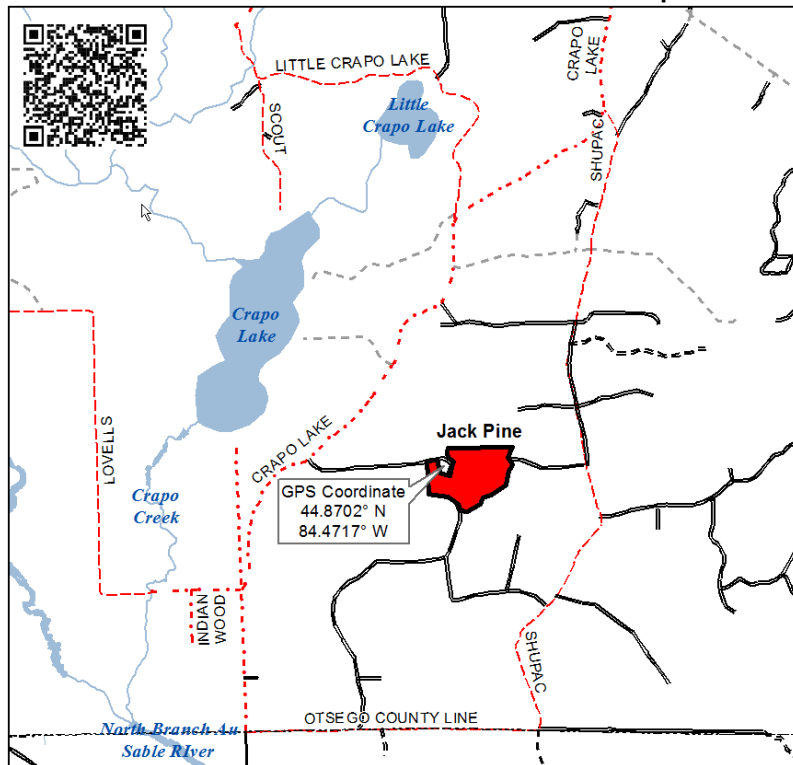
Lower Peninsula Red Pine Plot Map



<http://www.michigandnr.com/ftp/forestry/tsreports/Pilot Test Sites/>

LP RP IM Tree List.csv	List of Tally Trees by Plot for New Cruise System
54-702-20 rp IM.pdf	Standard Cruise Report for New Cruise System
54-702-20 rp 8 TSale.pdf	Cruise Report for Old Cruise System; Sawlogs to an 8" Top
54-705-20 rp 10 TSale.pdf	Cruise Report for Old Cruise System; Sawlogs to a 10" Top

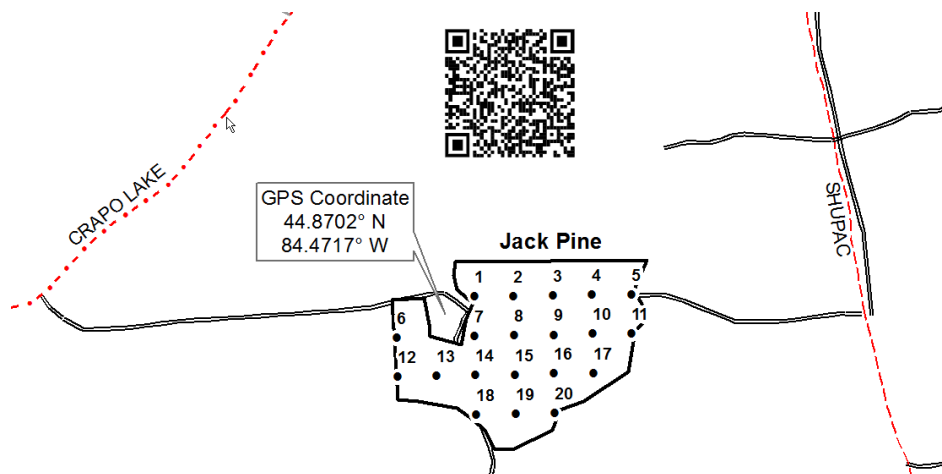
Lower Peninsula Jack Pine Test Cruise Site Locator Map



Lower Peninsula Jack Pine

Sawlog trees were sampled at a 1:5 ratio and pulpwood trees were sampled at a 1:10 ratio. A BAF of 10 was used.

Lower Peninsula Jack Pine Plot Map

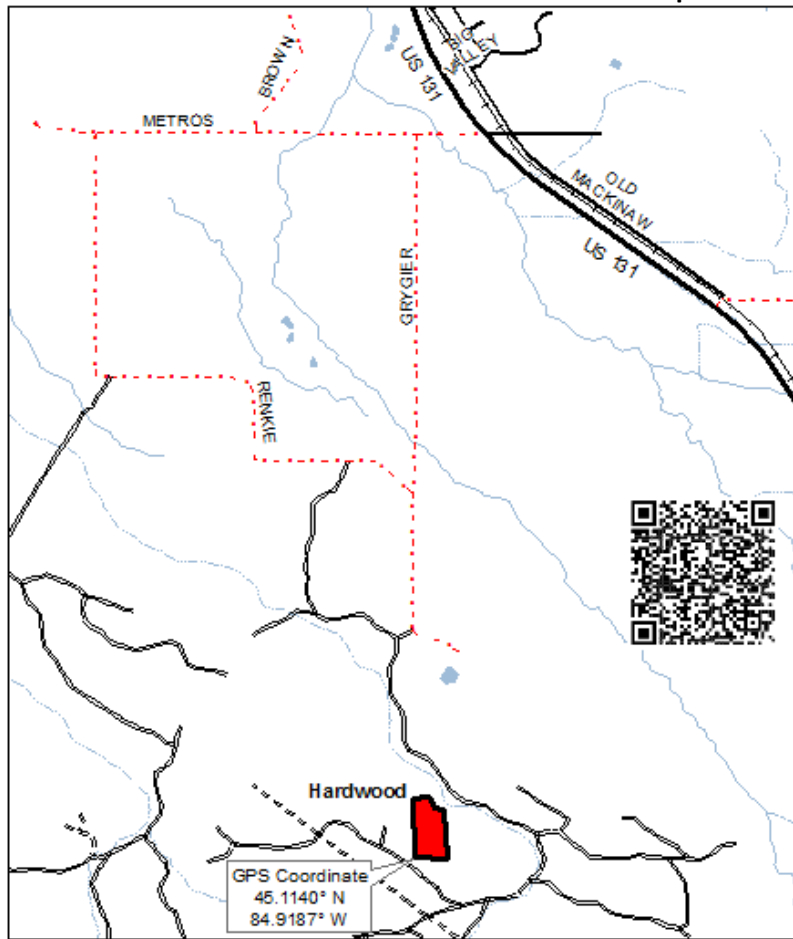


<http://www.michigandnr.com/ftp/forestry/tsreports/Pilot Test Sites/>

LP JP IM Tree List 54-701-20
 54-704-20 jp IM
 54-701-20 jp 8 TSale
 54-704-20 jp 10 TSale

List of Tally Trees by Plot for New Cruise System
 Standard Cruise Report for New Cruise System
 Cruise Report for Old Cruise System; Sawlogs to an 8" Top
 Cruise Report for Old Cruise System; Sawlogs to a 10" Top

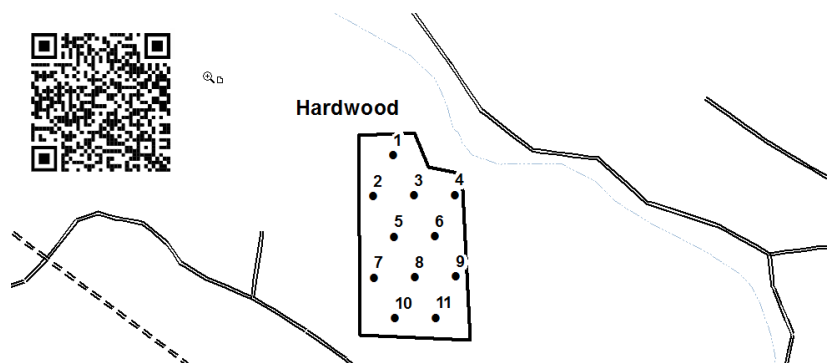
Lower Peninsula Hardwood Test Cruise Site Locator Map



Lower Peninsula Hardwood

Sawlog trees were sampled at a 1:5 ratio and pulpwood trees were sampled at a 1:10 ratio. A BAF of 10 was used.

Lower Peninsula Hardwood Plot Map



<http://www.michigandnr.com/ftp/forestry/tsreports/Pilot Test Sites/>

LP NHW IM Tree List
52-001-20 HW IM
52-001-20 HW 8 TSale

List of Tally Trees by Plot for New Cruise System
Standard Cruise Report for New Cruise System
Cruise Report for Old Cruise System; Sawlogs to an 8" Top