



Michigan Western Upper Peninsula Fishing Hotspots

Refer to Michigan Fishing Guide for Complete Rules for Each Water

Lake/Stream	T	R	S	Size (acres)	Ramp	Species	Comments
Baraga County							
<u>Lakes</u>							
Alberta Pond	49N	33W	18	17	4	BKT	8 inch minimum size
Bass Lake	48N	31W	26	U	U	BLG, LMB	
Beaufort Lake	48N	31W	21	462	2	NOP, SMB, WAE, YEP	
Big Lake	49N	34W	28	138	2	LMB, BLG	
Craig Lake	49N	31W	28	320	4	BCR, MUS, NOP, WAE, SMB	No motors; catch/release; Wae 2 @ 15" and larger
Crooked Lake	49N	31W	35	180	5	LMB, NOP, SMB, YEP	No motors; special regs;
Curwood Lake	50N	30W	29	70	5	SMB	
Huron Bay	51N	31W	8	8,000	2	NOP, SMB, WAE, LWF, YEP	Also salmon
Keewaydin Lake	49N	31W	31	127	1	SMB	Special regs, catch/release.
Keweenaw Bay				57,800	1	CHS, COS, LAH, LWF, LAT, STT, BCR, LMB, NOP	BNT, SPL,
King Lake	48N	33W	26	498	1		
Ned Lake	47N	32W	17	830	5	SMB, YEP	Difficult access
Parent Lake	48N	33W	9	170	2	WAE, YEP	Poor for walleye
Prickett Dam	50N	35W	21	826	2	BCR, BLG, WAE NOP, LMB	No MSL for northern pike with only 1 of 25 inches or larger
Roland Lake	51N	31W	13	40	3	BLG, LMB, YEP	
Ruth Lake	48N	31W	18	192	2	BCR, WAE, NOP	
Vermilac Lake	48N	34W	24	622	2	WAE, NOP	Shallow lake; no size limit on NOP with only 1 of 25 inches or larger
<u>Rivers</u>							
Clear Creek	50N	35W	35	--	--	BKT	Type 1
Falls River	50N	33W	16	--	--	BKT, BNT, STT	Type 3, US-41 to Lk Superior
W. Br. Huron River	50N	30W	6	--	--	BKT	Ravine River Rd.
Huron River	52N	31W	26	--	--	BKT, COS, STT	RA regs. Big Eric's Bridge; Type 4
Ravine River	51N	31W	3	--	--	BKT, STT	RA regs. Sicotte Rd; Type 4
Silver River	50N	32W	6	--	--	BKT	RA regs. Silver Falls Rd; Type 4
Slate River	51N	31W	8	--	--	BKT	RA regs. Skanee Rd; Type 4
Sturgeon River	51N	31W	28	--	4	BNT, SMB	US-41 to Prickett Dam Type-2; Dam to Lk Superior Type-3; Dam to Clear Creek closed

April 1 – June 30.

Gogebic County

Lakes

Bass Lake	45N	39W	15	187	3	BCR, BLG, NOP	Eurasian milfoil
Beatons Lake	45N	40W	6	323	1	NOP, SMB, SPL,	Type B
Big Lake	44N	41W	16	132	1	NOP, SMB, WAE, YEP	Cisco chain; boundary water
Big African Lake	45N	41W	35	86	5	BCR	Cisco chain
Bluebell Lake	45N	43W	20	U	U	BCR, NOP	
Bobcat Lake	46N	43W	27	76	3	BCR, BLG	
Castle Lake	45N	38W	8	28	U	BKT	Type A
Chaney Lake	45N	45W	15	520	2	BCR, YEP	lots of small bullhead
Cisco Lake	45N	41W	33	506	1	BCR, BLG, LMB, NOP, WAE, YEP	Cisco chain
Clark Lake	44N	40W	5	820	3	LAT, SMB	Sylvania tract; special regs.
Cornelia Lake	45N	42W	25	14	4	BKT	Type A, walk-in/carry-in
Crooked Lake	45N	40W	34	566	1	BLG, LMB	Special regs, no motors
Cyrus Lake	44N	43W	35	22	4	BLG	
Deer Island Lake	44N	40W	23	281	5	SMB	Sylvania tract; special regs.
Dinner Lake	44N	39W	23	110	2	BLG	
Duck Lake	44N	39W	20	616	1	BCR, BLG, NOP, SMB, WAE, YEP	Eurasian milfoil
East Bay Lake	44N	41W	15	277	5	BCR, BLG, WAE, YEP	Cisco chain; launch at Big Lake
Finger Lake	43N	38W	13	58	U	LMB, YEP	Type B (no trout present)
Fishhawk Lake	44N	41W	15	77	5	BCR, MUS, WAE, YEP	Cisco chain; launch at 1000 Isl. Lake
Gaylord Lake	45N	43W	21	74	U	BCR, BLG, LMB	
Henry Lake	45N	44W	3	50	2	BLG	
Holly Lake	45N	42W	30	U	U	BLG, LMB, NOP	
Imp Lake	44N	38W	16	111	1	SPL	Type B
Indian Lake	44N	41W	13	129	5	BCR, BLG, MUS, YEP	Cisco chain; launch at 1000 Isl. Lake
Langford Lake	45N	42W	25	470	2	BCR, BLG,	Eurasian milfoil
Lindsley Lake	44N	41W	9	156	5	BCR, BLG, MUS, NOP, WAE, YEP	Cisco chain; launch at 1000 Isl. Lake or Cisco Lake
Little Beatons Lake	46N	41W	36	75	4	BLG	FR 5167 (4WD) or portage from Beatons Lake
Little Duck Lake	44N	39W	7	42	3	RBT	Type B; designated trout lake
Marion Lake	45N	38W	29	318	1	BLG, WAE, LMB	Launch at campground
McDonald Lake	46N	46W	14	387	3	BCR, BLG	
Mishike Lake	45N	44W	12	13	U	Minnows	Type A, no trout present
Moon Lake	44N	39W	33	93	1	SPL	Type B
Morley Lake	44N	41W	16	59	5	MUS, NOP, WAE, YEP	Cisco chain; launch at 1000 Isl. Lake
Plymouth Lake	45N	44W	12	28	5	SMB, YEP	Type A; walk in off FR 8120, No trout present
Pomeroy Lake	45N	42W	21	303	2	BLG, LMB, WAE, MUS, NOP	

Poor Lake	44N	41W	14	106	5	BCR, BLG, YEP	launch at 1000 Island Lake
Presque Isle Flowage	46N	43W	32	875	2	BCR, YEP, MUS	
Record Lake	45N	41W	35	68	5	BCR, BLG, NOP, WAE	Cisco chain; launch at 1000 Isl. Lake
Redboat Lake	46N	44W	35	28	2	BKT	Type D
Scout Lake	44N	39W	25	25	U	BLG, WAE	
Summitt Lake	45N	43W	36	21	4	BLG, LMB	
Sunday Lake	47N	45W	8	212	1	BCR, BLG WAE, YEP	No MSL for northern pike with only 1 of 25 inches or larger
Tamarack Lake	44N	37W	6	325	2	BLG, WAE, YEP	
Taylor Lake	45N	38W	34	110	3	BLG, LMB	
Thousand Isl. Lake	44N	41W	11	1078	1	BCR, BLG, LMB, MUS, NOP, WAE	Cisco chain
Thrush Lake	45N	44W	3	17	2	BLG	
West Bay Lake	44N	41W	15	191	5	WAE, YEP	Cisco chain; launch at Big Lake
West Bear Lake	44N	40W	2	68	U	BLG, LMB	Sylvania tract; special regs.

Rivers

Big Carp River	50N	45W	1	--	--	BKT, COS, RBT	Type 3; walk-in access; Porkies Park
Black River	49N	46W	10	--	1	BKT, BNT, CHS, STT	Upstream of US-2 Type-1, From US-2 to Rainbow Falls Type-2, below Rainbow Falls Type-3.
Cisco Br. Ont. River	46N	41W	32	--	--	BKT	Access is tough
Duck Creek	44N	39W	16	--	--	BKT	Type 6 below RR bridge
Little Carp River	50N	45W	13	--	--	BKT, COS	special regs; Porkies Park
Maple Creek	49N	46W	18	--	--	STT	Type 3 from Bridge to Lk Sup.
Ohman Creek	49N	48W	32	--	1	BNT	Down from CR 505 Type 3
Mid. Br. Ont. River	45N	39W	19	--	--	BKT, BNT	Type 2 above Agate Falls, Type 3 below Agate Falls
Powder Mill Creek	47N	46W	29	--	--	BKT	Fish from Harding Rd to US-2
Presque Isle River	50N	45W	30	--	--	RBT	Above Manabezho Falls Type-2, below falls Type-3.
Welch Creek	47N	47W	10	--	--	BKT	Spring Lane access

Houghton County

Lakes

Boston Pond	55N	33W	8	140	2	YEP, NOP	Good place for shore fishing
Clear Lake	51N	36W	4	24	2	BKT	Type D
Echo Lake	49N	36W	30	45	U	BLG, SMB	
Estes Lake	48N	36W	13	23	4	BLG	
Grand Traverse Bay	55N	31W	4	--	1	CHS, COS, LAT, LWF, LHR	
Lake Emily	52N	36W	34	54	3	BLG, RBT	Two-story lake, Type B
Lks Roland- Gerald	52N	36W	13	260	5	BLG, RBT, LMB LAT	Twin Lakes State Park; Type B; launch at Lake Roland
Lake On Three	47N	36W	34	25	U	BKT	Type B
Lake Thirteen	47N	36W	13	75	U	BLG, YEP	

Otter Lake	52N	34W	11	935	1	BCR, NOP, SMB, WAE	
Penegor Lake	49N	36W	30	10	U	BKT	Type A
Pequet Lake	48N	35W	28	U	U	BLG	
Perrault Lake	54N	35W	34	39	4	BKT	Type D
Pike Lake	51N	36W	11	80	3	BLG, WAE, LMB, YEP	
Portage Lake	55N	34W	36	10,970	1	BCR, NOP, SMB, WAE, YEP	
Rice Lake	55N	31W	18	680	2	NOP, WAE	no size limit on NOP with only 1 of 25 inches or larger
Sandy Lake	51N	36W	3	101	3	BCR, BLG	
Torch Lake	55N	32W	6	2,659	1	NOP, SMB, WAE	Fish consumption advisory

Rivers

Big Traverse River	56N	31W	33	--	--	STT	Type 3
Elm River	53N	36W	3	--	--	BKT, STT	Type 4
Graveraet River	45N	36W	2	--	--	STT	Type 4 below Deer Creek
Jumbo River	47N	37W	22	--	--	BKT, STT	Type 1
Little Elm River	53N	36W	6	--	--	STT	Type 4
Onion Creek	48N	37W	7	--	--	BKT	Type 1
N. Br. Otter River	53N	34W	16	--	--	BKT	Downstream from Valley Rd; mainstem = Type 3
W. Br. Otter River	51N	35W	19	--	--	BKT, COS	Pike Lake Road
E. Br. Ont. River	47N	36W	22	--	--	BKT, COS, STT	Type 3 below M-28
Pilgrim River	54N	34W	27	--	--	BKT	RA regs. Few STT and COS; Type 4 downstream of Hwy 41
Salmon Trout River	55N	35W	20	--	--	STT	Type 3 below Redridge Dam
Trap Rock River	56N	32W	29	--	--	BKT, STT	Type 4 below Cemetery Rd

Iron County

Lakes

Hannah (Webb) Lake	46N	35W	30	64	3	NOP, YEP, BLG	Type A, no trout present
Killdeer Lake	46N	37W	29	9	3	BKT	Type A
Perch Lake	46N	35W	22	994	3	YEP, BLG, NOP, WAE	No MSL for northern pike with only 1 of 25 inches or larger
Tepee Lake	46N	37W	13	124	3	BLG, LMB, NOP	

Keweenaw County

Lakes

Copper Harbor	59N	28W	31	--	1	SPL	
Deer Lake	57N	29W	7	332	U	NOP, YEP	
Gratiot Lake	57N	30W	5	1,438	1	NOP, SMB, WAE	
Lac La Belle	58N	29W	32	1,146	1	NOP, SMB, BCR WAE	
Lake Fanny Hooe	59N	28W	33	231	1	SMB, SPL, LAT, WAE	All trout 8 inch minimum size limit
Lake Medora	58N	29W	10	695	1	SMB, WAE	
Lost Lake	58N	28W	14	6	5	BKT	Type D
Manganese Pond	58N	28W	5	57	4	YEP, BLG	no trout present

No Name Pond	57N	31W	8	4	5	BKT	Type A
Schlatter Lake	58N	27W	16	280	5	NOP, YEP	Most pike are small, no size limit w/ only 1 of 25" or larger

Rivers

Fanny Hooe River	59N	28W	33	--	--	SMB, SPL, WAE	Type 4
Gratiot River	57N	32W	19	--	--	BKT, COS, STT	Type 1 down to Bridge, then Type 4 to Lk Superior
Tobacco River	56N	30W	7	--	--	BKT	Type 4 below Black Creek

Marquette County

Lakes

Angeline Lake	47N	27W	10	96	U	All species trout	All trout 8 inch min size limit
Arfelin Lake	49N	30W	21	66	2	SPL	Type B
Cedar Lake	47N	27W	11	U	U	BLG	Type B, no trout present
Deer Lake Basin	48N	27W	27	950	U	WAE	catch/release, special regs.
Lake Independence	51N	27W	14	2,000	U	WAE, YEP, NOP	
Lake Michigamme	48N	30W	27	4,260	1	YEP, NOP, MUS, SMB, WAE	
N. Pauls Lake	50N	28W	30	5	5	BKT	Type D, walk-in only
S. Pauls Lake	50N	28W	31	8	5	BKT	Type D, walk-in only
Presque Isle Harbor	48N	25W	11	--	1	CHS, COS, LAT, LWF, SPL	
Rock Lake	47N	27W	5	28	U	NOP	Private, no access
N. Rockingchair Lk	49N	28W	10	8	5	BKT	Type D
S. Rockingchair Lk	49N	28W	10	5	5	BKT	Type D
Sporley Lake	46N	24W	31	68	2	BNT, SPL, SMB	Type E
Squaw Lake	45N	30W	16	247	1	BLG, LMB, NOP, RBT	

Rivers

Big Garlic River	49N	27W	12	--	--	BKT, STT	RA regs. Type 4 below forks
Carp River	47N	25W	5	--	--	BKT, CHS, STT	Good BKT above Carp R. Impoundment, Type-2 from Deer Lk to Morgan Cr, then Type 3 down to Lk Superior
Chocolay River	47N	24W	9	--	--	COS, STT	Below Big Creek to Lk Superior Type 3
Dead River	48N	25W	10	--	--	BNT, CHS	Type 1 from Hoist to Forestville Basin
Little Huron River	52N	29W	20	--	--	BKT	RA regs.
Iron River	51N	27W	13	--	--	BKT, STT, WAE	RA regs.
Salmon Trout River	51N	28W	13	--	--	BKT, COS, STT	Coaster stream; special regs. Access @ Triple A, Huron Mtn Club, or Northwestern Rd
Yellow Dog River	50N	27W	17	--	--	BKT, BNT, RBT	AAA – Road or Cty 510

Ontonagon County

Lakes

Bond Falls Flowage	46N	38W	7	2,127	1	BCR, NOP, SMB, WAE	
Calderwood Pond	46N	38W	10	13	5	Minnows	

Courtney Lake	50N	37W	4	34	3	BKT	Type B
Lake Gogebic	48N	42W	4	14,781	1	SMB, WAE, NOP, BLC, YEP	No MSL for northern pike with only 1 of 25 inches or larger
Lake of the Clouds	51N	43W	22	133	5	SMB	Special regs.; Porkies Park
Mirror Lake	50N	44W	2	83	5	SPL	Type C; Porkies Park
Paulding Pond	46N	39W	15	20	4	Minnows	No trout present
Six Mile Lake	50N	37W	4	72	5	BLG, NOP, YEP	
Sudden Lake	50N	37W	11	35	3	YEP	
Trout Creek Pond	47N	38W	14	4	5	BKT	Type C
Victoria Pond	50N	39W	31	282	1	BCR, NOP, WAE, YEP	
Rivers							
Big Iron River	49N	43W	2	--	2	CHS, STT	Type 3 below Koshak Bridge
Firesteel River	51N	37W	20	--	--	BNT, STT	Type 3 below M-26 (includes East and West branches)
Misery River	53N	37W	15	--	2	STT	Type 3 below bridge/lamprey barrier in section 15
Mid. Br. Ont. River	47N	38W	8	--	--	BKT, BNT	Type 2 above Agate Falls, type 3 below Agate Falls
W. Br. Ont. River	50N	44W	36	--	--	STT	Below Victoria Dam; special regs.
Ontonagon River	52N	40W	25	--	1	STT, BNT	Type 3 entire mainstem to Agate Falls, only 1 walleye > 23 inches
E. Sleeping River	53N	38W	25	--	--	STT	Type 3 below RR bridge in section 25
Two Mile Creek	46N	40W	9	--	--	BKT	Type 1

Key

Ramp Codes: 1 = Hard-surfaced ramp with sufficient depth to accommodate most boats

2 = Hard-surfaced ramp with limited depth

3 = Gravel ramp

4 = Carry-in launch for small boats

5 = None

U = Unknown

RA: Research Area Special Regulations, see pages 8 and 9

Species Abbreviations:

BCR = Black Crappie

BKT = Brook Trout

BLG = Bluegill

BNT = Brown Trout

CHS = Chinook Salmon

COS = Coho Salmon

LAH = Lake Herring

LAT = Lake Trout

LMB = Largemouth Bass

LWF = Lake Whitefish

MUS = Muskellunge

NOP = Northern Pike

RBT = Rainbow Trout

SMB = Smallmouth Bass

SPL = Splake

STT = Steelhead

WAE = Walleye

YEP = Yellow Perch

For questions please contact the DNR, Baraga Customer Service Center, 427 US 41 North, Baraga, Michigan 49908, or phone 906-353-6651

Lake and Stream Sportfishing Regulations

Refer to Michigan Fishing Guide for Complete Rules for Each Water

Table 1: General Fishing Regulations			
Species (NOTE 1)	Minimum Size (inches)	Daily Possession Limit	Possession Seasons
Largemouth Bass Smallmouth Bass (NOTE 2)	14"	5 in any combination	3rd. Sat. in June - Dec. 31: L. St. Clair, St. Clair R., Detroit R. (See NOTE 2) Sat. before Memorial Day - Dec. 31: All other waters including Gr. Lakes (except those listed in NOTE 2)
Walleye (NOTE 3)	15"	5	May 15 – March 15: Upper Peninsula Gr. Lakes and inland waters, and St. Marys R. Last Sat. in April – March 15: Lower Peninsula inland waters Open All Year: Lower Peninsula Gr. Lakes, L. St. Clair, St. Clair R. and Detroit R.
Northern Pike (NOTE 4)	24"	2	
Flathead Catfish	15"	5	Open All Year
Channel Catfish	12"	10	
Muskellunge (including Tiger Muskellunge) (See NOTE 4)	42" (See NOTE 4 for exceptions)	Only 1 per angler per license year (Mandatory Registration)	1st Sat. in June – March 15: All Gr. Lakes and inland waters and St. Marys R. 1st Sat. in June – Dec. 31: L. St. Clair, St. Clair R. and Detroit R.
Yellow Perch (NOTE 5)	No size limit	25	Open All Year <small>In Lake Superior the daily possession limit shall include up to an additional ten (10) round whitefish.</small>
Sunfishes (NOTE 6)		25 in any combination of the listed species	
White Bass		25 on Gr. Lakes, L. St. Clair, St. Marys R., St. Clair R., and Detroit R. 10 on inland waters	
Cisco, Lake Whitefish, Round Whitefish (NOTE 7)		10 in any combination on Gr. Lakes, Connecting Waters and Type F lakes, 5 in any combination on other inland waters	
Lake Sturgeon	Please see Table 2, p. 15 for Lake Sturgeon Regulations		
Smelt	No size limit	2 gallons	Open All Year (See p. 23, Table 5 for Netting Regulations)
All others (NOTE 8)	No size limit	No possession limit	Open All Year

The following regulations pertain only to inland lake Types A – F as listed on below. Maps are available online at: michigan.gov/fishingguide

Lake Type	Fishing Season	Possession Season	Tackle	Daily Possession Limit	Brook Trout	Brown Trout, Rainbow Trout, & Splake	Lake Trout	Coho, Chinook, & Pink Salmon	Atlantic Salmon
Minimum Size Limit (inches)									
A	Last Sat. in Apr. – Sep. 30	Last Sat. in Apr. – Sep. 30	All except minnows	5/3*	10"	12"	15"	10"	15"
B	Open All Year	Open All Year	All	5/3*	10"	12"	15"	10"	15"
C	Open All Year	Open All Year	All	5/3*	8"	8"	8"	10"	15"
D	Last Sat. in Apr. – Sep. 30	Last Sat. in Apr. – Sep. 30	Artificial lures only**	1	15"	15"	15"	10"	15"
E	Open All Year	Open All Year	All	3	15"	15"	15"	10"	15"
F	Open All Year	Lake Trout Jan. 1 – Oct. 31 Other Trout & Salmon open all year	All	5/3*	10"	10"	10"	10"	10"

* 5 fish, with no more than 3 trout 15" or greater.
 ** On Type D lakes, it is unlawful to use or possess live bait, dead or preserved bait, organic or processed food or scented material on any of the waters or on shore.
 ^ 5 fish in any combination, but no more than 3 fish of any one species, except up to 5 salmon (Chinook or coho) may be retained.

Trout Lake Types

The following regulations pertain only to inland stream Types 1 – 4, Research Areas (RA), and Brook Trout Restoration Areas (BTRA) as listed below. Maps are available online at: michigan.gov/fishingguide

Stream Type (Colors below are indicated accordingly on the maps online.)	All types of natural and artificial baits may be used on stream Types 1-4		Minimum Size Limit (inches)			Daily Possession Limit
	Fishing Season	Possession Season	Brook Trout	Brown Trout	Atlantic, Chinook, Coho & Pink Salmon, Lake Trout, Rainbow Trout (Steelhead), Splake	All Trout and Salmon
1 (Approx. 1,400 streams)	Last Sat. in Apr. – Sep. 30	Last Sat. in Apr. – Sep. 30	7"	8"	10"	5 fish, but no more than 3 trout 15" or greater
2 (14 streams)	Last Sat. in Apr. – Sep. 30	Last Sat. in Apr. – Sep. 30	10"	12"		
3 (60 streams)	Open All Year	Open All Year	15"	15"		
4 (130 streams)	Open All Year	Last Sat. in Apr. – Sep. 30 for Brook Trout, Brown Trout, and Atlantic Salmon Open all year for all other Trout and Salmon	7"	10"		

Trout Stream Types

Lake-Run Brook Trout Stream Regulations

Attention Anglers

The sport fishery in this portion of river is managed for quality trout through a **20 inch minimum size limit and 1-fish daily possession limit for brook trout, splake, and lake trout.**

The harvest season for these species from the last Saturday in April to September 30.

The lower portions of rivers that connect to Lake Superior in portions of the Baraga, Houghton, and Marquette Counties offer good habitat for brook trout that periodically migrate into these streams from Lake Superior. Current distributions of lake-run brook trout in Michigan and elsewhere suggest that having protective stream and Lake Superior sport fishing regulations may lead to re-emergence of spawning runs of Lake Superior brook trout. The brook trout size limit and possession limits here will match those of adjacent Lake Superior waters.

These regulations are being evaluated as part of a federally-funded study that is scheduled to run for at least 10 years (2025). Streams will be sampled via electrofishing on a 3-year rotation in fall to assess relative changes over time in brook trout abundance, size, and age structure. An angler diary program is also part of the evaluation and interested anglers should contact the DNR. Evaluation of findings will be contained in annual progress reports for the Sport Fish Restoration study, and a final report will be produced at the end of the study. **Your support of these regulations will help migratory brook trout populations.**



Rivers with these regulations and the upstream boundary where they occur on each river are shown below.

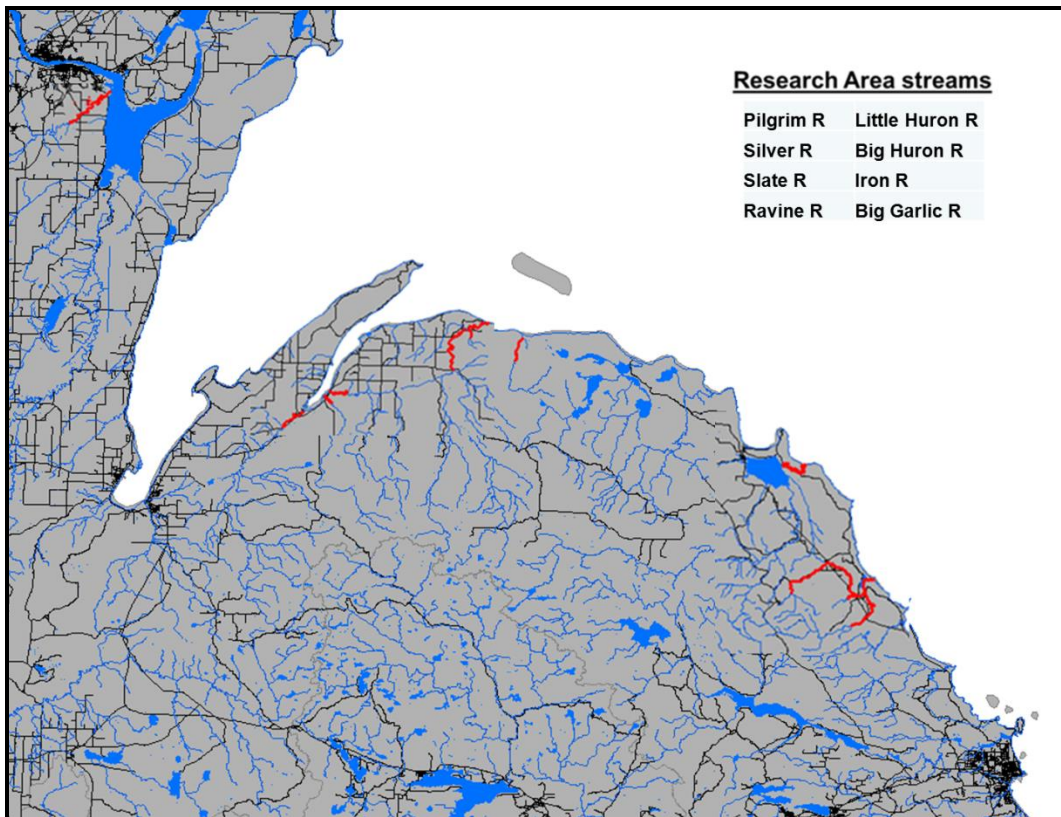
- **Pilgrim River** entire watershed
- **Silver River** to Silver River Falls
- **Slate River** to Slate River Falls
- **Ravine River** to Scitote Road
- **Big Huron River** to Big Eric's Bridge
- **Little Huron River** to unnamed road at T52N, R29W, S20
- **Iron River** to Lake Independence Dam
- **Big Garlic River** and tributaries to County Road 550

These regulations also apply to the **Portage/Torch Lake system** (including the Portage River, Portage Canal, North Entry and South Entry, Houghton County).

You may contact the following with any questions or comments;
[Michigan Department of Natural Resources Fisheries Division](http://michigan.gov/fishingguide)
 Baraga Customer Service Center

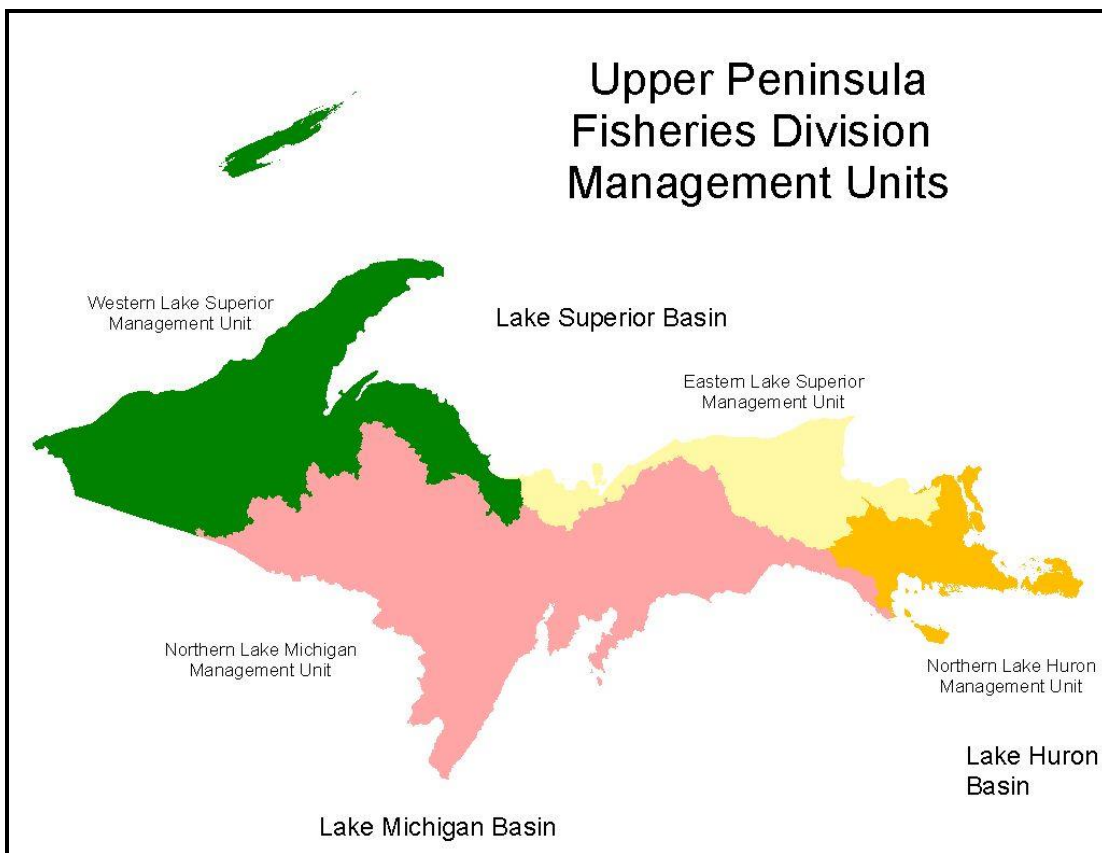
Lake-Run Brook Trout Stream Regulations

F0-200 Adfluvial Research Area Streams



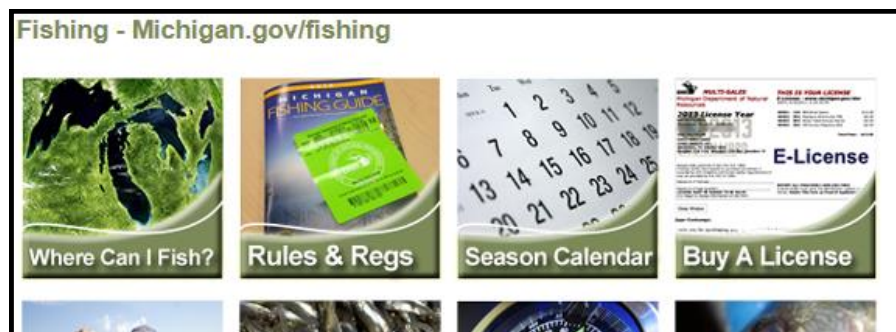
<u>Research River</u>	<u>Upstream Point</u>	<u>Downstream Point</u>	<u>River Miles</u>
• Pilgrim River	Headwaters	T54N, R33W, Sec 7 (mouth at Portage Lake)	10
• Portage/Torch Lake including Portage River, Portage Canal, North Entry and South Entry			
• Silver River	T.51N., R.32W., Sec.26 (Silver River Falls)	T.51N., R.31W., Sec 18 (mouth at Huron Bay)	5

• Slate River	T.51N., R.31W., Sec.9 (Slate River Falls, ½ mile upstream from Skanee Rd)	T.51N., R.31W., Sec 8 (mouth at Huron Bay)	1
• Ravine River	T.51N., R.31W., Sec.2 (Sicotte Road)	T.51N., R.31W., Sec 4 (mouth at Huron Bay)	3
• Big Huron River	T.52N., R.30W., Sec.35 (Big Eric's Bridge)	T.52N., R.29W., Sec 18 (mouth at Lake Superior)	6
• Little Huron River	T.52N., R.29W., Sec.20 unnamed bridge crossing located at the southern border of Sec. 20	T.52N., R.29W., Sec 17 (mouth at Lake Superior)	8
• Iron River	T.51N., R.27W., Sec.13 (Lake Independence dam)	T.51N., R.26W., Sec 18 (mouth at Lake Superior)	2
• Big Garlic River and tribs downstream of Co. Rd. 550	T.50N., R.26W., Sec.33 (CR-550)	T.50N., R.26W., Sec 21 (mouth at Lake Superior)	8



Michigan DNR Fisheries Division Website

There are numerous links on Fisheries Division's website that will help you with your fishing experience. Many of these links are very handy with smartphone technology.



Updated 2022

Fishing - Michigan.gov/fishing



Where Can I Fish?



Rules & Regs



Season Calendar



Buy A License



Weekly Fishing Report



Fish Stocking



Maps



Marked & Tagged Fish