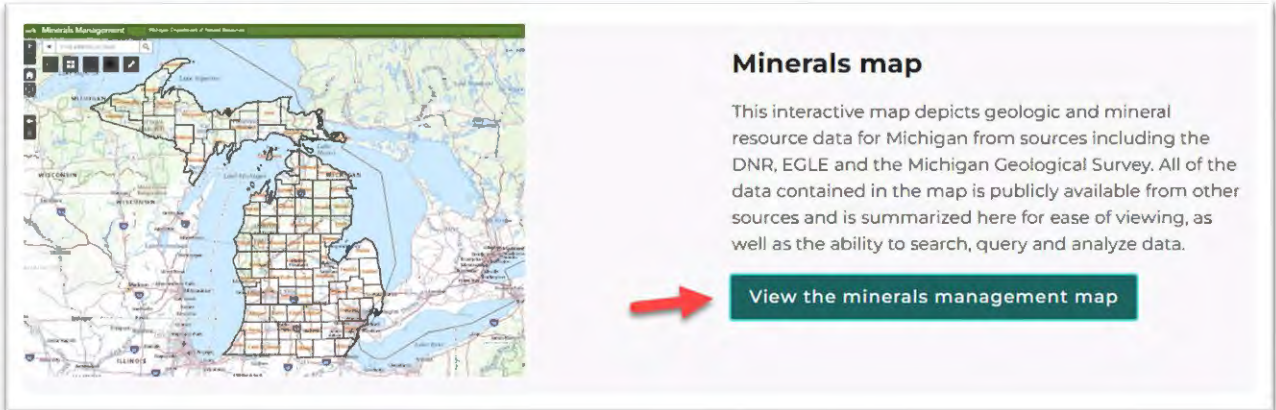
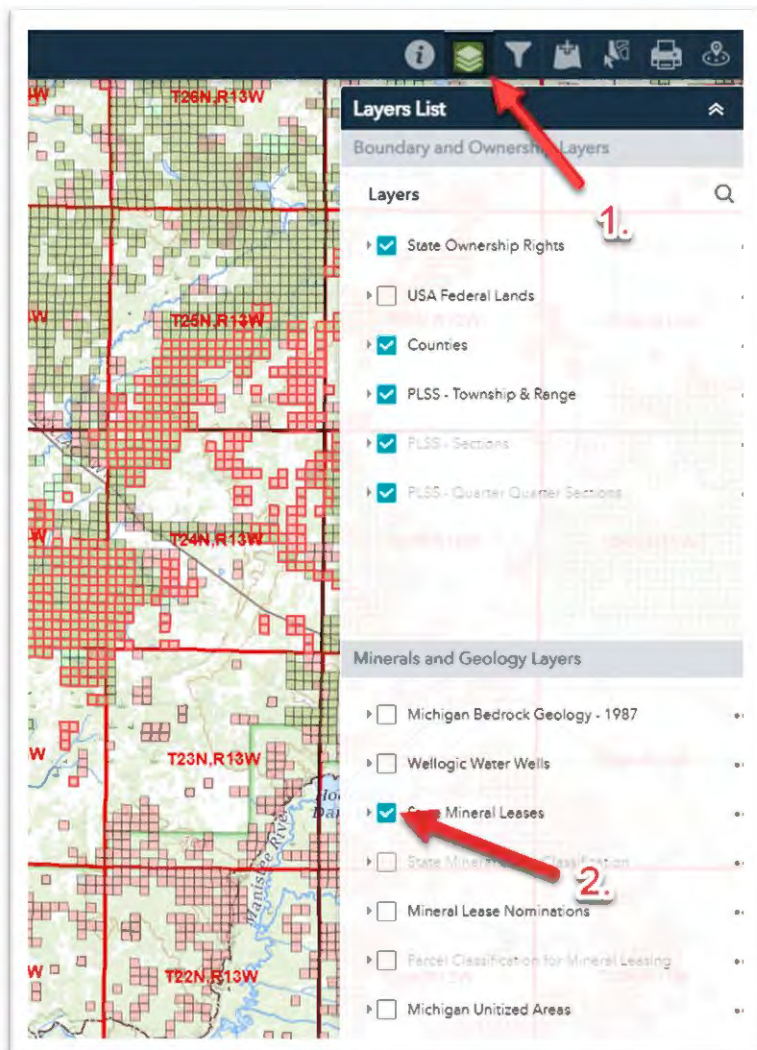


Accessing the Minerals Management Map

1. Visit: <https://www.michigan.gov/dnr/managing-resources/minerals>
2. Click on “[View the minerals management map](#)”



3. Choose the desired layers.

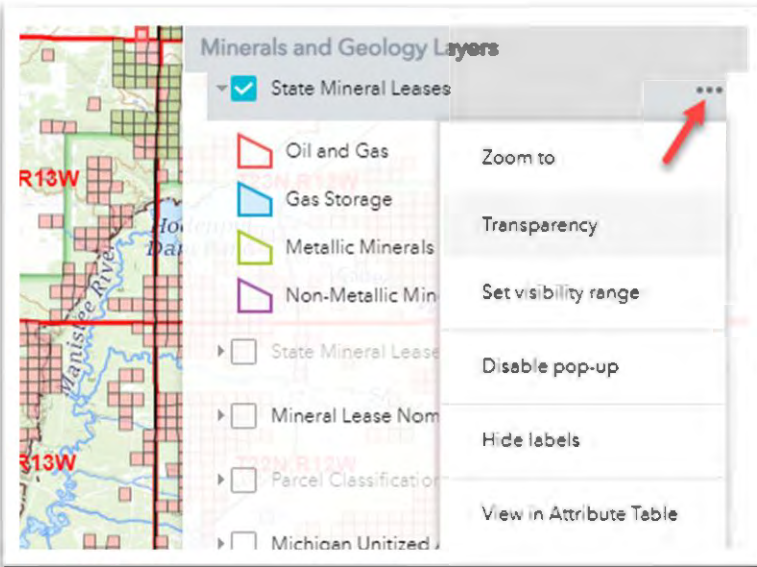


Useful Tips

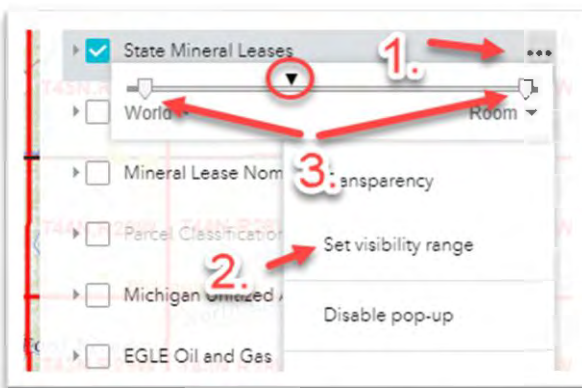
The carrot to the left of the layer will open the legend for that layer.



Additional features are available by clicking the dots here.



If you're not seeing the layer you chose, expand the visibility range outside of the circled pointer.



Using the Attribute Table

1. Click “View in Attribute Table” once you’ve opened the additional features list.



2. A table will open identifying the parcels associated with your desired layer.

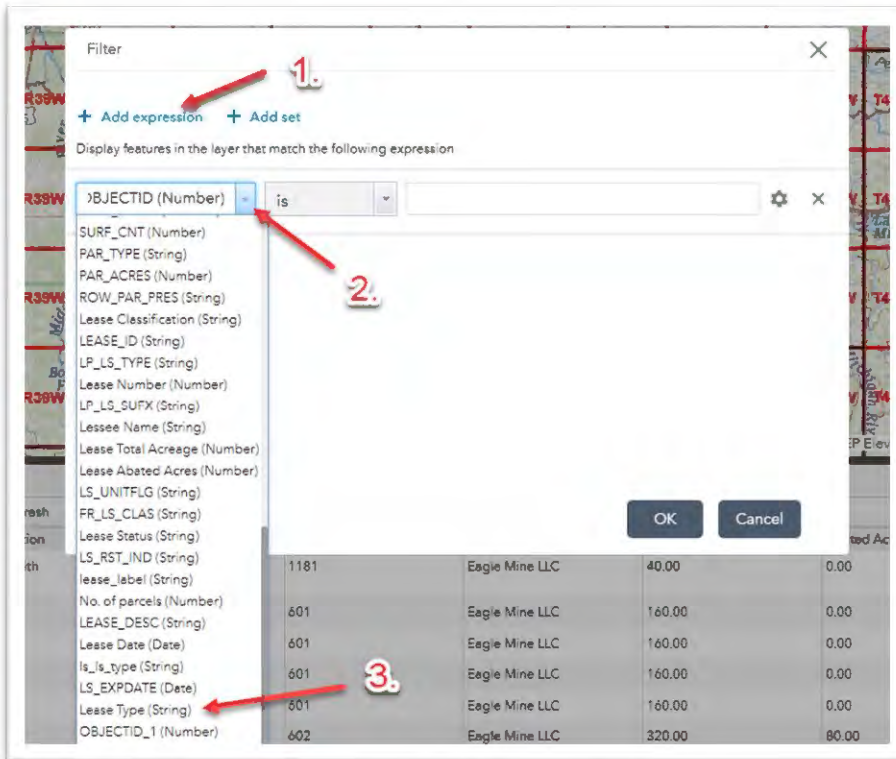
GEO_ID	Parcel ID	Lease Classification	Lease Type	Lease Number	Lessee Name	Total Acres	Abated Acreage	Lease Status	Lease Date
50N29W09E01	152327	Development with Restrictions	Metallic Minerals	1181	Eagle Mine LLC	40.00	0.00	A	12/27/2015
50N29W09N01	152333	Development	Metallic Minerals	601	Eagle Mine LLC	160.00	0.00	A	7/7/1992
50N29W09N02	152338	Development	Metallic Minerals	601	Eagle Mine LLC	160.00	0.00	A	7/7/1992
50N29W09N03	152335	Development	Metallic Minerals	601	Eagle Mine LLC	160.00	0.00	A	7/7/1992
50N29W09N04	152334	Development	Metallic Minerals	601	Eagle Mine LLC	160.00	0.00	A	7/7/1992

3. Further filters are available by clicking “Options” then “Filter”.

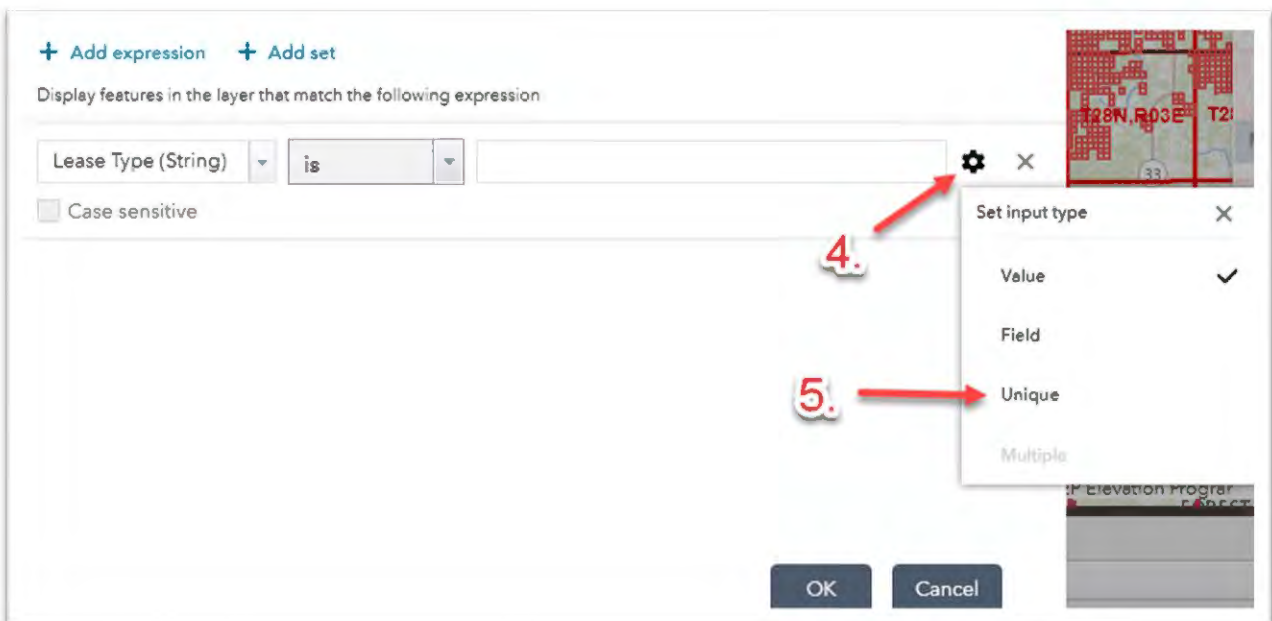
Parcel ID	Lease Classification
152327	Development with Restrictions
152333	Development
152338	Development
152335	Development
152334	Development

EXAMPLE: How to filter by “Lease Type” in the Attribute Table

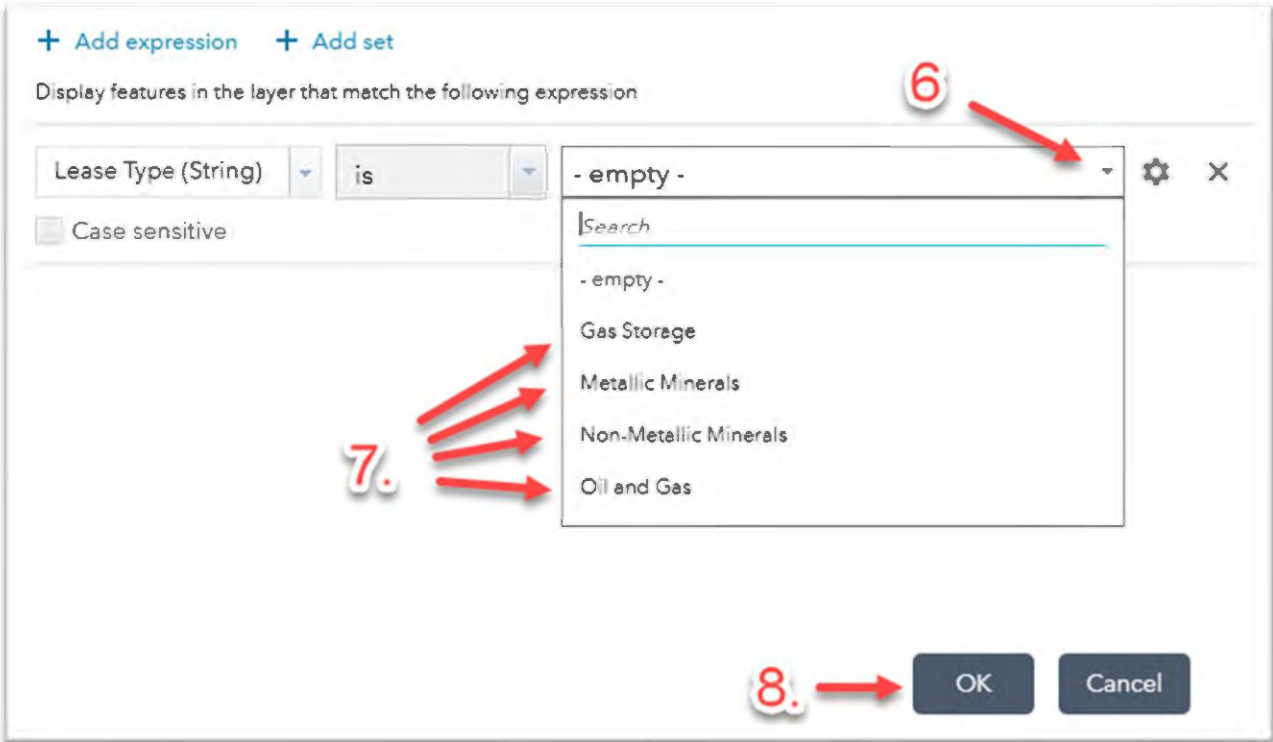
1. Click “Add expression”, dropdown, “Lease Type”.



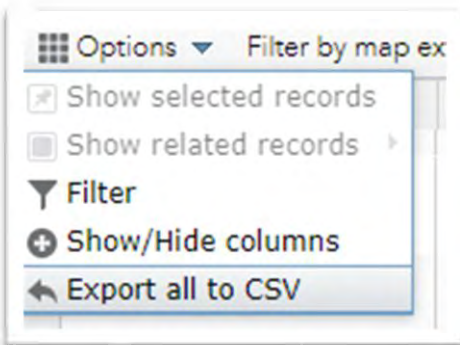
2. Click the tool icon, choose “Unique”.



3. Click dropdown, choose desired Lease Type, click "OK".



4. The map and table will update with the applicable information. You can download a spreadsheet of the filtered parcels by clicking "Options", "Export all to CSV", then choosing "OK" when the dialog box opens.



Please Note: This tutorial is intended as a brief introduction and does not include many of the features available. We suggest exploring the different layers and filtering options available to identify the specific information you may be interested in.