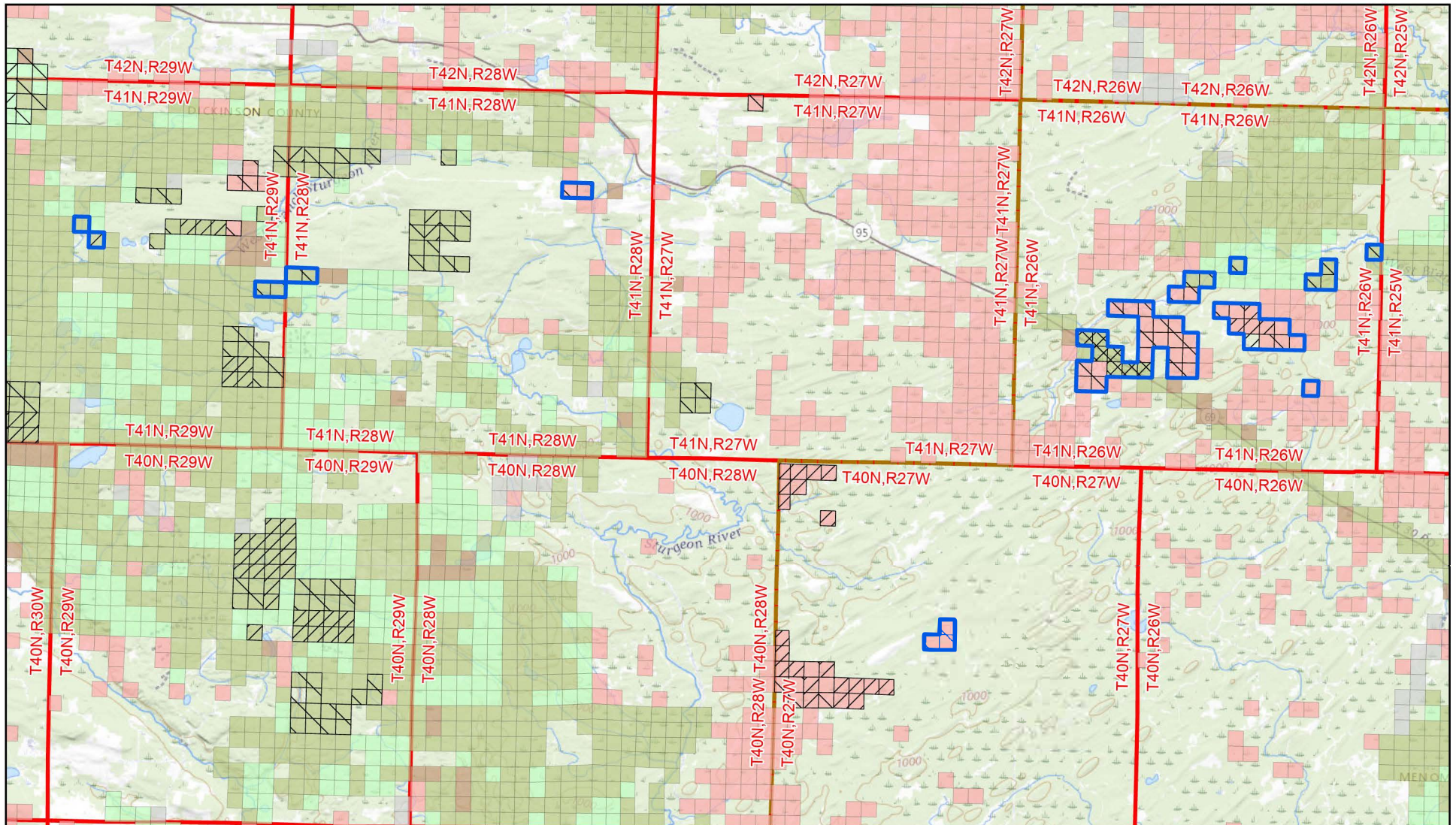


Proposed Non-competitive (Direct) Metallic Mineral Lease

Keweenaw Land Association

Nomination ID: 1734

County: Dickinson, Menominee



| | | | | |
|-----------------------------|-----|------------------------------------|-----------------|-------------------------|
| State Land Ownership | | Parcel Lease Classification | | Active Lease Nomination |
| Surface | LD | Township & Range | County Boundary | |
| Mineral and Surface | LDR | | | |
| Minerals | LND | | | |
| Mixed Ownership | NL | | | |
| Other Rights | | | | |

Coordinate System: NAD 1983 Michigan GeoRef Meters

Map created: 08/23/2023 8:22 AM

