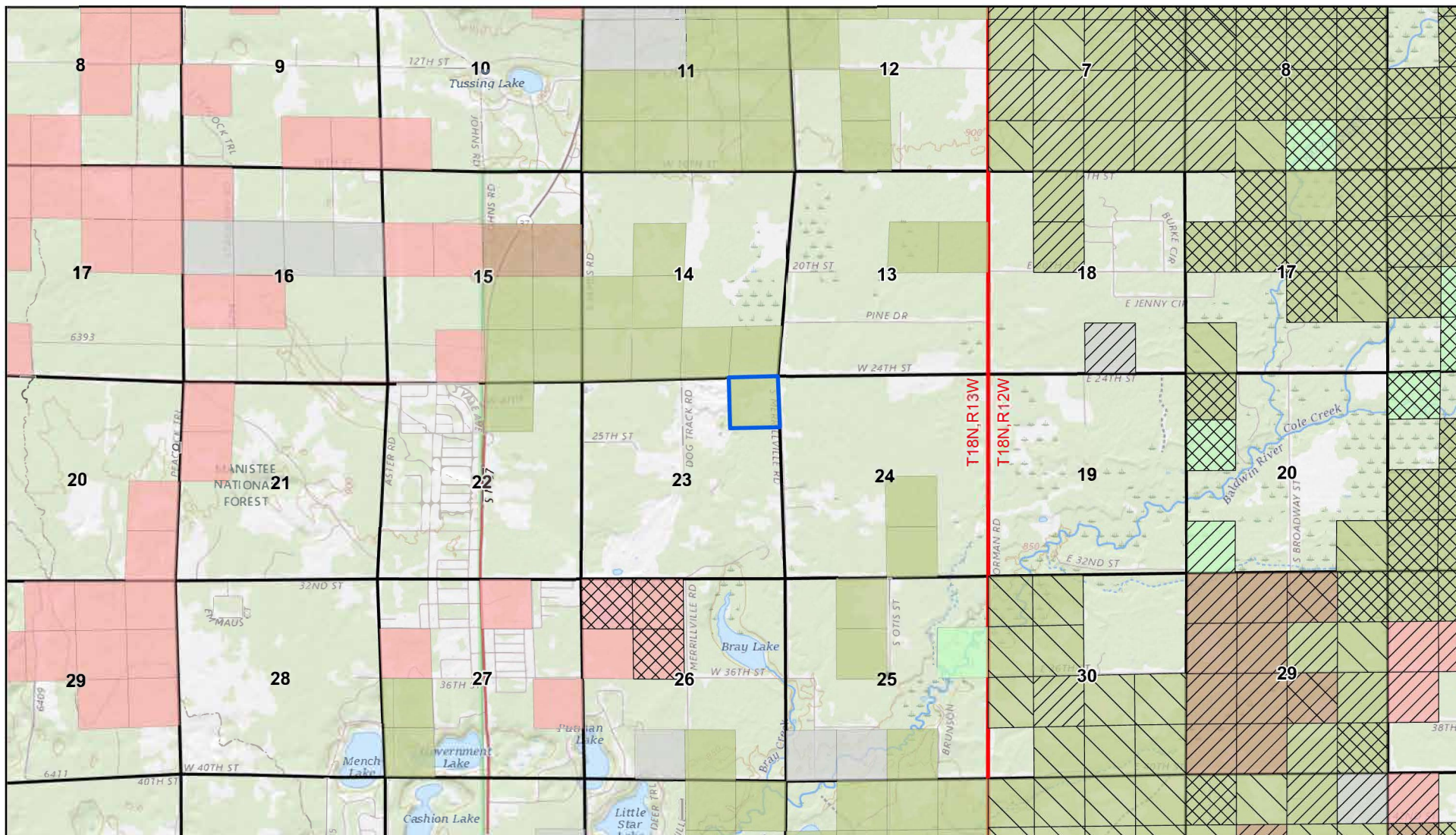


Proposed Nonmetallic Mineral Lease

Lake County Road Commission

Nomination ID: 1749

County: Lake



State Land Ownership Surface Mineral and Surface Minerals Mixed Ownership Other Rights		Parcel Lease Classification LD LDR LND NL		Active Lease Nomination Sections Township & Range County Boundary	
--	--	--	--	---	--

Coordinate System: NAD 1983 Michigan GeoRef Meters

Map created: 10/26/2023 2:14 PM

