

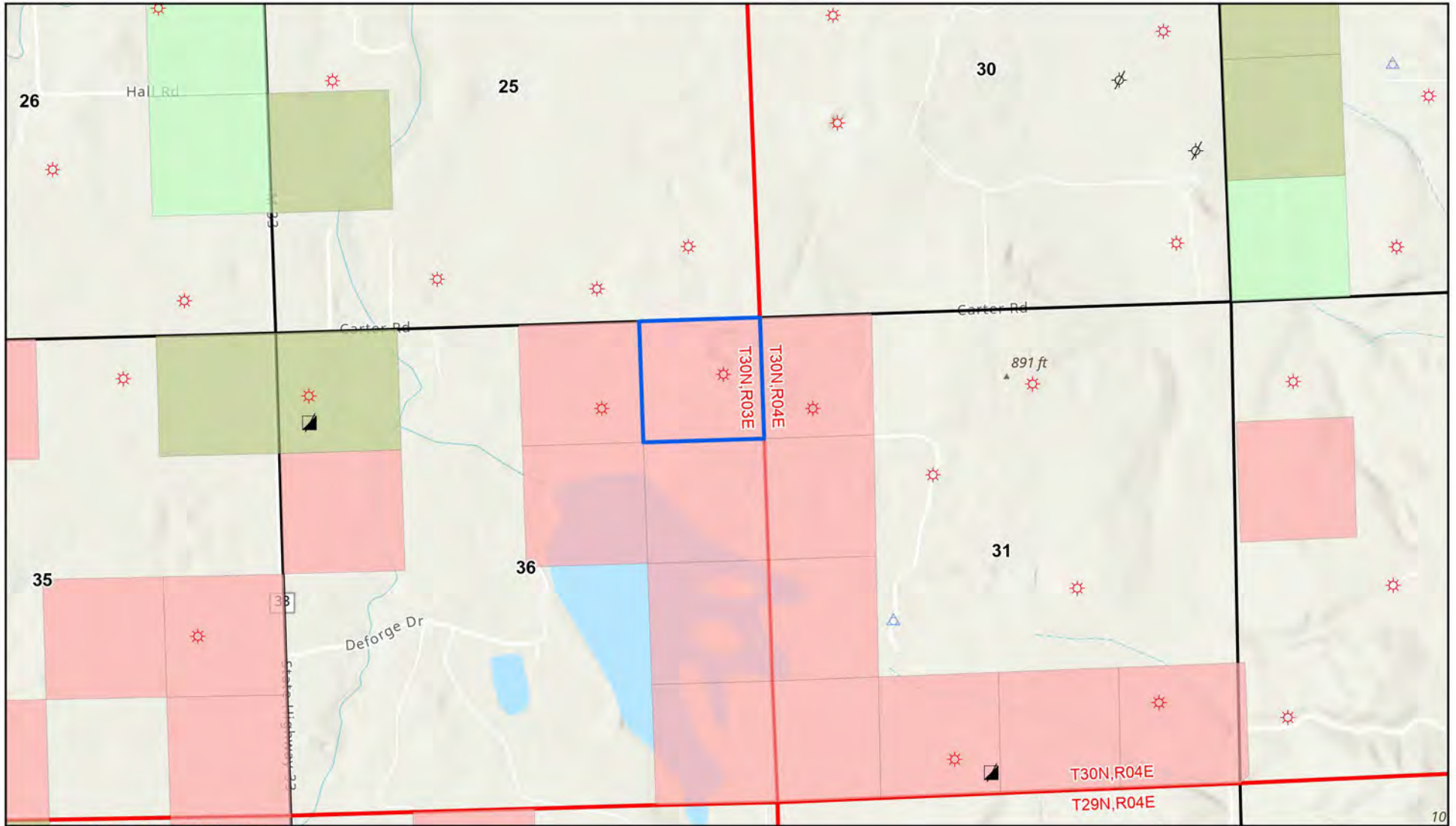


Proposed Nonmetallic Mineral Lease

Applicant: Oesch Excavating, LLC

Nomination ID: 1762

County: Montmorency



State Land Ownership	Active Lease Nomination	Permitted Well Locations	Plugged
Surface	Counties	Oil Wells	Directional Start Holes
Mineral and Surface	Township & Range	Natural Gas Wells	Slant
Minerals	Sections	Dry Holes	
Mixed Ownership		Brine Disposal Wells	
Other Rights		Mineral Wells	

Coordinate System: NAD 1983 Michigan GeoRef Meters

Map created: 06/06/2024 1:52 PM

Scale: 0 0.17 0.35 Miles

