

# 5 || MULTIMODAL AND PARKING ANALYSIS

## 5.1. DATA ANALYSIS OVERLAYS

Figures 5.1 through 5.4 show the results of analyses from overlaying maps with related but varying information. Vehicle circulation, walking, biking and parking evaluations are noted directly on the maps.

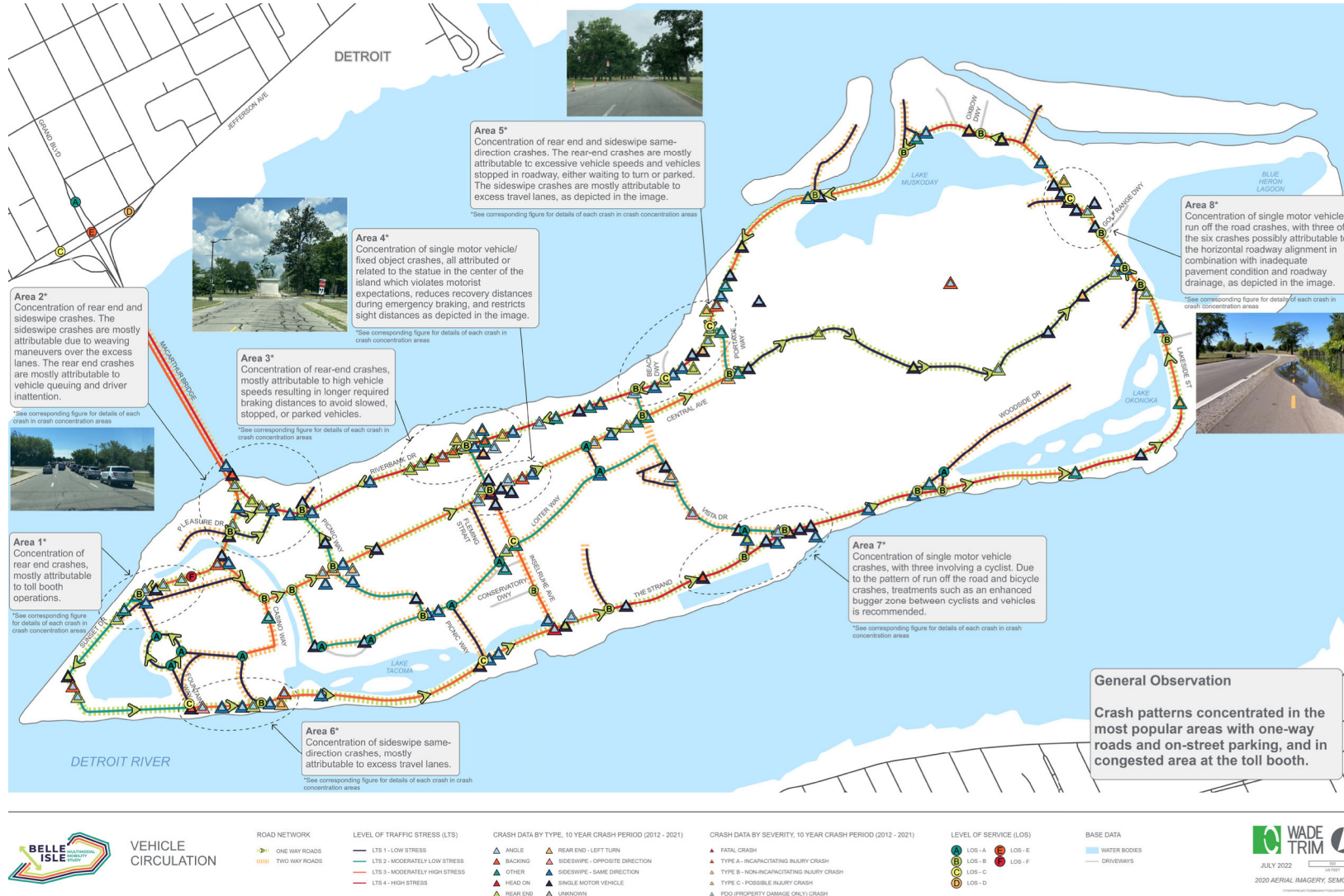
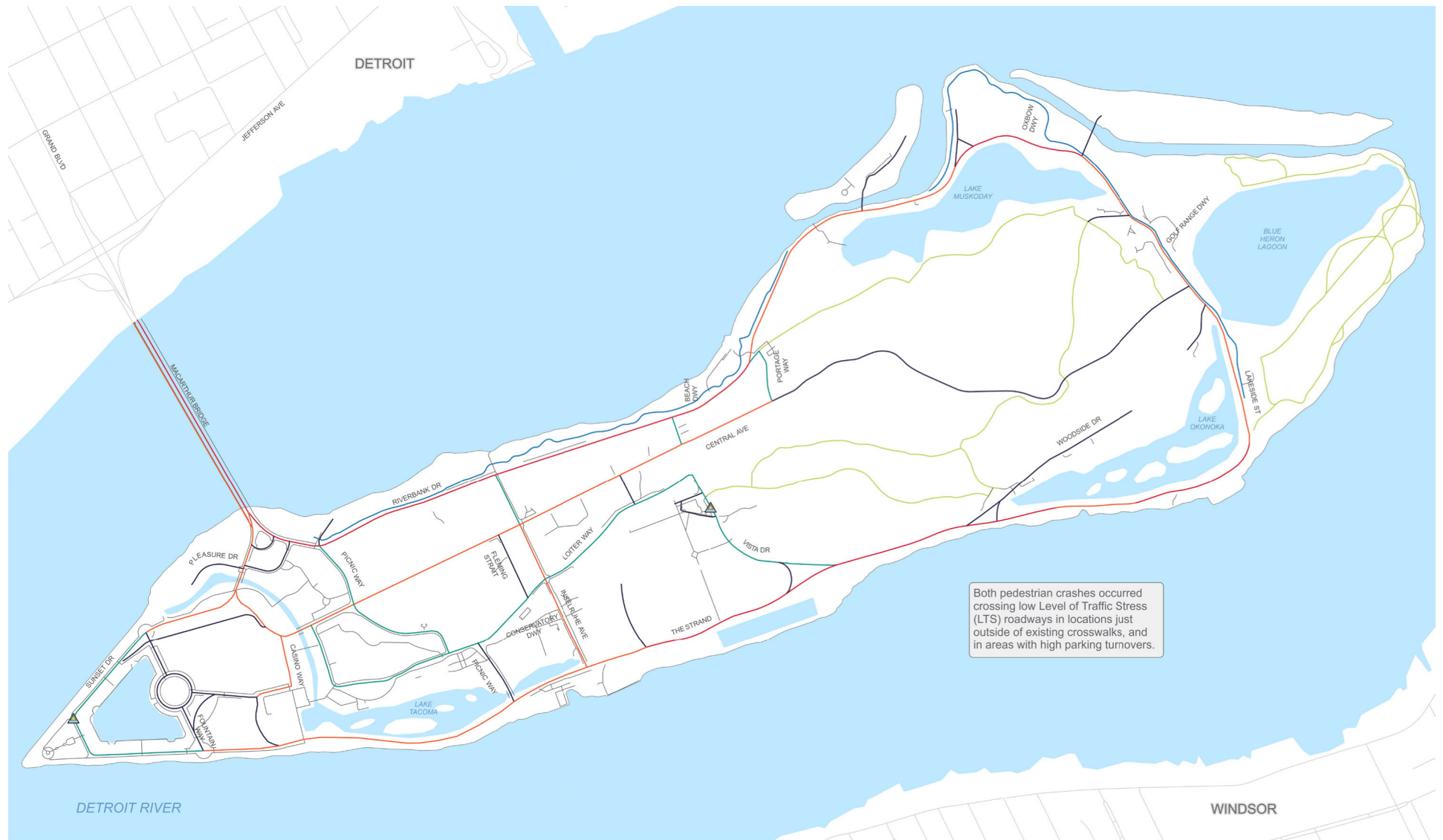


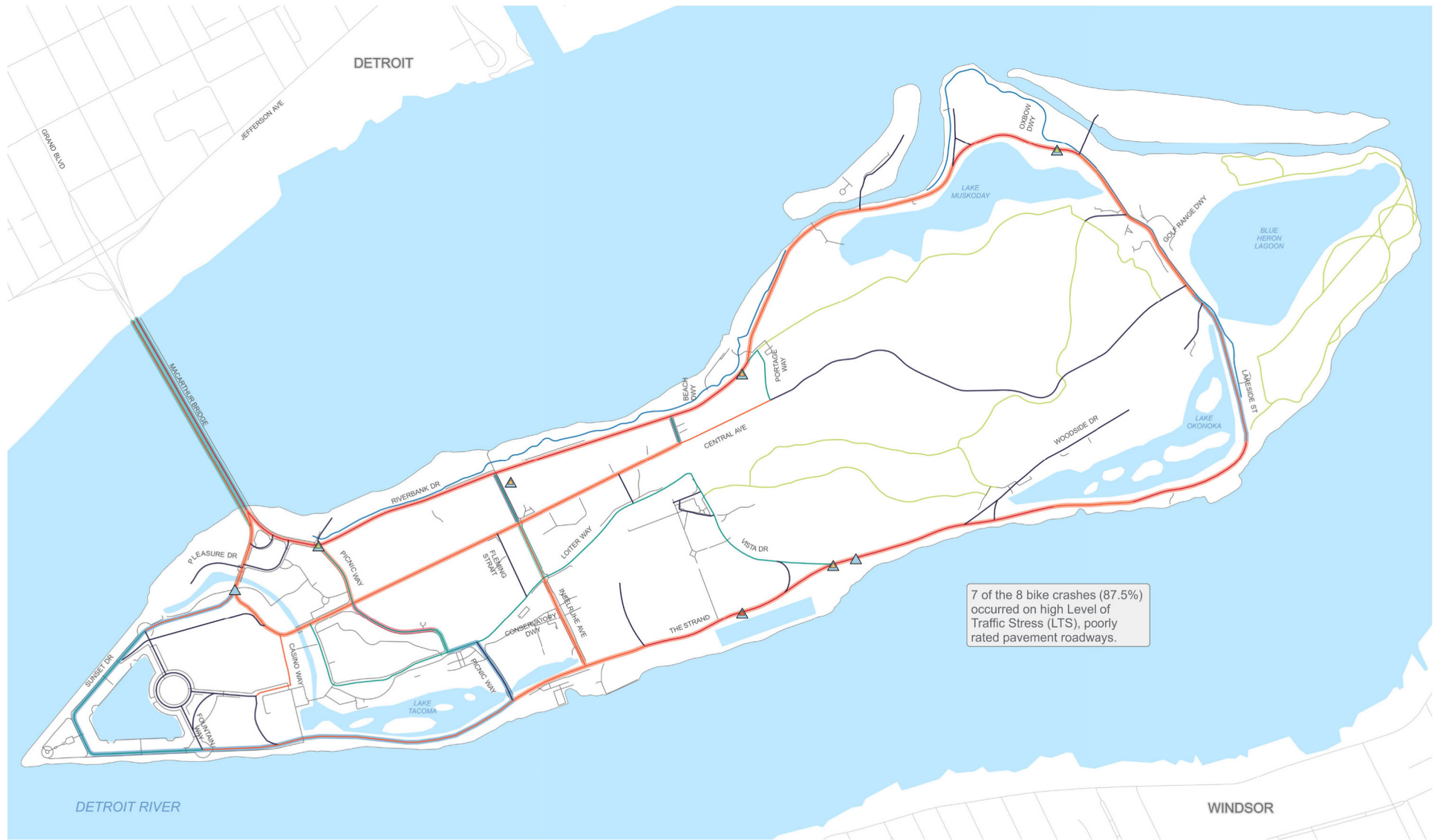
Figure 5.1 - Vehicular Circulation Analysis



	<b>PEDESTRIAN CIRCULATION</b>	<b>PEDESTRIAN NETWORK</b>	<b>LEVEL OF TRAFFIC STRESS (LTS)</b>	<b>CRASH DATA BY TYPE, 10 YEAR CRASH PERIOD (2012 - 2021)</b>	<b>CRASH DATA BY SEVERITY, 10 YEAR CRASH PERIOD (2012 - 2021)</b>	<b>BASE DATA</b>
		<ul style="list-style-type: none"> <li>— SIDEWALKS</li> <li>— MULTI-USE PATH</li> <li>— TRAILS</li> </ul>	<ul style="list-style-type: none"> <li>— LTS 1 - LOW STRESS</li> <li>— LTS 2 - MODERATELY LOW STRESS</li> <li>— LTS 3 - MODERATELY HIGH STRESS</li> <li>— LTS 4 - HIGH STRESS</li> </ul>	<ul style="list-style-type: none"> <li>▲ CRASH LOCATION INVOLVING A PEDESTRIAN</li> </ul>	<ul style="list-style-type: none"> <li>▲ FATAL CRASH</li> <li>▲ TYPE A - INCAPACITATING INJURY CRASH</li> <li>▲ TYPE B - NON-INCAPACITATING INJURY CRASH</li> <li>▲ TYPE C - POSSIBLE INJURY CRASH</li> </ul>	<ul style="list-style-type: none"> <li>■ WATER BODIES</li> </ul>

JULY 2022
 
  
 2020 AERIAL IMAGERY, SEMCOG

Figure 5.2 - Pedestrian Circulation Analysis



7 of the 8 bike crashes (87.5%) occurred on high Level of Traffic Stress (LTS), poorly rated pavement roadways.



**BICYCLE CIRCULATION**

- PEDESTRIAN NETWORK
- SIDEWALKS
  - MULTI-USE PATH
  - TRAILS

- LEVEL OF TRAFFIC STRESS (LTS)
- LTS 1 - LOW STRESS
  - LTS 2 - MODERATELY LOW STRESS
  - LTS 3 - MODERATELY HIGH STRESS
  - LTS 4 - HIGH STRESS

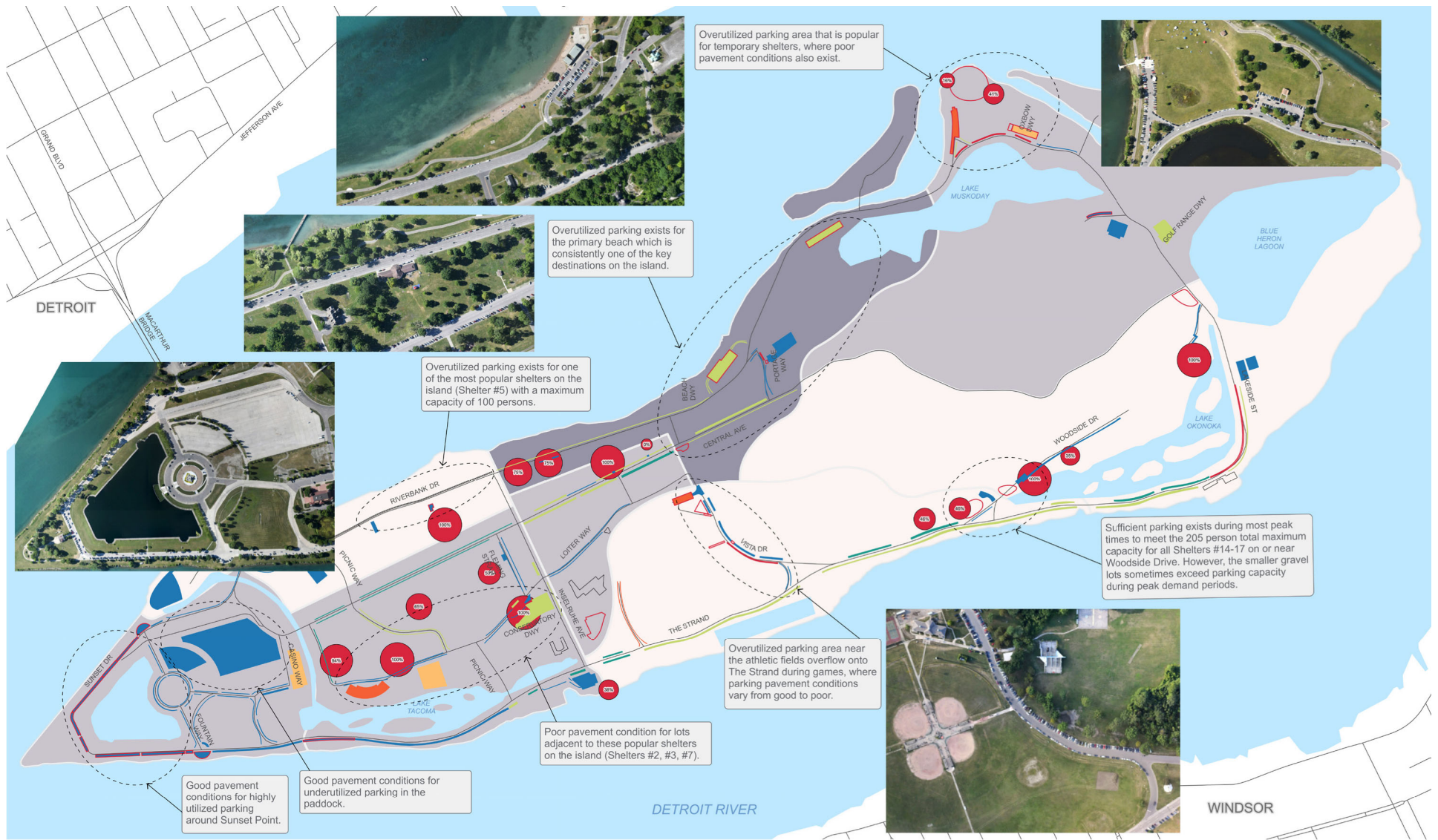
- CRASH DATA BY TYPE, 10 YEAR CRASH PERIOD (2012 - 2021)
- ▲ CRASH LOCATION INVOLVING A BICYCLE

- CRASH DATA BY SEVERITY, 10 YEAR CRASH PERIOD (2012 - 2021)
- ▲ FATAL CRASH
  - ▲ TYPE A - INCAPACITATING INJURY CRASH
  - ▲ TYPE B - NON INCAPACITATING INJURY CRASH

- PASER RATING
- 3 - POOR
  - 4 - FAIR
  - 5 - FAIR
  - 6 - GOOD
  - 8 - VERY GOOD
  - 9 - EXCELLENT

- BASE DATA
- WATER BODIES





**PARKING AND ATTENDANCE**



Figure 5.4 - Parking Circulation and Attendance Data Overlay

