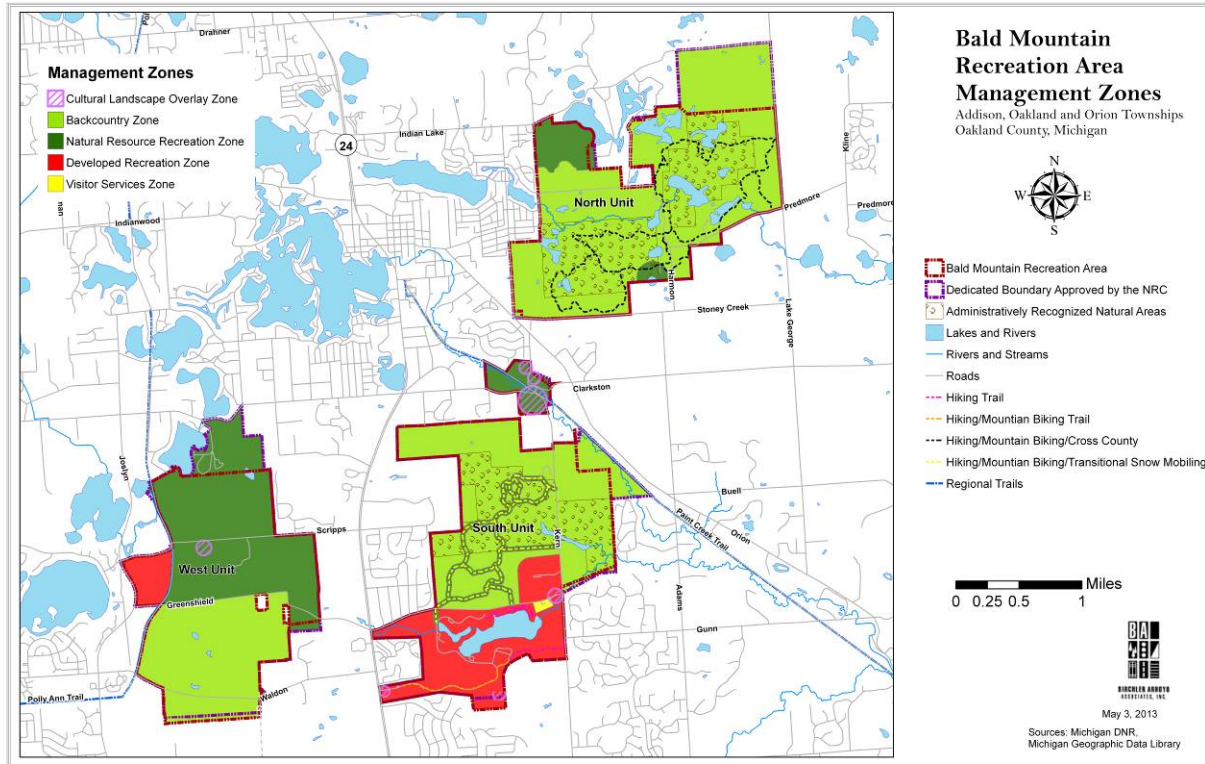


BALD MOUNTAIN RECREATION AREA – LONG-RANGE ACTION GOALS PLAN

PHASE 2 – LONG RANGE ACTION GOALS PLAN

Long-range management guidance focused on the specific natural resources, historic-cultural resources, recreation opportunities and the education-interpretation opportunities of...

Bald Mountain Recreation Area



PLAN APPROVALS:

[Signature]
Chief, Parks & Recreation Division

5/27/14
Date

[Signature]
Chief, Operations Section

5/20/14
Date

[Signature]
Chief, Planning Section

5-15-14
Date



BALD MOUNTAIN RECREATION AREA – LONG-RANGE ACTION GOALS PLAN

PLAN APPROVAL RECOMMENDATIONS:



Park Management Plan Administrator

3/25/14

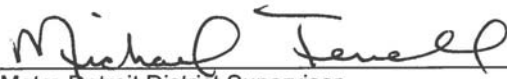
Date



Stewardship Unit Manager

4/2/14

Date



Metro Detroit District Supervisor

3/25/14

Date



Southeast Region Planner

4/1/14

Date



Park Manager, Bald Mountain Recreation Area

3-31-14

Date

FOR INFORMATION:

NRC – MICHIGAN STATE PARKS ADVISORY COMMITTEE:

4/10/14

Date

PRD – SECTION CHIEFS:

6/3/13 & 3/3/14

Date

RECEIVED

APR 07 2014

PARKS & RECREATION

BALD MOUNTAIN RECREATION AREA – LONG-RANGE ACTION GOALS PLAN

INTRODUCTION

A General Management Plan (GMP) develops as a result of a series of planning steps. Each step builds upon the previous, and action decisions focus on the mission of the Parks & Recreation Division (PRD), and the specific Purpose and Significance of the park. Phase I GMP is the first of four phases of planning. This document, Phase 2 Action Plan, is directed by the Phase 1 plan and identifies goals to be attained over the next ten years.

In this phase, the first action is to re-evaluate the General Management Plan to assure that no conditions have changed that would cause a change in the overall guiding document. Having recently adopted the General Management Plan for this recreation area in 2012, it stands as written.

The second phase of management planning for Bald Mountain Recreation Area (BMRA) establishes long-range action goals for each of the management zones defined in the General Management Plan. For each management zone in the plan, action goals are recommended that address the following categories:

- Natural Resources
- Historic/Cultural Resources
- Recreation Opportunities
- Education/Interpretation Opportunities
- Management Focus
- Development



BACKGROUND OF BALD MOUNTAIN AND OVERVIEW OF PHASE 1

Bald Mountain Recreation Area, with 4,637 acres spread across three separate units (North Unit, South Unit and West Unit), is located in Oakland County, Michigan. The Department of Natural Resources (DNR) Parks & Recreation Division completed the Phase I General Management Plan process for Bald Mountain Recreation Area in 2012. The endeavor represents a new planning philosophy of the PRD. Management Planning, a comprehensive, resource-based process is the PRD's adaptation of National Park Service planning methodology. Through the planning process, the Planning Team (made up of Natural Resource Department staff, government officials, stakeholders and the public) developed the Core Values for Bald Mountain Recreation Area. Bald Mountain Recreation Area was determined to be significant for the following reasons:

1. Bald Mountain Recreation Area is a 4,637-acre day-use recreation and fitness park for the Southeast Michigan population that offers visitors a variety of year-round recreational opportunities with land area appropriate for expanding these activities.

BALD MOUNTAIN RECREATION AREA – LONG-RANGE ACTION GOALS PLAN

2. Bald Mountain Recreation Area features year-round fishing and its two trout streams make it one of the few places in southeast Michigan that offers this unique trout fishing opportunity.
3. The park features a modern outdoor shooting range offering rifle, pistol, shotgun, and archery activities.
4. Bald Mountain Recreation Area, home to 3,000 acres of public hunting land, constitutes a significant public hunting resource within the State's most populated region.
5. There are 15 miles of marked, designated use trails within the park that also serve as a potential link between the Polly Ann and Paint Creek Trails. This interconnected regional trail system ties together surrounding communities including Orion Township, Oakland Township, Lake Orion and Auburn Hills.
6. The north unit of the park has an undeveloped and natural feel that provides visitors a glimpse of their natural heritage and the chance to get away from suburban life.
7. Bald Mountain includes significant historic resources, featuring some of the earliest known development in Southeast Michigan, including Rudd Mill, one of Orion Township's first sawmills, and the Decker Settlement, the first settlement in Orion Township.
8. Bald Mountain Recreation Area features diverse plant and animal life, and a wide variety of rare, exemplary or important natural species and habitats within the park. The terrain, wetlands, lakes, swamps, forests, prairie fens, flowers and plants allow for interaction with nature.
9. Current and future utility easements cross much of the park, which may limit recreational opportunities in some areas or provide opportunities in others.

Considering the identity and significance of Bald Mountain Recreation Area, the Planning Team, with stakeholder and public input, established appropriate Management Zones and the extent of influence on the property. From a palette of nine standard zones, five were applied to Bald Mountain Recreation Area. While the full descriptions of these zones are included in the Phase 1 document, a condensed review of the Management Zones follows:

- ❑ Backcountry Zone comprises 3,236 acres (63.8%) of the park and emphasizes resource quality over recreation, but allows for modification of the landscape to allow for moderate levels of active recreation uses. The Administratively Recognized Natural Areas within the recreation area are found in the Backcountry Zone. Much of Bald Mountain Recreation Area's extensive trail system is located in this management zone.
- ❑ Natural Resource Recreation Zone comprises 1,178 acres (23.2%) and allows active recreation with medium-high density of use conducted in a natural setting. There is still an emphasis on resource quality over recreation, but in this zone, higher levels of use are allowed. In Bald Mountain Recreation Area, this zone is mainly comprised of the rustic cabins in the North Unit, the Paint Creek Trail segment in the South Unit, and most of the West Unit north of Greenshield Road.

BALD MOUNTAIN RECREATION AREA – LONG-RANGE ACTION GOALS PLAN

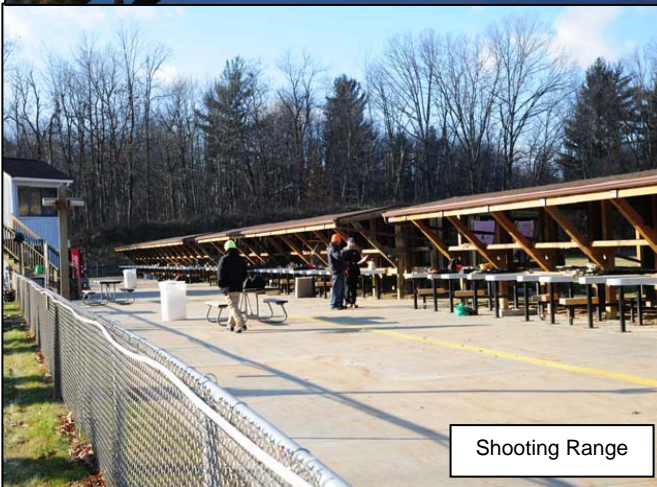
- ❑ Developed Recreation Zone comprises 653 acres (12.9%) and allows active recreation with high density of use conducted in areas not designated for natural resource significance. The Upper and Lower Trout Lake day use and beach areas, the shooting range, and the model airplane flying field are found within the Developed Recreation zone.
- ❑ Cultural Landscape Overlay Zone comprises 58 acres (1.1%) of Bald Mountain Recreation Area. In this overlay/zone, preservation of the historical and cultural resources is the primary management focus. The Cultural Landscape Overlay allows the uses in the underlying zone but addresses the cultural and historical resources found within the park. The Deckers Settlement and Rudd's Mill are two important historical features found within this zone.
- ❑ Visitor Services Zone comprises 7 acres (0.1%) and encompasses the developed areas required for program administration and operations. This zone will include the park headquarters, maintenance facilities and all related land required to conduct the business of running a state recreation area.



East Graham Lake



Morel Cabin in the North Unit

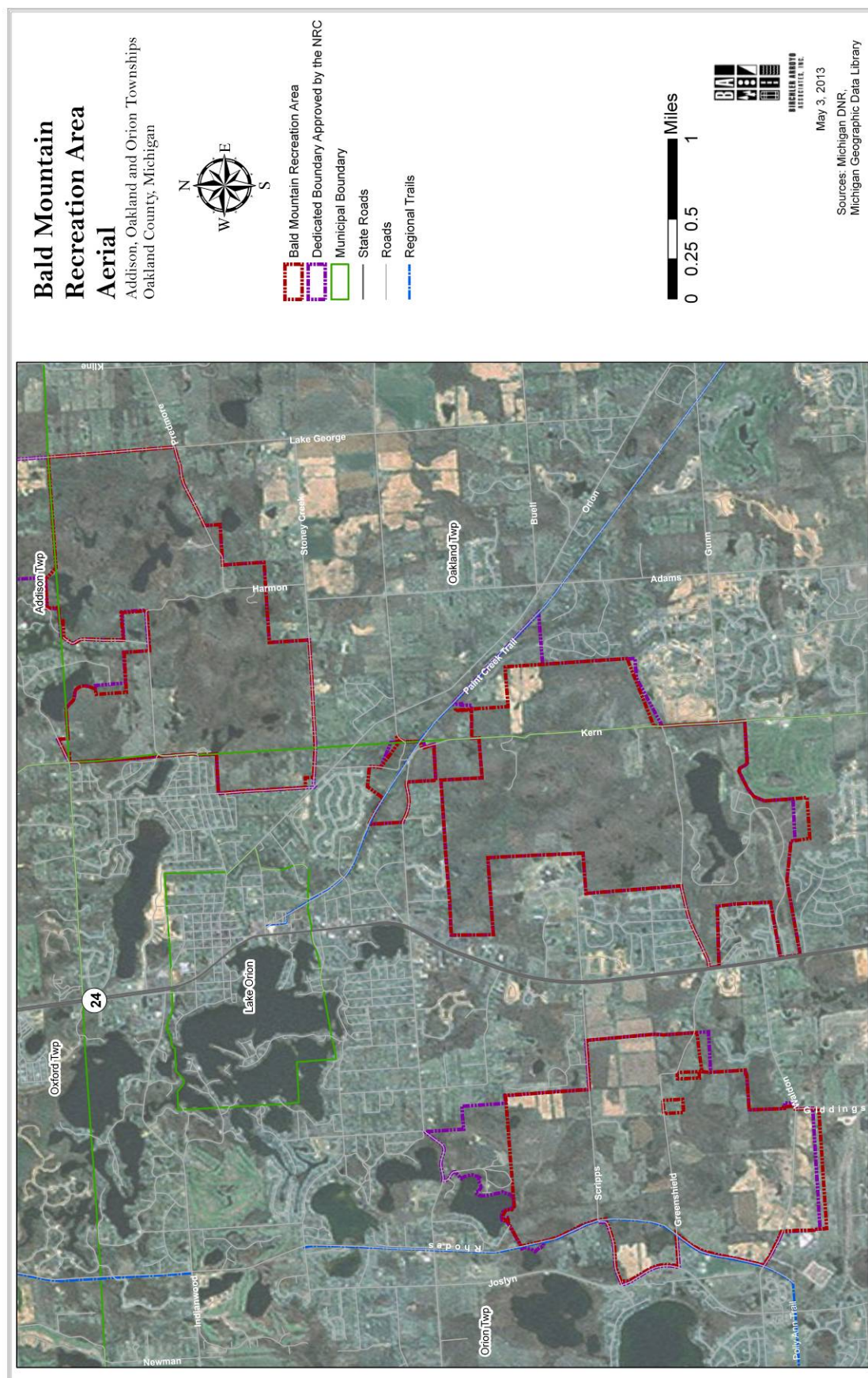


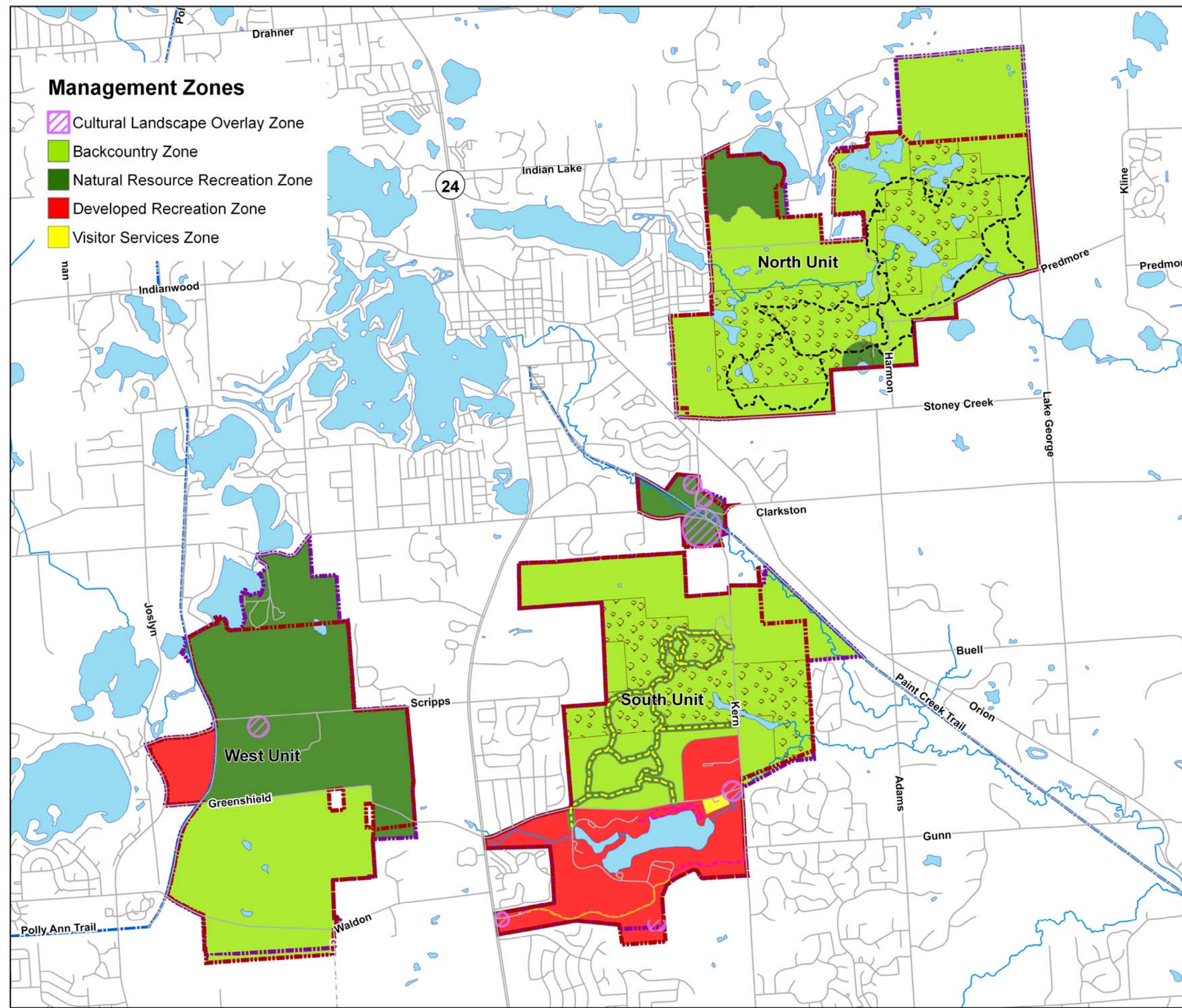
Shooting Range



Hearth Picnic Shelter

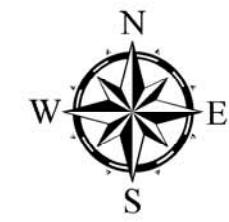
BALD MOUNTAIN RECREATION AREA – LONG-RANGE ACTION GOALS PLAN





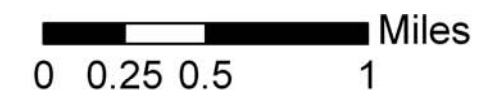
Bald Mountain Recreation Area Management Zones

Addison, Oakland and Orion Townships
Oakland County, Michigan



- Bald Mountain Recreation Area
- Dedicated Boundary Approved by the NRC
- Administratively Recognized Natural Areas
- Lakes and Rivers
- Rivers and Streams
- Roads
- Hiking Trail
- Hiking/Mountain Biking Trail
- Hiking/Mountain Biking/Cross County
- Hiking/Mountain Biking/Transitional Snow Mobiling
- Regional Trails

Note: The Dedicated Boundary Approved by the Natural Resources Commission (NRC) encompasses properties that are potential future land acquisitions as they become available and as funds become available.



May 3, 2013

Sources: Michigan DNR,
Michigan Geographic Data Library

(Intentionally Blank)

BALD MOUNTAIN RECREATION AREA – LONG-RANGE ACTION GOALS

Critical to the Management Planning process is the identification and delineation of “Management Zones”. These are physical sections within the Recreation Area that have defined characteristics and qualities, for which there are related user expectations, management guidance, and defined levels of development. Phase 1 of the General Management Plan for Bald Mountain developed the Management Zone Map. Phase 2 looks at each management zone and identifies 10-year Action Goals that the Planning Team believes are necessary to guide management and development within the zones in order to achieve the desired user experience.

General Action Goals (Applies to the whole park)

Many of the 10-Year Action Goals for Bald Mountain are general in nature and apply within all of the management zones. These often deal with park-wide issues, such as invasive species control, universal access, developing Stewardship, Wildfire and Emergency plans, or marketing the park’s many recreational opportunities to a wider audience of potential users. Many of the overall maintenance and operational issues of operating a state park also result in the need for actions across all zone boundaries, such as law enforcement.

Natural Resources

Action Goal	Target Completion Date	Program Input From	Responsible Program Position	Appropriate Zone(s)
1. Create a Stewardship Plan	3-5 Years	Stewardship, Clinton River Watershed Council, Park Manager	Stewardship Ecologist	All Applicable Zones
2. Implement Stewardship Plan for the park	On-going	Stewardship, Volunteers, Park Manager	Stewardship, Restoration Specialist	All Applicable Zones
3. Update Natural Features Inventory	On-going	Stewardship, and Volunteers	Stewardship	All Applicable Zones
4. Survey and manage the aquatic system within the recreation area to identify resources and assess opportunities	On-going	Fisheries and Stewardship	Fisheries and Stewardship	All Applicable Zones
5. Review survey of EMR* habitat and follow EMR management guidelines (in All Applicable Zones where CCAA** applies)	On-going	Stewardship, Wildlife, Park Manager	Stewardship, Park Manager	All Applicable Zones With EMR Habitat
6. Preserve the quality of the known exemplary natural communities	On-going	Stewardship, Wildlife, Park Manager	Stewardship	All Applicable Zones
7. Implement invasive species control (land and water)	On-going	Park Manager, Stewardship, Fisheries	Park Manager	All Applicable Zones

*Eastern Massasauga Rattlesnake; **Candidate Conservation Agreement with Assurances

BALD MOUNTAIN RECREATION AREA – LONG-RANGE ACTION GOALS PLAN

Historic/Cultural Resources				
Action Goal	Target Completion Date	Program Input From	Responsible Program Position	Appropriate Zone(s)
1. Complete the cultural resources survey of the park for interpretation, protection and preservation	5 years	Stewardship, SHPO	Cultural Resource Analyst	All Applicable Zones
2. Develop and conduct monitoring program for archeological resources	On-going	Park Manager and Stewardship	Cultural Resource Analyst and Office of State Archaeologist	All Applicable Zones
3. Protect archaeological/ cultural resources identified by inventory	On-going	Stewardship, SHPO, Regional Planner Park Manager	Cultural Resource Analyst and Park Manager	All Applicable Zones
4. Review all proposed earthwork activities for potential impact on historic/cultural resources	On-going	Regional Planner and Stewardship	Cultural Resource Analyst and Office of State Archaeologist	All Applicable Zones
Recreation Opportunities				
Action Goal	Target Completion Date	Program Input From	Responsible Program Position	Appropriate Zone(s)
1. Maintain park open to hunting	On-going	PRD and Wildlife Division	Park Manager	All Applicable Zones Where Hunting Permitted
2. Identify opportunities to improve connectivity within and beyond park boundaries/units and develop trail routes that support the mutual goals of PRD and the local partners	2 Years	Park Manager, Regional Planner, Local Recreation Partners	Regional Planner	All Applicable Zones
3. Identify and evaluate ecotourism opportunities	On-going	Park Manager, Marketing and Outreach, Recreation Programmer	Park Manager	All Applicable Zones
4. Coordinate BMRA programs with County and Local Recreation Partners activities	On-going	Park Manager, Marketing and Outreach, Recreation Programmer	Park Manager	All Applicable Zones
5. Develop ADA hunting opportunities	5 Years	Wildlife, Park Manager, Regional Planner	Park Manager	All Applicable Zones
6. Feasibility and needs study of hosting large recreational events	2 Years	Park Manager, Regional Planner, Recreation Programmer	Park Manager	All Applicable Zones
7. Identify opportunities for overnight accommodations	5 Years	Park Manager	Park Manager	All Applicable Zones

BALD MOUNTAIN RECREATION AREA – LONG-RANGE ACTION GOALS PLAN

Education/Interpretation Opportunities				
Action Goal	Target Completion Date	Program Input From	Responsible Program Position	Appropriate Zone(s)
1. Develop specific interpretation and education opportunities	On-going	Park Manager, Stewardship, Marketing and Outreach	Marketing and Outreach	All Applicable Zones
2. Coordinate BMRA programs with County and Local Recreation Partners activities	On-going	Park Manager, Marketing and Outreach, Recreation Programmer	Park Manager	All Applicable Zones
3. Utilize variety of traditional and new media, including audio and visual technologies, podcasts, and other emerging technologies for interpretation	On-going	Park Manager, Marketing and Outreach	Park Manager, Marketing and Outreach	All Applicable Zones
4. Develop interpretive message for Eastern Massasauga Rattlesnake	5 Years	Park Manager, Marketing and Outreach	Park Manager, Marketing and Outreach	All Applicable Zones
5. Develop/install kiosks and displays appropriate to the zones	5 Years	Park Manager, Marketing and Outreach	Park Manager	All Applicable Zones
Management Focus				
Action Goal	Target Completion Date	Program Input From	Responsible Program Position	Appropriate Zone(s)
1. Land acquisition within NRC Dedicated Boundary	On-going	Park Manager, Lands Manager, Stewardship	Lands Manager	All Applicable Zones
2. Wildfire Plan and Emergency Plan	Completed With Annual Update	Park Manager and Stewardship	Park Manager	All Applicable Zones
3. Explore and develop revenue generating opportunities that are sustainable	On-going	Park Manager, Marketing and Outreach	Park Manager	All Applicable Zones
4. Dedicate staffing and budget resources to address goals (including partnerships and volunteers as appropriate)	On-going	Park Manager, District Supervisor	Park Manager, District Supervisor	All Applicable Zones
5. Promote volunteer partnerships to meet resource goals	On-going	Stewardship Volunteer Coordinator and Park Manager	Park Manager	All Applicable Zones
6. Develop a marketing plan for this park	5 Years	Park Manager, Recreation Programmer, Marketing and Outreach	Park Manager	All Applicable Zones
7. Establish a co-management agreement between PRD and Marketing & Outreach for the shooting range	(Lease expires in 2029)	PRD Management, Marketing and Outreach, Regional Planner, Park Manager	Park Manager	All Applicable Zones

BALD MOUNTAIN RECREATION AREA – LONG-RANGE ACTION GOALS PLAN

8. Review all concession contracts	On-going Annually	Park Manager, Contracts and Lease Coordinator	Park Manager	All Applicable Zones
9. Address user conflicts	On-going	Park Manager, Regional Planner	Park Manager	All Applicable Zones
10. Conduct parking assessment to improve parking/access within BMRA	2 Years	Park Manager and Regional Planner	Park Manager	All Applicable Zones
11. Evaluate and assess the role BMRA can play as a connector in the equestrian trail network and recommend long and short-range actions	2 Years	Park Manager, Stewardship, User Groups, and Regional Planner	Park Manager	All Applicable Zones
12. Identify and secure appropriate physical connection between units.	On-going	Park Manager, Stewardship, Regional Planner	Park Manager	All Applicable Zones

Development

Action Goal	Target Completion Date	Program Input From	Responsible Program Position	Appropriate Zone(s)
1. Implement parking assessment to improve parking/access within BMRA	2 Years	Park Manager and Regional Planner	Park Manager	All Applicable Zones
2. Implement equestrian trail connection recommendations	10 Years	Park Manager, User Groups, and Regional Planner	Park Manager	All Applicable Zones
3. Restore and/or re-route unsustainable segments of trails	5 Years	Park Manager Stewardship, User Groups, Regional Planner	Park Manager	All Applicable Zones

BALD MOUNTAIN RECREATION AREA – LONG-RANGE ACTION GOALS PLAN

Backcountry Zone

The character of the Backcountry zone is intended to be natural, with minimal evidence of human impact. A large portion of the Backcountry Zone at Bald Mountain, especially the North Unit, contains ecologically sensitive areas and supports a variety of rare, exemplary or important natural species and habitats. Most of the park's trail use occurs in this zone and needs to be managed to ensure the natural resources are protected and the natural feel is maintained. Tolerance for natural resource impacts is low in the Backcountry zone and is reflected in the 10-year Action Goals for this zone.

Natural Resources

Action Goal	Target Completion Date	Program Input From	Responsible Program Position
1. See General Action Goals			

Historic/Cultural Resources in Backcountry Zone

Action Goal	Target Completion Date	Program Input From	Responsible Program Position
1. See General Action Goals			

Recreation Opportunities

Action Goal	Target Completion Date	Program Input From	Responsible Program Position
1. Maintain and enhance opportunities for birding hunting/fishing/gathering/trapping	On-going	Stewardship, Wildlife, Park Manager	Stewardship and Park Manager
2. Conduct study of trail connection either from Conklin Road or Stoney Creek Road to the North Unit's hiking/biking/cross country ski trail network	1-2 Years	Regional Planner, Park Manager, Road Commission, Orion Township	Regional Planner, Park Manager

Education/Interpretation Opportunities

Action Goal	Target Completion Date	Program Input From	Responsible Program Position
1. See General Action Goals			

Management Focus

Action Goal	Target Completion Date	Program Input From	Responsible Program Position
1. See General Action Goals			

Development

Action Goal	Target Completion Date	Program Input From	Responsible Program Position
1. Upgrade and/or re-route trails to accommodate use compatible with natural character of zone	On-going	Park Manager, Recreation Partners, Stewardship, User Groups, Regional Planner	Park Manager, Regional Planner
2. Develop additional parking and an entrance feature for the North Unit	10 Years	Regional Planner, Stewardship, Park Manager	Park Manager, Regional Planner
3. Develop improved trailheads in North Unit	On-going	Park Manager, Stewardship, Regional Planner	Park Manager, Regional Planner

BALD MOUNTAIN RECREATION AREA – LONG-RANGE ACTION GOALS PLAN

Natural Resource Recreation Zone

Active recreation, at medium to high density of use, conducted in a natural setting is the hallmark of the Natural Resource Recreation zone. There is still an emphasis on resource quality over recreation, but in this zone, higher levels of use are allowed. Vegetation may be managed to facilitate recreational use and maintaining an aesthetically appealing landscape, as well as to address such things as hazard trees, and to manage pests and disease. The 10-year Action Goals are intended to promote moderate to high levels of diverse recreation opportunities compatible with natural character of the zone.

Natural Resources

Action Goal	Target Completion Date	Program Input From	Responsible Program Position
1. Implement the specific recommendations from the Stewardship Plan	On-going	Stewardship, Park Manager, Wildlife	Park Manager

Historic/Cultural Resources

Action Goal	Target Completion Date	Program Input From	Responsible Program Position
1. See General Action Goals			

Recreation Opportunities

Action Goal	Target Completion Date	Program Input From	Responsible Program Position
1. Relocate snowmobile area to West Unit north of Greenshield Road	10 Years	Park Manager, Regional Planner	Regional Planner
2. Maintain and enhance opportunities for hunting/fishing/gathering/trapping, bird watching, trail use and camping	On-going	Stewardship, Wildlife, Park Manager	Park Manager
3. Explore acquisition of Boy Scout Camp, evaluate infrastructure and opportunities and appropriate zone designation	10 Years	Park Manager, Stewardship, Regional Planner	Regional Planner

Education/Interpretation Opportunities

Action Goal	Target Completion Date	Program Input From	Responsible Program Position
1. See General Action Goals			

Management Focus

Action Goal	Target Completion Date	Program Input From	Responsible Program Position
1. Develop strategy for reducing vandalism at the Rudd Mill site	1 Year	Park Manager, Law Enforcement, Friends of Paint Creek Trail and Trailway Commission, Local Recreation Partners	Park Manager
2. Convert agricultural fields to habitat or ecological restoration per Stewardship Plan	10 Years	Park Manager, Stewardship, Wildlife	Park Manager

Development

Action Goal	Target Completion Date	Program Input From	Responsible Program Position
1. Develop parking for relocated snowmobile area in West Unit	10 Years	Park Manager, Regional Planner	Regional Planner

BALD MOUNTAIN RECREATION AREA – LONG-RANGE ACTION GOALS PLAN

Developed Recreation Zone

Active recreation with high density of use, conducted in areas not designated for natural resource significance, is characteristic of the Developed Recreation Zone. In this zone, recreation dominates with natural resource attributes enhanced where possible. Bald Mountain's primary day-use areas, swimming beaches, shooting range and model airplane field are located in the Developed Recreation Zone. The 10-year Action Goals direct management decisions and development projects designed to promote and support these diverse visitor activities.

Natural Resources

Action Goal	Target Completion Date	Program Input From	Responsible Program Position
1. See General Action Goals			

Historic/Cultural Resources

Action Goal	Target Completion Date	Program Input From	Responsible Program Position
1. Continue to explore feasibility of restoration and repurposing of the Gunnar Birkerts designed buildings	1 Year	Park Manager, Stewardship, SHPO, Marketing & Outreach	Park Manager

Recreation Opportunities

Action Goal	Target Completion Date	Program Input From	Responsible Program Position
1. Develop a feasibility study to evaluate needs and best use for day use area (the Developed Recreation Zone of the South Unit)	5 Years	Park Manager, Regional Planner	Regional Planner
2. Develop an engineering feasibility study of the Trout Lakes system and dams	5 Years	Park Manager, Regional Planner, Fisheries	Regional Planner

Education/Interpretation Opportunities

Action Goal	Target Completion Date	Program Input From	Responsible Program Position
1. See General Action Goals			

Management Focus

Action Goal	Target Completion Date	Program Input From	Responsible Program Position
1. Program and market events and activities designed to increase visitor attendance	On-going	Park Manager, Marketing & Outreach	Park Manager

Development

Action Goal	Target Completion Date	Program Input From	Responsible Program Position
1. Repurpose, replace, or remove the Gunnar Birkerts designed buildings	5 Years	Park Manager, Cultural Analyst, Regional Planner, SHPO	Park Manager
2. Implement the accepted recommendations of the historic resources, day use, and Trout Lake dams feasibility studies	10 Years	Park Manager, Regional Planner, Fisheries	Park Manager

BALD MOUNTAIN RECREATION AREA – LONG-RANGE ACTION GOALS PLAN

<u>Visitor Service Zone</u>			
This zone encompasses the developed areas required for program administration and operations. It includes the headquarters offices and maintenance facilities with the associated land required to conduct the business of running Bald Mountain Recreation Area.			
Natural Resources			
Action Goal	Target Completion Date	Program Input From	Responsible Program Position
1. See General Action Goal			
Historic/Cultural Resources in Visitor Service Zone			
Action Goal	Target Completion Date	Program Input From	Responsible Program Position
1. See General Action Goals			
Recreation Opportunities			
Action Goal	Target Completion Date	Program Input From	Responsible Program Position
1. See General Action Goals			
Education/Interpretation Opportunities			
Action Goal	Target Completion Date	Program Input From	Responsible Program Position
1. See General Action Goals			
Management Focus			
Action Goal	Target Completion Date	Program Input From	Responsible Program Position
1. Develop a management plan for interpretation and programming	3 Years	Marketing & Outreach, Stewardship, Park Manager	Marketing & Outreach
Development			
Action Goal	Target Completion Date	Program Input From	Responsible Program Position
1. Relocate and increase the size of the visitor parking lot and make it more universally accessible	2 Years	Regional Planner, Park Manager	Park Manager
2. Upgrade the aesthetic appearance of the headquarters and visitor accommodations	On-going	Regional Planner, Park Manager	Park Manager

<u>Cultural Landscape Overlay Zone</u>			
The Cultural Landscape Overlay zone addresses the overall setting in which is found not only historic structures, but also non-structural evidence of the traditions, beliefs, practices, life ways, arts, crafts and social institutions of any community. Examples at Bald Mountain include Rudd's Mill and the Decker Settlement.			
Action Goal	Target Completion Date	Program Input From	Responsible Program Position
1. Follow underlying zone recommendations and/or general recommendations for all action goals in this zone.			

Appendix A –Summary of Public Input

Public Participation

The Department of Natural Resources Parks & Recreation Division (DNR-PRD) emphasizes that comments on the general management plans are accepted at any time during the process. Two structured approaches to gathering public input are included in the general management plan process. Additionally, an on-site park user questionnaire was employed to solicit public input. The participation initiatives are summarized below, and the results are presented in this Appendix.

❑ December 20, 2012 Stakeholder and Recreation Partner Workshop

The purpose of the workshop was to obtain comments on the draft Long-Range Action Goals Plan for Bald Mountain Recreation Area. With assistance from the Planning Team, approximately 50 people and/or organizations were identified as stakeholders. Invitations to the Stakeholder Workshop were sent by email and via post. Approximately 15 people attended the workshop.

There were three opportunities to provide comments:

- 1) Sticky Note Prioritization Activity – use sticky dots to identify action steps that they would like the DNR to prioritize
- 2) Additional Comments Sheet – provide additional comments/recommendations
- 3) Group Discussion – share ideas with other stakeholders in a group setting

❑ March 18, 2013 Public Input Open House

A public input open house was held to allow the public the opportunity to express their comments about the park. The above noted people were again contacted regarding the public input workshops by mail and email. A notice was published in the local paper. Stakeholders and others were encouraged to share this information with interested members of the general public. Approximately 30 people attended.

There were two opportunities to provide comments:

- 1) Sticky Note Prioritization Activity – see above
- 2) Additional Comments Sheet – see above

☐ July 8, 2013 through August 10, 2013 Park User Questionnaire

In order to extend the public outreach to a wider cross-section of park users, an on-site questionnaire was conducted at Bald Mountain Recreation Area. Between July 8 and August 10, 2013, park staff asked visitors five questions about their visit to the park. A total of 191 responses were collected at various times throughout the day and throughout the week. Although the data gathered captured a wide demographic, it reflects summer use only and accounts for approximately 0.6% of all visitors to the park between the July 8 and August 10 timeframe. The questionnaire results helped to confirm the Action Goals developed for the park and provided additional information for park management staff.

DNR Stakeholder/Recreation Partner Workshop

Bald Mountain Recreation Area



For more information, or to RSVP, please contact
Susie Roble at
sroble@birchlerarroyo.com
or 248.423.1776 x 15

DNR Stakeholder/Recreation Partner Workshop Review and Discussion of Phase 2 Draft General Management Plan

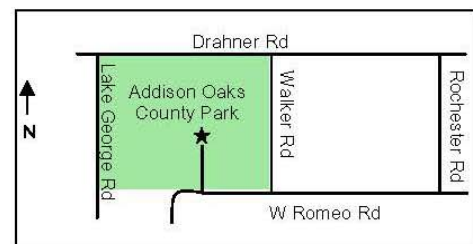
The Department of Natural Resources is in the process of developing Phase 2 of a General Management Plan for Bald Mountain Recreation Area. Phase 1 of this plan outlined 20-year goals in the form of Management Zones, which guide the DNR in the management of park resources and the visitor experience. Phase 2 identifies action strategies for the park generally and within the specific zones.

You and/or your group have been identified as a stakeholder or recreation partner, with active interests in this park. Using a workshop format, the DNR will share its proposed 10-year action goals for the recreation area. You or an alternate representative are invited to join us and share your ideas and recommendations with the Planning Team.

Due to space limitations of our meeting location, we ask that each stakeholder or recreation partner group limit itself to not more than 2 representatives. There will be a Public Input Open House in January or February of 2013 where everyone is welcome!

**Thursday, December 20, 2012
6:00 p.m. to 8:00 p.m.**

Addison Oaks Conference Center (The Buhl Estate)
The Garden Room
1480 W. Romeo Road
Leonard, MI 48367



DEPARTMENT OF NATURAL RESOURCES
Phase 2 Stakeholder/Recreation Partner Workshop
Bald Mountain Recreation Area
December 20, 2012
Addison Oaks Conference Center

1. **Introductions at 6:00 p.m.**
2. **Dave Birchler Gave a Brief Presentation of Management Planning Process and Status**
 - Review Phase 1 Management Zone Maps
 - Action Goal Development – Draft 10-year strategies to address Management Zone Map
 - Bald Mountain Planning Team Draft Action Goals organized by:
 - General Action Goals
 - Backcountry Zone
 - Natural Resource Recreation Zone
 - Developed Recreation Zone
 - Visitor Service Zone
 - Cultural Landscape Overlay
 - Priority Exercise explained
 - Action Goals input sheets described
 - Questions and Answers
3. **Open House – see below for results of Action Goals activity**
 - You are invited to visit each of the stations and talk to Planning Team members
 - Color dots are available for you to identify your priority actions (please limit yourself to 10 dots)
 - Action Goal input sheets are available for you to contribute additional suggested actions goals
4. **Reconvene at 7:40 p.m.**
 - Incorporate ‘hub’ concept to the plan as a way to improve funding due to connections; Oakland County Parks is using this same term
 - There are excellent active recreation programs in the local area; the DNR should provide more passive, large tract, open area recreation opportunities via BMRA
 - The DNR should leverage partnerships with recreation partners in order to better market the park
 - Acquisitions are very important! There is not enough park land compared to the population density of the region; purchase additional land before it becomes unavailable
 - Offer classes in navigating trail system and orienteering
 - Oakland Twp Parks and Rec is already doing this and would love to partner with BMRA on providing more educational and interpretive programs; there's not a good understanding of what's at BMRA due to low level of education/interpretation within the park
 - More acquisitions are critical for additional trail connection; consider acquiring Broad property to link with Paint Creek trail (Ray commented that recent state legislation makes it difficult to solicit private property owners)

- What about the nautilus buildings? SHPO has come up with potential re-use options for these buildings
 - The structures detract from the beach area; they are an eye sore; but she loves the big sign off of Lapeer Road
- Many people no longer use the beach because of weeds. Access to parking lot is confusing due to barrier posts.
- The lack of physical connection among the three units is very confusing to people
- Are there plans for additional camping? The DNR will be looking at various locations for overnight accommodation
 - Addison Oaks already provides excellent overnight accommodation facilities; the goal is not to duplicate but to complement these facilities
- Someone asked about the Boy Scouts Camp? There is a possibility that the DNR will acquire the land where the Boy Scouts Camp is located (if it is not sold for gravel mining)
- Moving snowmobiling to the west unit is a good idea.
- Has study been done of who is presently using BMRA (hunters, birders, bikers, hikers); work with local university to collect data at no cost
- Does state ever lease property to gain access for trails and connections – eligible for grant funding.

5. Adjournment at 8:00 p.m.

BALD MOUNTAIN RECREATION AREA – DRAFT LONG-RANGE ACTION GOALS

Bald Mountain Draft Action Goal	Target Date
Natural Resources	
1. Create a Stewardship Plan 3	3-5 Years
2. Implement Stewardship Plan for the park 3	On-going
3. Implement the specific provisions of the Biodiversity Stewardship Plan (BSP) 4	On Hold
4. Update Natural Features Inventory 2	On-going
5. Survey and manage the aquatic system within the recreation area to identify resources and assess opportunities 2	On-going
6. Review survey of Eastern Massasauga Rattlesnake habitat and follow EMR management guidelines (in All Applicable Zones where Candidate Conservation Agreement w/Assurances applies) 2	On-going
7. Preserve the quality of the known exemplary natural communities 4	On-going
8. Implement invasive species control (land and water) 8	On-going
Historic/Cultural Resources	
1. Complete the cultural resources survey of the park for interpretation, protection and preservation 5	5 Years
2. Develop and conduct monitoring program for archeological resources 0	On-going
3. Protect archaeological/cultural resources identified by inventory 2	On-going
4. Review all proposed earthwork activities for potential impact on historic/cultural resources 0	On-going
Recreation Opportunities	
1. Maintain park open to hunting 9	On-going
2. Identify opportunities to improve connectivity within and beyond park boundaries/units and develop trail routes that support the mutual goals of PRD and the local partners 9	2 Years
3. Identify and evaluate ecotourism opportunities 2	On-going
4. Coordinate Recreation Area programs with County and Local Recreation Partners activities 6	On-going
5. Develop ADA hunting opportunities 2	5 Years
6. Feasibility and needs study of hosting large recreational events 4	2 Years
7. Identify opportunities for overnight accommodation 4	5 Years
Education Opportunities	
1. Develop specific interpretation and education opportunities 3	On-going
2. Coordinate Recreation Area programs with County and Local Recreation Partners activities 5	On-going
3. Utilize variety of old and new media, including audio and visual technologies, podcasts, and other emerging technologies for interpretation 2	On-going
4. Develop interpretive message for Eastern Massasauga Rattlesnake 3	5 Years
5. Develop/install kiosks and displays appropriate to the zone 1	5 Years
Management Focus	
1. Land acquisition within dedicated boundary 7	On-going
2. Wildfire Plan and Emergency Plan 0	Completed With Annual Update
3. Explore and develop revenue generating opportunities that are sustainable 1	On-going
4. Dedicate staffing and budget resources to address goals (including partnerships and volunteers as appropriate) 2	On-going
5. Promote volunteer partnerships to meet resource goals 3	On-going
6. Develop a marketing plan for this park 4	5 Years
7. Establish a co-management agreement between PRD and Marketing & Outreach for the shooting range 0	(Lease expires in 2029)
8. Review all concession contracts 0	On-going Annually
9. Address user conflicts 2	On-going
10. Conduct parking assessment to improve parking/access within BMRA 0	2 Years
11. Evaluate/assess EQ trail and facility needs 9	2 Years
12. Identify and secure appropriate physical connection between units 9	On-going
Development	
1. Implement parking assessment to improve parking/access within BMRA 1	2 Years
2. Implement EQ trail recommendations 7	10 Years
3. Restore and/or re-route unsustainable segments of trails 3	5 Years

Backcountry Zone	
Draft Action Goal	Target Date
Natural Resources in Backcountry Zone	
1. See General Action Goals	
Historic/Cultural Resources in Backcountry Zone	
1. See General Action Goals	
Recreation Opportunities in Backcountry Zone	
1. Maintain and enhance opportunities for birding hunting/fishing/gathering/trapping 3	On-going
Education Opportunities in Backcountry Zone	
1. See General Action Goals	
Management Focus in Backcountry Zone	
1. See General Action Goals	
Development in Backcountry Zone	
1. Upgrade and/or re-route trails to accommodate use compatible with natural character of zone 3	On-going
2. Develop additional parking and an entrance feature for the North Unit	10 Years
3. Develop improved trailheads in North Unit	On-going

Natural Resource Recreation Zone	
Draft Action Goal	Target Date
Natural Resources in Natural Resource Recreation Zone	
1. Implement the specific recommendations from the Stewardship Plan 1	On-going
Historic/Cultural Resources in Natural Resource Recreation Zone	
1. See General Action Goals	
Recreation Opportunities in Natural Resource Recreation Zone	
1. Relocate snowmobile area to West Unit north of Greenshield Road	10 Years
2. Maintain and enhance opportunities for hunting/fishing/gathering/trapping, bird watching, trail use and camping 5	On-going
3. Upon acquisition of Boy Scout Camp, evaluate infrastructure and opportunities and appropriate zone designation 3	10 Years
Education Opportunities in Natural Resource Recreation Zone	
1. See General Action Goals	
Management Focus in Natural Resource Recreation Zone	
1. Develop strategy for reducing vandalism at the Rudd Mill site 4	1 Year
2. Convert agricultural fields to habitat or ecological restoration per Stewardship Plan 1	10 Years
Development in Natural Resource Recreation Zone	
1. Develop parking for relocated snowmobile area in West Unit	10 Years

Developed Recreation Zone	
Draft Action Goal	Target Date
Natural Resources in Developed Recreation Zone	
1. See General Action Goals	
Historic/Cultural Resources in Developed Recreation Zone	
1. Continue to explore feasibility of restoration and repurposing of nautilus buildings 4	1 Year
Recreation Opportunities in Developed Recreation Zone	
1. Develop a feasibility study to evaluate needs and best use for day use area (the Developed Recreation Zone of the South Unit) 2	5 Years
2. Develop an engineering feasibility study of the Trout Lakes system and dams 1	5 Years
Education Opportunities in Developed Recreation Zone	
1. See General Action Goals	
Management in Developed Recreation Zone	
1. Program and market events and activities designed to increase visitor attendance 4	On-going
Development in Developed Recreation Zone	
1. Repurpose, replace, or remove the nautilus buildings 2	5 Years
2. Implement the accepted recommendations of the feasibility studies	10 Years

Visitor Services Zone	
Draft Action Goal	Target Date
Natural Resources in Visitor Service Zone	
1. See General Action Goals	
Historic/Cultural Resources in Visitor Service Zone	
1. See General Action Goals 4	
Recreation Opportunities in Visitor Service Zone	
1. See General Action Goals	
Education Opportunities in Visitor Service Zone	
1. See General Action Goals 1	
Management Focus in Visitor Service Zone	
1. Develop a management plan for interpretation and programming 3	3 Years
Development in Visitor Service Zone	
Relocate and increase the size of the visitor parking lot and make it more universally accessible 3	2 Years
2. Upgrade the aesthetic appearance of the headquarters and visitor accommodations 3	On-going

Cultural Landscape Overlay Zone	
Draft Action Goal	
Natural Resources in Cultural Landscape Overlay Zone	
1. Follow underlying zone recommendations and/or general recommendations	
Historic/Cultural Resources in Cultural Landscape Overlay Zone	
1. Follow underlying zone recommendations and/or general recommendations 2	
Recreation Opportunities in Cultural Landscape Overlay Zone	
1. Follow underlying zone recommendations and/or general recommendations 1	
Education Opportunities in Cultural Landscape Overlay Zone	
1. Follow underlying zone recommendations and/or general recommendations 1	
Management Focus in Cultural Landscape Overlay Zone	
1. Follow underlying zone recommendations and/or general recommendations 1	
Development in Cultural Landscape Overlay Zone	
1. Follow underlying zone recommendations and/or general recommendations	

ALD MOUNTAIN RECREATION AREA 10-YEAR ACTION GOALS

ADDITIONAL ACTION GOALS TO CONSIDER:

Action Goal	Management Zone
Make connection between Polly Ann and Paint Creek Trails a priority! Keep it multi-use! The governor's new initiative for Michigan trail from Detroit to Wisconsin and the UP makes BMRA and Addison Oaks key crossroads in this system. Camping B & B's, etc. which will support this trail system locally and contribute to local economy.	ALL
Park entry should reflect park experience (ex: LEED)	
Hunting areas should be looked at in a comprehensive way coordinating with connected land holders	
Sign explaining what/where my park entry fee goes to	
I know it's on the agenda but an important part of BMRA is connecting multi-use trails to other parks. Please do not put this at the bottom of the 10-year goal.	
Connect BMRA North Unit to Conklin Rd by formalizing/officially opening the currently existing path between the trail and Conklin Rd. (email steve@nuxx.net if you would like GIS data of this route.) This will go very far towards connecting North Unit to the Paint Creek Trail.	Backcountry

Welcome – Please Sign In!

DNR Stakeholder/Recreation Partner Workshop
Bald Mountain Recreation Area
December 20, 2012

Name	Affiliation	Address	Phone #	Email Address
Jim Keglavit	Oakland Co. Planning	2100 Portage Ct Waterford 48328	248-538-5447	keglavit2j@earthlink.net
Steve Vigneau	Clinton River Area Mountain Bike Club	49107 Philadelphia Ct Shelby Twp., MI 48315	586-524-1675	steve@nuxx.net
Steve Fredericks	Oakland County Neighbor	65 Lake George Oakland, MI	248-693-6688	Fred65kg@MSN.com
Bill Stark	Retired Manager Oakland Twp Conservation	1010 E. Clarkston, W. 11312 455 S. Rochester Rd. Oakland Twp.	248-648-8139 576-752-7318	starkb@comcast.net
ROGER SCHMIDT				
JERRY REIS	CRCK	916 HIGHLAND CIRCLE	248-421-3445	INFO@CCMOTORSPORTS.COM
LAURA MCGRATH	ADDISON OAKS TRAIL RIDERS	2365 DRAHNER OAKS 48370	248-628-6594	imbecma@yahoo.com
Chris Barnett	Orion Twp Sports	2525 Jolly Rd. Orion 48360	248-391-0304 x201	cbarnett@oriontownship.org
Melinda Milo S-Dale	Oakland Twp Park & Rec	4393 Collins Road Rochester, MI 48306	248-4431-9950	mdale@oaklandtownship.org
Ken Gutelius	Skyrasters	726 Fairledge Lake Orion, MI 48362	248-844-1157	kennan@skyra.com
Barbara Barber	Historic Preservation	1395 E. Snell 48346	586-703-3923	Schwilbab@aol.com
Lobby Dwyer	ADDISON OAKS TRAIL RIDERS	1234 CAKE CREEK OAKLAND 48363	248-693-1212	stubby1234@comcast.net
Debbie Jensen	DNR / PRD	Steven T. Mason Lansing		Jensen@dmichigan.gov
PAUL CURTIS	DNR / PRD			
Lisa Gomez	DNR / PRD			Gomez@dmichigan.gov

Public invited to March 18 open house to discuss next phase of management plan for Bald Mountain Recreation Area

Contact: Debbie Jensen, 517-335-4832 or [Ed Golder](#), 517-335-3014

Agency: Natural Resources

Feb. 26, 2013

The Department of Natural Resources today announced it will hold an open house on Monday, March 18, inviting the public to provide input on the proposed Phase 2 Long Range Action Goals Plan for [Bald Mountain Recreation Area](#) in Oakland County. The open house will run from 6 to 8 p.m. at the Orion Center, located at 1335 Joslyn Road, in Lake Orion.

Bald Mountain Recreation Area provides more than 4,600 acres of public recreational property in Northeast Oakland County. The park is home to diverse natural and cultural resources and supports nine examples of exemplary natural communities, including four significant prairie fens. It includes 11 lakes and two designated trout streams and hosts a broad spectrum of recreation opportunities. Over 3,000 acres of the park are open for hunting, and the park includes a modern shooting range. Other recreation options include rustic cabins, fishing, hunting and trapping, birding and more than 15 miles of trails for hiking and mountain bike use. The park adjoins the Paint Creek and Polly Ann linear trails.

DNR Parks and Recreation Division Chief Ron Olson said the open house will provide an important opportunity for the public to review and comment on specific long-range actions that are recommended for this park.

Birchler Arroyo Associates, the DNR's planning consultant, will host the open house. DNR staff will be available to participate in presenting an overview of the planning process and to address questions about the park and planning efforts already under way.

For more information about this open house or the proposed plan, or assistance for persons needing accommodations to attend this open house, contact Debbie Jensen, DNR park management plan administrator, at 517-335-4832 (TTY/TDD711 Michigan Relay Center for the hearing impaired) at least five business days before the open house.

The Recreation Passport is an easy, affordable way for residents to enjoy and support outdoor recreation opportunities in Michigan. By checking "YES" for the \$11 Recreation Passport (\$5 for motorcycles) when renewing a license plate through the Secretary of State (by mail, kiosk, online at www.expresssos.com or at branch offices), Michigan motorists get access to state parks, recreation areas, state forest campgrounds, nonmotorized state trailhead parking and state boat launches. In addition, Recreation Passport holders can enjoy real savings at businesses and retailers that participate in the Passport Perks discount program. The Recreation Passport is valid until the next license plate renewal date. Nonresidents can purchase the Recreation Passport (\$30.50 annual; \$8.40 daily) at any state park or recreation area or through the Michigan e-Store at www.michigan.gov/estore.

Learn more about this creative way of sustaining Michigan's outdoor recreation and natural resources at www.michigan.gov/recreationpassport. For information on Passport Perks shopping discounts or how businesses and retailers can enroll in the program, visit www.michigan.gov/passportperks.

The Michigan Department of Natural Resources is committed to the conservation, protection, management, use and enjoyment of the state's natural and cultural resources for current and future generations. For more information, go to www.michigan.gov/dnr.

DNR Public Input Open House Bald Mountain Recreation Area



For more information, or to
RSVP, please contact
Susie Roble at
sroble@birchlerarroyo.com
or 248.423.1776 x 15

DNR Public Input Open House Review and Discussion of Phase 2 Draft General Management Plan

The Department of Natural Resources is in the process of developing Phase 2 of a General Management Plan for Bald Mountain Recreation Area. Phase 1 of this plan outlined 20-year goals in the form of Management Zones, which guide the DNR in the management of park resources and the visitor experience. Phase 2 identifies action strategies for the park generally and within the specific zones.

Using an open house format, the DNR will share its proposed 10-year action goals for the recreation area. You are invited to join us and share your ideas and recommendations with the Planning Team.

This meeting is open to the public so please spread the word!

Monday, March 18, 2013

6:00 p.m. to 8:00 p.m.

The Orion Center
1335 Joslyn Rd
Lake Orion, MI 48360

The Orion Center is located south of Clarkston Rd. and east of Orion Oaks Park.

DEPARTMENT OF NATURAL RESOURCES

**Phase 2 General Management Plan
Public Input Workshop
Bald Mountain Recreation Area
March 18, 2012
6 – 8 p.m.
The Orion Center**

- 1. Introductions at 6:00 p.m.**
- 2. Brief Presentation of Management Planning Process and Status (15 minutes)**
 - a. Review Approved Phase 1 Management Zone Plan
 - b. Action Goal Development – Draft 10-year strategies to address Management Zone Map
 - c. Bald Mountain Planning Team Draft Action Goals organized by:
 - ☐ General Action Goals
 - ☐ Backcountry Zone
 - ☐ Natural Resource Recreation Zone
 - ☐ Developed Recreation Zone
 - ☐ Visitor Service Zone
 - ☐ Cultural Landscape Overlay
 - d. Priority Exercise explained
 - e. Action Goals input sheets described
 - f. Questions and Answers
- 3. Open House (1 hour 25 minutes)**
 - a. You are invited to visit the stations and talk to Planning Team members
 - b. Color dots are available for you to identify your priority actions (please limit yourself to 15 dots)
 - c. Action Goal input sheets are available for you to contribute additional suggested actions goals
- 4. Adjournment at 8:00 p.m.**

Bald Mountain Draft Action Goal	Target Date
Natural Resources	
1. Create a Stewardship Plan 1	3-5 Years
2. Implement Stewardship Plan for the park	On-going
3. Implement the specific provisions of the Biodiversity Stewardship Plan (BSP) 2	On Hold
4. Update Natural Features Inventory	On-going
5. Survey and manage the aquatic system within the recreation area to identify resources and assess opportunities 8	On-going
6. Review survey of Eastern Massasauga Rattlesnake habitat and follow EMR management guidelines (in All Applicable Zones where Candidate Conservation Agreement w/Assurances applies) 4	On-going
7. Preserve the quality of the known exemplary natural communities 3	On-going
8. Implement invasive species control (land and water) 2	On-going
Historic/Cultural Resources	
1. Complete the cultural resources survey of the park for interpretation, protection and preservation 2	5 Years
2. Develop and conduct monitoring program for archeological resources 5	On-going
3. Protect archaeological/cultural resources identified by inventory 1	On-going
4. Review all proposed earthwork activities for potential impact on historic/cultural resources	On-going
Recreation Opportunities	
1. Maintain park open to hunting 9	On-going
2. Identify opportunities to improve connectivity within and beyond park boundaries/units and develop trail routes that support the mutual goals of PRD and the local partners 18	2 Years
3. Identify and evaluate ecotourism opportunities	On-going
4. Coordinate Recreation Area programs with County and Local Recreation Partners activities 3	On-going
5. Develop ADA hunting opportunities 2	5 Years
6. Feasibility and needs study of hosting large recreational events 1	2 Years
7. Identify opportunities for overnight accommodation 9	5 Years
Education Opportunities	
1. Develop specific interpretation and education opportunities 4	On-going
2. Coordinate Recreation Area programs with County and Local Recreation Partners activities 5	On-going
3. Utilize variety of old and new media, including audio and visual technologies, podcasts, and other emerging technologies for interpretation 2	On-going
4. Develop interpretive message for Eastern Massasauga Rattlesnake 2	5 Years
5. Develop/install kiosks and displays appropriate to the zone	5 Years
Management Focus	
1. Land acquisition within dedicated boundary 4	On-going
2. Wildfire Plan and Emergency Plan 2	Completed With Annual Update
3. Explore and develop revenue generating opportunities that are sustainable 2	On-going
4. Dedicate staffing and budget resources to address goals (including partnerships and volunteers as appropriate) 2	On-going
5. Promote volunteer partnerships to meet resource goals 4	On-going
6. Develop a marketing plan for this park 3	5 Years
7. Establish a co-management agreement between PRD and Marketing & Outreach for the shooting range 3	(Lease expires in 2029)
8. Review all concession contracts	On-going Annually
9. Address user conflicts 5	On-going
10. Conduct parking assessment to improve parking/access within BMRA 2	2 Years
11. Evaluate/assess EQ trail and facility needs 41	2 Years
12. Identify and secure appropriate physical connection between units	On-going
Development	
2. Implement parking assessment to improve parking/access within BMRA 5	2 Years
2. Implement EQ trail recommendations 34	10 Years
3. Restore and/or re-route unsustainable segments of trails 5	5 Years

Backcountry Zone	
Draft Action Goal	Target Date
Natural Resources in Backcountry Zone	
1. See General Action Goals	
Historic/Cultural Resources in Backcountry Zone	
1. See General Action Goals	
Recreation Opportunities in Backcountry Zone	
1. Maintain and enhance opportunities for birding hunting/fishing/gathering/trapping 6	On-going
2. Conduct study of trail connection either from Conklin Road or Stoney Creek Road to the North Unit's hiking/biking/cross country ski trail network 12	1-2 Years
Education Opportunities in Backcountry Zone	
1. See General Action Goals	
Management Focus in Backcountry Zone	
1. See General Action Goals	
Development in Backcountry Zone	
1. Upgrade and/or re-route trails to accommodate use compatible with natural character of zone 5	On-going
2. Develop additional parking and an entrance feature for the North Unit 4	10 Years
3. Develop improved trailheads in North Unit 3	On-going

Natural Resource Recreation Zone	
Draft Action Goal	Target Date
Natural Resources in Natural Resource Recreation Zone	
1. Implement the specific recommendations from the Stewardship Plan	On-going
Historic/Cultural Resources in Natural Resource Recreation Zone	
1. See General Action Goals	
Recreation Opportunities in Natural Resource Recreation Zone	
1. Relocate snowmobile area to West Unit north of Greenshield Road 1	10 Years
2. Maintain and enhance opportunities for hunting/fishing/gathering/trapping, bird watching, trail use and camping 10	On-going
3. Explore acquisition of Boy Scout Camp, evaluate infrastructure and opportunities and appropriate zone designation 18	10 Years
Education Opportunities in Natural Resource Recreation Zone	
1. See General Action Goals	
Management Focus in Natural Resource Recreation Zone	
1. Develop strategy for reducing vandalism at the Rudd Mill site 3	1 Year
2. Convert agricultural fields to habitat or ecological restoration per Stewardship Plan 3	10 Years
Development in Natural Resource Recreation Zone	
1. Develop parking for relocated snowmobile area in West Unit	10 Years

Developed Recreation Zone	
Draft Action Goal	Target Date
Natural Resources in Developed Recreation Zone	
1. See General Action Goals	
Historic/Cultural Resources in Developed Recreation Zone	
3. Continue to explore feasibility of restoration and repurposing of nautilus buildings 17	1 Year
Recreation Opportunities in Developed Recreation Zone	
1. Develop a feasibility study to evaluate needs and best use for day use area (the Developed Recreation Zone of the South Unit) 4	5 Years
2. Develop an engineering feasibility study of the Trout Lakes system and dams 5	5 Years
Education Opportunities in Developed Recreation Zone	
1. See General Action Goals	
Management in Developed Recreation Zone	
1. Program and market events and activities designed to increase visitor attendance	On-going
Development in Developed Recreation Zone	
1. Repurpose, replace, or remove the nautilus buildings 1	5 Years
4. Implement the accepted recommendations of the feasibility studies	10 Years

Visitor Services Zone	
Draft Action Goal	Target Date
Natural Resources in Visitor Service Zone	
1. See General Action Goals 1	
Historic/Cultural Resources in Visitor Service Zone	
1. See General Action Goals	
Recreation Opportunities in Visitor Service Zone	
1. See General Action Goals	
Education Opportunities in Visitor Service Zone	
1. See General Action Goals 7	
Management Focus in Visitor Service Zone	
1. Develop a management plan for interpretation and programming 1	3 Years
Development in Visitor Service Zone	
1. Relocate and increase the size of the visitor parking lot and make it more universally accessible 2	2 Years
2. Upgrade the aesthetic appearance of the headquarters and visitor accommodations 2	On-going

Cultural Landscape Overlay Zone	
Draft Action Goal	
1. Follow underlying zone recommendations and/or general recommendations	

BMRA 10-YEAR ACTION GOALS

ADDITIONAL ACTION GOALS TO CONSIDER:

Action Goal	Management Zone
<ul style="list-style-type: none"> • In read a lot about lake surveys and planting statistics around the state. I have never heard anything regarding the lakes at BMRA. • Stony Creek Road Access – I have been around the state and have never seen restrictions to state lane like there is on Stony Creek. The parking lot should be reopened. I know there are concerns about the sledding hill use, but kids are getting out there anyway. Why not make it accessible for the public to safely get in. • Deer check station back!! • Hunting rights equal to southern as north country. It's frustrating that we don't have the same rights at BMRA for turkey and goose compared to what northern parks offer. • Repave Main road for four season use 	
<ul style="list-style-type: none"> • Consider equestrian trail development in 2 year plan • Begin execution of "implement EQ trail recommendations" in a 3-7 year plan 	Backcountry and Natural Resources Recreation
<ul style="list-style-type: none"> • EQ Trails and Connectors • Work with county, city, towns for easements for horse trail connectors 	Backcountry and NRR
<ul style="list-style-type: none"> • Interpretive and Recreation Activities 	All Zones
<ul style="list-style-type: none"> • East side of Kern from Gunn To Paint Creek Trail 	
<ul style="list-style-type: none"> • Focus on connector trail from Addison Oaks thru BMRA to Paint Creek Trail; multi-use trail including equestrians 	
<ul style="list-style-type: none"> • Less administrative chatter, more action please! You've seen our dots – I feel they have been overlooked! 	
<ul style="list-style-type: none"> • Need a connector EQ trail to other trails 	
<ul style="list-style-type: none"> • No horses in Backcountry and Natural Resource Rec. Zone • Closer supervision of hunters. Many inexperienced hunters in BMRA take a lot of pot shots, which is hazardous to other users 	
<ul style="list-style-type: none"> • Snowmobile trails in the winter can be horse trails in the summer 	
<ul style="list-style-type: none"> • Phagmite control • Park manager house – make it a rental facility 	All Zones
<ul style="list-style-type: none"> • Use more volunteers for keeping trail markers current 	
<ul style="list-style-type: none"> • Provide group camping 	All Zones
<ul style="list-style-type: none"> • Better advertising of events such as this one • Use of former park manager's residence • Signage for hunting in restricted areas 	
<ul style="list-style-type: none"> • Education – Project WILD; Project Learning Tree • Have a naturalist at the park • I have an idea – there is an Oak Tree across the street (Joslyn) from Canterbury Village on BMRA property; it should become a Hawk Woods Nature Center play site • You need Kevin Frailey and Natalie Elkins on your team! 	All Zones All Zones

Although I'm unable to attend the public meeting to discuss the Bald Mountain Recreation Area Phase II Master Plan, I would like to forward my comments:

As a park commissioner for Oakland Township I've been involved with park and trailway development for 24 years. Our goals have always included connecting our trail system to surrounding trailways of our adjoining communities. We recently saw the completion of a multi-use trail in Addison Oaks County Park which connected to our Cranberry Lake Park. Access to the twelve miles of trails in Addison Oaks from Cranberry Lake Park was greatly anticipated by our equestrian residents!

Imagine their excitement to see the possibility of a greater multi-use trail system. The Polly Ann Trail could be connected to our Paint Creek Trail through the BMRA. This in turn allows a connection to the Addison Oaks trail system. I'm not sure how many miles that might be, but it certainly would be an astounding trail system for walkers, hikers, bikers and of course equestrians!

I urge you to add this trail development to the BMRA Master Plan and to make every effort to implement this trailway plan!

Sincerely,

Colleen Barkham
Oakland Township Park and Recreation Commission

I plan to attend. I have attended these meetings over the last year....

I support horse back riding trails and overnight camping in this park and more.

I also totally support the preservation of the historic resources in this park, two state markers, **G. Birkerts bathhouse complex** near the beach and the stone park manager's house built in 1948. I have written this as input at prior DNR Master Plan meetings, spoken it in the meetings as well and made it know to Park Manger Andrew Cole.

Thank you, Janine Saputo, Oakland Twp. ... I live across Predmore Road from the park.
I know Jill Bahm.

Welcome – Please Sign In!

DNR Public Input Workshop
Bald Mountain Recreation Area
March 18, 2013

Name	Affiliation	Address	Phone #	Email Address
Dave & Gail Firman	EQ Trails; BCH-MI			
Steve Keim	OREA			
Karen Gourlay	DNR			
JJ Coffey	DNR			
Glen Holler				
Janine Saputo	Oakland Twp.			
Bill Stark	DNR – Retired			
David Malloch	DNR – LED			
David DeMocker	Neighbor			
Caryl Lindsay	Concerned Horse Rider			
Tom Asmus				
Sandra Morgan	Equestrian Trail Rider			
Tracy Evans	Equestrian			
Joan Beaudoin				
Jack Ward	Friends of BMRA			

Name	Affiliation	Address	Phone #	Email Address
Rosalie Ward	Friends of BMRA			
Al Barnes	FOBM			
Merle Richmond	Equestrian Trail rider			
Gabrielle Hume	BCH-PRB Equestrian			
Mike Mansour	Hawk Woods Nature Center			
Lisa Sokol	Orion Township			
Judy Workings	Oakland Township			
Mike Workings	Resident; trail/park user			
Gerry Lee	Stewardship/Volunteer			
JoAnn VanTassel				
Craig Blust				
Aaron Whatley	Orion Twp.			
Daniele Bukowski	Outdoorsman			
Tom Bailey				
Fred Austin	S.O.L.A.R			
Libby Dwyer	Addison Oaks Equestrian			

Bald Mountain Phase 2 General Management Plan
Park User Questionnaire
July 8, 2013 through August 10, 2013

A park user questionnaire was conducted at Bald Mountain Recreation Area between July 8 and August 10, 2013. Park staff asked visitors five questions about their visit to the park. A total of 191 responses were collected at various times throughout the day and throughout the week. The questionnaire was conducted at the park's parking areas, including launch sites, but the majority of respondents were at the day-use beach parking area. Although the data gathered captured a wide demographic, it reflects summer use only and accounts for approximately 0.6% of the estimated visitors to the park between the July 8 and August 10 timeframe.

Summary

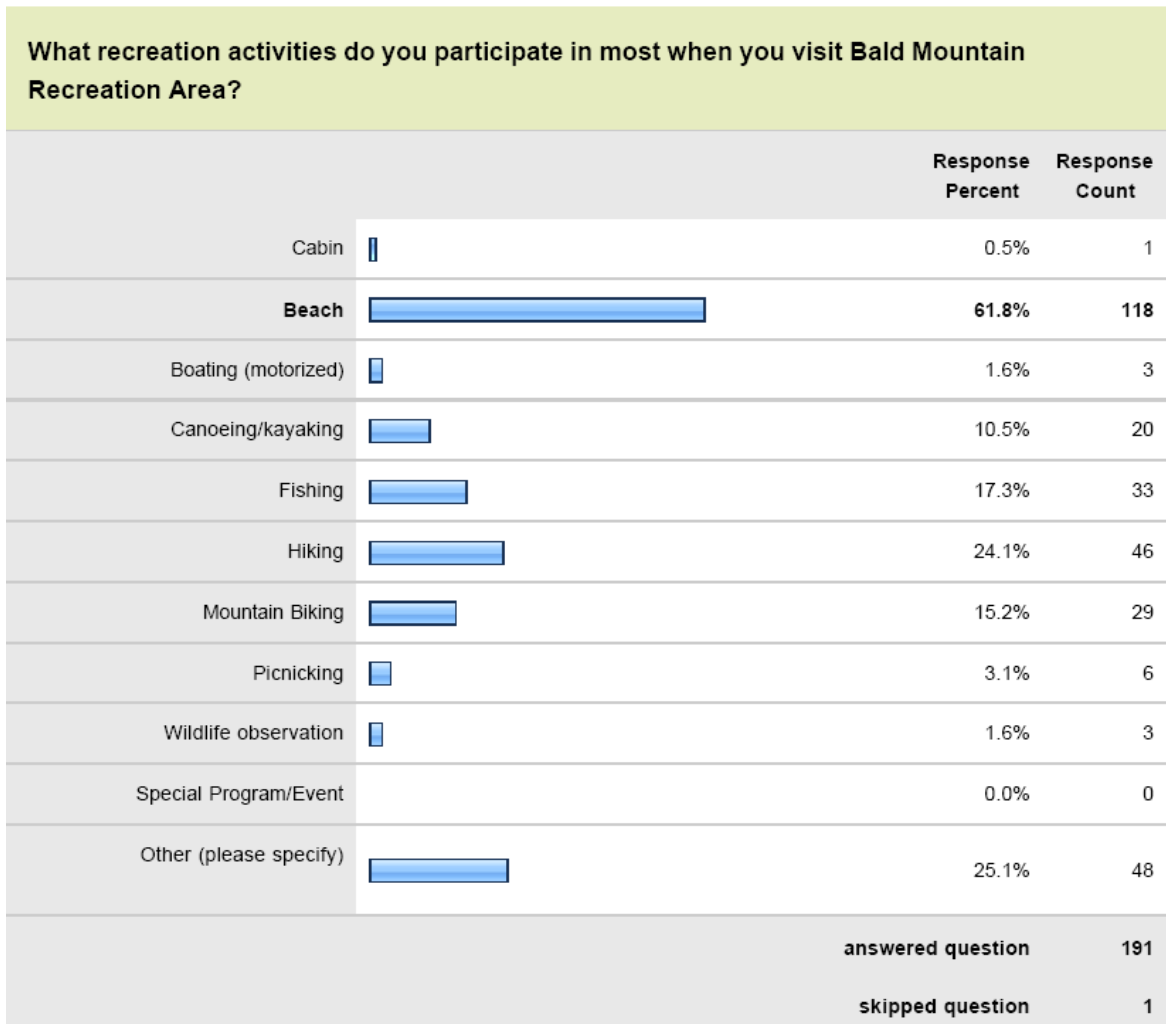
Of the 191 responses, most people visited the park for the beach area, with swimming being the most popular recreation activity. The majority of park visitors polled were from the immediate Lake Orion area with others coming from the Metro-Detroit region.

The most favorable aspects of the park were identified as the park's quiet and relaxing atmosphere; its cleanliness, natural setting and convenient location (close to home).

Visitors were also asked what changes they would like to see at the park. The majority of respondents want the park to remain as is without any changes. Other suggestions included concessions or vending machines, playground equipment, better signage and marketing, road and trail improvements and lake weed control.

The following pages show the results of the questionnaire in more detail.

2.



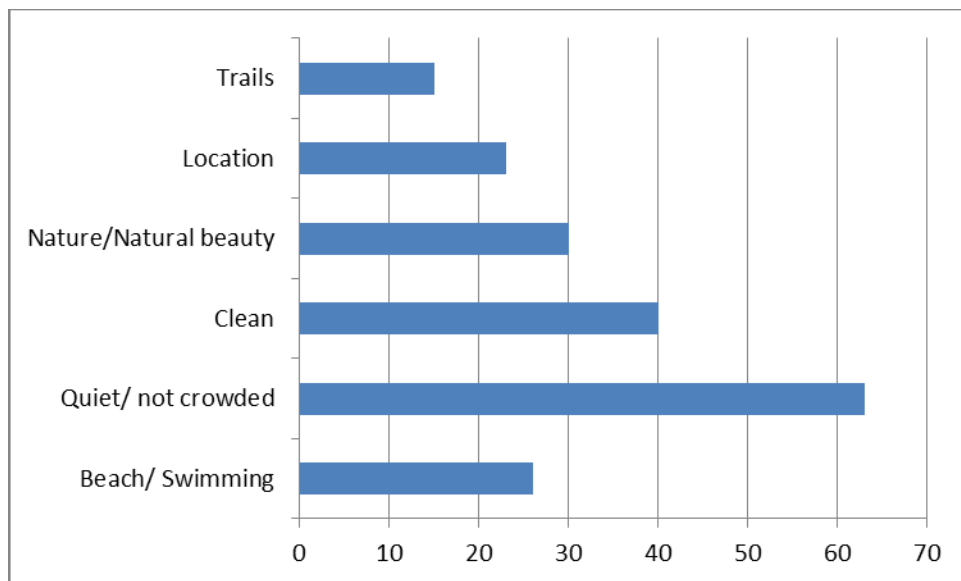
OTHER responses (48 responses)

- Swimming (12)
- Hunting (7)
- Walking (5)
- Volleyball (4)
- Running (4)
- Range (3)
- Biking (2)
- Playground (2)
- Paddling (1)
- Sleeping (1)
- Wedding (1)
- Frisbee (1)
- Sledding (1)
- Snorkeling (1)
- Geocaching (1)
- Scenery (1)
- Golf (1)

3. Where do you live? (191 responses)

- Lake Orion (52)
- Rochester Hills (17)
- Pontiac (16)
- Oxford (14)
- Auburn Hills (13)
- Oakland (7)
- Rochester (6)
- Macomb (5)
- Warren (3)
- Lapeer (3)
- Leonard (2)
- Detroit (2)
- Royal Oak (2)
- Clawson (2)
- Shelby Twp. (2)
- Clarkston (2)
- Fostoria (1)
- St. Clair Shores (1)
- Brighton (1)
- Russia (1)
- Bloomfield Hills (1)
- Troy (1)
- Clinton Twp. (1)
- Waterford (1)
- Ferndale (1)
- Texas (1)
- Flint (1)
- Farmington Hills (1)
- Roseville (1)

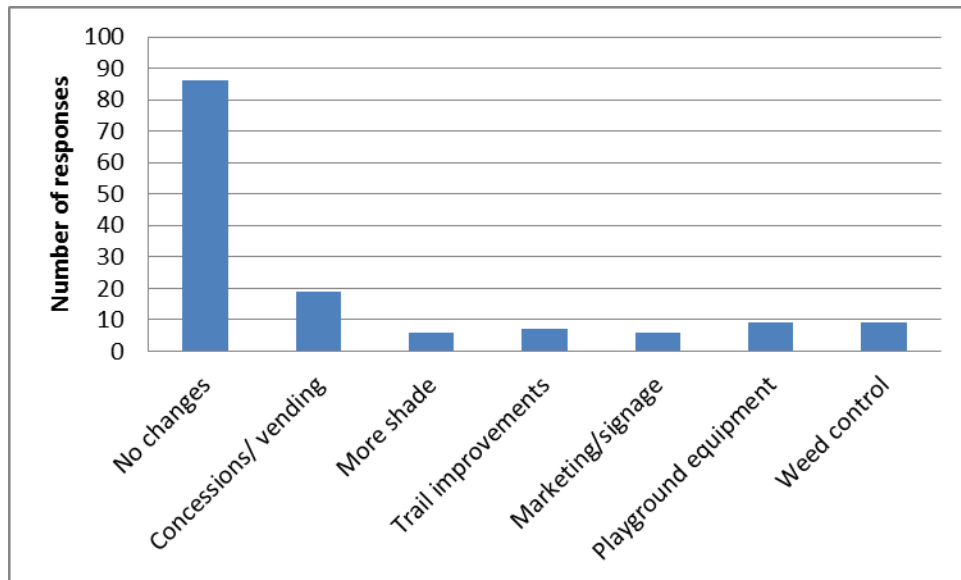
4. What do you like the most about the park? (191 responses)



Other responses:

- Fishing; range of activities; shooting range; pavilions; family and pet friendly; canals

5. Are there any changes you would like to see? (191 responses)



Other responses:

- Clean up goose poop (5)
- Dog Park (3)
- Market the park (3)
- Trail Maintenance (3)
- Fix roads (3)
- Disc Golf Course (2)
- More Fishing Access(2)
- More Water Activities (2)
- More vault toilets by boat launch (1)

Appendix B –Summary of Team Meetings

The following provides an overview of the Planning Team meetings:

Overview of Planning Team Meetings

- ☐ **Team Meeting #1 (October 25, 2012)** – Located at the DNR Southfield Operations Center, the meeting was an opportunity for Planning Team members to provide initial input for the Phase 2 Long-Range Action Goals Plan.
- ☐ **Team Meeting #2 (November 30, 2012)** – Located at the DNR Southfield Operations Center, the meeting provided an opportunity for the Planning Team to engage in on-going discussion regarding the Long-Range Action Goals Plan.
- ☐ **Team Meeting #3, Go-To-Meeting (January 28, 2013)** – The Planning Team reviewed the input received from the December 20, 2012 Stakeholder/Recreation Partner Workshop.
- ☐ **Team Meeting #4, Go-To-Meeting (April 2, 2013)** – The Planning Team reviewed input received from the March 18, 2013 Public Input Workshop.

**Bald Mountain Recreation Area
Phase 2 Kick-Off Meeting
October 25, 2012
1:00 – 4:00 PM**

- 1) BMRA Meeting Attendees: Paul Curtis; Andrew Cole; Lisa Gamero; Karen Gourlay; Ray Fahlsing; Kris Bennett; Luba Sitar; Jim Francis; David Birchler; Susie Roble
- 2) The purpose of the meeting was to have the planning team provide input for the Phase 2 Long-Range Action Goals Plan.
- 3) Phase 1 review is not necessary; the just completed Legal Mandates are still valid. Phase 1 is awaiting approval.
- 4) DB gave a brief overview of Phase 1, the management zones, and the legal parameters memo.
- 5) Park Manager's Wish List
 - a) New beach buildings
 - b) Feasibility Study to evaluate best user/needs for day use area
 - c) Capture users coming to area as a result of Palace of Auburn Hills
 - d) Better trail system south of Greenshield Road
 - e) Connectivity between all three units
 - f) Paint Creek Trail connection plus land trade with Orion Township
 - g) Boy Scouts Camp north of West Unit being closed – may be available and is within approved boundary
 - h) Need better parking and an entrance feature for North Unit
 - i) More ADA trail access and facilities
 - j) Water electric sewer for North Unit
 - k) Engineering Feasibility Study of Trout Lakes system/dam structures
 - l) West Unit needs "new look," possibly related to hunting
- 6) Can we consider Greenshield and/or Scripps for de-emphasis to park road/seasonal status
- 7) Camping opportunities need to be more specialized so that they are more desirable and less like the competition
- 8) Relocate north campground on Tamarack Lake
 - a) Discussion of whether it makes sense to acquire the two parcels on the south side of Tamarack LakeRay argued that putting new cabins on Indian Lake makes more sense
- 9) Make sure we detail the subject matter of the feasibility studies

**Bald Mountain Recreation Area
Phase 2 Team Meeting #2
November 30, 2012
9:00 AM - Noon**

- 1) BMRA Meeting Attendees: Paul Curtis; Debbie Jensen Lisa Gamero; Karen Gourlay; Ray Fahlsing; Kris Bennett; Andrew Cole; David Birchler; Susie Roble
- 2) On-going discussion regarding Phase 2 Long-Range Action Plan Goals
- 3) Eastern Massasauga Rattlesnake (EMR); Candidate Conservation Agreement with Assurances (CCAA)
- 4) Discussion Regarding Stakeholders/Partners Workshop
 - a. Need workshop-style location
 - b. Poll team
 - c. Target date – 3rd week in December (Dec. 17th-Dec. 21st)

**Bald Mountain Recreation Area
Stakeholder Input Review GoToMeeting
January 28, 2013
10:30 AM – Noon**

Attendees: Debbie Jensen, Ray Fahlsing, Lisa Gamero, Karen Gourlay, Andy Cole, David Birchler, Susie Roble

1. Reviewed Action Goals Priority Dot Activity
 - Debbie commented that it's clear that connectivity is a big priority for stakeholders
2. Written Comments
 - Connection between Polly Ann Trail and Paint Creek Trail – make multi-use
 - Connect BMRA North Unit to Conklin Road by formally opening the trail
 - Andy – it's been used over the years to get people from Conklin Road neighborhoods to existing trails; about ½ mile long; the DNR does not maintain the trail
 - Andy - Parking is an issue since there really is no way to park; if it's going to become a formal trail then it should become a trailhead with parking provided
 - Andy – Orion Township's support is needed and possibly the Road Commission
 - Another option is opening up the emergency access point off Stoney Creek Road; Ray feels that a paved trail connection would be better off Stoney Creek Road compared Conklin since Stoney Creek is already paved and Conklin isn't
 - With regard to coordinating programming with location Recreation Partners, the Team noted that Auburn Hills Nature Center brings children to BMRA for swimming, Orion HS conducts outdoor classes at BMRA, and Oakland Township Parks & Rec. will soon be meeting with BMRA park manager to discuss conducting interpretive programs.
 - **ADD Action Goal to Backcountry Zone – further study of connection into park either from Conklin or Stoney Creek (partners would be Orion Township and Road Commission)**
 - DB – we will send out a doodle poll link for upcoming (Feb/March) public input meeting
 - We will also include our response to stakeholder comments in powerpoint presentation at Public Input meeting for Bald Mountain and Island Lake
3. Planning Team discussed the “nautilus” changing and restroom buildings. PRD study determined that the cost to restore and repurpose these structures was not feasible within the PRD's foreseeable budget future. SHPO has nominated the structure for the National Register of Historic Structures and the PRD is expected to formally object to the designation.

**Bald Mountain Recreation Area
Public Input Review Go-To-Meeting
April 2, 2013
9-10:30 AM**

1. Meeting Attendees – Luba Sitar, Andy Cole, Debbie Jensen, Lisa Gamero, Kriss Bennet, Karen Gourlay, Ray Fahlsing, David Birchler, Susie Roble
2. Review of Priority Activity
 - a. Change EQ to Equestrian
 - b. Debbie – change Action Goals title from Target Date to Target Completion Date
 - c. Debbie – add an intro for each management zone prior to listing action goals
3. Additional Action Goals
 - a. Sledding hill is not open due to safety issues; a parking lot will not be added so that the activity is not encouraged (the parking area near this location was intended for hunters only)
 - b. Ray pointed out that there is no difference in hunting rules between northern and southern state parks; the safety zone for parks in urban areas is often larger, however
 - c. Equestrian trails – there is clearly the potential for connecting Paint Creek Trail to Polly Ann Trail via BMRA
4. Repurposing the “nautilus” buildings – SHPO cost estimate is quite high and not in PRD’s current budget
5. Work with our partners to identify and implement trail connections that include equestrian trail connections
6. Connector trails may be able to be accommodated but bridle trails within the recreation area are incompatible with the resource
 - a. The issue is that BMRA cannot handle any more trail density
 - b. Not all parks are appropriate for every use
 - c. Statewide Trails Plan – where there are trails appropriate for equestrians, the park should provide between 10 -20 miles
7. Debbie – do we want to “lead in” to these Action Goals with a paragraph that puts things into perspective
 - a. Include our instructions to the participants regarding use of dots on honor system
 - b. Can we provide an intro for each section that provides perspectives
8. David Birchler will revise the Action Goals headings and share with Debbie
 - a. The Action Goals Plan was revised based on input from planning team members