

Table of Contents

Cover	5
Introduction	6
Missions and Commissions	7
Sport Fish Restoration Program	8
Welcome to the Great Lakes	9
The Harbor Program and Funding	10
Fees, Docking Space, Radio Communications	11
Harbor Arrival Procedures and Courtesy	12
Fueling, Navigation Charts, Harbor Location Information	13
Dump Stations and Clean Marina Program	14
Commercial Fishing Nets and Fish Disease	15
Invasive Plants and Animals	16
Boating Smart from the Start	17
Michigan Fishing and Charts	18
Waterways Dollars at Work	19
Recreation Passport	20
Michigan Map Guide	21
Michigan Harbors - Upper Peninsula	21
Michigan Harbors - West Coast	22
Michigan Harbors - East Coast	23
Lake Erie Harbors	24
Bolles Harbor of Refuge	24
Monroe Harbor of Refuge	25
Lake Erie Metropark Harbor of Refuge	26
Detroit River Harbors	27
Trenton - Elizabeth Park Marina	27
Wm. G. Milliken State Park and Harbor	28
Detroit - Erma Henderson Park	29
Grayhaven State Harbor	30
Lake St. Clair Harbors	31
St. Clair Shores Harbor of Refuge	31
Metro Beach Metropark Marina	32
Mt. Clemens Harbor of Refuge	34
St. Clair River	35
Charles F. Moore Harbor	35
Port Huron River Street Marina	37
Lake Huron Harbors	39
Lexington State Harbor	39

Port Sanilac Harbor	40
Harbor Beach Marina	42
Port Austin State Harbor	44
Caseville Marina	45
Bay Port Harbor of Refuge	46
Sebewaing Marina	47
Bay City - Liberty Harbor	48
Au Gres State Harbor	49
East Tawas State Harbor	50
Oscoda Harbor of Refuge	51
Harrisville Municipal Marina	52
Alpena Municiple Marina	54
Presque Isle State Harbor	56
Rogers City Marina	57
Hammond Bay State Harbor	59
Cheboygan County Marina	60
Cheboygan Municipal Marina	61
Bois Blanc (Island) Township Harbor	62
Straits State Harbor	63
Mackinaw City Municipal Marina	64
Mackinac Island State Marina	65
St. Ignace Marina	66
Hessel Marina	68
Cedarville Marina	69
DeTour State Harbor	70
St. Mary's River	71
Lime Island State Harbor	71
Sault Ste. Marie - George Kemp Marina	72
Sault Ste. Marie - Charles T. Harvey Marina	73
Lake Michigan Harbors	74
Beaver Island Municipal Marina	74
Harbor Springs Municipal Marina	75
Petoskey Marina	77
Boyne City - F.G. Moore Municipal Marina	79
Charlevoix City Marina	80
East Jordan City Marina	82
Elk Rapids - E.C. Grace Memorial Harbor	83
Traverse City - Duncan L. Clinch Marina	85
Greilickville - Elmwood Twp. Marina	86
Suttons Bay Marina	87

Northport - G. Marsten Dame Marina	88
Leland Township Marina	90
South Manitou Island Harbor of Refuge	92
Frankfort Municipal Marina	93
Arcadia Veterans Memorial Marina	94
Portage Lake Harbor of Refuge	95
Manistee Marina	96
Ludington Municipal Marina	97
Ludington Harbor View Marina	99
Pentwater Municipal Marina	100
Whitehall - White Lake Municipal Marina	101
Muskegon - Hartshorn Marina	103
Grand Haven Municipal Marina	104
Holland Harbor of Refuge	106
Saugatuck Harbor of Refuge	107
South Haven Municipal Marina	108
Saint. Joseph - West Basin Marina	110
New Buffalo Marina	112
Menominee Marina	113
Cedar River State Harbor	115
Escanaba Municipal Marina	116
Gladstone Marina	117
Fayette Historic State Park - Snail Shell Harbor	118
Manistique Marina	119
Naubinway - Garfield Township Marina	120
Lake Superior Harbors	121
Whitefish Point State Harbor	121
Little Lake State Harbor	122
Grand Marais Marina	123
Munising - Bayshore Marina	124
Marquette - Cinder Pond Marina	126
Marquette - Presque Isle Marina	127
Big Bay Harbor - Marquette County	128
L'Anse Municipal Marina	129
Baraga Municipal Marina	130
Hancock - Houghton County Marina	131
Houghton City Marina	132
Grand Traverse Bay - Schoolcraft Twp. Marina	133
Lac La Belle State Harbor	134

Copper Harbor State Harbor 135

Eagle Harbor State Harbor 136

Rock Harbor - Harbor of Refuge 137

Washington Harbor - Harbor of Refuge 138

Ontanogan Village Marina 139

Black River - U.S. National Forest 140

MICHIGAN HARBORS GUIDE

Department of Natural Resources



Michigan.gov/Harbors

Michigan Harbors Guide

This publication is designed to offer information, location and amenities of Michigan's many harbors. It provides an aerial photograph and short description of each harbor to offer you a view of what to expect while traveling on Michigan's waters. This guide is not intended for navigational use. Please refer to your lake charts as a guide for navigational information.

Select harbors can be reserved through a reservation system. Reservations may be made for all dates up to six months in advance of arrival.

For reservations call: 800-44-PARKS or visit: www.MiDNRReservations.com

For information or assistance on this publication, contact the Michigan Department of Natural Resources, P.O. Box 30257, Lansing, MI 48909.

This publication, and updates, are available as a pdf at Michigan.gov/Boating.

For more online boating information, visit the [Michigan Recreational Boating Information System \(MRBIS\)](#)



Missions and Commissions

Department of Natural Resources

Mission Statement

The Michigan Department of Natural Resources (DNR) is committed to the conservation, protection, management, use and enjoyment of the state's natural and cultural resources for current and future generations.

Natural Resources Commission

The Natural Resources Commission (NRC) is the governing body for the DNR. In providing a strategic framework for the DNR to effectively manage the state's resources, the NRC works closely with a broad cross-section of constituencies, including the Michigan State Waterways Commission, to establish and continuously improve natural resources management policy. The NRC conducts monthly, public meetings in locations throughout Michigan. Citizens are encouraged to participate in these public forums. For dates and locations, please visit Michigan.gov/NRC.

Michigan State Waterways Commission

Mission Statement

The Michigan State Waterways Commission was created by Act 320 of 1947 and transferred to the Department of Conservation on January 1, 1966. The commission members are appointed to three-year terms by the governor, with the advice and consent of the senate. Upon expiration of a term, a member may continue to serve until reappointed or a successor is appointed. Learn more about the commission at Michigan.gov/MSWC.



Sport Fish Restoration Program

The Federal Aid in Sport Fish Restoration Program provided funding for this publication.

A Cycle for Success:

Anglers, hunters, boaters, purchase fishing/hunting equipment and motor boat fuels.

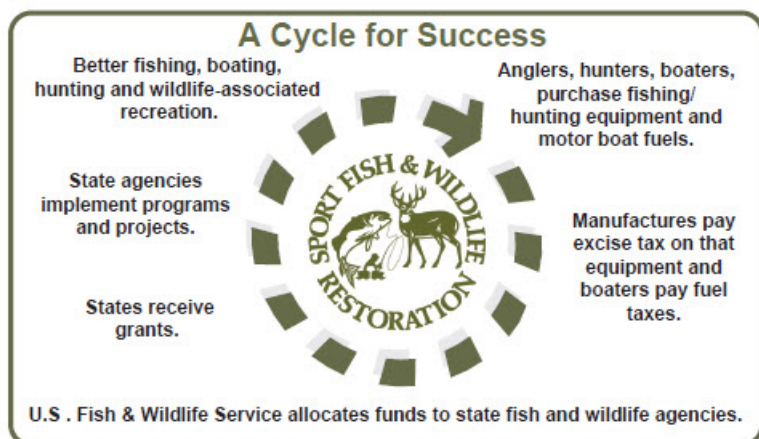
Manufactures pay excise tax on that equipment and boaters pay fuel taxes.

U.S . Fish & Wildlife Service allocates funds to state fish and wildlife agencies.

States receive grants.

State agencies implement programs and projects.

Better fishing, boating, hunting and wildlife-associated recreation.



wsfrprograms.fws.gov/Subpages/GrantPrograms/SFR/SFR.htm

Since 1937, WSFR has provided over \$12 billion for fish and wildlife, supplied jobs for many Americans, and benefitted local economies through boating, fishing, hunting and shooting activities.

Michigan State Waterways Program Funding

Funding for this publication provided by the Michigan State Waterways Fund.

Welcome to the Great Lakes

Boating on the Great Lakes is an experience you won't soon forget. These waters have charmed and captured the spirit of boaters for centuries. Islands are sprinkled throughout the great bodies of water, calling for our attention and exploration. It's the Great Lakes that define Michigan and give our state its name.

"Michigama," meaning 'large lake,' is a word derived from the Chippewa language. It was applied to the entire Great Lakes region by Native Americans and then by explorers who first traversed these great waters in the sixteenth century. Over time, the early residents added more names and sorted out the local geography, but the name Michigan remained as a reference to the entire region and one of our Great Lakes.

Today, we know Michigan as "The Great Lakes State," and boaters from around the globe are discovering the wonderful experiences that these great bodies of water afford. The Great Lakes are some of the largest freshwater lakes in the world!



The Harbor Program

The state of Michigan began its Great Lakes Harbors Program in 1947 when the legislature created the Michigan State Waterways Commission. The Commission was granted authority and supporting funds to create a marine highway along the 3,000 miles of Great Lakes shoreline. From 1947 to 1964, the Waterways Commission developed 83 harbors of refuge, enabling tens of thousands of boaters to encircle Michigan using safe harbors and overnight hospitality. In 1966, when the new state constitution went into effect, the Waterways Commission became part of the Department of Conservation. It has since become part of the Department of Natural Resources. Today, the number of safe harbors has grown as the Waterways Commission continues its mission to provide safe public access to the Great Lakes and inland waters of this state.

The program's goal is to locate harbors so that no boater will ever be more than 15 shoreline miles from safety. In a few places, it has not yet been possible to meet this goal, but the maps on pages 20-22 show how extensive this network of harbors has become.

Funding

Boaters have paid for much of this harbor network through taxes on marine fuel purchases and boat registration fees. Under the Waterways Grant-In-Aid Program, local units of government are given grant funds for construction of facilities.

In addition, the federal government supports the harbor program through funds allocated to the Dingell-Johnson Fund, administered by the Fish and Wildlife Service, U.S. Department of the Interior, for the development of boating facilities designed to match local contributions.

The U.S. Army Corps of Engineers played an important role in the initial development and actual construction of the majority of Michigan's harbor network. The federal/state/local program of cooperation is aimed primarily at the development of facilities. Responsibility for continuing operation and maintenance lies with local communities, and so reasonable fees are charged for the upkeep and operation of docks and piers, showers, restrooms and other facilities at these harbors.

Only where local resources are unable to support such facilities does the state consider assuming these responsibilities. As a result, the state of Michigan operates only 18 of Michigan's harbor facilities.

Fees

Even though local units of government operate most of the harbor facilities, their slip fees must not exceed the basic rate schedule adopted by the Michigan State Waterways Commission, unless the commission gives specific approval.

The transient fee schedule is based on the overall length of the vessel, which includes bow and stern projections. These rates include water and electrical service when available.

Docking Space

Harbor rules: There is no "right of the sea" that automatically permits a boater to utilize a boat slip. Slips are rented and controlled by the administering unit in the same manner as a person controls their own property. Because of this, following harbor rules and regulations are important for the continuation of dock space rental. In the end, it's about good sense, common courtesy and an enjoyable harbor visit for all.

Transient (non-seasonal) boating: In each harbor, dock space is allocated exclusively for use by transient boaters. The Commission reserves the right to regulate the use of docking spaces at harbors to assure availability of slips for transient watercraft.

In locations where seasonal rentals are permitted, communities have the right to rent transient-use slips when the seasonal renter is on cruise. This increases the availability of transient slips. Dock space is rented on a first-come, first-served basis. Reservations may be taken at various harbors and it's best to call ahead for an available slip. Harbor phone numbers and other pertinent information are featured on individual harbor pages.

Maximum stay: As a general rule, transient boaters may remain at the public dock for seven consecutive days. Boaters may use the dock again 48 hours after they have vacated. During periods of light traffic, that seven-day rule may be waived. At Mackinac Island State Harbor, the maximum stay during busy times is four consecutive days.

Radio Communications

Many harbors have VHF-FM radio communications available at the public dock. These radio base stations operate on assigned frequencies of 156.8 MHz (channel 16) and 156.45 MHz (channel 9). Channel 9 is the working channel for non-commercial watercraft.

New radios are equipped with frequency synthesis, but all boaters are urged to equip their onboard radio with channel 9, 16 and 22 (157.1 MHz Coast Guard working channel) capability.

Channel 16 is the international distress, safety and calling channel. In accordance with FCC regulations, absolutely no routine communications may be conducted on channel 16.

Harbor Arrival Procedures and Courtesy

Arrival Procedures

No-wake Arrival: When entering the protected area of the harbor, please keep your boat's movement reasonably close to no-wake speed. Once you've arrived, please proceed to a point near the service area or harbor attendant structure on the dock, request a slip assignment and then move to the boat slip. Following this order will ensure docking assistance from an attendant and assure you that you are in an available and serviced slip.

Dock Attendants: When docking, please give specific instructions to the dock attendant and they will be happy to help. In their training, they learn that the boater is in charge of his/her boat at all times and they (the attendant) are to react to commands, but not to anticipate them. If you need advice on the type and number of lines that you should use in the docking process, don't hesitate to ask. Likewise, feel free to request assistance in placing the lines. These services are all part of the dock attendant's duties and they are happy to assist.

Grill-free Docks: In most harbors, grills can not be used because they are a fire hazard. The majority of docks contain timber decking. Sparks from a grill can also damage sails and start fires on boats. Please check with a harbor attendant prior to using a grill on the dock. In most instances, grilling areas have been established on shore and reasonably close to the dock.

Courtesy

Arrival Speed: Since most harbors are relatively small, wakes can be quite pronounced on most boats moored at the dock. Please reduce your speed at several intervals during your approach to the harbor to prevent these wakes.

Noise: Because many harbors are removed from highways, railroads, airports and similar areas, there is little background noise. As a result, the noise from boats or from boaters on the dock can be very apparent. Many boaters cruise with their families, which often include very young children who go to bed early. Thank you for keeping your noise level low.

Dogs: Some harbors have dog walks or the equivalent, but most do not. Either way, please clean up after your pet, place the contents in trash containers and enjoy your walk!

Fueling

Cautionary Procedures: Taking on fuel at a dock can be dangerous if caution isn't taken beforehand. Please extinguish all fires, close all vents and place the metal nozzle firmly against the edge of the fuel tank intake pipe. Please follow any special fueling instructions given to you by a dock attendant. He or she has safety in mind.

Diesel: Diesel fuel is available at many but not all public docks. At some docks, diesel delivery can be arranged through the dock attendant when advance notice is given.

Credit Card Use: At most state-operated harbors, Visa, MasterCard and Discover will be accepted for all services. However, when fueling your boat, some harbors accept only credit cards of the company providing the fuel. Prior to fueling your boat, please make certain that your credit card can be honored. Some harbors accept dockage fees on credit cards only when fuel is purchased.

Navigational Charts

Boaters are asked to please use charts for the areas in which they boat. By having the information presented on charts, many unmarked hazards can be avoided. Charts are available from many commercial marinas or by mail order from agencies on page 14.

Harbor Location Information

The latitude and longitude for each harbor entrance is printed on each individual harbor page, which begins on page 23, for electronic location systems use. In most cases, the stated location is in the lake near the breakwater entrance. For each harbor that is located up a dredged channel, two locations are given: the lakeward end of the entrance channel and the marina itself. For Bay City (Saginaw River), the listed channel entrance location is where the buoyed shipping channel intersects the 12-foot depth line on the chart.

Boaters are encouraged not to rely solely on any one navigational method or technology, including the location information provided in this guide.

Providing or Upgrading Pump-Outs and Dump Stations

Federal Clean Vessel Act of 1992

A federal program initiated in Michigan in 1994 provides additional pump-out and dump station opportunities in the state's coastal waters.

Public and private marinas have the opportunity to secure new pump-outs and dump stations or upgrade their existing facilities thanks to the Clean Vessel Act (CVA) Boat Pump-out Grant Program, a federally subsidized, grant-in-aid program. This program was created through enactment of the Federal Clean Vessel Act (Public Law 102-587, Subtitle F) of 1992, and is administered by the U.S. Fish and Wildlife Service through state agencies. The act authorized the U.S. Fish and Wildlife Service to make grants to states to construct/renovate pump-outs and dump stations and for implementing associated education programs.

The grant funding for the CVA Program comes from the Sport Fish Restoration account of the Aquatic Resources Trust Fund, commonly known as the Wallop-Breaux Fund. In conjunction with the grant program, participating coastal states conduct a comprehensive survey and plan to determine existing capabilities of recreational boating facilities for marine sewage waste disposal. It also provides information needed to evaluate current and projected market needs in order to upgrade and expand availability of pump-outs and dump stations.

All pump-outs and dump stations provided for under the CVA Boat Pump-out Grant Program are available for public use. A list of all marinas receiving grants, for the installation of pump-outs or dump stations is available by contacting the Michigan Department of Natural Resources at 517-241-4934.

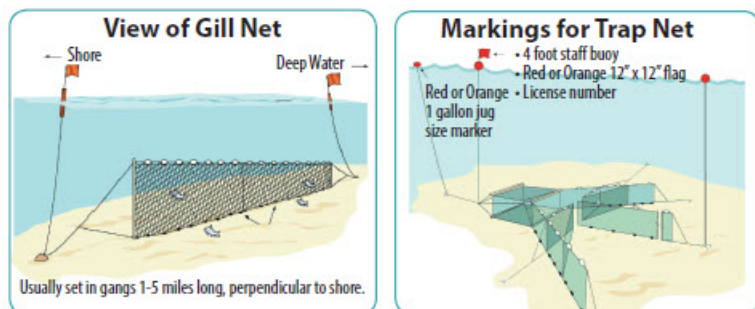
Clean Marina Program

The elimination and reduction of pollutants, nutrients and general refuse at marinas and boat launches is the mission for Michigan's Clean Marina Program. The voluntary program is aimed at preserving Michigan's aquatic gems. In order to receive designation as a Clean Marina, participants complete a 10-step process including training, a self-evaluation checklist, a site visit and evaluation. Clean Marinas set the standard in environmental responsibility for other marinas in the state. To learn more about this program call 517-241-5179.

Commercial Fishing Nets

Great Lakes' anglers and boaters may encounter commercial trap nets, gill nets and hook lines. All state-licensed or Native American commercial gear are marked with floats and or staff/flag combinations. Please give wide berth to any markers, since anchor lines may extend several hundred feet in any direction from the floats or flags and along the length of the gear.

Do not tamper with commercial fishing gear; it's illegal. Removal or destruction of marker buoys and flags or other disturbance of gear often results in the waste of a valuable resource, since the nets continue to catch fish. They can also create safety problems for others on the water.



Fish Disease

Viral Hemorrhagic Septicemia virus (VHSV), which does not affect humans in any way, is a fish disease first confirmed in the Great Lakes in 2005 when it caused a large fish kill in Lake Ontario. The disease was brought here by ballast water from large freighters between 2000-2002. Currently, it appears to have a very spotty distribution in Michigan. It has been detected in two inland lakes in Clare and Washtenaw Counties. The virus has been detected in 25 fish species in the Great Lakes region, including walleye, muskellunge, largemouth bass, bluegills, black crappie, Chinook salmon, whitefish, freshwater drum and gizzard shad. VHSV has never been found in any state fish hatchery. Fishing regulations are in effect to reduce the spread of this viral pathogen. See the [Michigan Fishing Guide](#) for complete details.

Help Prevent Invasive Plants and Animals

[New boating and fishing laws to prevent the introduction and spread of invasive species](#) are in effect as of March 21, 2019. Be sure you are familiar with these laws before you head out.

Invasive species such as the zebra mussel, round goby, sea lamprey, Eurasian ruffe, European frog-bit, Eurasian watermilfoil, rusty crayfish and spiny water flea are causing significant damage to Michigan's waters. A number of species could potentially reach the Great Lakes, including bighead and silver carp traveling up the Illinois River and Chicago Area Waterway System and snakehead fish, found in other Midwest states. Invasive species are harmful to recreational boating and fishing and cause extensive economic and natural resource damage.

Boaters and anglers can help prevent the spread of fish diseases and invasive aquatic species by taking the following steps:

Clean, Drain and Dry boats, trailers and gear to prevent moving aquatic invasive species and fish diseases.

- It is illegal to place a boat, boating equipment, or boat trailer in the water in Michigan if the boat, equipment or trailer has an aquatic plant attached.
- Boaters are required to drain all bilges and live wells when leaving a water body.
- Clean boats, trailers, and other equipment thoroughly before moving from one water body to another to keep from transporting undesirable fish pathogens and organisms. A 10% bleach solution is an excellent disinfectant for cleaning your equipment.
- After cleaning, allow boats, trailers and other equipment to dry for at least 5 days in the sun before use.



Don't Dump Bait – dispose of bait on land or in the trash to stop the spread of invasive species and fish disease.

- Michigan's Fish Disease Control Order prohibits moving many fish and baitfish species from one water body to another.



Ships – Exchange Ballast Water

- Vessels equipped with ballast water tanks that enter a United States port on the Great Lakes are required to follow U.S. Coast Guard guidelines for exchanging or disinfecting ballast water prior to entry to prevent aquatic invasive species. [Review the law.](#)

Natural resource managers are concerned about introduction of new species and urge people to report any discoveries. Anglers should save and report unidentified fish to contacts listed at Michigan.gov/Invasives or use the Midwest Invasive Species Information Network at www.misin.msu.edu.

Boating Smart from the Start

Safe, responsible, courteous boating is everyone's responsibility. Boater education is available through local sheriffs' departments, the Coast Guard Auxiliary, U.S. Power Squadron, local boat dealers and more.

For safe and enjoyable boating, it's important for all water sports enthusiasts to observe these safety guidelines:

- Wear a life jacket - 75 percent of boating fatalities involve drowning.
- Make sure your boat is properly equipped and your equipment is in good working order. In addition to all legally required equipment, such as life jackets and fire extinguishers, always carry a first-aid kit, nautical charts and an anchor. Make sure your navigation lights are working properly.
- Avoid drinking alcohol - nearly half of all boating accidents involve alcohol. Studies show that passengers are 10 times more likely to fall overboard when they have consumed alcohol.
- File a float plan - always let a family member or friend on shore know the who, what, when and where of your trip. Include phone numbers for the local sheriff or U.S. Coast Guard in the event you don't return when expected.
- Maintain a sharp lookout - stay alert for other boats, swimmers, skiers and objects in the water. This is especially true when operating in crowded waterways, at night and during conditions of restricted visibility.
- Carry a marine radio or cell phone - be prepared to call for help in case you are involved in an accident, your boat becomes disabled, or you otherwise need assistance. Make sure a cell phone is fully charged, but be aware that there are often gaps in cell phone coverage on the water.

Discover Michigan Fishing

Michigan offers some of the finest freshwater fishing in the world with more than 38,000 square miles of Great Lakes water, 3,000 miles of shoreline, 36,000 miles of rivers and streams and over 11,000 inland lakes. All you need is a fishing rod, tackle, bait and a Michigan fishing license.

[Purchase and print your fishing license online](#)



Charts

U.S. Charts:

FAA-DOT
10201 Good Luck Rd.
Glenndale, MD 20769-9700
Phone: 1-800-638-8972 or 301-436-6829
Fax: 301-436-3829

Canadian Charts:

Canadian Hydrographic Service
Department of Fisheries and Oceans
615 Booth Street
Ottawa, Ontario K1A 0E6
Phone: 616-998-4931

Waterways Dollars at Work

Your boating tax dollars provide future construction and upgrades to Michigan harbors and boating access sites.

Through the Waterways Fund the State of Michigan strives to provide quality support facilities to our boating public. Thank you for your support!



Recreation Passport

The Recreation Passport is an easy, affordable way for residents to enjoy and support outdoor recreation opportunities in Michigan.

For a small annual fee Michigan motorists get daily access to state parks, recreation areas, state forest campgrounds, non-motorized state trailhead parking and state boat launches. In addition, Recreation Passport holders can experience real savings at businesses and retailers that participate in the Passport Perks discount program.

Michigan residents can purchase the Recreation Passport by checking "YES" when renewing a license plate through the Secretary of State. You can also purchase the Recreation Passport by mail, kiosk, online at www.expresssos.com or at branch offices. The Recreation Passport is valid until the next license plate renewal date.

Nonresidents can purchase the Recreation Passport at any state park or recreation area or online at Michigan.gov/DNRLicenses.

Learn more about this creative way of sustaining Michigan's outdoor recreation and natural resources at Michigan.gov/RecreationPassport.

Resident Annual Recreation Passport Fees:

- *Motorized Vehicles: \$12 when purchased with your license plate renewal through the Secretary of State
- *Motorcycles: \$6 when purchased with your license plate renewal through the Secretary of State
- Commercial daily pass: \$17

*****Non-Resident Recreation Passport Fees:***

- Annual nonresident: \$34
- Daily nonresident: \$9
- Towed motor vehicle (only if being used): \$7

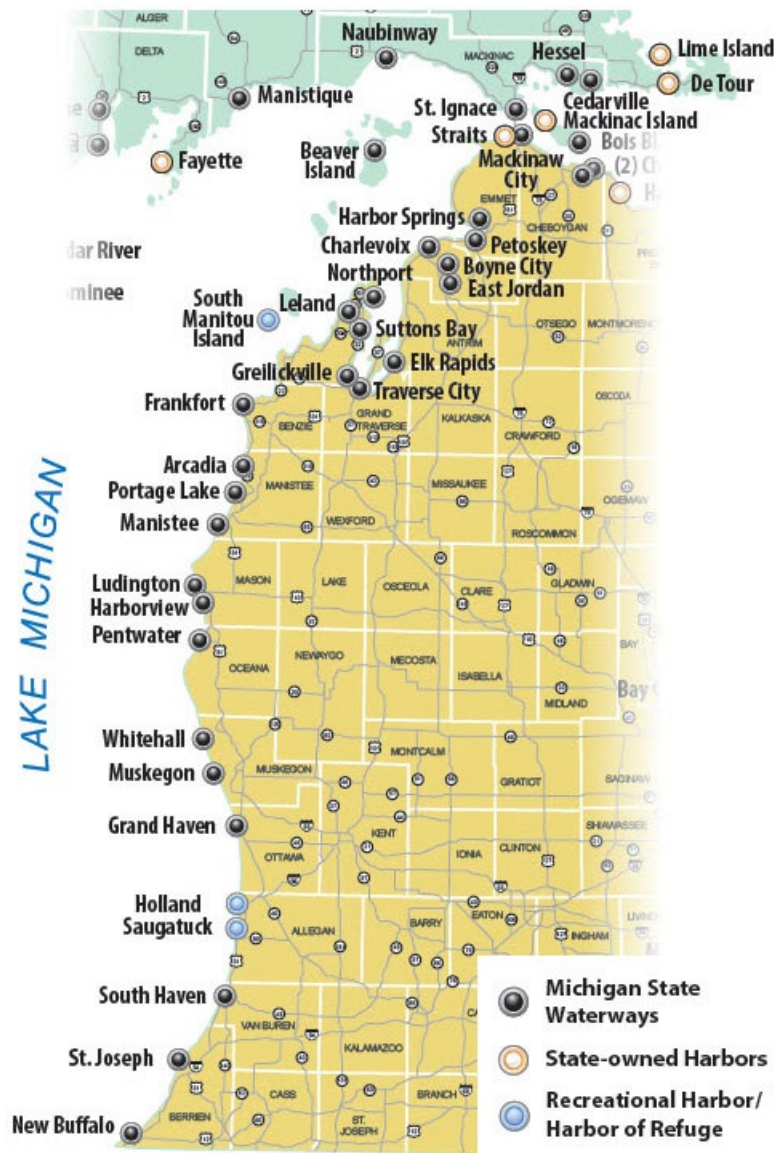
*A \$5 convenience fee will be charged for vehicles/motorcycles when purchased at a park or outside of their annual renewal at SOS

**Fees are subject to change. Above prices are for 2020.

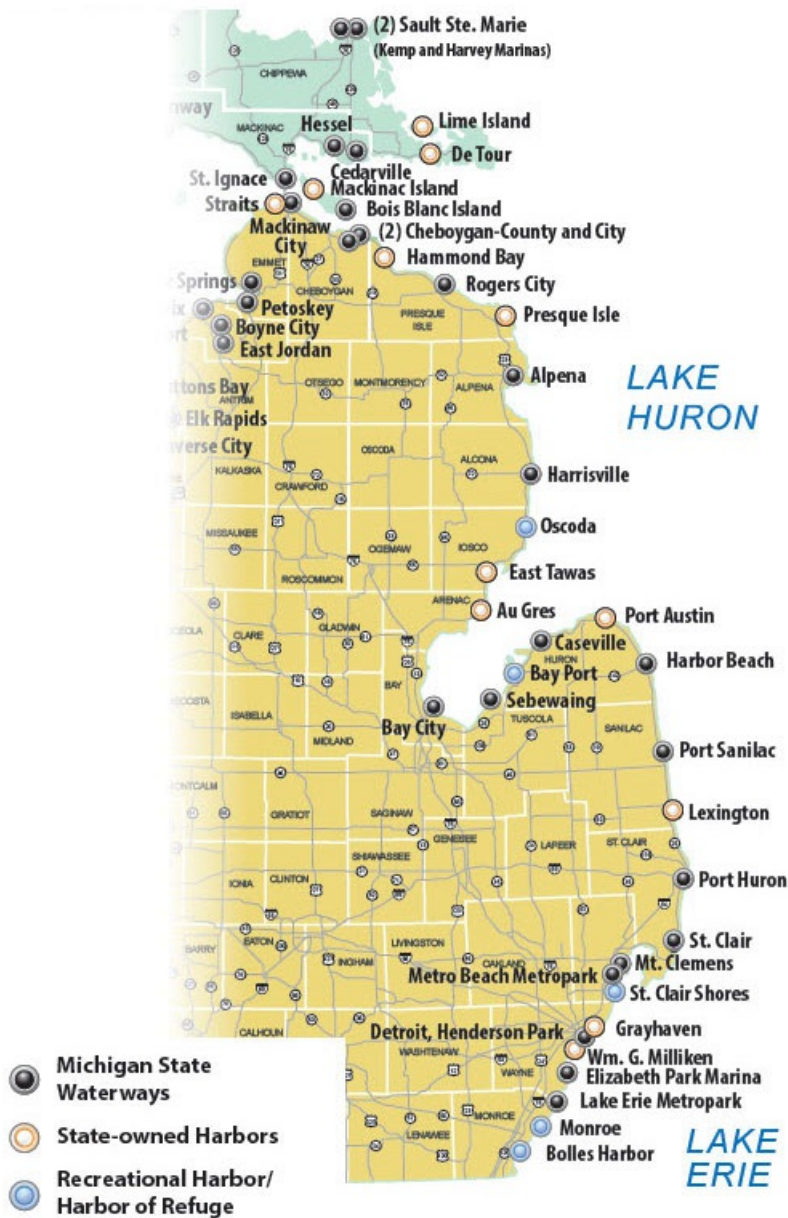
Michigan's Harbors - Upper Peninsula



Michigan's Harbors - West Coast



Michigan's Harbors - East Coast



Bolles Harbor of Refuge

Channel:

41 51' 22" N 83 22' 18" W

Contact Information:

N/A

Radio Channel:

N/A

Dates Open:

N/A

Amenities:

Boat launch



Monroe Harbor of Refuge

Harbor:

41 53' 36" N 83 20' 23" W

Contact Information:

N/A

Radio Channel

N/A

Dates Open:

N/A

Amenities:

None, harbor of refuge only



Lake Erie Metropark Harbor of Refuge

Harbor Reservations:

Please contact harbor for reservation information.
Transient and seasonal slips available.

Channel:

42 03' 11" N 83 10' 45" W

Marina:

42 03' 11" N 83 11' 23" W

Dates Open:

Early April to late October

Contact Information:

Phone: 734-379-5020

Email: le.marina@metroparks.com

Harbormaster: Sue Ashenden

Dates Open:

Early April to late October

Amenities:

- water
- electricity (30-amp)
- modern restroom
- showers
- pump-out
- ice
- recycling
- long-term parking
- day use dockage
- 24-hour security
- playground/park
- grills/picnic tables
- laundry
- marine supplies
- boat launch
- vending machines
- fishing pier
- trash pickup

Notes:

Located at the end of Lee Road, this 140-slip marina is part of the Detroit River International Wildlife Refuge (a designated Audubon Society Important Bird Area) and the place to be for anyone who loves water. In addition to all the natural splendor, visitors can enjoy amenities nearby like the 18-hole golf course, wave pool, nature center and Marshlands Museum.

Wayne County Chamber of Commerce: 734-721-0100



Trenton • Elizabeth Park Marina

Harbor Reservations:

Please contact harbor for reservation information.

Marina:

42 07' 47" N 83 10' 35" W

Contact Information:

Phone: 734-341-8706

Secondary phone: 734-675-8051

Email: tbeaker@trenton-mi.com

Harbormaster: Freeman Floyd

Radio Channel:

16

Dates Open:

Early April to late October

Amenities:

- water
- electricity (50-amp)
- modern restroom
- showers
- pump-out
- ice
- boat launch
- public phone
- dog run
- day use dockage
- playground/park
- grills/picnic tables
- laundry

Notes:

Enjoy 52 slips with eight launch sites at Elizabeth Park Marina

[Southern Wayne County Regional Chamber of Commerce](#): 734-284-6000



Wm. G. Milliken State Park and Harbor

Harbor Reservations:

1-800-447-2757 or www.midnrreservations.com

Marina:

42 19' 55" N 83 01' 31" W

Dates Open:

Early May to early October

Contact Information:

Phone: 313-936-0217

Off-season phone: 734-289-2715



Radio Channel:

9

Amenities:

- water
- electricity (30 & 50-amp)
- restroom
- showers
- ice
- pump-out
- day use dockage
- parking
- 24-hour security
- playground
- laundry

Notes:

William G. Milliken State Park and Harbor, a designated Clean Marina, is Michigan's first urban state park and a showcase of the state's natural resources. The park is now a green oasis located in the heart of downtown Detroit that provides opportunities for picnics, walks, shore fishing and is located near many major attractions, including food and drink establishments. Park revitalization includes a wetland area, new trails and a picturesque river walk.

[Wayne County Chamber of Commerce](#): 734-284-6000

Detroit - Erma Henderson Park

Harbor Reservations:

1-800-447-2757 or www.midnrreservations.com

Transient and seasonal slips available

Marina:

42 21' 07" N 82 59' 05" W

Contact Information:

Phone: 313-628-2034

Off-season phone: 313-628-2034

Radio Channel:

9,16

Dates Open:

Early May to late October

Amenities

- water
- electricity (30 & 50-amp)
- restroom
- showers
- pump-out
- long-term parking
- public phone
- dog run
- day use dockage
- 24-hour security
- playground/park
- laundry



[Detroit Chamber of Commerce](#): 866-627-5463

Grayhaven Mooring Facility

Harbor Reservations:

Please contact harbor for reservation information.
Transient and seasonal slips available.

Channel:

42° 21' 20" N 82° 56' 46" W

Contact Information:

Phone: 313-806-1637
Email: annmperrault@gmail.com
Harbormaster: Kevin Cohan

Radio Channel:

N/A

Dates Open:

Early May to mid-October

Amenities

- electricity (30-amp service)
- floating docks
- day use dockage
- laundry
- parking (day)
- grills/picnic area
- refuse receptacles
- modern restrooms
- showers
- water
- wifi/internet
- pump out
- day use dockage
- 24-hour security
- boaters lounge

Notes:

Grayhaven Mooring Facility offers 78 boat slips and can accommodate boats up to 35-feet. Special amenities offered at the facility include laundry, internet, a boater's lounge and a bonfire area. Not only is it located right next to a park with a playground and picnic shelter, but the park is also close to Belle Isle. Visitors can utilize one of the three nearby kayak rental businesses (with one on site) to explore the waterways of Detroit.



St. Clair Shores Harbor of Refuge

Harbor Reservations:

1-800-447-2757 or www.midnrreservations.com

Transient and seasonal slips available

Harbor:

42° 27' 38" N 82° 52' 27" W

Contact Information:

Phone: 586-445-5270

Off-season phone: 586-445-5350

Radio Channel:

N/A

Dates Open:

Mid-April to Mid-October

Amenities:

- water
- restroom
- showers
- pump-out
- ice
- boat launch
- long-term parking
- public phone
- dog run
- day use dockage
- 24-hour security
- playground/park
- grills/picnic tables



Macomb County Chamber of Commerce: 586-493-7600

Lake St. Clair Metropark

Harbor Reservations:

Please contact harbor for reservation information.
Transient and seasonal slips available

Channel:

42° 33' 55" N 82° 46' 42" W

Marina:

42° 34' 46" N 82° 47' 43" W

Contact Information:

Phone: 586-463-4581
Harbormaster: Gina



Radio Channel:

16

Dates Open:

Mid-April to late October

Amenities:

- water
- electricity (30 & 50-amp)
- modern restrooms
- rustic restrooms
- showers
- pump-out
- ice
- boat launch
- public phone
- dog run
- day use dockage
- 24-hour security
- playground/park
- grills/picnic tables
- fishing pier
- luggage carts
- picnic shelters
- trash pickup
- visitor center
- beach
- gift shop
- horseshoe pits
- parking
- refuse receptacles
- vending machines

Notes:

Our site features the largest transient marina in Lake St. Clair with 95 transient slips. Your entire family will enjoy our vast amenities which include a swimming pool with two water slides, water spray park, adventure golf, 1,000-foot-long groomed sandy beach on lake St. Clair, fishing piers, paved walking paths, nature center and golf course. Visit www.metroparks.com to learn about our exciting events, including our summer concert series.

[Mt. Clemens Chamber of Commerce](http://www.mtcl.com): 810-493-7600

Mt. Clemens Harbor of Refuge

Channel:

42° 35' 38" N 82° 45' 45" W

Marina:

42° 35' 50" N 82° 52' 33" W

Contact Information:

N/A

Radio Channel:

N/A

Dates Open:

N/A



Charles F. Moore Municipal St. Clair Boat Harbor

Harbor Reservations:

Please contact harbor for reservation information.
Transient and seasonal slips available

Marina

42° 49' 12" N 82° 29' 05" W

Contact Information:

Phone: 810-329-4125
Off-season phone: 810-329-7121
Email: scboatharbor@gmail.com
Harbormaster: Dave Shorkey

Radio Channel

9

Dates Open:

Early April to mid-October

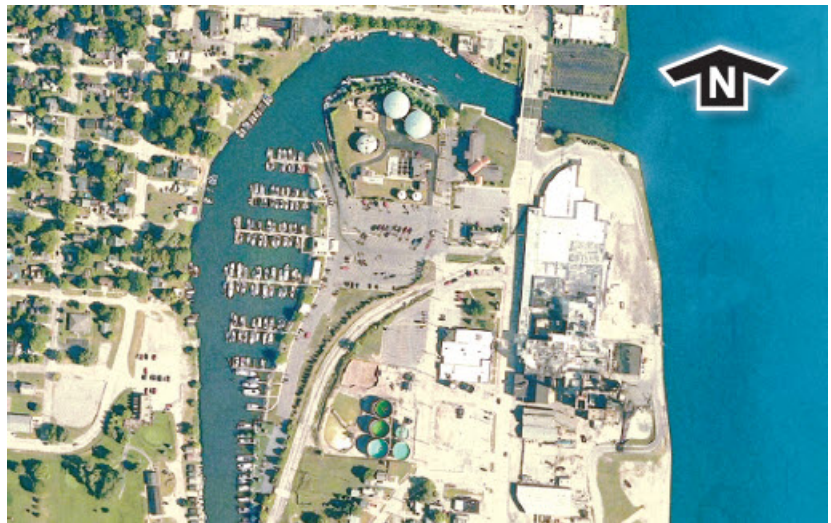
Amenities:

- water
- electricity (30 & 50-amp)
- modern restroom
- showers
- gasoline
- diesel
- pump-out
- ice
- fish cleaning station
- boat launch
- long-term parking
- dock carts
- courtesy vehicle
- dog run
- day use dockage
- 24-hour security
- grills/picnic tables
- vending machines
- fishing pier
- bonfire pit
- picnic shelters
- horseshoes
- recycle bins
- refuse receptacles
- cable TV hook-up
- wifi/internet
- kayak and canoe rental

Notes:

Enjoy your stay at this 120-slip harbor by taking a walk downtown for some shopping and dining. Boat races, Mardi Gras, annual festivals, and the Antique and Classic Boat Show are just a few of the reasons you'll want to come back year after year!

Harbor website: stclairboatharbor.com



[St. Clair Chamber of Commerce](#): 810-329-2962

Port Huron River Street Marina

Harbor Reservations:

1-800-447-2757 or

www.midnrreservations.com

Transient and seasonal slips available.

Channel:

42° 58' 22" N 82° 25' 07" W

Marina:

42° 58' 39" N 82° 25' 46" W

Contact Information:

Phone: 810-984-9746

Off-season phone: 810-982-3990

Harbormaster: Michael Davenport

Radio Channel:

9

Dates Open:

Early May to mid-October

Amenities:

- water
- electricity (30 & 50-amp)
- modern restroom
- showers
- gasoline
- diesel
- pump-out
- ice
- boat launch
- long-term parking
- day use dockage
- playground/park
- wifi/internet
- courtesy vehicle
- dog run
- grills/picnic tables
- laundry
- car rental
- loaner bikes
- dock carts
- trash

Notes:

Port Huron River Street Marina is located on the Black River and offers both transient and seasonal slips. This 130-slip marina is across the street from a playground and offers a pavilion with gas grills and two gas fire pits. Only a few blocks from downtown, you can explore local shops and restaurants or visit the Fort Gratiot Light Station for events such as the Sturgeon Festival.

[Blue Water Area Chamber of Commerce](#): 810-985-7101



Lexington State Harbor

Harbor Reservations:

1-800-447-2757 or
www.midnrreservations.com
Transient slips available

Marina:

43° 15' 50" N 82° 31' 00" W

Contact Information:

Phone: 810-359-5600
Off-season phone: 810-327-6224
Harbormaster: Travas Taylor

Radio Channel:

16, 9

Dates Open:

Early May to late September

Amenities:

- electricity (30 & 50-amp)
- modern restroom
- showers
- gasoline
- diesel
- pump-out
- fish cleaning station
- boat launch
- day use dockage

Notes:

Lexington State Harbor has 108 slips and is on beautiful Lake Huron, approximately 20 miles north of Port Huron. The harbor is within walking distance of the quaint village of Lexington, including public parks, restaurants, a laundromat, theatre, grocery stores and gift shops. The village offers numerous special events including Independence Day fireworks, a street art fair, Margarita Fest, music in the park and more.

Lexington Chamber of Commerce: 810-359-2262



Port Sanilac Harbor

Harbor Reservations:

1-800-447-2757 or

www.midnrreservations.com

Transient and seasonal slips available

Marina:

43° 25' 48" N 82° 32' 04" W

Contact Information:

Phone: 810-622-9610

Off-season phone: 810-710-1253

Email: psharbor1@gmail.com

Harbormaster: Vanessa Stewart

Radio Channel:

9,16

Dates Open:

Early May to late October

Amenities:

- water
- electricity (30 & 50-amp)
- modern restroom
- showers
- gasoline
- diesel
- pump-out
- ice
- fish cleaning station
- boat launch
- boat hoist
- long-term parking
- courtesy vehicle
- dog run
- day use dockage
- playground/park
- grills/picnic tables
- boater's-lounge
- laundry
- security cameras
- marine repairs
- marine supplies
- wifi/internet
- bonfire area
- dock carts
- boaters only picnic shelter
- beach access

Notes:

Port Sanilac Municipal Harbor features 64 boat slips and is just one block from downtown Port Sanilac. Visitors can explore the historical village, Port Sanilac Lighthouse and enjoy local shops and restaurants, all within walking distance of the harbor!

Greater Crosswell-Lexington Chamber of Commerce: 810-359-2262



Harbor Beach Marina

Harbor Reservations:

1-800-447-2757 or

www.midnrreservations.com

Transient and seasonal slips available.

Channel:

43° 50' 48" N 82° 37' 47" W

Marina:

43° 51' 20" N 82° 38' 42" W

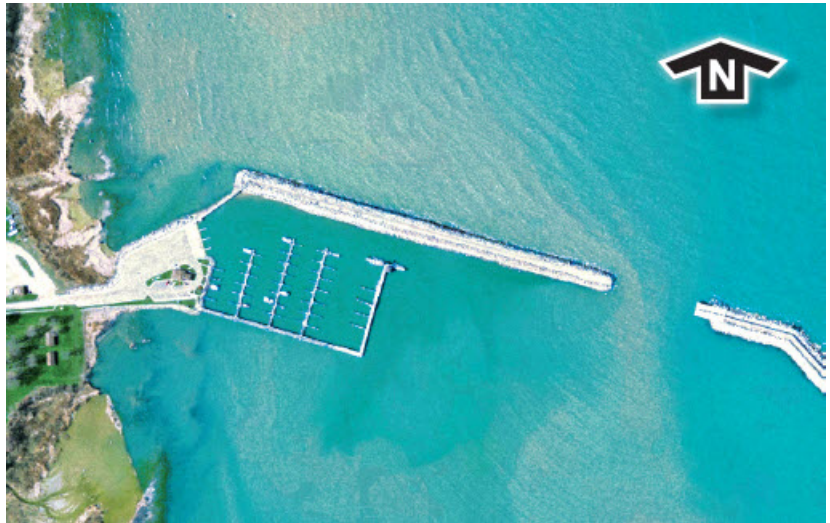
Contact Information:

Phone: 989-479-9707

Off-season phone: 989-479-3363

Email: harborbeachmarina@gmail.com

Harbormaster: Lisa Kozfkay



Radio Channel:

9,16

Dates Open:

Late April to mid-October

Amenities:

- water
- electricity (30 & 50-amp)
- modern restroom
- showers
- gasoline
- diesel
- pump-out
- ice
- fish cleaning station
- boat launch
- long-term parking
- courtesy vehicle
- dog run
- day use dockage
- 24-hour security
- playground/park
- grills/picnic tables
- fishing pier
- laundry
- luggage carts
- beach
- bicycle rental
- marine repairs
- marine supplies
- picnic shelter
- refuse receptacles
- trash pick-up
- wifi/internet

Notes:

Harbor Beach Marina features 114 slips and six boat launches for both seasonal and transient users. In May, the marina hosts the annual Can II Fishing Tournament. Shopping and dining options are within walking distance. There is also a courtesy shuttle that can take you downtown to enjoy activities such as festivals, car and truck shows, and a historic walking tour.

[Harbor Beach Chamber of Commerce](#): 989-479-6477

Port Austin State Harbor

Harbor Reservations:

1-800-447-2757 or

www.midnrreservations.com

Transient and seasonal slips available

Marina:

44° 03' 14" N 82° 59' 37" W

Contact Information:

Phone: 989-738-8712

Off-season phone: 989-856-4411

Radio Channel:

9,16

Dates Open:

Mid-May to mid-September

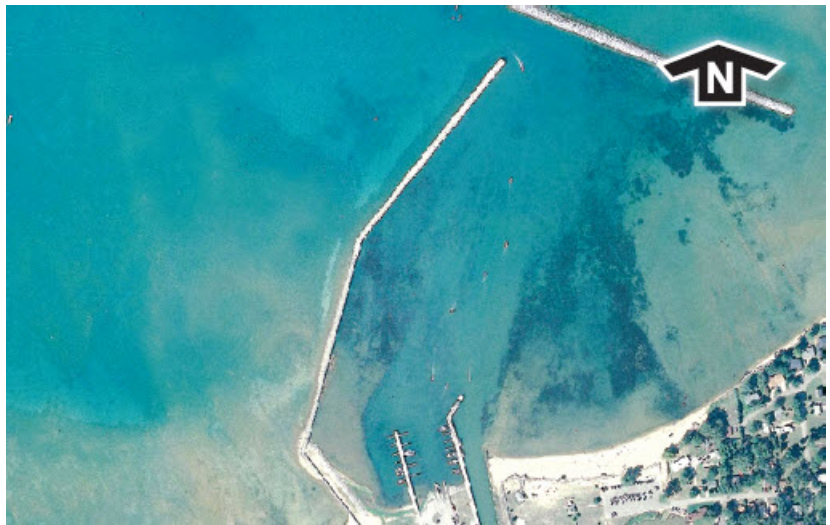
Amenities:

- water
- electricity (50-amp)
- restroom
- showers
- gasoline
- diesel
- pump-out
- ice
- boat launch
- long-term parking
- dog run
- day use dockage
- grills/picnic tables
- laundry
- luggage carts
- marine supplies
- recycle bins
- refuse receptacles
- visitor center
- wifi/internet

Notes:

At Port Austin State Harbor, located at the tip of Michigan's thumb, you can watch both the sunrise and the sunset from the same place. The harbor is the hub of the town and is within walking distance of many great restaurants, shops and beaches. Enjoy great fishing opportunities, many events and take in spectacular Fourth of July fireworks. [View the harbor at anytime on its live web cam.](#)

Greater Port Austin area Chamber of Commerce: 989-738-7600



Caseville Marina

Harbor Reservations:

1-800-447-2757 or

www.midnrreservations.com

Transient and seasonal slips available

Channel:

43° 56' 54" N 83° 17' 15" W

Marina:

43° 56' 34" N 83° 16' 32" W

Contact Information:

Phone: 989-856-4590

Off-season phone: 989-963-0171

Radio Channel:

9,16

Dates Open:

Mid-April to mid-October

Amenities:

- water
- electricity (30 & 50-amp)
- restroom
- showers
- gasoline
- diesel
- pump-out
- ice
- boat launch
- long-term parking
- dog run
- day use dockage
- 24-hour security
- grills/picnic tables
- laundry
- wifi/internet



[Caseville Chamber of Commerce](#): 800-606-1347

Bay Port Harbor of Refuge

Harbor:

43° 51' 17" N 83° 22' 26" W

Contact Information:

N/A

Radio Channel:

N/A

Dates Open:

N/A

Amenities:

None, harbor of refuge only



Sebewaing Marina

Harbor Reservations:

1-800-447-2757 or

www.midnrreservations.com

Transient and seasonal slips available

Marina:

43° 45' 01" N 83° 31' 03" W

Contact Information:

Phone: 989-883-9024

Off-season phone: 989-883-2150

Radio Channel:

68

Dates Open:

Early May to late October

Amenities:

- water
- electricity (20-amp)
- restroom
- showers
- gasoline
- pump-out
- ice
- boat launch
- long-term parking
- dog run
- day use dockage
- playground/park
- grills/picnic tables
- laundry



[Sebewaing Chamber of Commerce](http://SebewaingChamberofCommerce.com): 989-883-2150

Bay City - Liberty Harbor

Harbor Reservations:

1-800-447-2757 or

www.midnrreservations.com

Transient and seasonal slips available

Channel:

43° 40' 48" N 83° 49' 30" W

Contact Information:

Phone: 989-894-2800

Off-season phone: 989-894-8314

Radio Channel:

9

Dates Open:

Early May to mid-October

Amenities:

- water
- electricity (30 & 50-amp)
- restroom
- showers
- gasoline
- diesel
- pump-out
- ice
- boat launch
- hoist
- long-term parking
- dog run
- day use dockage
- 24-hour security
- playground/park
- grills/picnic tables
- luggage carts
- picnic shelters
- recycle bins
- refuse receptacles
- trash pick-up
- wifi/internet



[Bay City Chamber of Commerce](http://BayCityChamberofCommerce.com): 800-806-8333

Au Gres State Harbor

Harbor Reservations:

Au Gres State Harbor is currently closed and has no amenities. All slips are non-reservable and are free on a first-come, first-served basis. If mooring at a slip, please report your stay to the Michigan DNR at 989-362-5041.

Channel:

44° 01' 06" N 83° 39' 55" W

Marina:

44° 02' 50" N 83° 41' 16" W

Contact Informaion:

Phone: 989-876-8729

Off-season phone: 989-684-3020

Radio Channel:

9

Dates Open:

Limited staff working on grounds mid-May to October

Amenities:

None at the present time

Notes:

Further information on the harbor may be obtained by calling the Tawas Point State Park at 989-386-5041.

[Au Gres Chamber of Commerce](#): 989-876-6688



East Tawas State Harbor

Harbor Reservations:

1-800-447-2757 or

www.midnrreservations.com

Transient and seasonal slips available

Marina:

44° 16' 35" N 83° 29' 05" W

Contact Information:

Phone: 989-362-2731

Off-season phone: 989-362-5041

Radio Channel:

9,16

Dates Open:

Early May to late September

Amenities:

- water
- electricity (30 & 50-amp)
- restroom
- showers
- gasoline
- diesel
- pump-out
- ice
- boat launch
- day use dockage
- playground/park
- grills/picnic tables
- fishing pier
- luggage carts
- trash pick-up
- beach
- parking
- refuse receptacles
- wifi/internet

Notes:

East Tawas State Harbor, located in the center of East Tawas, is across the street from downtown shops and restaurants. At the foot of the dock is a 14-mile walking/bike path that winds along the lakeshore south to Alabaster and north to the Tawas Point Lighthouse, located in Tawas Point State Park.

Webcam: www.tawasbayweather.com

[Tawas Area Chamber of Commerce](#): 800-558-2927



Oscoda Harbor of Refuge

Harbor:

44° 24' 33" N 83° 19' 39" W

Contact Information:

N/A

Radio Channel:

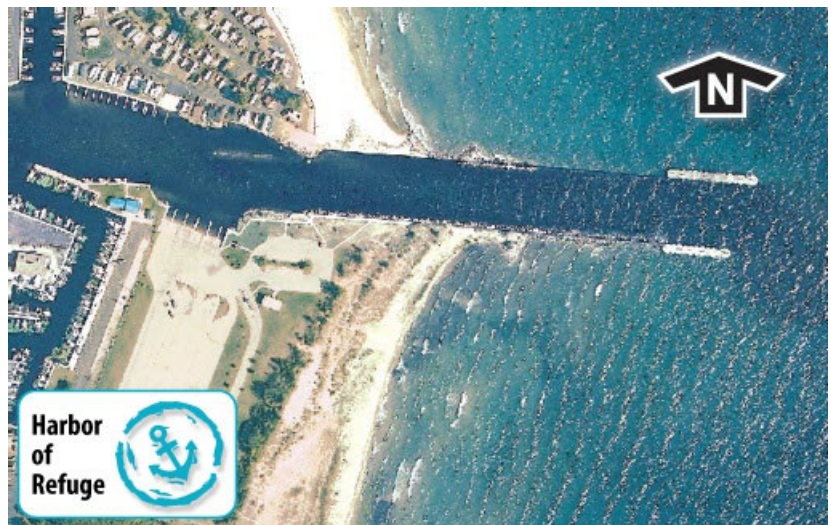
N/A

Dates Open:

N/A

Amenities:

None, harbor of refuge only



[Oscoda-AuSable Chamber of Commerce](#): 989-739-7322

Harrisville Municipal Marina

Harbor Reservations:

Please contact harbor for reservation information.
Transient and seasonal slips available.

Marina:

44° 39' 43" N 83° 16' 50" W

Contact Information:

Phone: 989-724-5242
Harbormaster: Jim Furguson

Radio Channel:

9,16

Dates Open:

Mid-May to mid-October

Amenities:

- water
- electricity (30 & 50-amp)
- modern restroom
- showers
- gasoline
- diesel
- pump-out
- ice
- boat launch
- long-term parking
- courtesy vehicle
- dog run
- day use dockage
- playground/park
- grills/picnic tables
- laundry
- marine supplies
- marine repairs
- beach
- complimentary bicycles
- boaters lounge
- bonfire pit
- gift shop
- horseshoe pits
- luggage carts
- picnic shelters
- refuse receptacles
- trash pickup
- wifi/internet

Notes:

Harrisville Harbor offers the tranquility of a New England-esque harbor with loads of amenities. Enjoy a season of social events for boaters – from dock parties to barbecues, and outdoor concerts on Wednesday nights. The harbor is within close proximity of a quaint downtown providing specialty shops, restaurants and all the necessities for the Huron voyager. Also, stay three nights, receive one free! Come and enjoy a safe haven and the contentment of northern Michigan.



Alpena Municipal Marina

Harbor Reservations:

1-800-447-2757 or

www.midnrreservations.com

Transient and seasonal slips available

Channel:

45° 03' 32" N 83° 25' 17" W

Contact Information:

Phone: 989-356-0551

Off-season phone: 989-345-1761

Email: thunderbayshores@gmail.com

Harbormaster: Donald H. Gilmet



Radio Channel:

9

Dates Open:

Mid-April to November 20th

Amenities:

- water
- electricity (30 & 50-amp)
- restroom
- showers
- gasoline
- diesel
- pump-out
- ice
- fish cleaning station
- boat launch
- hoist
- long-term parking
- public phone
- dog run
- day use dockage
- 24-hour security
- playground/park
- car rental
- marine repairs
- grills/picnic tables
- marine supplies

Notes:

This 135 slip marina has beaches and parks within easy walking distance. Free concerts on Saturday evenings in the summer 500 feet from the marina. Michigan Brown Trout and many other festivals throughout the season. There are also daily glass bottom ship wreck tours and several scuba diving boat operators in the area to take advantage of the numerous well preserved shipwrecks located in Thunder Bay.

[Alpena Area Chamber of Commerce](http://www.alpenaarea.com): 989-354-4181

Presque Isle Marina

Harbor Reservations:

1-800-447-2757 or

www.midnrreservations.com

Transient and seasonal slips available

Marina:

45° 20' 25" N 83° 29' 10" W

Contact Information:

Phone: 989-595-3069

Off-season phone: 231-627-9011

Radio Channel:

9

Dates Open:

Mid-May to late October

Amenities:

- water
- electricity (30 & 50-amp)
- restroom
- showers
- gasoline
- diesel
- pump-out
- boat launch
- dog run
- day use dockage
- grills/picnic tables
- fishing pier
- laundry
- refuse receptacles

Notes:

Presque Isle State Harbor is one of the last state harbors for fuel until Mackinaw City. The Portage Restaurant is a full-service eatery located at the harbor. There are two historic lighthouses on the peninsula and a wooden boat show held in the harbor each year. This harbor is clean marina certified.



Rogers City Marina

Harbor Reservations:

1-800-447-2757 or

www.midnrreservations.com

Transient and seasonal slips available.

Channel:

45° 25' 28" N 83° 48' 24" W

Contact Information:

Phone: 989-734-3808

Off-season phone: 989-255-8671

Email: harbormaster@rogerscity.com

Harbormaster: Wayne Saile

Radio Channel:

9,16

Dates Open:

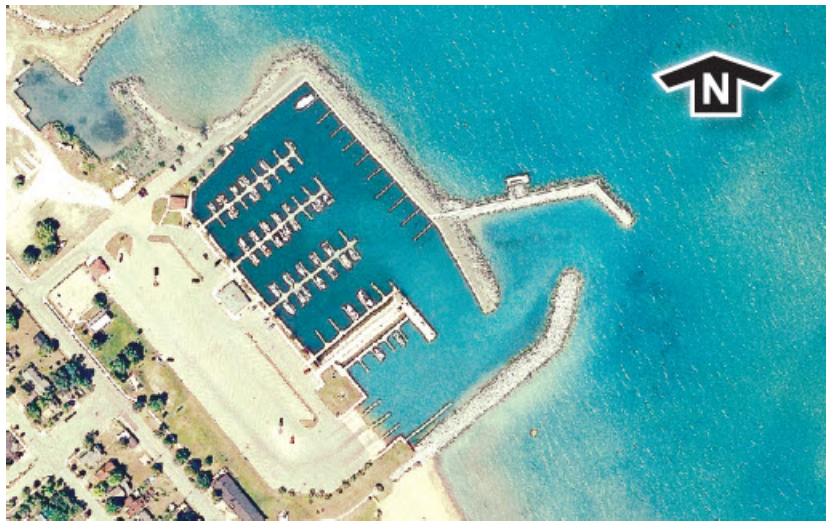
Early May to mid-October

Amenities:

- water
- electricity (30 & 50-amp)
- modern restroom
- showers
- gasoline
- diesel
- pump-out
- ice
- fish cleaning station
- boat launch
- long-term parking
- boat hoist
- dog run
- day use dockage
- playground/park
- grills/picnic tables
- laundry
- bike rental
- beach
- marine repairs
- cable tv hook-up
- fishing pier
- marine supplies
- picnic shelter
- refuse receptacles
- trash pick-up
- dock carts
- wifi/internet

Notes:

Rogers City Marina has a total of 145 slips and hosts several festivals annually. Join us for the Nautical Festival during the first week of August, three of our local fishing tournaments throughout the season, lighthouse festivals or explore the Maritime Museum. Enjoy numerous restaurants in walking distance or our convenient fishing pier.



[Rogers City Area Chamber of Commerce](#): 800-622-4148

(After hours or off-season call 989-351-0034)

Hammond Bay State Harbor

Harbor Reservations:

1-800-447-2757 or
www.midnrreservations.com

Marina:

45° 35' 35" N 84° 09' 48" W

Contact Information:

Phone: 989-938-6291
Off-season phone: 231-627-9011

Radio Channel:

9

Dates Open:

Mid-May to early September

Amenities:

- water
- electricity (30 & 50-amp)
- restroom
- showers
- gasoline
- diesel
- pump-out
- ice
- boat launch
- dog run
- day use dockage
- grills/picnic tables

Notes:

Hammond Bay State Harbor is a Clean Marina certified harbor of refuge. It is a very quiet and remote location with a recently updated comfort building. In this serene atmosphere, it's a great place to relax and catch a glimpse of the beauty of nature and possibly see an eagle up close.

Rogers City Area Chamber of Commerce: 800-622-4148



Cheboygan County Marina

Harbor Reservations:

1-800-447-2757 or

www.midnrreservations.com

Transient and seasonal slips available

Channel:

45° 40' 01" N 84° 27' 22" W

Contact Information:

Phone: 231-627-4944

Email: marina@cheboygancounty.net

Harbormaster: Keith Kneck

Radio Channel:

9,16

Dates Open:

Mid-May to mid-October

Amenities:

- water
- electricity (20, 30 & 50-amp)
- modern restroom
- showers
- gasoline
- diesel
- pump-out
- ice
- fish cleaning station
- boat launch
- long-term parking
- public phone
- dog run
- day use dockage
- 24-hour security
- picnic tables
- cable TV hook-up
- laundry
- wifi/internet

Notes:

The Cheboygan County Marina is a 84 slip marina and is the gateway to Michigan's inland waterway. This marina is nearly 40 miles of incredible boating pleasure. Located on Lake Huron, the Cheboygan County Marina provides state-of-the-art facilities, world-class service and family-friendly services to the boating public.

[Cheboygan Chamber of Commerce](#): 800-968-3302



Cheboygan Municipal Marina

Harbor Reservations:

1-800-447-2757 or
www.midnrreservations.com
Broadside slips available

Channel:

45° 40' 01" N 84° 27' 22" W

Contact Information:

Phone: 231-627-4321
Off-season phone: 231-627-4321

Radio Channel:

9,16

Dates Open:

Early May to mid-October

Amenities:

- water
- electricity (20, 30 & 50-amp)
- restroom
- showers
- day use dockage
- picnic tables/grills
- cable TV hook-up
- boat launch
- parking

[Cheboygan Chamber of Commerce](http://www.cheboyganchamber.com): 800-968-3302



Bois Blanc (Island) Township Harbor

Harbor Reservations:

1-800-447-2757 or

www.midnrreservations.com

Transient and seasonal slips available

Marina:

45° 43' 22" N 84° 27' 00" W

Contact Information:

Phone: 231-634-7354

Off-season phone: 231-634-7354

Radio Channel:

16

Dates Open:

Late May to mid-October

Amenities

- water
- electricity (20, 30 & 50-amp)
- boat launch
- public phone
- dog run
- day use dockage
- grills/picnic tables



[Cheboygan Chamber of Commerce](#): 800-968-3302

Straits State Harbor

Harbor Reservations:

1-800-447-2757 or
www.midnrreservations.com
Transient slips available.

Channel:

45° 46' 42.1" N 84° 43' 11" W

Contact Information:

Phone: 231-436-5326
Off-season phone: 231-627-9011
Harbormaster: Gerald View

Radio Channel:

9/16

Dates Open:

Mid-May to late September

Amenities:

- water
- electricity (30, 50 and 100-amp)
- modern restroom
- gasoline
- diesel
- boat launch
- showers
- pump-out
- fishing pier
- refuse receptacles
- laundry
- dog run
- day use dockage
- grills/picnic tables

Notes:

This 136 slip marina is walking distance from downtown Mackinaw City, which plays host to many events throughout the summer including: craft shows, car shows, fireworks, outdoor music, concerts, a Memorial Day parade and iron workers festival.



Mackinaw City Municipal Marina

Harbor Reservations:

1-800-447-2757 or

www.midnrreservations.com

Transient and seasonal slips available

Marina:

45° 46' 55" N 84° 43' 12" W

Contact Information:

Phone: 231-436-5269

Off-season phone: 231-436-5351

Radio Channel:

9,16

Dates Open:

Mid-May to October 1

Amenities:

- wifi/internet
- pump-out
- gasoline/diesel
- restrooms
- showers
- bicycle rental
- electricity (30, 50 & 100-amp)
- set and floating docks available
- travel lift haul out in marina basin
- marine repairs
- marine supplies
- dog run
- laundry facility
- boater's-lounge
- boater's patio with fireplace
- located in downtown Mackinaw City



[Mackinaw City Marina](http://www.mackinawcitymarina.com): 231-436-5269

Mackinac Island State Harbor

Harbor Reservations:

1-800-447-2757 or

www.midnrreservations.com

Transient and seasonal slips available

Channel:

45° 50' 40" N 84° 36' 42" W

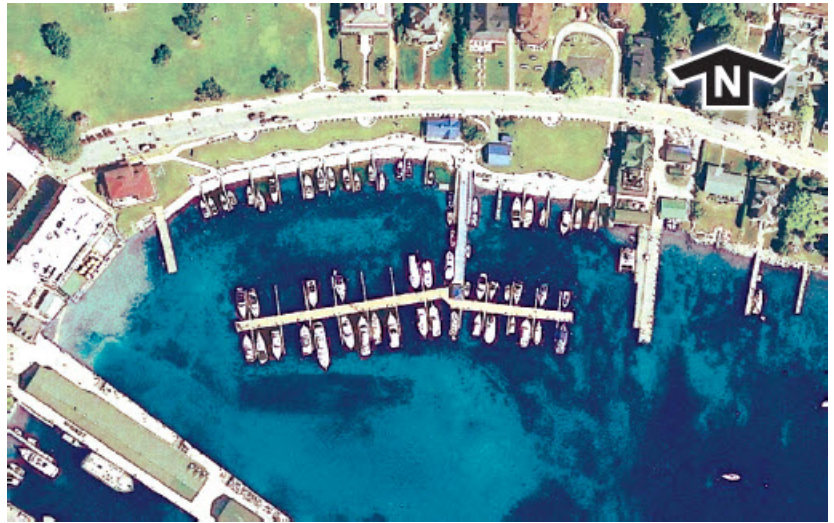
Marina:

45° 50' 57" N 84° 36' 53" W

Contact Information:

Phone: 906-847-3561

Off-season phone: 231-627-9011



Radio Channel:

9

Dates Open:

Mid-May to mid-October

Amenities:

- water
- electricity (30 & 50-amp)
- restroom
- showers
- pump-out
- ice
- dog run
- day use dockage
- grills/picnic tables
- wifi/internet
- refuse receptacles
- recycle bins
- U.S. Customs check-in

Notes:

Mackinac Island State Harbor, Clean Marina certified, is the destination harbor of Northern Michigan. Due to the Port Huron/Chicago sail boat races, reservations are limited from mid-June to late July. It is also a working harbor. It is not completely protected and can be a bit choppy due to ferry boat traffic.

Mackinac Island Chamber of Commerce: 800-454-5227 or 906-847-3783

City of St. Ignace Public Marina

Harbor Reservations:

1-800-447-2757 or

www.midnrreservations.com

Transient and seasonal slips available

Marina:

45° 51' 58" N 84° 43' 06" W

Contact Information:

Phone: 906-643-8131

Off-season phone: 906-643-8797

Email: Stigmarina@lighthouse.net

Harbormaster: Lauren Yoder



Radio Channel:

9,16

Dates Open:

Memorial Day weekend to Mid-October

Amenities:

- water
- electricity (30, 50, 100-amp)
- modern restrooms
- showers
- gasoline
- diesel
- pump-out
- ice
- boat launch
- long-term parking
- public phone
- dog run
- day use dockage
- playground/park
- grills/picnic tables
- laundry
- marine repairs
- marine supplies
- wifi/internet

Notes:

We offer a clean and spacious facility that can accommodate yachts up to 150' in length. Our marina is located in the heart of downtown St. Ignace near shopping, restaurants, boat supplies and groceries. We are open to the public and host events throughout the season. The marina offers deep water for anyone concerned about drafts, which reach about 18 feet. Free activities include music on the bay on Wednesday and Thursday nights, farmers market on Thursdays from 4-7 p.m., and fireworks over the bay on Saturdays (July 4 to Labor Day). We also host Fish Feast, Arts Dockside, Antiques on the Bay, and a summer Sailing Sailstice on June 22 at 11 a.m. hosted by the Yacht Club. There is a total of 136 slips.

[St. Ignace Chamber of Commerce](http://St.IgnaceChamberofCommerce.com): 800-970-8717

Hessel Marina

Harbor Reservations:

1-800-447-2757 or

www.midnrreservations.com

Transient and seasonal slips available

Marina:

46° 00' 05" N 84° 25' 30" W

Contact Information:

Phone: 906-484-3917

Off-season phone: 906-484-2672

Radio Channel:

9, 69

Dates Open:

Late May to mid-September

Amenities:

- water
- electricity (30 - 50-amp)
- restroom
- showers
- pump-out
- boat launch
- public phone
- grills/picnic tables
- laundry
- beach
- dog run
- parking
- wifi/internet

Notes:

"Beautiful Hessel" is located in the west entrance of the Les Cheneaux Island's perfectly protected channels and bays. Hessel Marina has much to offer: Clear, clean, deep water; 24 slips with updated electric; wifi; dog-friendly areas; laundry; pump out; gazebo; courteous knowledgeable service; picturesque scenery; and, as the motto goes, "No hassles in Hessel." Hessel offers dining, shopping, a public swim beach, nearby airport, fishing and numerous special events. We are easy to reach and hard to leave.

[Les Cheneaux Islands Chamber of Commerce](http://www.lescheneauxislandschamberofcommerce.com): 906-484-3935



Cedarville Marina

Harbor Reservations:

1-800-447-2757 or
www.midnrreservations.com

Channel:

45° 03' 32" N 83° 25' 17" W

Contact Information:

Phone: 800-332-9204
Off-season phone: 989-356-0551

Radio Channel:

9

Dates Open:

Mid-April to early November



De Tour State Harbor

Harbor Reservations:

1-800-447-2757 or

www.midnrreservations.com

Transient and seasonal slips available

Marina:

45° 59' 43" N 83° 53' 50" W

Contact Information:

Phone: 906-297-5947

Off-season phone: 906-248-3534

Radio Channel:

16

Dates Open:

Early May to late September

Amenities:

- water
- electricity (30 & 50-amp)
- restroom
- showers
- gasoline
- diesel
- pump-out
- ice
- boat launch
- dog run
- day use dockage
- grills/picnic tables
- fishing pier
- laundry
- luggage carts

Notes:

DeTour State Harbor, located in the town of DeTour Village, is the gateway to both the gorgeous Canadian North Channel and spectacular Lake Superior.

[DeTour Chamber of Commerce](#): 906-297-5987



Lime Island State Harbor

Harbor Reservations:

1-800-447-2757 or
www.midnrreservations.com

Channel:

46° 05' 10" N 84° 0' 45" W

Contact Information:

Phone: 906-643-8620

Radio Channel:

9

Dates Open:

N/A

Amenities:

- day use dockage
- picnic area
- primitive restrooms

Notes:

Lime Island State Recreation Area is a 980-acre wooded paradise located in the St. Mary's River. Lime Island received its name from limestone deposits that were dug from the island and processed into cement as early as the 1730s. Today, the island is known for hiking, excellent walleye and herring fishing and relaxation while watching Great Lakes freighters pass by.



George Kemp Downtown Marina

Harbor Reservations:

1-800-447-2757 or

www.midnrreservations.com

Transient and seasonal slips available

Marina:

46° 29' 57" N 84° 20' 21" W

Contact Information:

Phone: 906-635-7670

Off-season phone: 906-440-2741

Email: Harbormaster@kempmarina.com

Harbormaster: Josh Teneyck



Radio Channel:

9

Dates Open:

Mid-May to mid-October

Amenities:

- water
- electricity (30 & 50-amp)
- modern restroom
- showers
- gasoline
- diesel
- pump-out
- ice
- dog run
- public phone
- loaner bikes
- day use dockage
- 24-hour security
- grills/picnic tables
- laundry
- wifi/internet

Notes:

This 58 slip marina has courtesy Weber gas grills on top of other amenities listed.

[Sault Ste. Marie Chamber of Commerce](#): 906-632-3301

Charles T. Harvey Marina

Harbor Reservations:

Please contact harbor for reservation information.

Only seasonal slips available.

Marina:

46° 28' 15" N 84° 18' 00" W

Contact Information:

Phone: 906-632-6963

Dates Open:

Mid-May to mid-October



Amenities:

- water
- electricity (30 & 50-amp)
- modern restroom
- showers
- pump-out
- boat launch
- dog run
- grills/picnic tables
- parking
- trash

Notes:

This 31 slip marina has a kayak launch in addition to other amenities listed.

[Sault Ste. Marie Chamber of Commerce](#): 906-632-3301

Beaver Island Municipal Marina

Harbor Reservations:

1-800-447-2757 or

www.midnrreservations.com

Transient and seasonal slips available

Marina:

45° 44' 48" N 85° 31' 08" W

Contact Information:

Phone: 231-448-2252

Radio Channel:

16, 9

Dates Open:

May 15 - October 15

Amenities:

- water
- electricity (30 & 50-amp)
- restroom
- showers
- pump-out
- ice
- boat launch
- public phone
- dog run
- day use dockage
- grills/picnic tables
- laundry
- car rental
- beach
- boater's-lounge
- picnic shelter
- playground
- wifi/internet
- visitor center
- refuse receptacle

[Beaver Island Chamber of Commerce](#): 231-448-2505



City of Harbor Springs Municipal Marina

Harbor Reservations:

Please contact harbor for reservation information.

Marina:

45° 25' 38" N 84° 59' 15" W

Contact Information:

Phone: 231-526-5355

Off-season phone: 231-526-2104

Email:

harbormaster@cityofharborsprings.com

Harbormaster: Michael Johnson



Radio Channel:

16

Dates Open:

Mid-May to mid-October

Amenities:

- water
- electricity (30 & 50-amp)
- modern restroom
- showers
- gasoline
- diesel
- pump-out
- ice
- hoist
- long-term parking
- public phone
- courtesy vehicle
- dog run
- day use dockage
- grills/picnic tables
- cable TV hook-up
- laundry
- marine repairs
- marine supplies
- beach
- bicycle rental
- boat launch
- luggage carts
- recycle bins
- refuse receptacles
- vending machines
- wifi/internet
- 24-hour security
- trash

Notes:

Offering the deepest anchorage in the northern Great Lakes, the Harbor Springs Municipal Marina is also in walking distance of downtown dining and shopping. In fact, it's in close proximity to some of the best restaurants in Michigan. Harbor Springs Municipal Marina has a total of 53 slips.

Petoskey Municipal Marina

Harbor Reservations:

1-800-447-2757 or

www.midnrreservations.com

Transient and seasonal slips available

Marina:

45° 22' 52" N 84° 57' 40" W

Contact Information:

Phone: 231-347-6691

Off-season phone: 231-347-2500

Email: marina@petoskey.us

Harbormaster: Mark Lennemann



Radio Channel:

16

Dates Open:

Early May to early October

Amenities:

- water
- electricity (30 & 50-amp)
- modern restroom
- showers
- gasoline
- diesel
- pump-out
- ice
- boat launch
- long-term parking
- public phone
- courtesy vehicle
- dog run
- day use dockage
- 24-hour security
- grills/picnic tables
- laundry
- car rental
- marine supplies
- wifi/internet
- courtesy bicycles
- free coffee

Notes:

Welcome to the recently expanded and renovated 144-slip marina in the heart of Bay Front Park. Petoskey Marina is a certified Clean Marina. The historic Gaslight District of downtown Petoskey is just a few steps away. Enjoy fine and casual dining, extensive shopping, outstanding recreational opportunities and uninterrupted vistas of Little Traverse Bay's natural beauty. Visit, call or e-mail for more information regarding making Petoskey your port of call.

[Petoskey Regional Chamber of Commerce](http://www.petoskeychamber.com): 231-347-4150

Boyne City - F. Grant Moore Municipal Marina

Harbor Reservations:

Please contact harbor for reservation information.
Transient and seasonal slips available.

Marina:

45° 12' 55" N 85° 01' 10" W

Contact Information:

Phone: 231-582-7361
Email: marina@boynecity.com
Harbormaster: Barb Brooks

Radio Channel:

16

Dates Open:

Mid-May to mid-October

Amenities:

- water
- electricity (30-amp)
- modern restroom
- showers
- ice
- fish cleaning station
- boat launch
- long-term parking
- public phone
- courtesy vehicle
- dog run
- day use dockage
- playground/park
- grills/picnic tables
- wifi/internet
- courtesy bicycles
- bonfire pit
- visitor center
- refuse receptacles
- fishing pier
- luggage carts
- picnic shelter
- trash pickup
- dock carts

Notes:

Boyne City F. Grant Moore Municipal Marina has 44 slips and multiple amenities for boaters. The marina is one block from downtown and includes a fishing pier, two boat launches and trailer storage off-site.

[Boyne City Chamber of Commerce](#): 231-582-6222



Charlevoix City Marina

Harbor Reservations:

1-800-447-2757 or

www.midnrreservations.com

Transient and seasonal slips available

Channel:

45° 19' 17" N 85° 15' 58" W

Marina:

45° 19' 00" N 85° 15' 23" W

Phone:

Phone: 231-547-3272

Off-season phone: 231-547-3270

Radio Channel:

9

Dates Open:

Early May to late September

Amenities:

- water
- electricity (30 & 50-amp)
- restroom
- showers
- gasoline
- diesel
- pump-out
- ice
- long-term parking
- public phone
- courtesy vehicle
- beach
- bicycle rental
- boat launch
- boater's-lounge
- fishing pier
- dog run
- day use dockage
- 24-hour security
- grills/picnic tables
- cable t.v. hook-up
- laundry
- car rental
- marine repairs
- wifi/internet
- courtesy bicycles
- gift shop
- luggage carts
- recycle bins
- visitor center



[Charlevoix Area Chamber of Commerce](#): 231-547-2101

East Jordan City Marina

Harbor Reservations:

1-800-447-2757 or

www.midnrreservations.com

Transient and seasonal slips available

Channel:

45° 19' 17" N 85° 15' 58" W

Marina:

45° 09' 22" N 85° 07' 52" W

Contact Information:

Phone: 231-536-2166

Off-season phone: 231-536-3381



Radio Channel:

9

Dates Open:

Mid-May to mid-October

Amenities:

- water
- electricity (30-amp)
- restroom
- showers
- gasoline
- pump-out
- ice
- boat launch
- day use dockage
- playground/park
- grills/picnic tables
- cable TV hook-up
- fishing pier
- parking
- trash pick-up
- luggage carts
- recycle bins
- wifi/internet

Notes:

The fuel dock serves non-ethanol midgrade and premium with Valvtect additives.

[East Jordan Chamber of Commerce](http://www.eastjordanchamber.com): 231-536-7351

Elk Rapids - Edward C. Grace Memorial Harbor

Harbor Reservations:

Please contact harbor for reservation information.

Marina:

44° 54' 09" N 85° 25' 04" W

Contact Information:

Phone: 231-264-8174

Off-season phone: 231-264-9274

Email: harbor@elkrapids.org

Harbormaster: Mike Singleton

Fax:

231-264-6337

Radio Channels:

9,16, 73

Dates Open:

Mid-May to mid-October

Amenities:

- water
- electricity (30, 50, 100 amp)
- cable TV
- wifi
- modern restrooms
- showers
- ethanol free gasoline with valvtect
- premium diesel with valvtect
- long term parking
- four station pump-out
- ice
- laundry
- four lane boat launch
- courtesy shuttle service
- adjacent public beaches
- grills
- picnic areas
- dog run
- day use dockage
- 24-hour security
- playground/park
- dock carts
- trash
- boaters lounge
- vending machines

Notes:

Edward C. Grace Memorial Harbor is a 265-slip marina and boat launch on East Grand Traverse Bay with modern amenities, barbecue, picnic areas and much more. Walk, bike or drive to downtown Elk Rapids and enjoy fine dining, art galleries, breweries, farmers markets and local shops.



Traverse City - Duncan L. Clinch Marina

Harbor Reservations:

1-800-447-2757 or

www.midnrreservations.com

Transient and seasonal slips available

Marina:

44° 46' 05" N 85° 37' 20" W

Contact Information:

Phone: 231-922-4903

Off-season Phone: 231- 922-4906

Radio Channel:

9,16

Dates Open:

Mid-May to late October

Amenities:

- water
- electricity (30 & 50-amp)
- restroom
- showers
- gasoline
- diesel
- pump-out
- ice
- boat launch
- long-term parking
- dog run
- day use dockage
- 24-hour security
- playground/park
- grills/picnic tables
- cable TV hook-up
- laundry
- wifi/internet
- water
- beach
- boater's-lounge
- visitor center
- luggage carts
- picnic shelter
- refuse receptacles
- trash pickups



[Traverse City Chamber of Commerce](http://TraverseCityChamberofCommerce.com): 231-947-5075

Greilickville - Elmwood Twp. Marina

Harbor Reservations:

1-800-447-2757 or

www.midnrreservations.com

Transient and seasonal slips available.

Marina:

44° 47' 17" N 85° 38' 00" W

Contact Information:

Phone: 231-946-5463

Email: elmwoodmarina@gmail.com

Harbormaster: Pete Moon

Radio Channel:

16

Dates Open:

Early May to late October

Amenities:

- water
- electricity (30-amp)
- modern restroom
- showers
- pump-out
- ice
- boat launch
- dog run
- day use dockage
- playground/park
- grills/picnic tables
- beach
- laundry
- luggage carts
- picnic shelter
- wifi/internet
- refuse receptacles
- vending machines

Notes:

The Elmwood Township Marina is located on the West Arm Grand Traverse Bay, along Route M-22, a designated Pure Michigan Byway and Scenic Heritage Route. There is a total of 176 slips at the Elmwood Township Marina. Just one mile from town, boaters can walk, bike or drive to local restaurants, TART trails, or one of the famous wineries on the Grand Traverse Bay throughout the Leelanau Peninsula. Elmwood Township Marina provides many amenities and makes a great home base for enjoying festivals, wine tours, and lake shore or dune adventures in the region.

[Traverse City Chamber of Commerce](#): 231-947-5075



Suttons Bay Marina

Harbor Reservations:

1-800-447-2757 or

www.midnrreservations.com

Transient and seasonal slips available

Channel:

44° 58' 32" N 85° 38' 43" W

Contact Inforamtion:

Phone: 231-271-6703

Off-season phone: 231-271-3051

Radio Channel:

16

Dates Open:

Mid-May to mid-October

Amenities:

- water
- electricity (30-amp)
- restroom
- showers
- gasoline
- pump-out
- ice
- boat launch
- long-term parking
- public phone
- dog run
- day use dockage
- playground/park
- grills/picnic tables
- wifi/internet



[Suttons Bay Area Chamber of Commerce](#): 231-271-5077

Northport - G. Marsten Dame Marina

Harbor Reservations:

1-800-447-2757 or

www.midnrreservations.com

Transient and seasonal slips available

Marina:

45° 07' 48" N 85° 36' 38" W

Contact Information:

Phone: 231-386-5411

Off-season phone: 231-386-5182 x11

Email: marina@villageofnorthport.net

Harbormaster: Susan Holtz

Radio Channel:

16, 71

Dates Open:

Mid-May to mid-October

Amenities:

- water
- electricity (30 & 50-amp)
- restroom
- showers
- gasoline: ethanol free gas with valvtect
- diesel: premium diesel with valvtect
- pump-out
- ice
- boat launch
- long-term parking
- dog run
- day use dockage
- playground/park
- grills/picnic tables
- laundry
- car rental
- dock carts
- wifi/internet
- trash
- recycling
- boaters lounge
- visitors center
- bonfire area
- marine repairs (about one mile away)
- marine supplies (about one mile away)

Notes:

Northport Harbor is a beautiful marina at the tip of the Leelanau Peninsula on the Grand Traverse Bay with 131 slips. Walking distance to shops and restaurants, two beautiful beaches, Leelanau State Park and Lighthouse, library, grocery store and a bank. Northport Creek Golf Course is just a mile away. On Fridays there is our farmers market from 9 a.m.-1 p.m., and at night is the ever fun music in the park from 7-9 p.m. at the pavillion at Marina Park. Marine supplies and repairs are approximately one mile down the road at Northport Bay Boat Yard. Northport Harbor is a Certified Clean Marina.



Website: <https://villageofnorthport.net/marina/>
Leelanau Township Chamber of Commerce: 231-386-9809

Leland Township Marina

Harbor Reservations:

Please contact harbor for reservation information.

Transient slips available.

Channel:

45° 01' 26" N 85° 45' 51" W

Contact Information:

Phone: 231-256-9132

Email: lelandharbor@gmail.com

Harbormaster: Russell Dzuba

Radio Channel:

9,16, 68

Dates Open:

Late April to late October

Amenities:

- water
- electricity (30 & 50-amp)
- modern restroom
- showers
- gasoline
- diesel
- pump-out
- ice
- beach
- boat launch
- parking
- dog run
- day use dockage
- playground/park
- grills/picnic tables
- marine repairs
- laundry
- wifi/internet
- fishing pier
- gift shops
- recycle bins
- refuse receptacles
- trash pickup
- bicycle rental
- boater's-lounge
- luggage carts

Notes:

Leland Township Marina is situated within Leland's Historic Fishtown District and has 63 slips. The porches on site overlook the Manitou passage and Manitou Islands. Both wet and dry goods are only a block away. Local rental vehicles, bikes or kayaks make great ways to explore the Leelanau Peninsula, with the marina as a great home base.

[Leland Michigan Chamber of Commerce](#): 231-256-0076



South Manitou Island Harbor of Refuge

Harbor:

45° 01' 31" N 86° 05' 30" W

Contact Information:

N/A

Radio Channel:

N/A

Dates Open:

N/A

Amenities:

None - harbor of refuge only

[Leelanau Peninsula Chamber of Commerce](#): 231-271-9895



Frankfort Municipal Marina

Harbor Reservations:

Please contact harbor for reservation information.

Channel:

44° 37' 49" N 86° 15' 11" W

Marina:

44° 37' 53" N 86° 14' 08" W

Contact Information:

Phone: 231-352-9051

Off-season phone: 231-352-7117

Radio Channel:

9,16

Dates Open:

Late April to mid-October

Amenities:

- water
- electricity (30 & 50-amp)
- restroom
- showers
- gasoline
- diesel
- pump-out
- ice
- boat launch
- dog run
- day use dockage
- playground/park
- grills/picnic tables
- marine supplies



[Frankfort-Elberta Chamber of Commerce](#): 231-352-7251

Arcadia Veterans Memorial Marina

Harbor Reservations:

1-800-447-2757 or

www.midnrreservations.com

Transient and seasonal slips available

Channel:

44° 29' 01" N 86° 15' 04" W

Marina:

44° 29' 27" N 86° 14' 21" W

Phone:

231-889-9653

Off-season phone: 231-889-4463

Radio Channel:

9

Dates Open:

Early May to late September

Amenities:

- water
- electricity (30 & 50-amp)
- restroom
- showers
- gasoline
- diesel
- pump-out
- ice
- boat launch
- hoist
- long-term parking
- dog run
- day use dockage
- 24-hour security
- playground/park
- grills/picnic tables
- laundry
- wifi/internet

[Manistee Area Chamber of Commerce](#): 800-288-2286



Portage Lake Harbor of Refuge

Harbor:

44° 21' 32" N 86° 15' 27" W

Contact Information:

231-723-7412

Radio Channel:

N/A

Dates Open:

N/A

Amenities:

None - harbor of refuge only

[Manistee Area Chamber of Commerce](#): 800-288-2286



Manistee Municipal Marina

Harbor Reservations:

1-800-447-2757 or

www.midnrreservations.com

Transient and seasonal slips available.

Channel:

44° 15' 08" N 86° 20' 58" W

Marina:

44° 14' 54" N 86° 19' 37" W

Contact Information:

Phone: 231-723-1552

Harbormaster: Tim Kozal

Radio Channel:

9,16

Dates Open:

Mid-May to end of September

Amenities:

- water
- electricity (30 & 50-amp)
- modern restroom
- showers
- gasoline
- diesel
- pump-out
- ice
- dog run
- shuffleboard
- grills/picnic tables
- laundry
- wifi/internet
- boaters lounge
- trash

Notes:

Total number of slips: 37

[Manistee Area Chamber of Commerce](#): 800-288-2286



Ludington Municipal Marina

Harbor Reservations:

1-800-447-2757 or

www.midnrreservations.com

Transient and seasonal slips available

Channel:

43° 57' 10" N 86° 28' 14" W

Marina:

43° 57' 08" N 86° 27' 20" W

Contact Information:

Phone: 231-843-9611

Off-season phone: 231-845-6237

Radio Channel:

9,16

Dates Open:

April 15 to October 15

Amenities:

- water
- electricity (30 & 50-amp)
- restroom
- showers
- gasoline
- diesel
- pump-out
- ice
- fish cleaning station
- boat launch
- long-term parking
- public phone
- dog run
- day use dockage
- playground/park
- grills/picnic tables
- cable TV hook-up
- laundry
- beach
- boater's-lounge
- luggage carts
- security cameras
- trash pick-up
- vending machines
- wifi/internet

Notes:

Located only two blocks from downtown shopping and restaurants, Ludington Municipal Marina has something for everyone. Please visit our website at www.ludingtonmarina.com for information and upcoming marina and community events.



Ludington Harbor View Marina

Harbor Reservations:

1-800-447-2757 or

www.midnrrreservations.com

Transient and seasonal slips available

Channel:

43° 56' 57" N 86° 27' 04" W

Contact Information:

Phone: 231-843-6032

Off-season phone: 231-843-6032

Radio Channel:

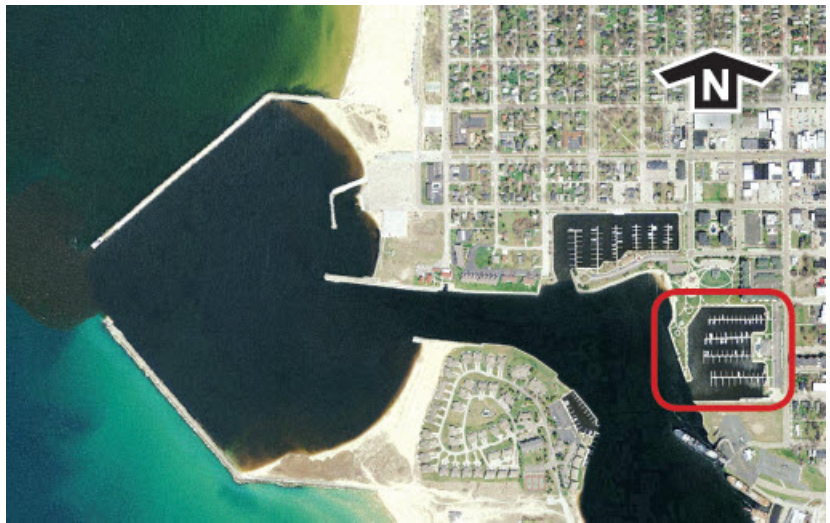
9,16

Dates Open:

Mid-April to mid-October

Amenities:

- water
- electricity (20, 30 & 50-amp)
- restroom
- showers
- gasoline
- diesel
- pump-out
- ice
- fish cleaning station
- boat launch
- long-term parking
- public phone
- courtesy vehicle
- dog run
- 24-hour security
- playground/park
- grills/picnic tables
- cable TV hook-up
- laundry
- marine supplies
- wifi/internet



[Ludington Chamber of Commerce](#): 231-845-0324

Pentwater Municipal Marina

Harbor Reservations:

1-800-447-2757 or

www.midnrreservations.com

Transient and seasonal slips available

Channel:

43° 46' 57" N 86° 26' 39" W

Marina:

43° 46' 37" N 86° 26' 02" W

Contact Information:

Phone: 231-869-7028

Off-season phone: 231-869-8301

Radio Channel:

9

Dates Open:

Early May to mid-October

Amenities:

- water
- electricity (30-amp)
- restroom
- showers
- pump-out
- ice
- fish cleaning station
- boat launch
- dog run
- day use dockage
- grills/picnic tables
- wifi/internet



[Pentwater Chamber of Commerce](http://www.pentwaterchamber.com): 231-869-4150

Whitehall Municipal Marina

Harbor Reservations:

1-800-447-2757 or

www.midnrreservations.com

Transient and seasonal slips available.

Channel:

43° 22' 30" N 86° 25' 51" W

Marina:

43° 24' 43" N 86° 21' 16" W

Contact Information:

Phone: 231-894-9689

Off-season phone: 231-894-4048

Email: maindesk@cityofwhitehall.org

Harbormaster: Travis Bolles



Radio Channel:

9

Dates Open:

Memorial Day to Labor Day

Amenities:

- water
- electricity (30 & 50-amp)
- modern restroom
- showers
- gasoline
- diesel
- pump-out
- ice
- laundry
- dog run
- day use dockage
- playground/park
- grills/picnic tables
- wifi/internet
- trash
- vending machines
- visitors center

Notes:

The White Lake Municipal Marina is one of west Michigan's best kept secrets. The deep channel in from Lake Michigan beckons boaters to this pristine, 50-slip marina nestled in the northeast end of beautiful White Lake. The marina is surrounded by a lush park setting with a pavilion, gazebo, accessible play structure, and bike trail, and is a short walk to quaint shops, restaurants and a summer theatre. The annual arts and crafts fair, a classic car and wooden boat show, and annual 4th of July parade complete with fireworks over White Lake are great family friendly events within walking distance of the marina.

[White Lake Area Chamber of Commerce](http://www.whitehallchamber.com): 231-893-4585

Muskegon - Hartshorn Marina

Harbor Reservations:

1-800-447-2757 or

www.midnrreservations.com

Transient and seasonal slips available

Channel:

43° 13' 28" N 86° 20' 54" W

Marina:

43° 13' 57" N 86° 15' 54" W

Contact Information:

Phone: 231-724-6785

Off-season phone: 231-724-4100

Radio Channel:

9, 69

Dates Open:

Mid-April to mid-October

Amenities:

- water
- electricity (20, 30 & 50-amp)
- restroom
- showers
- ice
- boat launch
- long-term parking
- public phone
- dog run
- day use dockage
- grills/picnic tables
- wifi/internet



Muskegon County Chamber of Commerce: 231-722-3751

Grand Haven Municipal Marina

Harbor Reservations:

1-800-447-2757 or

www.midnrreservations.com

Transient and seasonal slips available.

Channel:

43° 03' 27" N 86° 15' 26" W

Marina:

43° 03' 58" N 86° 15' 26" W

Contact Information:

Phone: 616-847-3478

Off-season phone: 616-847-4889

Email: ghcitymarina@grandhaven.org

Harbormaster: Jeff Hawke

Radio Channel:

9

Dates Open:

Mid-May to mid-October

Amenities:

- water
- electricity (30 & 50-amp)
- modern restroom
- showers
- ice
- fish cleaning station
- boat launch
- day use dockage
- playground/park
- grills/picnic tables
- laundry
- wifi/internet
- fishing pier
- parking
- picnic shelter
- recycle bins
- refuse receptacles
- trash pickup
- vending machines
- splash pad
- dog's welcome

Notes:

Located in the heart of Grand Haven along the waterfront, the Grand Haven Municipal Marina is within walking distance of restaurants, bars, shopping and a stunning Lake Michigan beach. The picturesque boardwalk provides a beautiful landscape for walkers, runners and cyclists. While visiting the 68-slip marina, you may also want to enjoy the splash pad and mini-golf activities located here.

Many concerts and special events are held in the recently renovated Lynne Sherwood Waterfront Stadium adjacent to the marina. You will have the opportunity to hear some talented, local, regional, national and international artists without having



to leave your boat!

Charter fishing excursions are also available.

[Grand Haven Chamber of Commerce](#): 800-303-4097

Holland Harbor of Refuge

Harbor:

42° 46' 32" N 86° 11' 39" W

Contact Information:

N/A

Radio Channel:

N/A

Dates Open:

N/A

Amenities:

None - harbor of refuge only

Notes:

A harbor of refuge provides an area where boaters may seek refuge from inclement weather. Some of these harbors are just natural inlets and only provide a spot to moor until weather conditions improve.

[Holland Area Chamber of Commerce](#): 616-392-2389



Saugatuck Harbor of Refuge

Harbor:

42° 40' 32" N 86° 12' 22" W

Contact Information:

N/A

Radio Channel:

N/A

Dates Open:

N/A

Amenities:

None - harbor of refuge only

Notes:

A harbor of refuge provides with an area where boaters may seek refuge from inclement weather. Some of these harbors are just natural inlets and only provide a spot to moor until weather conditions improve.

[Saugatuck/Douglas Chamber of Commerce](#): 269-857-1701



South Haven Municipal Marina

Harbor Reservations:

1-800-447-2757 or

www.midnrreservations.com

Transient and seasonal slips available

Channel:

42° 24' 05" N 86° 17' 22" W

Marina:

42° 24' 15" N 86° 16' 37" W

Contact Information:

Phone: 269-637-3171

Off-season phone: 269-637-0771



Radio Channel:

9

Dates Open:

Mid-April to mid-October

Amenities:

- water
- electricity (30 & 50-amp)
- restroom
- showers
- pump-out
- ice
- fish cleaning station
- boat launch
- long-term parking
- day use dockage
- 24-hour security
- grills/picnic tables
- laundry
- beach bicycle rental
- boater's-lounge
- fishing pier
- picnic shelter
- refuse receptacle
- wifi/internet

Notes:

South Haven Municipal Marina is within easy walking distance of downtown South Haven with a great selection of restaurants, shops and things to do. Walk the harborwalk surrounding historic South haven Harbor, view the tall ship and visit the city's public beaches, some of the best sand beaches in the world. South Haven Municipal Marina puts you in the middle of the action.

[South Haven Area Chamber of Commerce](http://SouthHavenAreaChamberofCommerce.com): 269-637-5171

Saint Joseph - West Basin Marina

Harbor Reservations:

1-800-447-2757 or

www.midnrreservations.com

Transient and seasonal slips available.

Channel:

42° 06' 58" N 86° 29' 44" W

Marina:

42° 06' 46" N 86° 29' 03" W

Contact Information:

Phone: 269-983-5432

Secondary phone: 269-921-0473

Email: Apeters@SJcity.com

Harbormaster: Andrew Peters



Radio Channel:

9

Dates Open:

April 1 to October 31

Amenities:

- water
- electricity (30-amp)
- modern restroom
- showers
- gasoline
- diesel
- pump-out
- ice
- fish cleaning station
- boat launch
- hoist
- long-term parking
- day use dockage
- grills/picnic tables
- laundry
- marine supplies
- trash
- boaters lounge
- loaner bikes

Notes:

West Basin Marina is a 100-slip marina located on the St. Joseph River. The marina is just one block east of the public beach at Tiscornia Park and the St. Joseph north pier lighthouse on Lake Michigan. Marina users can enjoy a variety of amenities, as well as a courtesy shuttle or free loaner bicycles to explore the St. Joseph area.

[Cornerstone Chamber of Commerce](http://www.cornerstonechamber.com): 269-925-6100

New Buffalo Marina

Harbor Reservations:

1-800-447-2757 or

www.midnrreservations.com

Transient and seasonal slips available

Channel:

41° 48' 07" N 86° 45' 13" W

Marina:

41° 47' 53" N 86° 44' 50" W

Contact Information:

Phone: 269-469-6887

Off-season phone: 269-469-3574

Radio Channel:

9,16

Dates Open:

Mid-May to mid-September

Amenities:

- water
- electricity (30 & 50-amp)
- restroom
- showers
- pump-out
- ice
- boat launch
- dog run
- day use dockage
- grills/picnic tables



[Harbor Country Chamber of Commerce](http://www.harborcountrychamber.com): 269-469-5409

Menominee Marina

Harbor Reservations:

Please contact harbor for reservation information.
Transient and seasonal slips available.

Marina:

45° 06' 21" N 87° 35' 58" W

Contact Information:

Phone: 906-863-8498
Off-season phone: 906-864-0228
Email: boating@menomineemarina.com
Harbormaster: Bill Cavill

Radio Channel:

9,16

Dates Open:

Mid-May to mid-October

Amenities:

- water
- electricity (30 & 50-amp)
- modern restroom
- showers
- gasoline
- diesel
- pump-out
- ice
- boat launch
- long-term parking
- public phone
- dog run
- day use dockage
- playground/park
- grills/picnic tables
- laundry
- courtesy bicycles
- boater's lounge
- beach
- luggage carts
- marine supplies
- refuse receptacles
- wifi/internet
- dock carts

Notes:

Menominee Marina is home to 272 modern floating and rigid docks within a safe harbor and overlooks Menominee's historic waterfront downtown. Visit our beautiful boaters' lounge, a renovated water purification plant, and nearby Marina Park, where numerous concerts and annual events take place. Menominee - where the best of boating begins.

[Marinette Menominee Area Chamber of Commerce](#): 906-863-2679



Cedar River State Harbor

Harbor Reservations:

1-800-447-2757 or

www.midnrreservations.com

Transient and seasonal slips available

Marina:

45° 24' 42" N 87° 21' 02" W

Contact Information:

Phone: 906-864-1040

Off-season phone: 906-863-9747

Radio Channel:

9,16,68

Dates Open:

Early May to mid-September

Amenities:

- water
- electricity (20, 30 & 50-amp)
- restroom
- showers
- gasoline
- diesel
- pump-out
- ice
- boat launch
- long-term parking
- day use dockage
- grills/picnic tables
- bicycle rental
- bonfire permit
- fishing pier
- horseshoe pits
- luggage carts
- recycle bins
- dog run
- trash pickup
- vending
- machines
- wifi/internet

Notes:

Enjoy Cedar River State Harbor, a peaceful and quiet getaway located in the scenic town of Cedar River, Michigan. The harbor is located a short distance from two restaurants, a gas station and a bait shop. Wells State Park is only a couple miles away. Be certain to visit during the annual Pirate Day event!

[Delta County Chamber of Commerce](#): 906-786-2192



Escanaba Marina

Harbor Reservations:

Please contact harbor for reservation information.
Transient and seasonal slips available.

Marina:

45° 44' 34" N 87° 02' 05" W

Contact Information:

Phone: 906-786-9614
Harbormaster: Larry Gravatt

Radio Channel:

9

Dates Open:

May 1 to October 1

Amenities:

- water
- electricity (30 & 50-amp)
- modern restroom
- showers
- gasoline
- diesel
- pump-out
- ice
- boat launch
- 24-hour security
- dock carts
- trash
- day use dockage
- loaner bikes
- grills/picnic tables
- cable TV hook-up
- laundry
- wifi/internet
- boaters lounge

Notes:

Total number of slips: 150

[Delta County Chamber of Commerce](#): 906-786-2192



Gladstone Marina

Harbor Reservations:

1-800-447-2757 or

www.midnrreservations.com

Transient and seasonal slips available

Marina:

45° 50' 15" N 87° 01' 00" W

Contact Information:

Phone: 906-428-2916

Off-season phone: 906-428-9222

Radio Channel:

9, 68

Dates Open:

Early May to late September

Amenities:

- water
- electricity (20-amp)
- restroom
- showers
- gasoline
- diesel
- pump-out
- ice
- boat launch
- long-term parking
- public phone
- courtesy vehicle
- dog run
- playground/park
- grills/picnic tables
- car rental
- wifi/internet
- bicycle rental
- beach
- boater's-lounge
- day use dockage
- fish cleaning station
- hoist
- horseshoe courts
- luggage carts
- picnic shelters
- refuse receptacles
- trash pickup



Delta County Chamber of Commerce: 906-786-2192

Fayette Historic State Park • Snail Shell Harbor

Harbor Reservations:

1-800-447-2757 or

www.midnrreservations.com

Transient and seasonal slips available

Marina:

45° 43' 18" N 86° 40' 15" W

Contact Information:

Phone: 906-644-2603

Off-season phone: 906-644-2603

Radio Channel:

N/A

Dates Open:

Early May to early November

Amenities:

- water
- restroom
- ice
- boat launch
- public phone
- day use dockage
- playground/park
- grills/picnic tables

Notes:

Snail Shell Harbor is located within the historic townsite of Fayette in Fayette Historic State Park. Fayette was once one of the Upper Peninsula's most productive iron-smelting operations. Experience life as it was in this partially restored company town.

[Delta County Chamber of Commerce](#): 906-786-2192



Manistique Marina

Harbor Reservations:

1-800-447-2757 or

www.midnrreservations.com

Transient and seasonal slips available

Channel:

45° 56' 41" N 86° 14' 54" W

Marina:

45° 57' 08" N 86° 14' 08" W

Contact Information:

Phone: 906-341-6841

Off-season phone: 906-341-2290

Radio Channel:

9

Dates Open:

Mid-May to mid-October

Amenities:

- water
- electricity (30-amp)
- restroom
- showers
- gasoline
- pump-out
- ice
- fish cleaning station
- boat launch
- long-term parking
- dog run
- 24-hour security
- playground/park
- grills/picnic tables
- refuse receptacles
- trash pickup
- vending machines



Schoolcraft County Chamber of Commerce: 888-819-7420

Naubinway - Garfield Township Marina

Harbor Reservations:

Please contact harbor for reservation information.
Transient and seasonal slips available.

Marina:

46° 05' 12" N 85° 26' 25" W

Contact Information:

Phone: 906-477-6823
Secondary phone: 906-440-5195
Off-season phone: 906-477-6481
Email: garfieldclerk@lighthouse.net
Harbormaster: Brent Geske



Dates Open:

Mid-May to mid-September

Amenities:

- water
- modern restroom
- showers
- boat launch
- day use dockage
- courtesy vehicle
- loaner bikes
- electricity (20 amp, 30-amp, 50 amp)
- pump-out
- long-term parking
- playground/park
- grills/picnic tables
- marine supplies
- marine repairs
- trash
- ice*
- gasoline*
- diesel*

Notes:

This 14 slip marina has a shuttle service available on top of the amenities mentioned.

*Available by delivery - call 906-477-6823 or 906-440-5195 (7 a.m. - 10 p.m.)

[Top of the Lake Communities Association](http://www.topofthelake.com): 906-477-6221

Whitefish Point Harbor

Harbor Reservations:

Please contact harbor for reservation information.

Transient slips available.

Marina:

46° 45' 31" N 84° 57' 52" W

Contact Information:

Phone: 906-492-3415

Dates Open:

Mid-April to early November (weather dependent)

Amenities:

- boat launch
- rustic restroom

Notes:

This is an eight slip marina. They are not fee slips.



Little Lake State Harbor

Harbor Reservations:

Please contact harbor for reservation information.

Marina:

46° 43' 06" N 85° 21' 48" W

Contact Information:

Phone: 906-492-3415

Dates Open:

Mid-May to late September (weather dependent)

Amenities:

- water
- rustic restroom
- electricity (generator started on demand)
- primitive restroom
- boat launch
- public phone

[Newberry Area Chamber of Commerce](#): 800-831-7292



Grand Marais Marina

Harbor Reservations:

1-800-447-2757 or
www.midnrreservations.com
Broadside slips available

Marina:

46° 41' 05" N 85° 58' 15" W

Contact Information:

Phone: 906-494-2613
Off-season phone: 906-494-2613

Radio Channel:

16

Dates Open:

Mid-May to mid-September

Amenities:

- Grand Marais Marina
- water
- electricity (50-amp)
- gasoline
- diesel
- pump-out
- fish cleaning station
- boat launch
- courtesy vehicle
- dog run
- day use dockage
- grills/picnic tables

[Grand Marais Chamber of Commerce](#): 906-494-2477



Munising - Bayshore Marina

Harbor Reservations:

1-800-447-2757 or
www.midnrreservations.com
Transient slips available

Marina:

46° 24' 52" N 86° 39' 06" W

Contact Information:

Phone: 906-387-3445
Off-season phone: 906-387-2095

Radio Channel:

16

Dates Open:

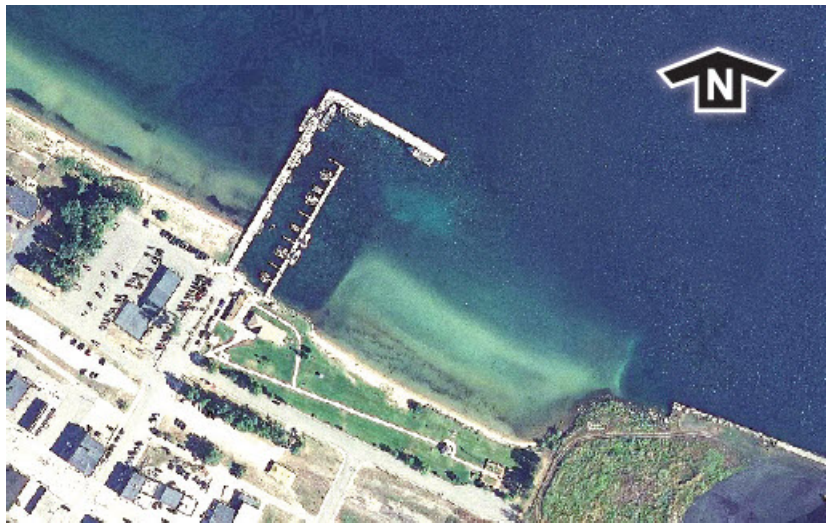
Mid-May to mid-October

Amenities:

- water
- electricity (20, 30 & 50-amp)
- restroom
- showers
- gasoline
- pump-out
- ice
- boat launch
- public phone
- day use dockage
- playground/park
- grills/picnic tables
- gift shop
- luggage carts
- parking
- picnic shelter
- refuse receptacles
- fishing pier
- beach
- vending machines
- visitor center
- 24-hour security
- trash pickup
- wifi/internet

Notes:

The western gateway to the Picture Rocks National Lakeshore, Munising is surrounded by natural beauty. Munising Bay is sheltered by Grand Island National Recreation Area, which features many recreational opportunity and several nice anchorages. The marina, which includes transient facilities for vessels 20-300-feet long, is only a block away from the Munising business district.



Cinder Pond Marina

Harbor Reservations:

1-800-447-2757 or

www.midnrreservations.com

Transient and seasonal slips available

Marina:

46° 31' 56" N 87° 22' 26" W

Contact Information:

Phone: 906-228-0469

Off-season phone: 906-228-0460

Email: parks@marquettemi.gov

Harbormaster: Kevin Dowling

Radio Channel:

16, 71

Dates Open:

May 1 to October 31

Amenities:

- water
- electricity (20, 30 & 50-amp)
- modern restroom
- showers
- gasoline
- diesel
- pump-out
- ice
- fish cleaning station
- boat launch
- boaters lounge
- public phone
- dog run
- day use dockage
- 24-hour security
- playground/park
- grills/picnic tables
- cable TV hook-up
- laundry
- wifi/internet

Notes:

This 104 slip marina is within walking distance of the downtown Marquette district.

[Marquette Chamber of Commerce](http://MarquetteChamberofCommerce.com): 906-226-6591



Marquette - Presque Isle Marina

Harbor Reservations:

1-800-447-2757 or

www.midnrreservations.com

Transient and seasonal slips available

Marina:

46° 34' 20" N 87° 22' 25" W

Contact Information:

Phone: 906-228-0464

Off-season phone: 906-228-0460

Radio Channel:

9,16

Dates Open:

Early May to early November

Amenities:

- water
- electricity (20, 30 & 50-amp)
- restroom
- showers
- gasoline
- diesel
- pump-out
- ice
- boat launch
- long-term parking
- day use dockage
- 24-hour security
- playground/park
- grills/picnic tables



[Marquette Chamber of Commerce](#): 906-226-6591

Big Bay Safe Harbor and Marina

Harbor Reservations:

Please contact harbor for reservation information.

Marina:

46° 49' 45" N 87° 43' 27" W

Contact Information:

Phone: 906-345-9353

Off-season phone: 906-225-8183

Email: perkinspark@mqtco.org

Harbormaster: Chuck Carbert

Radio Channel:

68

Dates Open:

Mid-May to mid-October

Amenities:

- water
- electricity (30-amp)
- restroom
- showers
- gasoline
- pump-out
- boat launch
- long-term parking
- dog run
- day use dockage
- grills/picnic tables

Notes:

This eight slip marina is located in a small, secluded facility in NW Marquette County on Lake Superior. The marina is within walking distance of restaurants, taverns, a convenience store and a post office.

[Marquette Area Chamber of Commerce](http://MarquetteAreaChamberofCommerce.com): 888-578-6489



L'Anse Village Marina

Harbor Reservations:

Please contact harbor for reservation information.

Channel:

45° 03' 32" N 83° 25' 17" W

Contact Information:

Phone: 906-524-6116

Email: manager@lansemi.org

Harbormaster: Lyle Olson

Radio Channel:

9

Dates Open:

Mid-May to mid-October

Amenities:

- water
- electricity (30-amp)
- modern restroom
- showers
- pump-out
- fish cleaning station
- public phone
- day use dockage
- playground/park
- grills/picnic tables
- Wi-fi

Notes:

L'Anse Village Marina has a total of 15 slips and is located at the head of the Keweenaw Bay on Lake Superior. This marina provides excellent access to fishing, recreation and is home to the Baraga County Lake Trout Festival every June.



Baraga Municipal Marina

Harbor Reservations:

Please contact harbor for reservation information.

Marina:

46° 46' 39" N 88° 28' 48" W

Contact Information:

Phone: 906-353-8110

Off-season phone: 906-353-6237

Harbormaster: Jason Chaudler

Radio Channel:

68

Dates Open:

Early May to early October

Amenities:

- water
- electricity (30 & 50-amp)
- restroom
- showers
- gasoline
- pump-out
- ice
- fish cleaning station
- boat launch
- public phone
- day use dockage
- 24-hour security
- playground/park
- grills/picnic tables

Notes:

Baraga Municipal Marina has a total of 22 slips.

[Baraga County Chamber of Commerce](#): 906-353-8808



Hancock - Houghton County Marina

Harbor Reservations:

1-800-447-2757 or

www.midnrreservations.com

Transient and seasonal slips available

Channel:

47° 14' 08" N 88° 37' 50" W

Marina:

47° 07' 30" N 88° 34' 19" W

Contact Information:

Phone: 906-482-6010

Off-season phone: 906-482-8307

Radio Channel:

16,68

Dates Open:

Early May to late October

Amenities:

- water
- electricity (20, 30, 50 & 100-amp)
- restroom
- showers
- gasoline
- diesel
- pump-out
- ice
- boat launch
- dog run
- day use dockage
- grills/picnic tables
- laundry
- car rental
- marine repairs
- wifi/internet



[Keweenaw Peninsula Chamber of Commerce](#): 906-482-5241 or 866-304-5722

Houghton City Marina

Harbor Reservations:

Please contact harbor for reservation information.

Channel:

46° 57' 40" N 88° 26' 00" W

Marina:

47° 07' 21" N 88° 34' 20" W

Contact Information:

Phone: 906-482-1700

Off-season phone: 906-482-1700

Email: info@cityofhoughton.com

Radio Channel:

N/A

Dates Open:

Mid-May to mid-October

Amenities:

- day use dockage
- fishing pier
- parking
- picnic area
- picnic shelter
- modern restrooms

Notes:

The City of Houghton offers free broadside mooring for all traffic including day-use, overnight and commercial at any of its five dock facilities located between Kestner Park and East Houghton Park along our waterfront. These facilities generally do not include amenities, though the full-service Houghton County Marina is directly across the canal to provide fuel and pumpout services (but has limited transient space).

The mooring facilities are a short walk from downtown shops, restaurants and bars which allows boaters to tie up for an hour or days at a time to enjoy Houghton. We only ask that if you plan on staying awhile that you call in your name, hull and contact information when you dock, in the event that you need to be reached for any reason.

Visit www.downtownhoughton.com for information on special events and like us on Facebook.

[Keweenaw Peninsula Chamber of Commerce](#): 906-482-5241 or 866-304-5722



Grand Traverse Bay - Schoolcraft Twp. Marina

Harbor Reservations:

1-800-447-2757 or

www.midnrrreservations.com

Transient and seasonal slips available

Marina:

45° 11' 18" N 88° 14' 00" W

Contact Information:

Phone: 906-296-8721

Off-season phone: 906-296-8721

Radio Channel:

N/A

Dates Open:

N/A

Amenities:

- primitive restroom
- boat launch
- long-term parking
- day use dockage



[Keweenaw Peninsula Chamber of Commerce](#): 906-482-5241 or 866-304-5722

Lac La Belle State Harbor

Harbor Reservations:

1-800-447-2757 or
www.midnrreservations.com
Transient slips available

Marina:

47° 22' 30" N 87° 57' 40" W

Contact Information:

Phone: 906-289-4698
Off-season phone: 906-289-4215

Radio Channel:

N/A

Dates Open:

Mid-May to mid-September

Amenities:

- primitive restroom
- boat launch
- dog run
- day use dockage
- picnic tables
- parking



[Keweenaw Peninsula Chamber of Commerce](#): 906-482-5241 or 866-304-5722

Copper Harbor State Harbor

Harbor Reservations:

1-800-447-2757 or
www.midnrreservations.com
Broadside slips available

Marina:

47° 28' 42" N 87° 51' 50" W

Contact Information:

Phone: 906-289-4698
Off-season phone: 906-289-4215

Radio Channel:

9

Dates Open:

Mid-May to mid-September

Amenities:

- water
- electricity (20, 30 & 50-amp)
- restroom
- showers
- gasoline
- diesel
- pump-out
- ice
- boat launch
- public phone
- dog run
- day use dockage
- picnic tables
- boater's-lounge
- gift shop
- parking
- recycle bins
- refuse receptacles
- vending machines

Notes:

Enjoy Copper Harbor State Harbor, located on Lake Superior at the north end of the Keweenaw Peninsula. Shopping and activities are only a short walk away. The lighthouse complex features a restored 1848 lightkeeper's dwelling, 1866 lighthouse, 1933 steel light tower and an interpretive trail.

[Keweenaw Peninsula Chamber of Commerce](#): 906-482-5241 or 866-304-5722



Eagle Harbor State Harbor

Harbor Reservations:

1-800-447-2757 or
www.midnrreservations.com
Broadside slips available

Marina:

47° 27' 52" N 88° 09' 33" W

Contact Information:

Phone: 906-289-4215

Radio Channel:

N/A

Dates Open:

Mid-May to mid-September

Amenities:

- water
- electricity (20-amp)
- showers
- primitive restroom
- gasoline
- pump-out
- parking
- boat launch
- dog run
- day use dockage
- picnic tables



[Keweenaw Peninsula Chamber of Commerce](#): 906-482-5241 or 866-304-5722

Rock Harbor - Harbor of Refuge

Harbor Reservations:

1-800-447-2757 or
www.midnrrreservations.com
Transient slips available

Harbor:

48° 07' 15" N 88° 31' 42" W

Contact Information:

Phone: 906-482-0984
Off-season phone: 906-482-0984

Radio Channel:

16

Dates Open:

Mid-April to late October

Amenities:

None - harbor of refuge only

[Keweenaw Peninsula Chamber of Commerce](#): 906-482-5241 or 866-304-5722



Washington Harbor - Harbor of Refuge Isle Royale

Harbor Reservations:

1-800-447-2757 or
www.midnrrreservations.com
Transient slips available

Channel:

47° 54' 09" N 89° 10' 54" W

Contact Information:

Phone: 906-482-0984
Off-season phone: 906-482-0984

Radio Channel:

16

Dates Open:

Mid-April to late October

Amenities:

None, harbor of refuge only

[Keweenaw Peninsula Chamber of Commerce](#): 906-482-5241 or 866-304-5722



Ontonagon Village Marina

Harbor Reservations:

1-800-447-2757 or

www.midnrreservations.com

Transient and seasonal slips available

Marina:

46° 52' 57" N 89° 19' 58" W

Contact Information:

Phone: 906-884-4225

Off-season phone: 906-884-2305

Radio Channel:

16

Dates Open:

Mid-May to November 1

Amenities:

- water
- electricity (30-amp)
- modern and rustic restrooms
- showers
- gasoline
- pump-out
- ice
- fish cleaning station
- boat launch
- hoist
- long-term parking
- public phone
- day use dockage
- grills/picnic tables
- playground/park

Notes:

Ontonagon Village Marina has 38 slips in total.

[Ontonagon County Chamber of Commerce](#): 906-884-4735



Black River - U.S. National Forest

Harbor Reservations:

1-800-447-2757 or

www.midnrreservations.com

Transient and seasonal slips available

Marina:

46° 40' 13" N 90° 03' 00" W

Phone:

Phone: 906-932-1330

Off-season phone: 906-932-1330

Radio Channel:

16

Dates Open:

Early May to late September

Amenities:

- water (at fuel pump)
- electricity (20, 30-amp)
- restroom
- gasoline
- pump-out
- ice
- boat launch
- public phone
- long-term parking
- dog run
- day use dockage
- playground/park
- grills/picnic tables



[Bessemer Chamber of Commerce](#): 906-663-4070

Index

Alpena Municipal Marina

[Alpena Municipal Marina](#)

Angler's Monitoring Network

[Invasive Plants and Animals](#)

Aquatic Resources Trust Fund

[Dump Stations and Clean Marina Program](#)

Arcadia Veterans Memorial Marina

[Arcadia Veterans Memorial Marina](#)

Au Gres State Harbor

[Au Gres State Harbor](#)

Baraga Municipal Marina

[Baraga Municipal Marina](#)

Bay City Liberty Harbor

[Bay City - Liberty Harbor](#)

Bay Port Harbor of Refuge

[Bay Port Harbor of Refuge](#)

Beaver Island Municipal Marina

[Beaver Island Municipal Marina](#)

Big Bay Harbor

[Big Bay Harbor - Marquette County](#)

Black River - U.S. National Forest

[Black River - U.S. National Forest](#)

Bois Blanc (Island) Township Harbor

[Bois Blanc \(Island\) Township Harbor](#)

Bolles Harbor of Refuge

[Bolles Harbor of Refuge](#)

Boyne City F.G. Moore Municipal Marina

[Boyne City - F.G. Moore Municipal Marina](#)

Breaux Fund

[Dump Stations and Clean Marina Program](#)

Caseville Marina

[Caseville Marina](#)

Cedar River State Harbor

[Cedar River State Harbor](#)

Cedarville Marina

[Cedarville Marina](#)

Charles F. Moore Harbor

[Charles F. Moore Harbor](#)

Charlevoix City Marina

[Charlevoix City Marina](#)

Cheboygan County Marina

[Cheboygan County Marina](#)

Cheboygan Municipal Marina

[Cheboygan Municipal Marina](#)

Clean Marina Program

[Dump Stations and Clean Marina Program](#)

Clean Vessel Act

[Dump Stations and Clean Marina Program](#)

Copper Harbor State Harbor

[Copper Harbor State Harbor](#)

De Tour State Harbor

[De Tour State Harbor](#)

Detroit - William G Milliken State Park and Harbor

[Wm G Milliken State Park and Harbor](#)

Detroit Erma Henderson Park

[Detroit - Erma Henderson Park](#)

Eagle Harbor State Harbor

[Eagle Harbor State Harbor](#)

East Coast

[East Coast Harbors](#)

East Jordan City Marina

[East Jordan City Marina](#)

East Tawas State Harbor

[East Tawas State Harbor](#)

Elizabeth Park Marina

[Elizabeth Park Marina](#)

Elk Rapids E.C. Grace Memorial Harbor

[Elk Rapids - E.C. Grace Memorial Harbor](#)

Escanaba Municipal Marina

[Escanaba Municipal Marina](#)

Fayette Historic State Park Snail Shell Harbor

[Fayette Historic State Park - Snail Shell Harbor](#)

Fees

[Fees, Docking Space, Radio Communications](#)

Fish & Wildlife Service

[Sport Fish Restoration Project](#)

Fish Disease

[Commercial Fishing Nets and Fish Disease](#)

Frankfort Municipal Marina

[Frankfort Municipal Marina](#)

Fueling

[Fueling, Navigation Charts, Harbor Location Information](#)

Gladstone Marina

[Gladstone Marina](#)

Grand Haven Municipal Marina

[Grand Haven Municipal Marina](#)

Grand Marais Marina

[Grand Marais Marina](#)

Grand Traverse Bay Schoolcraft Twp. Marina

[Grand Traverse Bay - Schoolcraft Twp. Marina](#)

Grayhaven State Harbor

[Grayhaven State Harbor](#)

Great Lakes Harbors Program

[The Harbor Program and Funding](#)

Greilickville Elmwood Twp Marina

[Greilickville - Elmwood Twp. Marina](#)

Grill-free Docks

[Harbor Arrival Procedures and Courtesy](#)

Hammond Bay State Harbor

[Hammond Bay State Harbor](#)

Hancock - Houghton County Marina

[Hancock - Houghton County Marina](#)

Harbor Arrival Procedures and Courtesy

[Harbor Arrival Procedures and Courtesy](#)

Harbor Beach Marina

[Harbor Beach Marina](#)

Harbor Location Information

[Fueling, Navigation Charts, Harbor Location Information](#)

Harbor Rules

[Fees, Docking Space, Radio Communications](#)

Harbor Springs Municipal Marina

[Harbor Springs Municipal Marina](#)

Harrisville Municipal Marina

[Harrisville Municipal Marina](#)

Hessel Marina

[Hessel Marina](#)

Holland Harbor of Refuge

[Holland Harbor of Refuge](#)

Houghton City Marina

[Houghton City Marina](#)

Invasive Plants and Animals

[Invasive Plants and Animals](#)

L'Anse Municipal Marina

[L'Anse Municipal Marina](#)

Lac La Belle State Harbor

[Lac La Belle State Harbor](#)

Lake Erie Metropark Harbor of Refuge

[Lake Erie Metropark Harbor of Refuge](#)

Leland Township Marina

[Leland Township Marina](#)

Lexington State Harbor

[Lexington State Harbor](#)

Lime Island State Harbor

[Lime Island State Harbor](#)

Little Lake State Harbor

[Little Lake State Harbor](#)

Ludington Harbor View Marina

[Ludington Harbor View Marina](#)

Ludington Municipal Marina

[Ludington Municipal Marina](#)

Mackinac Island State Harbor

[Mackinac Island State Harbor](#)

Mackinaw City Municipal Marina

[Mackinaw City Municipal Marina](#)

Manistee Marina

[Manistee Marina](#)

Manistique Marina

[Manistique Marina](#)

Marquette Cinder Pond Marina

[Marquette - Cinder Pond Marina](#)

Marquette Presque Isle Marina

[Marquette - Presque Isle Marina](#)

Marsten Dame Marina

[Northport - G. Marsten Dame Marina](#)

Menominee Marina

[Menominee Marina](#)

Metro Beach Metropark Marina

[Metro Beach Metropark Marina](#)

Michigan Fishing License

[Michigan Fishing and Charts](#)

Michigan State Waterways Commission

[Fees, Docking Space, Radio Communications](#)

[The Harbor Program and Funding](#)

Michigan State Waterways Fund

[Sport Fish Restoration Project](#)

[Waterways Dollars at Work](#)

Monroe Harbor of Refuge

[Monroe Harbor of Refuge](#)

Mt. Clemens Harbor of Refuge

[Mt. Clemens Harbor of Refuge](#)

Munising Bayshore Marina

[Munising - Bayshore Marina](#)

Muskegon Hartshorn Marina

[Muskegon - Hartshorn Marina](#)

Naubinway Garfield Township Marina

[Naubinway - Garfield Township Marina](#)

Navigational Charts

[Fueling, Navigation Charts, Harbor Location Information](#)

New Buffalo Marina

[New Buffalo Marina](#)

No-wake Arrival

[Harbor Arrival Procedures and Courtesy](#)

Northport

[Northport - G. Marsten Dame Marina](#)

Ontonagon Village Marina

[Ontonagon Village Marina](#)

Oscoda Harbor of Refuge

[Oscoda Harbor of Refuge](#)

Outs and Dump Stations

[Dump Stations and Clean Marina Program](#)

Pentwater Municipal Marina

[Pentwater Municipal Marina](#)

Petoskey Marina

[Petoskey Marina](#)

Port Austin State Harbor

[Port Austin State Harbor](#)

Port Huron River Street Marina

[Port Huron River Street Marina](#)

Port Sanilac Harbor

[Port Sanilac Harbor](#)

Portage Lake Harbor of Refuge

[Portage Lake Harbor of Refuge](#)

Presque Isle State Harbor

[Presque Isle State Harbor](#)

Radio Communications

[Fees, Docking Space, Radio Communications](#)

Recreation Passport

[Recreation Passport](#)

Rock Harbor - Harbor of Refuge

[Rock Harbor - Harbor of Refuge](#)

Rogers City Marina

[Rogers City Marina](#)

Saint Ignace Marina

[Saint Ignace Marina](#)

Saint Joseph West Basin Marina

[Saint Joseph - West Basin Marina](#)

Saugatuck Harbor of Refuge

[Saugatuck Harbor of Refuge](#)

Sault Ste Marie George Kemp Marina

[Sault Ste. Marie - George Kemp Marina](#)

Sault Ste. Marie Charles Harvey Marina

[Sault Ste. Marie - Charles T. Harvey Marina](#)

Sebewaing Marina

[Sebewaing Marina](#)

South Haven Municipal Marina

[South Haven Municipal Marina](#)

South Manitou Island Harbor of Refuge

[South Manitou Island Harbor of Refuge](#)

Sport Fish Restoration

[Dump Stations and Clean Marina Program](#)

Sport Fish Restoration Program

[Sport Fish Restoration Project](#)

St. Clair Shores Harbor of Refuge

[St. Clair Shores](#)

Straits State Harbor

[Straits State Harbor](#)

Suttons Bay Marina

[Suttons Bay Marina](#)

Upper Peninsula

[Upper Peninsula Harbors](#)

Viral Hemorrhagic Septicemia

[Commercial Fishing Nets and Fish Disease](#)

Washington Harbor Harbor of Refuge

[Washington Harbor - Harbor of Refuge](#)

West Coast

[West Coast Harbors](#)

Whitefish Point State Harbor

[Whitefish Point State Harbor](#)

Whitehall White Lake Municipal Marina

[Whitehall - White Lake Municipal Marina](#)

Glossary