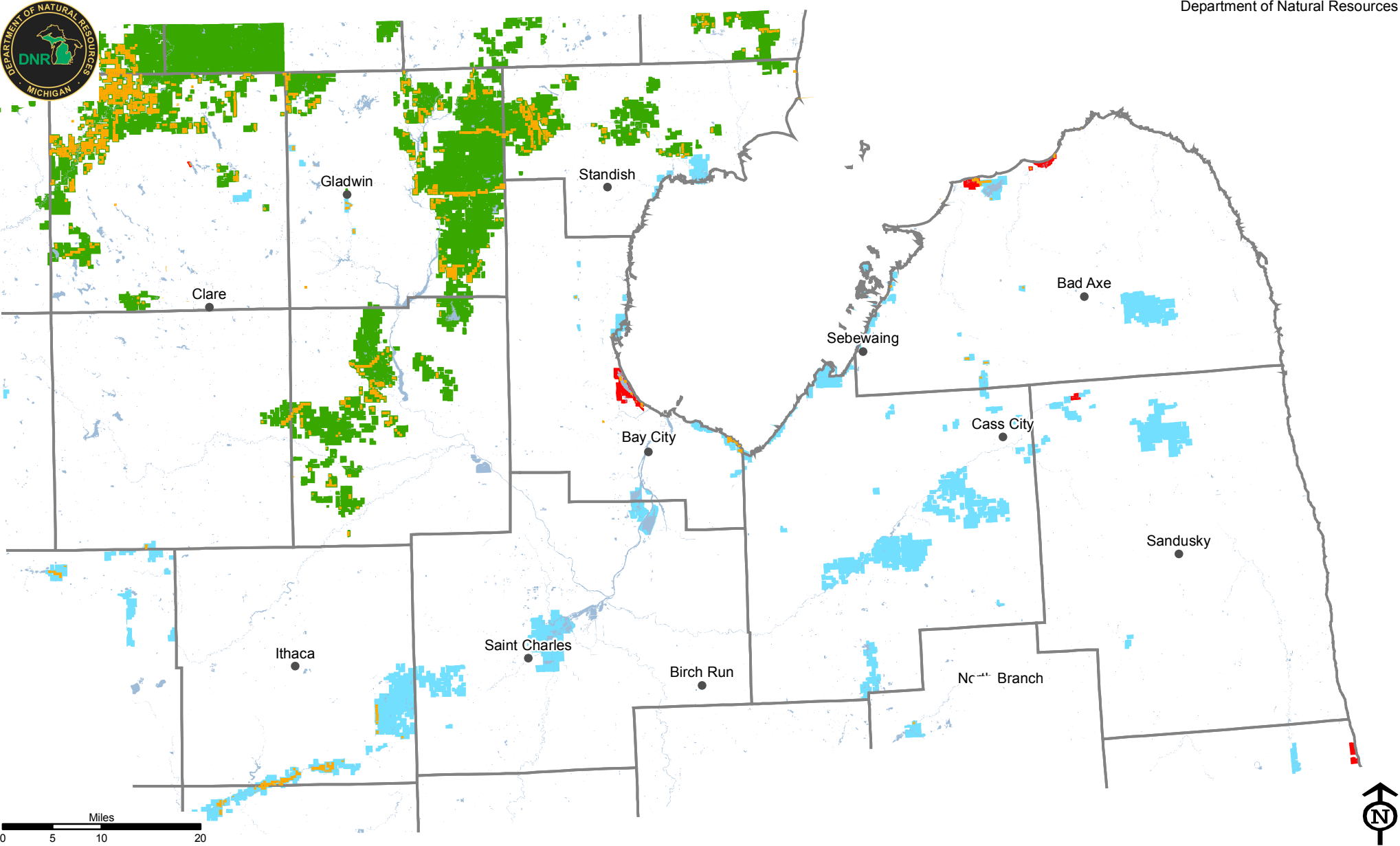


DNR Easements Bay Region

Resource Assessment Unit
Forest Resources Division
Department of Natural Resources



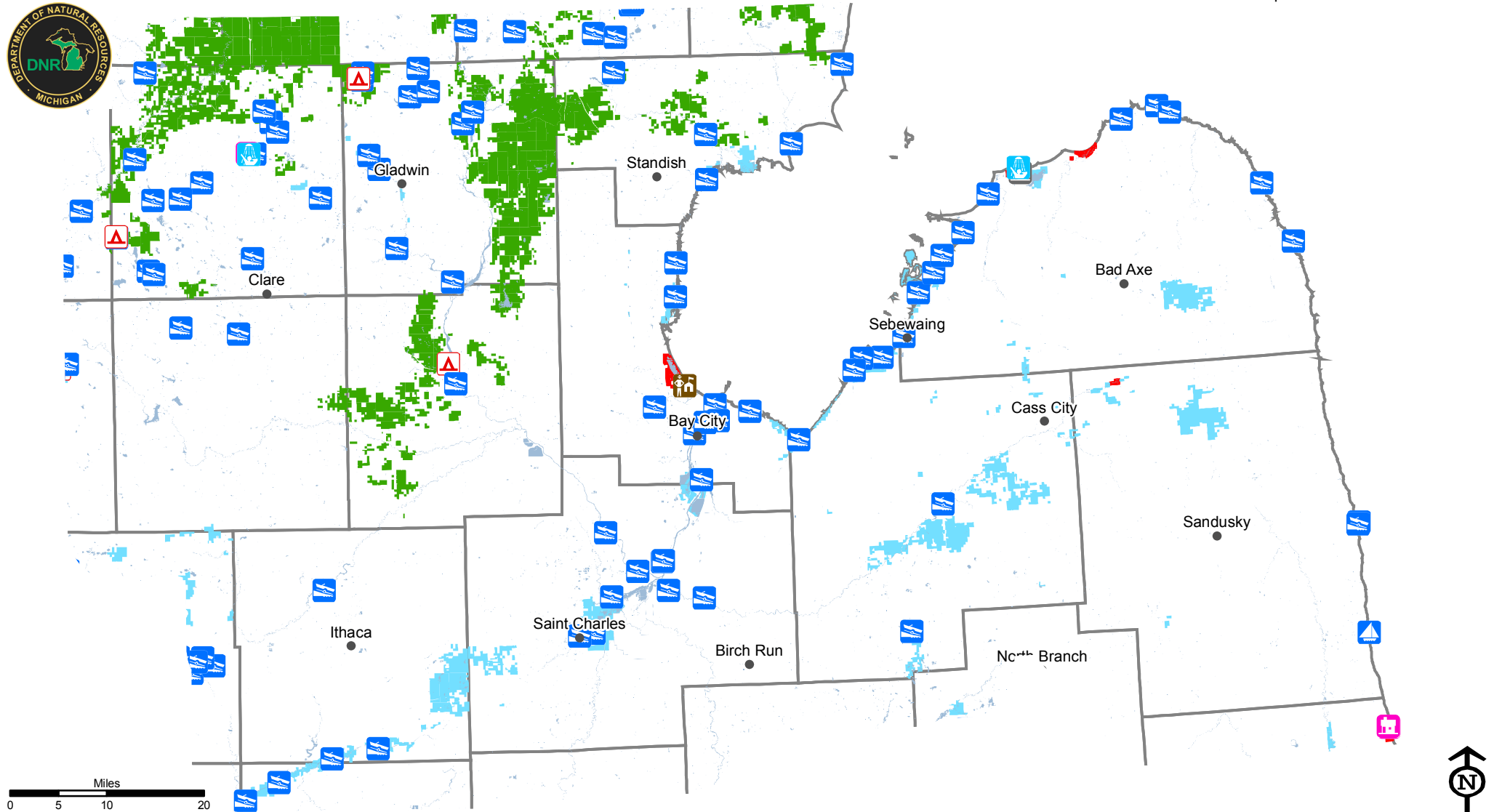
Legend

- Cities
- Counties
- Lakes and Rivers
- State Lands
- State Forests
- State Parks
- WLD DIV Lands
- Granted Easements

DNR Facilities

Bay Region

Forest Resources Division
Resource Assessment Unit
Department of Natural Resources



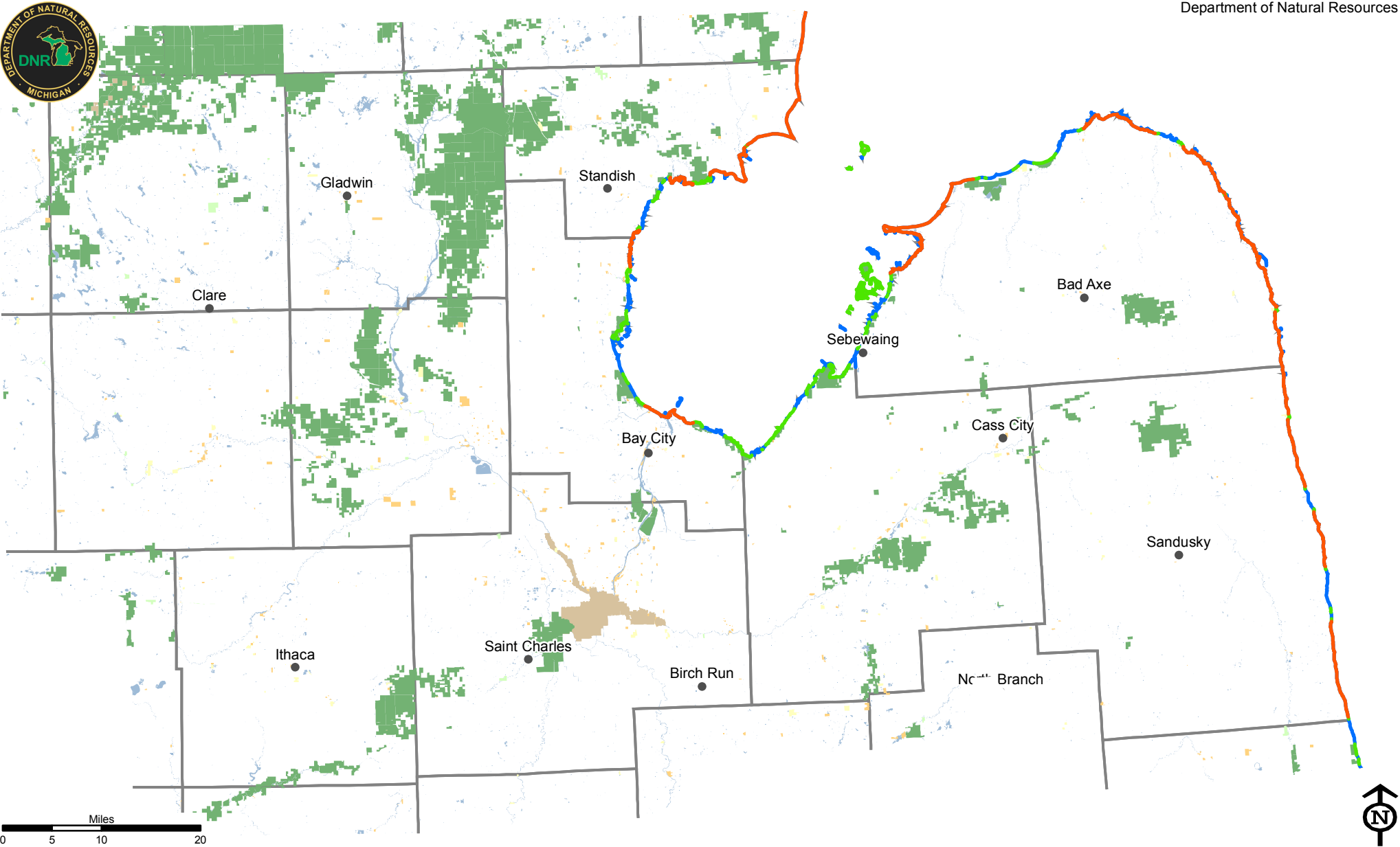
Legend

- | | | | | |
|------------------|--------------------|------------------------|--------------------|------------------------------|
| • Cities | State Lands | DNR Facilities | Historic Structure | Rustic Cabin |
| Lakes and Rivers | State Forests | Barn/Riding Stable | Lock | Rustic Campground |
| Counties | State Parks | Beach House/Bath House | Lodge | Shooting Range |
| | WLD DIV Lands | Boating Access Site | Mini Cabin | Visitor Center/Nature Center |
| | | Harbor | Museum | |
| | | Hatchery | Nursery | |

Great Lakes Access

Bay Region

Resource Assessment Unit
Forest Resources Division
Department of Natural Resources

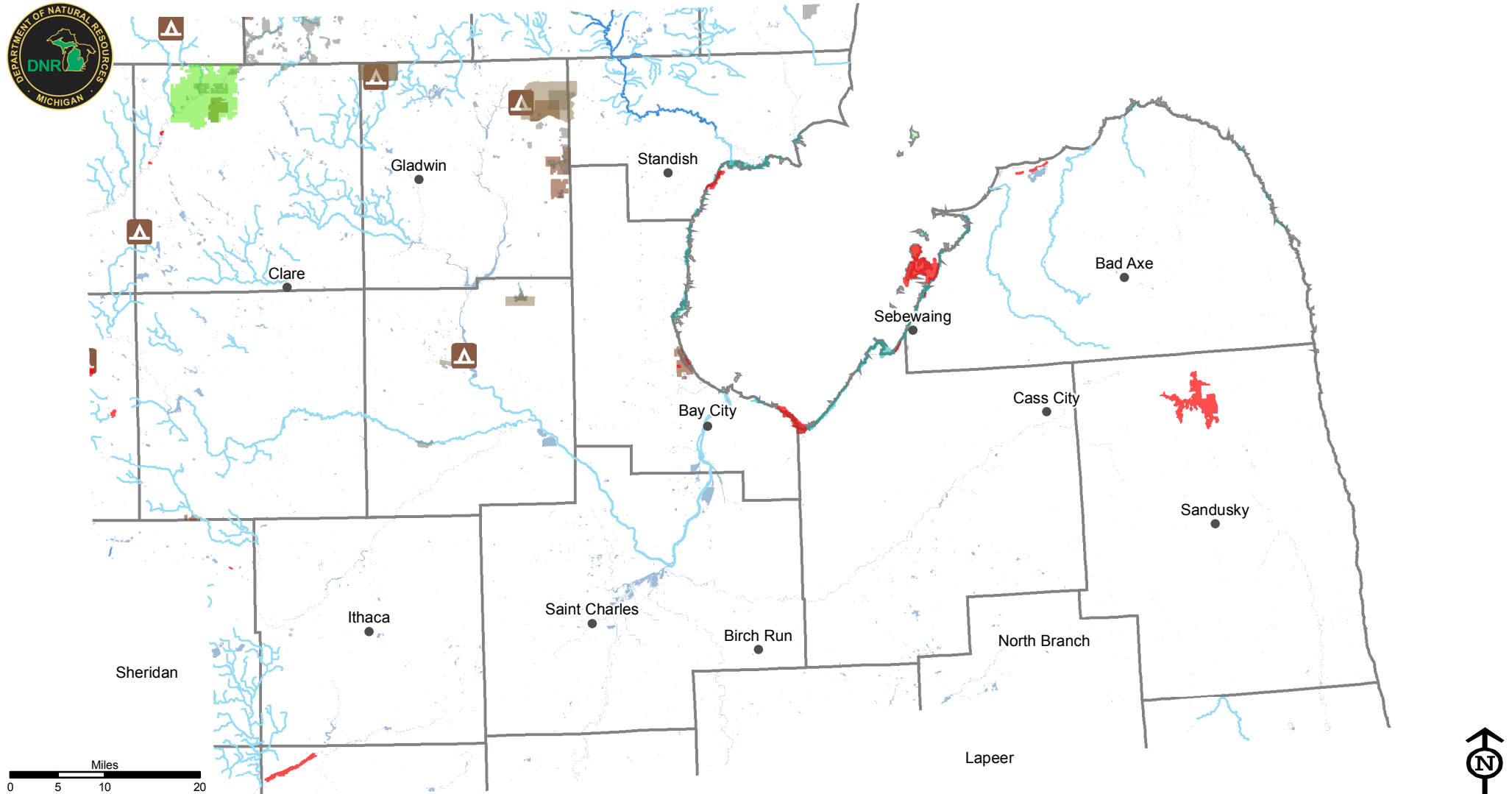


Legend

- | | | | |
|--------------------|------------------------------|---------------------------------|---|
| ● Cities | State Land | County Great Lakes Water Access | No Public Water Access |
| □ Counties | Federal Land | Local | Public Water Access |
| ■ Lakes and Rivers | The Nature Conservancy Lands | NGO | Continuous Shoreline greater then 5 miles without public water access |
| ■ Other | | | |

DNR HCVA, SCA, and ERA

Bay Region



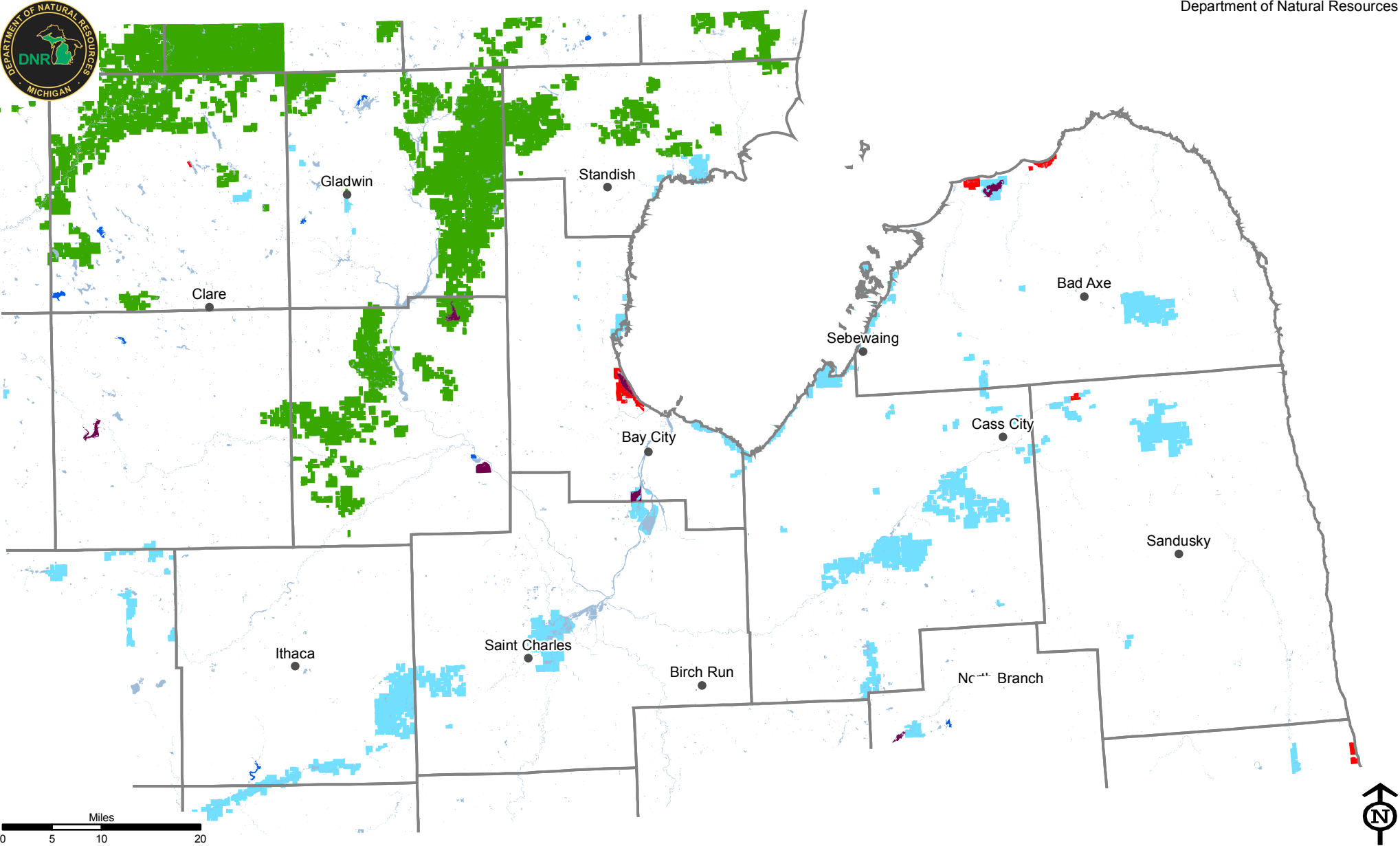
Legend

- Cities
- ▭ Counties
- ▭ Lakes and Rivers
- ▭ Ecological Reference Areas
- ▭ Natural Areas Legally Dedicated
- ▭ Dedicated Management Areas
- ▭ Kirtland Warbler Habitat
- ▭ Critical Coastal Habitat (Piping Plover)
- ▭ Natural Rivers Zoning District
- ▭ Natural Rivers Vegetative Buffer
- ▭ Critical Dunes
- ▭ Coastal Environmental Areas
- ▭ Campgrounds
- ▭ Fishing Access Sites
- ▭ Great Lakes Islands
- ▭ Wildlife Research Areas
- ▭ Research, Development, and Military Lands
- ▭ Wildlife Management Areas
- ▭ Deer Wintering Areas
- ▭ Cold Water Lakes
- ▭ Cold Water Streams
- ▭ IFMAP Special Conservation Areas
- ▭ Contiguous Resource Areas
- ▭ Visual Management Areas
- ▭ Wild & Scenic Rivers (USFS Lands)
- ▭ Mineral Resource Polygon
- ✕ Mineral Resource Points



DNR Lake Access Bay Region

Resource Assessment Unit
Forest Resources Division
Department of Natural Resources

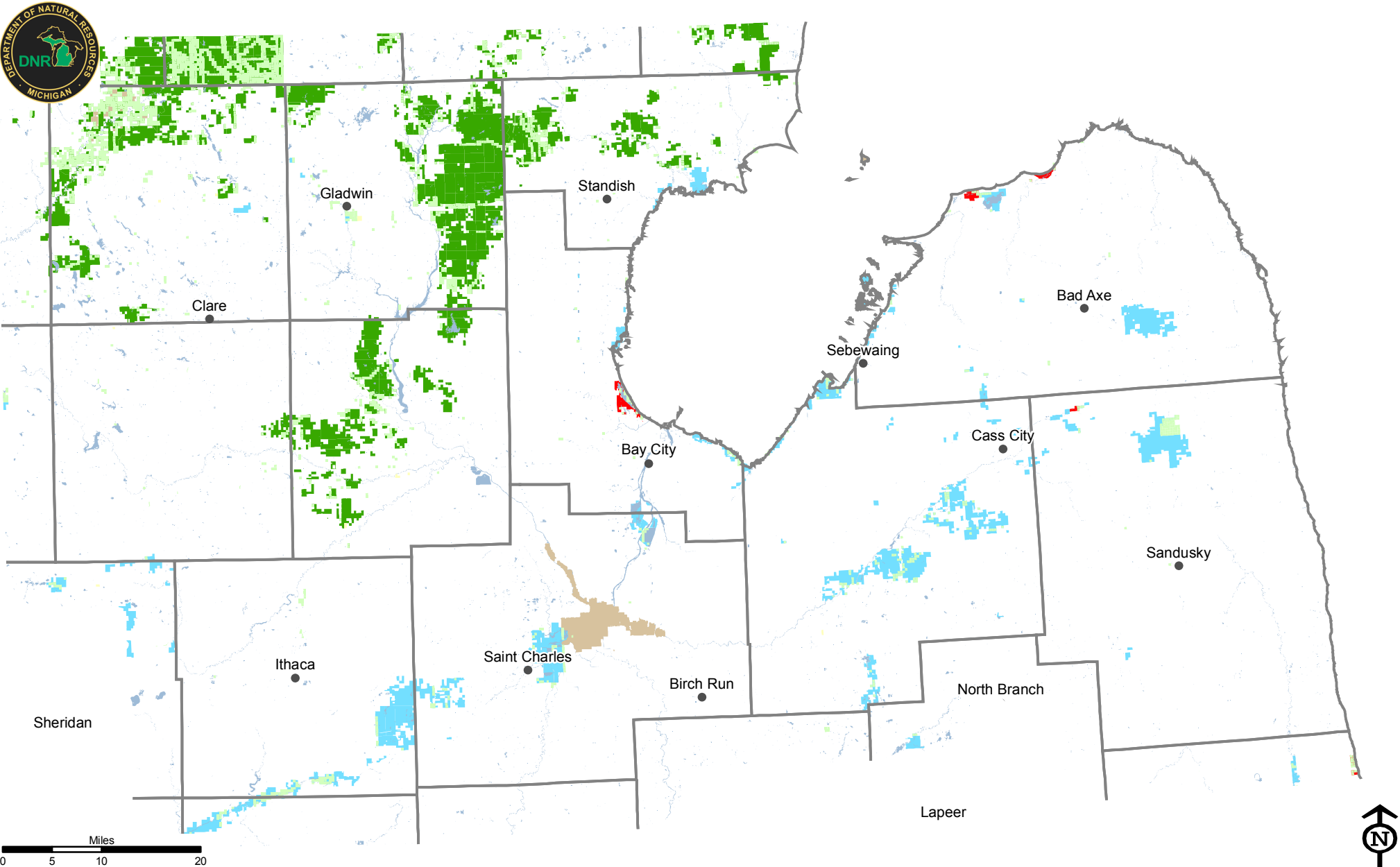


Legend

- Cities
- Counties
- Lakes and Rivers
- State Lands
- State Forests
- State Parks
- WLD DIV Lands
- Lakes Greater than 500 Acres wo Access
- Lakes Between 100 and 500 Acres wo Access

State, Commercial, and Federal Forests

Bay Region



● Cities

□ Counties

■ Lakes and Rivers

State Lands

■ State Forests

■ State Parks

■ WLD DIV Lands

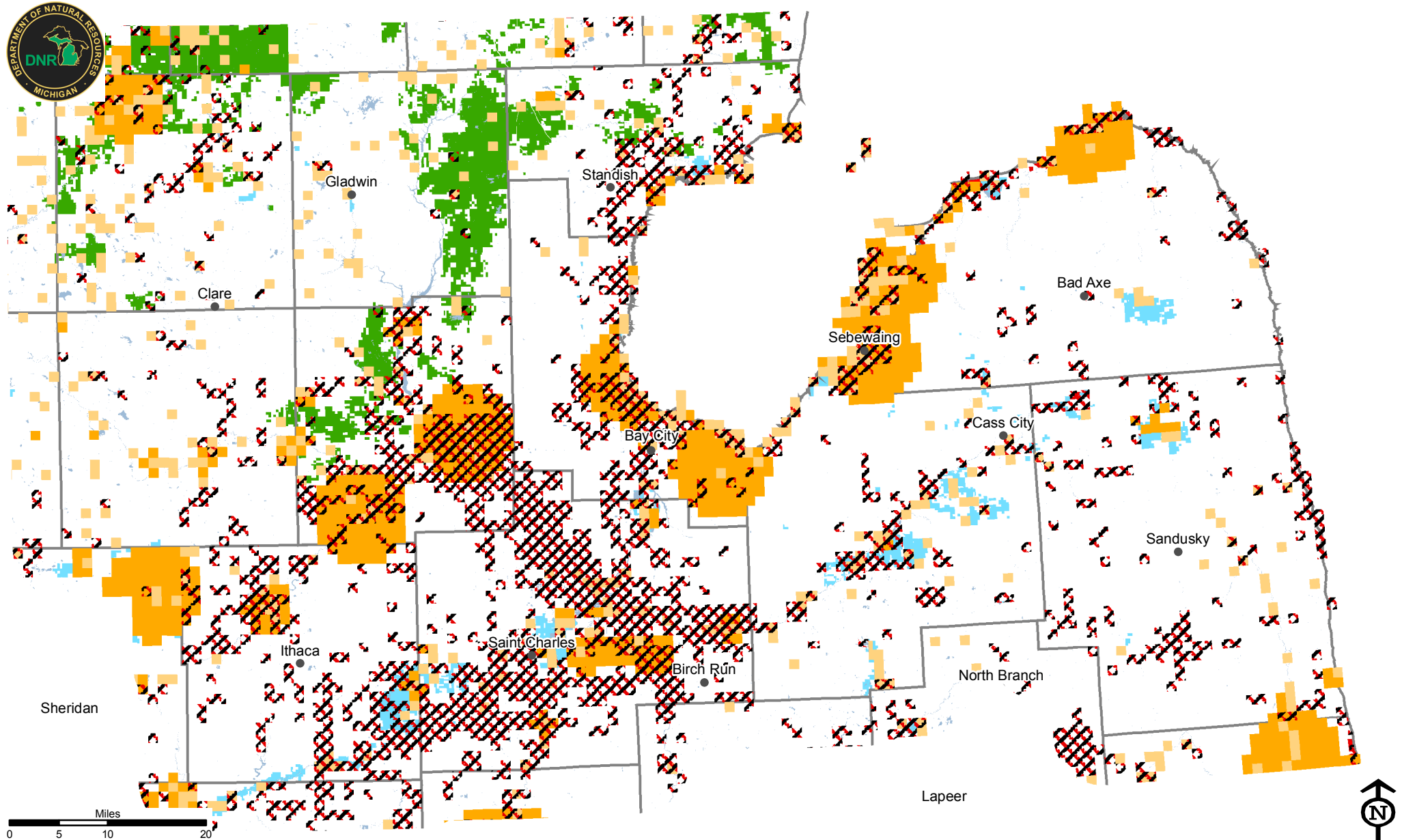
Conservation Easements

■ Commercial Forests

■ Federal Lands

DNR Natural and Cultural Features

Bay Region



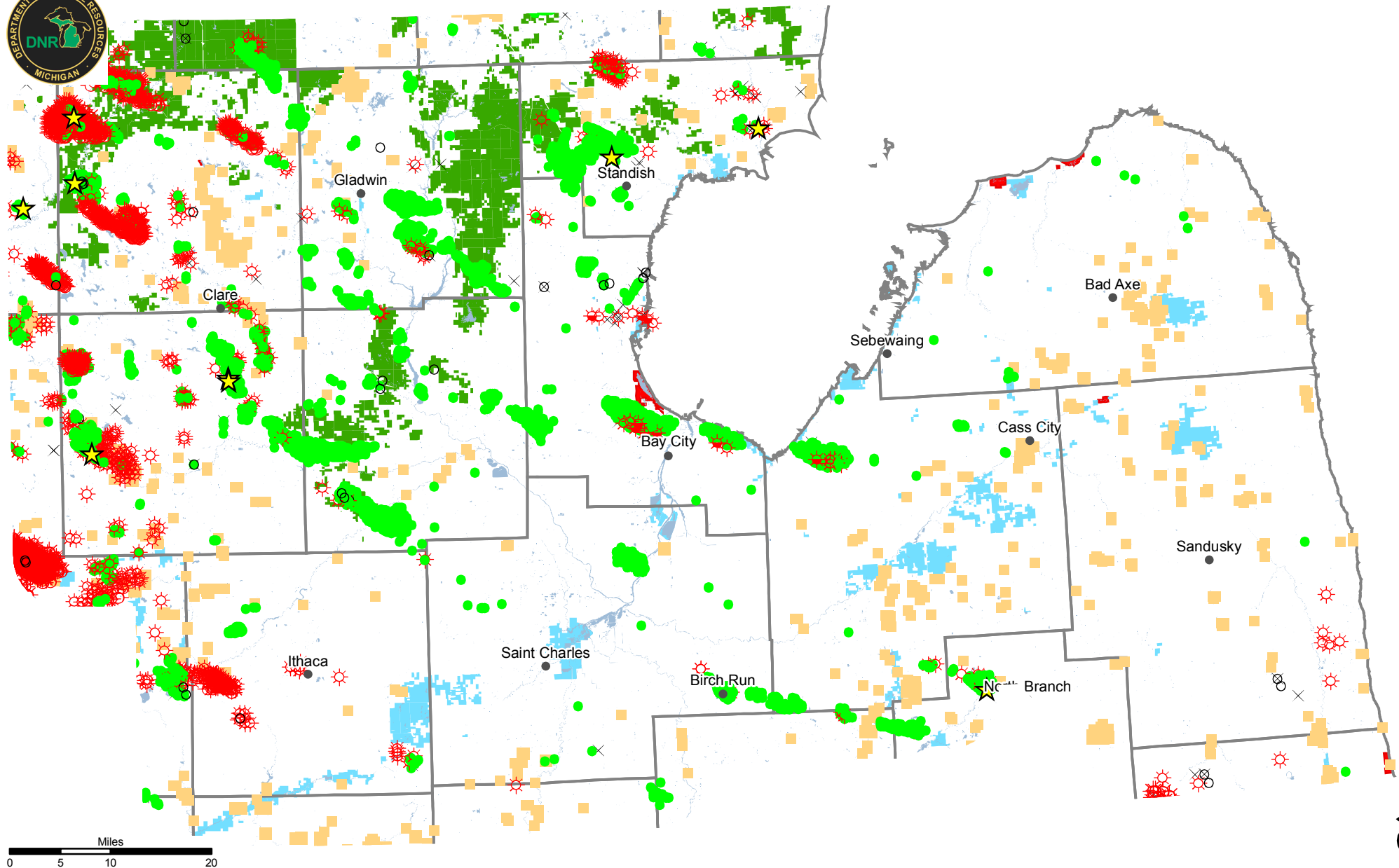
Legend

- Cities
- Counties
- Lakes and Rivers
- State Lands
- State Forests
- State Parks
- WLD DIV Lands
- ▤ Archaeology Sites
- Threatened_Endangered_or_Rare_Species_Sites
- Rare_Natural_Community_Sites

DNR Oil and Gas

Bay Region

Resource Assessment Unit
Forest Resources Division
Department of Natural Resources



0 5 10 20
Miles

Legend

- | | | | | |
|--------------------|-----------------|------------------|-------------------------------------|---|
| ● Cities | State Lands | ● Oil | ⊗ Gas Storage | ★ Oil & Gas Well Hydrogen Sulfide Wells |
| □ Counties | ■ State Forests | ⊗ Natural Gas | ⊗ Gas Production and Brine Disposal | × Oil & Gas Well Surface Locations |
| ■ Lakes and Rivers | ■ State Parks | ⊗ Gas Condensate | ○ Permitted Well Location | ■ Sand & Gravel Pits |
| ■ WLD DIV Lands | ■ Gas Injection | | | |



DNR Timber Management 2008-2012

Bay Region

