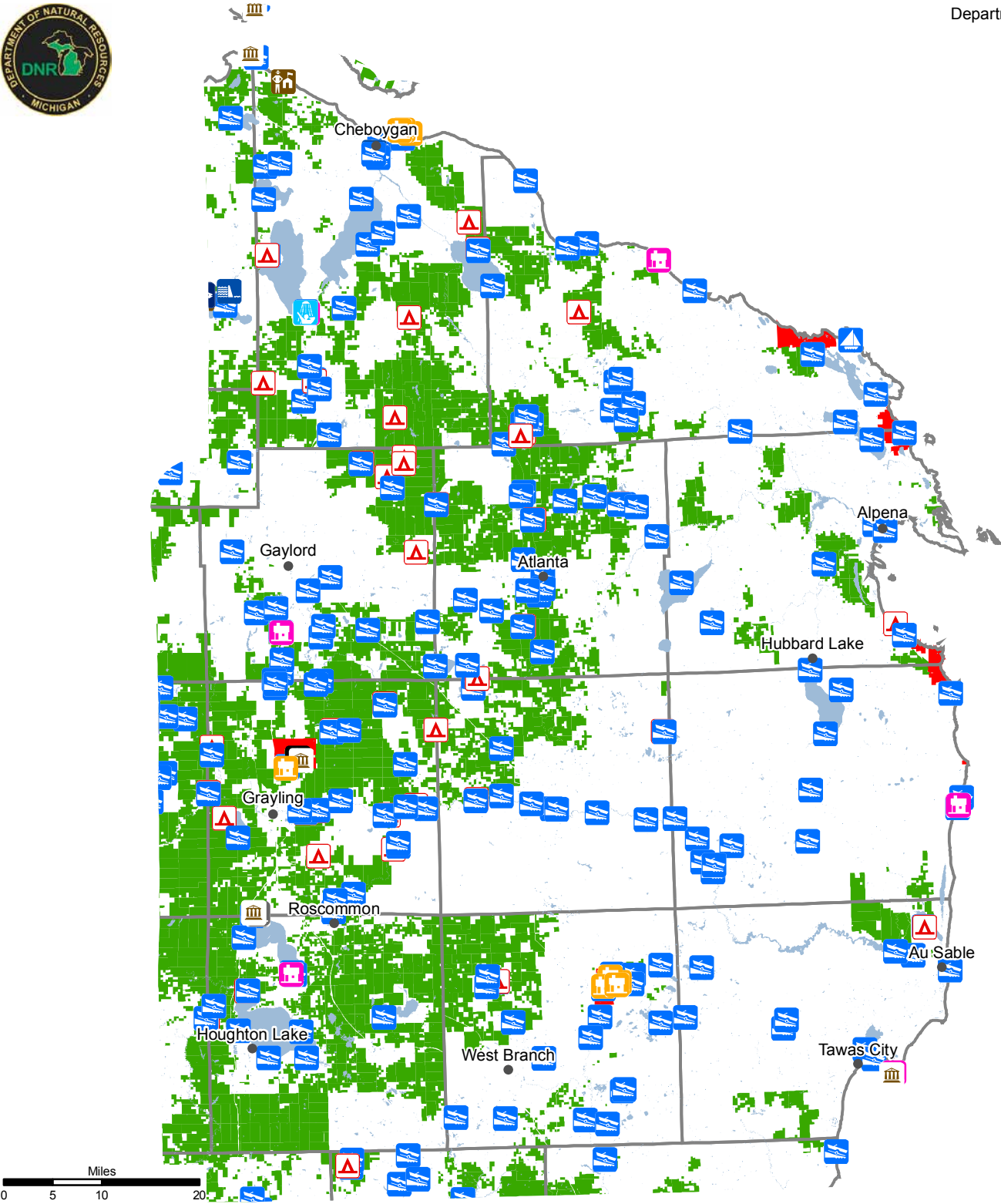


Legend

- |                  |               |                   |
|------------------|---------------|-------------------|
| • Cities         | State Lands   | Granted Easements |
| Counties         | State Forests |                   |
| Lakes and Rivers | State Parks   |                   |
|                  | WLD DIV Lands |                   |

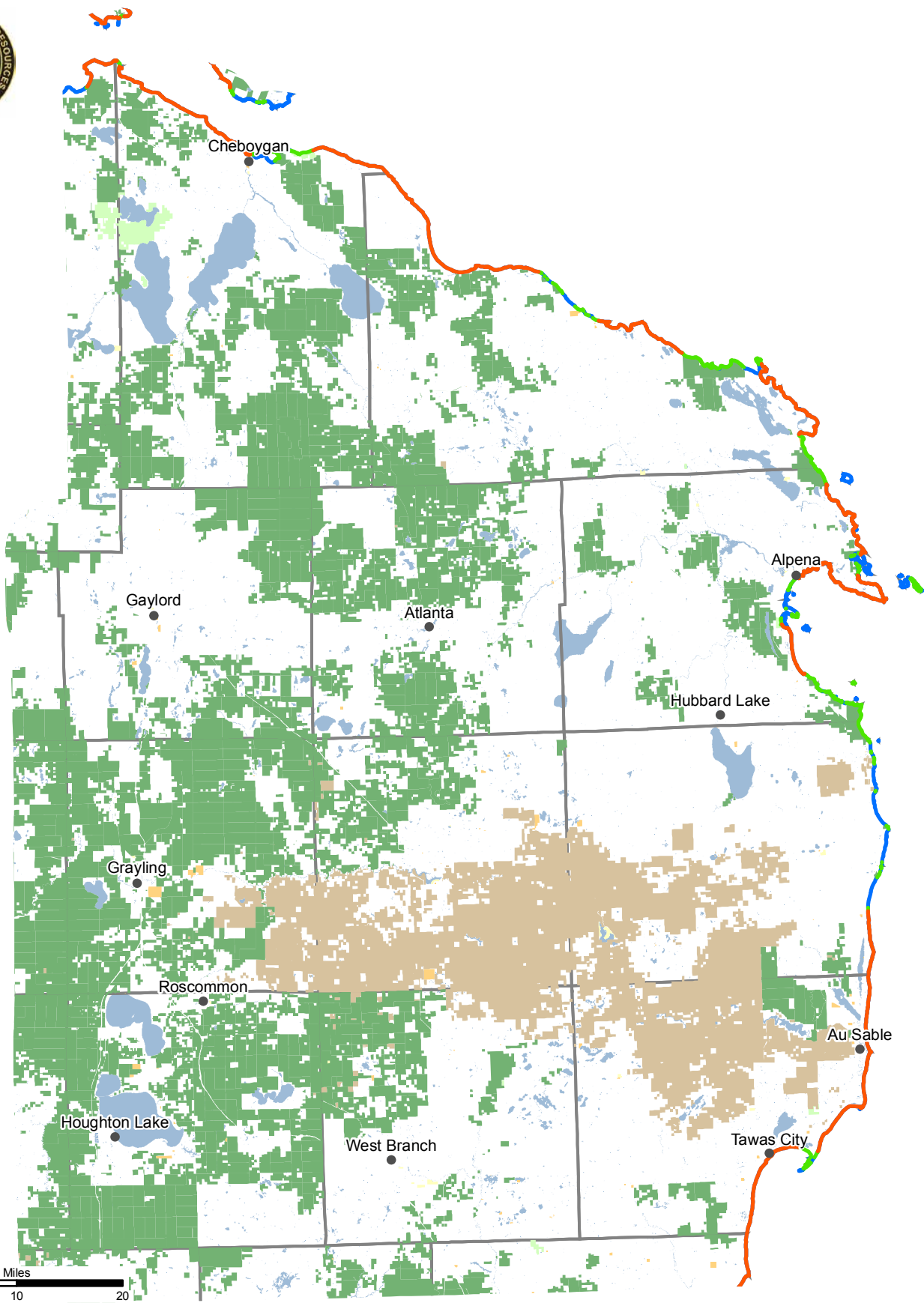
# DNR Facilities Northeast Region

Resource Assessment Unit  
Forest Resources Division  
Department of Natural Resources



## Legend

- |                  |                        |                    |                              |
|------------------|------------------------|--------------------|------------------------------|
| • Cities         | <b>DNR Facilities</b>  | Historic Structure | Rustic Cabin                 |
| Counties         | Barn/Riding Stable     | Lock               | Rustic Campground            |
| Lakes and Rivers | Beach House/Bath House | Lodge              | Shooting Range               |
| State Lands      | Boating Access Site    | Mini Cabin         | Visitor Center/Nature Center |
| State Forests    | Harbor                 | Museum             |                              |
| State Parks      | Hatchery               | Nursery            |                              |
| WLD DIV Lands    |                        |                    |                              |



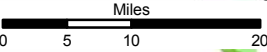
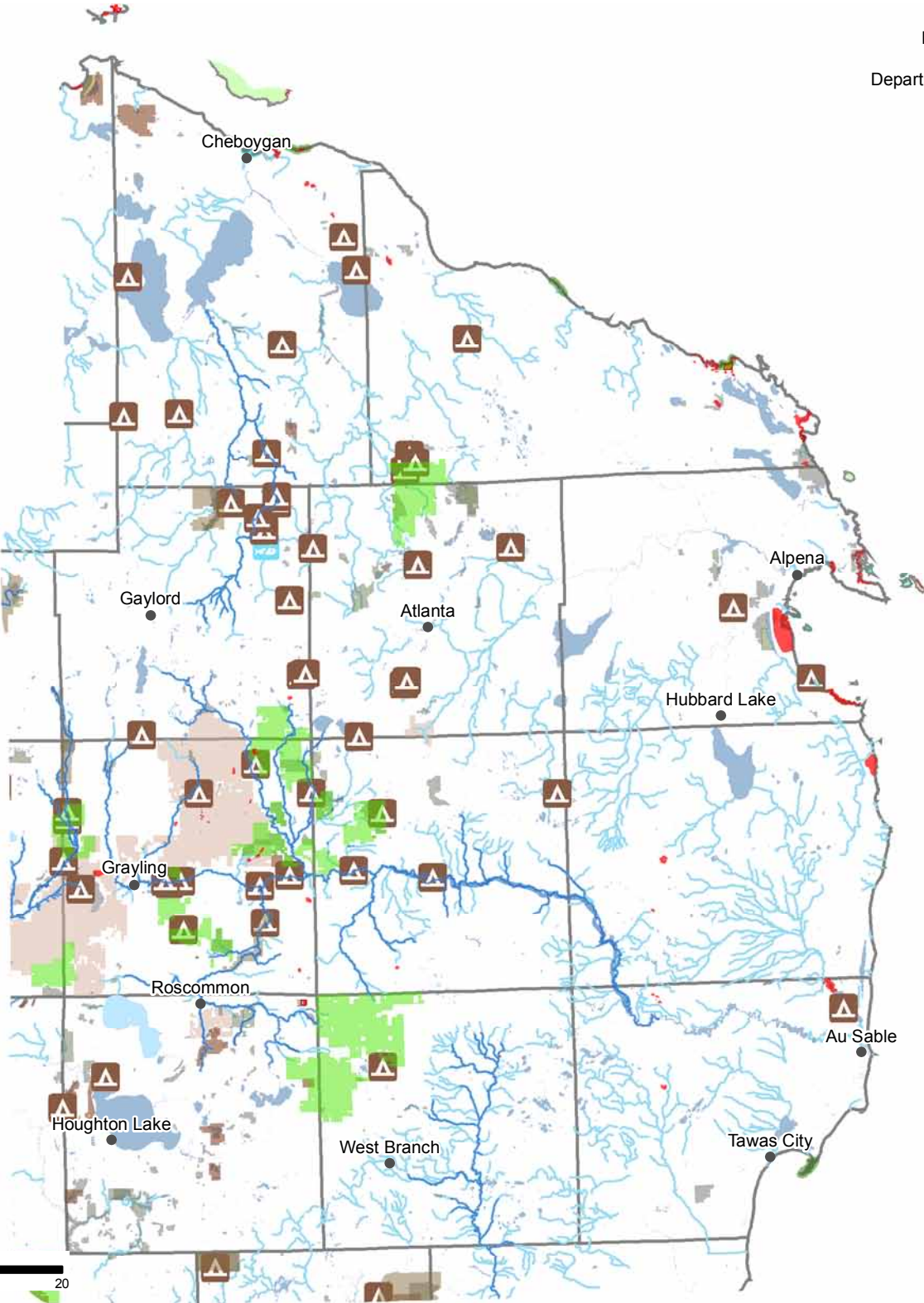
Legend

- |                    |                                |   |
|--------------------|--------------------------------|---|
| ● Cities           | ■ The Nature Conservancy Lands | Great Lakes Water Access                    |
| □ Counties         | ■ County                       | ■ No Public Water Access                    |
| ■ Lakes and Rivers | ■ Local                        | ■ Public Water Access                       |
| ■ State Land       | ■ NGO                          | ■ Continuous Shoreline greater than 5 miles |
| ■ Federal Land     | ■ Other                        | ■ without public water access               |



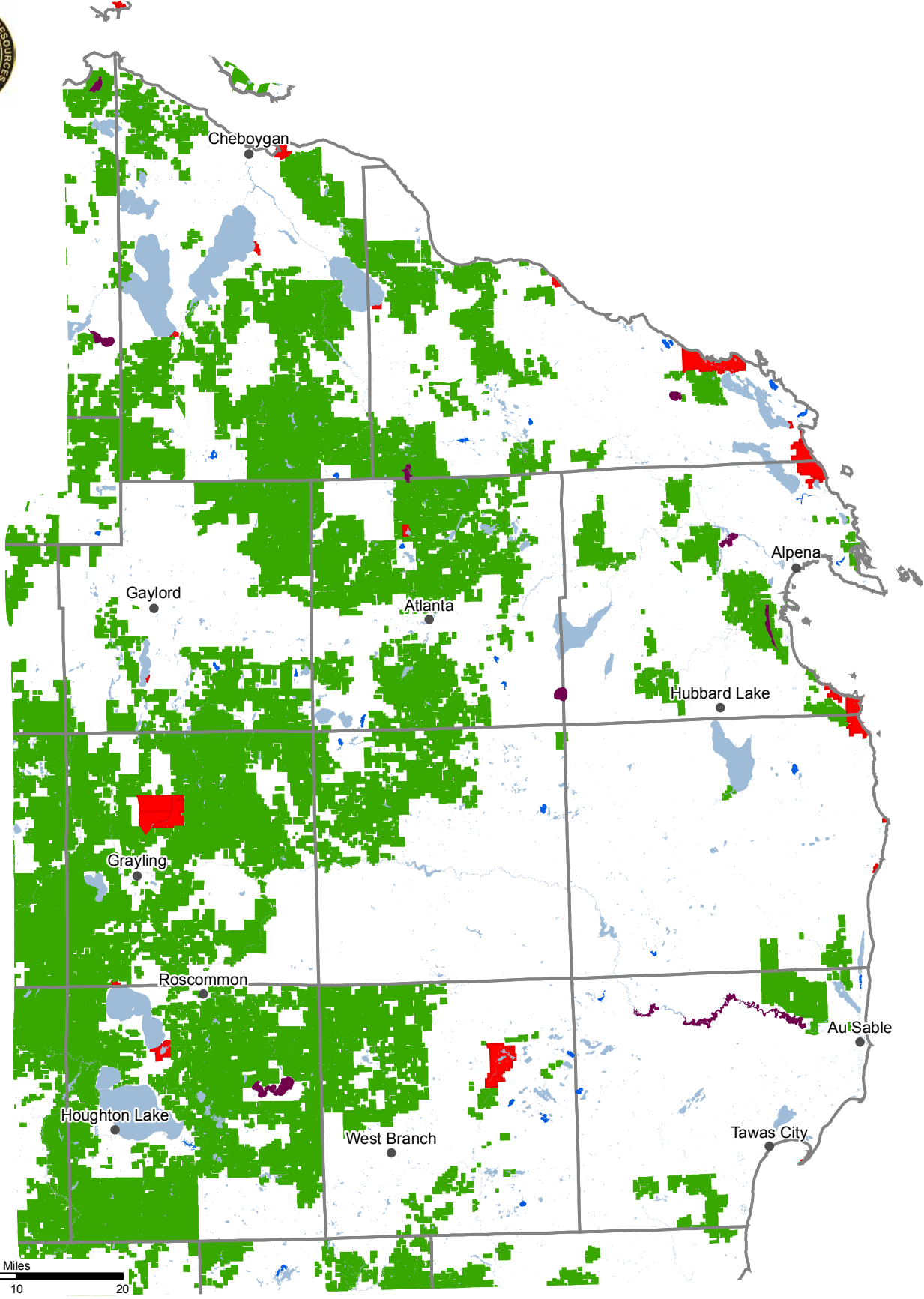


Resource Assessment Unit  
Forest Resources Division  
Department of Natural Resources



- Legend
- |  |  |   |
|--|--|---|
| <ul style="list-style-type: none"><li>● Cities</li><li>□ Counties</li><li>■ Lakes and Rivers</li><li>■ Ecological Reference Areas</li><li>■ Natural Rivers Zoning District</li><li>■ Natural Rivers Vegetative Buffer</li><li>■ Critical Dunes</li><li>■ Coastal Environmental Areas</li><li>■ Natural Areas Legally Dedicated</li></ul> | <ul style="list-style-type: none"><li>■ Dedicated Management Areas</li><li>■ Kirtland Warbler Habitat</li><li>■ Critical Coastal Habitat (Piping Plover)</li><li>■ Fishing Access Sites</li><li>■ Campgrounds</li><li>■ Mineral Resource Polygon</li><li>■ Mineral Resource Points</li><li>■ Contiguous Resource Areas</li><li>■ Visual Management Areas</li></ul> | <ul style="list-style-type: none"><li>■ Wild &amp; Scenic Rivers (USFS Lands)</li><li>■ IFMAP Special Conservation Areas</li><li>■ Great Lakes Islands</li><li>■ Wildlife Research Areas</li><li>■ Research, Development, and Military Lands</li><li>■ Wildlife Management Areas</li><li>■ Deer Wintering Areas</li><li>■ Cold Water Lakes</li><li>■ Cold Water Streams</li></ul> |
|--|--|---|





Legend

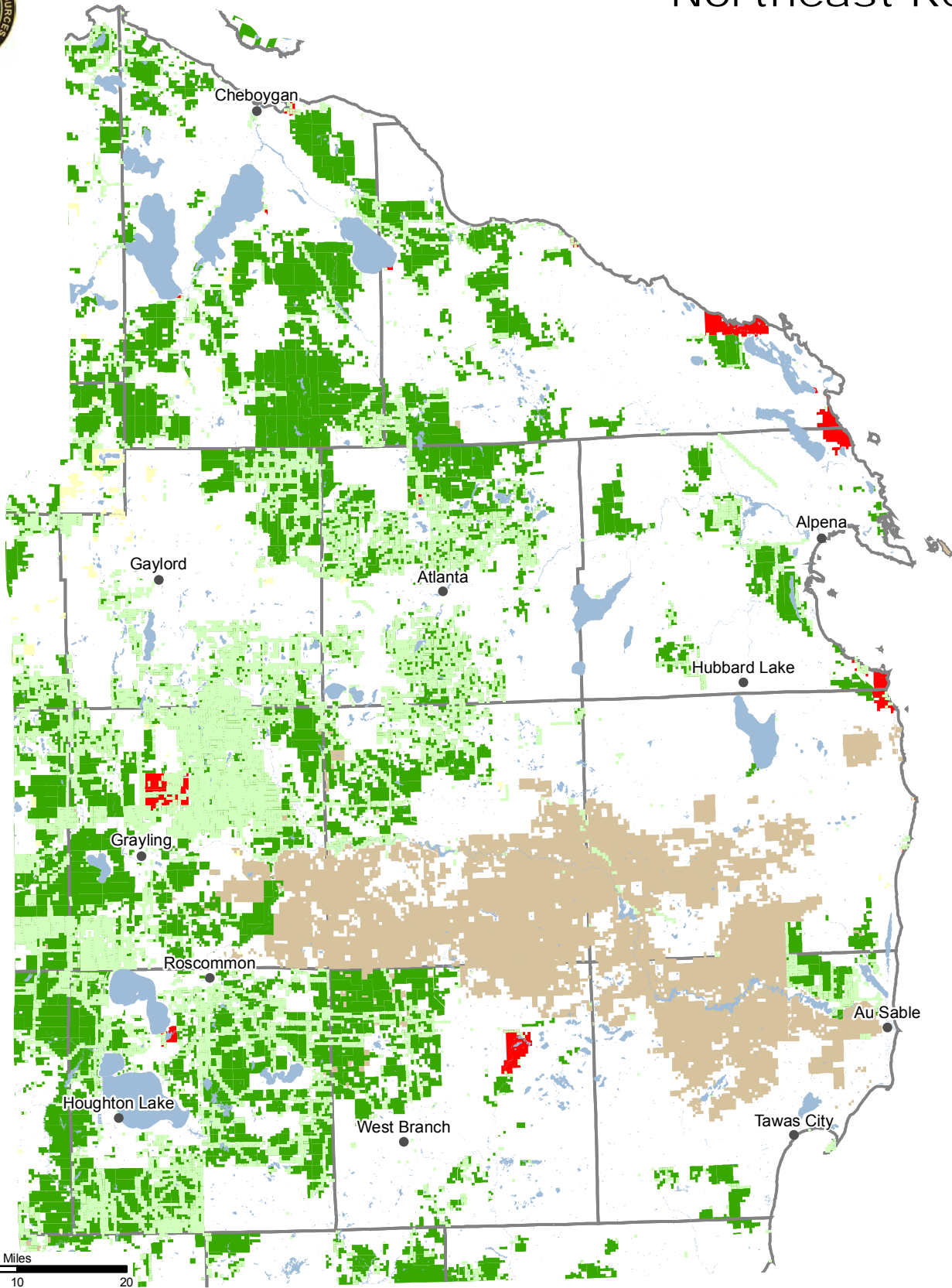
- |                    |                 |   |
|--------------------|-----------------|---|
| • Cities           | State Lands     | ■ Lakes Between 100 and 500 Acres wo Access |
| □ Counties         | ■ State Forests | ■ Lakes Greater than 500 Acres wo Access    |
| ■ Lakes and Rivers | ■ State Parks   |   |
| ■ WLD DIV Lands    |                 |   |



# State, Commercial, and Federal Forests



## Northeast Region



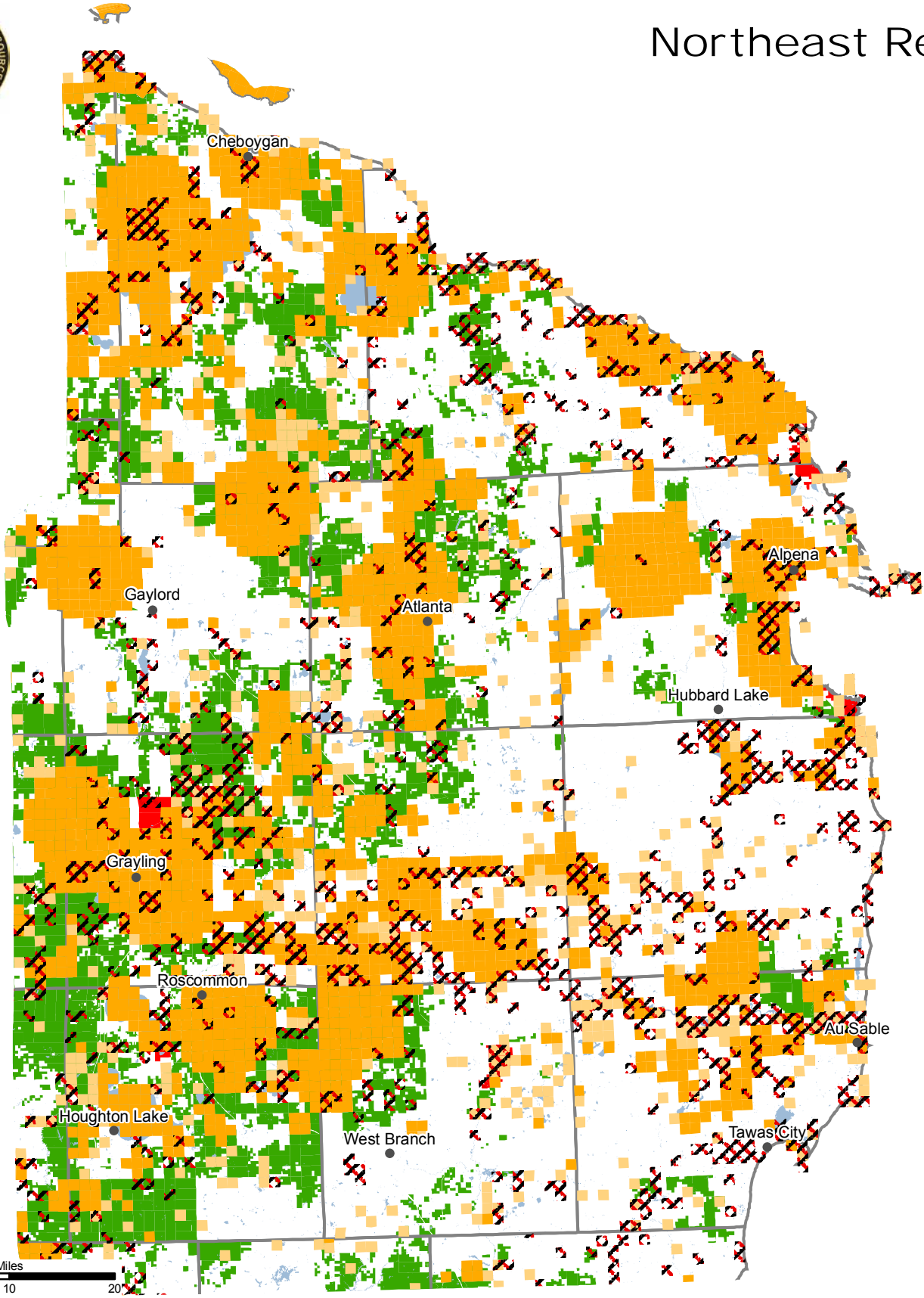
### Legend

- Cities
- ▭ Counties
- ▭ Lakes and Rivers All
- ▭ State Lands
  - ▭ State Forests
  - ▭ State Parks
  - ▭ WLD DIV Lands
- ▭ Conservation Easements
- ▭ Commercial Forests
- ▭ Federal Lands

# DNR Natural and Cultural Features

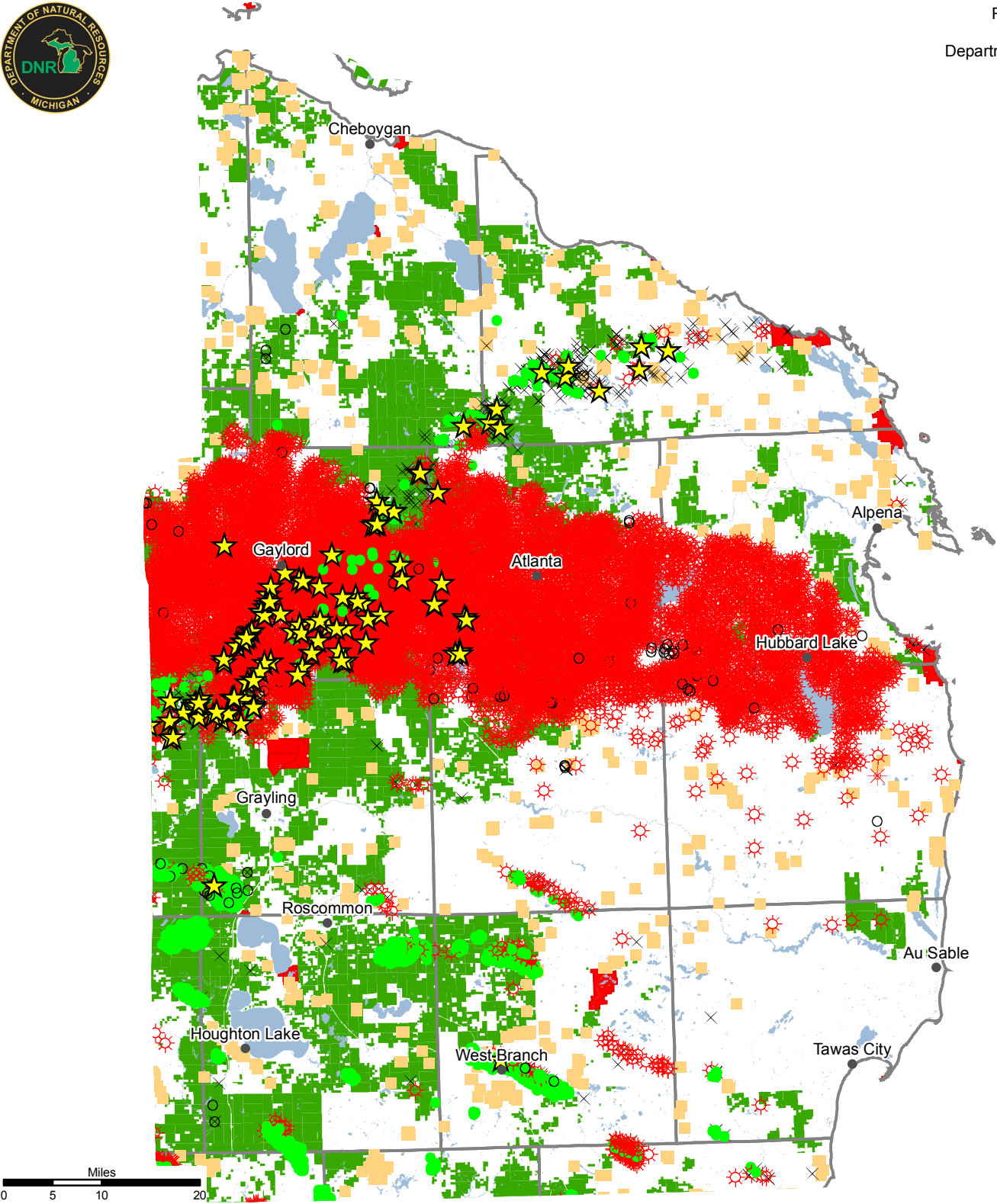


## Northeast Region



### Legend

- |                    |               |   |
|--------------------|---------------|---|
| • Cities           | State Lands   | Threatened_Endangered_or_Rare_Species_Sites |
| □ Counties         | State Forests | Rare_Natural_Community_Sites                |
| ■ Lakes and Rivers | State Parks   | Archaeology Sites                           |
| ■ WLD DIV Lands    |               |   |



Legend

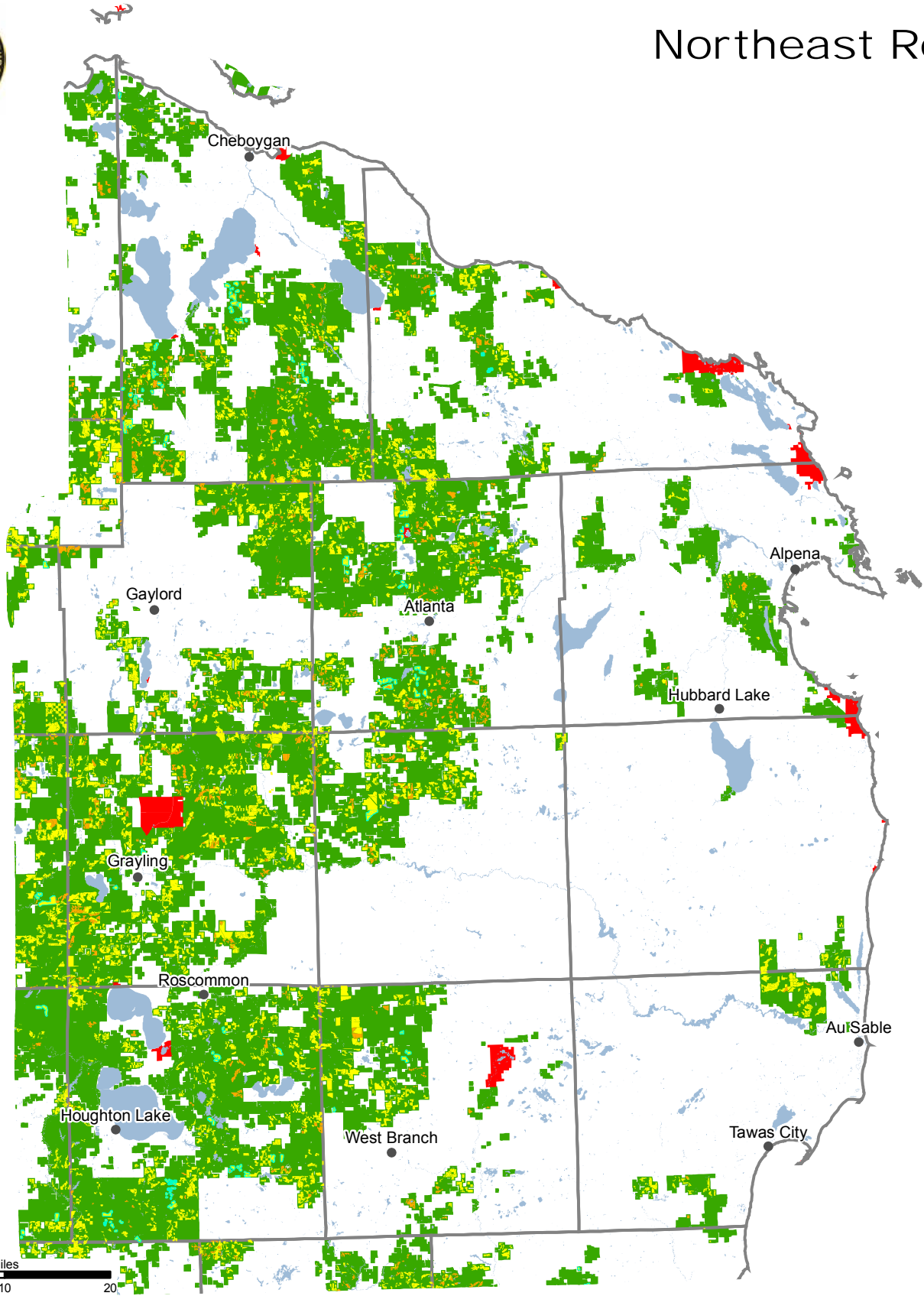
- |                    |                                     |   |
|--------------------|-------------------------------------|---|
| ● Cities           | ● Oil                               | ★ Oil & Gas Well Hydrogen Sulfide Wells |
| □ Counties         | ⊗ Natural Gas                       | × Oil & Gas Well Surface Locations      |
| ■ Lakes and Rivers | ⊗ Gas Condensate                    | ■ Sand & Gravel Pits                    |
| ■ State Lands      | ⊗ Gas Injection                     |   |
| ■ State Forests    | ⊗ Gas Storage                       |   |
| ■ State Parks      | ⊗ Gas Production and Brine Disposal |   |
| ■ WLD DIV Lands    | ○ Permitted Well Location           |   |



# DNR Timber Management 2008-2012



## Northeast Region



Legend

- Cities
- Counties
- Lakes and Rivers

State Lands

- State Forests
- State Parks
- WLD DIV Lands

Timber Sales

- Closed Timber Sale
- Open Timber Sale

Timber Management History

- Successful Completion

Resource Assessment Unit  
Forest Resources Division  
Department of Natural Resources