

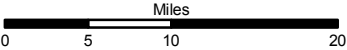
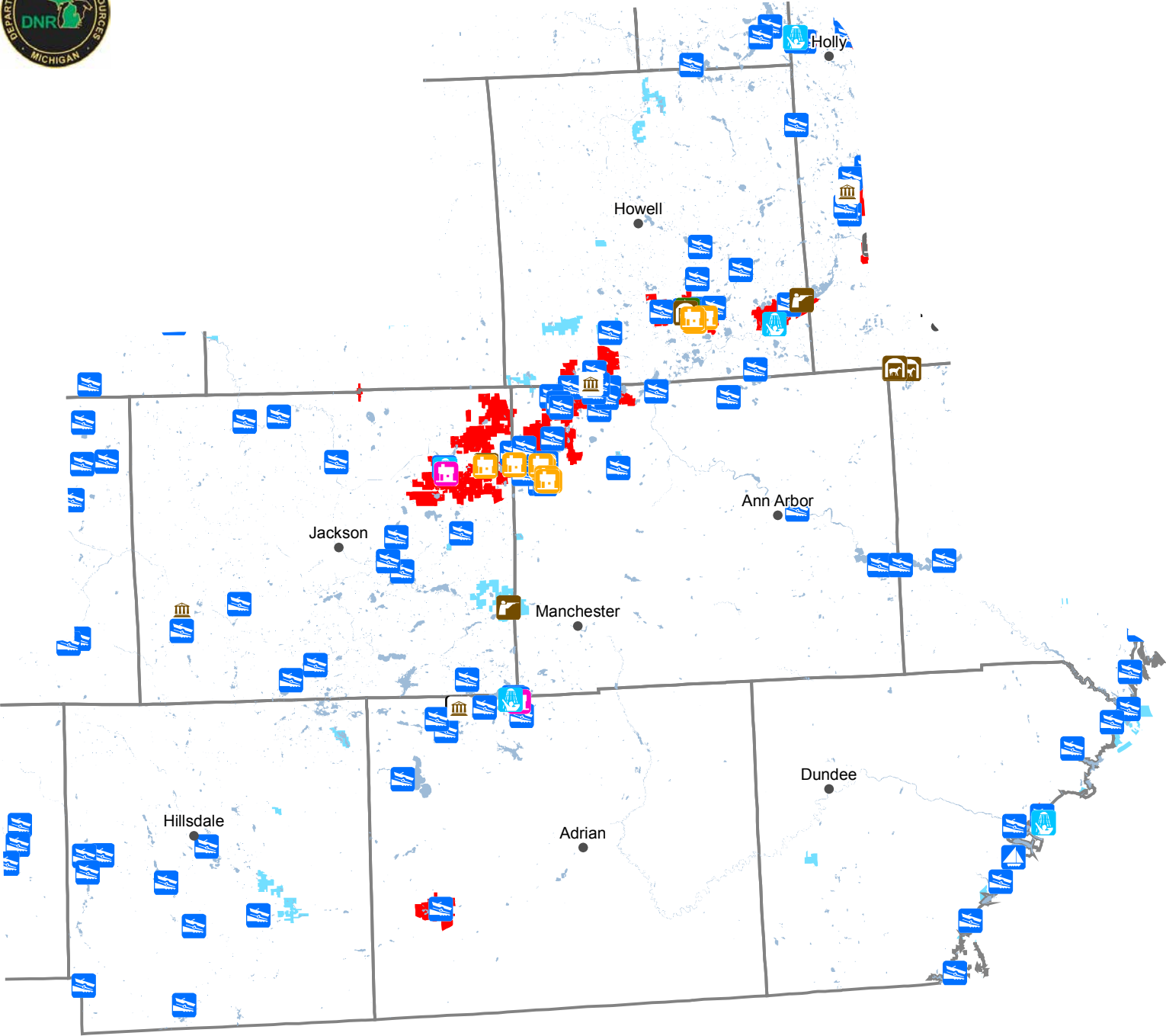
Legend

- Cities
- Counties
- Lakes and Rivers
- State Lands
- State Forests
- State Parks
- WLD DIV Lands
- Granted Easements



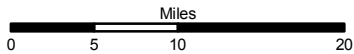
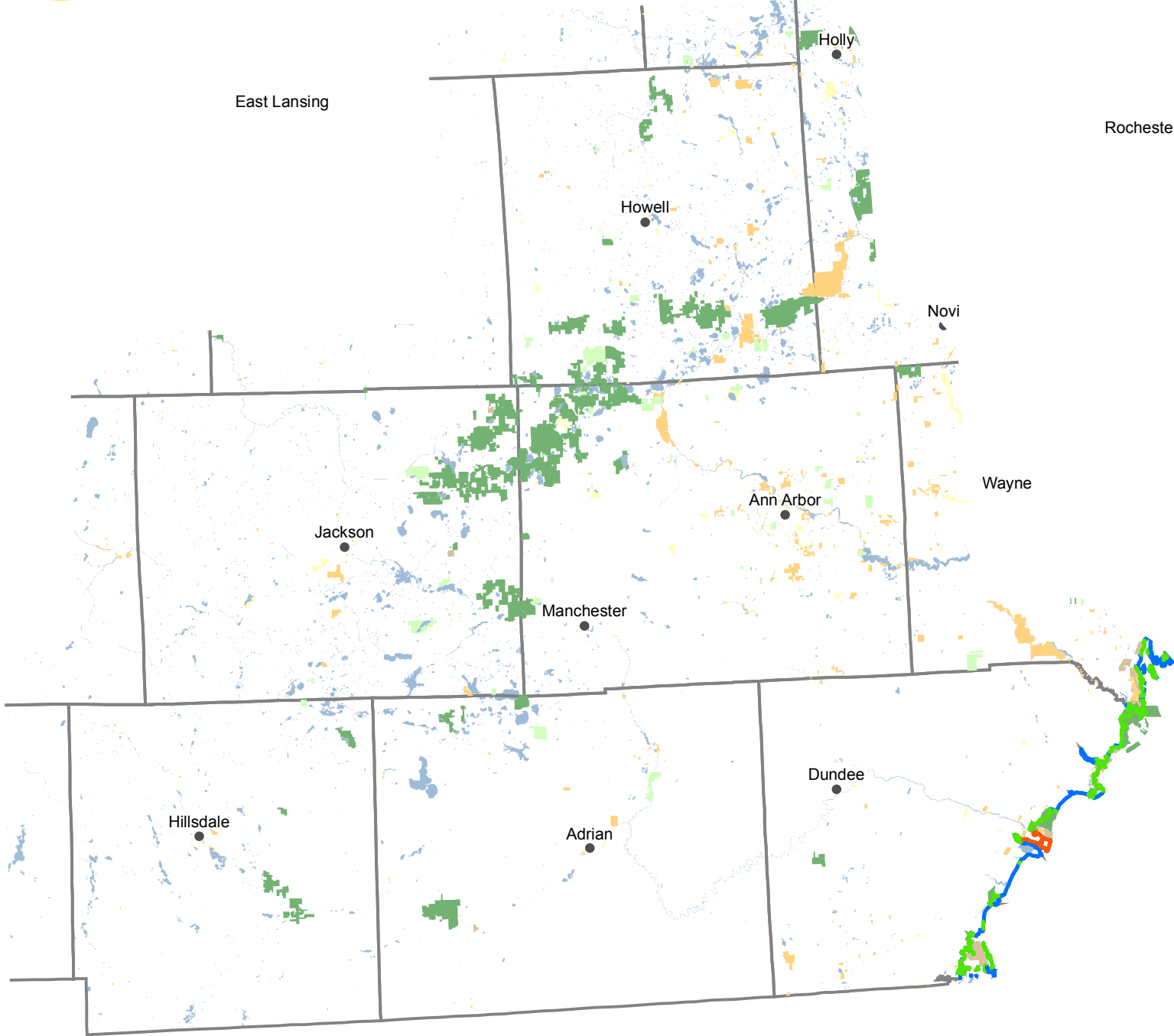
# DNR Facilities    South Central Region

Resource Assessment Unit  
Forest Resources Division  
Department of Natural Resources



## Legend

- |                  |                        |                    |                              |
|------------------|------------------------|--------------------|------------------------------|
| • Cities         | <b>DNR Facilities</b>  | Historic Structure | Rustic Cabin                 |
| Counties         | Barn/Riding Stable     | Lock               | Rustic Campground            |
| Lakes and Rivers | Beach House/Bath House | Lodge              | Shooting Range               |
| State Lands      | Boating Access Site    | Mini Cabin         | Visitor Center/Nature Center |
| State Forests    | Harbor                 | Museum             |                              |
| State Parks      | Hatchery               | Nursery            |                              |
| WLD DIV Lands    |                        |                    |                              |



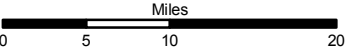
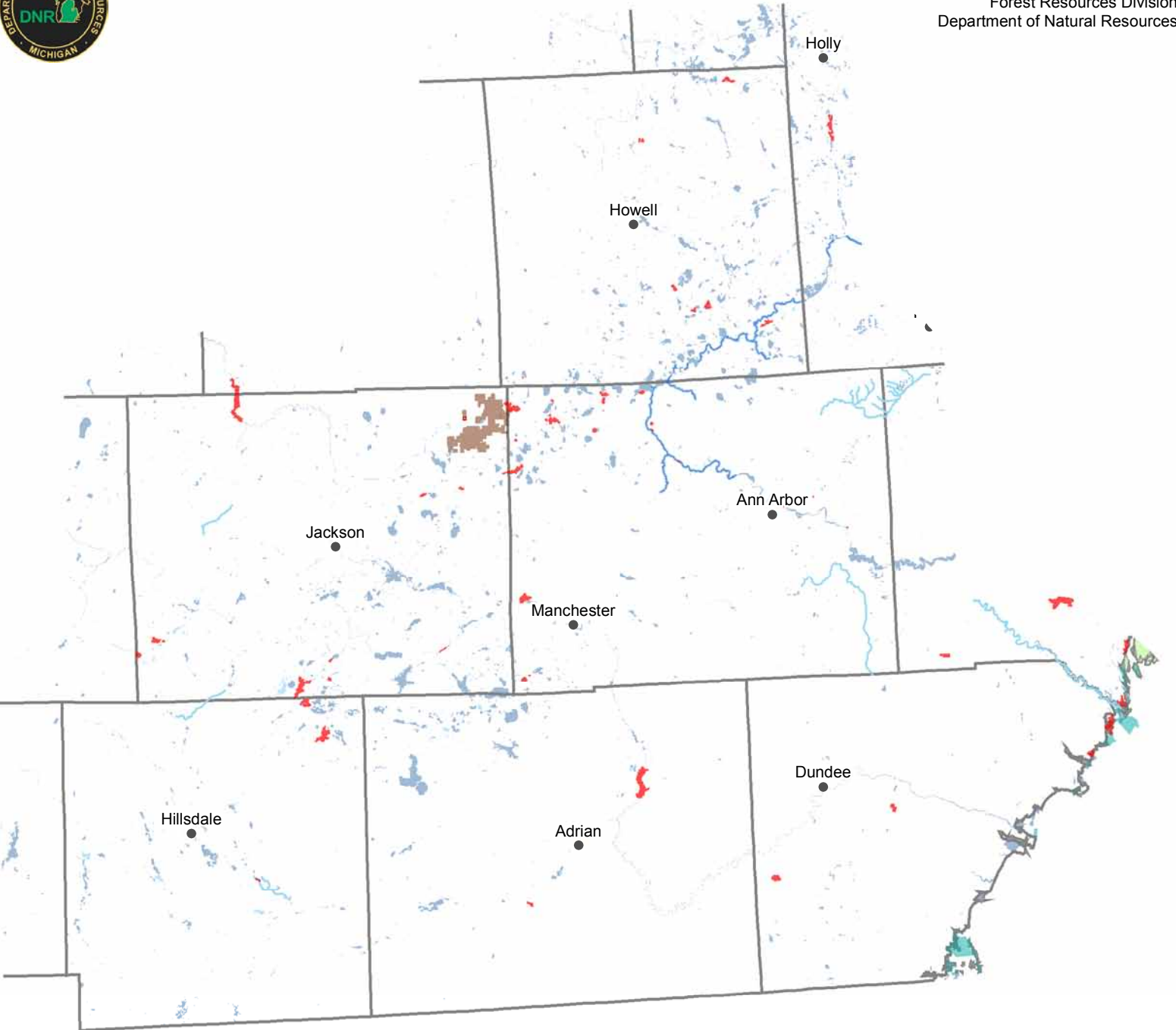
Legend

- |                    |                                |   |
|--------------------|--------------------------------|---|
| ● Cities           | ■ The Nature Conservancy Lands | Great Lakes Water Access                    |
| □ Counties         | ■ County                       | — No Public Water Access                    |
| ■ Lakes and Rivers | ■ Local                        | — Public Water Access                       |
| ■ State Land       | ■ NGO                          | — Continuous Shoreline greater than 5 miles |
| ■ Federal Land     | ■ Other                        | — without public water access               |





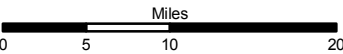
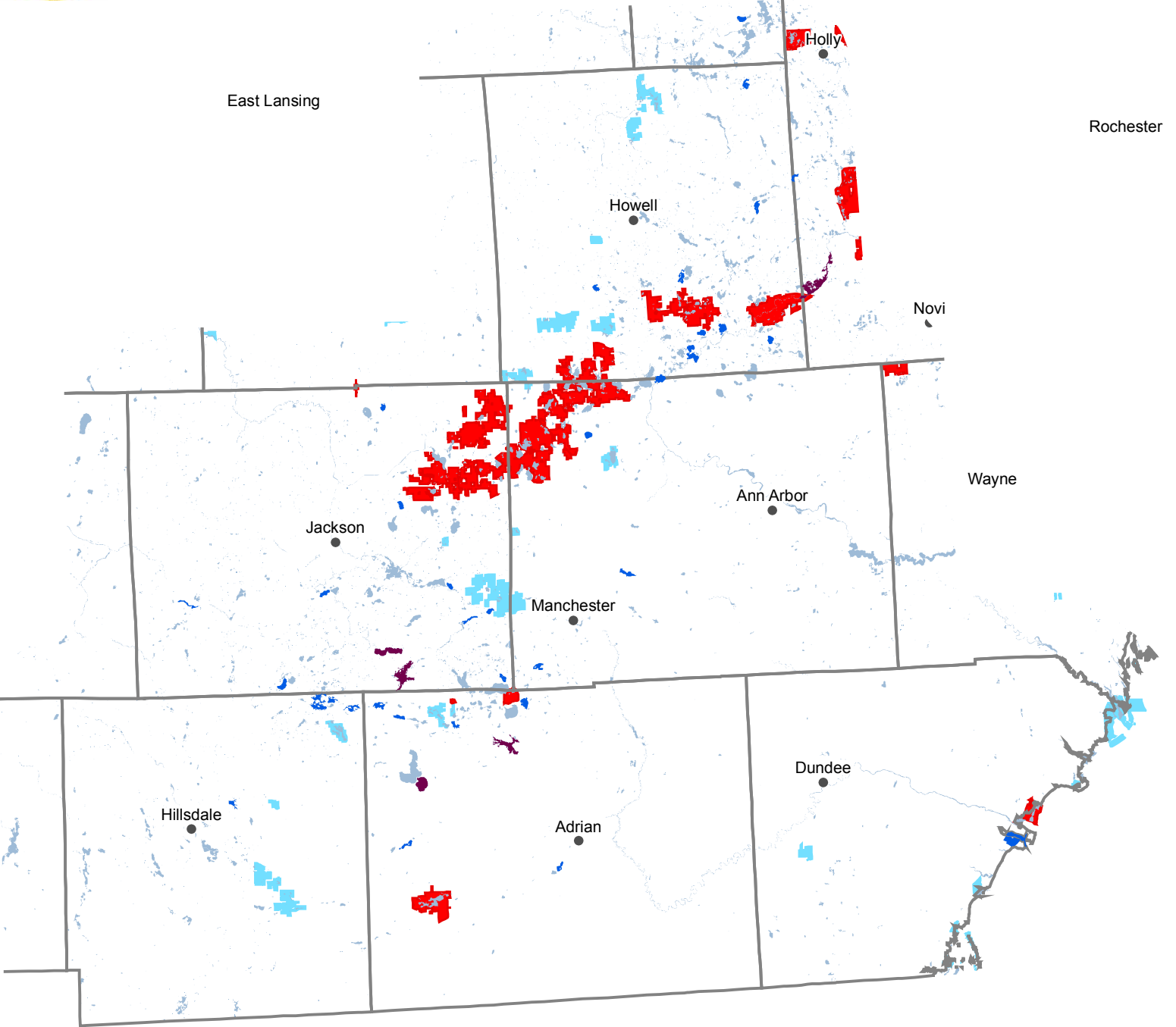
Resource Assessment Unit  
Forest Resources Division  
Department of Natural Resources



Legend

- |                                    |  |   |
|------------------------------------|--|---|
| ● Cities                           | ■ Dedicated Management Areas               | — Wild & Scenic Rivers (USFS Lands)         |
| □ Counties                         | ■ Kirtland Warbler Habitat                 | ■ IFMAP Special Conservation Areas          |
| ■ Lakes and Rivers                 | ■ Critical Coastal Habitat (Piping Plover) | ■ Great Lakes Islands                       |
| ■ Ecological Reference Areas       | ■ Fishing Access Sites                     | ■ Wildlife Research Areas                   |
| ■ Natural Rivers Zoning District   | ■ Campgrounds                              | ■ Research, Development, and Military Lands |
| ■ Natural Rivers Vegetative Buffer | ■ Mineral Resource Polygon                 | ■ Wildlife Management Areas                 |
| ■ Critical Dunes                   | ■ Mineral Resource Points                  | ■ Deer Wintering Areas                      |
| ■ Coastal Environmental Areas      | ■ Contiguous Resource Areas                | ■ Cold Water Lakes                          |
| ■ Natural Areas Legally Dedicated  | ■ Visual Management Areas                  | — Cold Water Streams                        |





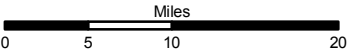
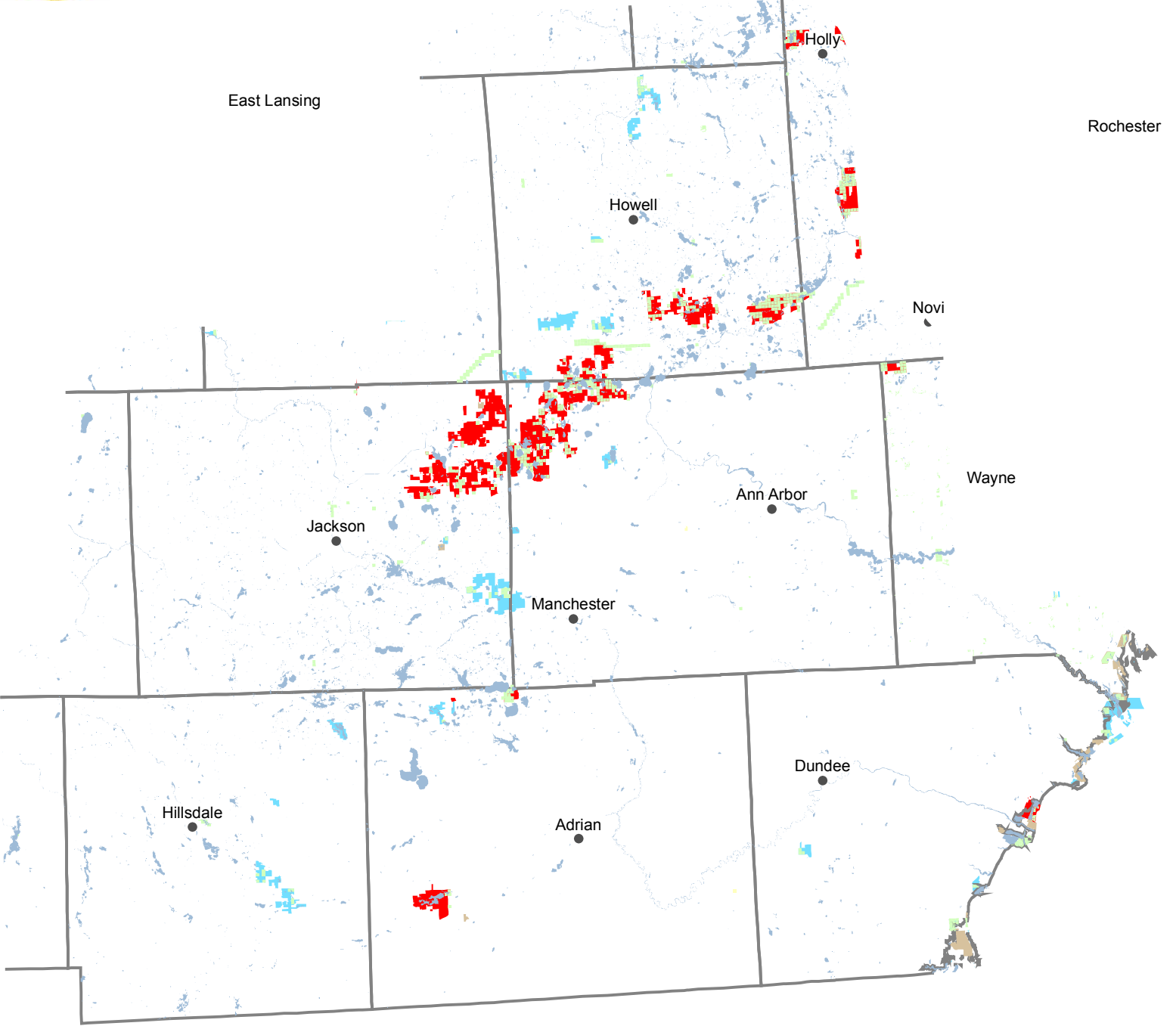
Legend

- |                    |                 |   |
|--------------------|-----------------|---|
| • Cities           | State Lands     | ■ Lakes Between 100 and 500 Acres wo Access |
| □ Counties         | ■ State Forests | ■ Lakes Greater than 500 Acres wo Access    |
| ■ Lakes and Rivers | ■ State Parks   |   |
|                    | ■ WLD DIV Lands |   |



# State, Commercial, and Federal Forests

## South Central Region



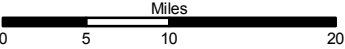
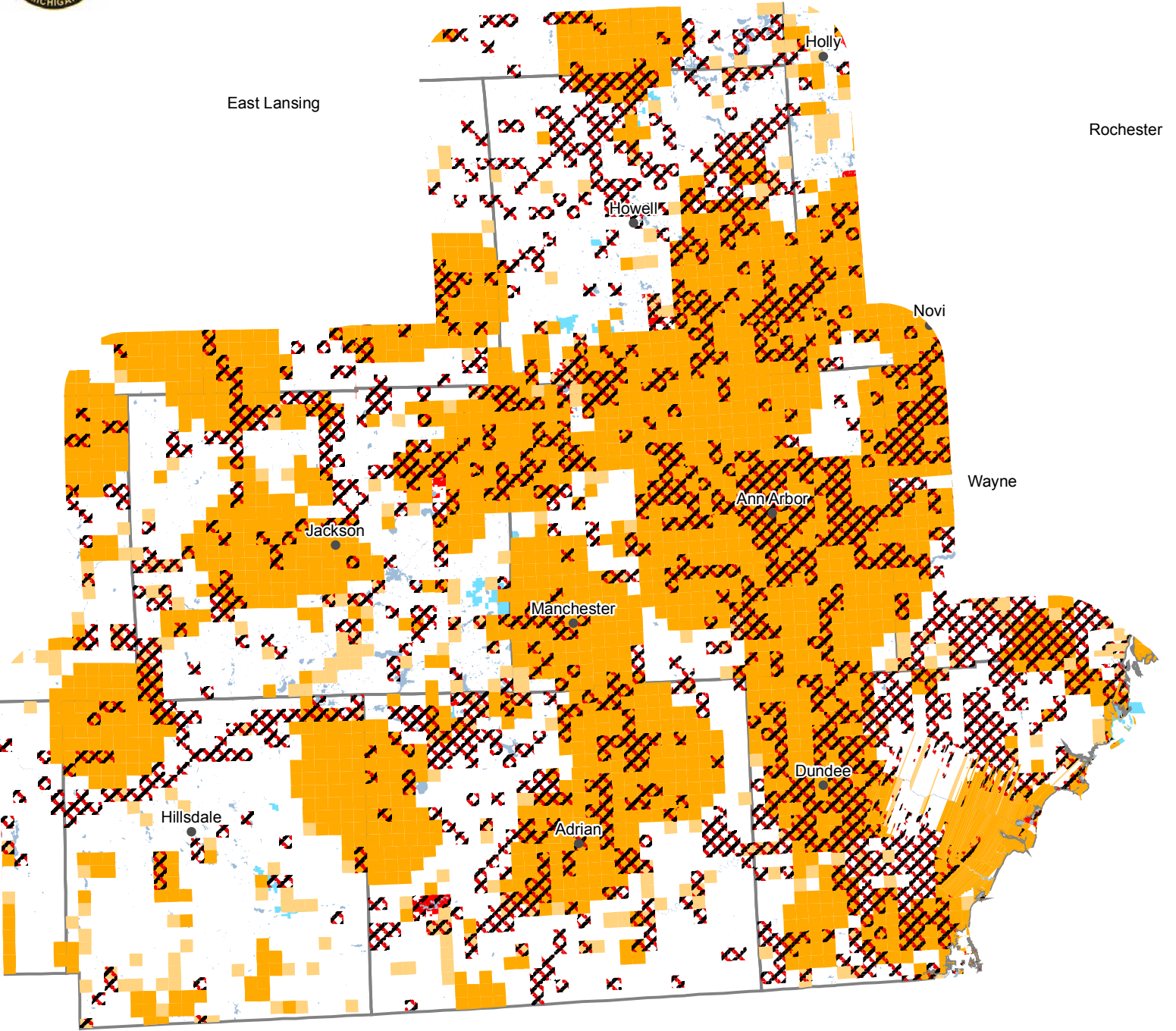
### Legend

- Cities
- Counties
- Lakes and Rivers All
- State Lands
- State Forests
- State Parks
- WLD DIV Lands
- Conservation Easements
- Commercial Forests
- Federal Lands



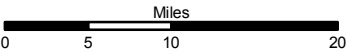
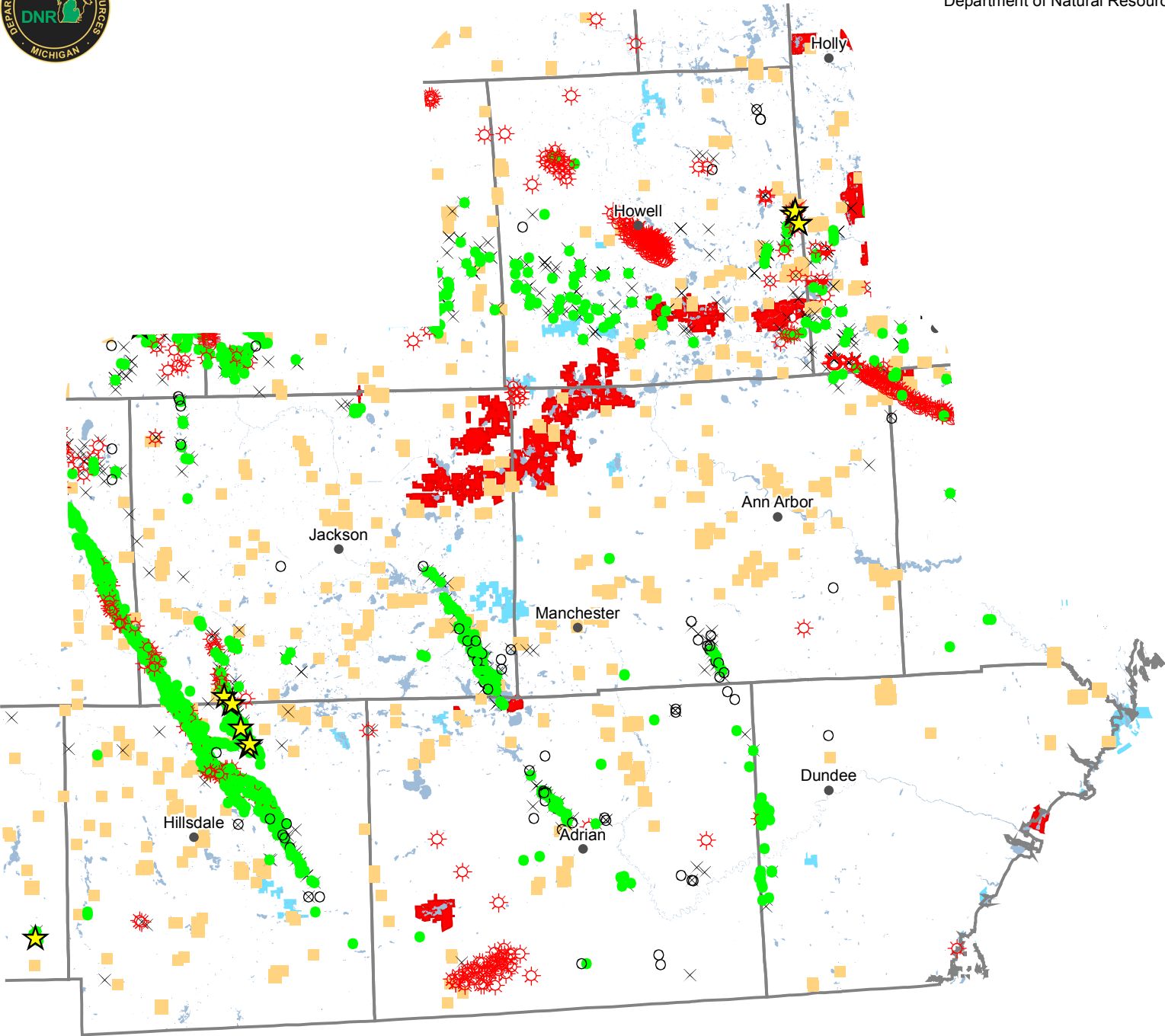
DNR Natural and Cultural Features

South Central Region



Legend

- |                    |               |   |
|--------------------|---------------|---|
| • Cities           | State Lands   | Threatened_Endangered_or_Rare_Species_Sites |
| □ Counties         | State Forests | Rare_Natural_Community_Sites                |
| ■ Lakes and Rivers | State Parks   | Archaeology Sites                           |
|                    | WLD DIV Lands |   |



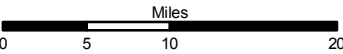
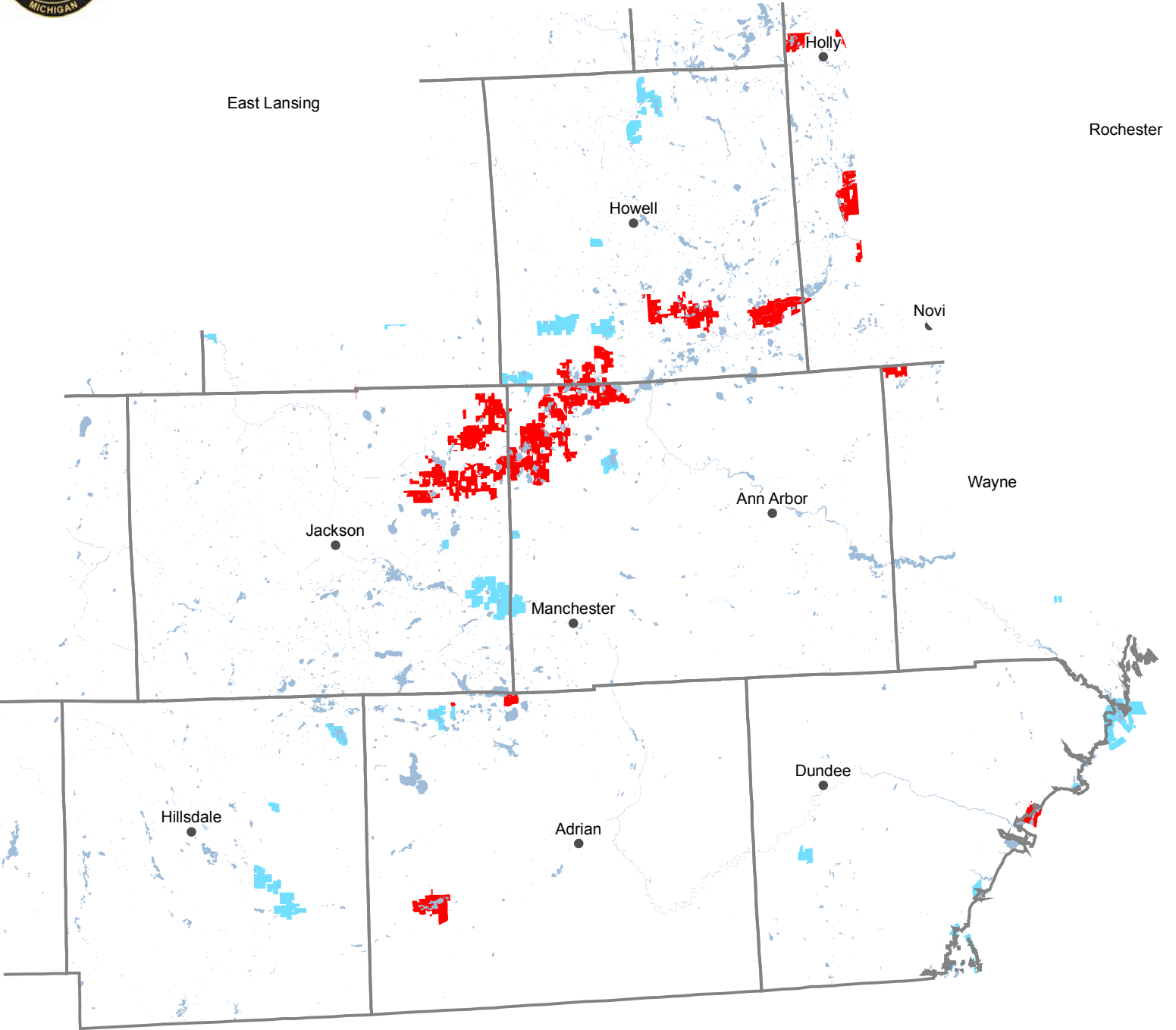
Legend

- |                    |                                     |   |
|--------------------|-------------------------------------|---|
| ● Cities           | ● Oil                               | ★ Oil & Gas Well Hydrogen Sulfide Wells |
| □ Counties         | ★ Natural Gas                       | × Oil & Gas Well Surface Locations      |
| ■ Lakes and Rivers | ★ Gas Condensate                    | ■ Sand & Gravel Pits                    |
| ■ State Lands      | ★ Gas Injection                     |   |
| ■ State Forests    | ★ Gas Storage                       |   |
| ■ State Parks      | ★ Gas Production and Brine Disposal |   |
| ■ WLD DIV Lands    | ○ Permitted Well Location           |   |

# DNR Timber Management 2008-2012



## South Central Region



Legend

- Cities
- Counties
- Lakes and Rivers

- State Forests
- State Parks
- WLD DIV Lands

- Timber Sales
  - Closed Timber Sale
  - Open Timber Sale

- Timber Management History
  - Successful Completion

Resource Assessment Unit  
Forest Resources Division  
Department of Natural Resources