

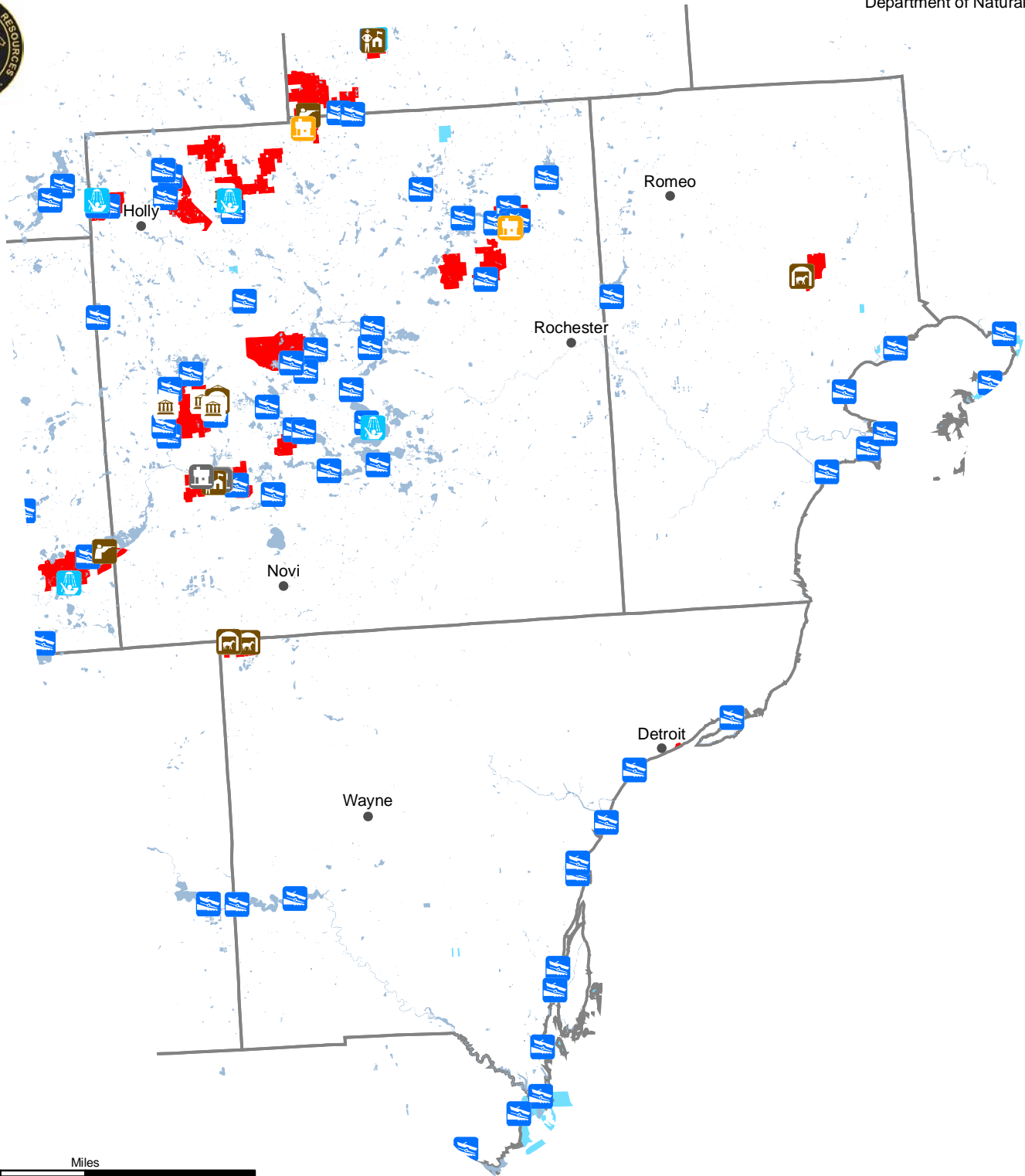
Legend

- Cities
- Counties
- Lakes and Rivers
- State Lands
- State Forests
- State Parks
- WLD DIV Lands
- Granted Easements

DNR Facilities

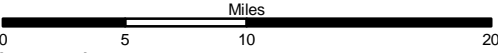
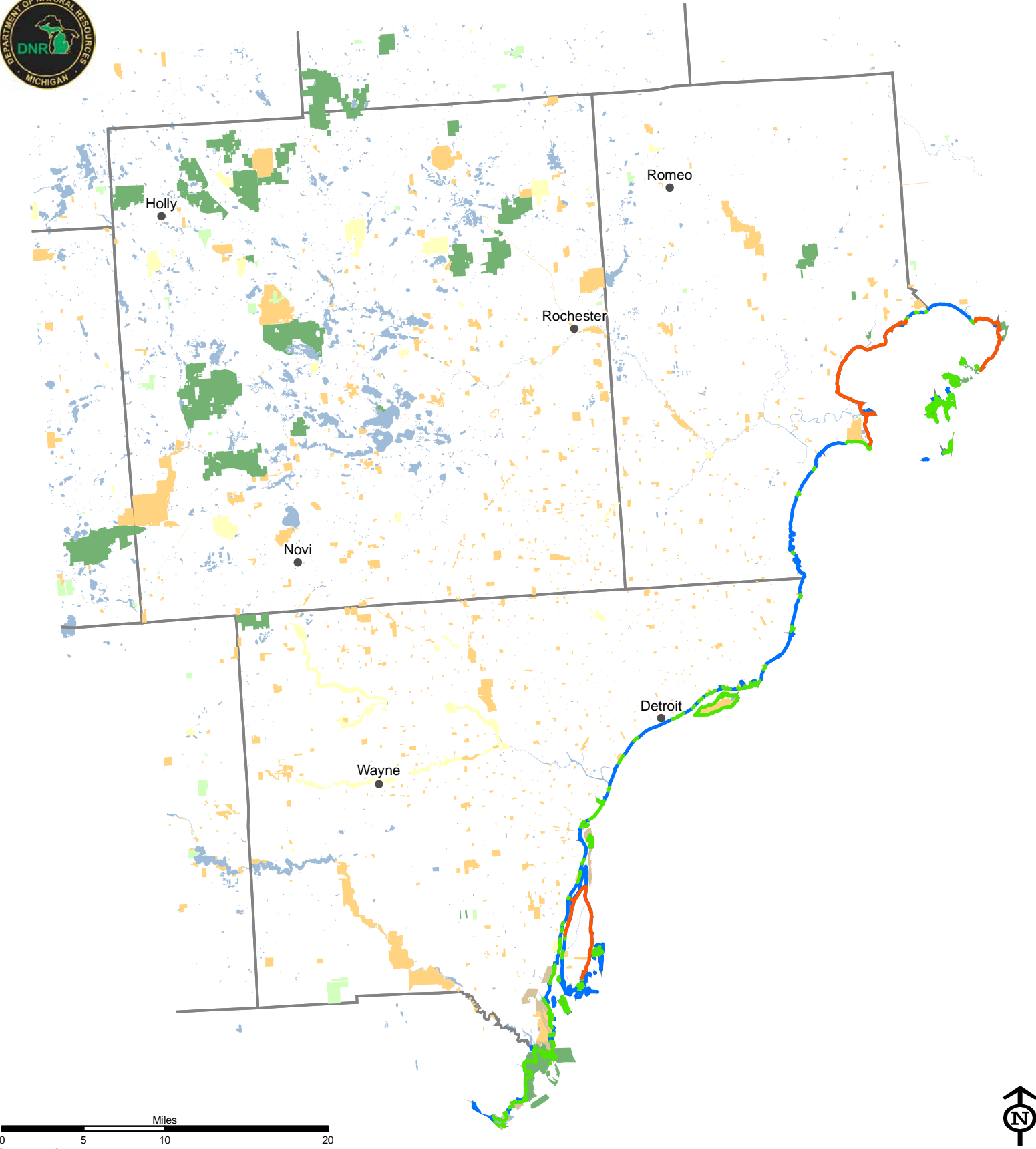
Southeast Region

December 5, 2012
Resource Assessment Unit
Forest Resources Division
Department of Natural Resources



Legend

- | | | | |
|------------------|------------------------|--------------------|------------------------------|
| • Cities | DNR Facilities | Historic Structure | Rustic Cabin |
| Counties | Barn/Riding Stable | Lock | Rustic Campground |
| Lakes and Rivers | Beach House/Bath House | Lodge | Shooting Range |
| State Lands | Boating Access Site | Mini Cabin | Visitor Center/Nature Center |
| State Forests | Harbor | Museum | |
| State Parks | Hatchery | Nursery | |
| WLD DIV Lands | | | |



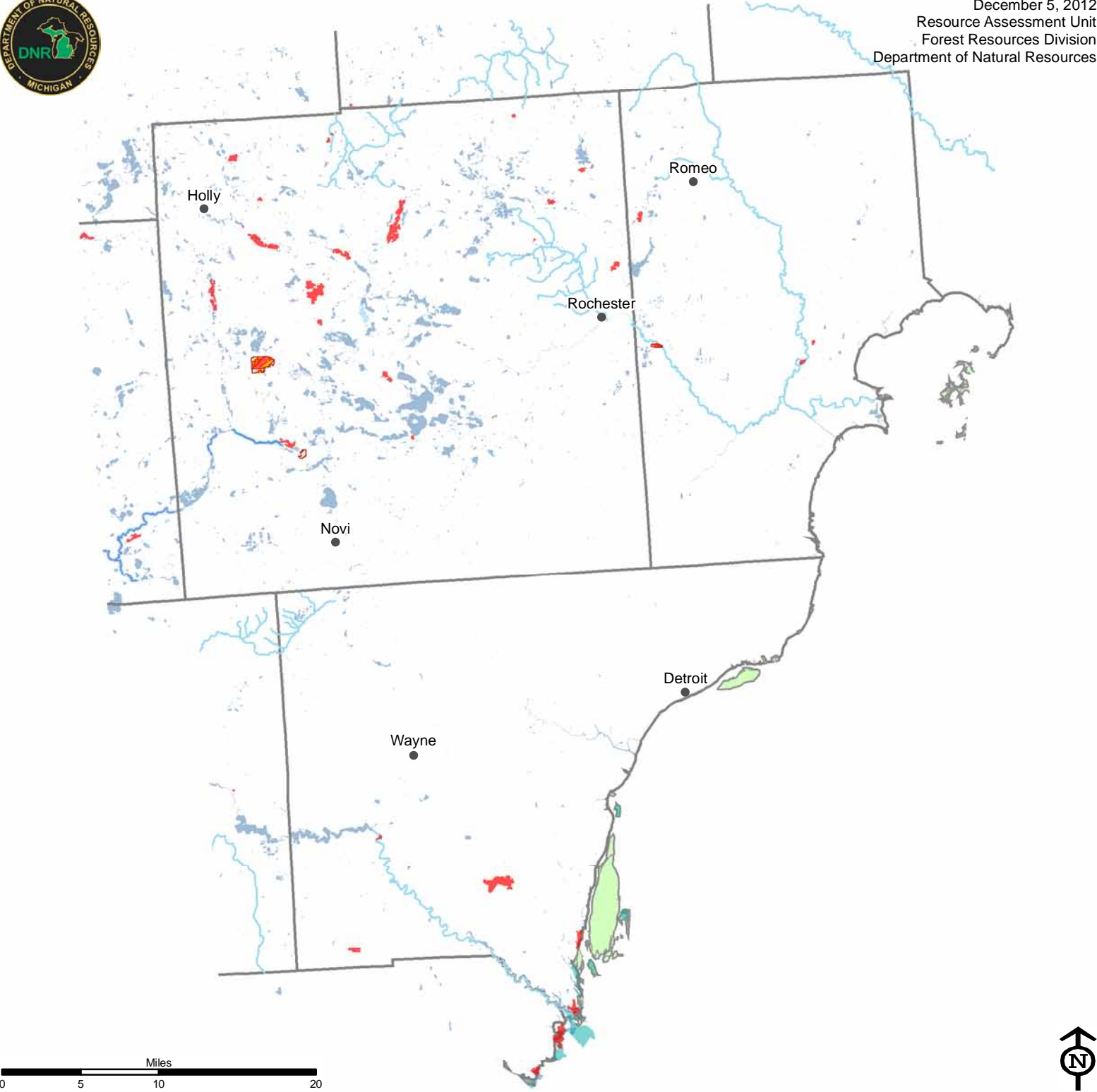
Legend

- | | | |
|--------------------|--------------------------------|---|
| ● Cities | ■ The Nature Conservancy Lands | Great Lakes Water Access |
| □ Counties | ■ County | — No Public Water Access |
| ■ Lakes and Rivers | ■ Local | — Public Water Access |
| ■ State Land | ■ NGO | — Continuous Shoreline greater than 5 miles |
| ■ Federal Land | ■ Other | — without public water access |

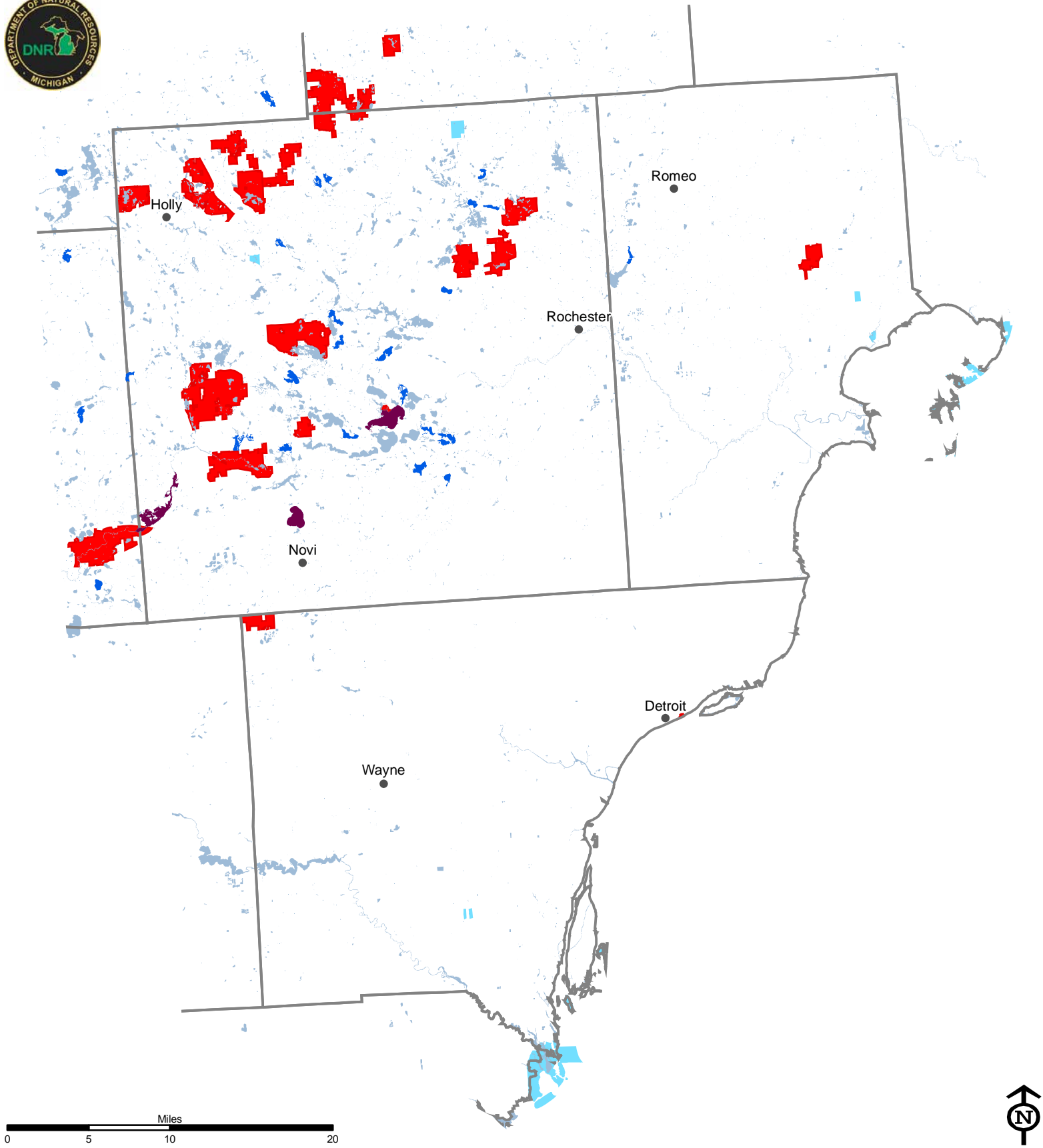




December 5, 2012
Resource Assessment Unit
Forest Resources Division
Department of Natural Resources



- Legend
- | | | |
|------------------------------------|--|---|
| ● Cities | ■ Dedicated Management Areas | — Wild & Scenic Rivers (USFS Lands) |
| □ Counties | ■ Kirtland Warbler Habitat | ■ IFMAP Special Conservation Areas |
| ■ Lakes and Rivers | ■ Critical Coastal Habitat (Piping Plover) | ■ Great Lakes Islands |
| ■ Ecological Reference Areas | ■ Fishing Access Sites | ■ Wildlife Research Areas |
| ■ Natural Rivers Zoning District | ■ Campgrounds | ■ Research, Development, and Military Lands |
| ■ Natural Rivers Vegetative Buffer | ■ Mineral Resource Polygon | ■ Wildlife Management Areas |
| ■ Critical Dunes | ■ Mineral Resource Points | ■ Deer Wintering Areas |
| ■ Coastal Environmental Areas | ■ Contiguous Resource Areas | ■ Cold Water Lakes |
| ■ Natural Areas Legally Dedicated | ■ Visual Management Areas | — Cold Water Streams |



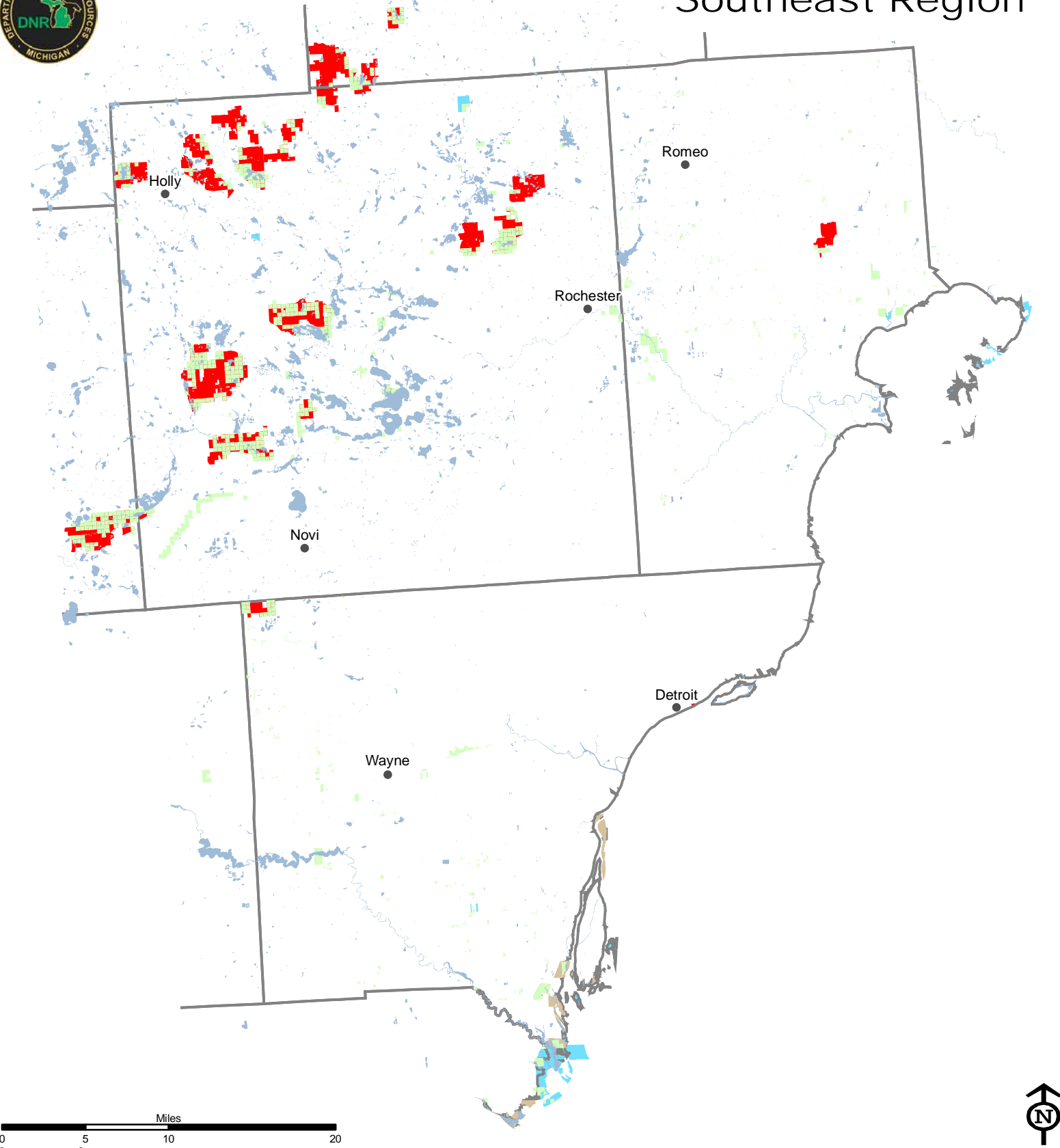
Legend

- Cities
- Counties
- Lakes and Rivers
- State Lands
- State Forests
- State Parks
- WLD DIV Lands
- Lakes Between 100 and 500 Acres wo Access
- Lakes Greater than 500 Acres wo Access

State, Commercial, and Federal Forests



Southeast Region



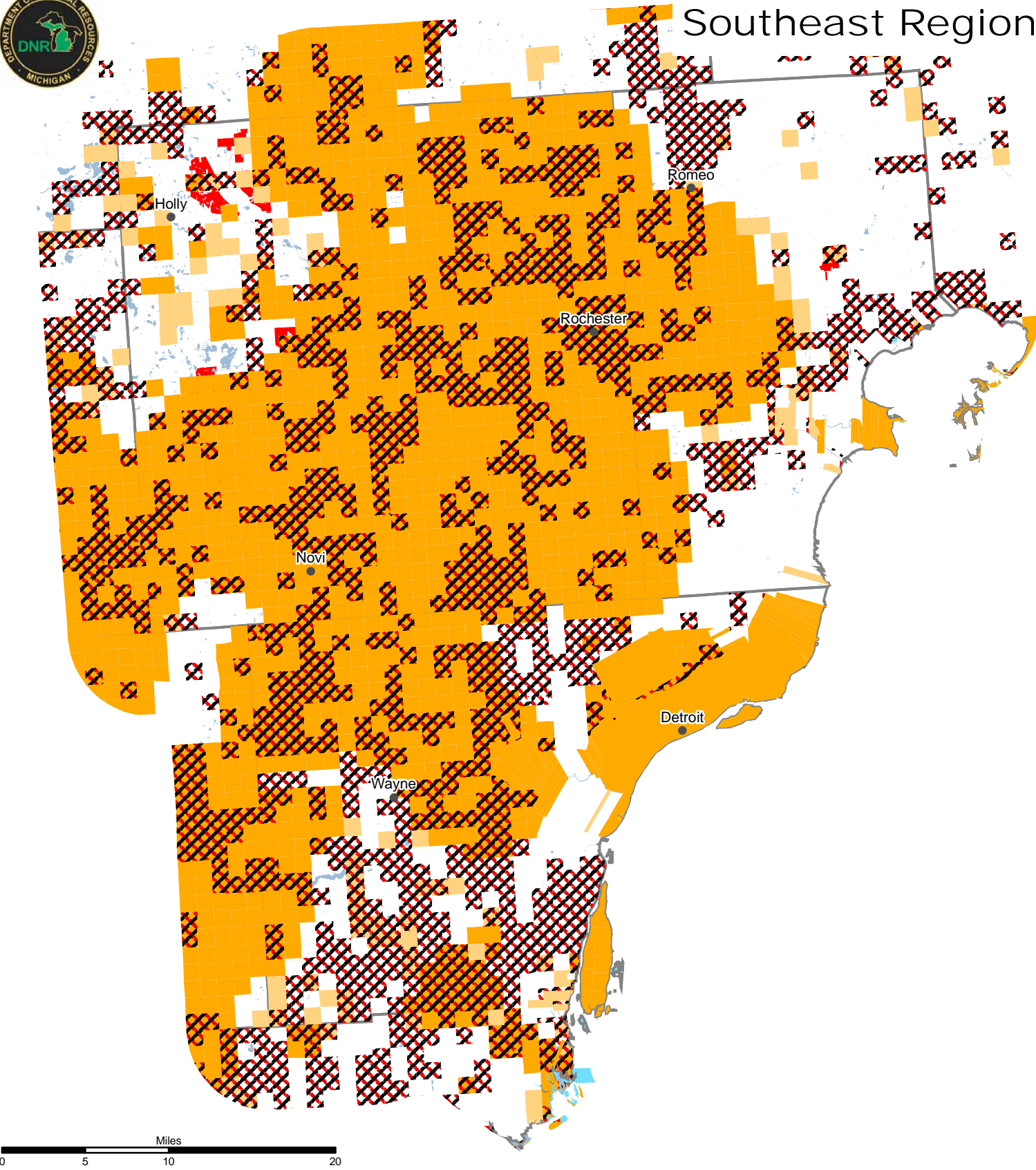
Legend

- Cities
- ▭ Counties
- ▭ Lakes and Rivers All
- ▭ State Lands
- ▭ State Forests
- ▭ State Parks
- ▭ WLD DIV Lands
- ▭ Conservation Easements
- ▭ Commercial Forests
- ▭ Federal Lands

DNR Natural and Cultural Features



Southeast Region



Legend

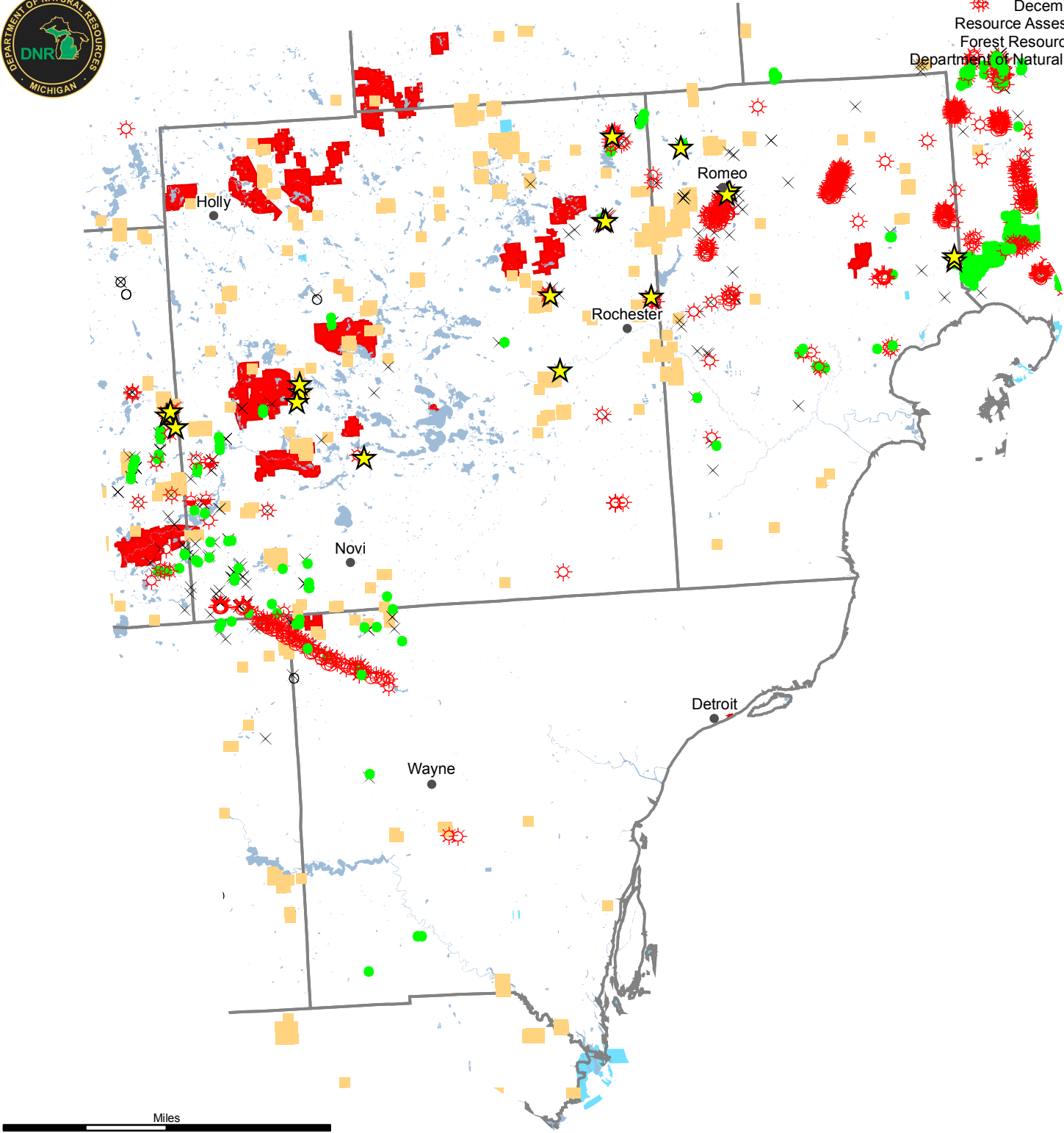
- | | | |
|--------------------|---------------|---|
| • Cities | State Lands | Threatened_Endangered_or_Rare_Species_Sites |
| □ Counties | State Forests | Rare_Natural_Community_Sites |
| □ Lakes and Rivers | State Parks | Archaeology Sites |
| □ WLD DIV Lands | | |

DNR Oil and Gas

Southeast Region



December 5, 2012
Resource Assessment Unit
Forest Resources Division
Department of Natural Resources



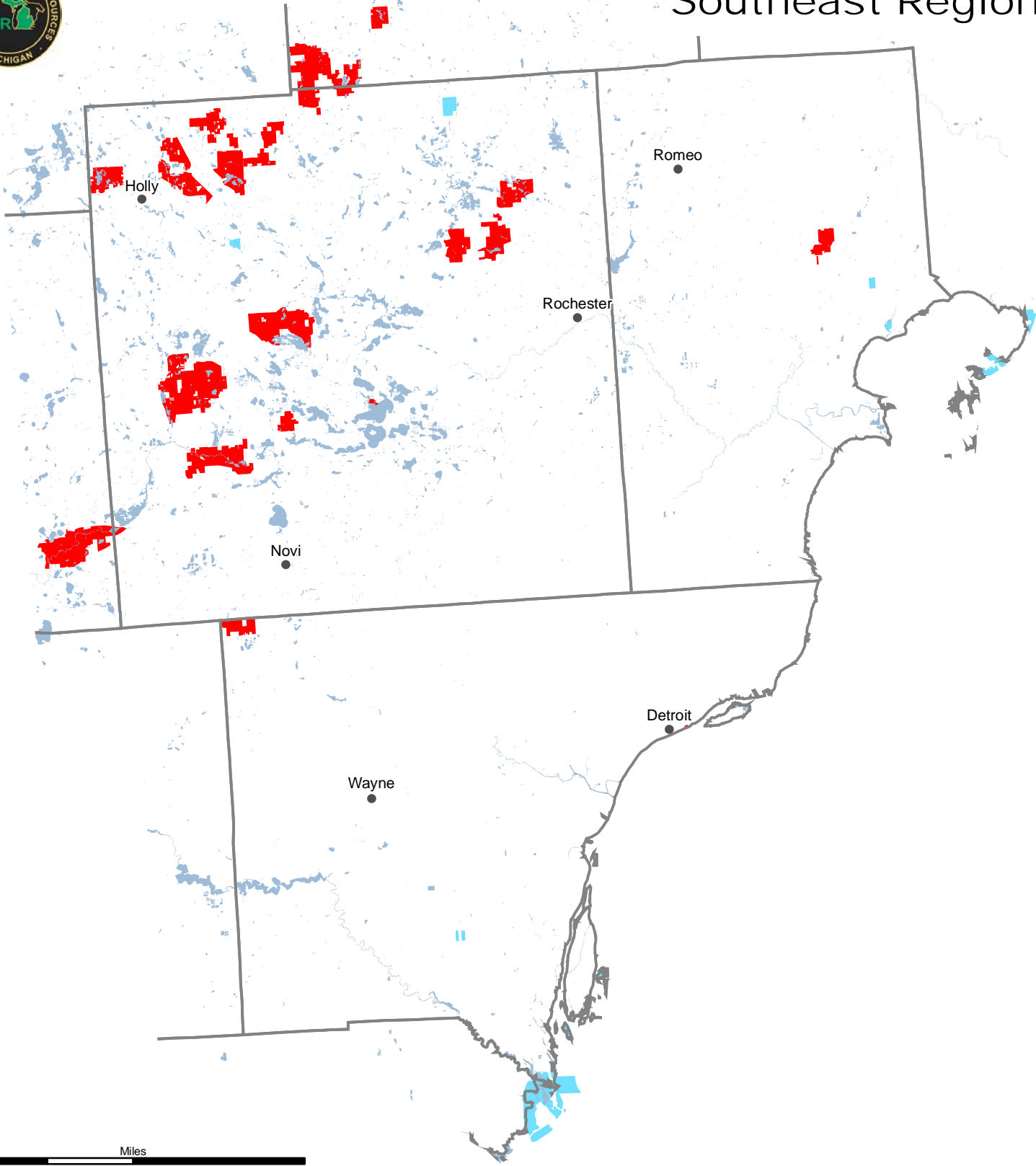
Legend

- | | | |
|--------------------|-------------------------------------|---|
| ● Cities | ● Oil | ★ Oil & Gas Well Hydrogen Sulfide Wells |
| ▭ Counties | ⊗ Natural Gas | × Oil & Gas Well Surface Locations |
| ▭ Lakes and Rivers | ⊗ Gas Condensate | ■ Sand & Gravel Pits |
| ▭ State Lands | ⊗ Gas Injection | |
| ▭ State Forests | ⊗ Gas Storage | |
| ▭ State Parks | ⊗ Gas Production and Brine Disposal | |
| ▭ WLD DIV Lands | ○ Permitted Well Location | |

DNR Timber Management 2008-2012



Southeast Region



Legend

- | | | | |
|--------------------|-----------------|----------------------|---------------------------|
| • Cities | State Lands | Timber Sales | Timber Management History |
| ▭ Counties | ▭ State Forests | ▭ Closed Timber Sale | ▭ Successful Completion |
| ▭ Lakes and Rivers | ▭ State Parks | ▭ Open Timber Sale | |
| | ▭ WLD DIV Lands | | |