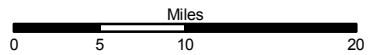
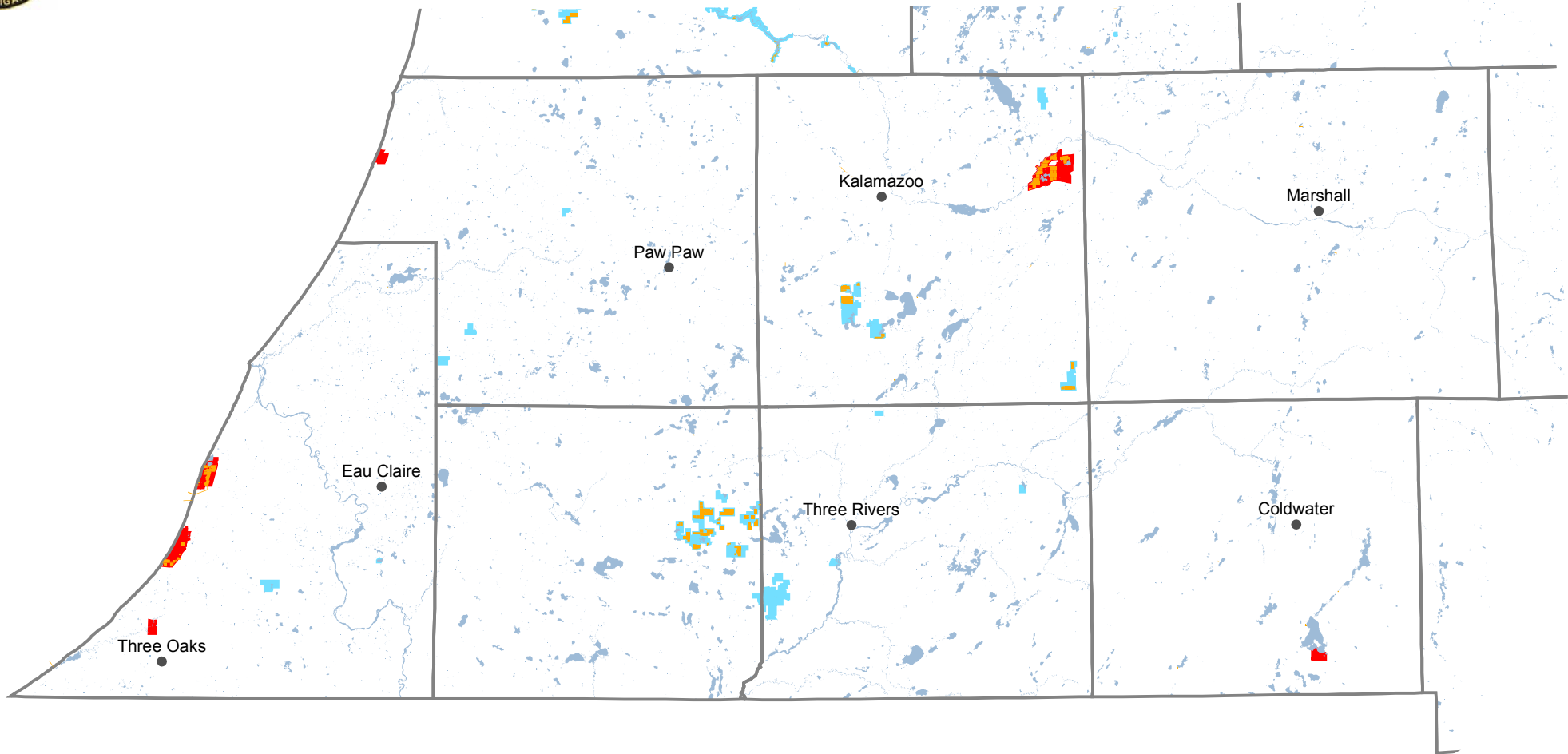


# DNR Easements

# Southwest Region

Resource Assessment Unit  
Forest Resources Division  
Department of Natural Resources



## Legend

- |                    |               |                   |
|--------------------|---------------|-------------------|
| • Cities           | State Lands   | Granted Easements |
| □ Counties         | State Forests |                   |
| □ Lakes and Rivers | State Parks   |                   |
|                    | WLD DIV Lands |                   |

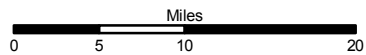
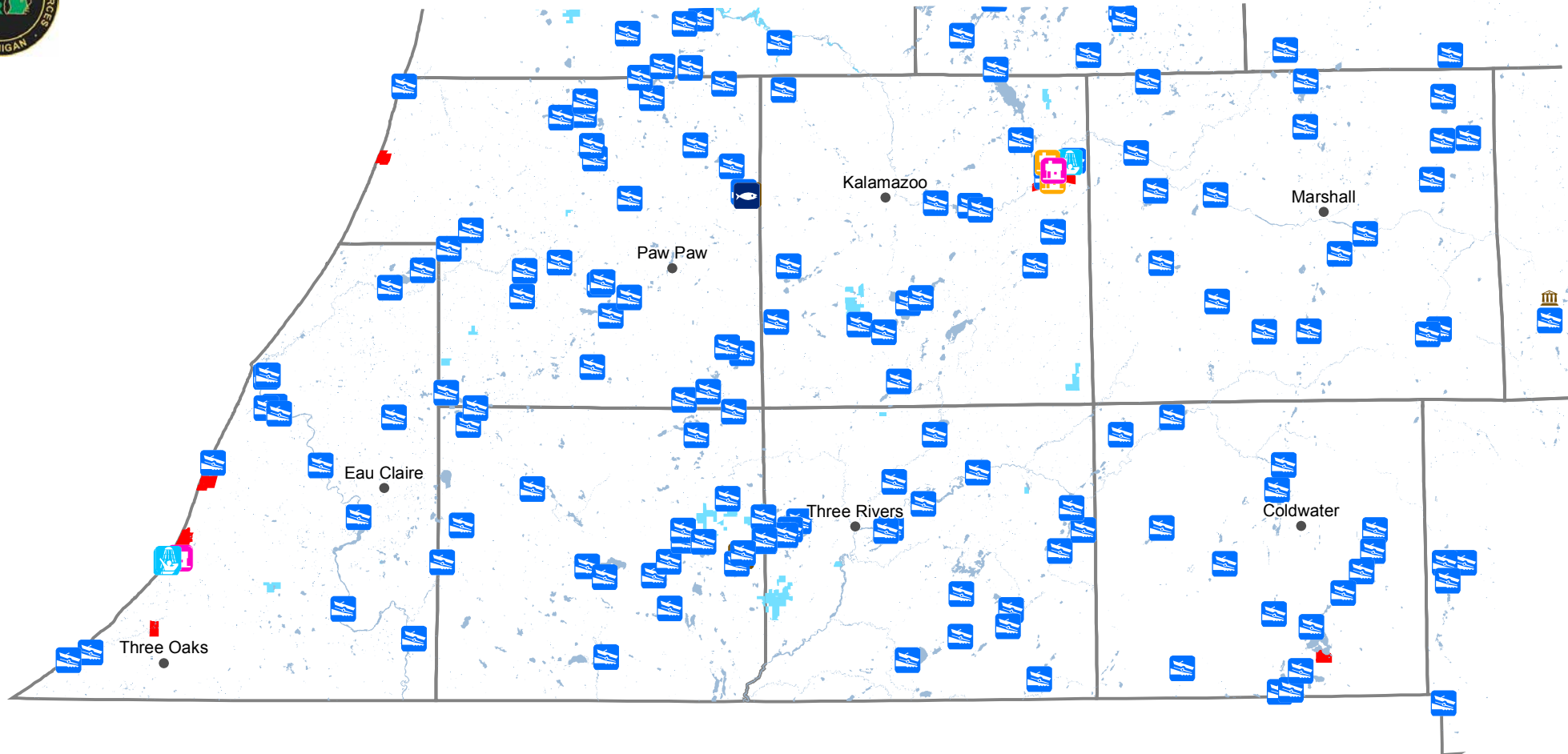


# DNR Facilities

## Southwest Region

Forest Resources Division  
Resource Assessment Unit

Department of Natural Resources



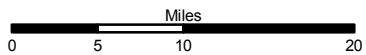
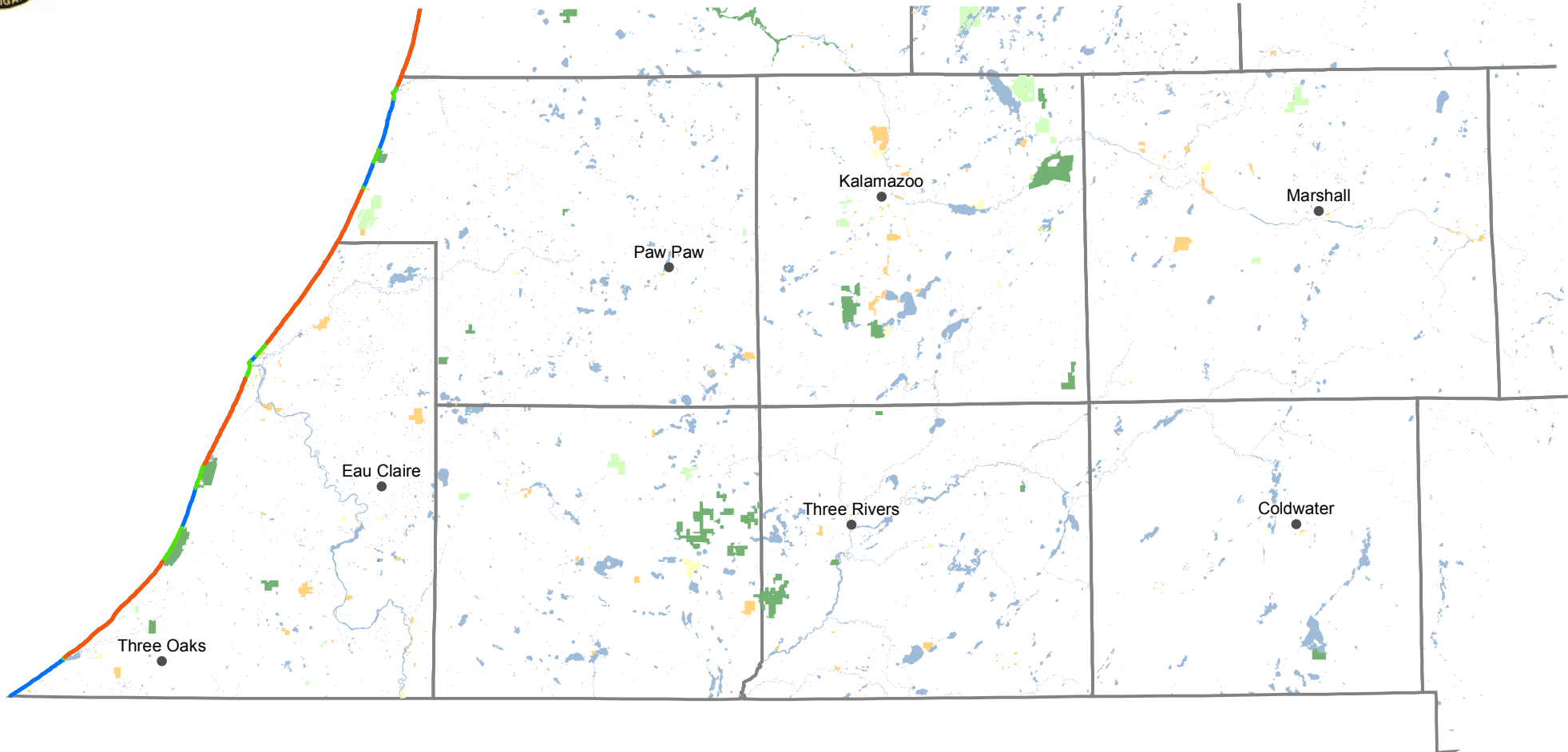
### Legend

• Cities	<b>State Lands</b>	<b>DNR Facilities</b>	Historic Structure	Rustic Cabin
Lakes and Rivers	State Forests	Barn/Riding Stable	Lock	Rustic Campground
Counties	State Parks	Beach House/Bath House	Lodge	Shooting Range
	WLD DIV Lands	Boating Access Site	Mini Cabin	Visitor Center/Nature Center
		Harbor	Museum	
		Hatchery	Nursery	

# Great Lakes Access

# Southwest Region

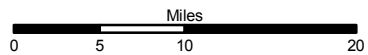
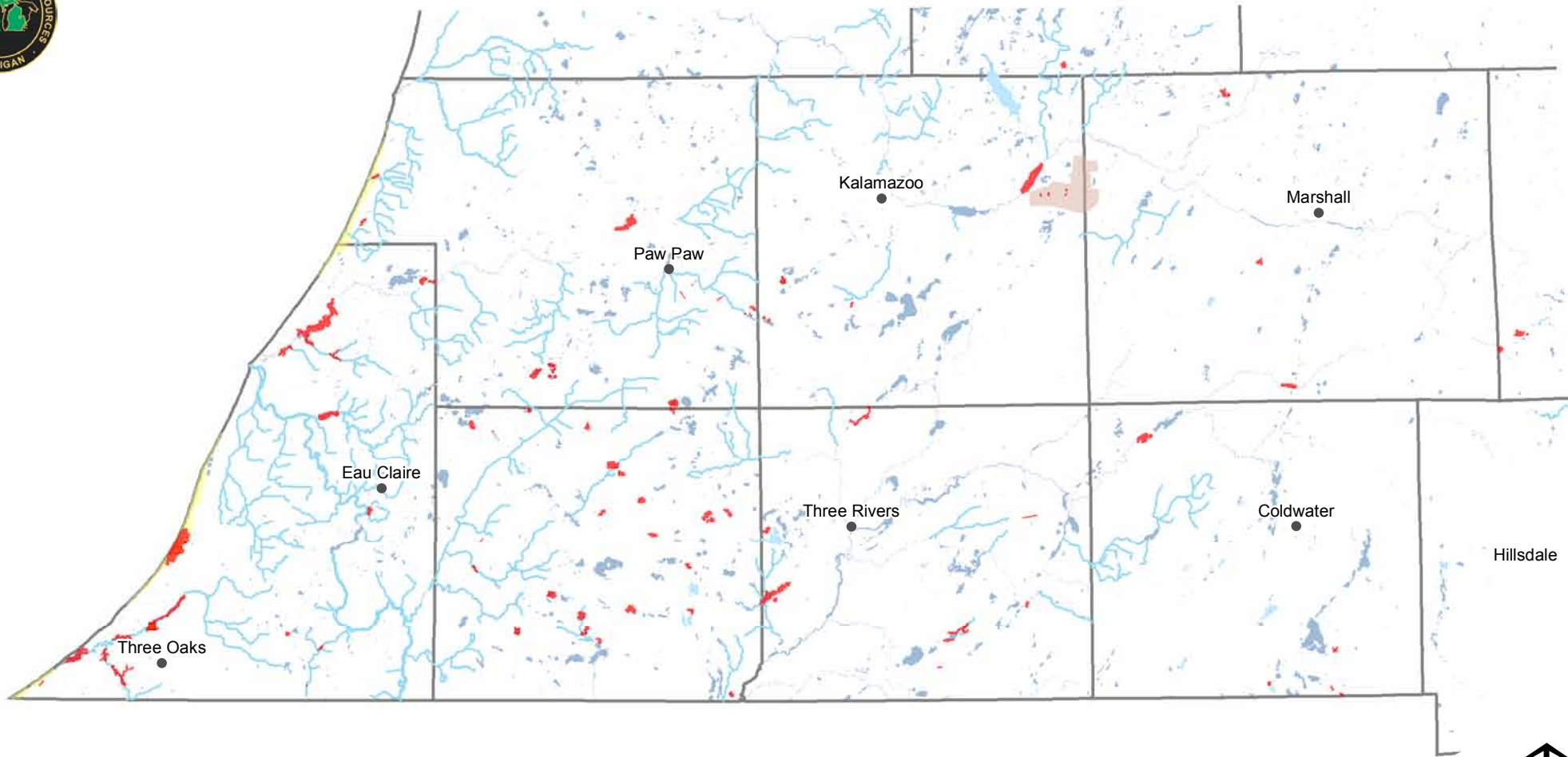
Resource Assessment Unit  
Forest Resources Division  
Department of Natural Resources



## Legend

- |                    |                                |                                   |   |
|--------------------|--------------------------------|-----------------------------------|---|
| ● Cities           | ■ State Land                   | ■ County Great Lakes Water Access | — No Public Water Access  |
| □ Counties         | ■ Federal Land                 | ■ Local                           | — Public Water Access   |
| ■ Lakes and Rivers | ■ The Nature Conservancy Lands | ■ NGO                             | — Continuous Shoreline greater than 5 miles without public water access |
| ■ Other            |                                |                                   |   |





## Legend

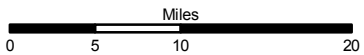
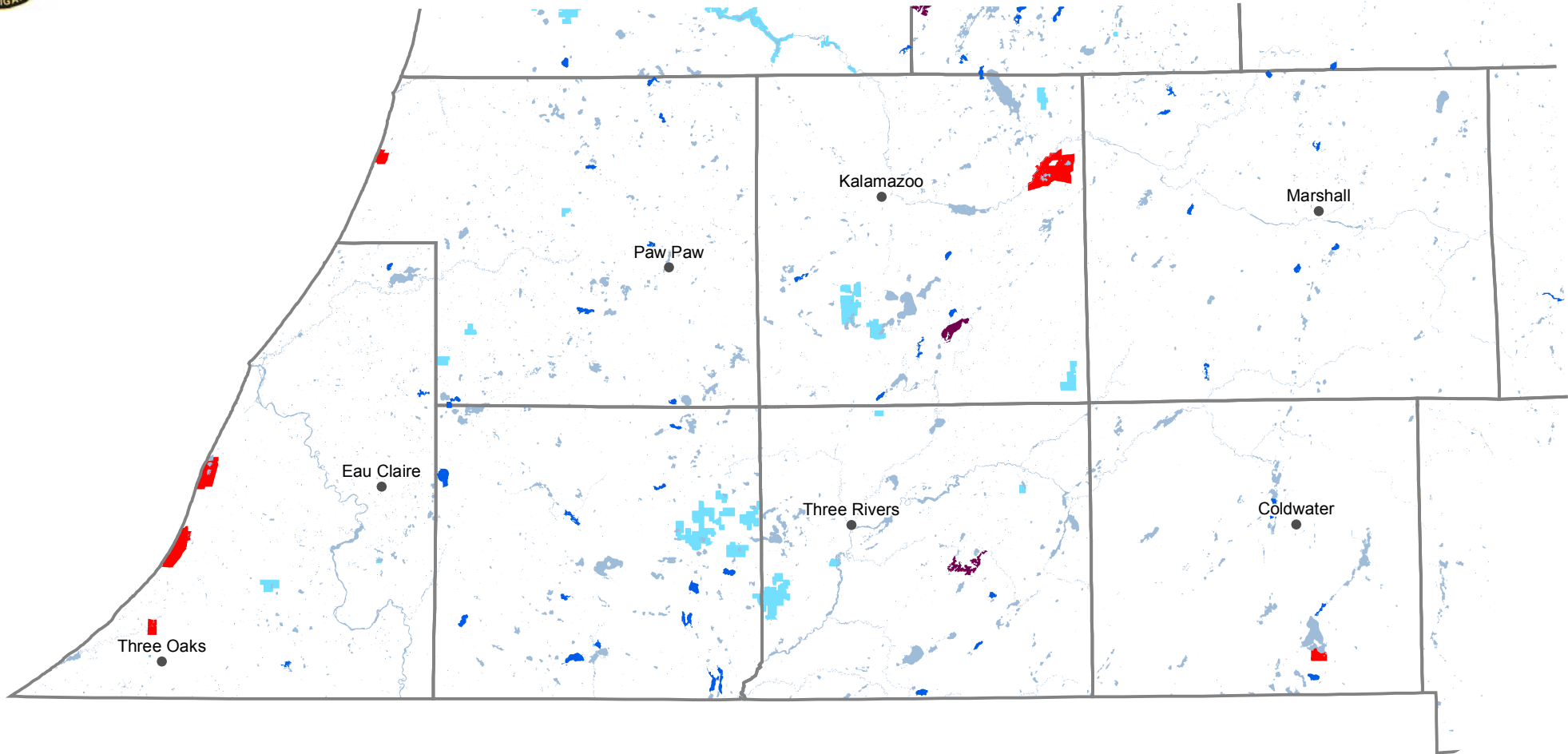
- |  |   |                                   |
|--|---|-----------------------------------|
| • Cities                                 | Natural Rivers Vegetative Buffer          | Deer Wintering Areas              |
| Counties                                 | Critical Dunes                            | Cold Water Lakes                  |
| Lakes and Rivers                         | Coastal Environmental Areas               | Cold Water Streams                |
| Ecological Reference Areas               | Campgrounds                               | IFMAP Special Conservation Areas  |
| Natural Areas Legally Dedicated          | Fishing Access Sites                      | Contiguous Resource Areas         |
| Dedicated Management Areas               | Great Lakes Islands                       | Visual Management Areas           |
| Kirtland Warbler Habitat                 | Wildlife Research Areas                   | Wild & Scenic Rivers (USFS Lands) |
| Critical Coastal Habitat (Piping Plover) | Research, Development, and Military Lands | Mineral Resource Polygon          |
| Natural Rivers Zoning District           | Wildlife Management Areas                 | Mineral Resource Points           |



# DNR Lake Access

## Southwest Region

Resource Assessment Unit  
Forest Resources Division  
Department of Natural Resources



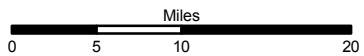
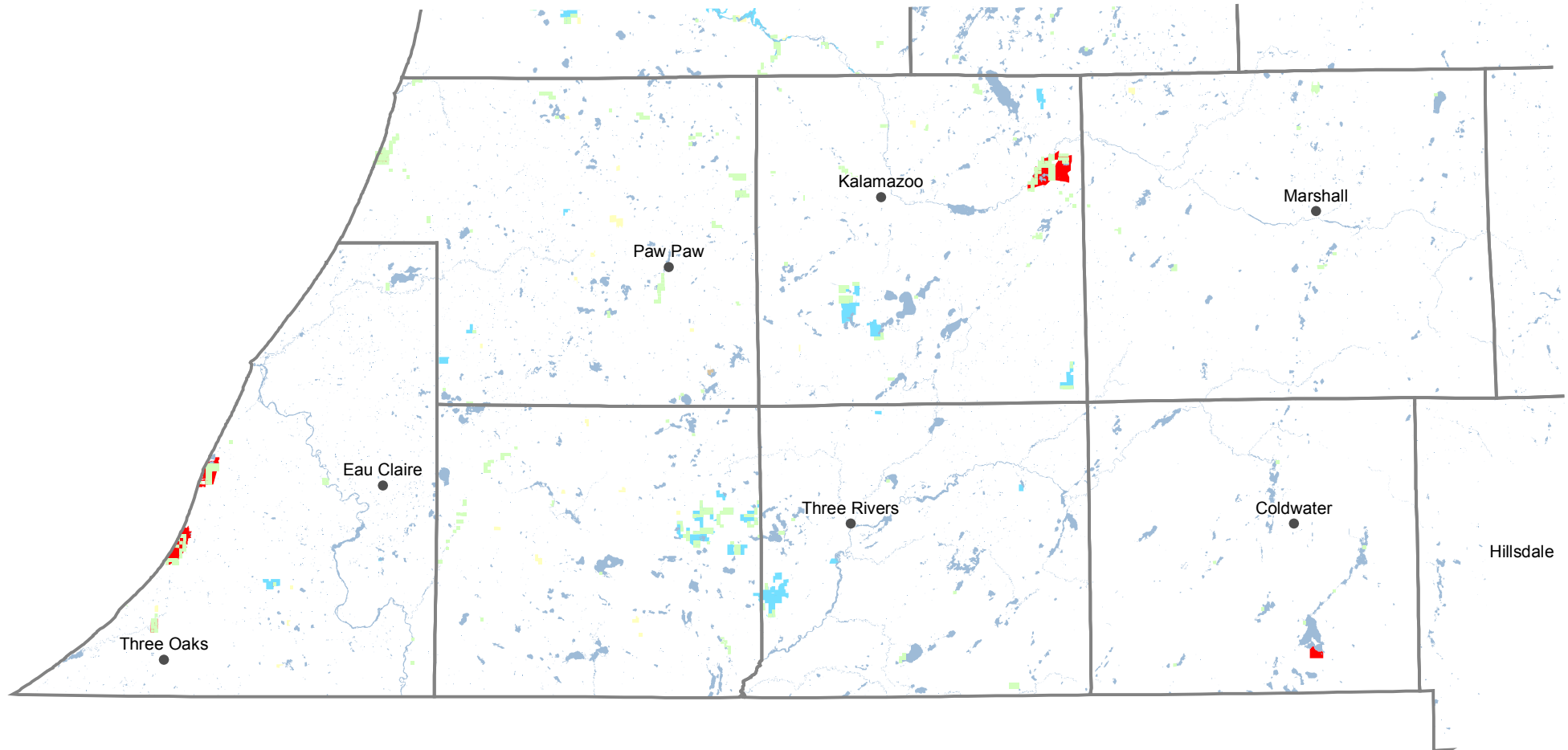
### Legend

- |                    |                 |   |
|--------------------|-----------------|---|
| • Cities           | State Lands     | ■ Lakes Greater than 500 Acres wo Access    |
| □ Counties         | ■ State Forests | ■ Lakes Between 100 and 500 Acres wo Access |
| ■ Lakes and Rivers | ■ State Parks   |   |
| ■ WLD DIV Lands    |                 |   |



# State, Commercial, and Federal Forests

# Southwest Region

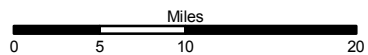
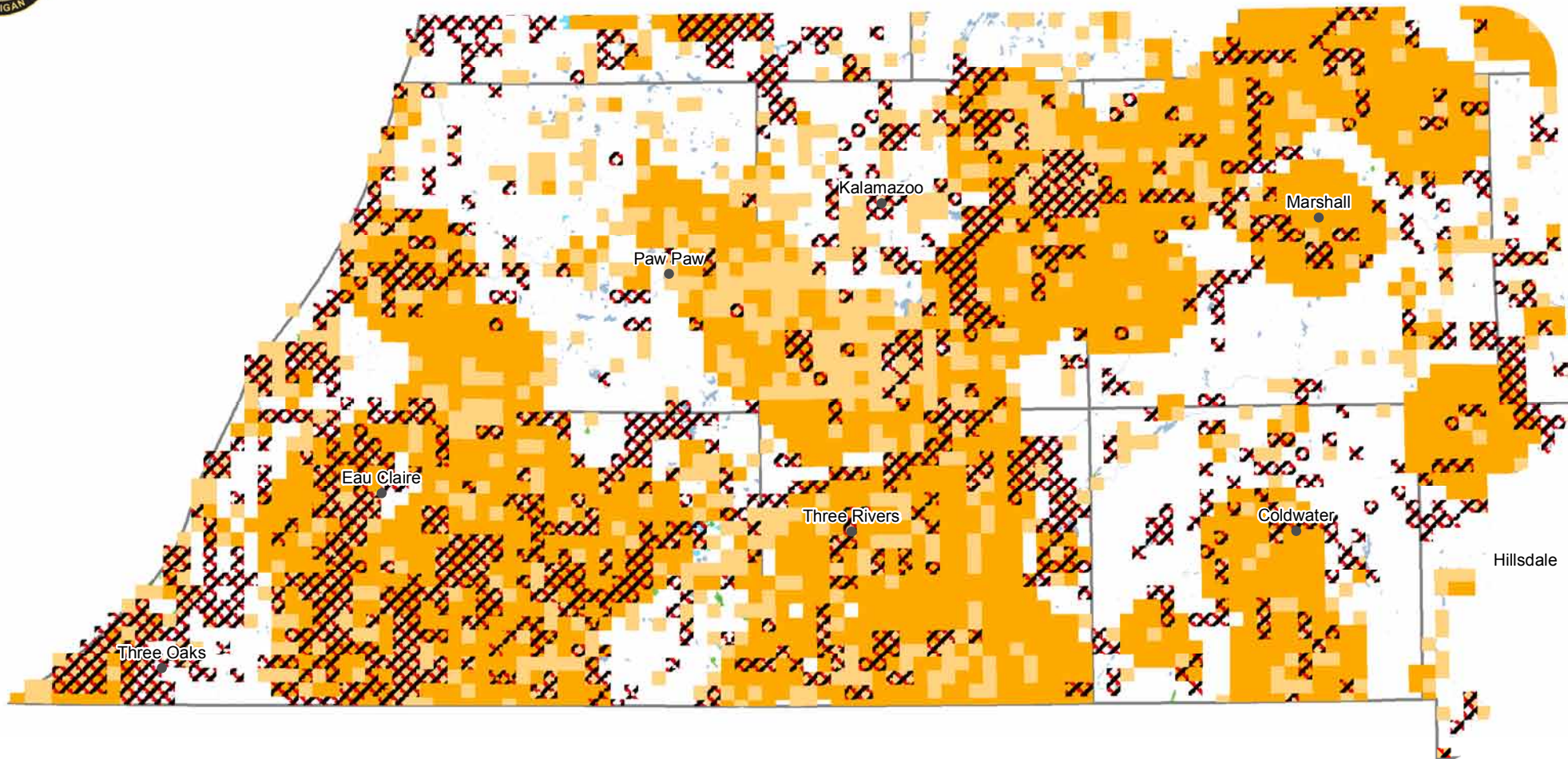


## Legend

- Cities
- Counties
- Lakes and Rivers
- State Lands
  - State Forests
  - State Parks
- Conservation Easements
- Commercial Forests
- Federal Lands
- WLD DIV Lands







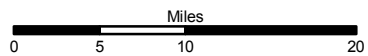
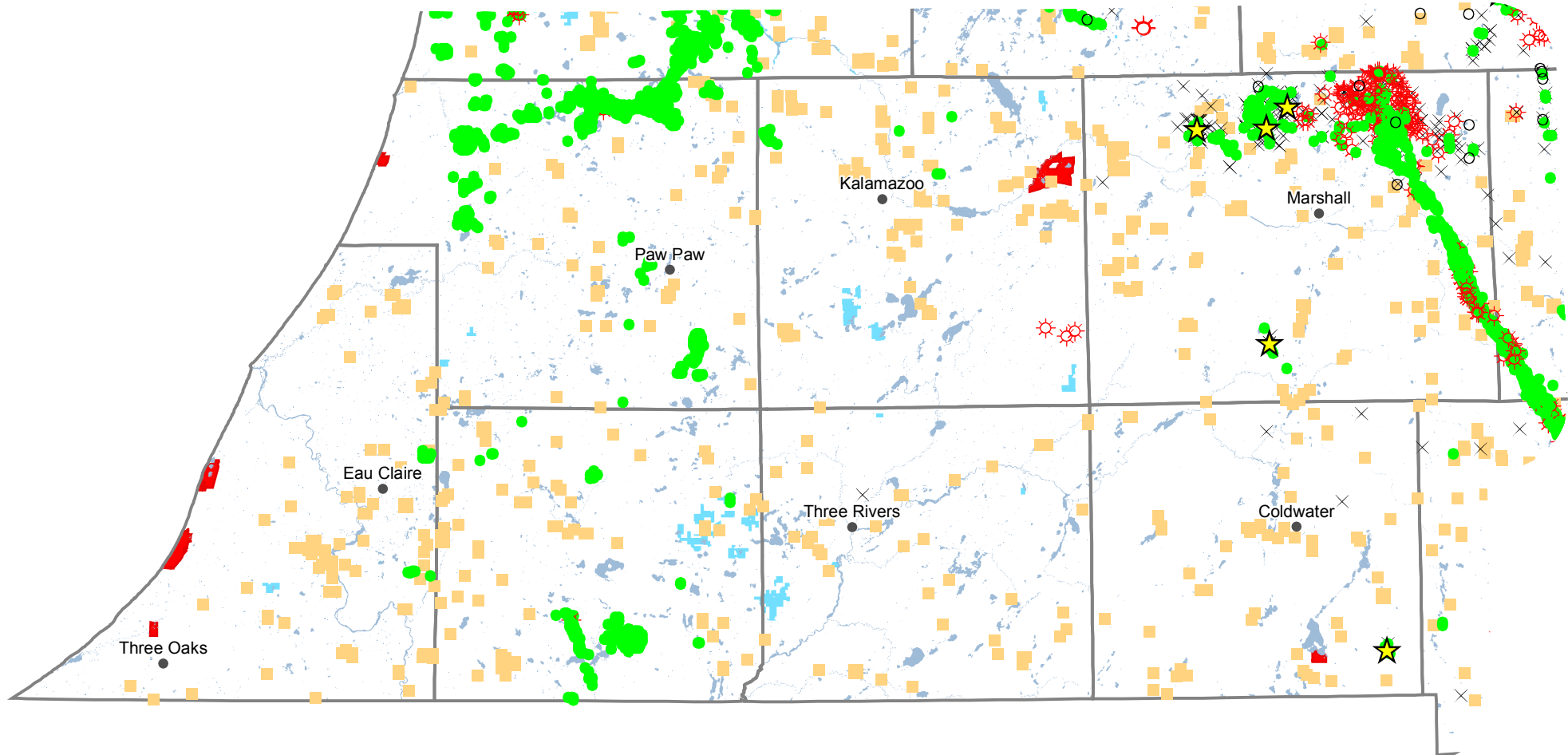
## Legend

- |                  |               |   |
|------------------|---------------|---|
| • Cities         | State Lands   | Archaeology Sites                           |
| Community        | State Forests | Threatened_Endangered_or_Rare_Species_Sites |
| Counties         | State Parks   | Rare_Natural_Community_Sites                |
| Lakes and Rivers | WLD DIV Lands |   |

# DNR Oil and Gas

# Southwest Region

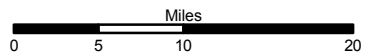
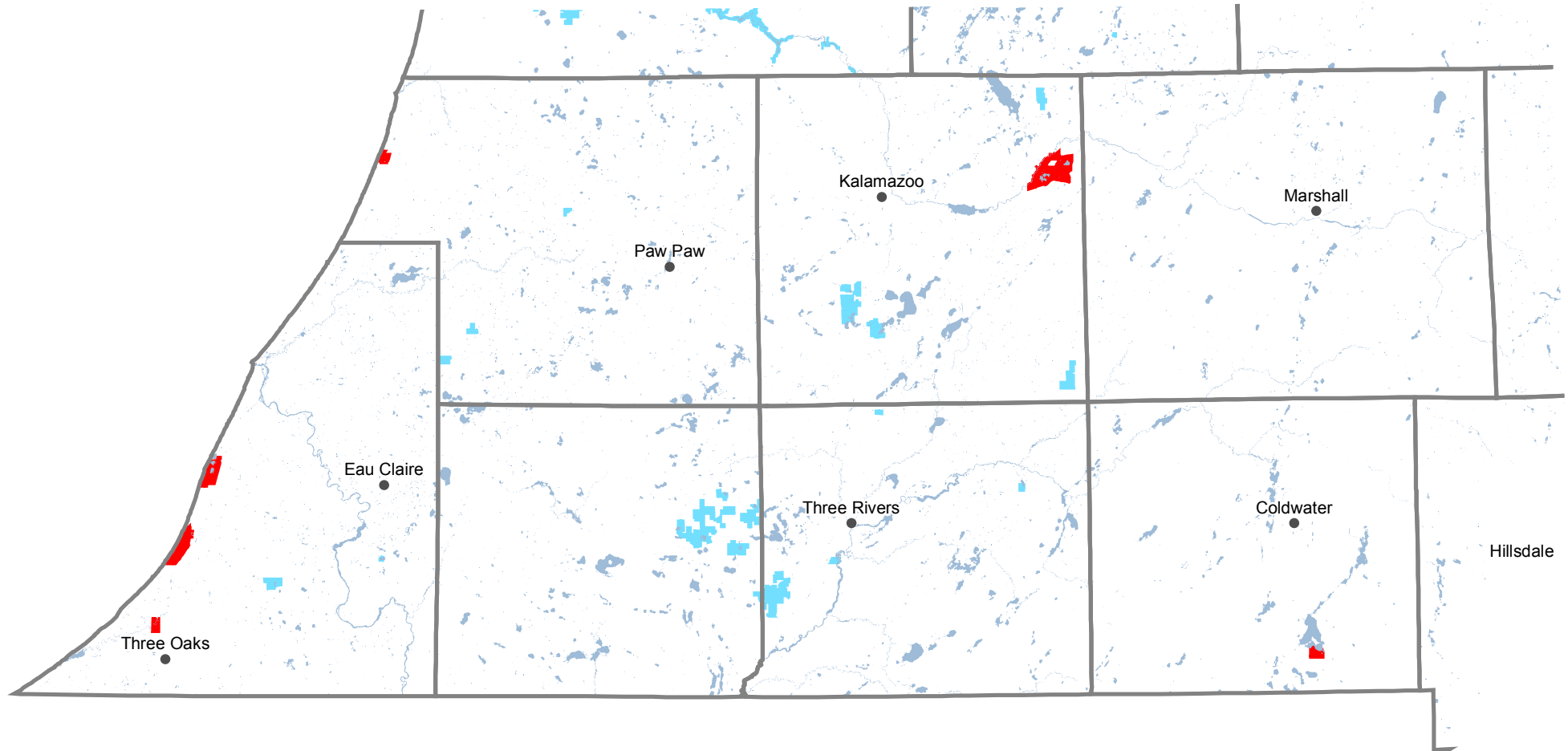
Resource Assessment Unit  
Forest Resources Division  
Department of Natural Resources



## Legend

- |                    |                 |                  |                                     |   |
|--------------------|-----------------|------------------|-------------------------------------|---|
| • Cities           | State Lands     | ● Oil            | ☼ Gas Storage                       | ★ Oil & Gas Well Hydrogen Sulfide Wells |
| ▭ Counties         | ■ State Forests | ☼ Natural Gas    | ☼ Gas Production and Brine Disposal | × Oil & Gas Well Surface Locations      |
| ■ Lakes and Rivers | ■ State Parks   | ☼ Gas Condensate | ○ Permitted Well Location           | ■ Sand & Gravel Pits                    |
| ■ WLD DIV Lands    |                 | ☼ Gas Injection  |                                     |   |





## Legend

- |                    |                 |                      |                           |
|--------------------|-----------------|----------------------|---------------------------|
| • Cities           | State Lands     | Timber Sales         | Timber Management History |
| ▭ Counties         | ■ State Forests | ■ Closed Timber Sale | ▭ Successful Completion   |
| ■ Lakes and Rivers | ■ State Parks   | ■ Open Timber Sale   |                           |
|                    | ■ WLD DIV Lands |                      |                           |

