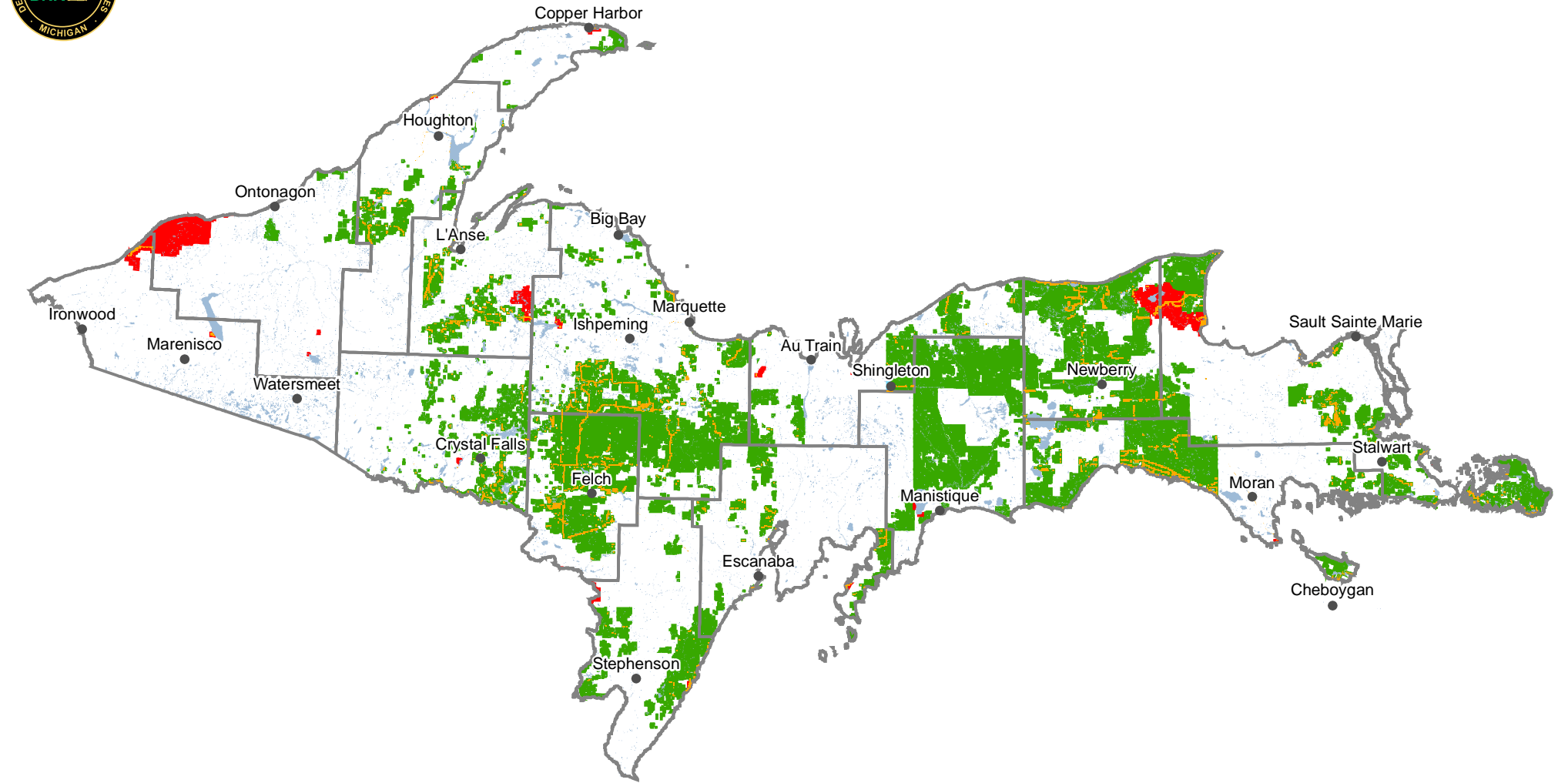


DNR Easements

Upper Peninsula Region

Resource Assessment Unit
Forest Resources Division
Department of Natural Resources



Legend

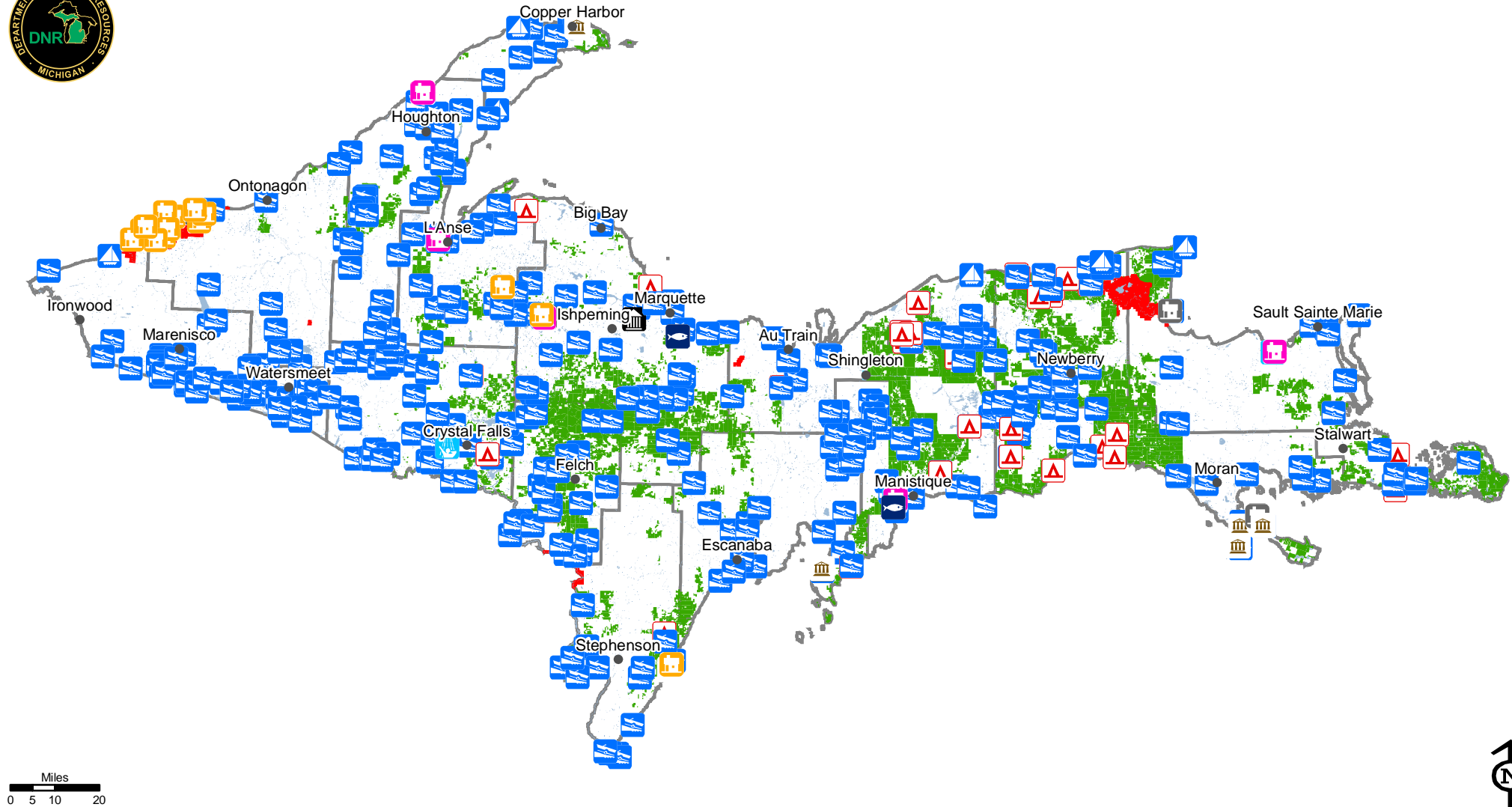
- | | | |
|------------------|---------------|-------------------|
| • Cities | State Lands | Granted Easements |
| Counties | State Forests | |
| Lakes and Rivers | State Parks | |
| | WLD DIV Lands | |

DNR Facilities

Upper Peninsula Region

Forest Resources Division
Resource Assessment Unit

Department of Natural Resources

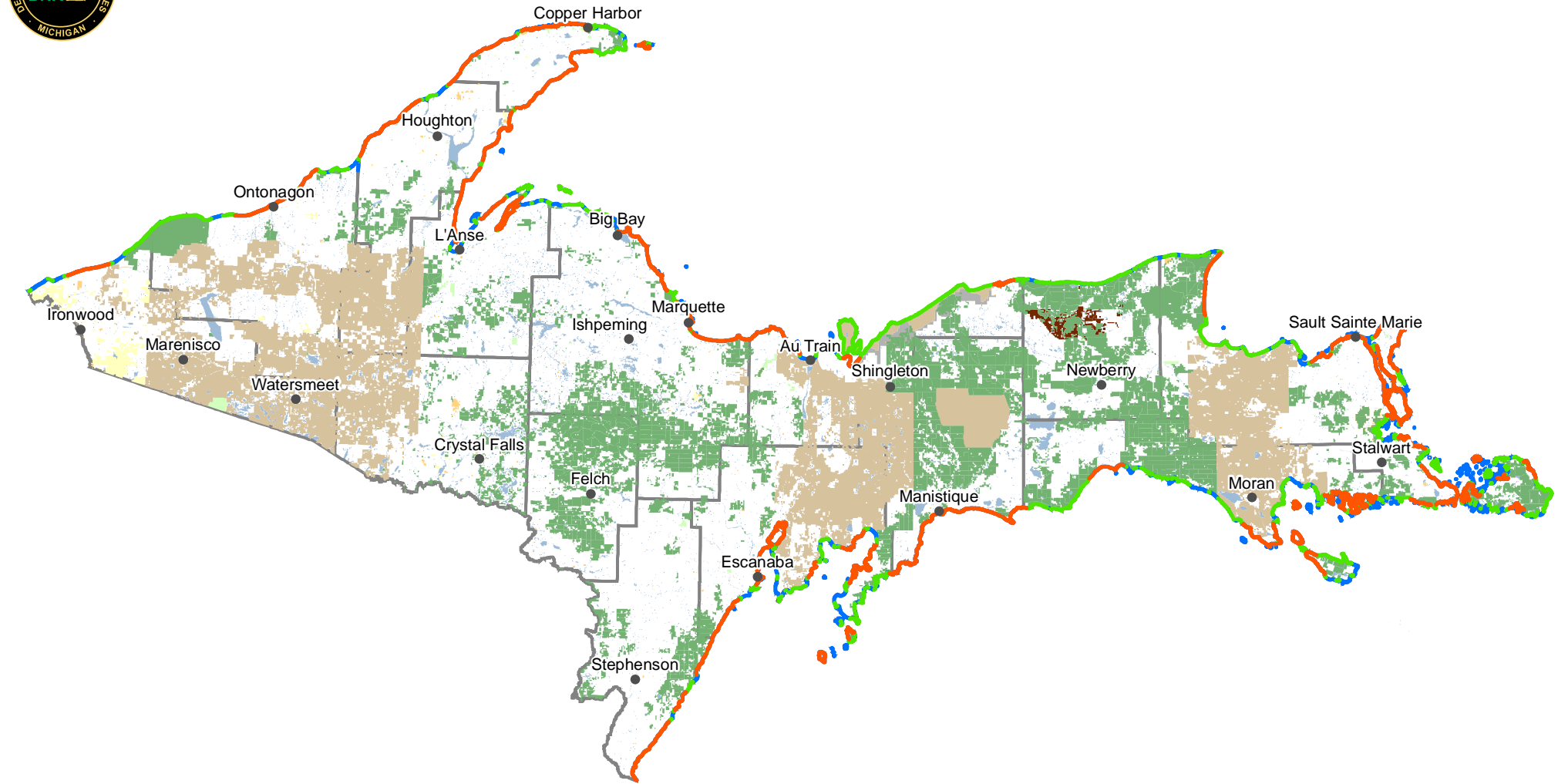


Legend

• Cities	State Lands	DNR Facilities	Historic Structure	Rustic Cabin
Lakes and Rivers	State Forests	Barn/Riding Stable	Lock	Rustic Campground
Counties	State Parks	Beach House/Bath House	Lodge	Shooting Range
	WLD DIV Lands	Boating Access Site	Mini Cabin	Visitor Center/Nature Center
		Harbor	Museum	
		Hatchery	Nursery	

reat Lakes Water Access Upper Peninsula Region

Resource Assessment Unit
Forest Resources Division
Department of Natural Resources

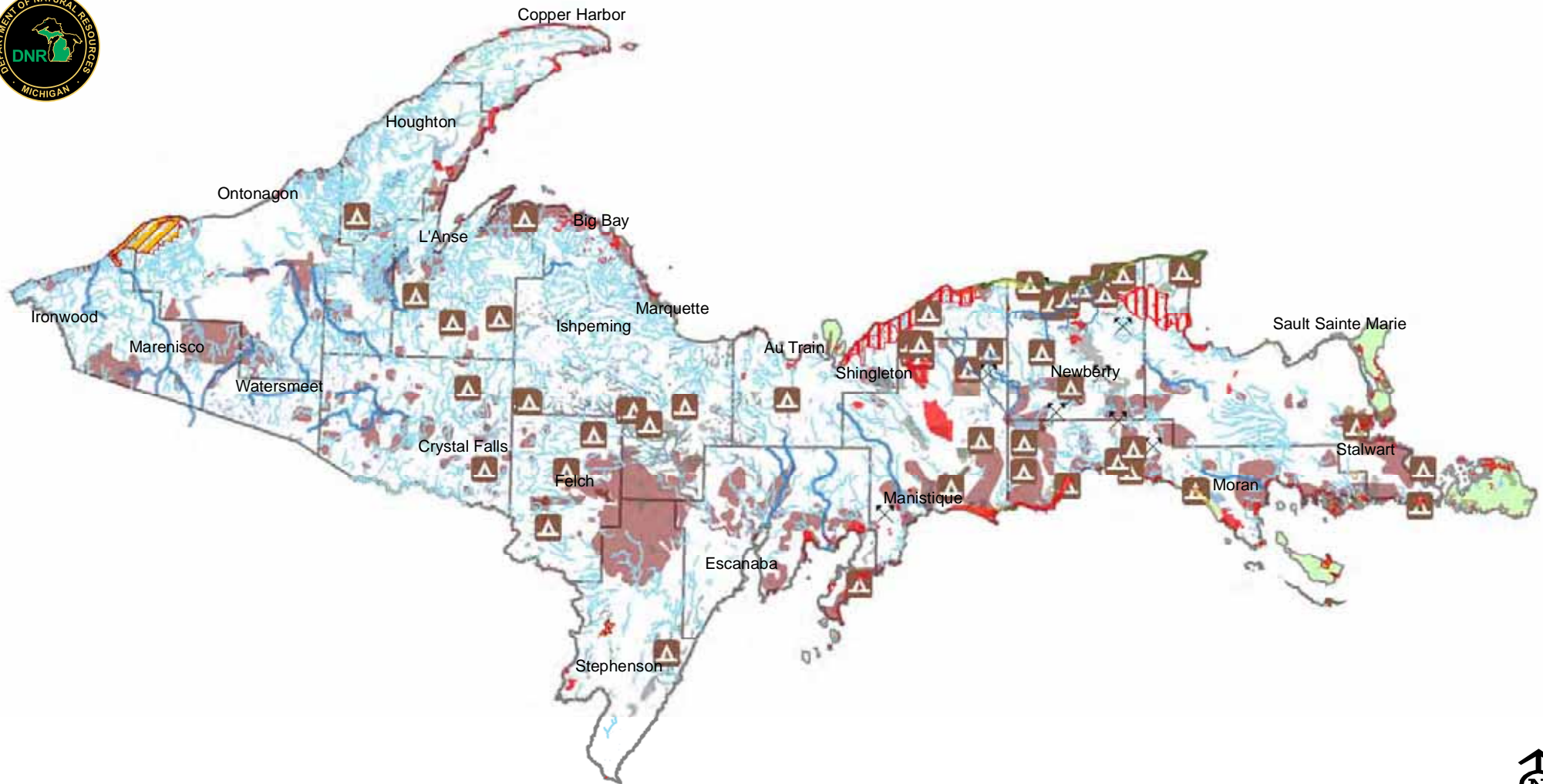


Miles
0 5 10 20

Legend

- | | | | |
|--------------------|------------------------------|--------|---|
| ● Cities | State Land | County | reat Lakes Water Access |
| □ Counties | Federal Land | Local | No Public Water Access |
| ■ Lakes and Rivers | The Nature Conservancy Lands | N O | Public Water Access |
| | | Other | Continuous Shoreline greater then 5 miles without public water access |

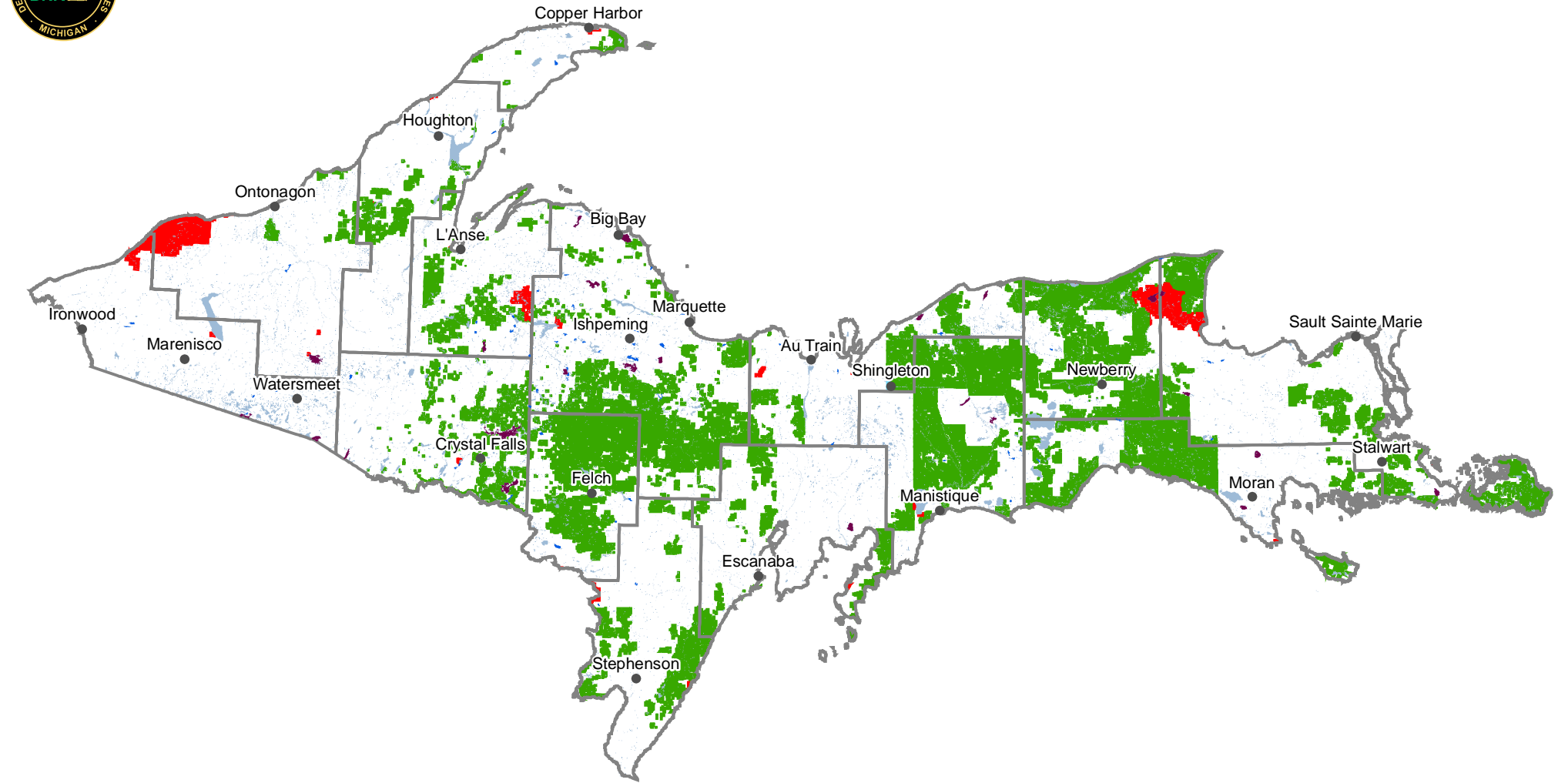




Legend

- Cities
- Counties
- Lakes and Rivers
- Ecological Reference Areas
- ▨ Natural Areas Legally Dedicated
- Dedicated Management Areas
- Inland Warbler Habitat
- Critical Coastal Habitat Piping Plover
- Natural Rivers Planning District
- Natural Rivers Vegetative Buffer
- Critical Dunes
- Coastal Environmental Areas
- ▲ Campgrounds
- Fishing Access Sites
- Great Lakes Islands
- Wildlife Research Areas
- Research Development and Military Lands
- Wildlife Management Areas
- Deer Wintering Areas
- Cold Water Lakes
- Cold Water Streams
- IFMAP Special Conservation Areas
- Contiguous Resource Areas
- Visual Management Areas
- Wild Scenic Rivers USFS Lands
- Mineral Resource Polygon
- ✕ Mineral Resource Points



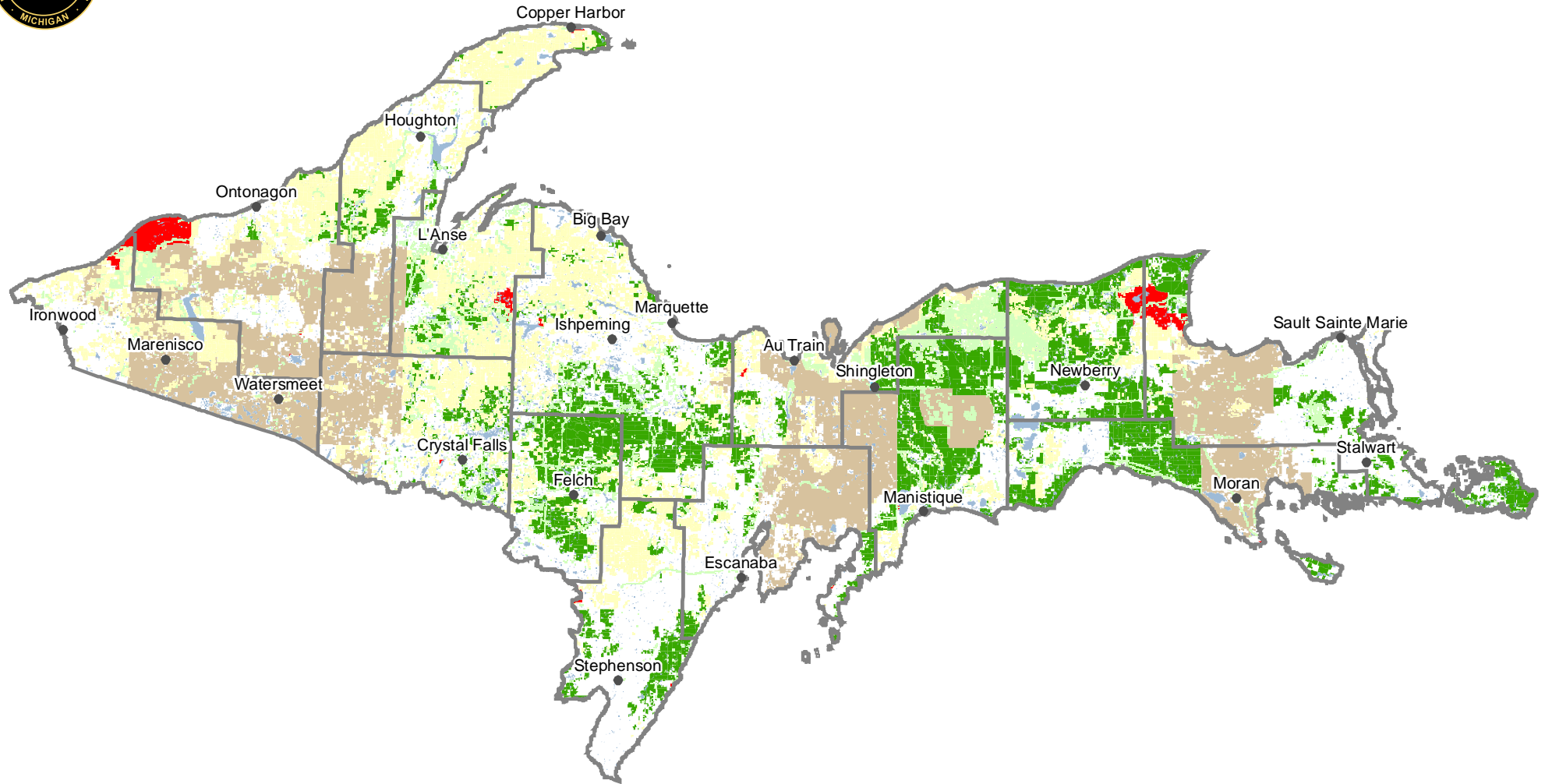


Miles
0 5 10 20

Legend

- | | | |
|--------------------|-----------------|---|
| • Cities | State Lands | ■ Lakes greater than 500 Acres wo Access |
| □ Counties | ■ State Forests | ■ Lakes Between 100 and 500 Acres wo Access |
| ■ Lakes and Rivers | ■ State Parks | |
| | ■ WLD DIV Lands | |



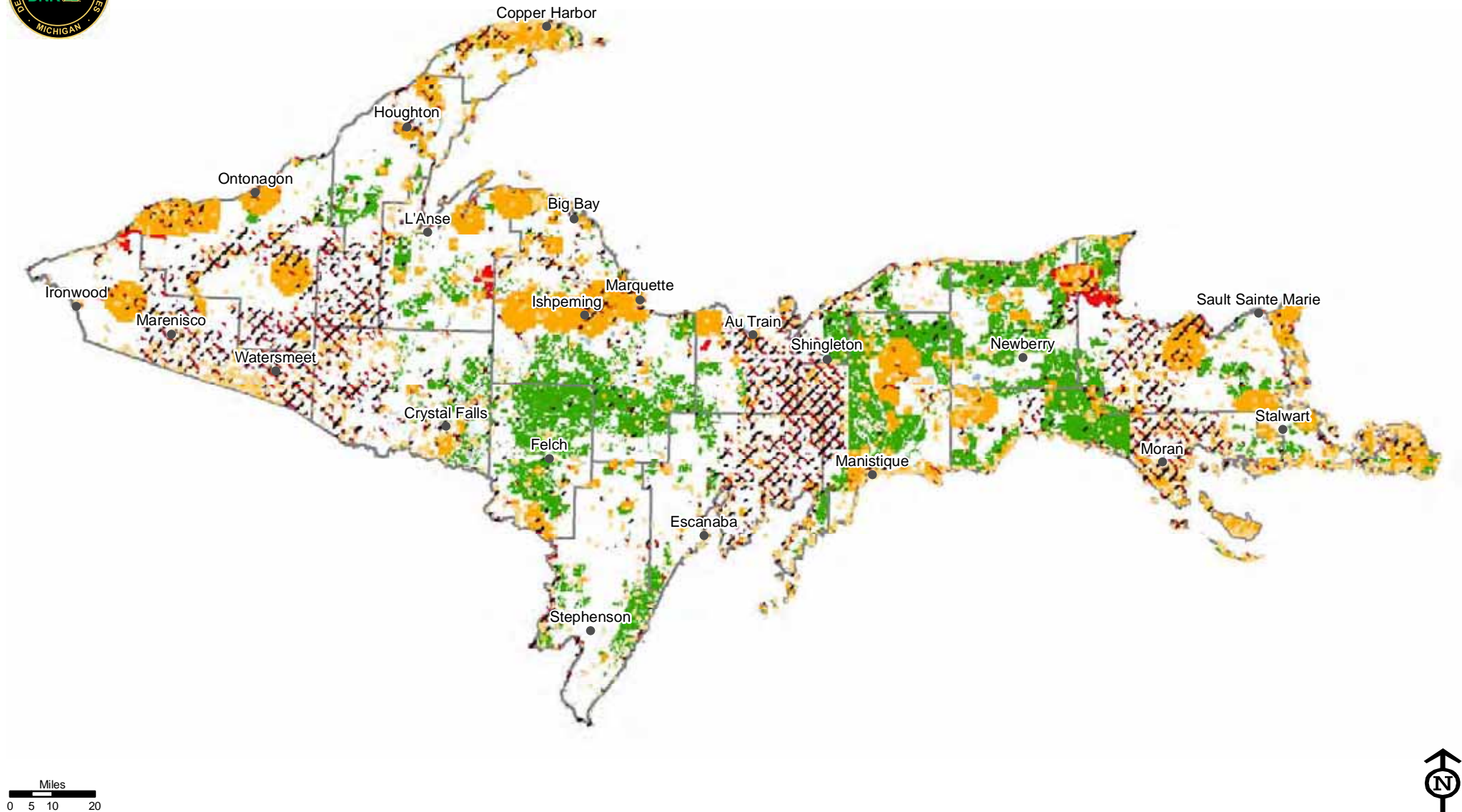


Miles
0 5 10 20

Legend

- Cities
- Counties
- Lakes and Rivers
- State Lands
 - State Forests
 - State Parks
 - WLD DIV Lands
- Conservation Easements
- Commercial Forests
- Federal Lands



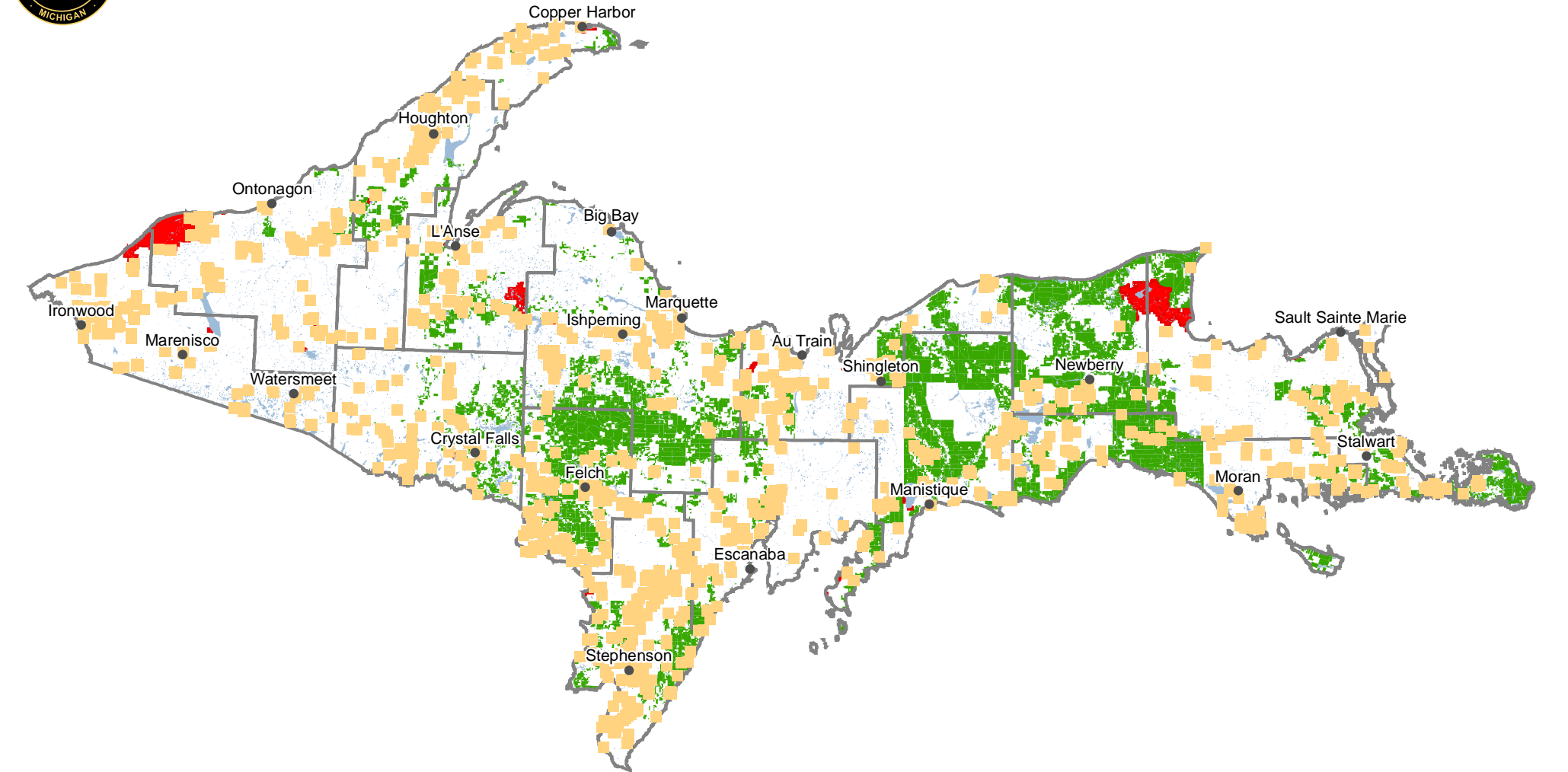


Legend

- Cities
- Counties
- Lakes and Rivers
- State Lands
 - State Forests
 - State Parks
 - WLD DIV Lands
- ▨ Archaeology Sites
- Threatened Endangered or Rare Species Sites
- Rare Natural Community Sites

DNR Oil and Gas Upper Peninsula Region

Resource Assessment Unit
Forest Resources Division
Department of Natural Resources

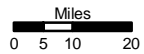
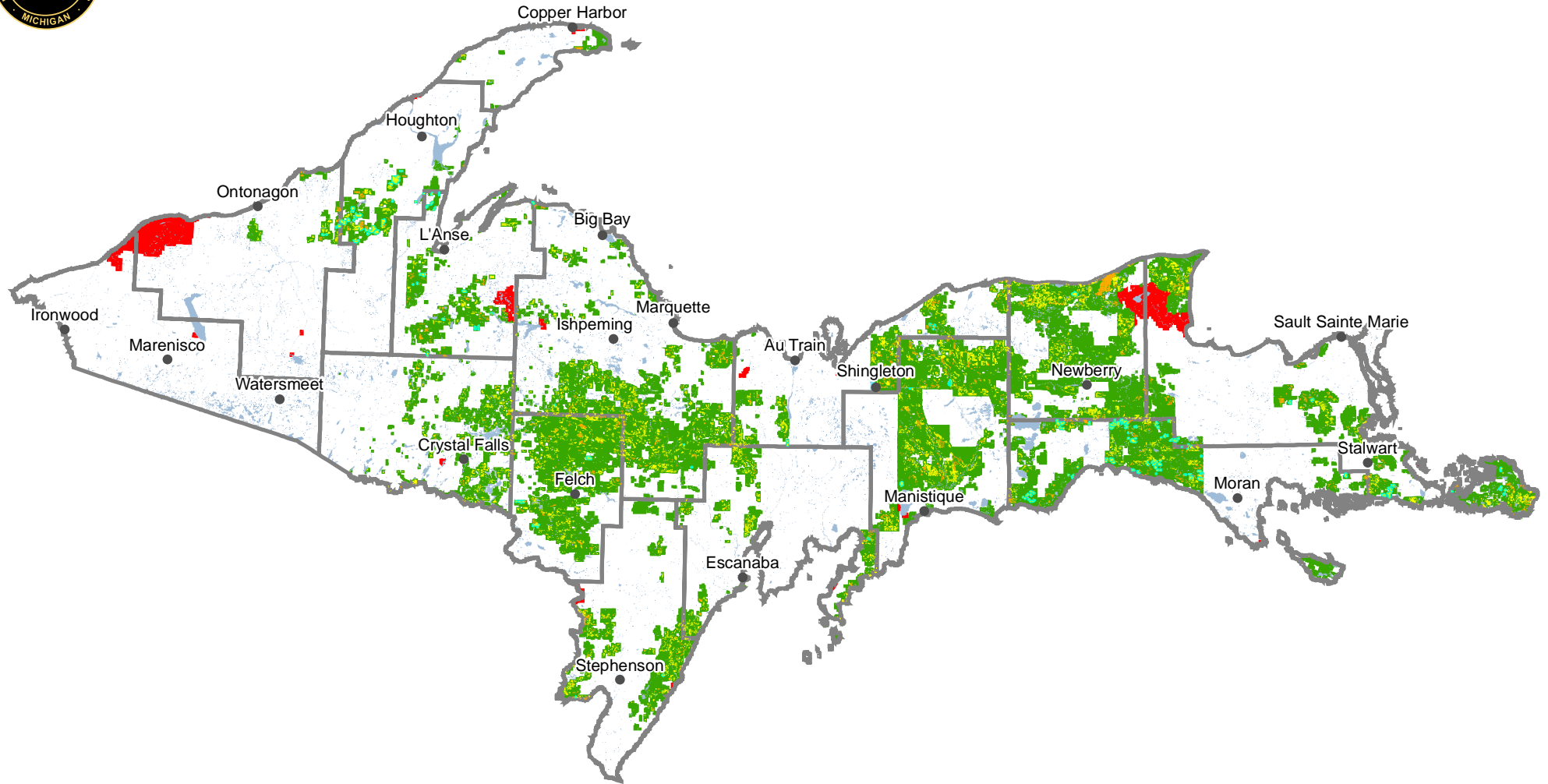


Miles
0 5 10 20

Legend

- | | | | |
|--------------------|--------------------------|---|--------------------------------------|
| • Cities | State Lands | ● Oil | ★ Oil as Well Hydrogen Sulfide Wells |
| □ Counties | ■ State Forests | ☼ Natural Gas Storage | × Oil as Well Surface Locations |
| ■ Lakes and Rivers | ■ State Parks | ☼ Natural Gas Production and Brine Disposal | ■ Sand and Gravel Pits |
| ■ WLD DIV Lands | ☼ Natural Gas Condensate | ○ Permitted Well Location | |
| | ☼ Natural Gas Injection | | |





Legend

- | | | | |
|--------------------|-----------------|----------------------|---------------------------|
| • Cities | State Lands | Timber Sales | Timber Management History |
| ▭ Counties | ■ State Forests | ■ Closed Timber Sale | ▭ Successful Completion |
| ▭ Lakes and Rivers | ■ State Parks | ■ Open Timber Sale | |
| | ■ WLD DIV Lands | | |

