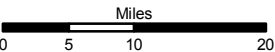
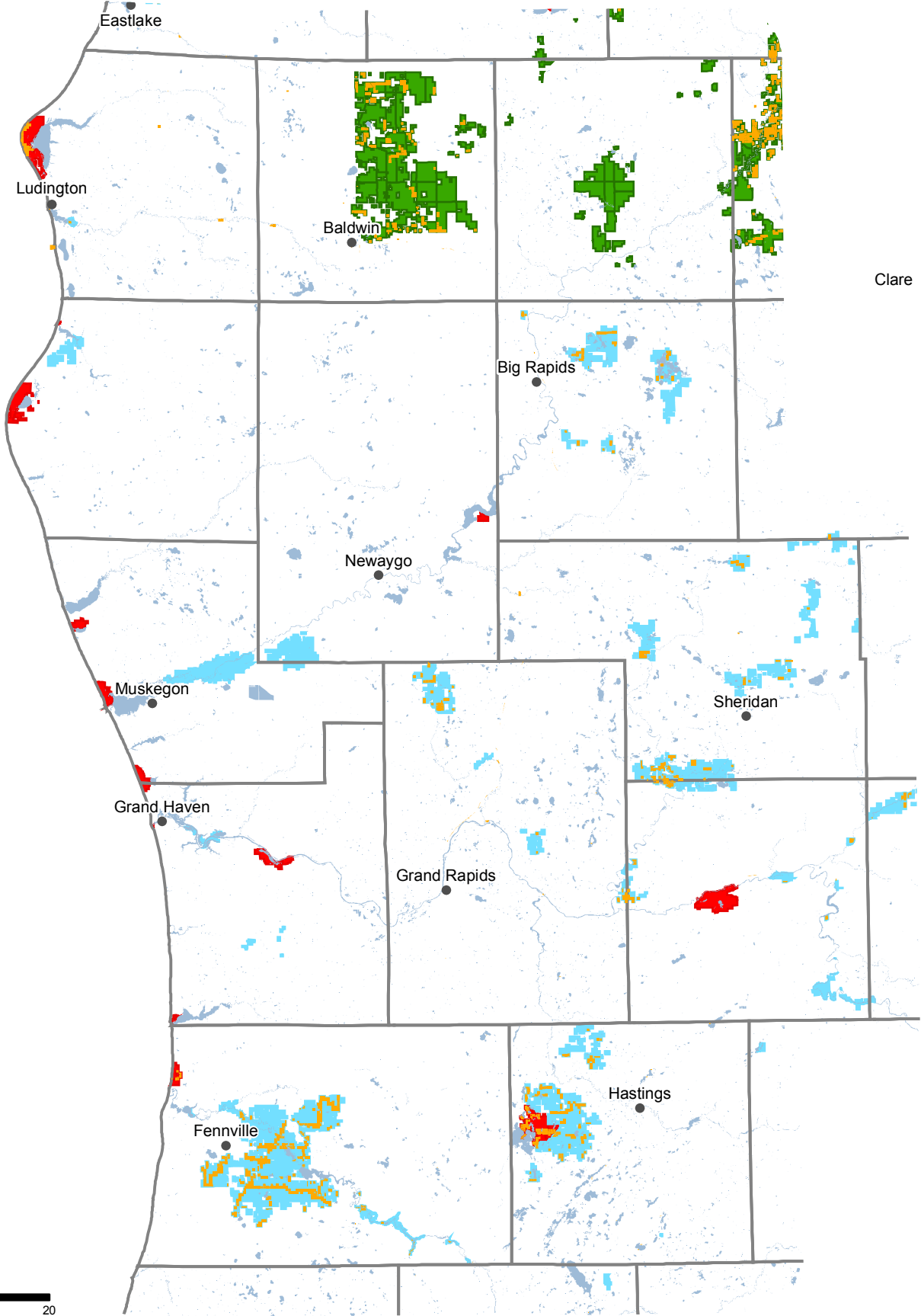


# DNR Easements

# West Central Region



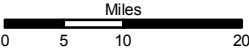
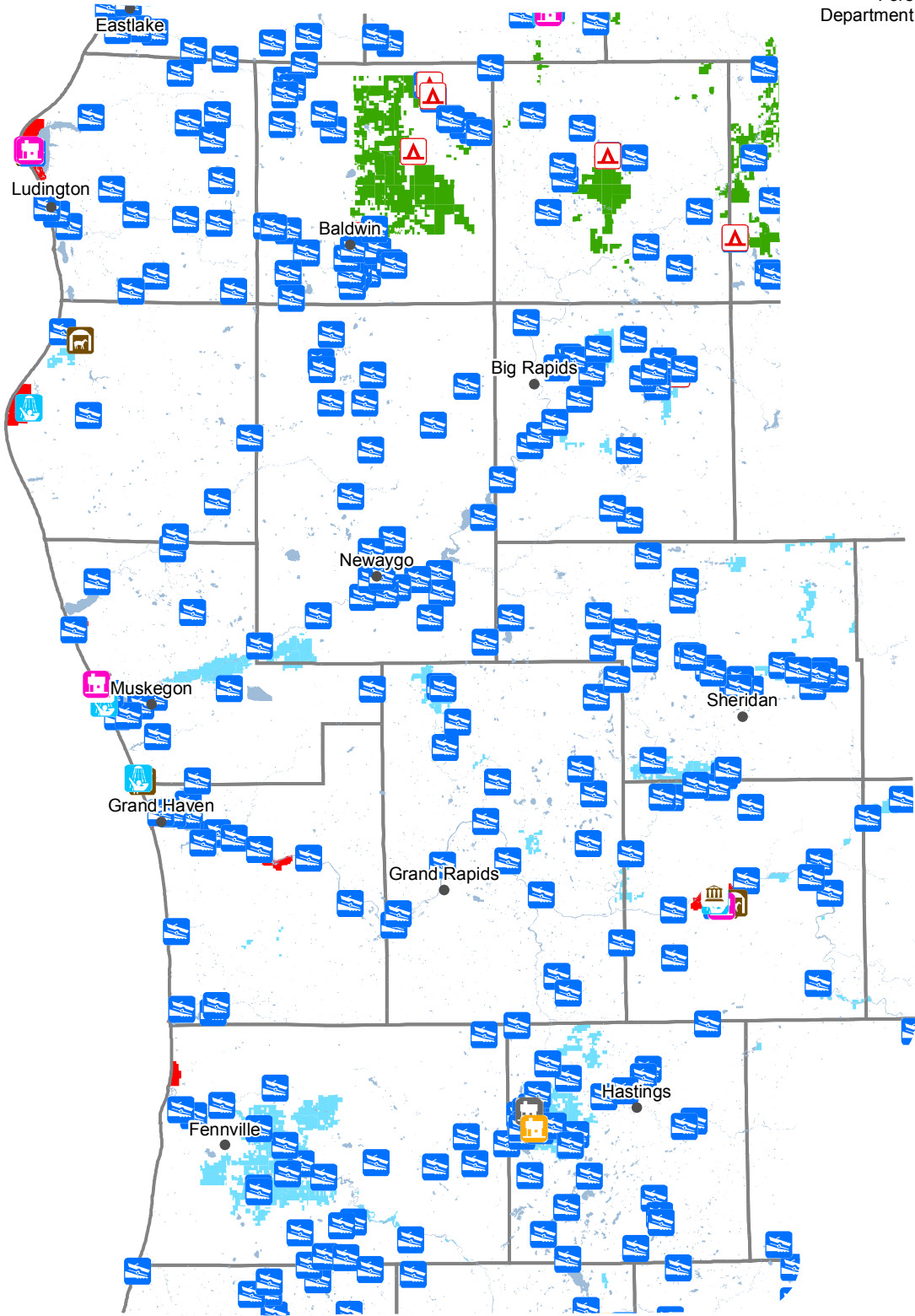
### Legend

- Cities
- Counties
- Lakes and Rivers
- State Lands
- State Forests
- State Parks
- WLD DIV Lands
- Granted Easements



# DNR Facilities West Central Region

Resource Assessment Unit  
Forest Resources Division  
Department of Natural Resources

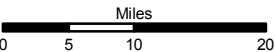
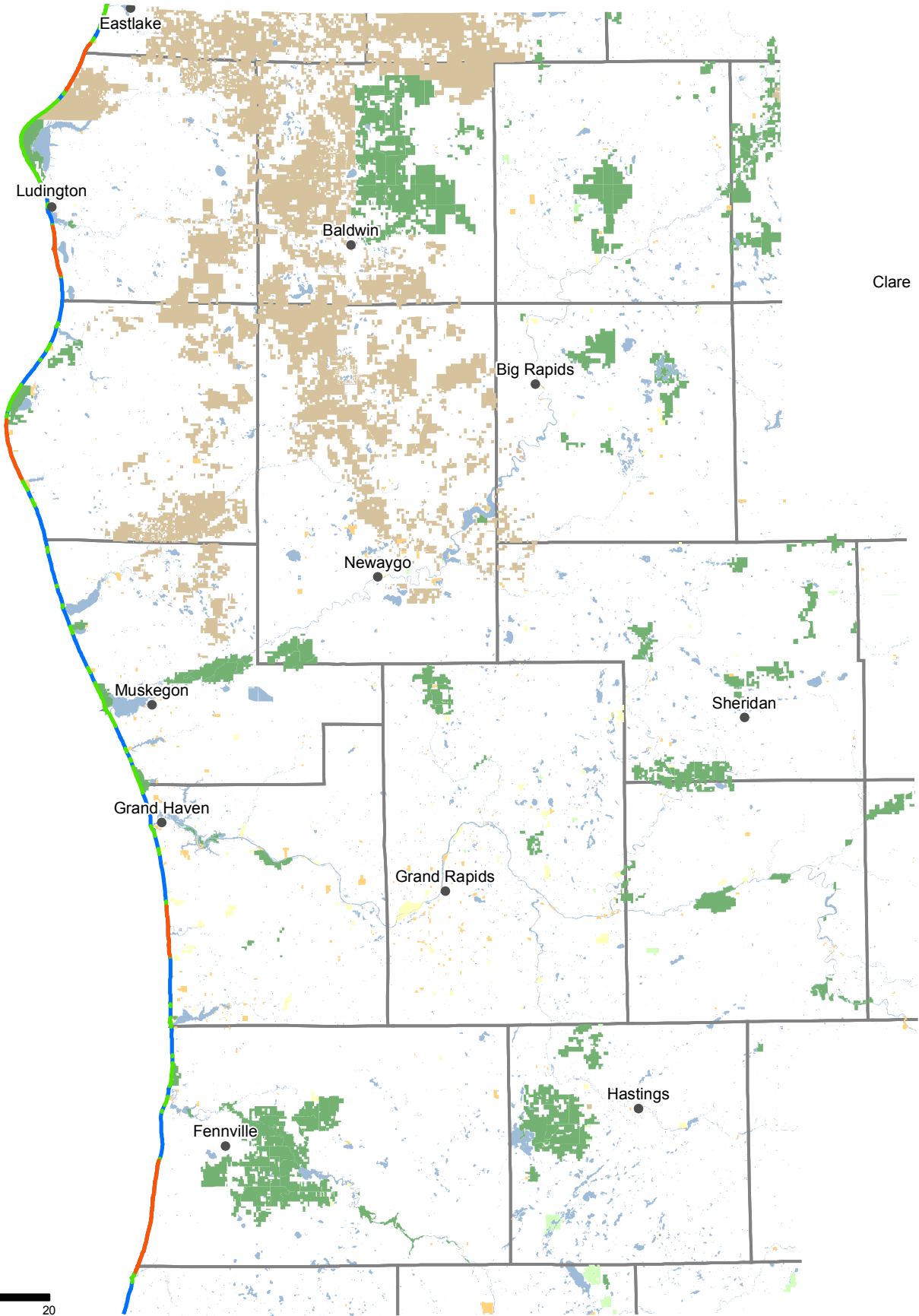


## Legend

- |                  |                        |                    |                              |
|------------------|------------------------|--------------------|------------------------------|
| • Cities         | <b>DNR Facilities</b>  | Historic Structure | Rustic Cabin                 |
| Counties         | Barn/Riding Stable     | Lock               | Rustic Campground            |
| Lakes and Rivers | Beach House/Bath House | Lodge              | Shooting Range               |
| State Lands      | Boating Access Site    | Mini Cabin         | Visitor Center/Nature Center |
| State Forests    | Harbor                 | Museum             |                              |
| State Parks      | Hatchery               | Nursery            |                              |
| WLD DIV Lands    |                        |                    |                              |

DNR Great Lake Access

West Central Region



- Legend
- Cities

Counties

Lakes and Rivers

State Land

Federal Land

The Nature Conservancy Lands

County

Local

NGO

Other

Great Lakes Water Access

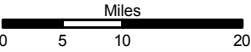
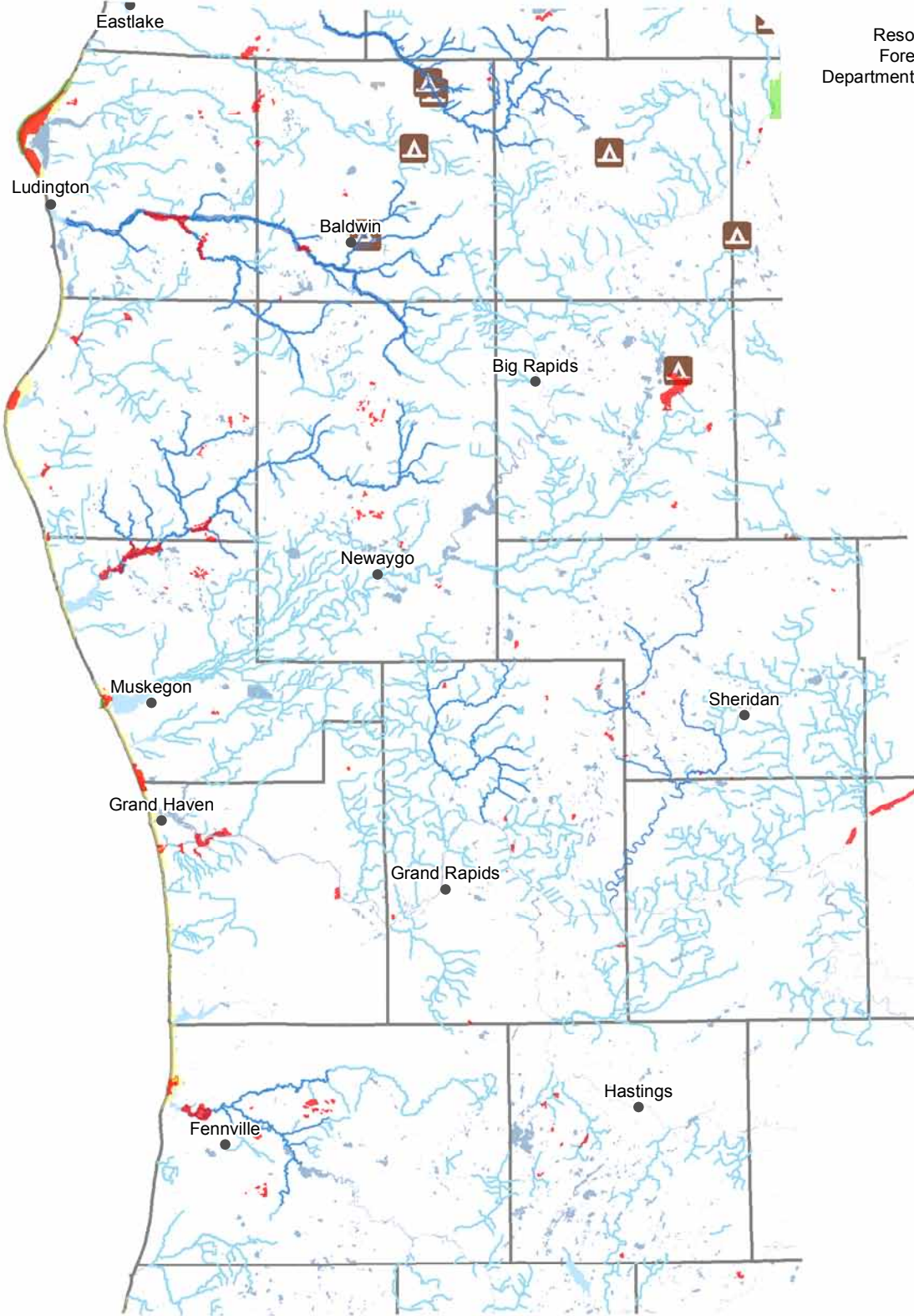
No Public Water Access

Public Water Access

Continuous Shoreline greater than 5 miles without public water access
- Resource Assessment Unit  
Forest Resources Division  
Department of Natural Resources



Resource Assessment Unit  
Forest Resources Division  
Department of Natural Resources

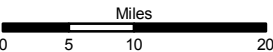
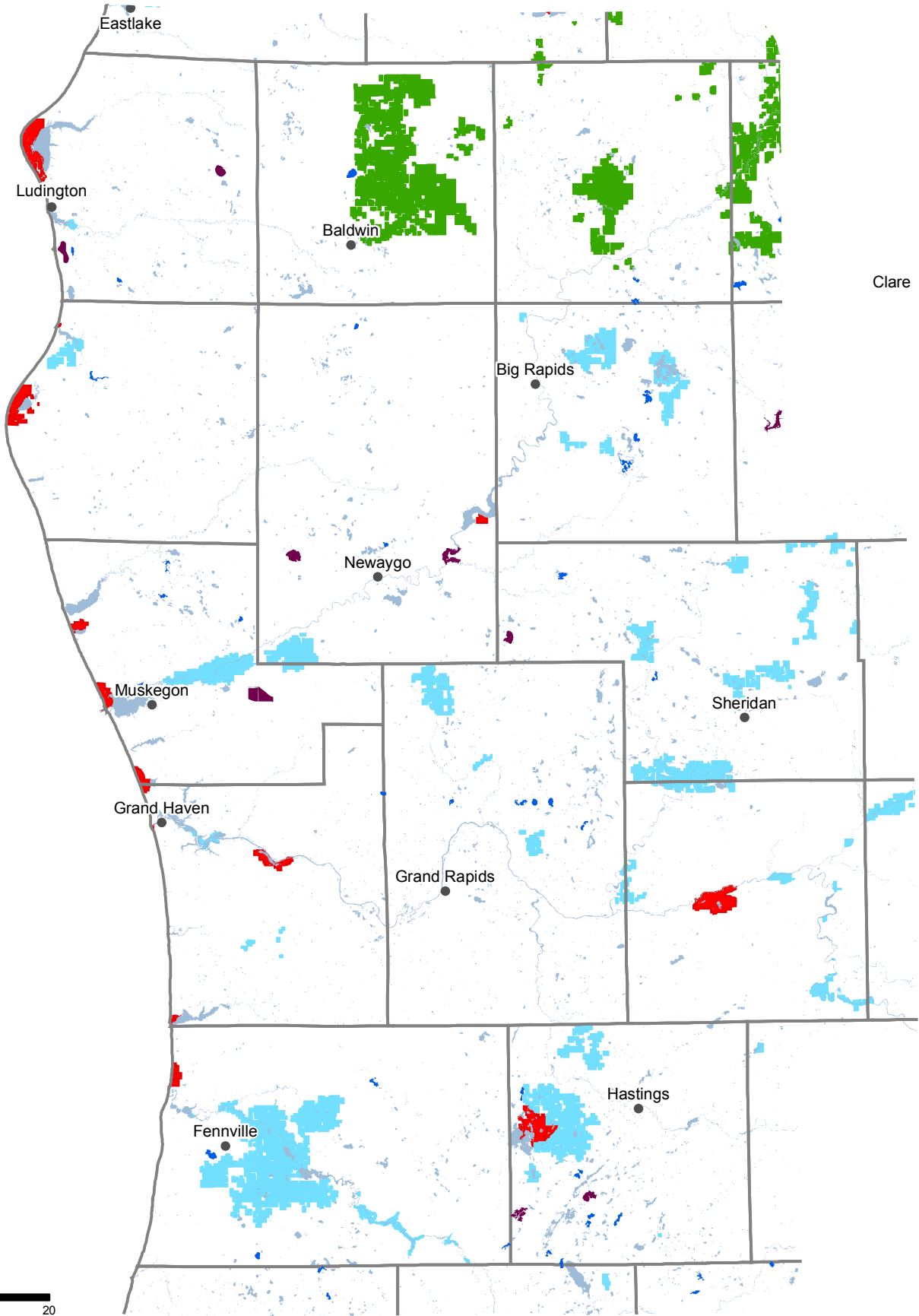


- Legend
- |                                    |  |   |
|------------------------------------|--|---|
| ● Cities                           | ■ Dedicated Management Areas               | — Wild & Scenic Rivers (USFS Lands)         |
| □ Counties                         | ■ Kirtland Warbler Habitat                 | ■ IFMAP Special Conservation Areas          |
| ■ Lakes and Rivers                 | ■ Critical Coastal Habitat (Piping Plover) | ■ Great Lakes Islands                       |
| ■ Ecological Reference Areas       | ■ Fishing Access Sites                     | ■ Wildlife Research Areas                   |
| ■ Natural Rivers Zoning District   | ■ Campgrounds                              | ■ Research, Development, and Military Lands |
| ■ Natural Rivers Vegetative Buffer | ■ Mineral Resource Polygon                 | ■ Wildlife Management Areas                 |
| ■ Critical Dunes                   | ■ Mineral Resource Points                  | ■ Deer Wintering Areas                      |
| ■ Coastal Environmental Areas      | ■ Contiguous Resource Areas                | ■ Cold Water Lakes                          |
| ■ Natural Areas Legally Dedicated  | ■ Visual Management Areas                  | — Cold Water Streams                        |



# DNR Lake Access

# West Central Region



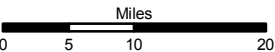
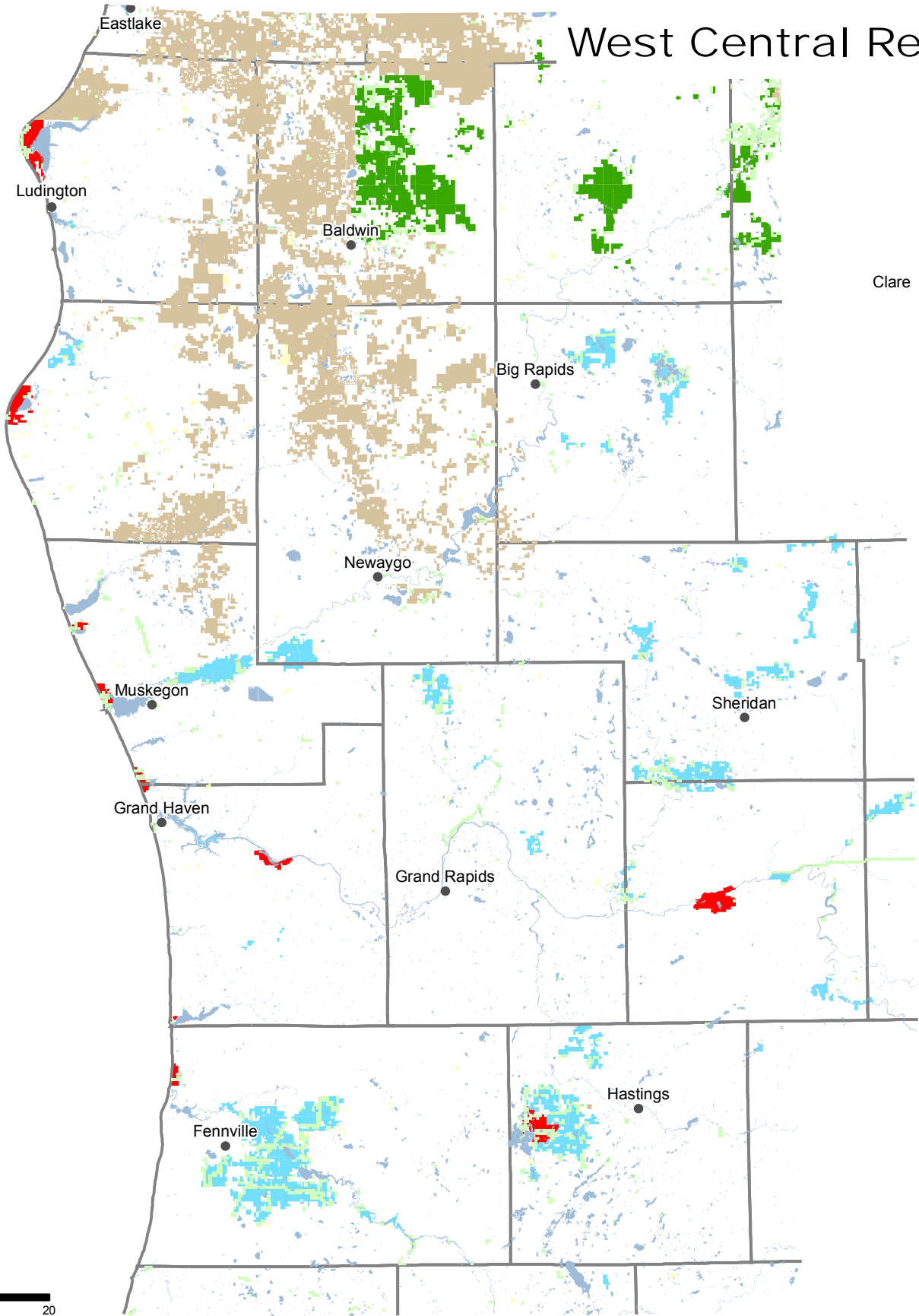
### Legend

- Cities
- Counties
- Lakes and Rivers
- State Lands
- State Forests
- State Parks
- WLD DIV Lands
- Lakes Between 100 and 500 Acres wo Access
- Lakes Greater than 500 Acres wo Access

# State, Commercial, and Federal Forests



## West Central Region



### Legend

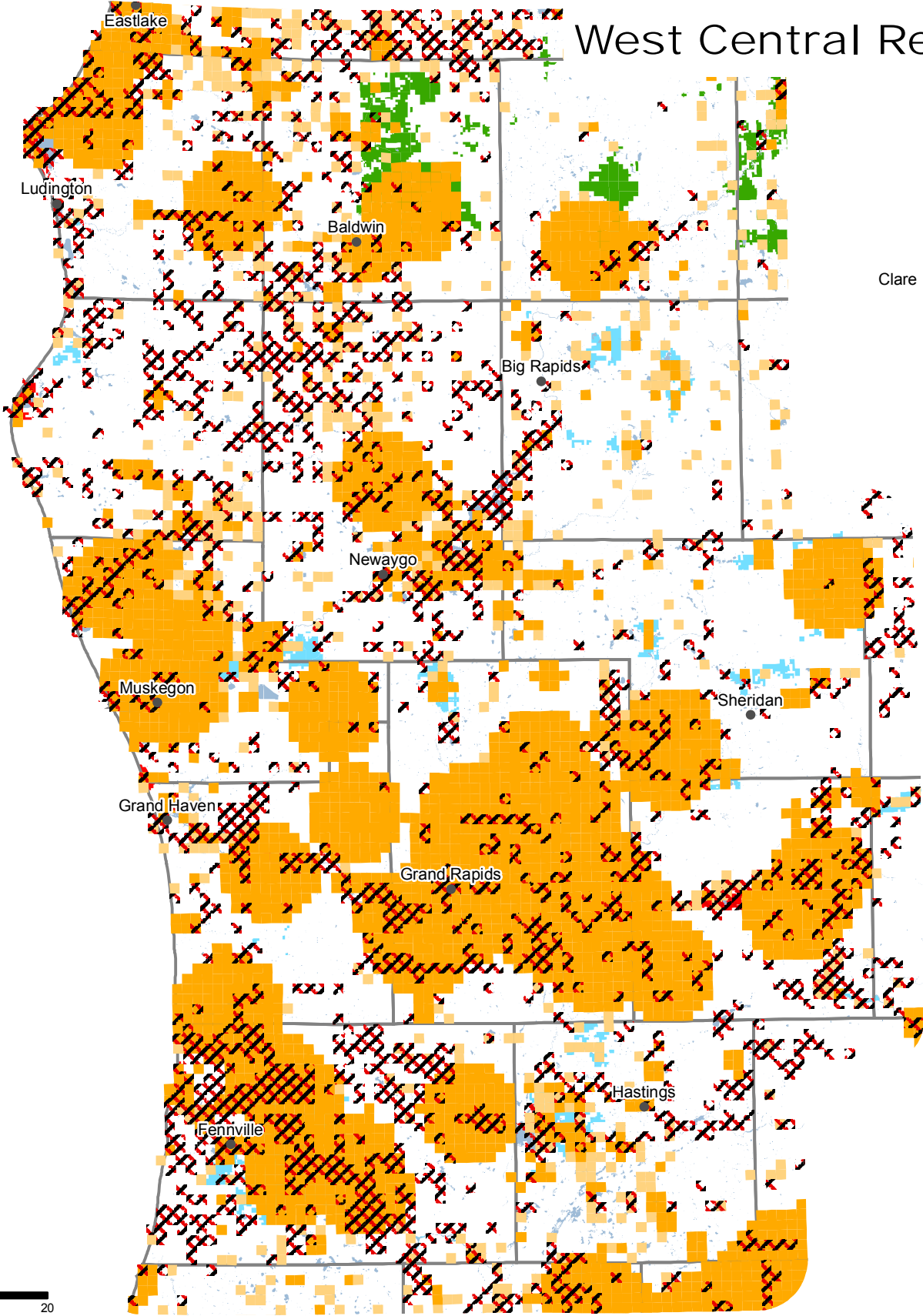
- Cities
- Counties
- Lakes and Rivers All
- WLD DIV Lands
- State Lands
- State Forests
- State Parks
- Conservation Easements
- Commercial Forests
- Federal Lands



# DNR Natural and Cultural Features



## West Central Region

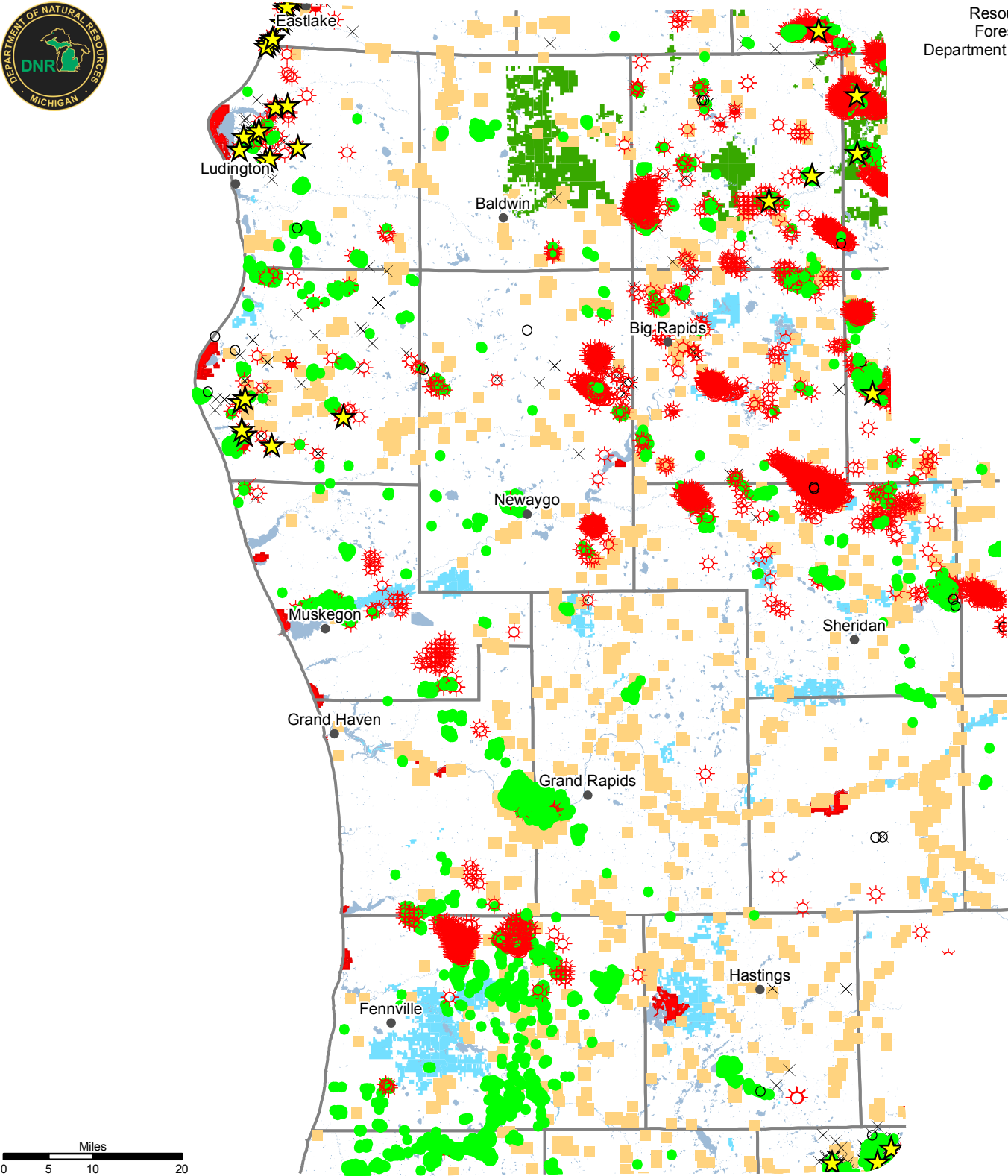


### Legend

- |                    |               |   |
|--------------------|---------------|---|
| • Cities           | State Lands   | Threatened_Endangered_or_Rare_Species_Sites |
| □ Counties         | State Forests | Rare_Natural_Community_Sites                |
| ■ Lakes and Rivers | State Parks   | Archaeology Sites                           |
| ■ WLD DIV Lands    |               |   |



Resource Assessment Unit  
Forest Resources Division  
Department of Natural Resources



Legend

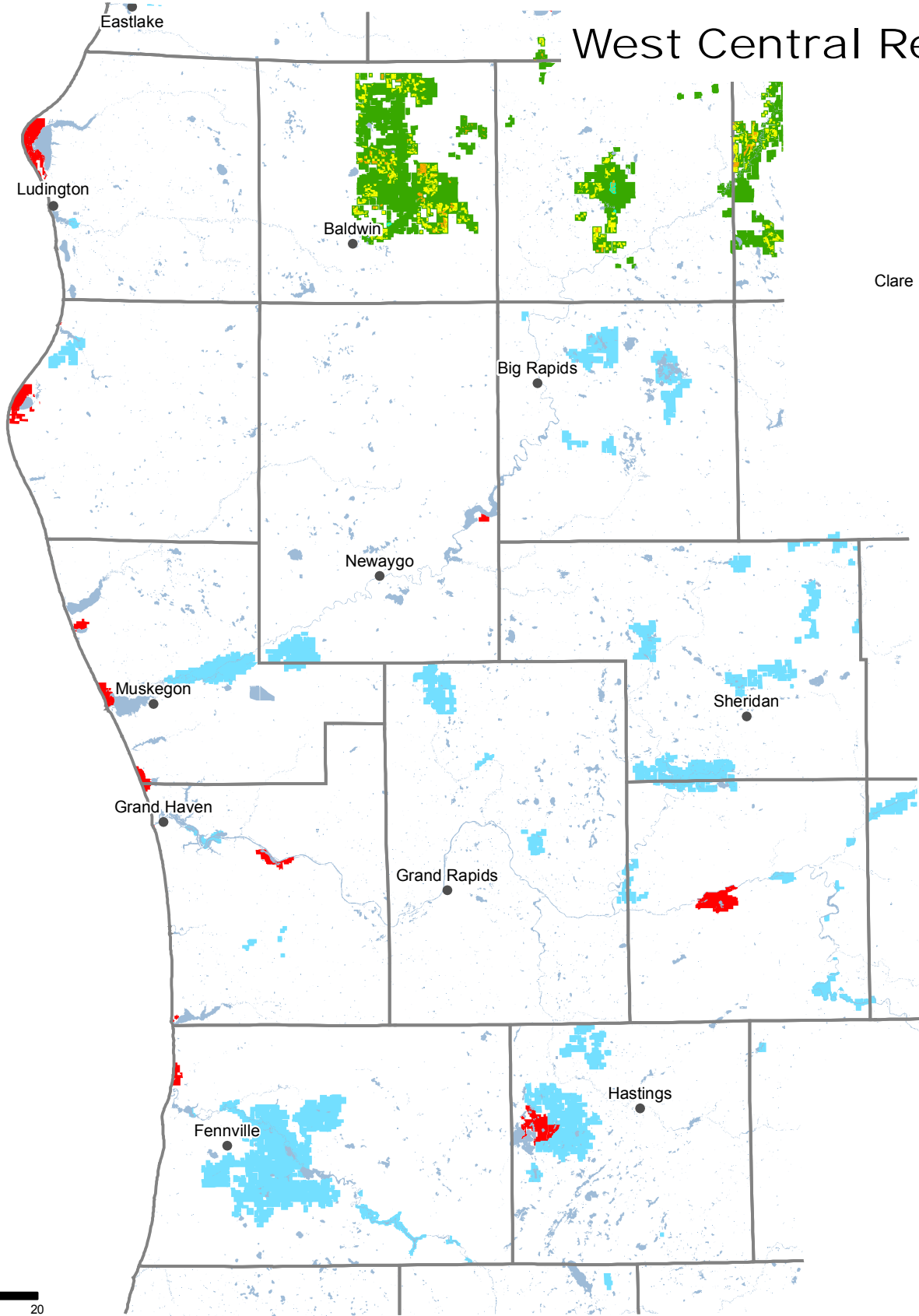
- |                    |                                     |   |
|--------------------|-------------------------------------|---|
| ● Cities           | ● Oil                               | ★ Oil & Gas Well Hydrogen Sulfide Wells |
| □ Counties         | ⊗ Natural Gas                       | × Oil & Gas Well Surface Locations      |
| ■ Lakes and Rivers | ⊗ Gas Condensate                    | ■ Sand & Gravel Pits                    |
| ■ State Lands      | ⊗ Gas Injection                     |   |
| ■ State Forests    | ⊗ Gas Storage                       |   |
| ■ State Parks      | ⊗ Gas Production and Brine Disposal |   |
| ■ WLD DIV Lands    | ○ Permitted Well Location           |   |



# DNR Timber Management 2008-2012



## West Central Region



Legend

- Cities
- Counties
- Lakes and Rivers

State Lands

- State Forests
- State Parks
- WLD DIV Lands

Timber Sales

- Closed Timber Sale
- Open Timber Sale

Timber Management History

- Successful Completion

Resource Assessment Unit  
Forest Resources Division  
Department of Natural Resources