



# MARQUETTE COUNTY SHOOTING RANGE PUBLIC MEETING

January 29, 2017

# Presentation Overview

- ▣ Statewide Range Development Initiative
- ▣ Funding for Initiative
- ▣ Process Steps to Range Construction
- ▣ Marquette County Site Selection



# Statewide Initiative

- ▣ Michigan is a top state for number of shooters
- ▣ 817,870 participants
- ▣ Ranks 6th in the Nation
- ▣ Ranks 4th in total days



# Statewide Initiative

- ▣ Gun owner numbers are increasing
  - 400 stored by students at NMU
  - ~5000 CPL holders in Marquette County
- ▣ 13 Designated Ranges – none in the U.P.
- ▣ 70+ locations on state land
- ▣ Priority Areas
  - Marquette



# Statewide Initiative

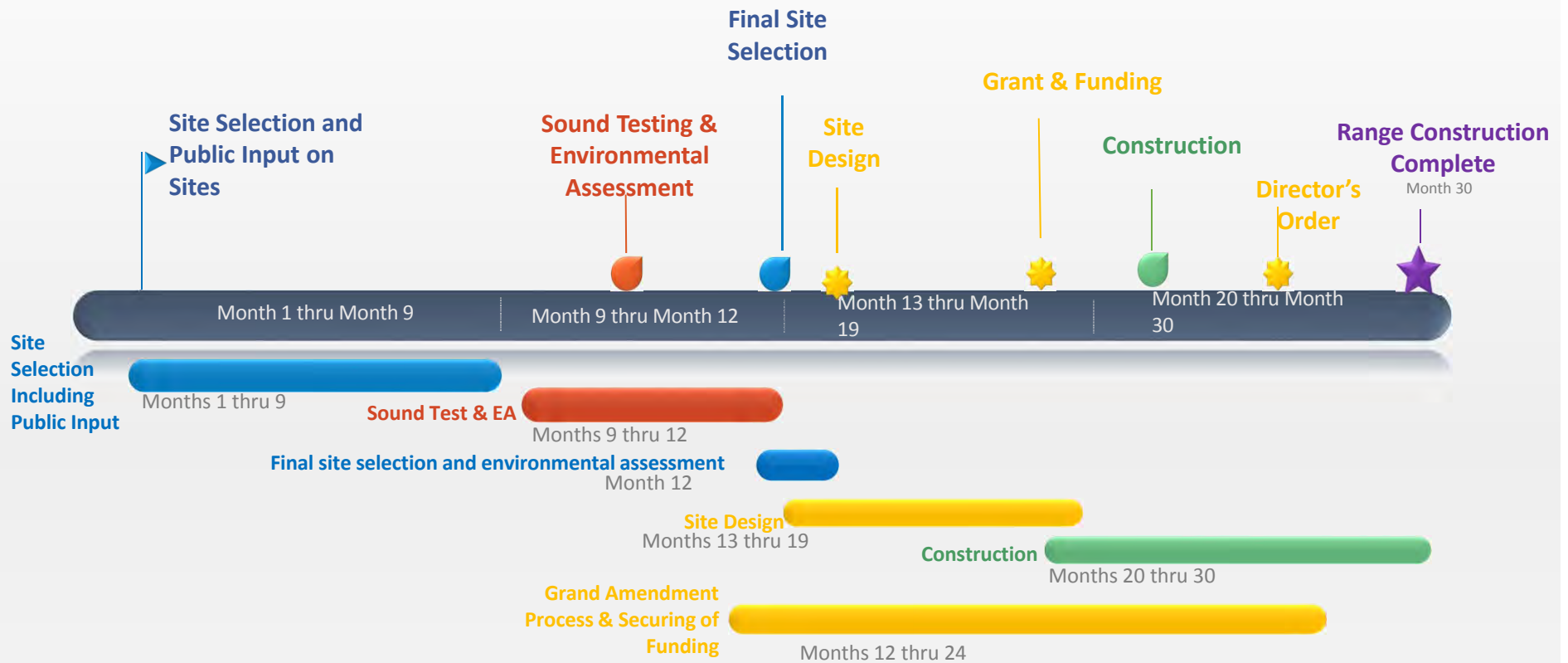
- ▣ Strategic initiative to improve and expand public range inventory
- ▣ Embrace the growth of shooting sports
- ▣ Evaluate gaps
- ▣ Address issues for safety & conflicts
- ▣ Embrace and grow partnerships



# Initiative Funding

- ▣ \$3 Million Grant (Pittman-Robertson)
- ▣ \$1 Million Match Needed
- ▣ \$250,000 General Fund
- ▣ \$750,000 Remaining Match

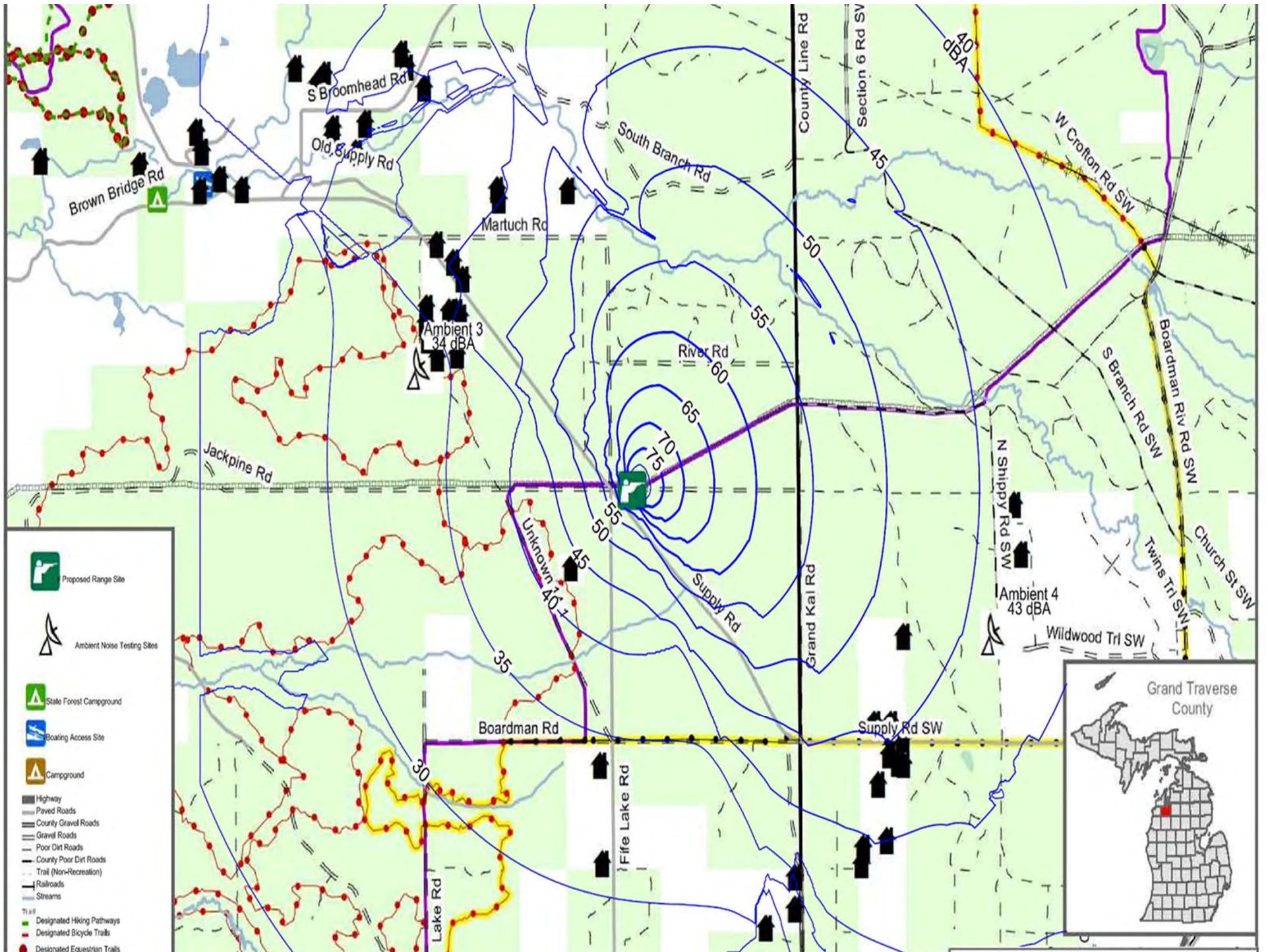






# Initiative Process Steps

- ▣ Address safety and conflict
- ▣ Department Team input
- ▣ Site selection
- ▣ Sound testing and environmental assessments
- ▣ Local & regional partnerships
- ▣ Public input
- ▣ “Micro Range” design template
- ▣ Construction
- ▣ Maintenance & enforcement



Proposed Range Site

Ambient Noise Testing Sites

State Forest Campground

Boating Access Site

Campground

Highway

Paved Roads

County Gravel Roads

Gravel Roads

Poor Dirt Roads

County Poor Dirt Roads

Trail (Non-Recreation)

Railroads

Streams

**TRAIL**

Designated Hiking Pathways

Designated Bicycle Trails

Designated Equestrian Trails



# Initiative Process Steps

## Micro - Range

- ▣ NRA Range Source Book
- ▣ Core Elements
  - Single entrance drive
  - Accessible parking & pedestrian routes
  - Standard 25, 50 & 100 yard shooting stations
    - ▣ Options may include archery, 200 yard, shotgun
  - Site grading, berm work & drainage
  - Educational & interpretive signage
  - Amenities: vault toilet, benches, trash receptacles



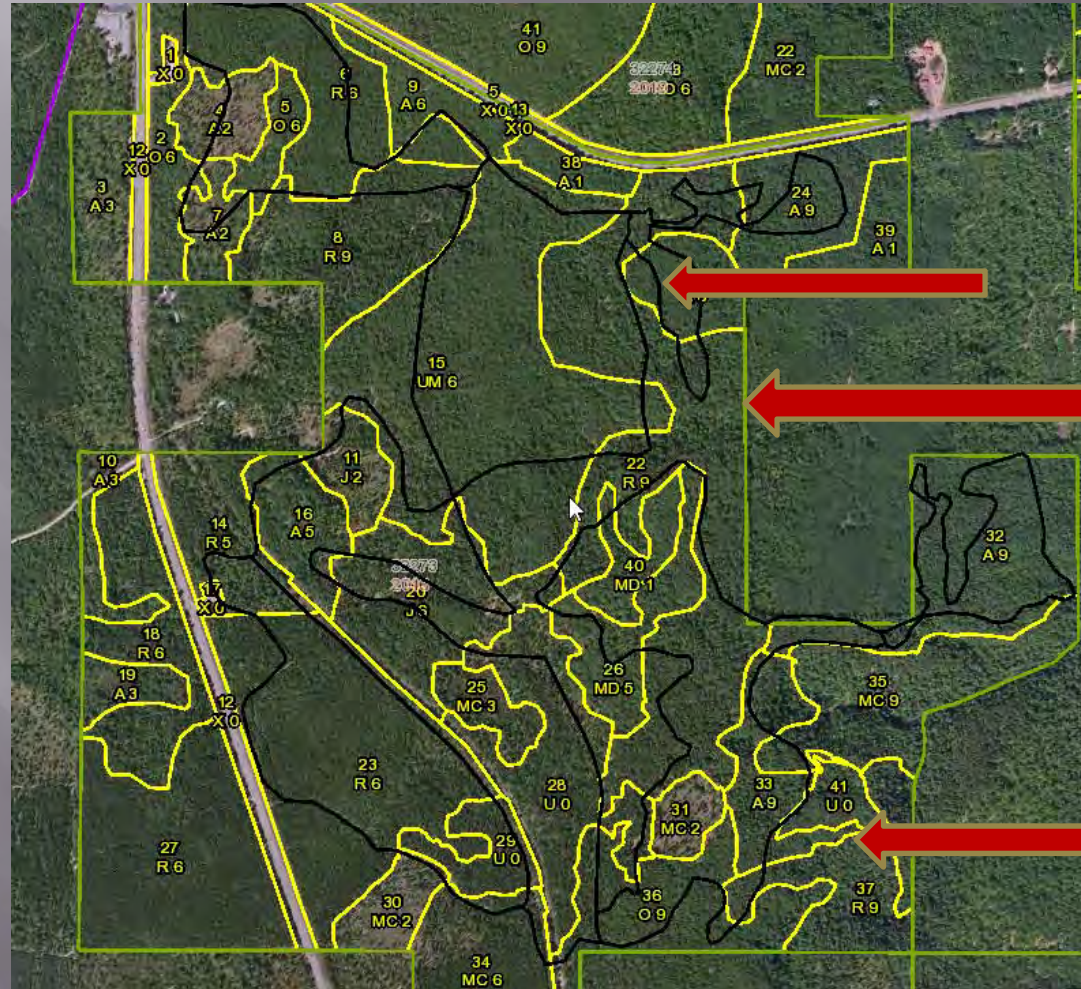
# Shooting Range Site Considerations

- ▣ Ownership
- ▣ Safety
- ▣ Location
- ▣ Construction Costs
- ▣ Access
- ▣ Zoning
- ▣ Partnerships

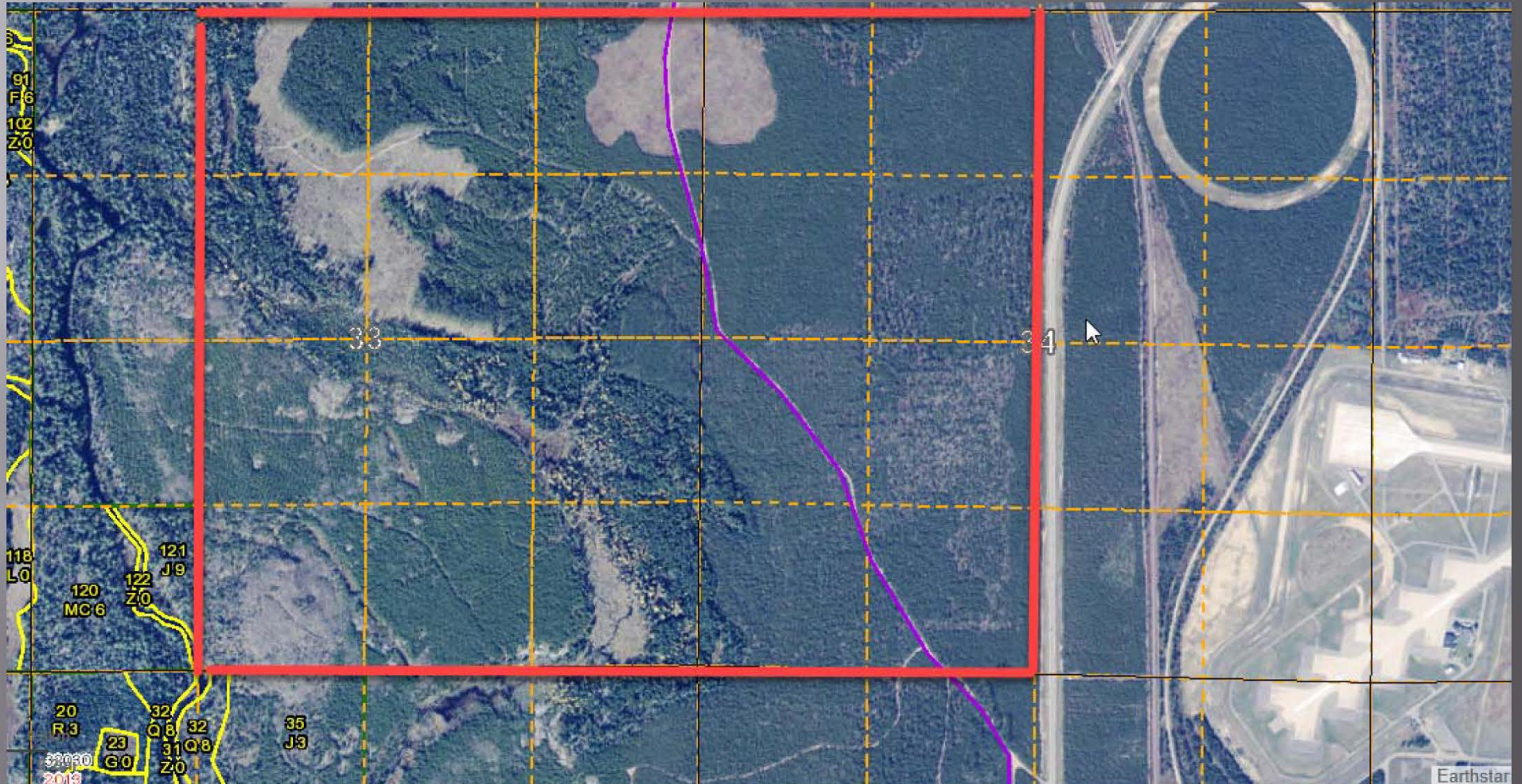
# Sites Considered

- Cliff's Property
- Sands West
- Camp 4 Pit
- Olson Road
- Wetmore Landing/Little Presque Isle Tract
- Blueberry Ridge Pathway
- Thunder Valley Equestrian Trail
- Two Marquette County owned possibilities were also considered

# Description



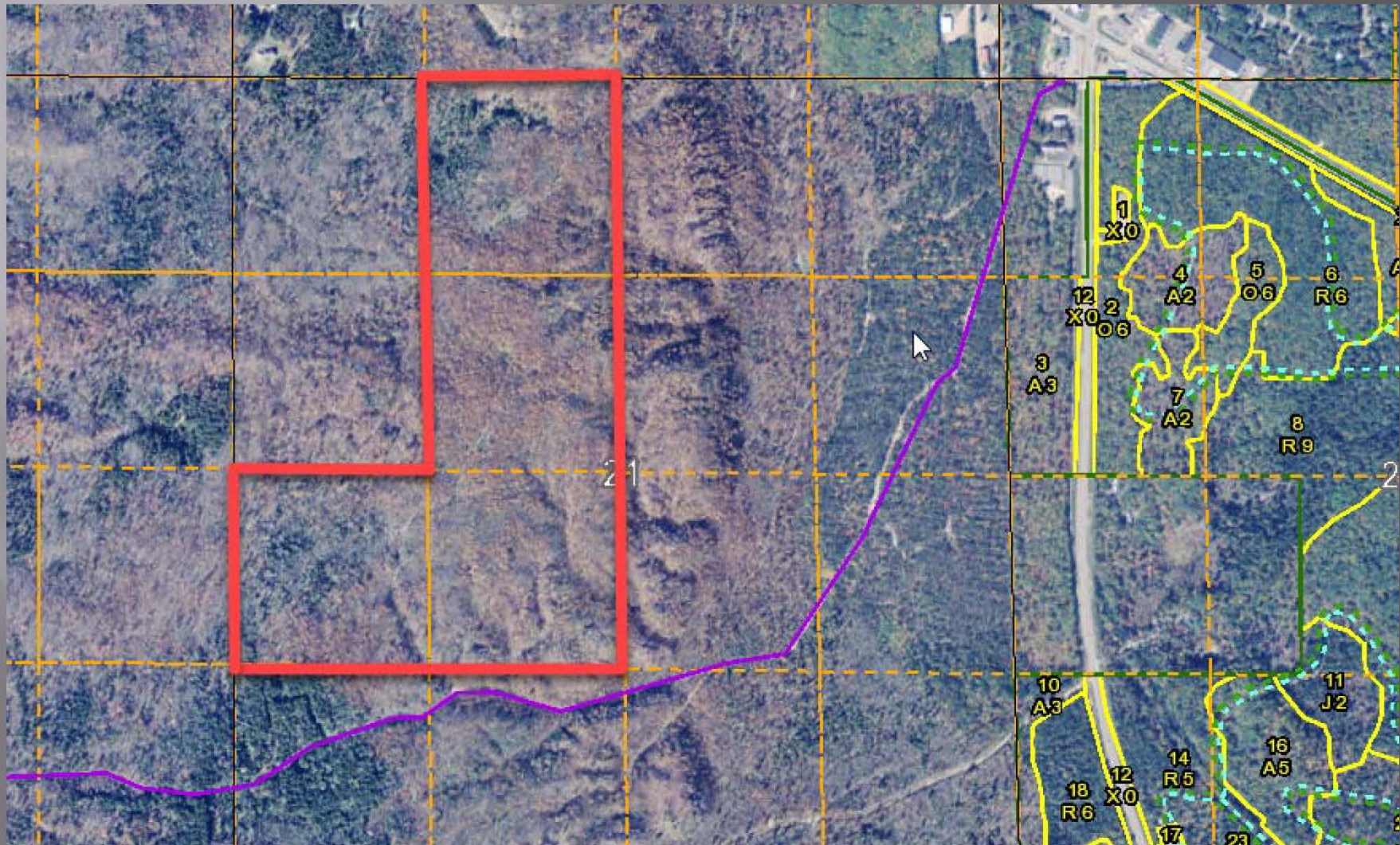
# Other Locations Marquette County



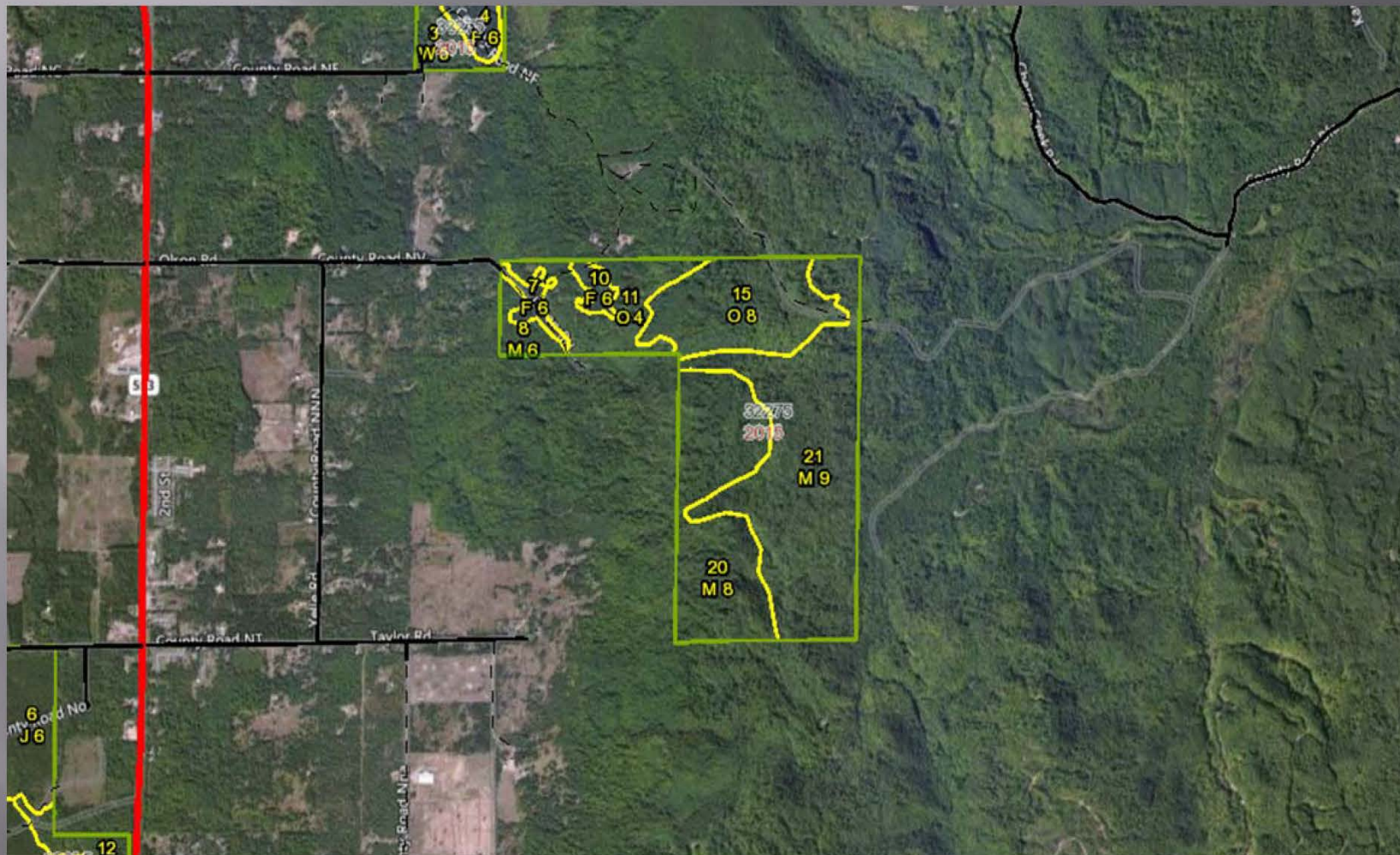


# Other Locations

## Marquette County Solid Waste Authority

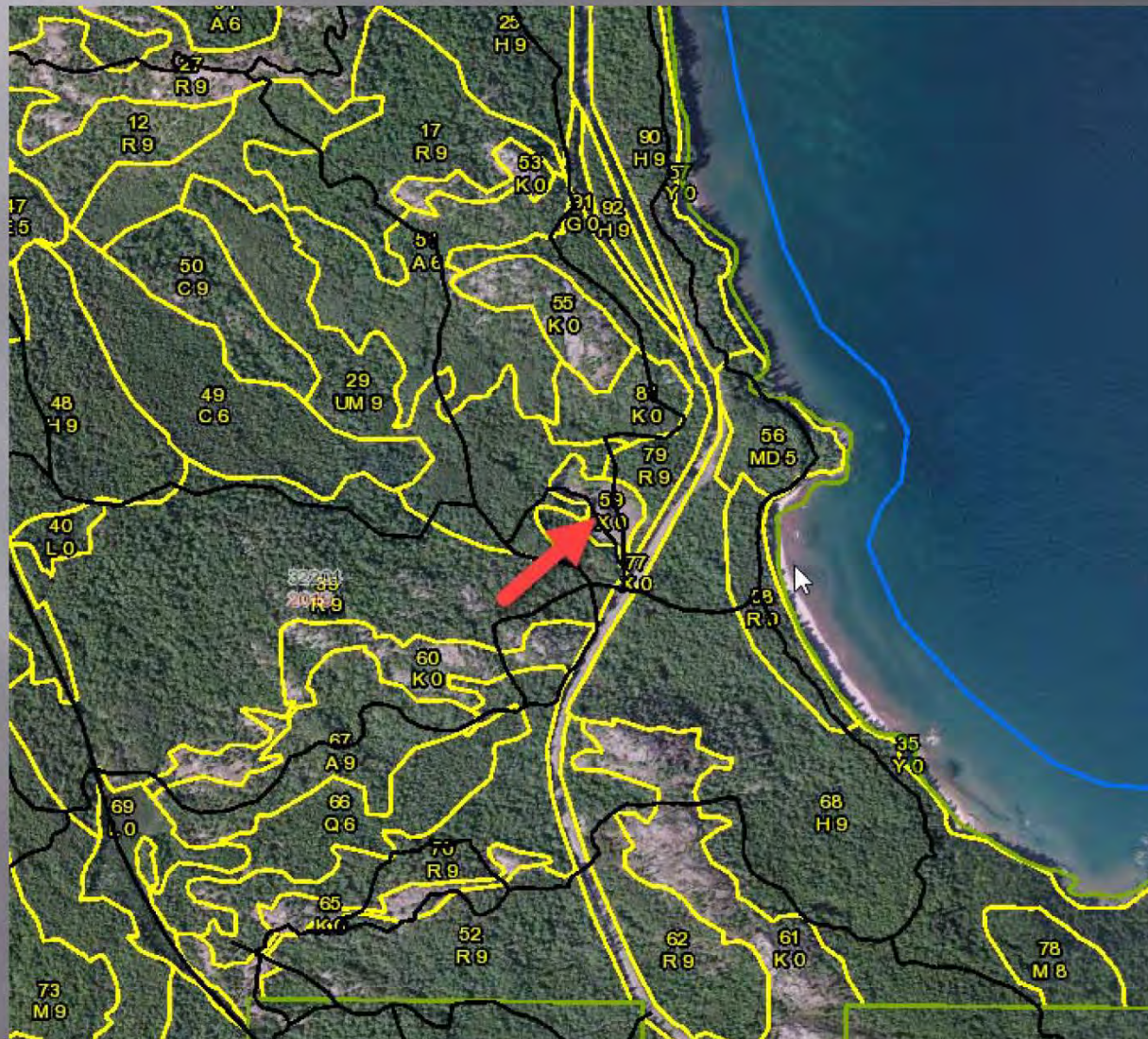


# Other State Land Olson Road

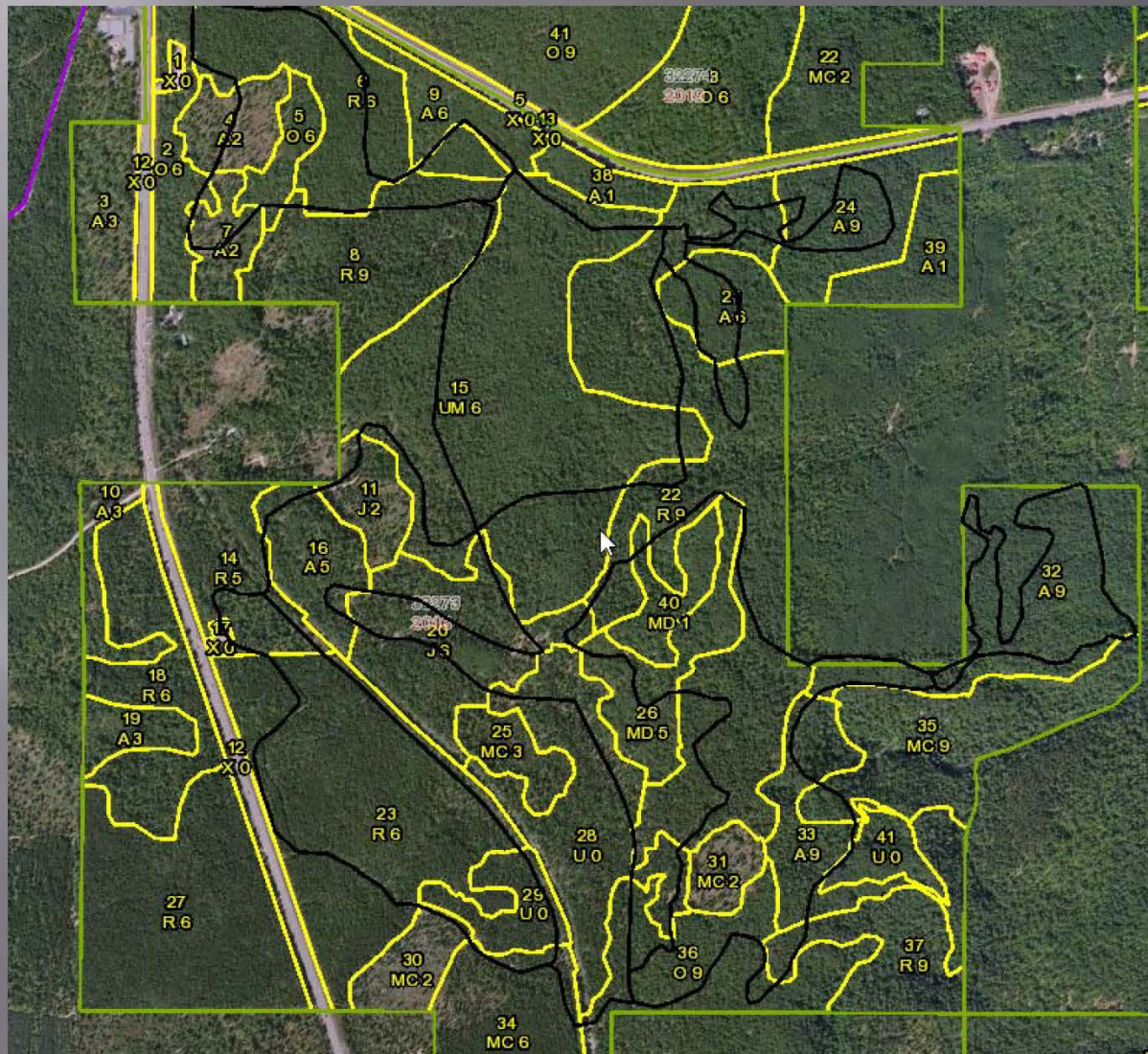


# Other State Land

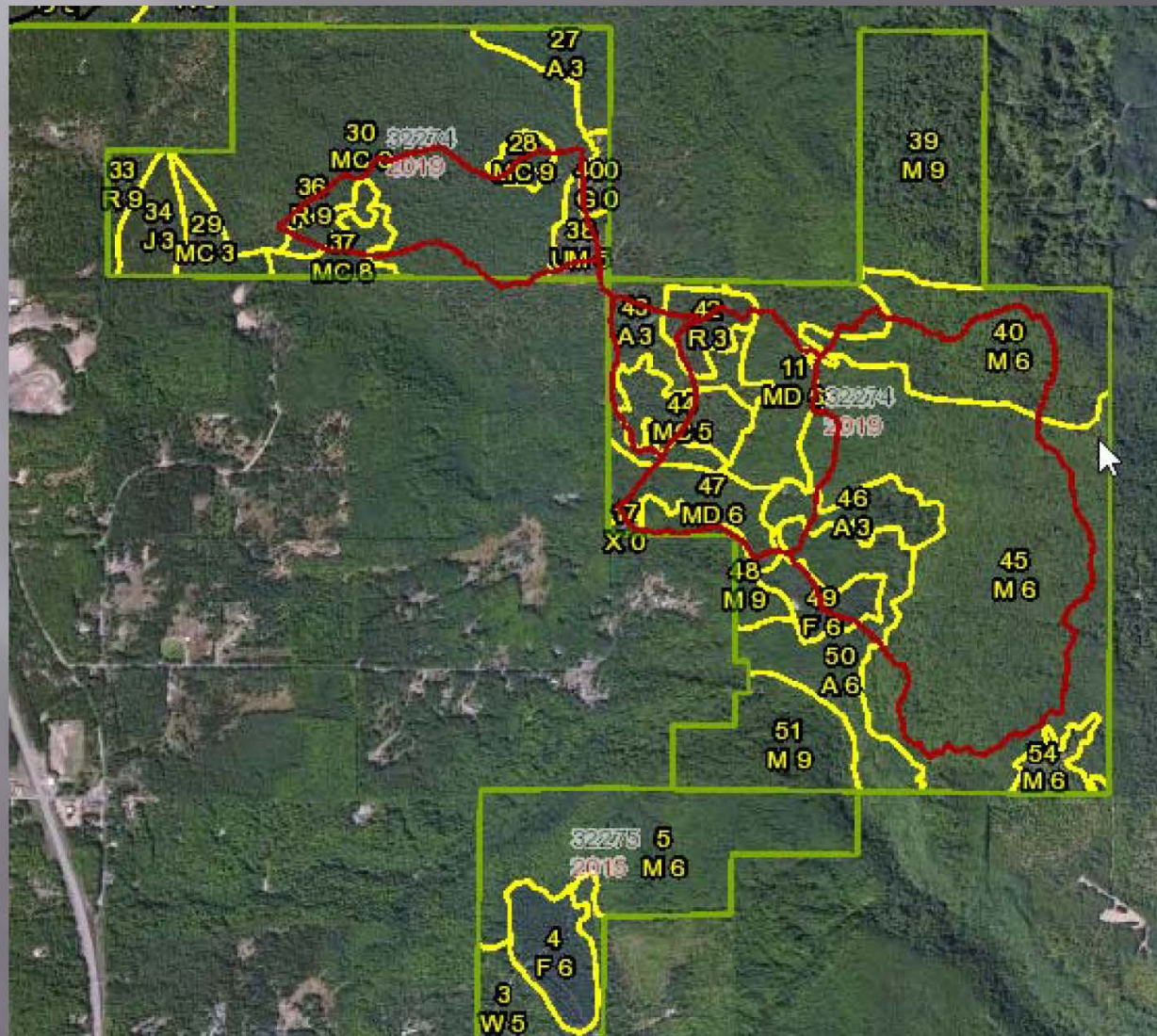
## Wetmore Landing/Little Presque Isle



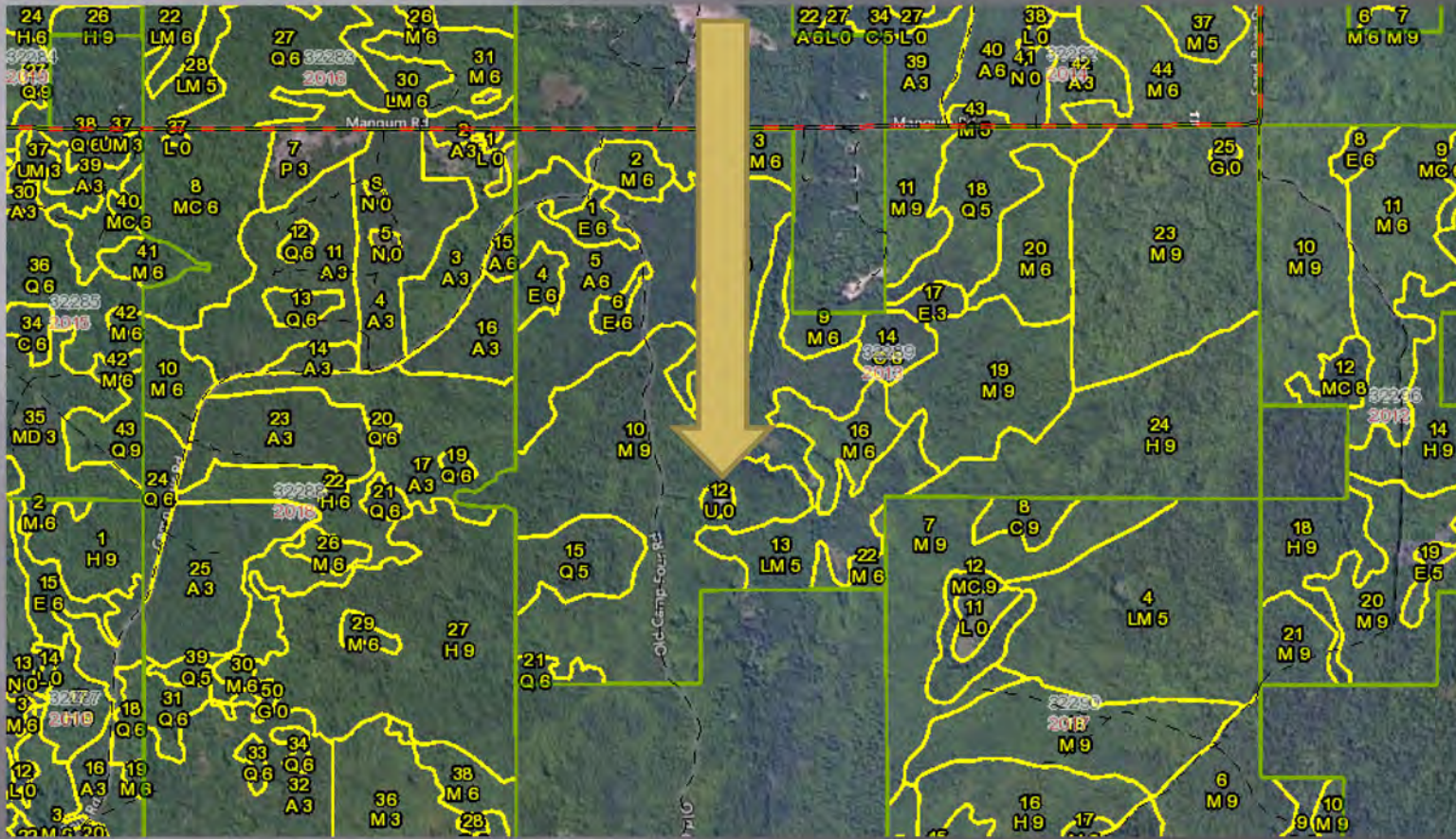
# Other State Land Blueberry Ridge Pathway



# Other State Land Thunder Valley Equestrian Trail



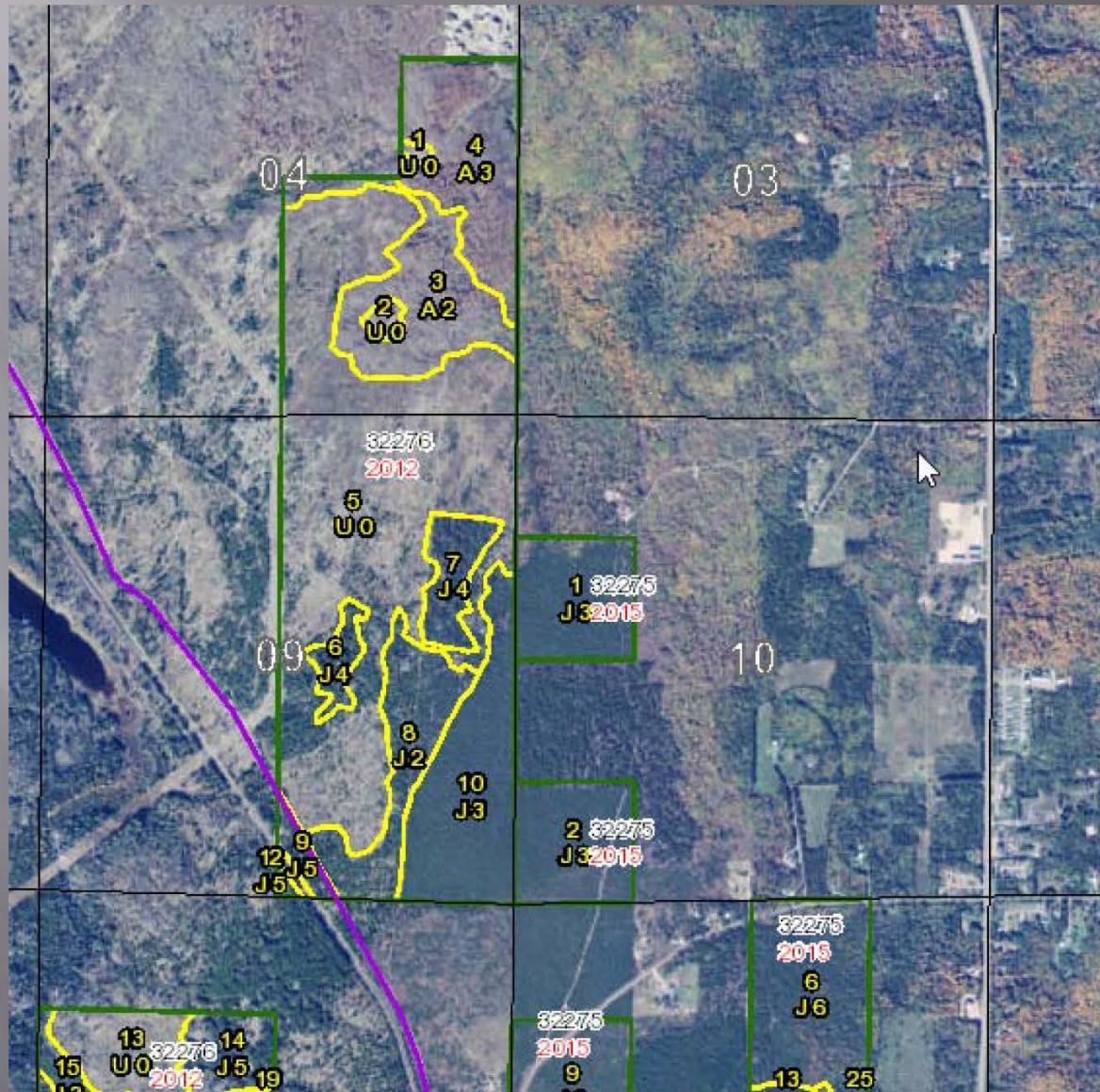
# Camp 4 Pit



# Sands West



# Sands West





# Cliffs Property- Co. Road 480



# Cliffs Property- Co. Road 480



# Contact Information

- ▣ [www.Michigan.gov/shootingranges](http://www.Michigan.gov/shootingranges)
  
- ▣ Lori Burford – Shooting Range Analyst
  - [burfordl@Michigan.gov](mailto:burfordl@Michigan.gov)
  - 989-600-9114
  
- ▣ Thomas Seablom – Gwinn Unit Manager
  - [seablomt@Michigan.gov](mailto:seablomt@Michigan.gov)
  - 906-346-9201